



Jail Population Trend Report

Apr - Jun 2011

Prepared by Mecklenburg County Manager's Office

The purpose of the report is to identify and track emerging trends that may influence the operation of the detention facilities. The data below captures events that occurred during the fourth quarter of FY 2011 and compares the observations to those of the previous quarter and year.

I. Average Jail Population by Facility

	Apr - Jun 2011 ADP	Jan - Mar 2011 ADP	Apr - Jun 2010 ADP	Change From	
				Previous Qtr	Apr - Jun 2010
Jail Central	1,423	1,381	1,498	3%	-5%
Jail North	509	465	504	9%	1%
North Annex	76	197	141	-6%	-46%
Work Release	70	58	82	21%	-15%
All Facilities	2,053	2,101	2,226	-2%	-8%

ADP As A Percentage Of Design / Functional Capacity¹

	Apr - Jun 2011 D/F %	Jan - Mar 2011 D/F %	Apr - Jun 2010 D/F %	Facility Capacity	
				Design	Functional
Jail Central	75 / 88	73 / 85	79 / 93	1,904	1,618
Jail North	83 / 98	76 / 89	82 / 97	614	522
North Annex	24 / 28	62 / 72	44 / 52	320	272
Work Release	73 / -	60 / -	85 / -	96	96
All Facilities	72 / 82	74 / 84	78 / 89	2,847	2,508

- ADP declined 8 percent from the same period of the previous year.
- ADP did not exceed functional capacity at any facility during the quarter. Jail North approached this level; however, capacity existed at Central were additional space required.
- Declining bed demand resulted in the closing of North Annex in June 2011.

¹ Design capacity is the total beds available in the facilities. Functional capacity represents 85 percent of design capacity. Functional capacity is considered the maximum number that can be housed while still permitting the proper segregation and movement of inmates according to gender, security risk, and related factors. Work Release does not consider functional capacity in its operations.

II. Characteristics of the Jail Population

	Apr - Jun 2011	Jan - Mar 2011	Apr - Jun 2010
Gender			
Adult Male	1,808 (88%)	1,874 (89%)	1,967 (88%)
Female	179 (9%)	174 (8%)	175 (8%)
Youthful Offender (Male)	67 (3%)	58 (3%)	83 (4%)
Race / Ethnicity			
African-American	1,425 (70%)	1,402 (67%)	1,512 (68%)
Caucasian	299 (15%)	308 (15%)	292 (13%)
Hispanic/Latino	304 (15%)	366 (18%)	392 (18%)
Others	11 (<1%)	11 (1%)	16 (1%)
Custody Type			
Pretrial	1,399 (68%)	1,417 (67%)	1,505 (65%)
Sentenced	256 (12%)	225 (11%)	259 (11%)
Federal- U.S Marshals	390 (19%)	421 (20%)	411 (18%)
Federal- Immigration	1 (<1%)	23 (1%)	81 (3%)
Federal- 287(g)	6 (<1%)	17 (1%)	52 (2%)
Federal- BOP	2 (<1%)	2 (<1%)	7 (<1%)

- The distribution of gender and race within the population was unchanged relative to the previous quarter and same period last year. Males (88 percent) and African-Americans (70 percent) remain the dominant population groups.
- The distribution of inmates by custody type remained stable during the period. Just over two-thirds of the jail's population (68 percent) was comprised of pretrial inmates, up slightly from the previous year.
- Federal inmates represented 19 percent of the jail's population; consistent with the previous quarter and the same period of 2010. However, significant decreases were observed in the *number* of Immigration and 287(g) inmates held.

III. Booking and Release Composition²

	Apr - Jun 2011		Apr - Jun 2010	
	Avg. Monthly Composition	Avg. Length of Stay (days)	Avg. Monthly Composition	Avg. Length of Stay (days)
Intakes				
State	2,930	17	3,045	18
Federal- USM	47	194	49	212
Federal- Immigration	9	2	155	5
Federal- 287(g)	15	2	15	4
Released				
State	3,054		3,066	
Federal- USM	75		50	
Federal- Immigration	13		168	
Federal- 287(g)	104		124	

- The average monthly intake volume for State inmates declined 4 percent from the previous year.
- Immigration intakes declined 94 percent from the previous year.
- 287(g) intakes were unchanged from the previous year.
- Average length of stay (ALOS) for F-USM inmates decreased 8 percent to 256 days; State inmate ALOS decreased by one day.

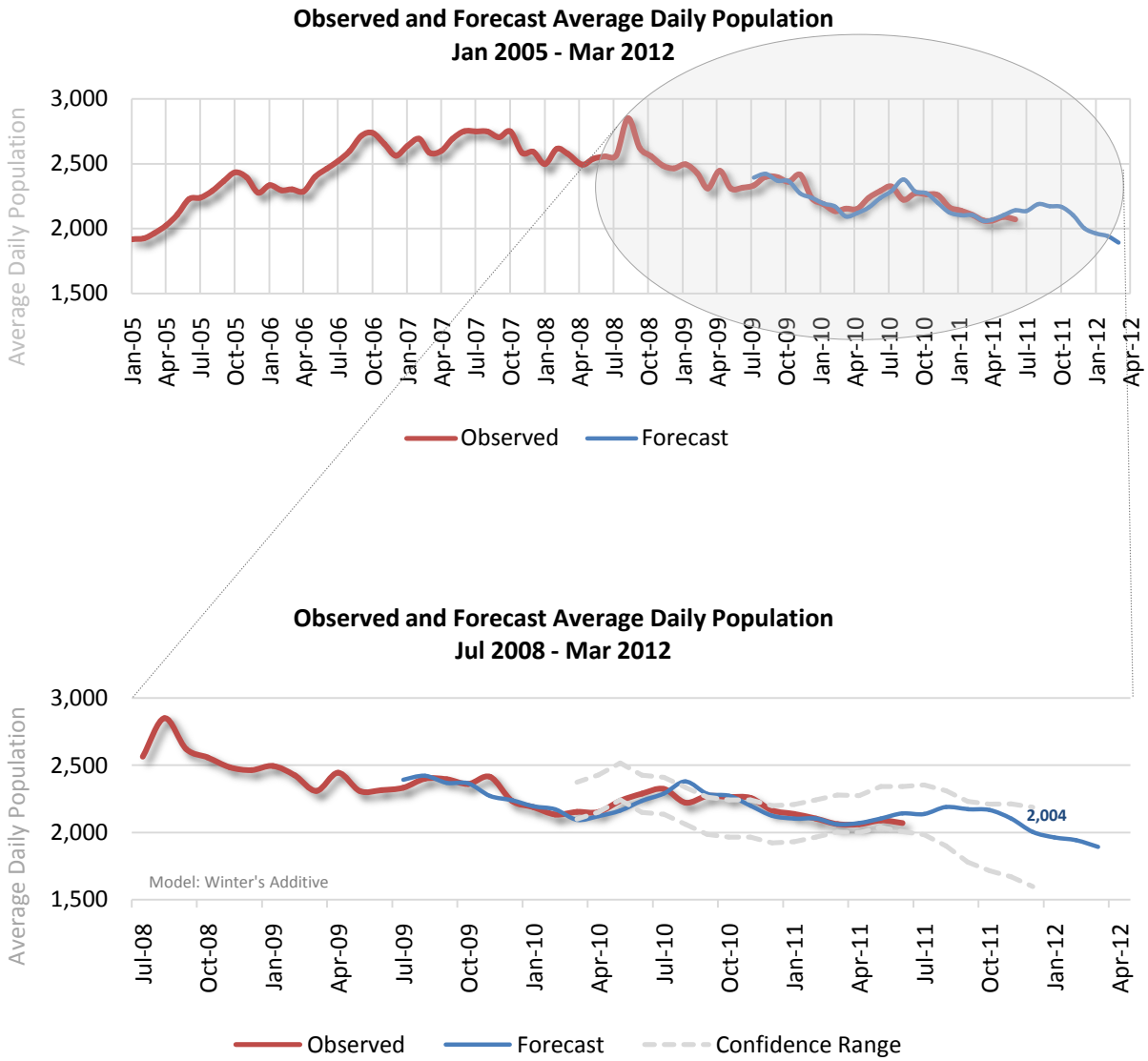
IV. Average Length of Stay and Jail Bed Days by Release Type³

Type of Release	Apr - Jun 2011			Apr - Jun 2010		
	Released	Bed Days	ALOS (days)	Released	Bed Days	ALOS (days)
Secured	3,956	15,223	4	4,419	15,152	3
Time Served	1,167	42,544	36	1,099	38,975	35
Unsecured	1,416	10,202	7	1,519	9,705	6
Dismissed	324	9,721	30	290	13,925	48
Probation/Parole	169	9,332	55	149	7,966	53
Other Jurisdiction	1,450	133,607	92	1,777	105,226	59

² Average length of stay is determined by averaging the reported ALOS for each group in the FY 2010 MCSO Detention Report. The Detention Report calculates ALOS as (Total Bed Days / Number of Jail Intakes). "Bed days" is calculated as the sum of the reported average daily population. An "intake" is defined as an individual receiving a housing assignment (those who bond out or are otherwise released prior to a housing assignment are not considered intakes).

³ This table examines ALOS based on the release reason. Length of stay is calculated as the number of days between the commit date and release date as found in the OMS Release Report (OIRRELDT). Only those individuals assigned housing in the jail will be found on the OMS report.

V. Trends and Forecasting of Jail Population



- Following a slight increase through the fall, ADP is projected to decline to 2,004 in December.