



Jail Population Trend Report

Jul - Sep 2012

Prepared by Mecklenburg County Manager's Office

The purpose of the report is to identify and track emerging trends that may influence the operation of the detention facilities. The data below captures events that occurred during the first quarter of FY 2013 and compares the observations to those of the previous quarter and year.

I. Average Jail Population by Facility

	Jul - Sep 2012 ADP	Apr - Jun 2012 ADP	Jul - Sep 2011 ADP	Change From	
				Previous Qtr	Jul - Sep 2011
Jail Central	1,511	1,410	1,472	7%	3%
Jail North	599	497	493	21%	22%
Work Release	36	43	63	-16%	-43%
All Facilities	2,146	1,929	2,027	11%	6%

ADP As A Percentage Of Design / Functional Capacity¹

	Jul - Sep 2012 D/F %	Apr - Jun 2012 D/F %	Jul - Sep 2011 D/F %	Facility Capacity	
				Design	Functional
Jail Central	79 / 93	74 / 87	77 / 91	1,904	1,618
Jail North	83 / 98	69 / 81	80 / 94	721	613
Work Release	40 / 47	48 / 56	66 / -	90	77
All Facilities	79 / 93	71 / 84	78 / 91	2,715	2,308

- ADP increased 6 percent (119 inmates) from the same period of the previous year.
- Work Release ADP declined 43 percent from the previous year.
- ADP closed to within 7 percent of functional capacity (162 inmates) during the first quarter.

¹ Design capacity is the total beds available in the facilities. Functional capacity represents 85 percent of design capacity. Functional capacity is considered the maximum number that can be housed while still permitting the proper segregation and movement of inmates according to gender, security risk, and related factors. Work Release does not consider functional capacity in its operations.

II. Characteristics of the Jail Population

	Jul – Sep 2012	Apr - Jun 2012	Jul – Sep 2011
Gender			
Adult Male	1,894 (88%)	1,700 (88%)	1,778 (88%)
Female	199 (9%)	169 (9%)	186 (9%)
Youthful Offender (Male)	53 (2%)	60 (3%)	63 (3%)
Race / Ethnicity			
African-American	1,465 (68%)	1,339 (69%)	1,397 (69%)
Caucasian	355 (17%)	296 (15%)	297 (15%)
Hispanic	313 (14%)	301 (15%)	311 (15%)
Others	18 (1%)	12 (1%)	11 (<1%)
Custody Type			
Pretrial	1,445 (67%)	1,290 (67%)	1,430 (71%)
Sentenced	139 (6%)	130 (7%)	237 (12%)
Federal- U.S Marshals	517 (24%)	498 (26%)	353 (17%)
Federal- Immigration	0 (%)	1 (<1%)	0 (%)
Federal- 287(g)	3 (<1%)	3 (<1%)	6 (<1%)
Federal- BOP	2 (<1%)	3 (<1%)	1 (<1%)

- Female ADP grew 17 percent from the previous quarter; 6 percent from previous year.
- Gender and race characteristics within the jail population were unchanged relative to the previous quarter and same period last year. Males (88 percent) and African-Americans (68 percent) remain the dominant population groups.
- Pretrial inmates comprised 67 percent of the population, down 4 percent from the previous year; unchanged from the previous quarter.
- Federal inmates, on average, represented 24 percent of the jail's population, a six percentage point increase from the previous year.

III. Booking and Release Composition²

	Jul - Sep 2012		Jul - Sep 2011	
	Avg. Monthly Composition	Avg. Length of Stay (days)	Avg. Monthly Composition	Avg. Length of Stay (days)
Intakes				
State	2,862	18	2,800	18
State Misdemeanant Program	12	189	-	-
Federal- USM	55	227	57	165
Federal- Immigration	2	1	6	1
Federal- 287(g)	8	1	18	2
Released				
State	3,000		2,936	
State Misdemeanant Program	17		-	
Federal- USM	52		53	
Federal- Immigration	2		8	
Federal- 287(g)	63		93	

- Average monthly intake volume for State inmates increased 2 percent from the previous year.
- Immigration and 287(g) releases have declined from the previous year (75 and 33 percent respectively).

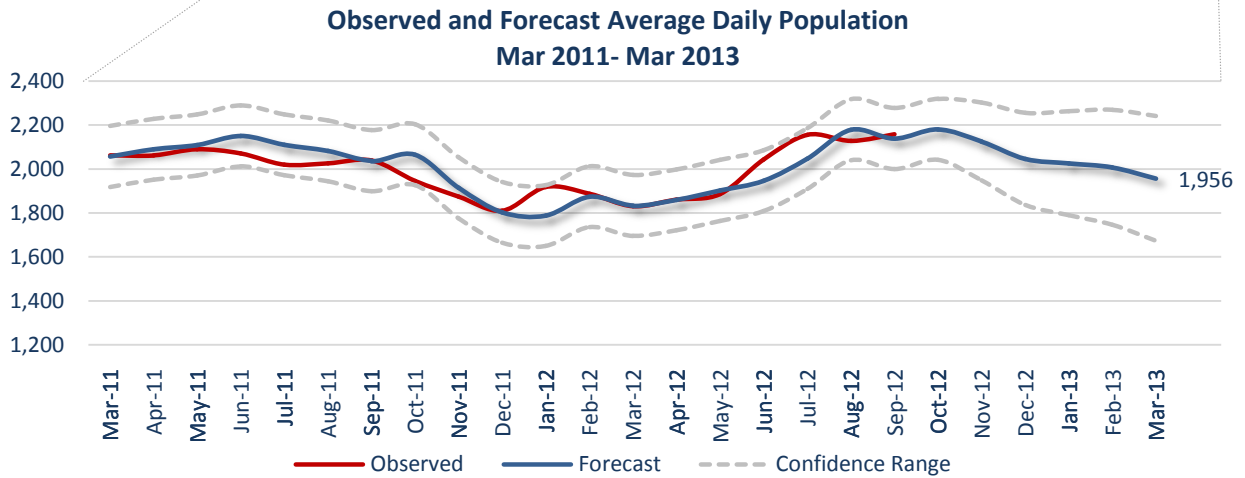
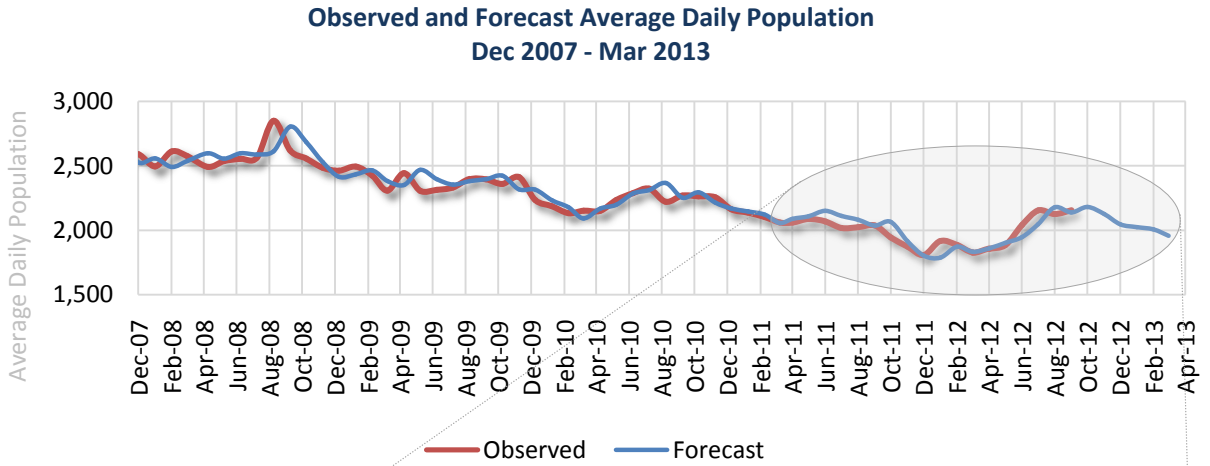
IV. Average Length of Stay and Jail Bed Days by Release Type³

Type of Release	Jul - Sep 2012			Jul - Sep 2011		
	Released	Bed Days	ALOS (days)	Released	Bed Days	ALOS (days)
Secured	3,337	15,293	5	3,655	14,868	4
Time Served	1,050	40,238	38	1,179	42,197	36
Unsecured	1,161	12,090	7	1,318	10,348	8
Dismissed	314	11,011	35	349	13,237	38
Probation/Parole	117	6,890	59	196	11,071	56
Other Jurisdiction	1,130	93,983	83	1,397	102,247	73

² Average length of stay is determined by averaging the reported ALOS for each group in the FY 2010 MCSO Detention Report. The Detention Report calculates ALOS as (Total Bed Days / Number of Jail Intakes). "Bed days" is calculated as the sum of the reported average daily population. An "intake" is defined as an individual receiving a housing assignment (those who bond out or are otherwise released prior to a housing assignment are not considered intakes).

³ This table examines ALOS based on the release reason. Length of stay is calculated as the number of days between the commit date and release date as found in the OMS Release Report (OIRRELDLT). Only those individuals assigned housing in the jail will be found on the OMS report.

V. Trends and Forecasting



- Given no changes within the criminal justice system, ADP is projected to enter a seasonal decline in November, falling to 1,956 inmates in March 2013.