



# Jail Population Trend Report

## Jul - Sep 2013

Prepared by Mecklenburg County Manager's Office

The purpose of this report is to identify and track emerging trends that may influence the operation of the detention facilities. The data below captures activity during the first quarter of FY 2014 and compares the observations to those of the previous quarter and year.

### I. Average Jail Population by Facility

	Jul - Sep 2013 ADP	Apr - Jun 2013 ADP	Jul - Sep 2012 ADP	Change From	
				Previous Qtr	Jul - Sep 2012
Jail Central	1,416	1,374	1,511	3%	-6%
Jail North	548	577	599	-5%	-9%
Work Release	31	22	36	40%	-14%
All Facilities	1,996	1,973	2,146	1%	-7%

### ADP As A Percentage Of Design / Functional Capacity<sup>1</sup>

	Jul - Sep 2013 D/F %	Apr - Jun 2013 D/F %	Jul - Sep 2012 D/F %	Facility Capacity	
				Design	Functional
Jail Central	74 / 88	72 / 85	79 / 93	1,904	1,618
Jail North	76 / 89	80 / 94	83 / 98	721	613
Work Release	34 / 40	24 / 29	40 / 47	90	77
All Facilities	74 / 86	73 / 85	79 / 93	2,715	2,308

- ADP decreased 7 percent (-150 inmates) from the same period of the previous year.
- Work Release ADP declined 14 percent from the previous year.
- ADP was 14 percent (312 inmates) below functional capacity during the first quarter.

<sup>1</sup> Design capacity is the total beds available in the facilities. Functional capacity represents 85 percent of design capacity. Functional capacity is considered the maximum number that can be housed while still permitting the proper segregation and movement of inmates according to gender, security risk, and related factors. Work Release does not consider functional capacity in its operations.

## II. Characteristics of the Jail Population

	Jul – Sep 2013	Apr - Jun 2013	Jul - Sep 2012
<b>Gender</b>			
<b>Adult Male</b>	1,772 (89%)	1,757 (89%)	1,894 (88%)
<b>Female</b>	166 (8%)	158 (8%)	199 (9%)
<b>Youthful Offender (Male)</b>	58 (3%)	58 (3%)	53 (2%)
<b>Race / Ethnicity</b>			
<b>African-American</b>	1,351 (68%)	1,342 (69%)	1,465 (68%)
<b>Caucasian</b>	347 (17%)	335 (17%)	355 (17%)
<b>Hispanic</b>	264 (13%)	261 (13%)	313 (14%)
<b>Others</b>	22 (1%)	19 (1%)	18 (1%)
<b>Custody Type</b>			
<b>Pretrial</b>	1,239 (64%)	1,277 (64%)	1,445 (67%)
<b>Sentenced</b>	103 (5%)	93 (5%)	139 (6%)
<b>Federal- U.S Marshals</b>	545 (28%)	555 (28%)	517 (24%)
<b>Federal- Immigration</b>	0 (0%)	0 (%)	0 (%)
<b>Federal- 287(g)</b>	1 (<1%)	1 (<1%)	3 (<1%)
<b>Federal- BOP</b>	2 (<1%)	1 (<1%)	2 (<1%)
<b>State Misdemeanant</b>	52 (3%)	58 (3%)	-
<b>Probation Quick Dip/Dunk</b>	<1 (<1%)	1 (<1%)	-

- Gender and race characteristics within the jail population were unchanged compared to the previous quarter and same period last year. Males (89 percent) and African-Americans (68 percent) remain the dominant population groups.
- Pretrial inmates comprised 64 percent of the population; a decline of 3 percentage points from the previous year and unchanged from the previous quarter.
- Federal inmates, on average, represented 28 percent of the jail's population, an increase of 4 percentage points from the previous year.

### III. Booking and Release Composition<sup>2</sup>

	Jul - Sep 2013		Jul - Sep 2012	
	Avg. Monthly Composition	Avg. Length of Stay (days)	Avg. Monthly Composition	Avg. Length of Stay (days)
<b>Intakes</b>				
State	2,475	18	2,862	18
State Misdemeanant Program	7	94	12	189
Federal- USM	62	215	55	227
Federal- Immigration	3	1	2	1
Federal- 287(g)	2	1	8	1
<b>Released</b>				
State	2,603		3,000	
State Misdemeanant Program	15		17	
Federal- USM	68		52	
Federal- Immigration	4		2	
Federal- 287(g)	24		63	

- Average monthly intake volume for State inmates decreased 14 percent from the previous year.

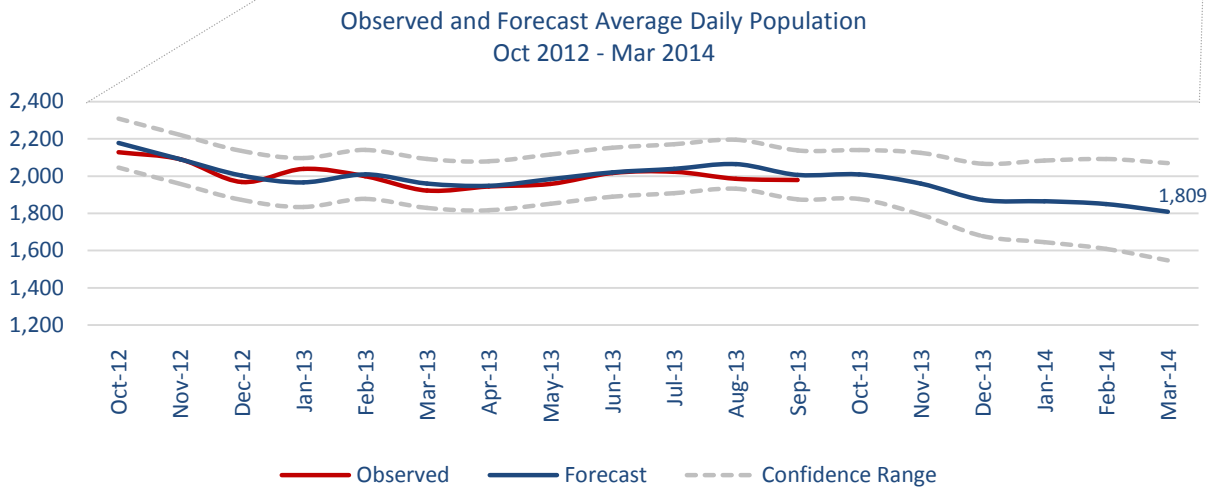
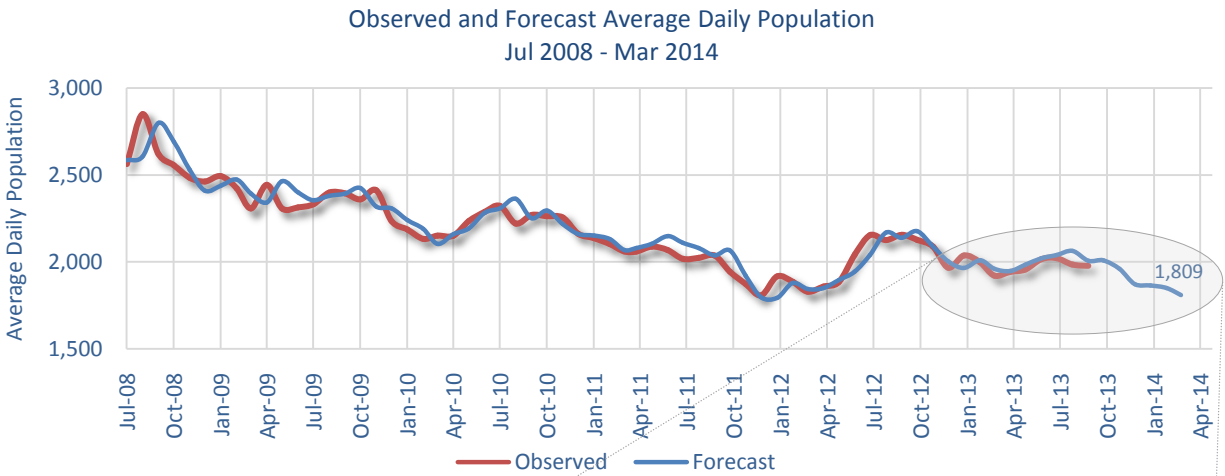
### IV. Average Length of Stay and Jail Bed Days by Release Type<sup>3</sup>

Type of Release	Jul - Sep 2013			Jul - Sep 2012		
	Released	Bed Days	ALOS (days)	Released	Bed Days	ALOS (days)
Secured	3,490	15,917	5	3,337	15,293	5
Time Served	806	33,307	41	1,050	40,238	38
Unsecured	1,198	10,445	9	1,161	12,090	7
Dismissed	350	12,878	37	314	11,011	35
Probation/Parole	144	7,214	50	117	6,890	59
Other Jurisdiction	1,310	106,602	81	1,130	93,983	83

<sup>2</sup> Average length of stay is determined by averaging the reported ALOS for each group in the FY 2010 MCSO Detention Report. The Detention Report calculates ALOS as (Total Bed Days / Number of Jail Intakes). "Bed days" is calculated as the sum of the reported average daily population. An "intake" is defined as an individual receiving a housing assignment (those who bond out or are otherwise released prior to a housing assignment are not considered intakes).

<sup>3</sup> This table examines ALOS based on the release reason. Length of stay is calculated as the number of days between the commit date and release date as found in the OMS Release Report (OIRRELDT). Only those individuals assigned housing in the jail will be found on the OMS report.

## V. Trends and Forecasting



- Given no changes within the criminal justice system, a seasonal decline is projected to reach a low ADP of 1,809 in March.