

Transportation Staff Meeting

June 6, 2012

2:00 PM

CMGC 601

AGENDA

1. Planning Area Boundary Expansion (Cook)

Description:

The June TCC agenda includes a request to provide guidance on MUMPO's planning area boundary. See the attached memorandum for more information.

Attachment: Memorandum: MPO Expansion-Guidance on Planning Area Boundaries

Access number: 704-432-5485



600 East Fourth Street
Charlotte, NC 28202
704-336-2205
www.mumpo.org

TO: TCC Members
FROM: Robert Cook, AICP
MUMPO Secretary
DATE: May 31, 2012
SUBJECT: **MPO Expansion-Guidance on Planning Area Boundaries**

REQUEST

The TCC is requested to provide guidance to the MPO on issues related to the expansion of MUMPO's planning area.

BACKGROUND

The Census Bureau released 2010 Census urbanized area information in March 2012. The size of the Charlotte urbanized area (UZA) increased substantially, which will require an expansion of the MPO's planning area to include the entire UZA, as well as adjoining areas expected to be urban in 20 years. The various tasks associated with finalizing the boundary, incorporating new members, etc. must be complete by March 2013.

GUIDANCE REQUESTED

Guidance on two key topics is being sought at this time.

1. Regional Planning Agreements

The Charlotte UZA extends into adjoining counties served by existing MPOs. It must be determined if MUMPO will cede its planning responsibilities for those areas to the adjoining MPOs.

a. Cabarrus County

The Charlotte UZA encroaches into Cabarrus County along the county line from a point just north of I-85 to approximately where E. Rocky River Road crosses into Cabarrus County and becomes E. Davidson Road. The Cabarrus-Rowan MPO implements the metropolitan planning process in this area.

b. York County

There are substantial encroachments into York County, mainly in the Ft. Mill and River Hills areas. Parts of the areas of encroachment had been in the Rock Hill UZA, but are now considered part of the Charlotte UZA. The Rock Hill-Ft. Mill Area Transportation Study (RFATS) implements the metropolitan planning process in this area.

c. Gaston County

There is a very small encroachment of the Charlotte UZA into Gaston County in the vicinity of NC 16 immediately after it crosses Mountain Island Lake. Much of the area is part of the Stonewater subdivision. Currently, the Gaston MPO implements the metropolitan planning process in this area; however, their staff has expressed some concern about continuing to do. Their concern is based upon the fact that

since the area is in the Charlotte UZA, and MUMPO is classified as a Transportation Management Area (TMA), then the Gaston MPO will be required to take on the responsibilities of a TMA if it continues to plan for this area in question.

The Charlotte UZA also extends into adjoining counties **not** served by an existing MPO. It must be determined if MUMPO will cede its planning responsibilities for those areas to the existing MPOs.

a. Catawba County

There is a very small encroachment of the Charlotte UZA into Catawba County in the vicinity of NC 150 immediately after it crosses the Catawba River. The area is less than one square mile. While no MPO currently implements the metropolitan planning process in this area, the Hickory MPO has expressed a desire to expand its planning area to include southeastern Catawba County.

b. Lancaster County

The Charlotte UZA encroaches upon Lancaster County in the panhandle area. As with the encroachment into Catawba County, no MPO currently implements the metropolitan planning process in the affected area. The Rock Hill-Ft. Mill Area Transportation Study (RFATS) has been in discussions with Lancaster County officials and indications appear that an invitation will be extended to Lancaster County to become a member of RFATS.

2. Boundary

MUMPO's boundary must be expanded to take in portions of Iredell and Lincoln counties, and expanded further into Union County.

a. Iredell County

The UZA extends north of I-40. The South Yadkin River appears to be a logical northern boundary for the expanded MPO. County and municipal staff members have indicated that the river appears to be a reasonable boundary.

b. Lincoln County

The UZA is limited to areas along Lake Norman. Discussions have taken place with the Lincoln County Planning Department staff regarding a logical western boundary.

c. Union County

The UZA now includes the town of Marshville; therefore, the town will become part of MUMPO's planning area. Boundary discussions are taking place with Union County and Rocky River RPO staff.

Guidance provided by the TCC and MPO in June will be used to assist staff as it continues its discussions with the adjoining communities. Staff anticipates that action on a final boundary will be presented to the TCC and MPO at the September meetings.

ATTACHMENTS

A map of the Charlotte UZA is attached.

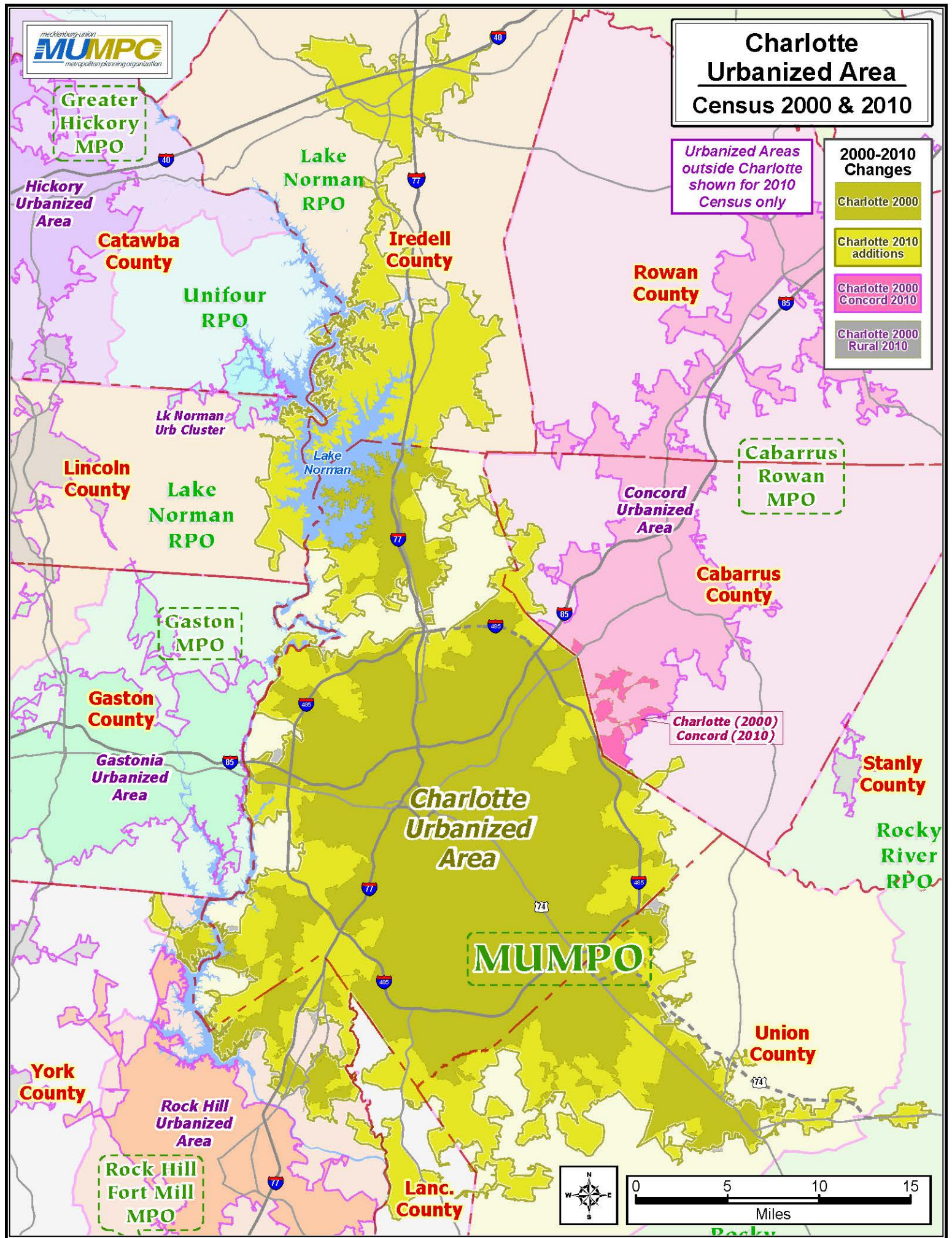


Charlotte Urbanized Area Census 2000 & 2010

Urbanized Areas outside Charlotte shown for 2010 Census only

2000-2010 Changes

- Charlotte 2000
- Charlotte 2010 additions
- Charlotte 2000 Concord 2010
- Charlotte 2000 Rural 2010



MUMPO

