



**CHARLOTTE-MECKLENBURG POLICE DEPARTMENT
ANNUAL SUMMARY: 2001**

**Darrel Stephens
Chief of Police**

Acknowledgements

Offenses, clearances, and arrests are classified and counted in accordance with the national Uniform Crime Reporting (UCR) program.

The jurisdiction population for 2000 was estimated at 625,810 by using the 2000 Census population for the county and subtracting the populations for the five incorporated towns with their own police services. Rates per population for 2000 were recalculated using this figure. The 2001 population (648339) was extrapolated by applying the Chamber of Commerce's yearly estimate of the percentage increase in the Mecklenburg County population to the 2000 base population for the jurisdiction.

Crime data was compiled with the assistance of Cassandra Chestnut and Doris Bowen who provide the monthly data entry for a number of charts. The district map was created by Monica Nguyen in the department's GIS system. Data was extracted from the police records systems, monthly UCR reports, and other monthly summary reports of traffic collisions and citation/warning ticket records entered by the police Records Bureau. Calls for service data was provided with the help of Steve Eudy, and Frank McDowell and Robert Corbett assisted with compiling data from some of the other mainframe files. Data was also supplied by the Training Academy, Recruitment Section, NEPS, HITS, and Animal Control.

Veronica Sorban
Research, Planning and Analysis Bureau
March 13, 2002

Table of Contents

Index Offenses Reported by the Charlotte-Mecklenburg Police Department:2000-2001	1
Index Offenses by Type: 2000	1
Index Offenses: 1997-2001	2
Index Offenses: 1997-2001 (Bar Chart)	3
Index Offense Rates per 100,000 Population: 1997-2001	4
Annual Percentage Changes in Index Offenses and Rates: 1997-2001 (Line Chart)	5
Index Offenses Reported by Month: 1997-2001	6
Percentage Changes in Cumulative Monthly Total Index Offenses: 2000-2001	7
Five Year Monthly Index Offenses by Category (Line Charts):	
Homicide	8
Rape	8
Robbery	9
Aggravated Assault	9
Residential Burglary	10
Commercial Burglary	10
Larceny	11
Larceny from Auto	11
Vehicle Theft	12
Arson	12
Index Clearances Reported by the Charlotte-Mecklenburg Police Department	13
District and Service Area Offense Totals: 2000-2001	
Map of Districts and Service Area Boundaries	14
Index Offenses by Service Areas	15-17
Index Offenses by Service Areas: Violent vs. Property (Bar Chart)	18
Violent and Property Index Offenses by District: 2000-2001 (Bar Chart)	19
Part 2 and Other Offenses Reported by the Charlotte-Mecklenburg Police Department	20
Non-Criminal Incidents Reported by the Charlotte-Mecklenburg Police Department	20
Arrests Reported by the Charlotte-Mecklenburg Police Department: 2000-2001	21
Arrests by General Category (Bar Chart)	22
Arrests by Juvenile (Under 18 Years Old) and Adult (18 and Older) (Bar Chart)	22
Calls for Service:	
Calls for Service Records Logged by Communications Section by "Ten-Code"	23
Calls for Service Requiring Response by Police Unit	24
Non-Emergency Police Services Unit Summary	25
Alarm Permit Registration and Calls	26
Traffic Collisions Reported by the Charlotte-Mecklenburg Police Department: 2000-2001	27
Traffic Collisions by Type: 2001 (Pie Chart)	27
Traffic Collisions by District (Bar Chart)	27
Citations Issued by the Charlotte-Mecklenburg Police Department: 2000-2001	28
Citations Enforcement by Issuing Unit (Bar Chart)	29
Citations Issued by Month: 1999-2001	29
Warning Tickets Issued by Charlotte-Mecklenburg Police Department: 2000-2001	30
Warning Tickets Issued by Month: 2000-2001 (Bar Chart)	30

Recruitment Section: Applicants Processed and Hired	31
Training Academy Training Hours Summary	32
Animal Control Unit Summary	
Animal Control Calls for Service by Month	33
Appendix:	
Table of Index Crimes Reported by Charlotte Police/Charlotte Mecklenburg Police Departments: 1971-2001	i
Table of Index Offense Rates per 100,000 Population: 1971-2001	ii
Index Offense Rates per 100,000 Population: 1971-2001 (Bar Chart)	iii
Violent Index Offense Rates per 100,000 Population: 1971-2001 (Bar Chart)	iv
Property Index Offense Rates per 100,000 Population: 1971-2001 (Bar Chart)	v
Uniform Crime Reporting Procedures	vi

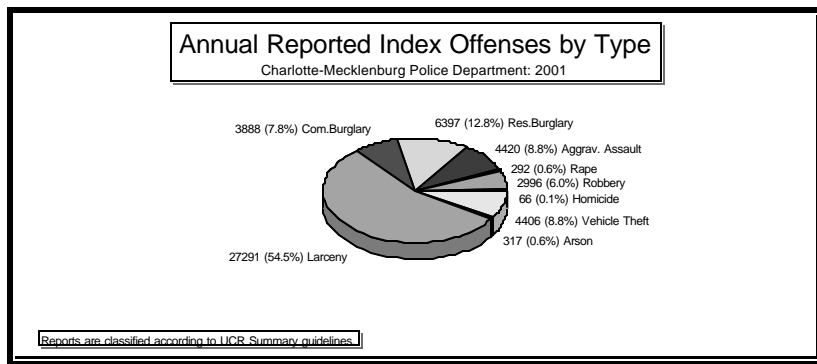
INDEX OFFENSES REPORTED TO THE CHARLOTTE-MECKLENBURG POLICE DEPARTMENT 2000-2001							
Index Categories	Number of Offenses:			* Rate per Estimated 100,000 Population:			
	2000	2001	% Change	2000 (Est. Pop. 625810)	2001 (Est. Pop. 648339)	% Change	
HOMICIDE (MURDER & NON-NEGLIGENT MANSLAUGHTER)	75	66	-12.0%	12.0	10.2	-15.1%	
RAPE TOTAL	304	292	-3.9%	48.6	45.0	-7.3%	
ACTUAL	276	273	-1.1%	44.1	42.1	-4.5%	
ATTEMPT	28	19	-32.1%	4.5	2.9	-34.5%	
ROBBERY TOTAL	2651	2996	13.0%	423.6	462.1	9.1%	
ARMED	2026	2331	15.1%	323.7	359.5	11.1%	
STRONG-ARM	625	665	6.4%	99.9	102.6	2.7%	
AGGRAVATED ASSAULT TOTAL*	4482	4420	-1.4%	716.2	681.7	-4.8%	
BURGLARY TOTAL	9598	10285	7.2%	1533.7	1586.4	3.4%	
RESIDENTIAL	6518	6397	-1.9%	1041.5	986.7	-5.3%	
COMMERCIAL	3080	3888	26.2%	492.2	599.7	21.8%	

FORCE	7020	7863	12.0%	1121.7	1212.8	8.1%	
NO FORCE	1842	1696	-7.9%	294.3	261.6	-11.1%	
ATTEMPT	736	726	-1.4%	117.6	112.0	-4.8%	
LARCENY TOTAL	27789	27291	-1.8%	4440.5	4209.4	-5.2%	
\$200 AND OVER	11095	12237	10.3%	1772.9	1887.4	6.5%	
\$50 TO \$200	4764	5518	15.8%	761.3	851.1	11.8%	
UNDER \$50	11930	9536	-20.1%	1906.3	1470.8	-22.8%	

FROM AUTO	12461	11966	-4.0%	1991.2	1845.6	-7.3%	
BICYCLE	252	175	-30.6%	40.3	27.0	-33.0%	
SHOPLIFTING	3050	3477	14.0%	487.4	536.3	10.0%	
OTHERS	12024	11673	-2.9%	1921.3	1800.4	-6.3%	
VEHICLE THEFT TOTAL	4561	4406	-3.4%	728.8	679.6	-6.8%	
ARSON TOTAL	313	317	1.3%	50.0	48.9	-2.2%	
TOTALS	49773	50073	0.6%	7953.4	7723.3	-2.9%	
VIOLENT	7512	7774	3.5%	1200.4	1199.1	-0.1%	
PROPERTY	42261	42299	0.1%	6753.0	6524.2	-3.4%	

Yearly population increases for the Charlotte-Mecklenburg Police jurisdiction are based on the estimated yearly increases in the total county population published by the Chamber of Commerce Research Section.

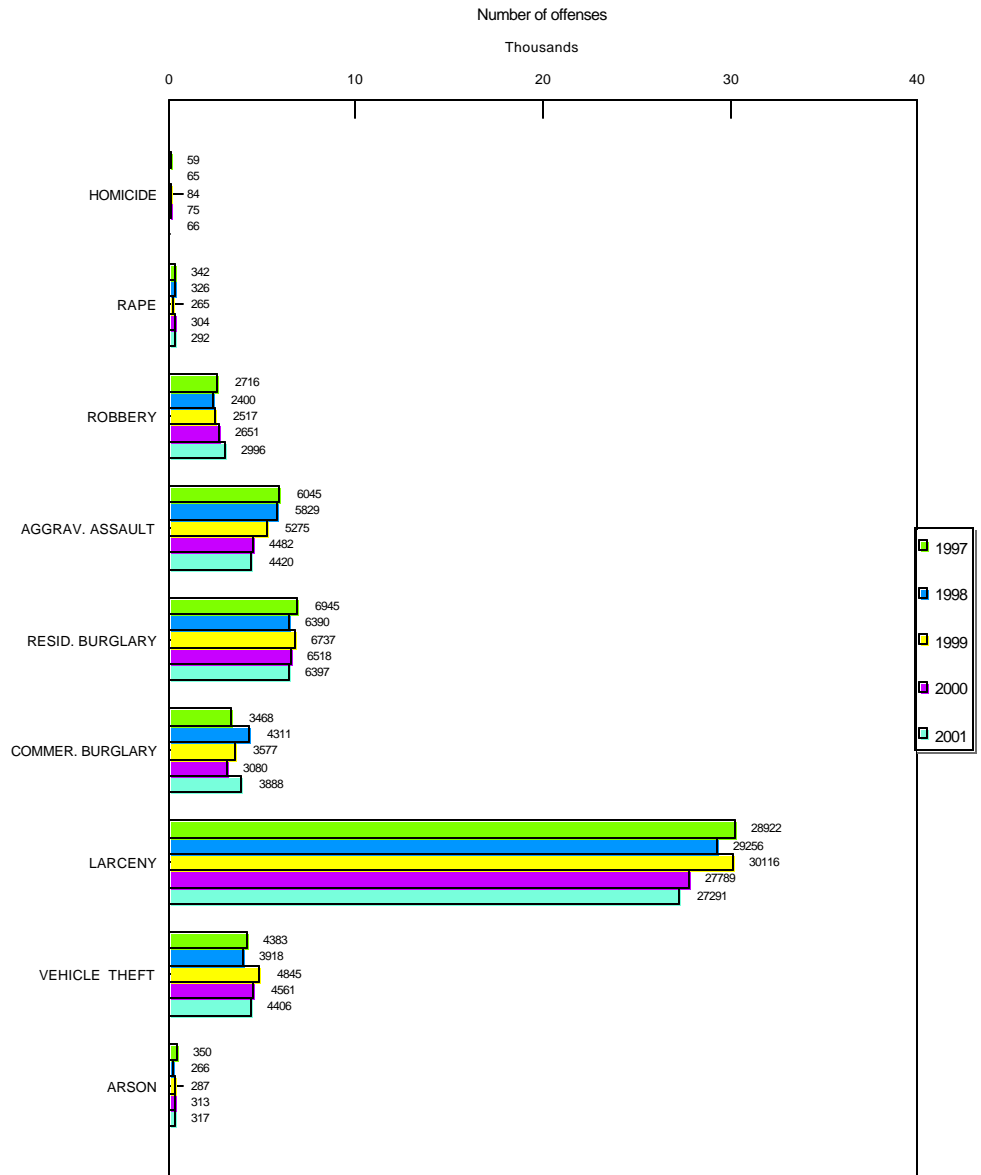
*In December, 2001, the aggravated assault totals were adjusted to include 210 offenses not counted in earlier months this year due to errors in the data on the weapons involved.



**INDEX OFFENSES REPORTED TO THE CHARLOTTE-MECKLENBURG POLICE DEPARTMENT
FIVE YEAR TRENDS: 1997-2000**

Index Categories	1997	1998	% Change from Previous Year *	1999	% Change from Previous Year *	2000	% Change from Previous Year *	2001	% Change from Previous Year *	% Change from 1997
HOMICIDE	59	65	10.2% *	84	29.2% *	75	-10.7% *	66	-12.0% *	11.9%
RAPE	342	326	-4.7% *	265	-18.7% *	304	14.7% *	292	-3.9% *	-14.6%
ROBBERY	2716	2400	-11.6% *	2517	4.9% *	2651	5.3% *	2996	13.0% *	10.3%
AGGRAVATED ASSAULT	6045	5829	-3.6% *	5275	-9.5% *	4482	-15.0% *	4420	-1.4% *	-26.9%
BURGLARY	10413	10701	2.8% *	10314	-3.6% *	9598	-6.9% *	10285	7.2% *	-1.2%
RESIDENTIAL	6945	6390	-8.0% *	6737	5.4% *	6518	-3.3% *	6397	-1.9% *	-7.9%
COMMERCIAL	3468	4311	24.3% *	3577	-17.0% *	3080	-13.9% *	3888	26.2% *	12.1%
LARCENY	28922	29256	1.2% *	30116	2.9% *	27789	-7.7% *	27291	-1.8% *	-5.6%
FROM AUTO	12623	12876	2.0% *	13625	5.8% *	12461	-8.5% *	11966	-4.0% *	-5.2%
BICYCLE	582	567	-2.6% *	399	-29.6% *	252	-36.8% *	175	-30.6% *	-69.9%
SHOPLIFTING	3893	3619	-7.0% *	3569	-1.4% *	3050	-14.5% *	3477	14.0% *	-10.7%
OTHERS	11844	12194	3.0% *	12523	2.7% *	12024	-4.0% *	11673	-2.9% *	-1.4%
VEHICLE THEFT	4383	3918	-10.6% *	4845	23.7% *	4561	-5.9% *	4406	-3.4% *	0.5%
ARSON	350	266	-24.0% *	287	7.9% *	313	9.1% *	317	1.3% *	-9.4%
TOTAL INDEX	53230	52761	-0.9% *	53703	1.8% *	49773	-7.3% *	50073	0.6% *	-5.9%
VIOLENT	9162	8620	-5.9% *	8141	-5.6% *	7512	-7.7% *	7774	3.5% *	-15.1%
PROPERTY	44068	44141	0.2% *	45562	3.2% *	42261	-7.2% *	42299	0.1% *	-4.0%

**INDEX OFFENSES REPORTED TO THE CHARLOTTE-MECKLENBURG POLICE DEPARTMENT
FIVE YEAR TRENDS: 1997-2001**

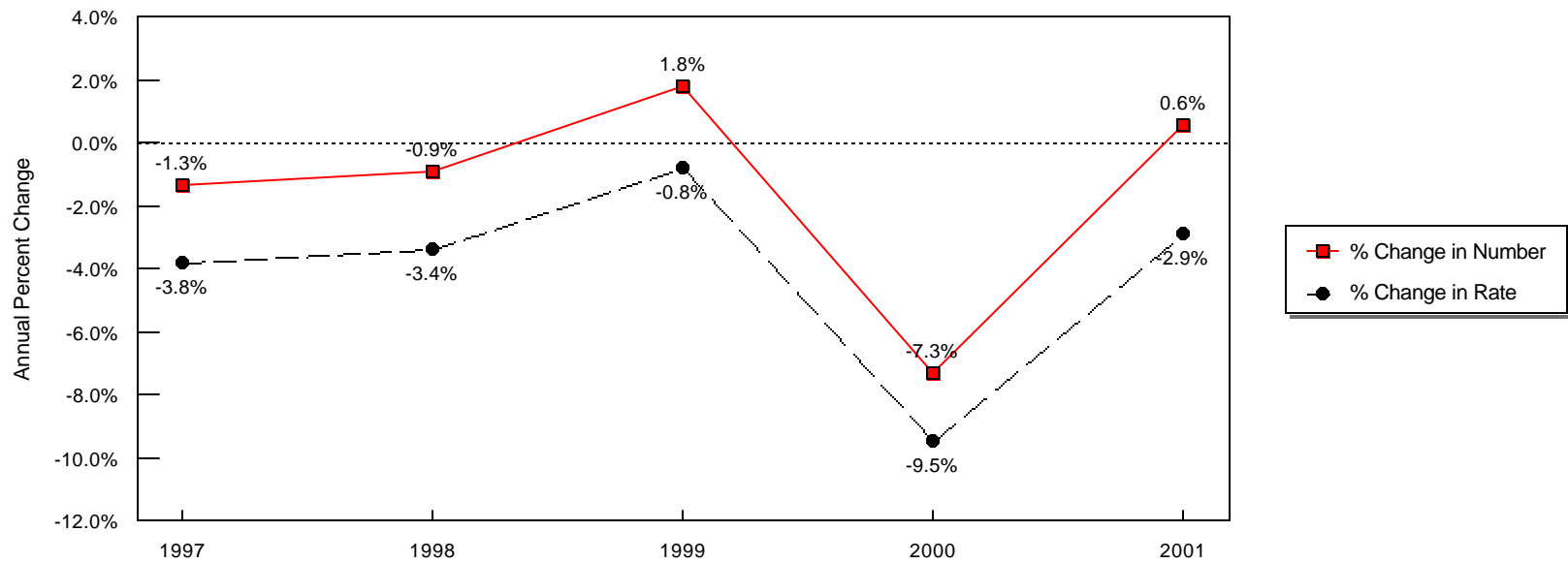


**INDEX OFFENSE RATES PER 100,000 POPULATION REPORTED BY THE CHARLOTTE-MECKLENBURG POLICE DEPARTMENT
FIVE YEAR TRENDS: 1997-2001**

Index Categories	1997 580664	1998 595762	% Change from Previous Year *	1999 611251	% Change from Previous Year *	2000 625810	% Change from Previous Year *	2001 648339	% Change from Previous Year *	% Change from 1997
HOMICIDE	10.2	10.9	7.4% *	13.7	26.0% *	12.0	-12.8% *	10.2	-15.1% *	0.2%
RAPE	58.9	54.7	-7.1% *	43.4	-20.8% *	48.6	12.0% *	45.0	-7.3% *	-23.5%
ROBBERY	467.7	402.8	-13.9% *	411.8	2.2% *	423.6	2.9% *	462.1	9.1% *	-1.2%
AGGRAVATED ASSAULT	1041.0	978.4	-6.0% *	863.0	-11.8% *	716.2	-17.0% *	681.7	-4.8% *	-34.5%
BURGLARY	1793.3	1796.2	0.2% *	1687.4	-6.1% *	1533.7	-9.1% *	1586.4	3.4% *	-11.5%
RESIDENTIAL	1196.0	1072.6	-10.3% *	1102.2	2.8% *	1041.5	-5.5% *	986.7	-5.3% *	-17.5%
COMMERCIAL	597.2	723.6	21.2% *	585.2	-19.1% *	492.2	-15.9% *	599.7	21.8% *	0.4%
LARCENY	4980.8	4910.7	-1.4% *	4926.9	0.3% *	4440.5	-9.9% *	4209.4	-5.2% *	-15.5%
FROM AUTO	2173.9	2161.3	-0.6% *	2229.0	3.1% *	1991.2	-10.7% *	1845.6	-7.3% *	-15.1%
BICYCLE	100.2	95.2	-5.0% *	65.3	-31.4% *	40.3	-38.3% *	27.0	-33.0% *	-73.1%
SHOPLIFTING	670.4	607.5	-9.4% *	583.9	-3.9% *	487.4	-16.5% *	536.3	10.0% *	-20.0%
OTHERS	2039.7	2046.8	0.3% *	2048.7	0.1% *	1921.3	-6.2% *	1800.4	-6.3% *	-11.7%
VEHICLE THEFT	754.8	657.6	-12.9% *	792.6	20.5% *	728.8	-8.1% *	679.6	-6.8% *	-10.0%
ARSON	60.3	44.6	-25.9% *	47.0	5.2% *	50.0	6.5% *	48.9	-2.2% *	-18.9%
TOTAL INDEX	9167.1	8856.1	-3.4% *	8785.8	-0.8% *	7953.4	-9.5% *	7723.3	-2.9% *	-15.8%
VIOLENT PROPERTY	1577.8 7589.2	1446.9 7409.2	-8.3% * -2.4% *	1331.9 7453.9	-8.0% * 0.6% *	1200.4 6753.0	-9.9% * -9.4% *	1199.1 6524.2	-0.1% * -3.4% *	-24.0% -14.0%

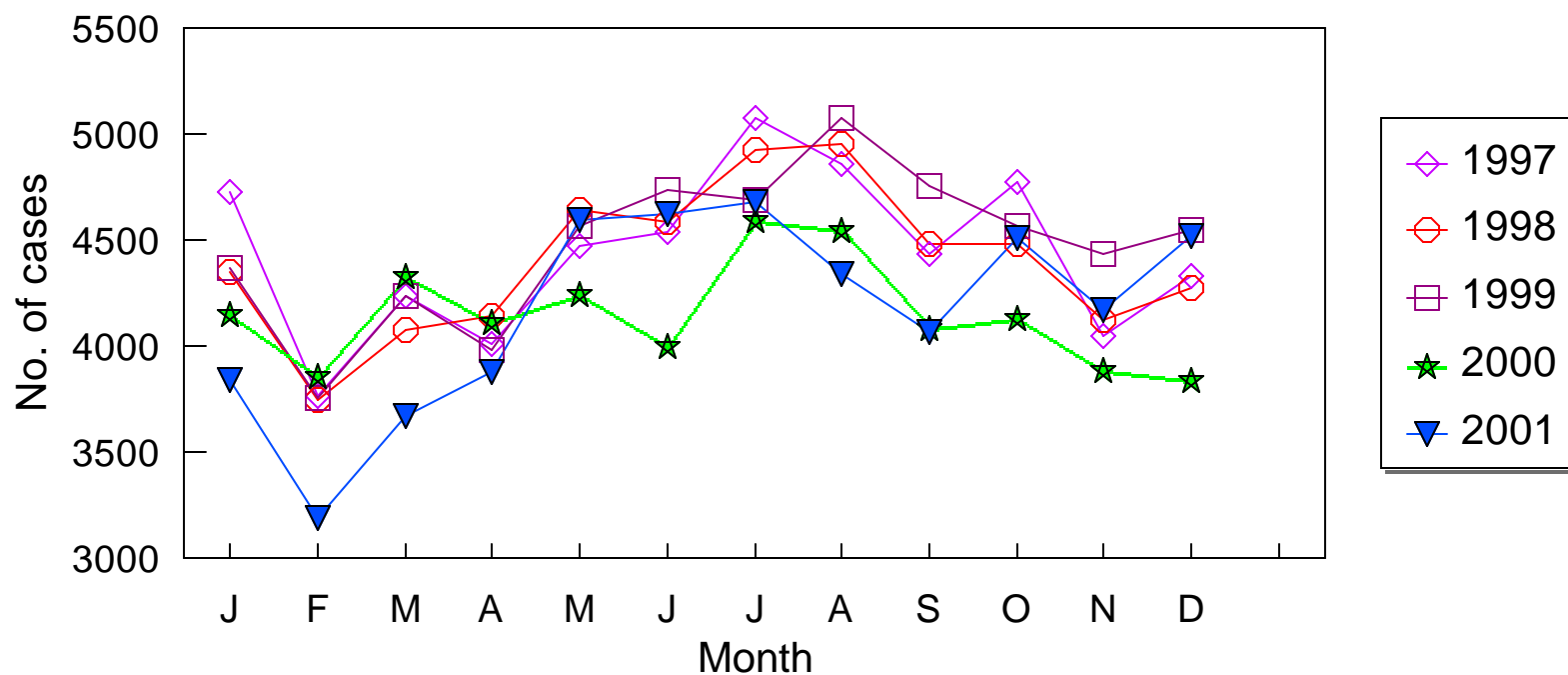
*NOTE: These are estimates for the population of the jurisdiction. Yearly population increases for the Charlotte-Mecklenburg Police jurisdiction are based on the estimated yearly increases in the total county population published by the Chamber of Commerce Research Section.

**Five Year Trends in Annual Percent Change in Reported Index and in Rate per Population
in the Charlotte-Mecklenburg Police Jurisdiction: 1997-2001**



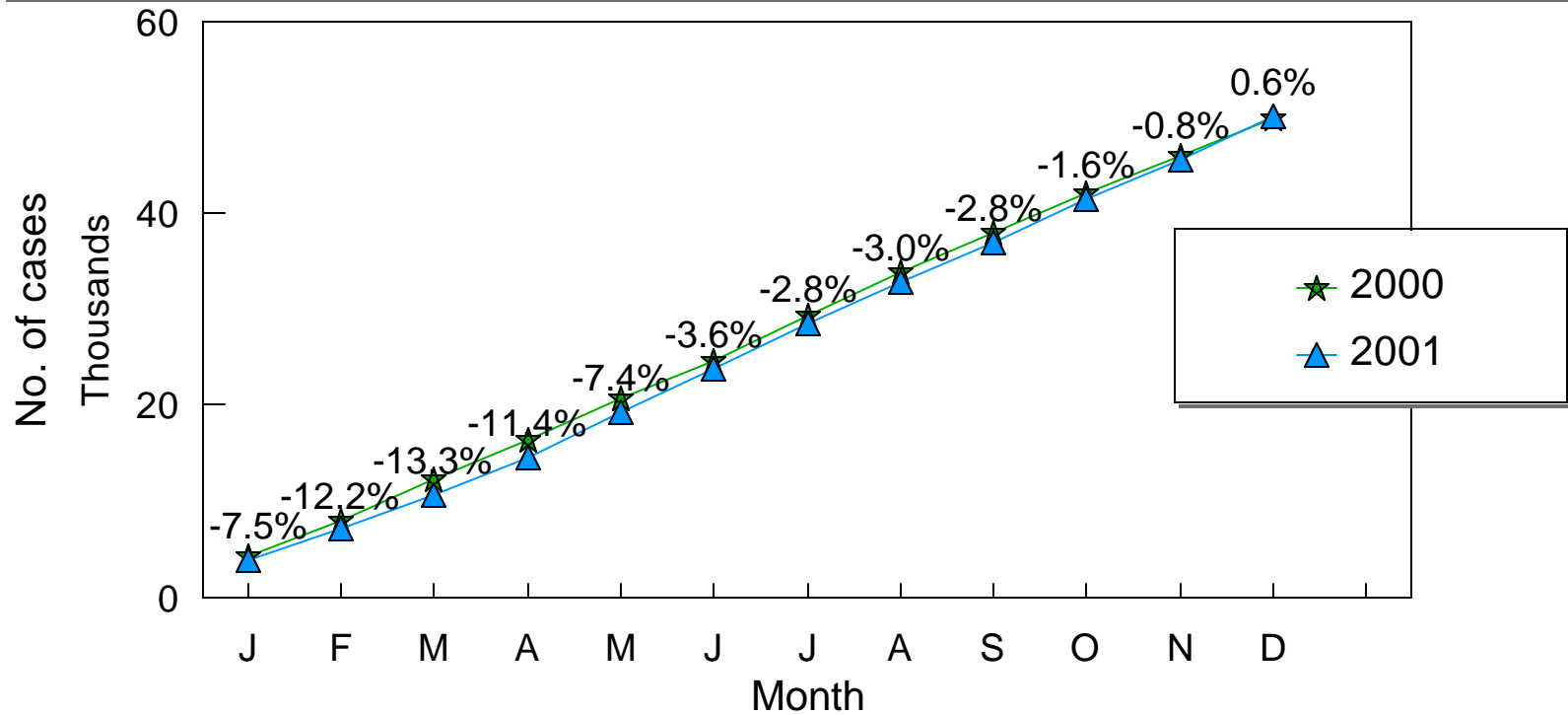
Total Index Offenses Reported by Month

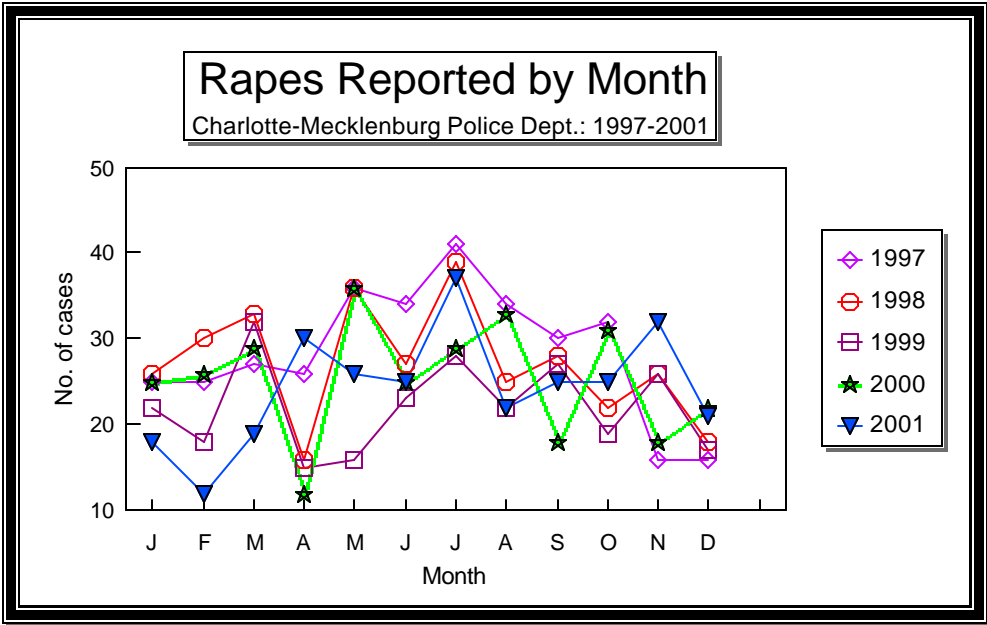
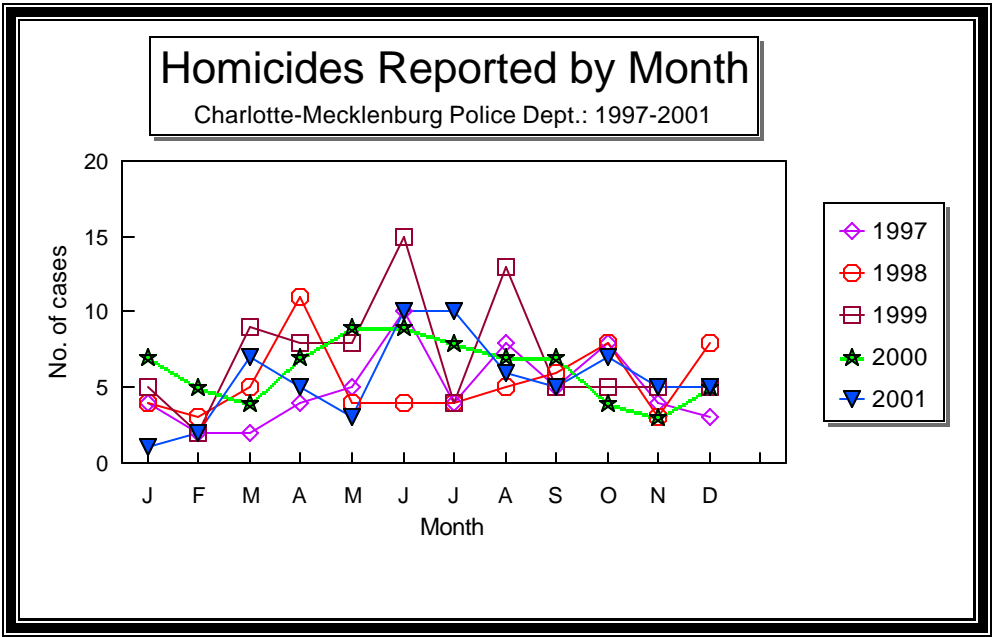
Charlotte-Mecklenburg Police Dept.: 1997-2001

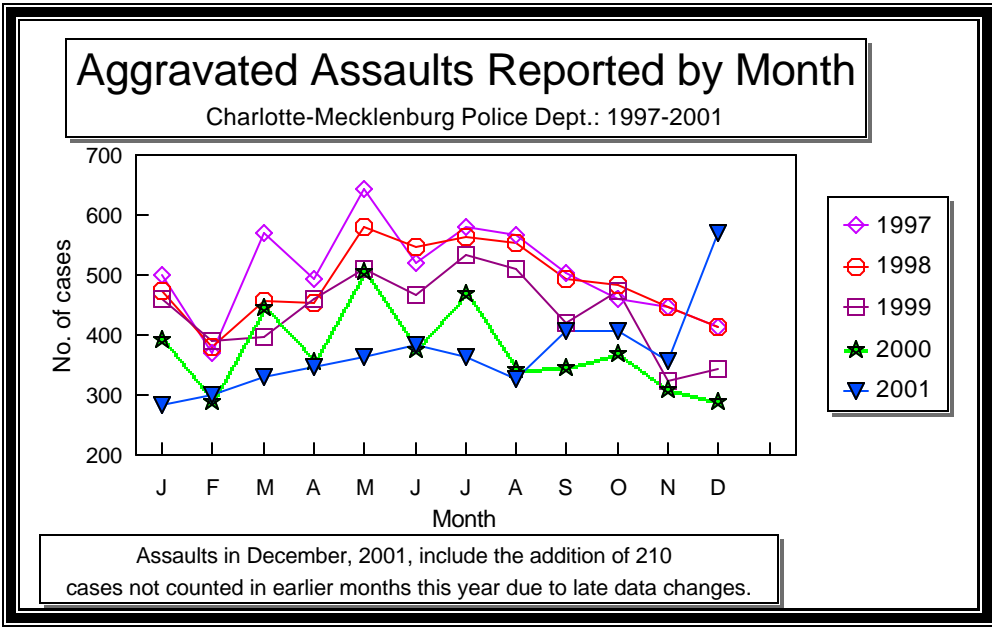
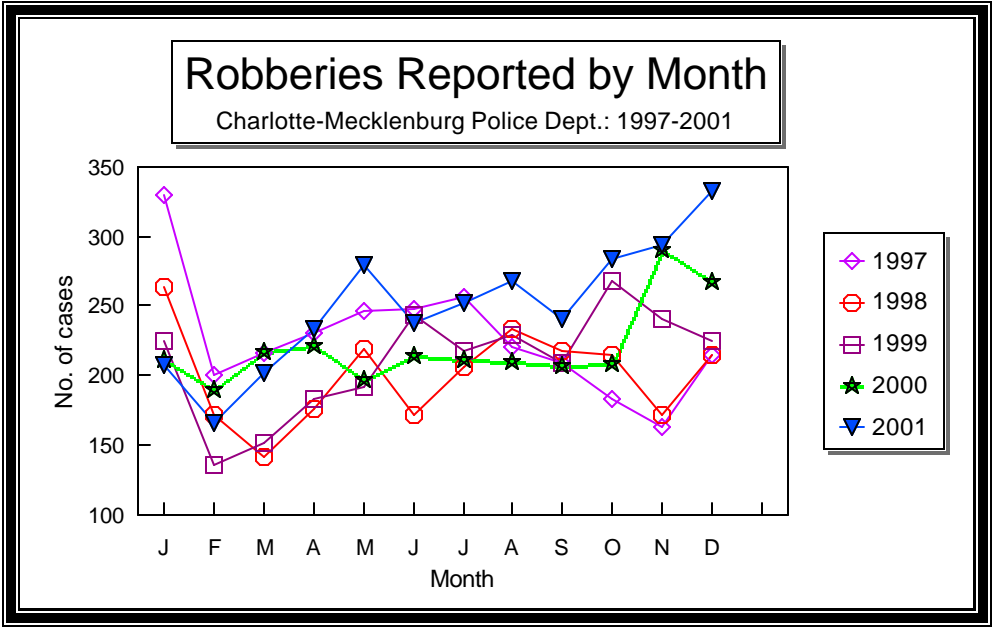


Monthly Cumulative Offense Trends & % Changes

Charlotte-Mecklenburg Police Dept.: 2000-2001

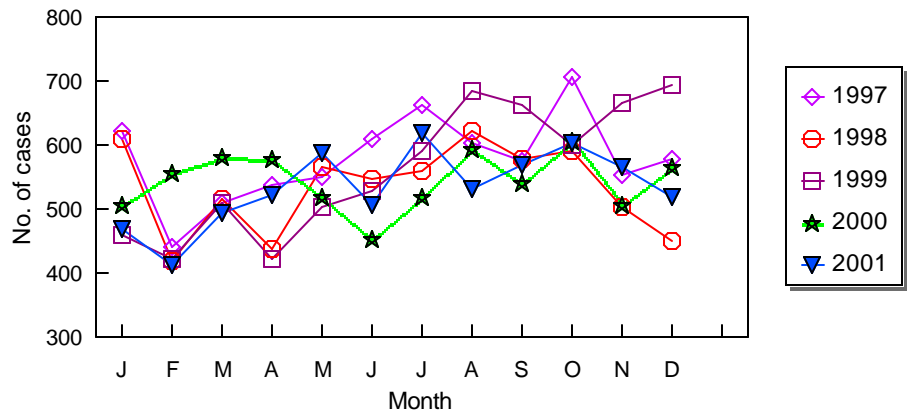






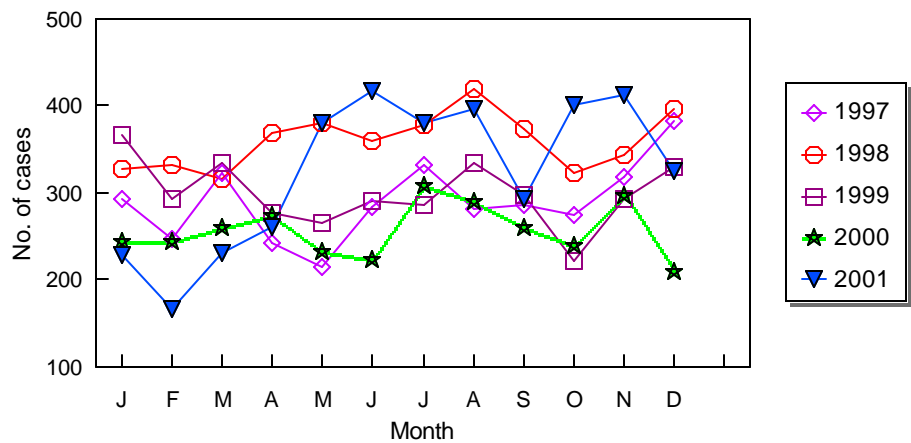
Residential Burglaries Reported by Month

Charlotte-Mecklenburg Police Dept.: 1997-2001



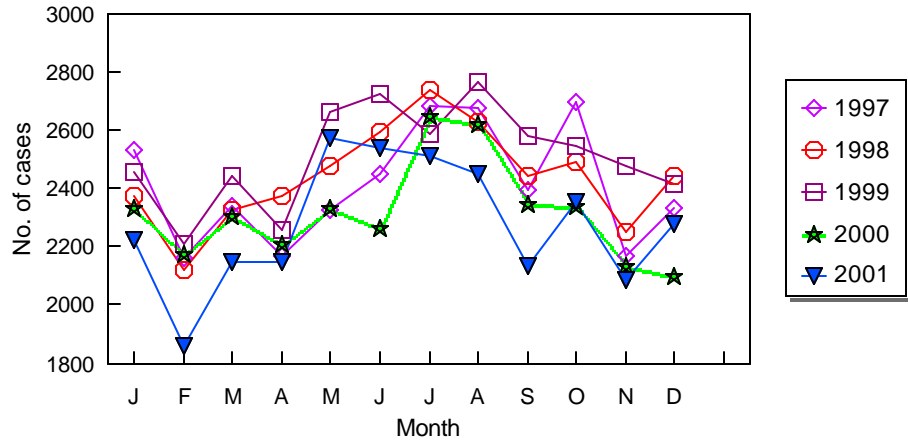
Commercial Burglaries Reported by Month

Charlotte-Mecklenburg Police Dept.: 1997-2001



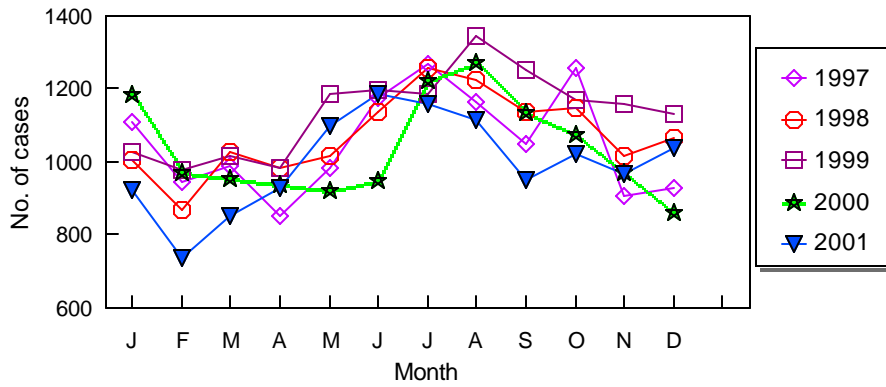
Larcenies Reported by Month

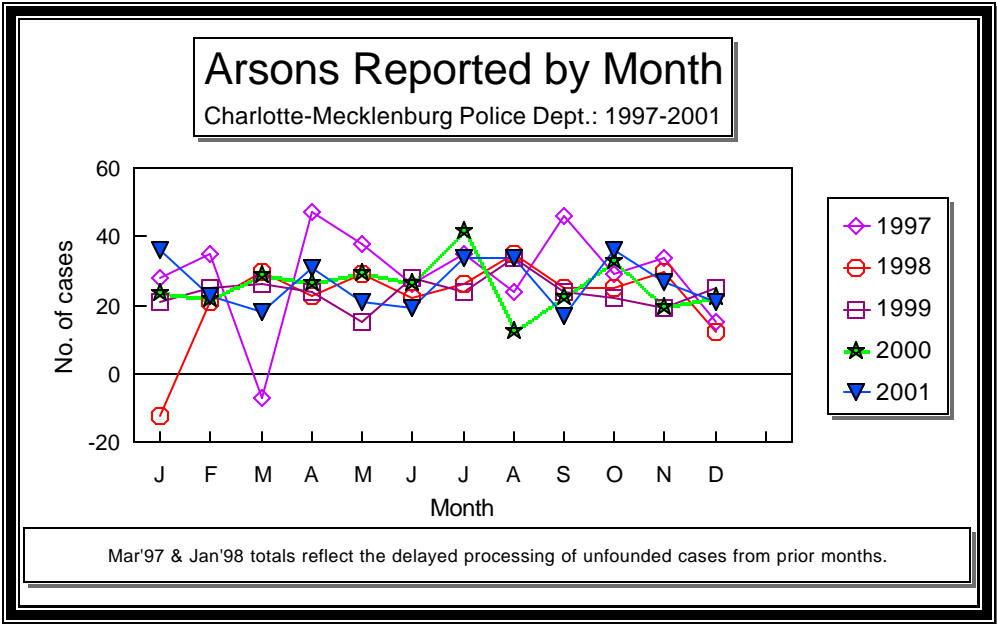
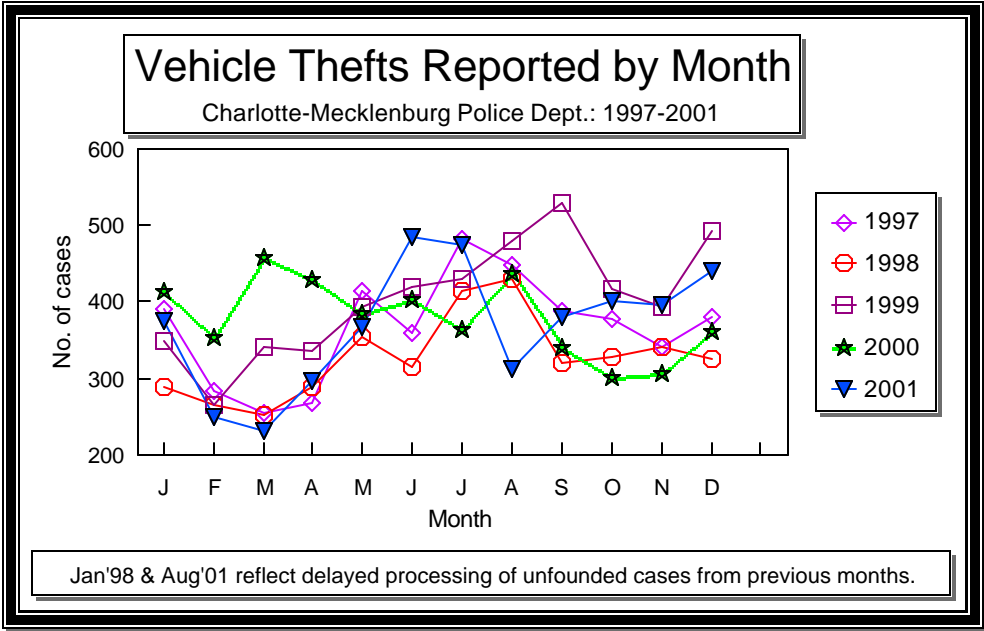
Charlotte-Mecklenburg Police Dept.: 1997-2001



Larcenies from Vehicle Reported by Month

Charlotte-Mecklenburg Police Dept.: 1997-2001





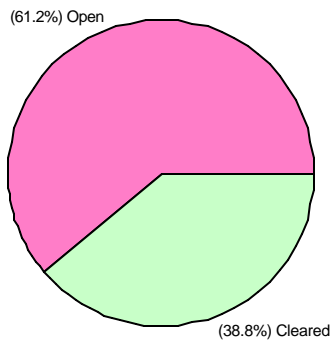
**INDEX CLEARANCES REPORTED BY THE CHARLOTTE-MECKLENBURG POLICE DEPARTMENT
2000-2001**

INDEX CATEGORIES	2000:		*	2001:		*	% Change in Number of Cases Cleared
	Number	Rate		Number	Rate		
MURDER & NON-NEGLIGENT MANSLAUGHTER TOTAL	58	77.3%	*	56	84.8%	*	-1.8%
RAPE TOTAL	207	68.1%	*	156	53.4%	*	-24.6%
ACTUAL	180	65.2%	*	141	51.6%	*	-21.7%
ATTEMPT	17	60.7%	*	15	78.9%	*	-11.8%
ROBBERY TOTAL	827	31.2%	*	784	26.2%	*	-5.2%
ARMED	622	30.7%	*	623	26.7%	*	0.2%
STRONG-ARM	205	32.8%	*	161	24.2%	*	-21.5%
AGGRAVATED ASSAULT TOTAL	2377	53.0%	*	2023	45.8%	*	-14.9%
BURGLARY TOTAL	908	9.5%	*	951	9.2%	*	4.7%
RESIDENTIAL	700	10.7%	*	675	10.6%	*	-3.6%
COMMERCIAL	208	6.8%	*	276	7.1%	*	32.7%
LARCENY TOTAL	3086	11.1%	*	3189	11.7%	*	3.3%
FROM AUTO	298	2.4%	*	348	2.9%	*	16.8%
BICYCLE	14	5.6%	*	15	8.6%	*	7.1%
SHOPLIFTING	1517	49.7%	*	1809	52.0%	*	19.2%
OTHERS	1257	10.5%	*	1017	8.7%	*	-19.1%
VEHICLE THEFT TOTAL	1117	24.5%	*	1124	25.5%	*	0.6%
ARSON TOTAL	76	24.3%	*	65	20.5%	*	-14.5%
TOTALS	8656	17.4%	*	8348	16.7%	*	-3.6%
VIOLENT PROPERTY	3469	46.2%	*	3019	38.8%	*	-13.0%
	5187	12.3%	*	5329	12.6%	*	2.7%

NOTE: According to Uniform Crime Reporting procedures, a case is cleared either by the arrest of an offender in the case or by an "exceptional clearance." An exceptional clearance occurs when law enforcement has identified an offender in the case, but for reasons outside law enforcement control (death of the offender, refusal of the victim or district attorney to prosecute, refusal to extradite, etc.), an arrest is not made.

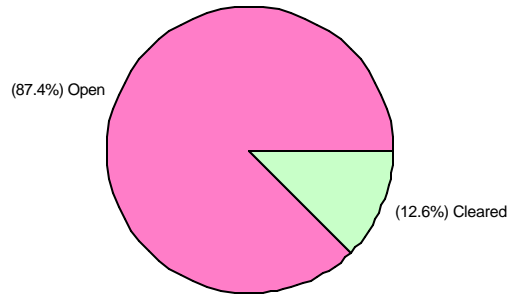
The "clearance rate" is defined by Uniform Crime Reporting procedures as the percentage that represents the number of cases cleared during the year divided by the number of cases reported in that same year. Some clearances may be for cases that occurred in previous years.

Violent Index Offense Clearance Rates
Charlotte-Mecklenburg Police Department: 2001



Cleared case totals include cases cleared by arrest or exception.

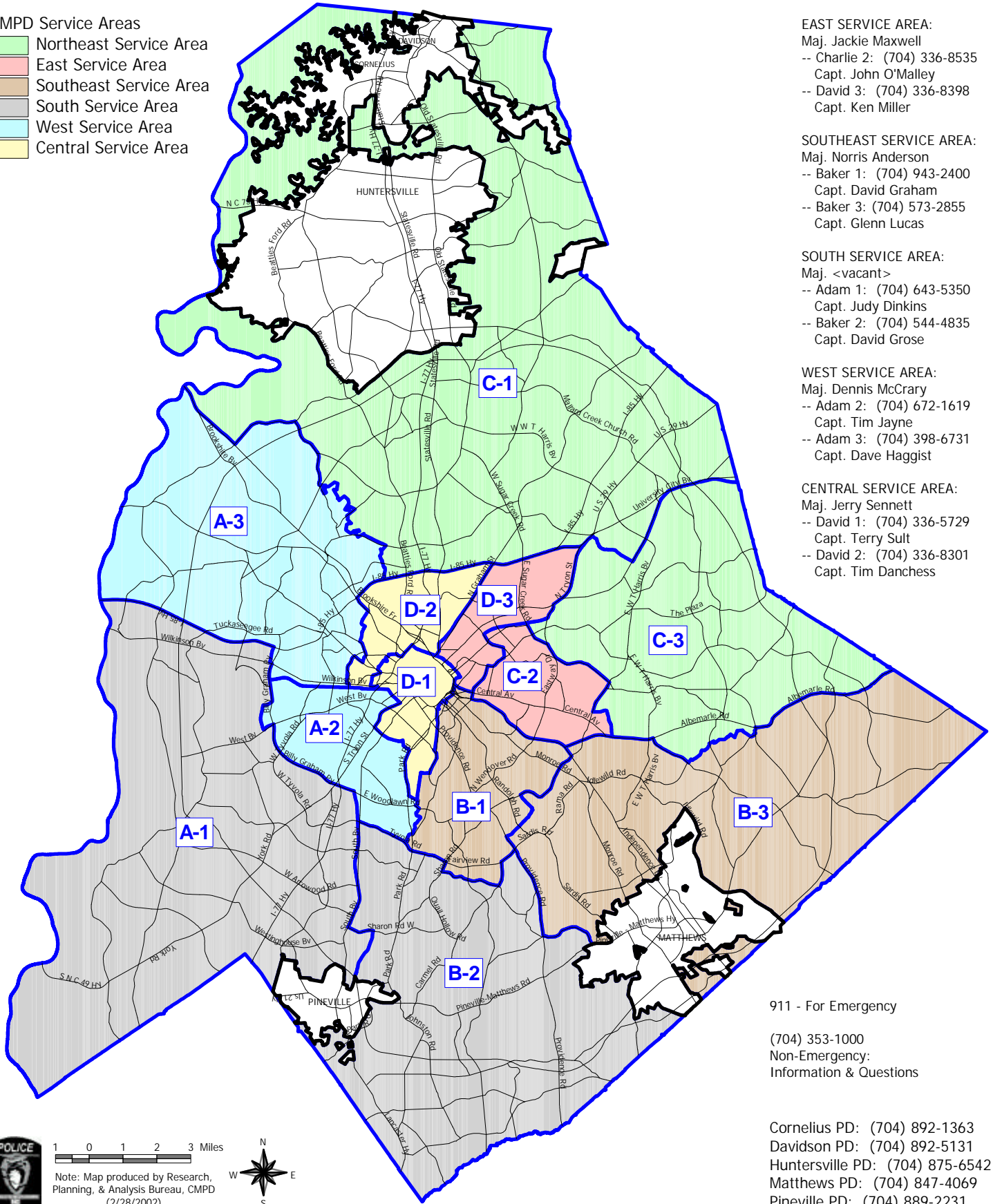
Property Index Offense Clearance Rates
Charlotte-Mecklenburg Police Department: 2001



Cleared case totals include cases cleared by arrest and by exception.

Charlotte-Mecklenburg Police Department Patrol Districts

- CMPD Service Areas**
- Northeast Service Area
 - East Service Area
 - Southeast Service Area
 - South Service Area
 - West Service Area
 - Central Service Area



NORTHEAST SERVICE AREA:
 Maj. Piper Charles
 -- Charlie 1: (704) 593-1340
 Capt. Chuck Johnson
 -- Charlie 3: (704) 567-9198
 Capt. Russ McElwee

EAST SERVICE AREA:
 Maj. Jackie Maxwell
 -- Charlie 2: (704) 336-8535
 Capt. John O'Malley
 -- David 3: (704) 336-8398
 Capt. Ken Miller

SOUTHEAST SERVICE AREA:
 Maj. Norris Anderson
 -- Baker 1: (704) 943-2400
 Capt. David Graham
 -- Baker 3: (704) 573-2855
 Capt. Glenn Lucas

SOUTH SERVICE AREA:
 Maj. <vacant>
 -- Adam 1: (704) 643-5350
 Capt. Judy Dinkins
 -- Baker 2: (704) 544-4835
 Capt. David Grose

WEST SERVICE AREA:
 Maj. Dennis McCrary
 -- Adam 2: (704) 672-1619
 Capt. Tim Jayne
 -- Adam 3: (704) 398-6731
 Capt. Dave Haggist

CENTRAL SERVICE AREA:
 Maj. Jerry Sennett
 -- David 1: (704) 336-5729
 Capt. Terry Sult
 -- David 2: (704) 336-8301
 Capt. Tim Danchess

911 - For Emergency

(704) 353-1000
 Non-Emergency:
 Information & Questions

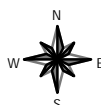
Cornelius PD: (704) 892-1363
 Davidson PD: (704) 892-5131
 Huntersville PD: (704) 875-6542
 Matthews PD: (704) 847-4069
 Pineville PD: (704) 889-2231



1 0 1 2 3 Miles

Note: Map produced by Research, Planning, & Analysis Bureau, CMPD (2/28/2002).

CMPD's Home Page - <http://www.cmpd.org>



Index Offenses Reported by District and Service Area of Occurrence									
West Service Area: 2000-2001									
This data is based on the district configuration adopted Nov. 8, 2000.									
INDEX CATEGORIES	Adam 2			Adam 3			West Service Area		
	2000	2001	% Change	2000	2001	% Change	2000	2001	% Change
MURDER & NON-NEGLIGENT MANSLAUGHTER	8	8	0.0%	10	11	10.0%	18	19	5.6%
RAPE	34	29	-14.7%	37	25	-32.4%	71	54	-23.9%
ACTUAL	30	28	-6.7%	33	20	-39.4%	63	48	-23.8%
ATTEMPTED	4	1	-75.0%	4	5	25.0%	8	6	-25.0%
ROBBERY	292	295	1.0%	255	302	18.4%	547	597	9.1%
ARMED	227	234	3.1%	198	249	25.8%	425	483	13.6%
STRONG-ARM	57	61	7.0%	57	59	3.5%	114	120	5.3%
AGGRAVATED ASSAULT	477	481	0.8%	437	387	-11.4%	914	868	-5.0%
BURGLARY	659	725	10.0%	1332	1290	-3.2%	1991	2015	1.2%
RESIDENTIAL	463	417	-9.9%	898	785	-12.6%	1361	1202	-11.7%
COMMERCIAL	194	310	59.8%	434	505	16.4%	628	815	29.8%
LARCENY	1684	1617	-4.0%	2611	2438	-6.6%	4295	4055	-5.6%
FROM AUTO	727	671	-7.7%	1037	968	-6.7%	1764	1639	-7.1%
BICYCLE	15	15	0.0%	27	15	-44.4%	42	30	-28.6%
SHOPLIFTING	139	185	33.1%	357	302	-15.4%	496	487	-1.8%
OTHERS	803	746	-7.1%	1190	1162	-2.4%	1993	1908	-4.3%
VEHICLE THEFT	313	414	32.3%	435	450	3.4%	748	864	15.5%
ARSON	15	22	46.7%	28	33	17.9%	43	55	27.9%
TOTALS	3482	3591	3.1%	5145	4936	-4.1%	8627	8527	-1.2%
VIOLENT	811	813	0.2%	739	725	-1.9%	1550	1538	-0.8%
PROPERTY	2671	2778	4.0%	4406	4211	-4.4%	7077	6989	-1.2%

Index Offenses Reported by District and Service Area of Occurrence									
Southeast Service Area: 2000-2001									
This data is based on the district configuration adopted Nov. 8, 2000.									
INDEX CATEGORIES	Baker 1			Baker 3			Southeast Service Area		
	2000	2001	% Change	2000	2001	% Change	2000	2001	% Change
MURDER & NON-NEGLIGENT MANSLAUGHTER	3	5	66.7%	4	4	0.0%	7	9	28.6%
RAPE	14	19	35.7%	28	26	-7.1%	42	45	7.1%
ACTUAL	14	19	35.7%	24	23	-4.2%	38	42	10.5%
ATTEMPTED	0	0	NA	4	3	-25.0%	4	3	-25.0%
ROBBERY	148	192	29.7%	183	222	21.3%	331	414	25.1%
ARMED	104	134	28.8%	145	180	24.1%	249	314	26.1%
STRONG-ARM	44	58	31.8%	38	42	10.5%	82	100	22.0%
AGGRAVATED ASSAULT	288	219	-24.0%	266	299	12.4%	554	518	-6.5%
BURGLARY	804	839	4.4%	835	926	10.9%	1639	1765	7.7%
RESIDENTIAL	508	447	-12.0%	590	630	6.8%	1098	1077	-1.9%
COMMERCIAL	296	392	32.4%	245	296	20.8%	541	688	27.2%
LARCENY	2509	2373	-5.4%	2864	2722	-5.0%	5373	5095	-5.2%
FROM AUTO	1052	935	-11.1%	1468	1279	-12.9%	2520	2214	-12.1%
BICYCLE	20	21	5.0%	28	14	-50.0%	48	35	-27.1%
SHOPLIFTING	392	446	13.8%	286	344	20.3%	678	790	16.5%
OTHERS	1045	971	-7.1%	1062	1085	2.2%	2107	2056	-2.4%
VEHICLE THEFT	244	234	-4.1%	478	335	-29.9%	722	569	-21.2%
ARSON	19	18	-5.3%	27	31	14.8%	46	49	6.5%
TOTALS	4029	3899	-3.2%	4687	4565	-2.6%	8716	8464	-2.9%
VIOLENT	453	435	-4.0%	483	551	14.1%	936	986	5.3%
PROPERTY	3576	3464	-3.1%	4204	4014	-4.5%	7780	7478	-3.9%

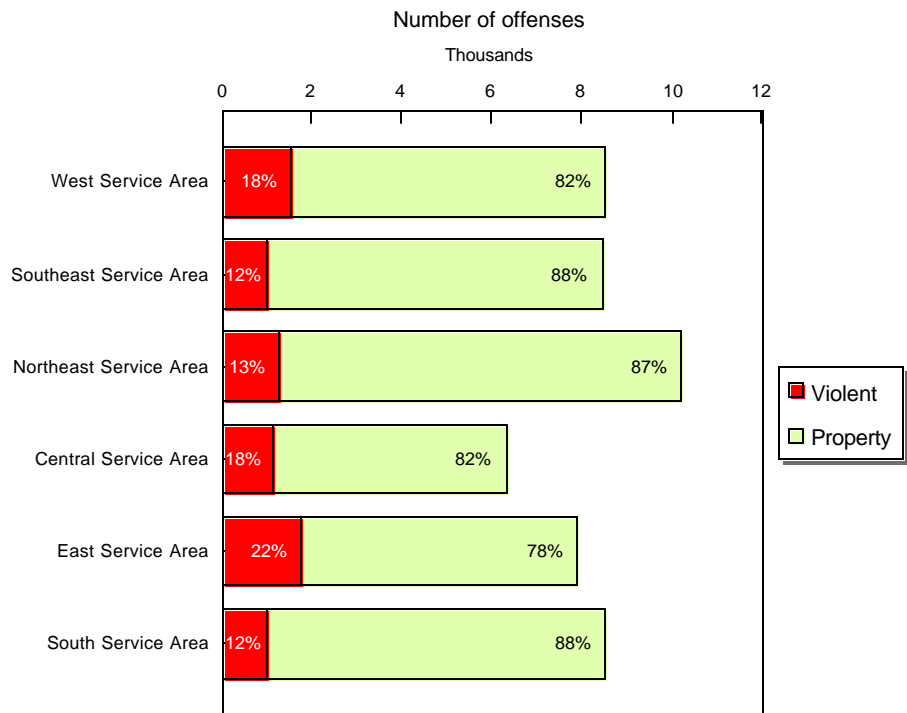
Index Offenses Reported by District and Service Area of Occurrence									
Northeast Service Area: 2000 - 2001									
This data is based on the district configuration adopted Nov. 8, 2000.									
INDEX CATEGORIES	Charlie 1			Charlie 3			Northeast Service Area		
	2000	2001	% Change	2000	2001	% Change	2000	2001	% Change
MURDER & NON-NEGLIGENT MANSLAUGHTER	3	2	-33.3%	8	7	-12.5%	11	9	-18.2%
RAPE	22	27	22.7%	27	27	0.0%	49	54	10.2%
ACTUAL	20	27	35.0%	23	25	8.7%	43	52	20.9%
ATTEMPTED	2	0	-100.0%	4	2	-50.0%	6	2	-66.7%
ROBBERY	178	262	47.2%	239	235	-1.7%	417	497	19.2%
ARMED	138	189	37.0%	184	193	4.9%	322	382	18.6%
STRONG-ARM	40	73	82.5%	55	42	-23.6%	95	115	21.1%
AGGRAVATED ASSAULT	349	346	-0.9%	330	381	15.5%	679	727	7.1%
BURGLARY	1051	1118	6.4%	933	997	6.9%	1984	2115	6.6%
RESIDENTIAL	718	712	-0.8%	696	697	0.1%	1414	1409	-0.4%
COMMERCIAL	333	406	21.9%	237	300	26.6%	570	706	23.9%
LARCENY	3225	3857	19.6%	2180	1991	-8.7%	5405	5848	8.2%
FROM AUTO	1375	1799	30.8%	1080	966	-10.6%	2455	2765	12.6%
BICYCLE	22	17	-22.7%	24	23	-4.2%	46	40	-13.0%
SHOPLIFTING	342	434	26.9%	192	167	-13.0%	534	601	12.5%
OTHERS	1486	1607	8.1%	884	835	-5.5%	2370	2442	3.0%
VEHICLE THEFT	348	468	34.5%	496	441	-11.1%	844	909	7.7%
ARSON	32	34	6.3%	33	25	-24.2%	65	59	-9.2%
TOTALS	5208	6114	17.4%	4245	4104	-3.3%	9453	10218	8.1%
VIOLENT	552	637	15.4%	603	650	7.8%	1155	1287	11.4%
PROPERTY	4656	5477	17.6%	3642	3454	-5.2%	8298	8931	7.6%

Index Offenses Reported by District and Service Area of Occurrence									
Central Service Area: 2000 - 2001									
This data is based on the district configuration adopted Nov. 8, 2000.									
INDEX CATEGORIES	David 1			David 2			Central Service Area		
	2000	2001	% Change	2000	2001	% Change	2000	2001	% Change
MURDER & NON-NEGLIGENT MANSLAUGHTER	2	1	-50.0%	6	5	-16.7%	8	6	-25.0%
RAPE	15	15	0.0%	38	25	-34.2%	53	40	-24.5%
ACTUAL	15	15	0.0%	36	22	-38.9%	51	37	-27.5%
ATTEMPTED	0	0	NA	2	3	50.0%	2	3	50.0%
ROBBERY	141	127	-9.9%	211	238	12.8%	352	365	3.7%
ARMED	94	76	-19.1%	176	198	12.5%	270	274	1.5%
STRONG-ARM	47	51	8.5%	35	40	14.3%	82	91	11.0%
AGGRAVATED ASSAULT	183	185	1.1%	668	555	-16.9%	851	740	-13.0%
BURGLARY	409	497	21.5%	683	686	0.4%	1092	1183	8.3%
RESIDENTIAL	168	149	-11.3%	505	493	-2.4%	673	642	-4.6%
COMMERCIAL	241	348	44.4%	178	193	8.4%	419	541	29.1%
LARCENY	2350	2201	-6.3%	1226	1189	-3.0%	3576	3390	-5.2%
FROM AUTO	1125	912	-18.9%	645	507	-21.4%	1770	1419	-19.8%
BICYCLE	14	10	-28.6%	10	9	-10.0%	24	19	-20.8%
SHOPLIFTING	101	115	13.9%	57	113	98.2%	158	228	44.3%
OTHERS	1110	1164	4.9%	514	560	8.9%	1624	1724	6.2%
VEHICLE THEFT	266	232	-12.8%	352	326	-7.4%	618	558	-9.7%
ARSON	6	9	50.0%	35	24	-31.4%	41	33	-19.5%
TOTALS	3372	3267	-3.1%	3219	3048	-5.3%	6591	6315	-4.2%
VIOLENT	341	328	-3.8%	923	823	-10.8%	1264	1151	-8.9%
PROPERTY	3031	2939	-3.0%	2296	2225	-3.1%	5327	5164	-3.1%

Index Offenses Reported by District and Service Area of Occurrence									
East Service Area: 2000 - 2001									
This data is based on the district configuration adopted Nov. 8, 2000.									
INDEX CATEGORIES	Charlie 2			David 3			East Service Area		
	2000	2001	% Change	2000	2001	% Change	2000	2001	% Change
MURDER & NON-NEGLIGENT MANSLAUGHTER	13	7	-46.2%	6	11	83.3%	19	18	-5.3%
RAPE	32	31	-3.1%	18	20	11.1%	50	51	2.0%
ACTUAL	31	27	-12.9%	18	20	11.1%	49	47	-4.1%
ATTEMPTED	1	4	300.0%	0	0	NA	1	4	300.0%
ROBBERY	296	346	16.9%	320	380	18.8%	616	726	17.9%
ARMED	217	267	23.0%	233	306	31.3%	450	573	27.3%
STRONG-ARM	79	79	0.0%	86	74	-14.0%	165	153	-7.3%
AGGRAVATED ASSAULT	396	389	-1.8%	576	591	2.6%	972	980	0.8%
	0	0		0	0				
BURGLARY	736	806	9.5%	672	689	2.5%	1408	1495	6.2%
RESIDENTIAL	534	620	16.1%	433	402	-7.2%	967	1022	5.7%
COMMERCIAL	202	196	-3.0%	215	287	33.5%	417	483	15.8%
LARCENY	2405	2269	-5.7%	1437	1497	4.2%	3842	3766	-2.0%
FROM AUTO	905	762	-15.8%	733	750	2.3%	1638	1512	-7.7%
BICYCLE	21	16	-23.8%	15	10	-33.3%	36	26	-27.8%
SHOPLIFTING	542	696	28.4%	88	110	25.0%	630	806	27.9%
OTHERS	937	795	-15.2%	601	627	4.3%	1538	1422	-7.5%
VEHICLE THEFT	450	392	-12.9%	486	424	-12.8%	936	816	-12.8%
ARSON	19	30	57.9%	34	17	-50.0%	53	47	-11.3%
TOTALS	4347	4270	-1.8%	3549	3629	2.3%	7896	7899	0.0%
VIOLENT	737	773	4.9%	920	1002	8.9%	1657	1775	7.1%
PROPERTY	3610	3497	-3.1%	2629	2627	-0.1%	6239	6124	-1.8%

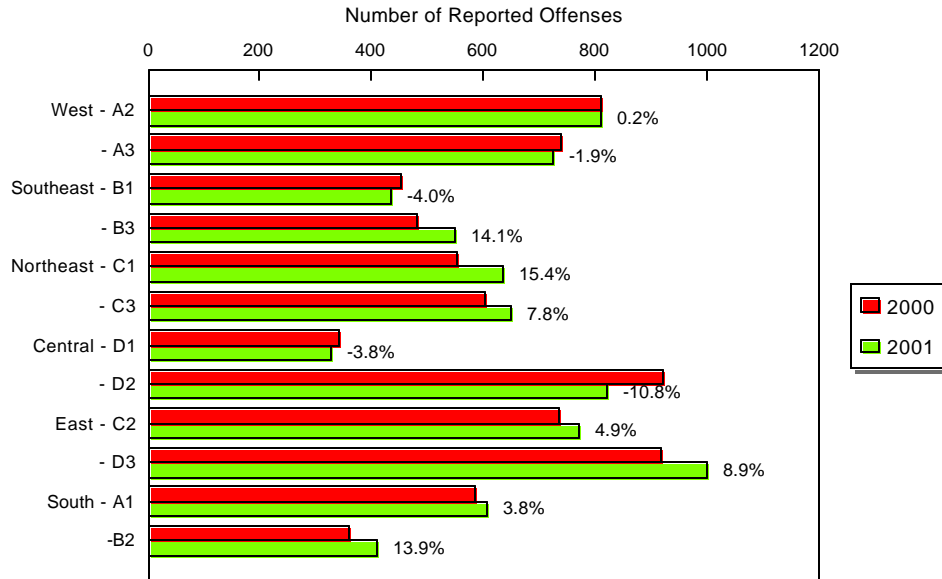
Index Offenses Reported by District and Service Area of Occurrence									
South Service Area: 2000 - 2001									
This data is based on the district configuration adopted Nov. 8, 2000.									
INDEX CATEGORIES	Adam 1			Baker 2			South Service Area		
	2000	2001	% Change	2000	2001	% Change	2000	2001	% Change
MURDER & NON-NEGLIGENT MANSLAUGHTER	10	4	-60.0%	2	1	-50.0%	12	5	-58.3%
RAPE	24	24	0.0%	15	22	46.7%	39	46	17.9%
ACTUAL	20	22	10.0%	12	20	66.7%	32	42	31.3%
ATTEMPTED	5	2	-60.0%	3	2	-33.3%	8	4	-50.0%
ROBBERY	252	240	-4.8%	135	153	13.3%	387	393	1.6%
ARMED	196	196	0.0%	110	113	2.7%	306	309	1.0%
STRONG-ARM	56	43	-23.2%	25	40	60.0%	81	83	2.5%
AGGRAVATED ASSAULT	299	339	13.4%	208	234	12.5%	507	573	13.0%
BURGLARY	664	776	16.9%	812	907	11.7%	1476	1683	14.0%
RESIDENTIAL	396	417	5.3%	605	639	5.6%	1001	1056	5.5%
COMMERCIAL	268	359	34.0%	207	277	33.8%	475	636	33.9%
LARCENY	2936	2757	-6.1%	2319	2320	0.0%	5255	5077	-3.4%
FROM AUTO	1220	1167	-4.3%	1071	1225	14.4%	2291	2392	4.4%
BICYCLE	24	9	-62.5%	32	15	-53.1%	56	24	-57.1%
SHOPLIFTING	343	409	19.2%	190	158	-16.8%	533	567	6.4%
OTHERS	1349	1172	-13.1%	1026	922	-10.1%	2375	2094	-11.8%
VEHICLE THEFT	420	407	-3.1%	265	275	3.8%	685	682	-0.4%
ARSON	34	49	44.1%	31	24	-22.6%	65	73	12.3%
TOTALS	4639	4596	-0.9%	3787	3936	3.9%	8426	8532	1.3%
VIOLENT	585	607	3.8%	360	410	13.9%	945	1017	7.6%
PROPERTY	4054	3989	-1.6%	3427	3526	2.9%	7481	7515	0.5%

**Reported Index Offenses in 2001
Breakdown of Violent vs. Property Offenses by Service Area**

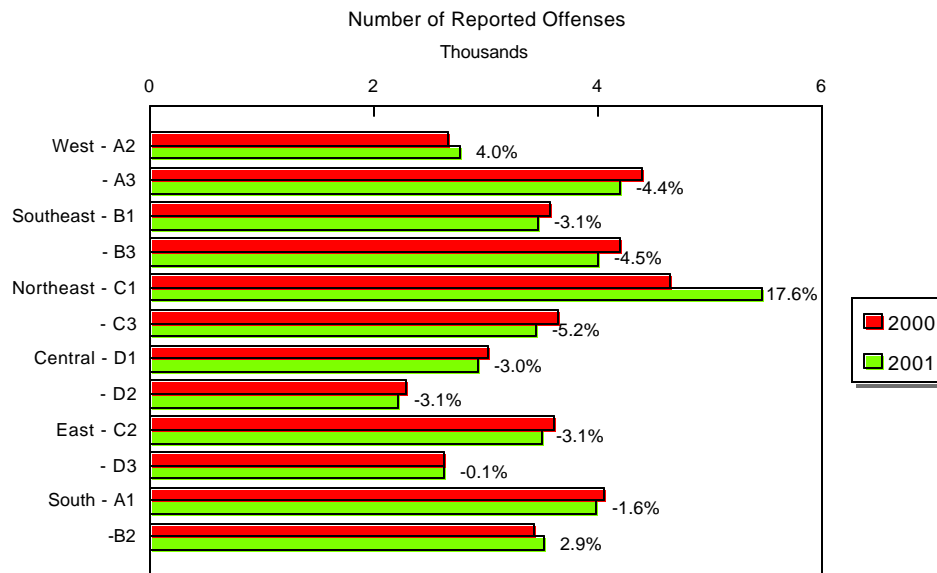


Violent Index includes homicide, rape, robbery, and aggravated assault.
Property Index includes burglary, larceny, vehicle theft, and arson.

Violent Index Offenses Reported by District Charlotte-Mecklenburg Police Department: 2000-2001



Property Index Offenses Reported by District Charlotte-Mecklenburg Police Department: 2000-2001



PART 2 AND OTHER OFFENSES REPORTED BY THE CHARLOTTE-MECKLENBURG POLICE DEPARTMENT 2000 - 2001							
CRIME CATEGORIES	Number of Offenses:			*	Rate per Estimated 100,000 Pop.:		
	2000	2001	% Change		2000	2001	% Change
				*			
NON-AGGRAVATED ASSAULT	10248	10391	1.4%	*	1637.6	1602.7	-2.1%
FORGERY/COUNTERFEIT	636	722	13.5%	*	101.6	111.4	9.6%
FRAUD	2103	1625	-22.7%	*	336.0	250.6	-25.4%
EMBEZZLEMENT	781	660	-15.5%	*	124.8	101.8	-18.4%
VANDALISM/DAMAGE TO PROPERTY	8639	7887	-8.7%	*	1380.5	1216.5	-11.9%
SEX OFFENSES	543	596	9.8%	*	86.8	91.9	5.9%
OFFENSES AGAINST THE FAMILY	258	176	-31.8%	*	41.2	27.1	-34.2%
OTHER PART 2 OFFENSES*	5717	5390	-5.7%	*	913.5	831.4	-9.0%
				*			
PART 2 EXCLUDING HIT & RUN	28925	27447	-5.1%	*	4622.0	4233.4	-8.4%
				*			
HIT AND RUN OFFENSES	5952	5792	-2.7%	*	951.1	893.4	-6.1%
				*			
TOTAL PART 2 (INCLUDING HIT & RUN)	34877	33239	-4.7%	*	5573.1	5126.8	-8.0%

NOTE: Rates per population for 2000 have been adjusted based on the 2000 Census data released in 2001.

NON-CRIMINAL INCIDENTS REPORTED BY THE CHARLOTTE-MECKLENBURG POLICE DEPARTMENT 2000-2001							
TYPE OF INCIDENT	Number of Reports:			*	Rate per Estimated 100,000 Pop.:		
	2000	2001	% Change		2000	2001	% Change
				*			
MISSING PERSONS (16 & OLDER)	1334	1357	1.7%	*	213.2	209.3	-1.8%
MISSING PERSONS (UNDER 16)	1383	1346	-2.7%	*	221.0	207.6	-6.1%
SUICIDE	362	405	11.9%	*	57.8	62.5	8.0%
SUDDEN OR ACCIDENTAL DEATH*	466	452	-3.0%	*	74.5	69.7	-6.4%
LOST OR MISSING PROPERTY	482	314	-34.9%	*	77.0	48.4	-37.1%
OTHER INCIDENTS*	908	1209	33.1%	*	145.1	186.5	28.5%
				*			
TOTAL*	4935	5083	3.0%	*	788.6	784.0	-0.6%

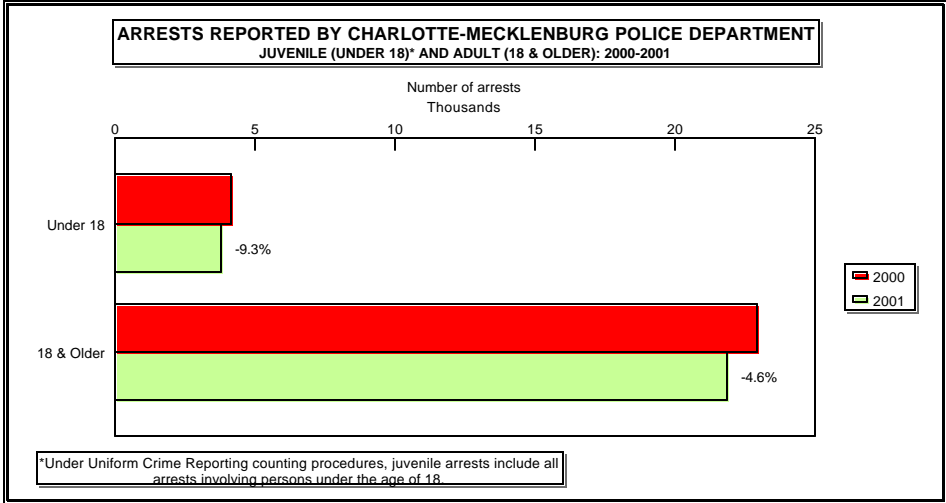
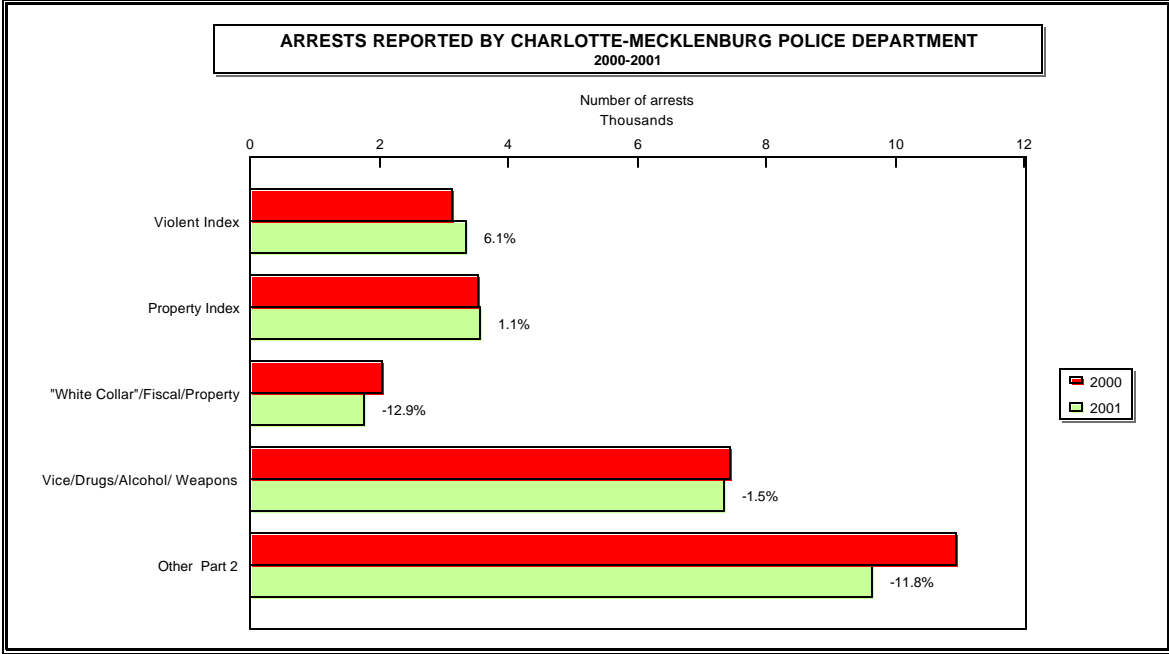
NOTE: Rates per population for 2000 have been adjusted based on the 2000 Census data released in 2001.

*Does not include traffic fatalities or other traffic collision reports.

**ARRESTS REPORTED BY CHARLOTTE-MECKLENBURG POLICE DEPARTMENT
2000-2001**

CRIME CATEGORY	ADULTS: AGE 18 & OLDER			*	JUVENILES: AGE UNDER 18			*	TOTAL ARRESTS		
	2000	2001	% CHANGE		2000	2001	% CHANGE		2000	2001	% CHANGE
MURDER & NON-NEGL. MANSLAUGHTER	58	55	-5.2%	*	7	9	28.6%	*	65	64	-1.5%
RAPE	38	19	-50.0%	*	5	1	-80.0%	*	43	20	-53.5%
ROBBERY	267	336	25.8%	*	104	97	-6.7%	*	371	433	16.7%
AGGRAVATED ASSAULT	2379	2539	6.7%	*	275	268	-2.5%	*	2654	2807	5.8%
VIOLENT INDEX	2742	2949	7.5%	*	391	375	-4.1%	*	3133	3324	6.1%
BURGLARY	470	451	-4.0%	*	217	178	-18.0%	*	687	629	-8.4%
LARCENY	1663	1858	11.7%	*	760	763	0.4%	*	2423	2621	8.2%
VEHICLE THEFT	196	131	-33.2%	*	171	147	-14.0%	*	367	278	-24.3%
ARSON	10	14	40.0%	*	37	21	-43.2%	*	47	35	-25.5%
PROPERTY INDEX	2339	2454	4.9%	*	1185	1109	-6.4%	*	3524	3563	1.1%
TOTAL INDEX	5081	5403	6.3%	*	1576	1484	-5.8%	*	6657	6887	3.5%
NEGLIGENT & VEHICULAR MANSLAUGHTER	5	2	-60.0%	*	0	0	ERR	*	5	2	-60.0%
NON-AGGRAVATED ASSAULT	1942	1731	-10.9%	*	710	735	3.5%	*	2652	2466	-7.0%
FORGERY & COUNTERFIET	220	180	-18.2%	*	5	3	-40.0%	*	225	183	-18.7%
FRAUD	836	782	-6.5%	*	22	7	-68.2%	*	858	789	-8.0%
EMBEZZLEMENT	185	139	-24.9%	*	27	18	-33.3%	*	212	157	-25.9%
STOLEN PROPERTY	621	520	-16.3%	*	108	114	5.6%	*	729	634	-13.0%
VANDALISM	298	248	-16.8%	*	156	156	0.0%	*	454	404	-11.0%
CONCEALED WEAPONS	525	547	4.2%	*	72	49	-31.9%	*	597	596	-0.2%
PROSTITUTION/VICE	282	344	22.0%	*	2	3	50.0%	*	284	347	22.2%
SEX OFFENSES	285	257	-9.8%	*	39	36	-7.7%	*	324	293	-9.6%
DRUGS	3483	3262	-6.3%	*	399	291	-27.1%	*	3882	3553	-8.5%
GAMBLING	14	3	-78.6%	*	0	0	ERR	*	14	3	-78.6%
OFFENSES AGAINST THE FAMILY	133	170	27.8%	*	1	0	-100.0%	*	134	170	26.9%
DRIVING WHILE ALCOHOL/DRUG IMPAIRED	2241	2556	14.1%	*	17	16	-5.9%	*	2258	2572	13.9%
LIQUOR VIOLATION	386	233	-39.6%	*	14	22	57.1%	*	400	255	-36.3%
DISORDERLY CONDUCT/AFFRAY	524	522	-0.4%	*	198	194	-2.0%	*	722	716	-0.8%
OTHER ARRESTS (NON-TRAFFIC)	5844	4955	-15.2%	*	800	634	-20.8%	*	6644	5589	-15.9%
PART 2 TOTAL	17824	16451	-7.7%	*	2570	2278	-11.4%	*	20394	18729	-8.2%
TOTAL ARRESTS	22905	21854	-4.6%	*	4146	3762	-9.3%	*	27051	25616	-5.3%

NOTE: An arrest can have multiple charges for different state, federal, or local statutes and ordinances. For counting purposes, each arrest is classified by the highest type of charge on the hierarchy of crimes under Uniform Crime Reporting. The totals in this chart reflect the number of arrests, not the number of charges on each arrest. Totals reflect only those arrests made by officers in the C-MPD. Arrests made by other agencies (Sherriff's Dept., Highway Patrol, etc.) on C-MPD warrants are not included.



**CALL FOR SERVICE RECORDS* LOGGED BY COMMUNICATIONS SECTION BY TYPE
CHARLOTTE-MECKLENBURG POLICE DEPARTMENT: 2001**

10-CODE	TYPE OF CALL	NUMBER OF RECORDS
13	Child abuse/neglect	380
15	Larceny from auto	7872
19	Animal control incident	168
30	Vehicle recovery	2980
31	Pick up property/evidence	4291
32	Fireworks	1730
34	Fraud/Forgery	3534
35	Zone check	4811
37	Loitering/Trespassing	7443
38	911 Hang-up	147523
39	Crime Scene Search needed	9937
40	Fight	4645
43	Chase	14
44	Riot/Protest/Civil Disorder	19
45	Bomb threat	368
46	Alarm-Residential	36340
47	Alarm-Commercial	28814
48	Alarm from vehicle	307
49	Lake Enforcement activity	152
50	Accident-property damage	47567
52	Accident with injuries	8772
53	Road obstruction	3297
54	Hit and Run	8711
55	Intoxicated driver	3725
56	Intoxicated person	3644
57	Noise disturbance/violation	14690
58	Direct traffic	1469
59	Escort	429
60	Suspicious vehicle	18325
61	Kidnapping/abduction	206
62	Breaking/Entering from residence	12286
63	No other code/unable to determine	18938
64	Breaking/Entering from business	4415
65	Armed robbery from business	889
66	Armed robbery from person	2430
67	Deceased person	404
68	Miscellaneous vice activities	1426
69	Attempted or reported suicide	1406
70	Parking problem	3735
71	Check welfare/attempt to locate	7531
72	Transport prisoner	4015
73	Mental patient/papers	2293
75	Drug related	10047
76	Prowler	2272
77	Assist other agency	8083
79	Injured person/industrial accident	2071
80	Fire/arson report	527
81	Code at the airport	55
82	Meet complainant	12101
83	Missing person	7409
84	Traffic control malfunction	2125
85	Damage to property	8414
86	Larceny	24302
87	Larceny of auto/unlawful use	7599
88	Suspicious/questionable person	24140
89	Careless/reckless driver/drag racing	2886
90	Assault - no weapon involved	15326
91	Domestic problem	34465
92	Assault with weapon	1718
93	Verbal confrontation	30244
94	Shots fired/armed subject	11996
95	Rape/sexual assault	847
96	Disabled vehicle	15540
97	Animal problem	2190
98	School violation including truancy	1157
99	Serve warrant/warrant on file	8996
	TOTAL CALL RECORDS	666441

*This chart contains summary counts of the non-administrative call records entered by Communications. It includes not only calls to which officers were assigned, officer-initiated calls, and calls handled by NEPS, but also Crime Scene Search assignments, calls that were later cancelled, multiple calls on the same event, hang-ups, etc.

**The 10-code is a situation code generally assigned by the 911 telecommunicator and it generally reflects what was known at the time of entry or dispatch. Because 10-codes and their corresponding call types have been modified during the past year in preparation for the new dispatching system, a direct comparison by call type with the previous year is not available.

**CALLS FOR SERVICE REQUIRING RESPONSE BY POLICE*
CHARLOTTE-MECKLENBURG POLICE DEPARTMENT: 2001**

10-CODE	TYPE OF CALL	NUMBER OF CALLS
13	Child abuse/neglect	280
15	Larceny from auto	7283
19	Animal control incident	163
30	Vehicle recovery	2750
31	Pick up property/evidence	3892
32	Fireworks	1033
34	Fraud/Forgery	3087
35	Zone check	4512
37	Loitering/Trespassing	6367
38	911 Hang-up	12019
39	Crime Scene Search needed	9293
40	Fight	3285
43	Chase	12
44	Riot/Protest/Civil Disorder	15
45	Bomb threat	309
46	Alarm-Residential	30941
47	Alarm-Commercial	23621
48	Alarm from vehicle	243
49	Lake Enforcement activity	122
50	Accident-property damage	34091
52	Accident with injuries	5563
53	Road obstruction	2566
54	Hit and Run	7627
55	Intoxicated driver	3498
56	Intoxicated person	3074
57	Noise disturbance/violation	12589
58	Direct traffic	1224
59	Escort	204
60	Suspicious vehicle	16408
61	Kidnapping/abduction	176
62	Breaking/Entering from residence	11231
63	No other code/unable to determine	14116
64	Breaking/Entering from business	4181
65	Armed robbery from business	748
66	Armed robbery from person	2181
67	Deceased person	347
68	Miscellaneous vice activities	1233
69	Attempted or reported suicide	1233
70	Parking problem	3425
71	Check welfare/attempt to locate	6652
72	Transport prisoner	3696
73	Mental patient/papers	1830
75	Drug related	8657
76	Prowler	1962
77	Assist other agency	6434
79	Injured person/industrial accident	1685
80	Fire/arsion report	456
81	Code at the airport	28
82	Meet complainant	10462
83	Missing person	6447
84	Traffic control malfunction	1210
85	Damage to property	7749
86	Larceny	22410
87	Larceny of auto/unlawful use	6808
88	Suspicious/questionable person	21349
89	Careless/reckless driver/drag racing	2398
90	Assault - no weapon involved	13248
91	Domestic problem	28907
92	Assault with weapon	1378
93	Verbal confrontation	24865
94	Shots fired/armed subject	8602
95	Rape/sexual assault	649
96	Disabled vehicle	13574
97	Animal problem	1519
98	School violation including truancy	1033
99	Serve warrant/warrant on file	8222
	TOTAL CALL RECORDS	447172

*This chart contains the number of incidents in which a call for service required the dispatching of a police officer, a report from the NEPS unit, or some other active response, or which documented a self-assigned activity by an officer. The following types of calls are excluded: 911 hangups where no unit was assigned (cell phones), cancelled alarms/accidents/other incidents where no CMPD unit needed to be assigned and respond, test calls, and duplicate calls on the same incident.

**The 10-code is a situation code usually assigned by the 911 telecommunicator at the time of entry; the call type may be changed by the officer or when a duplicate call is eliminated. Because 10-codes and their corresponding call types have been modified during the past year in preparation for the new dispatching system, a direct comparison by call type with the previous year is not available.

Incident Reports Handled by Non-Emergency Police Services (NEPS) Unit*													
By District Where Offense Occurred: Charlotte-Mecklenburg Police Department: 2001													
District	JAN	FEB	MAR	APR	MAY	JUN	JUL	AUG	SEP	OCT	NOV	DEC	Totals
A1	304	206	237	223	240	272	283	289	266	241	231	221	3013
A2	203	140	165	179	183	202	208	183	185	158	166	152	2124
A3	273	274	233	203	248	278	275	276	249	223	232	194	2958
B1	251	187	230	205	202	214	233	229	212	200	218	215	2596
B2	250	236	282	261	314	269	315	294	268	301	256	269	3315
B3	340	272	385	299	309	315	319	309	248	306	264	245	3611
C1	417	364	357	417	427	465	433	421	354	381	358	394	4788
C2	248	179	205	197	188	210	216	213	175	196	160	166	2353
C3	264	253	238	218	255	263	287	248	217	218	225	212	2898
D1	272	209	220	210	251	213	207	246	218	250	216	174	2686
D2	130	119	146	157	155	150	117	138	122	142	120	123	1619
D3	168	170	174	160	166	182	168	159	151	148	132	177	1955
OTHER	2	3	5	3	3	3	2	7	0	0	3	1	32
Total	3122	2612	2877	2732	2941	3036	3063	3012	2665	2764	2581	2543	33948

Note: Data for this chart is taken from the call for service records in the CAD system.

Other Telephone Call Responses from NEPS Logged by Automatic Call Distribution (ACD) System in 2001	
Calls Passed/Referred to 911 (1&2)	2562
Calls entered in CAD for officer response to scene (3)	11530
Information Calls:	
* Employee Locator/Message (6)	7844
* Case Inquiry about officer assigned to a case (7)	1752
* Street Directions (11)	592
* Other miscellaneous information requests	40847
Transfers to Records Bureau	654
Miscellaneous incident documentation	2260
Supplements to earlier reports	4479
Animal Control inquiries and CAD calls	2328
Zone Checks (8)	1192
Repossessions entered in mainframe (9)	870
Referrals:	
* City/County Customer Service (12)	454
* Eviction - Gun Permits referred to Sheriff's Dept.(13)	1109
Other responses or transfers:	38814

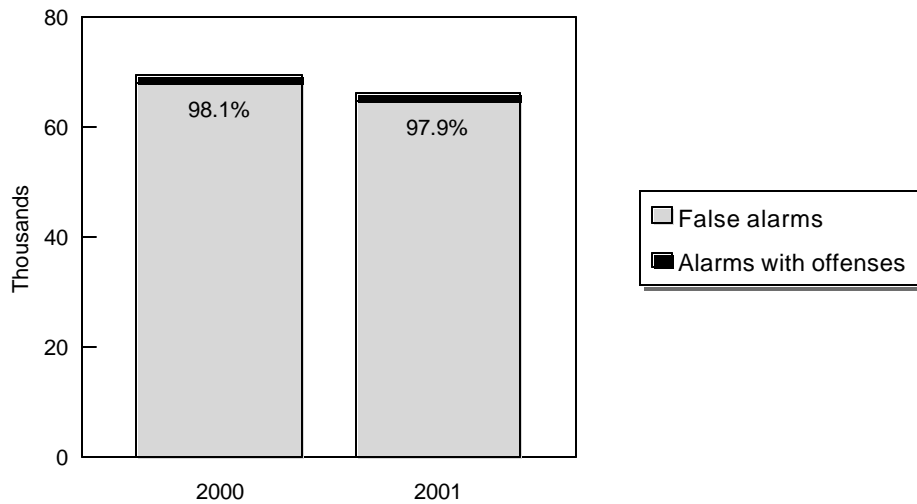
Alarm Permit Registration: Charlotte-Mecklenburg Police Department

Total Number of Active Permits in 2000	94329
Total Number of Active Permits in 2001	101960
% Increase	8.1%

Alarm Calls in 2001:

Total alarm calls received	66121
Total alarm calls cancelled	19304
Total alarm call responses	46817

**Alarm Calls for Service by Outcome
Charlotte-Mecklenburg Police Department: 2000-2001**



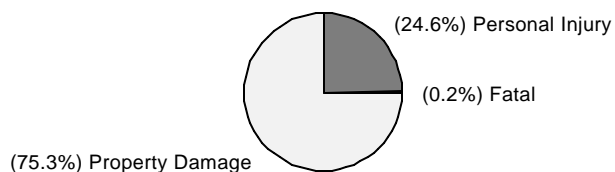
Note: False alarm totals include calls where no offense was found or where the alarm call was cancelled.

**TRAFFIC COLLISION REPORTS
CHARLOTTE-MECKLENBURG POLICE DEPARTMENT
Jan-Dec, 2000-2001**

TYPE	2000	2001	% CHANGE
Fatal Collisions*	89	58	-34.8%
Vehicle Occupants Killed*	72	54	-25.0%
Pedestrians Killed*	19	8	-57.9%
Personal Injury Collisions	9410	8585	-8.8%
Property Damage Collisions	26252	26309	0.2%
TOTAL Collisions	35751	34952	-2.2%

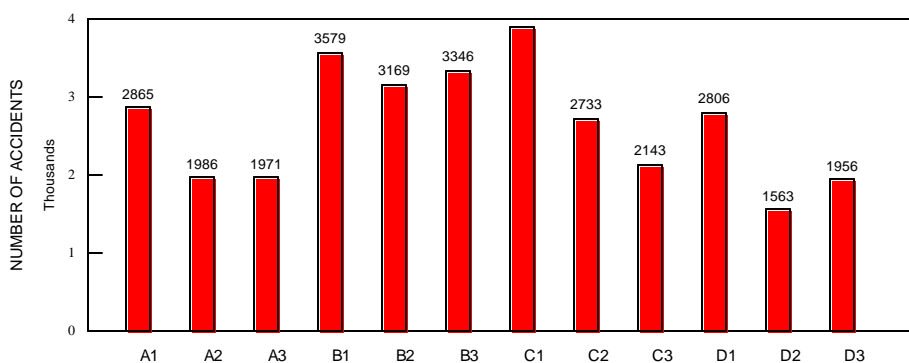
*The number of fatal collisions and the number of persons killed in those accidents is taken from the HITS unit files. Their records are updated for deaths that occur after the initial report is filed. These numbers also include deaths where a medical condition (e.g., heart attack) may later be found to have caused the accident and/or the death involved in the accident. Fatality figures published in earlier reports may not include these two types of cases and are therefore not directly comparable.

**TRAFFIC COLLISIONS REPORTED BY TYPE
CHARLOTTE-MECKLENBURG POLICE DEPARTMENT: 2001**



Includes accidents classed as fatal due to deaths after the initial report; injury and property determinations are based only on the data in the initial report at the time of the accident.

**TRAFFIC COLLISIONS REPORTED BY CHARLOTTE-MECKLENBURG POLICE DEPARTMENT
BY LOCATION OF ACCIDENT (DISTRICT): 2001**



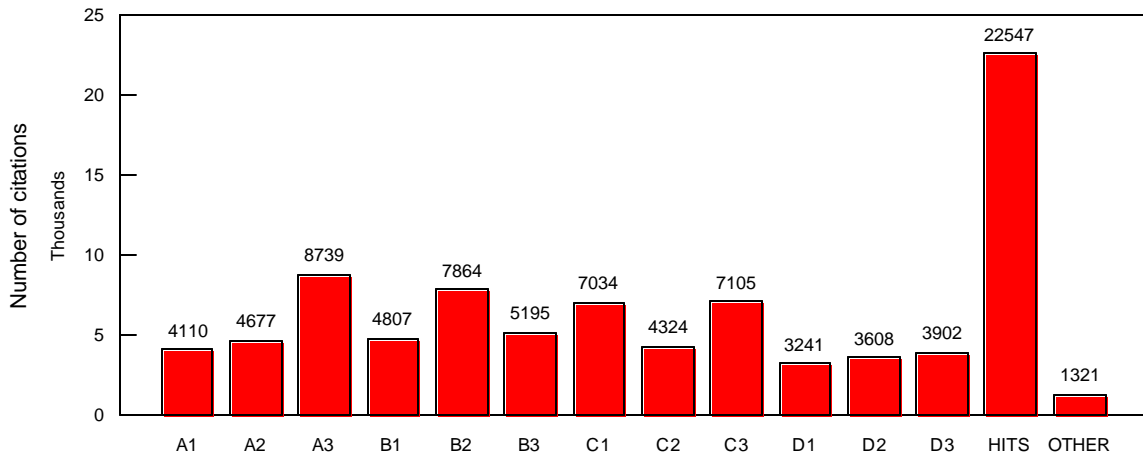
**Based on location of accident in the district configuration adopted on Nov 8, 2000
(Comparative data from 2000 is not currently available under the new district configuration.)**

**CITATIONS ISSUED BY THE CHARLOTTE-MECKLENBURG POLICE DEPARTMENT
2000-2001**

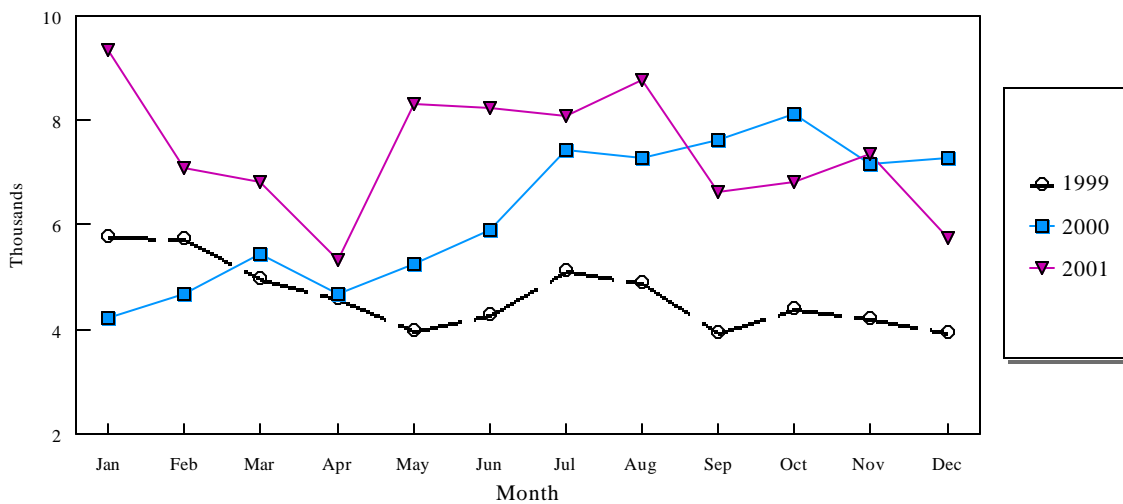
TYPE OF CITATION	2000	2001	% CHANGE
SPEEDING	24112	32758 *	35.9%
IMPROPER TURN	1014	1237 *	22.0%
RED LIGHT	1649	1839 *	11.5%
STOP SIGN	1550	1892 *	22.1%
FAILURE TO YIELD RIGHT-OF-WAY	200	258 *	29.0%
FOLLOWING TOO CLOSE	184	337 *	83.2%
ONE WAY STREET	80	89 *	11.3%
IMPROPER TURN	284	410 *	44.4%
UNSAFE MOVEMENTS	605	669 *	10.6%
RECKLESS DRIVING	665	855 *	28.6%
OTHERS-HAZARDOUS	301	375 *	24.6%
WRONG SIDE OF ROAD	139	129 *	-7.2%
TOTAL HAZARDOUS CITATIONS	30783	40848 *	32.7%
NO DRIVERS LICENSE	8284	9135 *	10.3%
IMPROPER TAGS,NO INS.,EXP.REG	14877	14130 *	-5.0%
DRIVING WHILE LICENSE REVOKED	7748	7396 *	-4.5%
DEFECTIVE EQUIPMENT VIOLATION	56	96 *	71.4%
HIT AND RUN	322	327 *	1.6%
TRUCK ORDINANCE	3	3 *	0.0%
IMPROPER LIGHTS	111	132 *	18.9%
OTHER NON-HAZARDOUS	660	645 *	-2.3%
TOTAL NON-HAZARDOUS CITATIONS	32061	31864 *	-0.6%
SMOKING ORDINANCE-COLISEUM	1	1 *	NA
SMOKING ORDINANCE-OTHER LOCATION	1	2 *	100.0%
NOISE VIOLATION	167	99 *	-40.7%
LITTERING	76	149 *	96.1%
TAXICAB VIOLATIONS	49	30 *	-38.8%
OTHER CITY ORDINANCES	838	752 *	-10.3%
TOTAL CITY ORDINANCE CITATIONS	1132	1033 *	-8.7%
DRIVING WHILE IMPAIRED	2422	3161 *	30.5%
DEATH BY VEHICLE	6	19 *	216.7%
CHILD RESTRAINT	490	783 *	59.8%
FAILURE TO USE SEAT BELT	2808	4936 *	75.8%
SIMPLE ASSAULT	36	52 *	44.4%
WEAPONS VIOLATION	85	77 *	-9.4%
SIMPLE POSSESSION MARIJUANA	1040	1139 *	9.5%
DRUG PARAPHERNALIA	487	537 *	10.3%
LIGUOR LAW VIOLATION	2438	2742 *	12.5%
OTHER STATE STATUTE CITATIONS	1380	1283 *	-7.0%
TOTAL STATE STATUTE CITATIONS	11192	14729 *	31.6%
TOTAL CITATIONS	75168	88474 *	17.7%

*

Citation Enforcement by Issuing Unit
Charlotte-Mecklenburg Police Department: 2001

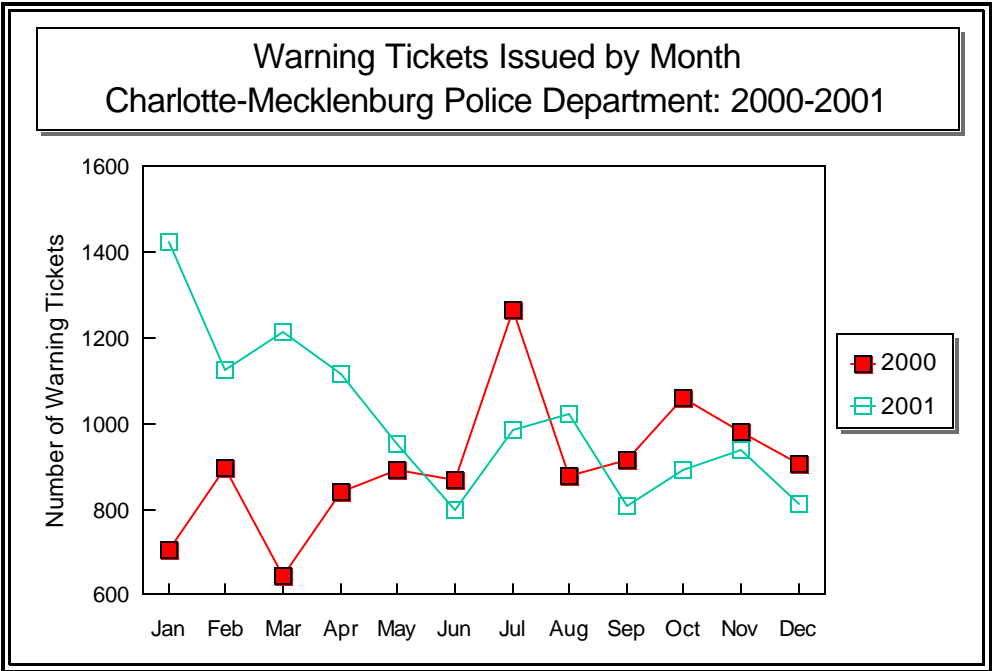


Citation Enforcement by Month
Charlotte-Mecklenburg Police Department: 1999-2001



(includes Hazardous, Non-Hazardous, and City/State Ordinance Citations)

	2000	2001	% Change
Warning Tickets Issued by C-MPD:	10836	12085	11.5%



**Applicants Processed and Hired for Officer Training
Recruitment Section, Charlotte-Mecklenburg Police Department: 2000-2001**

Year: 2001

Race/Gender	Applicants	% of Total	Recruits Hired	% of Total
White Male	497	57%	64	64%
White Female	51	6%	10	10%
African-American Male	208	24%	15	15%
African-American Female	38	4%	2	2%
Latino Male	43	5%	8	8%
Latino Female	6	1%	0	0%
Asian Male	15	2%	0	0%
Asian Female	0	0%	0	0%
Native American Male	6	1%	1	1%
Native American Female	1	0%	0	0%
TOTAL	865		100	

Year: 2000

Race/Gender	Applicants	% of Total	Recruits Hired	% of Total
White Male	536	60%	97	71%
White Female	58	6%	11	8%
African-American Male	179	20%	17	12%
African-American Female	42	5%	2	1%
Latino Male	61	7%	5	4%
Latino Female	2	0%	0	0%
Asian Male	10	1%	4	3%
Asian Female	2	0%	1	1%
Native American Male	6	1%	0	0%
Native American Female	1	0%	0	0%
TOTAL	897		137	

**Charlotte-Mecklenburg Police Training Academy
2001 Training Hours Summary**

Type of Training	Hours
Basic Law Enforcement Training	2749
Mandatory Training	8329
Elective Training	456
Charlotte-Mecklenburg Police Institute	443
Additional Training Initiatives	248
Citizens Academy	46
Technology Training (Elective)	268
Total	12539

**Animal Control Unit Summary: 2001
Charlotte-Mecklenburg Police Department**

Activities:

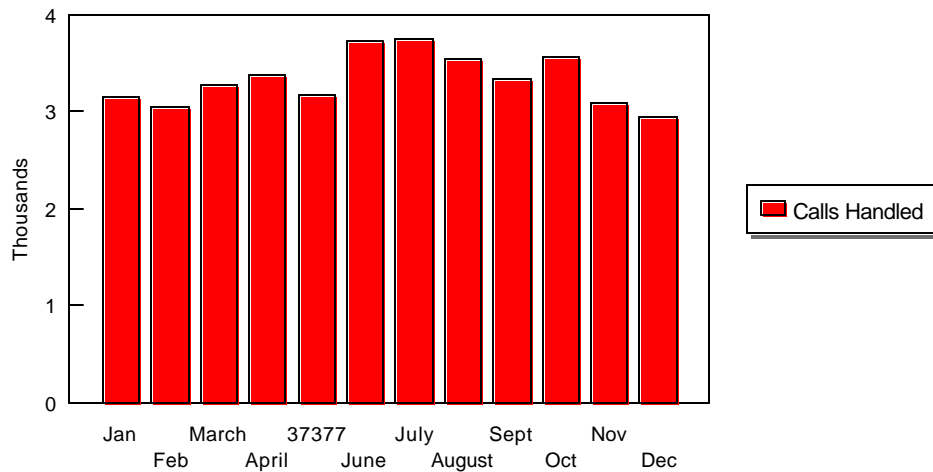
Calls for Service	40019
Citations Issued	2241
Animal License Tags Issued	35295
Animal License Cards Sent Out	74800

Status of Animals:

Total Incoming	21045
Total Outgoing	21075
Total Adopted	2984
Total Reclaimed	2239
Total Euthanized	14942

Animal Control Unit: Calls For Service by Month

Charlotte-Mecklenburg Police Department: 2001



A p p e n d i x

INDEX CRIMES REPORTED TO THE CHARLOTTE POLICE DEPARTMENT (1971-1993) AND CHARLOTTE-MECKLENBURG POLICE (1994-2001)

	CHARLOTTE POLICE DEPARTMENT:																
	1971	1972	1973	1974	1975	1976	1977	1978	1979	1980	1981	1982	1983	1984	1985	1986	
HOMICIDE	54	60	60	60	68	52	46	51	49	60	52	47	44	54	58	58	
RAPE	98	78	67	58	71	84	118	113	116	142	198	197	258	243	226	302	
ROBBERY	573	603	712	1005	822	731	614	709	702	686	773	990	1103	1143	1121	1454	
AGGRAVATED ASSAULT	1246	1172	1032	1121	976	1028	1465	1561	1617	1868	2143	2864	2863	2990	3172	3675	
BURGLARY - RESIDENTIAL	NA	NA	3152	5112	5146	4510	4672	4692	4074	4924	4972	4583	4641	5290	5100	6347	
- COMMERCIAL	NA	NA	2394	3667	3419	2726	2640	2317	2602	3321	3615	4222	3467	3374	3463	3251	
TOTAL BURGLARY	4938	4324	5546	8779	8565	7236	7312	7009	6676	8245	8587	8805	8108	8664	8563	9598	
LARCENY - FROM AUTO	NA	NA	3117	4027	5871	7442	6361	5868	5898	6505	7842	8633	7785	8218	7835	7081	
- BICYCLE	NA	NA	662	1445	1331	1050	1060	1060	947	1156	859	1093	1066	950	857	816	
- SHOPLIFT	NA	NA	1445	1868	1869	1851	1758	1954	2049	2003	2427	3315	3085	3271	3356	3611	
- OTHER	NA	NA	2440	3331	3516	3283	3253	3546	3669	4096	5316	5721	5837	5858	6399	7129	
TOTAL LARCENY	7342	6742	7664	10671	12587	13626	12432	12428	12563	13760	16444	18762	17773	18297	18447	18637	
VEHICLE THEFT	1086	897	1030	1218	1082	898	1006	1246	1263	1444	1449	1320	1337	1375	1502	1659	
TOTAL INDEX WITHOUT ARSON	15337	13876	16111	22912	24171	23655	22993	23117	22986	26205	29646	32985	31486	32766	33089	35383	
ARSON*	*(Arson was not added to the Index until 1980 and prior arson data is not available.)										200	160	190	259	329	268	315
TOTAL INDEX											26405	29806	33175	31745	33095	33357	35698
VIOLENT PROPERTY	1971	1913	1871	2244	1937	1895	2243	2434	2484	2756	3166	4098	4268	4430	4577	5489	
	13366	11963	14240	20668	22234	21760	20750	20683	20502	23449	26640	29077	27477	28665	28780	30209	
YEARLY % CHANGE IN TOTAL INDEX	*(Arson was not added to the Index until 1980 and prior arson data is not available.)										12.9%	11.3%	-4.3%	4.3%	0.8%	7.0%	

INDEX CRIMES REPORTED TO THE CHARLOTTE POLICE DEPARTMENT (1971-1993) AND CHARLOTTE-MECKLENBURG POLICE (1994-2001)

	CHARLOTTE POLICE DEPARTMENT:								CHARLOTTE-MECKLENBURG POLICE DEPARTMENT:							
	1987	1988	1989	1990	1991	1992	1993	*	1994	1995	1996	1997	1998	1999	2000	2001
HOMICIDE	49	45	73	93	115	99	122	*	88	89	71	59	65	84	75	66
RAPE	301	311	320	381	402	354	356	*	351	362	304	342	326	265	304	292
ROBBERY	1486	1933	2369	3208	2899	3058	3227	*	2711	2949	2595	2716	2400	2517	2651	2996
AGGRAVATED ASSAULT	4147	4521	4874	5434	5340	5938	6020	*	5952	5824	5944	6045	5829	5275	4482	4420
BURGLARY - RESIDENTIAL	6583	6851	7956	6836	7247	8475	6763	*	6991	6673	6877	6945	6390	6737	6518	6397
- COMMERCIAL	3534	3754	4813	4055	4358	4090	3929	*	3334	3286	3350	3468	4311	3577	3080	3888
TOTAL BURGLARY	10117	10605	12772	10891	11615	12565	10692	*	10325	9959	10227	10413	10701	10314	9598	10285
LARCENY - FROM AUTO	8175	8885	9876	9891	10960	10830	10968	*	10950	11247	12995	12623	12876	13625	12461	11966
- BICYCLE	697	602	589	542	552	666	553	*	682	859	665	562	567	399	252	175
- SHOPLIFT	4523	5344	5297	4992	5517	4778	4300	*	4064	3934	3964	3893	3619	3569	3050	3477
- OTHER	8328	9405	10648	11728	10770	10740	10549	*	12772	13233	12575	11844	12194	12523	12024	11673
TOTAL LARCENY	21723	24236	26228	27153	27799	27014	26370	*	28468	29273	30199	28922	29256	30116	27789	27291
VEHICLE THEFT	1777	2323	2701	2699	2726	2454	2972	*	3160	3650	4177	4383	3918	4845	4561	4406
TOTAL INDEX WITHOUT ARSON	39600	43974	49337	49859	50896	51482	49759	*	51055	52106	53517	52880	52495	53416	49460	49756
ARSON*	297	365	332	418	442	413	388	*	418	346	440	350	266	287	313	317
TOTAL INDEX	39897	44339	49669	50277	51338	51895	50147	*	51473	52452	53957	53230	52761	53703	49773	50073
VIOLENT PROPERTY	5983	6810	7636	9116	8756	9449	9725	*	9102	9224	8914	9162	8620	8141	7512	7774
	33914	37529	42033	41161	42582	42446	40422	*	42371	43228	45043	44068	44141	45562	42261	42299
YEARLY % CHANGE IN TOTAL INDEX	11.8%	11.1%	12.0%	1.2%	2.1%	1.1%	-3.4%	*	-4.4%	1.9%	2.9%	-1.3%	-0.9%	1.8%	-7.3%	0.6%

RATES PER 100,000 ESTIMATED POPULATION REPORTED BY CHARLOTTE POLICE DEPARTMENT (1971-1993) AND CHARLOTTE-MECKLENBURG POLICE DEPARTMENT (1994-2001)

	CHARLOTTE POLICE DEPARTMENT:																
	1971	1972	1973	1974	1975	1976	1977	1978	1979	1980	1981	1982	1983	1984	1985	1986	
EST. JURISDICTION POPULATION	242095	243012	243929	277364	278263	279180	280097	304087	305004	315473	320191	333176	337895	342613	352332	357051	
HOMICIDE	22.3	24.7	24.6	21.6	24.4	18.6	16.4	16.8	16.1	19.0	16.2	14.1	13.0	15.8	16.5	16.2	
RAPE	40.5	32.1	27.5	20.9	25.5	30.1	42.1	37.2	38.0	45.0	61.8	59.1	76.4	70.9	64.1	84.6	
ROBBERY	236.7	248.1	291.9	362.3	295.4	261.8	219.2	233.2	230.2	217.5	241.4	297.1	326.4	333.6	318.2	407.2	
AGGRAVATED ASSAULT	514.7	482.3	423.1	404.2	350.7	368.2	523.0	513.3	530.2	592.1	669.3	859.6	847.3	872.7	900.3	1029.3	
BURGLARY - RESIDENTIAL	0.0	0.0	1292.2	1843.1	1849.3	1615.4	1668.0	1543.0	1335.7	1560.8	1552.8	1375.5	1373.5	1544.0	1447.5	1777.6	
- COMMERCIAL	0.0	0.0	981.4	1322.1	1228.7	976.4	942.5	762.0	853.1	1052.7	1129.0	1267.2	1026.1	984.8	982.9	910.5	
TOTAL BURGLARY	2039.7	1779.3	2273.6	3165.2	3078.0	2591.9	2610.5	2304.9	2188.8	2613.5	2681.8	2642.7	2399.6	2528.8	2430.4	2688.1	
LARCENY - FROM AUTO	0.0	0.0	1277.8	1451.9	2109.9	2665.7	2271.0	1929.7	1933.7	2062.0	2449.2	2591.1	2304.0	2398.6	2223.8	1983.2	
- BICYCLE	0.0	0.0	271.4	521.0	478.3	376.1	378.4	348.6	310.5	366.4	268.3	328.1	315.5	277.3	243.2	228.5	
- SHOPLIFT	0.0	0.0	592.4	673.5	671.7	663.0	627.6	642.6	671.8	634.9	758.0	995.0	913.0	954.7	952.5	1011.3	
- OTHER	0.0	0.0	1000.3	1200.9	1263.6	1175.9	1161.4	1166.1	1202.9	1298.4	1660.3	1717.1	1727.5	1709.8	1816.2	1996.6	
TOTAL LARCENY	3032.7	2774.3	3141.9	3847.3	4523.4	4880.7	4438.5	4087.0	4119.0	4361.7	5135.7	5631.3	5259.9	5340.4	5235.7	5219.7	
VEHICLE THEFT	448.6	369.1	422.3	439.1	388.8	321.7	359.2	409.8	414.1	457.7	452.5	396.2	395.7	401.3	426.3	464.6	
TOTAL INDEX WITHOUT ARSON	6335.1	5710.0	6604.8	8260.6	8686.4	8473.0	8208.9	7602.1	7536.3	8306.6	9258.8	9900.2	9318.3	9563.6	9391.4	9909.8	
ARSON*	*(Arson was not added to the Index until 1980 and prior arson data is not available.)										63.4	50.0	57.0	76.7	96.0	76.1	88.2
TOTAL INDEX										8370.0	9308.8	9957.2	9394.9	9659.6	9467.5	9998.0	
VIOLENT PROPERTY	814.1	787.2	767.0	809.0	696.1	678.8	800.8	800.4	814.4	873.6	988.8	1230.0	1263.1	1293.0	1299.1	1537.3	
PROPERTY	5521.0	4922.8	5837.8	7451.6	7990.3	7794.3	7408.1	6801.7	6721.9	7433.0	8320.0	8727.2	8131.8	8366.6	8168.4	8460.7	
YEARLY % CHANGE IN TOTAL INDEX	*(Arson was not added to the Index until 1980 and prior arson data is not available.)										NA	11.2%	7.0%	-5.6%	2.8%	-2.0%	

**Population estimates for the city of Charlotte are from the Research Section of the Charlotte Chamber of Commerce.

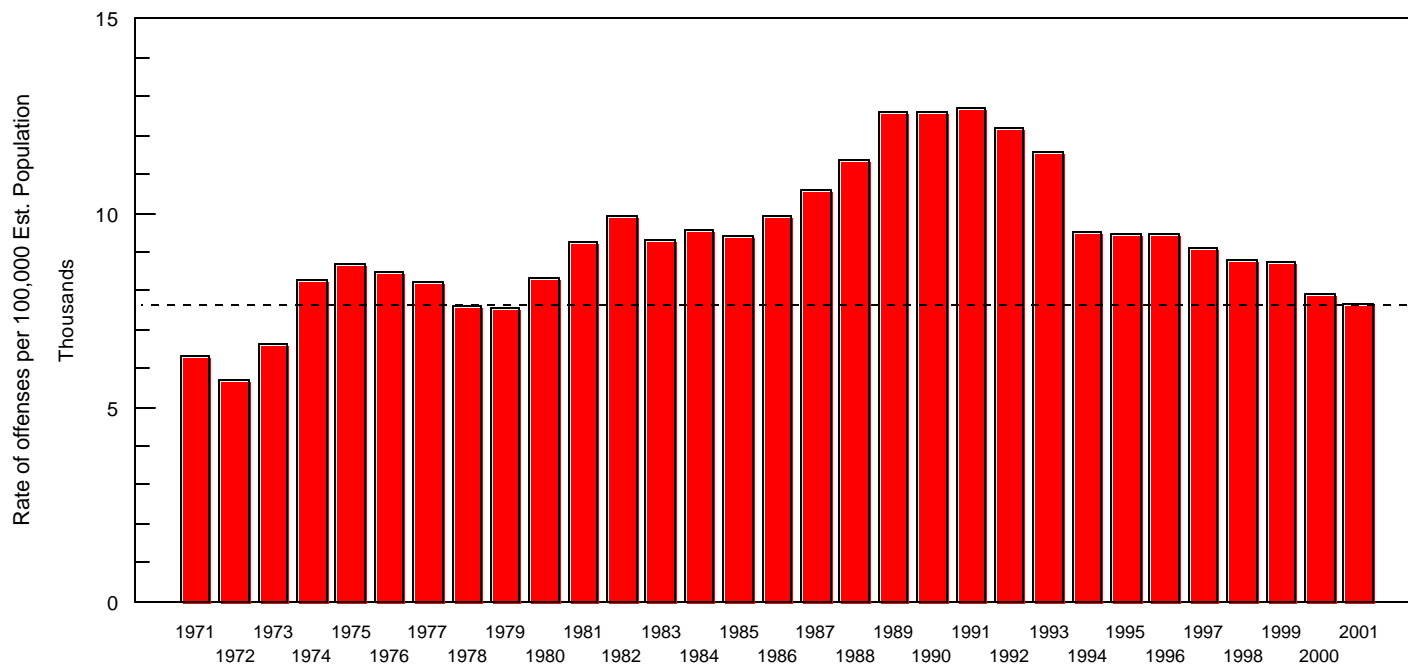
RATES PER 100,000 ESTIMATED POPULATION REPORTED BY CHARLOTTE POLICE DEPARTMENT (1971-1993) AND CHARLOTTE-MECKLENBURG POLICE DEPARTMENT (1994-2001)

	CHARLOTTE POLICE DEPARTMENT:							CHARLOTTE-MECKLENBURG POLICE DEPARTMENT:								
	1987	1988	1989	1990	1991	1992	1993	1994	1995	1996	1997	1998	1999	2000	2001	
EST. JURISDICTION POPULATION	374546	386846	391565	395934	400303	421990	430430	*	537629	551608	566226	580664	595762	611251	625810	648339
HOMICIDE	13.1	11.6	18.6	23.5	28.7	23.5	28.3	*	16.4	16.1	12.5	10.2	10.9	13.7	12.0	10.2
RAPE	80.4	80.4	81.7	96.2	100.4	83.9	82.7	*	65.3	65.6	53.7	58.9	54.7	43.4	48.6	45.0
ROBBERY	396.7	499.7	605.0	810.2	724.2	724.7	749.7	*	504.3	534.6	458.3	467.7	402.8	411.8	423.6	462.1
AGGRAVATED ASSAULT	1107.2	1168.7	1244.7	1372.5	1334.0	1407.1	1398.6	*	1107.1	1055.8	1049.8	1041.0	978.4	863.0	716.2	681.7
BURGLARY - RESIDENTIAL	1757.6	1771.0	2031.8	1726.6	1810.4	2008.3	1571.2	*	1300.3	1209.7	1214.5	1196.0	1072.6	1102.2	1041.5	986.7
- COMMERCIAL	943.5	970.4	1229.2	1024.2	1088.7	969.2	912.8	*	620.1	595.7	591.6	597.2	723.6	585.2	492.2	599.7
TOTAL BURGLARY	2701.1	2741.4	3261.8	2750.7	2901.6	2977.6	2484.0	*	1920.5	1805.4	1806.2	1793.3	1796.2	1687.4	1533.7	1586.4
LARCENY - FROM AUTO	2182.6	2296.8	2522.2	2498.1	2737.9	2566.4	2548.1	*	2036.7	2038.9	2295.0	2173.9	2161.3	2229.0	1991.2	1845.6
- BICYCLE	186.1	155.6	150.4	136.9	137.9	157.8	128.5	*	126.9	155.7	117.4	96.8	95.2	65.3	40.3	27.0
- SHOPLIFT	1207.6	1381.4	1352.8	1260.8	1378.2	1132.3	999.0	*	755.9	713.2	700.1	670.4	607.5	583.9	487.4	536.3
- OTHER	2223.5	2431.2	2719.3	2962.1	2690.5	2545.1	2450.8	*	2375.6	2399.0	2220.8	2039.7	2046.8	2048.7	1921.3	1800.4
TOTAL LARCENY	5799.8	6265.0	6698.2	6858.0	6944.5	6401.6	6126.4	*	5295.1	5306.8	5333.4	4980.8	4910.7	4926.9	4440.5	4209.4
VEHICLE THEFT	474.4	600.5	689.8	681.7	681.0	581.5	690.5	*	587.8	661.7	737.7	754.8	657.6	792.6	728.8	679.6
TOTAL INDEX WITHOUT ARSON	10572.8	11367.3	12600.0	12592.8	12714.4	12199.8	11560.3	*	9496.3	9446.2	9451.5	9106.8	8811.4	8738.8	7903.4	7674.4
ARSON*	79.3	94.4	84.8	105.6	110.4	97.9	90.1	*	77.7	62.7	77.7	60.3	44.6	47.0	50.0	48.9
TOTAL INDEX	10652.1	11461.7	12684.7	12698.3	12824.8	12297.7	11650.4	*	9574.1	9508.9	9529.2	9167.1	8856.1	8785.8	7953.4	7723.3
VIOLENT PROPERTY	1597.4	1760.4	1950.1	2302.4	2187.3	2239.2	2259.4	*	1693.0	1672.2	1574.3	1577.8	1446.9	1331.9	1200.4	1199.1
PROPERTY	9054.7	9701.3	10734.6	10395.9	10637.4	10058.5	9391.1	*	7881.1	7836.7	7955.0	7589.2	7409.2	7453.9	6753.0	6524.2
YEARLY % CHANGE IN TOTAL INDEX	6.5%	7.6%	10.7%	0.1%	1.0%	-4.1%	-5.3%	*	-6.8%	-0.7%	0.2%	-3.8%	-3.4%	-0.8%	-9.5%	-2.9%

The population estimates for the C-MPD jurisdiction in 1991-1999 were extrapolated using the Chamber of Commerce's estimates of the yearly percentage changes in the Mecklenburg County population, applied to the 1990 Census base population for the jurisdiction. For 2001, the same method was applied to the 2000 Census base.

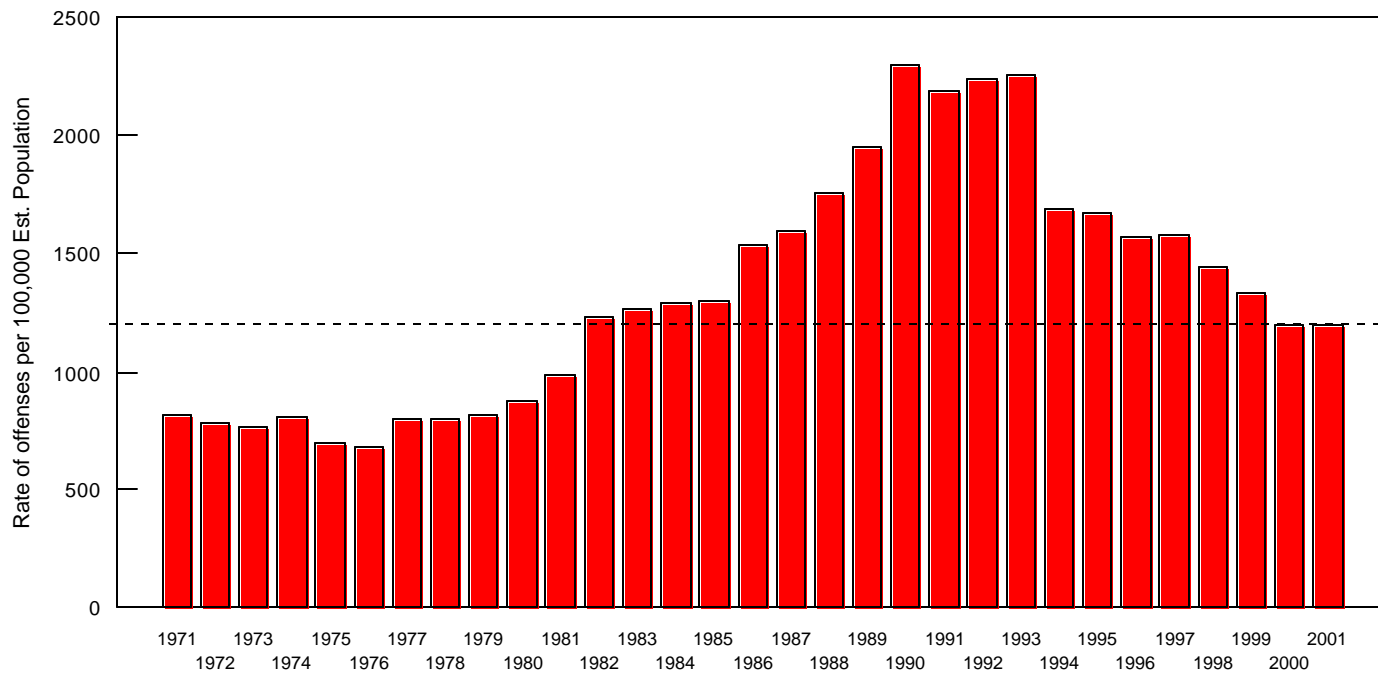
Index Crime Rates per 100,000 Est. Population for the Jurisdiction

Charlotte Police Department (1971-1993) and Charlotte-Mecklenburg Police Department (1994-2001)



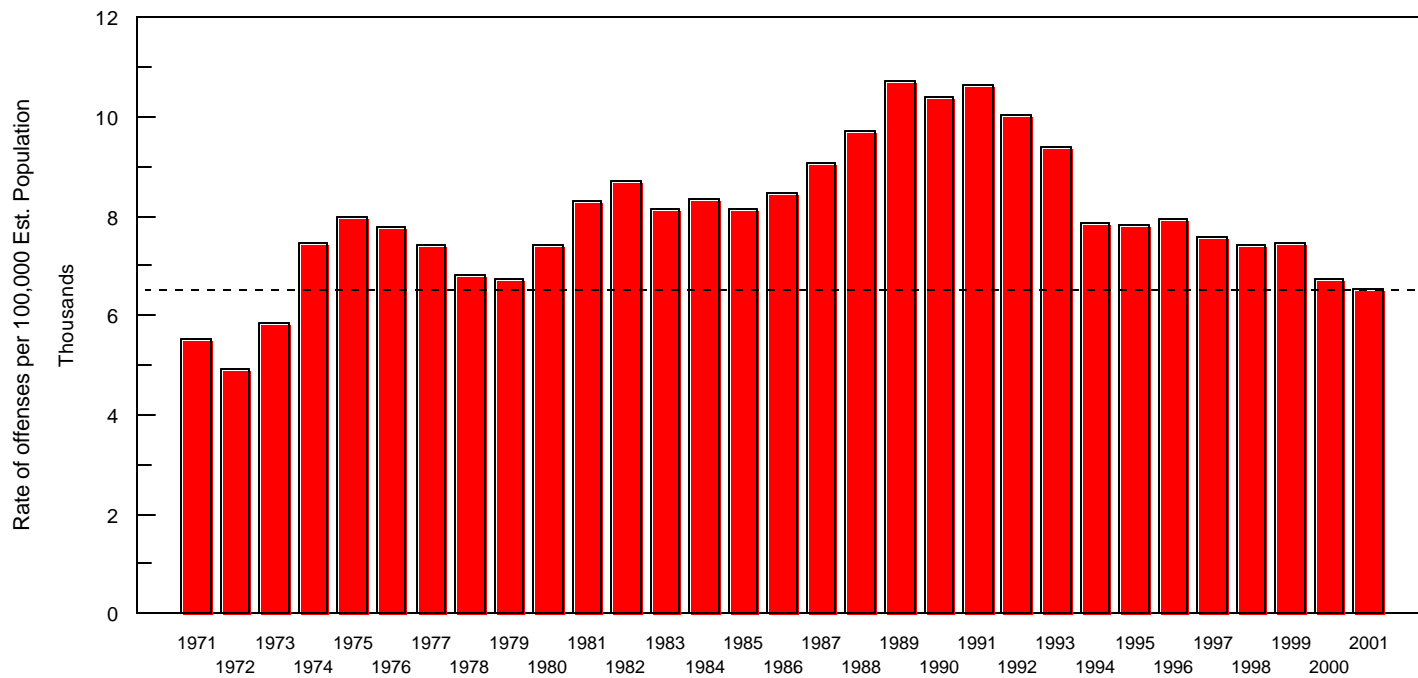
Violent Index Crime Rates per 100,000 Est. Population for the Jurisdiction

Charlotte Police Department (1971-1993) and Charlotte-Mecklenburg Police Department (1994-2001)



Property Index Crime Rates per 100,000 Est. Population for the Jurisdiction

Charlotte Police Department (1971-1993) and Charlotte-Mecklenburg Police Department (1994-2001)



Uniform Crime Reporting Procedures:

The Charlotte-Mecklenburg Police Department reports offense and arrest statistics in accordance with standard Uniform Crime Reporting (UCR) guidelines. UCR policy states that any adjustments to previous months can be made on the current month's report:

...In tabulating crime counts, an agency may find that offense totals for past months require adjustments due to developments in the investigation or other handling of the matter. It may be necessary to adjust totals reported to UCR for the past month or prior months. Needed adjustments can be made on the current month's report and do not affect the reliability of the figures in that such adjustments tend to equalize each other from month to month over a period of time.

- "Uniform Crime Reporting Handbook," FBI, 1984, p. 42-43

We are required to report crime monthly to the UCR program, and we do therefore make an effort to process monthly changes in a timely manner. However, occasionally due to the review and processing required for reclassifying, unbounding or clearing cases, one month's totals may reflect the processing of a backlog of these changes from previous months.

Clearances include cases cleared by both arrest and exception. An exceptional clearance occurs when the identity and location of the offender have been established through adequate investigation but no arrest will be made due to reasons outside law enforcement (prosecution has been declined by district attorney or victim, offender has died or will not be extradited, etc.). Clearance rates are calculated by dividing the number of cases cleared in a year by the number of cases reported in a year. The clearances made each year may include clearances of cases reported in previous years.