



**CHARLOTTE-MECKLENBURG POLICE DEPARTMENT
ANNUAL SUMMARY: 2003**

**Darrel Stephens
Chief of Police**

Research, Planning and Analysis Division

Mar. 20, 2004

Acknowledgements

Offenses, clearances, and arrests are classified and counted in accordance with the national Uniform Crime Reporting (UCR) program.

The jurisdiction population for 2000 was estimated at 625,810 by using the 2000 Census population for the county and subtracting the populations for the five incorporated towns with their own police services. For consistency over the current decade, the populations of the jurisdiction after Census 2000 have been recalculated and are now based on Planning Commission estimates published in July each year. Rate calculations for 2001-2002 may therefore show slight differences from previous annual reports based on estimates from other sources. The jurisdiction population for 2003 does not include Mint Hill, although the crime totals do include crimes occurring in Mint Hill during the first half of the year prior to July 1, 2003.

Data in this report was compiled with the assistance of staff in the several units. Much of it was extracted from the mainframe records systems, monthly UCR reports, and other monthly summary reports of traffic collisions and citation/warning ticket records entered by the CMPD Records Bureau.. The district map was created by Monica Nguyen in the department's GIS system. Frank McDowell assisted with some of the mainframe files. Data for individual CMPD divisions was supplied by the Training Academy, Recruitment, International Relations, Non-Emergency Police Services, HITS, Animal Control, K-9, SWAT, Aviation and the Volunteer Program.

Veronica L. Sorban
Research, Planning and Analysis Division
March 18, 2004

Table of Contents

Index Offenses Reported by the Charlotte-Mecklenburg Police Department:2002-2003	1
Index Offenses by Type: 2003	1
Index Offenses: 1999-2003	2
Index Offenses: 1999-2003 (Bar Chart)	3
Index Offense Rates per 100,000 Population: 1999-2003	4
Annual Percentage Changes in Index Offenses and Rates: 1999-2003 (Line Chart)	5
Index Offenses Reported by Month: 1999-2003	6
Percentage Changes in Cumulative Monthly Total Index Offenses: 2002-2003	6
Five Year Monthly Index Offenses by Category (Line Charts):	
Homicide	7
Rape	7
Robbery	8
Aggravated Assault	8
Residential Burglary	9
Commercial Burglary	9
Larceny	10
Larceny from Auto	10
Vehicle Theft	11
Arson	11
Index Clearances Reported by the Charlotte-Mecklenburg Police Department: 2002-2003	12
Division and Service Area Offense Totals: 2002-2003	
Map of Divisions and Service Area Boundaries	13
Index Offenses by Service Area and Division	14-16
Index Offenses by Service Areas: Violent vs. Property (Bar Chart)	17
Violent and Property Index Offenses by Division: 2002-2003 (Bar Chart)	18
Part 2 and Other Offenses Reported by the Charlotte-Mecklenburg Police Department	19
Non-Criminal Incidents Reported by the Charlotte-Mecklenburg Police Department	19
Arrests Reported by the Charlotte-Mecklenburg Police Department: 2002-2003	20
Arrests by General Category (Bar Chart)	21
Arrests by Juvenile (Under 18 Years Old) and Adult (18 and Older) (Bar Chart)	21
Communications Division: 911 Calls Received in 2003	22
Calls for Service: Citizen Initiated Calls for Service by Type	23
Traffic Collisions Reported by the Charlotte-Mecklenburg Police Department: 2002-2003	24
Traffic Collisions by Type: 2003 (Pie Chart)	24
Traffic Collisions by District: 2002-2003 (Bar Chart)	24
Citations Issued by the Charlotte-Mecklenburg Police Department: 2002-2003	25
Citations Enforcement by Issuing Unit : 2003-2003	26
Citations Issued by Month: 2002-2003	26
Warning Tickets Issued by Charlotte-Mecklenburg Police Department: 2002-2003	
Warning Tickets Issued by Month: 2002-2003 (Line Chart)	27

Warning Tickets Issued by Division: 2002-2003	27
Non-Emergency Police Services: Incident Reports by Division and Month: 2003	28
Calls Received by NEPS by Month	28
International Relations Unit: Activities by Type and Community Served: 2002-2003	29
Hostage/Crisis Negotiation Responses by Division and Type: 2002-2003	30
Hostage Negotiation Responses by Month	30
SWAT Deployments by District and Types: 2002-2003	31
SWAT Training Hours	31
K-9 Unit Activities by Type: 2002-2003	32
K-9 Unit Calls by Month	32
Recruitment Section: Applicants Processed and Hired in 2002 and 2003	33
Training Academy Classroom Hours: 2002-2003	34
Animal Control Division Summary: Activities and Animal Status Summary	35
Animal Control Calls for Service by Month	35
Animal Control Citations Issued by Month	35
Aviation Unit Activities/Calls Summary by Type: 2003	36
Civil Emergency Unit Activities Summary: 2003	37
Intelligence Division Summary: 2003	38
Volunteer Program Hours and Services Summary: 2001-2003	39
Appendix: Table of Index Crimes Reported by Charlotte Police/Charlotte Mecklenburg Police Departments: 1973-2003	i
Table of Index Offense Rates per 100,000 Population: 1973-2002	ii
Index Offense Rates per 100,000 Population: 1972-2002 (Bar Chart)	iii
Violent Index Offense Rates per 100,000 Population: 1972-2002 (Bar Chart)	iv
Property Index Offense Rates per 100,000 Population: 1972-2002 (Bar Chart)	v
Uniform Crime Reporting Procedures	vi

**INDEX OFFENSES REPORTED TO THE CHARLOTTE-MECKLENBURG POLICE DEPARTMENT
2002-2003**

Index Categories	Number of Offenses:			Rate per Estimated 100,000 Population ¹ :		
	2002	2003	% Change	2002 Est. Pop. 673177 ¹	2003 Est. Pop. 674509 ¹	% Change
HOMICIDE (MURDER & NON-NEGLIGENT MANSLAUGHTER)	67	66	-1.5% *	10.0	9.8	-1.7%
RAPE TOTAL	289	299	3.5% *	42.9	44.3	3.3%
ACTUAL	255	266	4.3% *	37.9	39.4	4.1%
ATTEMPT	34	33	-2.9% *	5.1	4.9	-3.1%
ROBBERY TOTAL	2893	2688	-7.1% *	429.8	398.5	-7.3%
ARMED	2277	2121	-6.9% *	338.2	314.5	-7.0%
STRONG-ARM	616	567	-8.0% *	91.5	84.1	-8.1%
AGGRAVATED ASSAULT TOTAL	4334	4137	-4.5% *	643.8	613.3	-4.7%
BURGLARY TOTAL	10516	11066	5.2% *	1562.1	1640.6	5.0%
RESIDENTIAL	7213	7876	9.2% *	1071.5	1167.7	9.0%
COMMERCIAL	3303	3190	-3.4% *	490.7	472.9	-3.6%

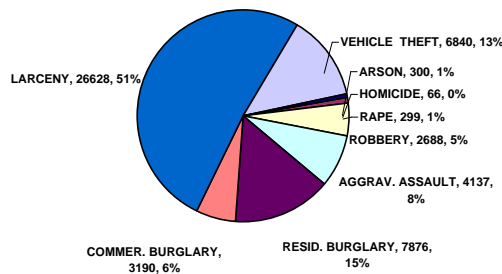
FORCE	8201	8739	6.6% *	1218.3	1295.6	6.3%
NO FORCE	1580	1639	3.7% *	234.7	243.0	3.5%
ATTEMPT	735	678	-7.8% *	109.2	100.5	-7.9%
LARCENY TOTAL	25860	26628	3.0% *	3841.5	3947.8	2.8%
\$200 AND OVER	12478	13209	5.9% *	1853.6	1958.3	5.6%
\$50 TO \$200	4888	4800	-1.8% *	726.1	711.6	-2.0%
UNDER \$50	8494	8619	1.5% *	1261.8	1277.8	1.3%

FROM AUTO	13171	14044	6.6% *	1956.5	2082.1	6.4%
BICYCLE	173	206	19.1% *	25.7	30.5	18.8%
SHOPLIFTING	3182	2777	-12.7% *	472.7	411.7	-12.9%
OTHERS	9334	9601	2.9% *	1386.6	1423.4	2.7%
VEHICLE THEFT TOTAL	4638	6840	47.5% *	689.0	1014.1	47.2%
ARSON TOTAL	455	300	-34.1% *	67.6	44.5	-34.2%
TOTALS	49052	52024	6.1% *	7286.6	7712.9	5.8%
VIOLENT ²	7583	7190	-5.2% *	1126.4	1066.0	-5.4%
PROPERTY ²	41469	44834	8.1% *	6160.2	6646.9	7.9%

¹Population estimates for 2002 and 2003 have been adjusted to use the Planning Commission's annual estimates. The annual population for 2003 does not include Mint Hill, although the crime totals do include crimes occurring in Mint Hill during the first half of the year prior to July 1, 2003.

²Violent Index includes homicide, rape, robbery, and aggravated assault; property Index includes burglary, larceny, vehicle theft and arson.

**Reported Index Offenses By Charlotte-Mecklenburg Police Dept.
By Type, Number, and Percentage of Total: 2003**



Uniform Crime Reporting Procedures:

The Charlotte-Mecklenburg Police Department reports offense and arrest statistics in accordance with standard Uniform Crime Reporting (UCR) guidelines. UCR policy states that any adjustments to previous months can be made on the current month's report:

...In tabulating crime counts, an agency may find that offense totals for past months require adjustments due to developments in the investigation or other handling of the matter. It may be necessary to adjust totals reported to UCR for the past month or prior months. Needed adjustments can be made on the current month's report and do not affect the reliability of the figures in that such adjustments tend to equalize each other from month to month over a period of time.

- *Uniform Crime Reporting Handbook*, FBI, 1984, p. 42-43

We are required to report crime monthly to the UCR program, and we do therefore make an effort to process monthly changes in a timely manner. However, occasionally due to the review and processing required for reclassifying, unfounding or clearing cases, the current month's totals may reflect the processing of a backlog of these changes from previous months.

Users of the data are cautioned that conclusions about substantial changes in crime trends or in clearance rates based on only a single month's data or trend may reflect some of these adjustments. For this reason, in addition to the monthly and year-to-date trends on Page 1, the monthly report routinely includes a comparison for the previous 12 months (p. 4), as well as graphs that provide seasonal/monthly comparisons over a five-year period (p. 5-8).

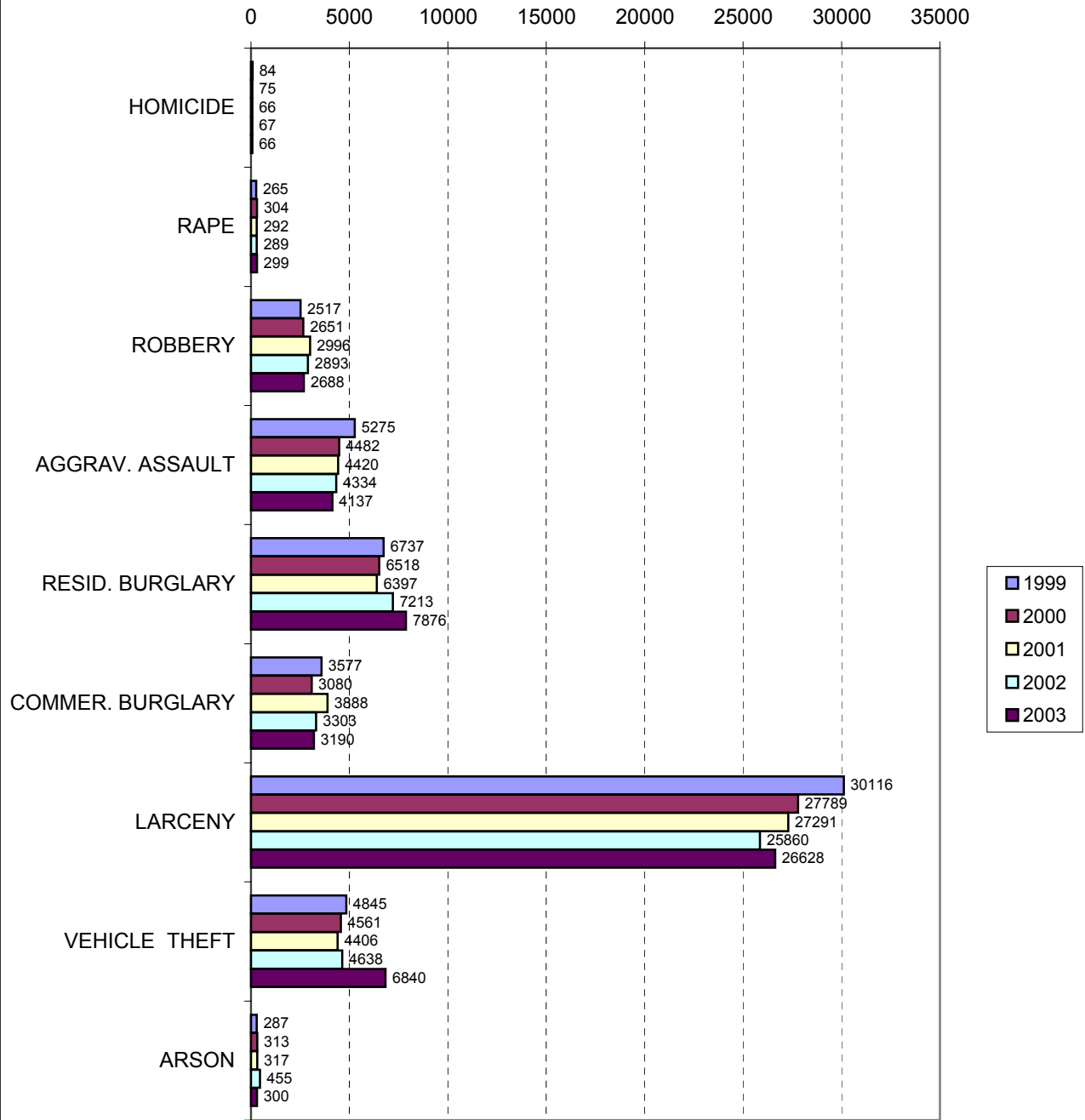
We do make an effort to present the most accurate information available at the time this report is published. Please notify the Research, Planning, and Analysis office if you have any questions about the data in this report.

The division names adopted in 2003 are used in this report. For ease of use, they also include the old district designations in parentheses.

**INDEX OFFENSES REPORTED TO THE CHARLOTTE-MECKLENBURG POLICE DEPARTMENT
FIVE YEAR TRENDS: 1999-2003**

<u>Index Categories</u>	<u>1999</u>	<u>2000</u>	<u>% Change from Previous Year</u>	<u>2001</u>	<u>% Change from Previous Year</u>	<u>2002</u>	<u>% Change from Previous Year</u>	<u>2003</u>	<u>% Change from Previous Year</u>	<u>% Change from 1999</u>
HOMICIDE	84	75	-10.7% *	66	-12.0% *	67	1.5% *	66	-1.5% * *	-21.4%
RAPE	265	304	14.7% *	292	-3.9% *	289	-1.0% *	299	3.5% * *	12.8%
ROBBERY	2517	2651	5.3% *	2996	13.0% *	2893	-3.4% *	2688	-7.1% * *	6.8%
AGGRAVATED ASSAULT	5275	4482	-15.0% *	4420	-1.4% *	4334	-1.9% *	4137	-4.5% * *	-21.6%
BURGLARY	10314	9598	-6.9% *	10285	7.2% *	10516	2.2% *	11066	5.2% * *	7.3%
RESIDENTIAL	6737	6518	-3.3% *	6397	-1.9% *	7213	12.8% *	7876	9.2% * *	16.9%
COMMERCIAL	3577	3080	-13.9% *	3888	26.2% *	3303	-15.0% *	3190	-3.4% * *	-10.8%
LARCENY	30116	27789	-7.7% *	27291	-1.8% *	25860	-5.2% *	26628	3.0% * *	-11.6%
FROM AUTO	13625	12461	-8.5% *	11966	-4.0% *	13171	10.1% *	14044	6.6% * *	3.1%
BICYCLE	399	252	-36.8% *	175	-30.6% *	173	-1.1% *	206	19.1% * *	-48.4%
SHOPLIFTING	3569	3052	-14.5% *	3477	13.9% *	3182	-8.5% *	2777	-12.7% * *	-22.2%
OTHERS	12523	12024	-4.0% *	11673	-2.9% *	9334	-20.0% *	9601	2.9% * *	-23.3%
VEHICLE THEFT	4845	4561	-5.9% *	4406	-3.4% *	4638	5.3% *	6840	47.5% * *	41.2%
ARSON	287	313	9.1% *	317	1.3% *	455	43.5% *	300	-34.1% * *	4.5%
TOTAL INDEX	53703	49773	-7.3% *	50073	0.6% *	49052	-2.0% *	52024	6.1% * *	-3.1%
VIOLENT PROPERTY	8141 45562	7512 42261	-7.7% * -7.2% *	7774 42299	3.5% * 0.1% *	7583 41469	-2.5% * -2.0% *	7190 44834	-5.2% * * 8.1% * *	-11.7% -1.6%

**Index Offenses Reported by Month
Charlotte-Mecklenburg Police Department:
Five Year Trends: 1999-2003**

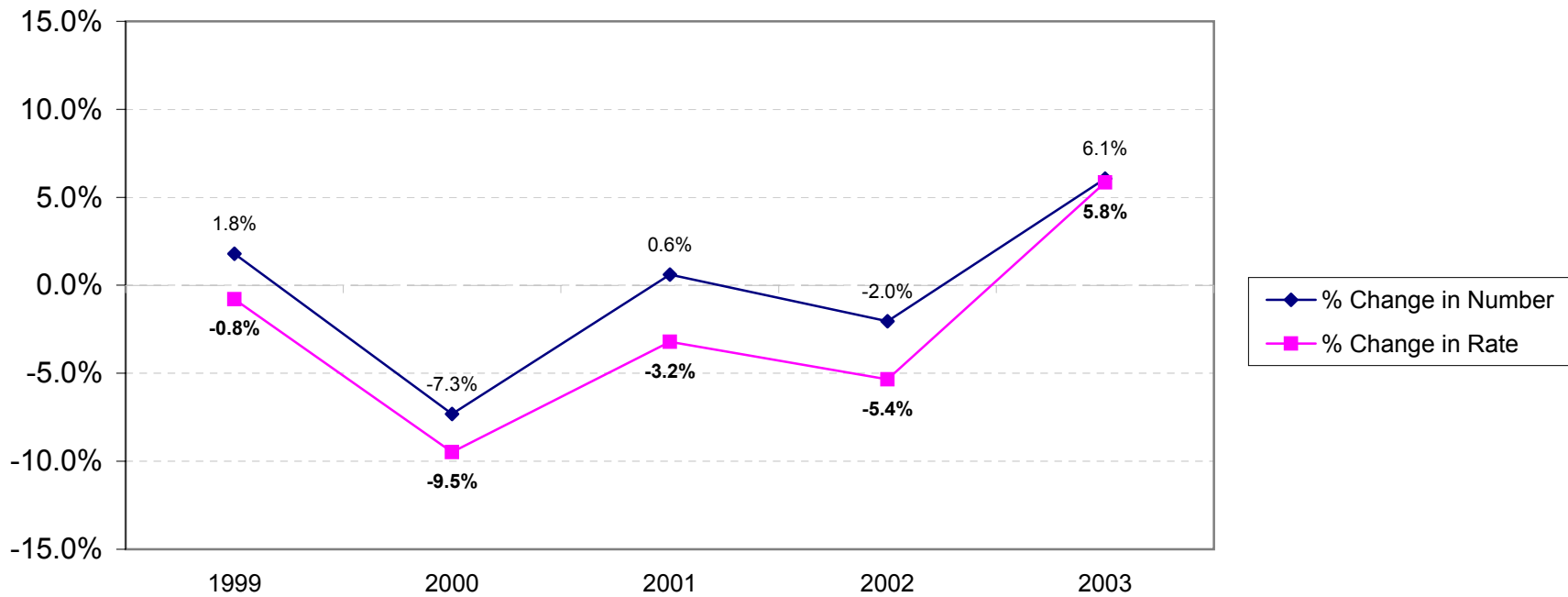


**INDEX OFFENSE RATES PER 100,000 POPULATION¹ REPORTED BY THE CHARLOTTE-MECKLENBURG POLICE DEPARTMENT
FIVE YEAR TRENDS: 1999-2003**

<u>Index Categories</u> (Est. Population ¹)	<u>1999</u> 611251	<u>2000</u> 625810	<u>% Change from</u> <u>Previous Year</u>	<u>2001</u> 650407	<u>% Change from</u> <u>Previous Year</u>	<u>2002</u> 673177	<u>% Change from</u> <u>Previous Year</u>	<u>2003</u> 674509	<u>% Change from</u> <u>Previous Year</u>	<u>% Change</u> <u>from 1999</u>
HOMICIDE	13.7	12.0	-12.8% *	10.1	-15.3% *	10.0	-1.9% *	9.8	-1.7% *	-28.8%
RAPE	43.4	48.6	12.0% *	44.9	-7.6% *	42.9	-4.4% *	44.3	3.3% *	2.2%
ROBBERY	411.8	423.6	2.9% *	460.6	8.7% *	429.8	-6.7% *	398.5	-7.3% *	-3.2%
AGGRAVATED ASSAULT	863.0	716.2	-17.0% *	679.6	-5.1% *	643.8	-5.3% *	613.3	-4.7% *	-28.9%
BURGLARY	1687.4	1533.7	-9.1% *	1581.3	3.1% *	1562.1	-1.2% *	1640.6	5.0% *	-2.8%
RESIDENTIAL	1102.2	1041.5	-5.5% *	983.5	-5.6% *	1071.5	8.9% *	1167.7	9.0% *	5.9%
COMMERCIAL	585.2	492.2	-15.9% *	597.8	21.5% *	490.7	-17.9% *	472.9	-3.6% *	-19.2%
LARCENY	4926.9	4440.5	-9.9% *	4196.0	-5.5% *	3841.5	-8.4% *	3947.8	2.8% *	-19.9%
FROM AUTO	2229.0	1991.2	-10.7% *	1839.8	-7.6% *	1956.5	6.3% *	2082.1	6.4% *	-6.6%
BICYCLE	65.3	40.3	-38.3% *	26.9	-33.2% *	25.7	-4.5% *	30.5	18.8% *	-53.2%
SHOPLIFTING	583.9	487.7	-16.5% *	534.6	9.6% *	472.7	-11.6% *	411.7	-12.9% *	-29.5%
OTHERS	2048.7	1921.3	-6.2% *	1794.7	-6.6% *	1386.6	-22.7% *	1423.4	2.7% *	-30.5%
VEHICLE THEFT	792.6	728.8	-8.1% *	677.4	-7.1% *	689.0	1.7% *	1014.1	47.2% *	27.9%
ARSON	47.0	50.0	6.5% *	48.7	-2.6% *	67.6	38.7% *	44.5	-34.2% *	-5.3%
TOTAL INDEX	8785.8	7953.4	-9.5% *	7698.7	-3.2% *	7286.6	-5.4% *	7712.9	5.8% *	-12.2%
VIOLENT	1331.9	1200.4	-9.9% *	1195.3	-0.4% *	1126.4	-5.8% *	1066.0	-5.4% *	-20.0%
PROPERTY	7453.9	6753.0	-9.4% *	6503.5	-3.7% *	6160.2	-5.3% *	6646.9	7.9% *	-10.8%

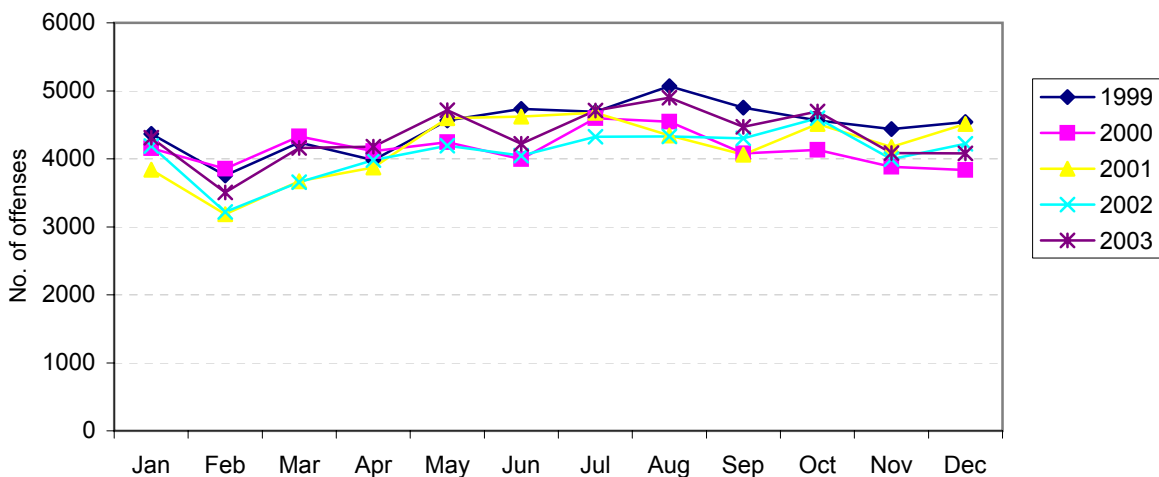
¹For consistency, the populations of the jurisdiction after Census 2000 are now based on Planning Commission estimates published in July each year; rate calculations for 2001-2002 may therefore show slight differences from previous annual reports based on estimates from other sources. The population for 2003 does not include Mint Hill, although the crime totals do include crimes occurring in Mint Hill during the first half of the year prior to July 1, 2003.

Five Year Trends in Annual Percentage Change in Reported Index and in Rate per Population¹ in the Charlotte-Mecklenburg Police Jurisdiction: 1999-2003

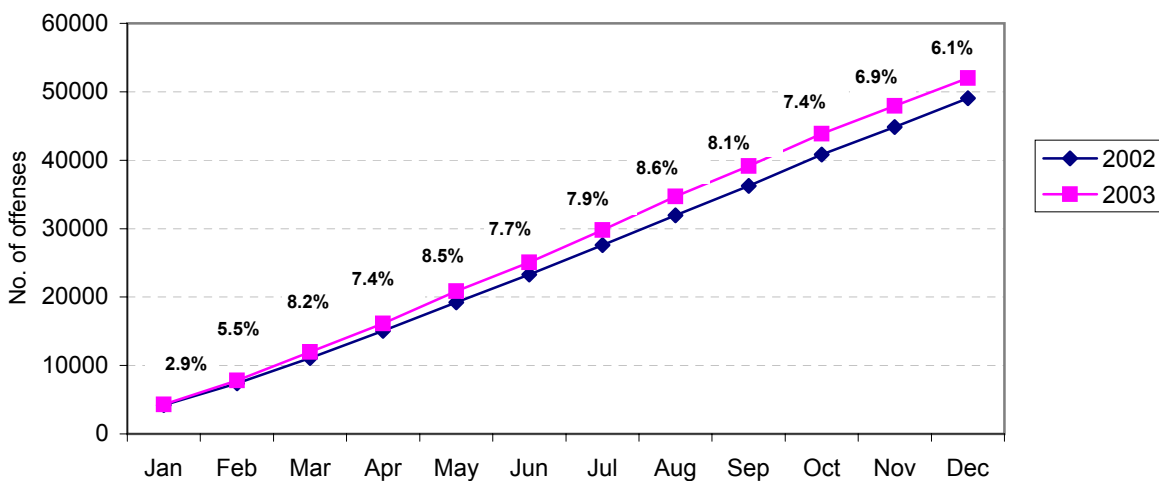


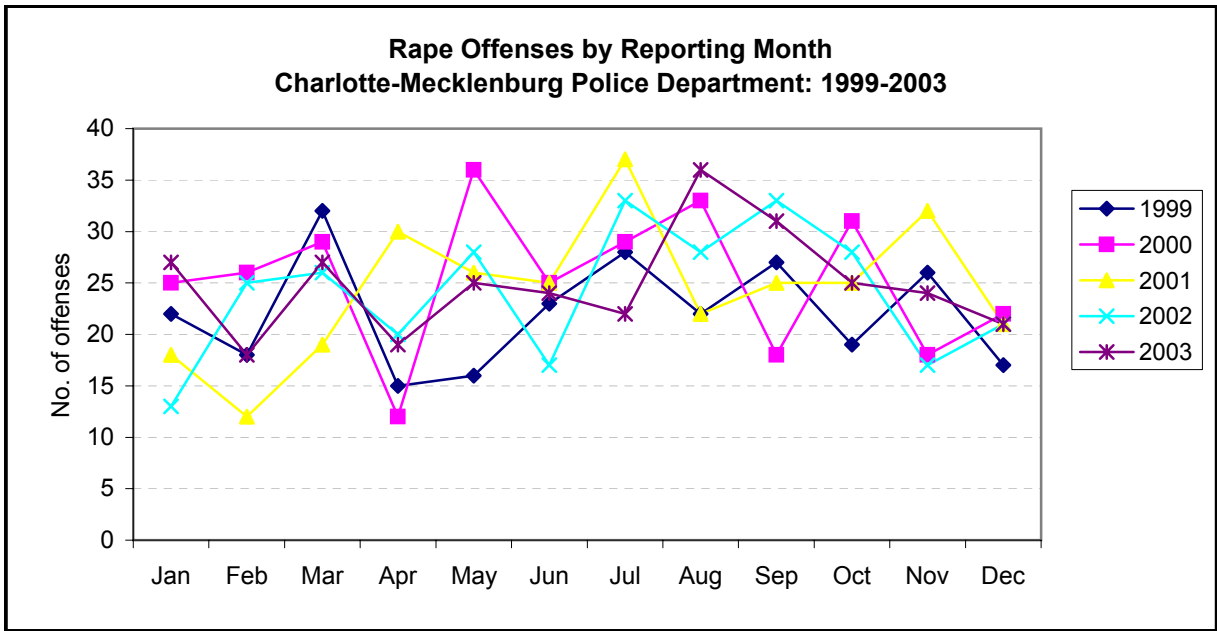
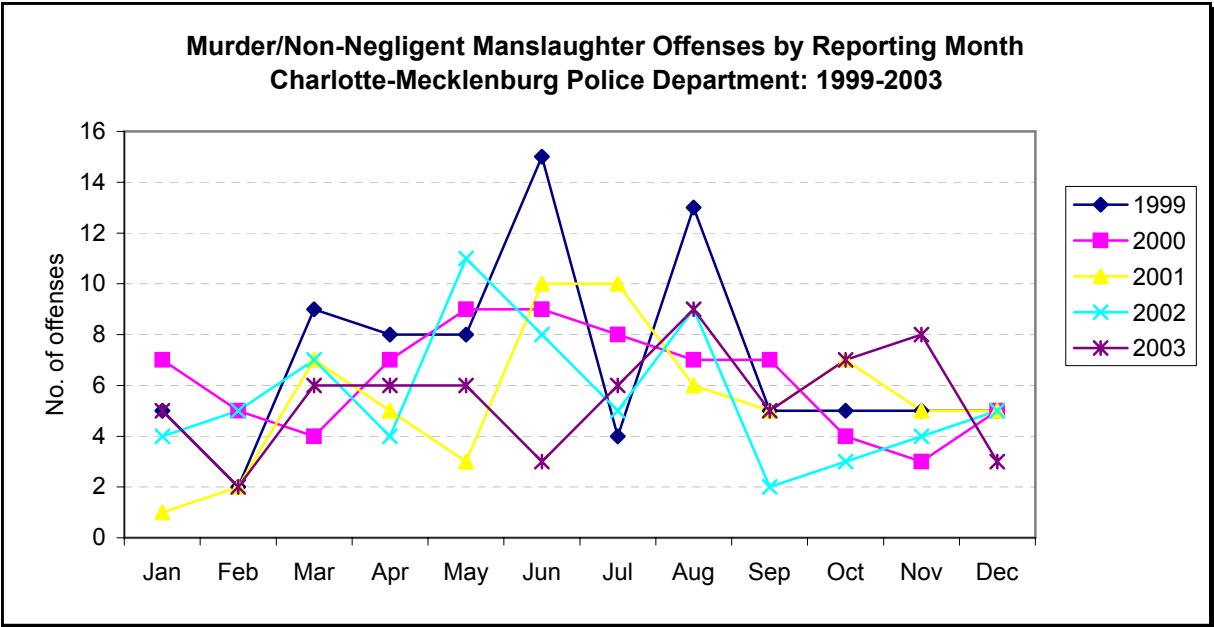
¹The annual population for 2003 does not include Mint Hill, although the crime totals do include crimes occurring in Mint Hill during the first half of the year prior to July 1, 2003. The population base used in the 2003 calculations showed little change from 2002 due to that exclusion.

**Total Index Offenses by Reporting Month
Charlotte-Mecklenburg Police Department: 1999-2003**

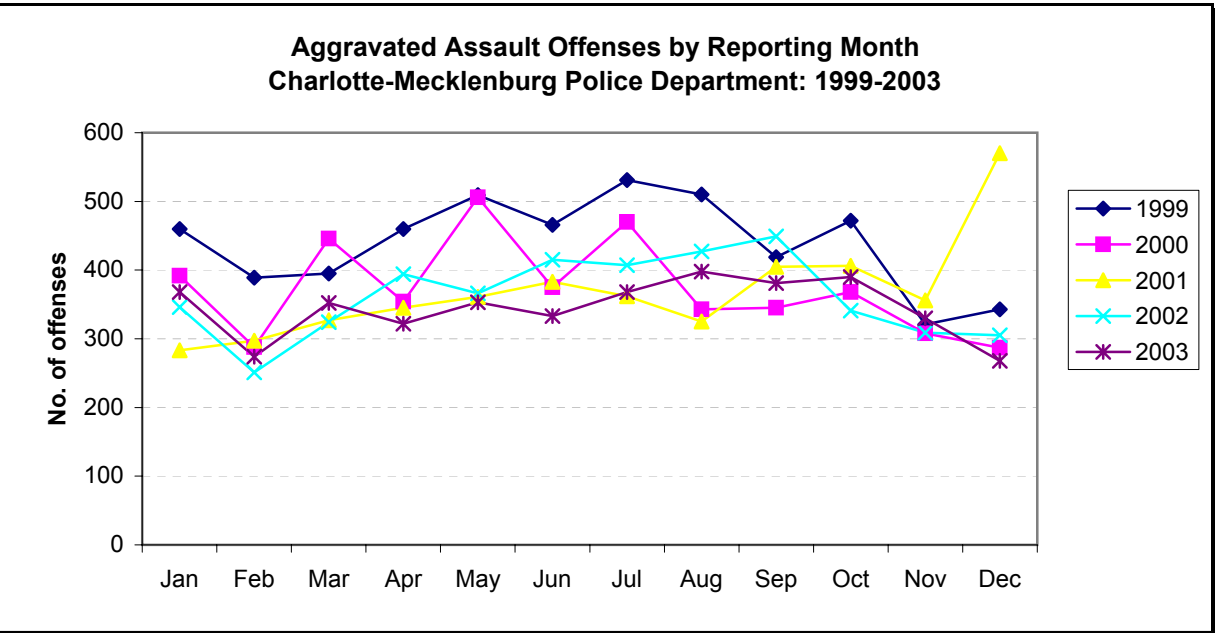
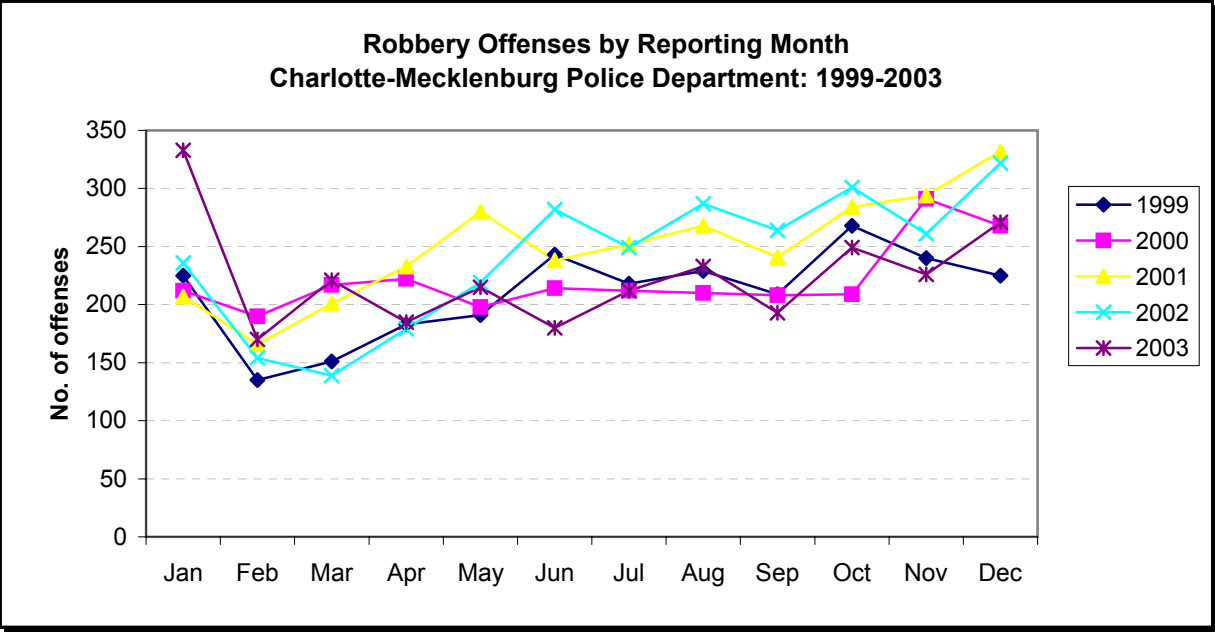


**Year-to-Date Index Offense Totals & % Change by Reporting Month
Charlotte-Mecklenburg Police Department: 2002-2003**

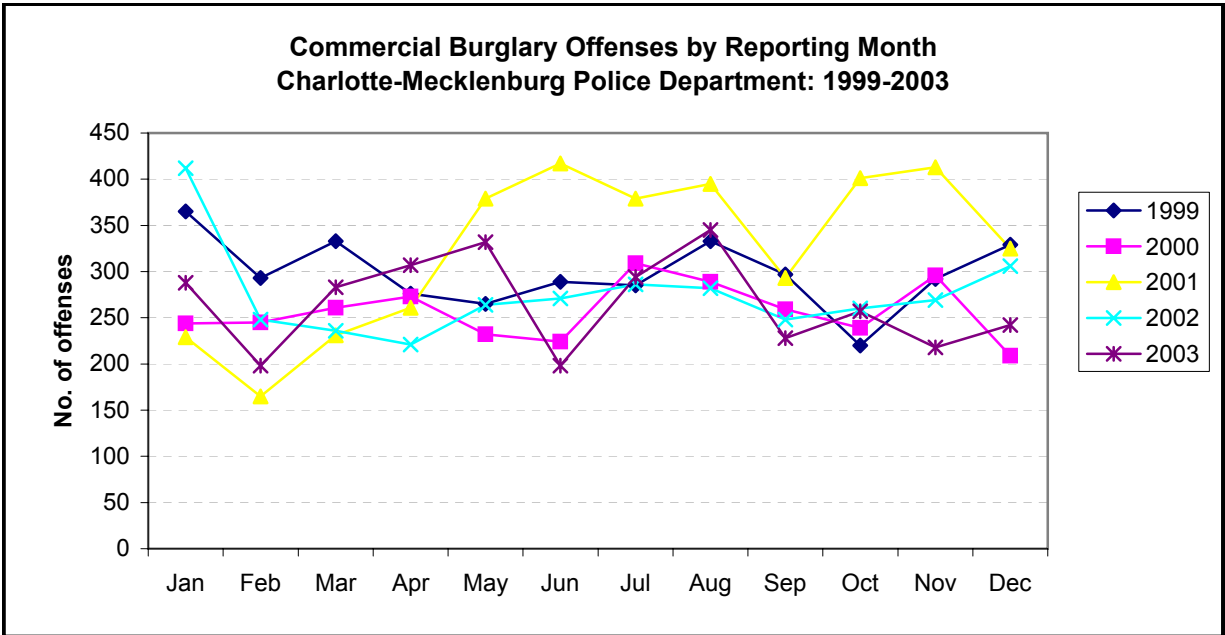
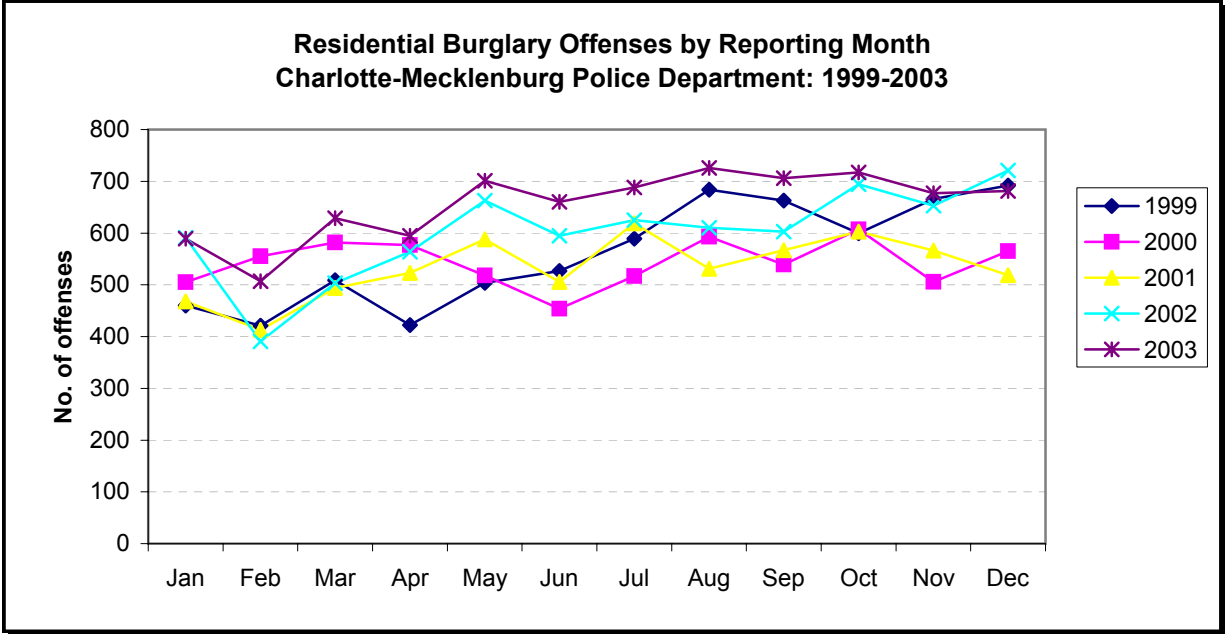




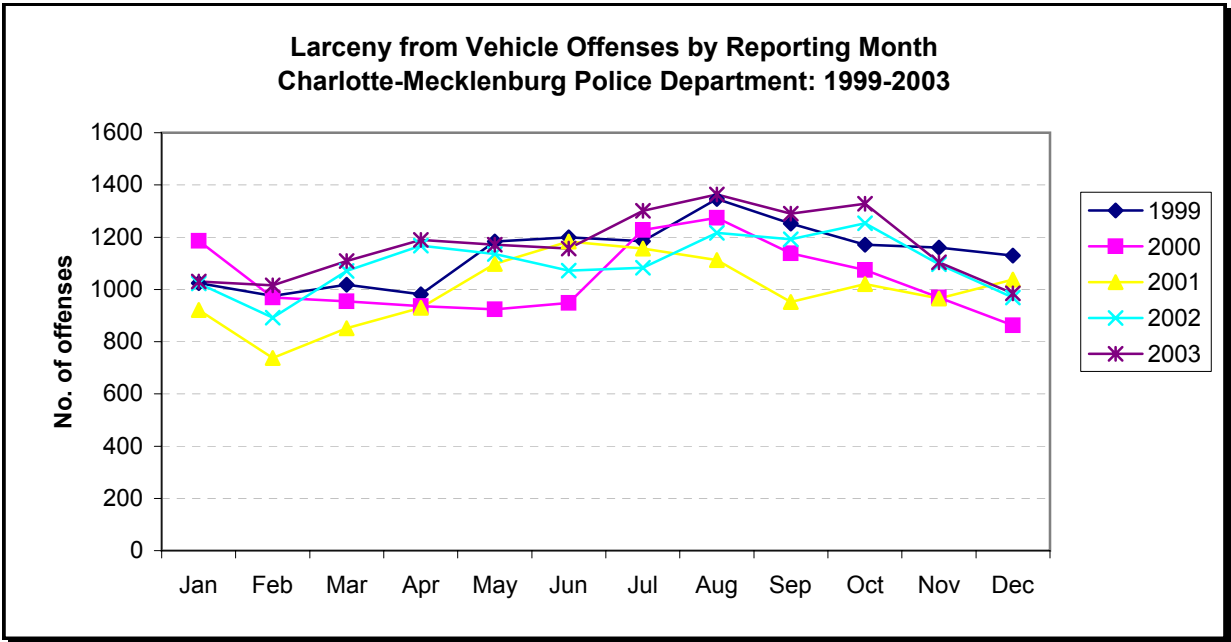
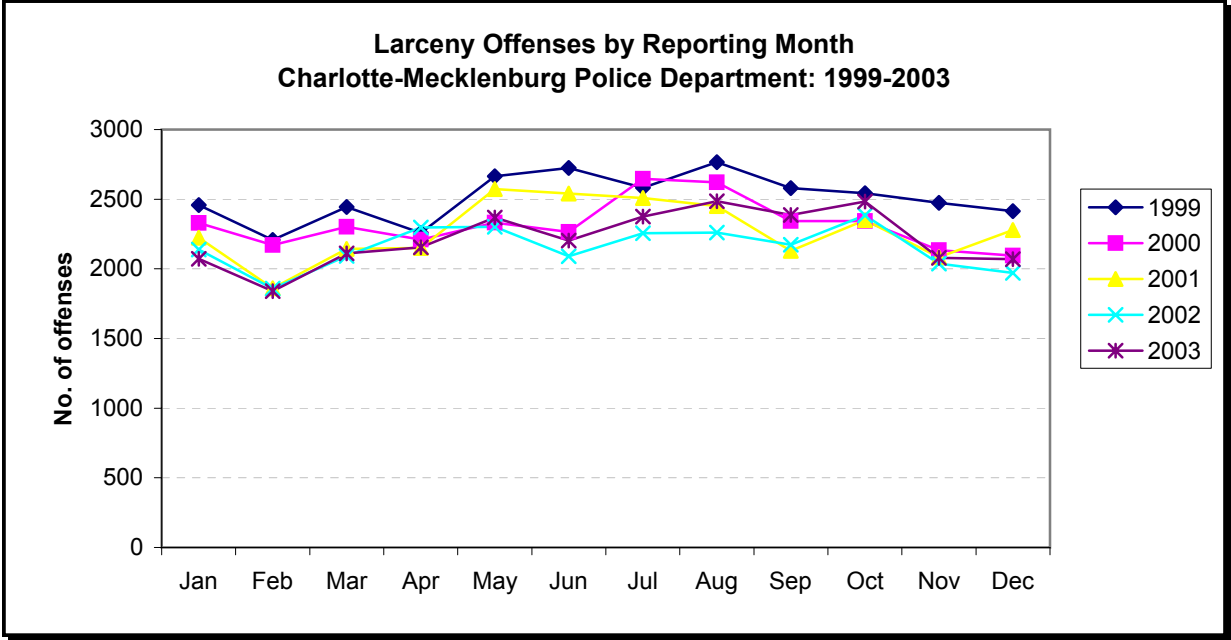
Note: Offenses are counted based on the Uniform Crime Reporting program's Index crime hierarchy and classification guidelines.



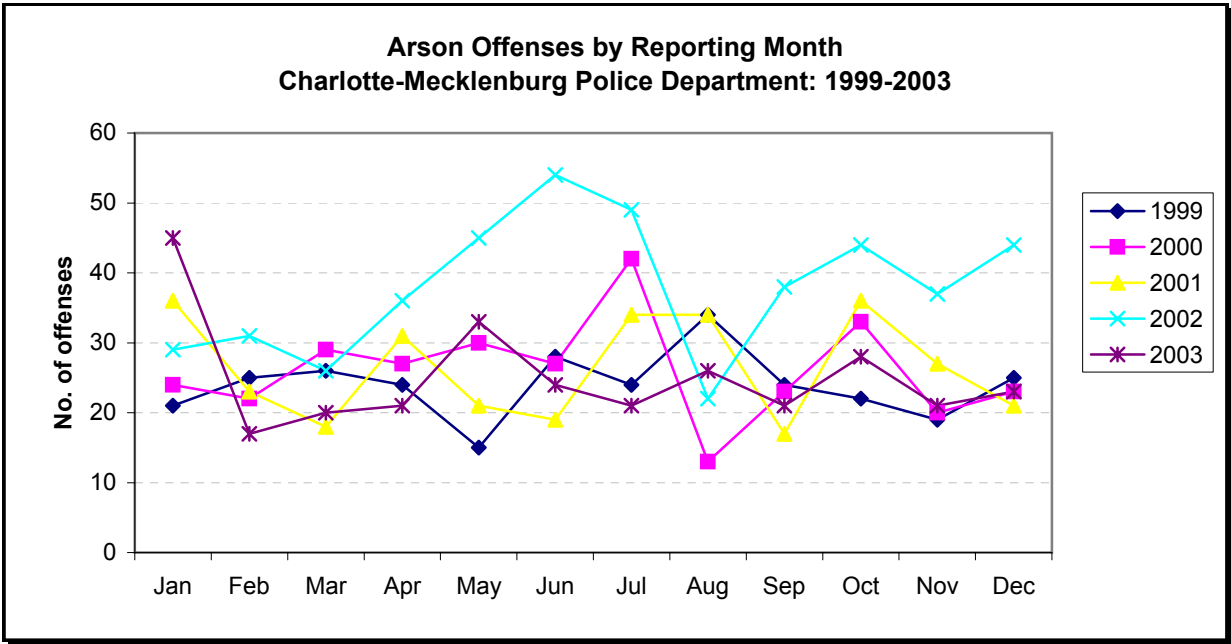
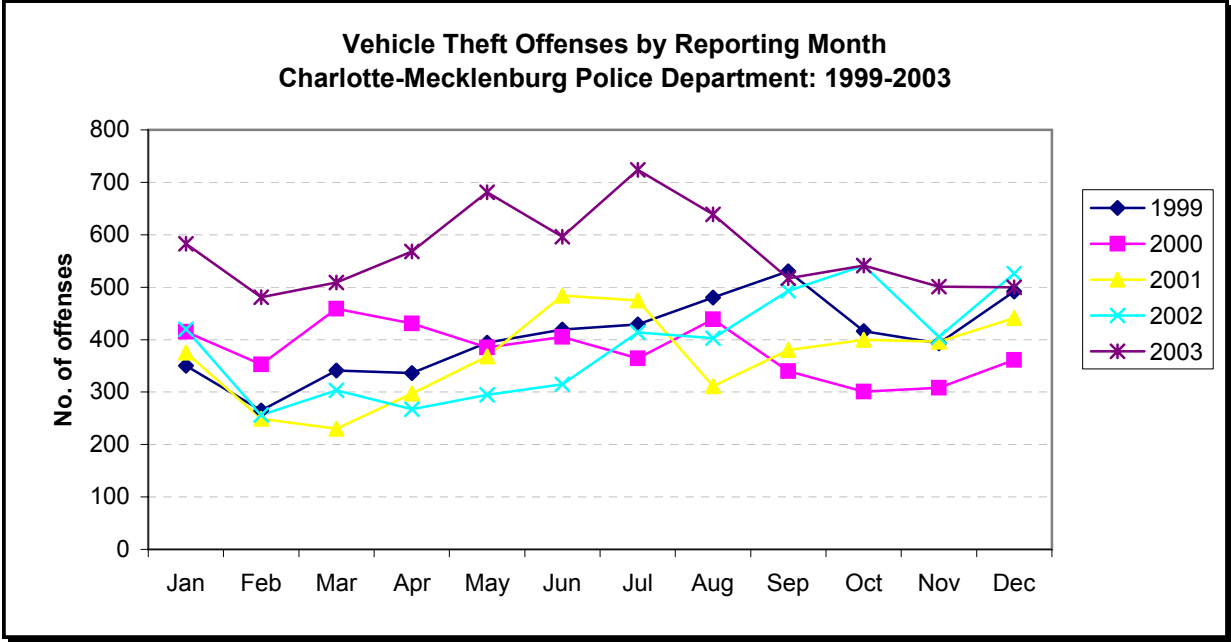
Note: Offenses are counted based on the Uniform Crime Reporting program's Index crime hierarchy and classification guidelines.



Note: Offenses are counted based on the Uniform Crime Reporting program's Index crime hierarchy and classification guidelines.



Note: Offenses are counted based on the Uniform Crime Reporting program's Index crime hierarchy and classification guidelines.



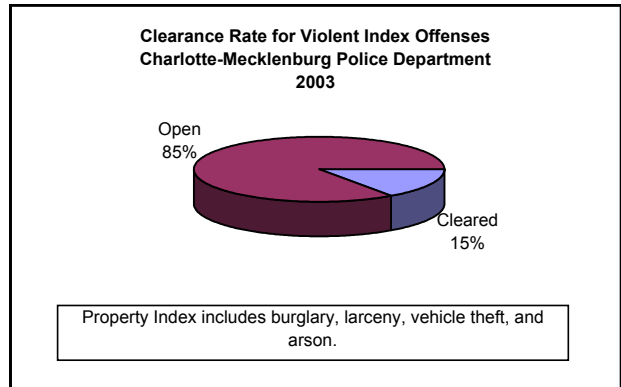
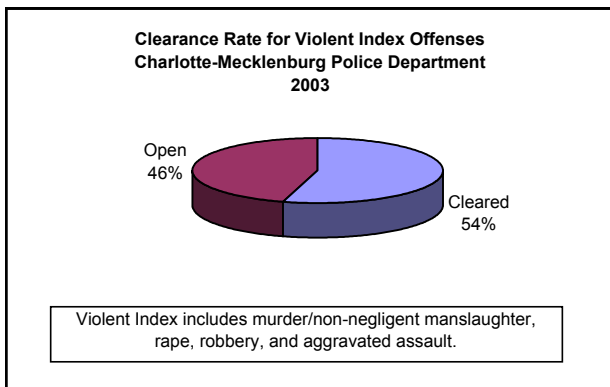
Note: Offenses are counted based on the Uniform Crime Reporting program's Index crime hierarchy and classification guidelines.

**INDEX CLEARANCES¹ REPORTED BY THE CHARLOTTE-MECKLENBURG POLICE DEPARTMENT
2002-2003**

INDEX CLEARANCES	2002:		2003:	
	Number	Clearance Rate ²	Number	Clearance Rate ²
MURDER & NON-NEGLIGENT MANSLAUGHTER	46	68.7%	43	65.2%
RAPE TOTAL	136	47.1%	230	76.9%
ACTUAL	121	47.5%	209	78.6%
ATTEMPT	15	44.1%	21	63.6%
ROBBERY TOTAL	640	22.1%	660	24.6%
ARMED	460	20.2%	451	21.3%
STRONG-ARM	180	29.2%	209	36.9%
AGGRAVATED ASSAULT TOTAL	2301	53.1%	2984	72.1%
BURGLARY TOTAL	957	9.1%	1365	12.3%
RESIDENTIAL	748	10.4%	938	11.9%
COMMERCIAL	209	6.3%	427	13.4%
LARCENY TOTAL	3053	11.8%	3950	14.8%
FROM AUTO	369	2.8%	435	3.1%
BICYCLE	16	9.2%	23	11.2%
SHOPLIFTING	1670	52.5%	1654	59.6%
OTHERS	998	10.7%	1712	17.8%
VEHICLE THEFT TOTAL	851	18.3%	1446	21.1%
ARSON TOTAL	99	21.8%	78	26.0%
TOTALS	8083	16.5%	10756	20.7%
VIOLENT	3123	41.2%	3917	54.5%
PROPERTY	4960	12.0%	6839	15.3%

¹Clearances and clearance rates are reported in accordance with Uniform Crime Report(UCR) guidelines and include both clearances by arrest and by "exception." An arrest clearance occurs when at least one person is arrested in the case. An "exceptional" clearance occurs when law enforcement has identified at least one offender, but for reasons outside law enforcement control (death of offender, declining of prosecution by victim or district attorney, refusal to extradite, etc.), an arrest is not made.

²The clearance rate is defined by UCR as the percentage that represents the number of cases cleared during the year (regardless of when the offense occurred) divided by the number of cases reported in that year.

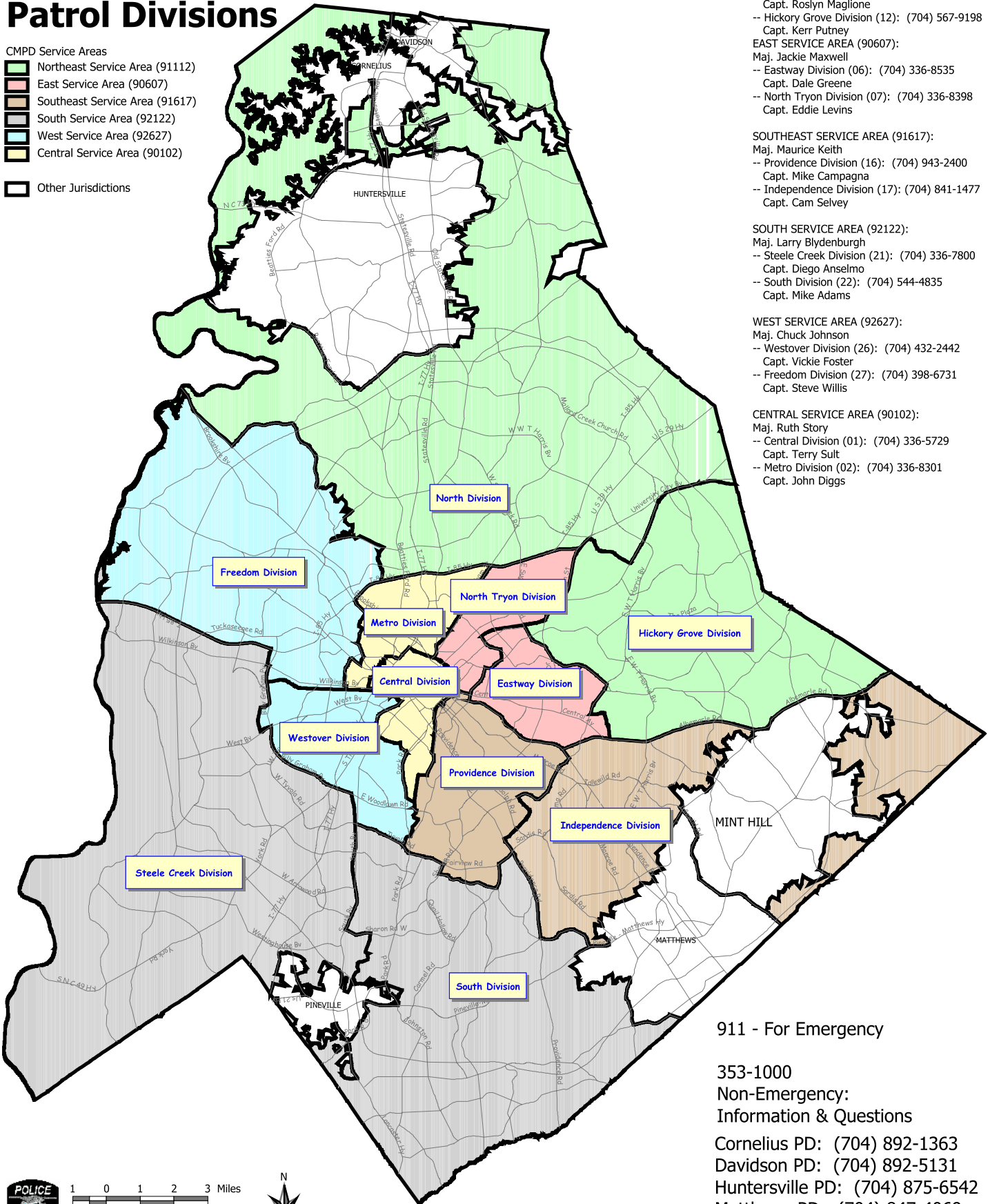


Charlotte-Mecklenburg Police Department Patrol Divisions

CMPD Service Areas

- Northeast Service Area (91112)
- East Service Area (90607)
- Southeast Service Area (91617)
- South Service Area (92122)
- West Service Area (92627)
- Central Service Area (90102)

Other Jurisdictions



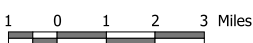
- NORTHEAST SERVICE AREA (91112):**
 Maj. Lisa Shores
 -- North Division (11): (704) 593-1340
 Capt. Roslyn Maglione
 -- Hickory Grove Division (12): (704) 567-9198
 Capt. Kerr Putney
- EAST SERVICE AREA (90607):**
 Maj. Jackie Maxwell
 -- Eastway Division (06): (704) 336-8535
 Capt. Dale Greene
 -- North Tryon Division (07): (704) 336-8398
 Capt. Eddie Levins
- SOUTHEAST SERVICE AREA (91617):**
 Maj. Maurice Keith
 -- Providence Division (16): (704) 943-2400
 Capt. Mike Campagna
 -- Independence Division (17): (704) 841-1477
 Capt. Cam Selvey
- SOUTH SERVICE AREA (92122):**
 Maj. Larry Blydenburgh
 -- Steele Creek Division (21): (704) 336-7800
 Capt. Diego Anselmo
 -- South Division (22): (704) 544-4835
 Capt. Mike Adams
- WEST SERVICE AREA (92627):**
 Maj. Chuck Johnson
 -- Westover Division (26): (704) 432-2442
 Capt. Vickie Foster
 -- Freedom Division (27): (704) 398-6731
 Capt. Steve Willis
- CENTRAL SERVICE AREA (90102):**
 Maj. Ruth Story
 -- Central Division (01): (704) 336-5729
 Capt. Terry Sult
 -- Metro Division (02): (704) 336-8301
 Capt. John Diggs

911 - For Emergency

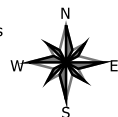
353-1000

Non-Emergency:
 Information & Questions

- Cornelius PD: (704) 892-1363
- Davidson PD: (704) 892-5131
- Huntersville PD: (704) 875-6542
- Matthews PD: (704) 847-4069
- Pineville PD: (704) 889-2231
- Mint Hill PD: (704) 545-1085



Note: Map produced by Research, Planning, & Analysis Bureau, CMPD (11/19/2003).



Index Offenses Reported by Division and Service Area of Occurrence										
West Service Area: 2002 - 2003										
INDEX CATEGORIES	Westover (A2)			Freedom (A3)			West Service Area			
	2002	2003	% Change	2002	2003	% Change	2002	2003	% Change	
MURDER & NON-NEGLIGENT MANSLAUGHTER	5	7	40.0%	3	9	200.0%	*	8	16	100.0%
RAPE	27	22	-18.5%	27	43	59.3%	*	54	65	20.4%
ACTUAL	24	21	-12.5%	23	37	60.9%	*	47	58	23.4%
ATTEMPTED	3	1	-66.7%	4	6	50.0%	*	7	7	0.0%
ROBBERY	262	230	-12.2%	305	272	-10.8%	*	567	502	-11.5%
ARMED	193	176	-8.8%	247	217	-12.1%	*	440	393	-10.7%
STRONG-ARM	69	54	-21.7%	58	55	-5.2%	*	127	109	-14.2%
AGGRAVATED ASSAULT	400	408	2.0%	426	508	19.2%	*	826	916	10.9%
BURGLARY	759	869	14.5%	1302	1397	7.3%	*	2061	2266	9.9%
RESIDENTIAL	489	613	25.4%	781	967	23.8%	*	1270	1580	24.4%
COMMERCIAL	270	256	-5.2%	521	430	-17.5%	*	791	686	-13.3%
LARCENY	1437	1443	0.4%	2216	2397	8.2%	*	3653	3840	5.1%
FROM AUTO	661	738	11.6%	1105	1153	4.3%	*	1766	1891	7.1%
BICYCLE	16	8	-50.0%	11	16	45.5%	*	27	24	-11.1%
SHOPLIFTING	178	144	-19.1%	248	216	-12.9%	*	426	360	-15.5%
OTHERS	582	553	-5.0%	852	1012	18.8%	*	1434	1565	9.1%
VEHICLE THEFT	330	449	36.1%	554	802	44.8%	*	884	1251	41.5%
ARSON	20	22	10.0%	45	36	-20.0%	*	65	58	-10.8%
TOTALS	3240	3450	6.5%	4878	5464	12.0%	*	8118	8914	9.8%
VIOLENT PROPERTY	694	667	-3.9%	761	832	9.3%	*	1455	1499	3.0%
	2546	2783	9.3%	4117	4632	12.5%	*	6663	7415	11.3%

Index Offenses Reported by Division and Service Area of Occurrence										
Southeast Service Area: 2002 - 2003										
INDEX CATEGORIES	Providence (B1)			Independence (B3)			Southeast Service Area			
	2002	2003	% Change	2002	2003	% Change	2002	2003	% Change	
MURDER & NON-NEGLIGENT MANSLAUGHTER	3	0	-100.0%	4	6	50.0%	*	7	6	-14.3%
RAPE	19	17	-10.5%	25	24	-4.0%	*	44	41	-6.8%
ACTUAL	18	16	-11.1%	20	21	5.0%	*	38	37	-2.6%
ATTEMPTED	2	1	-50.0%	5	3	-40.0%	*	7	4	-42.9%
ROBBERY	145	128	-11.7%	281	212	-24.6%	*	426	340	-20.2%
ARMED	114	105	-7.9%	228	175	-23.2%	*	342	280	-18.1%
STRONG-ARM	31	23	-25.8%	53	38	-28.3%	*	84	61	-27.4%
AGGRAVATED ASSAULT	203	191	-5.9%	316	314	-0.6%	*	519	505	-2.7%
BURGLARY	783	834	6.5%	1055	992	-6.0%	*	1838	1826	-0.7%
RESIDENTIAL	531	524	-1.3%	775	755	-2.6%	*	1306	1279	-2.1%
COMMERCIAL	252	310	23.0%	280	237	-15.4%	*	532	547	2.8%
LARCENY	1776	1796	1.1%	2767	2768	0.0%	*	4543	4564	0.5%
FROM AUTO	781	847	8.5%	1590	1639	3.1%	*	2371	2486	4.9%
BICYCLE	15	15	0.0%	28	40	42.9%	*	43	55	27.9%
SHOPLIFTING	269	190	-29.4%	312	234	-25.0%	*	581	424	-27.0%
OTHERS	711	744	4.6%	837	855	2.2%	*	1548	1599	3.3%
VEHICLE THEFT	225	340	51.1%	430	728	69.3%	*	655	1068	63.1%
ARSON	20	11	-45.0%	58	33	-43.1%	*	78	44	-43.6%
TOTALS	3174	3317	4.5%	4936	5077	2.9%	*	8110	8394	3.5%
VIOLENT PROPERTY	370	336	-9.2%	626	556	-11.2%	*	996	892	-10.4%
	2804	2981	6.3%	4310	4521	4.9%	*	7114	7502	5.5%

The data in the district breakdowns does not include a small number of offenses in which the location of the offense was unknown or was entered without a valid tract assignment. Districts are not equal in geographic size, demographics, zoning/development, and other factors that influence the rate of crimes committed in an area. Therefore, the comparison of districts by raw offense totals alone is not advisable.

Index Offenses Reported by Division and Service Area of Occurrence									
Northeast Service Area: 2002 - 2003									
INDEX CATEGORIES	North (C1)			Hickory Grove (C3)			Northeast Service Area		
	2002	2003	% Change	2002	2003	% Change	2002	2003	% Change
MURDER & NON-NEGLIGENT MANSLAUGHTER	6	5	-16.7%	4	8	100.0%	10	13	30.0%
RAPE	20	30	50.0%	33	33	0.0%	53	63	18.9%
ACTUAL	17	28	64.7%	30	26	-13.3%	47	54	14.9%
ATTEMPTED	3	2	-33.3%	3	7	133.3%	6	9	50.0%
ROBBERY	218	197	-9.6%	281	264	-6.0%	499	461	-7.6%
ARMED	177	159	-10.2%	231	209	-9.5%	408	368	-9.8%
STRONG-ARM	40	38	-5.0%	50	55	10.0%	90	93	3.3%
AGGRAVATED ASSAULT	351	334	-4.8%	402	418	4.0%	753	752	-0.1%
BURGLARY	1089	1295	18.9%	1176	1147	-2.5%	2265	2442	7.8%
RESIDENTIAL	741	933	25.9%	883	870	-1.5%	1624	1803	11.0%
COMMERCIAL	348	362	4.0%	293	277	-5.5%	641	639	-0.3%
LARCENY	3781	3960	4.7%	2121	2306	8.7%	5902	6266	6.2%
FROM AUTO	2075	2279	9.8%	1130	1227	8.6%	3205	3506	9.4%
BICYCLE	14	11	-21.4%	20	29	45.0%	34	40	17.6%
SHOPLIFTING	465	347	-25.4%	199	229	15.1%	664	576	-13.3%
OTHERS	1227	1323	7.8%	772	821	6.3%	1999	2144	7.3%
VEHICLE THEFT	467	778	66.6%	466	821	76.2%	933	1599	71.4%
ARSON	34	36	5.9%	51	36	-29.4%	85	72	-15.3%
TOTALS	5966	6635	11.2%	4534	5033	11.0%	10500	11668	11.1%
VIOLENT	595	566	-4.9%	720	723	0.4%	1315	1289	-2.0%
PROPERTY	5371	6069	13.0%	3814	4310	13.0%	9185	10379	13.0%

Index Offenses Reported by Division and Service Area of Occurrence									
Central Service Area: 2002 - 2003									
INDEX CATEGORIES	Central (D1)			Metro (D2)			Central Service Area		
	2002	2003	% Change	2002	2003	% Change	2002	2003	% Change
MURDER & NON-NEGLIGENT MANSLAUGHTER	3	2	-33.3%	14	6	-57.1%	17	8	-52.9%
RAPE	19	16	-15.8%	16	20	25.0%	35	36	2.9%
ACTUAL	18	15	-16.7%	13	17	30.8%	31	32	3.2%
ATTEMPTED	1	1	0.0%	3	3	0.0%	4	4	0.0%
ROBBERY	153	122	-20.3%	212	175	-17.5%	365	297	-18.6%
ARMED	87	74	-14.9%	172	137	-20.3%	259	211	-18.5%
STRONG-ARM	66	48	-27.3%	40	38	-5.0%	106	86	-18.9%
AGGRAVATED ASSAULT	173	174	0.6%	489	400	-18.2%	662	574	-13.3%
BURGLARY	339	389	14.7%	623	533	-14.4%	962	922	-4.2%
RESIDENTIAL	163	213	30.7%	420	400	-4.8%	583	613	5.1%
COMMERCIAL	176	176	0.0%	203	133	-34.5%	379	309	-18.5%
LARCENY	2079	2003	-3.7%	1033	1059	2.5%	3112	3062	-1.6%
FROM AUTO	1096	1166	6.4%	531	597	12.4%	1627	1763	8.4%
BICYCLE	14	10	-28.6%	3	14	366.7%	17	24	41.2%
SHOPLIFTING	75	72	-4.0%	62	47	-24.2%	137	119	-13.1%
OTHERS	894	755	-15.5%	437	401	-8.2%	1331	1156	-13.1%
VEHICLE THEFT	257	457	77.8%	326	400	22.7%	583	857	47.0%
ARSON	5	14	180.0%	30	19	-36.7%	35	33	-5.7%
TOTALS	3028	3177	4.9%	2743	2612	-4.8%	5771	5789	0.3%
VIOLENT	348	314	-9.8%	731	601	-17.8%	1079	915	-15.2%
PROPERTY	2680	2863	6.8%	2012	2011	0.0%	4692	4874	3.9%

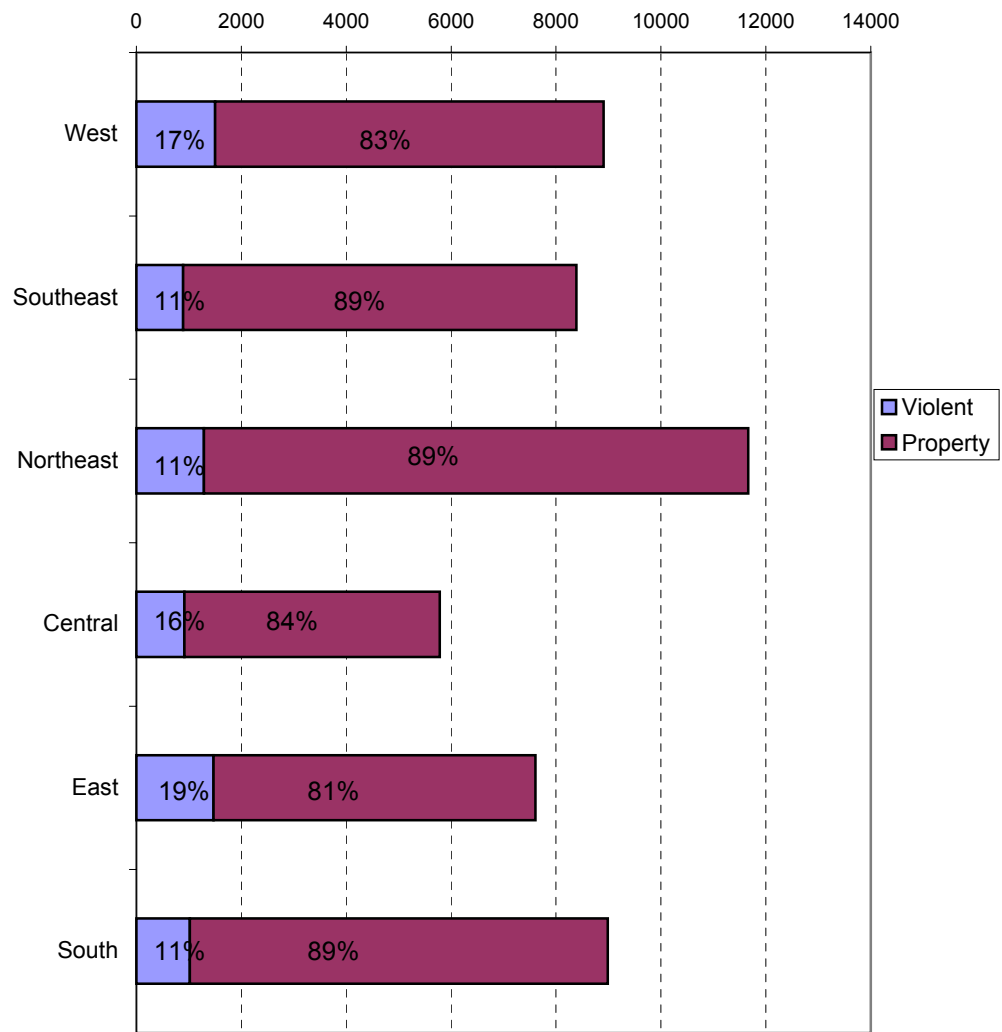
The data in the district breakdowns does not include a small number of offenses in which the location of the offense was unknown or was entered without a valid tract assignment. Districts are not equal in geographic size, demographics, zoning/development, and other factors that influence the rate of crimes committed in an area. Therefore, the comparison of raw offense totals across districts is not advisable.

Index Offenses Reported by Division and Service Area of Occurrence									
East Service Area: 2002 - 2003									
INDEX CATEGORIES	Eastway (C2)			North Tryon (D3)			East Service Area		
	2002	2003	% Change	2002	2003	% Change	2002	2003	% Change
MURDER & NON-NEGLIGENT MANSLAUGHTER	1	4	300.0%	15	8	-46.7%	16	12	-25.0%
RAPE	29	20	-31.0%	23	20	-13.0%	52	40	-23.1%
ACTUAL	25	20	-20.0%	23	20	-13.0%	48	40	-16.7%
ATTEMPTED	4	0	-100.0%	0	0	NA	4	0	-100.0%
ROBBERY	347	330	-4.9%	319	325	1.9%	666	655	-1.7%
ARMED	278	256	-7.9%	259	268	3.5%	537	524	-2.4%
STRONG-ARM	69	74	7.2%	60	57	-5.0%	129	131	1.6%
AGGRAVATED ASSAULT	378	294	-22.2%	518	470	-9.3%	896	764	-14.7%
BURGLARY	998	926	-7.2%	627	772	23.1%	1625	1698	4.5%
RESIDENTIAL	786	686	-12.7%	398	512	28.6%	1184	1198	1.2%
COMMERCIAL	212	240	13.2%	229	260	13.5%	441	500	13.4%
LARCENY	2112	2206	4.5%	1283	1186	-7.6%	3395	3392	-0.1%
FROM AUTO	851	955	12.2%	630	619	-1.7%	1481	1574	6.3%
BICYCLE	8	15	87.5%	13	11	-15.4%	21	26	23.8%
SHOPLIFTING	587	564	-3.9%	122	84	-31.1%	709	648	-8.6%
OTHERS	666	672	0.9%	518	472	-8.9%	1184	1144	-3.4%
VEHICLE THEFT	394	520	32.0%	435	509	17.0%	829	1029	24.1%
ARSON	31	17	-45.2%	28	9	-67.9%	59	26	-55.9%
TOTALS	4290	4317	0.6%	3248	3299	1.6%	7538	7616	1.0%
VIOLENT	755	648	-14.2%	875	823	-5.9%	1630	1471	-9.8%
PROPERTY	3535	3669	3.8%	2373	2476	4.3%	5908	6145	4.0%

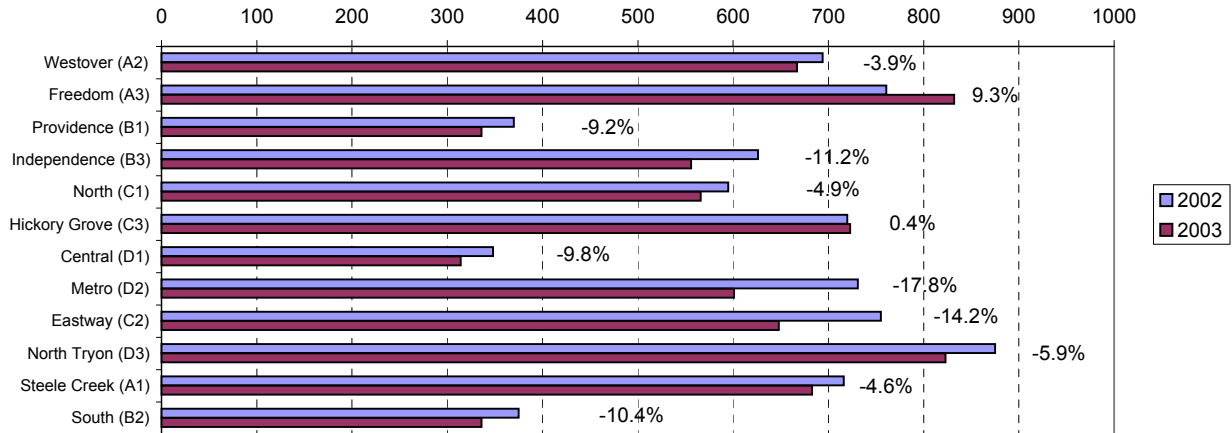
Index Offenses Reported by Division and Service Area of Occurrence									
South Service Area: 2002 - 2003									
INDEX CATEGORIES	Steele Creek (A1)			South (B2)			South Service Area		
	2002	2003	% Change	2002	2003	% Change	2002	2003	% Change
MURDER & NON-NEGLIGENT MANSLAUGHTER	7	8	14.3%	2	3	50.0%	9	11	22.2%
RAPE	34	29	-14.7%	16	21	31.3%	50	50	0.0%
ACTUAL	29	25	-13.8%	14	17	21.4%	43	42	-2.3%
ATTEMPTED	5	4	-20.0%	2	4	100.0%	7	8	14.3%
ROBBERY	229	269	17.5%	140	133	-5.0%	369	402	8.9%
ARMED	186	211	13.4%	105	101	-3.8%	291	312	7.2%
STRONG-ARM	43	48	11.6%	35	32	-8.6%	78	80	2.6%
AGGRAVATED ASSAULT	446	377	-15.5%	217	179	-17.5%	663	556	-16.1%
BURGLARY	830	881	6.1%	870	914	5.1%	1700	1795	5.6%
RESIDENTIAL	527	613	16.3%	679	720	6.0%	1206	1333	10.5%
COMMERCIAL	303	268	-11.6%	191	194	1.6%	494	462	-6.5%
LARCENY	2853	2799	-1.9%	2306	2382	3.3%	5159	5181	0.4%
FROM AUTO	1425	1336	-6.2%	1253	1317	5.1%	2678	2653	-0.9%
BICYCLE	13	19	46.2%	18	17	-5.6%	31	36	16.1%
SHOPLIFTING	467	455	-2.6%	193	170	-11.9%	660	625	-5.3%
OTHERS	948	989	4.3%	842	878	4.3%	1790	1867	4.3%
VEHICLE THEFT	463	569	22.9%	278	370	33.1%	741	939	26.7%
ARSON	36	34	-5.6%	49	24	-51.0%	85	58	-31.8%
TOTALS	4898	4966	1.4%	3878	4026	3.8%	8776	8992	2.5%
VIOLENT	716	683	-4.6%	375	336	-10.4%	1091	1019	-6.6%
PROPERTY	4182	4283	2.4%	3503	3690	5.3%	7685	7973	3.7%

The data in the district breakdowns does not include a small number of offenses in which the location of the offense was unknown or was entered without a valid tract assignment. Districts are not equal in geographic size, demographics, zoning/development, and other factors that influence the rate of crimes committed in an area. Therefore, the comparison of raw offense totals across districts is not advisable.

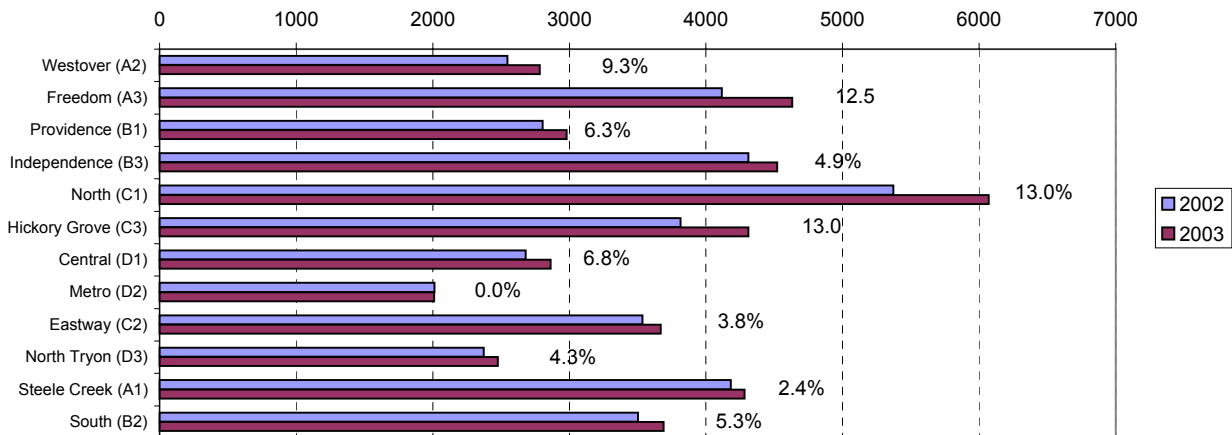
**Reported Index Offenses in 2003
by Violent vs. Property and Service Area
Charlotte-Mecklenburg Police Department: 2003**



**Violent Index Offenses Reported by Division
Charlotte-Mecklenburg Police Department: 2002-2003**



**Property Index Offenses Reported by Division
Charlotte-Mecklenburg Police Department: 2002-2003**



Note: Divisions are not directly comparable with each other based solely on raw offense totals because they are not equal in geographic size, demographics, zoning/development, and other factors that can influence the rate of crimes committed in an area.

**PART 2 AND OTHER OFFENSES REPORTED
CHARLOTTE-MECKLENBURG POLICE DEPARTMENT: 2002-2003**

Crime Categories	Number of Offenses:			Rate per Estimated 100,000 Population ¹ :			
	<u>2002</u>	<u>2003</u>	<u>% Change</u>	<u>2002</u>	<u>2003</u>	<u>% Change</u>	
				Est. Pop. 673177 ¹	Est. Pop. 674509 ¹		
NON-AGGRAVATED ASSAULT	10747	11204	4.3% *	1596.5	1661.1	4.0%	
FORGERY/COUNTERFIET	635	567	-10.7% *	94.3	84.1	-10.9%	
FRAUD	1584	2347	48.2% *	235.3	348.0	47.9%	
EMBEZZLEMENT	478	418	-12.6% *	71.0	62.0	-12.7%	
VANDALISM/DAMAGE TO PROPERTY	7589	7517	-0.9% *	1127.3	1114.4	-1.1%	
SEX OFFENSES	556	470	-15.5% *	82.6	69.7	-15.6%	
OFFENSES AGAINST THE FAMILY	162	127	-21.6% *	24.1	18.8	-21.8%	
OTHER PART 2 OFFENSES ²	5261	6183	17.5% *	781.5	916.7	17.3%	
TOTAL PART 2 OFFENSES ²	27012	28833	6.7% *	4012.6	4274.7	6.5%	

**NON-CRIMINAL INCIDENT REPORTS
CHARLOTTE-MECKLENBURG POLICE DEPARTMENT: 2002-2003**

Incident Categories	Number of Offenses:			Rate per Estimated 100,000 Population ¹ :			
	<u>2002</u>	<u>2003</u>	<u>% Change</u>	<u>2002</u>	<u>2003</u>	<u>% Change</u>	
				Est. Pop. 673177 ¹	Est. Pop. 674509 ¹		
MISSING PERSONS (16 & OLDER)	1393	1633	17.2% *	206.9	242.1	17.0%	
MISSING PERSONS (UNDER 16)	1544	1802	16.7% *	229.4	267.2	16.5%	
SUICIDE/ATTEMPTED SUICIDE	436	446	2.3% *	64.8	66.1	2.1%	
SUDDEN OR ACCIDENTAL DEATH	455	485	6.6% *	67.6	71.9	6.4%	
LOST OR MISSING PROPERTY	230	130	-43.5% *	34.2	19.3	-43.6%	
OTHER INCIDENTS ³	1713	893	-47.9% *	254.5	132.4	-48.0%	
TOTAL	5771	5389	-6.6% *	857.3	799.0	-6.8%	

¹Population estimates for 2002 and 2003 have been adjusted to use the Planning Commission's annual estimates. The annual population for 2003 does not include Mint Hill, although the crime totals do include crimes occurring in Mint Hill during the first half of the year prior to July 1, 2003.

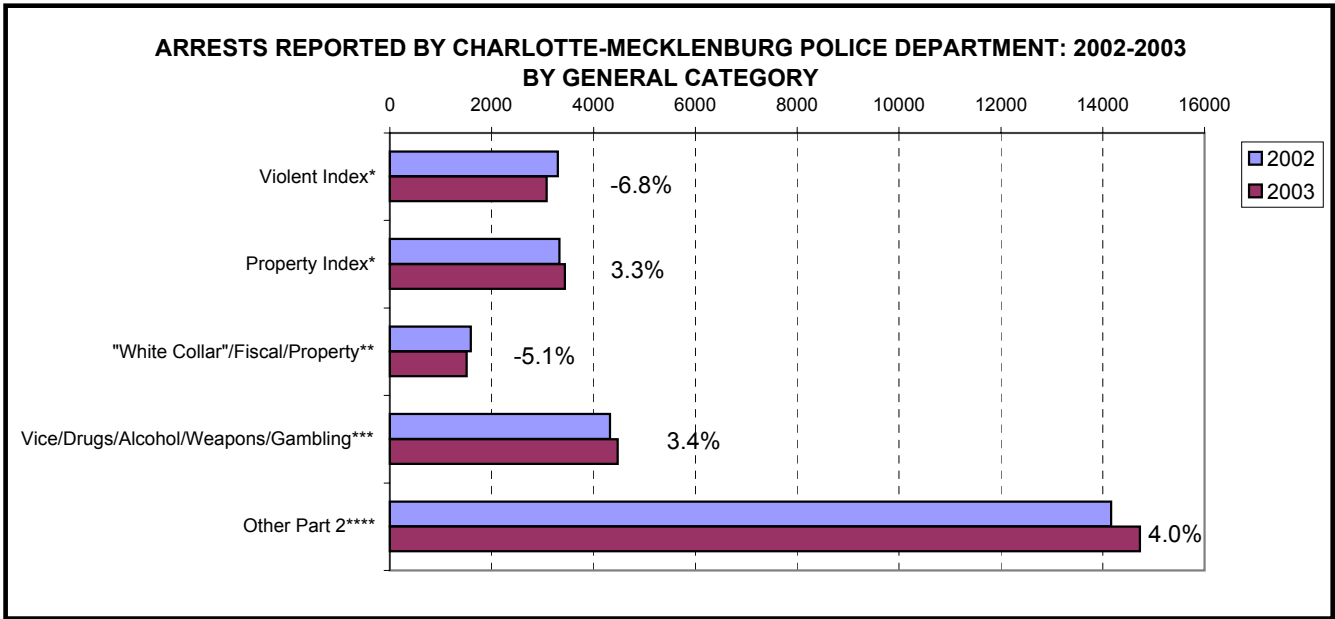
²This category includes other criminal offenses such as trespassing, disorderly conduct, violations of miscellaneous state statutes or city ordinances, or reports on crimes against society such as vice, drugs, and weapons violations which are generally counted through arrest statistics.

³Reports in this category include non-criminal incidents such as public accidents, non-criminal damage to property, or other events that did not violate a law but required additional documentation or investigation.

**Arrests Reported by Charlotte-Mecklenburg Police Department
2002-2003**

Crime Category¹	Adults: Age 18 & Older			Juveniles: Age under 18			Total: All Ages		
	2002	2003	% Change	2002	2003	% Change	2002	2003	% Change
Murder/Non-Negligent Manslaughter	50	45	-10.0%	3	7	133.3%	53	52	-1.9%
Rape	42	33	-21.4%	4	6	50.0%	46	39	-15.2%
Robbery	351	299	-14.8%	138	120	-13.0%	489	419	-14.3%
Aggravated Assault	2393	2198	-8.1%	321	370	15.3%	2714	2568	-5.4%
TOTAL VIOLENT INDEX	2836	2575	-9.2%	466	503	7.9%	3302	3078	-6.8%
Burglary	483	492	1.9%	263	226	-14.1%	746	718	-3.8%
Larceny	1582	1510	-4.6%	639	648	1.4%	2221	2158	-2.8%
Vehicle Theft	121	147	21.5%	175	365	108.6%	296	512	73.0%
Arson	22	21	-4.5%	44	30	-31.8%	66	51	-22.7%
TOTAL PROPERTY INDEX	2208	2170	-1.7%	1121	1269	13.2%	3329	3439	3.3%
TOTAL INDEX	5044	4745	-5.9%	1587	1772	11.7%	6631	6517	-1.7%
Negligent & Vehicular Manslaughter	5	1	-80.0%	0	0	NA	5	1	-80.0%
Non-Aggravated Assault	1741	1718	-1.3%	766	914	19.3%	2507	2632	5.0%
Forgery/Counterfeit	136	132	-2.9%	1	4	300.0%	137	136	-0.7%
Fraud	667	575	-13.8%	10	8	-20.0%	677	583	-13.9%
Embezzlement	123	110	-10.6%	14	4	-71.4%	137	114	-16.8%
Stolen Property	511	524	2.5%	127	151	18.9%	638	675	5.8%
Vandalism	239	239	0.0%	177	204	15.3%	416	443	6.5%
Weapons	481	482	0.2%	69	72	4.3%	550	554	0.7%
Prostitution	252	339	34.5%	5	3	-40.0%	257	342	33.1%
Sex Offenses	275	224	-18.5%	44	41	-6.8%	319	265	-16.9%
Drugs	2950	3054	3.5%	289	297	2.8%	3239	3351	3.5%
Gambling	3	26	766.7%	0	0	NA	3	26	766.7%
Offenses against the Family	26	11	-57.7%	0	0	NA	26	11	-57.7%
Driving While Alcohol/Drug Impaired	2336	2115	-9.5%	17	10	-41.2%	2353	2125	-9.7%
Liquor Violation	262	185	-29.4%	13	14	7.7%	275	199	-27.6%
Disorderly Conduct	536	585	9.1%	187	301	61.0%	723	886	22.5%
Other Arrests (Non-Traffic)	7107	7572	6.5%	708	798	12.7%	7815	8370	7.1%
TOTAL PART 2	17650	17892	1.4%	2427	2821	16.2%	20077	20713	3.2%
TOTAL ARRESTS	22694	22637	-0.3%	4014	4593	14.4%	26708	27230	2.0%

¹An arrest can have multiple charges for different state, local, or federal statutes and ordinances. For UCR counting purposes, each arrest is classified by the highest type of charge on the UCR hierarchy. The totals in this chart reflect the number of arrest events, not the number of charges on each arrest.

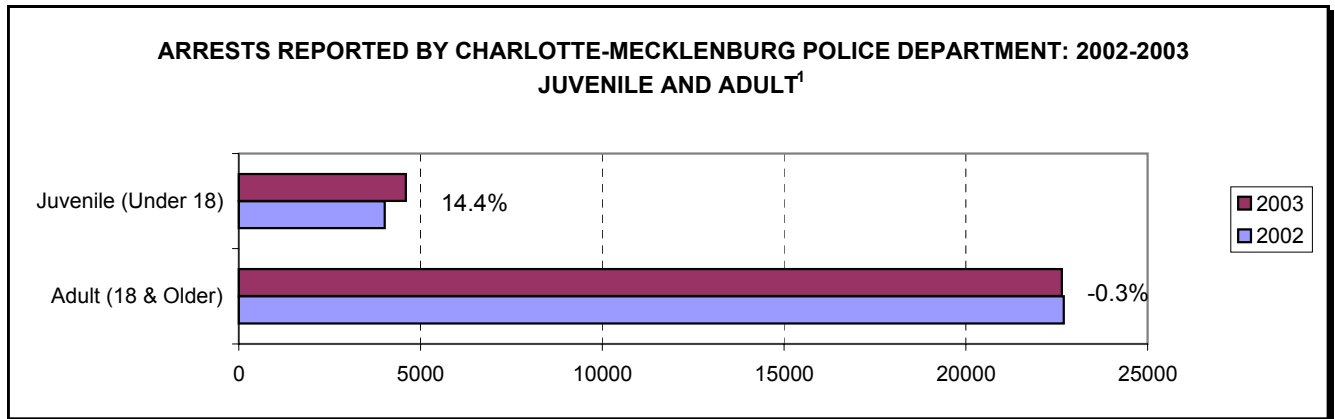


*Violent Index includes murder/non-negligent manslaughter, rape, robbery, and aggravated assault; property Index includes burglary, larceny, vehicle theft, and arson.

**"White Collar"/Fiscal/Property includes forgery, counterfiet, fraud, embezzlement, possession of stolen property.

***Vice/Drugs/Alcohol/Weapons/Gambling includes prostitution, gambling , liquor violations (except DUI), drug violations, and concealed weapons

****Other Part 2 includes, non-aggravated (simple) assault, criminal damage to property, sex offenses (excluding forcible rape), disorderly conduct, DUI, and all other non-traffic arrests.

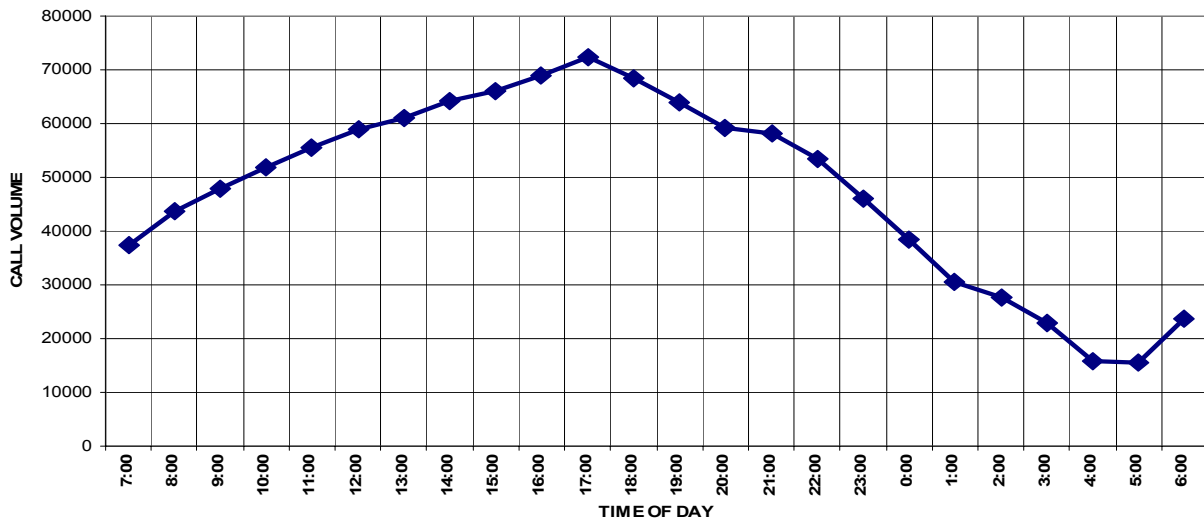


¹ Under Uniform Crime Reporting procedures, juvenile arrests include all arrests/custodies involving persons under 18 years of age.

**Communications Division: 911 Calls Received: 2003
Charlotte-Mecklenburg Police Department**

Total 911 Emergency Calls Answered in 2003: 1,024,739

CALL VOLUME BY HOUR FOR 2003



**CITIZEN-INITIATED CALLS FOR SERVICE¹ BY TYPE
CHARLOTTE-MECKLENBURG POLICE DEPARTMENT: 2003**

<u>Type of Call²</u>	<u>Calls</u>
ABC RELATED	2524
ACCIDENT	34798
ALARM	41501
ANIMAL CONTROL ³	724
ASSAULT	4942
ASSAULT WITH DEADLY WEAPON	1390
ASSIST OTHER AGENCY	7070
BOMB THREAT	205
BREAK/ENTER	15639
COMMUNICATING THREATS	3680
COUNTY SECURITY ³	24
CRIMINAL INTELLIGENCE	10
DAMAGE TO PROPERTY	7644
DEATH	412
DISTURBANCE	24125
DOMESTIC DISTURBANCE/INCIDENT	35258
DRUG RELATED	4804
EXTORTION/BLACKMAIL	5
FIGHT	3048
FIRE CASE	162
FRAUD/FORGERY	3564
GAMBLING	32
HARASSMENT	1751
HIT AND RUN	6982
JUVENILE RELATED	1507
KIDNAPPING	168
LAKE ENFORCEMENT	79
LARCENY	29180
LOITERING	3532
MAJOR INCIDENT	42
MISSING PERSON	5616
NOISE COMPLAINT	13154
OFFENSE AGAINST FAMILY	17
OFFICER CALLED IN	463
OVERDOSE	270
PORNOGRAPHY	15
PROPERTY	2471
PROSTITUTION	764
PUBLIC SERVICE	14882
QUALITY OF LIFE	1259
ROBBERY	2634
SEX CRIME	1089
SUICIDE	1179
SUSPICIOUS PERSON	17924
TRAFFIC RELATED	10324
TRESPASS	3649
VEHICLE RELATED	30108
VIOLENT CRIMES TASK FORCE	1
WARRANT RELATED	4028
WEAPON RELATED	6759
ZONE CHECK	44
911 HANG UP / CALLBACK	14239
TOTAL	365691

¹These totals exclude duplicate and cancelled calls for service; they include calls handled by Non-Emergency Police Services (NEPS) as well as by field officers, detectives and other CMPD staff.

²The type of call is entered by Communications based on the 911 call unless updated by an officer assigned to respond.

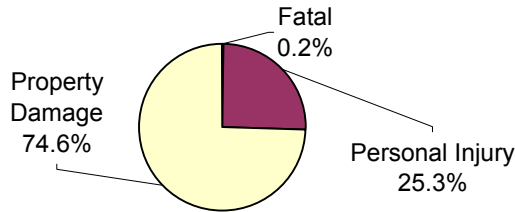
³In this summary, calls to Animal Control or Mecklenburg County Security include only those calls that involved the dispatching of other C-MPD officers, detectives, or staff. See the "Animal Control Division Summary" on page 34 for that division's Call for Service data

**Traffic Collision Reports
Charlotte-Mecklenburg Police Department: 2002-2003**

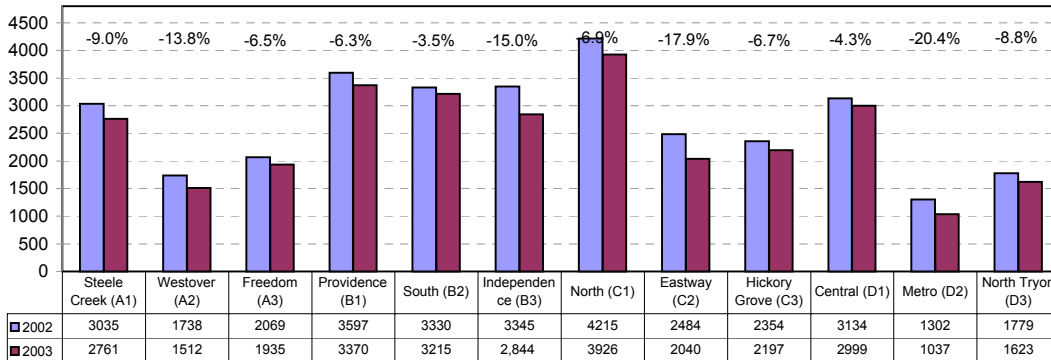
<u>Type</u>	<u>2002</u>	<u>2003</u>	<u>% Change</u>
Fatal Collisions	63	54	-14.3%
Vehicle Occupants Killed	48	50	4.2%
Pedestrians Killed	16	8	-50.0%
Personal Injury Collisions	7831	7438	-5.1%
Property Damage Collisions	24533	22114	-9.9%
Total Collisions	32427	29606	-8.7%

* The number of fatal collisions and the number of persons killed in those incidents is taken from the HITS file. Their records are updated for deaths that occur after the initial report is filed.

**Traffic Collision Reports by Type
Charlotte-Mecklenburg Police Department: 2003**



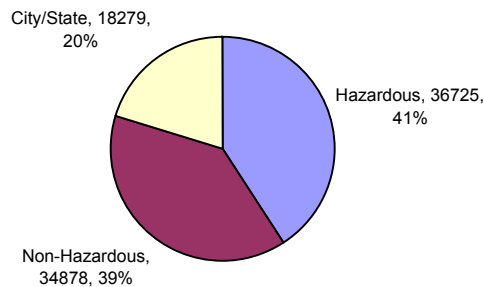
**Traffic Collision Reports by Location (Division)
Charlotte-Mecklenburg Police Department: 2002 -2003**



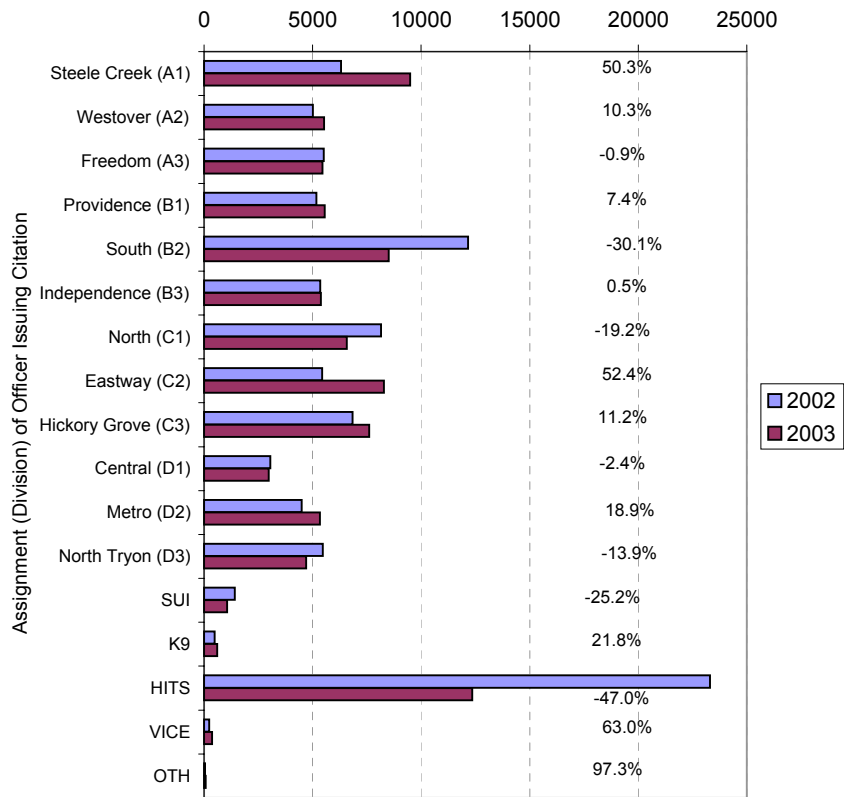
**CITATIONS ISSUED BY THE CHARLOTTE-MECKLENBURG POLICE DEPARTMENT
2002-2003**

<u>TYPE OF CITATION</u>	<u>2002</u>	<u>2003</u>	<u>% CHANGE</u>
SPEEDING	36253	29441 *	-18.8%
IMPROPER TURN	1644	1378 *	-16.2%
RED LIGHT	1955	1676 *	-14.3%
STOP SIGN	1718	1906 *	10.9%
FAILURE TO YIELD RIGHT-OF-WAY	192	170 *	-11.5%
FOLLOWING TOO CLOSE	249	156 *	-37.3%
ONE WAY STREET	65	54 *	-16.9%
IMPROPER PASSING	401	272 *	-32.2%
UNSAFE MOVEMENTS	725	552 *	-23.9%
RECKLESS DRIVING	806	671 *	-16.7%
OTHERS-HAZARDOUS	456	342 *	-25.0%
WRONG SIDE OF ROAD	125	107 *	-14.4%
TOTAL HAZARDOUS CITATIONS	44589	36725 *	-17.6%
NO DRIVERS LICENSE	8395	8451 *	0.7%
IMPROPER TAGS,NO INS.,EXP.REG	17243	16931 *	-1.8%
DRIVING WHILE LICENSE REVOKED	8046	8772 *	9.0%
DEFECTIVE EQUIPMENT VIOLATION	112	77 *	-31.3%
HIT AND RUN	353	274 *	-22.4%
TRUCK ORDINANCE	3	1 *	-66.7%
IMPROPER LIGHTS	81	98 *	21.0%
OTHER NON-HAZZARDOUS	523	274 *	-47.6%
TOTAL NON-HAZARDOUS CITATIONS	34756	34878 *	0.4%
SMOKING ORDINANCE-COLISEUM	0	2 *	NA
SMOKING ORDINANCE-OTHER LOCATION	2	0 *	-100.0%
NOISE VIOLATION	90	41 *	-54.4%
LITTERING	166	88 *	-47.0%
TAXICAB VIOLATIONS	10	2 *	-80.0%
OTHER CITY ORDINANCES	1303	2871 *	120.3%
TOTAL CITY ORDINANCE CITATIONS	1571	3004 *	91.2%
DRIVING WHILE IMPAIRED	2837	2139 *	-24.6%
DEATH BY VEHICLE	26	50 *	92.3%
CHILD RESTRAINT	743	704 *	-5.2%
FAILURE TO USE SEAT BELT	7845	7214 *	-8.0%
SIMPLE ASSAULT	54	49 *	-9.3%
WEAPONS VIOLATION	106	65 *	-38.7%
SIMPLE POSESSION MARIJUANA	1205	1382 *	14.7%
DRUG PARAPHERNALIA	579	593 *	2.4%
LIGUOR LAW VIOLATION	2517	2032 *	-19.3%
OTHER STATE STATUTE CITATIONS	1608	1047 *	-34.9%
TOTAL STATE STATUTE CITATIONS	17520	15275 *	-12.8%
TOTAL CITATIONS	98436	89882 *	-8.7%

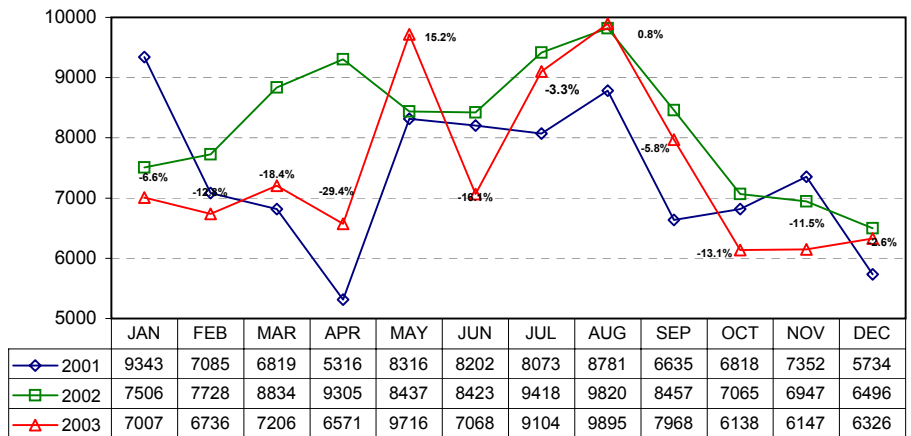
**Citation Enforcement by Type
Charlotte-Mecklenburg Police Department: 2003**



**Citation Enforcement by Issuing Division
Charlotte-Mecklenburg Police Department: 2002 - 2003**



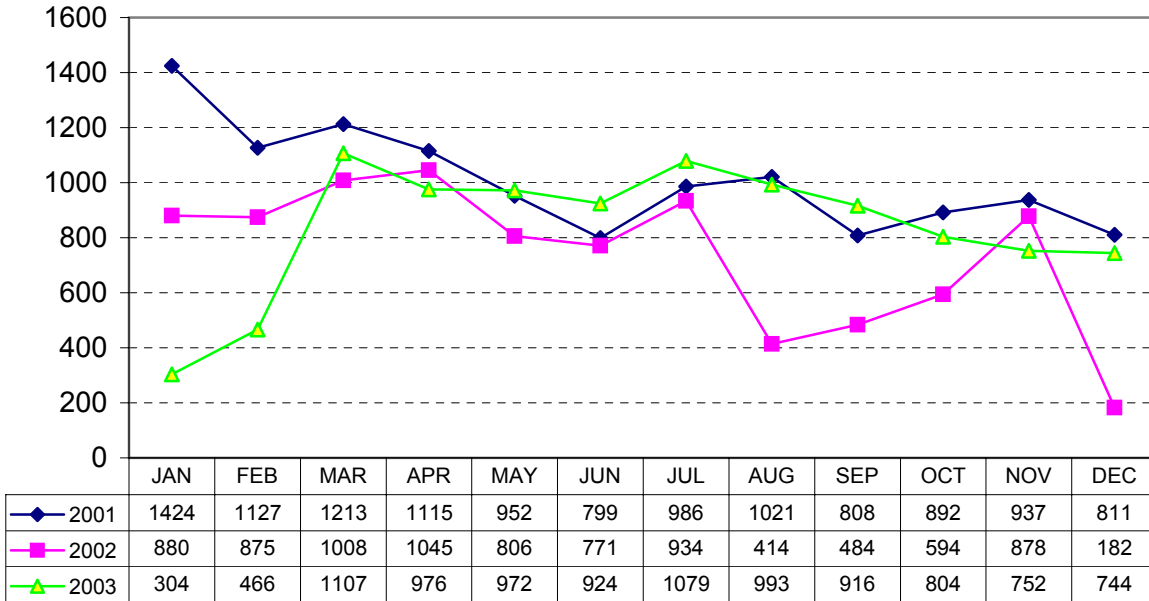
**Citation Enforcement¹ by Month
Charlotte-Mecklenburg Police Department: 2001-2003**



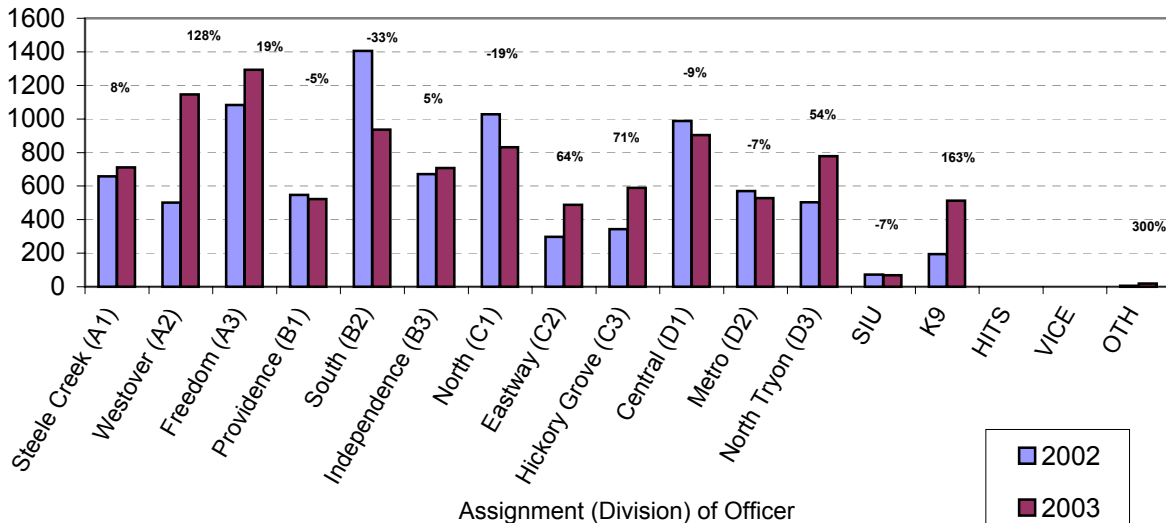
(Percentages show percent change in 2003 from 2002.)

¹Totals include citations for hazardous and non-hazardous traffic violations and for other city and state ordinances/statutes.

**Warning Tickets Issued by Month
Charlotte-Mecklenburg Police Department: 2001-2003**



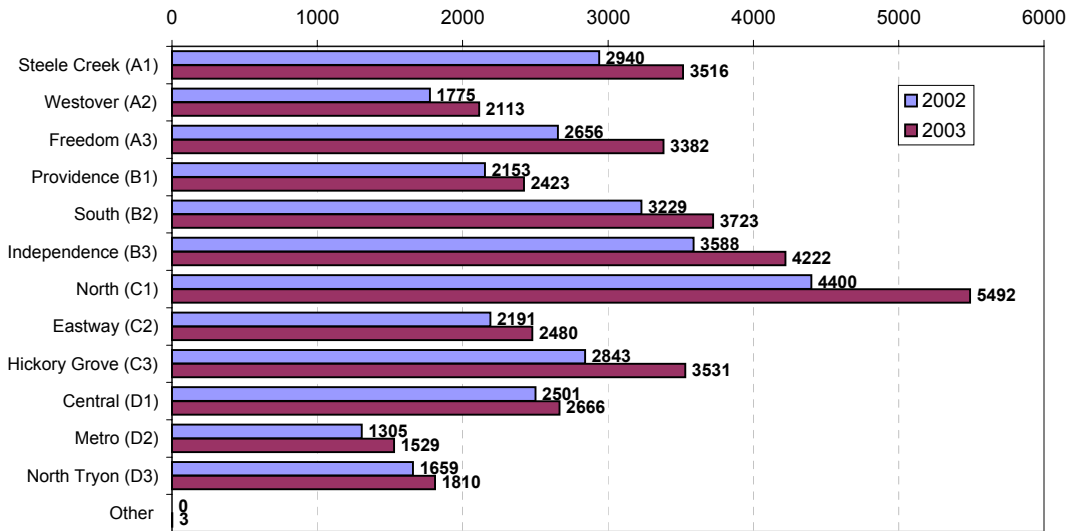
**Warning Tickets Issued by Division
Charlotte-Mecklenburg Police Department: 2002 - 2003**



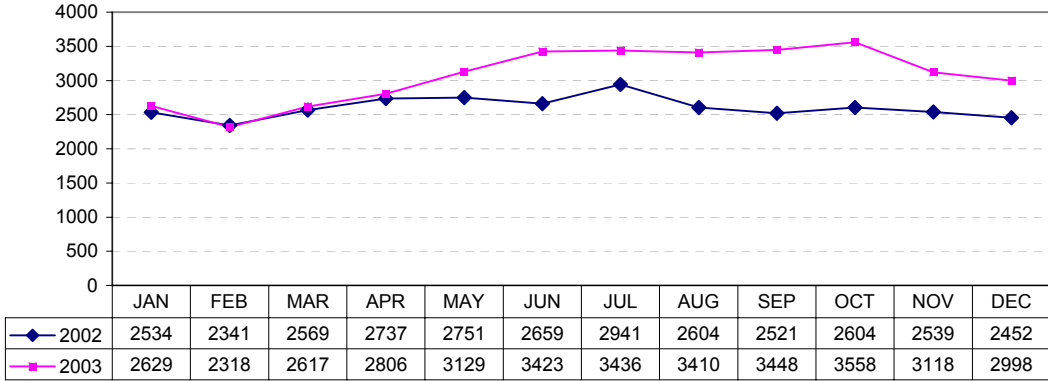
Warning Tickets Issued by Charlotte-Mecklenburg Police Department

	<u>2002</u>	<u>2003</u>	<u>% Change</u>
Total Issued	8871	10037	13.1%

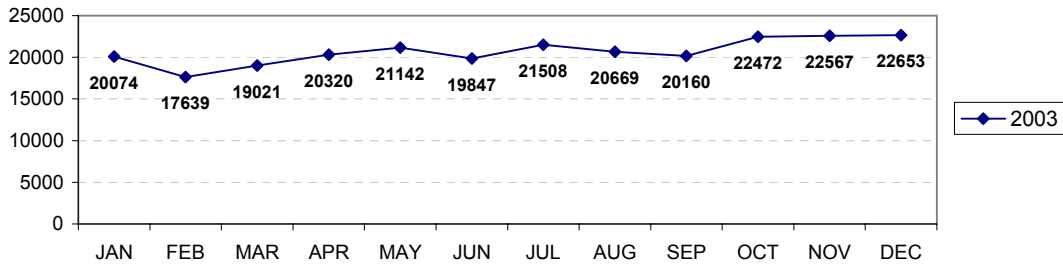
**Incident Reports by Non-Emergency Police Services (NEPS) by Division
Charlotte Mecklenburg Police Department: 2002-2003**



**Incident Reports by Non-Emergency Police Services (NEPS) by Month
Charlotte-Mecklenburg Police Department: 2002-2003**



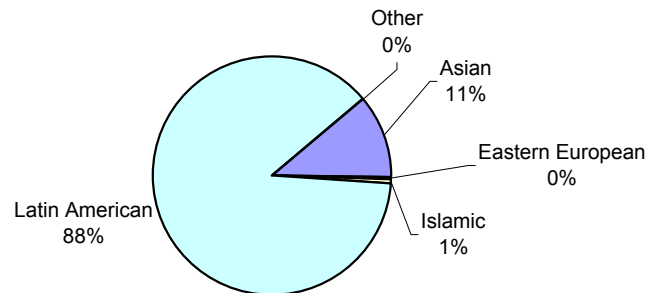
**Calls Received in NEPS by Month
Charlotte-Mecklenburg Police Department: 2003**



**International Relations Unit: Initiatives and Activities by Type and Community Served
Charlotte-Mecklenburg Police Department: 2002-2003**

<u>Community Served</u>	<u>Problem Solving</u>	<u>Interdepartment Assistance</u>	<u>Community Meeting</u>	<u>Recruiting Initiative</u>	<u>Education & Training</u>	<u>Promotion & Partnerships</u>	<u>Interpreting</u>	<u>Other</u>	<u>Total</u>
2002									
Asian	16	4	4	1	0	7	0	0	32
Eastern European	1	0	1	0	0	0	0	0	2
Islamic	0	0	0	0	0	1	0	0	1
Latin American	16	17	6	0	5	15	8	0	67
Other	18	35	12	3	24	19	1	0	112
Total	51	56	23	4	29	42	9	0	214
2003									
Asian	20	10	8	4	9	12	40	0	103
Eastern European	1	0	0	0	0	0	0	0	1
Islamic	6	0	0	0	0	0	0	0	6
Latin American	29	226	41	17	31	22	426	0	792
Other	0	0	0	0	0	0	0	0	0
Total	56	236	49	21	40	34	466	0	902

**International Relations Unit Activities by Community Served
Charlotte-Mecklenburg Police Department: 2003**



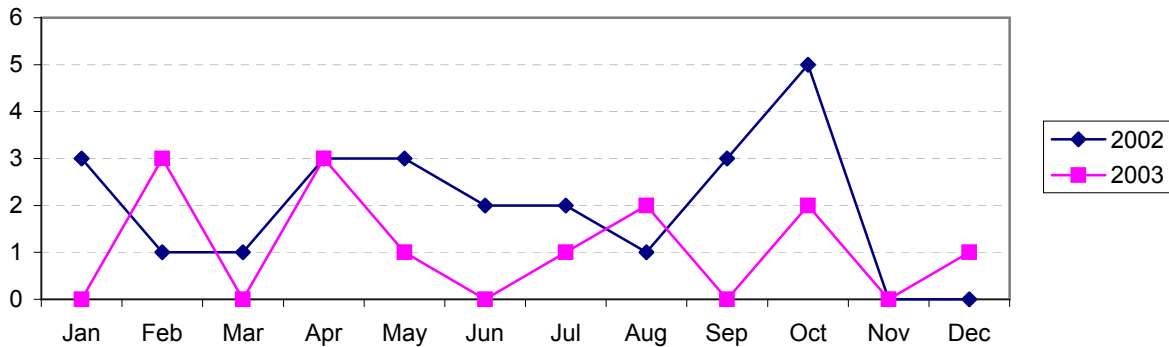
Hostage / Crisis Negotiation Responses : 2002-2003
Charlotte-Mecklenburg Police Department

Responses per Division:	<u>2002</u>	<u>2003</u>
Steele Creek (A1)	3	2
Westover (A2)	2	1
Freedom (A3)	2	4
Providence (B1)	3	0
South (B2)	2	0
Independence (B3)	0	1
North (C1)	3	0
Eastway (C2)	1	2
Hickory Grove (C3)	1	0
Central (D1)	3	0
Metro (D2)	2	0
North Tryon (D3)	1	1
Other	1	2
Total	24	13

Responses by Type¹:	<u>2002</u>	<u>2003</u>
Barricade	10	9
Hostage	3	2
Attempted Suicide	14	1
Suicide	2	0
Warrant-Arrest	1	1
Warrant-Search	0	0
Other	0	1
Classes Institute	4	2
Total	34	16

¹Each incident may involve more than one type of response.

Hostage Negotiation Responses by Month: 2002-2003
Charlotte-Mecklenburg Police Department



SWAT Deployments: 2002-2003
Charlotte-Mecklenburg Police Department

Deployments by Division:

	<u>2002</u>	<u>2003</u>
Steele Creek (A1)	5	4
Westover (A2)	2	4
Freedom (A3)	3	6
Providence (B1)	2	0
South (B2)	3	0
Independence (B3)	0	2
North (C1)	4	3
Eastway (C2)	1	2
Hickory Grove (C3)	3	1
Central (D1)	2	0
Metro (D2)	1	1
North Tryon (D3)	0	3

Deployments by Type:

	<u>2002</u>	<u>2003</u>
Barricaded Subjects	13	9
High Risk Warrants	4	15
Hostage Taking	3	2
Dignitary Protections	3	0
Search & Research	1	1
Surveillance	1	2

SWAT Training Hours: 2002-2003
Charlotte-Mecklenburg Police Department

Training by Activity:

	<u>Hours in 2002</u>	<u>Hours in 2003</u>
Firearms Training	94	96
Sniper Training	96	96
Granadier Training	24	32
Tactical Training other than firearms	104	112

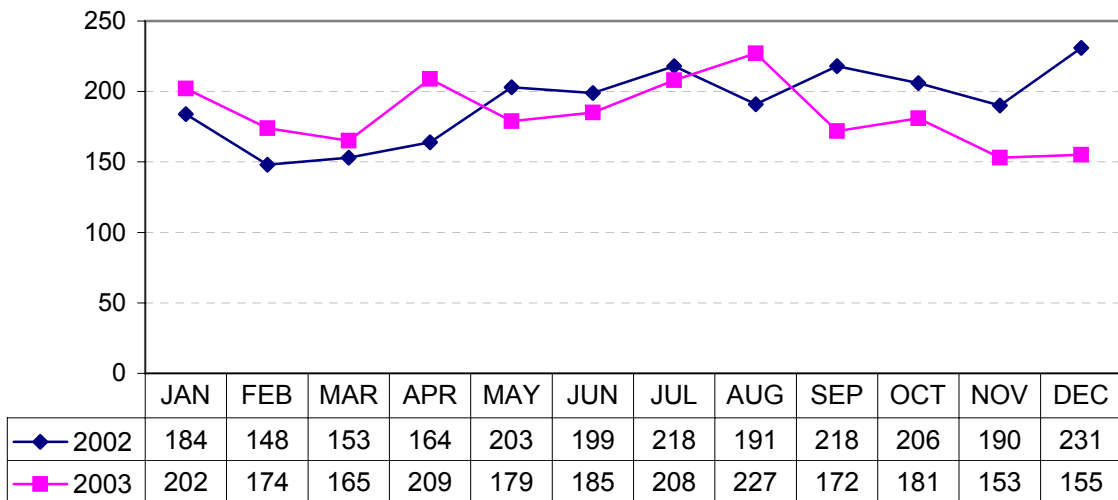
Training Conducted by SWAT:

Rapid Emergency Deployment and High Risk Warrant training.	24	73
High Risk and Vehicle takedowns for Vice and Narcotics Detectives	16	16

K-9 Unit Activities Summary: 2002-2003
Charlotte-Mecklenburg Police Department

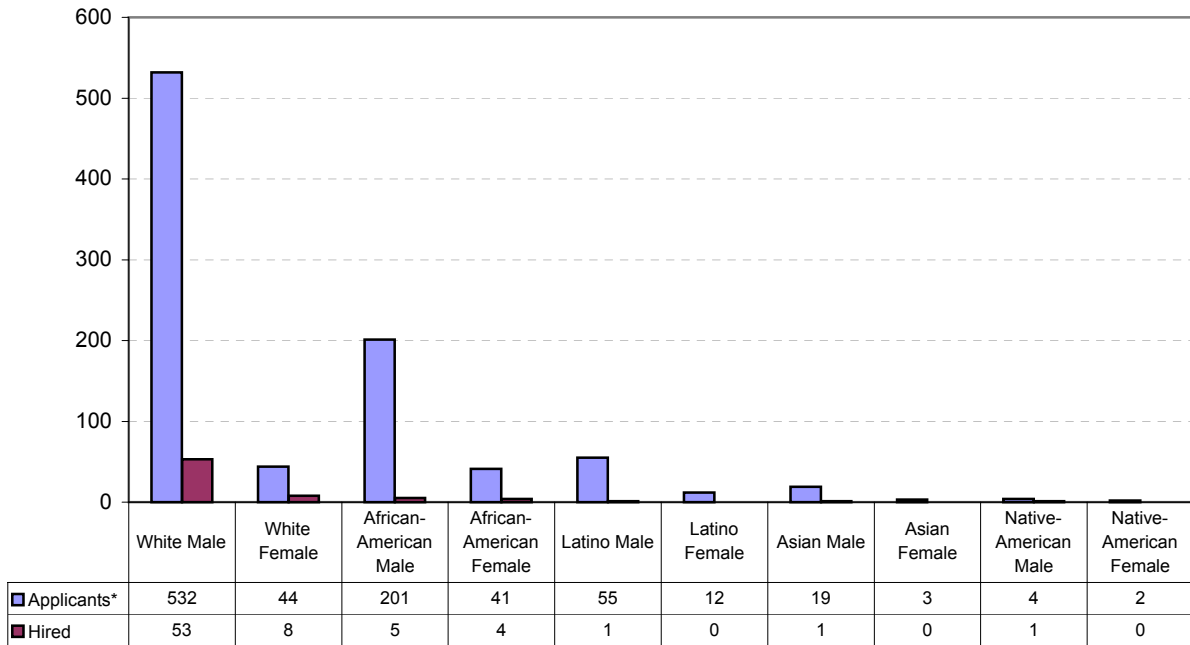
K-9 Tasks:	2002	2003
Assist	135	174
Tracks	801	819
Area Search	36	26
Building Search	278	250
Missing Persons	81	64
Missing Persons Located	13	6
Bomb Calls	28	49
Suspects Located	173	210
Drugs Calls	180	218
Drugs Located	28	31
Evidence Located	76	98
K-9 Demonstrations:	2002	2003
Total	61	44

K-9 Unit Calls by Month
Charlotte-Mecklenburg Police Department: 2002-2003

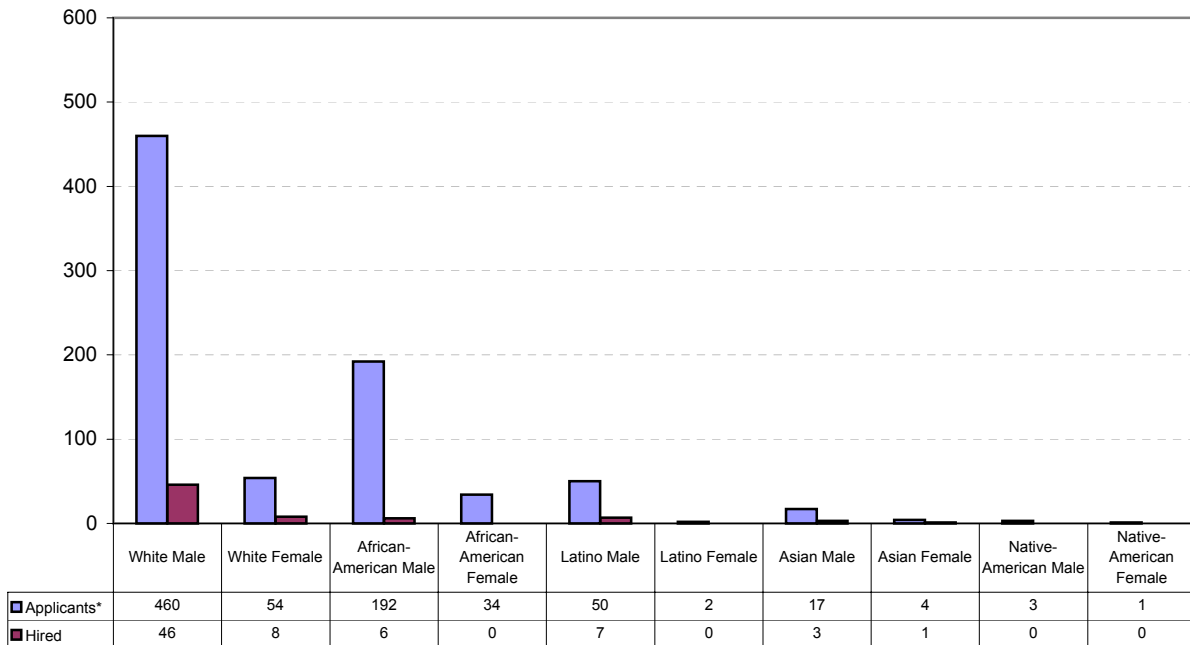


Total Calls:	
2002	2305
2003	2210

**Recruiting Division: Applicants Processed and Hired
Charlotte-Mecklenburg Police Department: 2002**



**Recruiting Division: Applicants Processed and Hired
Charlotte-Mecklenburg Police Department: 2003**

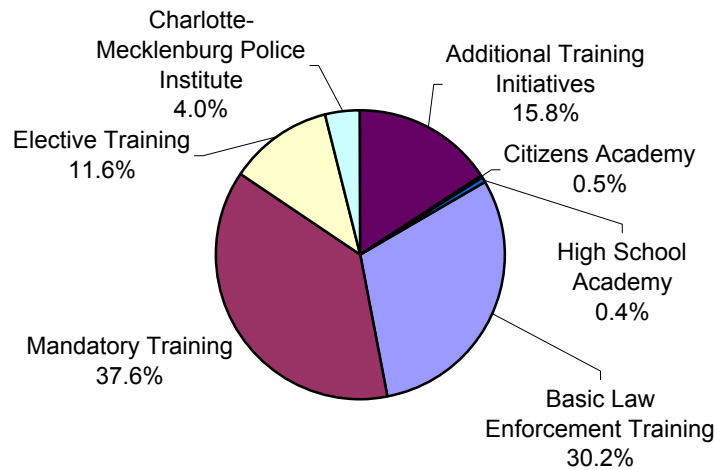


*The number of applicants processed includes the number hired.

**Charlotte-Mecklenburg Police Training Academy
Classroom Hours by Type of Training: 2002-2003**

<u>Type of Training:</u>	<u>Classroom Hours:</u>	
	<u>2002</u>	<u>2003</u>
Basic Law Enforcement Training	1872.0	2868.0
Mandatory Training	9006.0	3572.5
Elective Training	608.0	1099.0
Charlotte-Mecklenburg Police Institute	512.0	380.0
Additional Training Initiatives	339.0	1499.0
Citizens Academy	45.0	45.0
High School Academy	40.0	40.0
Total	12422.0	9503.5

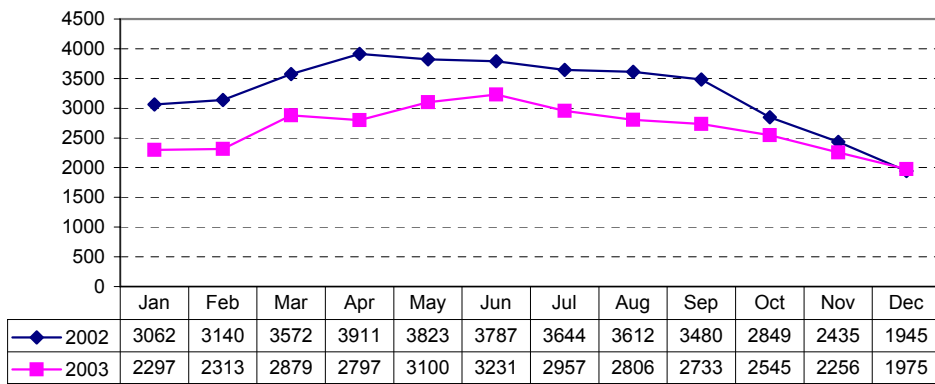
**Training Academy Classroom Hours by Type
Charlotte-Mecklenburg Police Department: 2003**



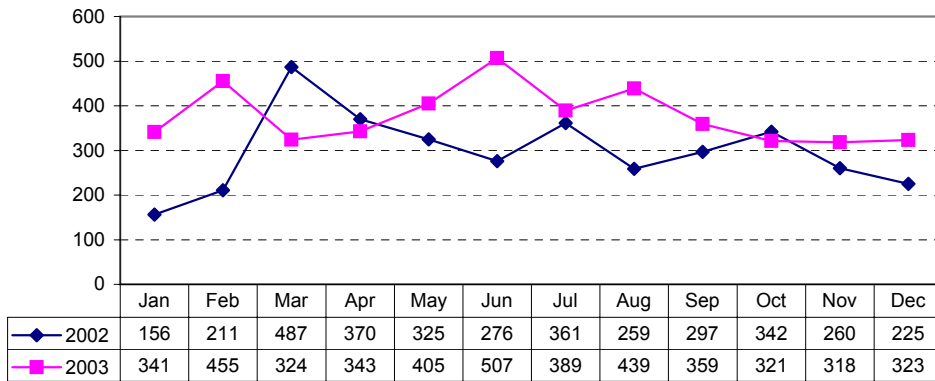
**Animal Control Division Summary
Charlotte-Mecklenburg Police Department: 2002-2003**

Activities:	2002	2003
Calls for Service	39188	31889
Citations Issued	3569	4524
Animal License Tags Issued	34558	33290
Animal License Cards Sent Out	48581	50873
Status of Animals:		
Total Incoming	20254	20968
Total Outgoing	20239	20742
Total Adopted	2994	3098
Total Reclaimed	2303	2099
Total Euthanized	14095	14807

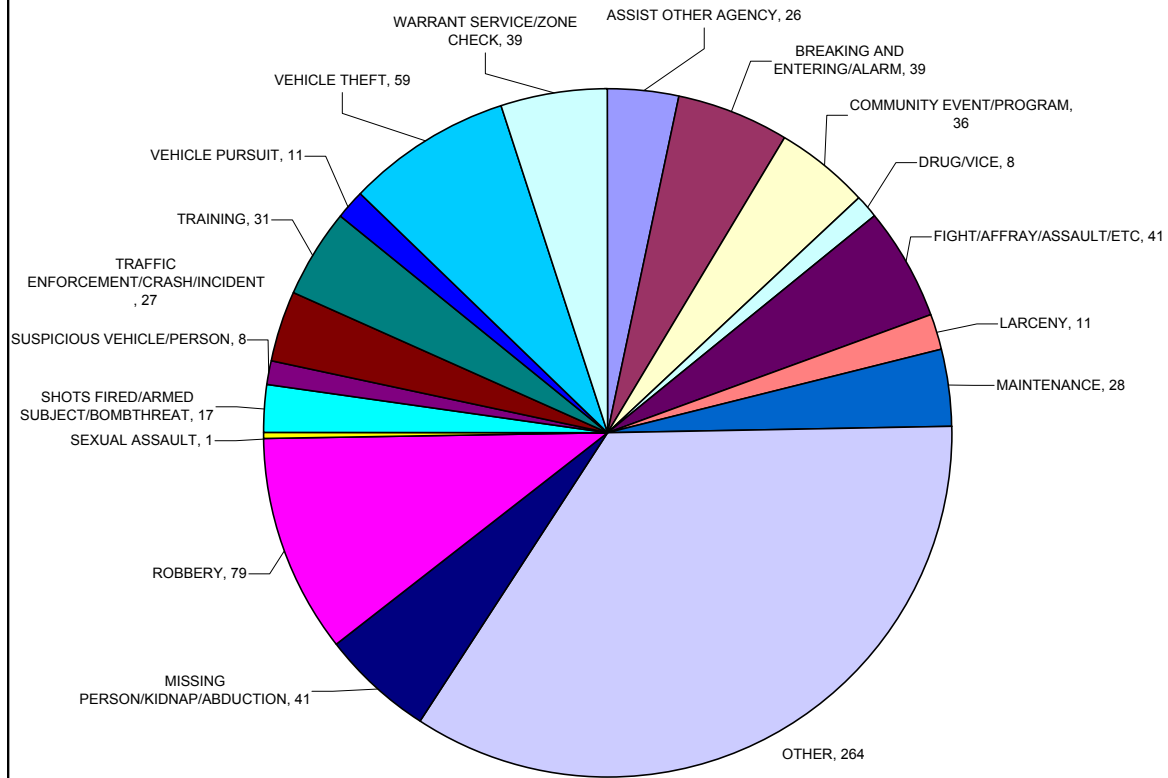
**Animal Control Division Calls by Month
Charlotte-Mecklenburg Police Department: 2002-2003**



**Animal Control Division Citations Issued by Month
Charlotte-Mecklenburg Police Department: 2002-2003**



Aviation Unit Activities/Calls by Type: 2003 Charlotte-Mecklenburg Police Department



Total Calls	766
Total Assists	177
Total Direct Arrests	25
Total Hours Flown	658.6

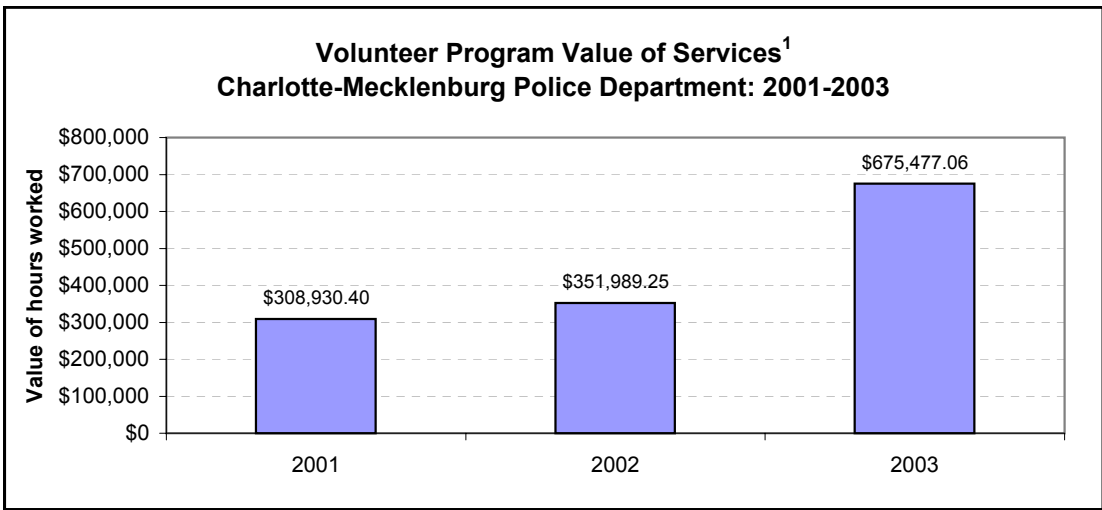
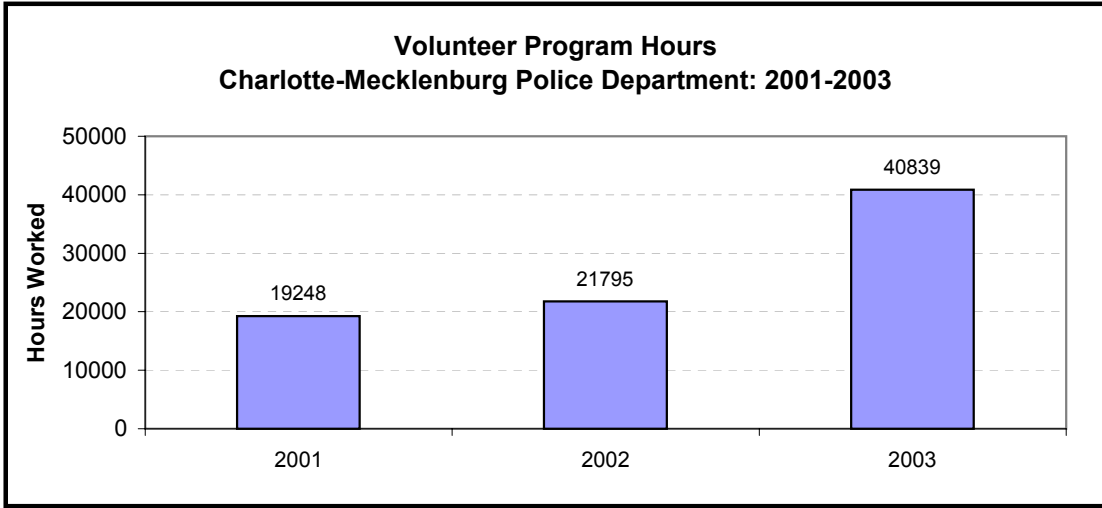
**Civil Emergency Unit Activities: 2003
Charlotte-Mecklenburg Police Department**

Event Activations/Standby Notifications	7
Training Sessions	19
Training Hours	168
4th Unit Established	300 Members

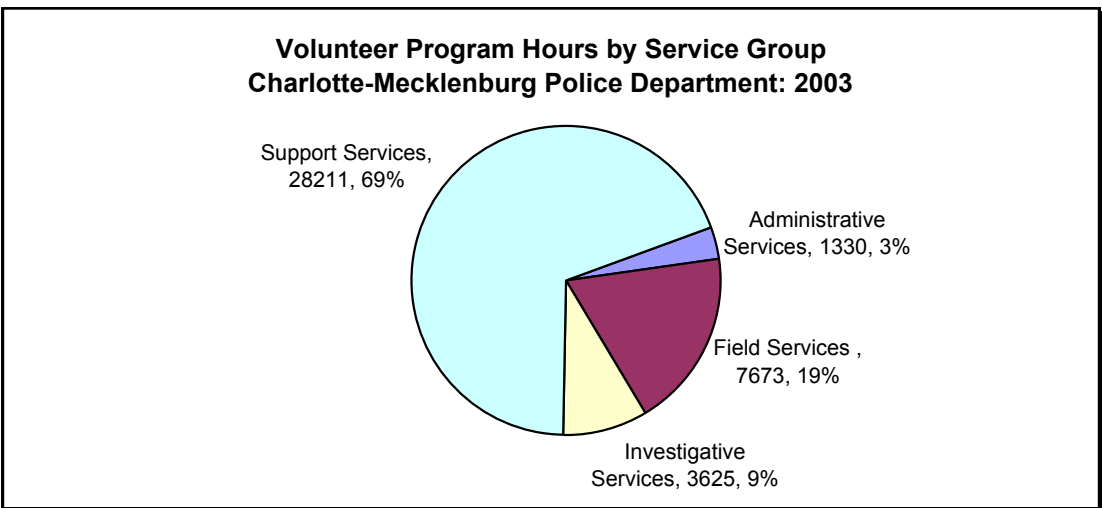
**Intelligence Division Annual Summary: 2003
Charlotte-Mecklenburg Police Department**

Crime Stoppers Program Activity: 2003	
<u>Crime Stoppers</u>	
Calls made to Crime Stoppers	1,584
Arrests made through tips	193
Cases cleared through tips	423
Property recovered through tips	\$57,848.00
Rewards approved for tipsters	\$21,460.00
<u>Campus Crime Stoppers (2002-2003 School Year)</u>	
Campus Crime Stoppers tips	61
Arrests based on Campus Crime Stoppers tips	58
Cases cleared based on Campus Crime Stoppers tips	78
Property recovered through tips	\$2,378.00
Rewards approved for tipsters	\$3,840.00

Criminal Intelligence Unit (CIU) and Gang Intelligence Unit (GIU) Summary: 2003	
<u>Information Systems</u>	
Number of Officer Threat Bulletins sent	43
Number of Intelligence Bulletins sent	7
<u>Hate Crimes</u>	
Hate Crimes	12
Hate Incidents (non-criminal)	6
Cases initially reported as hate crime, but did not meet the criteria after review	31
<u>Gang Intelligence</u>	
Number of incidents initially referred to GIU for review	
<i>*****These are incidents initially documented as gang-related. They do not reflect incidents that were verified as gang-related after review.*****</i>	
Juvenile incidents	248
All other incidents	222
Total incidents	470
Subjects entered into the gang database	238



¹The total value for each year is calculated based on the value of a volunteer hour taken from annual studies published by the Points of Light Foundation and the Independent Sector.



INDEX CRIMES REPORTED TO THE CHARLOTTE POLICE DEPARTMENT (1973-1993) AND CHARLOTTE-MECKLENBURG POLICE (1994-2003)

CHARLOTTE POLICE DEPARTMENT:																
	1973	1974	1975	1976	1977	1978	1979	1980	1981	1982	1983	1984	1985	1986	1987	1988
HOMICIDE	60	60	68	52	46	51	49	60	52	47	44	54	58	58	49	45
RAPE	67	58	71	84	118	113	116	142	198	197	258	243	226	302	301	311
ROBBERY	712	1005	822	731	614	709	702	686	773	990	1103	1143	1121	1454	1486	1933
AGG. ASSAULT	1032	1121	976	1028	1465	1561	1617	1868	2143	2864	2863	2990	3172	3675	4147	4521
BURGLARY TOTAL	5546	8779	8565	7236	7312	7009	6676	8245	8587	8805	8108	8664	8563	9598	10117	10605
RESIDENTIAL	3152	5112	5146	4510	4672	4692	4074	4924	4972	4583	4641	5290	5100	6347	6583	6851
COMMERCIAL	2394	3667	3419	2726	2640	2317	2602	3321	3615	4222	3467	3374	3463	3251	3534	3754
LARCENY TOTAL	7664	10671	12587	13626	12432	12428	12563	13760	16444	18762	17773	18297	18447	18637	21723	24236
FROM AUTO	3117	4027	5871	7442	6361	5868	5898	6505	7842	8633	7785	8218	7835	7081	8175	8885
BICYCLE	662	1445	1331	1050	1060	1060	947	1156	859	1093	1066	950	857	816	697	602
SHOPLIFT	1445	1868	1869	1851	1758	1954	2049	2003	2427	3315	3085	3271	3356	3611	4523	5344
OTHER	2440	3331	3516	3283	3253	3546	3669	4096	5316	5721	5837	6399	6399	7129	8328	9405
VEHICLE THEFT	1030	1218	1082	898	1006	1246	1263	1444	1449	1320	1337	1375	1502	1659	1777	2323
TOTAL INDEX WITHOUT ARSON	16111	22912	24171	23655	22993	23117	22986	26205	29646	32985	31486	32766	33089	35383	39600	43974
ARSON ¹	(Arson was not added to the Index until 1980 and prior arson data is not available.)							200	160	190	259	329	268	315	297	365
TOTAL INDEX								26405	29806	33175	31745	33095	33357	35698	39897	44339
VIOLENT PROPERTY	1871	2244	1937	1895	2243	2434	2484	2756	3166	4098	4268	4430	4577	5489	5983	6810
OTHER	14240	20668	22234	21760	20750	20683	20502	23649	26640	29077	27477	28665	28780	30209	33914	37529
YEARLY % CHANGE IN TOTAL INDEX	(Arson was not added to the Index until 1980 and prior arson data is not available.)								12.90%	11.30%	-4.30%	4.30%	0.80%	7.00%	11.80%	11.10%

CHARLOTTE POLICE DEPARTMENT:						CHARLOTTE-MECKLENBURG POLICE DEPARTMENT:									
	1989	1990	1991	1992	1993 *	1994	1995	1996	1997	1998	1999	2000	2001	2002	2003
HOMICIDE	73	93	115	99	122 *	88	89	71	59	65	84	75	66	67	66
RAPE	320	381	402	354	356 *	351	362	304	342	326	265	304	292	289	299
ROBBERY	2369	3208	2899	3058	3227 *	2711	2949	2595	3227 *	2400	2517	2651	2996	2893	2688
AGG. ASSAULT	4874	5434	5340	5938	6020 *	5952	5824	5944	6045	5829	5275	4482	4420	4334	4137
BURGLARY TOTAL	12772	10891	11615	12565	10692 *	10325	9959	10227	10413	10701	10314	9598	10285	10516	11066
RESIDENTIAL	7956	6836	7247	8475	6763 *	6991	6673	6877	6945	6390	6737	6518	6397	7213	7876
COMMERCIAL	4813	4055	4358	4090	3929 *	3334	3286	3350	3468	4311	3577	3080	3888	3303	3190
LARCENY TOTAL	26228	27153	27799	27014	26370 *	28468	29273	30199	28922	29256	30116	27789	27291	25860	26628
FROM AUTO	9876	9891	10960	10830	10968 *	10950	11247	12995	12623	12876	13625	12461	11966	13171	14044
BICYCLE	589	542	552	666	553 *	682	859	665	562	567	399	252	175	173	206
SHOPLIFT	5297	4992	5517	4778	4300 *	4064	3934	3964	3893	3619	3569	3050	3477	3182	2777
OTHER	10648	11728	10770	10740	10549 *	12772	13233	12575	11844	12194	12523	12024	11673	9334	9601
VEHICLE THEFT	2701	2699	2726	2454	2972 *	3160	3650	4177	4383	3918	4845	4561	4406	4638	6840
TOTAL INDEX WITHOUT ARSON	49337	49859	50896	51482	49759 *	51055	52106	53517	52880	52495	53416	49460	49756	48597	51724
ARSON ¹	332	418	442	413	388 *	418	346	440	350	266	287	313	317	455	300
TOTAL INDEX	49669	50277	51338	51895	50147 *	51473	52452	53957	53230	52761	53703	49773	50073	49052	52024
VIOLENT PROPERTY	7636	9116	8756	9449	9725 *	9102	9224	8914	9162	8620	8141	7512	7774	7583	7190
OTHER	42033	41161	42582	42446	40422 *	42371	43228	45043	44068	44141	45562	42261	42299	41469	44834
YEARLY % CHANGE IN TOTAL INDEX	12.0%	1.2%	2.1%	1.1%	-3.4% *	-4.4%	1.9%	2.9%	-1.3%	-0.9%	1.8%	-7.3%	0.6%	-2.0%	6.1%

RATES PER 100,000 ESTIMATED POPULATION REPORTED BY CHARLOTTE POLICE DEPARTMENT (1973-1993)² AND CHARLOTTE-MECKLENBURG POLICE DEPARTMENT (1994-2003)³

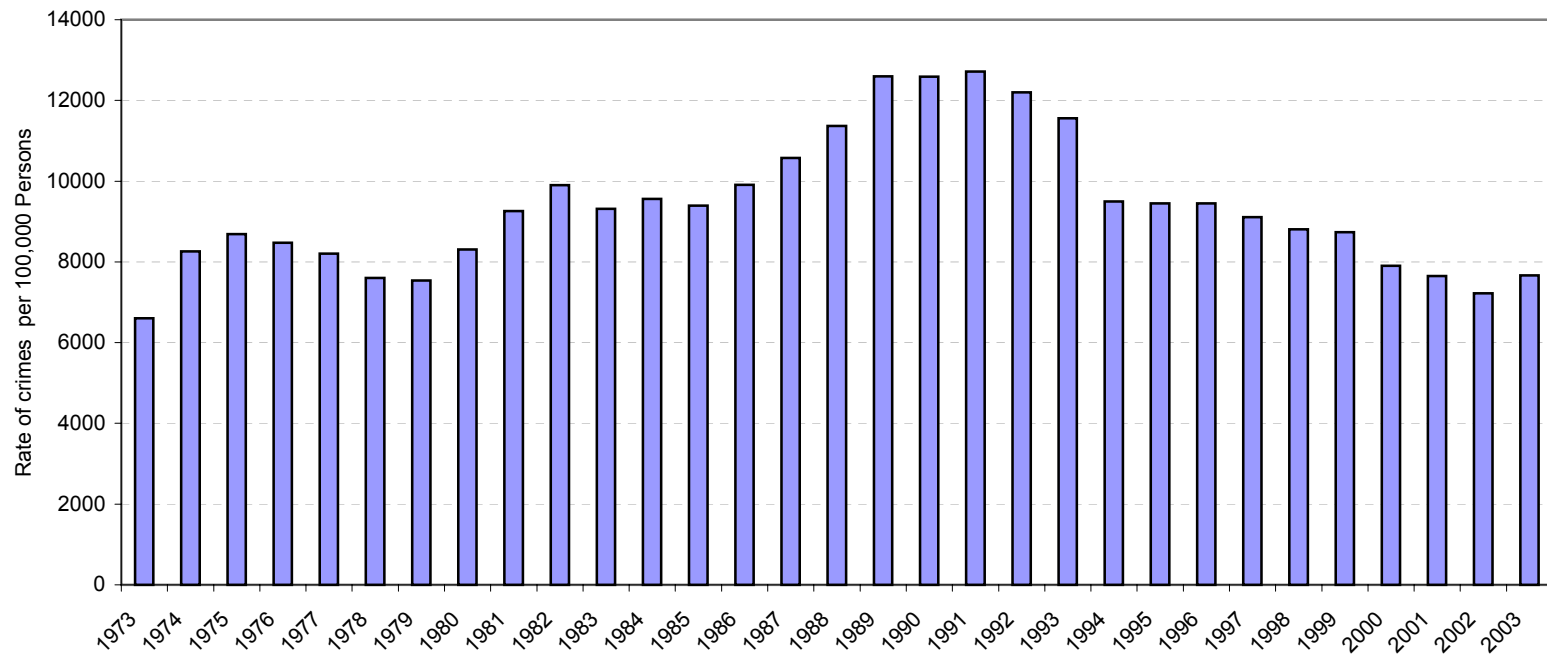
CHARLOTTE POLICE DEPARTMENT:																
	1973	1974	1975	1976	1977	1978	1979	1980	1981	1982	1983	1984	1985	1986	1987	1988
EST. JURISDICTION POPULATION	243929	277364	278263	279180	280097	304087	305004	315473	320191	333176	337895	342613	352332	357051	374546	386846
HOMICIDE	24.6	21.6	24.4	18.6	16.4	16.8	16.1	19.0	16.2	14.1	13.0	15.8	16.5	16.2	13.1	11.6
RAPE	27.5	20.9	25.5	30.1	42.1	37.2	38.0	45.0	61.8	59.1	76.4	70.9	64.1	84.6	80.4	80.4
ROBBERY	291.9	362.3	295.4	261.8	219.2	233.2	230.2	217.5	241.4	297.1	326.4	333.6	318.2	407.2	396.7	499.7
AGG. ASSAULT	423.1	404.2	350.7	368.2	523.0	513.3	530.2	592.1	669.3	859.6	847.3	872.7	900.3	1029.3	1107.2	1168.7
BURGLARY TOTAL	2273.6	3165.2	3078.0	2591.9	2610.5	2304.9	2188.8	2613.5	2681.8	2642.7	2399.6	2528.8	2430.4	2688.1	2701.1	2741.4
RESIDENTIAL	1292.2	1843.1	1849.3	1615.4	1668.0	1543.0	1335.7	1560.8	1552.8	1375.5	1373.5	1544.0	1447.5	1777.6	1757.6	1771.0
COMMERCIAL	981.4	1322.1	1228.7	976.4	942.5	762.0	853.1	1052.7	1129.0	1267.2	1026.1	984.8	982.9	910.5	943.5	970.4
LARCENY TOTAL	3141.9	3847.3	4523.4	4880.7	4438.5	4087.0	4119.0	4361.7	5135.7	5631.3	5259.9	5340.4	5235.7	5219.7	5799.8	6265.0
FROM AUTO	1277.8	1451.9	2109.9	2665.7	2271.0	1929.7	1933.7	2062.0	2449.2	2591.1	2304.0	2398.6	2223.8	1983.2	2182.6	2296.8
BICYCLE	271.4	521.0	478.3	376.1	378.4	348.6	310.5	366.4	268.3	328.1	315.5	277.3	243.2	228.5	186.1	155.6
SHOPLIFT	592.4	673.5	671.7	663.0	627.6	642.6	671.8	634.9	758.0	995.0	913.0	954.7	952.5	1011.3	1207.6	1381.4
OTHER	1000.3	1200.9	1263.6	1175.9	1161.4	1166.1	1202.9	1298.4	1660.3	1717.1	1727.5	1709.8	1816.2	1996.6	2223.5	2431.2
VEHICLE THEFT	422.3	439.1	388.8	321.7	359.2	409.8	414.1	457.7	452.5	396.2	395.7	401.3	426.3	464.6	474.4	600.5
TOTAL INDEX WITHOUT ARSON	6604.8	8260.6	8686.4	8473.0	8208.9	7602.1	7536.3	8306.6	9258.8	9900.2	9318.3	9563.6	9391.4	9909.8	10572.8	11367.3
ARSON ¹	¹ (Arson was not added to the Index until 1980 and prior arson data is not available.)							63.4	50.0	57.0	76.7	96.0	76.1	88.2	79.3	94.4
TOTAL INDEX								8370.0	9308.8	9957.2	9394.9	9659.6	9467.5	9998.0	10652.1	11461.7
VIOLENT PROPERTY	767.0	809.0	696.1	678.8	800.8	800.4	814.4	873.6	988.8	1230.0	1263.1	1293.0	1299.1	1537.3	1597.4	1760.4
YEARLY % CHANGE IN TOTAL INDEX	¹ (Arson was not added to the Index until 1980 and prior arson data is not available.)								NA	11.2%	7.0%	-5.6%	2.8%	-2.0%	6.5%	7.6%

²Population estimates for the city of Charlotte from 1973-1994 are from the Research Section of the Charlotte Chamber of Commerce.

CHARLOTTE POLICE DEPARTMENT:						CHARLOTTE-MECKLENBURG POLICE DEPARTMENT:										
	1989	1990	1991	1992	1993	*	1994	1995	1996	1997	1998	1999	2000	2001	2002	2003
EST. JURISDICTION POPULATION	391565	395934	400303	421990	430430	*	537629	551608	566226	580664	595762	611251	625810	650407	673177	674509
HOMICIDE	18.6	23.5	28.7	23.5	28.3	*	16.4	16.1	12.5	10.2	10.9	13.7	12.0	10.1	10.0	9.8
RAPE	81.7	96.2	100.4	83.9	82.7	*	65.3	65.6	53.7	58.9	54.7	43.4	48.6	44.9	42.9	44.3
ROBBERY	605.0	810.2	724.2	724.7	749.7	*	504.3	534.6	458.3	467.7	402.8	411.8	423.6	460.6	429.8	398.5
AGG. ASSAULT	1244.7	1372.5	1334.0	1407.1	1398.6	*	1107.1	1055.8	1049.8	1041.0	978.4	863.0	716.2	679.6	643.8	613.3
BURGLARY TOTAL	3261.8	2750.7	2901.6	2977.6	2484.0	*	1920.5	1805.4	1806.2	1793.3	1796.2	1687.4	1533.7	1581.3	1562.1	1640.6
RESIDENTIAL	2031.8	1726.6	1810.4	2008.3	1571.2	*	1300.3	1209.7	1214.5	1196.0	1072.6	1102.2	1041.5	983.5	1071.5	1167.7
COMMERCIAL	1229.2	1024.2	1088.7	969.2	912.8	*	620.1	595.7	591.6	597.2	723.6	585.2	492.2	597.8	490.7	472.9
LARCENY TOTAL	6698.2	6858.0	6944.5	6401.6	6126.4	*	5295.1	5306.8	5333.4	4980.8	4910.7	4926.9	4440.5	4196.0	3841.5	3947.8
FROM AUTO	2522.2	2498.1	2737.9	2566.4	2548.1	*	2036.7	2038.9	2295.0	2173.9	2161.3	2229.0	1991.2	1839.8	1956.5	2082.1
BICYCLE	150.4	136.9	137.9	157.8	128.5	*	126.9	155.7	117.4	96.8	95.2	65.3	40.3	26.9	25.7	30.5
SHOPLIFT	1352.8	1260.8	1378.2	1132.3	999.0	*	755.9	713.2	700.1	670.4	607.5	583.9	487.4	534.6	472.7	411.7
OTHER	2719.3	2962.1	2690.5	2545.1	2450.8	*	2375.6	2399.0	2220.8	2039.7	2046.8	2048.7	1921.3	1794.7	1386.6	1423.4
VEHICLE THEFT	689.8	681.7	681.0	581.5	690.5	*	587.8	661.7	737.7	754.8	657.6	792.6	728.8	677.4	689.0	1014.1
TOTAL INDEX WITHOUT ARSON	12600.0	12592.8	12714.4	12199.8	11560.3	*	9496.3	9446.2	9451.5	9106.8	8811.4	8738.8	7903.4	7650.0	7219.1	7668.4
ARSON ¹	84.8	105.6	110.4	97.9	90.1	*	77.7	62.7	77.7	60.3	44.6	47.0	50.0	48.7	67.6	44.5
TOTAL INDEX	12684.7	12698.3	12824.8	12297.7	11650.4	*	9574.1	9508.9	9529.2	9167.1	8856.1	8785.8	7953.4	7698.7	7286.6	7712.9
VIOLENT PROPERTY	1950.1	2302.4	2187.3	2239.2	2259.4	*	1693.0	1672.2	1574.3	1577.8	1446.9	1331.9	1200.4	1195.3	1126.4	1066.0
YEARLY % CHANGE IN TOTAL INDEX	10.70%	0.10%	1.00%	-4.10%	-5.30%	*	-6.80%	-0.70%	0.20%	-3.80%	-3.40%	-0.80%	-9.50%	-3.2%	-5.4%	5.8%

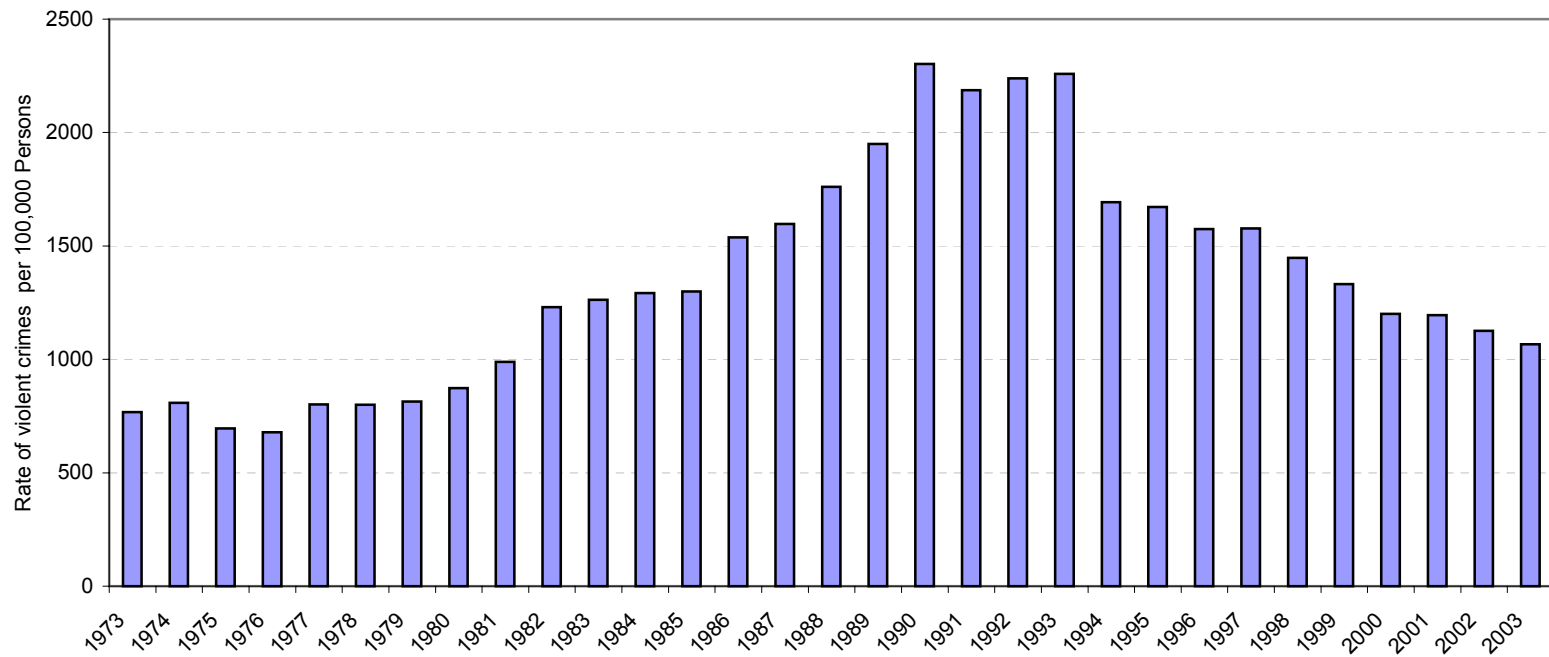
³The population estimates for the C-MPD jurisdiction in 1994-1999 were extrapolated using the Chamber of Commerce's estimates of the yearly percentage changes in the Mecklenburg County population, applied to the 1990 Census base population for the jurisdiction. The 2000 population is based on the Census totals for Mecklenburg County excluding the totals for the incorporated towns (except Mint Hill). The jurisdiction populations after Census 2000 are now based on Planning Commission estimates published in July each year; rate calculations for 2001-2002 may therefore show slight differences from previous annual reports based on estimates from other sources. The population for 2003 does not include Mint Hill, although the crime totals do include crimes occurring in Mint Hill during the first half of the year prior to July 1, 2003.

Index Crime Rates Per 100,000 Est. Jurisdiction Population¹
Charlotte Police Dept. (1973-1993) and Charlotte-Mecklenburg Police Dept. (1994-2003)



¹See notes on page ii on population sources and rate calculations.

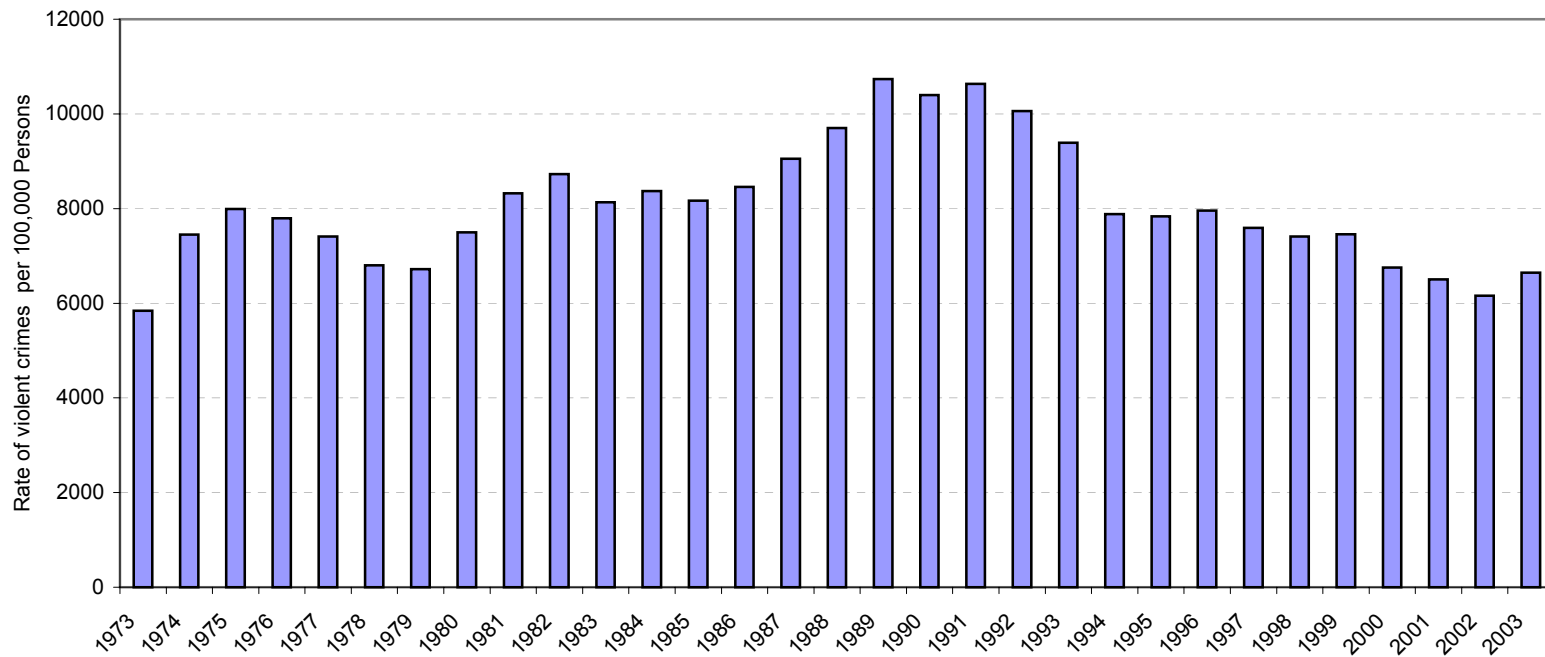
Violent Index¹ Crime Rates Per 100,000 Est. Jurisdiction Population²
Charlotte Police Dept. (1973-1993) and Charlotte-Mecklenburg Police Dept. (1994-2003)



¹Violent Index includes homicide, rape, robbery, and aggravated assault.

²See notes on page ii on population sources and rate calculations.

**Property Index¹ Crime Rates Per 100,000 Est. Jurisdiction Population²
Charlotte Police Dept. (1973-1993) and Charlotte-Mecklenburg Police Dept. (1994-2003)**



¹Property Index includes burglary, larceny and vehicle theft.

²See notes on page ii on population sources and rate calculations.

Uniform Crime Reporting Procedures:

The Charlotte-Mecklenburg Police Department reports offense and arrest statistics in accordance with standard Uniform Crime Reporting (UCR) guidelines. UCR policy states that any adjustments to previous months can be made on the current month's report:

...In tabulating crime counts, an agency may find that offense totals for past months require adjustments due to developments in the investigation or other handling of the matter. It may be necessary to adjust totals reported to UCR for the past month or prior months. Needed adjustments can be made on the current month's report and do not affect the reliability of the figures in that such adjustments tend to equalize each other from month to month over a period of time.

- *Uniform Crime Reporting Handbook*, FBI, 1984, p. 42-43

We are required to report crime monthly to the UCR program, and we do therefore make an effort to process monthly changes in a timely manner. However, occasionally due to the review and processing required for reclassifying, unfounding or clearing cases, the current month's totals may reflect the processing of a backlog of these changes from previous months.

Users of the data are cautioned that conclusions about substantial changes in crime trends or in clearance rates based on only a single month's data or trend may reflect some of these adjustments. For this reason, in addition to the monthly and year-to-date trends on Page 1, the monthly report routinely includes a comparison for the previous 12 months (p. 4), as well as graphs that provide seasonal/monthly comparisons over a five-year period (p. 5-8).

We do make an effort to present the most accurate information available at the time this report is published. Please notify the Research, Planning, and Analysis office if you have any questions about the data in this report.

The division names adopted in 2003 are used in this report. For ease of use, they also include the old district designations in parentheses.