



**CHARLOTTE-MECKLENBURG POLICE DEPARTMENT
MONTHLY SUMMARY REPORT
JANUARY-FEBRUARY, 2003**

**Darrel Stephens
Chief of Police**

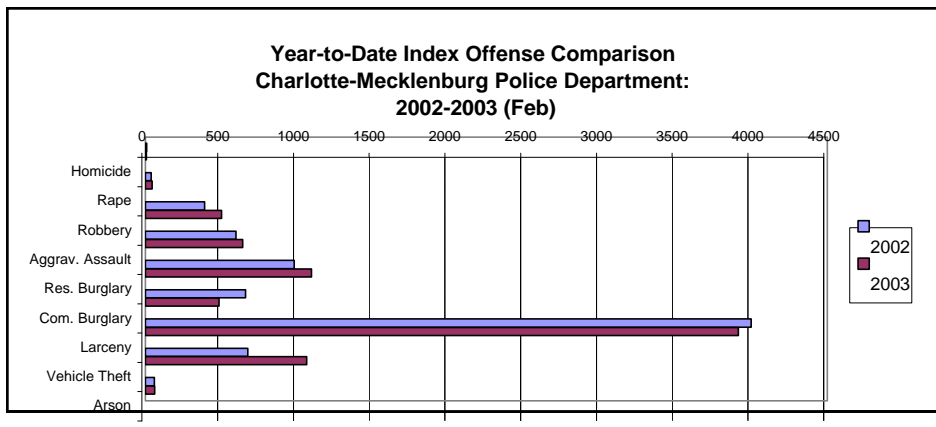
INDEX OFFENSES REPORTED TO CHARLOTTE-MECKLENBURG POLICE DEPARTMENT

FEBRUARY, 2003 INDEX OFFENSES	# THIS MONTH	% OF ALL INDEX	# LAST MONTH	MONTHLY % CHANGE	SAME MONTH LAST YEAR	MONTHLY % CHANGE	THIS YEAR TO DATE	LAST YEAR TO DATE	ANNUAL % CHANGE
HOMICIDE (MURDER & NON- NEGLIGENT MANSLAUGHTER)	2	0.1%	5	-60.0%	5	-60.0%	7	9	-22.2%
RAPE TOTAL	18	0.5%	27	-33.3%	25	-28.0%	45	38	18.4%
ACTUAL	16	0.5%	26	-38.5%	23	-30.4%	42	34	23.5%
ATTEMPT	2	0.1%	1	100.0%	2	0.0%	3	4	-25.0%
ROBBERY TOTAL	170	4.8%	333	-48.9%	154	10.4%	503	390	29.0%
ARMED	119	3.4%	268	-55.6%	126	-5.6%	387	324	19.4%
STRONG-ARM	51	1.5%	65	-21.5%	28	82.1%	116	66	75.8%
AGGRAVATED ASSAULT TOTAL	274	7.8%	368	-25.5%	251	9.2%	642	597	7.5%
BURGLARY TOTAL	705	20.1%	877	-19.6%	639	10.3%	1582	1642	-3.7%
RESIDENTIAL	507	14.5%	589	-13.9%	391	29.7%	1096	982	11.6%
COMMERCIAL	198	5.6%	288	-31.3%	248	-20.2%	486	660	-26.4%

FORCE	584	16.6%	710	-17.7%	483	20.9%	1294	1256	3.0%
NO FORCE	81	2.3%	119	-31.9%	116	-30.2%	200	265	-24.5%
ATTEMPT	40	1.1%	48	-16.7%	40	0.0%	88	121	-27.3%
LARCENY TOTAL	1841	52.5%	2072	-11.1%	1858	-0.9%	3913	3997	-2.1%
\$200 AND OVER	943	26.9%	1029	-8.4%	854	10.4%	1972	1909	3.3%
\$50 TO \$200	303	8.6%	367	-17.4%	369	-17.9%	670	749	-10.5%
UNDER \$50	595	17.0%	676	-12.0%	635	-6.3%	1271	1339	-5.1%

FROM AUTO	1016	29.0%	1030	-1.4%	892	13.9%	2046	1915	6.8%
BICYCLE	2	0.1%	9	-77.8%	10	-80.0%	11	21	-47.6%
SHOPLIFTING	196	5.6%	208	-5.8%	264	-25.8%	404	546	-26.0%
OTHERS	627	17.9%	825	-24.0%	692	-9.4%	1452	1515	-4.2%
VEHICLE THEFT TOTAL	481	13.7%	583	-17.5%	256	87.9%	1064	676	57.4%
ARSON TOTAL	17	0.5%	45	-62.2%	31	-45.2%	62	60	3.3%
TOTALS	3508	100.0%	4310	-18.6%	3219	9.0%	7818	7409	5.5%
VIOLENT PROPERTY	464 3044	13.2% 86.8%	733 3577	-36.7% -14.9%	435 2784	6.7% 9.3%	1197 6621	1034 6375	15.8% 3.9%

NOTE: These totals include offenses reported to the Charlotte-Mecklenburg Police Department in accordance with the Uniform Crime Reporting Program. Totals for homicide do not include cases investigated by the police but classed by UCR guidelines as negligent manslaughter or as "justifiable homicide."

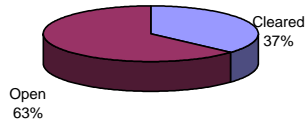


INDEX CLEARANCES REPORTED BY THE CHARLOTTE-MECKLENBURG POLICE DEPARTMENT

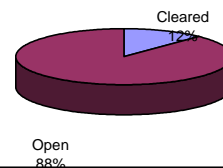
FEBRUARY, 2003 INDEX CLEARANCES	THIS MONTH:		LAST MONTH:		SAME MO. LAST YR:		THIS YEAR TO DATE:		LAST YEAR TO DATE:	
	NO.	%	NO.	%	NO.	%	NO.	%	NO.	%
MURDER & NON-NEGLIGENT MANSLAUGHTER	1	50.0%	4	80.0%	5	100.0%	5	71.4%	8	88.9%
RAPE TOTAL	2	11.1%	20	74.1%	7	28.0%	22	48.9%	17	44.7%
ACTUAL	1	6.3%	19	73.1%	7	30.4%	20	47.6%	16	47.1%
ATTEMPT	1	50.0%	1	100.0%	0	0.0%	2	66.7%	1	25.0%
ROBBERY TOTAL	28	16.5%	60	18.0%	49	31.8%	88	17.5%	109	27.9%
ARMED	19	16.0%	39	14.6%	43	34.1%	58	15.0%	93	28.7%
STRONG-ARM	9	17.6%	21	32.3%	6	21.4%	30	25.9%	16	24.2%
AGGRAVATED ASSAULT TOTAL	82	29.9%	242	65.8%	104	41.4%	324	50.5%	329	55.1%
BURGLARY TOTAL	25	3.5%	90	10.3%	38	5.9%	115	7.3%	226	13.8%
RESIDENTIAL	19	3.7%	68	11.5%	30	7.7%	87	7.9%	173	17.6%
COMMERCIAL	6	3.0%	22	7.6%	8	3.2%	28	5.8%	53	8.0%
LARCENY TOTAL	162	8.8%	317	15.3%	207	11.1%	479	12.2%	484	12.1%
FROM AUTO	15	1.5%	46	4.5%	16	1.8%	61	3.0%	45	2.3%
BICYCLE	1	50.0%	2	22.2%	3	30.0%	3	27.3%	4	19.0%
SHOPLIFTING	104	53.1%	133	63.9%	149	56.4%	237	58.7%	304	55.7%
OTHERS	42	6.7%	136	16.5%	39	5.6%	178	12.3%	131	8.6%
VEHICLE THEFT TOTAL	70	14.6%	116	19.9%	59	23.0%	186	17.5%	155	22.9%
ARSON TOTAL	5	29.4%	17	37.8%	13	41.9%	22	35.5%	26	43.3%
TOTALS	375	10.7%	866	20.1%	482	15.0%	1241	15.9%	1354	18.3%
VIOLENT PROPERTY	113	24.4%	326	44.5%	165	37.9%	439	36.7%	463	44.8%
PROPERTY	262	8.6%	540	15.1%	317	11.4%	802	12.1%	891	14.0%

NOTE: Clearances are reported in accordance with Uniform Crime Report guidelines. Since clearances are not counted until they are entered into the Records system, any delays in processing may result in some clearances being reported in succeeding months.

**Year-to-Date Violent Index Clearance Rate
Charlotte-Mecklenburg Police Department: 2003 (Feb)**

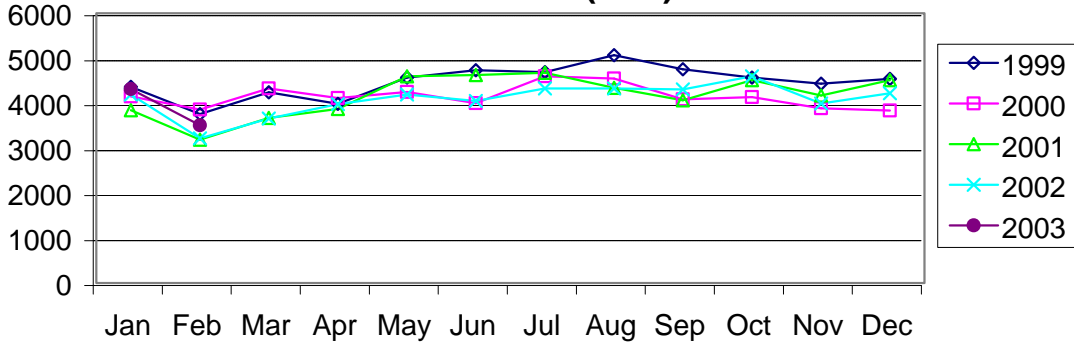


**Year-to-Date Property Index Clearance Rate
Charlotte-Mecklenburg Police Department: 2003 (Feb)**

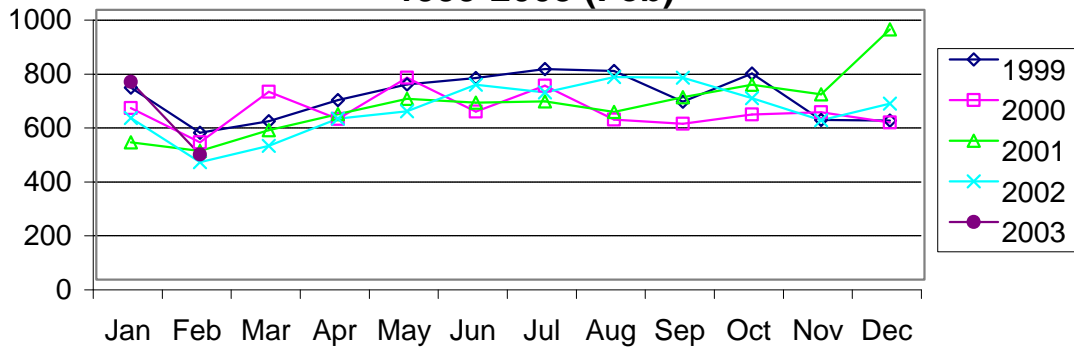


Clearance rates for crime reporting are calculated by dividing the number of crimes cleared during a designated time span by the number of crimes reported in the same period and converting the result to a percentage (multiplying by 100). Since cases from previous reporting periods can be cleared during the designated time span, the rate may be higher than 100%.

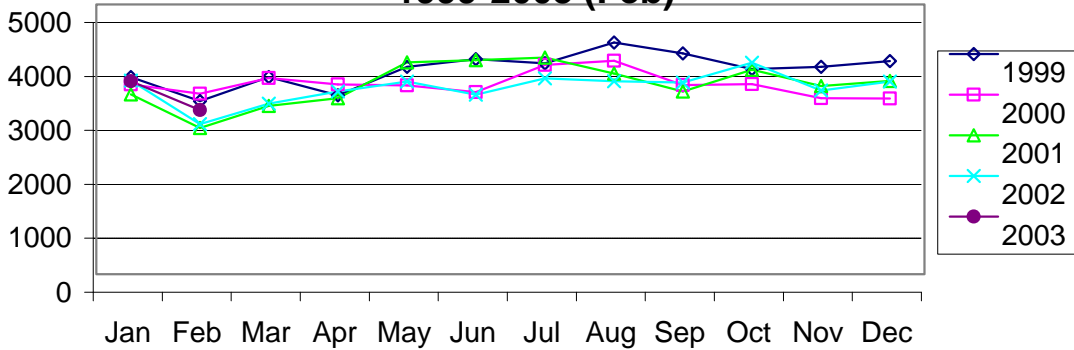
**Index Offenses Reported by Month
Charlotte-Mecklenburg Police Department:
1999-2003 (Feb)**



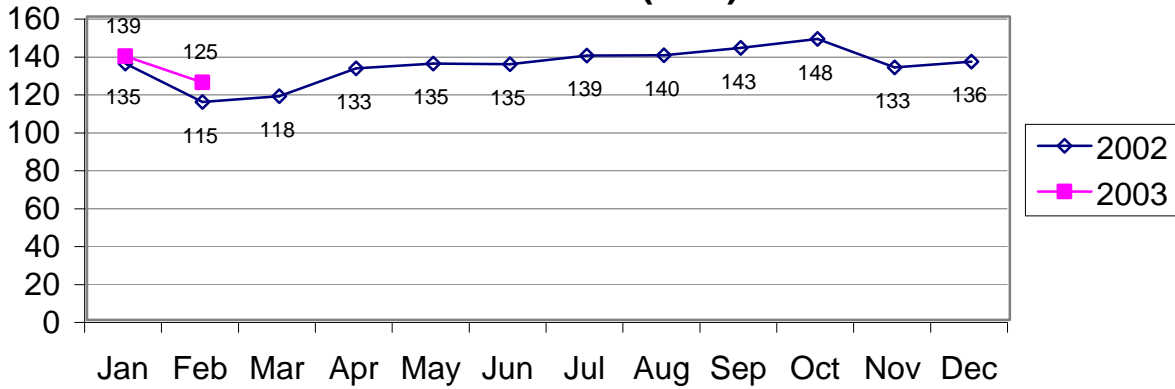
**Violent Index Offenses Reported by Month
Charlotte-Mecklenburg Police Department:
1999-2003 (Feb)**



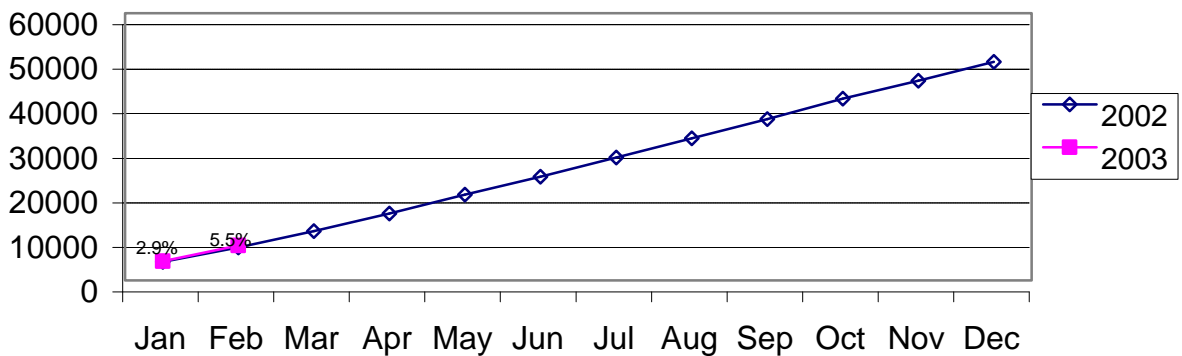
**Property Index Offenses Reported by Month
Charlotte-Mecklenburg Police Department:
1999-2003 (Feb)**



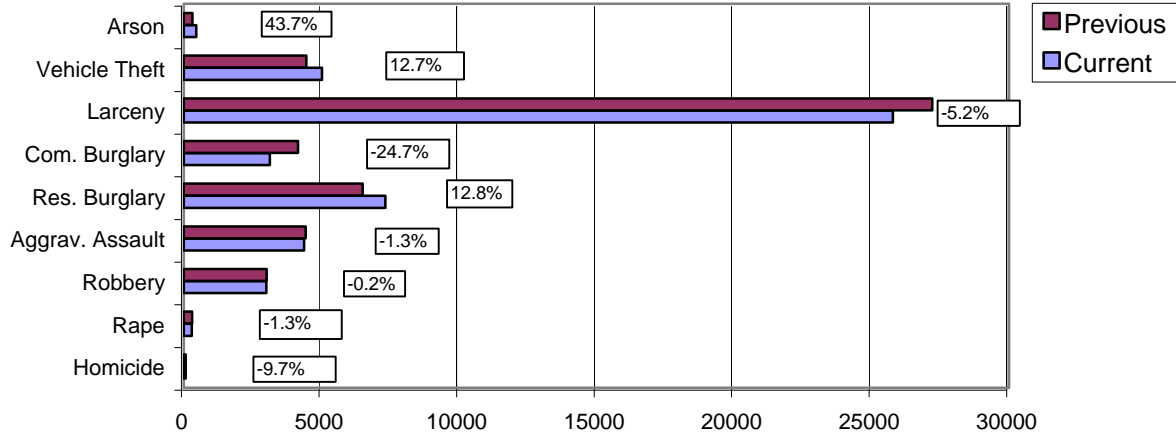
Index Offense Per Day Average by Month Charlotte-Mecklenburg Police Department: 2002-2003 (Feb)



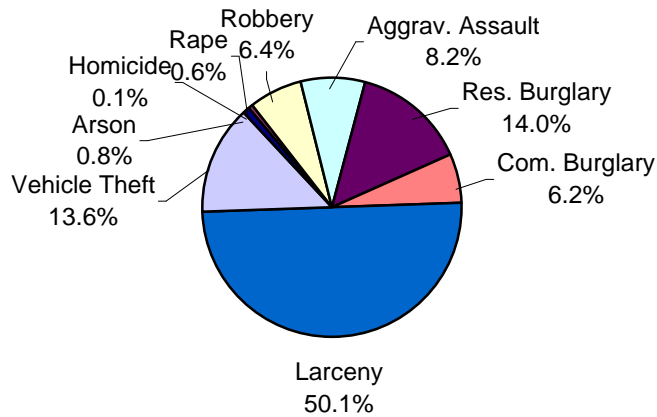
Index Offenses Year-to-Date Cumulative Totals Charlotte-Mecklenburg Police Department: 2002-2003 (Feb)



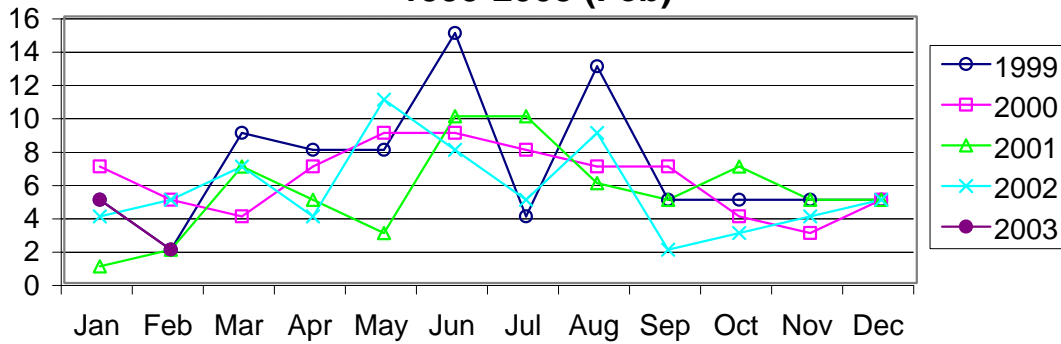
**Index Offenses in Current and Previous 12 Months
Charlotte-Mecklenburg Police Department:
2002-2003 (Feb)**



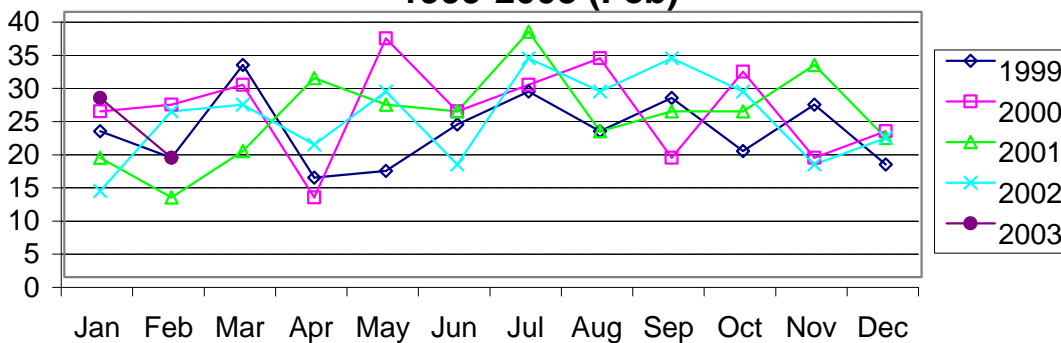
**Year-to-Date Index Offenses by Type
Charlotte-Mecklenburg Police Department: 2003**



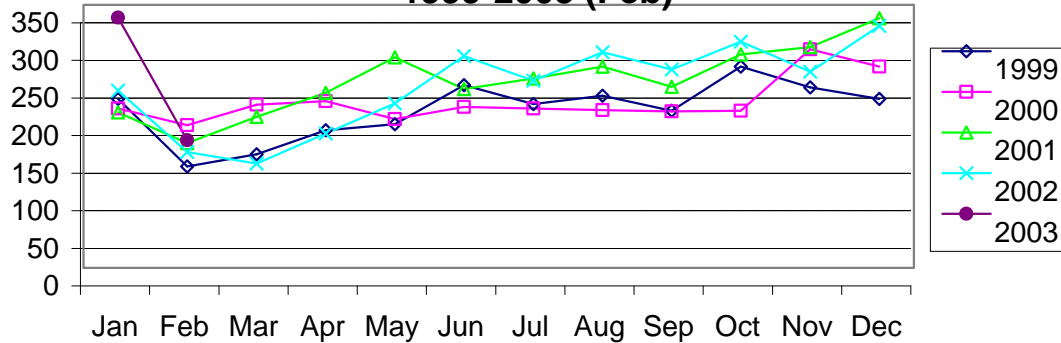
**Homicide Reported by Month
Charlotte-Mecklenburg Police Department:
1999-2003 (Feb)**



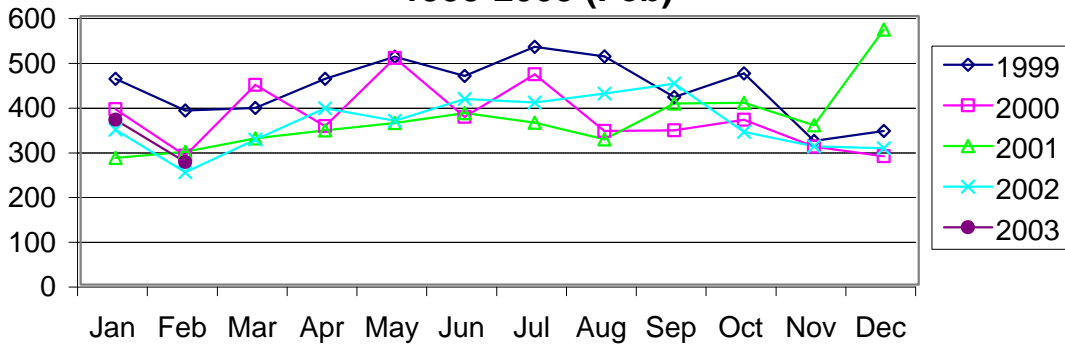
**Rape Reported by Month
Charlotte-Mecklenburg Police Department:
1999-2003 (Feb)**



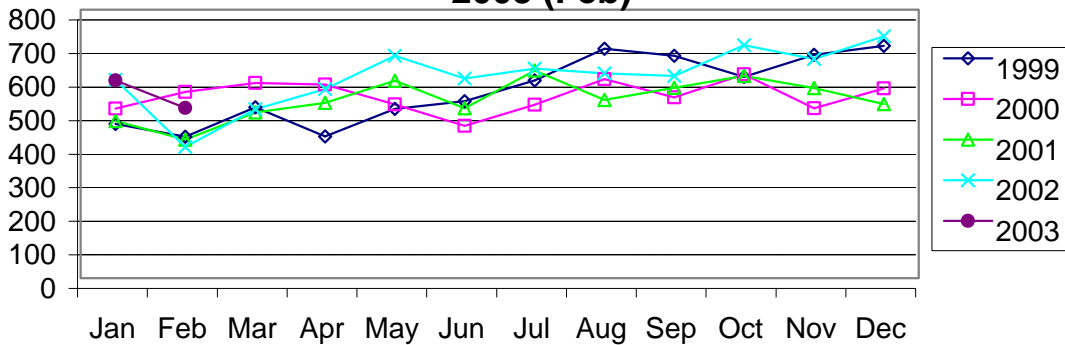
**Robbery Reported by Month
Charlotte-Mecklenburg Police Department:
1999-2003 (Feb)**



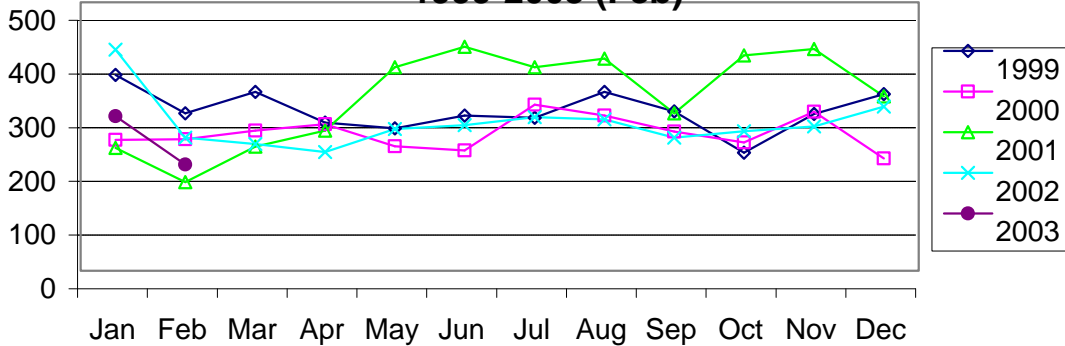
**Aggravated Assault Reported by Month
Charlotte-Mecklenburg Police Department:
1999-2003 (Feb)**



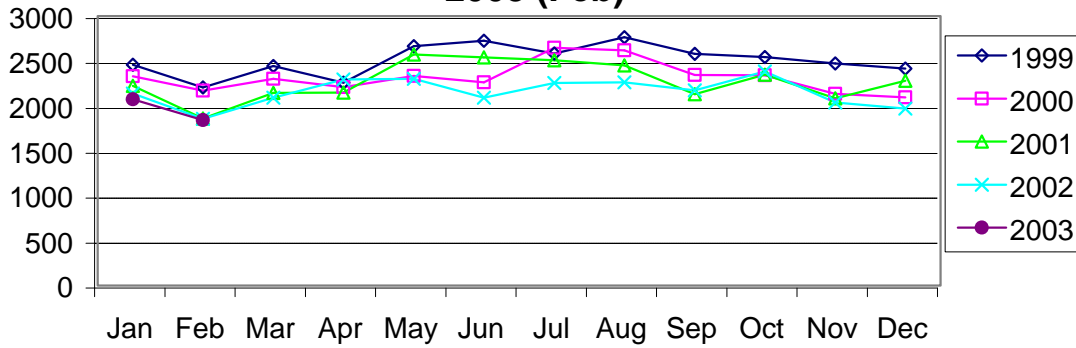
**Residential Burglary Reported by Month
Charlotte-Mecklenburg Police Department: 1999-
2003 (Feb)**



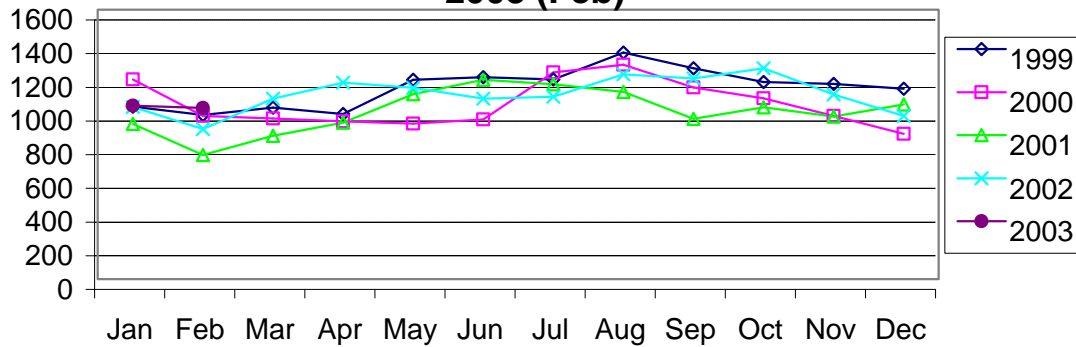
**Commercial Burglary Reported by Month
Charlotte-Mecklenburg Police Department:
1999-2003 (Feb)**



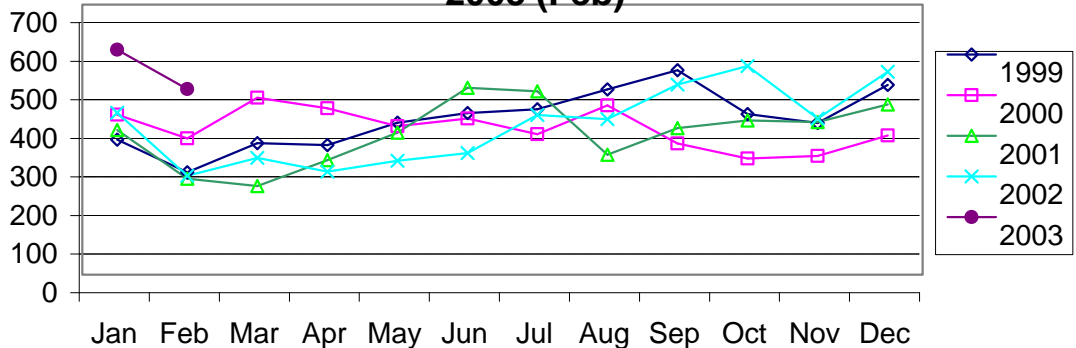
**Larceny Reported by Month
Charlotte-Mecklenburg Police Department: 1999-
2003 (Feb)**



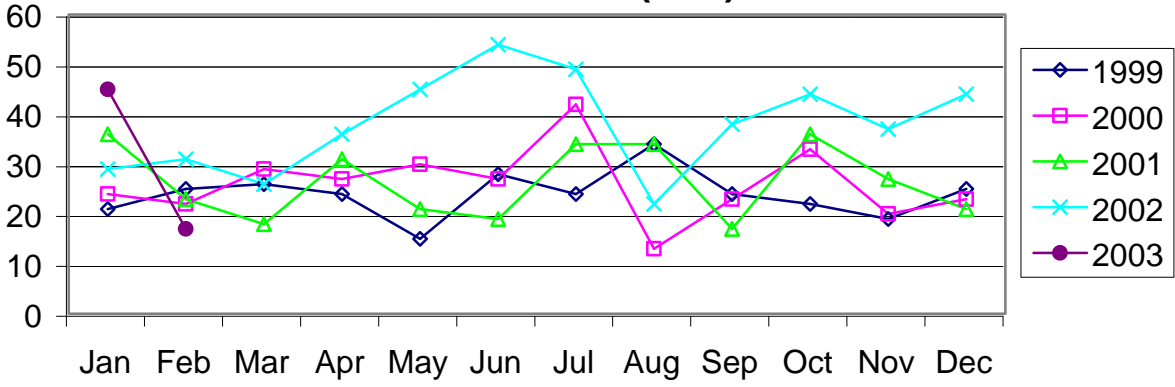
**Larceny from Vehicle Reported by Month
Charlotte-Mecklenburg Police Department: 1999-
2003 (Feb)**



**Vehicle Theft Reported by Month
Charlotte-Mecklenburg Police Department: 1999-
2003 (Feb)**



Arson Reported by Month Charlotte-Mecklenburg Police Department: 1999-2003 (Feb)



Index Offenses Reported by District and Service Area of Occurrence

West Service Area: Jan-Feb, 2002-2003

This data is based on the district configuration adopted Nov. 8, 2000.

INDEX_CATEGORIES	Adam 2			Adam3			*	West Service Area		
	2002	2003	% Change	2002	2003	% Change		2002	2003	% Change
MURDER & NON-NEGLIGENT MANSLAUGHTER	0	1	ERR	1	0	-100.0%	*	1	1	0.0%
RAPE	1	3	200.0%	2	3	50.0%	*	3	6	100.0%
ACTUAL	1	3	200.0%	2	3	50.0%	*	3	6	100.0%
ATTEMPTED	0	0	ERR	0	0	ERR	*	0	0	ERR
ROBBERY	28	48	71.4%	35	36	2.9%	*	63	84	33.3%
ARMED	23	39	69.6%	33	22	-33.3%	*	56	61	8.9%
STRONG-ARM	5	9	80.0%	2	14	600.0%	*	7	23	228.6%
AGGRAVATED ASSAULT	57	69	21.1%	56	92	64.3%	*	113	161	42.5%
BURGLARY	143	128	-10.5%	188	206	9.6%	*	331	334	0.9%
RESIDENTIAL	68	97	42.6%	99	121	22.2%	*	167	218	30.5%
COMMERCIAL	75	31	-58.7%	89	85	-4.5%	*	164	116	-29.3%
LARCENY	230	215	-6.5%	311	314	1.0%	*	541	529	-2.2%
FROM AUTO	106	107	0.9%	156	147	-5.8%	*	262	254	-3.1%
BICYCLE	2	0	-100.0%	1	0	-100.0%	*	3	0	-100.0%
SHOPLIFTING	35	22	-37.1%	30	20	-33.3%	*	65	42	-35.4%
OTHERS	87	86	-1.1%	124	147	18.5%	*	211	233	10.4%
VEHICLE THEFT	48	61	27.1%	109	115	5.5%	*	157	176	12.1%
ARSON	1	6	500.0%	4	10	150.0%	*	5	16	220.0%
TOTALS	508	531	4.5%	706	776	9.9%	*	1214	1307	7.7%
VIOLENT	86	121	40.7%	94	131	39.4%	*	180	252	40.0%
PROPERTY	422	410	-2.8%	612	645	5.4%	*	1034	1055	2.0%

Index Offenses Reported by District and Service Area of Occurrence

Southeast Service Area: Jan-Feb, 2002-2003

This data is based on the district configuration adopted Nov. 8, 2000.

INDEX_CATEGORIES	Baker 1			Baker 3			*	Southeast Service Area		
	2002	2003	% Change	2002	2003	% Change		2002	2003	% Change
MURDER & NON-NEGLIGENT MANSLAUGHTER	0	0	ERR	1	0	-100.0%	*	1	0	-100.0%
RAPE	3	7	133.3%	4	4	0.0%	*	7	11	57.1%
ACTUAL	3	6	100.0%	4	4	0.0%	*	7	10	42.9%
ATTEMPTED	0	1	ERR	0	0	ERR	*	0	1	ERR
ROBBERY	19	25	31.6%	46	54	17.4%	*	65	79	21.5%
ARMED	16	19	18.8%	41	48	17.1%	*	57	67	17.5%
STRONG-ARM	3	6	100.0%	5	7	40.0%	*	8	13	62.5%
AGGRAVATED ASSAULT	33	31	-6.1%	52	49	-5.8%	*	85	80	-5.9%
BURGLARY	101	129	27.7%	162	144	-11.1%	*	263	273	3.8%
RESIDENTIAL	42	73	73.8%	108	114	5.6%	*	150	187	24.7%
COMMERCIAL	59	56	-5.1%	54	30	-44.4%	*	113	86	-23.9%
LARCENY	282	255	-9.6%	377	408	8.2%	*	659	663	0.6%
FROM AUTO	115	110	-4.3%	185	228	23.2%	*	300	338	12.7%
BICYCLE	2	1	-50.0%	6	2	-66.7%	*	8	3	-62.5%
SHOPLIFTING	43	34	-20.9%	51	40	-21.6%	*	94	74	-21.3%
OTHERS	122	110	-9.8%	135	138	2.2%	*	257	248	-3.5%
VEHICLE THEFT	38	55	44.7%	76	121	59.2%	*	114	176	54.4%
ARSON	5	2	-60.0%	13	6	-53.8%	*	18	8	-55.6%
TOTALS	481	504	4.8%	731	786	7.5%	*	1212	1290	6.4%
VIOLENT	55	63	14.5%	103	107	3.9%	*	158	170	7.6%
PROPERTY	426	441	3.5%	628	679	8.1%	*	1054	1120	6.3%

Index Offenses Reported by District and Service Area of Occurrence

Northeast Service Area: Jan-Feb, 2002-2003

This data is based on the district configuration adopted Nov. 8, 2000.

INDEX_CATEGORIES	Charlie_1			Charlie_3			*	Northeast Service Area		
	2002	2003	% Change	2002	2003	% Change		2002	2003	% Change
MURDER & NON-NEGLIGENT MANSLAUGHTER	0	1	ERR	0	2	ERR	*	0	3	ERR
RAPE	1	2	100.0%	3	9	200.0%	*	4	11	175.0%
ACTUAL	1	2	100.0%	3	8	166.7%	*	4	10	150.0%
ATTEMPTED	0	0	ERR	0	1	ERR	*	0	1	ERR
ROBBERY	36	33	-8.3%	42	44	4.8%	*	78	77	-1.3%
ARMED	28	27	-3.6%	36	38	5.6%	*	64	65	1.6%
STRONG-ARM	7	6	-14.3%	6	6	0.0%	*	13	12	-7.7%
AGGRAVATED ASSAULT	51	47	-7.8%	44	57	29.5%	*	95	104	9.5%
BURGLARY	146	174	19.2%	182	142	-22.0%	*	328	316	-3.7%
RESIDENTIAL	95	115	21.1%	137	115	-16.1%	*	232	230	-0.9%
COMMERCIAL	51	59	15.7%	45	27	-40.0%	*	96	86	-10.4%
LARCENY	661	568	-14.1%	320	359	12.2%	*	981	927	-5.5%
FROM AUTO	373	356	-4.6%	150	197	31.3%	*	523	553	5.7%
BICYCLE	2	1	-50.0%	1	2	100.0%	*	3	3	0.0%
SHOPLIFTING	82	50	-39.0%	38	40	5.3%	*	120	90	-25.0%
OTHERS	204	161	-21.1%	131	120	-8.4%	*	335	281	-16.1%
VEHICLE THEFT	41	112	173.2%	55	143	160.0%	*	96	255	165.6%
ARSON	6	9	50.0%	12	8	-33.3%	*	18	17	-5.6%
TOTALS	942	946	0.4%	658	764	16.1%	*	1600	1710	6.9%
VIOLENT	88	83	-5.7%	89	112	25.8%	*	177	195	10.2%
PROPERTY	854	863	1.1%	569	652	14.6%	*	1423	1515	6.5%

Index Offenses Reported by District and Service Area of Occurrence

Central Service Area: Jan-Feb, 2002-2003

This data is based on the district configuration adopted Nov. 8, 2000.

INDEX_CATEGORIES	David_1			David_2			*	Central Service Area		
	2002	2003	% Change	2002	2003	% Change		2002	2003	% Change
MURDER & NON-NEGLIGENT MANSLAUGHTER	0	2	ERR	2	1	-50.0%	*	2	3	50.0%
RAPE	2	3	50.0%	4	5	25.0%	*	6	8	33.3%
ACTUAL	2	3	50.0%	3	5	66.7%	*	5	8	60.0%
ATTEMPTED	0	0	ERR	1	0	-100.0%	*	1	0	-100.0%
ROBBERY	12	18	50.0%	25	40	60.0%	*	37	58	56.8%
ARMED	5	9	80.0%	20	27	35.0%	*	25	36	44.0%
STRONG-ARM	7	9	28.6%	5	13	160.0%	*	12	22	83.3%
AGGRAVATED ASSAULT	28	43	53.6%	58	58	0.0%	*	86	101	17.4%
BURGLARY	69	70	1.4%	84	82	-2.4%	*	153	152	-0.7%
RESIDENTIAL	26	34	30.8%	56	53	-5.4%	*	82	87	6.1%
COMMERCIAL	43	36	-16.3%	28	29	3.6%	*	71	65	-8.5%
LARCENY	350	292	-16.6%	164	137	-16.5%	*	514	429	-16.5%
FROM AUTO	171	139	-18.7%	72	74	2.8%	*	243	213	-12.3%
BICYCLE	2	0	-100.0%	0	0	ERR	*	2	0	-100.0%
SHOPLIFTING	13	13	0.0%	10	2	-80.0%	*	23	15	-34.8%
OTHERS	164	140	-14.6%	82	61	-25.6%	*	246	201	-18.3%
VEHICLE THEFT	27	86	218.5%	50	66	32.0%	*	77	152	97.4%
ARSON	1	2	100.0%	5	4	-20.0%	*	6	6	0.0%
TOTALS	489	516	5.5%	392	393	0.3%	*	881	909	3.2%
VIOLENT	42	66	57.1%	89	104	16.9%	*	131	170	29.8%
PROPERTY	447	450	0.7%	303	289	-4.6%	*	750	739	-1.5%

Index Offenses Reported by District and Service Area of Occurrence

East Service Area: Jan-Feb, 2002-2003

This data is based on the district configuration adopted Nov. 8, 2000.

INDEX_CATEGORIES	Charlie_2			David_3			*	East Service Area		
	2002	2003	% Change	2002	2003	% Change		2002	2003	% Change
MURDER & NON-NEGLIGENT MANSLAUGHTER	0	0	ERR	2	0	-100.0%	*	2	0	-100.0%
RAPE	3	1	-66.7%	5	4	-20.0%	*	8	5	-37.5%
ACTUAL	2	1	-50.0%	5	4	-20.0%	*	7	5	-28.6%
ATTEMPTED	1	0	-100.0%	0	0	ERR	*	1	0	-100.0%
ROBBERY	62	65	4.8%	46	57	23.9%	*	108	122	13.0%
ARMED	49	51	4.1%	43	45	4.7%	*	92	96	4.3%
STRONG-ARM	13	14	7.7%	3	12	300.0%	*	16	26	62.5%
AGGRAVATED ASSAULT	53	51	-3.8%	76	60	-21.1%	*	129	111	-14.0%
BURGLARY	169	136	-19.5%	83	94	13.3%	*	252	230	-8.7%
RESIDENTIAL	130	106	-18.5%	43	70	62.8%	*	173	176	1.7%
COMMERCIAL	39	30	-23.1%	40	24	-40.0%	*	79	54	-31.6%
LARCENY	338	359	6.2%	194	178	-8.2%	*	532	537	0.9%
FROM AUTO	113	170	50.4%	86	104	20.9%	*	199	274	37.7%
BICYCLE	0	4	ERR	1	0	-100.0%	*	1	4	300.0%
SHOPLIFTING	114	74	-35.1%	21	10	-52.4%	*	135	84	-37.8%
OTHERS	111	111	0.0%	86	64	-25.6%	*	197	175	-11.2%
VEHICLE THEFT	52	80	53.8%	52	88	69.2%	*	104	168	61.5%
ARSON	1	3	200.0%	4	2	-50.0%	*	5	5	0.0%
TOTALS	678	695	2.5%	462	483	4.5%	*	1140	1178	3.3%
VIOLENT	118	117	-0.8%	129	121	-6.2%	*	247	238	-3.6%
PROPERTY	560	578	3.2%	333	362	8.7%	*	893	940	5.3%

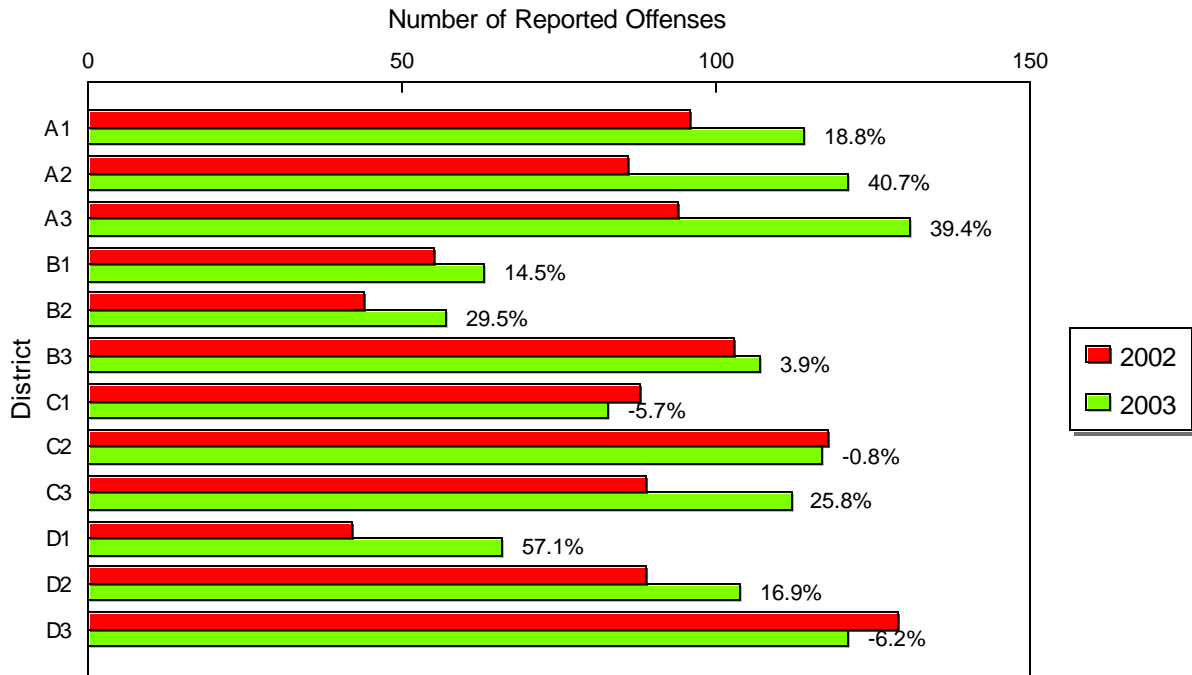
Index Offenses Reported by District and Service Area of Occurrence

South Service Area: Jan-Feb, 2002-2003

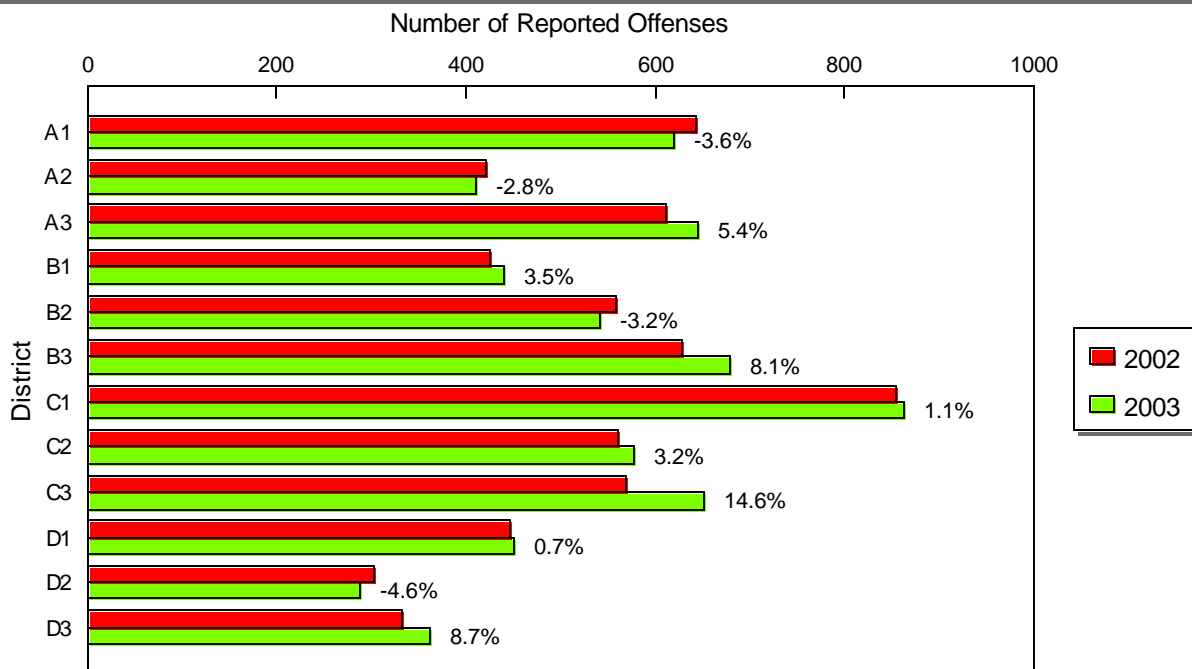
This data is based on the district configuration adopted Nov. 8, 2000.

INDEX_CATEGORIES	Adam_1			Baker_2			*	South Service Area		
	2002	2003	% Change	2002	2003	% Change		2002	2003	% Change
MURDER & NON-NEGLIGENT MANSLAUGHTER	3	0	-100.0%	0	0	ERR	*	3	0	-100.0%
RAPE	8	2	-75.0%	2	2	0.0%	*	10	4	-60.0%
ACTUAL	6	2	-66.7%	2	1	-50.0%	*	8	3	-62.5%
ATTEMPTED	2	0	-100.0%	0	1	ERR	*	2	1	-50.0%
ROBBERY	22	60	172.7%	17	23	35.3%	*	39	83	112.8%
ARMED	16	38	137.5%	14	15	7.1%	*	30	53	76.7%
STRONG-ARM	6	12	100.0%	3	8	166.7%	*	9	20	122.2%
AGGRAVATED ASSAULT	63	52	-17.5%	25	32	28.0%	*	88	84	-4.5%
BURGLARY	150	113	-24.7%	158	141	-10.8%	*	308	254	-17.5%
RESIDENTIAL	75	77	2.7%	96	106	10.4%	*	171	183	7.0%
COMMERCIAL	75	36	-52.0%	62	35	-43.5%	*	137	71	-48.2%
LARCENY	415	425	2.4%	347	347	0.0%	*	762	772	1.3%
FROM AUTO	202	193	-4.5%	184	190	3.3%	*	386	383	-0.8%
BICYCLE	2	1	-50.0%	2	0	-100.0%	*	4	1	-75.0%
SHOPLIFTING	75	68	-9.3%	33	27	-18.2%	*	108	95	-12.0%
OTHERS	136	163	19.9%	128	130	1.6%	*	264	293	11.0%
VEHICLE THEFT	77	79	2.6%	50	48	-4.0%	*	127	127	0.0%
ARSON	1	3	200.0%	4	5	25.0%	*	5	8	60.0%
TOTALS	739	734	-0.7%	603	598	-0.8%	*	1342	1332	-0.7%
VIOLENT	96	114	18.8%	44	57	29.5%	*	140	171	22.1%
PROPERTY	643	620	-3.6%	559	541	-3.2%	*	1202	1161	-3.4%

**Violent Index Offenses by District Year-to-Date
Charlotte-Mecklenburg Police Dept. : 2002-2003 (Feb)**



**Property Index Offenses by District Year-to-Date
Charlotte-Mecklenburg Police Dept. : 2002-2003 (Feb)**



**Arrests by Charlotte-Mecklenburg Police Department
Year-To-Date: 2002-2003 (Feb)**

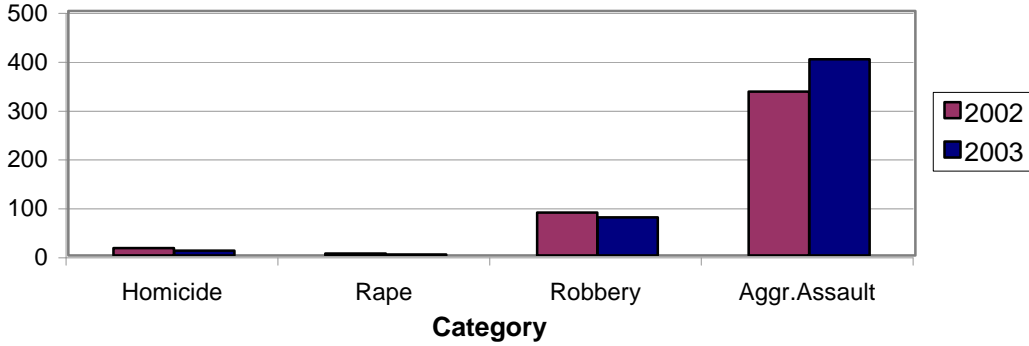
CATEGORY	ADULTS (AGE 18 & OLDER):			JUVENILES (UNDER 18):			TOTAL ARRESTS:		
	2002 Y-T-D	2003 Y-T-D	% CHANGE	2002 Y-T-D	2003 Y-T-D	% CHANGE	2002 Y-T-D	2003 Y-T-D	% CHANGE
Murder/Non-Negligent Manslaughter	15	10	-33.3%	0	0	NA	15	10	-33.3%
Negligent & Vehicular Manslaughter	0	0	NA	0	0	NA	0	0	NA
Rape	4	2	-50.0%	0	0	NA	4	2	-50.0%
Robbery	58	58	0.0%	30	20	-33.3%	88	78	-11.4%
Aggravated Assault	287	347	20.9%	48	54	12.5%	335	401	19.7%
Burglary	94	73	-22.3%	46	30	-34.8%	140	103	-26.4%
Larceny	303	221	-27.1%	94	113	20.2%	397	334	-15.9%
Vehicle Theft	28	25	-10.7%	31	84	171.0%	59	109	84.7%
Non-Aggravated Assault	257	286	11.3%	151	147	-2.6%	408	433	6.1%
Arson	1	5	400.0%	5	7	40.0%	6	12	100.0%
Forgery/Counterfiet	19	12	-36.8%	0	0	NA	19	12	-36.8%
Fraud	122	70	-42.6%	1	2	100.0%	123	72	-41.5%
Embezzlement	33	20	-39.4%	1	2	100.0%	34	22	-35.3%
Stolen Property	75	101	34.7%	21	29	38.1%	96	130	35.4%
Vandalism	26	33	26.9%	29	22	-24.1%	55	55	0.0%
Weapons	83	80	-3.6%	8	7	-12.5%	91	87	-4.4%
Prostitution	36	26	-27.8%	0	0	NA	36	26	-27.8%
Sex Offenses	31	23	-25.8%	5	6	20.0%	36	29	-19.4%
Drugs	555	585	5.4%	60	69	15.0%	615	654	6.3%
Gambling	0	2	NA	0	0	NA	0	2	NA
Offenses vs. Family	24	4	-83.3%	0	0	NA	24	4	-83.3%
DUI	401	304	-24.2%	5	1	-80.0%	406	305	-24.9%
Liquor	27	22	-18.5%	1	3	200.0%	28	25	-10.7%
Disorder.Conduct	80	69	-13.8%	30	59	96.7%	110	128	16.4%
Other Non-Traffic	900	1111	23.4%	121	114	-5.8%	1021	1225	20.0%
VIOLENT INDEX¹	364	417	14.6%	78	74	-5.1%	442	491	11.1%
PROPERTY INDEX²	426	324	-23.9%	176	234	33.0%	602	558	-7.3%
INDEX SUBTOTAL	790	741	-6.2%	254	308	21.3%	1044	1049	0.5%
PART 2 SUBTOTAL³	2669	2748	3.0%	433	461	6.5%	3102	3209	3.4%
TOTAL	3459	3489	0.9%	687	769	11.9%	4146	4258	2.7%

¹Violent Index includes murder and non-negligent manslaughter, rape, robbery, and aggravated assault.

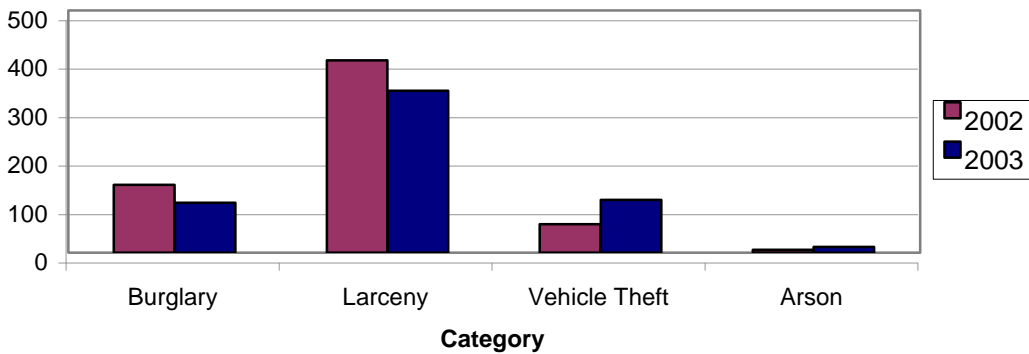
²Property Index includes burglary, larceny, vehicle theft, and arson.

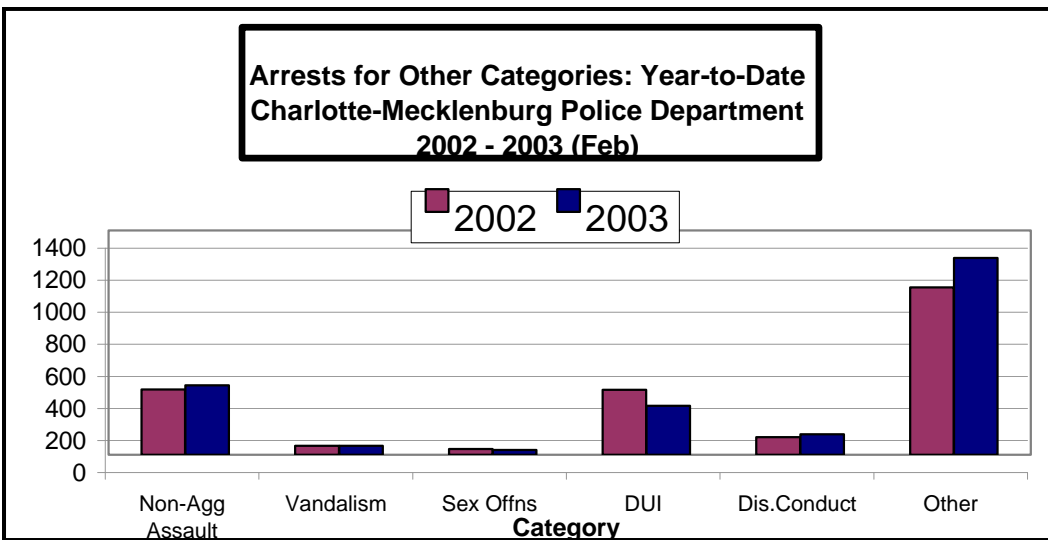
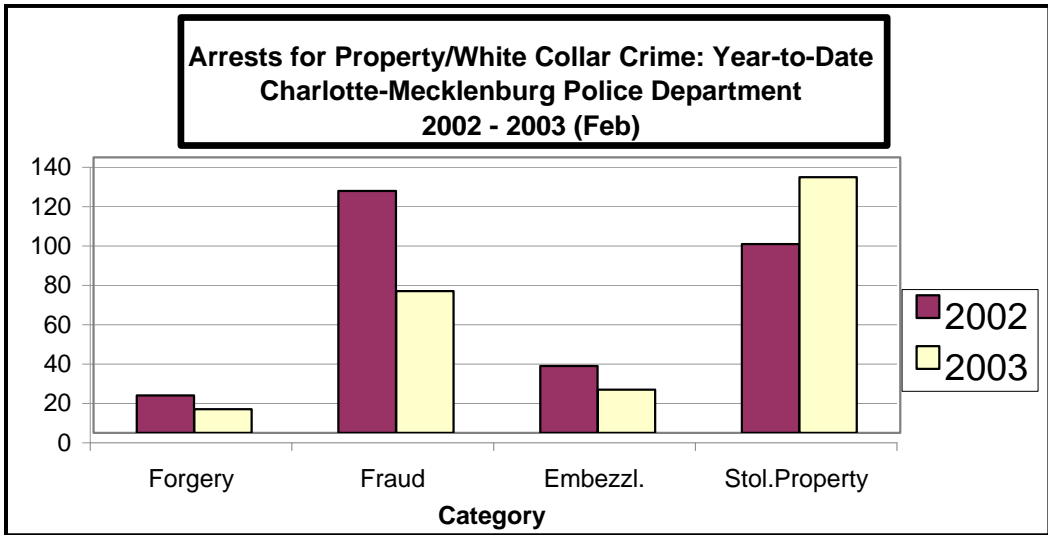
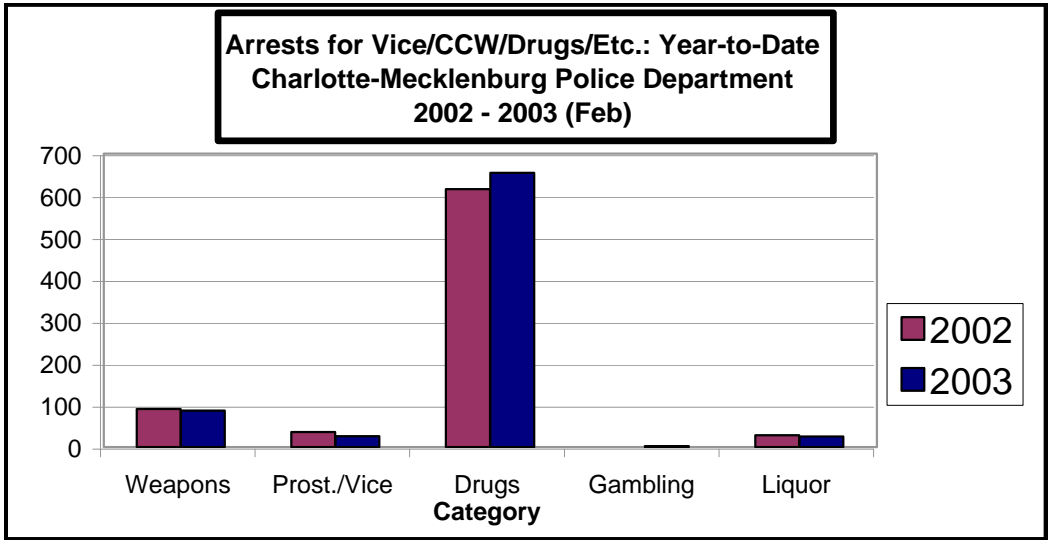
³Part 2 crimes include non-traffic crimes not counted in the Index totals.

**Violent Index Arrests: Year-to-Date
Charlotte-Mecklenburg Police Department
2002-2003 (Feb)**

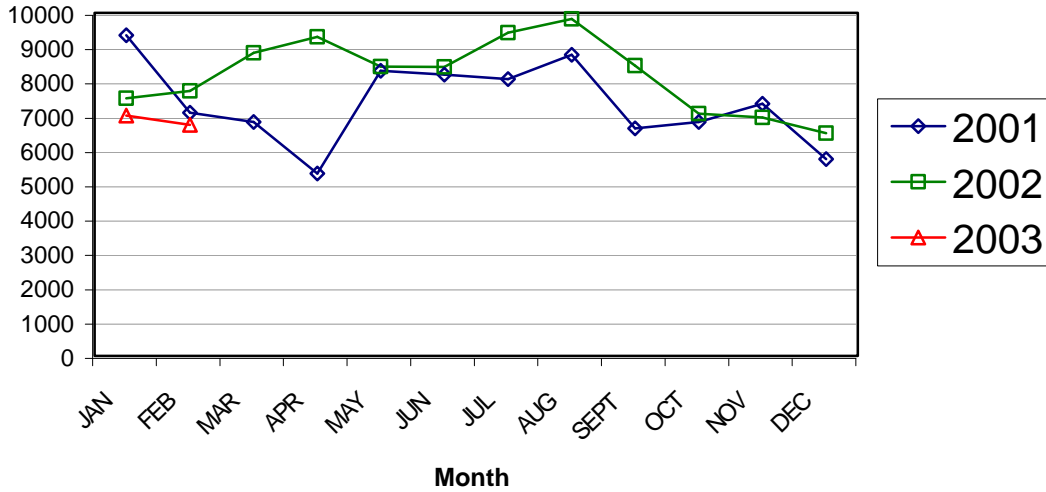


**Property Index Arrests: Year-to-Date
Charlotte-Mecklenburg Police Department
2002-2003 (Feb)**



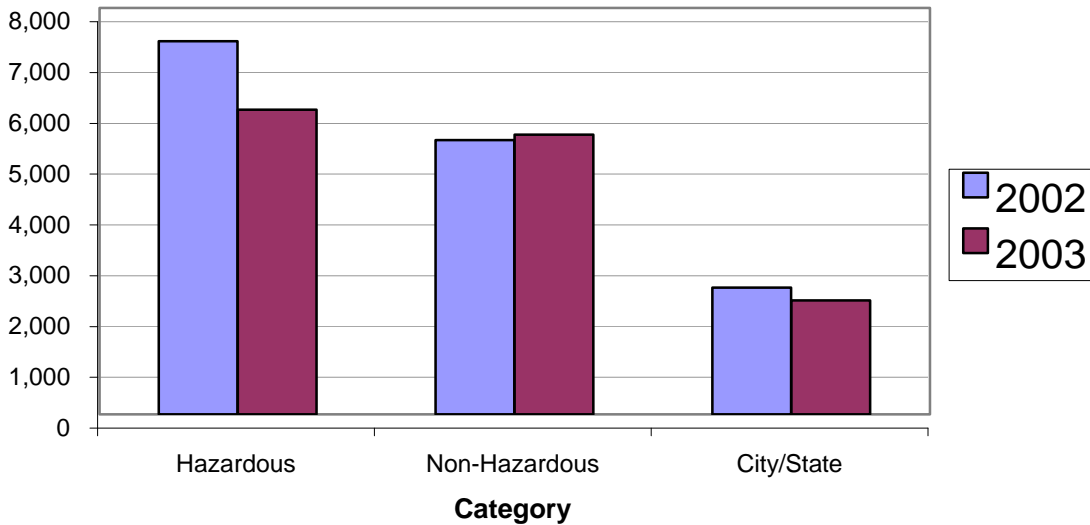


**Total Citation Enforcement by Month
Charlotte-Mecklenburg Police Dept: 2001-2003**

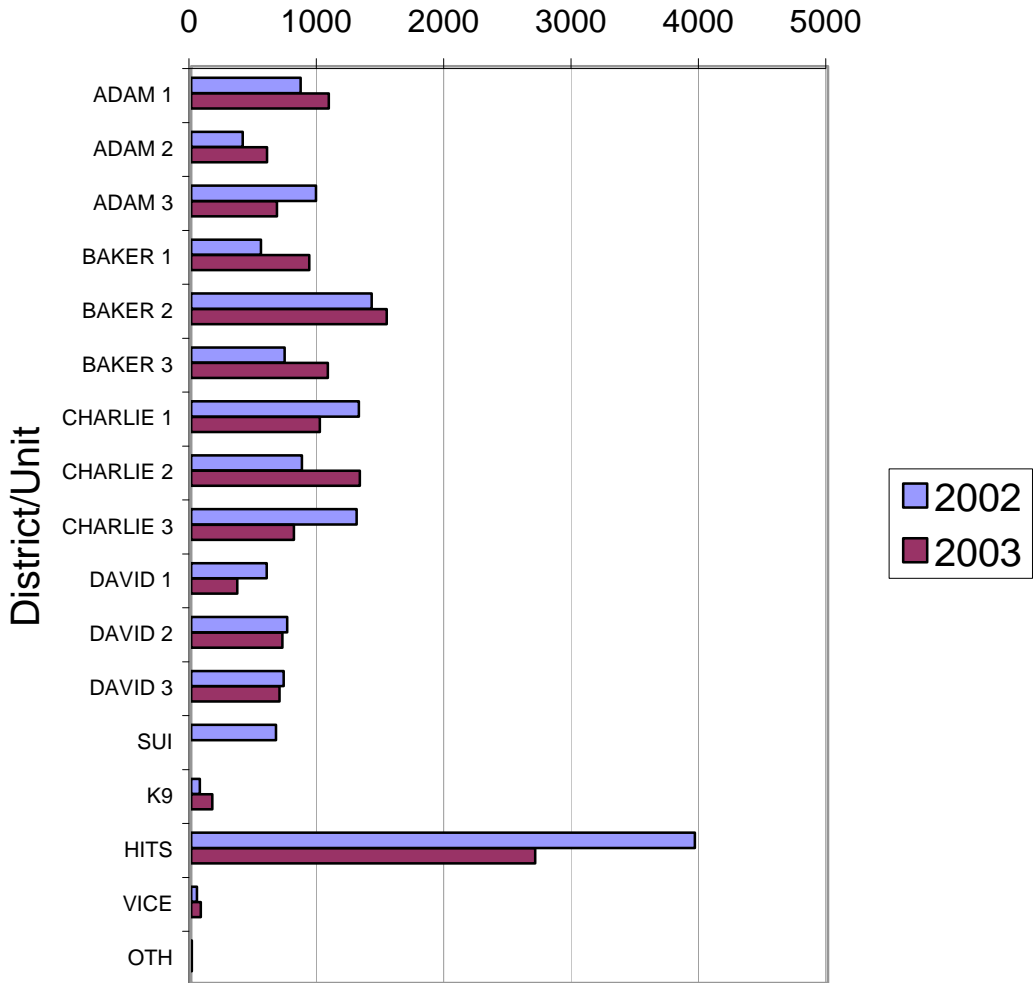


(Includes Hazardous, Non-Hazardous, and City/State Citations)

**CMPD Citation Enforcement by Category
Year-to-Date, 2002 - 2003 (Feb)**



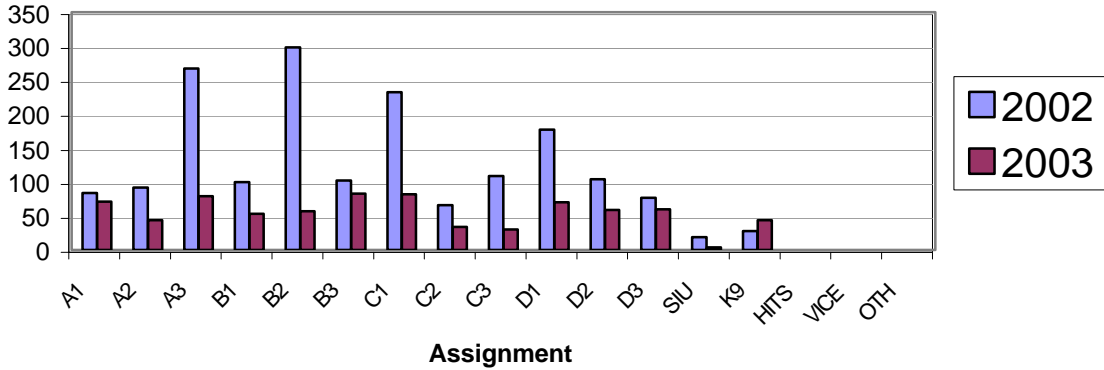
**Citations Issued Year-to-Date by CMPD Districts/Units
2002 - 2003 (Feb)**



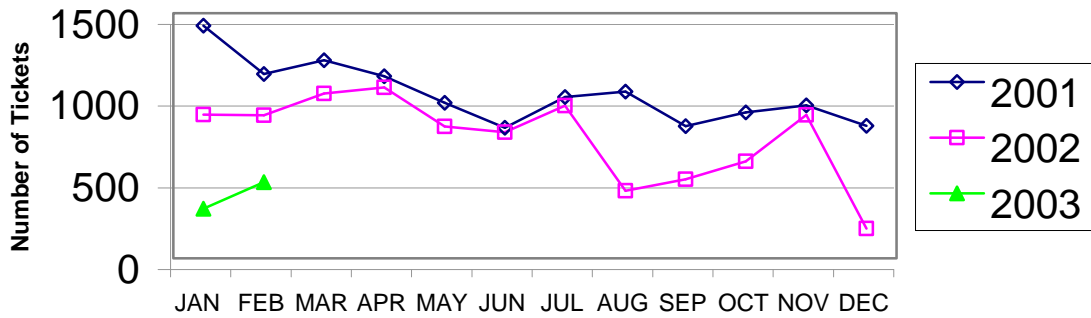
**Citations Issued by the Charlotte Mecklenburg Police Depart Year-to-Date
2002 - 2003 (Feb)**

Total Citations	2002	2003	% Change
Hazardous	7,343	5,994	-18.4%
Non-Hazardous	5,397	5,507	2.0%
Other City/State Statute/Ordinance	2,494	2,242	-10.1%

**Warning Tickets Issued by CMPD District/Unit
Year-to-Date, 2002 - 2003 (Feb)**



**Total Warning Tickets Issued by CMPD
By Month: 2001 - 2003**



**Warning Tickets Issued by CMPD Year-to-Date
Through February, 2003**

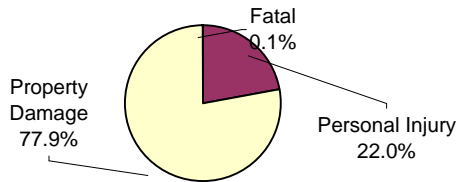
	2002	2003	% Change
Total Warning Tickets	1755	770	-56.1%

**Traffic Collision Reports
Charlotte-Mecklenburg Police Department
Year-to-Date: 2002-2003 (Feb)**

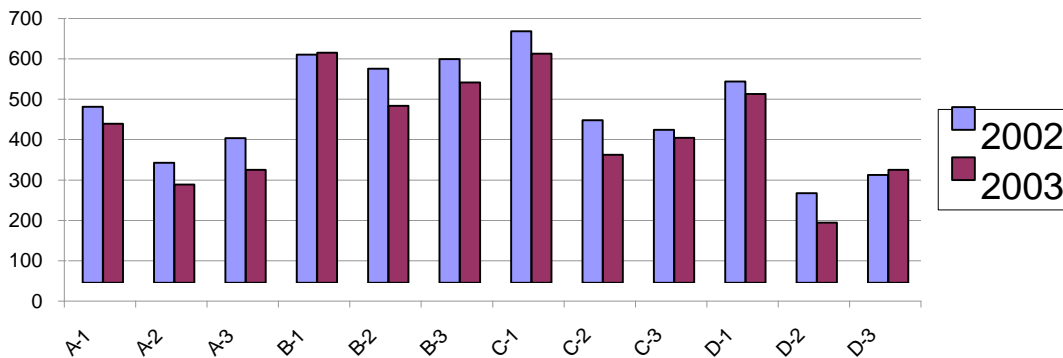
<u>Type</u>	<u>2002</u>	<u>2003</u>	<u>% Change</u>
Fatal Collisions	12	8	-33.3%
Vehicle Occupants Killed	8	9	12.5%
Pedestrians Killed	4	1	-75.0%
Personal Injury Collisions	1194	1007	-15.8%
Property Damage Collisions	3921	3588	-8.5%
Total Collisions	5127	4603	-10.2%

* The number of fatal collisions and the number of persons killed in those incidents is taken from the HITS file. Their records are updated for deaths that occur after the initial report is filed.

**Traffic Collisions Reported by Type
Charlotte-Mecklenburg Police Department:
2003 Year-to-Date (Feb)**



**Traffic Collisions Reported by Charlotte-Mecklenburg Police Dept.
Year-to-Date By Location (District) of Accident : 2002 -2003 (Feb)**



Uniform Crime Reporting Procedures:

The Charlotte-Mecklenburg Police Department reports offense and arrest statistics in accordance with standard Uniform Crime Reporting (UCR) guidelines. UCR policy states that any adjustments to previous months can be made on the current month's report:

...In tabulating crime counts, an agency may find that offense totals for past months require adjustments due to developments in the investigation or other handling of the matter. It may be necessary to adjust totals reported to UCR for the past month or prior months. Needed adjustments can be made on the current month's report and do not affect the reliability of the figures in that such adjustments tend to equalize each other from month to month over a period of time.

- "Uniform Crime Reporting Handbook," FBI, 1984, p. 42-43

We are required to report crime monthly to the UCR program, and we do therefore make an effort to process monthly changes in a timely manner. However, occasionally due to the review and processing required for reclassifying, unfounding or clearing cases, the current month's totals may reflect the processing of a backlog of these changes from previous months.

Users of the data are cautioned that conclusions about substantial changes in crime trends or in clearance rates based on only a single month's data or trend may reflect some of these adjustments. For this reason, in addition to the monthly and year-to-date trends on Page 1, the monthly report routinely includes a comparison for the previous 12 months (p. 4), as well as graphs that provide seasonal/monthly comparisons over a five year period (p. 5-8).

We do make an effort to present the most accurate information available at the time this report is published. However, errors in compiling the charts do sometimes occur, so please notify the Research, Planning, and Analysis office if you have any questions about the data in this report.

This report was compiled with the assistance of Officer David Padgett, who converted a number of the spreadsheets, graphs, and data charts from old software into ne Excel formats.

V. L. Sorban
Research, Planning & Analysis Bureau