

**CHARLOTTE-MECKLENBURG POLICE DEPARTMENT
MONTHLY SUMMARY REPORT
APRIL, 2003**

**Darrel Stephens
Chief of Police**

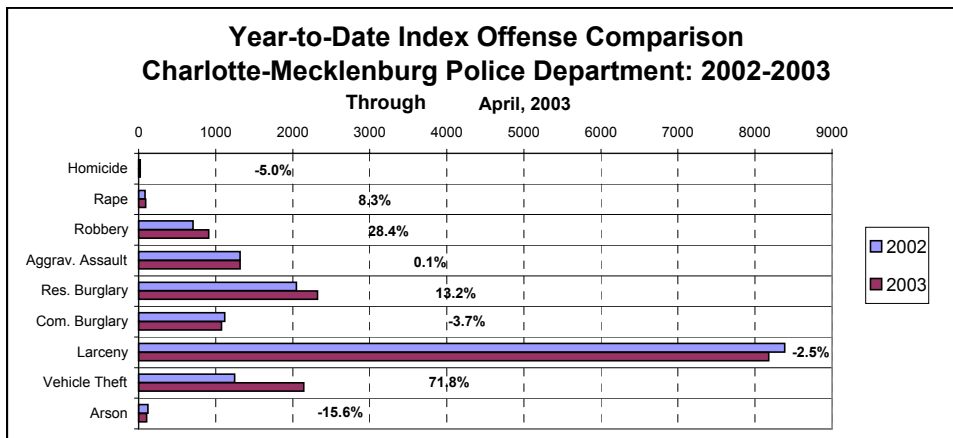
INDEX OFFENSES REPORTED TO CHARLOTTE-MECKLENBURG POLICE DEPARTMENT

April, 2003 INDEX OFFENSES	# THIS MONTH	% OF ALL INDEX	# LAST MONTH	MONTHLY % CHANGE	SAME MONTH LAST YEAR	MONTHLY % CHANGE	THIS YEAR TO DATE	LAST YEAR TO DATE	ANNUAL % CHANGE
HOMICIDE (MURDER & NON-NEGLIGENT MANSLAUGHTER)	6	0.1%	6	0.0%	4	50.0%	19	20	-5.0%
RAPE TOTAL	19	0.5%	27	-29.6%	20	-5.0%	91	84	8.3%
ACTUAL	16	0.4%	26	-38.5%	17	-5.9%	84	74	13.5%
ATTEMPT	3	0.1%	1	200.0%	3	0.0%	7	10	-30.0%
ROBBERY TOTAL	185	4.4%	221	-16.3%	179	3.4%	909	708	28.4%
ARMED	143	3.4%	174	-17.8%	123	16.3%	704	545	29.2%
STRONG-ARM	42	1.0%	47	-10.6%	56	-25.0%	205	163	25.8%
AGGRAVATED ASSAULT TOTAL	322	7.7%	352	-8.5%	394	-18.3%	1316	1315	0.1%
BURGLARY TOTAL	902	21.6%	912	-1.1%	785	14.9%	3396	3166	7.3%
RESIDENTIAL	595	14.2%	629	-5.4%	564	5.5%	2320	2049	13.2%
COMMERCIAL	307	7.3%	283	8.5%	221	38.9%	1076	1117	-3.7%

FORCE	697	16.7%	736	-5.3%	587	18.7%	2727	2393	14.0%
NO FORCE	145	3.5%	103	40.8%	149	-2.7%	448	554	-19.1%
ATTEMPT	60	1.4%	73	-17.8%	49	22.4%	221	219	0.9%
LARCENY TOTAL	2154	51.6%	2111	2.0%	2296	-6.2%	8178	8386	-2.5%
\$200 AND OVER	1084	26.0%	973	11.4%	1072	1.1%	4029	4000	0.7%
\$50 TO \$200	389	9.3%	432	-10.0%	451	-13.7%	1491	1598	-6.7%
UNDER \$50	681	16.3%	706	-3.5%	773	-11.9%	2658	2788	-4.7%

FROM AUTO	1190	28.5%	1109	7.3%	1167	2.0%	4345	4153	4.6%
BICYCLE	22	0.5%	12	83.3%	11	100.0%	45	42	7.1%
SHOPLIFTING	208	5.0%	243	-14.4%	305	-31.8%	855	1107	-22.8%
OTHERS	734	17.6%	747	-1.7%	813	-9.7%	2933	3084	-4.9%
VEHICLE THEFT TOTAL	568	13.6%	509	11.6%	267	112.7%	2141	1246	71.8%
ARSON TOTAL	21	0.5%	20	5.0%	36	-41.7%	103	122	-15.6%
TOTALS	4177	100.0%	4158	0.5%	3981	4.9%	16153	15047	7.4%
VIOLENT PROPERTY	532	12.7%	606	-12.2%	597	-10.9%	2335	2127	9.8%
PROPERTY	3645	87.3%	3552	2.6%	3384	7.7%	13818	12920	7.0%

NOTE: These totals include offenses reported to the Charlotte-Mecklenburg Police Department in accordance with the Uniform Crime Reporting Program. Totals for homicide do not include cases investigated by the police but classed by UCR guidelines as negligent manslaughter or as "justifiable homicide."

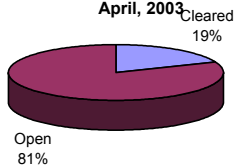


INDEX CLEARANCES REPORTED BY THE CHARLOTTE-MECKLENBURG POLICE DEPARTMENT

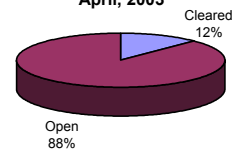
April, 2003 INDEX CLEARANCES	THIS MONTH:		LAST MONTH:		SAME MO. LAST YR:		THIS YEAR TO DATE:		LAST YEAR TO DATE:	
	NO.	%	NO.	%	NO.	%	NO.	%	NO.	%
MURDER & NON-NEGLIGENT MANSLAUGHTER	3	50.0%	3	50.0%	2	50.0%	11	57.9%	13	65.0%
RAPE TOTAL	10	52.6%	16	59.3%	5	25.0%	48	52.7%	27	32.1%
ACTUAL	9	56.3%	16	61.5%	5	29.4%	45	53.6%	26	35.1%
ATTEMPT	1	33.3%	0	0.0%	0	0.0%	3	42.9%	1	10.0%
ROBBERY TOTAL	51	27.6%	32	14.5%	41	22.9%	171	18.8%	177	25.0%
ARMED	39	27.3%	21	12.1%	22	17.9%	118	16.8%	134	24.6%
STRONG-ARM	12	28.6%	11	23.4%	19	33.9%	53	25.9%	43	26.4%
AGGRAVATED ASSAULT TOTAL	166	51.6%	174	49.4%	129	32.7%	664	50.5%	574	43.7%
BURGLARY TOTAL	104	11.5%	120	13.2%	58	7.4%	339	10.0%	344	10.9%
RESIDENTIAL	80	13.4%	65	10.3%	48	8.5%	232	10.0%	264	12.9%
COMMERCIAL	24	7.8%	55	19.4%	10	4.5%	107	9.9%	80	7.2%
LARCENY TOTAL	240	11.1%	274	13.0%	235	10.2%	993	12.1%	927	11.1%
FROM AUTO	29	2.4%	39	3.5%	15	1.3%	129	3.0%	80	1.9%
BICYCLE	3	13.6%	1	8.3%	1	9.1%	7	15.6%	6	14.3%
SHOPLIFTING	117	56.3%	118	48.6%	153	50.2%	472	55.2%	589	53.2%
OTHERS	91	12.4%	116	15.5%	66	8.1%	385	13.1%	252	8.2%
VEHICLE THEFT TOTAL	80	14.1%	91	17.9%	58	21.7%	357	16.7%	271	21.7%
ARSON TOTAL	4	19.0%	9	45.0%	5	13.9%	35	34.0%	38	31.1%
TOTALS	658	15.8%	719	17.3%	533	13.4%	2618	16.2%	2371	15.8%
VIOLENT PROPERTY	230	43.2%	225	37.1%	177	29.6%	894	38.3%	791	37.2%
	428	11.7%	494	13.9%	356	10.5%	1724	12.5%	1580	12.2%

NOTE: Clearances are reported in accordance with Uniform Crime Report guidelines. Since clearances are not counted until they are entered into the Records system, any delays in processing may result in some clearances being reported in succeeding months.

**Year-to-Date Violent Index Clearance Rate
Charlotte-Mecklenburg Police Department: 2003
April, 2003**

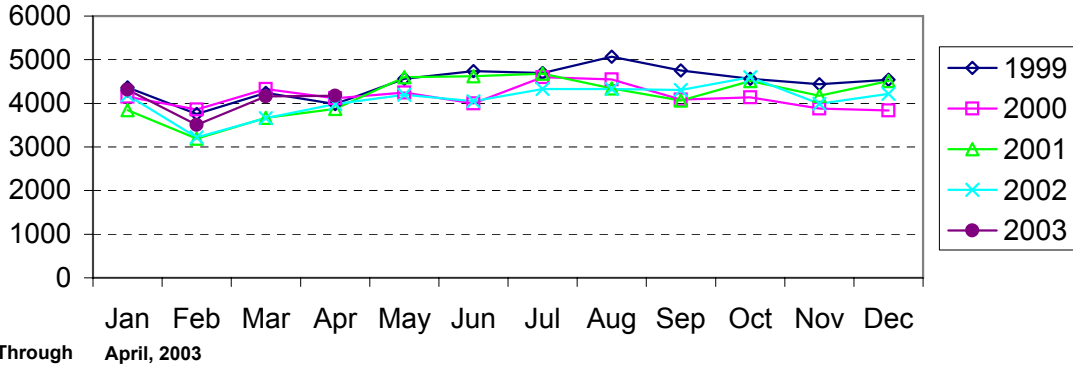


**Year-to-Date Property Index Clearance Rate
Charlotte-Mecklenburg Police Department: 2003
April, 2003**

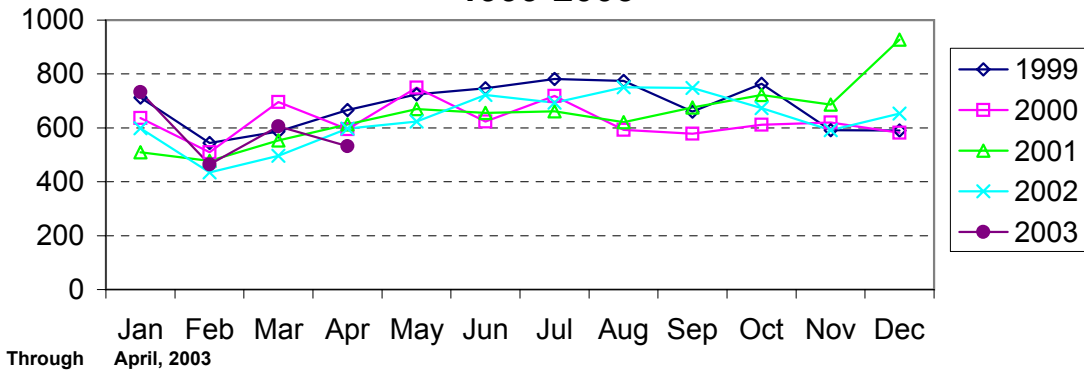


Clearance rates for crime reporting are calculated by dividing the number of crimes cleared during a designated time span by the number of crimes reported in the same period and converting the result to a percentage (multiplying by 100). Since cases from previous reporting periods can be cleared during the designated time span, the rate may be higher than 100%.

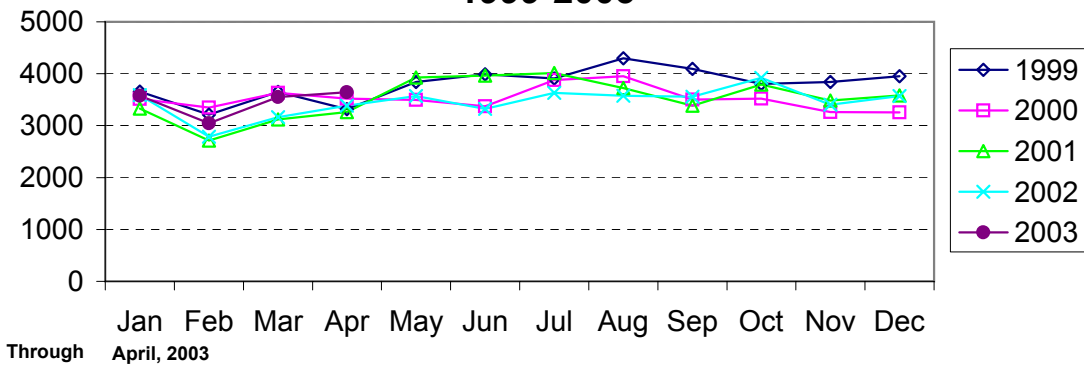
Index Offenses Reported by Month Charlotte-Mecklenburg Police Department: 1999-2003



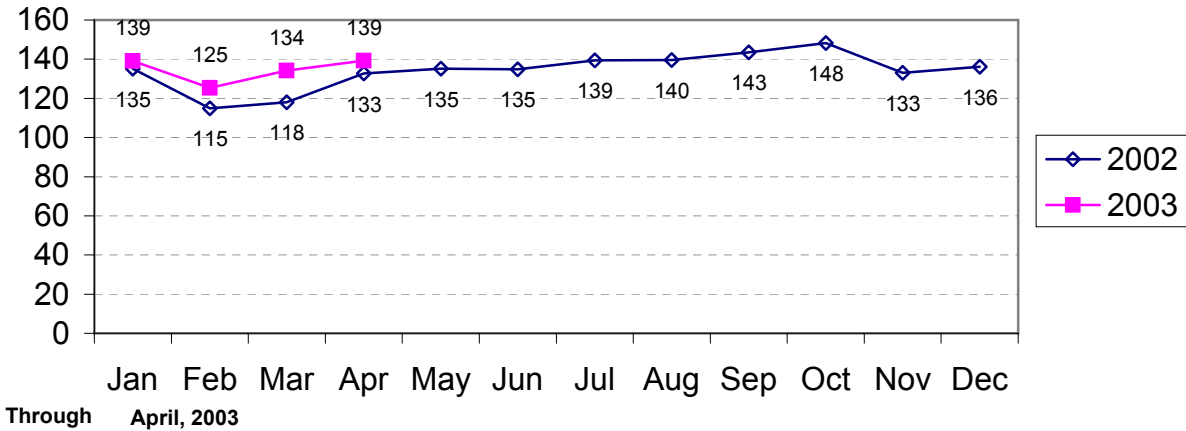
Violent Index Offenses Reported by Month Charlotte-Mecklenburg Police Department: 1999-2003



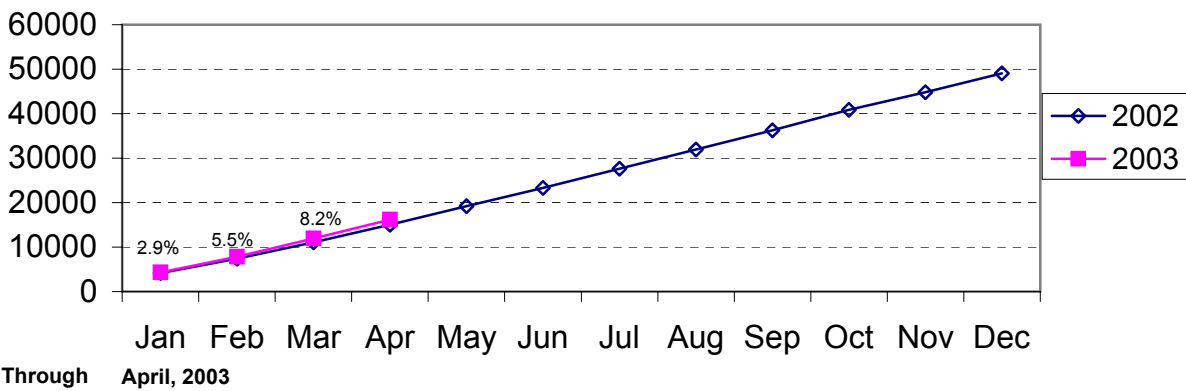
Property Index Offenses Reported by Month Charlotte-Mecklenburg Police Department: 1999-2003



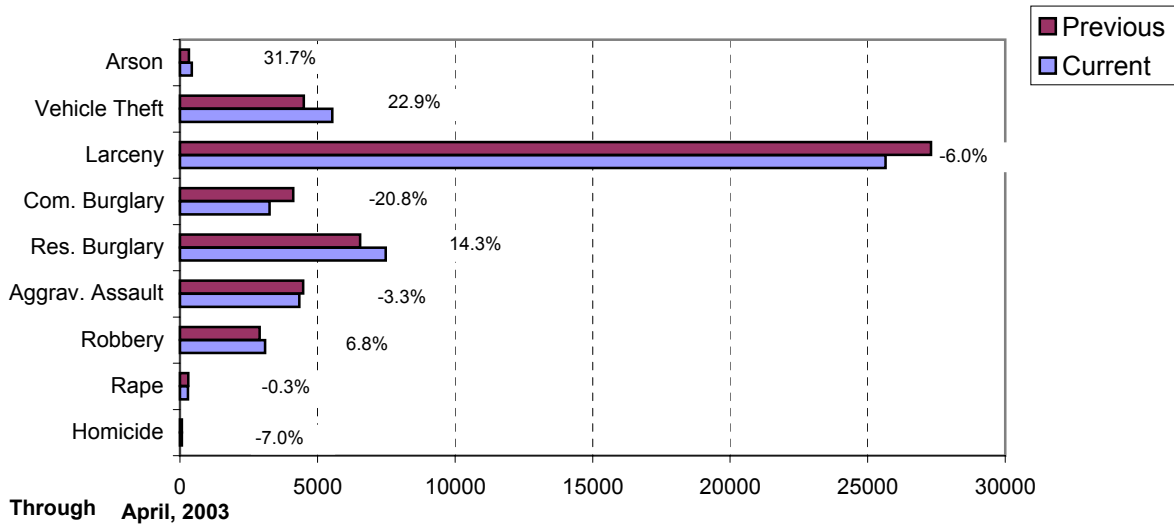
Index Offense Per Day Average by Month Charlotte-Mecklenburg Police Department: 2002-2003



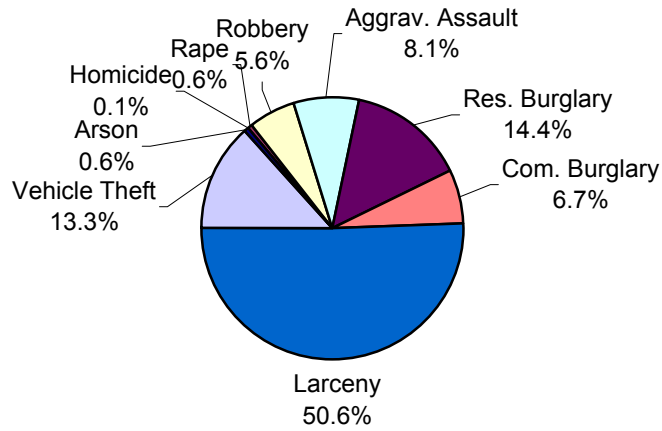
Index Offenses Year-to-Date Cumulative Totals Charlotte-Mecklenburg Police Department: 2002-2003



**Index Offenses in Current and Previous 12 Months
Charlotte-Mecklenburg Police Department:
2002-2003**

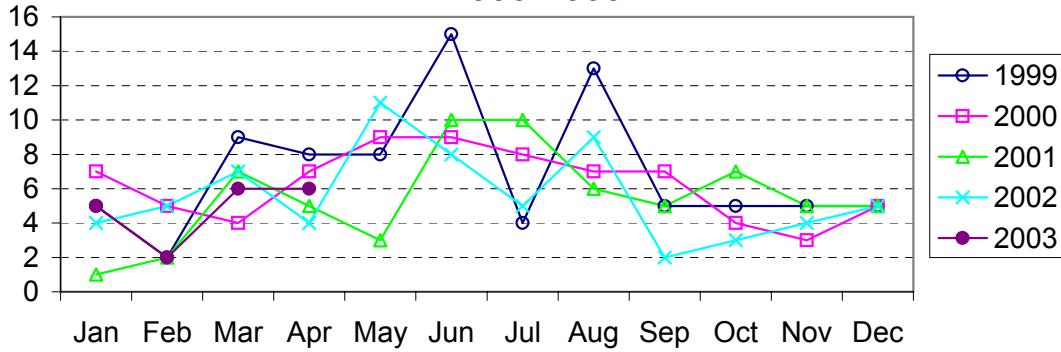


**Year-to-Date Index Offenses by Type
Charlotte-Mecklenburg Police Department: 2003**



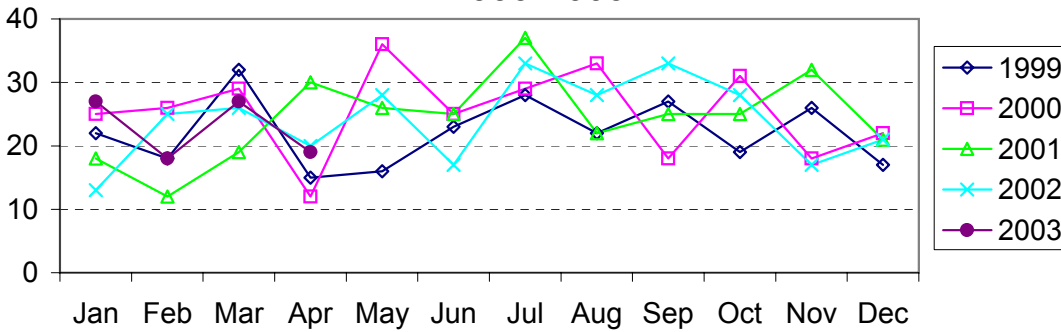
Through April, 2003

Homicide Reported by Month Charlotte-Mecklenburg Police Department: 1999-2003



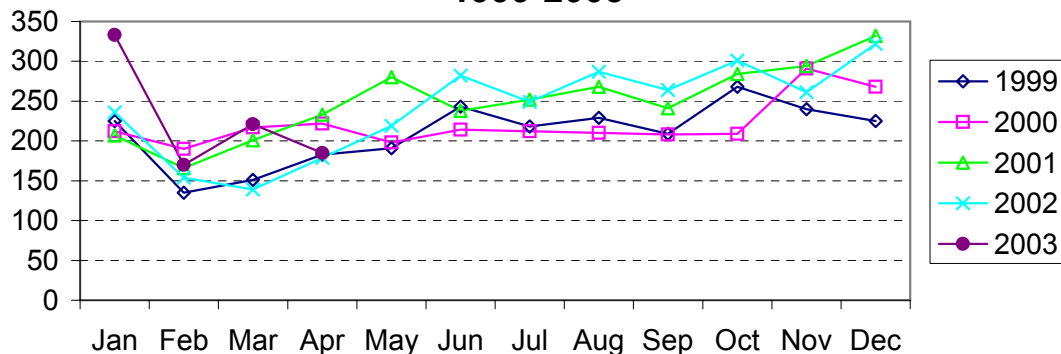
Through April, 2003

Rape Reported by Month Charlotte-Mecklenburg Police Department: 1999-2003



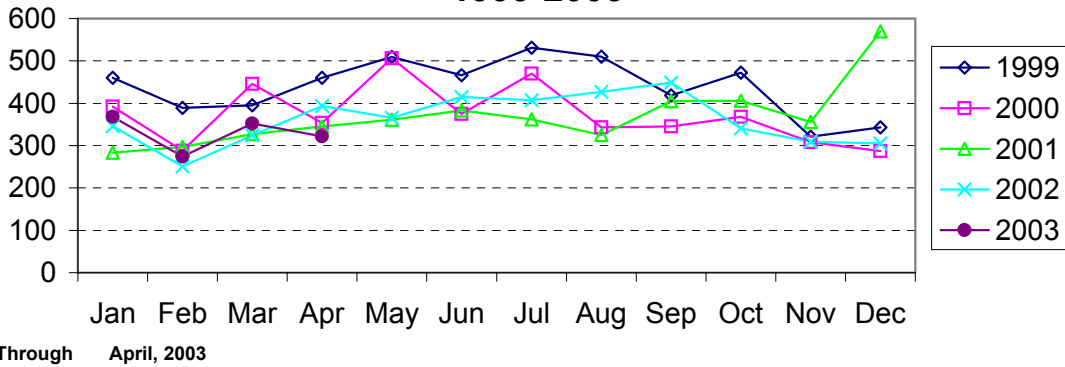
Through April, 2003

Robbery Reported by Month Charlotte-Mecklenburg Police Department: 1999-2003

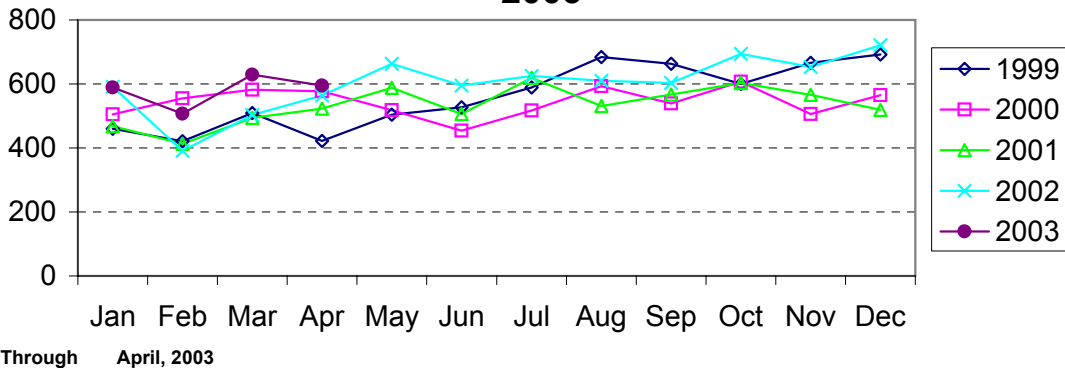


Through April, 2003

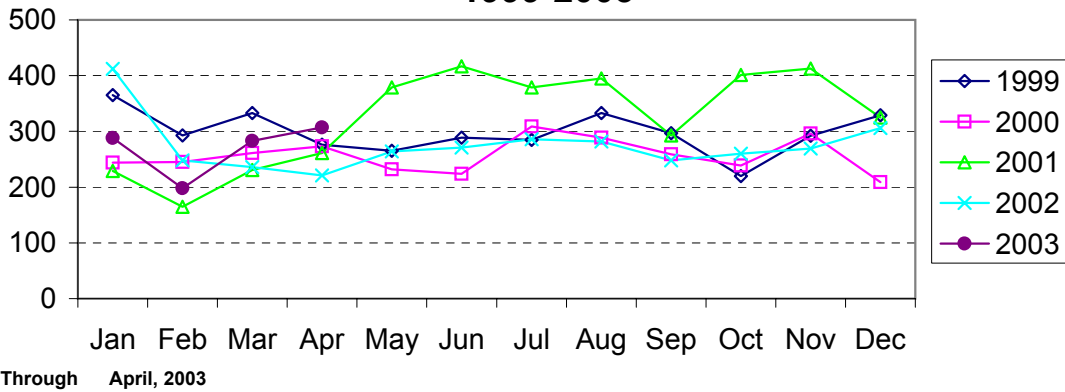
Aggravated Assault Reported by Month Charlotte-Mecklenburg Police Department: 1999-2003



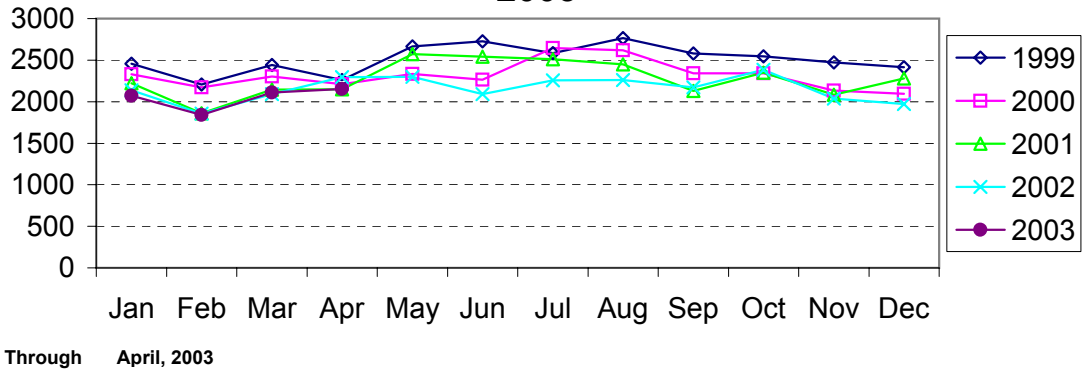
Residential Burglary Reported by Month Charlotte-Mecklenburg Police Department: 1999- 2003



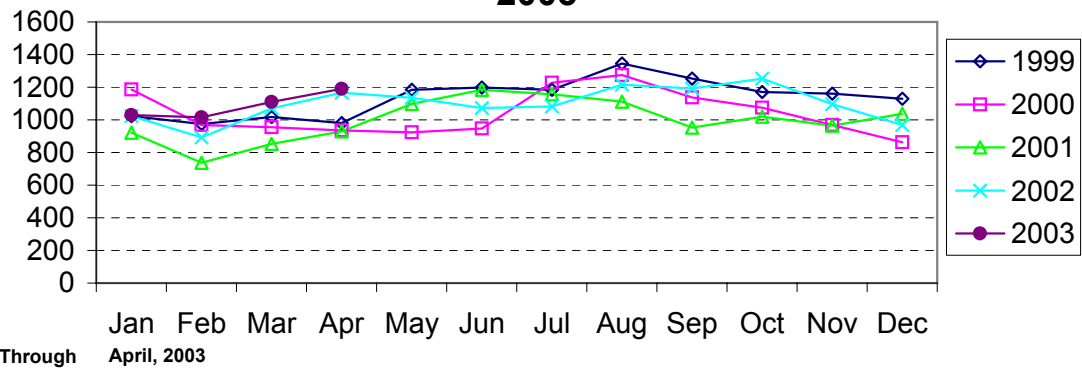
Commercial Burglary Reported by Month Charlotte-Mecklenburg Police Department: 1999-2003



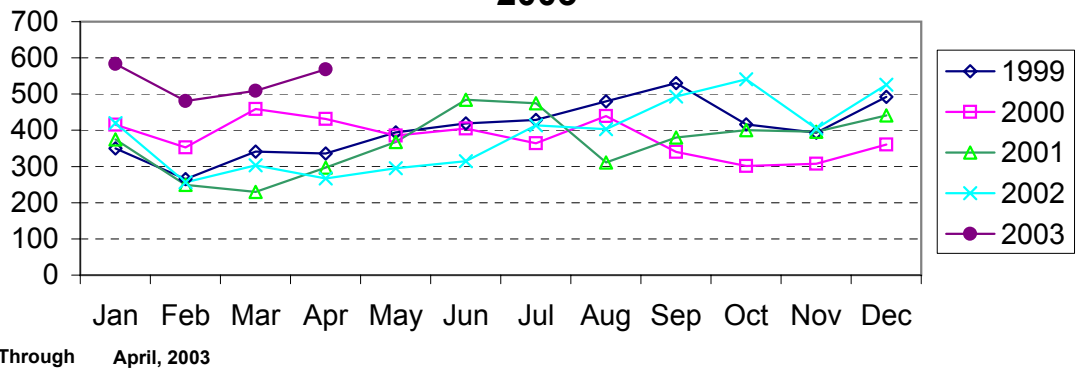
Larceny Reported by Month Charlotte-Mecklenburg Police Department: 1999-2003



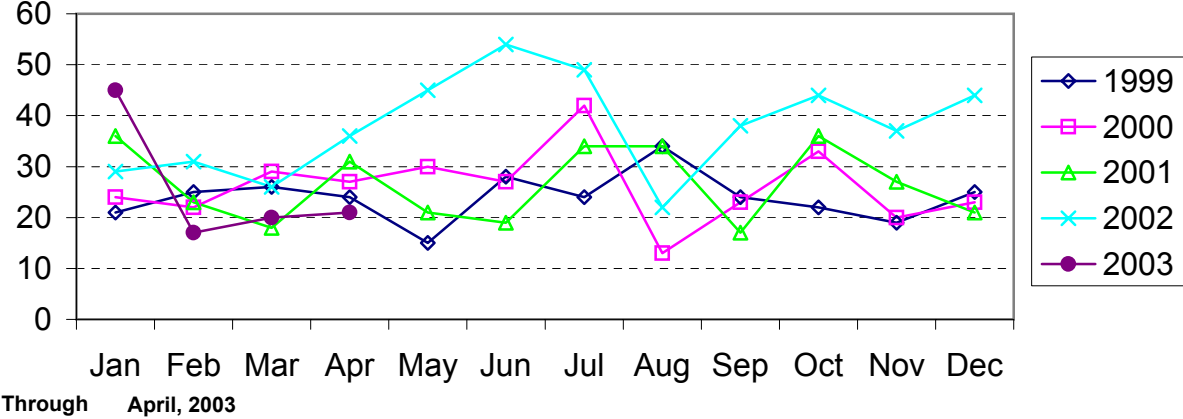
Larceny from Vehicle Reported by Month Charlotte-Mecklenburg Police Department: 1999-2003



Vehicle Theft Reported by Month Charlotte-Mecklenburg Police Department: 1999-2003



Arson Reported by Month Charlotte-Mecklenburg Police Department: 1999-2003



Index Offenses Reported by District and Service Area of Occurrence									
West Service Area: Jan-Apr, 2002-2003									
INDEX_CATEGORIES	Adam 2			Adam3			West Service Area		
	2002	2003	% Change	2002	2003	% Change	2002	2003	% Change
MURDER & NON-NEGLIGENT MANSLAUGHTER	2	1	-50.0%	1	1	0.0%	3	2	-33.3%
RAPE	8	6	-25.0%	6	14	133.3%	14	20	42.9%
ACTUAL	7	6	-14.3%	5	12	140.0%	12	18	50.0%
ATTEMPTED	1	0	-100.0%	1	2	100.0%	2	2	0.0%
ROBBERY	61	79	29.5%	62	78	25.8%	123	157	27.6%
ARMED	47	58	23.4%	54	55	1.9%	101	113	11.9%
STRONG-ARM	14	21	50.0%	8	23	187.5%	22	44	100.0%
AGGRAVATED ASSAULT	127	134	5.5%	125	174	39.2%	252	308	22.2%
BURGLARY	273	277	1.5%	343	434	26.5%	616	711	15.4%
RESIDENTIAL	162	178	9.9%	194	260	34.0%	356	438	23.0%
COMMERCIAL	111	99	-10.8%	149	174	16.8%	260	273	5.0%
LARCENY	478	459	-4.0%	645	667	3.4%	1123	1126	0.3%
FROM AUTO	245	228	-6.9%	313	318	1.6%	558	546	-2.2%
BICYCLE	3	3	0.0%	2	3	50.0%	5	6	20.0%
SHOPLIFTING	58	58	0.0%	71	55	-22.5%	129	113	-12.4%
OTHERS	172	170	-1.2%	259	291	12.4%	431	461	7.0%
VEHICLE THEFT	82	135	64.6%	186	243	30.6%	268	378	41.0%
ARSON	4	7	75.0%	13	17	30.8%	17	24	41.2%
TOTALS	1035	1098	6.1%	1381	1628	17.9%	2416	2726	12.8%
VIOLENT	198	220	11.1%	194	267	37.6%	392	487	24.2%
PROPERTY	837	878	4.9%	1187	1361	14.7%	2024	2239	10.6%

Index Offenses Reported by District and Service Area of Occurrence									
Southeast Service Area: Jan-Apr, 2002-2003									
INDEX_CATEGORIES	Baker 1			Baker 3			Southeast Service Area		
	2002	2003	% Change	2002	2003	% Change	2002	2003	% Change
MURDER & NON-NEGLIGENT MANSLAUGHTER	1	0	-100.0%	2	2	0.0%	3	2	-33.3%
RAPE	9	5	-44.4%	7	8	14.3%	16	13	-18.8%
ACTUAL	9	5	-44.4%	6	8	33.3%	15	13	-13.3%
ATTEMPTED	0	0	NA	1	0	-100.0%	1	0	-100.0%
ROBBERY	42	44	4.8%	76	83	9.2%	118	127	7.6%
ARMED	29	36	24.1%	62	70	12.9%	91	106	16.5%
STRONG-ARM	13	8	-38.5%	14	14	0.0%	27	22	-18.5%
AGGRAVATED ASSAULT	68	61	-10.3%	100	96	-4.0%	168	157	-6.5%
BURGLARY	211	277	31.3%	354	305	-13.8%	565	582	3.0%
RESIDENTIAL	125	157	25.6%	260	236	-9.2%	385	393	2.1%
COMMERCIAL	86	120	39.5%	94	69	-26.6%	180	189	5.0%
LARCENY	613	559	-8.8%	826	884	7.0%	1439	1443	0.3%
FROM AUTO	253	287	13.4%	428	494	15.4%	681	781	14.7%
BICYCLE	3	1	-66.7%	12	10	-16.7%	15	11	-26.7%
SHOPLIFTING	103	67	-35.0%	105	89	-15.2%	208	156	-25.0%
OTHERS	254	204	-19.7%	281	291	3.6%	535	495	-7.5%
VEHICLE THEFT	69	105	52.2%	123	245	99.2%	192	350	82.3%
ARSON	7	3	-57.1%	24	12	-50.0%	31	15	-51.6%
TOTALS	1020	1054	3.3%	1512	1635	8.1%	2532	2689	6.2%
VIOLENT	120	110	-8.3%	185	189	2.2%	305	299	-2.0%
PROPERTY	900	944	4.9%	1327	1446	9.0%	2227	2390	7.3%

The data in the district breakdowns does not include a small number of offenses in which the location of the offense was unknown or was entered without a valid tract assignment. Districts are not equal in geographic size, demographics, zoning/development, and other factors that influence the rate of crimes committed in an area. Therefore, the comparison of raw offense totals across districts is not advisable.

Index Offenses Reported by District and Service Area of Occurrence									
Northeast Service Area: Jan-Apr, 2002-2003									
INDEX_CATEGORIES	Charlie 1			Charlie 3			Northeast Service Area		
	2002	2003	% Change	2002	2003	% Change	2002	2003	% Change
MURDER & NON-NEGLIGENT MANSLAUGHTER	0	3	NA	1	4	300.0%	1	7	600.0%
RAPE	7	10	42.9%	9	8	-11.1%	16	18	12.5%
ACTUAL	5	9	80.0%	8	7	-12.5%	13	16	23.1%
ATTEMPTED	2	1	-50.0%	1	1	0.0%	3	2	-33.3%
ROBBERY	65	57	-12.3%	74	79	6.8%	139	136	-2.2%
ARMED	47	47	0.0%	61	67	9.8%	108	114	5.6%
STRONG-ARM	17	10	-41.2%	13	12	-7.7%	30	22	-26.7%
AGGRAVATED ASSAULT	125	111	-11.2%	107	109	1.9%	232	220	-5.2%
BURGLARY	278	379	36.3%	386	324	-16.1%	664	703	5.9%
RESIDENTIAL	177	257	45.2%	287	253	-11.8%	464	510	9.9%
COMMERCIAL	101	122	20.8%	99	71	-28.3%	200	193	-3.5%
LARCENY	1312	1126	-14.2%	648	715	10.3%	1960	1841	-6.1%
FROM AUTO	729	693	-4.9%	308	368	19.5%	1037	1061	2.3%
BICYCLE	4	3	-25.0%	3	4	33.3%	7	7	0.0%
SHOPLIFTING	168	101	-39.9%	82	78	-4.9%	250	179	-28.4%
OTHERS	411	329	-20.0%	255	265	3.9%	666	594	-10.8%
VEHICLE THEFT	102	225	120.6%	119	268	125.2%	221	493	123.1%
ARSON	10	12	20.0%	21	13	-38.1%	31	25	-19.4%
TOTALS	1899	1923	1.3%	1365	1520	11.4%	3264	3443	5.5%
VIOLENT	197	181	-8.1%	191	200	4.7%	388	381	-1.8%
PROPERTY	1702	1742	2.4%	1174	1320	12.4%	2876	3062	6.5%

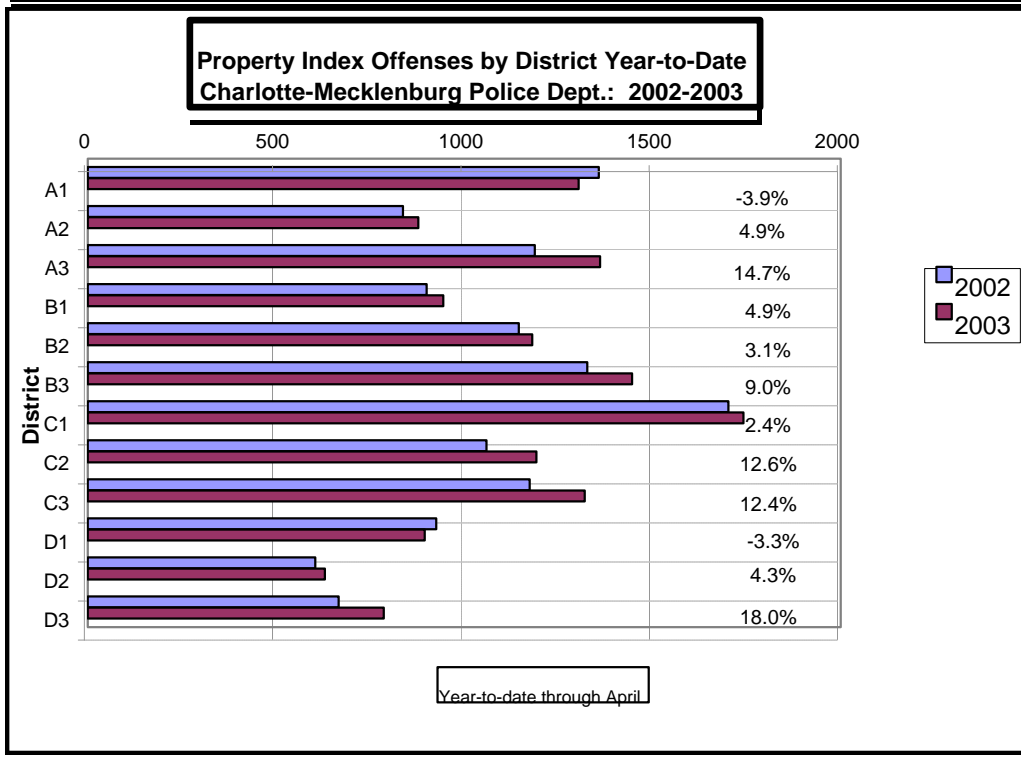
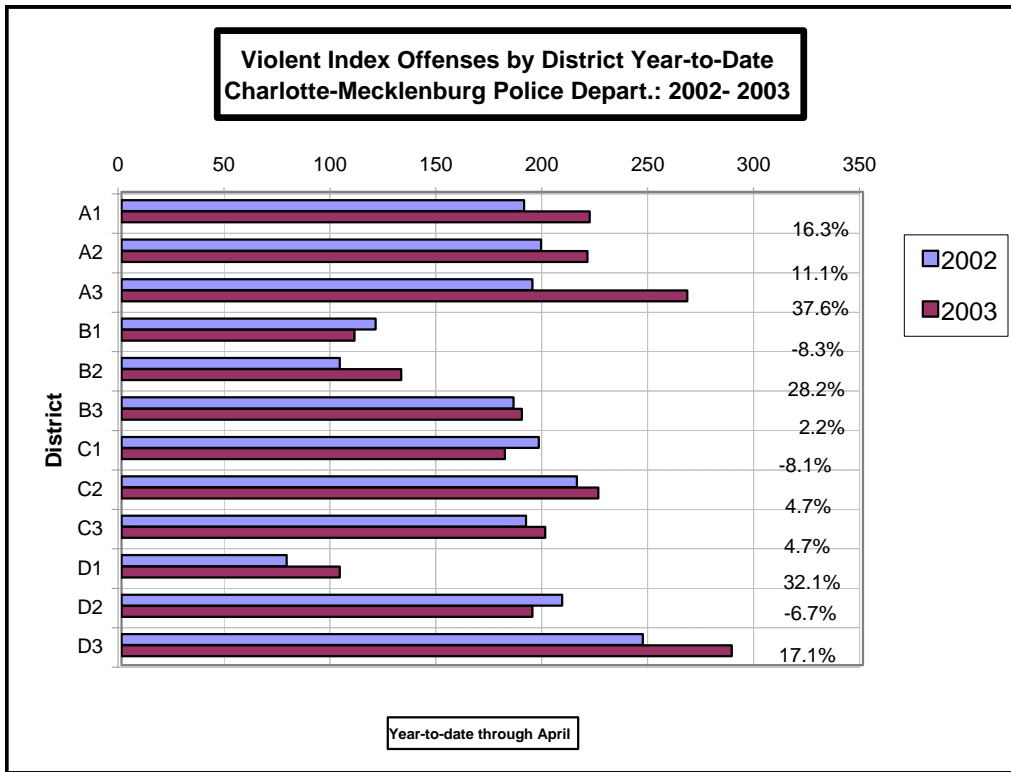
Index Offenses Reported by District and Service Area of Occurrence									
Central Service Area: Jan-Apr, 2002-2003									
INDEX_CATEGORIES	David 1			David 2			Central Service Area		
	2002	2003	% Change	2002	2003	% Change	2002	2003	% Change
MURDER & NON-NEGLIGENT MANSLAUGHTER	1	2	100.0%	5	1	-80.0%	6	3	-50.0%
RAPE	4	4	0.0%	6	7	16.7%	10	11	10.0%
ACTUAL	4	4	0.0%	5	6	20.0%	9	10	11.1%
ATTEMPTED	0	0	NA	1	1	0.0%	1	1	0.0%
ROBBERY	28	33	17.9%	44	68	54.5%	72	101	40.3%
ARMED	10	18	80.0%	35	49	40.0%	45	67	48.9%
STRONG-ARM	18	15	-16.7%	9	19	111.1%	27	34	25.9%
AGGRAVATED ASSAULT	45	64	42.2%	153	118	-22.9%	198	182	-8.1%
BURGLARY	112	125	11.6%	180	200	11.1%	292	325	11.3%
RESIDENTIAL	40	59	47.5%	115	149	29.6%	155	208	34.2%
COMMERCIAL	72	66	-8.3%	65	51	-21.5%	137	117	-14.6%
LARCENY	754	607	-19.5%	329	303	-7.9%	1083	910	-16.0%
FROM AUTO	388	324	-16.5%	158	161	1.9%	546	485	-11.2%
BICYCLE	6	0	-100.0%	0	2	NA	6	2	-66.7%
SHOPLIFTING	31	18	-41.9%	20	10	-50.0%	51	28	-45.1%
OTHERS	329	265	-19.5%	151	130	-13.9%	480	395	-17.7%
VEHICLE THEFT	59	159	169.5%	88	120	36.4%	147	279	89.8%
ARSON	1	4	300.0%	7	7	0.0%	8	11	37.5%
TOTALS	1004	998	-0.6%	812	824	1.5%	1816	1822	0.3%
VIOLENT	78	103	32.1%	208	194	-6.7%	286	297	3.8%
PROPERTY	926	895	-3.3%	604	630	4.3%	1530	1525	-0.3%

The data in the district breakdowns does not include a small number of offenses in which the location of the offense was unknown or was entered without a valid tract assignment. Districts are not equal in geographic size, demographics, zoning/development, and other factors that influence the rate of crimes committed in an area. Therefore, the comparison of raw offense totals across districts is not advisable.

Index Offenses Reported by District and Service Area of Occurrence									
East Service Area: Jan-Apr, 2002-2003									
INDEX_CATEGORIES	Charlie 2			David 3			East Service Area		
	2002	2003	% Change	2002	2003	% Change	2002	2003	% Change
MURDER & NON-NEGLIGENT MANSLAUGHTER	0	1	NA	3	1	-66.7%	3	2	-33.3%
RAPE	4	2	-50.0%	8	8	0.0%	12	10	-16.7%
ACTUAL	3	2	-33.3%	8	8	0.0%	11	10	-9.1%
ATTEMPTED	1	0	-100.0%	0	0	NA	1	0	-100.0%
ROBBERY	91	120	31.9%	81	113	39.5%	172	233	35.5%
ARMED	70	97	38.6%	67	94	40.3%	137	191	39.4%
STRONG-ARM	21	23	9.5%	14	19	35.7%	35	42	20.0%
AGGRAVATED ASSAULT	120	102	-15.0%	154	166	7.8%	274	268	-2.2%
BURGLARY	285	287	0.7%	158	225	42.4%	443	512	15.6%
RESIDENTIAL	224	210	-6.3%	86	162	88.4%	310	372	20.0%
COMMERCIAL	61	77	26.2%	72	63	-12.5%	133	140	5.3%
LARCENY	679	741	9.1%	395	379	-4.1%	1074	1120	4.3%
FROM AUTO	241	369	53.1%	186	211	13.4%	427	580	35.8%
BICYCLE	0	7	NA	2	3	50.0%	2	10	400.0%
SHOPLIFTING	213	152	-28.6%	42	25	-40.5%	255	177	-30.6%
OTHERS	225	213	-5.3%	165	140	-15.2%	390	353	-9.5%
VEHICLE THEFT	91	159	74.7%	107	177	65.4%	198	336	69.7%
ARSON	4	5	25.0%	6	5	-16.7%	10	10	0.0%
TOTALS	1274	1417	11.2%	912	1074	17.8%	2186	2491	14.0%
VIOLENT PROPERTY	215	225	4.7%	246	288	17.1%	461	513	11.3%
	1059	1192	12.6%	666	786	18.0%	1725	1978	14.7%

Index Offenses Reported by District and Service Area of Occurrence									
South Service Area: Jan-Apr, 2002-2003									
INDEX_CATEGORIES	Adam 1			Baker 2			South Service Area		
	2002	2003	% Change	2002	2003	% Change	2002	2003	% Change
MURDER & NON-NEGLIGENT MANSLAUGHTER	3	3	0.0%	1	0	-100.0%	4	3	-25.0%
RAPE	12	11	-8.3%	4	8	100.0%	16	19	18.8%
ACTUAL	10	10	0.0%	4	7	75.0%	14	17	21.4%
ATTEMPTED	2	1	-50.0%	0	1	NA	2	2	0.0%
ROBBERY	51	103	102.0%	33	50	51.5%	84	153	82.1%
ARMED	35	67	91.4%	28	35	25.0%	63	102	61.9%
STRONG-ARM	16	26	62.5%	5	15	200.0%	21	41	95.2%
AGGRAVATED ASSAULT	124	104	-16.1%	65	74	13.8%	189	178	-5.8%
BURGLARY	284	250	-12.0%	289	282	-2.4%	573	532	-7.2%
RESIDENTIAL	162	157	-3.1%	205	224	9.3%	367	381	3.8%
COMMERCIAL	122	93	-23.8%	84	58	-31.0%	206	151	-26.7%
LARCENY	929	875	-5.8%	760	779	2.5%	1689	1654	-2.1%
FROM AUTO	469	418	-10.9%	429	434	1.2%	898	852	-5.1%
BICYCLE	3	6	100.0%	4	3	-25.0%	7	9	28.6%
SHOPLIFTING	154	135	-12.3%	58	58	0.0%	212	193	-9.0%
OTHERS	303	316	4.3%	269	284	5.6%	572	600	4.9%
VEHICLE THEFT	137	174	27.0%	81	110	35.8%	218	284	30.3%
ARSON	7	5	-28.6%	15	10	-33.3%	22	15	-31.8%
TOTALS	1547	1525	-1.4%	1248	1313	5.2%	2795	2838	1.5%
VIOLENT PROPERTY	190	221	16.3%	103	132	28.2%	293	353	20.5%
	1357	1304	-3.9%	1145	1181	3.1%	2502	2485	-0.7%

The data in the district breakdowns does not include a small number of offenses in which the location of the offense was unknown or was entered without a valid tract assignment. Districts are not equal in geographic size, demographics, zoning/development, and other factors that influence the rate of crimes committed in an area. Therefore, the comparison of raw offense totals across districts is not advisable.



The data in the district breakdowns does not include a small number of offenses in which the location of the offense was unknown or was entered without a valid tract assignment. Districts are not equal in geographic size, demographics, zoning/development, and other factors that influence the rate of crimes committed in an area. Therefore, the comparison of raw offense totals across districts is not advisable.

**Arrests by Charlotte-Mecklenburg Police Department
Year-To-Date: 2002-2003
(Through April)**

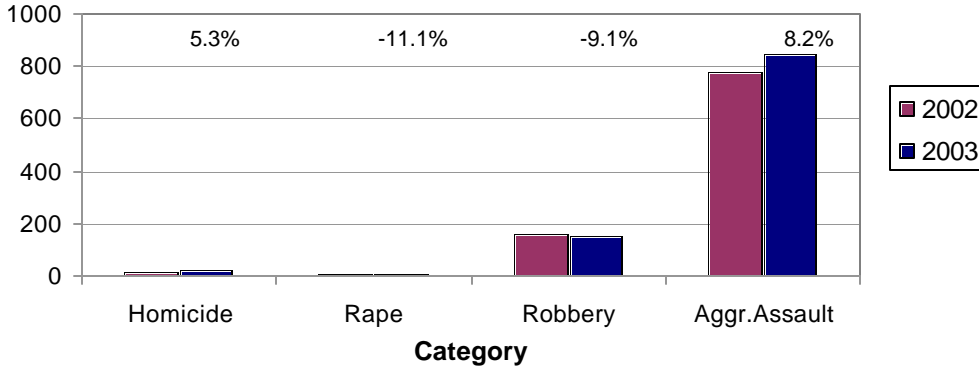
CATEGORY	ADULTS (AGE 18 & OLDER):			JUVENILES (UNDER 18):			TOTAL ARRESTS:		
	2002 Y-T-D	2003 Y-T-D	% CHANGE	2002 Y-T-D	2003 Y-T-D	% CHANGE	2002 Y-T-D	2003 Y-T-D	% CHANGE
Murder/Non-Negligent Manslaughter	19	19	0.0%	0	1	NA	19	20	5.3%
Negligent & Vehicular Manslaughter	2	0	-100.0%	0	0	NA	2	0	-100.0%
Rape	9	8	-11.1%	0	0	NA	9	8	-11.1%
Robbery	113	110	-2.7%	51	39	-23.5%	164	149	-9.1%
Aggravated Assault	684	708	3.5%	97	137	41.2%	781	845	8.2%
Burglary	165	149	-9.7%	75	77	2.7%	240	226	-5.8%
Larceny	563	460	-18.3%	208	225	8.2%	771	685	-11.2%
Vehicle Theft	43	41	-4.7%	46	133	189.1%	89	174	95.5%
Non-Aggravated Assault	559	547	-2.1%	269	311	15.6%	828	858	3.6%
Arson	2	10	400.0%	11	11	0.0%	13	21	61.5%
Forgery/Counterfiet	46	36	-21.7%	0	2	NA	46	38	-17.4%
Fraud	249	166	-33.3%	1	4	300.0%	250	170	-32.0%
Embezzlement	52	34	-34.6%	2	2	0.0%	54	36	-33.3%
Stolen Property	145	178	22.8%	38	61	60.5%	183	239	30.6%
Vandalism	81	85	4.9%	55	62	12.7%	136	147	8.1%
Weapons	164	160	-2.4%	14	22	57.1%	178	182	2.2%
Prostitution	87	47	-46.0%	0	0	NA	87	47	-46.0%
Sex Offenses	111	47	-57.7%	10	18	80.0%	121	65	-46.3%
Drugs	1065	1157	8.6%	124	109	-12.1%	1189	1266	6.5%
Gambling	1	14	1300.0%	0	0	NA	1	14	1300.0%
Offenses vs. Family	24	4	-83.3%	0	0	NA	24	4	-83.3%
DUI	877	661	-24.6%	6	1	-83.3%	883	662	-25.0%
Liquor	96	47	-51.0%	3	4	33.3%	99	51	-48.5%
Disorder.Conduct	161	151	-6.2%	60	113	88.3%	221	264	19.5%
Other Non-Traffic	2178	2333	7.1%	231	269	16.5%	2409	2602	8.0%
VIOLENT INDEX¹	825	845	2.4%	148	177	19.6%	973	1022	5.0%
PROPERTY INDEX²	773	660	-14.6%	340	446	31.2%	1113	1106	-0.6%
INDEX SUBTOTAL	1598	1505	-5.8%	488	623	27.7%	2086	2128	2.0%
PART 2 SUBTOTAL³	5898	5667	-3.9%	813	978	20.3%	6711	6645	-1.0%
TOTAL	7496	7172	-4.3%	1301	1601	23.1%	8797	8773	-0.3%

¹Violent Index includes murder and non-negligent manslaughter, rape, robbery, and aggravated assault.

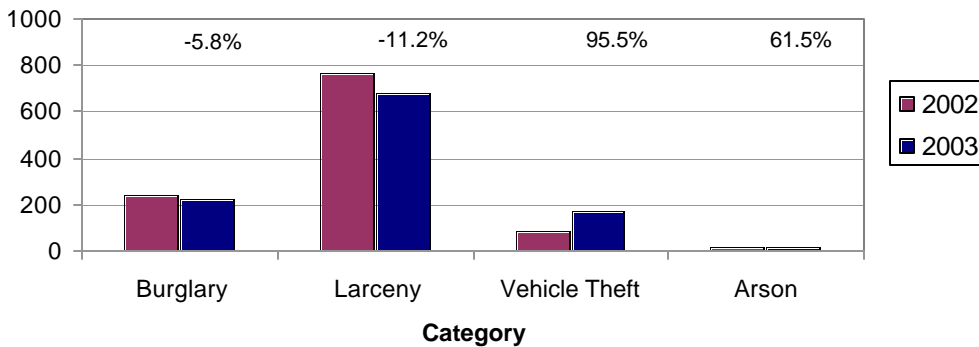
²Property Index includes burglary, larceny, vehicle theft, and arson.

³Part 2 crimes include non-traffic crimes not counted in the Index totals.

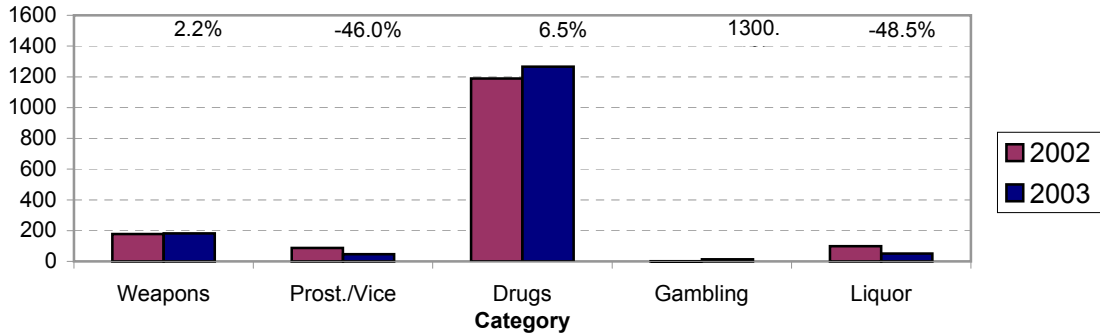
**Violent Index Arrests Year-to-Date
Charlotte-Mecklenburg Police Department: 2002-2003
(Through April)**



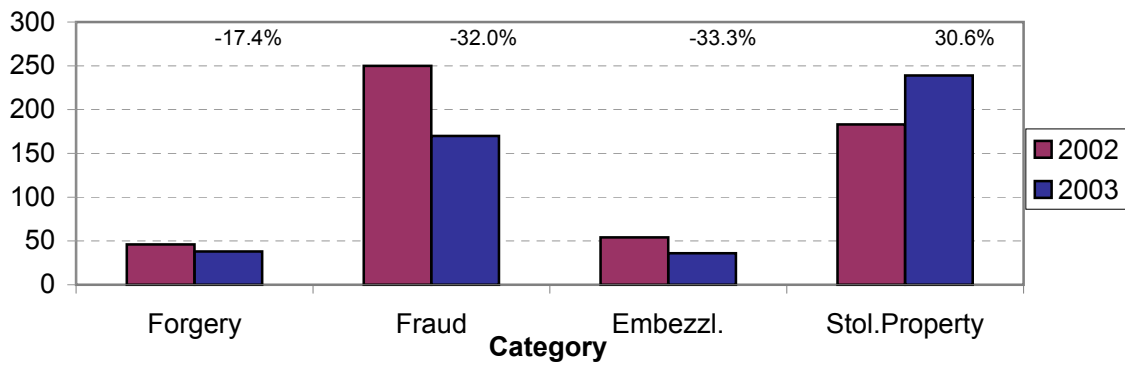
**Property Index Arrests Year-to-Date
Charlotte-Mecklenburg Police Department: 2002-2003
(Through April)**



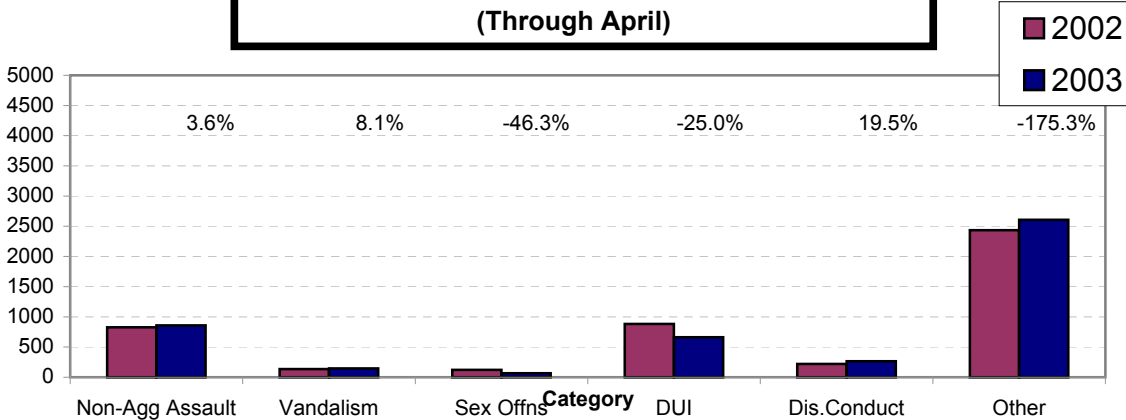
**Arrests for Vice/CCW/Drugs/Etc. Year-to-Date
Charlotte-Mecklenburg Police Department: 2002 - 2003
(Through April)**



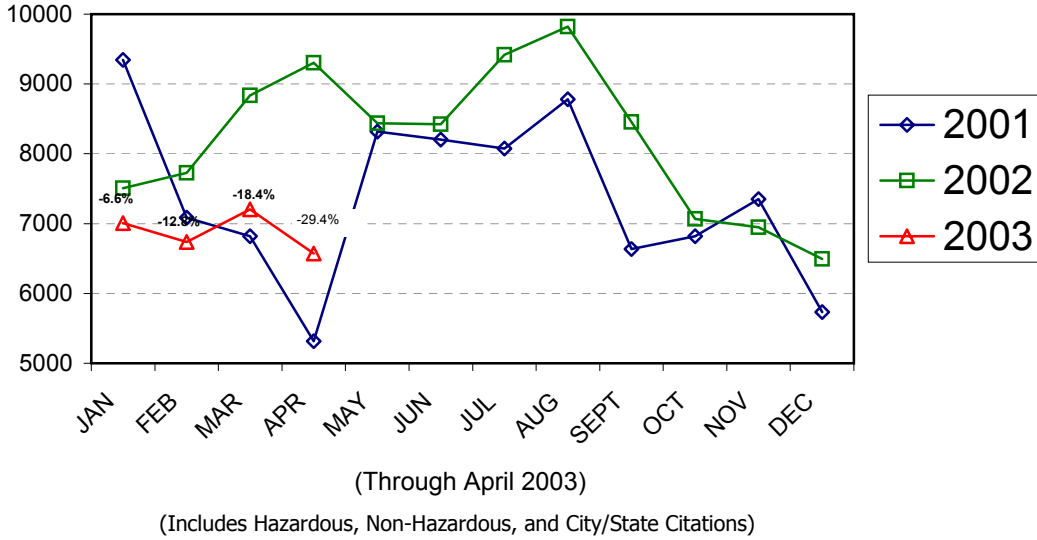
**Arrests for Property/White Collar Crime Year-to-Date
Charlotte-Mecklenburg Police Department: 2002 - 2003
(Through April)**



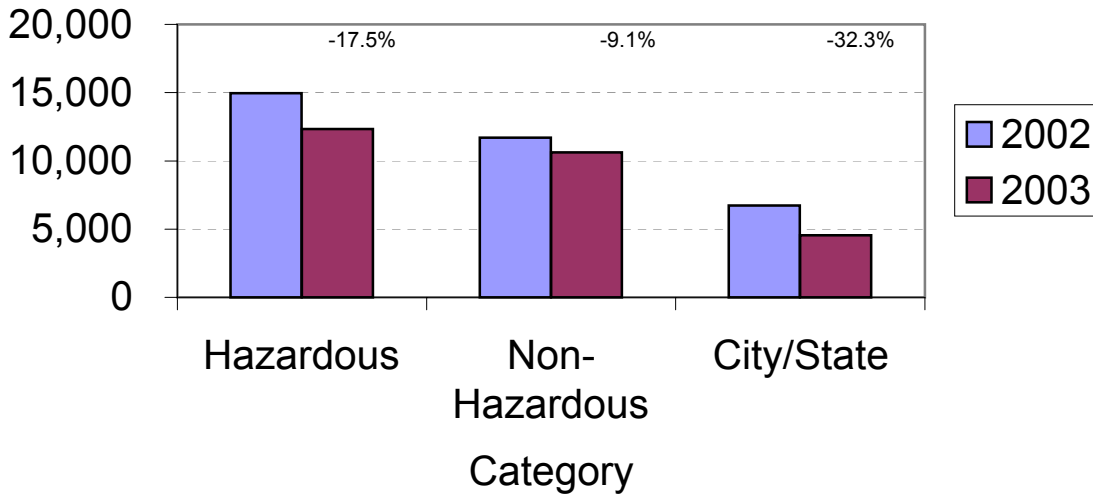
**Arrests for Other Categories Year-to-Date
Charlotte-Mecklenburg Police Department: 2002 - 2003
(Through April)**



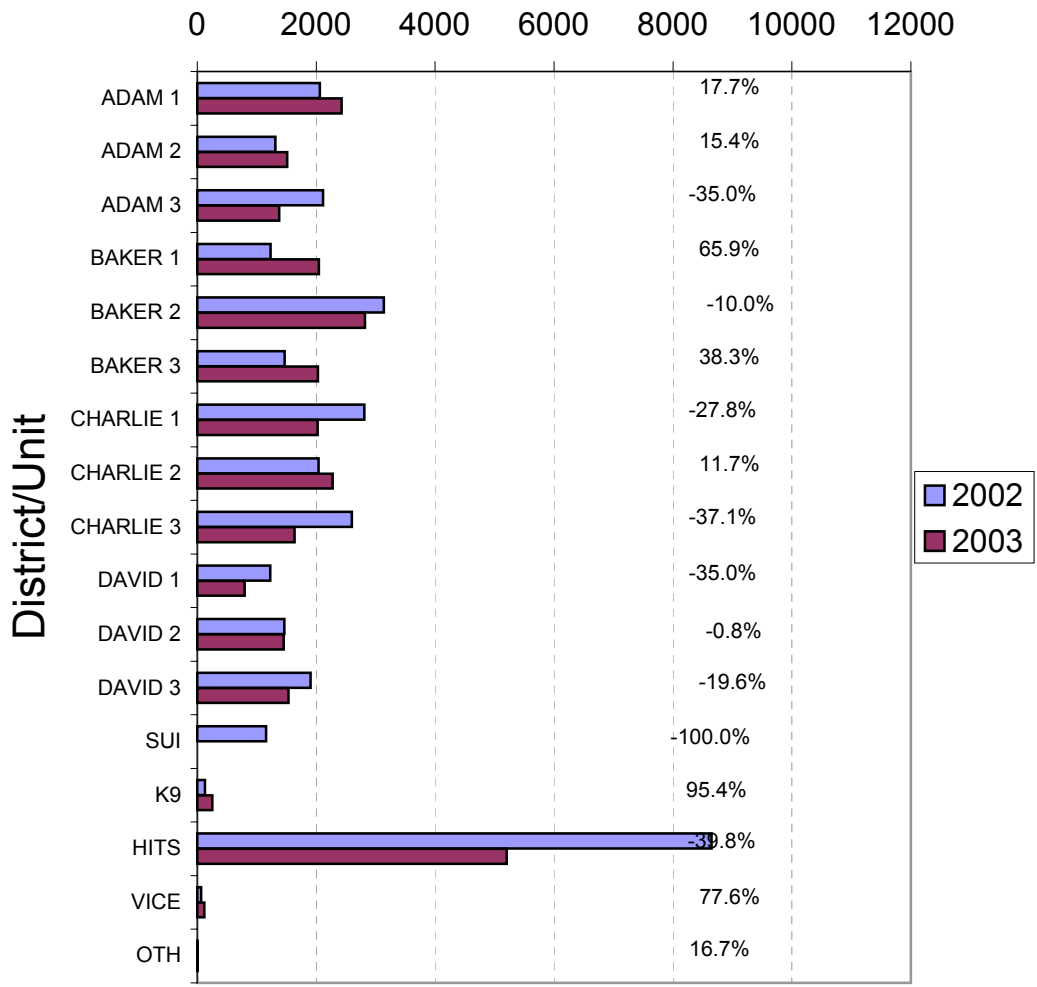
**Total Citation Enforcement by Month
Charlotte-Mecklenburg Police Dept: 2001-2003**



**CMPD Citation Enforcement by Category
Year-to-Date, 2002 - 2003
(Through April 2003)**



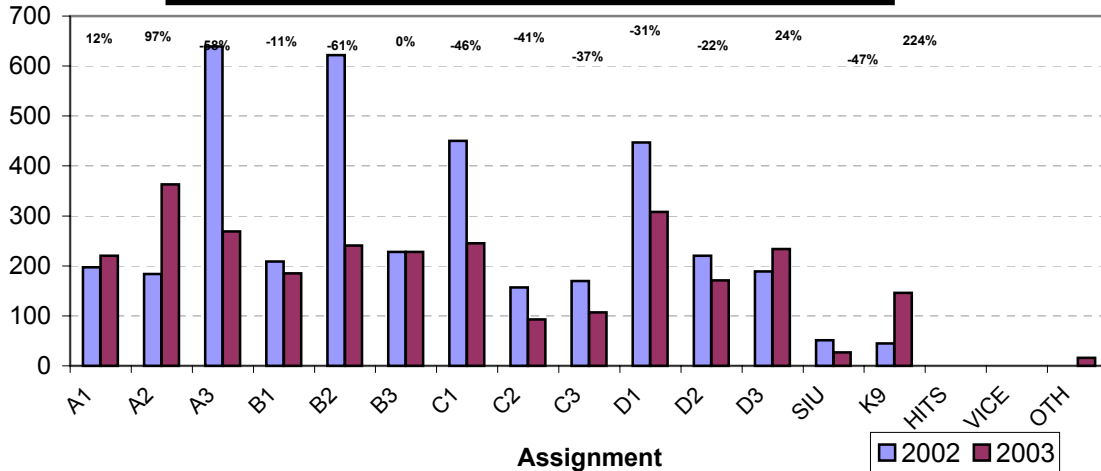
Citations Issued Year-to-Date by CMPD Districts/Units
2002 - 2003
(Through April 2003)



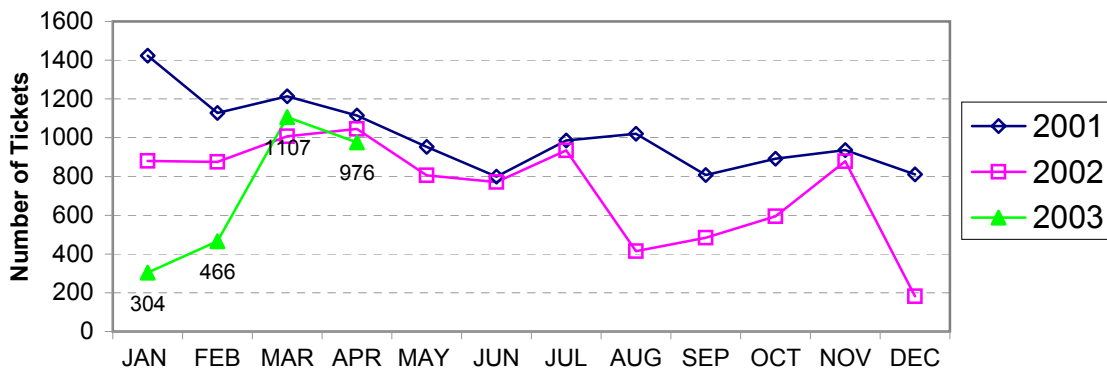
Citations Issued by the Charlotte Mecklenburg Police Depart Year-to-Date
(Through April 2003)

Total Citations	2002	2003	% Change
Hazardous	14,963	12,342	-17.5%
Non-Hazardous	11,691	10,632	-9.1%
Other City/State Statute/Ordinance	6,719	4,546	-32.3%
Total	66,746	55,040	-17.5%

**Warning Tickets Issued by CMPD District/Unit
Year-to-Date, 2002 - 2003
Through April, 2003**



**Total Warning Tickets Issued by CMPD
By Month: 2001 - 2003**



**Warning Tickets Issued by CMPD Year-to-Date
Through April, 2003**

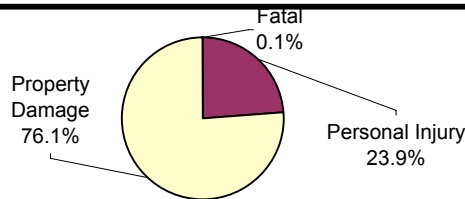
	2002	2003	% Change
Total Warning Tickets	3808	2853	-25.1%

**Traffic Collision Reports
Charlotte-Mecklenburg Police Department
Year-to-Date: 2002-2003
(Through April)**

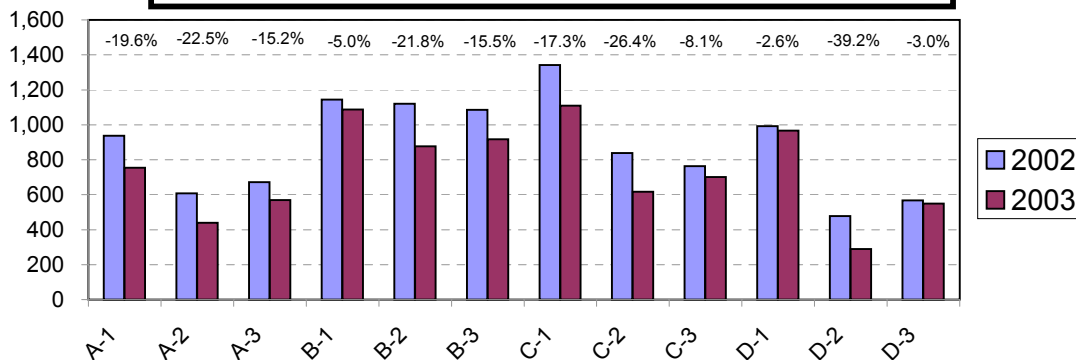
<u>Type</u>	<u>2002</u>	<u>2003</u>	<u>% Change</u>
Fatal Collisions	23	21	-8.7%
Vehicle Occupants Killed	16	23	43.8%
Pedestrians Killed	7	2	-71.4%
Personal Injury Collisions	2507	2121	-15.3%
Property Damage Collisions	8012	6831	-14.7%
Total Collisions	10542	8973	-14.9%

* The number of fatal collisions and the number of persons killed in those incidents is taken from the HITS file. Their records are updated for deaths that occur after the initial report is filed.

**Traffic Collisions Reported by Type
Charlotte-Mecklenburg Police Department:
2003 Year-to-Date
(Through April)**



**Traffic Collisions Reported by Charlotte-Mecklenburg Police Dept.
Year-to-Date By Location (District) of Accident : 2002 -2003
(Through April)**



Uniform Crime Reporting Procedures:

The Charlotte-Mecklenburg Police Department reports offense and arrest statistics in accordance with standard Uniform Crime Reporting (UCR) guidelines. UCR policy states that any adjustments to previous months can be made on the current month's report:

...In tabulating crime counts, an agency may find that offense totals for past months require adjustments due to developments in the investigation or other handling of the matter. It may be necessary to adjust totals reported to UCR for the past month or prior months. Needed adjustments can be made on the current month's report and do not affect the reliability of the figures in that such adjustments tend to equalize each other from month to month over a period of time.

- *Uniform Crime Reporting Handbook*, FBI, 1984, p. 42-43

We are required to report crime monthly to the UCR program, and we do therefore make an effort to process monthly changes in a timely manner. However, occasionally due to the review and processing required for reclassifying, unfounding or clearing cases, the current month's totals may reflect the processing of a backlog of these changes from previous months.

Users of the data are cautioned that conclusions about substantial changes in crime trends or in clearance rates based on only a single month's data or trend may reflect some of these adjustments. For this reason, in addition to the monthly and year-to-date trends on Page 1, the monthly report routinely includes a comparison for the previous 12 months (p. 4), as well as graphs that provide seasonal/monthly comparisons over a five-year period (p. 5-8).

We do make an effort to present the most accurate information available at the time this report is published. However, errors in compiling the data and charts do sometimes occur, so please notify the Research, Planning, and Analysis office if you have any questions about the data in this report.

The formats for this report were revised with the assistance of Officer David Padgett, who converted a number of spreadsheets, graphs, and charts from old software and continues to assist in UCR data preparation each month.

V. L. Sorban
Research, Planning & Analysis Bureau