

**CHARLOTTE-MECKLENBURG POLICE DEPARTMENT
MONTHLY SUMMARY REPORT
MAY, 2003**

**Darrel Stephens
Chief of Police**

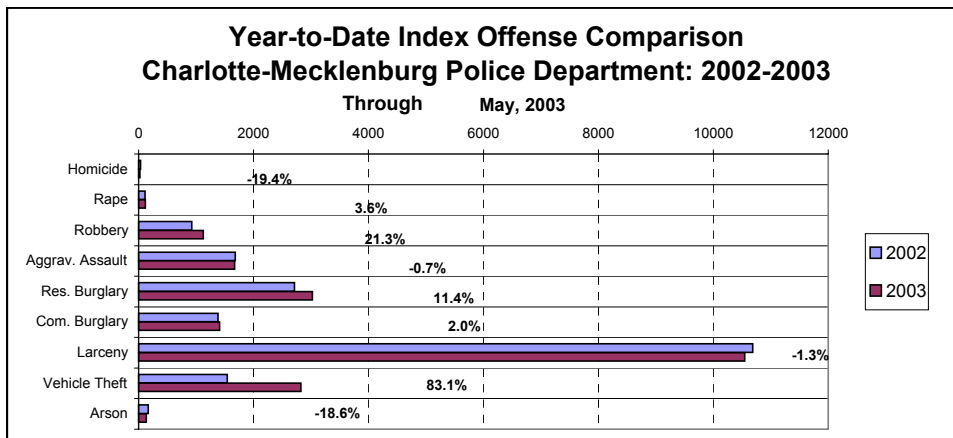
INDEX OFFENSES REPORTED TO CHARLOTTE-MECKLENBURG POLICE DEPARTMENT

May, 2003 INDEX OFFENSES	# THIS MONTH	% OF ALL INDEX	# LAST MONTH	MONTHLY % CHANGE	SAME MONTH LAST YEAR	MONTHLY % CHANGE	THIS YEAR TO DATE	LAST YEAR TO DATE	ANNUAL % CHANGE
HOMICIDE (MURDER & NON- NEGLIGENT MANSLAUGHTER)	6	0.1%	6	0.0%	11	-45.5%	25	31	-19.4%
RAPE TOTAL	25	0.5%	19	31.6%	28	-10.7%	116	112	3.6%
ACTUAL	25	0.5%	16	56.3%	25	0.0%	109	99	10.1%
ATTEMPT	0	0.0%	3	-100.0%	3	-100.0%	7	13	-46.2%
ROBBERY TOTAL	215	4.6%	185	16.2%	219	-1.8%	1124	927	21.3%
ARMED	169	3.6%	143	18.2%	170	-0.6%	873	715	22.1%
STRONG-ARM	46	1.0%	42	9.5%	49	-6.1%	251	212	18.4%
AGGRAVATED ASSAULT TOTAL	353	7.5%	322	9.6%	366	-3.6%	1669	1681	-0.7%
BURGLARY TOTAL	1033	21.9%	902	14.5%	927	11.4%	4429	4093	8.2%
RESIDENTIAL	701	14.9%	595	17.8%	663	5.7%	3021	2712	11.4%
COMMERCIAL	332	7.0%	307	8.1%	264	25.8%	1408	1381	2.0%

FORCE	805	17.1%	697	15.5%	715	12.6%	3532	3108	13.6%
NO FORCE	169	3.6%	145	16.6%	154	9.7%	617	708	-12.9%
ATTEMPT	59	1.3%	60	-1.7%	58	1.7%	280	277	1.1%
LARCENY TOTAL	2368	50.2%	2154	9.9%	2301	2.9%	10546	10687	-1.3%
\$200 AND OVER	1169	24.8%	1084	7.8%	1149	1.7%	5198	5149	1.0%
\$50 TO \$200	446	9.5%	389	14.7%	415	7.5%	1937	2013	-3.8%
UNDER \$50	753	16.0%	681	10.6%	737	2.2%	3411	3525	-3.2%

FROM AUTO	1171	24.8%	1190	-1.6%	1136	3.1%	5516	5289	4.3%
BICYCLE	22	0.5%	22	0.0%	15	46.7%	67	57	17.5%
SHOPLIFTING	242	5.1%	208	16.3%	292	-17.1%	1097	1399	-21.6%
OTHERS	933	19.8%	734	27.1%	858	8.7%	3866	3942	-1.9%
VEHICLE THEFT TOTAL	681	14.4%	568	19.9%	295	130.8%	2822	1541	83.1%
ARSON TOTAL	33	0.7%	21	57.1%	45	-26.7%	136	167	-18.6%
TOTALS	4714	100.0%	4177	12.9%	4192	12.5%	20867	19239	8.5%
VIOLENT PROPERTY	599	12.7%	532	12.6%	624	-4.0%	2934	2751	6.7%
PROPERTY	4115	87.3%	3645	12.9%	3568	15.3%	17933	16488	8.8%

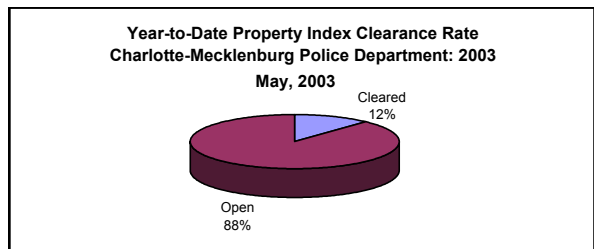
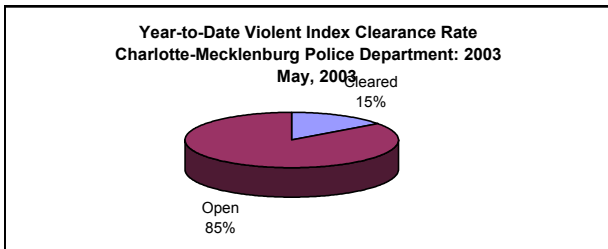
NOTE: These totals include offenses reported to the Charlotte-Mecklenburg Police Department in accordance with the Uniform Crime Reporting Program. Totals for homicide do not include cases investigated by the police but classed by UCR guidelines as negligent manslaughter or as "justifiable homicide."



INDEX CLEARANCES REPORTED BY THE CHARLOTTE-MECKLENBURG POLICE DEPARTMENT

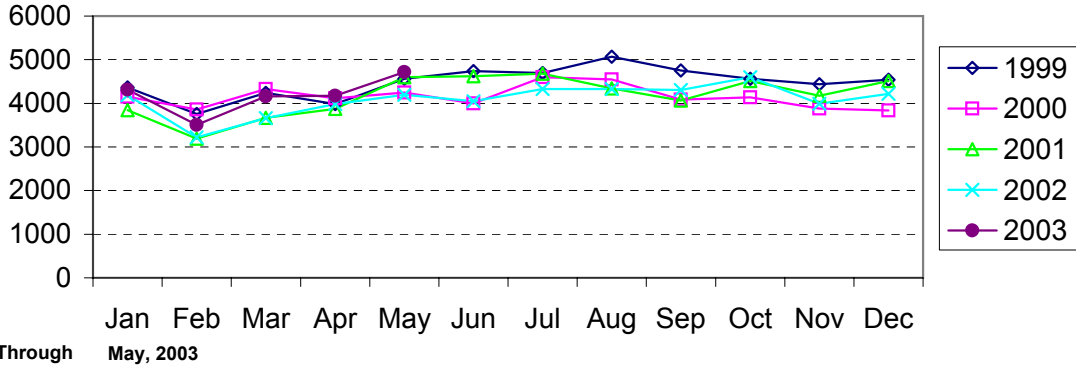
INDEX CLEARANCES	THIS MONTH:		LAST MONTH:		SAME MO. LAST YR:		THIS YEAR TO DATE:		LAST YEAR TO DATE:	
	NO.	%	NO.	%	NO.	%	NO.	%	NO.	%
MURDER & NON-NEGLIGENT MANSLAUGHTER	3	50.0%	3	50.0%	5	45.5%	14	56.0%	18	58.1%
RAPE TOTAL	1	4.0%	10	52.6%	29	103.6%	49	42.2%	56	50.0%
ACTUAL	1	4.0%	9	56.3%	26	104.0%	46	42.2%	52	52.5%
ATTEMPT	0	#DIV/0!	1	33.3%	3	100.0%	3	42.9%	4	30.8%
ROBBERY TOTAL	27	12.6%	51	27.6%	66	30.1%	198	17.6%	243	26.2%
ARMED	10	5.9%	39	27.3%	43	25.3%	128	14.7%	177	24.8%
STRONG-ARM	17	37.0%	12	28.6%	23	46.9%	70	27.9%	66	31.1%
AGGRAVATED ASSAULT TOTAL	104	29.5%	166	51.6%	288	78.7%	768	46.0%	862	51.3%
BURGLARY TOTAL	66	6.4%	104	11.5%	63	6.8%	405	9.1%	407	9.9%
RESIDENTIAL	48	6.8%	80	13.4%	49	7.4%	280	9.3%	313	11.5%
COMMERCIAL	18	5.4%	24	7.8%	14	5.3%	125	8.9%	94	6.8%
LARCENY TOTAL	208	8.8%	240	11.1%	244	10.6%	1201	11.4%	1171	11.0%
FROM AUTO	19	1.6%	29	2.4%	25	2.2%	148	2.7%	105	2.0%
BICYCLE	1	4.5%	3	13.6%	1	6.7%	8	11.9%	7	12.3%
SHOPLIFTING	132	54.5%	117	56.3%	135	46.2%	604	55.1%	724	51.8%
OTHERS	56	6.0%	91	12.4%	83	9.7%	441	11.4%	335	8.5%
VEHICLE THEFT TOTAL	111	16.3%	80	14.1%	64	21.7%	468	16.6%	335	21.7%
ARSON TOTAL	10	30.3%	4	19.0%	6	13.3%	45	33.1%	44	26.3%
TOTALS	530	11.2%	658	15.8%	765	18.2%	3148	15.1%	3136	16.3%
VIOLENT PROPERTY	135 395	22.5% 9.6%	230 428	43.2% 11.7%	388 377	62.2% 10.6%	1029 2119	35.1% 11.8%	1179 1957	42.9% 11.9%

NOTE: Clearances are reported in accordance with Uniform Crime Report guidelines. Since clearances are not counted until they are entered into the Records system, any delays in processing may result in some clearances being reported in succeeding months.

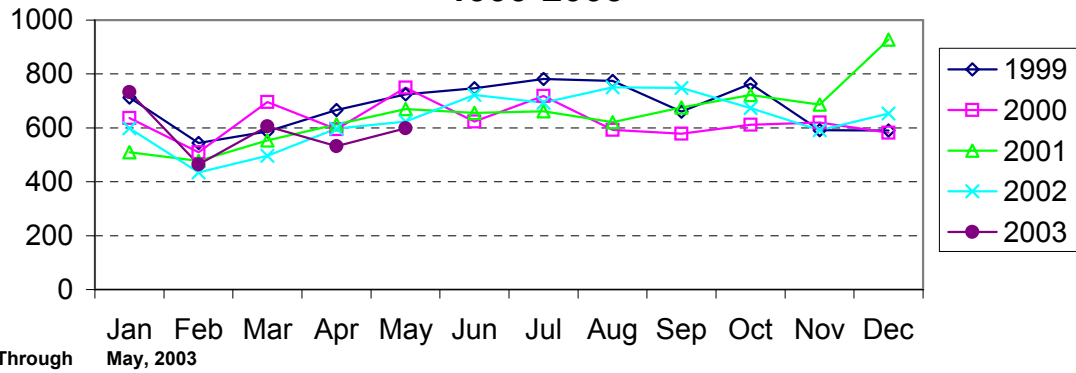


Clearance rates for crime reporting are calculated by dividing the number of crimes cleared during a designated time span by the number of crimes reported in the same period and converting the result to a percentage (multiplying by 100). Since cases from previous reporting periods can be cleared during the designated time span, the rate may be higher than 100%.

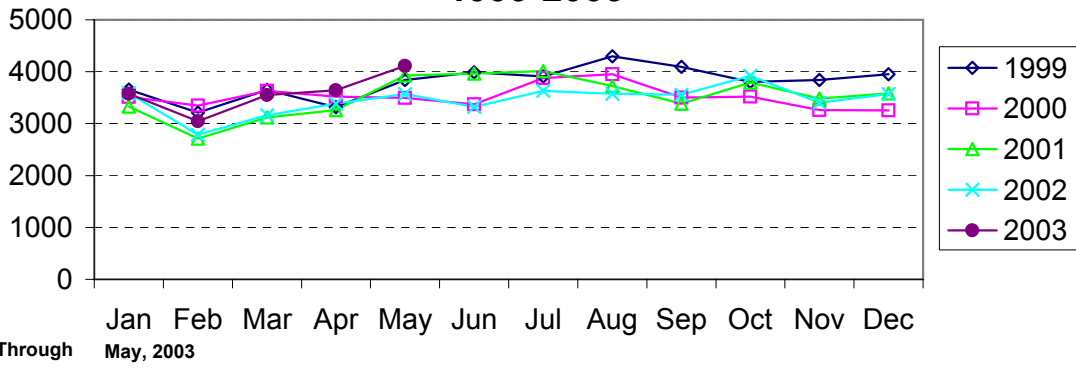
Index Offenses Reported by Month Charlotte-Mecklenburg Police Department: 1999-2003



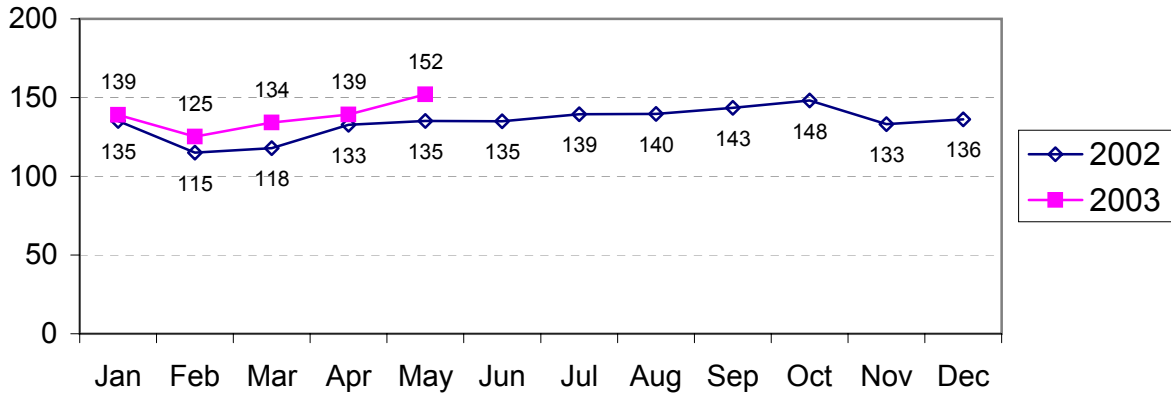
Violent Index Offenses Reported by Month Charlotte-Mecklenburg Police Department: 1999-2003



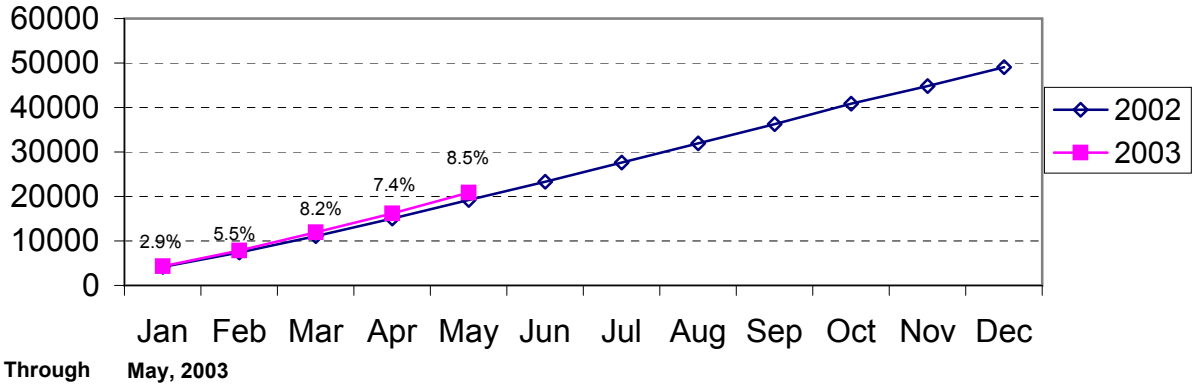
Property Index Offenses Reported by Month Charlotte-Mecklenburg Police Department: 1999-2003



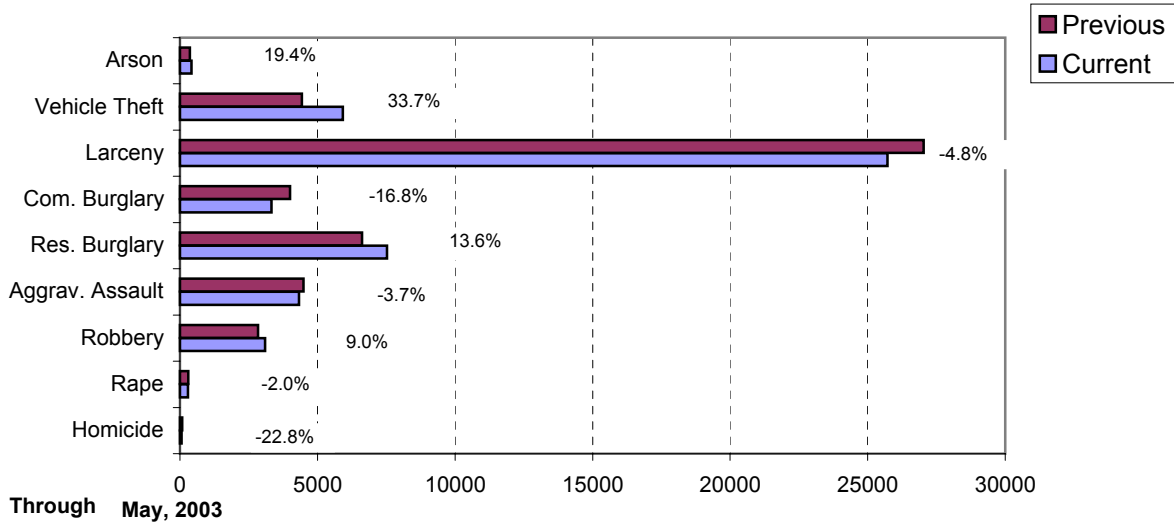
Index Offense Per Day Average by Month Charlotte-Mecklenburg Police Department: 2002-2003



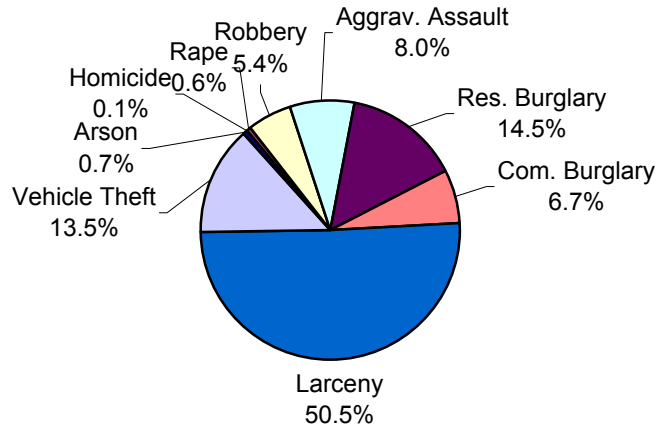
Index Offenses Year-to-Date Cumulative Totals Charlotte-Mecklenburg Police Department: 2002-2003



Index Offenses in Current and Previous 12 Months Charlotte-Mecklenburg Police Department: 2002-2003

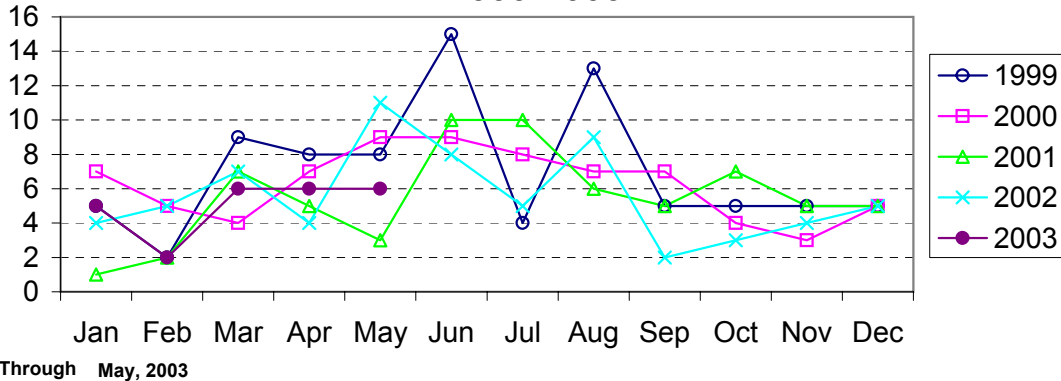


Year-to-Date Index Offenses by Type Charlotte-Mecklenburg Police Department: 2003

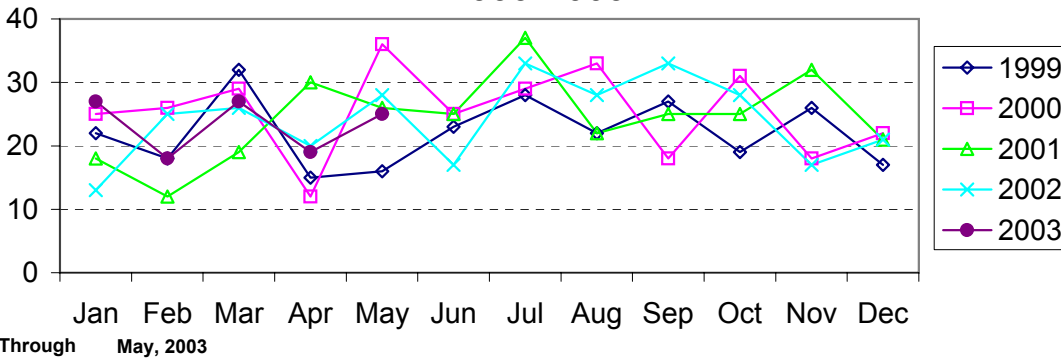


Through May, 2003

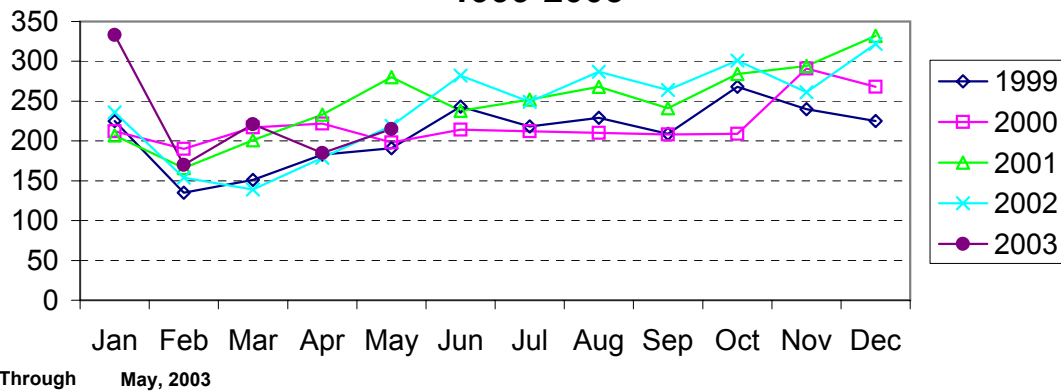
Homicide Reported by Month Charlotte-Mecklenburg Police Department: 1999-2003



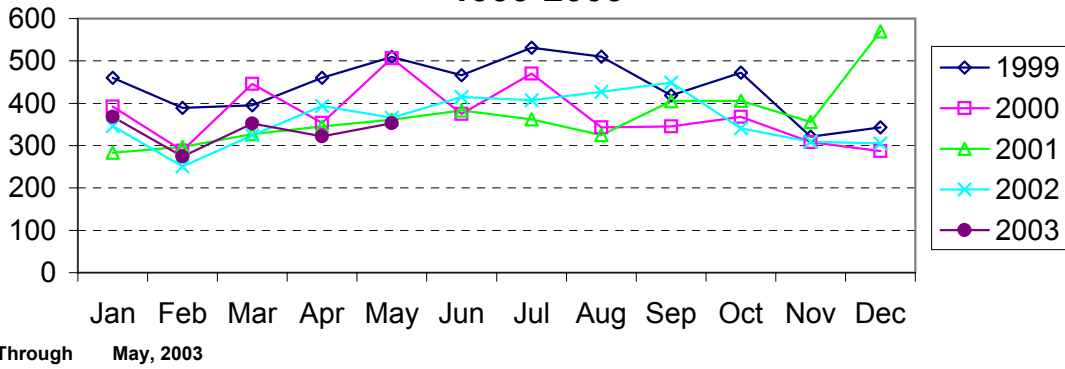
Rape Reported by Month Charlotte-Mecklenburg Police Department: 1999-2003



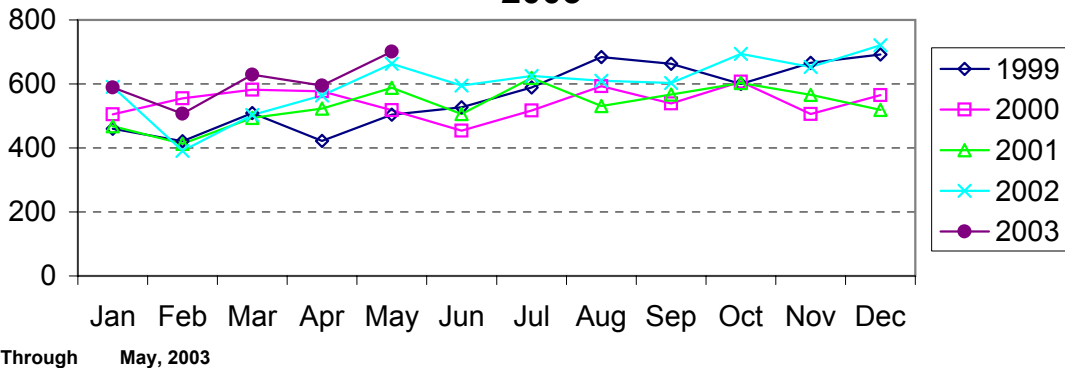
Robbery Reported by Month Charlotte-Mecklenburg Police Department: 1999-2003



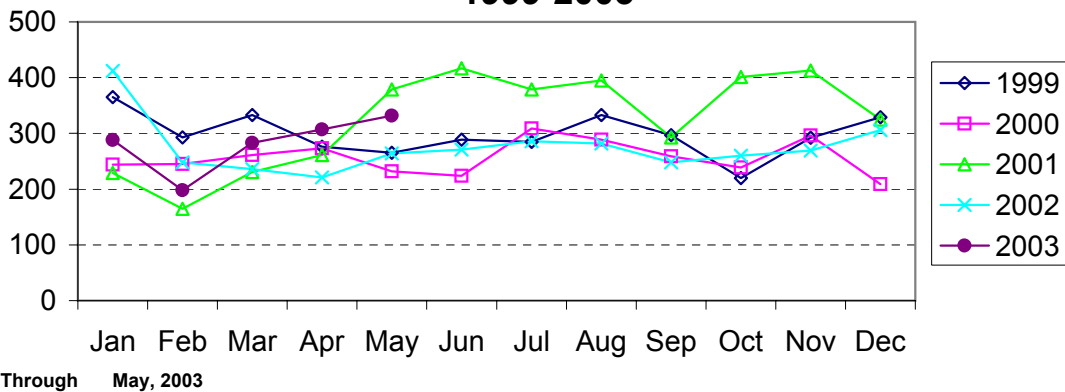
Aggravated Assault Reported by Month Charlotte-Mecklenburg Police Department: 1999-2003



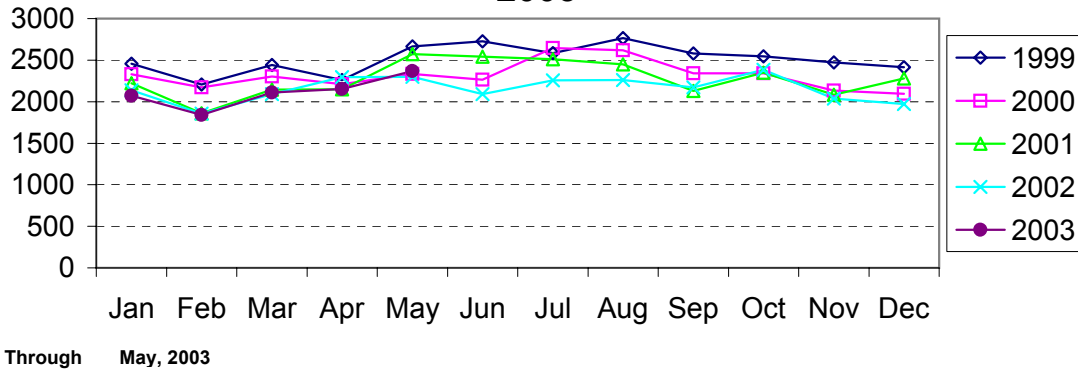
Residential Burglary Reported by Month Charlotte-Mecklenburg Police Department: 1999- 2003



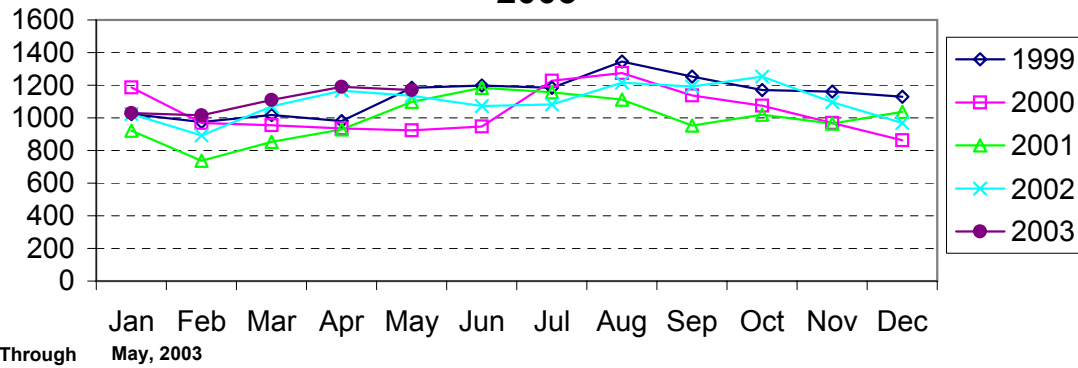
Commercial Burglary Reported by Month Charlotte-Mecklenburg Police Department: 1999-2003



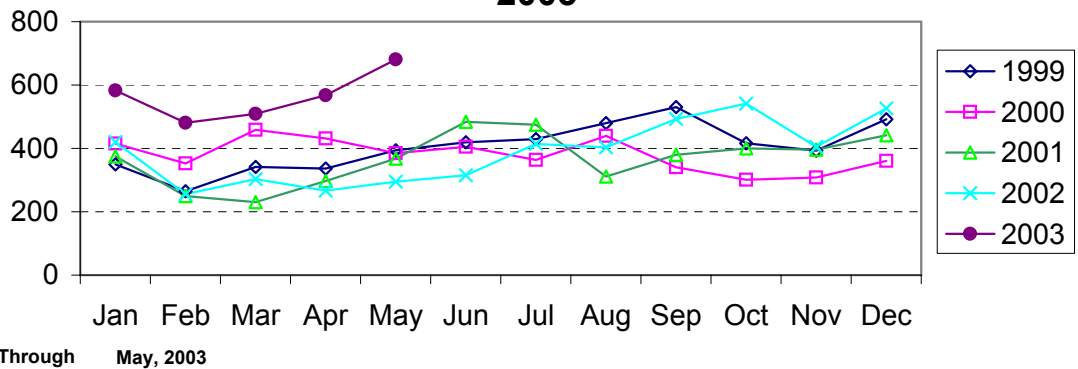
Larceny Reported by Month Charlotte-Mecklenburg Police Department: 1999-2003



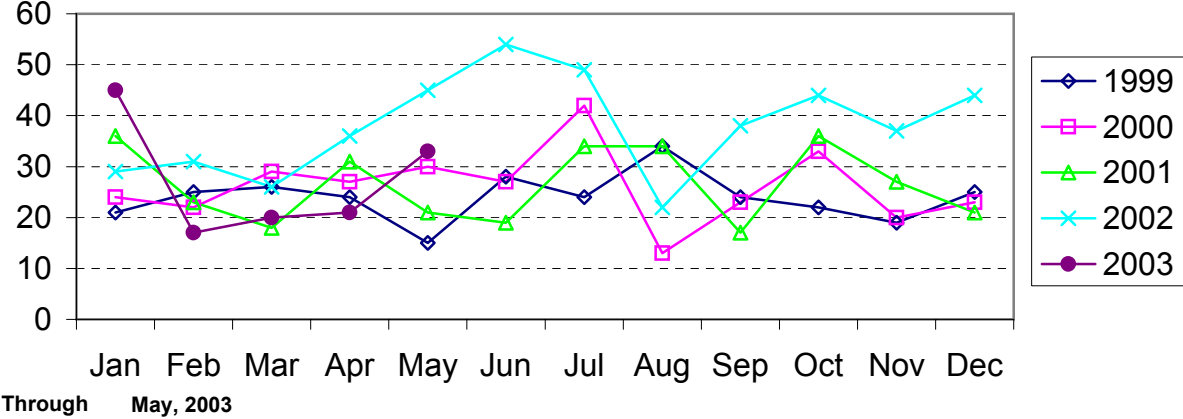
Larceny from Vehicle Reported by Month Charlotte-Mecklenburg Police Department: 1999-2003



Vehicle Theft Reported by Month Charlotte-Mecklenburg Police Department: 1999-2003



Arson Reported by Month Charlotte-Mecklenburg Police Department: 1999-2003



Index Offenses Reported by District and Service Area of Occurrence									
West Service Area: Jan-May 2002-2003									
INDEX_CATEGORIES	Adam 2			Adam3			West Service Area		
	2002	2003	% Change	2002	2003	% Change	2002	2003	% Change
MURDER & NON-NEGLIGENT MANSLAUGHTER	4	2	-50.0%	2	2	0.0%	6	4	-33.3%
RAPE	11	8	-27.3%	12	21	75.0%	23	29	26.1%
ACTUAL	10	8	-20.0%	10	19	90.0%	20	27	35.0%
ATTEMPTED	1	0	-100.0%	2	2	0.0%	3	2	-33.3%
ROBBERY	76	98	28.9%	85	103	21.2%	161	201	24.8%
ARMED	59	73	23.7%	72	76	5.6%	131	149	13.7%
STRONG-ARM	17	25	47.1%	13	27	107.7%	30	52	73.3%
AGGRAVATED ASSAULT	157	166	5.7%	157	209	33.1%	314	375	19.4%
BURGLARY	362	349	-3.6%	446	550	23.3%	808	899	11.3%
RESIDENTIAL	213	227	6.6%	257	341	32.7%	470	568	20.9%
COMMERCIAL	149	122	-18.1%	189	209	10.6%	338	331	-2.1%
LARCENY	603	601	-0.3%	827	864	4.5%	1430	1465	2.4%
FROM AUTO	300	296	-1.3%	389	404	3.9%	689	700	1.6%
BICYCLE	4	4	0.0%	3	3	0.0%	7	7	0.0%
SHOPLIFTING	76	66	-13.2%	96	77	-19.8%	172	143	-16.9%
OTHERS	223	235	5.4%	339	380	12.1%	562	615	9.4%
VEHICLE THEFT	106	180	69.8%	218	320	46.8%	324	500	54.3%
ARSON	6	8	33.3%	19	21	10.5%	25	29	16.0%
TOTALS	1325	1412	6.6%	1766	2090	18.3%	3091	3502	13.3%
VIOLENT	248	274	10.5%	256	335	30.9%	504	609	20.8%
PROPERTY	1077	1138	5.7%	1510	1755	16.2%	2587	2893	11.8%

Index Offenses Reported by District and Service Area of Occurrence									
Southeast Service Area: Jan-May 2002-2003									
INDEX_CATEGORIES	Baker 1			Baker 3			Southeast Service Area		
	2002	2003	% Change	2002	2003	% Change	2002	2003	% Change
MURDER & NON-NEGLIGENT MANSLAUGHTER	1	0	-100.0%	2	2	0.0%	3	2	-33.3%
RAPE	10	7	-30.0%	8	10	25.0%	18	17	-5.6%
ACTUAL	9	7	-22.2%	6	10	66.7%	15	17	13.3%
ATTEMPTED	1	0	-100.0%	2	0	-100.0%	3	0	-100.0%
ROBBERY	49	50	2.0%	99	100	1.0%	148	150	1.4%
ARMED	35	41	17.1%	83	85	2.4%	118	126	6.8%
STRONG-ARM	14	9	-35.7%	16	16	0.0%	30	25	-16.7%
AGGRAVATED ASSAULT	79	74	-6.3%	129	123	-4.7%	208	197	-5.3%
BURGLARY	286	353	23.4%	453	423	-6.6%	739	776	5.0%
RESIDENTIAL	182	201	10.4%	345	327	-5.2%	527	528	0.2%
COMMERCIAL	104	152	46.2%	108	96	-11.1%	212	248	17.0%
LARCENY	746	695	-6.8%	1129	1167	3.4%	1875	1862	-0.7%
FROM AUTO	308	345	12.0%	626	664	6.1%	934	1009	8.0%
BICYCLE	5	3	-40.0%	13	19	46.2%	18	22	22.2%
SHOPLIFTING	124	79	-36.3%	132	110	-16.7%	256	189	-26.2%
OTHERS	309	268	-13.3%	358	374	4.5%	667	642	-3.7%
VEHICLE THEFT	83	125	50.6%	151	314	107.9%	234	439	87.6%
ARSON	7	5	-28.6%	30	19	-36.7%	37	24	-35.1%
TOTALS	1261	1309	3.8%	2001	2158	7.8%	3262	3467	6.3%
VIOLENT	139	131	-5.8%	238	235	-1.3%	377	366	-2.9%
PROPERTY	1122	1178	5.0%	1763	1923	9.1%	2885	3101	7.5%

The data in the district breakdowns does not include a small number of offenses in which the location of the offense was unknown or was entered without a valid tract assignment. Districts are not equal in geographic size, demographics, zoning/development, and other factors that influence the rate of crimes committed in an area. Therefore, the comparison of raw offense totals across districts is not advisable.

Index Offenses Reported by District and Service Area of Occurrence									
Northeast Service Area: Jan-May 2002-2003									
INDEX_CATEGORIES	Charlie 1			Charlie 3			Northeast Service Area		
	2002	2003	% Change	2002	2003	% Change	2002	2003	% Change
MURDER & NON-NEGLIGENT MANSLAUGHTER	2	4	100.0%	2	4	100.0%	4	8	100.0%
RAPE	7	15	114.3%	14	9	-35.7%	21	24	14.3%
ACTUAL	5	14	180.0%	13	8	-38.5%	18	22	22.2%
ATTEMPTED	2	1	-50.0%	1	1	0.0%	3	2	-33.3%
ROBBERY	87	70	-19.5%	99	100	1.0%	186	170	-8.6%
ARMED	65	56	-13.8%	82	82	0.0%	147	138	-6.1%
STRONG-ARM	21	14	-33.3%	17	18	5.9%	38	32	-15.8%
AGGRAVATED ASSAULT	149	144	-3.4%	145	152	4.8%	294	296	0.7%
BURGLARY	373	486	30.3%	506	456	-9.9%	879	942	7.2%
RESIDENTIAL	242	324	33.9%	387	350	-9.6%	629	674	7.2%
COMMERCIAL	131	162	23.7%	119	106	-10.9%	250	268	7.2%
LARCENY	1655	1461	-11.7%	859	939	9.3%	2514	2400	-4.5%
FROM AUTO	913	852	-6.7%	419	480	14.6%	1332	1332	0.0%
BICYCLE	4	6	50.0%	4	6	50.0%	8	12	50.0%
SHOPLIFTING	209	144	-31.1%	96	101	5.2%	305	245	-19.7%
OTHERS	529	459	-13.2%	340	352	3.5%	869	811	-6.7%
VEHICLE THEFT	130	311	139.2%	144	332	130.6%	274	643	134.7%
ARSON	13	16	23.1%	28	16	-42.9%	41	32	-22.0%
TOTALS	2416	2507	3.8%	1797	2008	11.7%	4213	4515	7.2%
VIOLENT PROPERTY	245 2171	233 2274	-4.9% 4.7%	260 1537	265 1743	1.9% 13.4%	505 3708	498 4017	-1.4% 8.3%

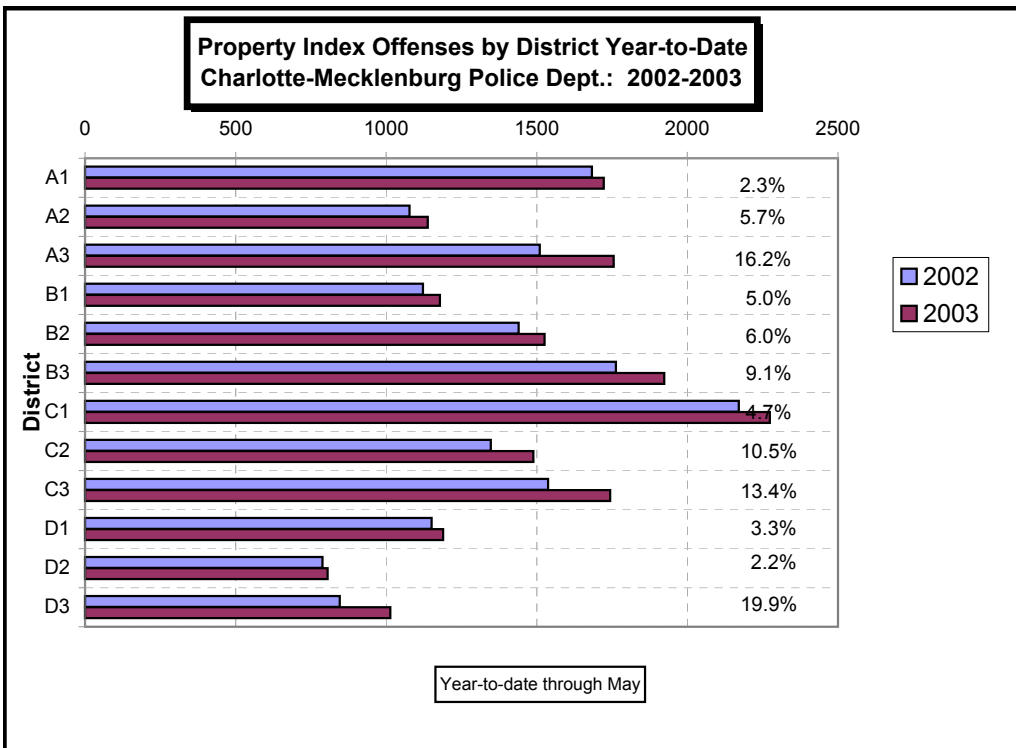
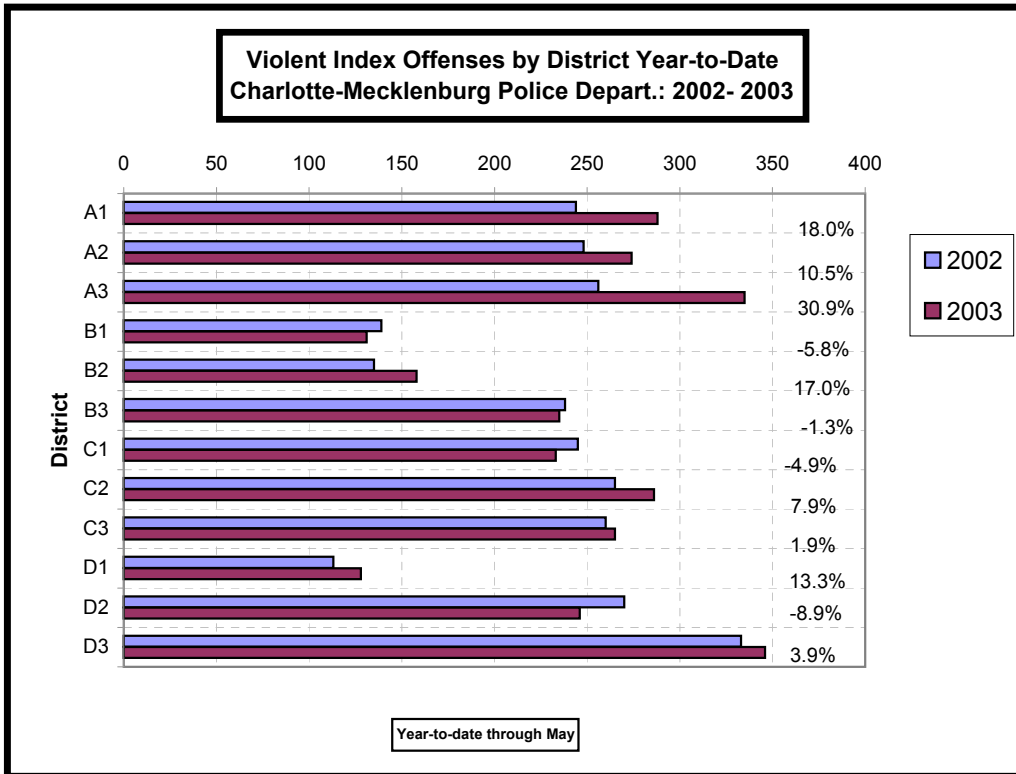
Index Offenses Reported by District and Service Area of Occurrence									
Central Service Area: Jan-May 2002-2003									
INDEX_CATEGORIES	David 1			David 2			Central Service Area		
	2002	2003	% Change	2002	2003	% Change	2002	2003	% Change
MURDER & NON-NEGLIGENT MANSLAUGHTER	1	2	100.0%	7	1	-85.7%	8	3	-62.5%
RAPE	5	5	0.0%	8	8	0.0%	13	13	0.0%
ACTUAL	5	5	0.0%	7	7	0.0%	12	12	0.0%
ATTEMPTED	0	0	NA	1	1	0.0%	1	1	0.0%
ROBBERY	47	45	-4.3%	68	81	19.1%	115	126	9.6%
ARMED	20	23	15.0%	51	59	15.7%	71	82	15.5%
STRONG-ARM	27	22	-18.5%	17	22	29.4%	44	44	0.0%
AGGRAVATED ASSAULT	60	76	26.7%	187	156	-16.6%	247	232	-6.1%
BURGLARY	139	162	16.5%	241	241	0.0%	380	403	6.1%
RESIDENTIAL	55	81	47.3%	156	181	16.0%	211	262	24.2%
COMMERCIAL	84	81	-3.6%	85	60	-29.4%	169	141	-16.6%
LARCENY	942	806	-14.4%	424	392	-7.5%	1366	1198	-12.3%
FROM AUTO	481	449	-6.7%	204	205	0.5%	685	654	-4.5%
BICYCLE	9	0	-100.0%	1	4	300.0%	10	4	-60.0%
SHOPLIFTING	40	23	-42.5%	23	12	-47.8%	63	35	-44.4%
OTHERS	412	334	-18.9%	196	171	-12.8%	608	505	-16.9%
VEHICLE THEFT	69	215	211.6%	114	164	43.9%	183	379	107.1%
ARSON	1	6	500.0%	9	8	-11.1%	10	14	40.0%
TOTALS	1264	1317	4.2%	1058	1051	-0.7%	2322	2368	2.0%
VIOLENT PROPERTY	113 1151	128 1189	13.3% 3.3%	270 788	246 805	-8.9% 2.2%	383 1939	374 1994	-2.3% 2.8%

The data in the district breakdowns does not include a small number of offenses in which the location of the offense was unknown or was entered without a valid tract assignment. Districts are not equal in geographic size, demographics, zoning/development, and other factors that influence the rate of crimes committed in an area. Therefore, the comparison of raw offense totals across districts is not advisable.

Index Offenses Reported by District and Service Area of Occurrence									
East Service Area: Jan-May 2002-2003									
INDEX_CATEGORIES	Charlie 2			David 3			East Service Area		
	2002	2003	% Change	2002	2003	% Change	2002	2003	% Change
MURDER & NON-NEGLIGENT MANSLAUGHTER	0	1	NA	6	4	-33.3%	6	5	-16.7%
RAPE	9	3	-66.7%	9	9	0.0%	18	12	-33.3%
ACTUAL	8	3	-62.5%	9	9	0.0%	17	12	-29.4%
ATTEMPTED	1	0	-100.0%	0	0	NA	1	0	-100.0%
ROBBERY	105	150	42.9%	103	136	32.0%	208	286	37.5%
ARMED	81	121	49.4%	86	113	31.4%	167	234	40.1%
STRONG-ARM	24	29	20.8%	17	23	35.3%	41	52	26.8%
AGGRAVATED ASSAULT	151	132	-12.6%	215	197	-8.4%	366	329	-10.1%
BURGLARY	361	373	3.3%	196	289	47.4%	557	662	18.9%
RESIDENTIAL	286	265	-7.3%	109	199	82.6%	395	464	17.5%
COMMERCIAL	75	108	44.0%	87	90	3.4%	162	198	22.2%
LARCENY	863	907	5.1%	508	483	-4.9%	1371	1390	1.4%
FROM AUTO	308	428	39.0%	236	259	9.7%	544	687	26.3%
BICYCLE	0	8	NA	3	3	0.0%	3	11	266.7%
SHOPLIFTING	273	198	-27.5%	61	30	-50.8%	334	228	-31.7%
OTHERS	282	273	-3.2%	208	191	-8.2%	490	464	-5.3%
VEHICLE THEFT	113	202	78.8%	135	237	75.6%	248	439	77.0%
ARSON	10	6	-40.0%	7	5	-28.6%	17	11	-35.3%
TOTALS	1612	1774	10.0%	1179	1360	15.4%	2791	3134	12.3%
VIOLENT	265	286	7.9%	333	346	3.9%	598	632	5.7%
PROPERTY	1347	1488	10.5%	846	1014	19.9%	2193	2502	14.1%

Index Offenses Reported by District and Service Area of Occurrence									
South Service Area: Jan-May 2002-2003									
INDEX_CATEGORIES	Adam 1			Baker 2			South Service Area		
	2002	2003	% Change	2002	2003	% Change	2002	2003	% Change
MURDER & NON-NEGLIGENT MANSLAUGHTER	3	3	0.0%	1	0	-100.0%	4	3	-25.0%
RAPE	11	11	0.0%	7	10	42.9%	18	21	16.7%
ACTUAL	9	10	11.1%	7	9	28.6%	16	19	18.8%
ATTEMPTED	2	1	-50.0%	0	1	NA	2	2	0.0%
ROBBERY	65	131	101.5%	44	57	29.5%	109	188	72.5%
ARMED	46	91	97.8%	35	42	20.0%	81	133	64.2%
STRONG-ARM	19	30	57.9%	9	15	66.7%	28	45	60.7%
AGGRAVATED ASSAULT	165	143	-13.3%	83	91	9.6%	248	234	-5.6%
BURGLARY	357	348	-2.5%	355	358	0.8%	712	706	-0.8%
RESIDENTIAL	208	222	6.7%	256	277	8.2%	464	499	7.5%
COMMERCIAL	149	126	-15.4%	99	81	-18.2%	248	207	-16.5%
LARCENY	1150	1118	-2.8%	953	1009	5.9%	2103	2127	1.1%
FROM AUTO	567	525	-7.4%	529	560	5.9%	1096	1085	-1.0%
BICYCLE	4	8	100.0%	7	3	-57.1%	11	11	0.0%
SHOPLIFTING	192	170	-11.5%	74	77	4.1%	266	247	-7.1%
OTHERS	387	415	7.2%	343	369	7.6%	730	784	7.4%
VEHICLE THEFT	166	246	48.2%	109	147	34.9%	275	393	42.9%
ARSON	10	10	0.0%	23	12	-47.8%	33	22	-33.3%
TOTALS	1927	2010	4.3%	1575	1684	6.9%	3502	3694	5.5%
VIOLENT	244	288	18.0%	135	158	17.0%	379	446	17.7%
PROPERTY	1683	1722	2.3%	1440	1526	6.0%	3123	3248	4.0%

The data in the district breakdowns does not include a small number of offenses in which the location of the offense was unknown or was entered without a valid tract assignment. Districts are not equal in geographic size, demographics, zoning/development, and other factors that influence the rate of crimes committed in an area. Therefore, the comparison of raw offense totals across districts is not advisable.



The data in the district breakdowns does not include a small number of offenses in which the location of the offense was unknown or was entered without a valid tract assignment. Districts are not equal in geographic size, demographics, zoning/development, and other factors that influence the rate of crimes committed in an area. Therefore, the comparison of raw offense totals across districts is not advisable.

Arrests by Charlotte-Mecklenburg Police Department
Year-To-Date: 2002-2003
(Through May)

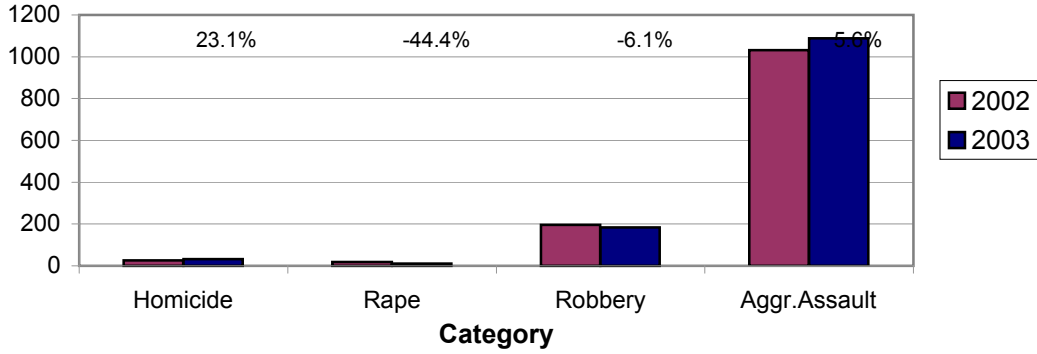
CATEGORY	ADULTS (AGE 18 & OLDER):			JUVENILES (UNDER 18):			TOTAL ARRESTS:		
	2002 Y-T-D	2003 Y-T-D	% CHANGE	2002 Y-T-D	2003 Y-T-D	% CHANGE	2002 Y-T-D	2003 Y-T-D	% CHANGE
Murder/Non-Negligent Manslaughter	26	29	11.5%	0	3	NA	26	32	23.1%
Negligent & Vehicular Manslaughter	3	0	-100.0%	0	0	NA	3	0	-100.0%
Rape	17	10	-41.2%	1	0	-100.0%	18	10	-44.4%
Robbery	136	136	0.0%	60	48	-20.0%	196	184	-6.1%
Aggravated Assault	905	932	3.0%	126	157	24.6%	1031	1089	5.6%
Burglary	207	200	-3.4%	93	117	25.8%	300	317	5.7%
Larceny	688	587	-14.7%	265	303	14.3%	953	890	-6.6%
Vehicle Theft	51	57	11.8%	53	178	235.8%	104	235	126.0%
Non-Aggravated Assault	702	704	0.3%	342	414	21.1%	1044	1118	7.1%
Arson	5	13	160.0%	18	13	-27.8%	23	26	13.0%
Forgery/Counterfiet	63	47	-25.4%	0	2	NA	63	49	-22.2%
Fraud	311	219	-29.6%	2	6	200.0%	313	225	-28.1%
Embezzlement	55	48	-12.7%	4	3	-25.0%	59	51	-13.6%
Stolen Property	187	229	22.5%	43	81	88.4%	230	310	34.8%
Vandalism	105	108	2.9%	74	79	6.8%	179	187	4.5%
Weapons	192	208	8.3%	15	28	86.7%	207	236	14.0%
Prostitution	110	85	-22.7%	0	0	NA	110	85	-22.7%
Sex Offenses	133	77	-42.1%	13	22	69.2%	146	99	-32.2%
Drugs	1328	1415	6.6%	151	138	-8.6%	1479	1553	5.0%
Gambling	1	14	1300.0%	0	0	NA	1	14	1300.0%
Offenses vs. Family	24	6	-75.0%	0	0	NA	24	6	-75.0%
DUI	1090	838	-23.1%	6	1	-83.3%	1096	839	-23.4%
Liquor	126	66	-47.6%	4	5	25.0%	130	71	-45.4%
Disorder Conduct	197	200	1.5%	70	136	94.3%	267	336	25.8%
Other Non-Traffic	2839	2981	5.0%	305	346	13.4%	3144	3327	5.8%
VIOLENT INDEX¹	1084	1107	2.1%	187	208	11.2%	1271	1315	3.5%
PROPERTY INDEX²	951	857	-9.9%	429	611	42.4%	1380	1468	6.4%
INDEX SUBTOTAL	2035	1964	-3.5%	616	819	33.0%	2651	2783	5.0%
PART 2 SUBTOTAL³	7466	7245	-3.0%	1029	1261	22.5%	8495	8506	0.1%
TOTAL	9501	9209	-3.1%	1645	2080	26.4%	11146	11289	1.3%

¹Violent Index includes murder and non-negligent manslaughter, rape, robbery, and aggravated assault.

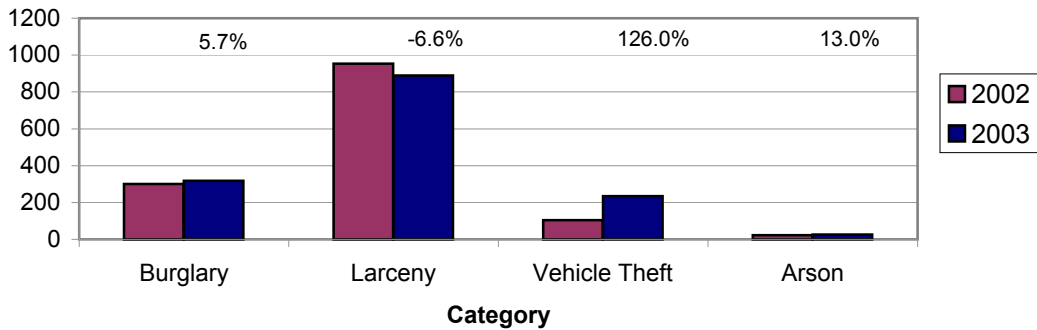
²Property Index includes burglary, larceny, vehicle theft, and arson.

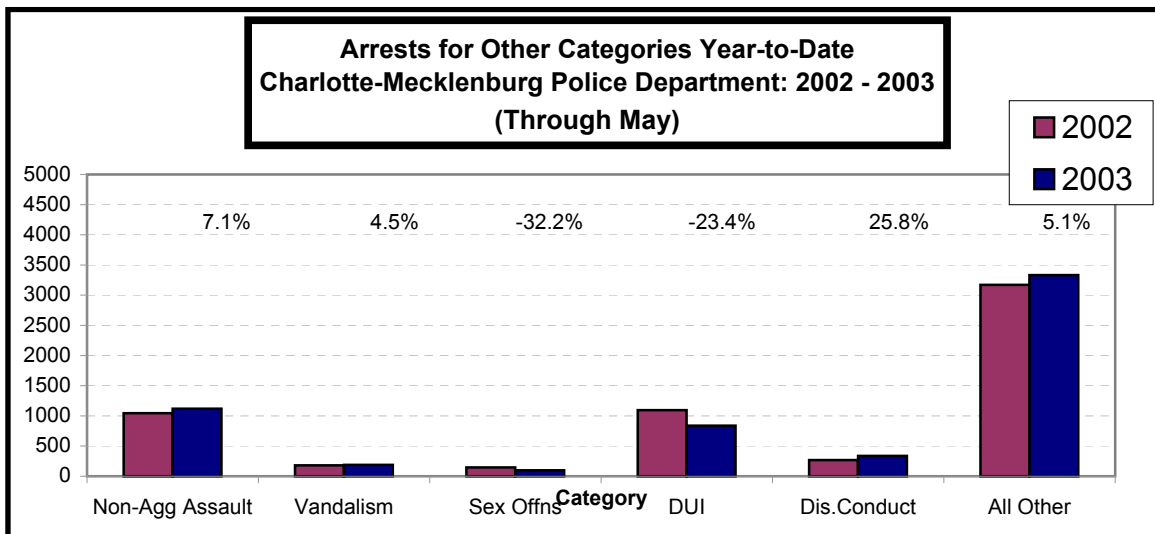
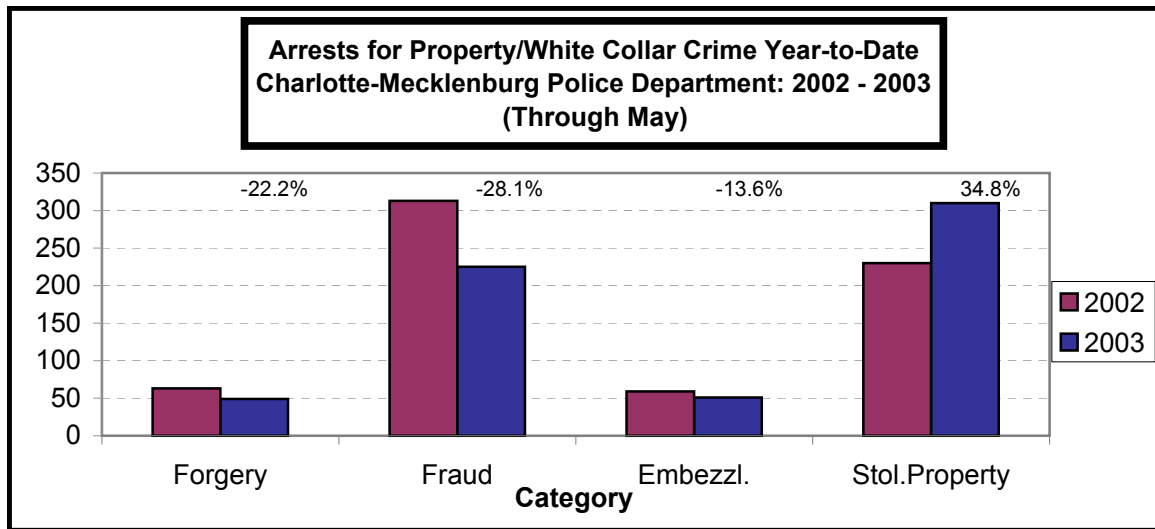
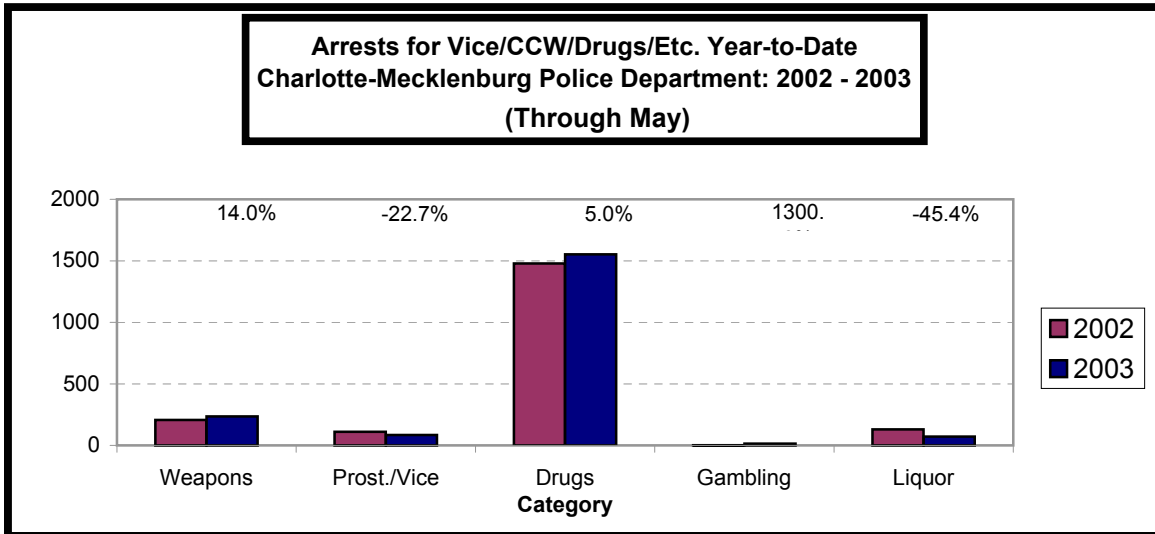
³Part 2 crimes include non-traffic crimes not counted in the Index totals.

**Violent Index Arrests Year-to-Date
Charlotte-Mecklenburg Police Department: 2002-2003
(Through May)**

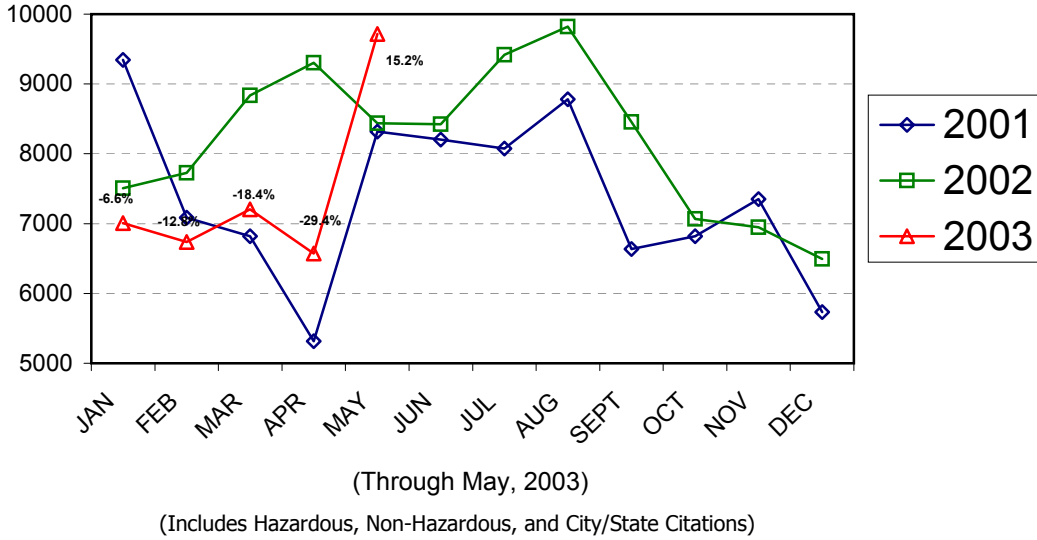


**Property Index Arrests Year-to-Date
Charlotte-Mecklenburg Police Department: 2002-2003
(Through May)**

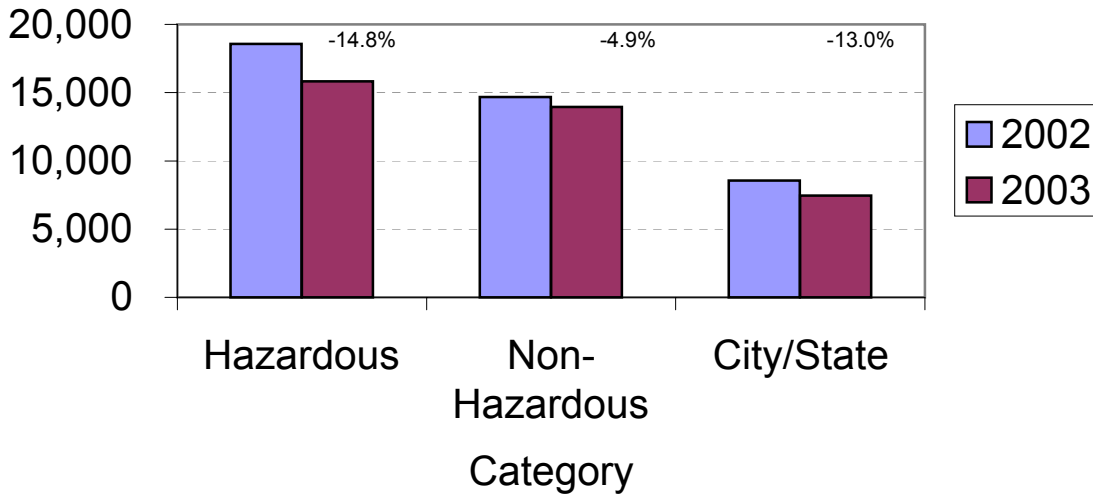




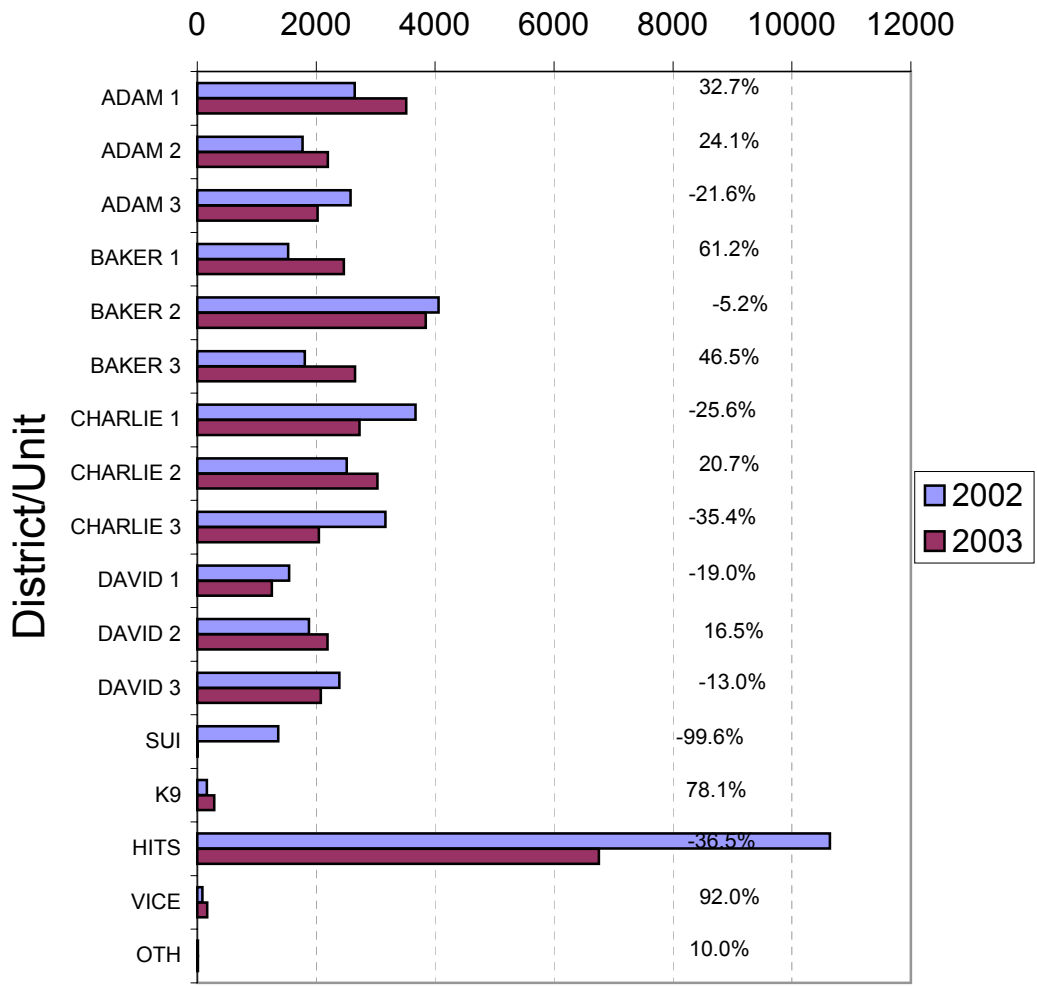
**Total Citation Enforcement by Month
Charlotte-Mecklenburg Police Dept: 2001-2003**



**CMPD Citation Enforcement by Category
Year-to-Date, 2002 - 2003
(Through May, 2003)**



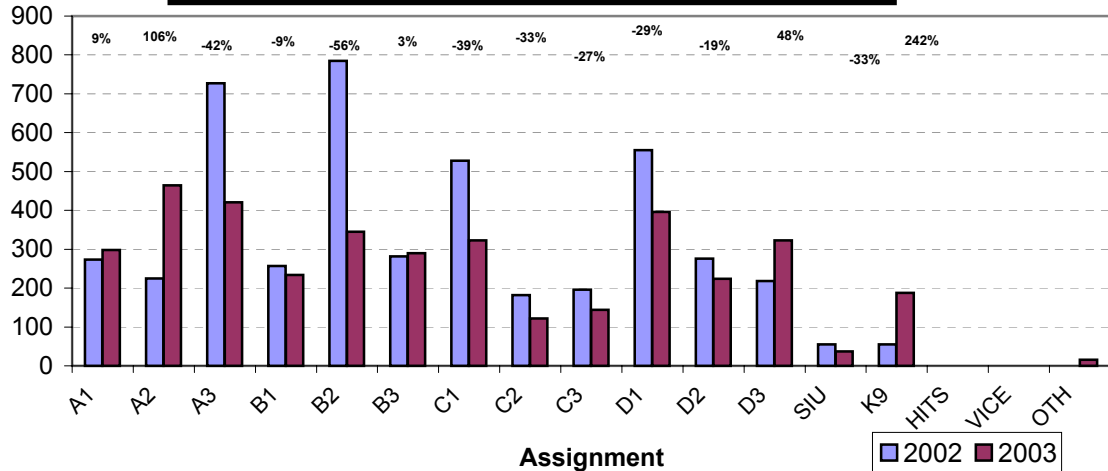
**Citations Issued Year-to-Date by CMPD Districts/Units
2002 - 2003
(Through May, 2003)**



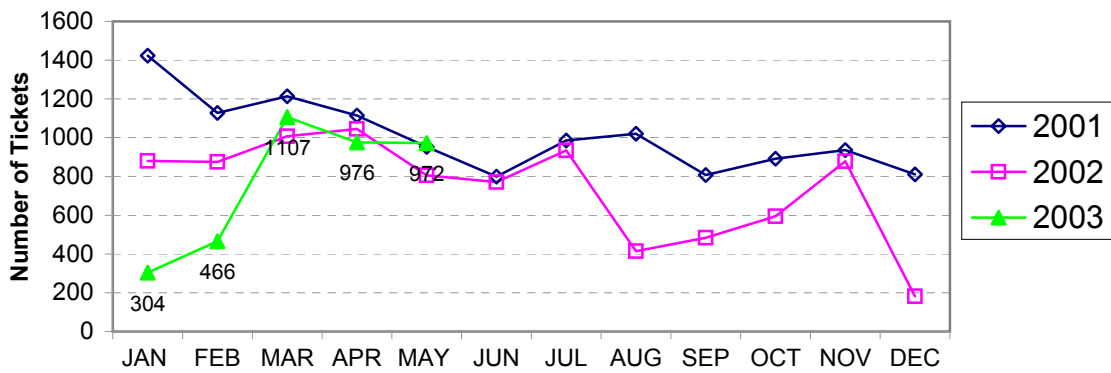
**Citations Issued by the Charlotte Mecklenburg Police Depart Year-to-Date
(Through May, 2003)**

Total Citations	2002	2003	% Change
Hazardous	18,567	15,827	-14.8%
Non-Hazardous	14,680	13,958	-4.9%
Other City/State Statute/Ordinance	8,563	7,451	-13.0%
Total	41,810	37,236	-10.9%

**Warning Tickets Issued by CMPD District/Unit
Year-to-Date, 2002 - 2003
Through May, 2003**



**Total Warning Tickets Issued by CMPD
By Month: 2001 - 2003**



**Warning Tickets Issued by CMPD Year-to-Date
Through May, 2003**

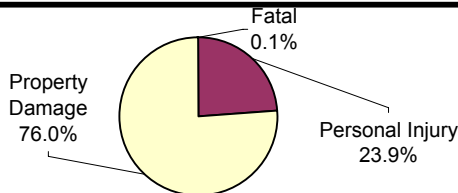
	2002	2003	% Change
Total Warning Tickets	4614	3825	-17.1%

**Traffic Collision Reports
Charlotte-Mecklenburg Police Department
Year-to-Date: 2002-2003
(Through May)**

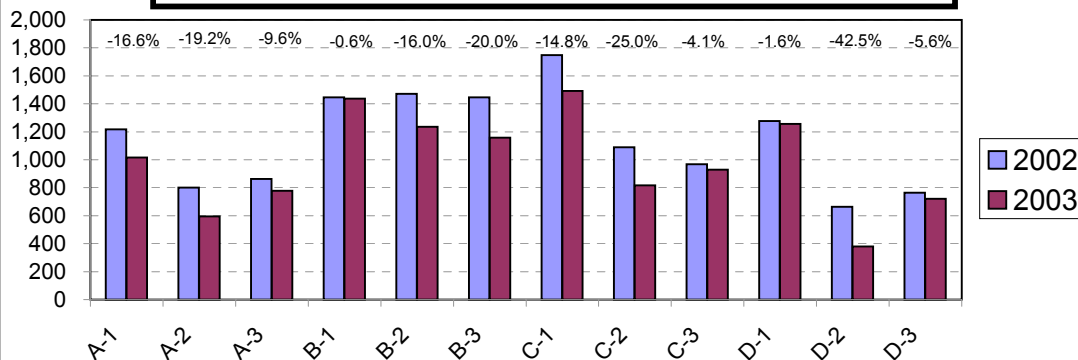
<u>Type</u>	<u>2002</u>	<u>2003</u>	<u>% Change</u>
Fatal Collisions	25	25	0.0%
Vehicle Occupants Killed	18	27	50.0%
Pedestrians Killed	7	2	-71.4%
Personal Injury Collisions	3302	2831	-14.2%
Property Damage Collisions	10431	9063	-13.1%
Total Collisions	13758	11919	-13.4%

* The number of fatal collisions and the number of persons killed in those incidents is taken from the HITS file. Their records are updated for deaths that occur after the initial report is filed.

**Traffic Collisions Reported by Type
Charlotte-Mecklenburg Police Department:
2003 Year-to-Date
(Through May)**



**Traffic Collisions Reported by Charlotte-Mecklenburg Police Dept.
Year-to-Date By Location (District) of Accident : 2002 -2003
(Through May)**



Uniform Crime Reporting Procedures:

The Charlotte-Mecklenburg Police Department reports offense and arrest statistics in accordance with standard Uniform Crime Reporting (UCR) guidelines. UCR policy states that any adjustments to previous months can be made on the current month's report:

...In tabulating crime counts, an agency may find that offense totals for past months require adjustments due to developments in the investigation or other handling of the matter. It may be necessary to adjust totals reported to UCR for the past month or prior months. Needed adjustments can be made on the current month's report and do not affect the reliability of the figures in that such adjustments tend to equalize each other from month to month over a period of time.

- *Uniform Crime Reporting Handbook*, FBI, 1984, p. 42-43

We are required to report crime monthly to the UCR program, and we do therefore make an effort to process monthly changes in a timely manner. However, occasionally due to the review and processing required for reclassifying, unbounding or clearing cases, the current month's totals may reflect the processing of a backlog of these changes from previous months.

Users of the data are cautioned that conclusions about substantial changes in crime trends or in clearance rates based on only a single month's data or trend may reflect some of these adjustments. For this reason, in addition to the monthly and year-to-date trends on Page 1, the monthly report routinely includes a comparison for the previous 12 months (p. 4), as well as graphs that provide seasonal/monthly comparisons over a five-year period (p. 5-8).

We do make an effort to present the most accurate information available at the time this report is published. However, errors in compiling the data and charts do sometimes occur, so please notify the Research, Planning, and Analysis office if you have any questions about the data in this report.

The formats for this report were revised with the assistance of Officer David Padgett, who converted a number of spreadsheets, graphs, and charts from old software and continues to assist in UCR data preparation each month.

V. L. Sorban
Research, Planning & Analysis Bureau