

**CHARLOTTE-MECKLENBURG POLICE DEPARTMENT
MONTHLY SUMMARY REPORT
JULY, 2003**

**Darrel Stephens
Chief of Police**

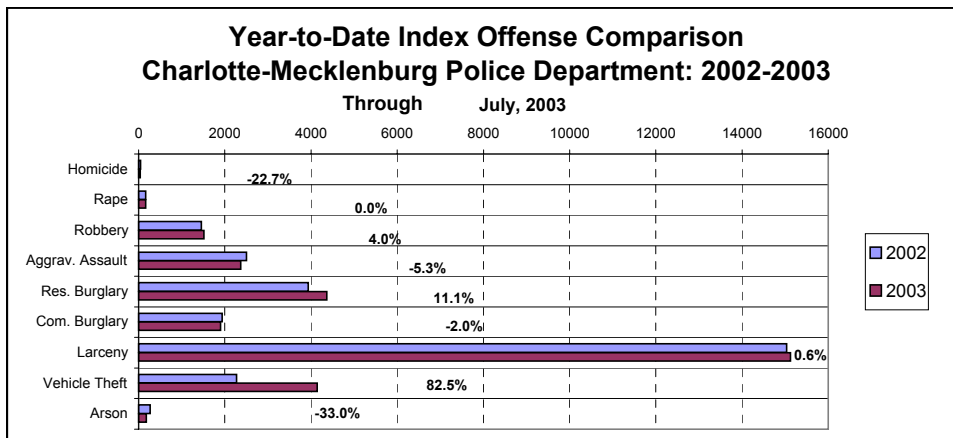
INDEX OFFENSES REPORTED TO CHARLOTTE-MECKLENBURG POLICE DEPARTMENT

July, 2003 INDEX OFFENSES	# THIS MONTH	% OF ALL INDEX	# LAST MONTH	MONTHLY % CHANGE	SAME MONTH LAST YEAR	MONTHLY % CHANGE	THIS YEAR TO DATE	LAST YEAR TO DATE	ANNUAL % CHANGE
HOMICIDE (MURDER & NON- NEGLIGENT MANSLAUGHTER)	6	0.1%	3	100.0%	5	20.0%	34	44	-22.7%
RAPE TOTAL	22	0.5%	24	-8.3%	33	-33.3%	162	162	0.0%
ACTUAL	15	0.3%	19	-21.1%	27	-44.4%	143	141	1.4%
ATTEMPT	7	0.1%	5	40.0%	6	16.7%	19	21	-9.5%
ROBBERY TOTAL	212	4.5%	180	17.8%	249	-14.9%	1516	1458	4.0%
ARMED	165	3.5%	142	16.2%	193	-14.5%	1180	1135	4.0%
STRONG-ARM	47	1.0%	38	23.7%	56	-16.1%	336	323	4.0%
AGGRAVATED ASSAULT TOTAL	368	7.8%	333	10.5%	407	-9.6%	2370	2503	-5.3%
BURGLARY TOTAL	982	20.8%	858	14.5%	911	7.8%	6269	5870	6.8%
RESIDENTIAL	688	14.6%	660	4.2%	625	10.1%	4369	3932	11.1%
COMMERCIAL	294	6.2%	198	48.5%	286	2.8%	1900	1938	-2.0%

FORCE	774	16.4%	650	19.1%	705	9.8%	4956	4492	10.3%
NO FORCE	142	3.0%	159	-10.7%	151	-6.0%	918	979	-6.2%
ATTEMPT	66	1.4%	49	34.7%	55	20.0%	395	399	-1.0%
LARCENY TOTAL	2376	50.4%	2202	7.9%	2256	5.3%	15124	15033	0.6%
\$200 AND OVER	1225	26.0%	1064	15.1%	1094	12.0%	7487	7198	4.0%
\$50 TO \$200	405	8.6%	399	1.5%	456	-11.2%	2741	2907	-5.7%
UNDER \$50	746	15.8%	739	0.9%	706	5.7%	4896	4928	-0.6%

FROM AUTO	1301	27.6%	1157	12.4%	1083	20.1%	7974	7444	7.1%
BICYCLE	28	0.6%	16	75.0%	35	-20.0%	111	111	0.0%
SHOPLIFTING	219	4.6%	197	11.2%	270	-18.9%	1513	1934	-21.8%
OTHERS	828	17.6%	832	-0.5%	868	-4.6%	5526	5544	-0.3%
VEHICLE THEFT TOTAL	724	15.4%	596	21.5%	414	74.9%	4142	2270	82.5%
ARSON TOTAL	21	0.4%	24	-12.5%	49	-57.1%	181	270	-33.0%
TOTALS	4711	100.0%	4220	11.6%	4324	9.0%	29798	27610	7.9%
VIOLENT PROPERTY	608	12.9%	540	12.6%	694	-12.4%	4082	4167	-2.0%
PROPERTY	4103	87.1%	3680	11.5%	3630	13.0%	25716	23443	9.7%

NOTE: These totals include offenses reported to the Charlotte-Mecklenburg Police Department in accordance with the Uniform Crime Reporting Program. Totals for homicide do not include cases investigated by the police but classed by UCR guidelines as negligent manslaughter or as "justifiable homicide."

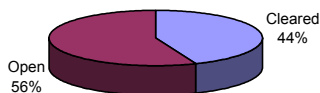


INDEX CLEARANCES REPORTED BY THE CHARLOTTE-MECKLENBURG POLICE DEPARTMENT

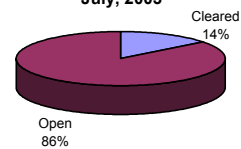
July, 2003 INDEX CLEARANCES	THIS MONTH:		LAST MONTH:		SAME MO. LAST YR:		THIS YEAR TO DATE:		LAST YEAR TO DATE:	
	NO.	%	NO.	%	NO.	%	NO.	%	NO.	%
MURDER & NON-NEGLIGENT MANSLAUGHTER	2	33.3%	3	100.0%	2	40.0%	19	55.9%	22	50.0%
RAPE TOTAL	50	227.3%	18	75.0%	10	30.3%	117	72.2%	71	43.8%
ACTUAL	43	286.7%	14	73.7%	8	29.6%	103	72.0%	64	45.4%
ATTEMPT	7	100.0%	4	80.0%	2	33.3%	14	73.7%	7	33.3%
ROBBERY TOTAL	74	34.9%	35	19.4%	23	9.2%	307	20.3%	312	21.4%
ARMED	46	27.9%	22	15.5%	13	6.7%	196	16.6%	224	19.7%
STRONG-ARM	28	59.6%	13	34.2%	10	17.9%	111	33.0%	88	27.2%
AGGRAVATED ASSAULT TOTAL	416	113.0%	168	50.5%	148	36.4%	1352	57.0%	1186	47.4%
BURGLARY TOTAL	317	32.3%	68	7.9%	51	5.6%	790	12.6%	521	8.9%
RESIDENTIAL	172	25.0%	59	8.9%	36	5.8%	511	11.7%	403	10.2%
COMMERCIAL	145	49.3%	9	4.5%	15	5.2%	279	14.7%	118	6.1%
LARCENY TOTAL	631	26.6%	274	12.4%	185	8.2%	2106	13.9%	1690	11.2%
FROM AUTO	107	8.2%	37	3.2%	28	2.6%	292	3.7%	180	2.4%
BICYCLE	4	14.3%	1	6.3%	2	5.7%	13	11.7%	11	9.9%
SHOPLIFTING	153	69.9%	121	61.4%	125	46.3%	878	58.0%	1007	52.1%
OTHERS	367	44.3%	115	13.8%	30	3.5%	923	16.7%	492	8.9%
VEHICLE THEFT TOTAL	198	27.3%	110	18.5%	68	16.4%	776	18.7%	451	19.9%
ARSON TOTAL	5	23.8%	3	12.5%	8	16.3%	53	29.3%	66	24.4%
TOTALS	1693	35.9%	679	16.1%	495	11.4%	5520	18.5%	4319	15.6%
VIOLENT PROPERTY	542	89.1%	224	41.5%	183	26.4%	1795	44.0%	1591	38.2%
	1151	28.1%	455	12.4%	312	8.6%	3725	14.5%	2728	11.6%

NOTE: Clearances are reported in accordance with Uniform Crime Report guidelines. Since clearances are not counted until they are entered into the Records system, any delays in processing may result in some clearances being reported in succeeding months.

**Year-to-Date Violent Index Clearance Rate
Charlotte-Mecklenburg Police Department: 2003
July, 2003**

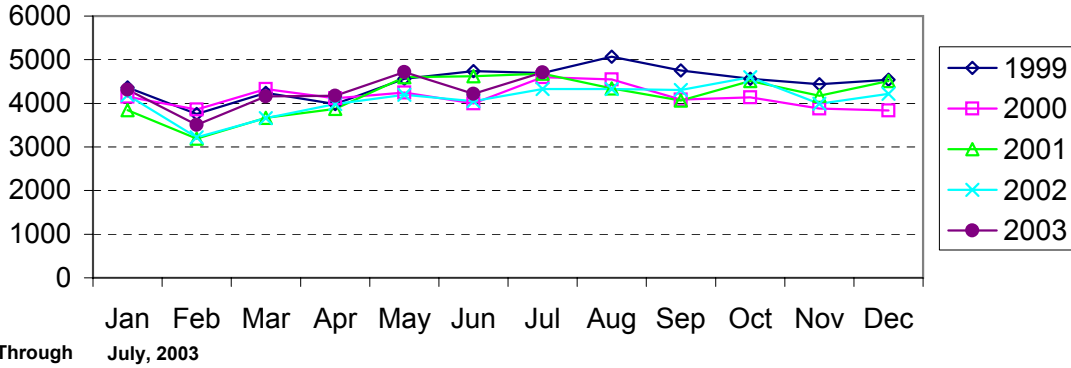


**Year-to-Date Property Index Clearance Rate
Charlotte-Mecklenburg Police Department: 2003
July, 2003**

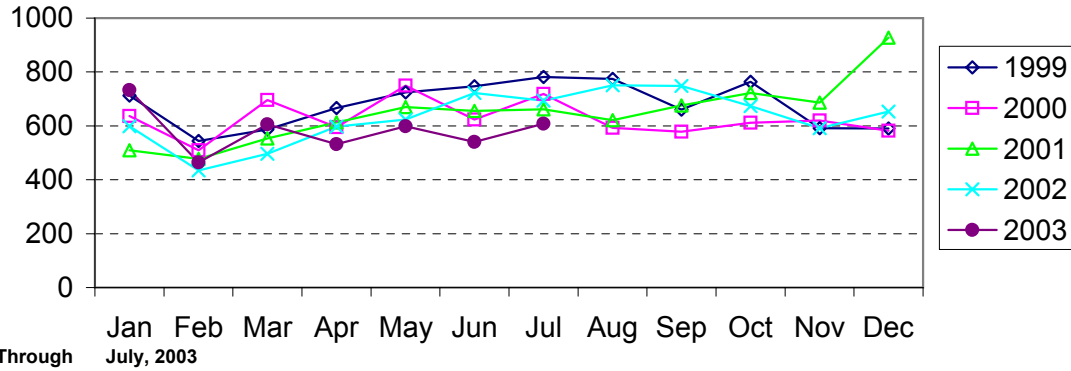


Clearance rates for crime reporting are calculated by dividing the number of crimes cleared during a designated time span by the number of crimes reported in the same period and converting the result to a percentage (multiplying by 100). Since cases from previous reporting periods can be cleared during the designated time span, the rate may be higher than 100%.

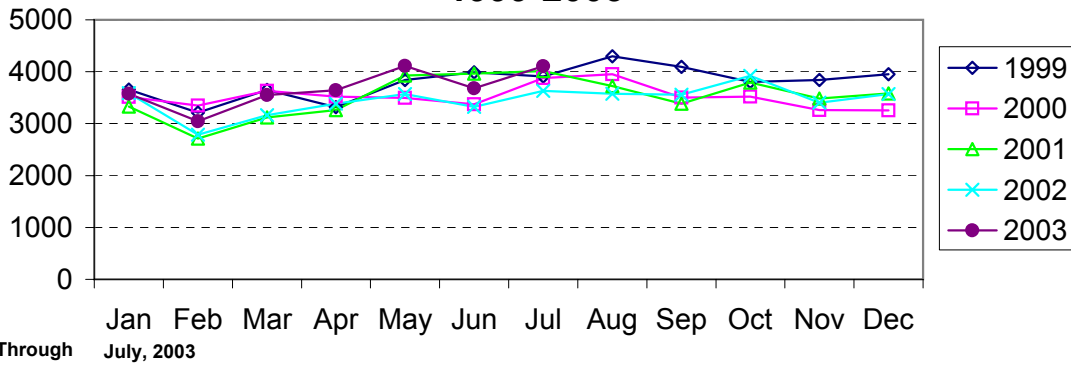
Index Offenses Reported by Month Charlotte-Mecklenburg Police Department: 1999-2003



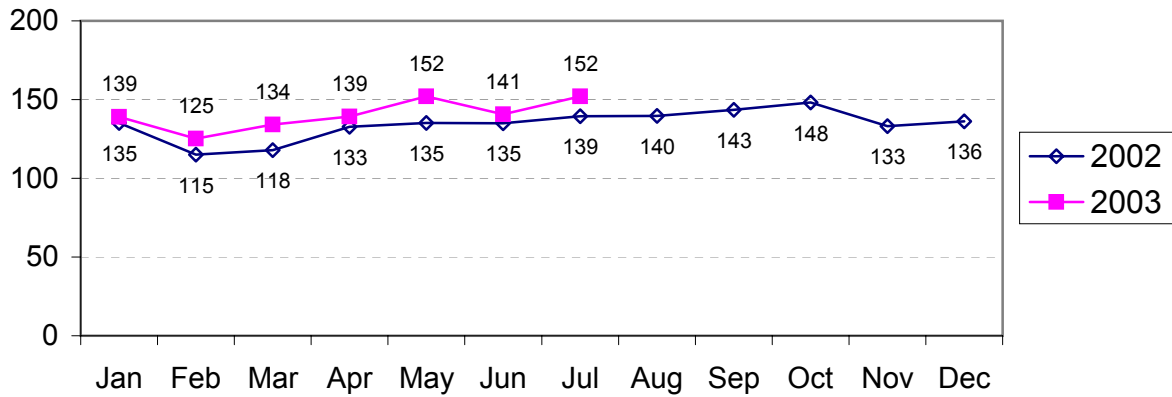
Violent Index Offenses Reported by Month Charlotte-Mecklenburg Police Department: 1999-2003



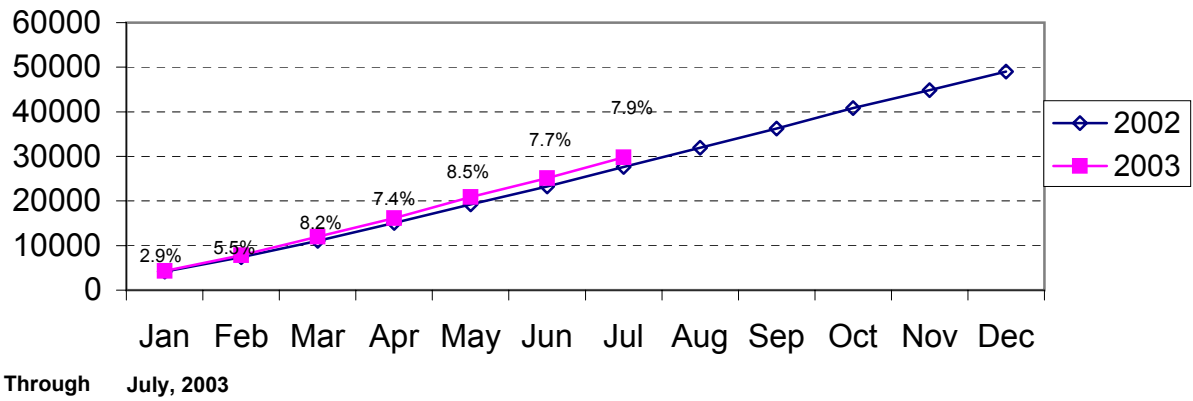
Property Index Offenses Reported by Month Charlotte-Mecklenburg Police Department: 1999-2003



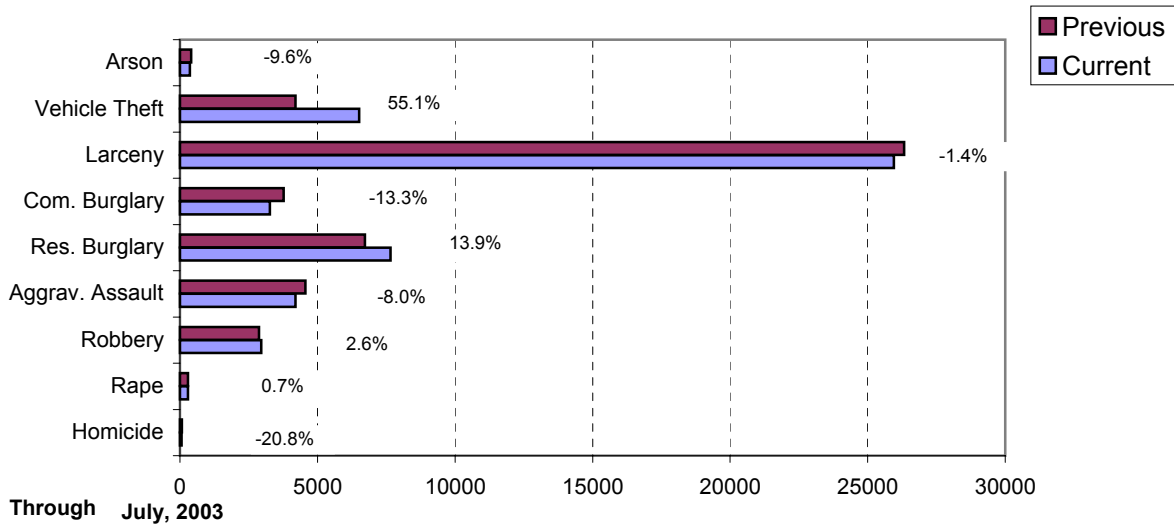
Index Offense Per Day Average by Month Charlotte-Mecklenburg Police Department: 2002-2003



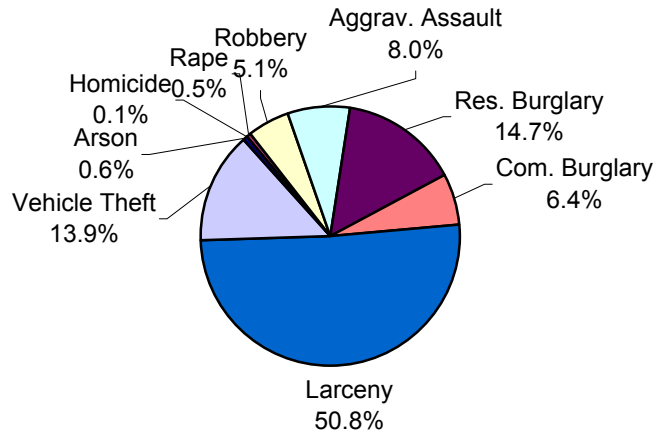
Index Offenses Year-to-Date Cumulative Totals Charlotte-Mecklenburg Police Department: 2002-2003



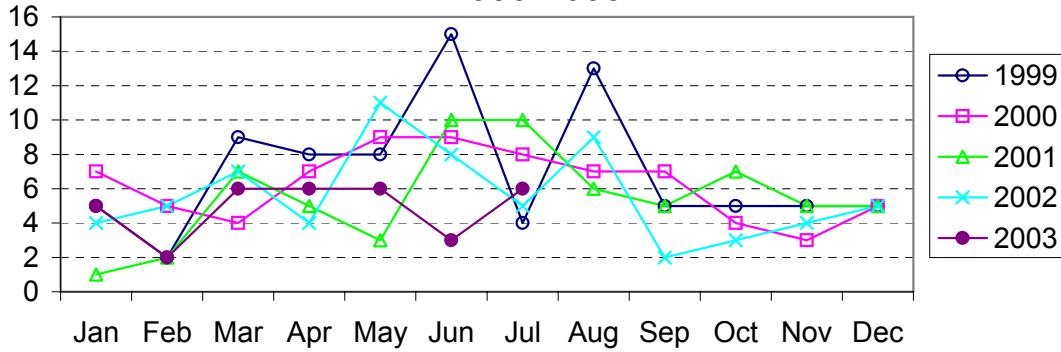
**Index Offenses in Current and Previous 12 Months
Charlotte-Mecklenburg Police Department:
2002-2003**



**Year-to-Date Index Offenses by Type
Charlotte-Mecklenburg Police Department: 2003**

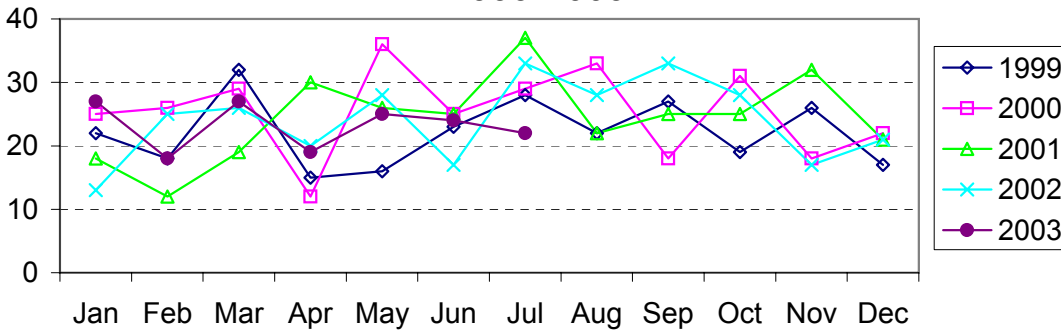


Homicide Reported by Month Charlotte-Mecklenburg Police Department: 1999-2003



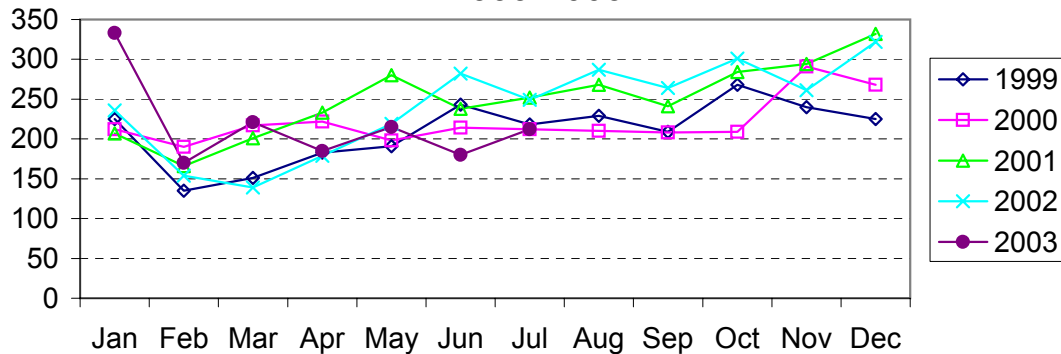
Through July, 2003

Rape Reported by Month Charlotte-Mecklenburg Police Department: 1999-2003



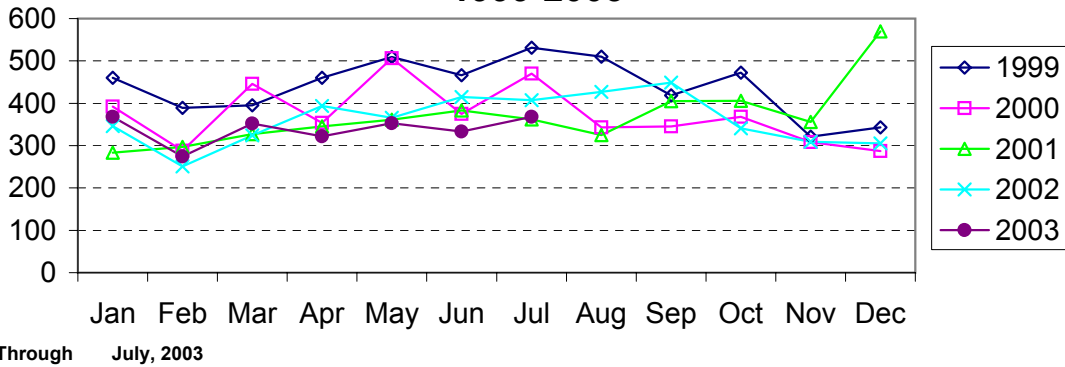
Through July, 2003

Robbery Reported by Month Charlotte-Mecklenburg Police Department: 1999-2003

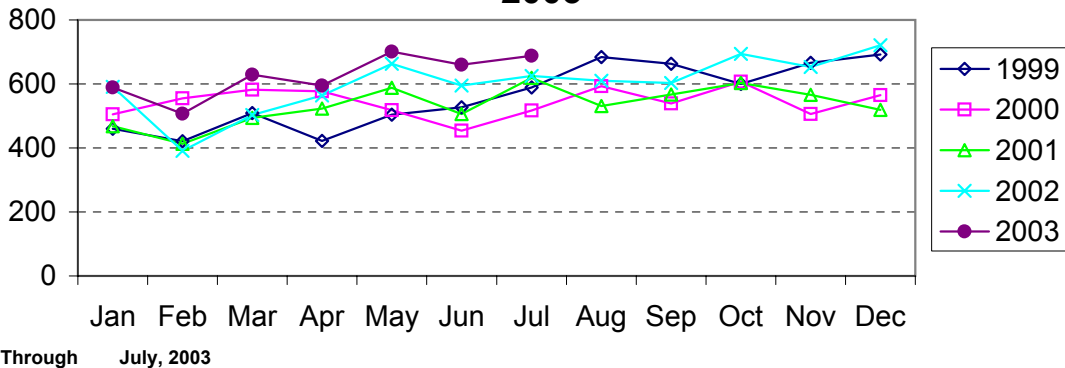


Through July, 2003

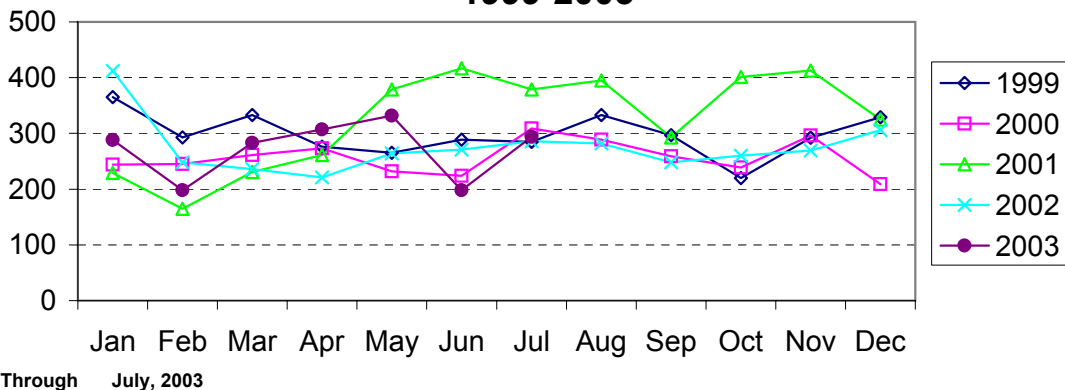
**Aggravated Assault Reported by Month
Charlotte-Mecklenburg Police Department:
1999-2003**



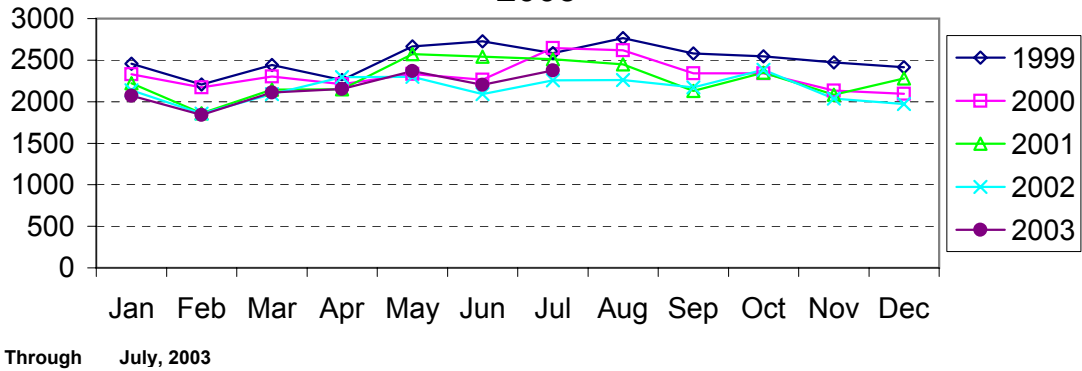
**Residential Burglary Reported by Month
Charlotte-Mecklenburg Police Department: 1999-
2003**



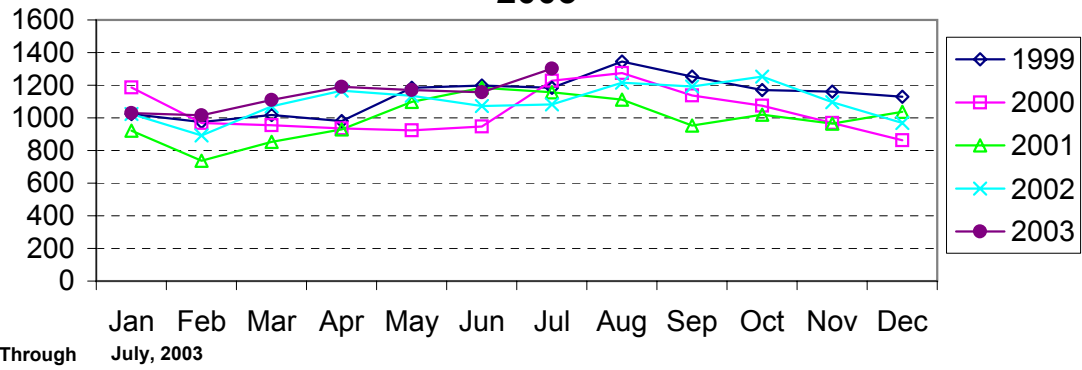
**Commercial Burglary Reported by Month
Charlotte-Mecklenburg Police Department:
1999-2003**



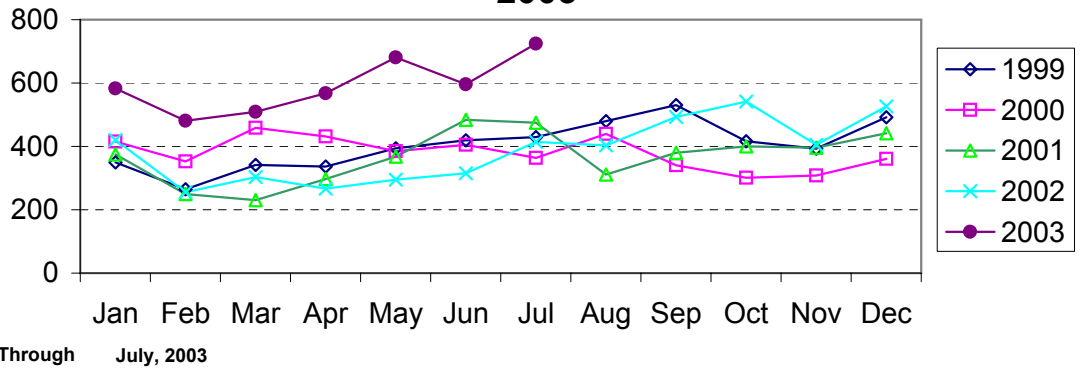
Larceny Reported by Month Charlotte-Mecklenburg Police Department: 1999. 2003



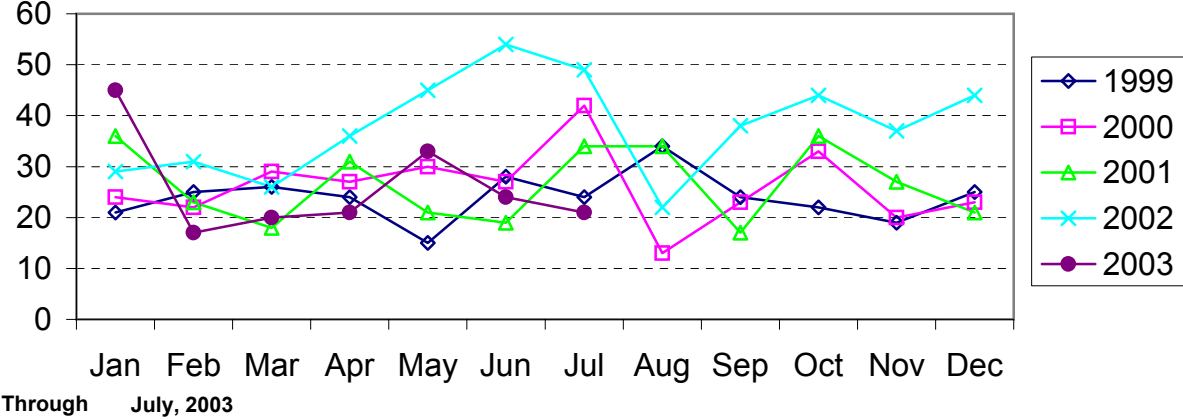
Larceny from Vehicle Reported by Month Charlotte-Mecklenburg Police Department: 1999. 2003



Vehicle Theft Reported by Month Charlotte-Mecklenburg Police Department: 1999. 2003



Arson Reported by Month Charlotte-Mecklenburg Police Department: 1999-2003



Index Offenses Reported by District and Service Area of Occurrence									
West Service Area: Jan-Jul, 2002-2003									
INDEX_CATEGORIES	Adam 2			Adam3			West Service Area		
	2002	2003	% Change	2002	2003	% Change	2002	2003	% Change
MURDER & NON-NEGLIGENT MANSLAUGHTER	4	3	-25.0%	2	7	250.0%	6	10	66.7%
RAPE	18	10	-44.4%	15	23	53.3%	33	33	0.0%
ACTUAL	17	9	-47.1%	11	18	63.6%	28	27	-3.6%
ATTEMPTED	1	1	0.0%	4	5	25.0%	5	6	20.0%
ROBBERY	117	135	15.4%	146	143	-2.1%	263	278	5.7%
ARMED	88	102	15.9%	120	111	-7.5%	208	213	2.4%
STRONG-ARM	29	33	13.8%	26	32	23.1%	55	65	18.2%
AGGRAVATED ASSAULT	224	233	4.0%	240	288	20.0%	464	521	12.3%
BURGLARY	478	484	1.3%	661	770	16.5%	1139	1254	10.1%
RESIDENTIAL	289	333	15.2%	389	497	27.8%	678	830	22.4%
COMMERCIAL	189	151	-20.1%	272	273	0.4%	461	424	-8.0%
LARCENY	855	816	-4.6%	1182	1256	6.3%	2037	2072	1.7%
FROM AUTO	414	416	0.5%	551	604	9.6%	965	1020	5.7%
BICYCLE	12	5	-58.3%	6	7	16.7%	18	12	-33.3%
SHOPLIFTING	109	85	-22.0%	131	104	-20.6%	240	189	-21.3%
OTHERS	320	310	-3.1%	494	541	9.5%	814	851	4.5%
VEHICLE THEFT	150	265	76.7%	297	460	54.9%	447	725	62.2%
ARSON	10	9	-10.0%	29	25	-13.8%	39	34	-12.8%
TOTALS	1856	1955	5.3%	2572	2972	15.6%	4428	4927	11.3%
VIOLENT	363	381	5.0%	403	461	14.4%	766	842	9.9%
PROPERTY	1493	1574	5.4%	2169	2511	15.8%	3662	4085	11.6%

Index Offenses Reported by District and Service Area of Occurrence									
Southeast Service Area: Jan-Jul, 2002-2003									
INDEX_CATEGORIES	Baker 1			Baker 3			Southeast Service Area		
	2002	2003	% Change	2002	2003	% Change	2002	2003	% Change
MURDER & NON-NEGLIGENT MANSLAUGHTER	1	0	-100.0%	3	2	-33.3%	4	2	-50.0%
RAPE	12	12	0.0%	11	17	54.5%	23	29	26.1%
ACTUAL	11	11	0.0%	8	15	87.5%	19	26	36.8%
ATTEMPTED	1	1	0.0%	3	2	-33.3%	4	3	-25.0%
ROBBERY	88	66	-25.0%	141	128	-9.2%	229	194	-15.3%
ARMED	66	51	-22.7%	117	111	-5.1%	183	162	-11.5%
STRONG-ARM	22	15	-31.8%	24	18	-25.0%	46	33	-28.3%
AGGRAVATED ASSAULT	132	115	-12.9%	181	189	4.4%	313	304	-2.9%
BURGLARY	415	491	18.3%	604	572	-5.3%	1019	1063	4.3%
RESIDENTIAL	268	307	14.6%	443	442	-0.2%	711	749	5.3%
COMMERCIAL	147	184	25.2%	161	130	-19.3%	308	314	1.9%
LARCENY	1026	985	-4.0%	1569	1683	7.3%	2595	2668	2.8%
FROM AUTO	424	485	14.4%	873	988	13.2%	1297	1473	13.6%
BICYCLE	11	6	-45.5%	17	28	64.7%	28	34	21.4%
SHOPLIFTING	165	110	-33.3%	178	145	-18.5%	343	255	-25.7%
OTHERS	426	384	-9.9%	501	522	4.2%	927	906	-2.3%
VEHICLE THEFT	120	204	70.0%	222	432	94.6%	342	636	86.0%
ARSON	9	9	0.0%	44	26	-40.9%	53	35	-34.0%
TOTALS	1803	1882	4.4%	2775	3049	9.9%	4578	4931	7.7%
VIOLENT	233	193	-17.2%	336	336	0.0%	569	529	-7.0%
PROPERTY	1570	1689	7.6%	2439	2713	11.2%	4009	4402	9.8%

The data in the district breakdowns does not include a small number of offenses in which the location of the offense was unknown or was entered without a valid tract assignment. Districts are not equal in geographic size, demographics, zoning/development, and other factors that influence the rate of crimes committed in an area. Therefore, the comparison of raw offense totals across districts is not advisable.

Index Offenses Reported by District and Service Area of Occurrence									
Northeast Service Area: Jan-Jul, 2002-2003									
INDEX_CATEGORIES	Charlie 1			Charlie 3			Northeast Service Area		
	2002	2003	% Change	2002	2003	% Change	2002	2003	% Change
MURDER & NON-NEGLIGENT MANSLAUGHTER	4	4	0.0%	3	3	0.0%	7	7	0.0%
RAPE	10	19	90.0%	19	15	-21.1%	29	34	17.2%
ACTUAL	8	17	112.5%	18	14	-22.2%	26	31	19.2%
ATTEMPTED	2	2	0.0%	1	1	0.0%	3	3	0.0%
ROBBERY	122	97	-20.5%	157	142	-9.6%	279	239	-14.3%
ARMED	96	77	-19.8%	130	113	-13.1%	226	190	-15.9%
STRONG-ARM	25	20	-20.0%	27	29	7.4%	52	49	-5.8%
AGGRAVATED ASSAULT	204	187	-8.3%	227	236	4.0%	431	423	-1.9%
BURGLARY	554	713	28.7%	698	661	-5.3%	1252	1374	9.7%
RESIDENTIAL	371	495	33.4%	520	502	-3.5%	891	997	11.9%
COMMERCIAL	183	218	19.1%	178	159	-10.7%	361	377	4.4%
LARCENY	2273	2174	-4.4%	1217	1328	9.1%	3490	3502	0.3%
FROM AUTO	1238	1234	-0.3%	607	705	16.1%	1845	1939	5.1%
BICYCLE	9	8	-11.1%	12	11	-8.3%	21	19	-9.5%
SHOPLIFTING	301	188	-37.5%	128	126	-1.6%	429	314	-26.8%
OTHERS	725	744	2.6%	470	486	3.4%	1195	1230	2.9%
VEHICLE THEFT	206	478	132.0%	222	493	122.1%	428	971	126.9%
ARSON	23	22	-4.3%	43	19	-55.8%	66	41	-37.9%
TOTALS	3396	3694	8.8%	2586	2897	12.0%	5982	6591	10.2%
VIOLENT	340	307	-9.7%	406	396	-2.5%	746	703	-5.8%
PROPERTY	3056	3387	10.8%	2180	2501	14.7%	5236	5888	12.5%

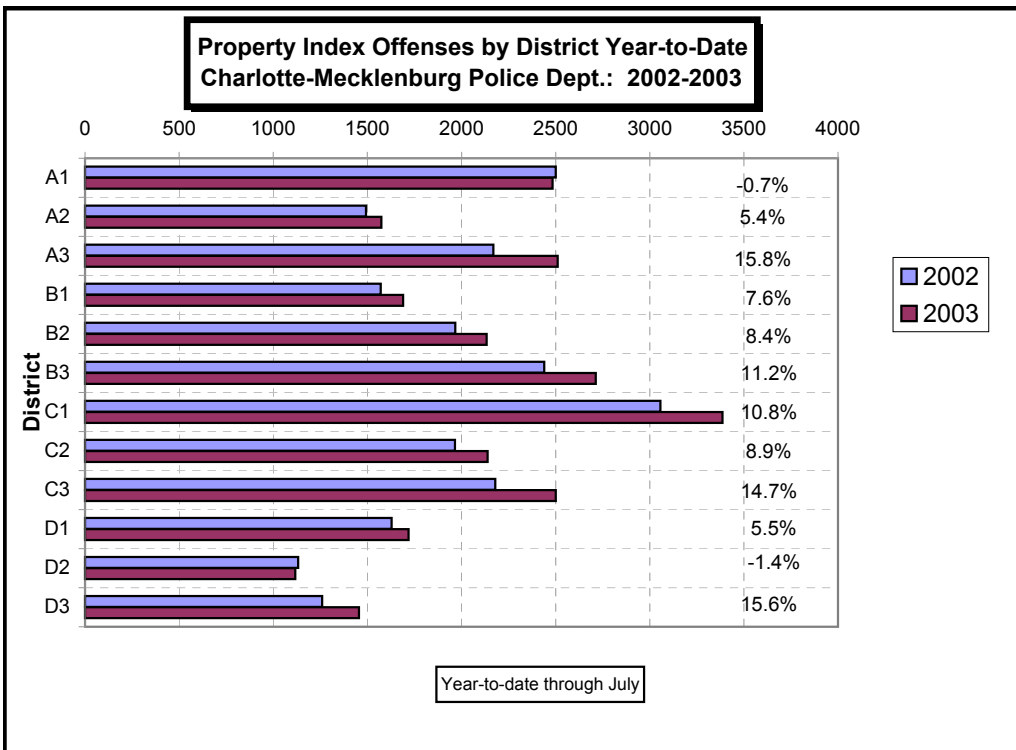
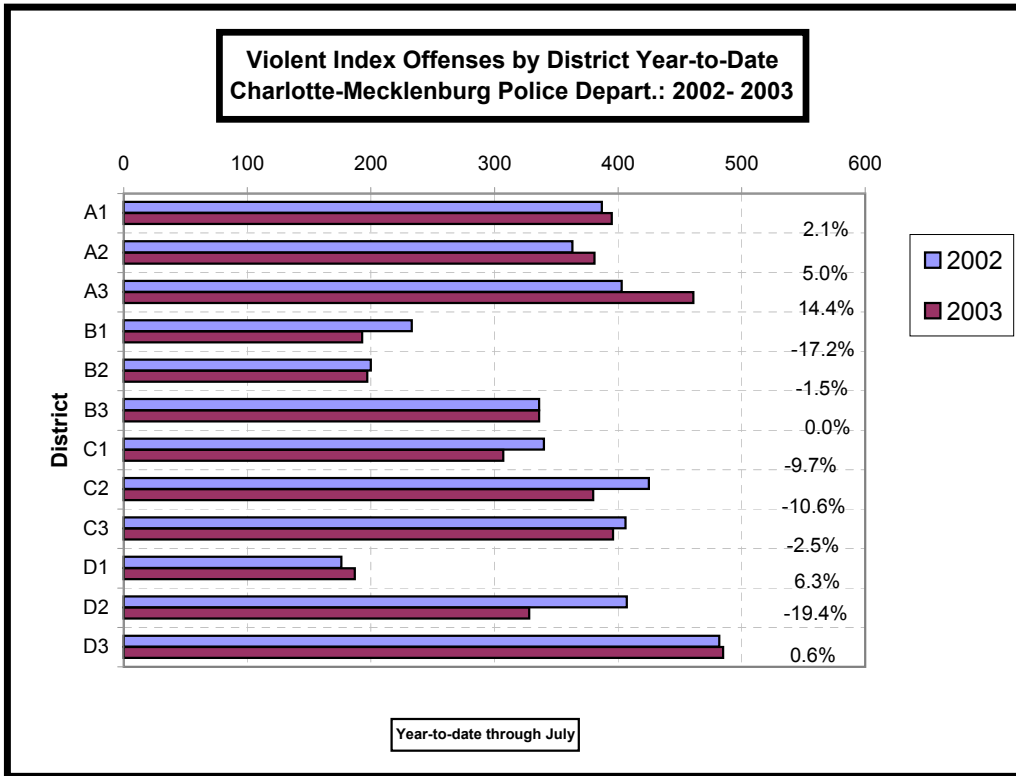
Index Offenses Reported by District and Service Area of Occurrence									
Central Service Area: Jan-Jul, 2002-2003									
INDEX_CATEGORIES	David 1			David 2			Central Service Area		
	2002	2003	% Change	2002	2003	% Change	2002	2003	% Change
MURDER & NON-NEGLIGENT MANSLAUGHTER	2	2	0.0%	10	3	-70.0%	12	5	-58.3%
RAPE	8	10	25.0%	11	11	0.0%	19	21	10.5%
ACTUAL	8	10	25.0%	8	9	12.5%	16	19	18.8%
ATTEMPTED	0	0	NA	3	2	-33.3%	3	2	-33.3%
ROBBERY	77	69	-10.4%	101	101	0.0%	178	170	-4.5%
ARMED	38	41	7.9%	77	77	0.0%	115	118	2.6%
STRONG-ARM	39	28	-28.2%	24	24	0.0%	63	52	-17.5%
AGGRAVATED ASSAULT	89	106	19.1%	285	213	-25.3%	374	319	-14.7%
BURGLARY	223	240	7.6%	360	314	-12.8%	583	554	-5.0%
RESIDENTIAL	95	126	32.6%	245	238	-2.9%	340	364	7.1%
COMMERCIAL	128	114	-10.9%	115	76	-33.9%	243	190	-21.8%
LARCENY	1301	1164	-10.5%	594	558	-6.1%	1895	1722	-9.1%
FROM AUTO	677	658	-2.8%	289	304	5.2%	966	962	-0.4%
BICYCLE	10	3	-70.0%	1	8	700.0%	11	11	0.0%
SHOPLIFTING	52	32	-38.5%	38	19	-50.0%	90	51	-43.3%
OTHERS	562	471	-16.2%	266	227	-14.7%	828	698	-15.7%
VEHICLE THEFT	102	303	197.1%	164	233	42.1%	266	536	101.5%
ARSON	3	11	266.7%	15	12	-20.0%	18	23	27.8%
TOTALS	1805	1905	5.5%	1540	1445	-6.2%	3345	3350	0.1%
VIOLENT	176	187	6.3%	407	328	-19.4%	583	515	-11.7%
PROPERTY	1629	1718	5.5%	1133	1117	-1.4%	2762	2835	2.6%

The data in the district breakdowns does not include a small number of offenses in which the location of the offense was unknown or was entered without a valid tract assignment. Districts are not equal in geographic size, demographics, zoning/development, and other factors that influence the rate of crimes committed in an area. Therefore, the comparison of raw offense totals across districts is not advisable.

Index Offenses Reported by District and Service Area of Occurrence									
East Service Area: Jan-Jul, 2002-2003									
INDEX_CATEGORIES	Charlie 2			David 3			East Service Area		
	2002	2003	% Change	2002	2003	% Change	2002	2003	% Change
MURDER & NON-NEGLIGENT MANSLAUGHTER	1	1	0.0%	8	4	-50.0%	9	5	-44.4%
RAPE	14	9	-35.7%	10	12	20.0%	24	21	-12.5%
ACTUAL	12	8	-33.3%	10	12	20.0%	22	20	-9.1%
ATTEMPTED	2	1	-50.0%	0	0	NA	2	1	-50.0%
ROBBERY	172	198	15.1%	161	193	19.9%	333	391	17.4%
ARMED	131	156	19.1%	133	155	16.5%	264	311	17.8%
STRONG-ARM	41	42	2.4%	28	38	35.7%	69	80	15.9%
AGGRAVATED ASSAULT	238	172	-27.7%	303	276	-8.9%	541	448	-17.2%
BURGLARY	522	518	-0.8%	318	422	32.7%	840	940	11.9%
RESIDENTIAL	419	367	-12.4%	192	289	50.5%	611	656	7.4%
COMMERCIAL	103	151	46.6%	126	133	5.6%	229	284	24.0%
LARCENY	1260	1319	4.7%	714	686	-3.9%	1974	2005	1.6%
FROM AUTO	459	604	31.6%	330	353	7.0%	789	957	21.3%
BICYCLE	6	11	83.3%	8	6	-25.0%	14	17	21.4%
SHOPLIFTING	388	304	-21.6%	78	44	-43.6%	466	348	-25.3%
OTHERS	407	400	-1.7%	298	283	-5.0%	705	683	-3.1%
VEHICLE THEFT	168	296	76.2%	213	341	60.1%	381	637	67.2%
ARSON	15	6	-60.0%	14	6	-57.1%	29	12	-58.6%
TOTALS	2390	2519	5.4%	1741	1940	11.4%	4131	4459	7.9%
VIOLENT	425	380	-10.6%	482	485	0.6%	907	865	-4.6%
PROPERTY	1965	2139	8.9%	1259	1455	15.6%	3224	3594	11.5%

Index Offenses Reported by District and Service Area of Occurrence									
South Service Area: Jan-Jul, 2002-2003									
INDEX_CATEGORIES	Adam 1			Baker 2			South Service Area		
	2002	2003	% Change	2002	2003	% Change	2002	2003	% Change
MURDER & NON-NEGLIGENT MANSLAUGHTER	5	3	-40.0%	1	1	0.0%	6	4	-33.3%
RAPE	22	14	-36.4%	11	11	0.0%	33	25	-24.2%
ACTUAL	19	12	-36.8%	10	9	-10.0%	29	21	-27.6%
ATTEMPTED	3	2	-33.3%	1	2	100.0%	4	4	0.0%
ROBBERY	112	165	47.3%	64	71	10.9%	176	236	34.1%
ARMED	89	120	34.8%	50	52	4.0%	139	172	23.7%
STRONG-ARM	23	35	52.2%	14	19	35.7%	37	54	45.9%
AGGRAVATED ASSAULT	248	213	-14.1%	124	114	-8.1%	372	327	-12.1%
BURGLARY	508	510	0.4%	497	496	-0.2%	1005	1006	0.1%
RESIDENTIAL	313	342	9.3%	316	382	20.9%	629	724	15.1%
COMMERCIAL	195	168	-13.8%	130	114	-12.3%	325	282	-13.2%
LARCENY	1722	1585	-8.0%	1278	1401	9.6%	3000	2986	-0.5%
FROM AUTO	887	762	-14.1%	680	779	14.6%	1567	1541	-1.7%
BICYCLE	8	13	62.5%	11	5	-54.5%	19	18	-5.3%
SHOPLIFTING	257	239	-7.0%	105	101	-3.8%	362	340	-6.1%
OTHERS	570	571	0.2%	482	516	7.1%	1052	1087	3.3%
VEHICLE THEFT	246	372	51.2%	155	222	43.2%	401	594	48.1%
ARSON	24	16	-33.3%	37	14	-62.2%	61	30	-50.8%
TOTALS	2887	2878	-0.3%	2167	2330	7.5%	5054	5208	3.0%
VIOLENT	387	395	2.1%	200	197	-1.5%	587	592	0.9%
PROPERTY	2500	2483	-0.7%	1967	2133	8.4%	4467	4616	3.3%

The data in the district breakdowns does not include a small number of offenses in which the location of the offense was unknown or was entered without a valid tract assignment. Districts are not equal in geographic size, demographics, zoning/development, and other factors that influence the rate of crimes committed in an area. Therefore, the comparison of raw offense totals across districts is not advisable.



The data in the district breakdowns does not include a small number of offenses in which the location of the offense was unknown or was entered without a valid tract assignment. Districts are not equal in geographic size, demographics, zoning/development, and other factors that influence the rate of crimes committed in an area. Therefore, the comparison of raw offense totals across districts is not advisable.

Arrests by Charlotte-Mecklenburg Police Department
Year-To-Date: 2002-2003
(Through July)

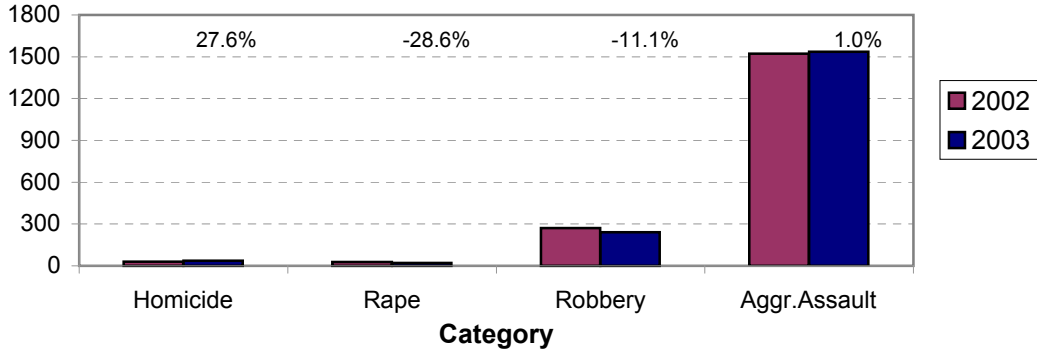
CATEGORY	ADULTS (AGE 18 & OLDER):			JUVENILES (UNDER 18):			TOTAL ARRESTS:		
	2002 Y-T-D	2003 Y-T-D	% CHANGE	2002 Y-T-D	2003 Y-T-D	% CHANGE	2002 Y-T-D	2003 Y-T-D	% CHANGE
Murder/Non-Negligent Manslaughter	29	34	17.2%	0	3	NA	29	37	27.6%
Negligent & Vehicular Manslaughter	5	1	-80.0%	0	0	NA	5	1	-80.0%
Rape	26	16	-38.5%	2	4	100.0%	28	20	-28.6%
Robbery	196	174	-11.2%	74	66	-10.8%	270	240	-11.1%
Aggravated Assault	1361	1334	-2.0%	161	203	26.1%	1522	1537	1.0%
Burglary	292	291	-0.3%	129	151	17.1%	421	442	5.0%
Larceny	928	851	-8.3%	388	405	4.4%	1316	1256	-4.6%
Vehicle Theft	72	104	44.4%	71	248	249.3%	143	352	146.2%
Non-Aggravated Assault	997	1009	1.2%	429	521	21.4%	1426	1530	7.3%
Arson	15	16	6.7%	24	16	-33.3%	39	32	-17.9%
Forgery/Counterfiet	86	64	-25.6%	0	3	NA	86	67	-22.1%
Fraud	427	303	-29.0%	4	6	50.0%	431	309	-28.3%
Embezzlement	83	63	-24.1%	7	4	-42.9%	90	67	-25.6%
Stolen Property	278	330	18.7%	60	98	63.3%	338	428	26.6%
Vandalism	144	153	6.3%	105	114	8.6%	249	267	7.2%
Weapons	275	291	5.8%	30	42	40.0%	305	333	9.2%
Prostitution	136	195	43.4%	1	2	100.0%	137	197	43.8%
Sex Offenses	149	125	-16.1%	18	30	66.7%	167	155	-7.2%
Drugs	1853	1958	5.7%	188	189	0.5%	2041	2147	5.2%
Gambling	1	19	1800.0%	0	0	NA	1	19	1800.0%
Offenses vs. Family	26	6	-76.9%	0	0	NA	26	6	-76.9%
DUI	1505	1240	-17.6%	9	7	-22.2%	1514	1247	-17.6%
Liquor	169	86	-49.1%	6	8	33.3%	175	94	-46.3%
Disorder Conduct	297	321	8.1%	74	159	114.9%	371	480	29.4%
Other Non-Traffic	4206	4303	2.3%	381	461	21.0%	4587	4764	3.9%
VIOLENT INDEX¹	1612	1558	-3.3%	237	276	16.5%	1849	1834	-0.8%
PROPERTY INDEX²	1307	1262	-3.4%	612	820	34.0%	1919	2082	8.5%
INDEX SUBTOTAL	2919	2820	-3.4%	849	1096	29.1%	3768	3916	3.9%
PART 2 SUBTOTAL³	10637	10467	-1.6%	1312	1644	25.3%	11949	12111	1.4%
TOTAL	13556	13287	-2.0%	2161	2740	26.8%	15717	16027	2.0%

¹Violent Index includes murder and non-negligent manslaughter, rape, robbery, and aggravated assault.

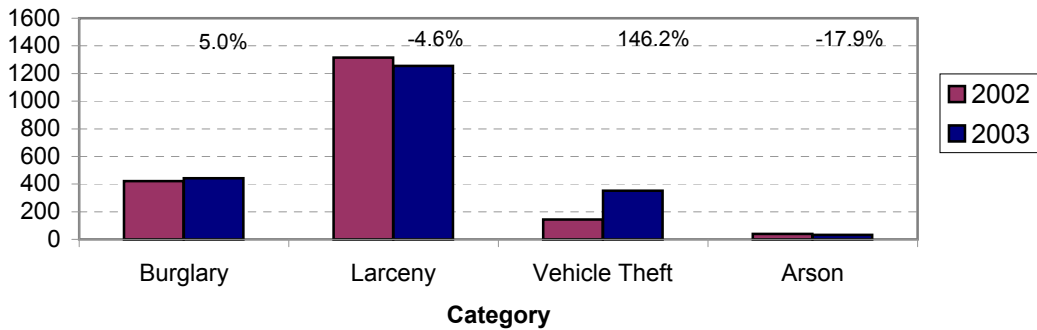
²Property Index includes burglary, larceny, vehicle theft, and arson.

³Part 2 crimes include non-traffic crimes not counted in the Index totals.

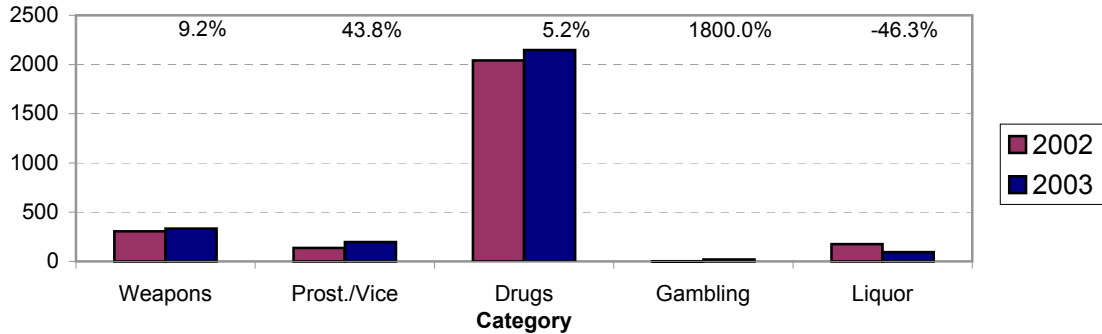
**Violent Index Arrests Year-to-Date
Charlotte-Mecklenburg Police Department: 2002-2003
(Through July)**



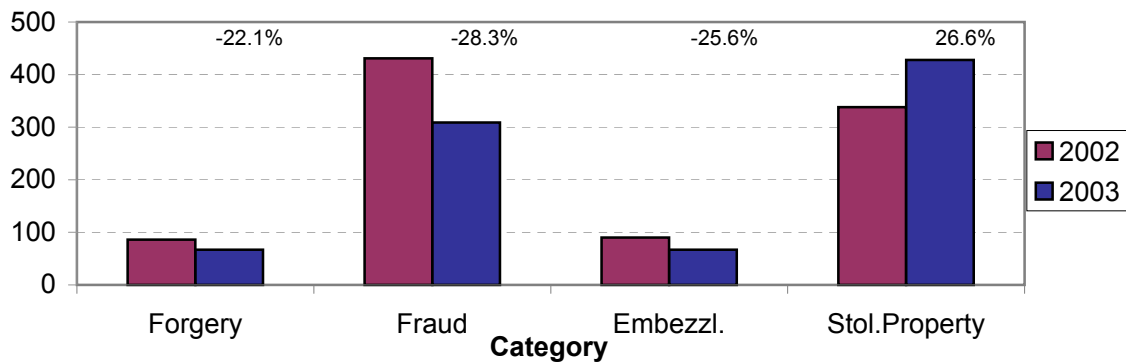
**Property Index Arrests Year-to-Date
Charlotte-Mecklenburg Police Department: 2002-2003
(Through July)**



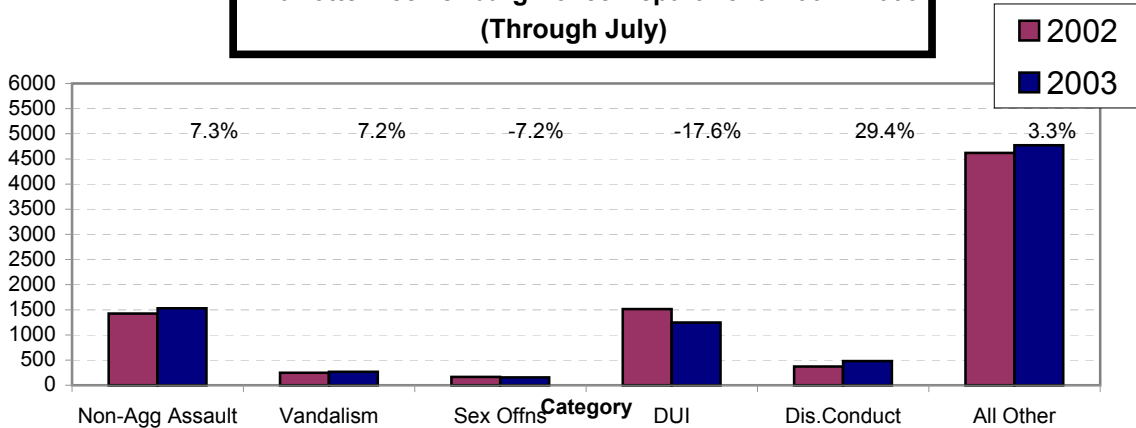
**Arrests for Vice/CCW/Drugs/Etc. Year-to-Date
Charlotte-Mecklenburg Police Department: 2002 - 2003
(Through July)**



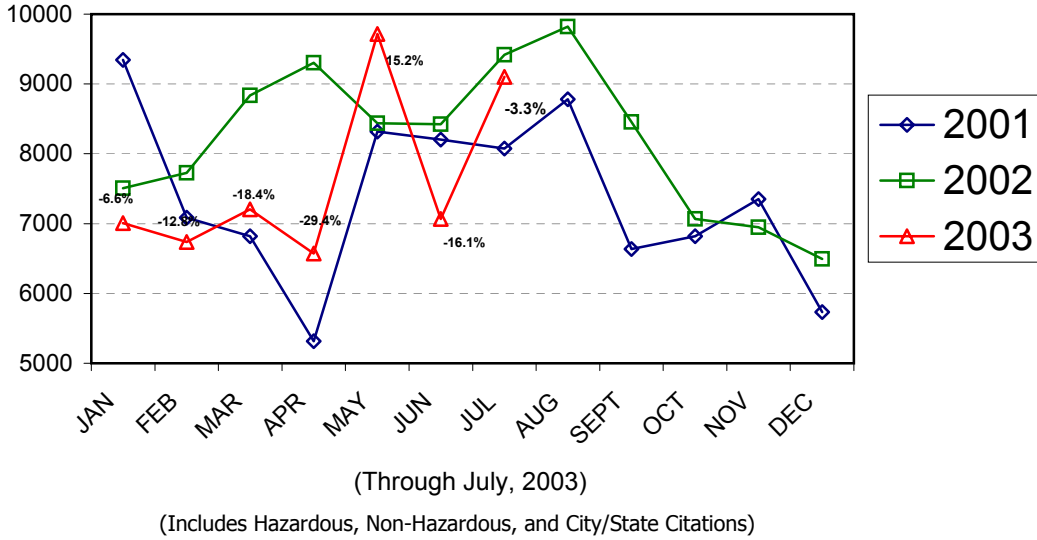
**Arrests for Property/White Collar Crime Year-to-Date
Charlotte-Mecklenburg Police Department: 2002 - 2003
(Through July)**



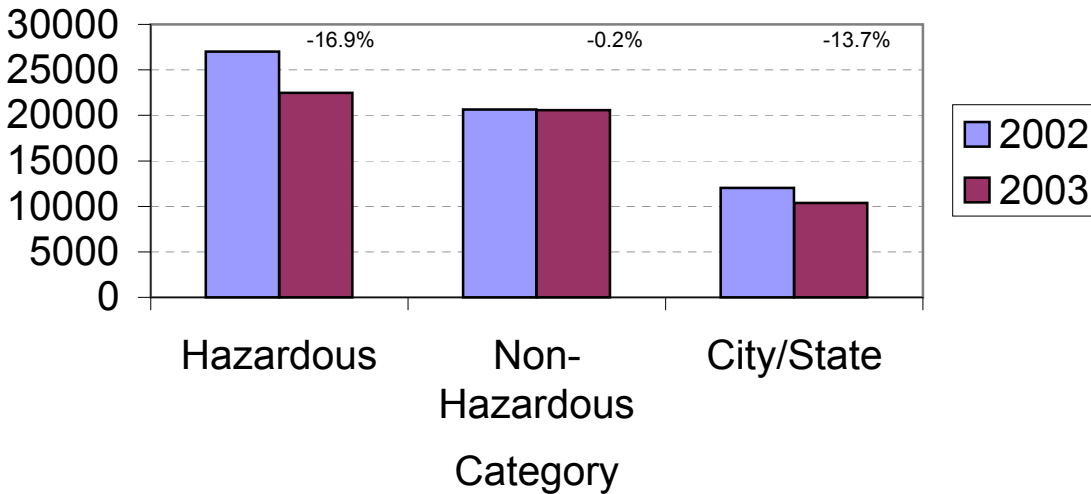
**Arrests for Other Categories Year-to-Date
Charlotte-Mecklenburg Police Department: 2002 - 2003
(Through July)**



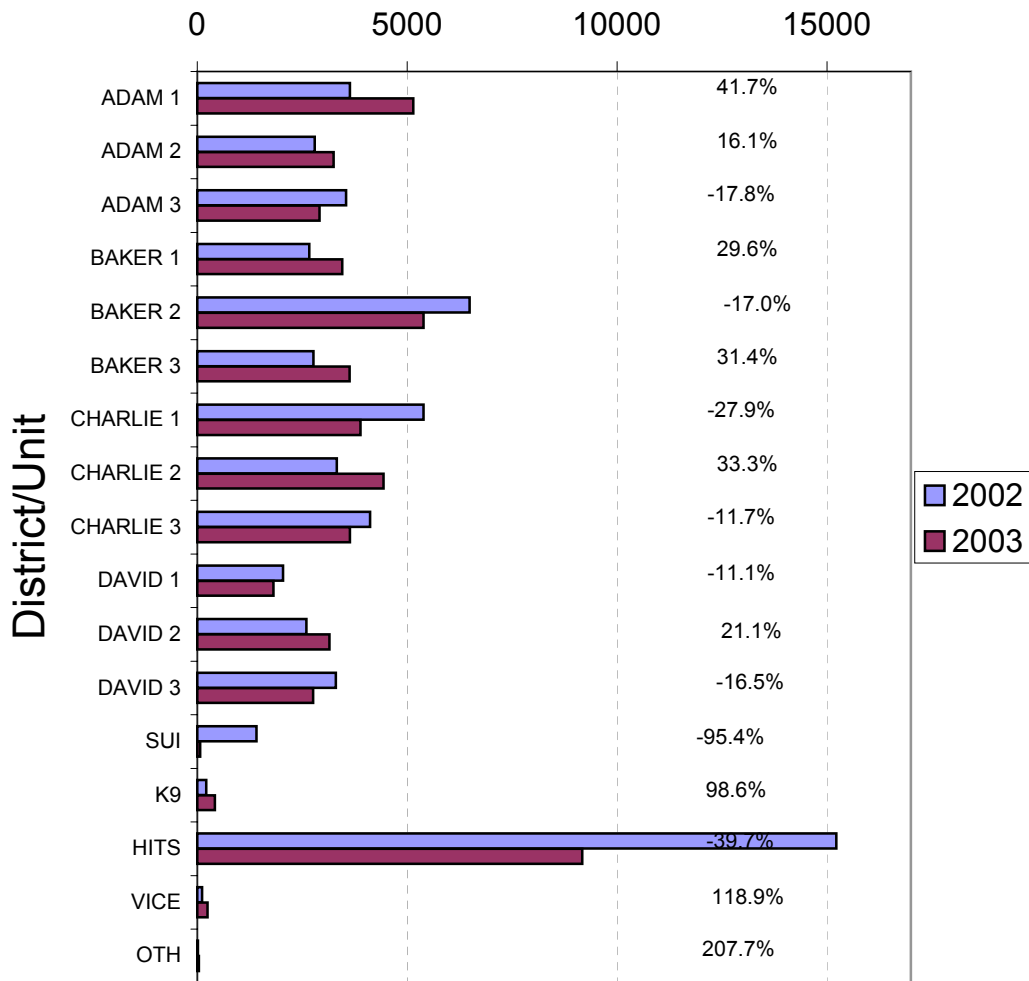
**Total Citation Enforcement by Month
Charlotte-Mecklenburg Police Dept: 2001-2003**



**CMPD Citation Enforcement by Category
Year-to-Date, 2002 - 2003
(Through July, 2003)**



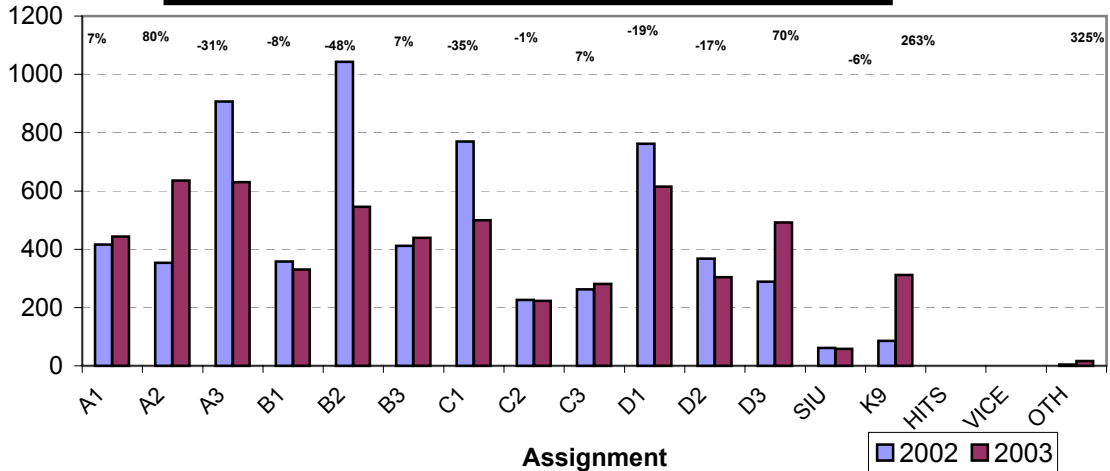
**Citations Issued Year-to-Date by CMPD Districts/Units
2002 - 2003
(Through July, 2003)**



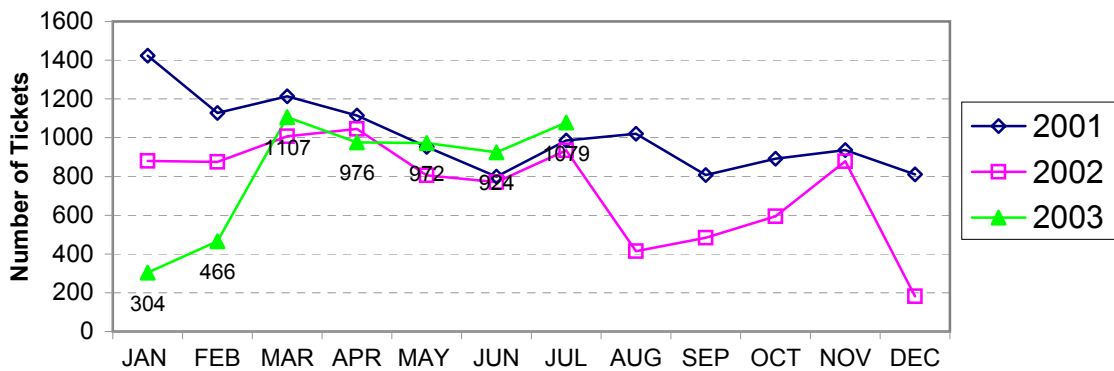
**Citations Issued by the Charlotte Mecklenburg Police Depart Year-to-Date
(Through July, 2003)**

Total Citations	2002	2003	% Change
Hazardous	27,010	22,457	-16.9%
Non-Hazardous	20,630	20,591	-0.2%
Other City/State Statute/Ordinance	12,011	10,360	-13.7%
Total	59,651	53,408	-10.5%

**Warning Tickets Issued by CMPD District/Unit
Year-to-Date, 2002 - 2003
Through July, 2003**



**Total Warning Tickets Issued by CMPD
By Month: 2001 - 2003**



**Warning Tickets Issued by CMPD Year-to-Date
Through July, 2003**

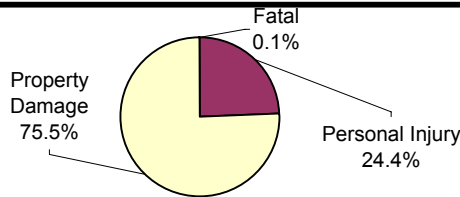
	2002	2003	% Change
Total Warning Tickets	6319	5828	-7.8%

**Traffic Collision Reports
Charlotte-Mecklenburg Police Department
Year-to-Date: 2002-2003
(Through July)**

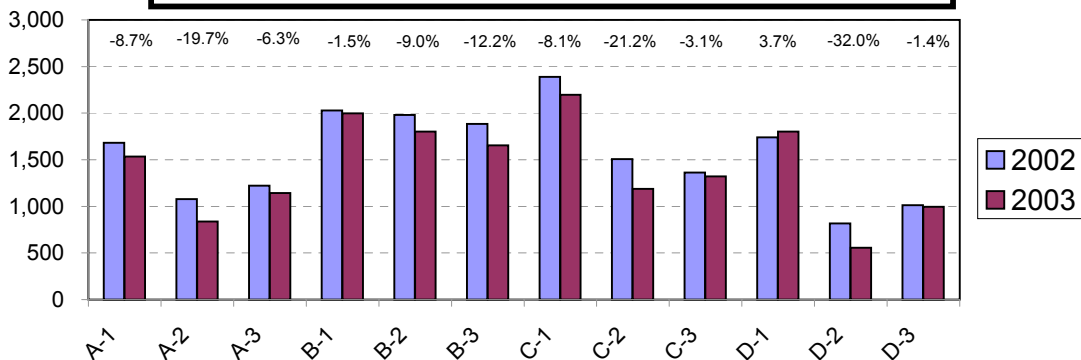
<u>Type</u>	<u>2002</u>	<u>2003</u>	<u>% Change</u>
Fatal Collisions	39	30	-23.1%
Vehicle Occupants Killed	29	32	10.3%
Pedestrians Killed	11	3	-72.7%
Personal Injury Collisions	4517	4163	-8.0%
Property Damage Collisions	14137	12957	-8.3%
Total Collisions	18693	17150	-8.3%

* The number of fatal collisions and the number of persons killed in those incidents is taken from the HITS file. Their records are updated for deaths that occur after the initial report is filed.

**Traffic Collisions Reported by Type
Charlotte-Mecklenburg Police Department:
2003 Year-to-Date
(Through July)**



**Traffic Collisions Reported by Charlotte-Mecklenburg Police Dept.
Year-to-Date By Location (District) of Accident : 2002 -2003
(Through July)**



Uniform Crime Reporting Procedures:

The Charlotte-Mecklenburg Police Department reports offense and arrest statistics in accordance with standard Uniform Crime Reporting (UCR) guidelines. UCR policy states that any adjustments to previous months can be made on the current month's report:

...In tabulating crime counts, an agency may find that offense totals for past months require adjustments due to developments in the investigation or other handling of the matter. It may be necessary to adjust totals reported to UCR for the past month or prior months. Needed adjustments can be made on the current month's report and do not affect the reliability of the figures in that such adjustments tend to equalize each other from month to month over a period of time.

- *Uniform Crime Reporting Handbook*, FBI, 1984, p. 42-43

We are required to report crime monthly to the UCR program, and we do therefore make an effort to process monthly changes in a timely manner. However, occasionally due to the review and processing required for reclassifying, unfounding or clearing cases, the current month's totals may reflect the processing of a backlog of these changes from previous months.

Users of the data are cautioned that conclusions about substantial changes in crime trends or in clearance rates based on only a single month's data or trend may reflect some of these adjustments. For this reason, in addition to the monthly and year-to-date trends on Page 1, the monthly report routinely includes a comparison for the previous 12 months (p. 4), as well as graphs that provide seasonal/monthly comparisons over a five-year period (p. 5-8).

We do make an effort to present the most accurate information available at the time this report is published. However, errors in compiling the data and charts do sometimes occur, so please notify the Research, Planning, and Analysis office if you have any questions about the data in this report.

The formats for this report were revised with the assistance of Officer David Padgett, who converted a number of spreadsheets, graphs, and charts from old software and continues to assist in UCR data preparation each month.

V. L. Sorban
Research, Planning & Analysis Bureau