

**CHARLOTTE-MECKLENBURG POLICE DEPARTMENT
MONTHLY SUMMARY REPORT
JANUARY, 2004**

**Darrel Stephens
Chief of Police**

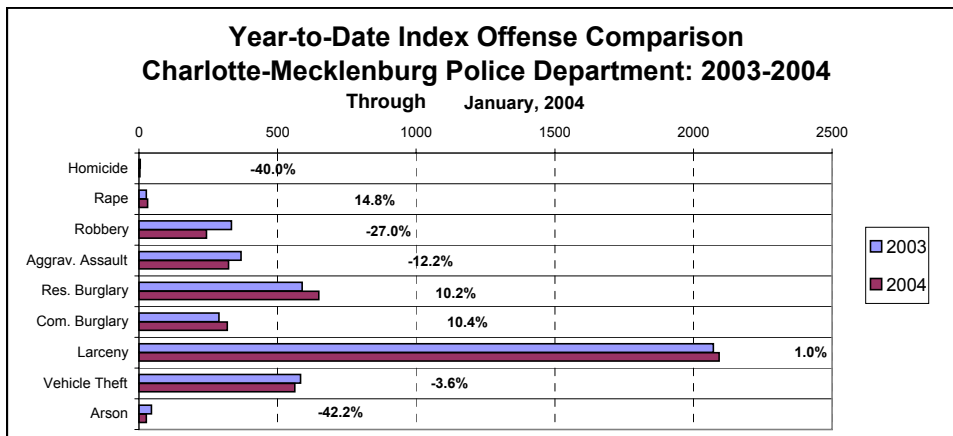
INDEX OFFENSES REPORTED TO CHARLOTTE-MECKLENBURG POLICE DEPARTMENT

January, 2004 INDEX OFFENSES	# THIS MONTH	% OF ALL INDEX	# LAST MONTH	MONTHLY % CHANGE	SAME MONTH LAST YEAR	MONTHLY % CHANGE	THIS YEAR TO DATE	LAST YEAR TO DATE	ANNUAL % CHANGE
HOMICIDE (MURDER & NON- NEGLIGENT MANSLAUGHTER)	3	0.1%	3	0.0%	5	-40.0%	3	5	-40.0%
RAPE TOTAL	31	0.7%	21	47.6%	27	14.8%	31	27	14.8%
ACTUAL	29	0.7%	22	31.8%	26	11.5%	29	26	11.5%
ATTEMPT	2	0.0%	-1	-300.0%	1	100.0%	2	1	100.0%
ROBBERY TOTAL	243	5.7%	271	-10.3%	333	-27.0%	243	333	-27.0%
ARMED	190	4.5%	225	-15.6%	268	-29.1%	190	268	-29.1%
STRONG-ARM	53	1.2%	46	15.2%	65	-18.5%	53	65	-18.5%
AGGRAVATED ASSAULT TOTAL	323	7.6%	268	20.5%	368	-12.2%	323	368	-12.2%
BURGLARY TOTAL	967	22.8%	923	4.8%	877	10.3%	967	877	10.3%
RESIDENTIAL	649	15.3%	681	-4.7%	589	10.2%	649	589	10.2%
COMMERCIAL	318	7.5%	242	31.4%	288	10.4%	318	288	10.4%

FORCE	783	18.4%	729	7.4%	710	10.3%	783	710	10.3%
NO FORCE	123	2.9%	125	-1.6%	119	3.4%	123	119	3.4%
ATTEMPT	61	1.4%	69	-11.6%	48	27.1%	61	48	27.1%
LARCENY TOTAL	2092	49.3%	2069	1.1%	2072	1.0%	2092	2072	1.0%
\$200 AND OVER	1011	23.8%	951	6.3%	1029	-1.7%	1011	1029	-1.7%
\$50 TO \$200	380	8.9%	432	-12.0%	367	3.5%	380	367	3.5%
UNDER \$50	701	16.5%	686	2.2%	676	3.7%	701	676	3.7%

FROM AUTO	1070	25.2%	985	8.6%	1030	3.9%	1070	1030	3.9%
BICYCLE	18	0.4%	10	80.0%	9	100.0%	18	9	100.0%
SHOPLIFTING	245	5.8%	255	-3.9%	208	17.8%	245	208	17.8%
OTHERS	759	17.9%	819	-7.3%	825	-8.0%	759	825	-8.0%
VEHICLE THEFT TOTAL	562	13.2%	500	12.4%	583	-3.6%	562	583	-3.6%
ARSON TOTAL	26	0.6%	23	13.0%	45	-42.2%	26	45	-42.2%
TOTALS	4247	100.0%	4078	4.1%	4310	-1.5%	4247	4310	-1.5%
VIOLENT PROPERTY	600 3647	14.1% 85.9%	563 3515	6.6% 3.8%	733 3577	-18.1% 2.0%	600 3647	733 3577	-18.1% 2.0%

NOTE: These totals include offenses reported to the Charlotte-Mecklenburg Police Department in accordance with the Uniform Crime Reporting Program. Totals for homicide do not include cases investigated by the police but classed by UCR guidelines as negligent manslaughter or as "justifiable homicide."



INDEX CLEARANCES REPORTED BY THE CHARLOTTE-MECKLENBURG POLICE DEPARTMENT

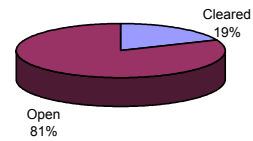
January, 2004 INDEX CLEARANCES	THIS MONTH:		LAST MONTH:		SAME MO. LAST YR:		THIS YEAR TO DATE:		LAST YEAR TO DATE:	
	NO.	%	NO.	%	NO.	%	NO.	%	NO.	%
MURDER & NON-NEGLIGENT MANSLAUGHTER	1	33.3%	10	333.3%	4	80.0%	1	33.3%	4	80.0%
RAPE TOTAL	30	96.8%	22	104.8%	20	74.1%	30	96.8%	20	74.1%
ACTUAL	28	96.6%	23	104.5%	19	73.1%	28	96.6%	19	73.1%
ATTEMPT	2	100.0%	-1	100.0%	1	100.0%	2	100.0%	1	100.0%
ROBBERY TOTAL	97	39.9%	87	32.1%	60	18.0%	97	39.9%	60	18.0%
ARMED	72	37.9%	72	32.0%	39	14.6%	72	37.9%	39	14.6%
STRONG-ARM	25	47.2%	15	32.6%	21	32.3%	25	47.2%	21	32.3%
AGGRAVATED ASSAULT TOTAL	213	65.9%	205	76.5%	242	65.8%	213	65.9%	242	65.8%
BURGLARY TOTAL	158	16.3%	45	4.9%	90	10.3%	158	16.3%	90	10.3%
RESIDENTIAL	126	19.4%	36	5.3%	68	11.5%	126	19.4%	68	11.5%
COMMERCIAL	32	10.1%	9	3.7%	22	7.6%	32	10.1%	22	7.6%
LARCENY TOTAL	401	19.2%	224	10.8%	317	15.3%	401	19.2%	317	15.3%
FROM AUTO	39	3.6%	30	3.0%	46	4.5%	39	3.6%	46	4.5%
BICYCLE	3	16.7%	0	0.0%	2	22.2%	3	16.7%	2	22.2%
SHOPLIFTING	136	55.5%	127	49.8%	133	63.9%	136	55.5%	133	63.9%
OTHERS	223	29.4%	67	8.2%	136	16.5%	223	29.4%	136	16.5%
VEHICLE THEFT TOTAL	107	19.0%	87	17.4%	116	19.9%	107	19.0%	116	19.9%
ARSON TOTAL	9	34.6%	9	39.1%	17	37.8%	9	34.6%	17	37.8%
TOTALS	1016	23.9%	689	16.9%	866	20.1%	1016	23.9%	866	20.1%
VIOLENT PROPERTY	341	56.8%	324	57.5%	326	44.5%	341	56.8%	326	44.5%
	675	18.5%	365	10.4%	540	15.1%	675	18.5%	540	15.1%

NOTE: Clearances are reported in accordance with Uniform Crime Report guidelines. Since clearances are not counted until they are entered into the Records system, any delays in processing may result in some clearances being reported in succeeding months.

**Year-to-Date Violent Index Clearance Rate
Charlotte-Mecklenburg Police Department: 2004
January, 2004**

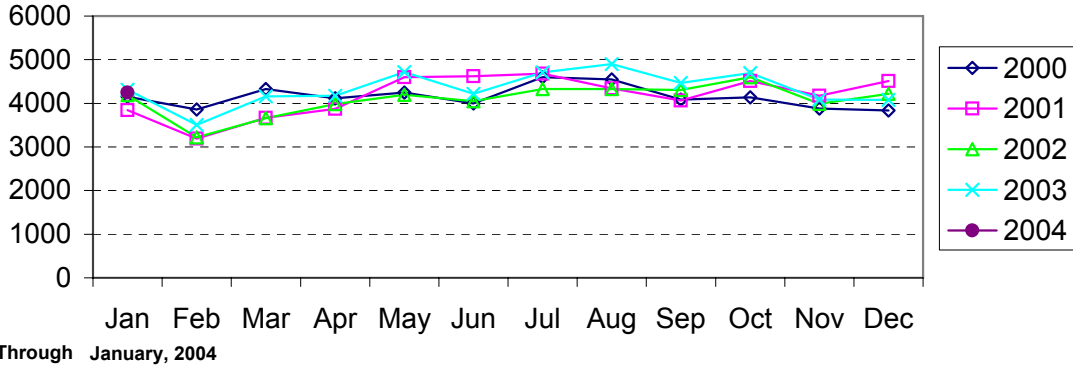


**Year-to-Date Property Index Clearance Rate
Charlotte-Mecklenburg Police Department: 2004
January, 2004**

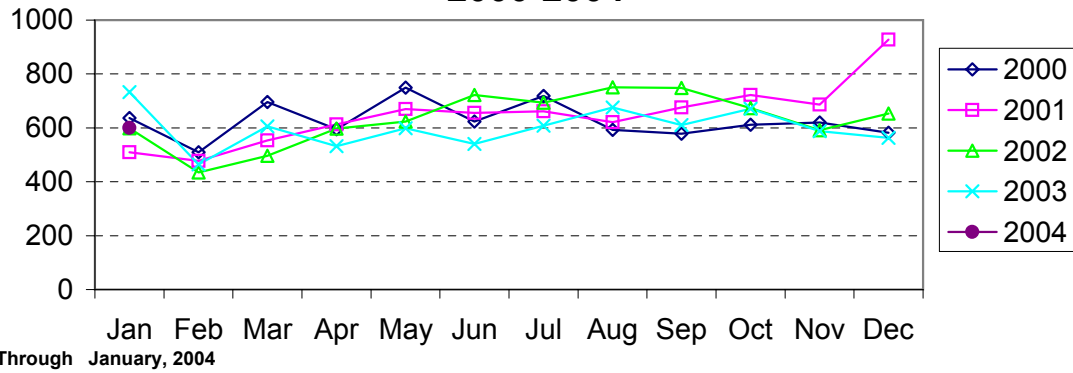


Clearance rates for crime reporting are calculated by dividing the number of crimes cleared during a designated time span by the number of crimes reported in the same period and converting the result to a percentage (multiplying by 100). Since cases from previous reporting periods can be cleared during the designated time span, the rate may be higher than 100%.

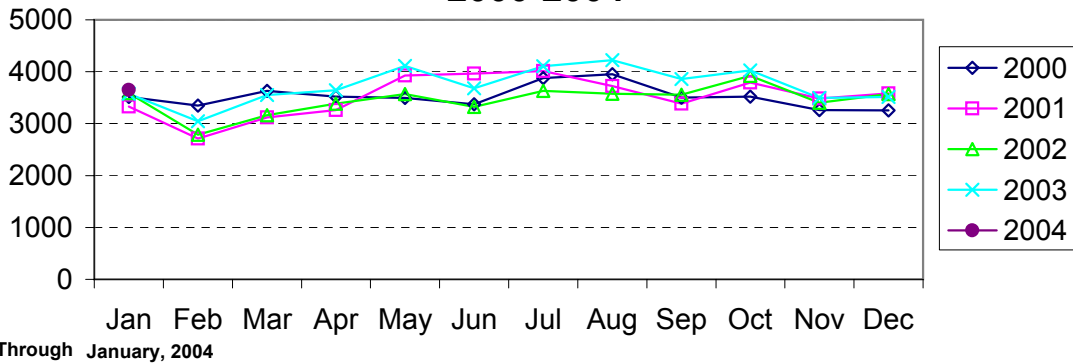
Index Offenses Reported by Month Charlotte-Mecklenburg Police Department: 2000-2004



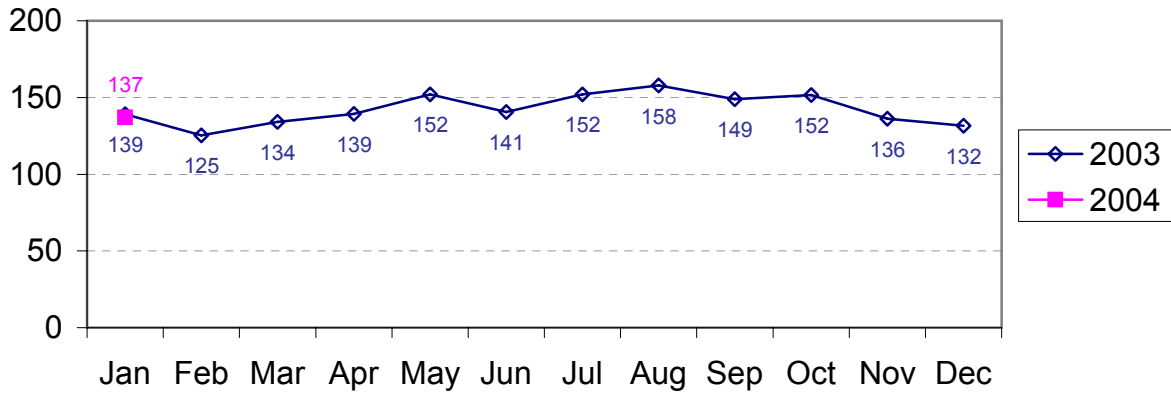
Violent Index Offenses Reported by Month Charlotte-Mecklenburg Police Department: 2000-2004



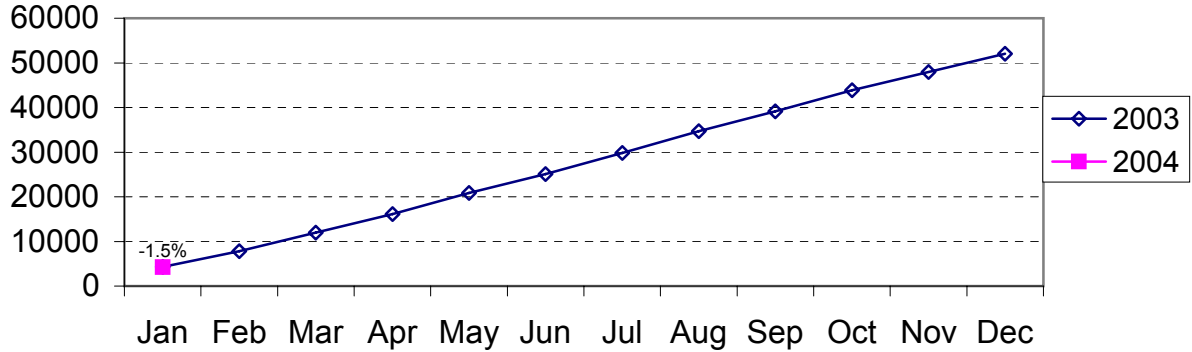
Property Index Offenses Reported by Month Charlotte-Mecklenburg Police Department: 2000-2004



Index Offense Per Day Average by Month Charlotte-Mecklenburg Police Department: 2003-2004

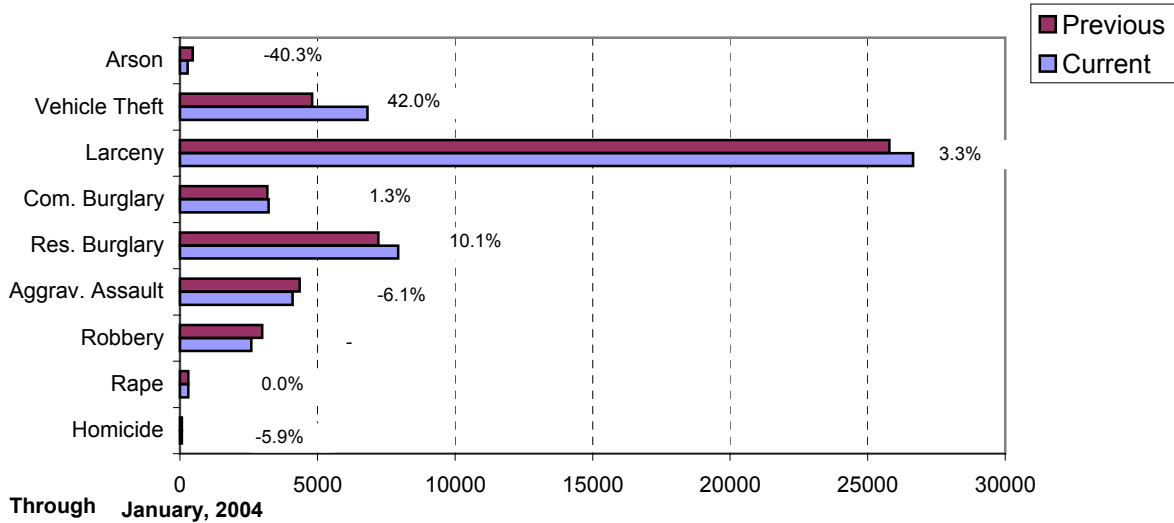


Index Offenses Year-to-Date Cumulative Totals Charlotte-Mecklenburg Police Department: 2002-2003

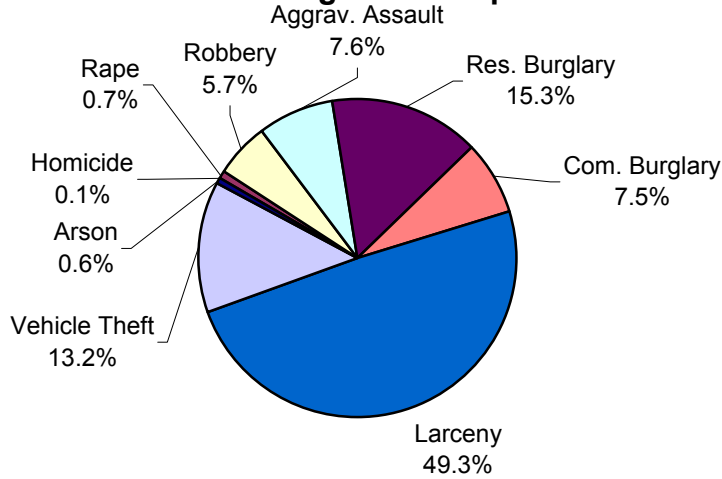


Through January, 2004

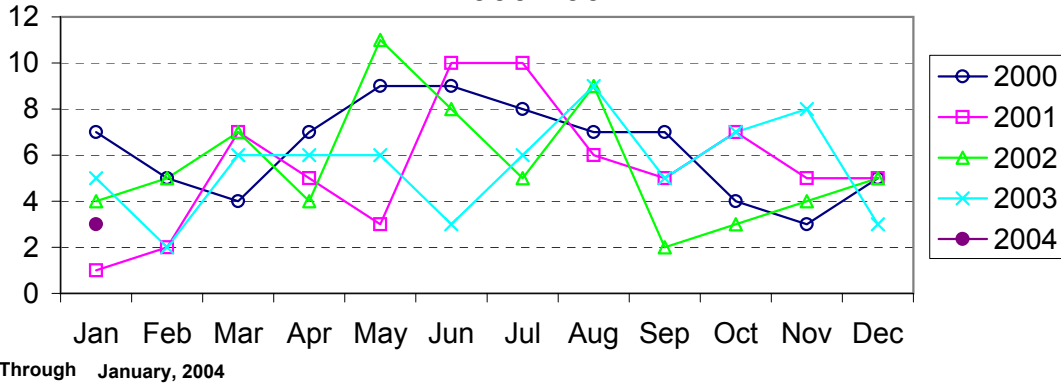
**Index Offenses in Current and Previous 12 Months
Charlotte-Mecklenburg Police Department:
2003-2004**



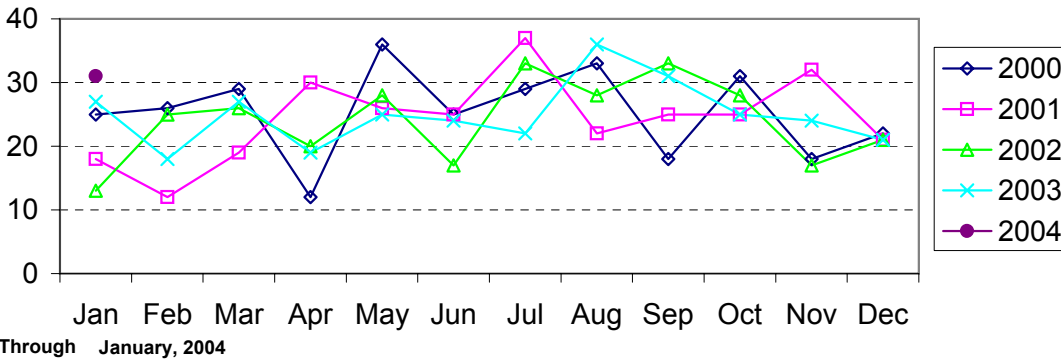
**Year-to-Date Index Offenses by Type
Charlotte-Mecklenburg Police Department: 2004**



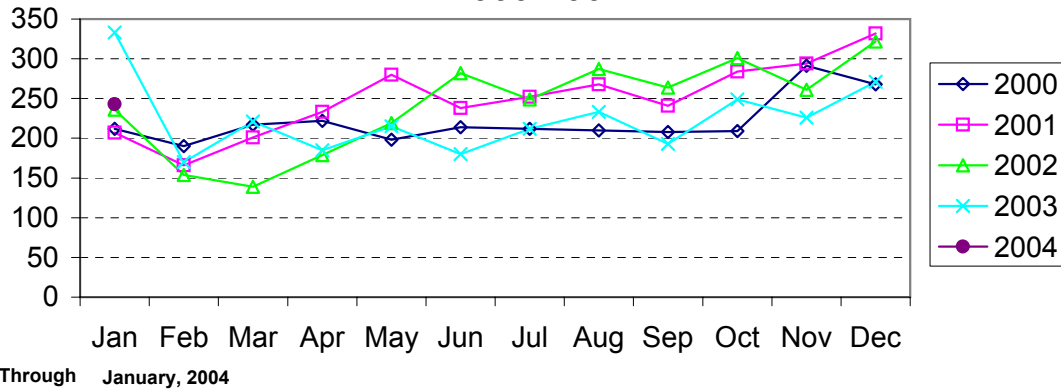
Homicide Reported by Month Charlotte-Mecklenburg Police Department: 2000-2004



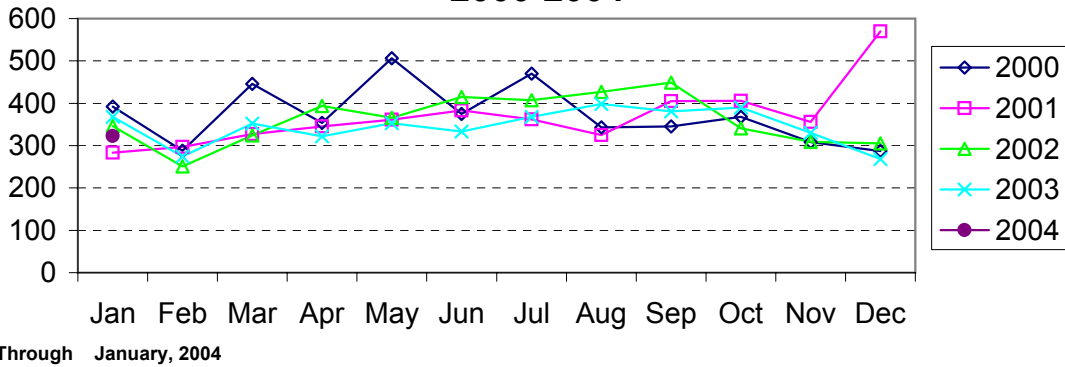
Rape Reported by Month Charlotte-Mecklenburg Police Department: 2000-2004



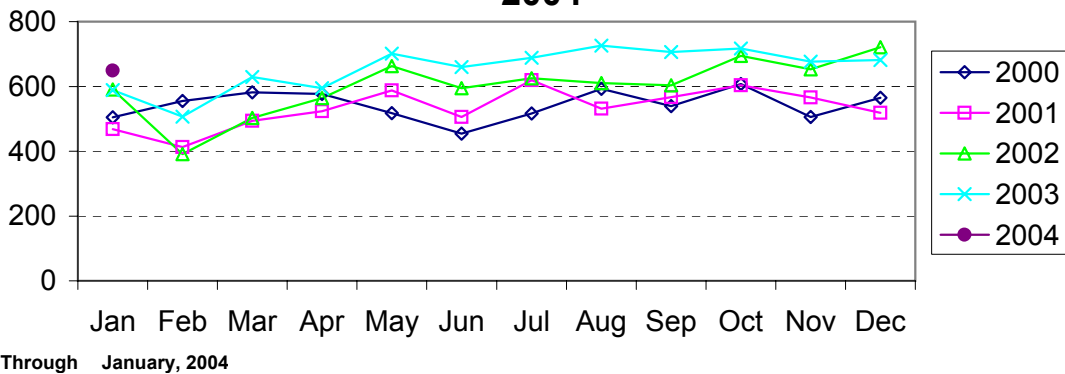
Robbery Reported by Month Charlotte-Mecklenburg Police Department: 2000-2004



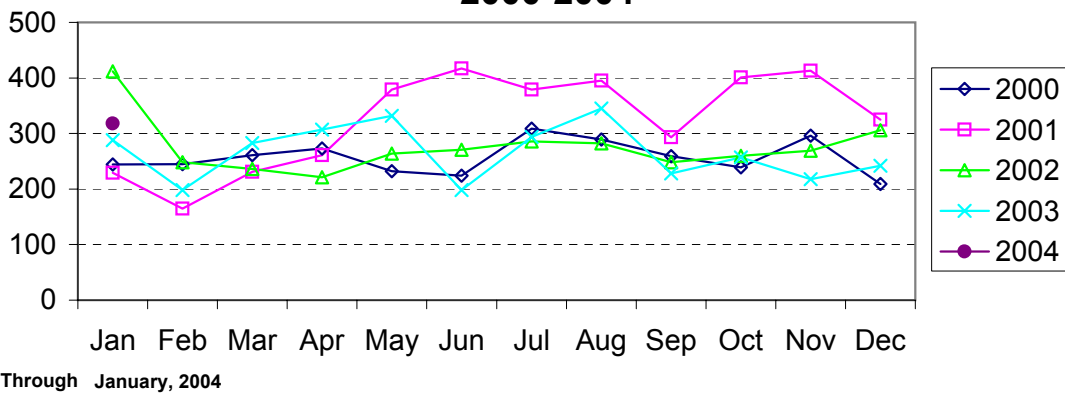
**Aggravated Assault Reported by Month
Charlotte-Mecklenburg Police Department:
2000-2004**



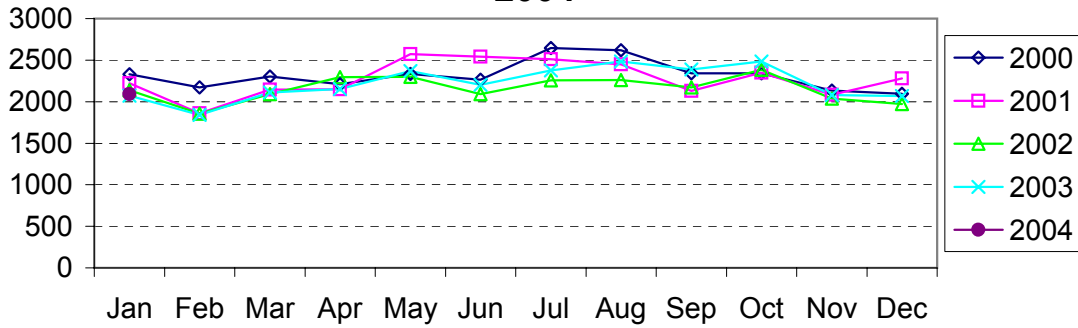
**Residential Burglary Reported by Month
Charlotte-Mecklenburg Police Department: 2000-
2004**



**Commercial Burglary Reported by Month
Charlotte-Mecklenburg Police Department:
2000-2004**

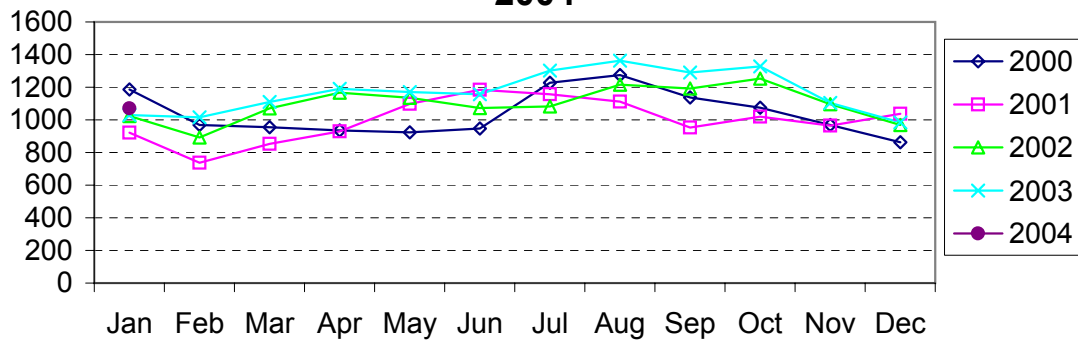


Larceny Reported by Month Charlotte-Mecklenburg Police Department: 2000-2004



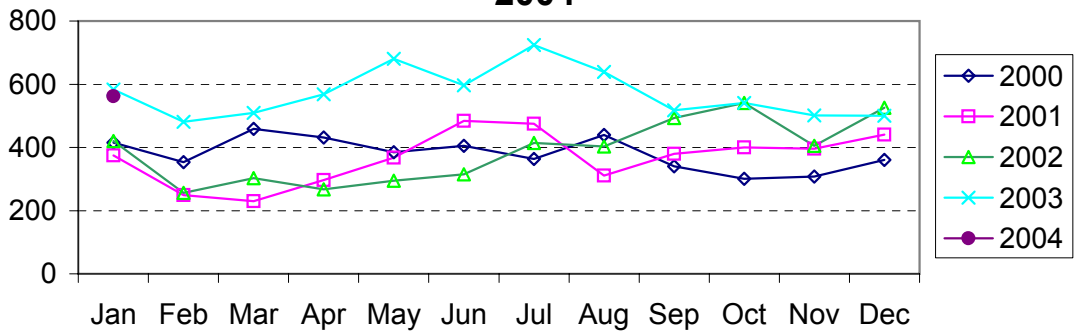
Through January, 2004

Larceny from Vehicle Reported by Month Charlotte-Mecklenburg Police Department: 2000-2004



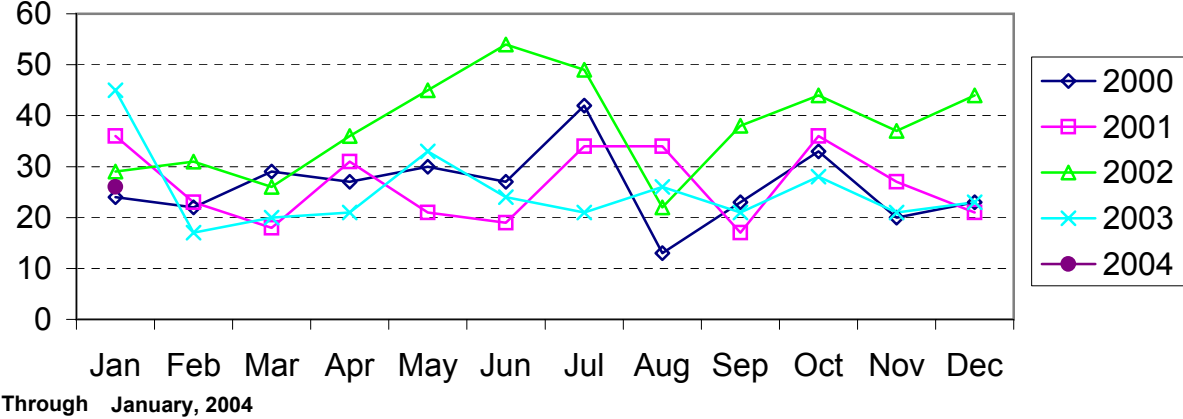
Through January, 2004

Vehicle Theft Reported by Month Charlotte-Mecklenburg Police Department: 2000-2004



Through January, 2004

Arson Reported by Month Charlotte-Mecklenburg Police Department: 2000-2004



Index Offenses Reported by Division and Service Area of Occurrence									
West Service Area: Jan, 2003-2004									
INDEX_CATEGORIES	Westover (A2)			Freedom (A3)			West Service Area		
	2003	2004	% Change	2003	2004	% Change	2003	2004	% Change
MURDER & NON-NEGLIGENT MANSLAUGHTER	1	0	-100.0%	0	0	NA	1	0	-100.0%
RAPE	1	2	100.0%	2	0	-100.0%	3	2	-33.3%
ACTUAL	1	2	100.0%	2	0	-100.0%	3	2	-33.3%
ATTEMPTED	0	0	NA	0	0	NA	0	0	NA
ROBBERY	35	23	-34.3%	27	29	7.4%	62	52	-16.1%
ARMED	29	20	-31.0%	17	24	41.2%	46	44	-4.3%
STRONG-ARM	6	3	-50.0%	10	5	-50.0%	16	8	-50.0%
AGGRAVATED ASSAULT	35	21	-40.0%	48	18	-62.5%	83	39	-53.0%
BURGLARY	75	69	-8.0%	116	97	-16.4%	191	166	-13.1%
RESIDENTIAL	57	42	-26.3%	65	71	9.2%	122	113	-7.4%
COMMERCIAL	18	27	50.0%	51	26	-49.0%	69	53	-23.2%
LARCENY	96	123	28.1%	178	196	10.1%	274	319	16.4%
FROM AUTO	45	56	24.4%	76	93	22.4%	121	149	23.1%
BICYCLE	0	1	NA	0	0	NA	0	1	NA
SHOPLIFTING	7	21	200.0%	11	33	200.0%	18	54	200.0%
OTHERS	44	45	2.3%	91	70	-23.1%	135	115	-14.8%
VEHICLE THEFT	31	34	9.7%	67	60	-10.4%	98	94	-4.1%
ARSON	5	5	0.0%	6	2	-66.7%	11	7	-36.4%
TOTALS	279	277	-0.7%	444	402	-9.5%	723	679	-6.1%
VIOLENT	72	46	-36.1%	77	47	-39.0%	149	93	-37.6%
PROPERTY	207	231	11.6%	367	355	-3.3%	574	586	2.1%

Index Offenses Reported by Division and Service Area of Occurrence									
Southeast Service Area: Jan, 2003-2004									
INDEX_CATEGORIES	Providence (B1)			Independence (B3)			Southeast Service Area		
	2003	2004	% Change	2003	2004	% Change	2003	2004	% Change
MURDER & NON-NEGLIGENT MANSLAUGHTER	0	0	NA	0	0	NA	0	0	NA
RAPE	4	2	-50.0%	3	2	-33.3%	7	4	-42.9%
ACTUAL	3	2	-33.3%	3	2	-33.3%	6	4	-33.3%
ATTEMPTED	1	0	-100.0%	0	0	NA	1	0	-100.0%
ROBBERY	15	11	-26.7%	41	21	-48.8%	56	32	-42.9%
ARMED	12	10	-16.7%	37	16	-56.8%	49	26	-46.9%
STRONG-ARM	3	1	-66.7%	4	5	25.0%	7	6	-14.3%
AGGRAVATED ASSAULT	21	21	0.0%	25	21	-16.0%	46	42	-8.7%
BURGLARY	59	90	52.5%	85	103	21.2%	144	193	34.0%
RESIDENTIAL	26	46	76.9%	68	63	-7.4%	94	109	16.0%
COMMERCIAL	33	44	33.3%	17	40	135.3%	50	84	68.0%
LARCENY	116	142	22.4%	221	181	-18.1%	337	323	-4.2%
FROM AUTO	42	66	57.1%	121	120	-0.8%	163	186	14.1%
BICYCLE	1	1	0.0%	2	1	-50.0%	3	2	-33.3%
SHOPLIFTING	21	14	-33.3%	22	16	-27.3%	43	30	-30.2%
OTHERS	52	61	17.3%	76	44	-42.1%	128	105	-18.0%
VEHICLE THEFT	30	30	0.0%	60	53	-11.7%	90	83	-7.8%
ARSON	1	1	0.0%	4	4	0.0%	5	5	0.0%
TOTALS	246	297	20.7%	439	385	-12.3%	685	682	-0.4%
VIOLENT	40	34	-15.0%	69	44	-36.2%	109	78	-28.4%
PROPERTY	206	263	27.7%	370	341	-7.8%	576	604	4.9%

The data in the district breakdowns does not include a small number of offenses in which the location of the offense was unknown or was entered without a valid tract assignment. Districts are not equal in geographic size, demographics, zoning/development, and other factors that influence the rate of crimes committed in an area. Therefore, the comparison of raw offense totals across districts is not advisable.

Index Offenses Reported by Division and Service Area of Occurrence									
Northeast Service Area: Jan, 2003-2004									
INDEX_CATEGORIES	North (C1)			Hickory Grove (C3)			Northeast Service Area		
	2003	2004	% Change	2003	2004	% Change	2003	2004	% Change
MURDER & NON-NEGLIGENT MANSLAUGHTER	1	0	-100.0%	1	0	-100.0%	2	0	-100.0%
RAPE	2	8	300.0%	6	2	-66.7%	8	10	25.0%
ACTUAL	2	7	250.0%	6	2	-66.7%	8	9	12.5%
ATTEMPTED	0	1	NA	0	0	NA	0	1	NA
ROBBERY	21	18	-14.3%	32	24	-25.0%	53	42	-20.8%
ARMED	16	14	-12.5%	28	20	-28.6%	44	34	-22.7%
STRONG-ARM	5	4	-20.0%	4	4	0.0%	9	8	-11.1%
AGGRAVATED ASSAULT	24	38	58.3%	40	37	-7.5%	64	75	17.2%
BURGLARY	101	103	2.0%	69	87	26.1%	170	190	11.8%
RESIDENTIAL	65	82	26.2%	59	62	5.1%	124	144	16.1%
COMMERCIAL	36	21	-41.7%	10	25	150.0%	46	46	0.0%
LARCENY	291	332	14.1%	184	142	-22.8%	475	474	-0.2%
FROM AUTO	167	189	13.2%	104	77	-26.0%	271	266	-1.8%
BICYCLE	1	4	300.0%	1	4	300.0%	2	8	300.0%
SHOPLIFTING	25	29	16.0%	18	8	-55.6%	43	37	-14.0%
OTHERS	98	110	12.2%	61	53	-13.1%	159	163	2.5%
VEHICLE THEFT	52	65	25.0%	87	58	-33.3%	139	123	-11.5%
ARSON	6	1	-83.3%	8	1	-87.5%	14	2	-85.7%
TOTALS	498	565	13.5%	427	351	-17.8%	925	916	-1.0%
VIOLENT	48	64	33.3%	79	63	-20.3%	127	127	0.0%
PROPERTY	450	501	11.3%	348	288	-17.2%	798	789	-1.1%

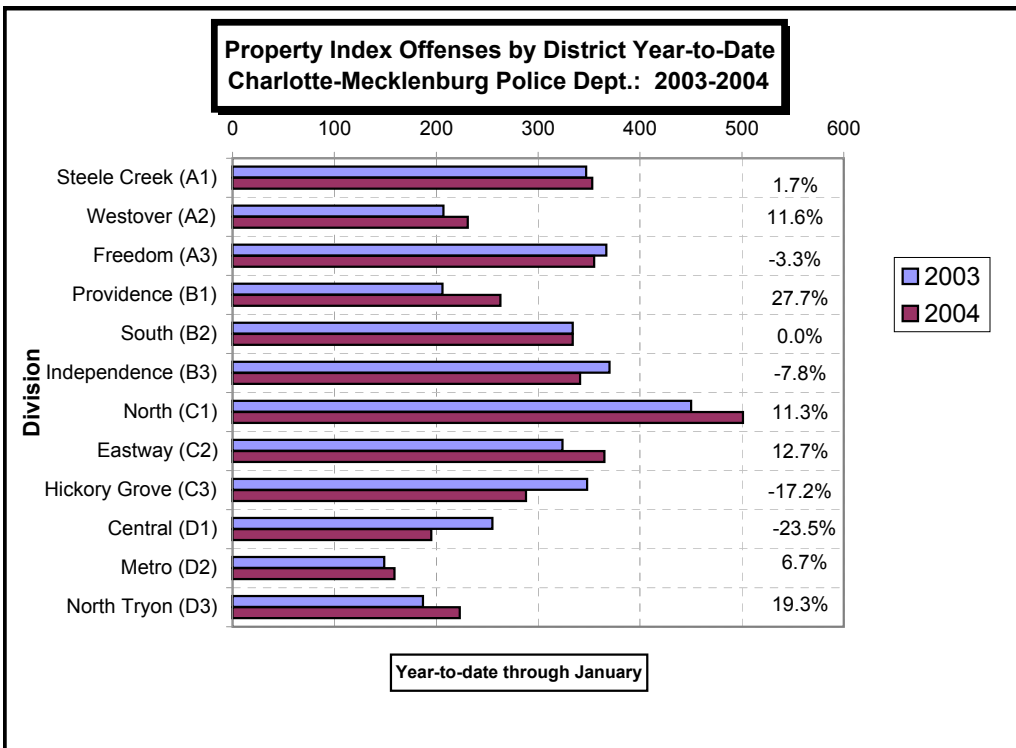
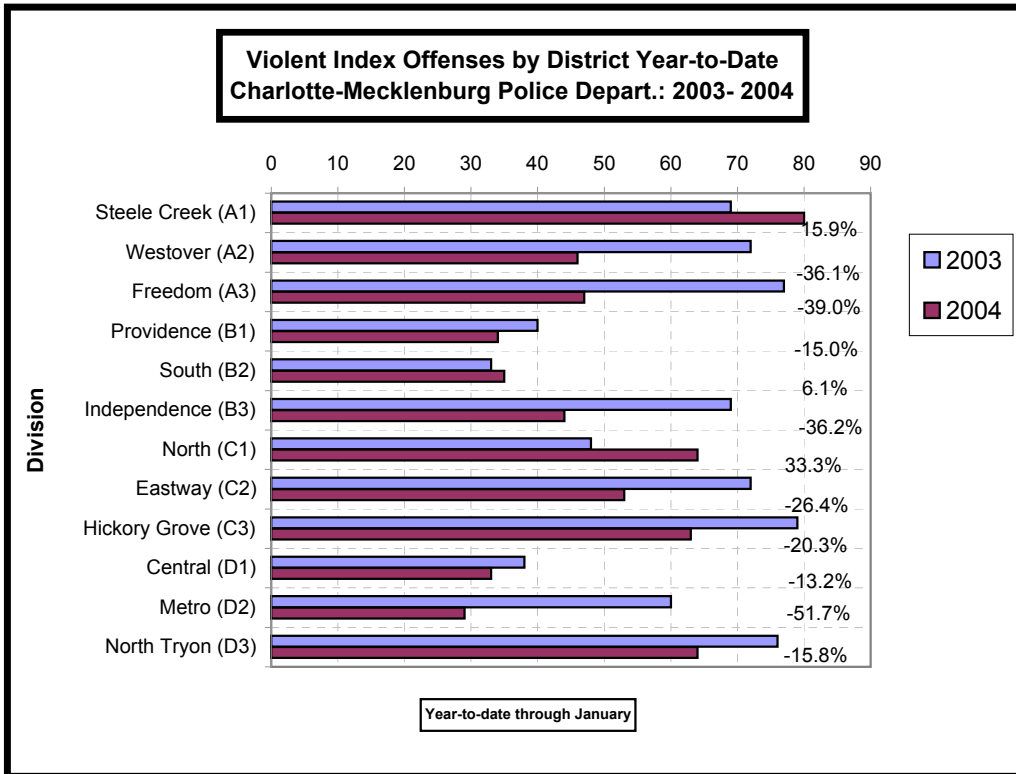
Index Offenses Reported by Division and Service Area of Occurrence									
Central Service Area: Jan, 2003-2004									
INDEX_CATEGORIES	Central (D1)			Metro (D2)			Central Service Area		
	2003	2004	% Change	2003	2004	% Change	2003	2004	% Change
MURDER & NON-NEGLIGENT MANSLAUGHTER	1	0	-100.0%	1	0	-100.0%	2	0	-100.0%
RAPE	3	4	33.3%	3	3	0.0%	6	7	16.7%
ACTUAL	3	4	33.3%	3	3	0.0%	6	7	16.7%
ATTEMPTED	0	0	NA	0	0	NA	0	0	NA
ROBBERY	12	13	8.3%	24	11	-54.2%	36	24	-33.3%
ARMED	7	9	28.6%	16	9	-43.8%	23	18	-21.7%
STRONG-ARM	5	4	-20.0%	8	2	-75.0%	13	6	-53.8%
AGGRAVATED ASSAULT	22	16	-27.3%	32	15	-53.1%	54	31	-42.6%
BURGLARY	43	35	-18.6%	44	50	13.6%	87	85	-2.3%
RESIDENTIAL	18	18	0.0%	26	40	53.8%	44	58	31.8%
COMMERCIAL	25	17	-32.0%	18	10	-44.4%	43	27	-37.2%
LARCENY	167	135	-19.2%	69	79	14.5%	236	214	-9.3%
FROM AUTO	72	56	-22.2%	40	36	-10.0%	112	92	-17.9%
BICYCLE	0	2	NA	0	1	NA	0	3	NA
SHOPLIFTING	5	2	-60.0%	1	9	800.0%	6	11	83.3%
OTHERS	90	75	-16.7%	28	33	17.9%	118	108	-8.5%
VEHICLE THEFT	44	25	-43.2%	35	30	-14.3%	79	55	-30.4%
ARSON	1	0	-100.0%	1	0	-100.0%	2	0	-100.0%
TOTALS	293	228	-22.2%	209	188	-10.0%	502	416	-17.1%
VIOLENT	38	33	-13.2%	60	29	-51.7%	98	62	-36.7%
PROPERTY	255	195	-23.5%	149	159	6.7%	404	354	-12.4%

The data in the district breakdowns does not include a small number of offenses in which the location of the offense was unknown or was entered without a valid tract assignment. Districts are not equal in geographic size, demographics, zoning/development, and other factors that influence the rate of crimes committed in an area. Therefore, the comparison of raw offense totals across districts is not advisable.

Index Offenses Reported by Division and Service Area of Occurrence									
East Service Area: Jan, 2003-2004									
INDEX_CATEGORIES	Eastway (C2)			North Tryon (D3)			East Service Area		
	2003	2004	% Change	2003	2004	% Change	2003	2004	% Change
MURDER & NON-NEGLIGENT MANSLAUGHTER	0	0	NA	0	0	NA	0	0	NA
RAPE	0	0	NA	2	2	0.0%	2	2	0.0%
ACTUAL	0	0	NA	2	2	0.0%	2	2	0.0%
ATTEMPTED	0	0	NA	0	0	NA	0	0	NA
ROBBERY	39	24	-38.5%	38	26	-31.6%	77	50	-35.1%
ARMED	35	15	-57.1%	32	22	-31.3%	67	37	-44.8%
STRONG-ARM	4	9	125.0%	6	4	-33.3%	10	13	30.0%
AGGRAVATED ASSAULT	33	29	-12.1%	36	36	0.0%	69	65	-5.8%
BURGLARY	80	110	37.5%	54	67	24.1%	134	177	32.1%
RESIDENTIAL	62	57	-8.1%	39	52	33.3%	101	109	7.9%
COMMERCIAL	18	53	194.4%	15	15	0.0%	33	68	106.1%
LARCENY	195	193	-1.0%	80	109	36.3%	275	302	9.8%
FROM AUTO	83	89	7.2%	46	52	13.0%	129	141	9.3%
BICYCLE	3	1	-66.7%	0	2	NA	3	3	0.0%
SHOPLIFTING	41	44	7.3%	2	13	550.0%	43	57	32.6%
OTHERS	68	59	-13.2%	32	42	31.3%	100	101	1.0%
VEHICLE THEFT	46	60	30.4%	51	45	-11.8%	97	105	8.2%
ARSON	3	2	-33.3%	2	2	0.0%	5	4	-20.0%
TOTALS	396	418	5.6%	263	287	9.1%	659	705	7.0%
VIOLENT	72	53	-26.4%	76	64	-15.8%	148	117	-20.9%
PROPERTY	324	365	12.7%	187	223	19.3%	511	588	15.1%

Index Offenses Reported by Division and Service Area of Occurrence									
South Service Area: Jan, 2003-2004									
INDEX_CATEGORIES	Steele Creek (A1)			South (B2)			South Service Area		
	2003	2004	% Change	2003	2004	% Change	2003	2004	% Change
MURDER & NON-NEGLIGENT MANSLAUGHTER	0	3	NA	0	0	NA	0	3	NA
RAPE	1	3	200.0%	0	2	NA	1	5	400.0%
ACTUAL	1	2	100.0%	0	2	NA	1	4	300.0%
ATTEMPTED	0	1	NA	0	0	NA	0	1	NA
ROBBERY	31	22	-29.0%	18	18	0.0%	49	40	-18.4%
ARMED	27	16	-40.7%	12	13	8.3%	39	29	-25.6%
STRONG-ARM	4	6	50.0%	6	5	-16.7%	10	11	10.0%
AGGRAVATED ASSAULT	37	52	40.5%	15	15	0.0%	52	67	28.8%
BURGLARY	60	72	20.0%	82	75	-8.5%	142	147	3.5%
RESIDENTIAL	38	56	47.4%	61	58	-4.9%	99	114	15.2%
COMMERCIAL	22	16	-27.3%	21	17	-19.0%	43	33	-23.3%
LARCENY	236	222	-5.9%	224	214	-4.5%	460	436	-5.2%
FROM AUTO	102	103	1.0%	127	120	-5.5%	229	223	-2.6%
BICYCLE	1	1	0.0%	0	0	NA	1	1	0.0%
SHOPLIFTING	40	42	5.0%	14	14	0.0%	54	56	3.7%
OTHERS	93	76	-18.3%	83	80	-3.6%	176	156	-11.4%
VEHICLE THEFT	48	56	16.7%	25	41	64.0%	73	97	32.9%
ARSON	3	3	0.0%	3	4	33.3%	6	7	16.7%
TOTALS	416	433	4.1%	367	369	0.5%	783	802	2.4%
VIOLENT	69	80	15.9%	33	35	6.1%	102	115	12.7%
PROPERTY	347	353	1.7%	334	334	0.0%	681	687	0.9%

The data in the district breakdowns does not include a small number of offenses in which the location of the offense was unknown or was entered without a valid tract assignment. Districts are not equal in geographic size, demographics, zoning/development, and other factors that influence the rate of crimes committed in an area. Therefore, the comparison of raw offense totals across districts is not advisable.



The data in the district breakdowns does not include a small number of offenses in which the location of the offense was unknown or was entered without a valid tract assignment. Districts are not equal in geographic size, demographics, zoning/development, and other factors that influence the rate of crimes committed in an area. Therefore, the comparison of raw offense totals across districts is not advisable.

Arrests by Charlotte-Mecklenburg Police Department
Year-To-Date: 2003-2004
(Through January)

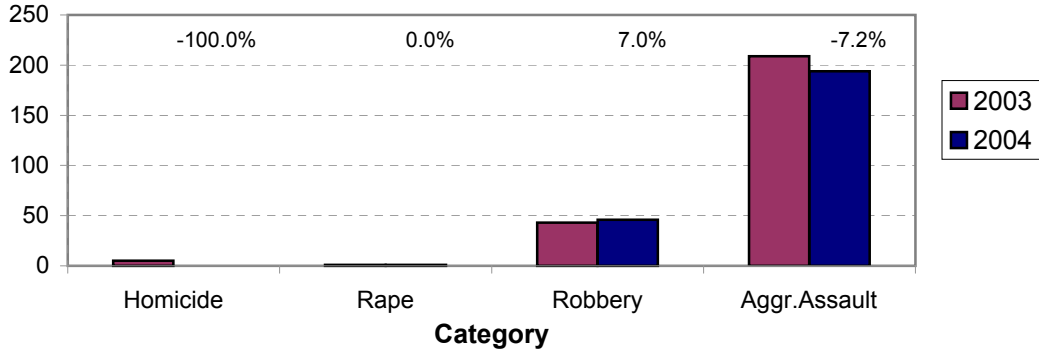
CATEGORY	ADULTS (AGE 18 & OLDER):			JUVENILES (UNDER 18):			TOTAL ARRESTS:		
	2003 Y-T-D	2004 Y-T-D	% CHANGE	2003 Y-T-D	2004 Y-T-D	% CHANGE	2003 Y-T-D	2004 Y-T-D	% CHANGE
Murder/Non-Negligent Manslaughter	5	0	-100.0%	0	0	NA	5	0	-100.0%
Negligent & Vehicular Manslaughter	0	2	NA	0	0	NA	0	2	NA
Rape	1	1	0.0%	0	0	NA	1	1	0.0%
Robbery	33	24	-27.3%	10	22	120.0%	43	46	7.0%
Aggravated Assault	188	168	-10.6%	21	26	23.8%	209	194	-7.2%
Burglary	37	48	29.7%	19	14	-26.3%	56	62	10.7%
Larceny	119	124	4.2%	55	52	-5.5%	174	176	1.1%
Vehicle Theft	11	12	9.1%	49	21	-57.1%	60	33	-45.0%
Non-Aggravated Assault	150	129	-14.0%	71	68	-4.2%	221	197	-10.9%
Arson	2	1	-50.0%	6	3	-50.0%	8	4	-50.0%
Forgery/Counterfiet	7	9	28.6%	0	1	NA	7	10	42.9%
Fraud	41	60	46.3%	1	0	-100.0%	42	60	42.9%
Embezzlement	12	8	-33.3%	1	1	0.0%	13	9	-30.8%
Stolen Property	45	47	4.4%	20	6	-70.0%	65	53	-18.5%
Vandalism	19	16	-15.8%	20	11	-45.0%	39	27	-30.8%
Weapons	42	36	-14.3%	4	7	75.0%	46	43	-6.5%
Prostitution	9	21	133.3%	0	3	NA	9	24	166.7%
Sex Offenses	10	13	30.0%	3	0	-100.0%	13	13	0.0%
Drugs	256	201	-21.5%	28	24	-14.3%	284	225	-20.8%
Gambling	2	1	-50.0%	0	0	NA	2	1	-50.0%
Offenses vs. Family	0	0	NA	0	0	NA	0	0	NA
DUI	156	158	1.3%	1	1	0.0%	157	159	1.3%
Liquor	5	11	120.0%	2	0	-100.0%	7	11	57.1%
Disorder Conduct	32	57	78.1%	19	32	68.4%	51	89	74.5%
Other Non-Traffic	530	653	23.2%	62	53	-14.5%	592	706	19.3%
VIOLENT INDEX¹	227	193	-15.0%	31	48	54.8%	258	241	-6.6%
PROPERTY INDEX²	169	185	9.5%	129	90	-30.2%	298	275	-7.7%
INDEX SUBTOTAL	396	378	-4.5%	160	138	-13.8%	556	516	-7.2%
PART 2 SUBTOTAL³	1316	1422	8.1%	232	207	-10.8%	1548	1629	5.2%
TOTAL	1712	1800	5.1%	392	345	-12.0%	2104	2145	1.9%

¹Violent Index includes murder and non-negligent manslaughter, rape, robbery, and aggravated assault.

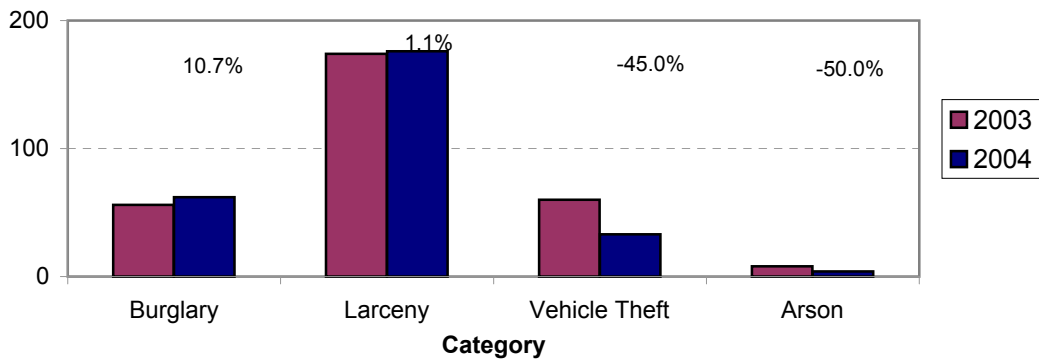
²Property Index includes burglary, larceny, vehicle theft, and arson.

³Part 2 crimes include non-traffic crimes not counted in the Index totals.

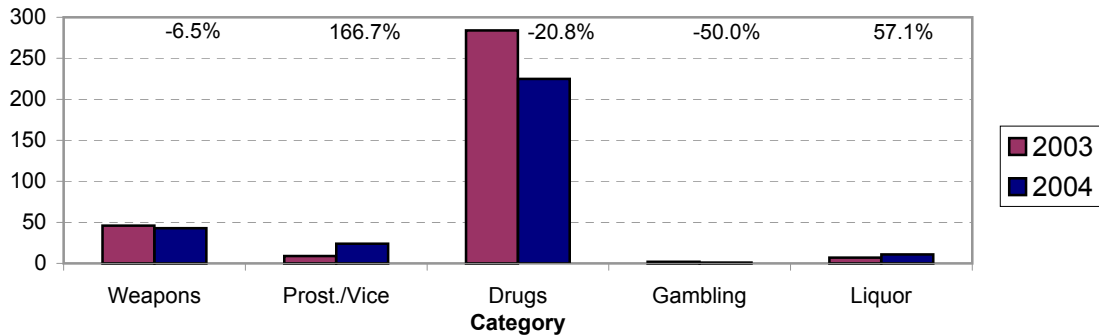
**Violent Index Arrests Year-to-Date
Charlotte-Mecklenburg Police Department: 2003-2004
(Through January)**



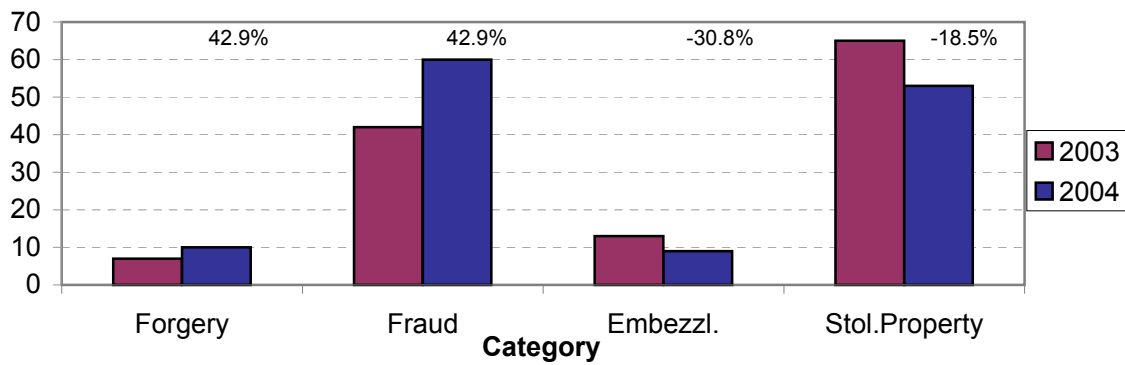
**Property Index Arrests Year-to-Date
Charlotte-Mecklenburg Police Department: 2003-2004
(Through January)**



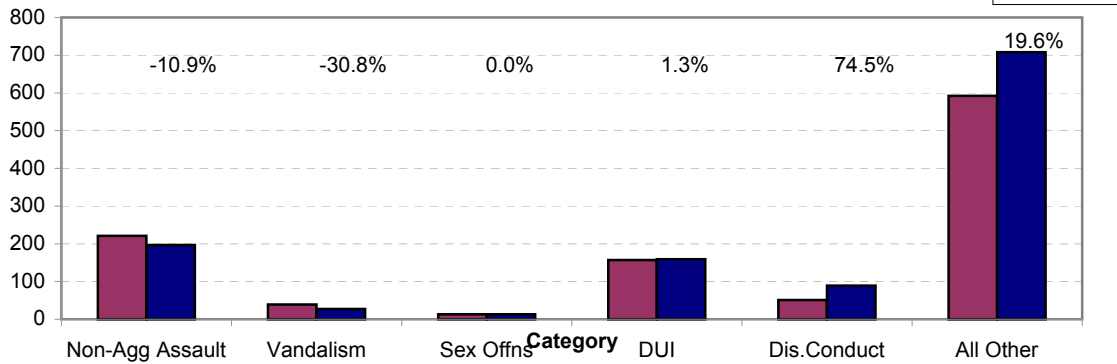
**Arrests for Vice/CCW/Drugs/Etc. Year-to-Date
Charlotte-Mecklenburg Police Department: 2003 - 2004
(Through January)**



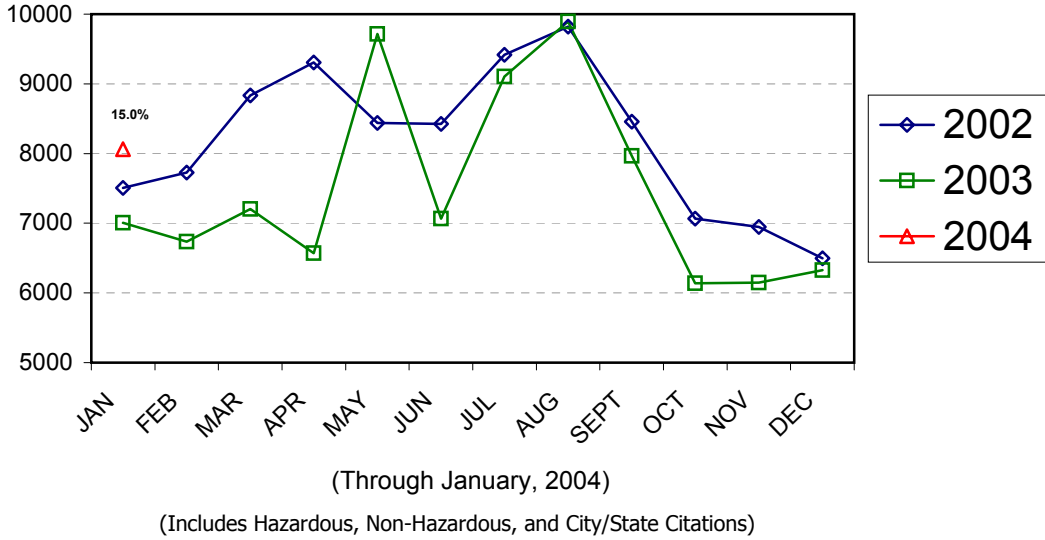
**Arrests for Property/White Collar Crime Year-to-Date
Charlotte-Mecklenburg Police Department: 2003 - 2004
(Through January)**



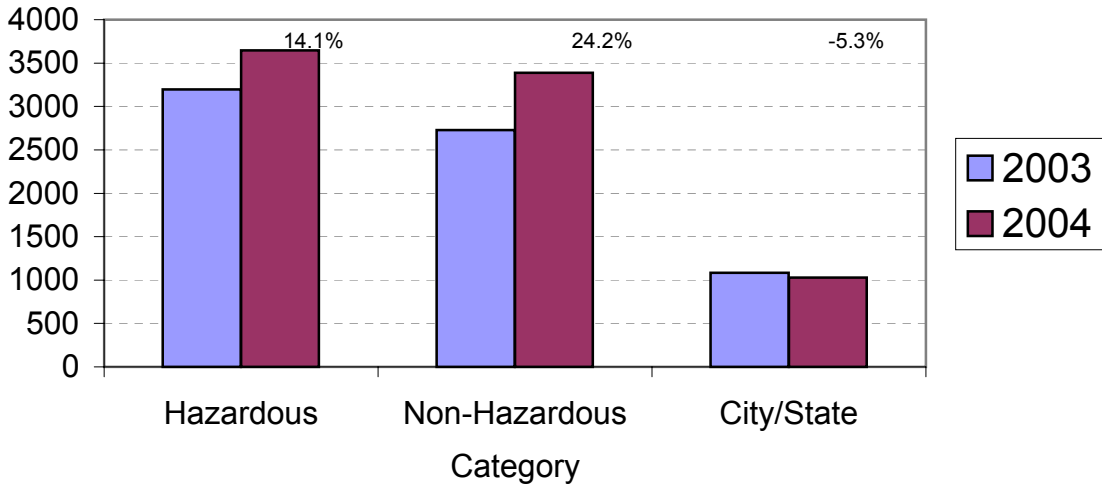
**Arrests for Other Categories Year-to-Date
Charlotte-Mecklenburg Police Department: 2003 - 2004
(Through January)**



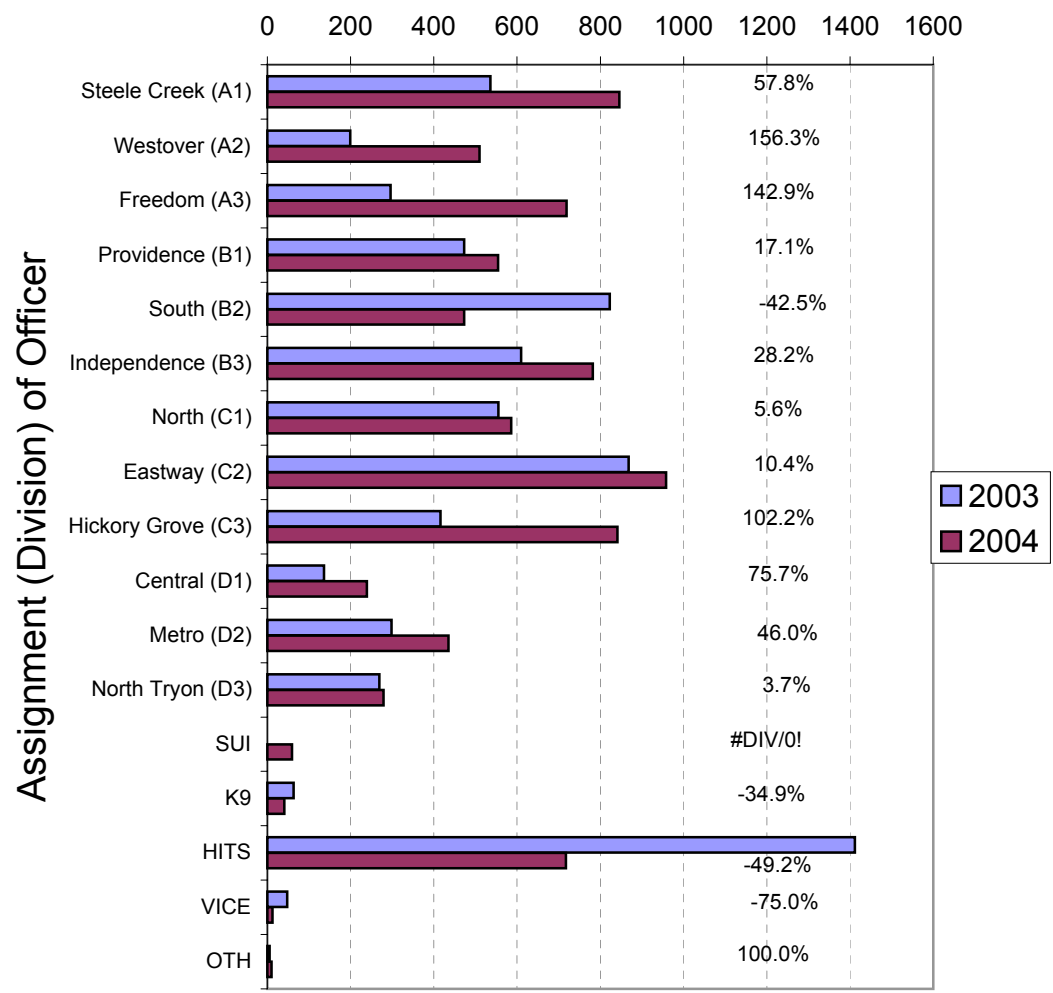
**Total Citation Enforcement by Month
Charlotte-Mecklenburg Police Dept.: 2002-2004**



**CMPD Citation Enforcement by Category
Year-to-Date, 2003 - 2004
(Through January, 2004)**



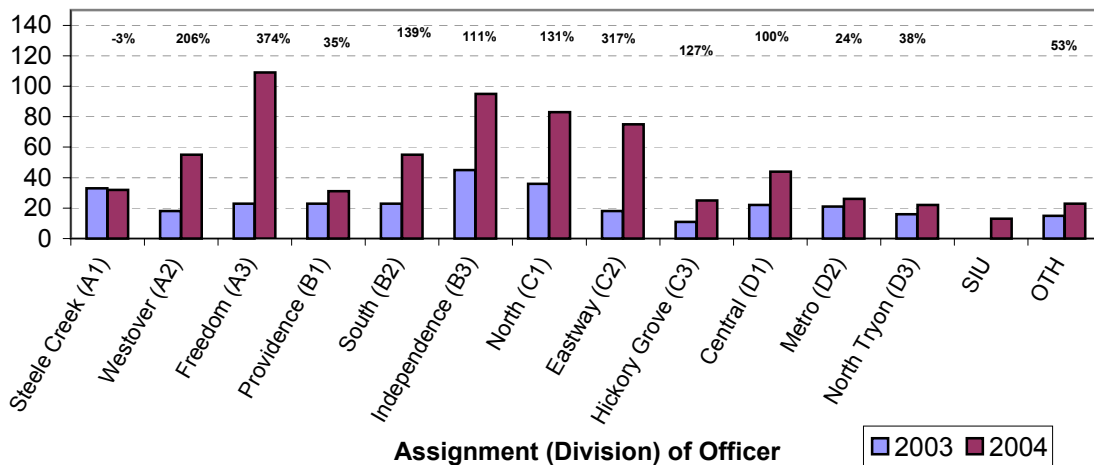
**Citations Issued Year-to-Date by CMPD Divisions
2003 - 2004
(Through January, 2004)**



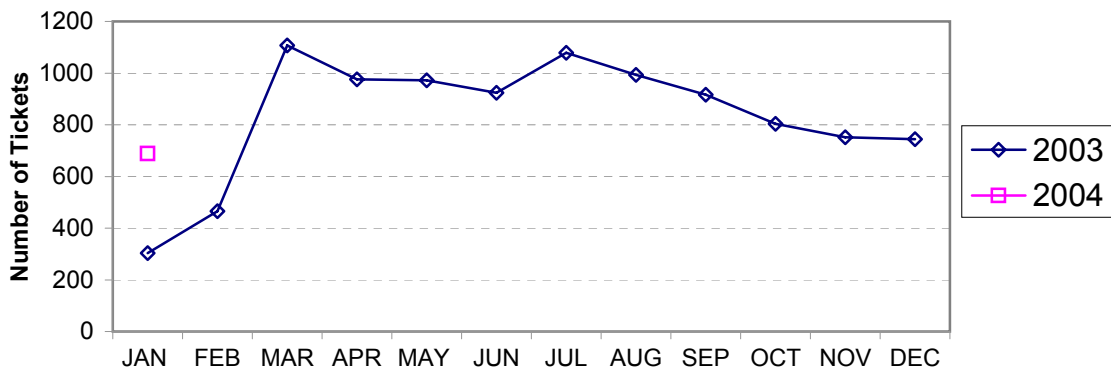
**Citations Issued by the Charlotte Mecklenburg Police Dept. Year-to-Date
(Through January, 2004)**

	2003	2004	% Change
Total Citations			
Hazardous	3,196	3,646	14.1%
Non-Hazardous	2,727	3,388	24.2%
Other City/State Statute/Ordinance	1,084	1,027	-5.3%
Total	7,007	8,061	15.0%

**Warning Tickets Issued by CMPD Division
Year-to-Date, 2003 - 2004
Through January, 2004**



**Total Warning Tickets Issued by CMPD
By Month: 2003 - 2004**



**Warning Tickets Issued by CMPD Year-to-Date
Through January, 2004**

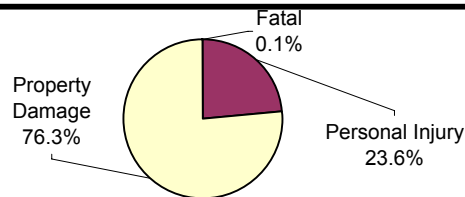
	2003	2004	% Change
Total Warning Tickets	304	688	126.3%

Traffic Collison Reports
Charlotte-Mecklenburg Police Department
Year-to-Date: 2003-2004
(Through January)

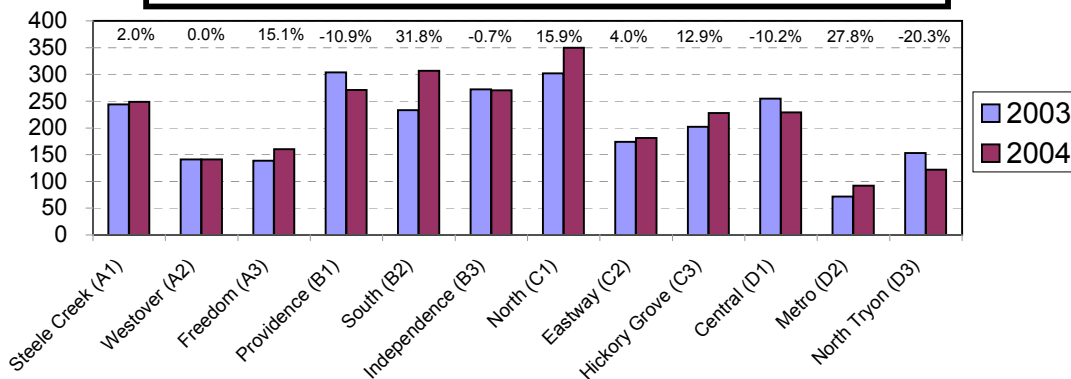
<u>Type</u>	<u>2003</u>	<u>2004</u>	<u>% Change</u>
Fatal Collisions	2	3	50.0%
Vehicle Occupants Killed	3	3	0.0%
Pedestrians Killed	0	0	NA
Personal Injury Collisions	533	615	15.5%
Property Damage Collisions	1988	1996	0.4%
Total Collisions	2523	2614	3.6%

* The number of fatal collisions and the number of persons killed in those incidents is taken from the HITS file. Their records are updated for deaths that occur after the initial report is filed.

Traffic Collisions Reported by Type
Charlotte-Mecklenburg Police Department:
2004 Year-to-Date
(Through January)



Traffic Collisions Reported by Charlotte-Mecklenburg Police Dept.
Year-to-Date By Location (Division) : 2003 -2004
(Through January)



Uniform Crime Reporting Procedures:

The Charlotte-Mecklenburg Police Department reports offense and arrest statistics in accordance with standard Uniform Crime Reporting (UCR) guidelines. UCR policy states that any adjustments to previous months can be made on the current month's report:

...In tabulating crime counts, an agency may find that offense totals for past months require adjustments due to developments in the investigation or other handling of the matter. It may be necessary to adjust totals reported to UCR for the past month or prior months. Needed adjustments can be made on the current month's report and do not affect the reliability of the figures in that such adjustments tend to equalize each other from month to month over a period of time.

- *Uniform Crime Reporting Handbook*, FBI, 1984, p. 42-43

We are required to report crime monthly to the UCR program, and we do therefore make an effort to process monthly changes in a timely manner. However, occasionally due to the review and processing required for reclassifying, unfounding or clearing cases, the current month's totals may reflect the processing of a backlog of these changes from previous months.

Users of the data are cautioned that conclusions about substantial changes in crime trends or in clearance rates based on only a single month's data or trend may reflect some of these adjustments. For this reason, in addition to the monthly and year-to-date trends on Page 1, the monthly report routinely includes a comparison for the previous 12 months (p. 4), as well as graphs that provide seasonal/monthly comparisons over a five-year period (p. 5-8).

We do make an effort to present the most accurate information available at the time this report is published. However, errors in compiling the data and charts do sometimes occur, so please notify the Research, Planning, and Analysis office if you have any questions about the data in this report.

The new division names are used in this report. For ease of use, they also include the old district designations in parentheses.

V. L. Sorban
Research, Planning & Analysis Bureau