



**CHARLOTTE-MECKLENBURG POLICE DEPARTMENT
MONTHLY SUMMARY REPORT
FEBRUARY, 2004**

**Darrel Stephens
Chief of Police**

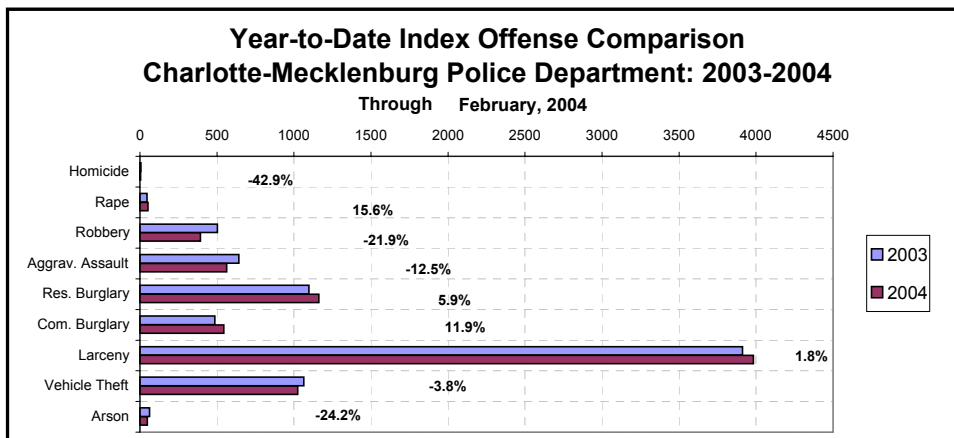
INDEX OFFENSES REPORTED TO CHARLOTTE-MECKLENBURG POLICE DEPARTMENT

February, 2004 INDEX OFFENSES	# THIS MONTH	% OF ALL INDEX	# LAST MONTH	MONTHLY % CHANGE	SAME MONTH LAST YEAR	MONTHLY % CHANGE	THIS YEAR TO DATE	LAST YEAR TO DATE	ANNUAL % CHANGE
HOMICIDE (MURDER & NON-NEGLIGENT MANSLAUGHTER)	1	0.0%	3	-66.7%	2	-50.0%	4	7	-42.9%
RAPE TOTAL	21	0.6%	31	-32.3%	18	16.7%	52	45	15.6%
ACTUAL	19	0.5%	29	-34.5%	16	18.8%	48	42	14.3%
ATTEMPT	2	0.1%	2	0.0%	2	0.0%	4	3	33.3%
ROBBERY TOTAL	150	4.3%	243	-38.3%	170	-11.8%	393	503	-21.9%
ARMED	111	3.2%	190	-41.6%	119	-6.7%	301	387	-22.2%
STRONG-ARM	39	1.1%	53	-26.4%	51	-23.5%	92	116	-20.7%
AGGRAVATED ASSAULT TOTAL	239	6.8%	323	-26.0%	274	-12.8%	562	642	-12.5%
BURGLARY TOTAL	738	20.9%	967	-23.7%	705	4.7%	1705	1582	7.8%
RESIDENTIAL	512	14.5%	649	-21.1%	507	1.0%	1161	1096	5.9%
COMMERCIAL	226	6.4%	318	-28.9%	198	14.1%	544	486	11.9%

FORCE	556	15.8%	783	-29.0%	584	-4.8%	1339	1294	3.5%
NO FORCE	122	3.5%	123	-0.8%	81	50.6%	245	200	22.5%
ATTEMPT	60	1.7%	61	-1.6%	40	50.0%	121	88	37.5%
LARCENY TOTAL	1891	53.7%	2092	-9.6%	1841	2.7%	3983	3913	1.8%
\$200 AND OVER	923	26.2%	1011	-8.7%	943	-2.1%	1934	1972	-1.9%
\$50 TO \$200	343	9.7%	380	-9.7%	303	13.2%	723	670	7.9%
UNDER \$50	625	17.7%	701	-10.8%	595	5.0%	1326	1271	4.3%

FROM AUTO	982	27.9%	1070	-8.2%	1016	-3.3%	2052	2046	0.3%
BICYCLE	2	0.1%	18	-88.9%	2	0.0%	20	11	81.8%
SHOPLIFTING	181	5.1%	245	-26.1%	196	-7.7%	426	404	5.4%
OTHERS	726	20.6%	759	-4.3%	627	15.8%	1485	1452	2.3%
VEHICLE THEFT TOTAL	462	13.1%	562	-17.8%	481	-4.0%	1024	1064	-3.8%
ARSON TOTAL	21	0.6%	26	-19.2%	17	23.5%	47	62	-24.2%
TOTALS	3523	100.0%	4247	-17.0%	3508	0.4%	7770	7818	-0.6%
VIOLENT PROPERTY	411	11.7%	600	-31.5%	464	-11.4%	1011	1197	-15.5%
PROPERTY	3112	88.3%	3647	-14.7%	3044	2.2%	6759	6621	2.1%

NOTE: These totals include offenses reported to the Charlotte-Mecklenburg Police Department in accordance with the Uniform Crime Reporting Program. Totals for homicide do not include cases investigated by the police but classed by UCR guidelines as negligent manslaughter or as "justifiable homicide."



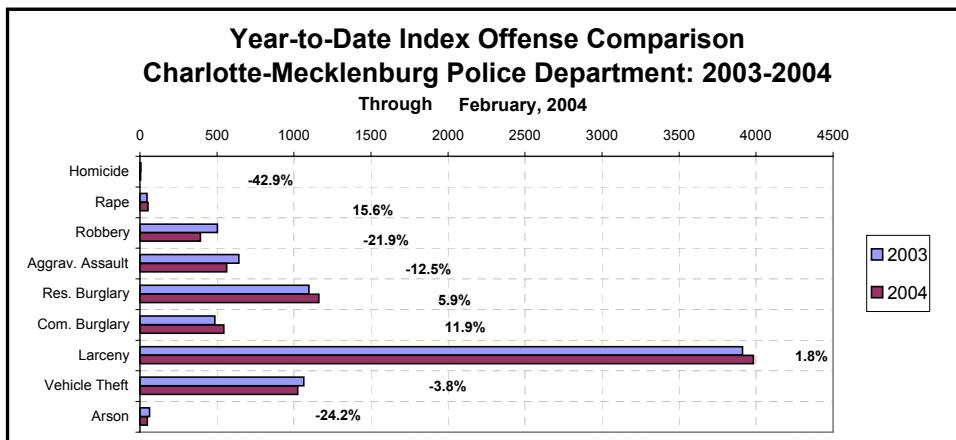
INDEX OFFENSES REPORTED TO CHARLOTTE-MECKLENBURG POLICE DEPARTMENT

February, 2004 INDEX OFFENSES	# THIS MONTH	% OF ALL INDEX	# LAST MONTH	MONTHLY % CHANGE	SAME MONTH LAST YEAR	MONTHLY % CHANGE	THIS YEAR TO DATE	LAST YEAR TO DATE	ANNUAL % CHANGE
HOMICIDE (MURDER & NON-NEGLIGENT MANSLAUGHTER)	1	0.0%	3	-66.7%	2	-50.0%	4	7	-42.9%
RAPE TOTAL	21	0.6%	31	-32.3%	18	16.7%	52	45	15.6%
ACTUAL	19	0.5%	29	-34.5%	16	18.8%	48	42	14.3%
ATTEMPT	2	0.1%	2	0.0%	2	0.0%	4	3	33.3%
ROBBERY TOTAL	150	4.3%	243	-38.3%	170	-11.8%	393	503	-21.9%
ARMED	111	3.2%	190	-41.6%	119	-6.7%	301	387	-22.2%
STRONG-ARM	39	1.1%	53	-26.4%	51	-23.5%	92	116	-20.7%
AGGRAVATED ASSAULT TOTAL	239	6.8%	323	-26.0%	274	-12.8%	562	642	-12.5%
BURGLARY TOTAL	738	20.9%	967	-23.7%	705	4.7%	1705	1582	7.8%
RESIDENTIAL	512	14.5%	649	-21.1%	507	1.0%	1161	1096	5.9%
COMMERCIAL	226	6.4%	318	-28.9%	198	14.1%	544	486	11.9%

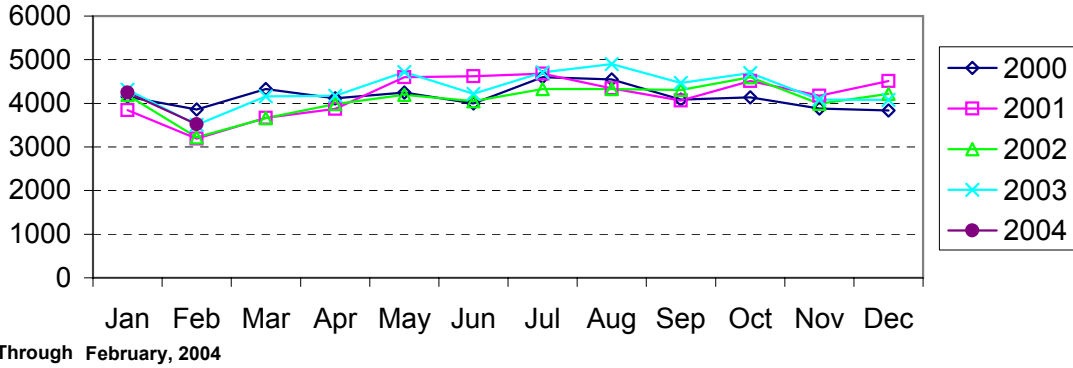
FORCE	556	15.8%	783	-29.0%	584	-4.8%	1339	1294	3.5%
NO FORCE	122	3.5%	123	-0.8%	81	50.6%	245	200	22.5%
ATTEMPT	60	1.7%	61	-1.6%	40	50.0%	121	88	37.5%
LARCENY TOTAL	1891	53.7%	2092	-9.6%	1841	2.7%	3983	3913	1.8%
\$200 AND OVER	923	26.2%	1011	-8.7%	943	-2.1%	1934	1972	-1.9%
\$50 TO \$200	343	9.7%	380	-9.7%	303	13.2%	723	670	7.9%
UNDER \$50	625	17.7%	701	-10.8%	595	5.0%	1326	1271	4.3%

FROM AUTO	982	27.9%	1070	-8.2%	1016	-3.3%	2052	2046	0.3%
BICYCLE	2	0.1%	18	-88.9%	2	0.0%	20	11	81.8%
SHOPLIFTING	181	5.1%	245	-26.1%	196	-7.7%	426	404	5.4%
OTHERS	726	20.6%	759	-4.3%	627	15.8%	1485	1452	2.3%
VEHICLE THEFT TOTAL	462	13.1%	562	-17.8%	481	-4.0%	1024	1064	-3.8%
ARSON TOTAL	21	0.6%	26	-19.2%	17	23.5%	47	62	-24.2%
TOTALS	3523	100.0%	4247	-17.0%	3508	0.4%	7770	7818	-0.6%
VIOLENT PROPERTY	411	11.7%	600	-31.5%	464	-11.4%	1011	1197	-15.5%
PROPERTY	3112	88.3%	3647	-14.7%	3044	2.2%	6759	6621	2.1%

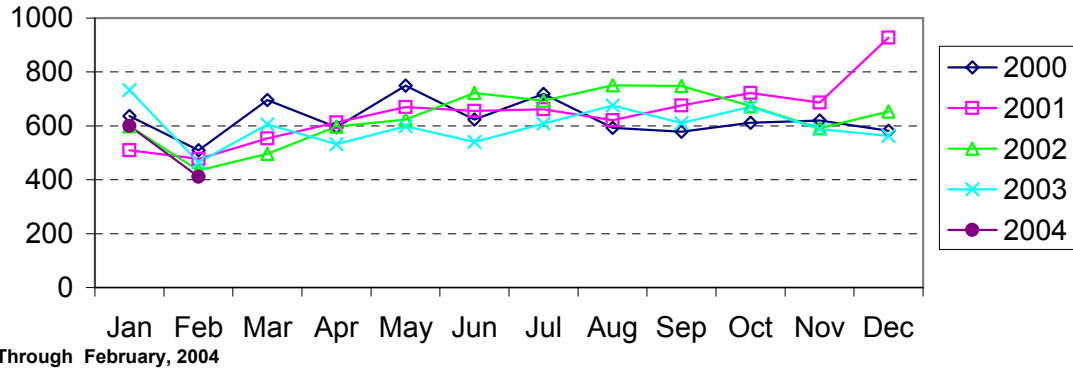
NOTE: These totals include offenses reported to the Charlotte-Mecklenburg Police Department in accordance with the Uniform Crime Reporting Program. Totals for homicide do not include cases investigated by the police but classed by UCR guidelines as negligent manslaughter or as "justifiable homicide."



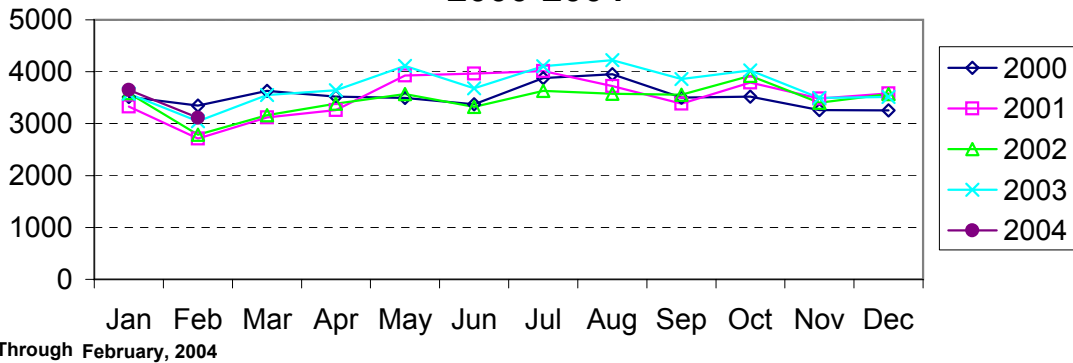
Index Offenses Reported by Month Charlotte-Mecklenburg Police Department: 2000-2004



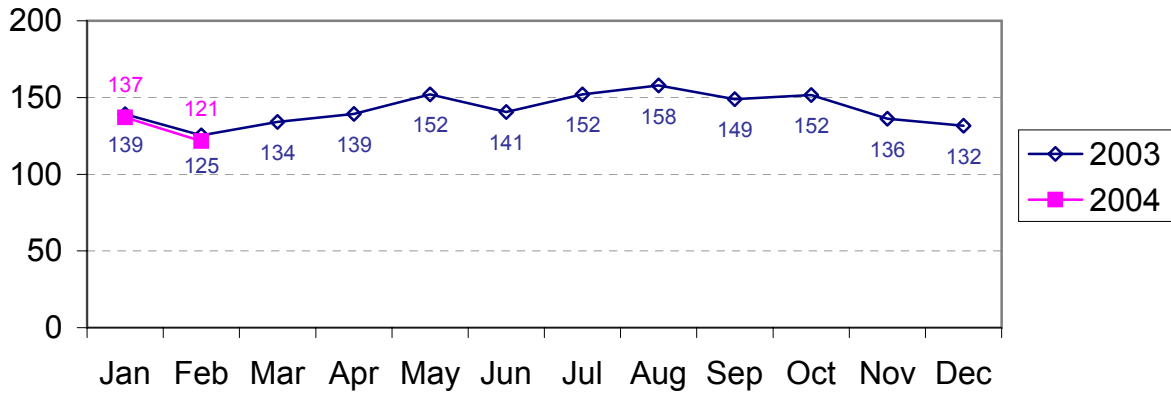
Violent Index Offenses Reported by Month Charlotte-Mecklenburg Police Department: 2000-2004



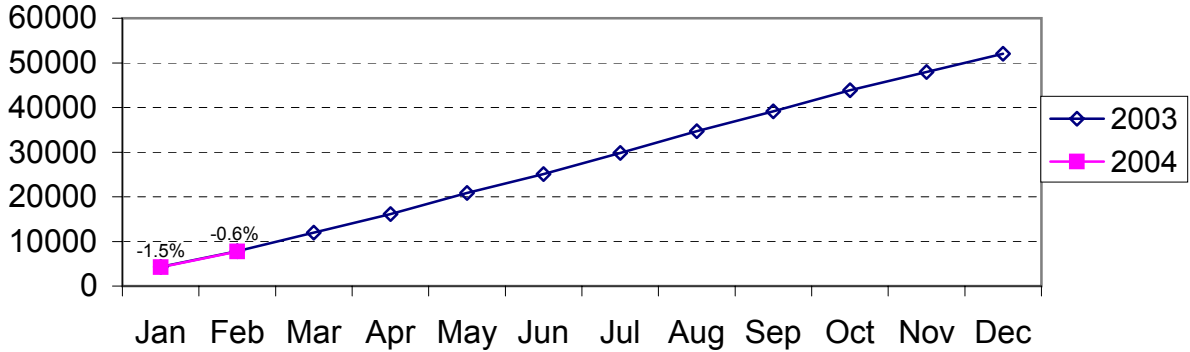
Property Index Offenses Reported by Month Charlotte-Mecklenburg Police Department: 2000-2004



Index Offense Per Day Average by Month Charlotte-Mecklenburg Police Department: 2003-2004

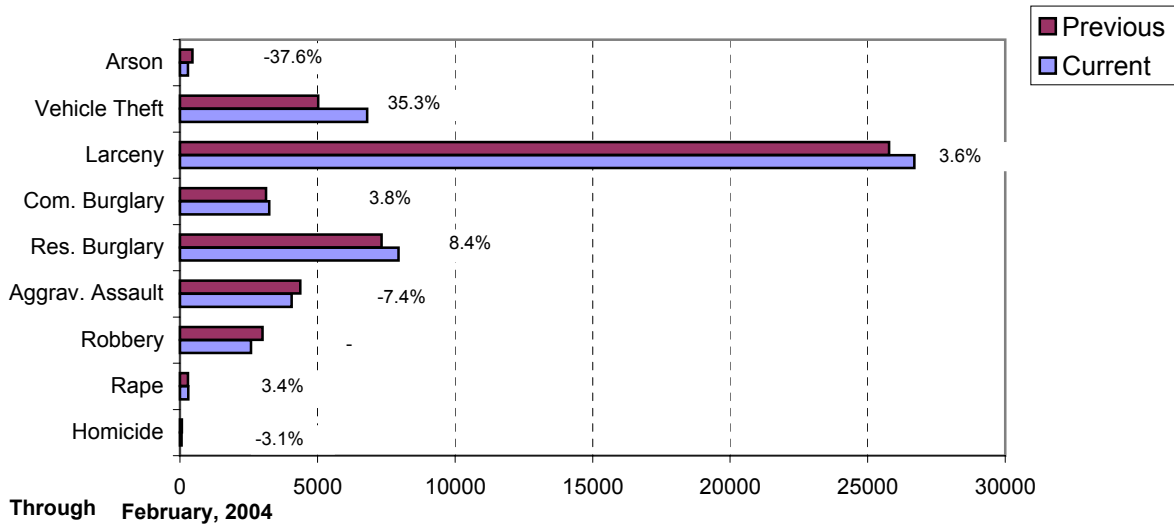


Index Offenses Year-to-Date Cumulative Totals Charlotte-Mecklenburg Police Department: 2002-2003

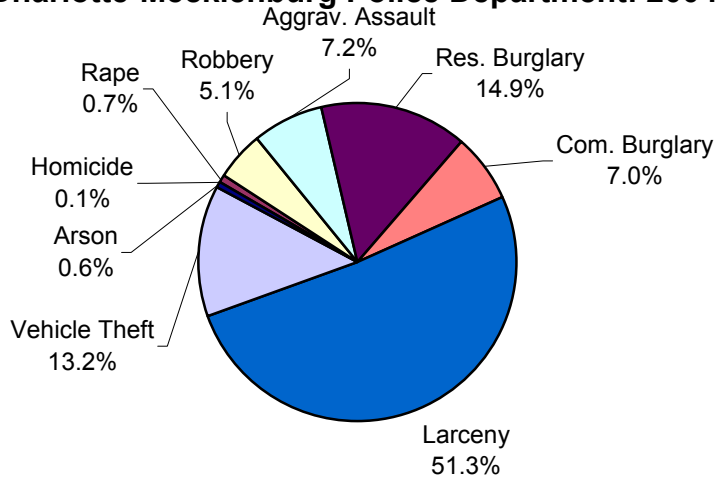


Through February, 2004

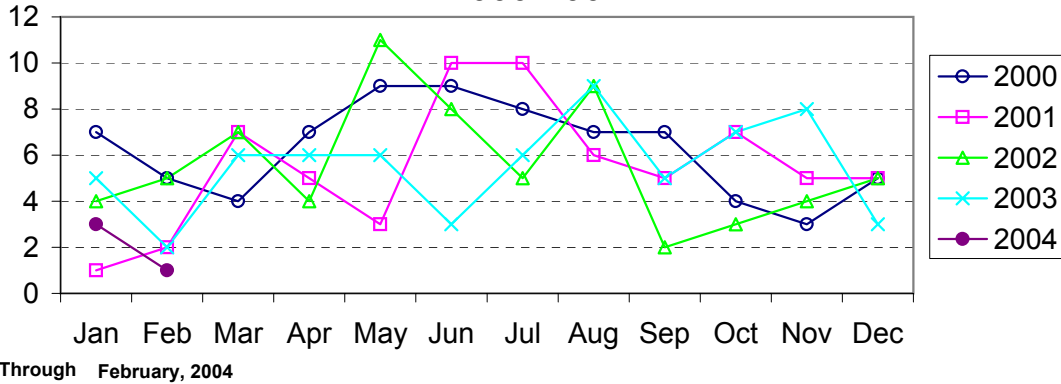
Index Offenses in Current and Previous 12 Months Charlotte-Mecklenburg Police Department: 2003-2004



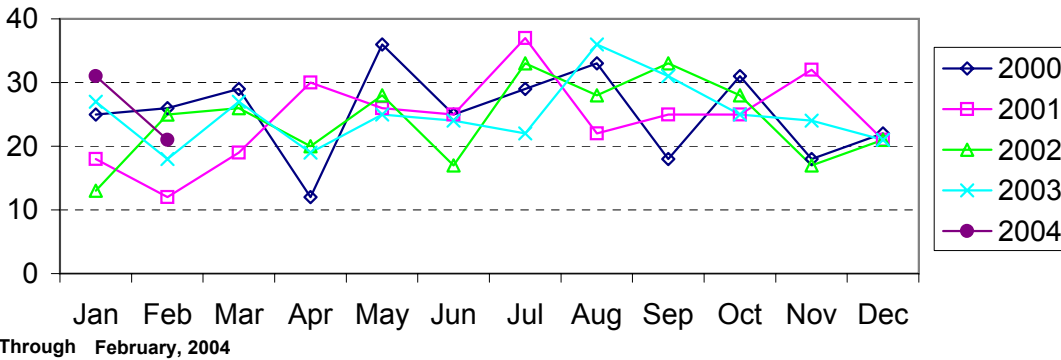
Year-to-Date Index Offenses by Type Charlotte-Mecklenburg Police Department: 2004



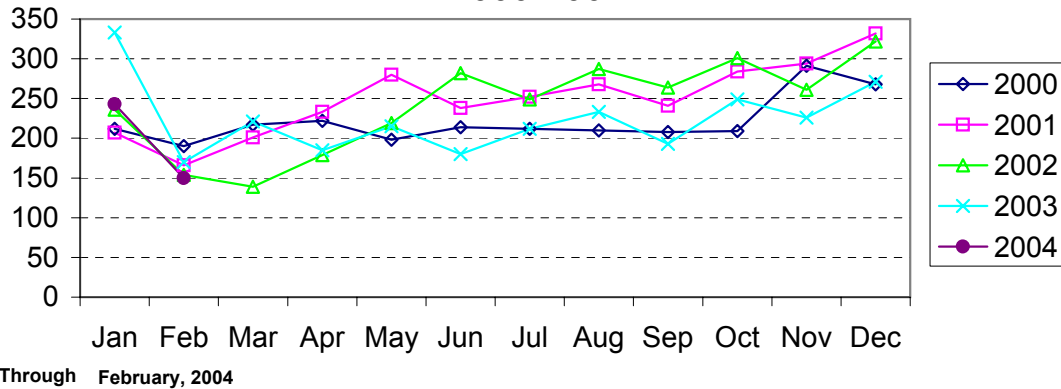
Homicide Reported by Month Charlotte-Mecklenburg Police Department: 2000-2004



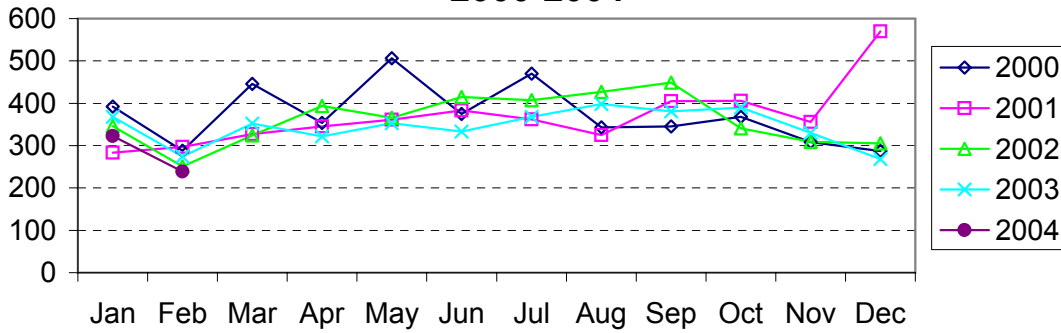
Rape Reported by Month Charlotte-Mecklenburg Police Department: 2000-2004



Robbery Reported by Month Charlotte-Mecklenburg Police Department: 2000-2004

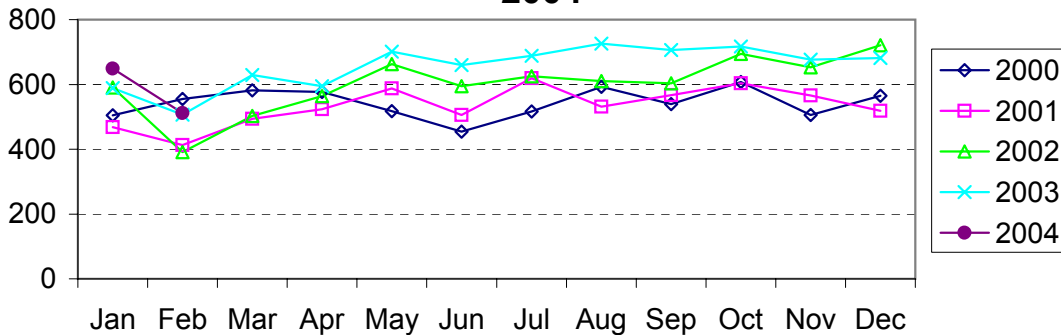


Aggravated Assault Reported by Month Charlotte-Mecklenburg Police Department: 2000-2004



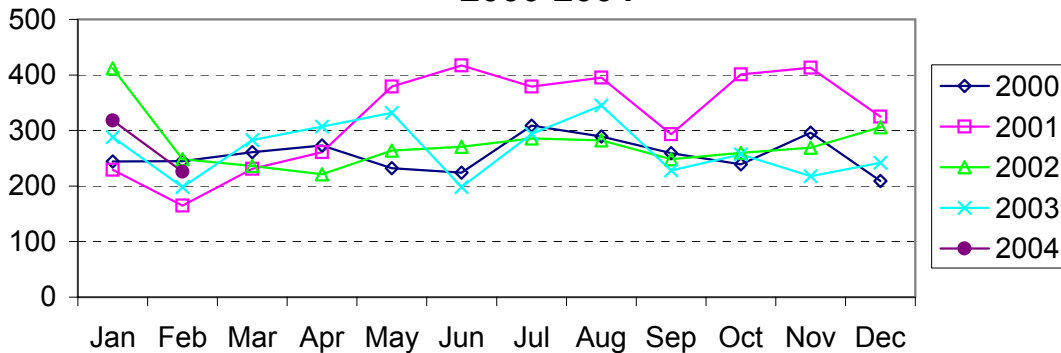
Through February, 2004

Residential Burglary Reported by Month Charlotte-Mecklenburg Police Department: 2000- 2004



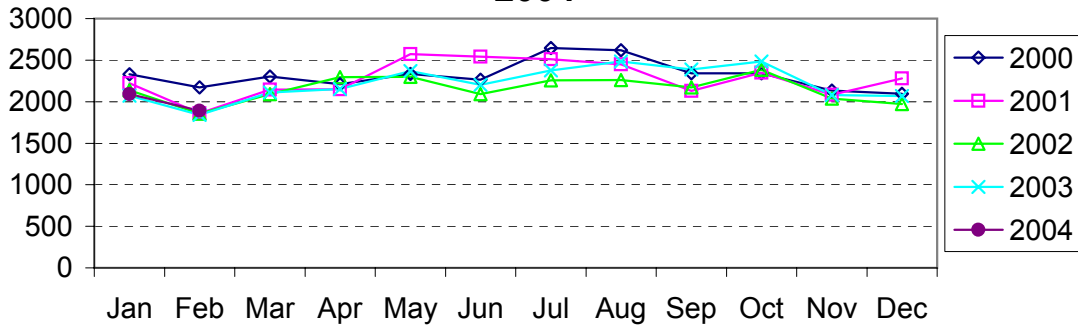
Through February, 2004

Commercial Burglary Reported by Month Charlotte-Mecklenburg Police Department: 2000-2004



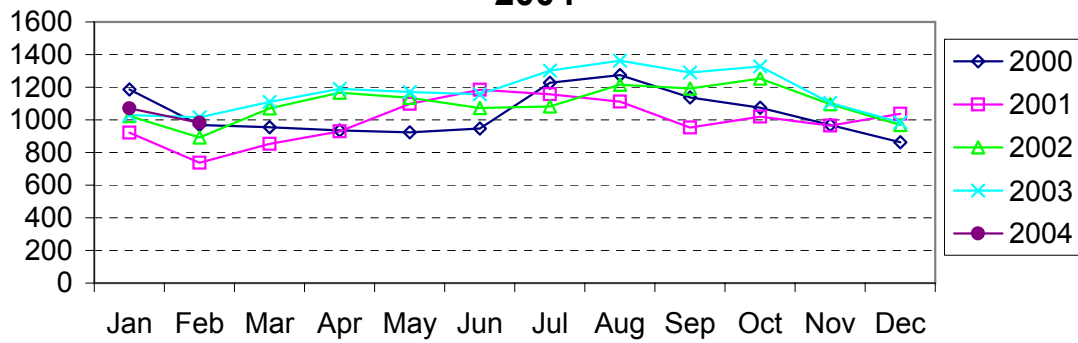
Through February, 2004

Larceny Reported by Month Charlotte-Mecklenburg Police Department: 2000-2004



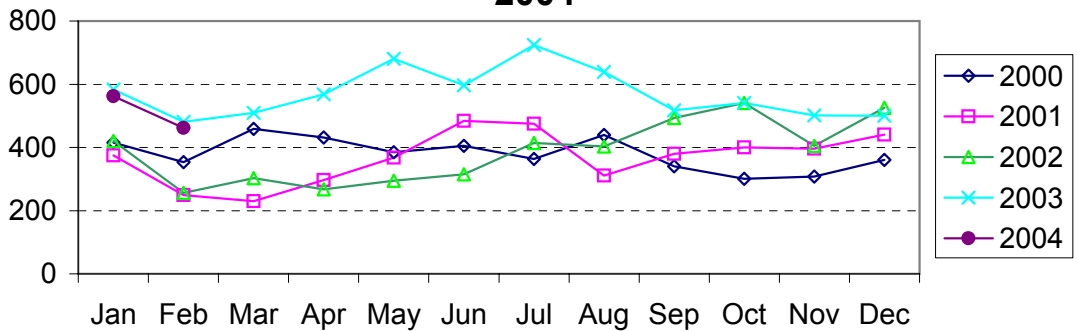
Through February, 2004

Larceny from Vehicle Reported by Month Charlotte-Mecklenburg Police Department: 2000-2004



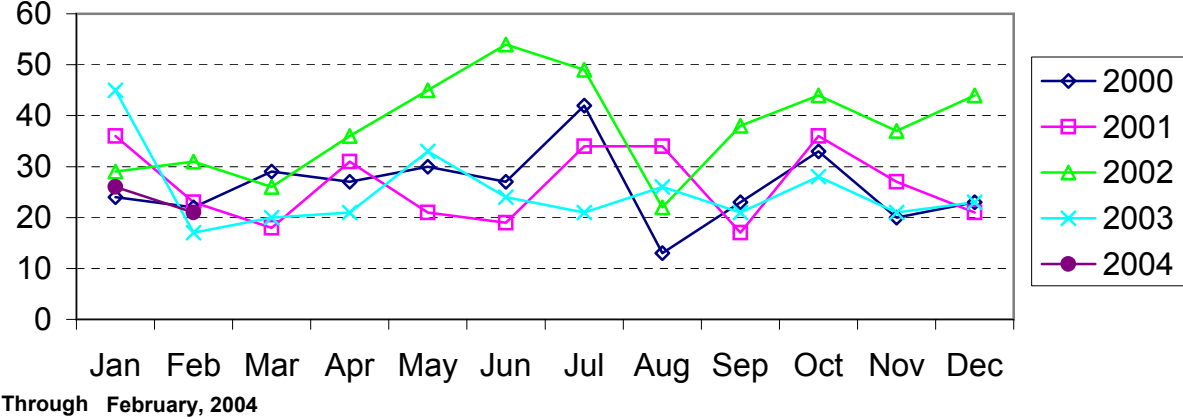
Through February, 2004

Vehicle Theft Reported by Month Charlotte-Mecklenburg Police Department: 2000-2004



Through February, 2004

Arson Reported by Month Charlotte-Mecklenburg Police Department: 2000-2004



Index Offenses Reported by Division and Service Area of Occurrence									
West Service Area: Jan-Feb, 2003-2004									
INDEX_CATEGORIES	Westover (A2)			Freedom (A3)			West Service Area		
	2003	2004	% Change	2003	2004	% Change	2003	2004	% Change
MURDER & NON-NEGLIGENT MANSLAUGHTER	1	0	-100.0%	0	0	NA	1	0	-100.0%
RAPE	3	4	33.3%	3	1	-66.7%	6	5	-16.7%
ACTUAL	3	4	33.3%	3	1	-66.7%	6	5	-16.7%
ATTEMPTED	0	0	NA	0	0	NA	0	0	NA
ROBBERY	48	34	-29.2%	36	47	30.6%	84	81	-3.6%
ARMED	39	28	-28.2%	22	37	68.2%	61	65	6.6%
STRONG-ARM	9	6	-33.3%	14	10	-28.6%	23	16	-30.4%
AGGRAVATED ASSAULT	69	41	-40.6%	92	51	-44.6%	161	92	-42.9%
BURGLARY	128	123	-3.9%	206	179	-13.1%	334	302	-9.6%
RESIDENTIAL	97	76	-21.6%	121	132	9.1%	218	208	-4.6%
COMMERCIAL	31	47	51.6%	85	47	-44.7%	116	94	-19.0%
LARCENY	215	229	6.5%	314	371	18.2%	529	600	13.4%
FROM AUTO	107	111	3.7%	147	185	25.9%	254	296	16.5%
BICYCLE	0	1	NA	0	0	NA	0	1	NA
SHOPLIFTING	22	32	45.5%	20	52	160.0%	42	84	100.0%
OTHERS	86	85	-1.2%	147	134	-8.8%	233	219	-6.0%
VEHICLE THEFT	61	59	-3.3%	115	135	17.4%	176	194	10.2%
ARSON	6	6	0.0%	10	7	-30.0%	16	13	-18.8%
TOTALS	531	496	-6.6%	776	791	1.9%	1307	1287	-1.5%
VIOLENT	121	79	-34.7%	131	99	-24.4%	252	178	-29.4%
PROPERTY	410	417	1.7%	645	692	7.3%	1055	1109	5.1%

Index Offenses Reported by Division and Service Area of Occurrence									
Southeast Service Area: Jan-Feb, 2003-2004									
INDEX_CATEGORIES	Providence (B1)			Independence (B3)			Southeast Service Area		
	2003	2004	% Change	2003	2004	% Change	2003	2004	% Change
MURDER & NON-NEGLIGENT MANSLAUGHTER	0	0	NA	0	0	NA	0	0	NA
RAPE	7	6	-14.3%	4	4	0.0%	11	10	-9.1%
ACTUAL	6	6	0.0%	4	4	0.0%	10	10	0.0%
ATTEMPTED	1	0	-100.0%	0	0	NA	1	0	-100.0%
ROBBERY	25	21	-16.0%	54	34	-37.0%	79	55	-30.4%
ARMED	19	15	-21.1%	48	26	-45.8%	67	41	-38.8%
STRONG-ARM	6	6	0.0%	7	8	14.3%	13	14	7.7%
AGGRAVATED ASSAULT	31	32	3.2%	49	45	-8.2%	80	77	-3.8%
BURGLARY	129	152	17.8%	144	174	20.8%	273	326	19.4%
RESIDENTIAL	73	70	-4.1%	114	119	4.4%	187	189	1.1%
COMMERCIAL	56	82	46.4%	30	55	83.3%	86	137	59.3%
LARCENY	255	272	6.7%	408	350	-14.2%	663	622	-6.2%
FROM AUTO	110	126	14.5%	228	212	-7.0%	338	338	0.0%
BICYCLE	1	1	0.0%	2	1	-50.0%	3	2	-33.3%
SHOPLIFTING	34	25	-26.5%	40	30	-25.0%	74	55	-25.7%
OTHERS	110	120	9.1%	138	107	-22.5%	248	227	-8.5%
VEHICLE THEFT	55	45	-18.2%	121	124	2.5%	176	169	-4.0%
ARSON	2	3	50.0%	6	4	-33.3%	8	7	-12.5%
TOTALS	504	531	5.4%	786	735	-6.5%	1290	1266	-1.9%
VIOLENT	63	59	-6.3%	107	83	-22.4%	170	142	-16.5%
PROPERTY	441	472	7.0%	679	652	-4.0%	1120	1124	0.4%

The data in the district breakdowns does not include a small number of offenses in which the location of the offense was unknown or was entered without a valid tract assignment. Districts are not equal in geographic size, demographics, zoning/development, and other factors that influence the rate of crimes committed in an area. Therefore, the comparison of raw offense totals across districts is not advisable.

Index Offenses Reported by Division and Service Area of Occurrence									
Northeast Service Area: Jan-Feb, 2003-2004									
INDEX_CATEGORIES	North (C1)			Hickory Grove (C3)			Northeast Service Area		
	2003	2004	% Change	2003	2004	% Change	2003	2004	% Change
MURDER & NON-NEGLIGENT MANSLAUGHTER	1	0	-100.0%	2	0	-100.0%	3	0	-100.0%
RAPE	2	8	300.0%	9	4	-55.6%	11	12	9.1%
ACTUAL	2	7	250.0%	8	4	-50.0%	10	11	10.0%
ATTEMPTED	0	1	NA	1	0	-100.0%	1	1	0.0%
ROBBERY	33	30	-9.1%	44	36	-18.2%	77	66	-14.3%
ARMED	27	24	-11.1%	38	26	-31.6%	65	50	-23.1%
STRONG-ARM	6	6	0.0%	6	10	66.7%	12	16	33.3%
AGGRAVATED ASSAULT	47	60	27.7%	57	55	-3.5%	104	115	10.6%
BURGLARY	174	184	5.7%	142	172	21.1%	316	356	12.7%
RESIDENTIAL	115	137	19.1%	115	131	13.9%	230	268	16.5%
COMMERCIAL	59	47	-20.3%	27	41	51.9%	86	88	2.3%
LARCENY	568	613	7.9%	359	299	-16.7%	927	912	-1.6%
FROM AUTO	356	350	-1.7%	197	164	-16.8%	553	514	-7.1%
BICYCLE	1	4	300.0%	2	5	150.0%	3	9	200.0%
SHOPLIFTING	50	53	6.0%	40	18	-55.0%	90	71	-21.1%
OTHERS	161	206	28.0%	120	112	-6.7%	281	318	13.2%
VEHICLE THEFT	112	111	-0.9%	143	101	-29.4%	255	212	-16.9%
ARSON	9	3	-66.7%	8	3	-62.5%	17	6	-64.7%
TOTALS	946	1009	6.7%	764	670	-12.3%	1710	1679	-1.8%
VIOLENT	83	98	18.1%	112	95	-15.2%	195	193	-1.0%
PROPERTY	863	911	5.6%	652	575	-11.8%	1515	1486	-1.9%

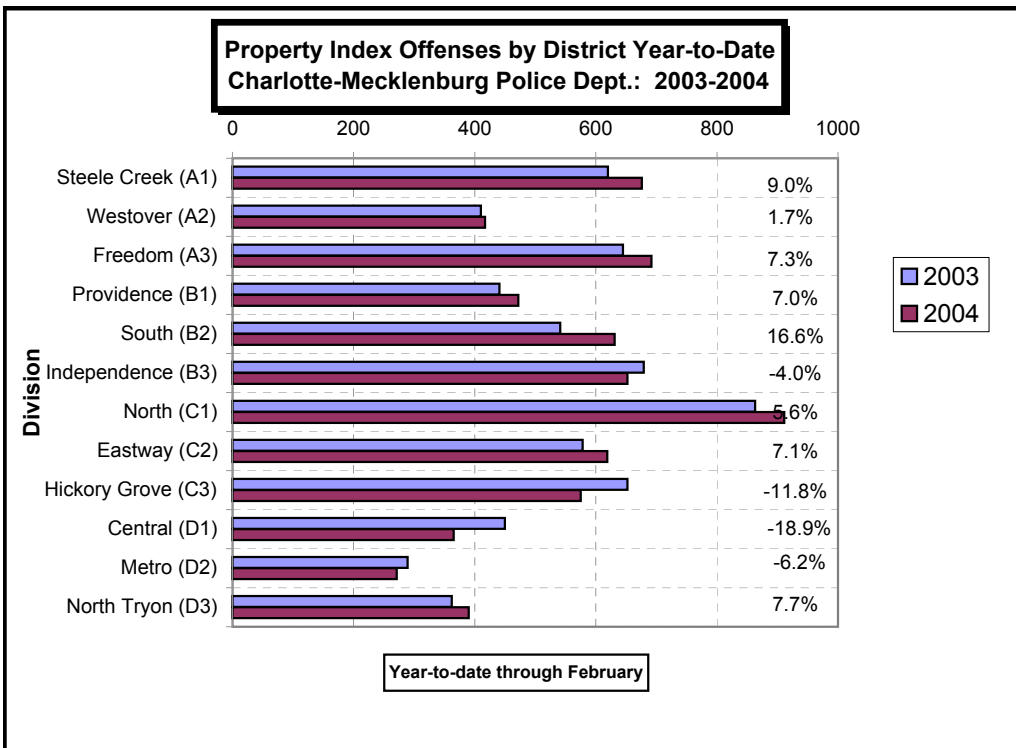
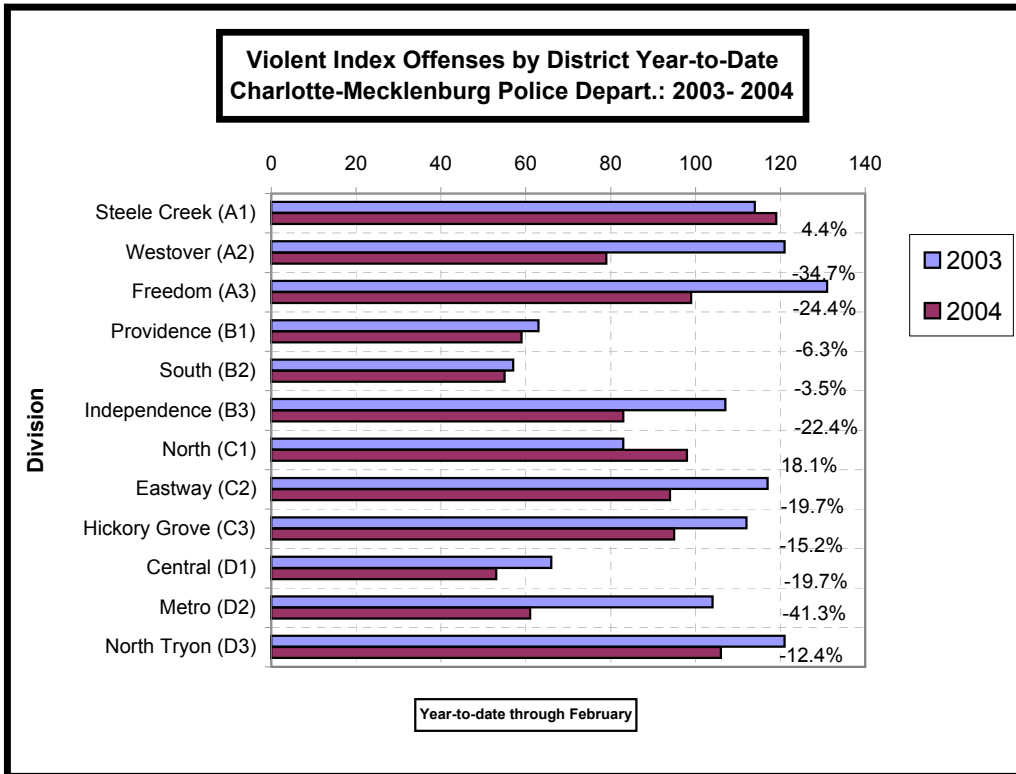
Index Offenses Reported by Division and Service Area of Occurrence									
Central Service Area: Jan-Feb, 2003-2004									
INDEX_CATEGORIES	Central (D1)			Metro (D2)			Central Service Area		
	2003	2004	% Change	2003	2004	% Change	2003	2004	% Change
MURDER & NON-NEGLIGENT MANSLAUGHTER	2	0	-100.0%	1	0	-100.0%	3	0	-100.0%
RAPE	3	3	0.0%	5	5	0.0%	8	8	0.0%
ACTUAL	3	2	-33.3%	5	5	0.0%	8	7	-12.5%
ATTEMPTED	0	1	NA	0	0	NA	0	1	NA
ROBBERY	18	22	22.2%	40	26	-35.0%	58	48	-17.2%
ARMED	9	14	55.6%	27	23	-14.8%	36	37	2.8%
STRONG-ARM	9	8	-11.1%	13	3	-76.9%	22	11	-50.0%
AGGRAVATED ASSAULT	43	28	-34.9%	58	30	-48.3%	101	58	-42.6%
BURGLARY	70	56	-20.0%	82	74	-9.8%	152	130	-14.5%
RESIDENTIAL	34	23	-32.4%	53	56	5.7%	87	79	-9.2%
COMMERCIAL	36	33	-8.3%	29	18	-37.9%	65	51	-21.5%
LARCENY	292	273	-6.5%	137	147	7.3%	429	420	-2.1%
FROM AUTO	139	130	-6.5%	74	65	-12.2%	213	195	-8.5%
BICYCLE	0	2	NA	0	1	NA	0	3	NA
SHOPLIFTING	13	8	-38.5%	2	14	600.0%	15	22	46.7%
OTHERS	140	133	-5.0%	61	67	9.8%	201	200	-0.5%
VEHICLE THEFT	86	36	-58.1%	66	48	-27.3%	152	84	-44.7%
ARSON	2	0	-100.0%	4	2	-50.0%	6	2	-66.7%
TOTALS	516	418	-19.0%	393	332	-15.5%	909	750	-17.5%
VIOLENT	66	53	-19.7%	104	61	-41.3%	170	114	-32.9%
PROPERTY	450	365	-18.9%	289	271	-6.2%	739	636	-13.9%

The data in the district breakdowns does not include a small number of offenses in which the location of the offense was unknown or was entered without a valid tract assignment. Districts are not equal in geographic size, demographics, zoning/development, and other factors that influence the rate of crimes committed in an area. Therefore, the comparison of raw offense totals across districts is not advisable.

Index Offenses Reported by Division and Service Area of Occurrence									
East Service Area: Jan-Feb, 2003-2004									
INDEX_CATEGORIES	Eastway (C2)			North Tryon (D3)			East Service Area		
	2003	2004	% Change	2003	2004	% Change	2003	2004	% Change
MURDER & NON-NEGLIGENT MANSLAUGHTER	0	0	NA	0	1	NA	0	1	NA
RAPE	1	1	0.0%	4	5	25.0%	5	6	20.0%
ACTUAL	1	1	0.0%	4	4	0.0%	5	5	0.0%
ATTEMPTED	0	0	NA	0	1	NA	0	1	NA
ROBBERY	65	40	-38.5%	57	42	-26.3%	122	82	-32.8%
ARMED	51	28	-45.1%	45	34	-24.4%	96	62	-35.4%
STRONG-ARM	14	12	-14.3%	12	8	-33.3%	26	20	-23.1%
AGGRAVATED ASSAULT	51	53	3.9%	60	58	-3.3%	111	111	0.0%
BURGLARY	136	174	27.9%	94	116	23.4%	230	290	26.1%
RESIDENTIAL	106	97	-8.5%	70	83	18.6%	176	180	2.3%
COMMERCIAL	30	77	156.7%	24	33	37.5%	54	110	103.7%
LARCENY	359	347	-3.3%	178	197	10.7%	537	544	1.3%
FROM AUTO	170	156	-8.2%	104	102	-1.9%	274	258	-5.8%
BICYCLE	4	1	-75.0%	0	2	NA	4	3	-25.0%
SHOPLIFTING	74	73	-1.4%	10	14	40.0%	84	87	3.6%
OTHERS	111	117	5.4%	64	79	23.4%	175	196	12.0%
VEHICLE THEFT	80	96	20.0%	88	75	-14.8%	168	171	1.8%
ARSON	3	2	-33.3%	2	2	0.0%	5	4	-20.0%
TOTALS	695	713	2.6%	483	496	2.7%	1178	1209	2.6%
VIOLENT	117	94	-19.7%	121	106	-12.4%	238	200	-16.0%
PROPERTY	578	619	7.1%	362	390	7.7%	940	1009	7.3%

Index Offenses Reported by Division and Service Area of Occurrence									
South Service Area: Jan-Feb, 2003-2004									
INDEX_CATEGORIES	Steele Creek (A1)			South (B2)			South Service Area		
	2003	2004	% Change	2003	2004	% Change	2003	2004	% Change
MURDER & NON-NEGLIGENT MANSLAUGHTER	0	3	NA	0	0	NA	0	3	NA
RAPE	2	5	150.0%	2	5	150.0%	4	10	150.0%
ACTUAL	2	4	100.0%	1	5	400.0%	3	9	200.0%
ATTEMPTED	0	1	NA	1	0	-100.0%	1	1	0.0%
ROBBERY	60	34	-43.3%	23	24	4.3%	83	58	-30.1%
ARMED	38	26	-31.6%	15	18	20.0%	53	44	-17.0%
STRONG-ARM	12	8	-33.3%	8	6	-25.0%	20	14	-30.0%
AGGRAVATED ASSAULT	52	77	48.1%	32	26	-18.8%	84	103	22.6%
BURGLARY	113	143	26.5%	141	137	-2.8%	254	280	10.2%
RESIDENTIAL	77	115	49.4%	106	111	4.7%	183	226	23.5%
COMMERCIAL	36	28	-22.2%	35	26	-25.7%	71	54	-23.9%
LARCENY	425	415	-2.4%	347	419	20.7%	772	834	8.0%
FROM AUTO	193	196	1.6%	190	231	21.6%	383	427	11.5%
BICYCLE	1	2	100.0%	0	0	NA	1	2	100.0%
SHOPLIFTING	68	81	19.1%	27	26	-3.7%	95	107	12.6%
OTHERS	163	136	-16.6%	130	162	24.6%	293	298	1.7%
VEHICLE THEFT	79	109	38.0%	48	70	45.8%	127	179	40.9%
ARSON	3	9	200.0%	5	5	0.0%	8	14	75.0%
TOTALS	734	795	8.3%	598	686	14.7%	1332	1481	11.2%
VIOLENT	114	119	4.4%	57	55	-3.5%	171	174	1.8%
PROPERTY	620	676	9.0%	541	631	16.6%	1161	1307	12.6%

The data in the district breakdowns does not include a small number of offenses in which the location of the offense was unknown or was entered without a valid tract assignment. Districts are not equal in geographic size, demographics, zoning/development, and other factors that influence the rate of crimes committed in an area. Therefore, the comparison of raw offense totals across districts is not advisable.



The data in the district breakdowns does not include a small number of offenses in which the location of the offense was unknown or was entered without a valid tract assignment. Districts are not equal in geographic size, demographics, zoning/development, and other factors that influence the rate of crimes committed in an area. Therefore, the comparison of raw offense totals across districts is not advisable.

Arrests by Charlotte-Mecklenburg Police Department
Year-To-Date: 2003-2004
(Through February)

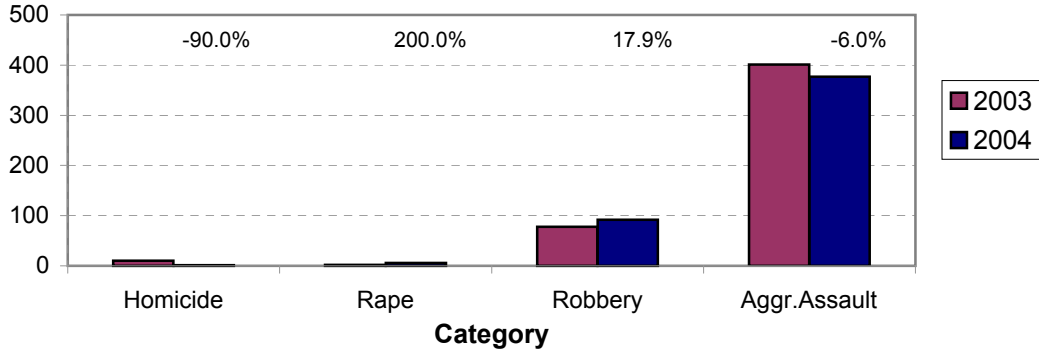
CATEGORY	ADULTS (AGE 18 & OLDER):			JUVENILES (UNDER 18):			TOTAL ARRESTS:		
	2003 Y-T-D	2004 Y-T-D	% CHANGE	2003 Y-T-D	2004 Y-T-D	% CHANGE	2003 Y-T-D	2004 Y-T-D	% CHANGE
Murder/Non-Negligent Manslaughter	10	1	-90.0%	0	0	NA	10	1	-90.0%
Negligent & Vehicular Manslaughter	0	3	NA	0	0	NA	0	3	NA
Rape	2	5	150.0%	0	1	NA	2	6	200.0%
Robbery	58	57	-1.7%	20	35	75.0%	78	92	17.9%
Aggravated Assault	347	320	-7.8%	54	57	5.6%	401	377	-6.0%
Burglary	73	90	23.3%	30	22	-26.7%	103	112	8.7%
Larceny	221	218	-1.4%	113	88	-22.1%	334	306	-8.4%
Vehicle Theft	25	16	-36.0%	84	38	-54.8%	109	54	-50.5%
Non-Aggravated Assault	286	265	-7.3%	147	150	2.0%	433	415	-4.2%
Arson	5	3	-40.0%	7	3	-57.1%	12	6	-50.0%
Forgery/Counterfiet	12	21	75.0%	0	2	NA	12	23	91.7%
Fraud	70	89	27.1%	2	0	-100.0%	72	89	23.6%
Embezzlement	20	13	-35.0%	2	1	-50.0%	22	14	-36.4%
Stolen Property	101	79	-21.8%	29	15	-48.3%	130	94	-27.7%
Vandalism	33	44	33.3%	22	29	31.8%	55	73	32.7%
Weapons	80	66	-17.5%	7	10	42.9%	87	76	-12.6%
Prostitution	26	33	26.9%	0	3	NA	26	36	38.5%
Sex Offenses	23	23	0.0%	6	3	-50.0%	29	26	-10.3%
Drugs	585	371	-36.6%	69	38	-44.9%	654	409	-37.5%
Gambling	2	2	0.0%	0	0	NA	2	2	0.0%
Offenses vs. Family	4	1	-75.0%	0	0	NA	4	1	-75.0%
DUI	304	282	-7.2%	1	2	100.0%	305	284	-6.9%
Liquor	22	24	9.1%	3	0	-100.0%	25	24	-4.0%
Disorder Conduct	69	96	39.1%	59	53	-10.2%	128	149	16.4%
Other Non-Traffic	1111	1191	7.2%	114	118	3.5%	1225	1309	6.9%
VIOLENT INDEX¹	417	383	-8.2%	74	93	25.7%	491	476	-3.1%
PROPERTY INDEX²	324	327	0.9%	234	151	-35.5%	558	478	-14.3%
INDEX SUBTOTAL	741	710	-4.2%	308	244	-20.8%	1049	954	-9.1%
PART 2 SUBTOTAL³	2748	2603	-5.3%	461	424	-8.0%	3209	3027	-5.7%
TOTAL	3489	3313	-5.0%	769	668	-13.1%	4258	3981	-6.5%

¹Violent Index includes murder and non-negligent manslaughter, rape, robbery, and aggravated assault.

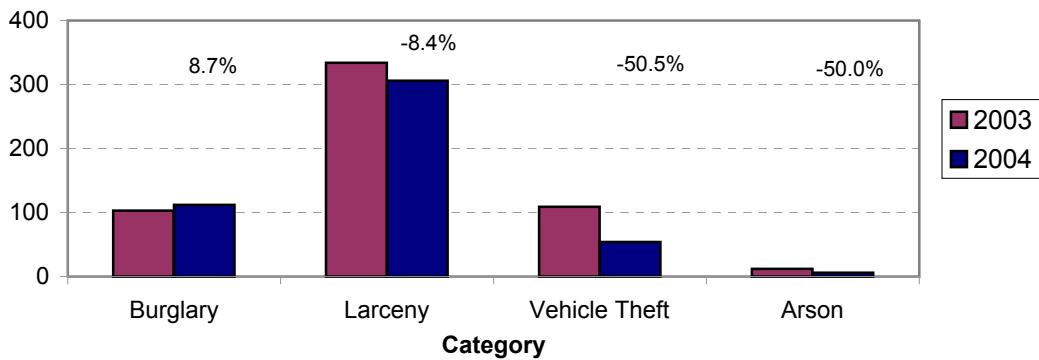
²Property Index includes burglary, larceny, vehicle theft, and arson.

³Part 2 crimes include non-traffic crimes not counted in the Index totals.

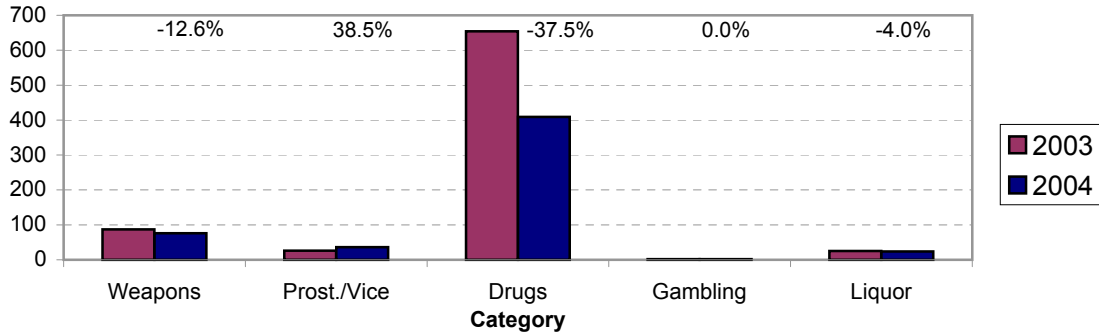
**Violent Index Arrests Year-to-Date
Charlotte-Mecklenburg Police Department: 2003-2004
(Through February)**



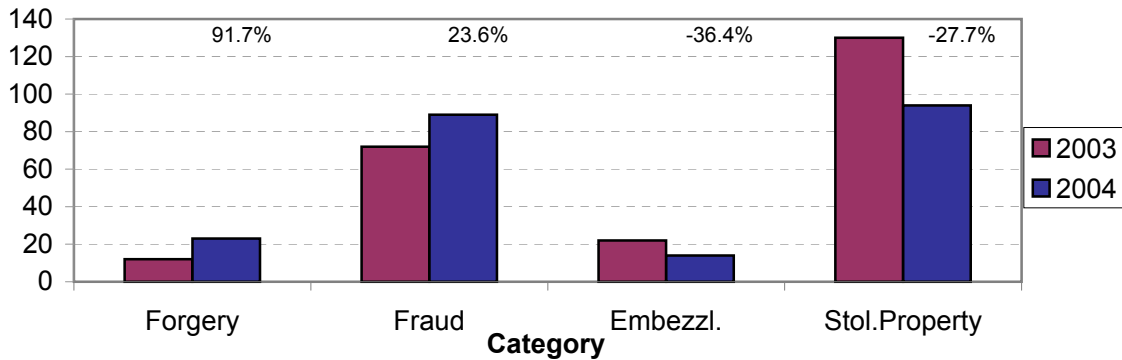
**Property Index Arrests Year-to-Date
Charlotte-Mecklenburg Police Department: 2003-2004
(Through February)**



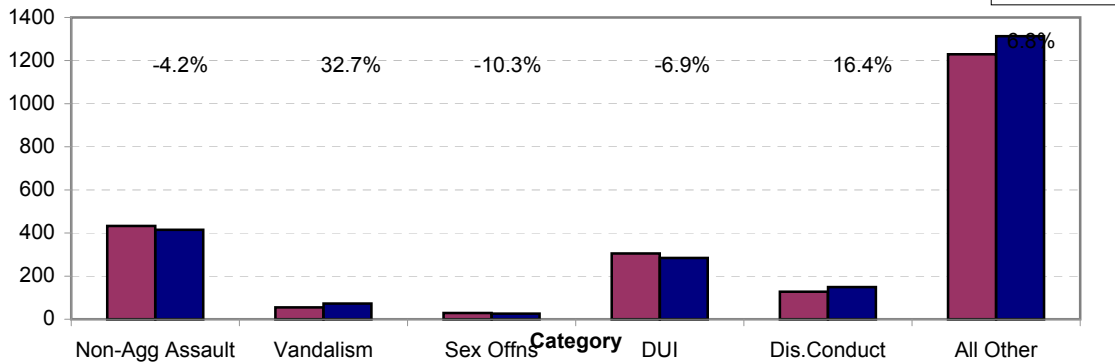
**Arrests for Vice/CCW/Drugs/Etc. Year-to-Date
Charlotte-Mecklenburg Police Department: 2003 - 2004
(Through February)**



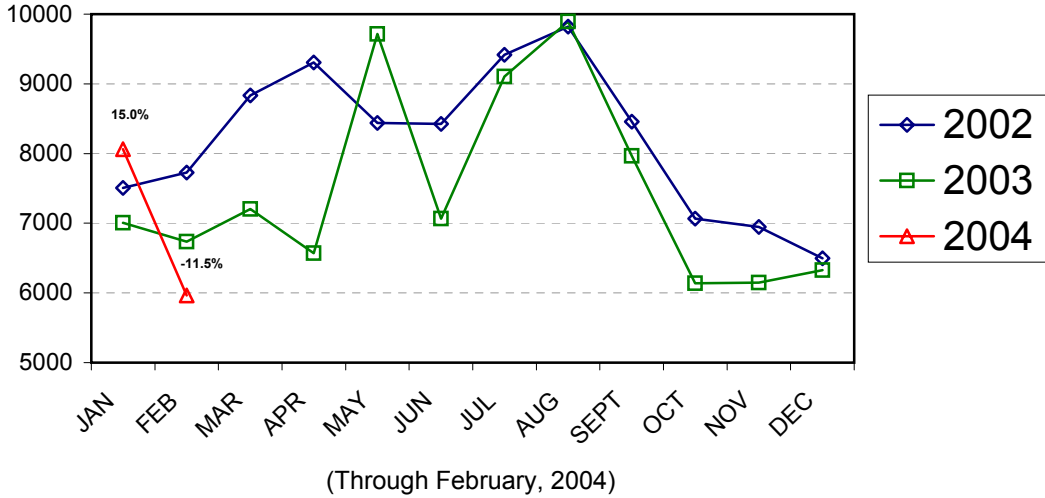
**Arrests for Property/White Collar Crime Year-to-Date
Charlotte-Mecklenburg Police Department: 2003 - 2004
(Through February)**



**Arrests for Other Categories Year-to-Date
Charlotte-Mecklenburg Police Department: 2003 - 2004
(Through February)**

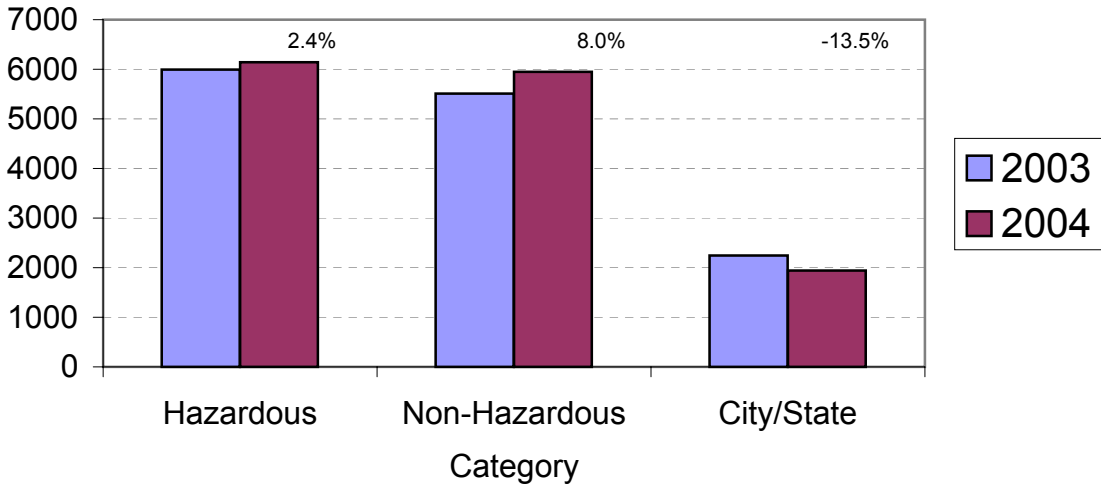


Total Citation Enforcement by Month Charlotte-Mecklenburg Police Dept.: 2002-2004

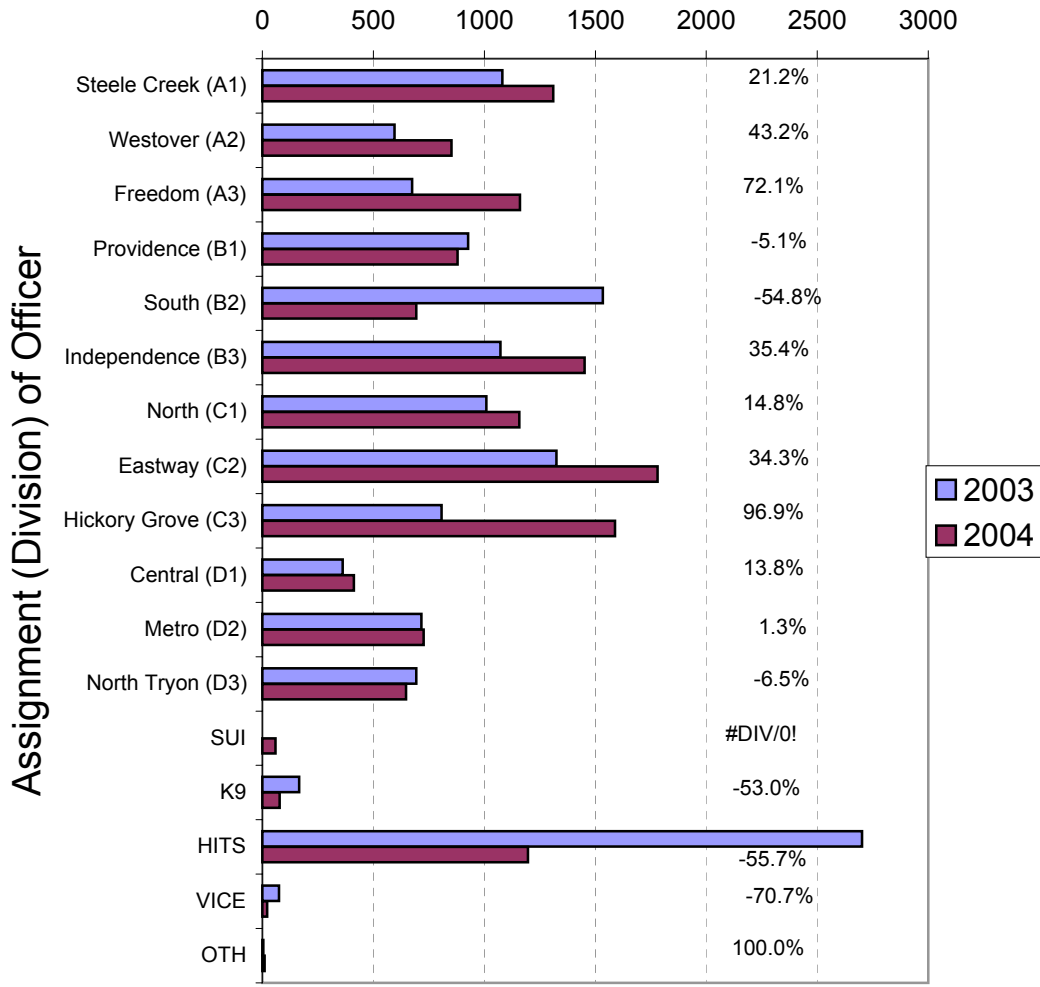


(Through February, 2004)
(Includes Hazardous, Non-Hazardous, and City/State Citations)

CMPD Citation Enforcement by Category Year-to-Date, 2003 - 2004 (Through February, 2004)



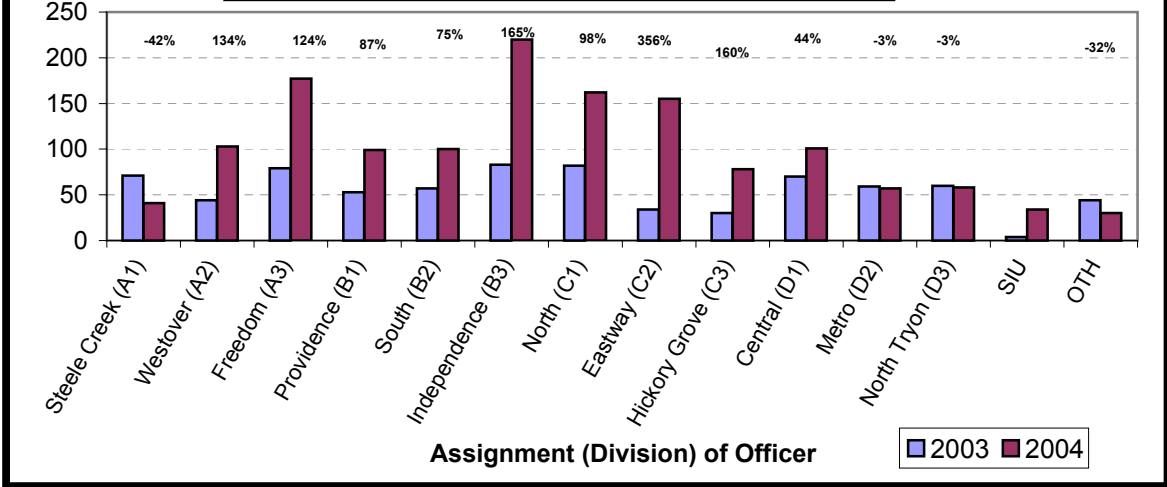
**Citations Issued Year-to-Date by CMPD Divisions
2003 - 2004
(Through February, 2004)**



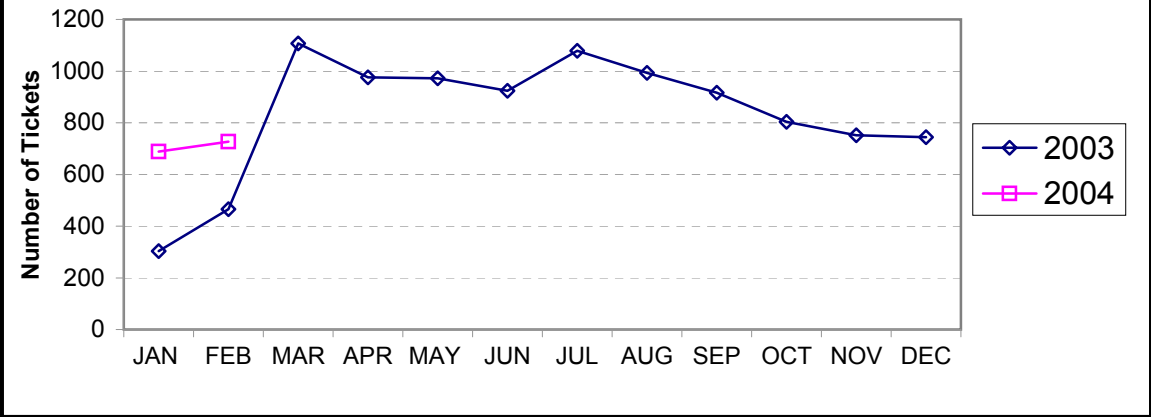
**Citations Issued by the Charlotte Mecklenburg Police Dept. Year-to-Date
(Through February, 2004)**

Total Citations	2003	2004	% Change
Hazardous	5,994	6,139	2.4%
Non-Hazardous	5,507	5,946	8.0%
Other City/State Statute/Ordinance	2,242	1,939	-13.5%
Total	13,743	14,024	2.0%

**Warning Tickets Issued by CMPD Division
Year-to-Date, 2003 - 2004
Through February, 2004**



**Total Warning Tickets Issued by CMPD
By Month: 2003 - 2004**



**Warning Tickets Issued by CMPD Year-to-Date
Through February, 2004**

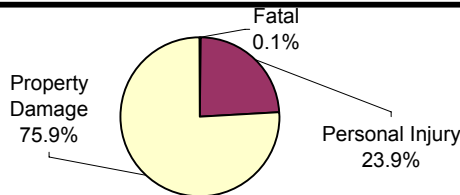
	2003	2004	% Change
Total Warning Tickets	770	1415	83.8%

**Traffic Collison Reports
Charlotte-Mecklenburg Police Department
Year-to-Date: 2003-2004
(Through February)**

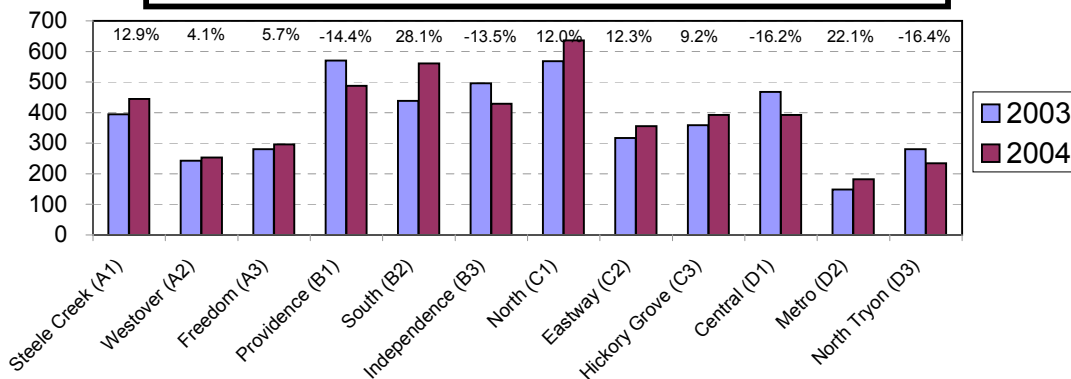
<u>Type</u>	<u>2003</u>	<u>2004</u>	<u>% Change</u>
Fatal Collisions	8	7	-12.5%
Vehicle Occupants Killed	9	6	-33.3%
Pedestrians Killed	1	1	0.0%
Personal Injury Collisions	1007	1115	10.5%
Property Damage Collisions	3588	3560	-0.8%
Total Collisions	4603	4682	1.7%

* The number of fatal collisions and the number of persons killed in those incidents is taken from the HITS file. Their records are updated for deaths that occur after the initial report is filed.

**Traffic Collisions Reported by Type
Charlotte-Mecklenburg Police Department:
2004 Year-to-Date
(Through February)**



**Traffic Collisions Reported by Charlotte-Mecklenburg Police Dept.
Year-to-Date By Location (Division) : 2003 -2004
(Through February)**



Uniform Crime Reporting Procedures:

The Charlotte-Mecklenburg Police Department reports offense and arrest statistics in accordance with standard Uniform Crime Reporting (UCR) guidelines. UCR policy states that any adjustments to previous months can be made on the current month's report:

...In tabulating crime counts, an agency may find that offense totals for past months require adjustments due to developments in the investigation or other handling of the matter. It may be necessary to adjust totals reported to UCR for the past month or prior months. Needed adjustments can be made on the current month's report and do not affect the reliability of the figures in that such adjustments tend to equalize each other from month to month over a period of time.

- *Uniform Crime Reporting Handbook*, FBI, 1984, p. 42-43

We are required to report crime monthly to the UCR program, and we do therefore make an effort to process monthly changes in a timely manner. However, occasionally due to the review and processing required for reclassifying, unfounding or clearing cases, the current month's totals may reflect the processing of a backlog of these changes from previous months.

Users of the data are cautioned that conclusions about substantial changes in crime trends or in clearance rates based on only a single month's data or trend may reflect some of these adjustments. For this reason, in addition to the monthly and year-to-date trends on Page 1, the monthly report routinely includes a comparison for the previous 12 months (p. 4), as well as graphs that provide seasonal/monthly comparisons over a five-year period (p. 5-8).

We do make an effort to present the most accurate information available at the time this report is published. However, errors in compiling the data and charts do sometimes occur, so please notify the Research, Planning, and Analysis office if you have any questions about the data in this report.

The new division names are used in this report. For ease of use, they also include the old district designations in parentheses.

V. L. Sorban
Research, Planning & Analysis Bureau