

**CHARLOTTE-MECKLENBURG POLICE DEPARTMENT
MONTHLY SUMMARY REPORT
MARCH, 2004**

**Darrel Stephens
Chief of Police**

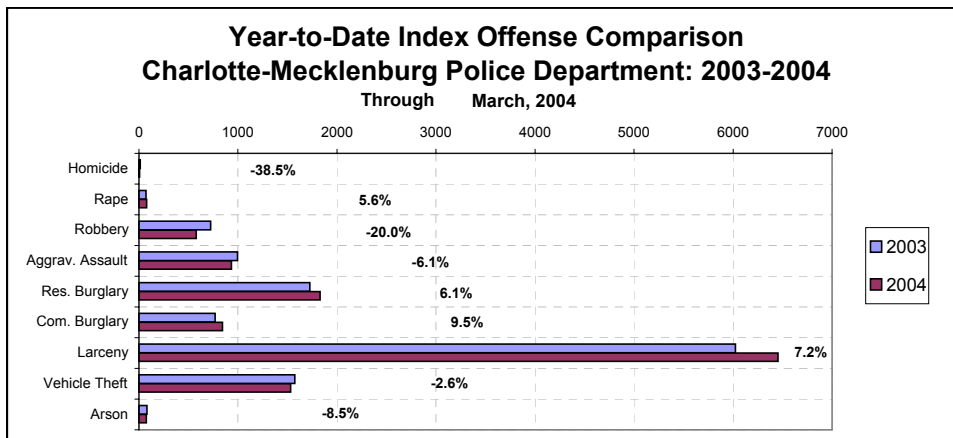
INDEX OFFENSES REPORTED TO CHARLOTTE-MECKLENBURG POLICE DEPARTMENT

March, 2004 INDEX OFFENSES	# THIS MONTH	% OF ALL INDEX	# LAST MONTH	MONTHLY % CHANGE	SAME MONTH LAST YEAR	MONTHLY % CHANGE	THIS YEAR TO DATE	LAST YEAR TO DATE	ANNUAL % CHANGE
HOMICIDE (MURDER & NON-NEGLIGENT MANSLAUGHTER)	4	0.1%	1	300.0%	6	-33.3%	8	13	-38.5%
RAPE TOTAL	24	0.5%	21	14.3%	27	-11.1%	76	72	5.6%
ACTUAL	24	0.5%	19	26.3%	26	-7.7%	72	68	5.9%
ATTEMPT	0	0.0%	2	-100.0%	1	-100.0%	4	4	0.0%
ROBBERY TOTAL	186	4.1%	150	24.0%	221	-15.8%	579	724	-20.0%
ARMED	129	2.8%	111	16.2%	174	-25.9%	430	561	-23.4%
STRONG-ARM	57	1.3%	39	46.2%	47	21.3%	149	163	-8.6%
AGGRAVATED ASSAULT TOTAL	371	8.1%	239	55.2%	352	5.4%	933	994	-6.1%
BURGLARY TOTAL	967	21.2%	738	31.0%	912	6.0%	2672	2494	7.1%
RESIDENTIAL	669	14.7%	512	30.7%	629	6.4%	1830	1725	6.1%
COMMERCIAL	298	6.5%	226	31.9%	283	5.3%	842	769	9.5%

FORCE	782	17.1%	556	40.6%	736	6.3%	2121	2030	4.5%
NO FORCE	131	2.9%	122	7.4%	103	27.2%	376	303	24.1%
ATTEMPT	54	1.2%	60	-10.0%	73	-26.0%	175	161	8.7%
LARCENY TOTAL	2472	54.2%	1891	30.7%	2111	17.1%	6455	6024	7.2%
\$200 AND OVER	1163	25.5%	923	26.0%	973	19.5%	3097	2945	5.2%
\$50 TO \$200	447	9.8%	343	30.3%	432	3.5%	1170	1102	6.2%
UNDER \$50	862	18.9%	625	37.9%	706	22.1%	2188	1977	10.7%

FROM AUTO	1244	27.3%	982	26.7%	1109	12.2%	3296	3155	4.5%
BICYCLE	20	0.4%	2	900.0%	12	66.7%	40	23	73.9%
SHOPLIFTING	293	6.4%	181	61.9%	243	20.6%	719	647	11.1%
OTHERS	915	20.1%	726	26.0%	747	22.5%	2400	2199	9.1%
VEHICLE THEFT TOTAL	508	11.1%	462	10.0%	509	-0.2%	1532	1573	-2.6%
ARSON TOTAL	28	0.6%	21	33.3%	20	40.0%	75	82	-8.5%
TOTALS	4560	100.0%	3523	29.4%	4158	9.7%	12330	11976	3.0%
VIOLENT PROPERTY	585	12.8%	411	42.3%	606	-3.5%	1596	1803	-11.5%
PROPERTY	3975	87.2%	3112	27.7%	3552	11.9%	10734	10173	5.5%

NOTE: These totals include offenses reported to the Charlotte-Mecklenburg Police Department in accordance with the Uniform Crime Reporting Program. Totals for homicide do not include cases investigated by the police but classed by UCR guidelines as negligent manslaughter or as "justifiable homicide."



INDEX CLEARANCES REPORTED BY THE CHARLOTTE-MECKLENBURG POLICE DEPARTMENT

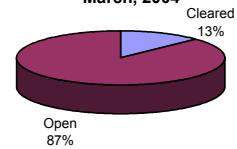
March, 2004 INDEX CLEARANCES	THIS MONTH:		LAST MONTH:		SAME MO. LAST YR:		THIS YEAR TO DATE:		LAST YEAR TO DATE:	
	NO.	%	NO.	%	NO.	%	NO.	%	NO.	%
MURDER & NON-NEGLIGENT MANSLAUGHTER	4	100.0%	0	0.0%	3	50.0%	5	62.5%	8	61.5%
RAPE TOTAL	27	112.5%	4	19.0%	16	59.3%	61	80.3%	38	52.8%
ACTUAL	23	95.8%	4	21.1%	16	61.5%	55	76.4%	36	52.9%
ATTEMPT	4	#DIV/0!	0	0.0%	0	0.0%	6	150.0%	2	50.0%
ROBBERY TOTAL	90	48.4%	24	16.0%	32	14.5%	211	36.4%	120	16.6%
ARMED	68	52.7%	11	9.9%	21	12.1%	151	35.1%	79	14.1%
STRONG-ARM	22	38.6%	13	33.3%	11	23.4%	60	40.3%	41	25.2%
AGGRAVATED ASSAULT TOTAL	242	65.2%	105	43.9%	174	49.4%	560	60.0%	498	50.1%
BURGLARY TOTAL	60	6.2%	58	7.9%	120	13.2%	276	10.3%	235	9.4%
RESIDENTIAL	48	7.2%	456	89.1%	65	10.3%	630	34.4%	152	8.8%
COMMERCIAL	12	4.0%	2	0.9%	55	19.4%	46	5.5%	83	10.8%
LARCENY TOTAL	237	9.6%	171	9.0%	274	13.0%	809	12.5%	753	12.5%
FROM AUTO	26	2.1%	24	2.4%	39	3.5%	89	2.7%	100	3.2%
BICYCLE	0	0.0%	0	0.0%	1	8.3%	3	7.5%	4	17.4%
SHOPLIFTING	166	56.7%	85	47.0%	118	48.6%	387	53.8%	355	54.9%
OTHERS	45	4.9%	62	8.5%	116	15.5%	330	13.8%	294	13.4%
VEHICLE THEFT TOTAL	83	16.3%	90	19.5%	91	17.9%	280	18.3%	277	17.6%
ARSON TOTAL	6	21.4%	5	23.8%	9	45.0%	20	26.7%	31	37.8%
TOTALS	749	16.4%	457	13.0%	719	17.3%	2222	18.0%	1960	16.4%
VIOLENT PROPERTY	363	62.1%	133	32.4%	225	37.1%	837	52.4%	664	36.8%
	386	9.7%	324	10.4%	494	13.9%	1385	12.9%	1296	12.7%

NOTE: Clearances are reported in accordance with Uniform Crime Report guidelines. Since clearances are not counted until they are entered into the Records system, any delays in processing may result in some clearances being reported in succeeding months.

**Year-to-Date Violent Index Clearance Rate
Charlotte-Mecklenburg Police Department: 2004
March, 2004**

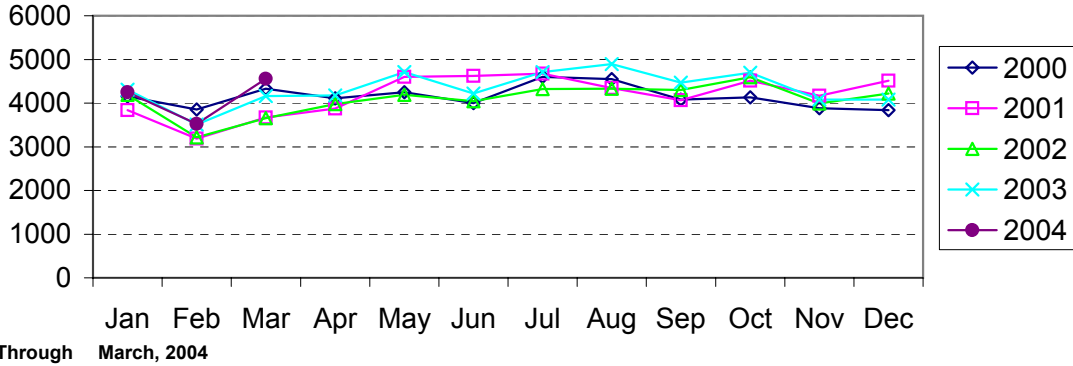


**Year-to-Date Property Index Clearance Rate
Charlotte-Mecklenburg Police Department: 2004
March, 2004**

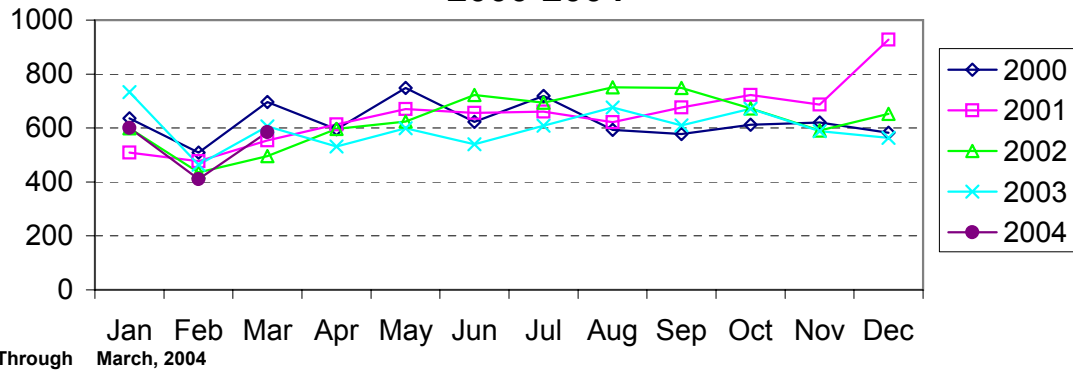


Clearance rates for crime reporting are calculated by dividing the number of crimes cleared during a designated time span by the number of crimes reported in the same period and converting the result to a percentage (multiplying by 100). Since cases from previous reporting periods can be cleared during the designated time span, the rate may be higher than 100%.

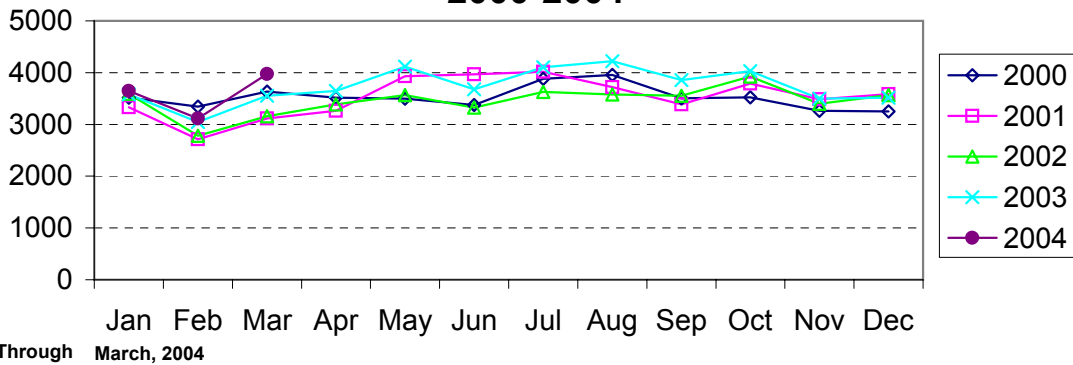
Index Offenses Reported by Month Charlotte-Mecklenburg Police Department: 2000-2004



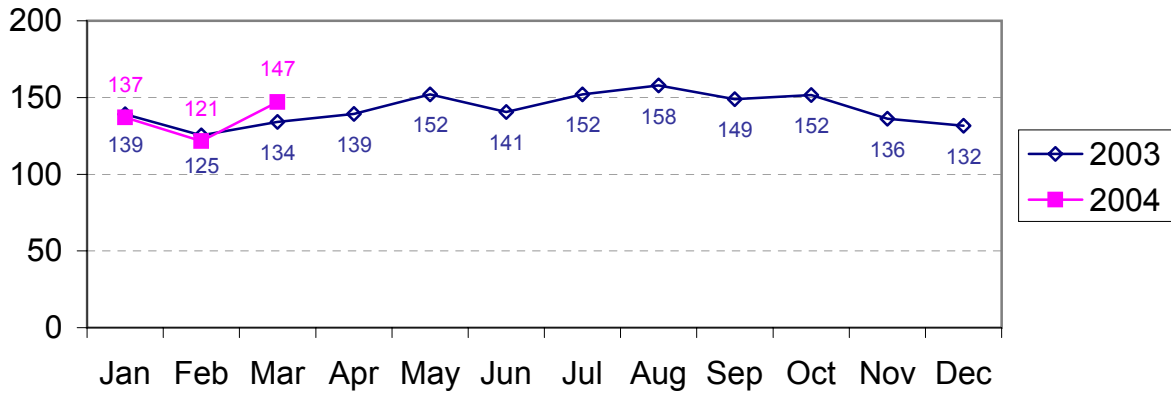
Violent Index Offenses Reported by Month Charlotte-Mecklenburg Police Department: 2000-2004



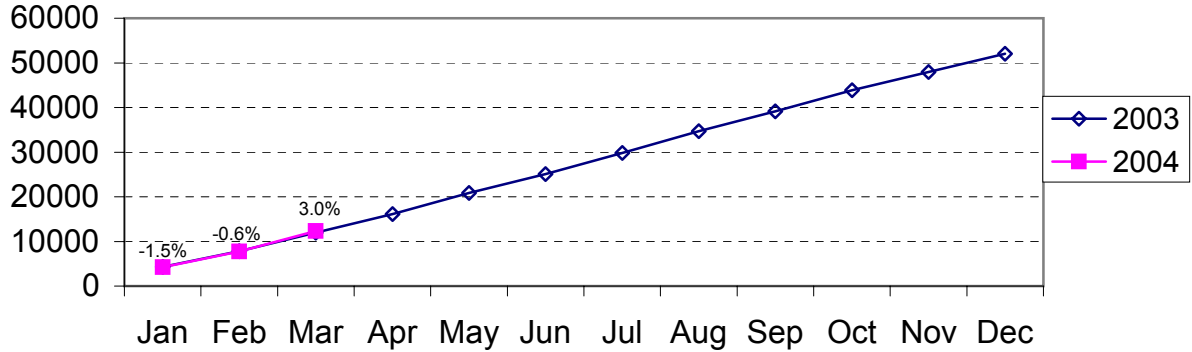
Property Index Offenses Reported by Month Charlotte-Mecklenburg Police Department: 2000-2004



Index Offense Per Day Average by Month Charlotte-Mecklenburg Police Department: 2003-2004

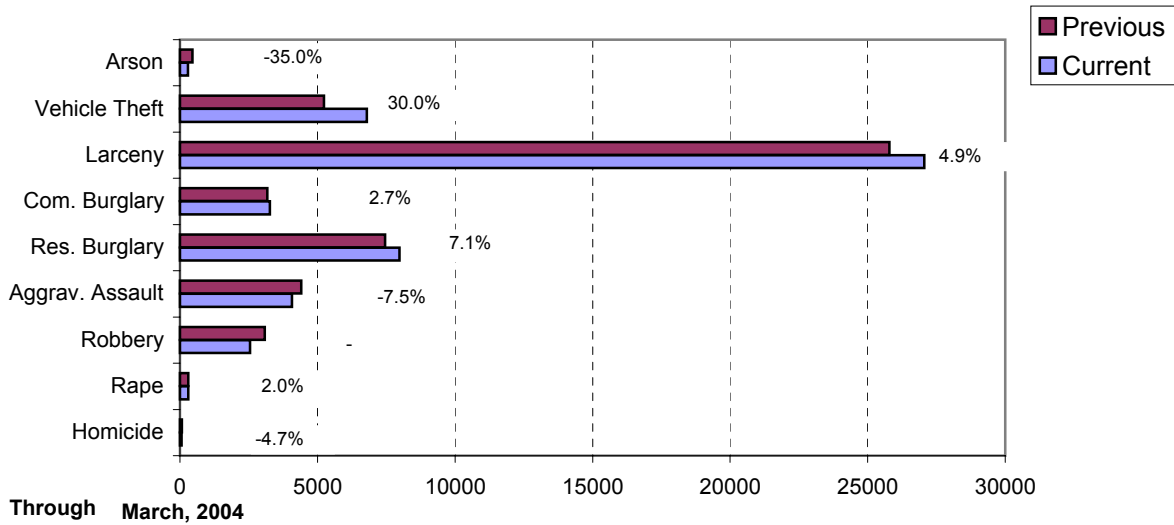


Index Offenses Year-to-Date Cumulative Totals Charlotte-Mecklenburg Police Department: 2002-2003

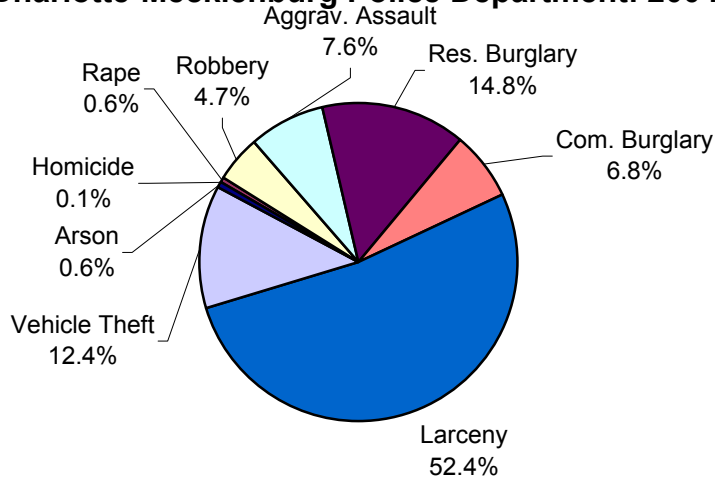


Through March, 2004

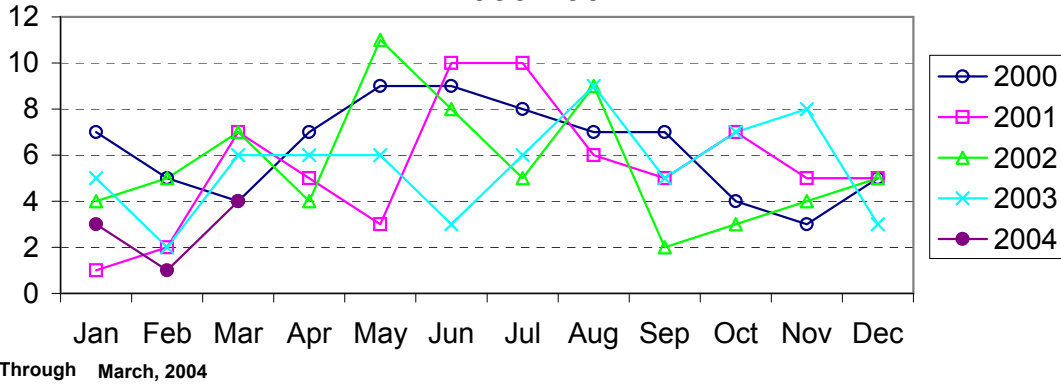
Index Offenses in Current and Previous 12 Months Charlotte-Mecklenburg Police Department: 2003-2004



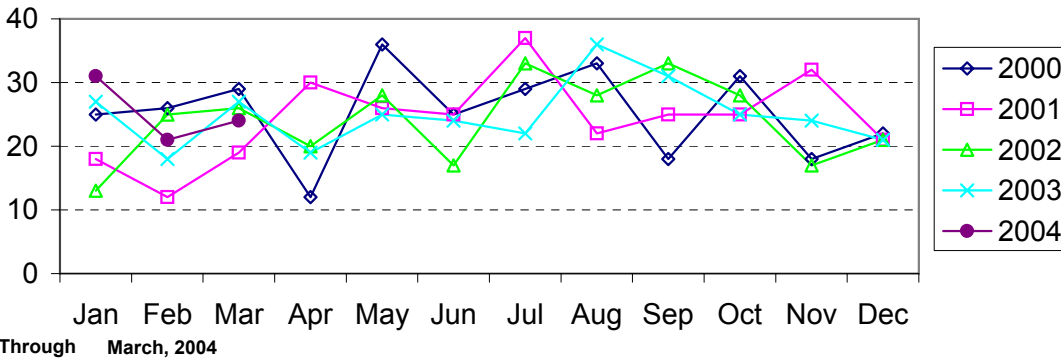
Year-to-Date Index Offenses by Type Charlotte-Mecklenburg Police Department: 2004



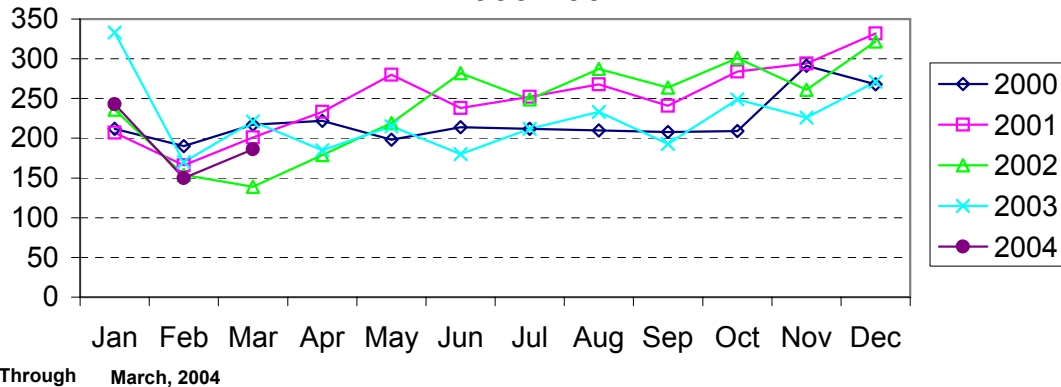
Homicide Reported by Month Charlotte-Mecklenburg Police Department: 2000-2004



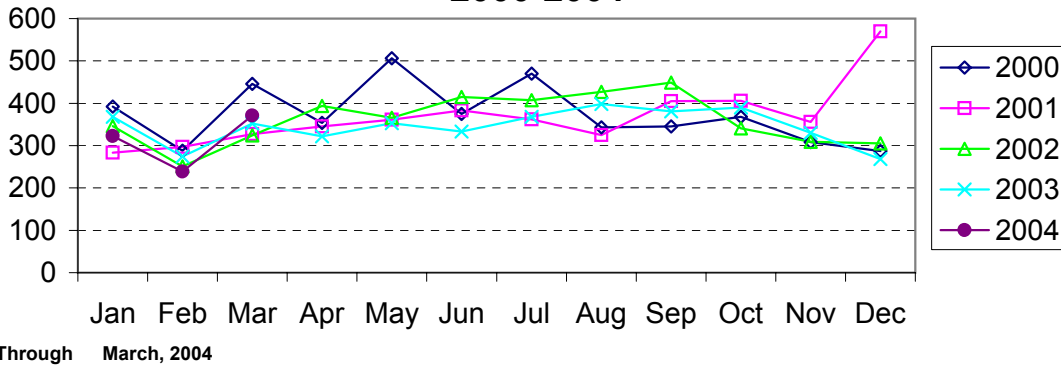
Rape Reported by Month Charlotte-Mecklenburg Police Department: 2000-2004



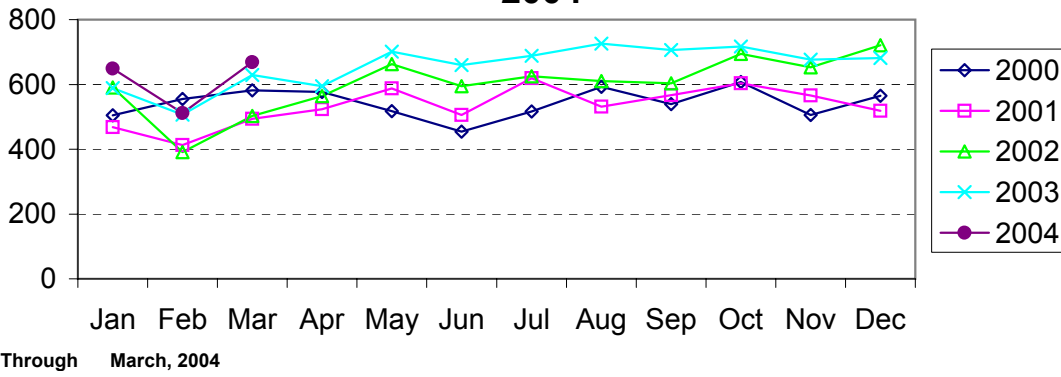
Robbery Reported by Month Charlotte-Mecklenburg Police Department: 2000-2004



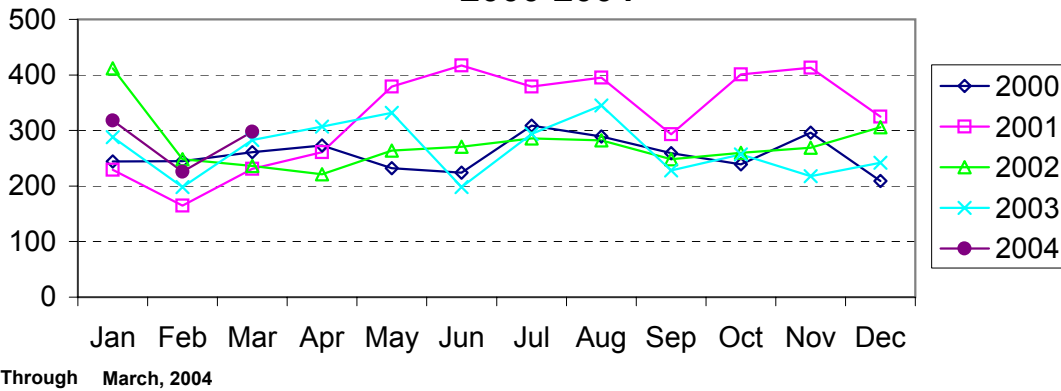
Aggravated Assault Reported by Month Charlotte-Mecklenburg Police Department: 2000-2004



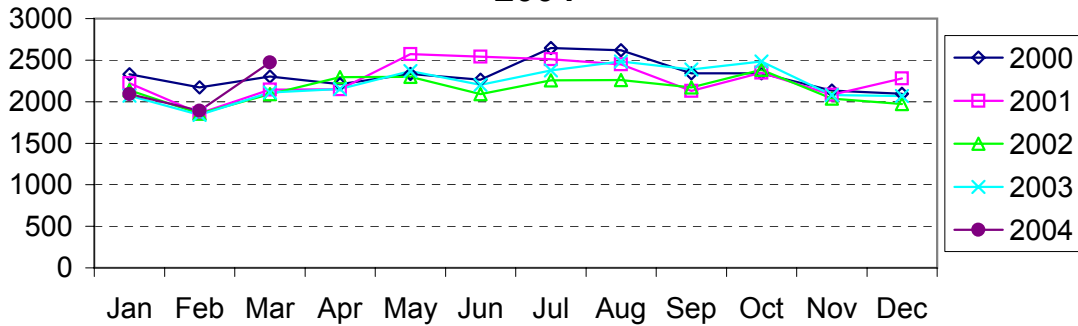
Residential Burglary Reported by Month Charlotte-Mecklenburg Police Department: 2000- 2004



Commercial Burglary Reported by Month Charlotte-Mecklenburg Police Department: 2000-2004

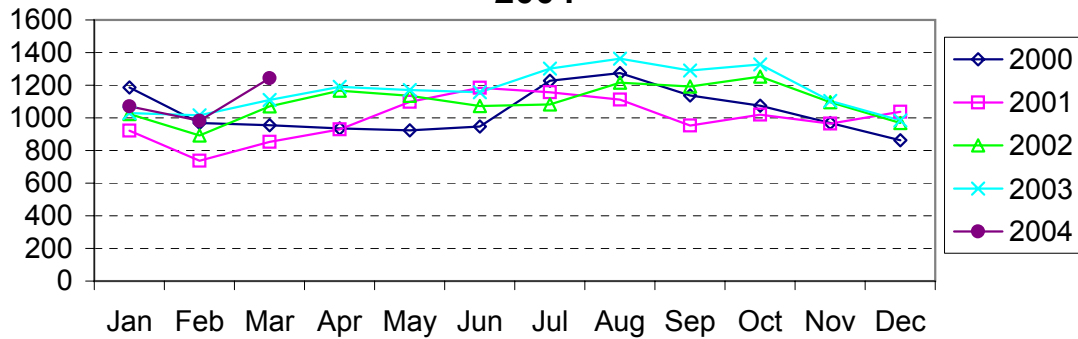


Larceny Reported by Month Charlotte-Mecklenburg Police Department: 2000-2004



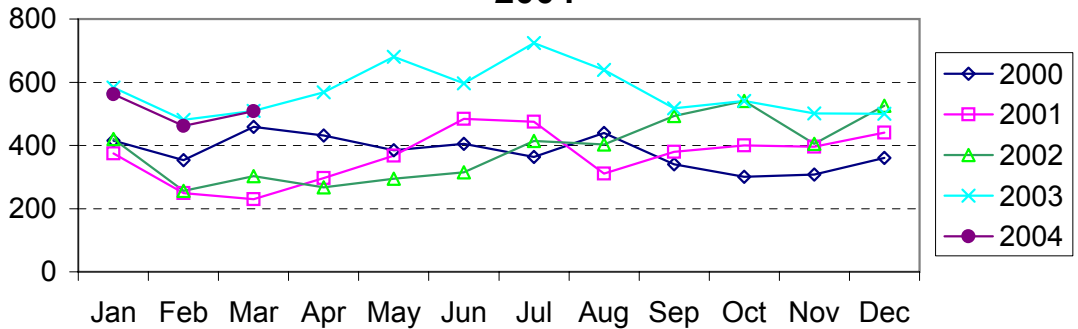
Through March, 2004

Larceny from Vehicle Reported by Month Charlotte-Mecklenburg Police Department: 2000-2004



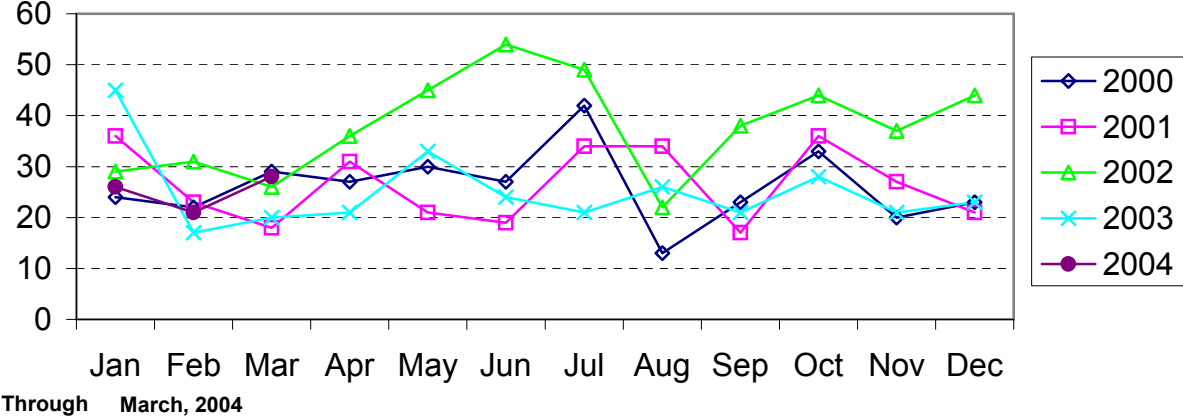
Through March, 2004

Vehicle Theft Reported by Month Charlotte-Mecklenburg Police Department: 2000-2004



Through March, 2004

Arson Reported by Month Charlotte-Mecklenburg Police Department: 2000-2004



Index Offenses Reported by Division and Service Area of Occurrence									
West Service Area: Jan-Mar, 2003-2004									
INDEX_CATEGORIES	Westover (A2)			Freedom (A3)			West Service Area		
	2003	2004	% Change	2003	2004	% Change	2003	2004	% Change
MURDER & NON-NEGLIGENT MANSLAUGHTER	1	0	-100.0%	1	0	-100.0%	2	0	-100.0%
RAPE	5	6	20.0%	9	3	-66.7%	14	9	-35.7%
ACTUAL	5	6	20.0%	9	3	-66.7%	14	9	-35.7%
ATTEMPTED	0	0	NA	0	0	NA	0	0	NA
ROBBERY	64	48	-25.0%	63	72	14.3%	127	120	-5.5%
ARMED	47	38	-19.1%	43	55	27.9%	90	93	3.3%
STRONG-ARM	17	10	-41.2%	20	17	-15.0%	37	27	-27.0%
AGGRAVATED ASSAULT	105	61	-41.9%	135	99	-26.7%	240	160	-33.3%
BURGLARY	193	201	4.1%	324	296	-8.6%	517	497	-3.9%
RESIDENTIAL	138	121	-12.3%	193	209	8.3%	331	330	-0.3%
COMMERCIAL	55	80	45.5%	131	87	-33.6%	186	167	-10.2%
LARCENY	348	398	14.4%	502	602	19.9%	850	1000	17.6%
FROM AUTO	178	191	7.3%	240	287	19.6%	418	478	14.4%
BICYCLE	2	4	100.0%	2	3	50.0%	4	7	75.0%
SHOPLIFTING	39	52	33.3%	45	78	73.3%	84	130	54.8%
OTHERS	129	151	17.1%	215	234	8.8%	344	385	11.9%
VEHICLE THEFT	106	93	-12.3%	168	179	6.5%	274	272	-0.7%
ARSON	6	9	50.0%	12	13	8.3%	18	22	22.2%
TOTALS	828	816	-1.4%	1214	1264	4.1%	2042	2080	1.9%
VIOLENT	175	115	-34.3%	208	174	-16.3%	383	289	-24.5%
PROPERTY	653	701	7.4%	1006	1090	8.3%	1659	1791	8.0%

Index Offenses Reported by Division and Service Area of Occurrence									
Southeast Service Area: Jan-Mar, 2003-2004									
INDEX_CATEGORIES	Providence (B1)			Independence (B3)			Southeast Service Area		
	2003	2004	% Change	2003	2004	% Change	2003	2004	% Change
MURDER & NON-NEGLIGENT MANSLAUGHTER	0	0	NA	2	1	-50.0%	2	1	-50.0%
RAPE	5	6	20.0%	7	4	-42.9%	12	10	-16.7%
ACTUAL	5	6	20.0%	7	4	-42.9%	12	10	-16.7%
ATTEMPTED	0	0	NA	0	0	NA	0	0	NA
ROBBERY	37	33	-10.8%	72	52	-27.8%	109	85	-22.0%
ARMED	29	24	-17.2%	63	39	-38.1%	92	63	-31.5%
STRONG-ARM	8	9	12.5%	10	13	30.0%	18	22	22.2%
AGGRAVATED ASSAULT	49	51	4.1%	73	78	6.8%	122	129	5.7%
BURGLARY	213	238	11.7%	206	272	32.0%	419	510	21.7%
RESIDENTIAL	127	127	0.0%	165	203	23.0%	292	330	13.0%
COMMERCIAL	86	111	29.1%	41	69	68.3%	127	180	41.7%
LARCENY	415	448	8.0%	643	551	-14.3%	1058	999	-5.6%
FROM AUTO	210	215	2.4%	356	323	-9.3%	566	538	-4.9%
BICYCLE	1	2	100.0%	4	2	-50.0%	5	4	-20.0%
SHOPLIFTING	50	39	-22.0%	62	44	-29.0%	112	83	-25.9%
OTHERS	154	192	24.7%	221	182	-17.6%	375	374	-0.3%
VEHICLE THEFT	86	78	-9.3%	170	175	2.9%	256	253	-1.2%
ARSON	2	5	150.0%	8	8	0.0%	10	13	30.0%
TOTALS	807	859	6.4%	1181	1141	-3.4%	1988	2000	0.6%
VIOLENT	91	90	-1.1%	154	135	-12.3%	245	225	-8.2%
PROPERTY	716	769	7.4%	1027	1006	-2.0%	1743	1775	1.8%

The data in the district breakdowns does not include a small number of offenses in which the location of the offense was unknown or was entered without a valid tract assignment. Districts are not equal in geographic size, demographics, zoning/development, and other factors that influence the rate of crimes committed in an area. Therefore, the comparison of raw offense totals across districts is not advisable.

Index Offenses Reported by Division and Service Area of Occurrence									
Northeast Service Area: Jan-Mar, 2003-2004									
INDEX_CATEGORIES	North (C1)			Hickory Grove (C3)			Northeast Service Area		
	2003	2004	% Change	2003	2004	% Change	2003	2004	% Change
MURDER & NON-NEGLIGENT MANSLAUGHTER	1	0	-100.0%	3	1	-66.7%	4	1	-75.0%
RAPE	9	13	44.4%	7	6	-14.3%	16	19	18.8%
ACTUAL	8	12	50.0%	6	6	0.0%	14	18	28.6%
ATTEMPTED	1	1	0.0%	1	0	-100.0%	2	1	-50.0%
ROBBERY	47	48	2.1%	57	56	-1.8%	104	104	0.0%
ARMED	39	38	-2.6%	49	42	-14.3%	88	80	-9.1%
STRONG-ARM	8	10	25.0%	8	14	75.0%	16	24	50.0%
AGGRAVATED ASSAULT	78	92	17.9%	84	113	34.5%	162	205	26.5%
BURGLARY	282	295	4.6%	251	278	10.8%	533	573	7.5%
RESIDENTIAL	185	212	14.6%	196	198	1.0%	381	410	7.6%
COMMERCIAL	97	83	-14.4%	55	80	45.5%	152	163	7.2%
LARCENY	841	975	15.9%	524	489	-6.7%	1365	1464	7.3%
FROM AUTO	519	566	9.1%	268	246	-8.2%	787	812	3.2%
BICYCLE	2	7	250.0%	3	7	133.3%	5	14	180.0%
SHOPLIFTING	80	93	16.3%	59	38	-35.6%	139	131	-5.8%
OTHERS	240	309	28.8%	194	198	2.1%	434	507	16.8%
VEHICLE THEFT	159	175	10.1%	203	153	-24.6%	362	328	-9.4%
ARSON	10	5	-50.0%	13	6	-53.8%	23	11	-52.2%
TOTALS	1427	1603	12.3%	1142	1102	-3.5%	2569	2705	5.3%
VIOLENT	135	153	13.3%	151	176	16.6%	286	329	15.0%
PROPERTY	1292	1450	12.2%	991	926	-6.6%	2283	2376	4.1%

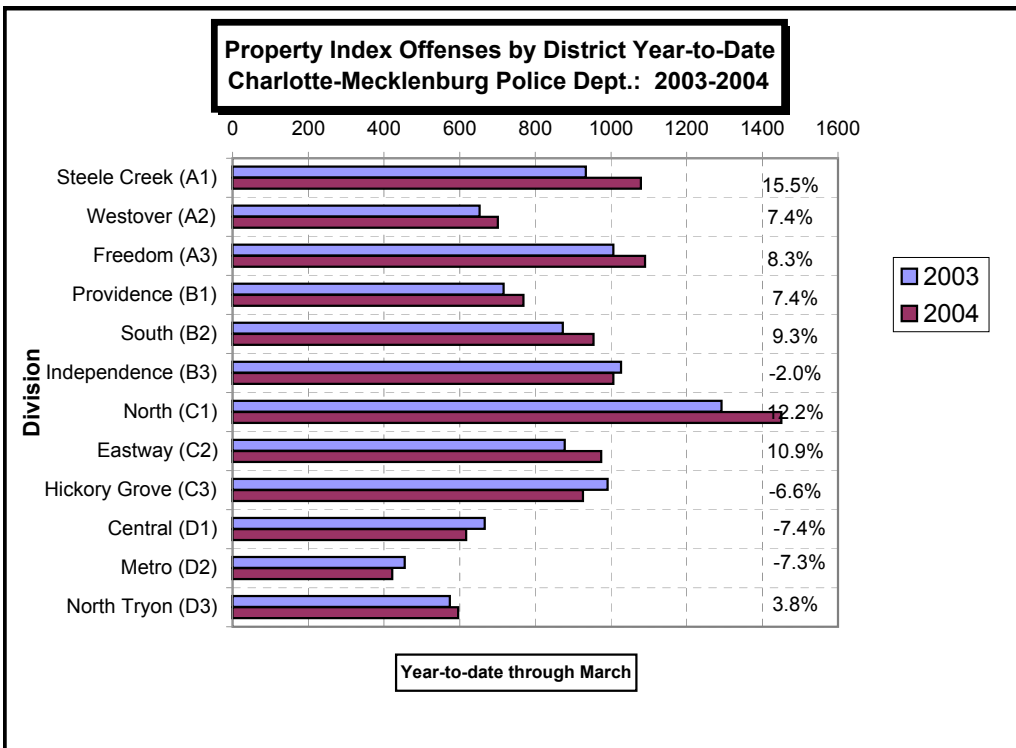
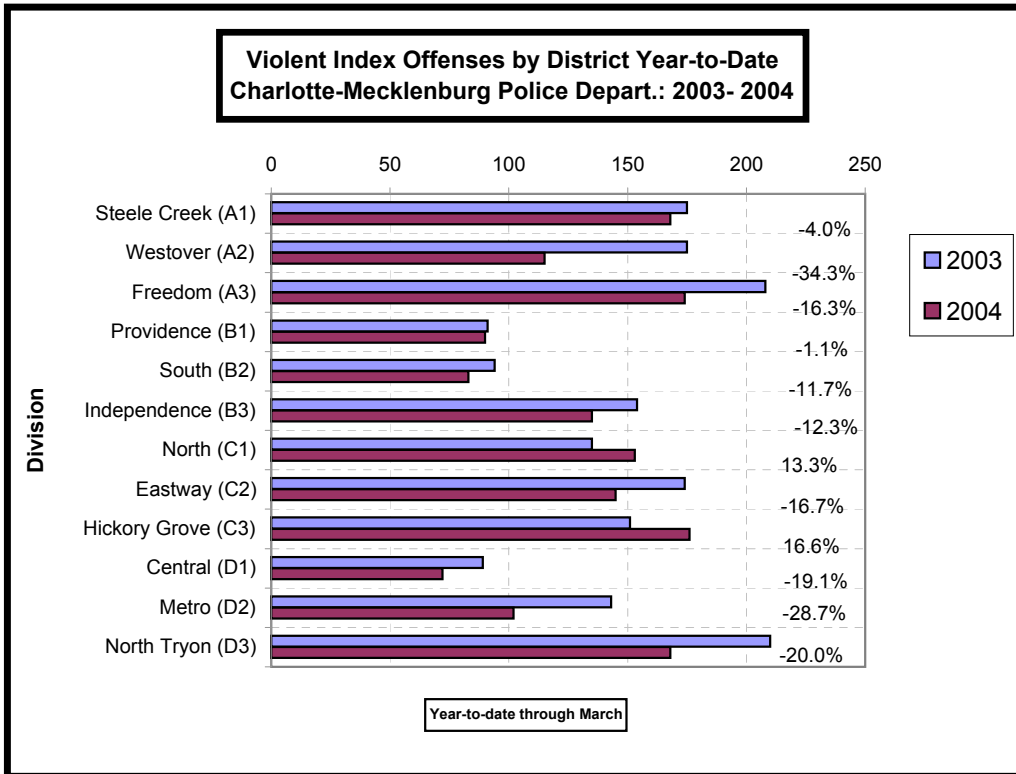
Index Offenses Reported by Division and Service Area of Occurrence									
Central Service Area: Jan-Mar, 2003-2004									
INDEX_CATEGORIES	Central (D1)			Metro (D2)			Central Service Area		
	2003	2004	% Change	2003	2004	% Change	2003	2004	% Change
MURDER & NON-NEGLIGENT MANSLAUGHTER	2	0	-100.0%	1	0	-100.0%	3	0	-100.0%
RAPE	4	4	0.0%	8	9	12.5%	12	13	8.3%
ACTUAL	4	3	-25.0%	7	9	28.6%	11	12	9.1%
ATTEMPTED	0	1	NA	1	0	-100.0%	1	1	0.0%
ROBBERY	25	31	24.0%	50	37	-26.0%	75	68	-9.3%
ARMED	13	17	30.8%	35	32	-8.6%	48	49	2.1%
STRONG-ARM	12	14	16.7%	15	5	-66.7%	27	19	-29.6%
AGGRAVATED ASSAULT	58	37	-36.2%	84	56	-33.3%	142	93	-34.5%
BURGLARY	102	88	-13.7%	144	120	-16.7%	246	208	-15.4%
RESIDENTIAL	47	33	-29.8%	106	90	-15.1%	153	123	-19.6%
COMMERCIAL	55	55	0.0%	38	30	-21.1%	93	85	-8.6%
LARCENY	438	455	3.9%	221	225	1.8%	659	680	3.2%
FROM AUTO	220	242	10.0%	115	95	-17.4%	335	337	0.6%
BICYCLE	0	3	NA	1	1	0.0%	1	4	300.0%
SHOPLIFTING	16	17	6.3%	7	19	171.4%	23	36	56.5%
OTHERS	202	193	-4.5%	98	110	12.2%	300	303	1.0%
VEHICLE THEFT	124	73	-41.1%	83	73	-12.0%	207	146	-29.5%
ARSON	2	1	-50.0%	7	4	-42.9%	9	5	-44.4%
TOTALS	755	689	-8.7%	598	524	-12.4%	1353	1213	-10.3%
VIOLENT	89	72	-19.1%	143	102	-28.7%	232	174	-25.0%
PROPERTY	666	617	-7.4%	455	422	-7.3%	1121	1039	-7.3%

The data in the district breakdowns does not include a small number of offenses in which the location of the offense was unknown or was entered without a valid tract assignment. Districts are not equal in geographic size, demographics, zoning/development, and other factors that influence the rate of crimes committed in an area. Therefore, the comparison of raw offense totals across districts is not advisable.

Index Offenses Reported by Division and Service Area of Occurrence									
East Service Area: Jan-Mar, 2003-2004									
INDEX_CATEGORIES	Eastway (C2)			North Tryon (D3)			East Service Area		
	2003	2004	% Change	2003	2004	% Change	2003	2004	% Change
MURDER & NON-NEGLIGENT MANSLAUGHTER	0	1	NA	1	2	100.0%	1	3	200.0%
RAPE	1	2	100.0%	6	7	16.7%	7	9	28.6%
ACTUAL	1	2	100.0%	6	6	0.0%	7	8	14.3%
ATTEMPTED	0	0	NA	0	1	NA	0	1	NA
ROBBERY	95	64	-32.6%	88	54	-38.6%	183	118	-35.5%
ARMED	78	41	-47.4%	74	40	-45.9%	152	81	-46.7%
STRONG-ARM	17	23	35.3%	14	14	0.0%	31	37	19.4%
AGGRAVATED ASSAULT	78	78	0.0%	115	105	-8.7%	193	183	-5.2%
BURGLARY	208	254	22.1%	153	166	8.5%	361	420	16.3%
RESIDENTIAL	156	161	3.2%	111	119	7.2%	267	280	4.9%
COMMERCIAL	52	93	78.8%	42	47	11.9%	94	140	48.9%
LARCENY	549	580	5.6%	284	316	11.3%	833	896	7.6%
FROM AUTO	270	224	-17.0%	159	160	0.6%	429	384	-10.5%
BICYCLE	5	3	-40.0%	0	3	NA	5	6	20.0%
SHOPLIFTING	109	158	45.0%	19	22	15.8%	128	180	40.6%
OTHERS	165	195	18.2%	106	131	23.6%	271	326	20.3%
VEHICLE THEFT	116	135	16.4%	134	112	-16.4%	250	247	-1.2%
ARSON	5	5	0.0%	3	2	-33.3%	8	7	-12.5%
TOTALS	1052	1119	6.4%	784	764	-2.6%	1836	1883	2.6%
VIOLENT	174	145	-16.7%	210	168	-20.0%	384	313	-18.5%
PROPERTY	878	974	10.9%	574	596	3.8%	1452	1570	8.1%

Index Offenses Reported by Division and Service Area of Occurrence									
South Service Area: Jan-Mar, 2003-2004									
INDEX_CATEGORIES	Steele Creek (A1)			South (B2)			South Service Area		
	2003	2004	% Change	2003	2004	% Change	2003	2004	% Change
MURDER & NON-NEGLIGENT MANSLAUGHTER	1	3	200.0%	0	0	NA	1	3	200.0%
RAPE	6	8	33.3%	5	7	40.0%	11	15	36.4%
ACTUAL	6	7	16.7%	4	7	75.0%	10	14	40.0%
ATTEMPTED	0	1	NA	1	0	-100.0%	1	1	0.0%
ROBBERY	88	47	-46.6%	37	33	-10.8%	125	80	-36.0%
ARMED	56	38	-32.1%	25	24	-4.0%	81	62	-23.5%
STRONG-ARM	22	9	-59.1%	12	9	-25.0%	34	18	-47.1%
AGGRAVATED ASSAULT	80	110	37.5%	52	43	-17.3%	132	153	15.9%
BURGLARY	173	222	28.3%	220	210	-4.5%	393	432	9.9%
RESIDENTIAL	114	172	50.9%	171	169	-1.2%	285	341	19.6%
COMMERCIAL	59	50	-15.3%	49	41	-16.3%	108	91	-15.7%
LARCENY	634	684	7.9%	558	642	15.1%	1192	1326	11.2%
FROM AUTO	282	344	22.0%	303	356	17.5%	585	700	19.7%
BICYCLE	1	5	400.0%	2	0	-100.0%	3	5	66.7%
SHOPLIFTING	108	123	13.9%	47	36	-23.4%	155	159	2.6%
OTHERS	243	212	-12.8%	206	250	21.4%	449	462	2.9%
VEHICLE THEFT	124	164	32.3%	87	95	9.2%	211	259	22.7%
ARSON	3	9	200.0%	8	7	-12.5%	11	16	45.5%
TOTALS	1109	1247	12.4%	967	1037	7.2%	2076	2284	10.0%
VIOLENT	175	168	-4.0%	94	83	-11.7%	269	251	-6.7%
PROPERTY	934	1079	15.5%	873	954	9.3%	1807	2033	12.5%

The data in the district breakdowns does not include a small number of offenses in which the location of the offense was unknown or was entered without a valid tract assignment. Districts are not equal in geographic size, demographics, zoning/development, and other factors that influence the rate of crimes committed in an area. Therefore, the comparison of raw offense totals across districts is not advisable.



The data in the district breakdowns does not include a small number of offenses in which the location of the offense was unknown or was entered without a valid tract assignment. Districts are not equal in geographic size, demographics, zoning/development, and other factors that influence the rate of crimes committed in an area. Therefore, the comparison of raw offense totals across districts is not advisable.

Arrests by Charlotte-Mecklenburg Police Department
Year-To-Date: 2003-2004
(Through March)

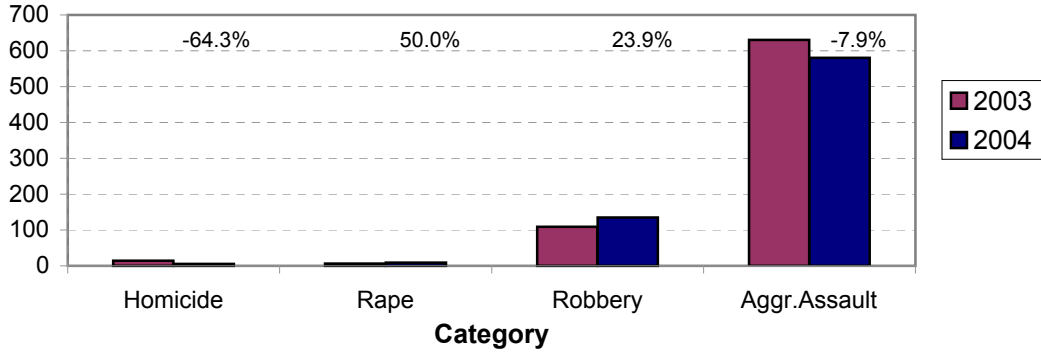
CATEGORY	ADULTS (AGE 18 & OLDER):			JUVENILES (UNDER 18):			TOTAL ARRESTS:		
	2003 Y-T-D	2004 Y-T-D	% CHANGE	2003 Y-T-D	2004 Y-T-D	% CHANGE	2003 Y-T-D	2004 Y-T-D	% CHANGE
Murder/Non-Negligent Manslaughter	13	5	-61.5%	1	0	-100.0%	14	5	-64.3%
Negligent & Vehicular Manslaughter	0	3	NA	0	0	NA	0	3	NA
Rape	6	8	33.3%	0	1	NA	6	9	50.0%
Robbery	82	90	9.8%	27	45	66.7%	109	135	23.9%
Aggravated Assault	521	478	-8.3%	109	102	-6.4%	630	580	-7.9%
Burglary	112	142	26.8%	50	39	-22.0%	162	181	11.7%
Larceny	335	372	11.0%	175	161	-8.0%	510	533	4.5%
Vehicle Theft	31	23	-25.8%	112	51	-54.5%	143	74	-48.3%
Non-Aggravated Assault	409	430	5.1%	234	239	2.1%	643	669	4.0%
Arson	10	3	-70.0%	8	6	-25.0%	18	9	-50.0%
Forgery/Counterfiet	24	28	16.7%	0	2	NA	24	30	25.0%
Fraud	114	145	27.2%	3	1	-66.7%	117	146	24.8%
Embezzlement	28	20	-28.6%	2	2	0.0%	30	22	-26.7%
Stolen Property	141	121	-14.2%	44	26	-40.9%	185	147	-20.5%
Vandalism	56	65	16.1%	43	48	11.6%	99	113	14.1%
Weapons	124	107	-13.7%	15	16	6.7%	139	123	-11.5%
Prostitution	37	59	59.5%	0	4	NA	37	63	70.3%
Sex Offenses	37	40	8.1%	10	3	-70.0%	47	43	-8.5%
Drugs	882	675	-23.5%	89	73	-18.0%	971	748	-23.0%
Gambling	4	4	0.0%	0	0	NA	4	4	0.0%
Offenses vs. Family	4	1	-75.0%	0	1	NA	4	2	-50.0%
DUI	492	466	-5.3%	1	3	200.0%	493	469	-4.9%
Liquor	41	53	29.3%	4	1	-75.0%	45	54	20.0%
Disorder Conduct	116	128	10.3%	96	101	5.2%	212	229	8.0%
Other Non-Traffic	1775	1869	5.3%	197	202	2.5%	1972	2071	5.0%
VIOLENT INDEX¹	622	581	-6.6%	137	148	8.0%	759	729	-4.0%
PROPERTY INDEX²	488	540	10.7%	345	257	-25.5%	833	797	-4.3%
INDEX SUBTOTAL	1110	1121	1.0%	482	405	-16.0%	1592	1526	-4.1%
PART 2 SUBTOTAL³	4284	4214	-1.6%	738	722	-2.2%	5022	4936	-1.7%
TOTAL	5394	5335	-1.1%	1220	1127	-7.6%	6614	6462	-2.3%

¹Violent Index includes murder and non-negligent manslaughter, rape, robbery, and aggravated assault.

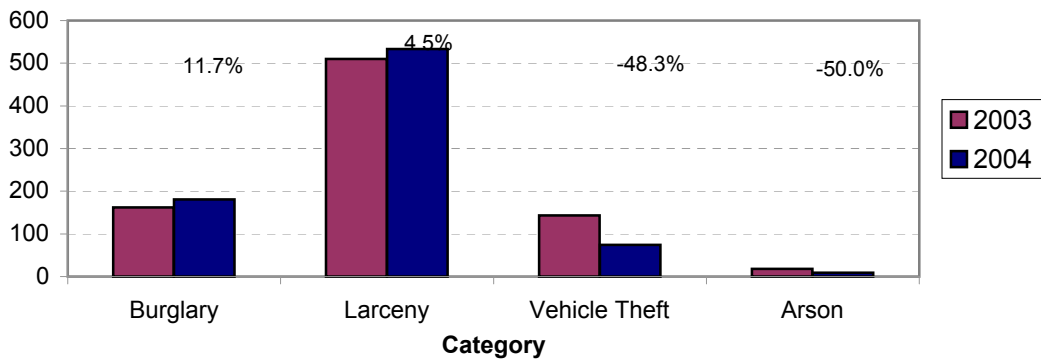
²Property Index includes burglary, larceny, vehicle theft, and arson.

³Part 2 crimes include non-traffic crimes not counted in the Index totals.

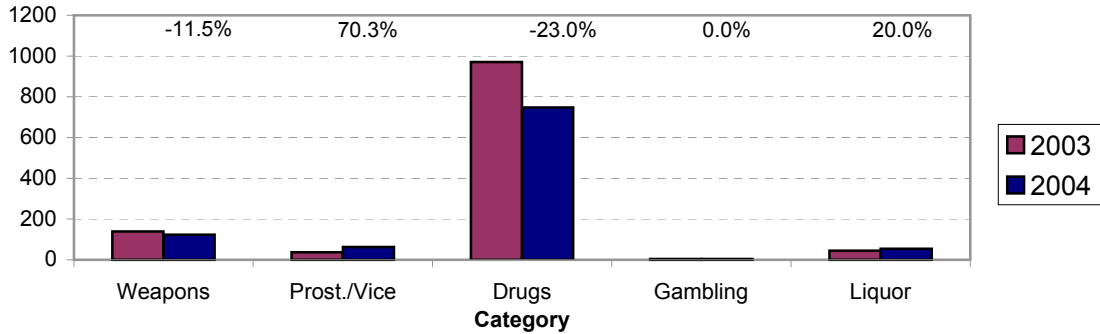
**Violent Index Arrests Year-to-Date
Charlotte-Mecklenburg Police Department: 2003-2004
(Through March)**



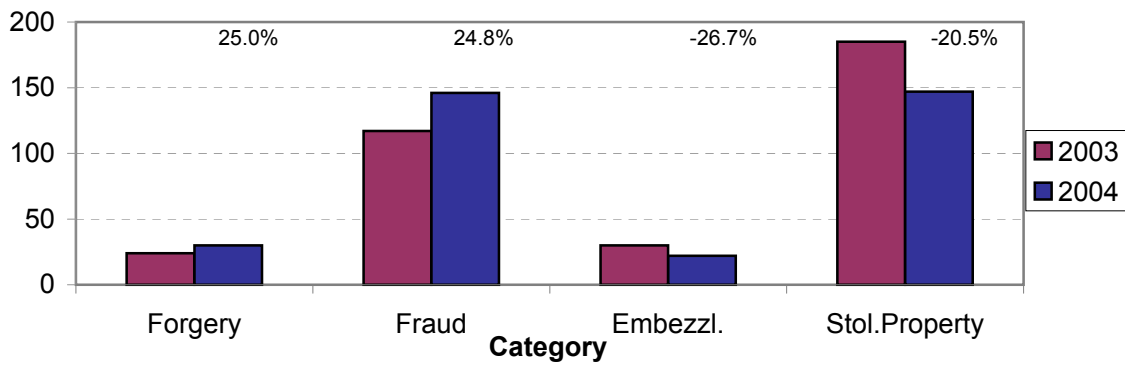
**Property Index Arrests Year-to-Date
Charlotte-Mecklenburg Police Department: 2003-2004
(Through March)**



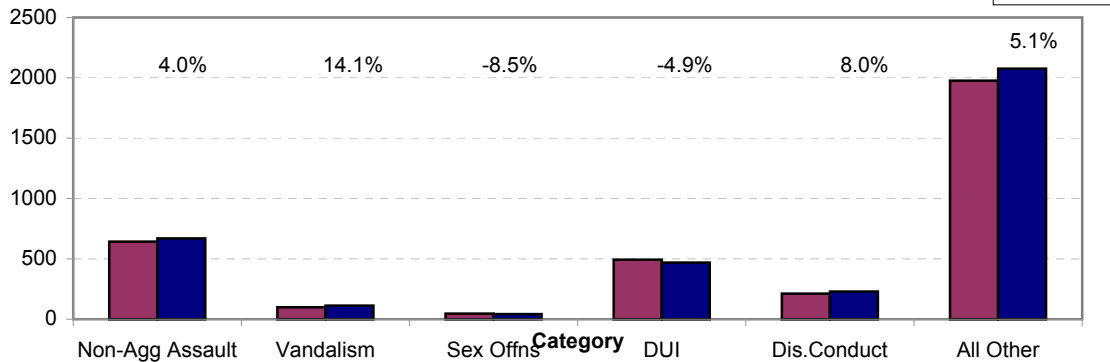
**Arrests for Vice/CCW/Drugs/Etc. Year-to-Date
Charlotte-Mecklenburg Police Department: 2003 - 2004
(Through March)**



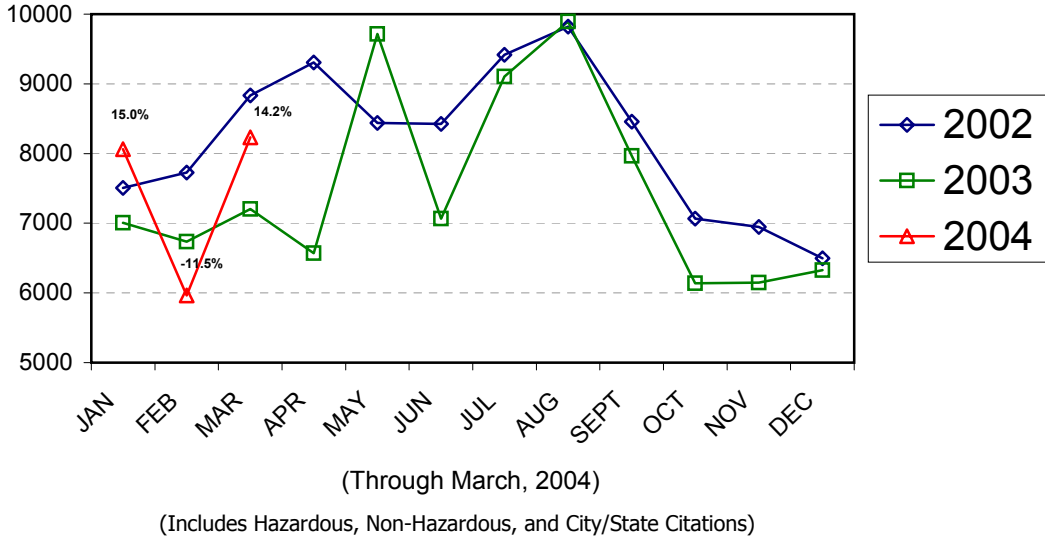
**Arrests for Property/White Collar Crime Year-to-Date
Charlotte-Mecklenburg Police Department: 2003 - 2004
(Through March)**



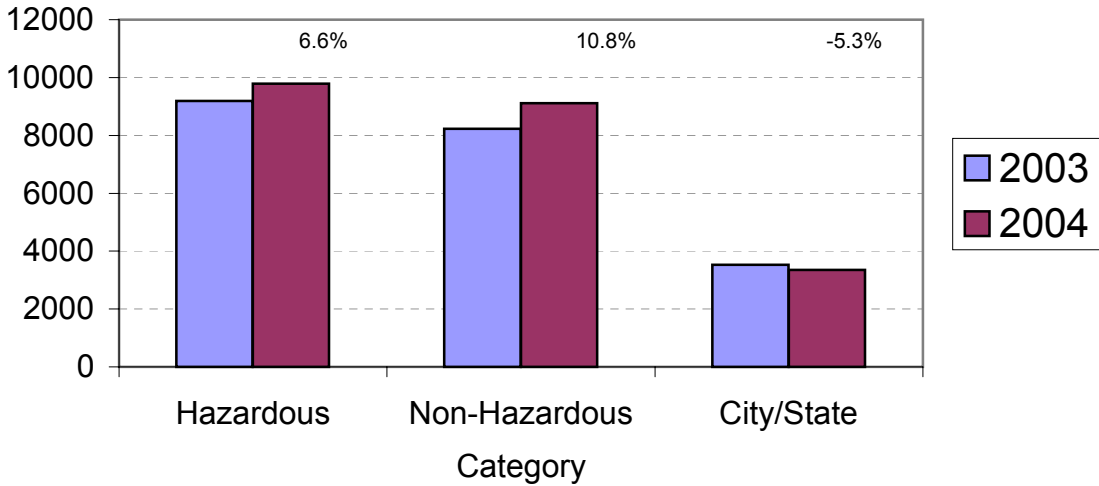
**Arrests for Other Categories Year-to-Date
Charlotte-Mecklenburg Police Department: 2003 - 2004
(Through March)**



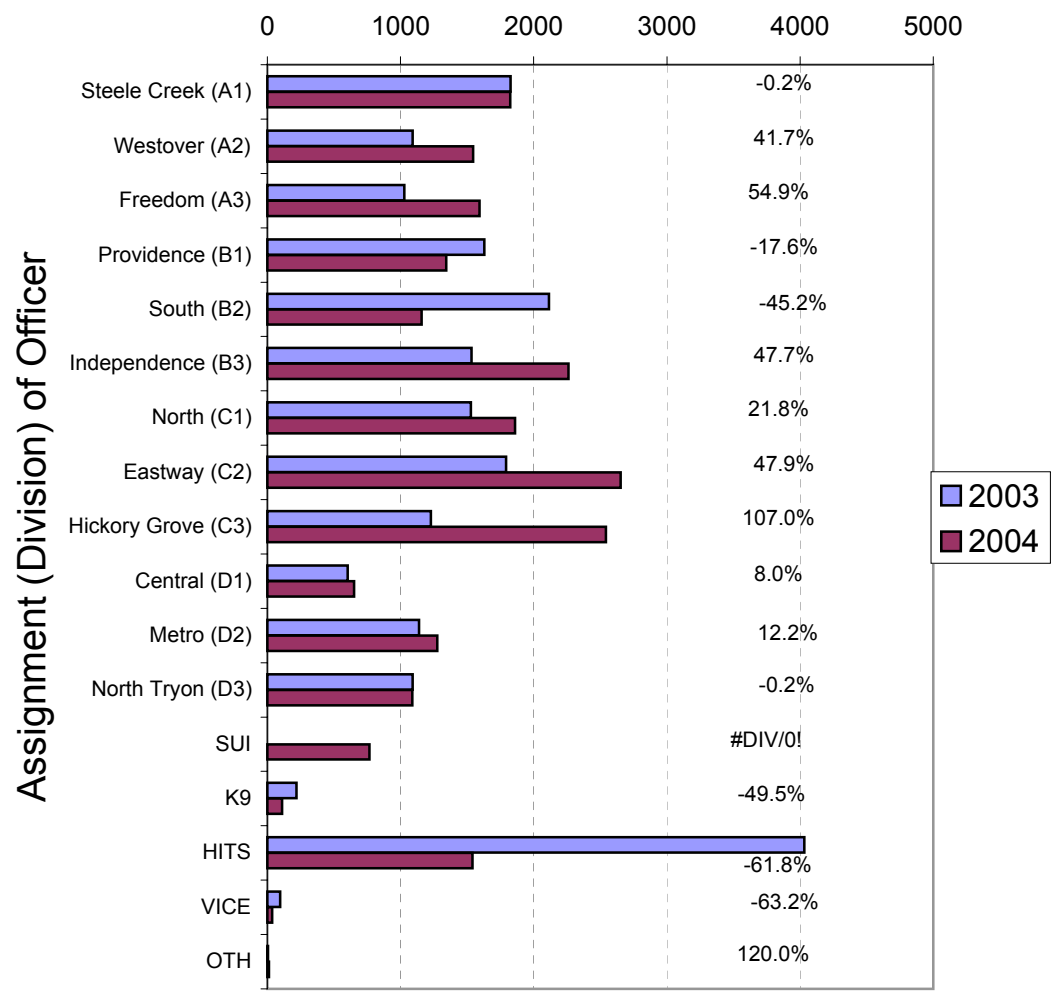
**Total Citation Enforcement by Month
Charlotte-Mecklenburg Police Dept.: 2002-2004**



**CMPD Citation Enforcement by Category
Year-to-Date, 2003 - 2004
(Through March, 2004)**



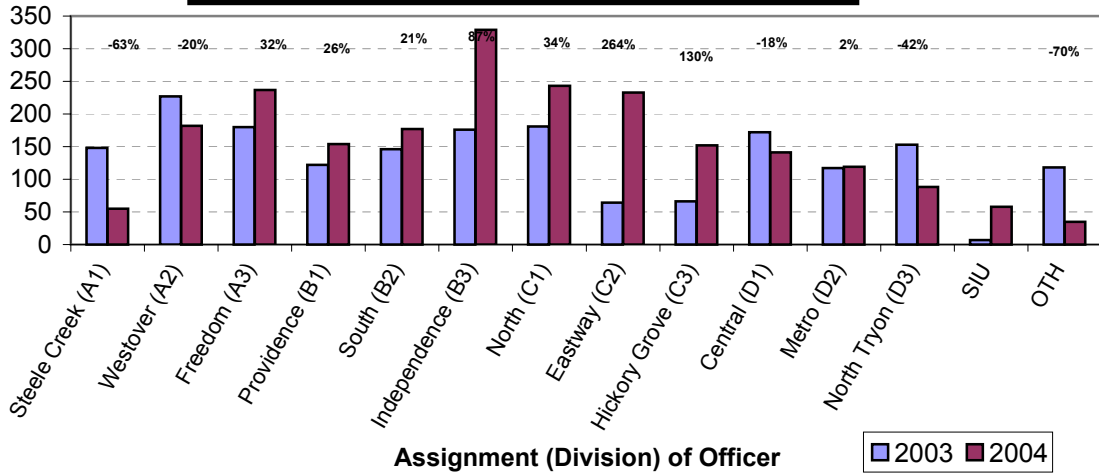
**Citations Issued Year-to-Date by CMPD Divisions
2003 - 2004
(Through March, 2004)**



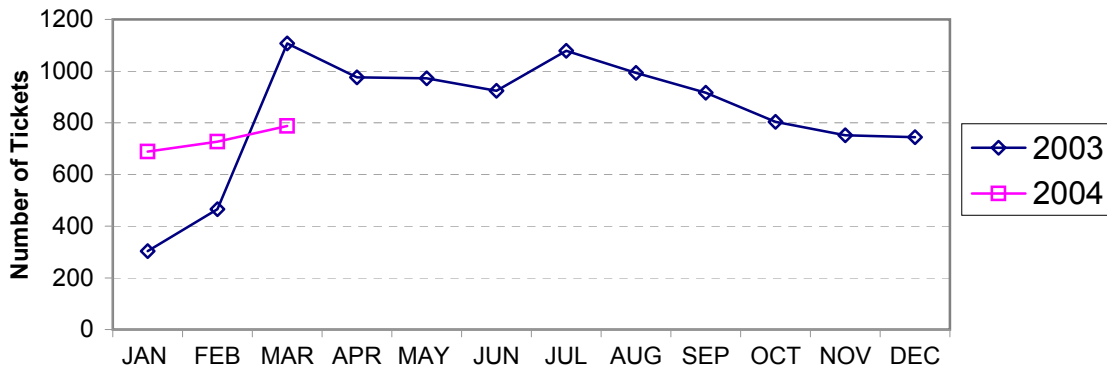
**Citations Issued by the Charlotte Mecklenburg Police Dept. Year-to-Date
(Through March, 2004)**

Total Citations	2003	2004	% Change
Hazardous	9,187	9,792	6.6%
Non-Hazardous	8,229	9,117	10.8%
Other City/State Statute/Ordinance	3,533	3,346	-5.3%
Total	20,949	22,255	6.2%

**Warning Tickets Issued by CMPD Division
Year-to-Date, 2003 - 2004
Through March, 2004**



**Total Warning Tickets Issued by CMPD
By Month: 2003 - 2004**



**Warning Tickets Issued by CMPD Year-to-Date
Through March, 2004**

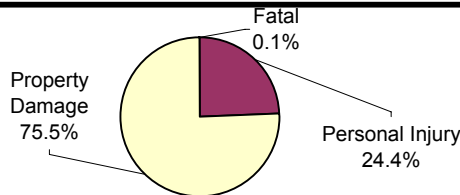
	2003	2004	% Change
Total Warning Tickets	1877	2203	17.4%

**Traffic Collison Reports
Charlotte-Mecklenburg Police Department
Year-to-Date: 2003-2004
(Through March)**

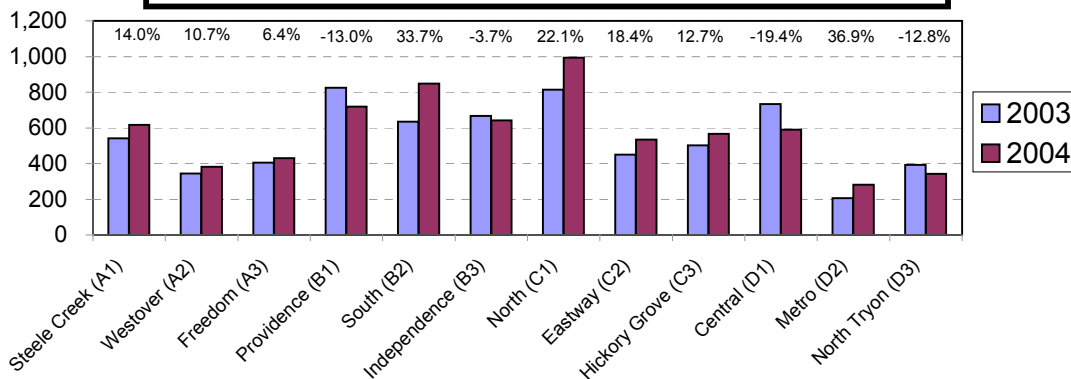
<u>Type</u>	<u>2003</u>	<u>2004</u>	<u>% Change</u>
Fatal Collisions	17	7	-58.8%
Vehicle Occupants Killed	19	6	-68.4%
Pedestrians Killed	2	1	-50.0%
Personal Injury Collisions	1519	1694	10.7%
Property Damage Collisions	5053	5276	4.4%
Total Collisions	6589	6977	5.9%

* The number of fatal collisions and the number of persons killed in those incidents is taken from the HITS file. Their records are updated for deaths that occur after the initial report is filed.

**Traffic Collisions Reported by Type
Charlotte-Mecklenburg Police Department:
2004 Year-to-Date
(Through March)**



**Traffic Collisions Reported by Charlotte-Mecklenburg Police Dept.
Year-to-Date By Location (Division) : 2003 -2004
(Through March)**



Uniform Crime Reporting Procedures:

The Charlotte-Mecklenburg Police Department reports offense and arrest statistics in accordance with standard Uniform Crime Reporting (UCR) guidelines. UCR policy states that any adjustments to previous months can be made on the current month's report:

...In tabulating crime counts, an agency may find that offense totals for past months require adjustments due to developments in the investigation or other handling of the matter. It may be necessary to adjust totals reported to UCR for the past month or prior months. Needed adjustments can be made on the current month's report and do not affect the reliability of the figures in that such adjustments tend to equalize each other from month to month over a period of time.

- *Uniform Crime Reporting Handbook*, FBI, 1984, p. 42-43

We are required to report crime monthly to the UCR program, and we do therefore make an effort to process monthly changes in a timely manner. However, occasionally due to the review and processing required for reclassifying, unfounding or clearing cases, the current month's totals may reflect the processing of a backlog of these changes from previous months.

Users of the data are cautioned that conclusions about substantial changes in crime trends or in clearance rates based on only a single month's data or trend may reflect some of these adjustments. For this reason, in addition to the monthly and year-to-date trends on Page 1, the monthly report routinely includes a comparison for the previous 12 months (p. 4), as well as graphs that provide seasonal/monthly comparisons over a five-year period (p. 5-8).

We do make an effort to present the most accurate information available at the time this report is published. However, errors in compiling the data and charts do sometimes occur, so please notify the Research, Planning, and Analysis office if you have any questions about the data in this report.

The new division names are used in this report. For ease of use, they also include the old district designations in parentheses.

V. L. Sorban
Research, Planning & Analysis Bureau