

**CHARLOTTE-MECKLENBURG POLICE DEPARTMENT
MONTHLY SUMMARY REPORT
JUNE, 2004**

**Darrel Stephens
Chief of Police**

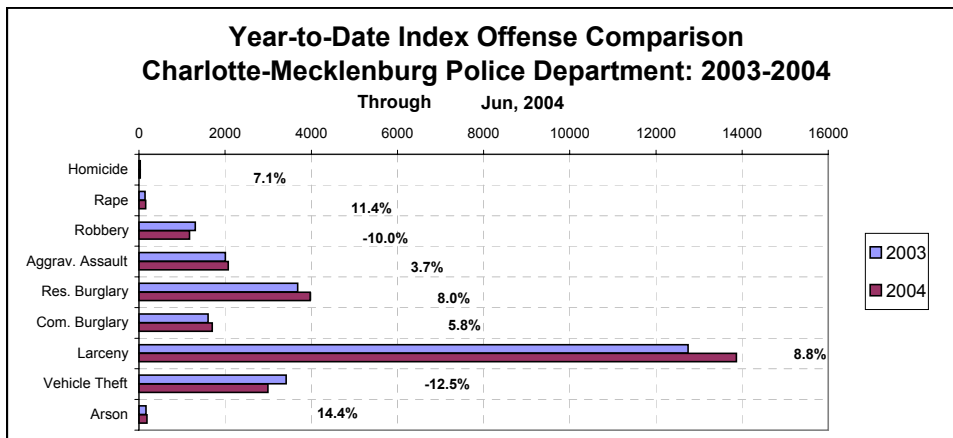
INDEX OFFENSES REPORTED TO CHARLOTTE-MECKLENBURG POLICE DEPARTMENT

Jun, 2004 INDEX OFFENSES	# THIS MONTH	% OF ALL INDEX	# LAST MONTH	MONTHLY % CHANGE	SAME MONTH LAST YEAR	MONTHLY % CHANGE	THIS YEAR TO DATE	LAST YEAR TO DATE	ANNUAL % CHANGE
HOMICIDE (MURDER & NON- NEGLIGENT MANSLAUGHTER)	11	0.2%	3	266.7%	3	266.7%	30	28	7.1%
RAPE TOTAL	26	0.6%	32	-18.8%	24	8.3%	156	140	11.4%
ACTUAL	23	0.5%	29	-20.7%	19	21.1%	146	128	14.1%
ATTEMPT	3	0.1%	3	0.0%	5	-40.0%	10	12	-16.7%
ROBBERY TOTAL	209	4.4%	210	-0.5%	180	16.1%	1174	1304	-10.0%
ARMED	163	3.5%	154	5.8%	142	14.8%	892	1015	-12.1%
STRONG-ARM	46	1.0%	56	-17.9%	38	21.1%	282	289	-2.4%
AGGRAVATED ASSAULT TOTAL	370	7.8%	427	-13.3%	333	11.1%	2076	2002	3.7%
BURGLARY TOTAL	1042	22.1%	1036	0.6%	858	21.4%	5673	5287	7.3%
RESIDENTIAL	742	15.7%	764	-2.9%	660	12.4%	3974	3681	8.0%
COMMERCIAL	300	6.4%	272	10.3%	198	51.5%	1699	1606	5.8%

FORCE	847	18.0%	834	1.6%	650	30.3%	4537	4182	8.5%
NO FORCE	133	2.8%	146	-8.9%	159	-16.4%	790	776	1.8%
ATTEMPT	62	1.3%	56	10.7%	49	26.5%	346	329	5.2%
LARCENY TOTAL	2459	52.1%	2564	-4.1%	2202	11.7%	13871	12748	8.8%
\$200 AND OVER	1275	27.0%	1211	5.3%	1064	19.8%	6747	6262	7.7%
\$50 TO \$200	421	8.9%	481	-12.5%	399	5.5%	2539	2336	8.7%
UNDER \$50	763	16.2%	872	-12.5%	739	3.2%	4585	4150	10.5%

FROM AUTO	1296	27.5%	1271	2.0%	1157	12.0%	7057	6673	5.8%
BICYCLE	21	0.4%	22	-4.5%	16	31.3%	105	83	26.5%
SHOPLIFTING	247	5.2%	261	-5.4%	197	25.4%	1484	1294	14.7%
OTHERS	895	19.0%	1010	-11.4%	832	7.6%	5225	4698	11.2%
VEHICLE THEFT TOTAL	567	12.0%	509	11.4%	596	-4.9%	2992	3418	-12.5%
ARSON TOTAL	34	0.7%	39	-12.8%	24	41.7%	183	160	14.4%
TOTALS	4718	100.0%	4820	-2.1%	4220	11.8%	26155	25087	4.3%
VIOLENT PROPERTY	616	13.1%	672	-8.3%	540	14.1%	3436	3474	-1.1%
PROPERTY	4102	86.9%	4148	-1.1%	3680	11.5%	22719	21613	5.1%

NOTE: These totals include offenses reported to the Charlotte-Mecklenburg Police Department in accordance with the Uniform Crime Reporting Program. Totals for homicide do not include cases investigated by the police but classed by UCR guidelines as negligent manslaughter or as "justifiable homicide."

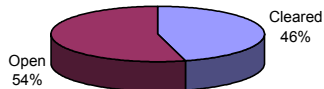


INDEX CLEARANCES REPORTED BY THE CHARLOTTE-MECKLENBURG POLICE DEPARTMENT

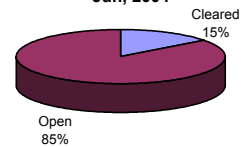
Jun, 2004 INDEX CLEARANCES	THIS MONTH:		LAST MONTH:		SAME MO. LAST YR:		THIS YEAR TO DATE:		LAST YEAR TO DATE:	
	NO.	%	NO.	%	NO.	%	NO.	%	NO.	%
MURDER & NON-NEGLIGENT MANSLAUGHTER	4	36.4%	3	100.0%	3	100.0%	12	40.0%	17	60.7%
RAPE TOTAL	14	53.8%	23	71.9%	18	75.0%	105	67.3%	67	47.9%
ACTUAL	13	56.5%	21	72.4%	14	73.7%	96	65.8%	60	46.9%
ATTEMPT	1	33.3%	2	66.7%	4	80.0%	9	90.0%	7	58.3%
ROBBERY TOTAL	69	33.0%	56	26.7%	35	19.4%	371	31.6%	233	17.9%
ARMED	51	31.3%	44	28.6%	22	15.5%	274	30.7%	150	14.8%
STRONG-ARM	18	39.1%	12	21.4%	13	34.2%	97	34.4%	83	28.7%
AGGRAVATED ASSAULT TOTAL	193	52.2%	195	45.7%	168	50.5%	1087	52.4%	936	46.8%
BURGLARY TOTAL	154	14.8%	112	10.8%	68	7.9%	668	11.8%	473	8.9%
RESIDENTIAL	129	17.4%	104	13.6%	59	8.9%	967	24.3%	339	9.2%
COMMERCIAL	25	8.3%	8	2.9%	9	4.5%	101	5.9%	134	8.3%
LARCENY TOTAL	377	15.3%	508	19.8%	274	12.4%	2014	14.5%	1475	11.6%
FROM AUTO	50	3.9%	48	3.8%	37	3.2%	221	3.1%	185	2.8%
BICYCLE	0	0.0%	3	13.6%	1	6.3%	7	6.7%	9	10.8%
SHOPLIFTING	181	73.3%	191	73.2%	121	61.4%	929	62.6%	725	56.0%
OTHERS	146	16.3%	266	26.3%	115	13.8%	857	16.4%	556	11.8%
VEHICLE THEFT TOTAL	93	16.4%	106	20.8%	110	18.5%	581	19.4%	578	16.9%
ARSON TOTAL	13	38.2%	5	12.8%	3	12.5%	54	29.5%	48	30.0%
TOTALS	917	19.4%	1008	20.9%	679	16.1%	4892	18.7%	3827	15.3%
VIOLENT PROPERTY	280	45.5%	277	41.2%	224	41.5%	1575	45.8%	1253	36.1%
	637	15.5%	731	17.6%	455	12.4%	3317	14.6%	2574	11.9%

NOTE: Clearances are reported in accordance with Uniform Crime Report guidelines. Since clearances are not counted until they are entered into the Records system, any delays in processing may result in some clearances being reported in succeeding months.

**Year-to-Date Violent Index Clearance Rate
Charlotte-Mecklenburg Police Department: 2004
Jun, 2004**

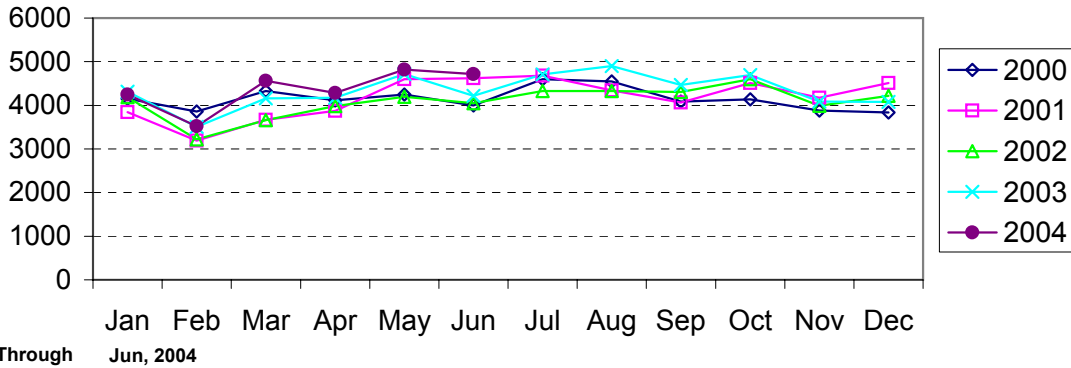


**Year-to-Date Property Index Clearance Rate
Charlotte-Mecklenburg Police Department: 2004
Jun, 2004**

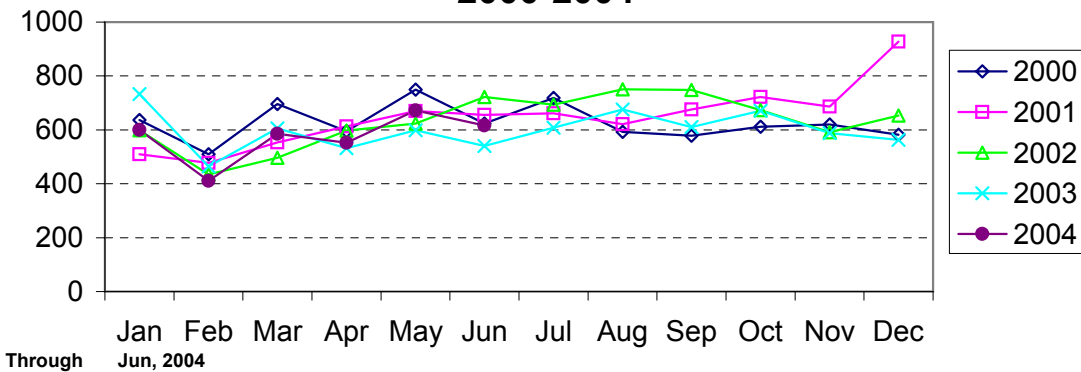


Clearance rates for crime reporting are calculated by dividing the number of crimes cleared during a designated time span by the number of crimes reported in the same period and converting the result to a percentage (multiplying by 100). Since cases from previous reporting periods can be cleared during the designated time span, the rate may be higher than 100%.

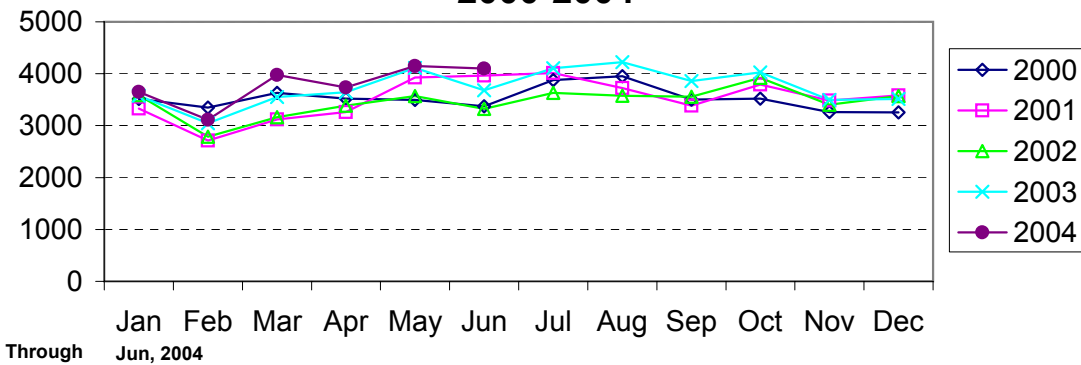
Index Offenses Reported by Month Charlotte-Mecklenburg Police Department: 2000-2004



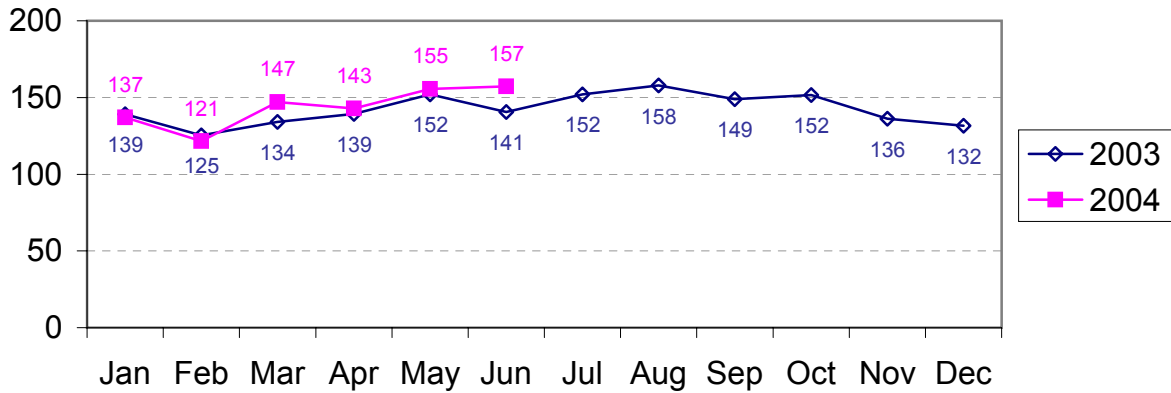
Violent Index Offenses Reported by Month Charlotte-Mecklenburg Police Department: 2000-2004



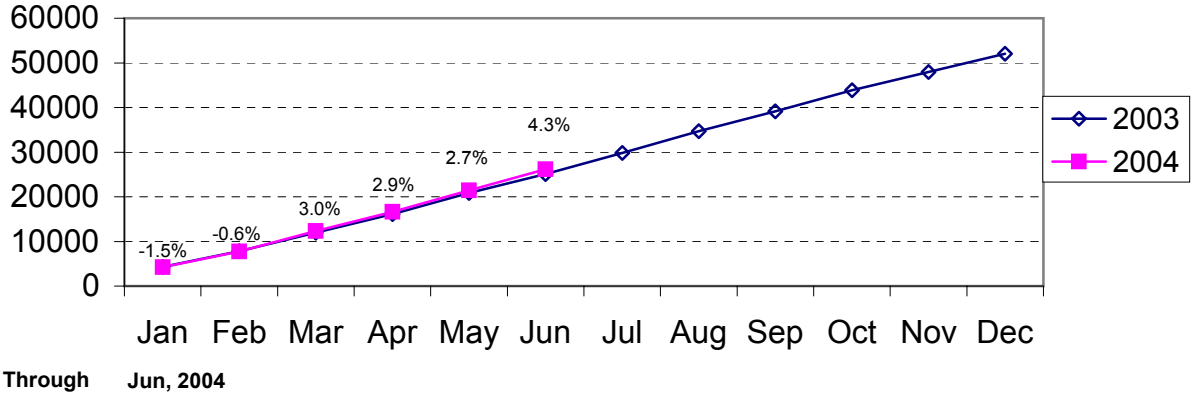
Property Index Offenses Reported by Month Charlotte-Mecklenburg Police Department: 2000-2004



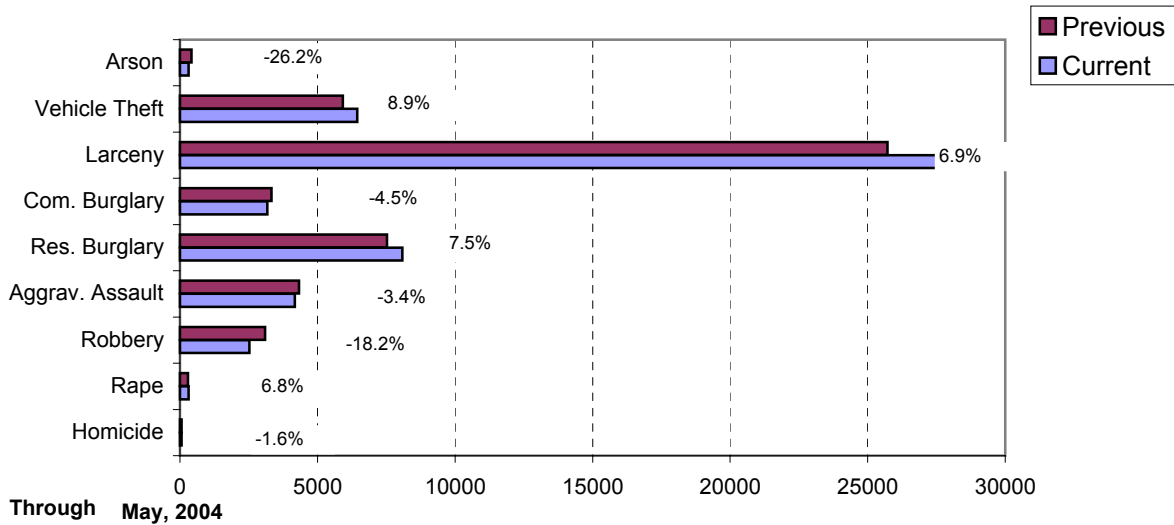
Index Offense Per Day Average by Month Charlotte-Mecklenburg Police Department: 2003-2004



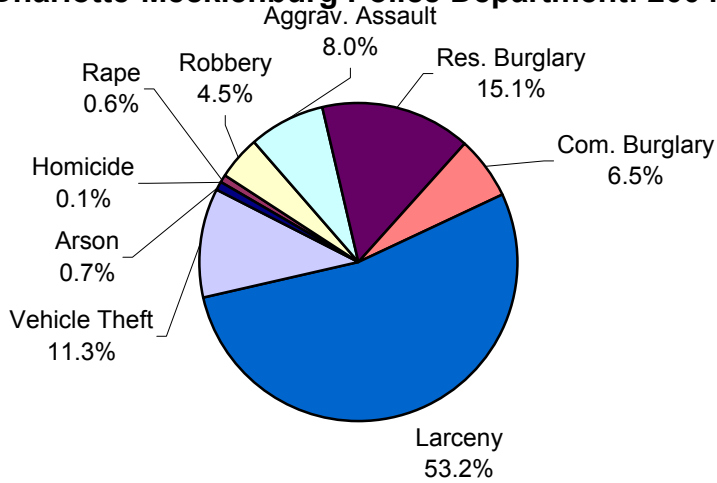
Index Offenses Year-to-Date Cumulative Totals Charlotte-Mecklenburg Police Department: 2002-2003



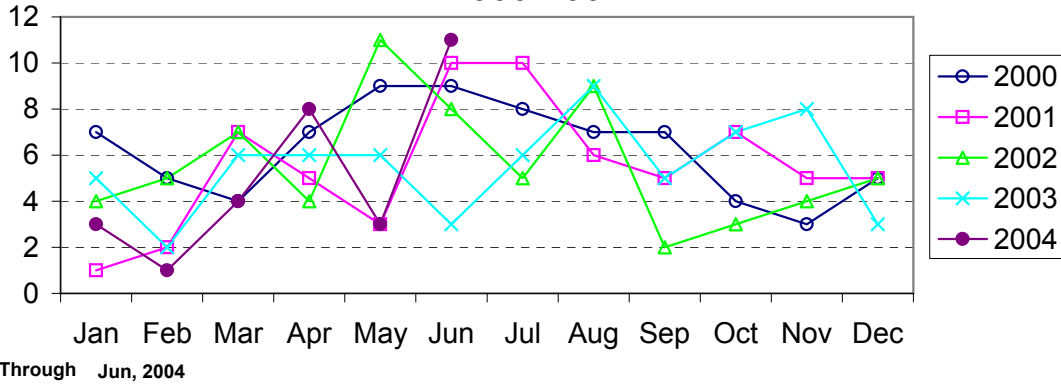
**Index Offenses in Current and Previous 12 Months
Charlotte-Mecklenburg Police Department:
2003-2004**



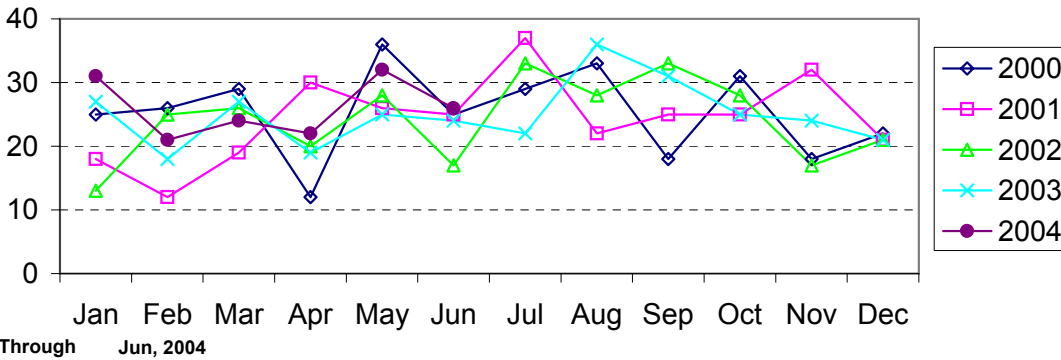
**Year-to-Date Index Offenses by Type
Charlotte-Mecklenburg Police Department: 2004**



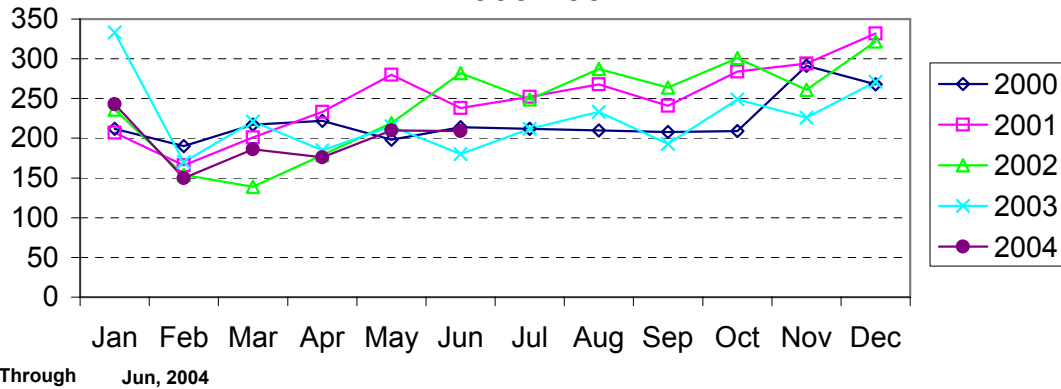
Homicide Reported by Month Charlotte-Mecklenburg Police Department: 2000-2004



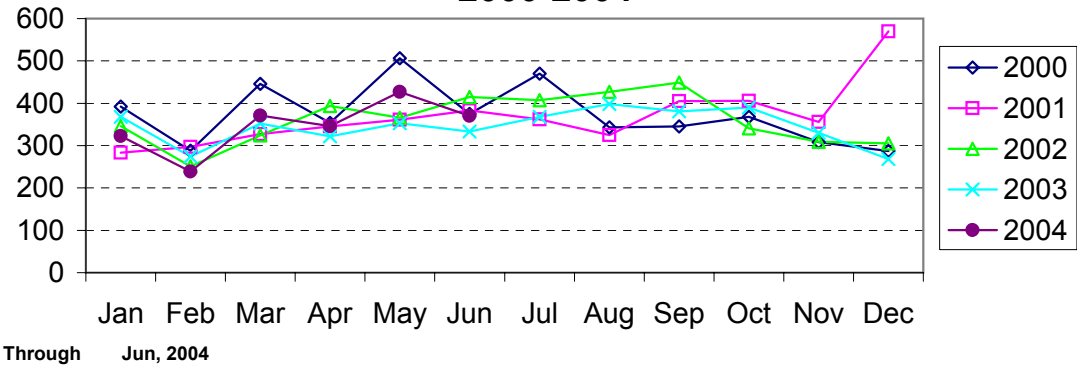
Rape Reported by Month Charlotte-Mecklenburg Police Department: 2000-2004



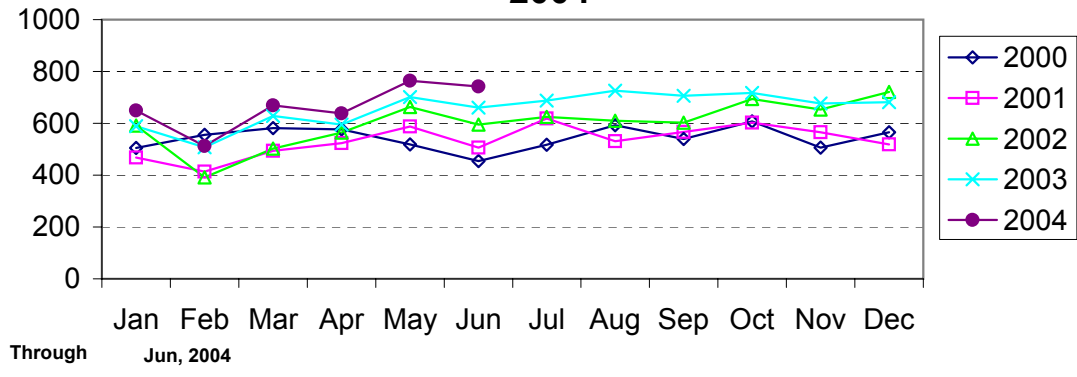
Robbery Reported by Month Charlotte-Mecklenburg Police Department: 2000-2004



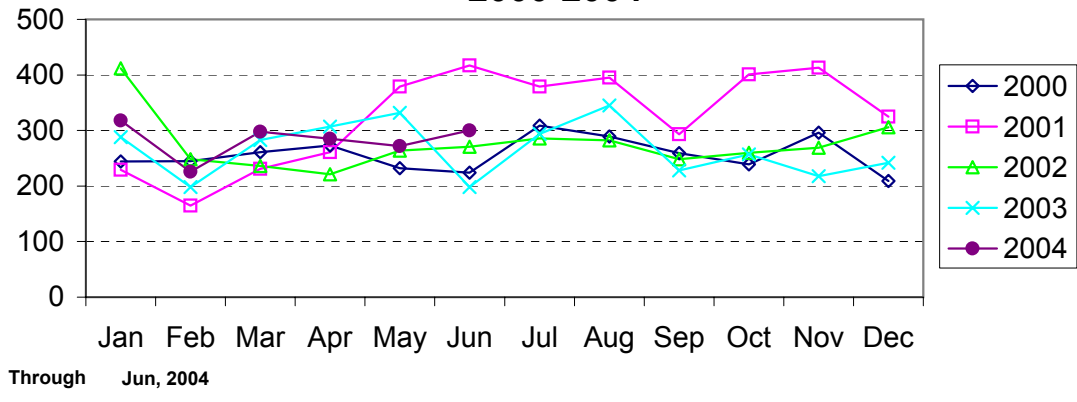
Aggravated Assault Reported by Month Charlotte-Mecklenburg Police Department: 2000-2004



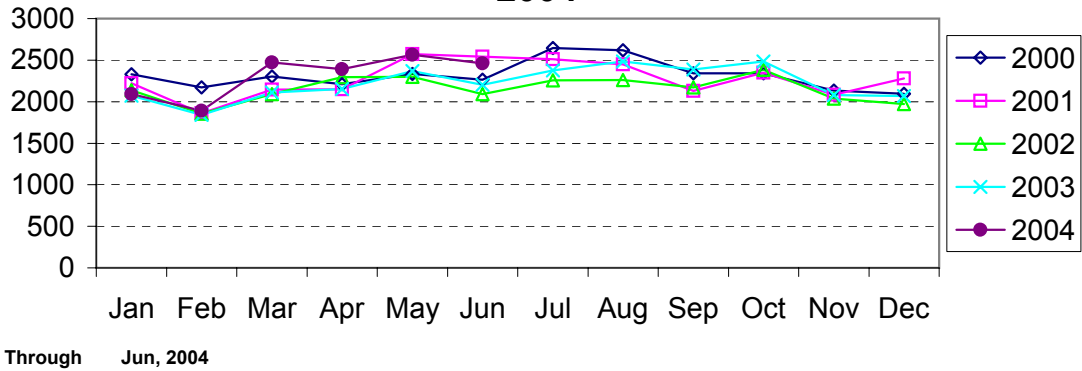
Residential Burglary Reported by Month Charlotte-Mecklenburg Police Department: 2000- 2004



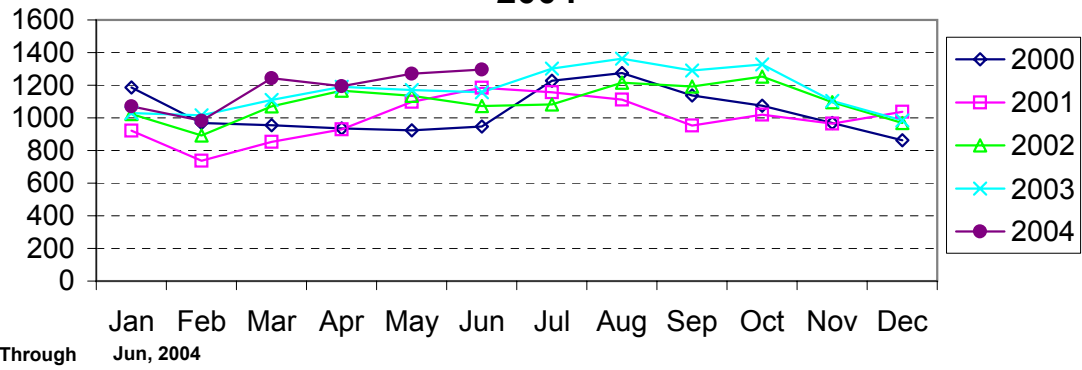
Commercial Burglary Reported by Month Charlotte-Mecklenburg Police Department: 2000-2004



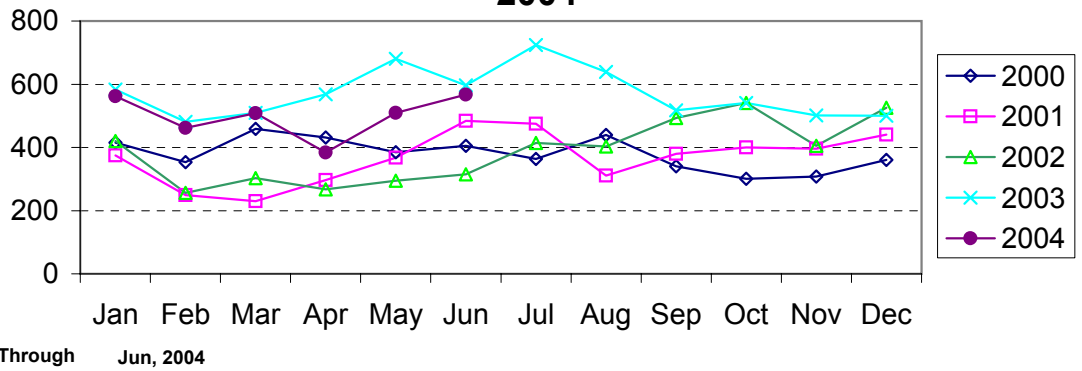
Larceny Reported by Month Charlotte-Mecklenburg Police Department: 2000-2004



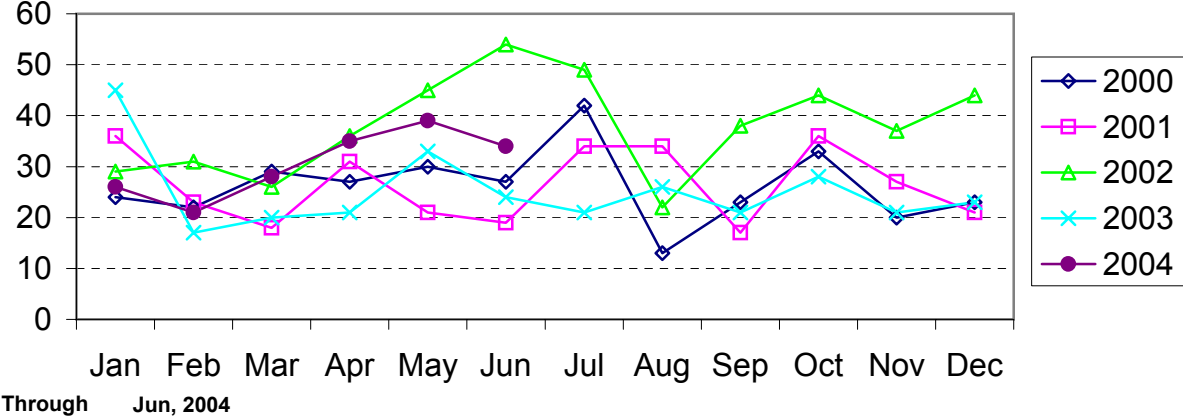
Larceny from Vehicle Reported by Month Charlotte-Mecklenburg Police Department: 2000-2004



Vehicle Theft Reported by Month Charlotte-Mecklenburg Police Department: 2000-2004



Arson Reported by Month Charlotte-Mecklenburg Police Department: 2000-2004



Index Offenses Reported by Division and Service Area of Occurrence									
West Service Area: Jan-Jun, 2003-2004									
INDEX_CATEGORIES	Westover (A2)			Freedom (A3)			West Service Area		
	2003	2004	% Change	2003	2004	% Change	2003	2004	% Change
MURDER & NON-NEGLIGENT MANSLAUGHTER	3	1	-66.7%	3	1	-66.7%	6	2	-66.7%
RAPE	9	12	33.3%	22	14	-36.4%	31	26	-16.1%
ACTUAL	9	12	33.3%	19	14	-26.3%	28	26	-7.1%
ATTEMPTED	0	0	NA	3	0	-100.0%	3	0	-100.0%
ROBBERY	117	90	-23.1%	129	146	13.2%	246	236	-4.1%
ARMED	88	70	-20.5%	98	111	13.3%	186	181	-2.7%
STRONG-ARM	29	20	-31.0%	31	35	12.9%	60	55	-8.3%
AGGRAVATED ASSAULT	201	167	-16.9%	247	236	-4.5%	448	403	-10.0%
BURGLARY	410	446	8.8%	651	807	24.0%	1061	1253	18.1%
RESIDENTIAL	279	305	9.3%	419	570	36.0%	698	875	25.4%
COMMERCIAL	131	141	7.6%	232	237	2.2%	363	378	4.1%
LARCENY	706	884	25.2%	1045	1407	34.6%	1751	2291	30.8%
FROM AUTO	357	466	30.5%	492	682	38.6%	849	1148	35.2%
BICYCLE	4	8	100.0%	4	5	25.0%	8	13	62.5%
SHOPLIFTING	74	80	8.1%	88	142	61.4%	162	222	37.0%
OTHERS	271	330	21.8%	461	578	25.4%	732	908	24.0%
VEHICLE THEFT	209	200	-4.3%	382	344	-9.9%	591	544	-8.0%
ARSON	8	14	75.0%	22	19	-13.6%	30	33	10.0%
TOTALS	1663	1814	9.1%	2501	2974	18.9%	4164	4788	15.0%
VIOLENT	330	270	-18.2%	401	397	-1.0%	731	667	-8.8%
PROPERTY	1333	1544	15.8%	2100	2577	22.7%	3433	4121	20.0%

Index Offenses Reported by Division and Service Area of Occurrence									
Southeast Service Area: Jan-Jun, 2003-2004									
INDEX_CATEGORIES	Providence (B1)			Independence (B3)			Southeast Service Area		
	2003	2004	% Change	2003	2004	% Change	2003	2004	% Change
MURDER & NON-NEGLIGENT MANSLAUGHTER	0	1	NA	2	2	0.0%	2	3	50.0%
RAPE	11	9	-18.2%	14	9	-35.7%	25	18	-28.0%
ACTUAL	10	9	-10.0%	12	8	-33.3%	22	17	-22.7%
ATTEMPTED	1	0	-100.0%	2	1	-50.0%	3	1	-66.7%
ROBBERY	57	62	8.8%	109	98	-10.1%	166	160	-3.6%
ARMED	46	46	0.0%	92	79	-14.1%	138	125	-9.4%
STRONG-ARM	11	16	45.5%	18	19	5.6%	29	35	20.7%
AGGRAVATED ASSAULT	91	93	2.2%	144	174	20.8%	235	267	13.6%
BURGLARY	412	434	5.3%	500	491	-1.8%	912	925	1.4%
RESIDENTIAL	244	247	1.2%	388	375	-3.4%	632	622	-1.6%
COMMERCIAL	168	187	11.3%	112	116	3.6%	280	303	8.2%
LARCENY	838	928	10.7%	1420	1104	-22.3%	2258	2032	-10.0%
FROM AUTO	406	420	3.4%	817	631	-22.8%	1223	1051	-14.1%
BICYCLE	4	9	125.0%	21	8	-61.9%	25	17	-32.0%
SHOPLIFTING	96	95	-1.0%	126	79	-37.3%	222	174	-21.6%
OTHERS	332	404	21.7%	456	386	-15.4%	788	790	0.3%
VEHICLE THEFT	157	150	-4.5%	372	325	-12.6%	529	475	-10.2%
ARSON	9	8	-11.1%	24	20	-16.7%	33	28	-15.2%
TOTALS	1575	1685	7.0%	2585	2223	-14.0%	4160	3908	-6.1%
VIOLENT	159	165	3.8%	269	283	5.2%	428	448	4.7%
PROPERTY	1416	1520	7.3%	2316	1940	-16.2%	3732	3460	-7.3%

The data in the district breakdowns does not include a small number of offenses in which the location of the offense was unknown or was entered without a valid tract assignment. Districts are not equal in geographic size, demographics, zoning/development, and other factors that influence the rate of crimes committed in an area. Therefore, the comparison of raw offense totals across districts is not advisable.

Index Offenses Reported by Division and Service Area of Occurrence									
Northeast Service Area: Jan-Jun, 2003-2004									
INDEX_CATEGORIES	North (C1)			Hickory Grove (C3)			Northeast Service Area		
	2003	2004	% Change	2003	2004	% Change	2003	2004	% Change
MURDER & NON-NEGLIGENT MANSLAUGHTER	4	3	-25.0%	4	2	-50.0%	8	5	-37.5%
RAPE	17	21	23.5%	12	19	58.3%	29	40	37.9%
ACTUAL	15	20	33.3%	11	17	54.5%	26	37	42.3%
ATTEMPTED	2	1	-50.0%	1	2	100.0%	3	3	0.0%
ROBBERY	84	106	26.2%	122	104	-14.8%	206	210	1.9%
ARMED	68	84	23.5%	98	83	-15.3%	166	167	0.6%
STRONG-ARM	16	22	37.5%	24	21	-12.5%	40	43	7.5%
AGGRAVATED ASSAULT	157	167	6.4%	205	248	21.0%	362	415	14.6%
BURGLARY	584	719	23.1%	553	571	3.3%	1137	1290	13.5%
RESIDENTIAL	402	512	27.4%	419	446	6.4%	821	958	16.7%
COMMERCIAL	182	207	13.7%	134	125	-6.7%	316	332	5.1%
LARCENY	1829	2072	13.3%	1134	1067	-5.9%	2963	3139	5.9%
FROM AUTO	1048	1170	11.6%	588	525	-10.7%	1636	1695	3.6%
BICYCLE	8	14	75.0%	8	19	137.5%	16	33	106.3%
SHOPLIFTING	165	170	3.0%	117	80	-31.6%	282	250	-11.3%
OTHERS	608	718	18.1%	421	443	5.2%	1029	1161	12.8%
VEHICLE THEFT	390	385	-1.3%	413	312	-24.5%	803	697	-13.2%
ARSON	18	18	0.0%	19	26	36.8%	37	44	18.9%
TOTALS	3083	3491	13.2%	2462	2349	-4.6%	5545	5840	5.3%
VIOLENT	262	297	13.4%	343	373	8.7%	605	670	10.7%
PROPERTY	2821	3194	13.2%	2119	1976	-6.7%	4940	5170	4.7%

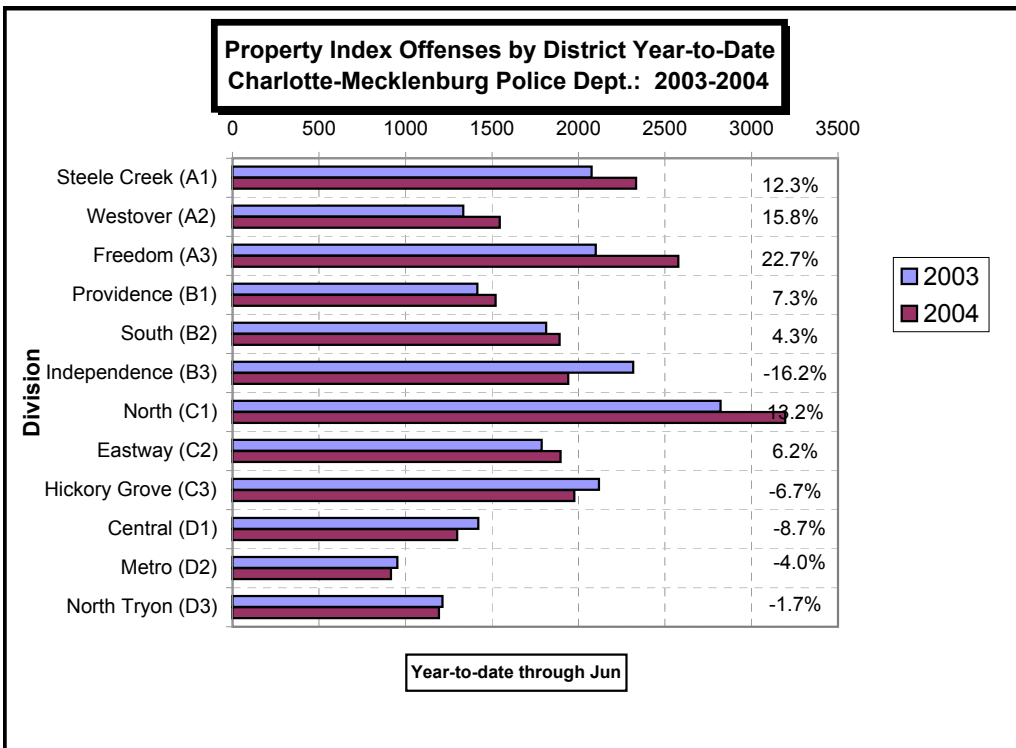
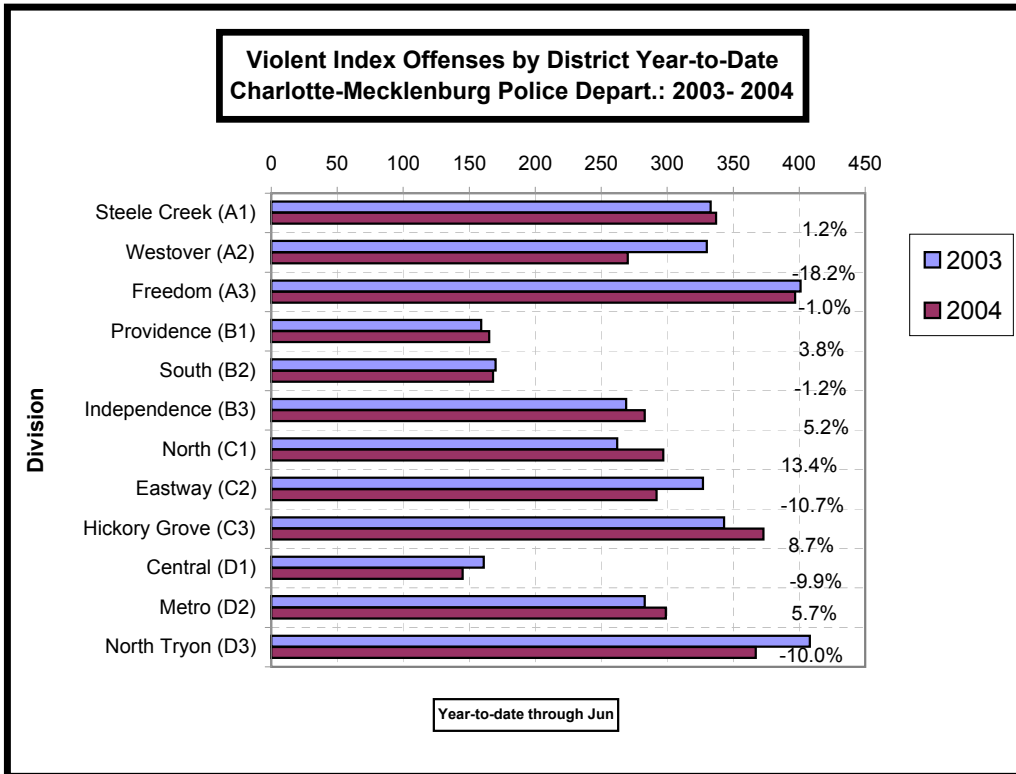
Index Offenses Reported by Division and Service Area of Occurrence									
Central Service Area: Jan-Jun, 2003-2004									
INDEX_CATEGORIES	Central (D1)			Metro (D2)			Central Service Area		
	2003	2004	% Change	2003	2004	% Change	2003	2004	% Change
MURDER & NON-NEGLIGENT MANSLAUGHTER	2	0	-100.0%	2	4	100.0%	4	4	0.0%
RAPE	8	11	37.5%	11	15	36.4%	19	26	36.8%
ACTUAL	8	10	25.0%	10	13	30.0%	18	23	27.8%
ATTEMPTED	0	1	NA	1	2	100.0%	1	3	200.0%
ROBBERY	58	52	-10.3%	86	91	5.8%	144	143	-0.7%
ARMED	33	27	-18.2%	64	75	17.2%	97	102	5.2%
STRONG-ARM	25	25	0.0%	22	16	-27.3%	47	41	-12.8%
AGGRAVATED ASSAULT	93	82	-11.8%	184	189	2.7%	277	271	-2.2%
BURGLARY	194	187	-3.6%	283	288	1.8%	477	475	-0.4%
RESIDENTIAL	99	74	-25.3%	214	204	-4.7%	313	278	-11.2%
COMMERCIAL	95	113	18.9%	69	84	21.7%	164	197	20.1%
LARCENY	963	971	0.8%	470	466	-0.9%	1433	1437	0.3%
FROM AUTO	546	523	-4.2%	256	206	-19.5%	802	729	-9.1%
BICYCLE	2	7	250.0%	5	2	-60.0%	7	9	28.6%
SHOPLIFTING	28	33	17.9%	13	38	192.3%	41	71	73.2%
OTHERS	387	408	5.4%	196	220	12.2%	583	628	7.7%
VEHICLE THEFT	256	138	-46.1%	192	153	-20.3%	448	291	-35.0%
ARSON	8	2	-75.0%	8	8	0.0%	16	10	-37.5%
TOTALS	1582	1443	-8.8%	1236	1214	-1.8%	2818	2657	-5.7%
VIOLENT	161	145	-9.9%	283	299	5.7%	444	444	0.0%
PROPERTY	1421	1298	-8.7%	953	915	-4.0%	2374	2213	-6.8%

The data in the district breakdowns does not include a small number of offenses in which the location of the offense was unknown or was entered without a valid tract assignment. Districts are not equal in geographic size, demographics, zoning/development, and other factors that influence the rate of crimes committed in an area. Therefore, the comparison of raw offense totals across districts is not advisable.

Index Offenses Reported by Division and Service Area of Occurrence									
East Service Area: Jan-Jun, 2003-2004									
INDEX_CATEGORIES	Eastway (C2)			North Tryon (D3)			East Service Area		
	2003	2004	% Change	2003	2004	% Change	2003	2004	% Change
MURDER & NON-NEGLIGENT MANSLAUGHTER	1	4	300.0%	4	5	25.0%	5	9	80.0%
RAPE	4	5	25.0%	10	12	20.0%	14	17	21.4%
ACTUAL	4	5	25.0%	10	11	10.0%	14	16	14.3%
ATTEMPTED	0	0	NA	0	1	NA	0	1	NA
ROBBERY	168	126	-25.0%	163	133	-18.4%	331	259	-21.8%
ARMED	135	90	-33.3%	133	103	-22.6%	268	193	-28.0%
STRONG-ARM	33	36	9.1%	30	30	0.0%	63	66	4.8%
AGGRAVATED ASSAULT	154	157	1.9%	231	217	-6.1%	385	374	-2.9%
BURGLARY	442	453	2.5%	345	328	-4.9%	787	781	-0.8%
RESIDENTIAL	319	309	-3.1%	241	228	-5.4%	560	537	-4.1%
COMMERCIAL	123	144	17.1%	104	100	-3.8%	227	244	7.5%
LARCENY	1097	1191	8.6%	575	660	14.8%	1672	1851	10.7%
FROM AUTO	508	399	-21.5%	304	316	3.9%	812	715	-11.9%
BICYCLE	10	16	60.0%	3	4	33.3%	13	20	53.8%
SHOPLIFTING	245	412	68.2%	36	56	55.6%	281	468	66.5%
OTHERS	334	364	9.0%	232	284	22.4%	566	648	14.5%
VEHICLE THEFT	242	233	-3.7%	288	200	-30.6%	530	433	-18.3%
ARSON	6	20	233.3%	6	5	-16.7%	12	25	108.3%
TOTALS	2114	2189	3.5%	1622	1560	-3.8%	3736	3749	0.3%
VIOLENT PROPERTY	327 1787	292 1897	-10.7% 6.2%	408 1214	367 1193	-10.0% -1.7%	735 3001	659 3090	-10.3% 3.0%

Index Offenses Reported by Division and Service Area of Occurrence									
South Service Area: Jan-Jun, 2003-2004									
INDEX_CATEGORIES	Steele Creek (A1)			South (B2)			South Service Area		
	2003	2004	% Change	2003	2004	% Change	2003	2004	% Change
MURDER & NON-NEGLIGENT MANSLAUGHTER	3	4	33.3%	0	1	NA	3	5	66.7%
RAPE	12	13	8.3%	10	11	10.0%	22	24	9.1%
ACTUAL	11	11	0.0%	9	11	22.2%	20	22	10.0%
ATTEMPTED	1	2	100.0%	1	0	-100.0%	2	2	0.0%
ROBBERY	144	97	-32.6%	61	60	-1.6%	205	157	-23.4%
ARMED	102	74	-27.5%	45	44	-2.2%	147	118	-19.7%
STRONG-ARM	32	23	-28.1%	16	16	0.0%	48	39	-18.8%
AGGRAVATED ASSAULT	174	223	28.2%	99	96	-3.0%	273	319	16.8%
BURGLARY	423	439	3.8%	430	412	-4.2%	853	851	-0.2%
RESIDENTIAL	283	322	13.8%	335	328	-2.1%	618	650	5.2%
COMMERCIAL	140	117	-16.4%	95	84	-11.6%	235	201	-14.5%
LARCENY	1333	1586	19.0%	1192	1260	5.7%	2525	2846	12.7%
FROM AUTO	624	884	41.7%	656	696	6.1%	1280	1580	23.4%
BICYCLE	11	8	-27.3%	3	5	66.7%	14	13	-7.1%
SHOPLIFTING	206	222	7.8%	88	67	-23.9%	294	289	-1.7%
OTHERS	492	472	-4.1%	445	492	10.6%	937	964	2.9%
VEHICLE THEFT	306	288	-5.9%	176	196	11.4%	482	484	0.4%
ARSON	14	19	35.7%	14	22	57.1%	28	41	46.4%
TOTALS	2409	2669	10.8%	1982	2058	3.8%	4391	4727	7.7%
VIOLENT PROPERTY	333 2076	337 2332	1.2% 12.3%	170 1812	168 1890	-1.2% 4.3%	503 3888	505 4222	0.4% 8.6%

The data in the district breakdowns does not include a small number of offenses in which the location of the offense was unknown or was entered without a valid tract assignment. Districts are not equal in geographic size, demographics, zoning/development, and other factors that influence the rate of crimes committed in an area. Therefore, the comparison of raw offense totals across districts is not advisable.



The data in the district breakdowns does not include a small number of offenses in which the location of the offense was unknown or was entered without a valid tract assignment. Districts are not equal in geographic size, demographics, zoning/development, and other factors that influence the rate of crimes committed in an area. Therefore, the comparison of raw offense totals across districts is not advisable.

Arrests by Charlotte-Mecklenburg Police Department
Year-To-Date: 2003-2004
(Through June)

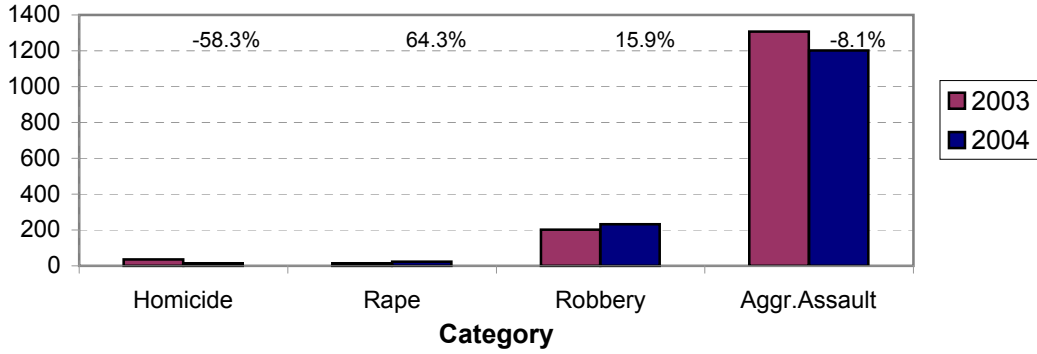
CATEGORY	ADULTS (AGE 18 & OLDER):			JUVENILES (UNDER 18):			TOTAL ARRESTS:		
	2003 Y-T-D	2004 Y-T-D	% CHANGE	2003 Y-T-D	2004 Y-T-D	% CHANGE	2003 Y-T-D	2004 Y-T-D	% CHANGE
Murder/Non-Negligent Manslaughter	33	15	-54.5%	3	0	-100.0%	36	15	-58.3%
Negligent & Vehicular Manslaughter	1	3	200.0%	0	0	NA	1	3	200.0%
Rape	14	21	50.0%	0	2	NA	14	23	64.3%
Robbery	146	157	7.5%	55	76	38.2%	201	233	15.9%
Aggravated Assault	1122	1027	-8.5%	185	174	-5.9%	1307	1201	-8.1%
Burglary	252	270	7.1%	133	111	-16.5%	385	381	-1.0%
Larceny	721	781	8.3%	361	323	-10.5%	1082	1104	2.0%
Vehicle Theft	79	44	-44.3%	211	84	-60.2%	290	128	-55.9%
Non-Aggravated Assault	836	939	12.3%	467	458	-1.9%	1303	1397	7.2%
Arson	13	9	-30.8%	16	18	12.5%	29	27	-6.9%
Forgery/Counterfiet	54	65	20.4%	3	2	-33.3%	57	67	17.5%
Fraud	258	272	5.4%	6	4	-33.3%	264	276	4.5%
Embezzlement	54	48	-11.1%	3	7	133.3%	57	55	-3.5%
Stolen Property	276	245	-11.2%	92	50	-45.7%	368	295	-19.8%
Vandalism	139	115	-17.3%	98	114	16.3%	237	229	-3.4%
Weapons	244	226	-7.4%	33	35	6.1%	277	261	-5.8%
Prostitution	137	150	9.5%	0	8	NA	137	158	15.3%
Sex Offenses	99	102	3.0%	23	5	-78.3%	122	107	-12.3%
Drugs	1668	1405	-15.8%	163	132	-19.0%	1831	1537	-16.1%
Gambling	15	12	-20.0%	0	0	NA	15	12	-20.0%
Offenses vs. Family	6	1	-83.3%	0	1	NA	6	2	-66.7%
DUI	1024	980	-4.3%	4	6	50.0%	1028	986	-4.1%
Liquor	74	110	48.6%	8	6	-25.0%	82	116	41.5%
Disorder Conduct	263	263	0.0%	150	175	16.7%	413	438	6.1%
Other Non-Traffic	3583	4032	12.5%	401	439	9.5%	3984	4471	12.2%
VIOLENT INDEX¹	1315	1220	-7.2%	243	252	3.7%	1558	1472	-5.5%
PROPERTY INDEX²	1065	1104	3.7%	721	536	-25.7%	1786	1640	-8.2%
INDEX SUBTOTAL	2380	2324	-2.4%	964	788	-18.3%	3344	3112	-6.9%
PART 2 SUBTOTAL³	8731	8968	2.7%	1451	1442	-0.6%	10182	10410	2.2%
TOTAL	11111	11292	1.6%	2415	2230	-7.7%	13526	13522	0.0%

¹Violent Index includes murder and non-negligent manslaughter, rape, robbery, and aggravated assault.

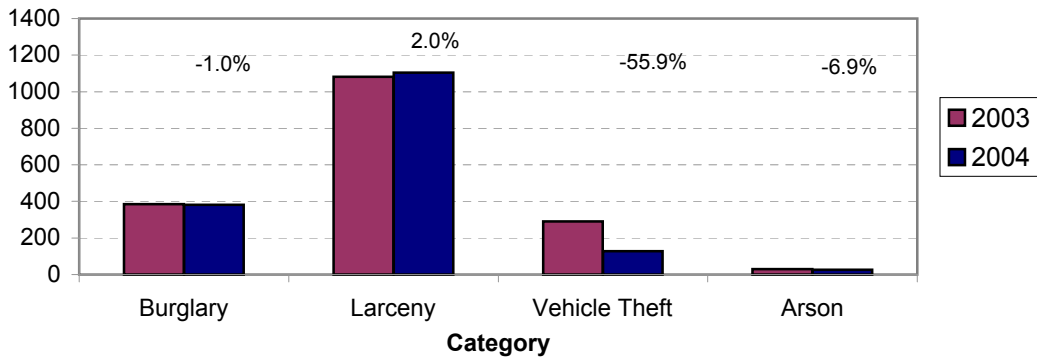
²Property Index includes burglary, larceny, vehicle theft, and arson.

³Part 2 crimes include non-traffic crimes not counted in the Index totals.

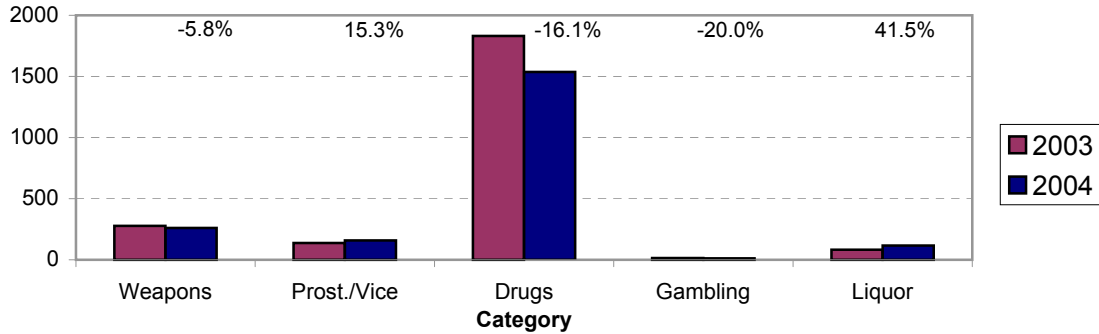
**Violent Index Arrests Year-to-Date
Charlotte-Mecklenburg Police Department: 2003-2004
(Through June)**



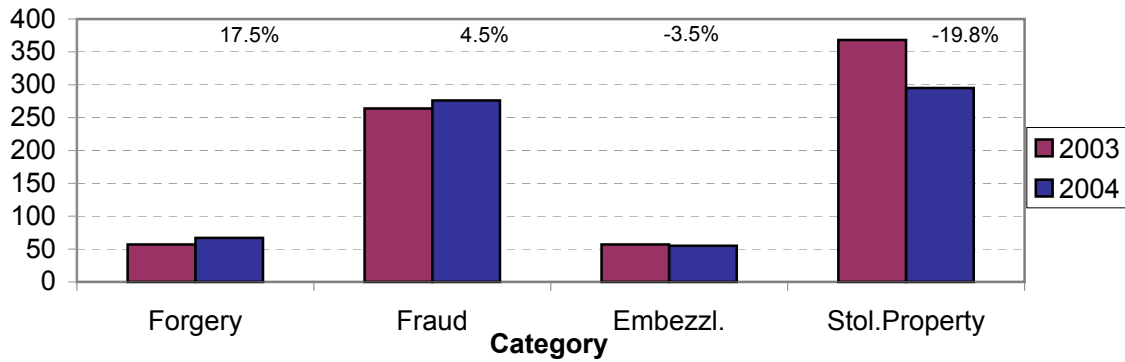
**Property Index Arrests Year-to-Date
Charlotte-Mecklenburg Police Department: 2003-2004
(Through June)**



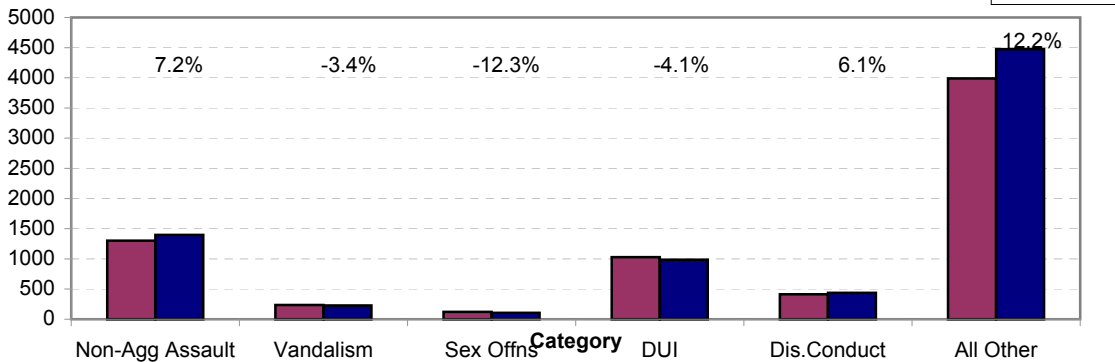
**Arrests for Vice/CCW/Drugs/Etc. Year-to-Date
Charlotte-Mecklenburg Police Department: 2003 - 2004
(Through June)**



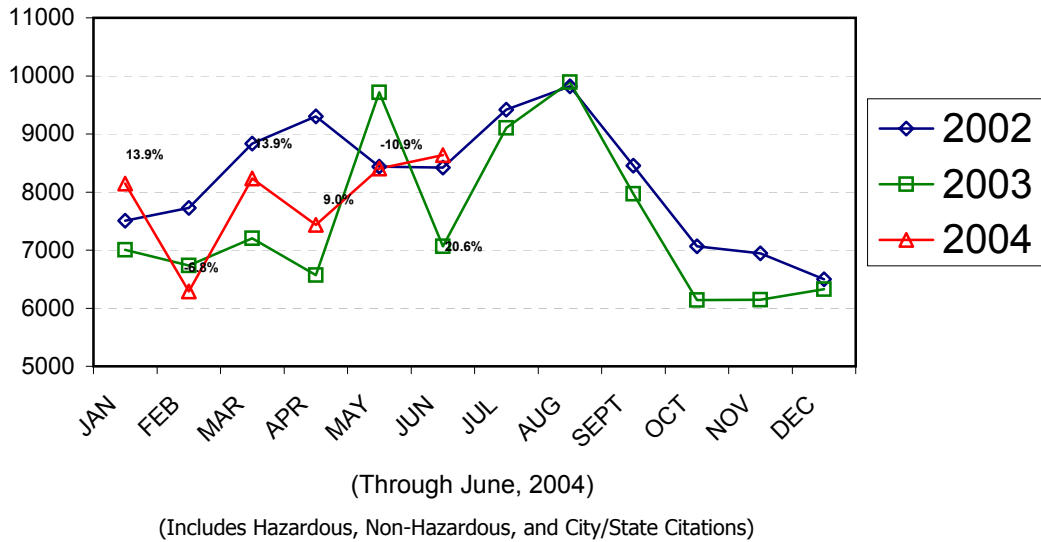
**Arrests for Property/White Collar Crime Year-to-Date
Charlotte-Mecklenburg Police Department: 2003 - 2004
(Through June)**



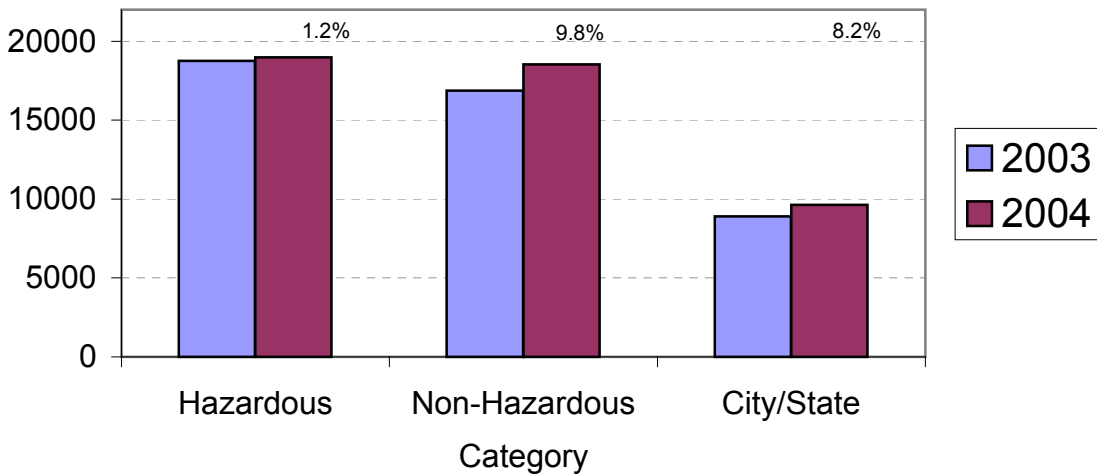
**Arrests for Other Categories Year-to-Date
Charlotte-Mecklenburg Police Department: 2003 - 2004
(Through June)**



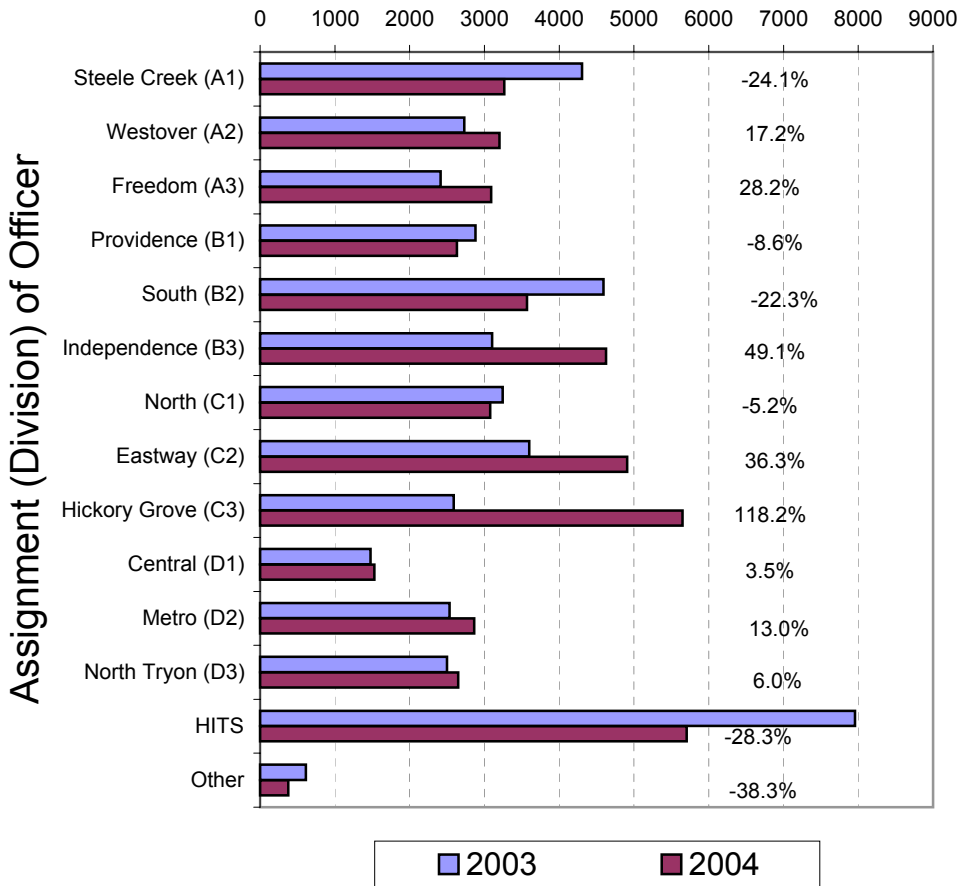
Total Citation Enforcement by Month Charlotte-Mecklenburg Police Dept.: 2002-2004



CMPD Citation Enforcement by Category Year-to-Date, 2003 - 2004 (Through June, 2004)



**Citations Issued Year-to-Date by CMPD Divisions
2003 - 2004
(Through June, 2004)**

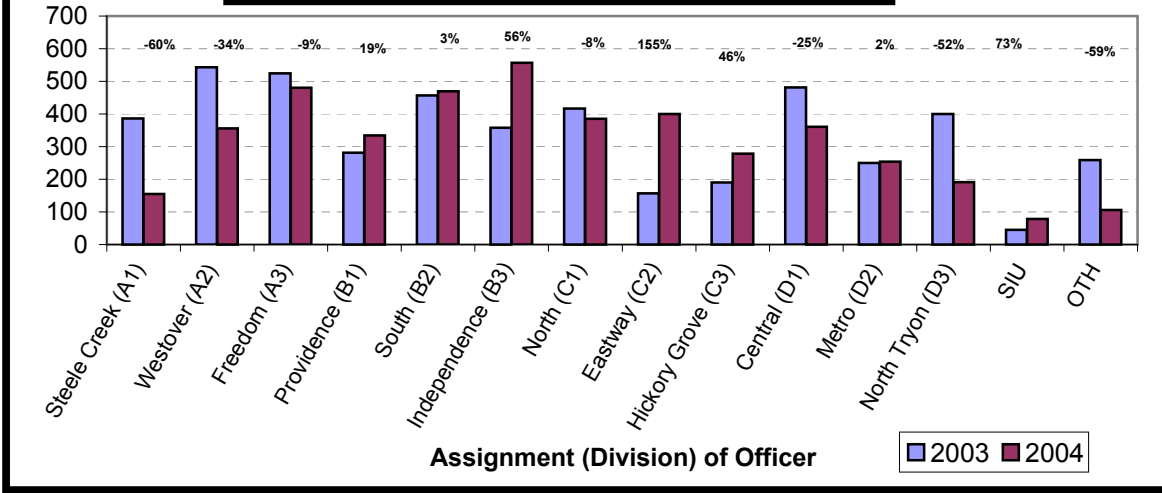


Note: 2003 and 2004 data for HITS and Other was adjusted in April, 2004.

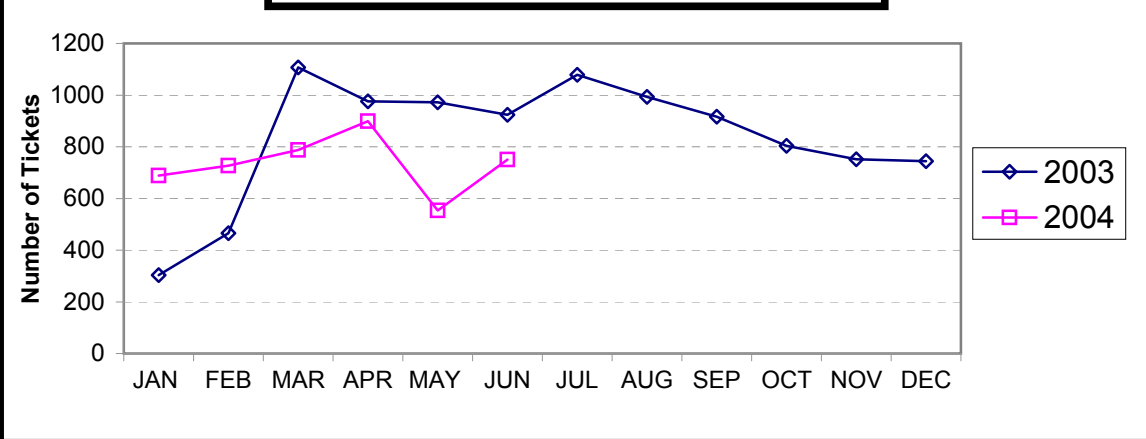
**Citations Issued by the Charlotte Mecklenburg Police Dept. Year-to-Date
(Through June, 2004)**

Total Citations	2003	2004	% Change
Hazardous	18,756	18,975	1.2%
Non-Hazardous	16,880	18,537	9.8%
Other City/State Statute/Ordinance	8,894	9,627	8.2%
Total	44,530	47,139	5.9%

**Warning Tickets Issued by CMPD Division
Year-to-Date, 2003 - 2004
Through June, 2004**



**Total Warning Tickets Issued by CMPD
By Month: 2003 - 2004**



**Warning Tickets Issued by CMPD Year-to-Date
Through June, 2004**

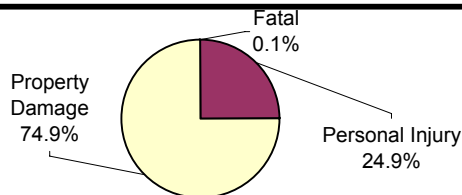
	2003	2004	% Change
Total Warning Tickets	4749	4405	-7.2%

**Traffic Collison Reports
Charlotte-Mecklenburg Police Department
Year-to-Date: 2003-2004
(Through June)**

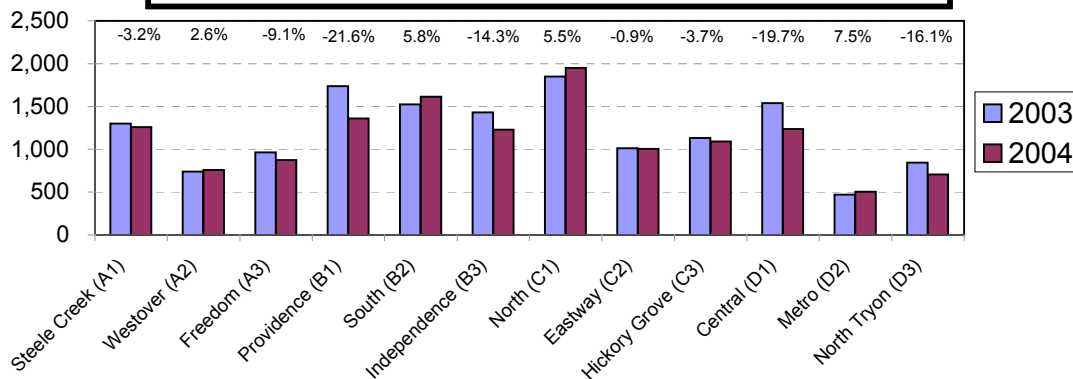
<u>Type</u>	<u>2003</u>	<u>2004</u>	<u>% Change</u>
Fatal Collisions	28	16	-42.9%
Vehicle Occupants Killed	29	14	-51.7%
Pedestrians Killed	3	3	0.0%
Personal Injury Collisions	3540	3389	-4.6%
Property Damage Collisions	11093	10233	-7.8%
Total Collisions	14661	13638	-7.0%

* The number of fatal collisions and the number of persons killed in those incidents is taken from the HITS file. Their records are updated for deaths that occur after the initial report is filed.

**Traffic Collisions Reported by Type
Charlotte-Mecklenburg Police Department:
2004 Year-to-Date
(Through June)**



**Traffic Collisions Reported by Charlotte-Mecklenburg Police Dept.
Year-to-Date By Location (Division) : 2003 -2004
(Through June)**



Uniform Crime Reporting Procedures:

The Charlotte-Mecklenburg Police Department reports offense and arrest statistics in accordance with standard Uniform Crime Reporting (UCR) guidelines. UCR policy states that any adjustments to previous months can be made on the current month's report:

...In tabulating crime counts, an agency may find that offense totals for past months require adjustments due to developments in the investigation or other handling of the matter. It may be necessary to adjust totals reported to UCR for the past month or prior months. Needed adjustments can be made on the current month's report and do not affect the reliability of the figures in that such adjustments tend to equalize each other from month to month over a period of time.

- *Uniform Crime Reporting Handbook*, FBI, 1984, p. 42-43

We are required to report crime monthly to the UCR program, and we do therefore make an effort to process monthly changes in a timely manner. However, occasionally due to the review and processing required for reclassifying, unfounding or clearing cases, the current month's totals may reflect the processing of a backlog of these changes from previous months.

Users of the data are cautioned that conclusions about substantial changes in crime trends or in clearance rates based on only a single month's data or trend may reflect some of these adjustments. For this reason, in addition to the monthly and year-to-date trends on Page 1, the monthly report routinely includes a comparison for the previous 12 months (p. 4), as well as graphs that provide seasonal/monthly comparisons over a five-year period (p. 5-8).

We make an effort to present the most accurate information available at the time this report is published. Please notify the Research, Planning, and Analysis office if you have any questions about the data in this report or an error that was missed in proofing the report.

The division names adopted in 2003 are used in this report. For ease of use, they also include the old district designations in parentheses.