



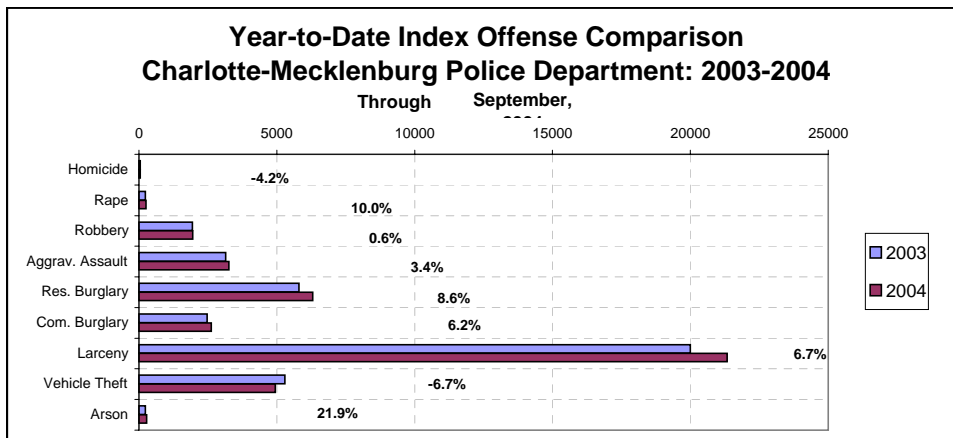
**CHARLOTTE-MECKLENBURG POLICE DEPARTMENT
MONTHLY SUMMARY REPORT
AUGUST, 2004**

**Darrel Stephens
Chief of Police**

INDEX OFFENSES REPORTED TO CHARLOTTE-MECKLENBURG POLICE DEPARTMENT

September, 2004 INDEX OFFENSES	# THIS MONTH	% OF ALL INDEX	# LAST MONTH	MONTHLY % CHANGE	SAME MONTH LAST YEAR	MONTHLY % CHANGE	THIS YEAR TO DATE	LAST YEAR TO DATE	ANNUAL % CHANGE
HOMICIDE (MURDER & NON- NEGLIGENT MANSLAUGHTER)	7	0.1%	4	75.0%	5	40.0%	46	48	-4.2%
RAPE TOTAL	27	0.6%	31	-12.9%	31	-12.9%	252	229	10.0%
ACTUAL	24	0.5%	29	-17.2%	25	-4.0%	233	200	16.5%
ATTEMPT	3	0.1%	2	50.0%	6	-50.0%	19	29	-34.5%
ROBBERY TOTAL	234	5.0%	254	-7.9%	193	21.2%	1954	1942	0.6%
ARMED	178	3.8%	211	-15.6%	154	15.6%	1516	1520	-0.3%
STRONG-ARM	56	1.2%	43	30.2%	39	43.6%	438	422	3.8%
AGGRAVATED ASSAULT TOTAL	356	7.6%	374	-4.8%	381	-6.6%	3256	3149	3.4%
BURGLARY TOTAL	1095	23.3%	1075	1.9%	934	17.2%	8925	8274	7.9%
RESIDENTIAL	808	17.2%	773	4.5%	706	14.4%	6298	5801	8.6%
COMMERCIAL *****	287	6.1%	302	-5.0%	228	25.9%	2627	2473	6.2%
FORCE	900	19.1%	904	-0.4%	736	22.3%	7224	6535	10.5%
NO FORCE	141	3.0%	113	24.8%	152	-7.2%	1187	1217	-2.5%
ATTEMPT	54	1.1%	58	-6.9%	46	17.4%	514	512	0.4%
LARCENY TOTAL	2339	49.8%	2458	-4.8%	2387	-2.0%	21330	19996	6.7%
\$200 AND OVER	1176	25.0%	1181	-0.4%	1227	-4.2%	10415	9995	4.2%
\$50 TO \$200	474	10.1%	442	7.2%	412	15.0%	3923	3561	10.2%
UNDER \$50 *****	689	14.7%	835	-17.5%	748	-7.9%	6992	6440	8.6%
FROM AUTO	1209	25.7%	1334	-9.4%	1290	-6.3%	10987	10627	3.4%
BICYCLE	24	0.5%	20	20.0%	33	-27.3%	184	175	5.1%
SHOPLIFTING	217	4.6%	245	-11.4%	219	-0.9%	2196	1982	10.8%
OTHERS	889	18.9%	859	3.5%	845	5.2%	7963	7212	10.4%
VEHICLE THEFT TOTAL	613	13.0%	636	-3.6%	517	18.6%	4944	5298	-6.7%
ARSON TOTAL	29	0.6%	28	3.6%	21	38.1%	278	228	21.9%
TOTALS	4700	100.0%	4860	-3.3%	4469	5.2%	40985	39164	4.6%
VIOLENT PROPERTY	624	13.3%	663	-5.9%	610	2.3%	5508	5368	2.6%
	4076	86.7%	4197	-2.9%	3859	5.6%	35477	33796	5.0%

NOTE: These totals include offenses reported to the Charlotte-Mecklenburg Police Department in accordance with the Uniform Crime Reporting Program. Totals for homicide do not include cases investigated by the police but classed by UCR guidelines as negligent manslaughter or as "justifiable homicide."

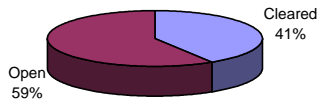


INDEX CLEARANCES REPORTED BY THE CHARLOTTE-MECKLENBURG POLICE DEPARTMENT

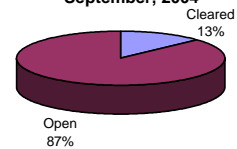
September, 2004 INDEX CLEARANCES	THIS MONTH:		LAST MONTH:		SAME MO. LAST YR:		THIS YEAR TO DATE:		LAST YEAR TO DATE:	
	NO.	%	NO.	%	NO.	%	NO.	%	NO.	%
MURDER & NON-NEGLIGENT MANSLAUGHTER	4	57.1%	1	25.0%	2	40.0%	19	41.3%	28	58.3%
RAPE TOTAL	6	22.2%	30	96.8%	13	41.9%	142	56.3%	167	72.9%
ACTUAL	4	16.7%	30	103.4%	12	48.0%	130	55.8%	147	73.5%
ATTEMPT	2	66.7%	0	0.0%	1	16.7%	12	63.2%	20	69.0%
ROBBERY TOTAL	31	13.2%	55	21.7%	27	14.0%	476	24.4%	430	22.1%
ARMED	18	10.1%	45	21.3%	18	11.7%	353	23.3%	294	19.3%
STRONG-ARM	13	23.2%	10	23.3%	9	23.1%	123	28.1%	136	32.2%
AGGRAVATED ASSAULT TOTAL	144	40.4%	260	69.5%	184	48.3%	1628	50.0%	1791	56.9%
BURGLARY TOTAL	129	11.8%	56	5.2%	71	7.6%	926	10.4%	1067	12.9%
RESIDENTIAL	107	13.2%	41	5.3%	60	8.5%	758	12.0%	712	12.3%
COMMERCIAL	22	7.7%	15	5.0%	11	4.8%	168	6.4%	355	14.4%
LARCENY TOTAL	361	15.4%	195	7.9%	204	8.5%	2785	13.1%	2718	13.6%
FROM AUTO	45	3.7%	27	2.0%	21	1.6%	315	2.9%	368	3.5%
BICYCLE	3	12.5%	0	0.0%	2	6.1%	13	7.1%	17	9.7%
SHOPLIFTING	167	77.0%	132	53.9%	105	47.9%	1358	61.8%	1152	58.1%
OTHERS	146	16.4%	36	4.2%	76	9.0%	1099	13.8%	1181	16.4%
VEHICLE THEFT TOTAL	103	16.8%	74	11.6%	86	16.6%	863	17.5%	1053	19.9%
ARSON TOTAL	11	37.9%	5	17.9%	6	28.6%	75	27.0%	62	27.2%
TOTALS	789	16.8%	676	13.9%	593	13.3%	6914	16.9%	7316	18.7%
VIOLENT PROPERTY	185	29.6%	346	52.2%	226	37.0%	2265	41.1%	2416	45.0%
	604	14.8%	330	7.9%	367	9.5%	4649	13.1%	4900	14.5%

NOTE: Clearances are reported in accordance with Uniform Crime Report guidelines. Since clearances are not counted until they are entered into the Records system, any delays in processing may result in some clearances being reported in succeeding months.

**Year-to-Date Violent Index Clearance Rate
Charlotte-Mecklenburg Police Department: 2004
September, 2004**

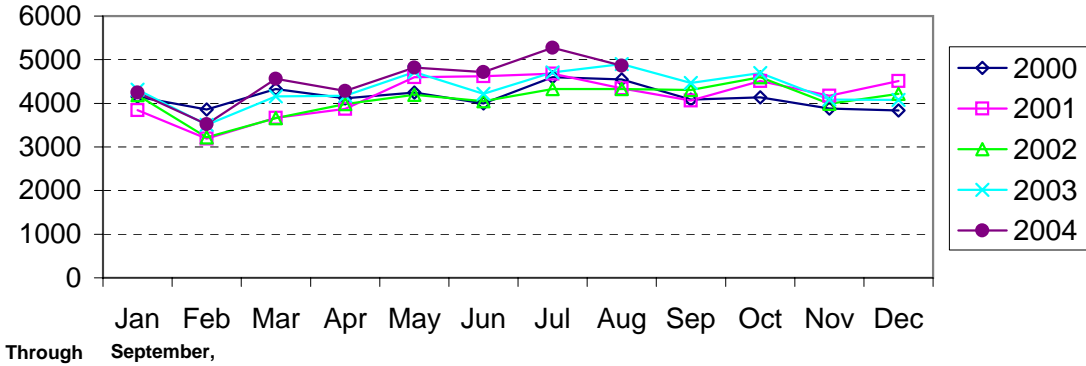


**Year-to-Date Property Index Clearance Rate
Charlotte-Mecklenburg Police Department: 2004
September, 2004**

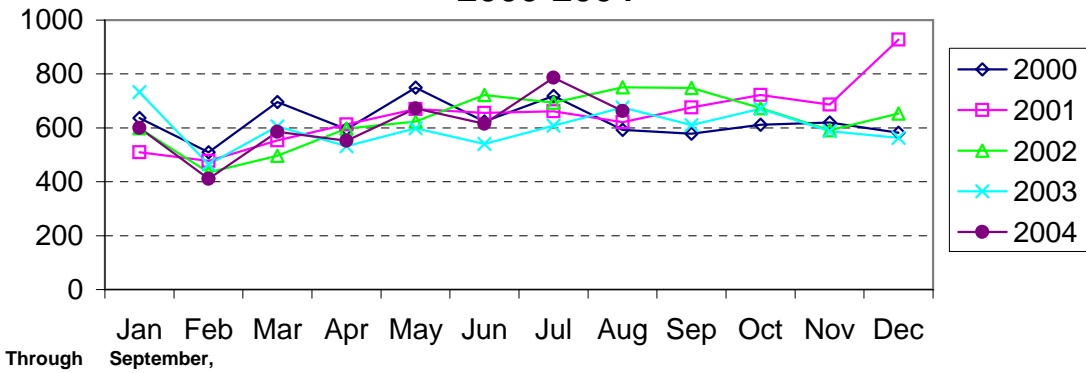


Clearance rates for crime reporting are calculated by dividing the number of crimes cleared during a designated time span by the number of crimes reported in the same period and converting the result to a percentage (multiplying by 100). Since cases from previous reporting periods can be cleared during the designated time span, the rate may be higher than 100%.

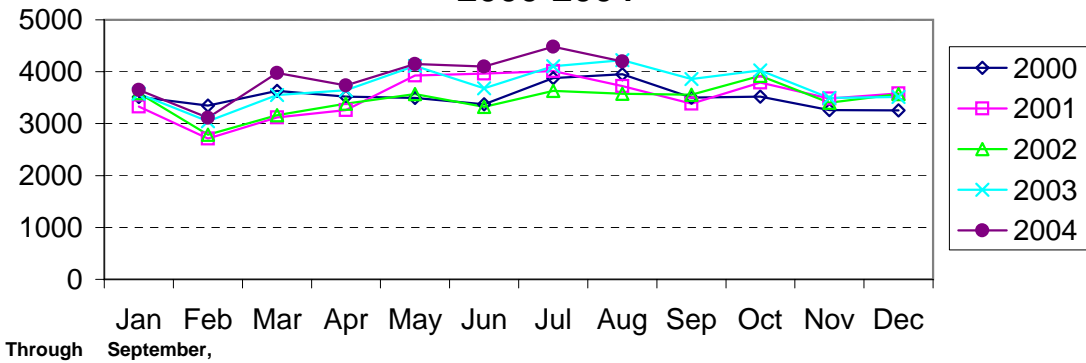
Index Offenses Reported by Month Charlotte-Mecklenburg Police Department: 2000-2004



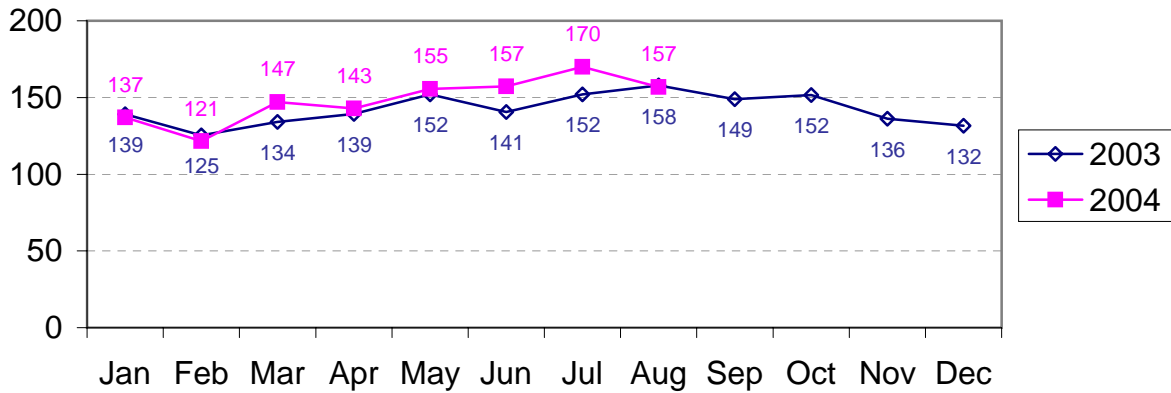
Violent Index Offenses Reported by Month Charlotte-Mecklenburg Police Department: 2000-2004



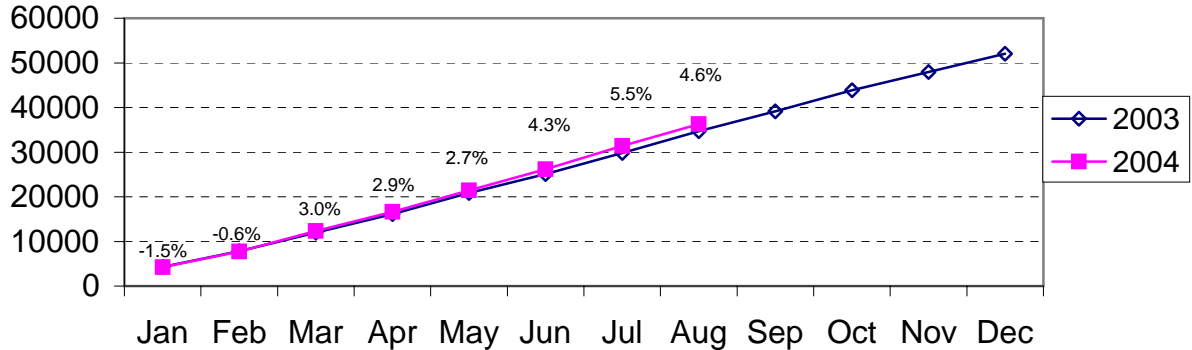
Property Index Offenses Reported by Month Charlotte-Mecklenburg Police Department: 2000-2004



Index Offense Per Day Average by Month Charlotte-Mecklenburg Police Department: 2003-2004

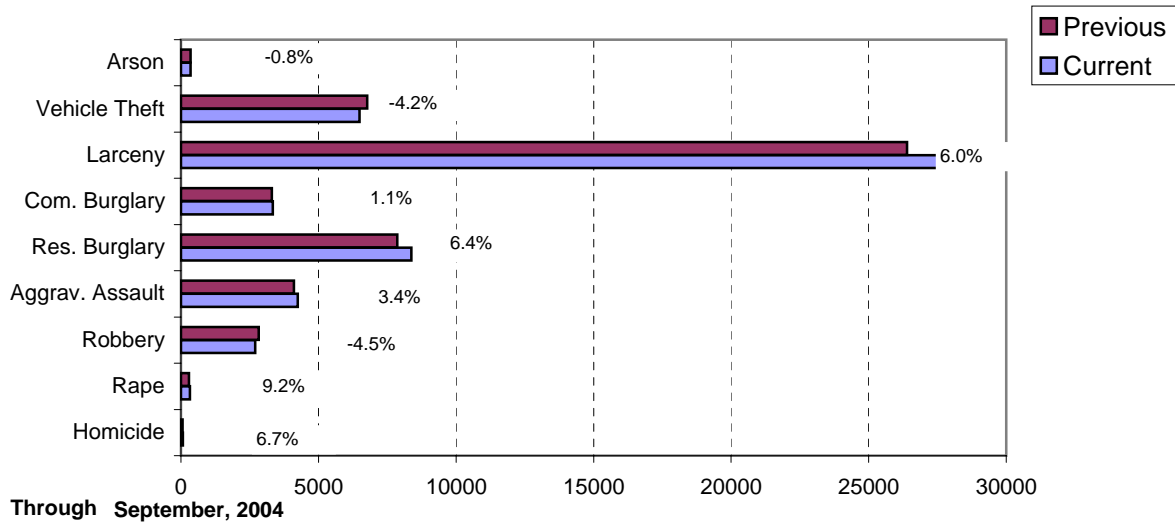


Index Offenses Year-to-Date Cumulative Totals Charlotte-Mecklenburg Police Department: 2002-2003

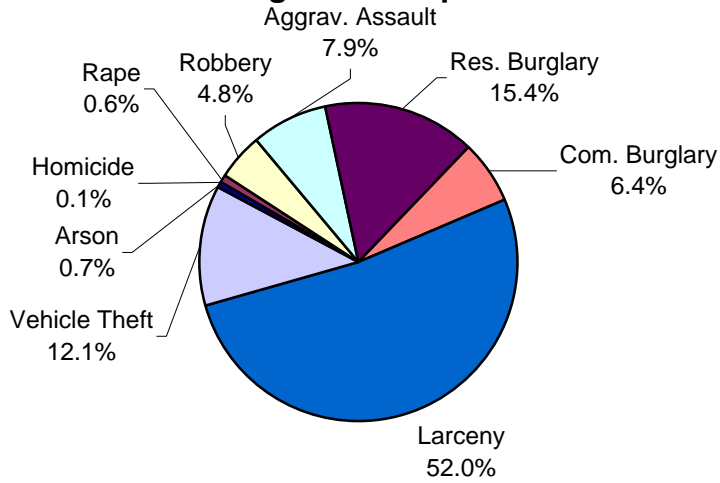


Through September,

Index Offenses in Current and Previous 12 Months Charlotte-Mecklenburg Police Department: 2003-2004

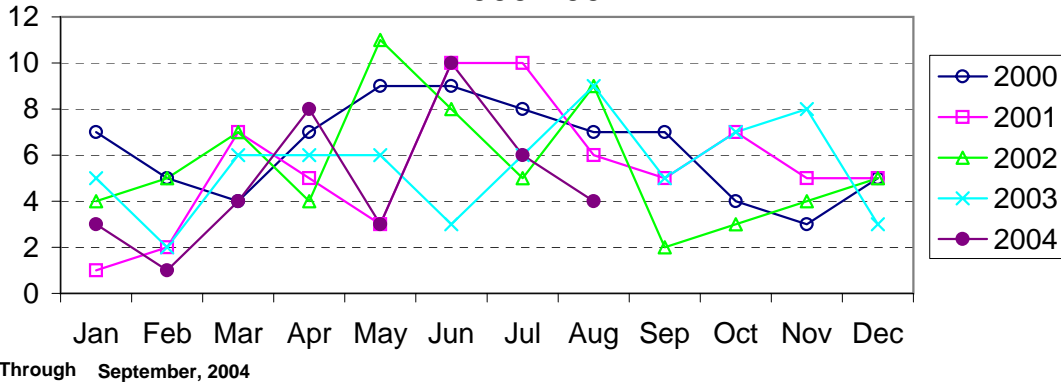


Year-to-Date Index Offenses by Type Charlotte-Mecklenburg Police Department: 2004

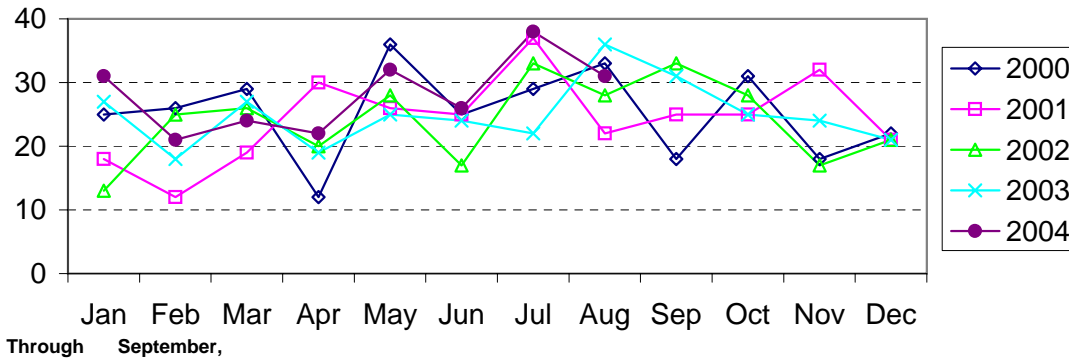


Through September,

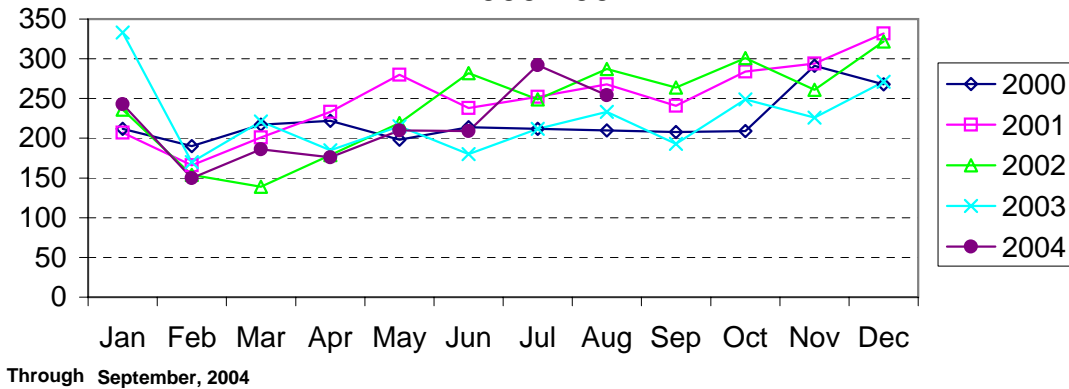
Homicide Reported by Month Charlotte-Mecklenburg Police Department: 2000-2004



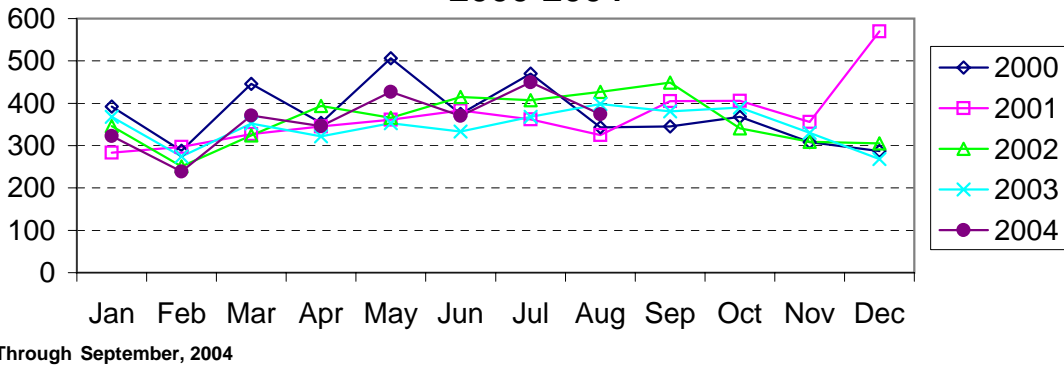
Rape Reported by Month Charlotte-Mecklenburg Police Department: 2000-2004



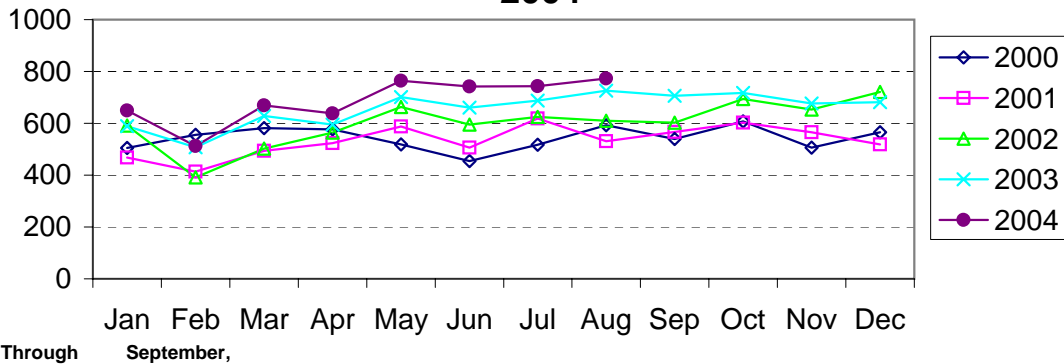
Robbery Reported by Month Charlotte-Mecklenburg Police Department: 2000-2004



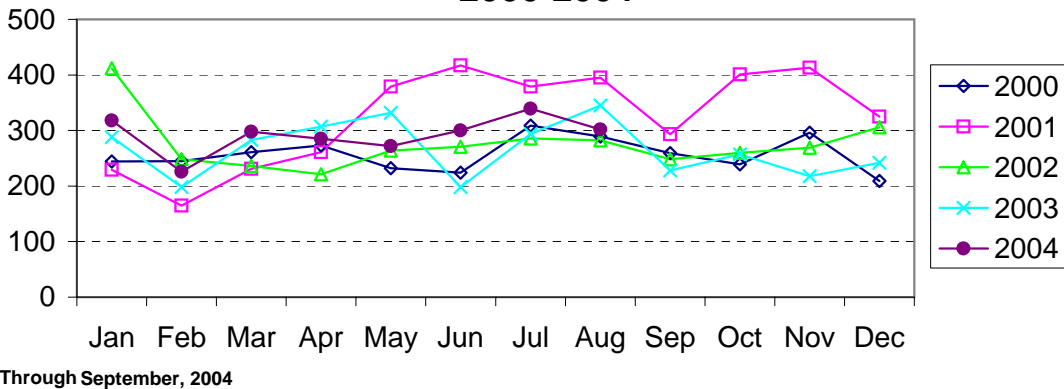
**Aggravated Assault Reported by Month
Charlotte-Mecklenburg Police Department:
2000-2004**



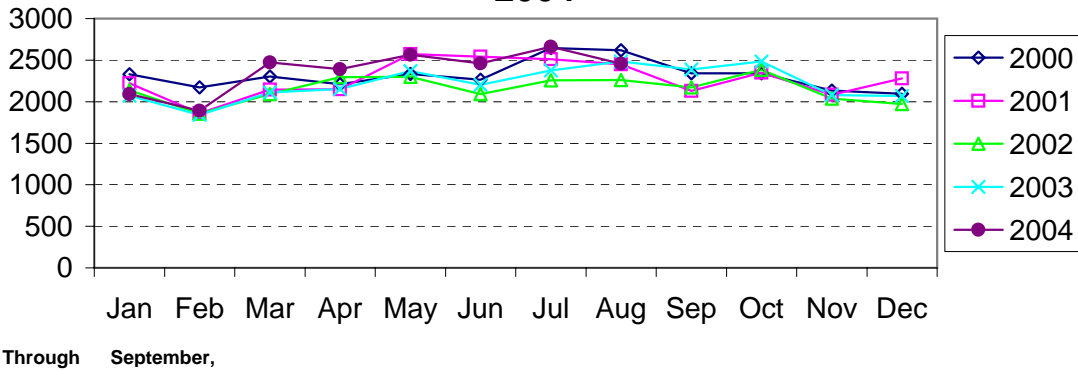
**Residential Burglary Reported by Month
Charlotte-Mecklenburg Police Department: 2000-
2004**



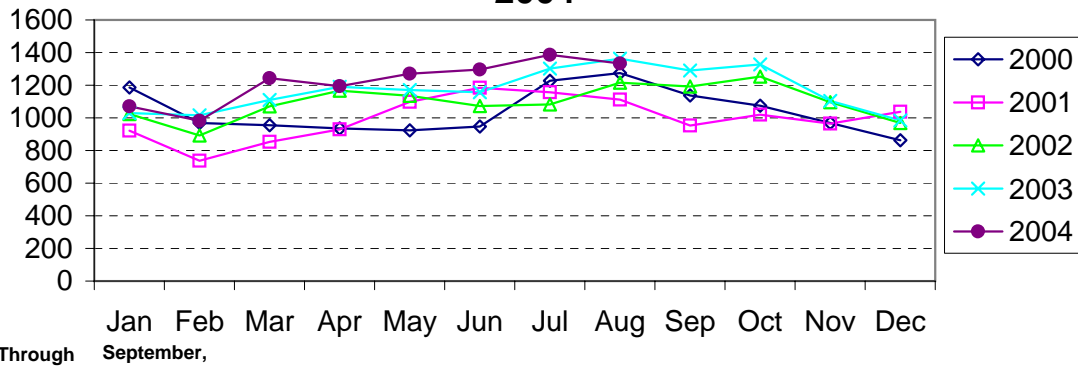
**Commercial Burglary Reported by Month
Charlotte-Mecklenburg Police Department:
2000-2004**



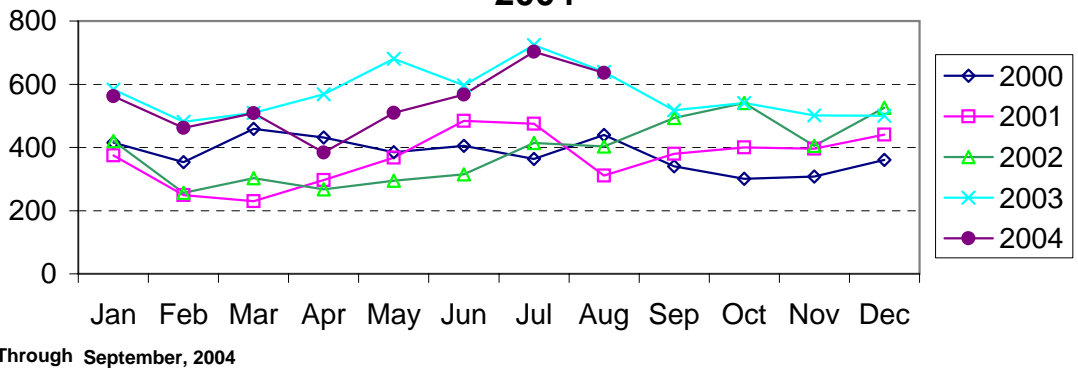
Larceny Reported by Month Charlotte-Mecklenburg Police Department: 2000-2004



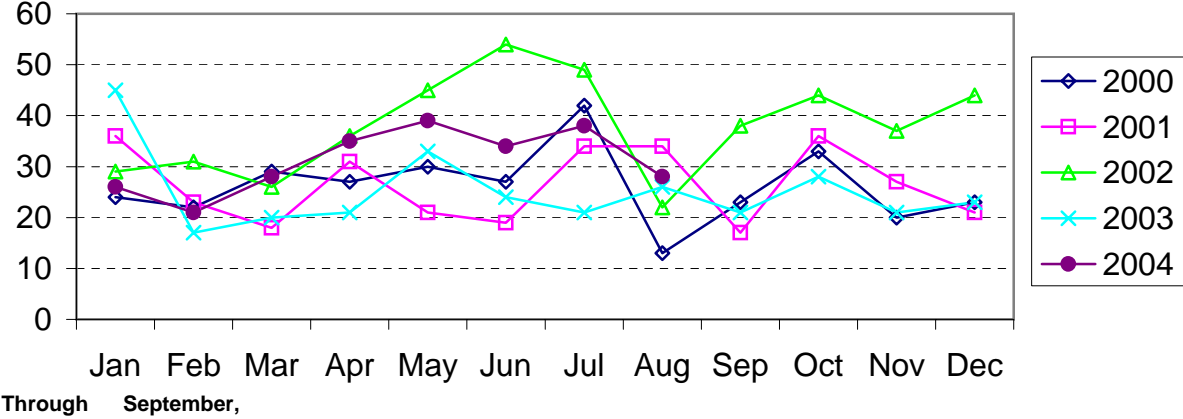
Larceny from Vehicle Reported by Month Charlotte-Mecklenburg Police Department: 2000-2004



Vehicle Theft Reported by Month Charlotte-Mecklenburg Police Department: 2000-2004



Arson Reported by Month Charlotte-Mecklenburg Police Department: 2000-2004



Index Offenses Reported by Division and Service Area of Occurrence									
West Service Area: Jan-Sep, 2003-2004									
INDEX_CATEGORIES	Westover (A2)			Freedom (A3)			West Service Area		
	2003	2004	% Change	2003	2004	% Change	2003	2004	% Change
MURDER & NON-NEGLIGENT MANSLAUGHTER	5	1	-80.0%	9	5	-44.4%	14	6	-57.1%
RAPE	18	22	22.2%	30	23	-23.3%	48	45	-6.3%
ACTUAL	17	22	29.4%	25	23	-8.0%	42	45	7.1%
ATTEMPTED	1	0	-100.0%	5	0	-100.0%	6	0	-100.0%
ROBBERY	172	152	-11.6%	185	213	15.1%	357	365	2.2%
ARMED	131	120	-8.4%	148	163	10.1%	279	283	1.4%
STRONG-ARM	41	32	-22.0%	37	50	35.1%	78	82	5.1%
AGGRAVATED ASSAULT	305	278	-8.9%	389	370	-4.9%	694	648	-6.6%
BURGLARY	633	654	3.3%	1032	1241	20.3%	1665	1895	13.8%
RESIDENTIAL	434	440	1.4%	686	866	26.2%	1120	1306	16.6%
COMMERCIAL	199	214	7.5%	346	375	8.4%	545	589	8.1%
LARCENY	1070	1314	22.8%	1708	1993	16.7%	2778	3307	19.0%
FROM AUTO	553	673	21.7%	817	943	15.4%	1370	1616	18.0%
BICYCLE	7	10	42.9%	11	11	0.0%	18	21	16.7%
SHOPLIFTING	103	105	1.9%	137	201	46.7%	240	306	27.5%
OTHERS	407	526	29.2%	743	838	12.8%	1150	1364	18.6%
VEHICLE THEFT	355	342	-3.7%	611	514	-15.9%	966	856	-11.4%
ARSON	15	23	53.3%	27	30	11.1%	42	53	26.2%
TOTALS	2573	2786	8.3%	3991	4389	10.0%	6564	7175	9.3%
VIOLENT	500	453	-9.4%	613	611	-0.3%	1113	1064	-4.4%
PROPERTY	2073	2333	12.5%	3378	3778	11.8%	5451	6111	12.1%

Index Offenses Reported by Division and Service Area of Occurrence									
Southeast Service Area: Jan-Sep, 2003-2004									
INDEX_CATEGORIES	Providence (B1)			Independence (B3)			Southeast Service Area		
	2003	2004	% Change	2003	2004	% Change	2003	2004	% Change
MURDER & NON-NEGLIGENT MANSLAUGHTER	0	3	NA	3	2	-33.3%	3	5	66.7%
RAPE	14	12	-14.3%	25	18	-28.0%	39	30	-23.1%
ACTUAL	13	11	-15.4%	22	17	-22.7%	35	28	-20.0%
ATTEMPTED	1	1	0.0%	3	1	-66.7%	4	2	-50.0%
ROBBERY	90	99	10.0%	156	163	4.5%	246	262	6.5%
ARMED	69	73	5.8%	134	134	0.0%	203	207	2.0%
STRONG-ARM	21	26	23.8%	23	29	26.1%	44	55	25.0%
AGGRAVATED ASSAULT	157	133	-15.3%	237	259	9.3%	394	392	-0.5%
BURGLARY	644	629	-2.3%	769	821	6.8%	1413	1450	2.6%
RESIDENTIAL	398	380	-4.5%	582	656	12.7%	980	1036	5.7%
COMMERCIAL	246	249	1.2%	187	165	-11.8%	433	414	-4.4%
LARCENY	1304	1482	13.7%	2189	1662	-24.1%	3493	3144	-10.0%
FROM AUTO	610	689	13.0%	1304	932	-28.5%	1914	1621	-15.3%
BICYCLE	12	15	25.0%	35	14	-60.0%	47	29	-38.3%
SHOPLIFTING	147	149	1.4%	183	130	-29.0%	330	279	-15.5%
OTHERS	535	629	17.6%	667	586	-12.1%	1202	1215	1.1%
VEHICLE THEFT	252	269	6.7%	530	484	-8.7%	782	753	-3.7%
ARSON	10	11	10.0%	29	25	-13.8%	39	36	-7.7%
TOTALS	2471	2638	6.8%	3938	3434	-12.8%	6409	6072	-5.3%
VIOLENT	261	247	-5.4%	421	442	5.0%	682	689	1.0%
PROPERTY	2210	2391	8.2%	3517	2992	-14.9%	5727	5383	-6.0%

The data in the district breakdowns does not include a small number of offenses in which the location of the offense was unknown or was entered without a valid tract assignment. Districts are not equal in geographic size, demographics, zoning/development, and other factors that influence the rate of crimes committed in an area. Therefore, the comparison of raw offense totals across districts is not advisable.

Index Offenses Reported by Division and Service Area of Occurrence									
Northeast Service Area: Jan-Sep, 2003-2004									
INDEX_CATEGORIES	North (C1)			Hickory Grove (C3)			Northeast Service Area		
	2003	2004	% Change	2003	2004	% Change	2003	2004	% Change
MURDER & NON-NEGLIGENT MANSLAUGHTER	4	4	0.0%	5	2	-60.0%	9	6	-33.3%
RAPE	24	34	41.7%	20	30	50.0%	44	64	45.5%
ACTUAL	21	32	52.4%	15	26	73.3%	36	58	61.1%
ATTEMPTED	3	2	-33.3%	5	4	-20.0%	8	6	-25.0%
ROBBERY	137	183	33.6%	190	175	-7.9%	327	358	9.5%
ARMED	107	146	36.4%	148	143	-3.4%	255	289	13.3%
STRONG-ARM	30	37	23.3%	42	32	-23.8%	72	69	-4.2%
AGGRAVATED ASSAULT	248	282	13.7%	303	340	12.2%	551	622	12.9%
BURGLARY	937	1194	27.4%	828	895	8.1%	1765	2089	18.4%
RESIDENTIAL	665	848	27.5%	630	722	14.6%	1295	1570	21.2%
COMMERCIAL	272	346	27.2%	198	173	-12.6%	470	519	10.4%
LARCENY	2950	3189	8.1%	1731	1634	-5.6%	4681	4823	3.0%
FROM AUTO	1721	1809	5.1%	923	826	-10.5%	2644	2635	-0.3%
BICYCLE	10	16	60.0%	24	33	37.5%	34	49	44.1%
SHOPLIFTING	248	274	10.5%	162	123	-24.1%	410	397	-3.2%
OTHERS	971	1090	12.3%	622	652	4.8%	1593	1742	9.4%
VEHICLE THEFT	609	643	5.6%	633	535	-15.5%	1242	1178	-5.2%
ARSON	27	38	40.7%	28	38	35.7%	55	76	38.2%
TOTALS	4936	5567	12.8%	3738	3649	-2.4%	8674	9216	6.2%
VIOLENT	413	503	21.8%	518	547	5.6%	931	1050	12.8%
PROPERTY	4523	5064	12.0%	3220	3102	-3.7%	7743	8166	5.5%

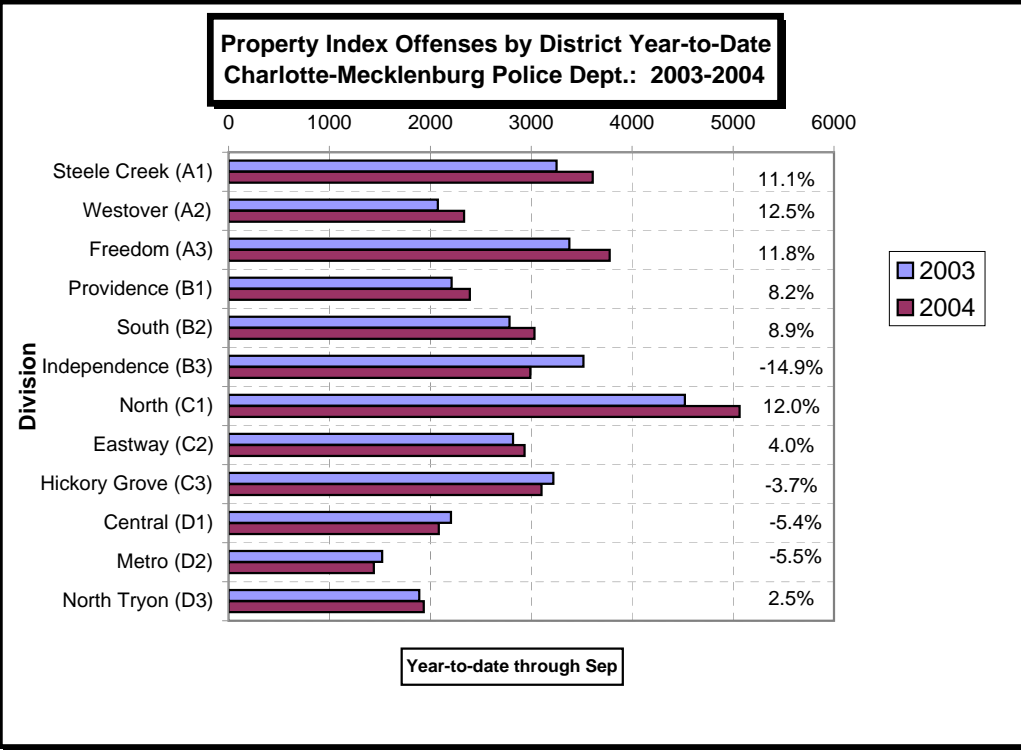
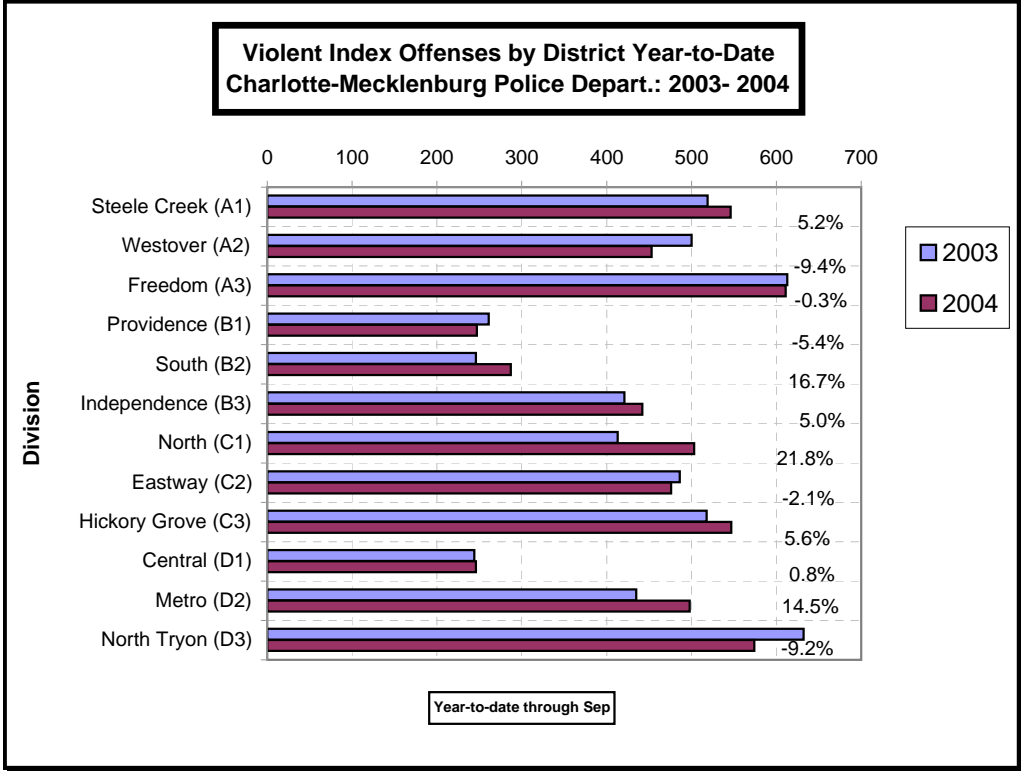
Index Offenses Reported by Division and Service Area of Occurrence									
Central Service Area: Jan-Sep, 2003-2004									
INDEX_CATEGORIES	Central (D1)			Metro (D2)			Central Service Area		
	2003	2004	% Change	2003	2004	% Change	2003	2004	% Change
MURDER & NON-NEGLIGENT MANSLAUGHTER	2	1	-50.0%	4	7	75.0%	6	8	33.3%
RAPE	12	15	25.0%	15	20	33.3%	27	35	29.6%
ACTUAL	12	14	16.7%	13	19	46.2%	25	33	32.0%
ATTEMPTED	0	1	NA	2	1	-50.0%	2	2	0.0%
ROBBERY	90	97	7.8%	131	155	18.3%	221	252	14.0%
ARMED	56	58	3.6%	101	130	28.7%	157	188	19.7%
STRONG-ARM	34	39	14.7%	30	25	-16.7%	64	64	0.0%
AGGRAVATED ASSAULT	140	133	-5.0%	285	316	10.9%	425	449	5.6%
BURGLARY	307	283	-7.8%	418	465	11.2%	725	748	3.2%
RESIDENTIAL	164	111	-32.3%	317	340	7.3%	481	451	-6.2%
COMMERCIAL	143	172	20.3%	101	125	23.8%	244	297	21.7%
LARCENY	1516	1563	3.1%	778	722	-7.2%	2294	2285	-0.4%
FROM AUTO	882	853	-3.3%	436	324	-25.7%	1318	1177	-10.7%
BICYCLE	7	15	114.3%	13	6	-53.8%	20	21	5.0%
SHOPLIFTING	46	51	10.9%	27	53	96.3%	73	104	42.5%
OTHERS	581	644	10.8%	302	339	12.3%	883	983	11.3%
VEHICLE THEFT	369	235	-36.3%	313	240	-23.3%	682	475	-30.4%
ARSON	12	3	-75.0%	14	12	-14.3%	26	15	-42.3%
TOTALS	2448	2330	-4.8%	1958	1937	-1.1%	4406	4267	-3.2%
VIOLENT	244	246	0.8%	435	498	14.5%	679	744	9.6%
PROPERTY	2204	2084	-5.4%	1523	1439	-5.5%	3727	3523	-5.5%

The data in the district breakdowns does not include a small number of offenses in which the location of the offense was unknown or was entered without a valid tract assignment. Districts are not equal in geographic size, demographics, zoning/development, and other factors that influence the rate of crimes committed in an area. Therefore, the comparison of raw offense totals across districts is not advisable.

Index Offenses Reported by Division and Service Area of Occurrence									
East Service Area: Jan-Sep, 2003-2004									
INDEX_CATEGORIES	Eastway (C2)			North Tryon (D3)			East Service Area		
	2003	2004	% Change	2003	2004	% Change	2003	2004	% Change
MURDER & NON-NEGLIGENT MANSLAUGHTER	2	5	150.0%	6	7	16.7%	8	12	50.0%
RAPE	15	17	13.3%	16	15	-6.3%	31	32	3.2%
ACTUAL	14	14	0.0%	16	14	-12.5%	30	28	-6.7%
ATTEMPTED	1	3	200.0%	0	1	NA	1	4	300.0%
ROBBERY	235	205	-12.8%	236	209	-11.4%	471	414	-12.1%
ARMED	180	153	-15.0%	193	159	-17.6%	373	312	-16.4%
STRONG-ARM	55	52	-5.5%	43	50	16.3%	98	102	4.1%
AGGRAVATED ASSAULT	234	249	6.4%	374	343	-8.3%	608	592	-2.6%
BURGLARY	691	734	6.2%	559	556	-0.5%	1250	1290	3.2%
RESIDENTIAL	505	533	5.5%	375	367	-2.1%	880	900	2.3%
COMMERCIAL	186	201	8.1%	184	189	2.7%	370	390	5.4%
LARCENY	1718	1758	2.3%	888	1023	15.2%	2606	2781	6.7%
FROM AUTO	763	633	-17.0%	458	496	8.3%	1221	1129	-7.5%
BICYCLE	14	21	50.0%	10	8	-20.0%	24	29	20.8%
SHOPLIFTING	414	586	41.5%	59	84	42.4%	473	670	41.6%
OTHERS	527	518	-1.7%	361	435	20.5%	888	953	7.3%
VEHICLE THEFT	400	416	4.0%	432	348	-19.4%	832	764	-8.2%
ARSON	11	24	118.2%	10	9	-10.0%	21	33	57.1%
TOTALS	3306	3408	3.1%	2521	2510	-0.4%	5827	5918	1.6%
VIOLENT	486	476	-2.1%	632	574	-9.2%	1118	1050	-6.1%
PROPERTY	2820	2932	4.0%	1889	1936	2.5%	4709	4868	3.4%

Index Offenses Reported by Division and Service Area of Occurrence									
South Service Area: Jan-Sep, 2003-2004									
INDEX_CATEGORIES	Steele Creek (A1)			South (B2)			South Service Area		
	2003	2004	% Change	2003	2004	% Change	2003	2004	% Change
MURDER & NON-NEGLIGENT MANSLAUGHTER	4	8	100.0%	4	1	-75.0%	8	9	12.5%
RAPE	21	19	-9.5%	16	16	0.0%	37	35	-5.4%
ACTUAL	16	17	6.3%	14	13	-7.1%	30	30	0.0%
ATTEMPTED	5	2	-60.0%	2	3	50.0%	7	5	-28.6%
ROBBERY	206	175	-15.0%	91	102	12.1%	297	277	-6.7%
ARMED	157	139	-11.5%	69	78	13.0%	226	217	-4.0%
STRONG-ARM	39	36	-7.7%	22	24	9.1%	61	60	-1.6%
AGGRAVATED ASSAULT	288	344	19.4%	135	168	24.4%	423	512	21.0%
BURGLARY	669	649	-3.0%	690	633	-8.3%	1359	1282	-5.7%
RESIDENTIAL	447	449	0.4%	539	492	-8.7%	986	941	-4.6%
COMMERCIAL	222	200	-9.9%	151	141	-6.6%	373	341	-8.6%
LARCENY	2100	2473	17.8%	1806	2016	11.6%	3906	4489	14.9%
FROM AUTO	1018	1395	37.0%	1016	1147	12.9%	2034	2542	25.0%
BICYCLE	17	21	23.5%	14	13	-7.1%	31	34	9.7%
SHOPLIFTING	312	306	-1.9%	123	116	-5.7%	435	422	-3.0%
OTHERS	753	751	-0.3%	653	740	13.3%	1406	1491	6.0%
VEHICLE THEFT	460	455	-1.1%	271	353	30.3%	731	808	10.5%
ARSON	20	32	60.0%	17	29	70.6%	37	61	64.9%
TOTALS	3768	4155	10.3%	3030	3318	9.5%	6798	7473	9.9%
VIOLENT	519	546	5.2%	246	287	16.7%	765	833	8.9%
PROPERTY	3249	3609	11.1%	2784	3031	8.9%	6033	6640	10.1%

The data in the district breakdowns does not include a small number of offenses in which the location of the offense was unknown or was entered without a valid tract assignment. Districts are not equal in geographic size, demographics, zoning/development, and other factors that influence the rate of crimes committed in an area. Therefore, the comparison of raw offense totals across districts is not advisable.



The data in the district breakdowns does not include a small number of offenses in which the location of the offense was unknown or was entered without a valid tract assignment. Districts are not equal in geographic size, demographics, zoning/development, and other factors that influence the rate of crimes committed in an area. Therefore, the comparison of raw offense totals across districts is not advisable.

Arrests by Charlotte-Mecklenburg Police Department
Year-To-Date: 2003-2004
(Through September)

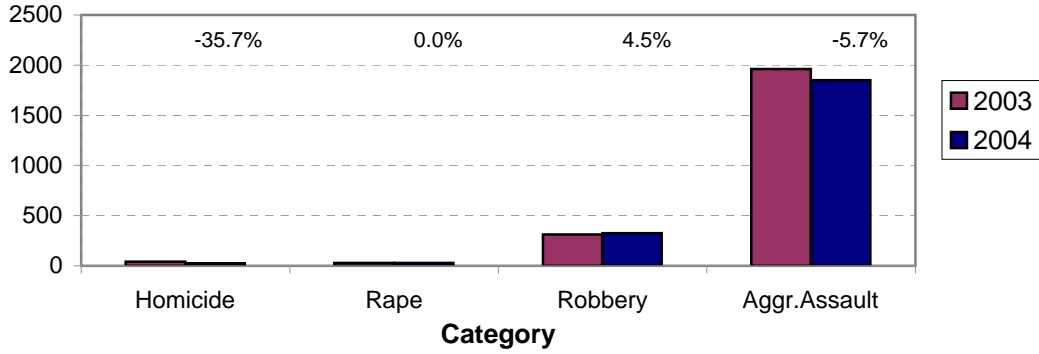
CATEGORY	ADULTS (AGE 18 & OLDER):			JUVENILES (UNDER 18):			TOTAL ARRESTS:		
	2003 Y-T-D	2004 Y-T-D	% CHANGE	2003 Y-T-D	2004 Y-T-D	% CHANGE	2003 Y-T-D	2004 Y-T-D	% CHANGE
Murder/Non-Negligent Manslaughter	38	27	-28.9%	4	0	-100.0%	42	27	-35.7%
Negligent & Vehicular Manslaughter	1	4	300.0%	0	0	NA	1	4	300.0%
Rape	23	27	17.4%	6	2	-66.7%	29	29	0.0%
Robbery	224	221	-1.3%	88	105	19.3%	312	326	4.5%
Aggravated Assault	1704	1605	-5.8%	256	244	-4.7%	1960	1849	-5.7%
Burglary	380	441	16.1%	181	165	-8.8%	561	606	8.0%
Larceny	1108	1201	8.4%	499	460	-7.8%	1607	1661	3.4%
Vehicle Theft	113	60	-46.9%	293	120	-59.0%	406	180	-55.7%
Non-Aggravated Assault	1294	1403	8.4%	653	616	-5.7%	1947	2019	3.7%
Arson	16	14	-12.5%	19	25	31.6%	35	39	11.4%
Forgery/Counterfiet	89	106	19.1%	3	2	-33.3%	92	108	17.4%
Fraud	414	419	1.2%	7	7	0.0%	421	426	1.2%
Embezzlement	75	72	-4.0%	4	12	200.0%	79	84	6.3%
Stolen Property	407	393	-3.4%	116	75	-35.3%	523	468	-10.5%
Vandalism	193	166	-14.0%	152	157	3.3%	345	323	-6.4%
Weapons	374	332	-11.2%	54	49	-9.3%	428	381	-11.0%
Prostitution	256	278	8.6%	2	8	300.0%	258	286	10.9%
Sex Offenses	164	157	-4.3%	37	16	-56.8%	201	173	-13.9%
Drugs	2411	2028	-15.9%	232	191	-17.7%	2643	2219	-16.0%
Gambling	22	12	-45.5%	0	0	NA	22	12	-45.5%
Offenses vs. Family	7	4	-42.9%	0	1	NA	7	5	-28.6%
DUI	1562	1465	-6.2%	9	8	-11.1%	1571	1473	-6.2%
Liquor	124	159	28.2%	10	6	-40.0%	134	165	23.1%
Disorder.Conduct	433	429	-0.9%	212	227	7.1%	645	656	1.7%
Other Non-Traffic	5690	6085	6.9%	582	573	-1.5%	6272	6658	6.2%
VIOLENT INDEX¹	1989	1880	-5.5%	354	351	-0.8%	2343	2231	-4.8%
PROPERTY INDEX²	1617	1716	6.1%	992	770	-22.4%	2609	2486	-4.7%
INDEX SUBTOTAL	3606	3596	-0.3%	1346	1121	-16.7%	4952	4717	-4.7%
PART 2 SUBTOTAL³	13516	13512	0.0%	2073	1948	-6.0%	15589	15460	-0.8%
TOTAL	17122	17108	-0.1%	3419	3069	-10.2%	20541	20177	-1.8%

¹Violent Index includes murder and non-negligent manslaughter, rape, robbery, and aggravated assault.

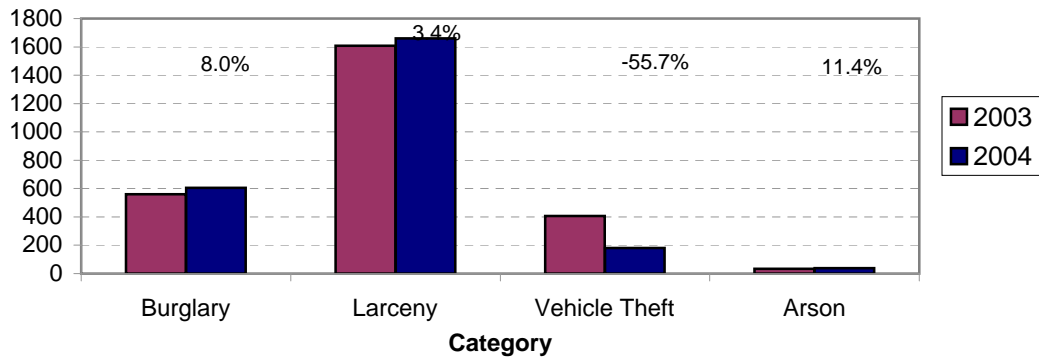
²Property Index includes burglary, larceny, vehicle theft, and arson.

³Part 2 crimes include non-traffic crimes not counted in the Index totals.

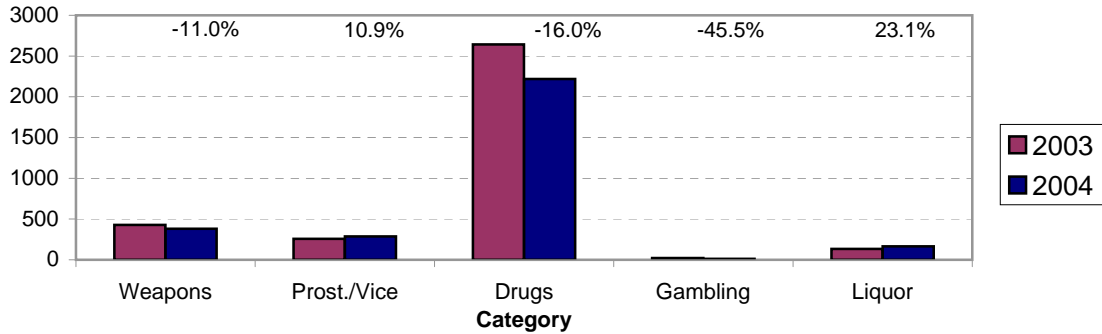
**Violent Index Arrests Year-to-Date
Charlotte-Mecklenburg Police Department: 2003-2004
(Through September)**



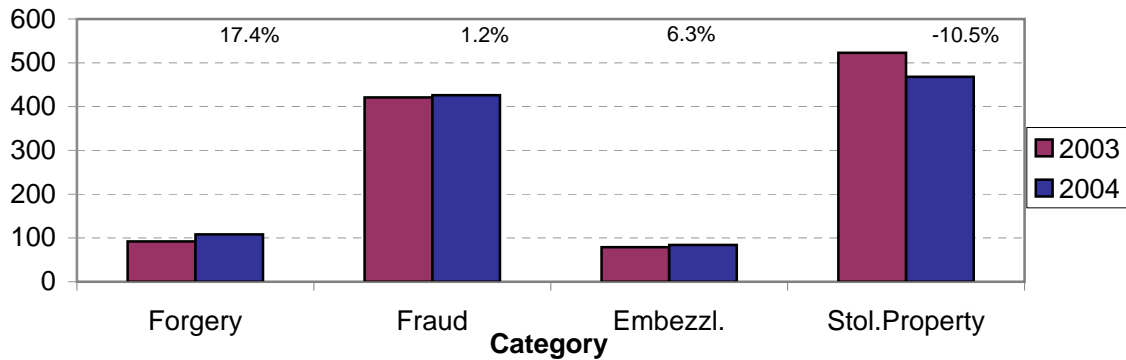
**Property Index Arrests Year-to-Date
Charlotte-Mecklenburg Police Department: 2003-2004
(Through September)**



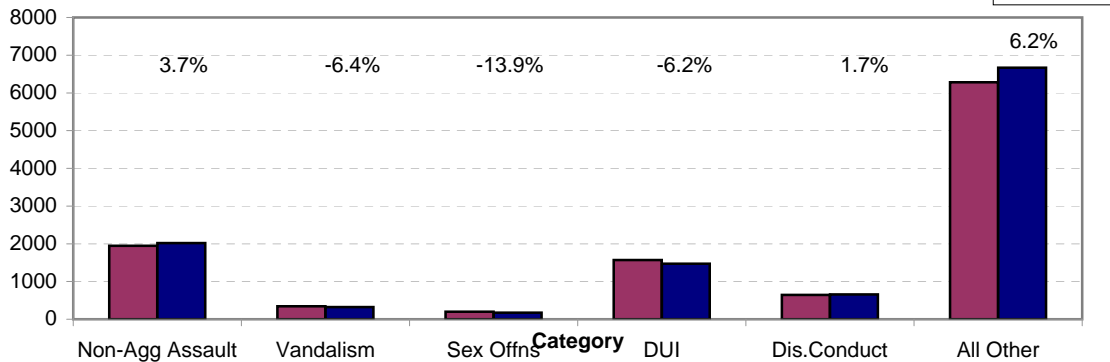
**Arrests for Vice/CCW/Drugs/Etc. Year-to-Date
Charlotte-Mecklenburg Police Department: 2003 - 2004
(Through September)**



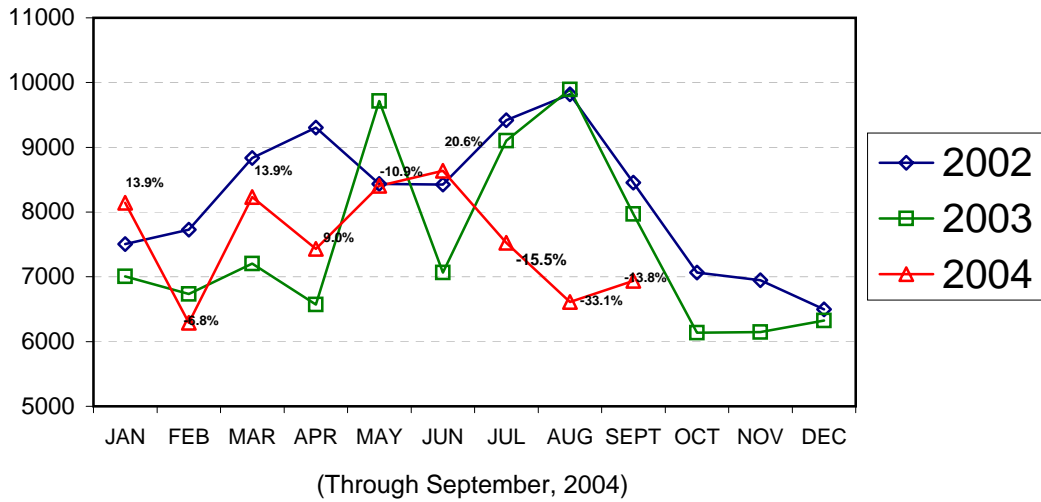
**Arrests for Property/White Collar Crime Year-to-Date
Charlotte-Mecklenburg Police Department: 2003 - 2004
(Through September)**



**Arrests for Other Categories Year-to-Date
Charlotte-Mecklenburg Police Department: 2003 - 2004
(Through September)**

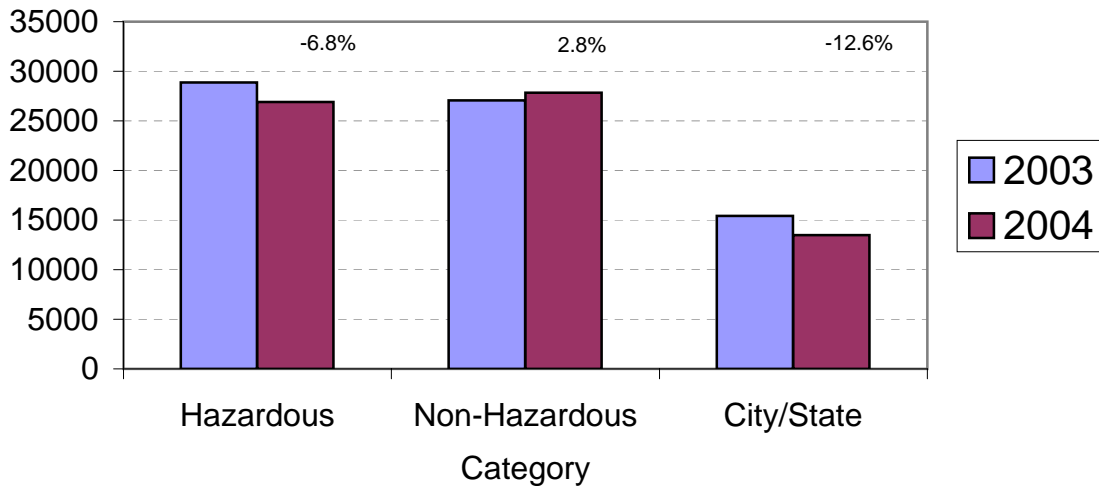


Total Citation Enforcement by Month Charlotte-Mecklenburg Police Dept.: 2002-2004

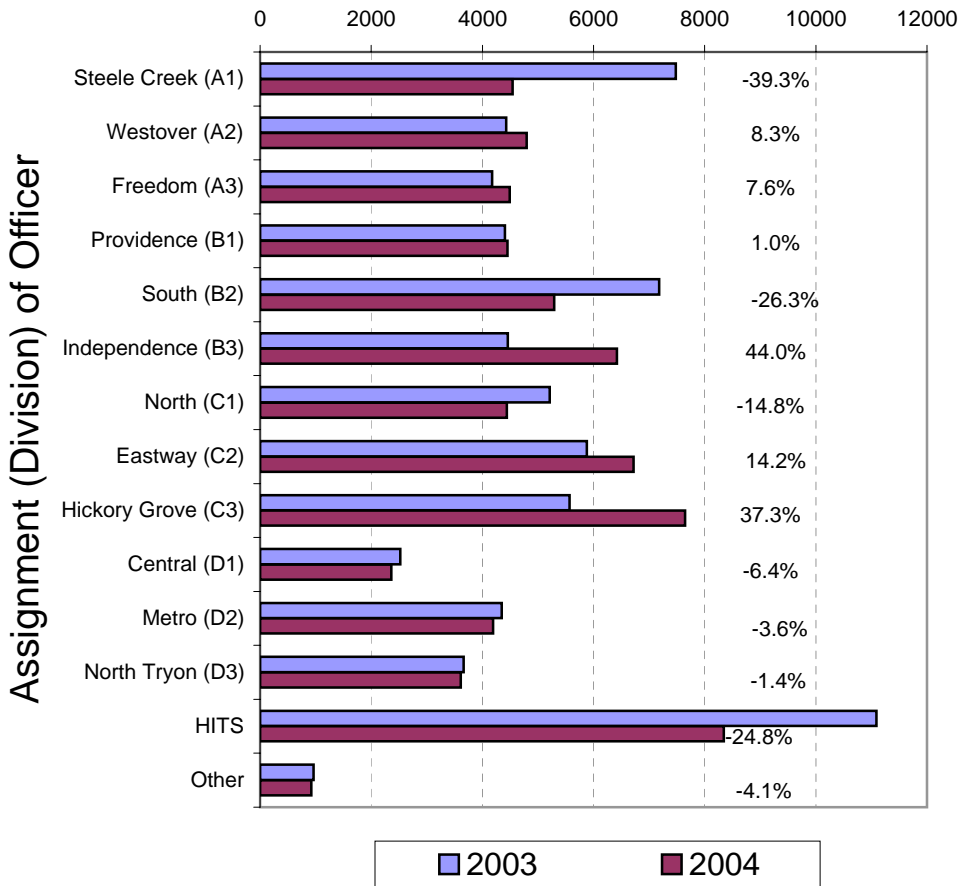


(Includes Hazardous, Non-Hazardous, and City/State Citations)

CMPD Citation Enforcement by Category Year-to-Date, 2003 - 2004 (Through September, 2004)



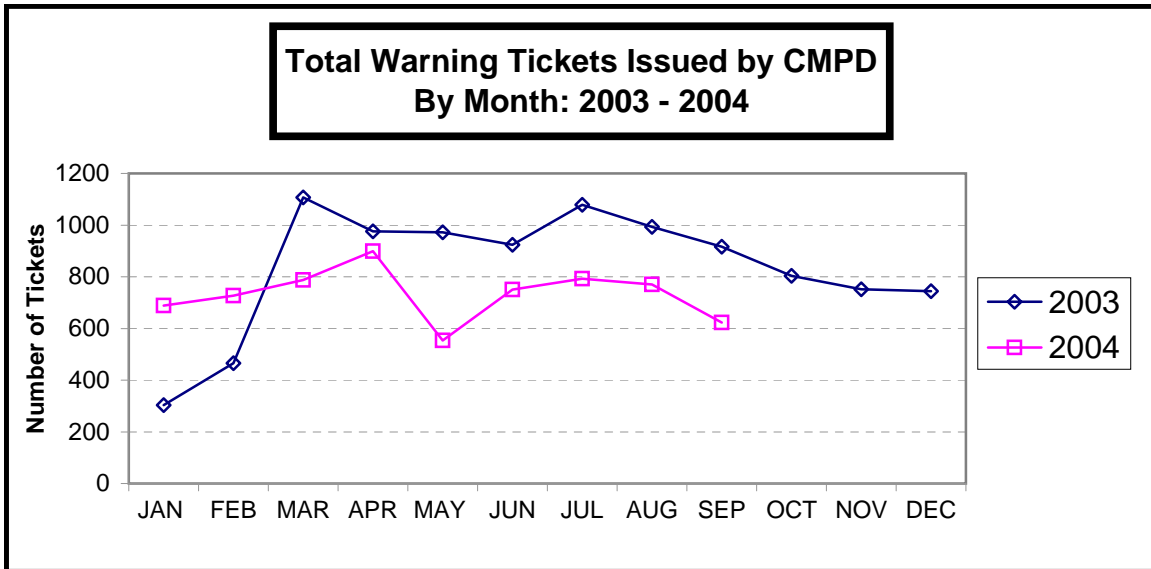
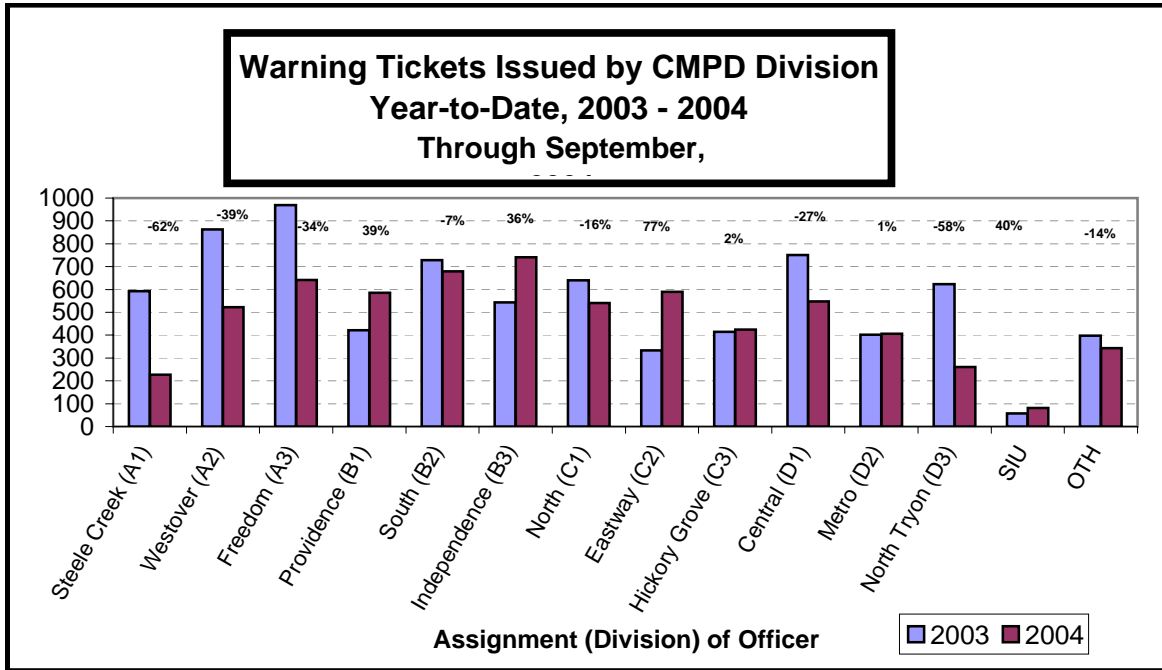
**Citations Issued Year-to-Date by CMPD Divisions
2003 - 2004
(Through September, 2004)**



Note: 2003 and 2004 data for HITS and Other was adjusted in April, 2004.

**Citations Issued by the Charlotte Mecklenburg Police Dept. Year-to-Date
(Through September, 2004)**

Total Citations	2003	2004	% Change
Hazardous	28,860	26,891	-6.8%
Non-Hazardous	27,076	27,839	2.8%
Other City/State Statute/Ordinance	15,425	13,480	-12.6%
Total	71,361	68,210	-4.4%



Warning Tickets Issued by CMPD Year-to-Date Through September, 2004

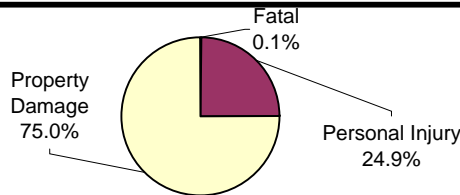
	2003	2004	% Change
Total Warning Tickets	7737	6590	-14.8%

**Traffic Collison Reports
Charlotte-Mecklenburg Police Department
Year-to-Date: 2003-2004
(Through September)**

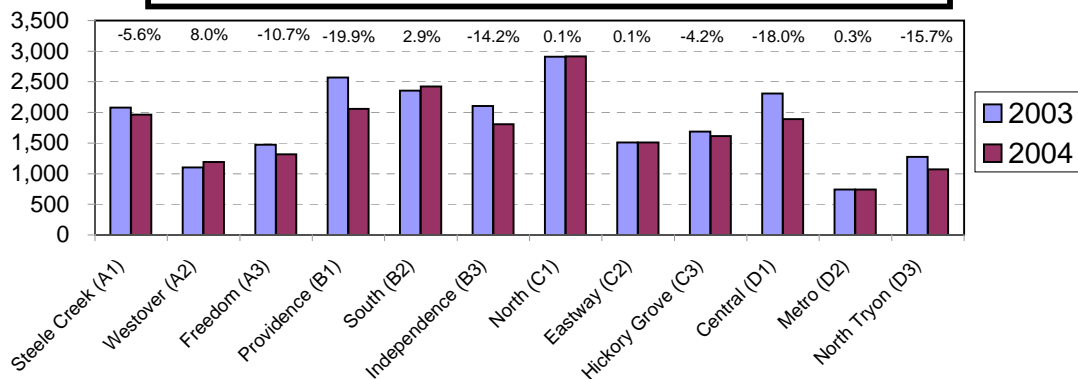
<u>Type</u>	<u>2003</u>	<u>2004</u>	<u>% Change</u>
Fatal Collisions	38	29	-23.7%
Vehicle Occupants Killed	38	26	-31.6%
Pedestrians Killed	5	4	-20.0%
Personal Injury Collisions	5509	5096	-7.6%
Property Damage Collisions	16692	15426	-7.6%
Total Collisions	22239	20551	-7.6%

* The number of fatal collisions and the number of persons killed in those incidents is taken from the HITS file. Their records are updated for deaths that occur after the initial report is filed.

**Traffic Collisions Reported by Type
Charlotte-Mecklenburg Police Department:
2004 Year-to-Date
(Through September)**



**Traffic Collisions Reported by Charlotte-Mecklenburg Police Dept.
Year-to-Date By Location (Division) : 2003 -2004
(Through September)**



Uniform Crime Reporting Procedures:

The Charlotte-Mecklenburg Police Department reports offense and arrest statistics in accordance with standard Uniform Crime Reporting (UCR) guidelines. UCR policy states that any adjustments to previous months can be made on the current month's report:

...In tabulating crime counts, an agency may find that offense totals for past months require adjustments due to developments in the investigation or other handling of the matter. It may be necessary to adjust totals reported to UCR for the past month or prior months. Needed adjustments can be made on the current month's report and do not affect the reliability of the figures in that such adjustments tend to equalize each other from month to month over a period of time.

- *Uniform Crime Reporting Handbook*, FBI, 1984, p. 42-43

We are required to report crime monthly to the UCR program, and we do therefore make an effort to process monthly changes in a timely manner. However, occasionally due to the review and processing required for reclassifying, unfounding or clearing cases, the current month's totals may reflect the processing of a backlog of these changes from previous months.

Users of the data are cautioned that conclusions about substantial changes in crime trends or in clearance rates based on only a single month's data or trend may reflect some of these adjustments. For this reason, in addition to the monthly and year-to-date trends on Page 1, the monthly report routinely includes a comparison for the previous 12 months (p. 4), as well as graphs that provide seasonal/monthly comparisons over a five-year period (p. 5-8).

This report was compiled with data entry assistance from Sandy Johnson in the Research, Planning, and Analysis Division.

We make an effort to present the most accurate information available at the time this report is published. Please notify the Research, Planning, and Analysis office if you have any questions about the data in this report or an error that was missed in proofing the report.

The division names adopted in 2003 are used in this report. For ease of use, they also include the old district designations in parentheses.