



**CHARLOTTE-MECKLENBURG POLICE DEPARTMENT
MONTHLY SUMMARY REPORT
OCTOBER, 2004**

**Darrel Stephens
Chief of Police**

INDEX OFFENSES REPORTED TO CHARLOTTE-MECKLENBURG POLICE DEPARTMENT

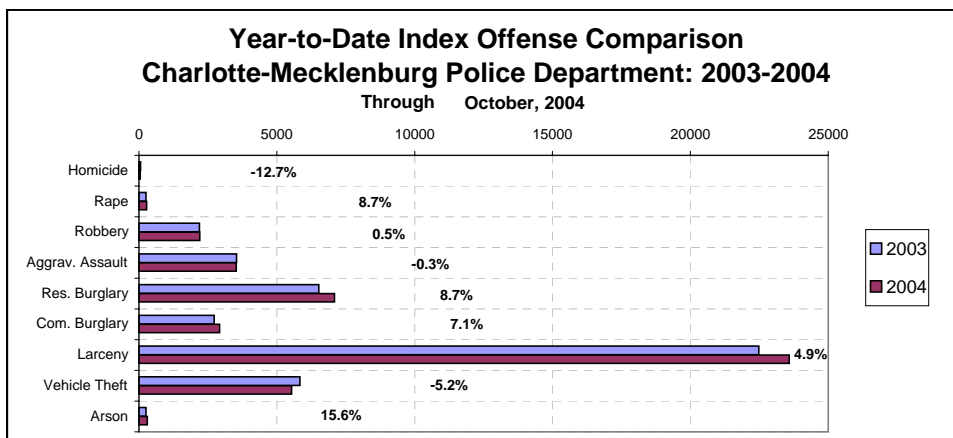
October, 2004 INDEX OFFENSES	# THIS MONTH	% OF ALL INDEX	# LAST MONTH	MONTHLY % CHANGE	SAME MONTH LAST YEAR	MONTHLY % CHANGE	THIS YEAR TO DATE	LAST YEAR TO DATE	ANNUAL % CHANGE
HOMICIDE (MURDER & NON-NEGLIGENT MANSLAUGHTER)	3	0.1%	6	-50.0%	7	-57.1%	48	55	-12.7%
RAPE TOTAL	24	0.5%	27	-11.1%	25	-4.0%	276	254	8.7%
ACTUAL	21	0.5%	24	-12.5%	20	5.0%	254	220	15.5%
ATTEMPT	3	0.1%	3	0.0%	5	-40.0%	22	34	-35.3%
ROBBERY TOTAL	248	5.5%	234	6.0%	249	-0.4%	2202	2191	0.5%
ARMED	118	2.6%	178	-33.7%	200	-41.0%	1634	1720	-5.0%
STRONG-ARM	130	2.9%	56	132.1%	49	165.3%	568	471	20.6%
AGGRAVATED ASSAULT TOTAL	274	6.1%	356	-23.0%	390	-29.7%	3530	3539	-0.3%
BURGLARY TOTAL	1086	24.1%	1095	-0.8%	974	11.5%	10011	9248	8.3%
RESIDENTIAL	790	17.6%	808	-2.2%	717	10.2%	7088	6518	8.7%
COMMERCIAL	296	6.6%	287	3.1%	257	15.2%	2923	2730	7.1%

FORCE	904	20.1%	900	0.4%	753	20.1%	8128	7288	11.5%
NO FORCE	108	2.4%	141	-23.4%	164	-34.1%	1295	1381	-6.2%
ATTEMPT	74	1.6%	54	37.0%	57	29.8%	588	569	3.3%
LARCENY TOTAL	2253	50.1%	2339	-3.7%	2484	-9.3%	23583	22480	4.9%
\$200 AND OVER	1097	24.4%	1176	-6.7%	1217	-9.9%	11512	11212	2.7%
\$50 TO \$200	419	9.3%	474	-11.6%	455	-7.9%	4342	4016	8.1%
UNDER \$50	737	16.4%	689	7.0%	812	-9.2%	7729	7252	6.6%

FROM AUTO	1159	25.8%	1209	-4.1%	1328	-12.7%	12146	11955	1.6%
BICYCLE	22	0.5%	24	-8.3%	10	120.0%	206	185	11.4%
SHOPLIFTING	197	4.4%	217	-9.2%	276	-28.6%	2393	2258	6.0%
OTHERS	875	19.4%	889	-1.6%	870	0.6%	8838	8082	9.4%
VEHICLE THEFT TOTAL	593	13.2%	613	-3.3%	541	9.6%	5537	5839	-5.2%
ARSON TOTAL	18	0.4%	29	-37.9%	28	-35.7%	296	256	15.6%
TOTALS	4499	100.0%	4699	-4.3%	4698	-4.2%	45483	43862	3.7%
VIOLENT PROPERTY	549	12.2%	623	-11.9%	671	-18.2%	6056	6039	0.3%
PROPERTY	3950	87.8%	4076	-3.1%	4027	-1.9%	39427	37823	4.2%

NOTE: Internal robbery breakdowns by armed and strong-arm in October reflect the late reclassification of some cases from previous months from armed robbery to strong-arm robbery.

NOTE: These totals include offenses reported to the Charlotte-Mecklenburg Police Department in accordance with the Uniform Crime Reporting Program. Totals for homicide do not include cases investigated by the police but classed by UCR guidelines as negligent manslaughter or as "justifiable homicide."

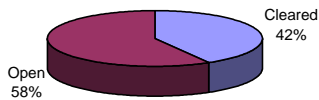


INDEX CLEARANCES REPORTED BY THE CHARLOTTE-MECKLENBURG POLICE DEPARTMENT

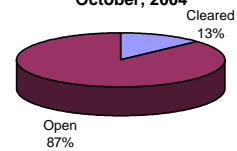
October, 2004 INDEX CLEARANCES	THIS MONTH:		LAST MONTH:		SAME MO. LAST YR:		THIS YEAR TO DATE:		LAST YEAR TO DATE:	
	NO.	%	NO.	%	NO.	%	NO.	%	NO.	%
MURDER & NON-NEGLIGENT MANSLAUGHTER	6	200.0%	11	183.3%	1	14.3%	32	66.7%	29	52.7%
RAPE TOTAL	16	66.7%	6	22.2%	4	16.0%	158	57.2%	171	67.3%
ACTUAL	13	61.9%	4	16.7%	3	15.0%	143	56.3%	150	68.2%
ATTEMPT	3	100.0%	2	66.7%	1	20.0%	15	68.2%	21	61.8%
ROBBERY TOTAL	62	25.0%	31	13.2%	20	8.0%	538	24.4%	450	20.5%
ARMED	32	27.1%	18	10.1%	12	6.0%	385	23.6%	306	17.8%
STRONG-ARM	30	23.1%	13	23.2%	8	16.3%	153	26.9%	144	30.6%
AGGRAVATED ASSAULT TOTAL	166	60.6%	144	40.4%	140	35.9%	1794	50.8%	1931	54.6%
BURGLARY TOTAL	103	9.5%	129	11.8%	40	4.1%	1029	10.3%	1107	12.0%
RESIDENTIAL	87	11.0%	107	13.2%	33	4.6%	845	11.9%	745	11.4%
COMMERCIAL	16	5.4%	22	7.7%	7	2.7%	184	6.3%	362	13.3%
LARCENY TOTAL	325	14.4%	361	15.4%	197	7.9%	3110	13.2%	2915	13.0%
FROM AUTO	32	2.8%	45	3.7%	23	1.7%	347	2.9%	391	3.3%
BICYCLE	1	4.5%	3	12.5%	1	10.0%	14	6.8%	18	9.7%
SHOPLIFTING	137	69.5%	167	77.0%	131	47.5%	1495	62.5%	1283	56.8%
OTHERS	155	17.7%	146	16.4%	42	4.8%	1254	14.2%	1223	15.1%
VEHICLE THEFT TOTAL	105	17.7%	103	16.8%	115	21.3%	968	17.5%	1168	20.0%
ARSON TOTAL	3	16.7%	11	37.9%	2	7.1%	78	26.4%	64	25.0%
TOTALS	786	17.5%	796	16.9%	519	11.0%	7707	16.9%	7835	17.9%
VIOLENT PROPERTY	250	45.5%	192	30.8%	165	24.6%	2522	41.6%	2581	42.7%
	536	13.6%	604	14.8%	354	8.8%	5185	13.2%	5254	13.9%

NOTE: Clearances are reported in accordance with Uniform Crime Report guidelines. Since clearances are not counted until they are entered into the Records system, any delays in processing may result in some clearances being reported in succeeding months.

**Year-to-Date Violent Index Clearance Rate
Charlotte-Mecklenburg Police Department: 2004
October, 2004**

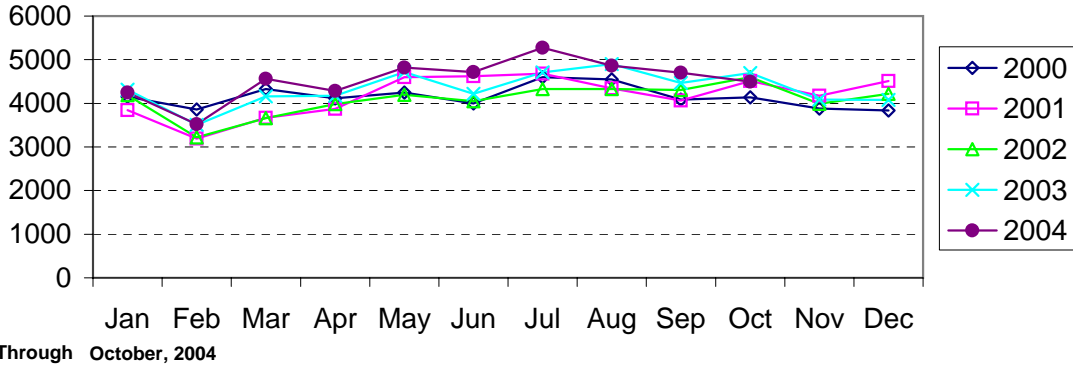


**Year-to-Date Property Index Clearance Rate
Charlotte-Mecklenburg Police Department: 2004
October, 2004**

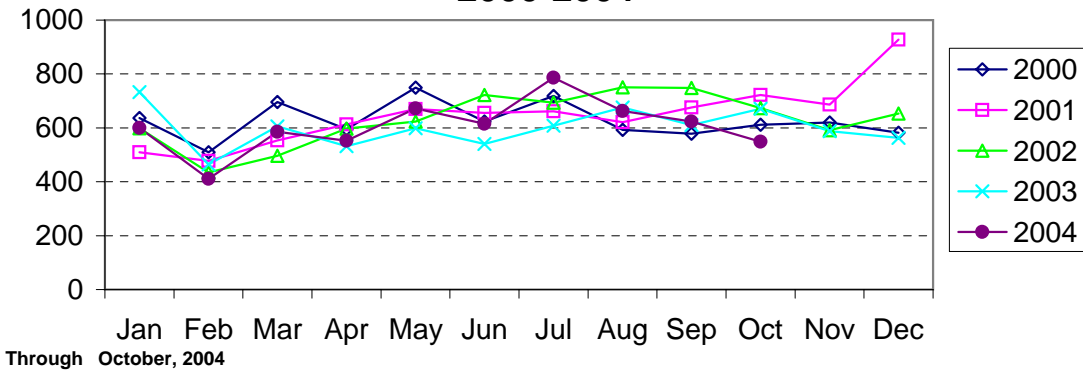


Clearance rates for crime reporting are calculated by dividing the number of crimes cleared during a designated time span by the number of crimes reported in the same period and converting the result to a percentage (multiplying by 100). Since cases from previous reporting periods can be cleared during the designated time span, the rate may be higher than 100%.

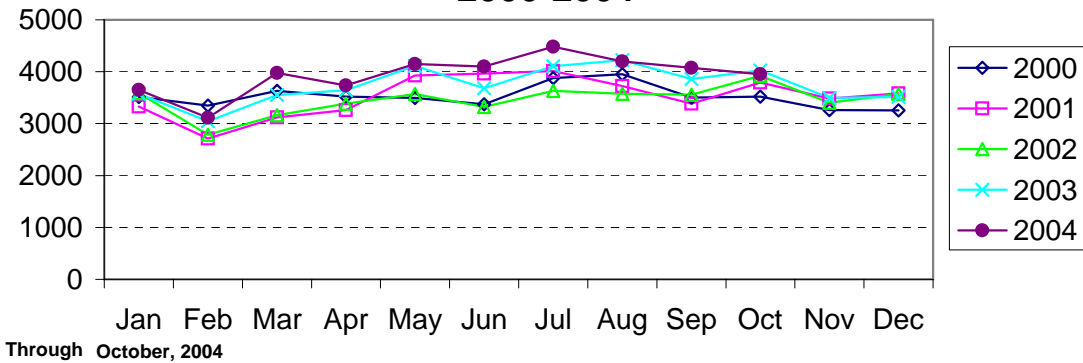
Index Offenses Reported by Month Charlotte-Mecklenburg Police Department: 2000-2004



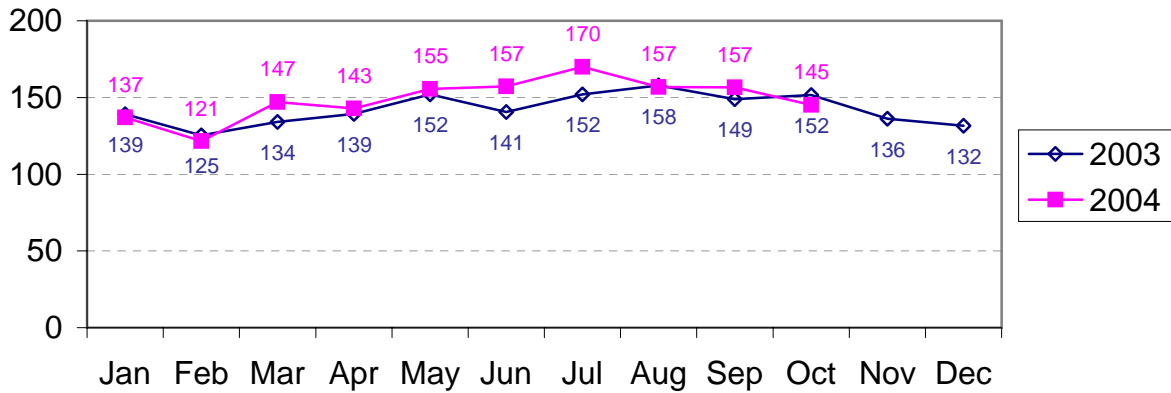
Violent Index Offenses Reported by Month Charlotte-Mecklenburg Police Department: 2000-2004



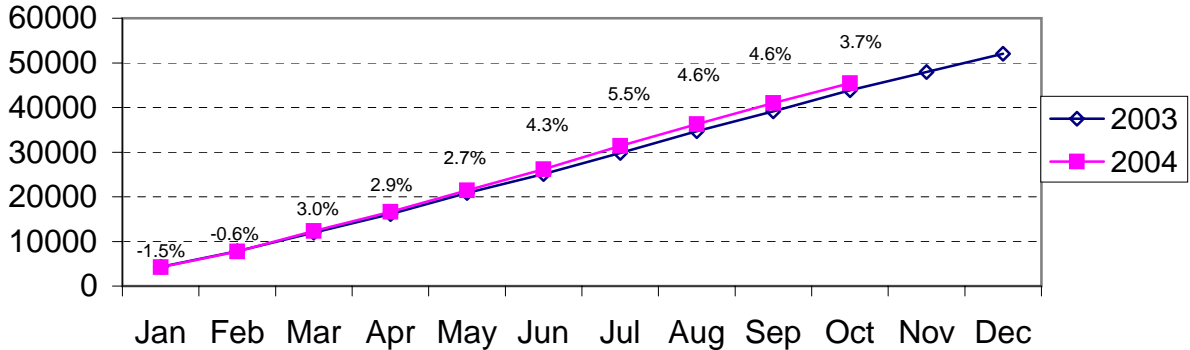
Property Index Offenses Reported by Month Charlotte-Mecklenburg Police Department: 2000-2004



Index Offense Per Day Average by Month Charlotte-Mecklenburg Police Department: 2003-2004

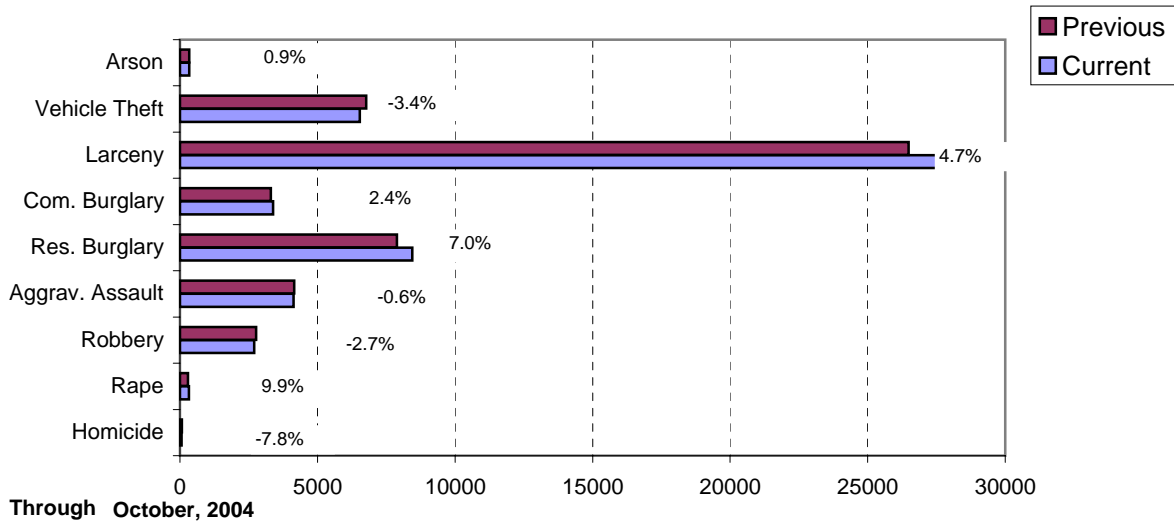


Index Offenses Year-to-Date Cumulative Totals Charlotte-Mecklenburg Police Department: 2002-2003

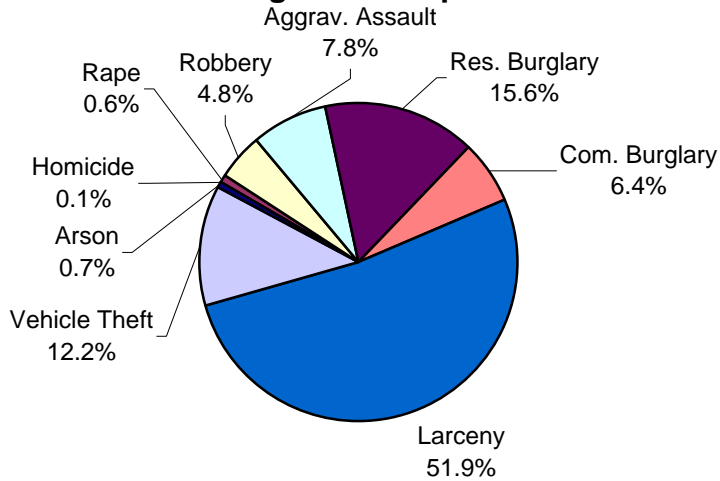


Through October, 2004

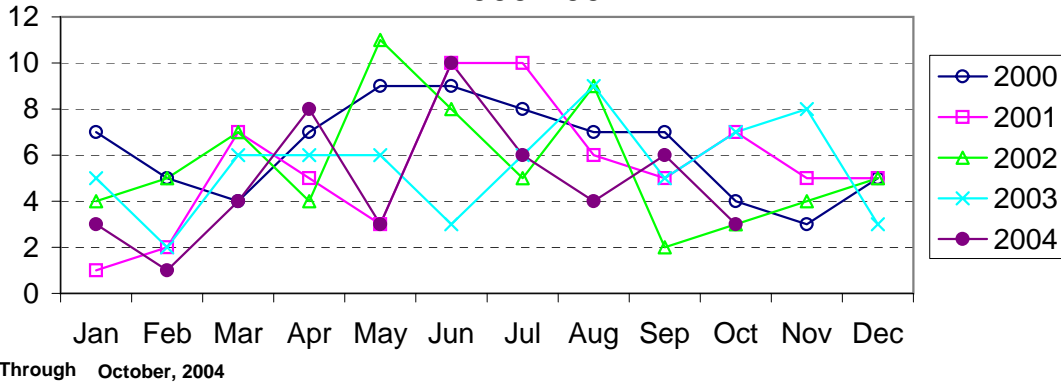
Index Offenses in Current and Previous 12 Months Charlotte-Mecklenburg Police Department: 2003-2004



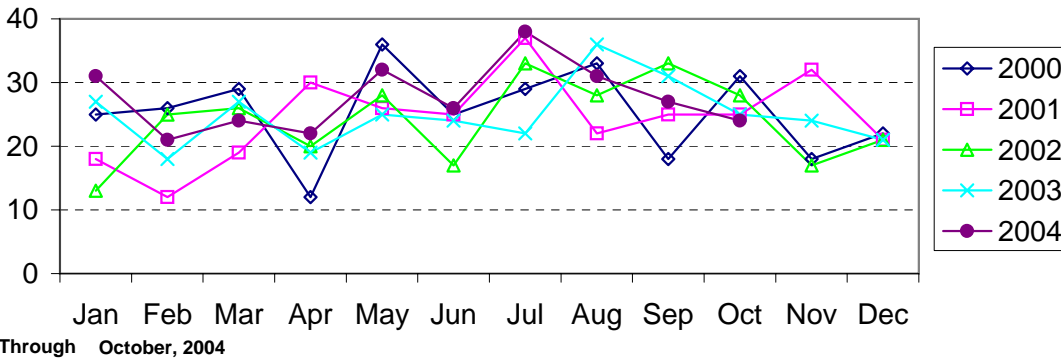
Year-to-Date Index Offenses by Type Charlotte-Mecklenburg Police Department: 2004



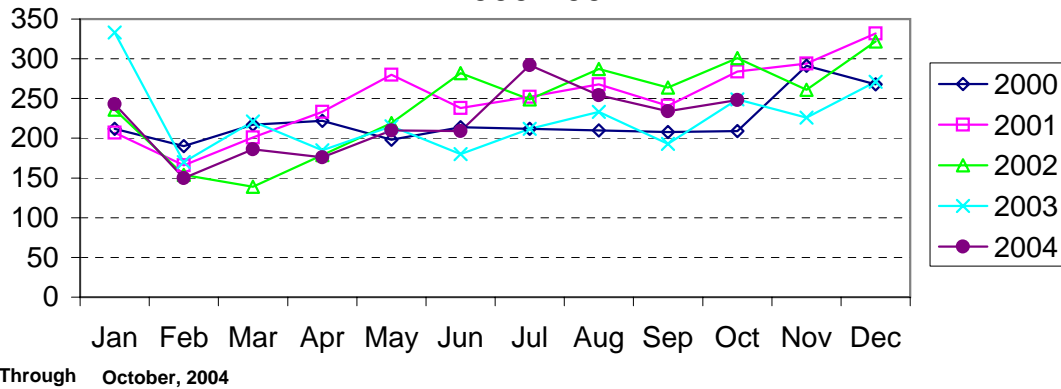
Homicide Reported by Month Charlotte-Mecklenburg Police Department: 2000-2004



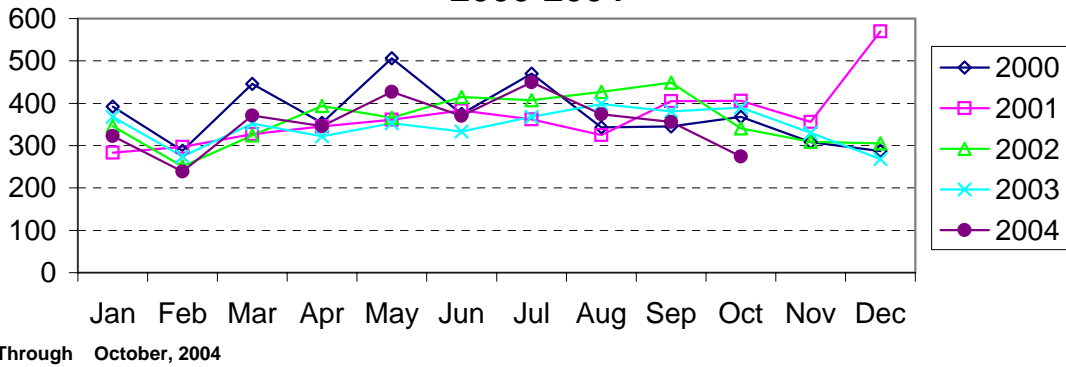
Rape Reported by Month Charlotte-Mecklenburg Police Department: 2000-2004



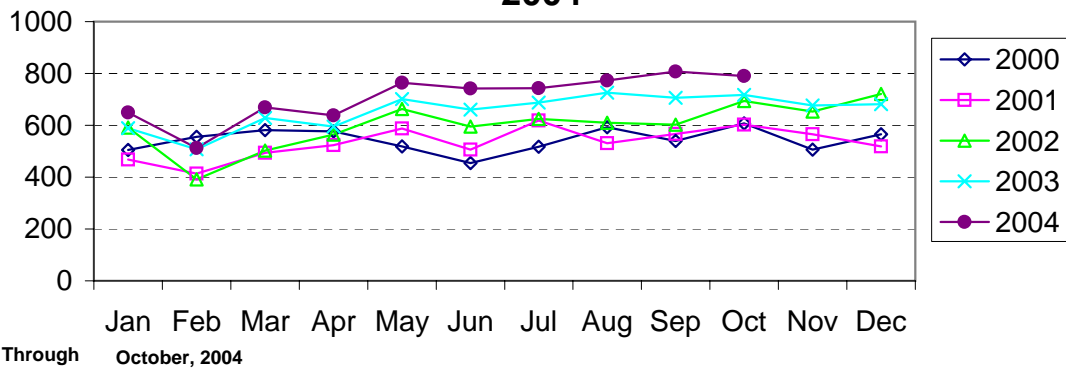
Robbery Reported by Month Charlotte-Mecklenburg Police Department: 2000-2004



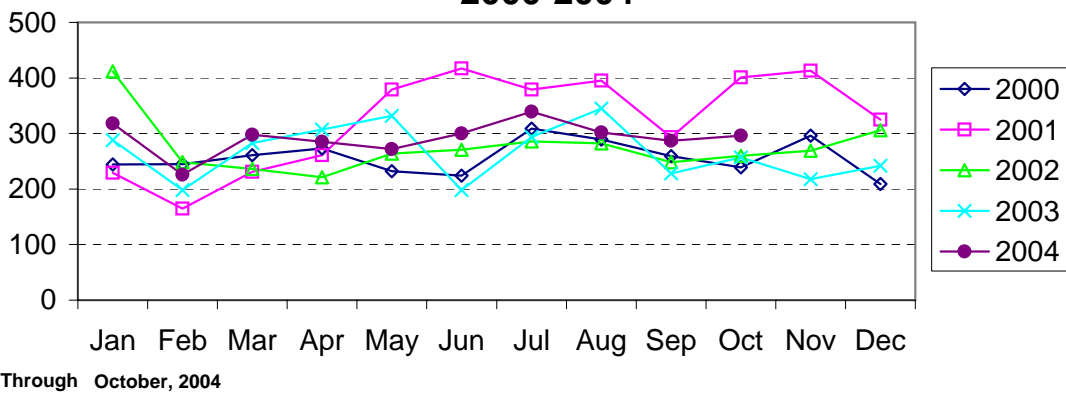
Aggravated Assault Reported by Month Charlotte-Mecklenburg Police Department: 2000-2004



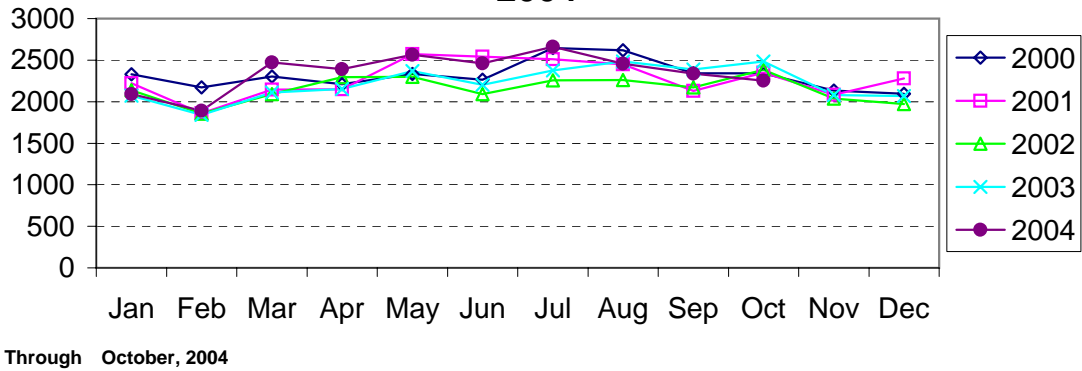
Residential Burglary Reported by Month Charlotte-Mecklenburg Police Department: 2000- 2004



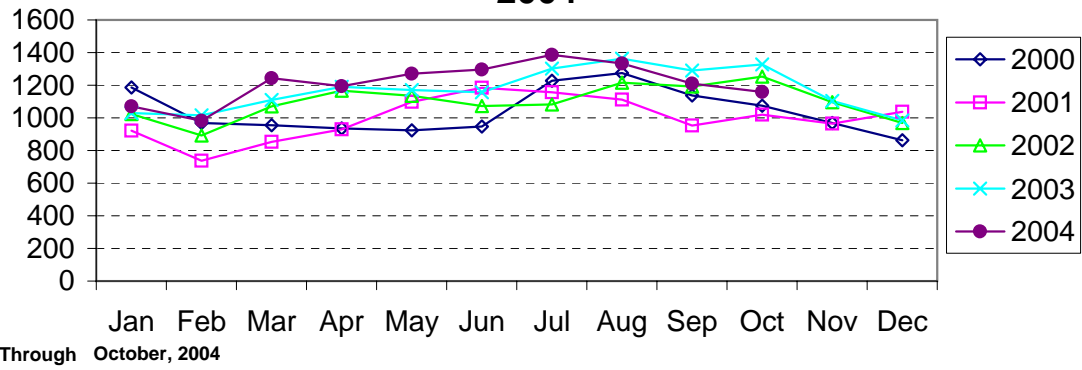
Commercial Burglary Reported by Month Charlotte-Mecklenburg Police Department: 2000-2004



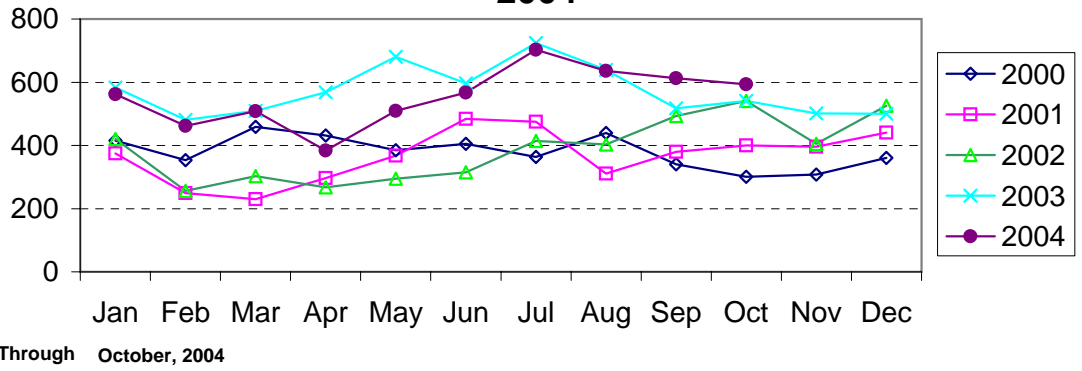
Larceny Reported by Month Charlotte-Mecklenburg Police Department: 2000-2004



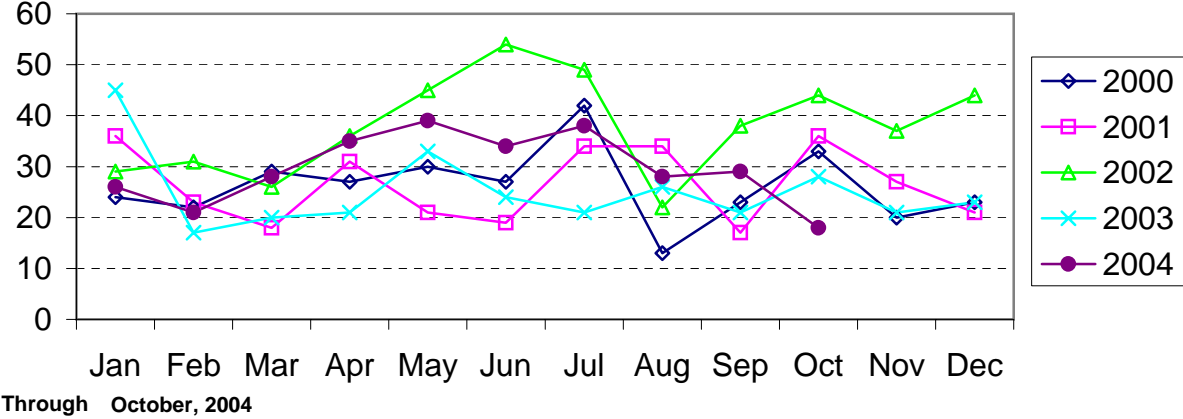
Larceny from Vehicle Reported by Month Charlotte-Mecklenburg Police Department: 2000-2004



Vehicle Theft Reported by Month Charlotte-Mecklenburg Police Department: 2000-2004



Arson Reported by Month Charlotte-Mecklenburg Police Department: 2000-2004



Index Offenses Reported by Division and Service Area of Occurrence									
West Service Area: Jan-Oct, 2003-2004									
INDEX_CATEGORIES	Westover (A2)			Freedom (A3)			West Service Area		
	2003	2004	% Change	2003	2004	% Change	2003	2004	% Change
MURDER & NON-NEGLIGENT MANSLAUGHTER	6	1	-83.3%	9	5	-44.4%	15	6	-60.0%
RAPE	19	23	21.1%	34	29	-14.7%	53	52	-1.9%
ACTUAL	18	23	27.8%	28	29	3.6%	46	52	13.0%
ATTEMPTED	1	0	-100.0%	6	0	-100.0%	7	0	-100.0%
ROBBERY	186	171	-8.1%	211	239	13.3%	397	410	3.3%
ARMED	144	131	-9.0%	166	177	6.6%	310	308	-0.6%
STRONG-ARM	42	40	-4.8%	45	62	37.8%	87	102	17.2%
AGGRAVATED ASSAULT	344	294	-14.5%	450	398	-11.6%	794	692	-12.8%
BURGLARY	714	753	5.5%	1171	1376	17.5%	1885	2129	12.9%
RESIDENTIAL	491	507	3.3%	796	960	20.6%	1287	1467	14.0%
COMMERCIAL	223	246	10.3%	375	416	10.9%	598	662	10.7%
LARCENY	1202	1478	23.0%	1987	2194	10.4%	3189	3672	15.1%
FROM AUTO	618	766	23.9%	975	1037	6.4%	1593	1803	13.2%
BICYCLE	7	11	57.1%	13	12	-7.7%	20	23	15.0%
SHOPLIFTING	113	112	-0.9%	164	221	34.8%	277	333	20.2%
OTHERS	464	589	26.9%	835	924	10.7%	1299	1513	16.5%
VEHICLE THEFT	398	385	-3.3%	676	566	-16.3%	1074	951	-11.5%
ARSON	18	25	38.9%	31	32	3.2%	49	57	16.3%
TOTALS	2887	3130	8.4%	4569	4839	5.9%	7456	7969	6.9%
VIOLENT	555	489	-11.9%	704	671	-4.7%	1259	1160	-7.9%
PROPERTY	2332	2641	13.3%	3865	4168	7.8%	6197	6809	9.9%

Index Offenses Reported by Division and Service Area of Occurrence									
Southeast Service Area: Jan-Oct, 2003-2004									
INDEX_CATEGORIES	Providence (B1)			Independence (B3)			Southeast Service Area		
	2003	2004	% Change	2003	2004	% Change	2003	2004	% Change
MURDER & NON-NEGLIGENT MANSLAUGHTER	0	3	NA	3	2	-33.3%	3	5	66.7%
RAPE	16	11	-31.3%	27	23	-14.8%	43	34	-20.9%
ACTUAL	15	10	-33.3%	24	22	-8.3%	39	32	-17.9%
ATTEMPTED	1	1	0.0%	3	1	-66.7%	4	2	-50.0%
ROBBERY	98	106	8.2%	175	183	4.6%	273	289	5.9%
ARMED	76	74	-2.6%	150	134	-10.7%	226	208	-8.0%
STRONG-ARM	22	32	45.5%	26	49	88.5%	48	81	68.8%
AGGRAVATED ASSAULT	171	144	-15.8%	262	288	9.9%	433	432	-0.2%
BURGLARY	704	698	-0.9%	852	927	8.8%	1556	1625	4.4%
RESIDENTIAL	444	428	-3.6%	642	731	13.9%	1086	1159	6.7%
COMMERCIAL	260	270	3.8%	210	196	-6.7%	470	466	-0.9%
LARCENY	1493	1662	11.3%	2393	1880	-21.4%	3886	3542	-8.9%
FROM AUTO	694	766	10.4%	1430	1040	-27.3%	2124	1806	-15.0%
BICYCLE	14	18	28.6%	36	17	-52.8%	50	35	-30.0%
SHOPLIFTING	163	166	1.8%	199	154	-22.6%	362	320	-11.6%
OTHERS	622	712	14.5%	728	669	-8.1%	1350	1381	2.3%
VEHICLE THEFT	274	322	17.5%	588	549	-6.6%	862	871	1.0%
ARSON	12	13	8.3%	30	27	-10.0%	42	40	-4.8%
TOTALS	2768	2959	6.9%	4330	3879	-10.4%	7098	6838	-3.7%
VIOLENT	285	264	-7.4%	467	496	6.2%	752	760	1.1%
PROPERTY	2483	2695	8.5%	3863	3383	-12.4%	6346	6078	-4.2%

The data in the district breakdowns does not include a small number of offenses in which the location of the offense was unknown or was entered without a valid tract assignment. Districts are not equal in geographic size, demographics, zoning/development, and other factors that influence the rate of crimes committed in an area. Therefore, the comparison of raw offense totals across districts is not advisable.

Index Offenses Reported by Division and Service Area of Occurrence									
Northeast Service Area: Jan-Oct, 2003-2004									
INDEX_CATEGORIES	North (C1)			Hickory Grove (C3)			Northeast Service Area		
	2003	2004	% Change	2003	2004	% Change	2003	2004	% Change
MURDER & NON-NEGLIGENT MANSLAUGHTER	4	6	50.0%	6	2	-66.7%	10	8	-20.0%
RAPE	26	39	50.0%	22	31	40.9%	48	70	45.8%
ACTUAL	23	37	60.9%	17	26	52.9%	40	63	57.5%
ATTEMPTED	3	2	-33.3%	5	5	0.0%	8	7	-12.5%
ROBBERY	165	210	27.3%	216	197	-8.8%	381	407	6.8%
ARMED	131	164	25.2%	170	161	-5.3%	301	325	8.0%
STRONG-ARM	34	46	35.3%	46	36	-21.7%	80	82	2.5%
AGGRAVATED ASSAULT	290	305	5.2%	352	380	8.0%	642	685	6.7%
BURGLARY	1056	1354	28.2%	938	989	5.4%	1994	2343	17.5%
RESIDENTIAL	752	956	27.1%	708	794	12.1%	1460	1750	19.9%
COMMERCIAL	304	398	30.9%	230	191	-17.0%	534	589	10.3%
LARCENY	3345	3518	5.2%	1942	1798	-7.4%	5287	5316	0.5%
FROM AUTO	1952	1998	2.4%	1041	907	-12.9%	2993	2905	-2.9%
BICYCLE	10	19	90.0%	25	36	44.0%	35	55	57.1%
SHOPLIFTING	291	301	3.4%	194	129	-33.5%	485	430	-11.3%
OTHERS	1092	1200	9.9%	682	726	6.5%	1774	1926	8.6%
VEHICLE THEFT	676	711	5.2%	702	586	-16.5%	1378	1297	-5.9%
ARSON	31	39	25.8%	30	39	30.0%	61	78	27.9%
TOTALS	5593	6182	10.5%	4208	4022	-4.4%	9801	10204	4.1%
VIOLENT	485	560	15.5%	596	610	2.3%	1081	1170	8.2%
PROPERTY	5108	5622	10.1%	3612	3412	-5.5%	8720	9034	3.6%

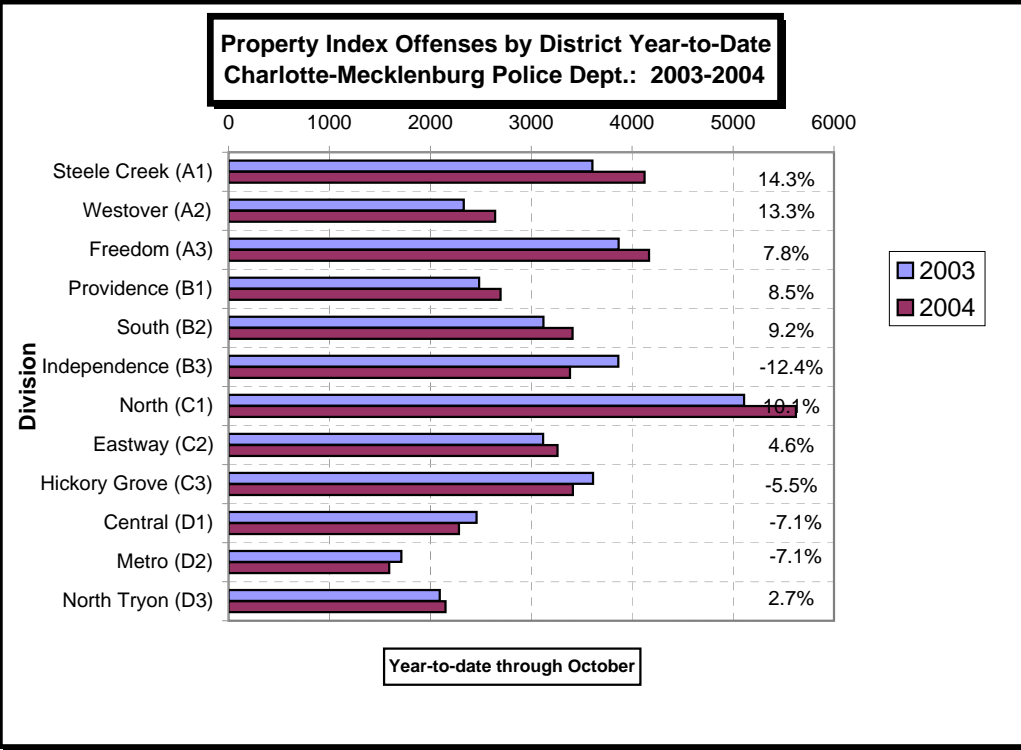
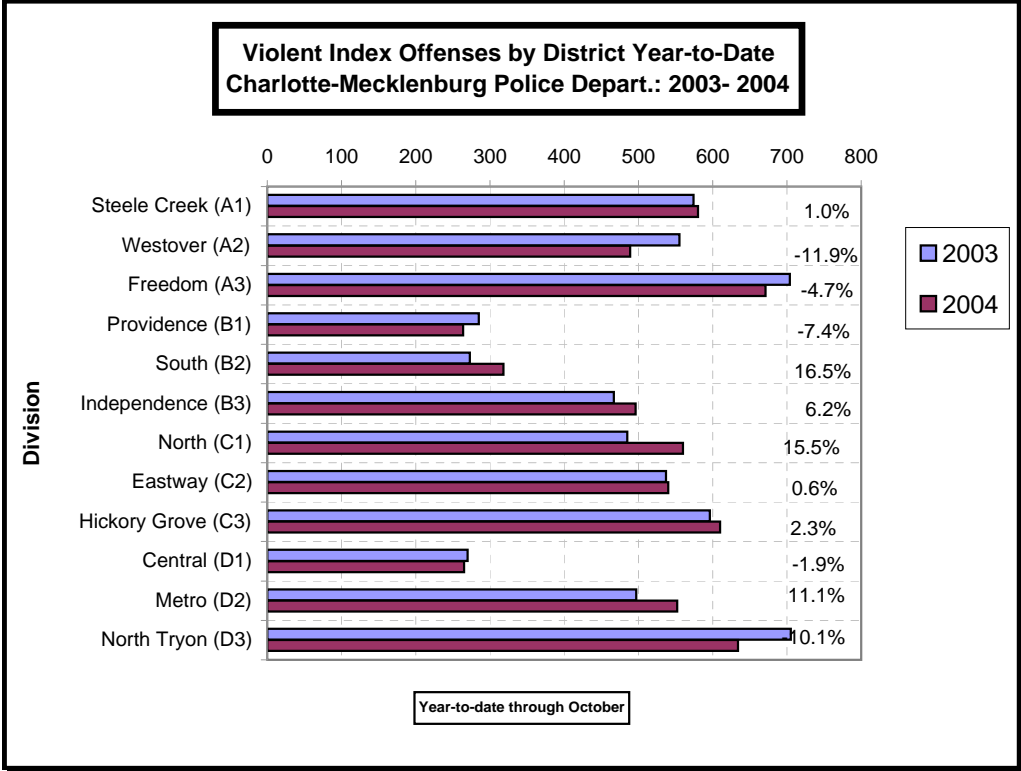
Index Offenses Reported by Division and Service Area of Occurrence									
Central Service Area: Jan-Oct, 2003-2004									
INDEX_CATEGORIES	Central (D1)			Metro (D2)			Central Service Area		
	2003	2004	% Change	2003	2004	% Change	2003	2004	% Change
MURDER & NON-NEGLIGENT MANSLAUGHTER	2	1	-50.0%	5	7	40.0%	7	8	14.3%
RAPE	13	17	30.8%	18	21	16.7%	31	38	22.6%
ACTUAL	12	16	33.3%	14	20	42.9%	26	36	38.5%
ATTEMPTED	1	1	0.0%	4	1	-75.0%	5	2	-60.0%
ROBBERY	103	106	2.9%	147	178	21.1%	250	284	13.6%
ARMED	63	60	-4.8%	115	139	20.9%	178	199	11.8%
STRONG-ARM	40	46	15.0%	32	39	21.9%	72	85	18.1%
AGGRAVATED ASSAULT	152	141	-7.2%	327	346	5.8%	479	487	1.7%
BURGLARY	336	317	-5.7%	460	521	13.3%	796	838	5.3%
RESIDENTIAL	182	133	-26.9%	345	387	12.2%	527	520	-1.3%
COMMERCIAL	154	184	19.5%	115	134	16.5%	269	318	18.2%
LARCENY	1714	1695	-1.1%	895	798	-10.8%	2609	2493	-4.4%
FROM AUTO	1006	919	-8.6%	513	357	-30.4%	1519	1276	-16.0%
BICYCLE	8	16	100.0%	14	7	-50.0%	22	23	4.5%
SHOPLIFTING	55	56	1.8%	34	56	64.7%	89	112	25.8%
OTHERS	645	705	9.3%	334	379	13.5%	979	1084	10.7%
VEHICLE THEFT	395	267	-32.4%	345	262	-24.1%	740	529	-28.5%
ARSON	13	4	-69.2%	14	11	-21.4%	27	15	-44.4%
TOTALS	2728	2548	-6.6%	2211	2144	-3.0%	4939	4692	-5.0%
VIOLENT	270	265	-1.9%	497	552	11.1%	767	817	6.5%
PROPERTY	2458	2283	-7.1%	1714	1592	-7.1%	4172	3875	-7.1%

The data in the district breakdowns does not include a small number of offenses in which the location of the offense was unknown or was entered without a valid tract assignment. Districts are not equal in geographic size, demographics, zoning/development, and other factors that influence the rate of crimes committed in an area. Therefore, the comparison of raw offense totals across districts is not advisable.

Index Offenses Reported by Division and Service Area of Occurrence									
East Service Area: Jan-Oct, 2003-2004									
INDEX_CATEGORIES	Eastway (C2)			North Tryon (D3)			East Service Area		
	2003	2004	% Change	2003	2004	% Change	2003	2004	% Change
MURDER & NON-NEGLIGENT MANSLAUGHTER	3	5	66.7%	7	8	14.3%	10	13	30.0%
RAPE	16	18	12.5%	16	15	-6.3%	32	33	3.1%
ACTUAL	15	14	-6.7%	16	14	-12.5%	31	28	-9.7%
ATTEMPTED	1	4	300.0%	0	1	NA	1	5	400.0%
ROBBERY	266	243	-8.6%	274	239	-12.8%	540	482	-10.7%
ARMED	204	174	-14.7%	225	172	-23.6%	429	346	-19.3%
STRONG-ARM	62	69	11.3%	49	67	36.7%	111	136	22.5%
AGGRAVATED ASSAULT	252	274	8.7%	408	372	-8.8%	660	646	-2.1%
BURGLARY	774	846	9.3%	631	612	-3.0%	1405	1458	3.8%
RESIDENTIAL	572	625	9.3%	412	403	-2.2%	984	1028	4.5%
COMMERCIAL	202	221	9.4%	219	209	-4.6%	421	430	2.1%
LARCENY	1890	1924	1.8%	996	1127	13.2%	2886	3051	5.7%
FROM AUTO	834	692	-17.0%	522	546	4.6%	1356	1238	-8.7%
BICYCLE	14	25	78.6%	11	8	-27.3%	25	33	32.0%
SHOPLIFTING	464	630	35.8%	66	88	33.3%	530	718	35.5%
OTHERS	578	577	-0.2%	397	485	22.2%	975	1062	8.9%
VEHICLE THEFT	438	463	5.7%	457	400	-12.5%	895	863	-3.6%
ARSON	14	26	85.7%	10	11	10.0%	24	37	54.2%
TOTALS	3653	3799	4.0%	2799	2784	-0.5%	6452	6583	2.0%
VIOLENT	537	540	0.6%	705	634	-10.1%	1242	1174	-5.5%
PROPERTY	3116	3259	4.6%	2094	2150	2.7%	5210	5409	3.8%

Index Offenses Reported by Division and Service Area of Occurrence									
South Service Area: Jan-Oct, 2003-2004									
INDEX_CATEGORIES	Steele Creek (A1)			South (B2)			South Service Area		
	2003	2004	% Change	2003	2004	% Change	2003	2004	% Change
MURDER & NON-NEGLIGENT MANSLAUGHTER	6	8	33.3%	4	1	-75.0%	10	9	-10.0%
RAPE	23	22	-4.3%	21	16	-23.8%	44	38	-13.6%
ACTUAL	18	19	5.6%	18	13	-27.8%	36	32	-11.1%
ATTEMPTED	5	3	-40.0%	3	3	0.0%	8	6	-25.0%
ROBBERY	226	191	-15.5%	101	113	11.9%	327	304	-7.0%
ARMED	174	146	-16.1%	75	82	9.3%	249	228	-8.4%
STRONG-ARM	42	45	7.1%	26	31	19.2%	68	76	11.8%
AGGRAVATED ASSAULT	319	359	12.5%	147	188	27.9%	466	547	17.4%
BURGLARY	738	810	9.8%	769	734	-4.6%	1507	1544	2.5%
RESIDENTIAL	505	491	-2.8%	606	574	-5.3%	1111	1065	-4.1%
COMMERCIAL	233	319	36.9%	163	160	-1.8%	396	479	21.0%
LARCENY	2351	2762	17.5%	2008	2244	11.8%	4359	5006	14.8%
FROM AUTO	1119	1565	39.9%	1110	1287	15.9%	2229	2852	27.9%
BICYCLE	17	23	35.3%	15	13	-13.3%	32	36	12.5%
SHOPLIFTING	358	331	-7.5%	135	131	-3.0%	493	462	-6.3%
OTHERS	857	843	-1.6%	748	813	8.7%	1605	1656	3.2%
VEHICLE THEFT	493	514	4.3%	325	402	23.7%	818	916	12.0%
ARSON	25	37	48.0%	20	28	40.0%	45	65	44.4%
TOTALS	4181	4703	12.5%	3395	3726	9.7%	7576	8429	11.3%
VIOLENT	574	580	1.0%	273	318	16.5%	847	898	6.0%
PROPERTY	3607	4123	14.3%	3122	3408	9.2%	6729	7531	11.9%

The data in the district breakdowns does not include a small number of offenses in which the location of the offense was unknown or was entered without a valid tract assignment. Districts are not equal in geographic size, demographics, zoning/development, and other factors that influence the rate of crimes committed in an area. Therefore, the comparison of raw offense totals across districts is not advisable.



The data in the district breakdowns does not include a small number of offenses in which the location of the offense was unknown or was entered without a valid tract assignment. Districts are not equal in geographic size, demographics, zoning/development, and other factors that influence the rate of crimes committed in an area. Therefore, the comparison of raw offense totals across districts is not advisable.

Arrests by Charlotte-Mecklenburg Police Department
Year-To-Date: 2003-2004
(Through October)

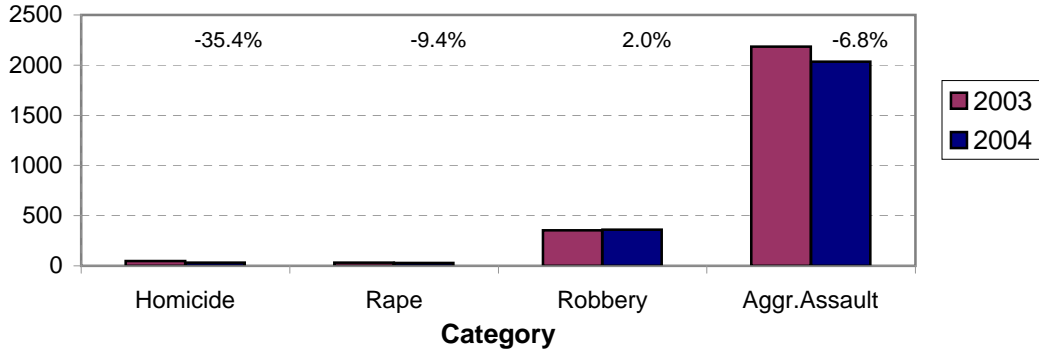
CATEGORY	ADULTS (AGE 18 & OLDER):			JUVENILES (UNDER 18):			TOTAL ARRESTS:		
	2003 Y-T-D	2004 Y-T-D	% CHANGE	2003 Y-T-D	2004 Y-T-D	% CHANGE	2003 Y-T-D	2004 Y-T-D	% CHANGE
Murder/Non-Negligent Manslaughter	42	31	-26.2%	6	0	-100.0%	48	31	-35.4%
Negligent & Vehicular Manslaughter	1	4	300.0%	0	0	NA	1	4	300.0%
Rape	26	27	3.8%	6	2	-66.7%	32	29	-9.4%
Robbery	253	248	-2.0%	101	113	11.9%	354	361	2.0%
Aggravated Assault	1876	1763	-6.0%	307	272	-11.4%	2183	2035	-6.8%
Burglary	415	493	18.8%	197	187	-5.1%	612	680	11.1%
Larceny	1246	1334	7.1%	544	499	-8.3%	1790	1833	2.4%
Vehicle Theft	130	66	-49.2%	316	132	-58.2%	446	198	-55.6%
Non-Aggravated Assault	1439	1555	8.1%	738	683	-7.5%	2177	2238	2.8%
Arson	17	14	-17.6%	20	26	30.0%	37	40	8.1%
Forgery/Counterfiet	105	119	13.3%	4	2	-50.0%	109	121	11.0%
Fraud	463	458	-1.1%	8	7	-12.5%	471	465	-1.3%
Embezzlement	86	80	-7.0%	4	13	225.0%	90	93	3.3%
Stolen Property	446	437	-2.0%	127	84	-33.9%	573	521	-9.1%
Vandalism	210	185	-11.9%	173	172	-0.6%	383	357	-6.8%
Weapons	404	373	-7.7%	58	51	-12.1%	462	424	-8.2%
Prostitution	306	332	8.5%	3	8	166.7%	309	340	10.0%
Sex Offenses	204	177	-13.2%	40	18	-55.0%	244	195	-20.1%
Drugs	2654	2271	-14.4%	256	211	-17.6%	2910	2482	-14.7%
Gambling	22	12	-45.5%	0	0	NA	22	12	-45.5%
Offenses vs. Family	9	5	-44.4%	0	1	NA	9	6	-33.3%
DUI	1715	1635	-4.7%	9	10	11.1%	1724	1645	-4.6%
Liquor	154	183	18.8%	13	9	-30.8%	167	192	15.0%
Disorder.Conduct	487	479	-1.6%	249	247	-0.8%	736	726	-1.4%
Other Non-Traffic	6332	6758	6.7%	667	629	-5.7%	6999	7387	5.5%
VIOLENT INDEX¹	2197	2069	-5.8%	420	387	-7.9%	2617	2456	-6.2%
PROPERTY INDEX²	1808	1907	5.5%	1077	844	-21.6%	2885	2751	-4.6%
INDEX SUBTOTAL	4005	3976	-0.7%	1497	1231	-17.8%	5502	5207	-5.4%
PART 2 SUBTOTAL³	15037	15063	0.2%	2349	2145	-8.7%	17386	17208	-1.0%
TOTAL	19042	19039	0.0%	3846	3376	-12.2%	22888	22415	-2.1%

¹Violent Index includes murder and non-negligent manslaughter, rape, robbery, and aggravated assault.

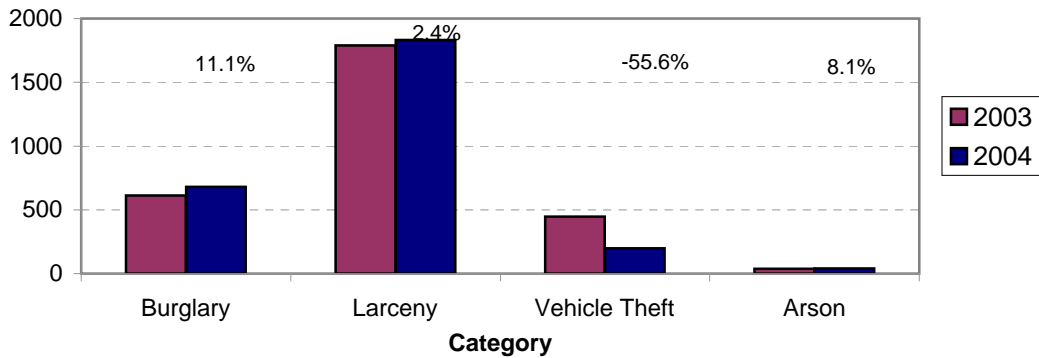
²Property Index includes burglary, larceny, vehicle theft, and arson.

³Part 2 crimes include non-traffic crimes not counted in the Index totals.

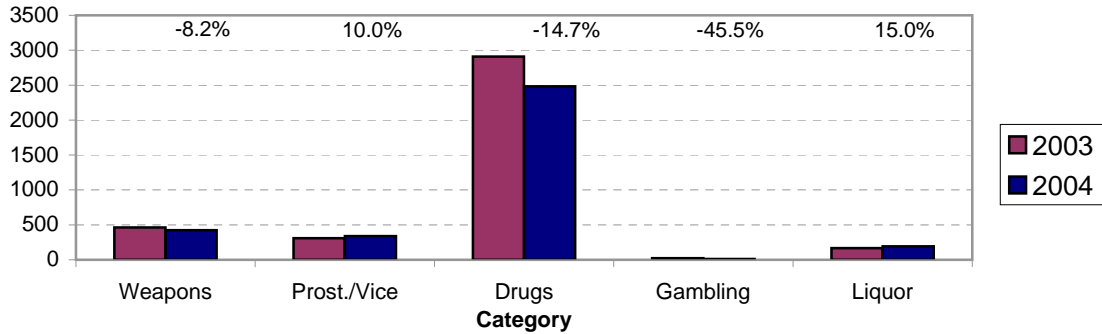
**Violent Index Arrests Year-to-Date
Charlotte-Mecklenburg Police Department: 2003-2004
(Through October)**



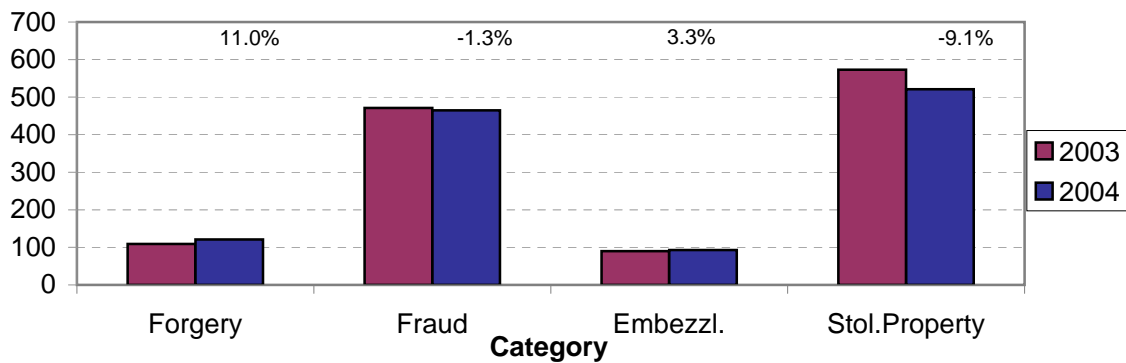
**Property Index Arrests Year-to-Date
Charlotte-Mecklenburg Police Department: 2003-2004
(Through October)**



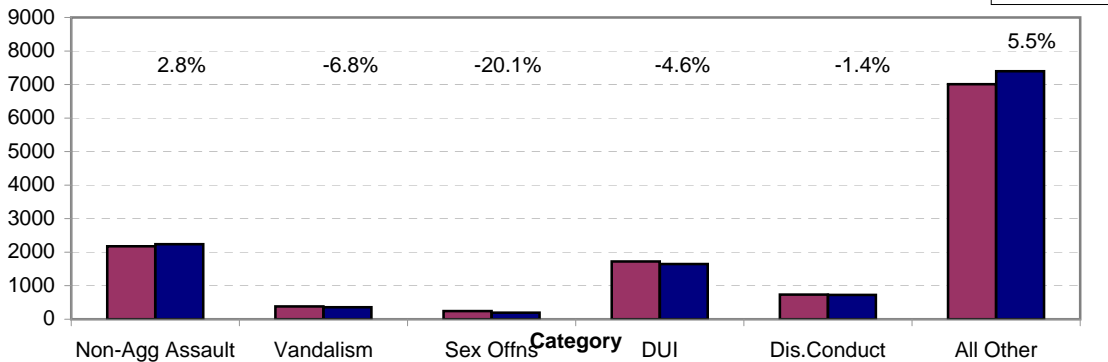
**Arrests for Vice/CCW/Drugs/Etc. Year-to-Date
Charlotte-Mecklenburg Police Department: 2003 - 2004
(Through October)**



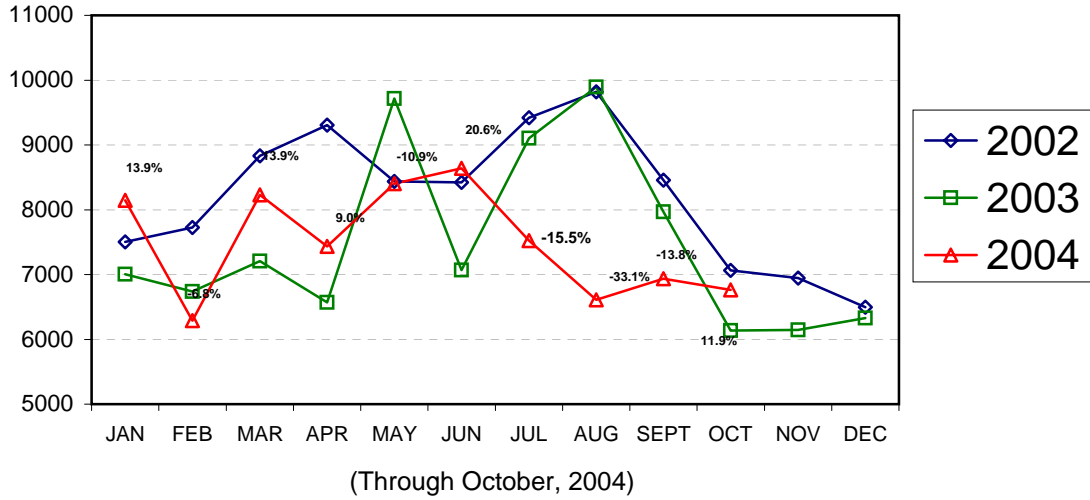
**Arrests for Property/White Collar Crime Year-to-Date
Charlotte-Mecklenburg Police Department: 2003 - 2004
(Through October)**



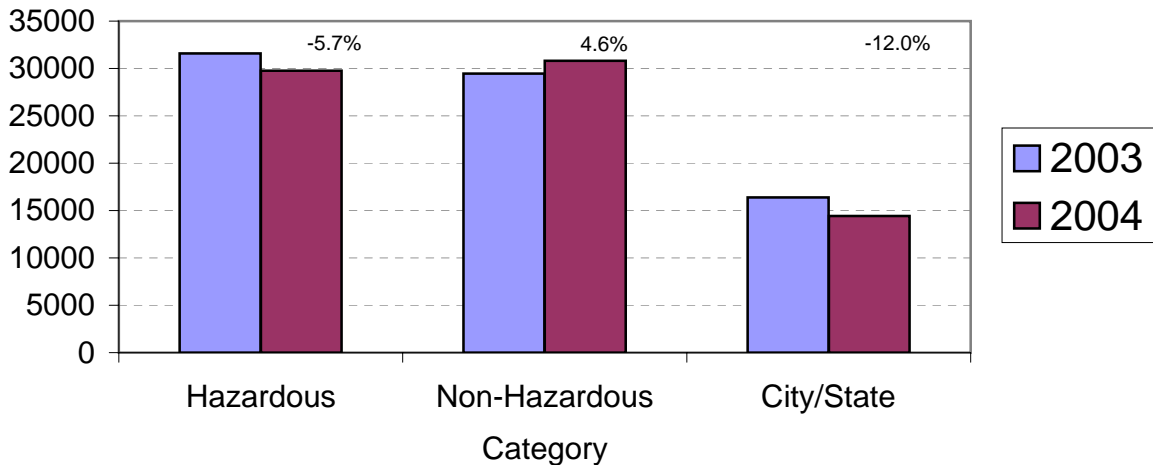
**Arrests for Other Categories Year-to-Date
Charlotte-Mecklenburg Police Department: 2003 - 2004
(Through October)**



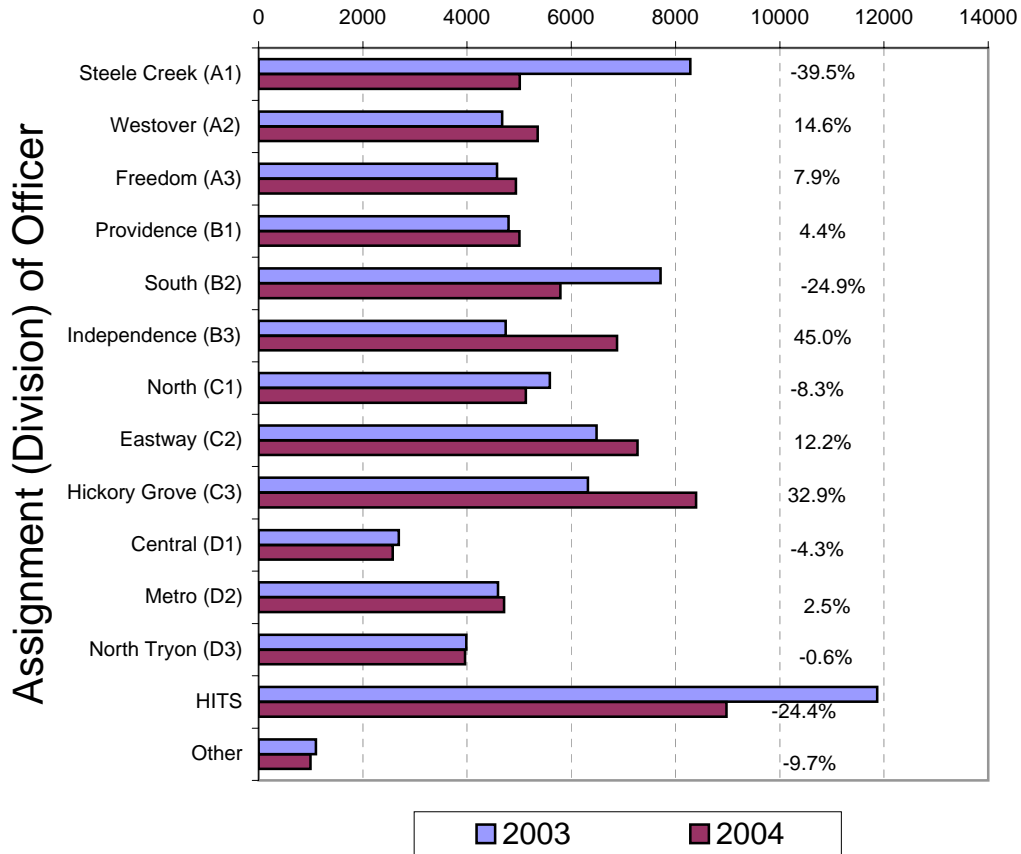
Total Citation Enforcement by Month Charlotte-Mecklenburg Police Dept.: 2002-2004



CMPD Citation Enforcement by Category Year-to-Date, 2003 - 2004 (Through October, 2004)



**Citations Issued Year-to-Date by CMPD Divisions
2003 - 2004
(Through October, 2004)**

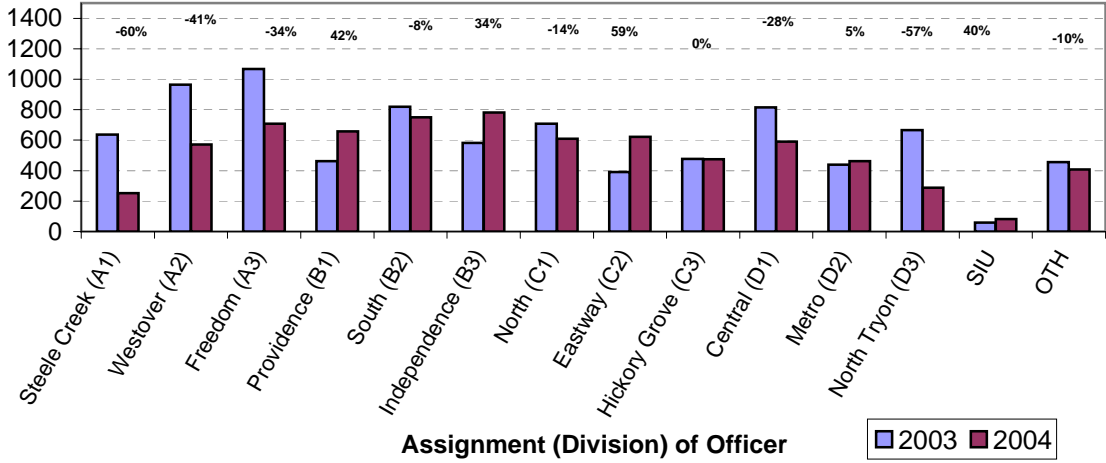


Note: 2003 and 2004 data for HITS and Other was adjusted in April, 2004.

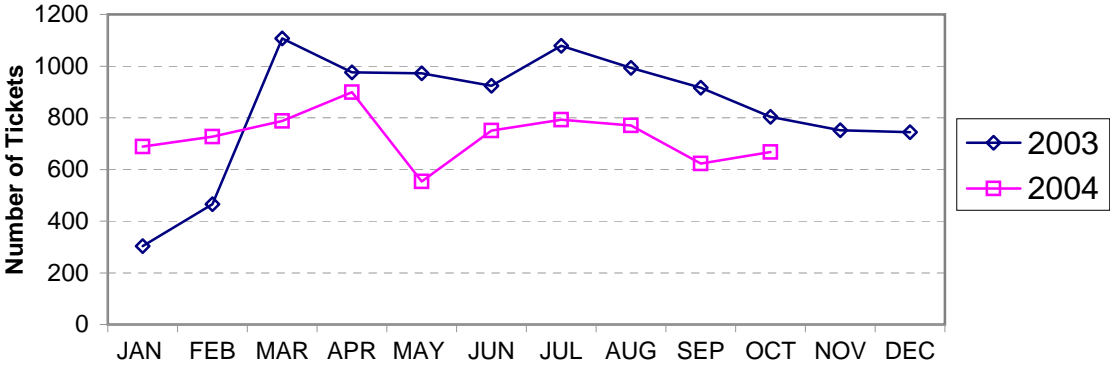
Citations Issued by the Charlotte Mecklenburg Police Officers Year-to-Date (Through October, 2004)			
Total Citations	2003	2004	% Change
Hazardous	31,574	29,764	-5.7%
Non-Hazardous	29,456	30,797	4.6%
Other City/State Statute/Ordinance	16,378	14,414	-12.0%
Total	77,408	74,975	-3.1%

"Safe Speed" Program: Initiated August, 2004 (Through October, 2004)	
Total Citations	5409
(Citations issued through the "Safe Speed" program are not included in the CMPD citation totals used in the summary chart above and in the other citation graphs.)	

**Warning Tickets Issued by CMPD Division
Year-to-Date, 2003 - 2004
Through October, 2004**



**Total Warning Tickets Issued by CMPD
By Month: 2003 - 2004**



**Warning Tickets Issued by CMPD Year-to-Date
Through October, 2004**

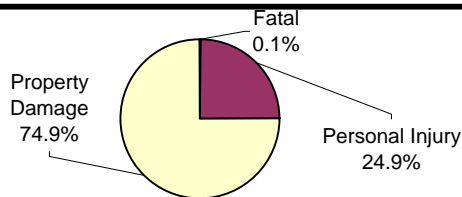
	2003	2004	% Change
Total Warning Tickets	8541	7257	-15.0%

**Traffic Collison Reports
Charlotte-Mecklenburg Police Department
Year-to-Date: 2003-2004
(Through October)**

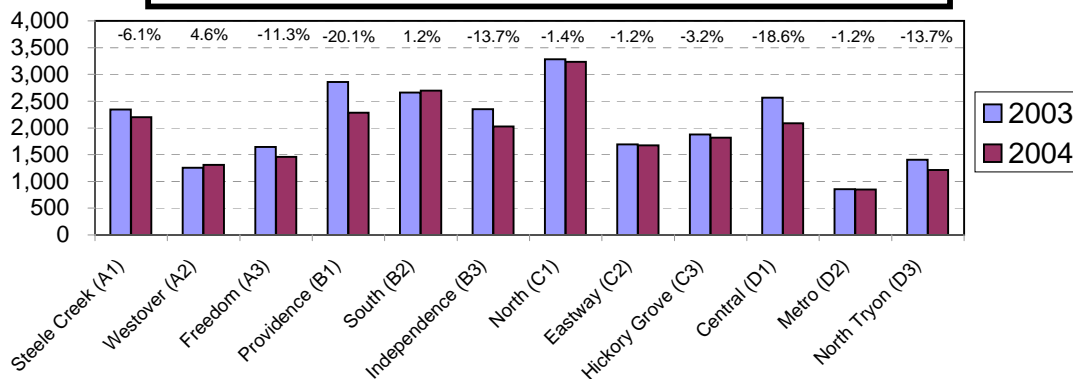
Type	2003	2004	% Change
Fatal Collisions	44	33	-25.0%
Vehicle Occupants Killed	44	31	-29.5%
Pedestrians Killed	5	4	-20.0%
Personal Injury Collisions	6228	5687	-8.8%
Property Damage Collisions	18648	17179	-7.9%
Total Collisions	24920	22899	-8.1%

* The number of fatal collisions and the number of persons killed in those incidents is taken from the HITS file. Their records are updated for deaths that occur after the initial report is filed.

**Traffic Collisions Reported by Type
Charlotte-Mecklenburg Police Department:
2004 Year-to-Date
(Through October)**



**Traffic Collisions Reported by Charlotte-Mecklenburg Police Dept.
Year-to-Date By Location (Division) : 2003 -2004
(Through October)**



Uniform Crime Reporting Procedures:

The Charlotte-Mecklenburg Police Department reports offense and arrest statistics in accordance with standard Uniform Crime Reporting (UCR) guidelines. UCR policy states that any adjustments to previous months can be made on the current month's report:

...In tabulating crime counts, an agency may find that offense totals for past months require adjustments due to developments in the investigation or other handling of the matter. It may be necessary to adjust totals reported to UCR for the past month or prior months. Needed adjustments can be made on the current month's report and do not affect the reliability of the figures in that such adjustments tend to equalize each other from month to month over a period of time.

- *Uniform Crime Reporting Handbook*, FBI, 1984, p. 42-43

We are required to report crime monthly to the UCR program, and we do therefore make an effort to process monthly changes in a timely manner. However, occasionally due to the review and processing required for reclassifying, unfounding or clearing cases, the current month's totals may reflect the processing of a backlog of these changes from previous months.

Users of the data are cautioned that conclusions about substantial changes in crime trends or in clearance rates based on only a single month's data or trend may reflect some of these adjustments. For this reason, in addition to the monthly and year-to-date trends on Page 1, the monthly report routinely includes a comparison for the previous 12 months (p. 4), as well as graphs that provide seasonal/monthly comparisons over a five-year period (p. 5-8).

This report was compiled with data entry assistance from Sandy Johnson in the Research, Planning, and Analysis Division.

We make an effort to present the most accurate information available at the time this report is published. Please notify the Research, Planning, and Analysis office if you have any questions about the data in this report or about an error that was missed in proofing the report.

The division names adopted in 2003 are used in this report. For ease of use, they also include the old district designations in parentheses.