



---

**CHARLOTTE-MECKLENBURG POLICE DEPARTMENT  
MONTHLY SUMMARY REPORT  
DECEMBER, 2004**

---

---

**Darrel Stephens  
Chief of Police**

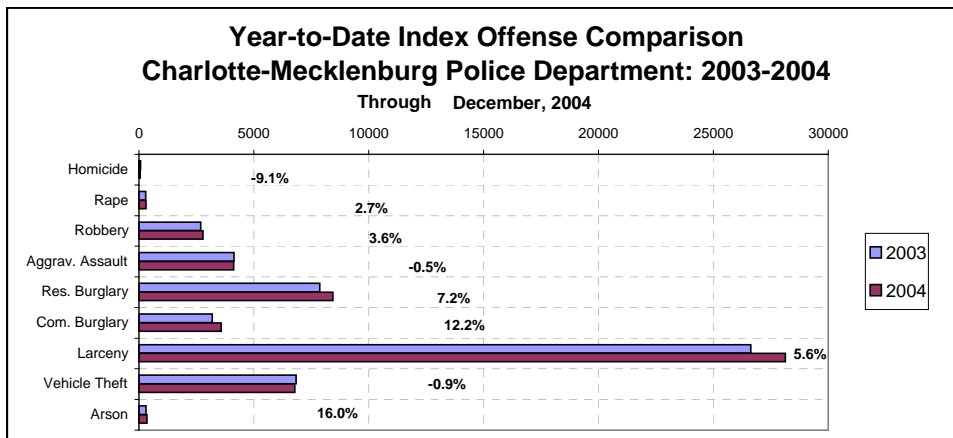
---

**INDEX OFFENSES REPORTED TO CHARLOTTE-MECKLENBURG POLICE DEPARTMENT**

December, 2004 INDEX OFFENSES	# THIS MONTH	% OF ALL INDEX	# LAST MONTH	MONTHLY % CHANGE	SAME MONTH LAST YEAR	MONTHLY % CHANGE	THIS YEAR TO DATE	LAST YEAR TO DATE	ANNUAL % CHANGE
HOMICIDE (MURDER & NON- NEGLIGENT MANSLAUGHTER)	6	0.1%	6	0.0%	3	100.0%	60	66	-9.1%
RAPE TOTAL	16	0.3%	15	6.7%	21	-23.8%	307	299	2.7%
ACTUAL	13	0.3%	10	30.0%	22	-40.9%	277	266	4.1%
ATTEMPT	3	0.1%	5	-40.0%	-1	-400.0%	30	33	-9.1%
ROBBERY TOTAL	311	6.4%	273	13.9%	271	14.8%	2786	2688	3.6%
ARMED	247	5.1%	226	9.3%	225	9.8%	2107	2121	-0.7%
STRONG-ARM	64	1.3%	47	36.2%	46	39.1%	679	567	19.8%
AGGRAVATED ASSAULT TOTAL	332	6.8%	256	29.7%	268	23.9%	4118	4137	-0.5%
BURGLARY TOTAL	1086	22.4%	924	17.5%	923	17.7%	12021	11066	8.6%
RESIDENTIAL	725	15.0%	628	15.4%	681	6.5%	8441	7876	7.2%
COMMERCIAL	361	7.4%	296	22.0%	242	49.2%	3580	3190	12.2%
*****									
FORCE	904	18.6%	742	21.8%	729	24.0%	9774	8739	11.8%
NO FORCE	112	2.3%	113	-0.9%	125	-10.4%	1520	1639	-7.3%
ATTEMPT	70	1.4%	69	1.4%	69	1.4%	727	678	7.2%
LARCENY TOTAL	2368	48.8%	2178	8.7%	2069	14.5%	28129	26628	5.6%
\$200 AND OVER	1131	23.3%	1063	6.4%	951	18.9%	13706	13209	3.8%
\$50 TO \$200	474	9.8%	424	11.8%	432	9.7%	5240	4800	9.2%
UNDER \$50	763	15.7%	691	10.4%	686	11.2%	9183	8619	6.5%
*****									
FROM AUTO	1251	25.8%	1114	12.3%	985	27.0%	14511	14044	3.3%
BICYCLE	20	0.4%	22	-9.1%	10	100.0%	248	206	20.4%
SHOPLIFTING	246	5.1%	227	8.4%	255	-3.5%	2866	2777	3.2%
OTHERS	851	17.6%	815	4.4%	819	3.9%	10504	9601	9.4%
VEHICLE THEFT TOTAL	704	14.5%	536	31.3%	500	40.8%	6777	6840	-0.9%
ARSON TOTAL	26	0.5%	26	0.0%	23	13.0%	348	300	16.0%
TOTALS	4849	100.0%	4214	15.1%	4078	18.9%	54546	52024	4.8%
VIOLENT PROPERTY	665 4184	13.7% 86.3%	550 3664	20.9% 14.2%	563 3515	18.1% 19.0%	7271 47275	7190 44834	1.1% 5.4%

NOTE: Internal robbery breakdowns by armed and strong-arm in October reflect the late reclassification of some cases from previous months from armed robbery to strong-arm robbery.

NOTE: These totals include offenses reported to the Charlotte-Mecklenburg Police Department in accordance with the Uniform Crime Reporting Program. Totals for homicide do not include cases investigated by the police but classed by UCR guidelines as negligent manslaughter or as "justifiable homicide."

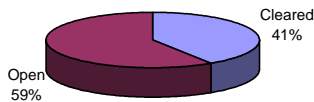


**INDEX CLEARANCES REPORTED BY THE CHARLOTTE-MECKLENBURG POLICE DEPARTMENT**

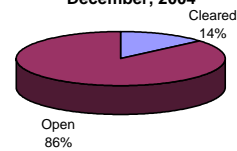
December, 2004 INDEX CLEARANCES	THIS MONTH:		LAST MONTH:		SAME MO. LAST YR:		THIS YEAR TO DATE:		LAST YEAR TO DATE:	
	NO.	%	NO.	%	NO.	%	NO.	%	NO.	%
MURDER & NON-NEGLIGENT MANSLAUGHTER	8	133.3%	5	83.3%	10	333.3%	45	75.0%	43	65.2%
RAPE TOTAL	22	137.5%	12	80.0%	22	104.8%	192	62.5%	230	76.9%
ACTUAL	19	146.2%	11	110.0%	23	104.5%	173	62.5%	209	78.6%
ATTEMPT	3	100.0%	1	20.0%	-1	100.0%	19	63.3%	21	63.6%
ROBBERY TOTAL	81	26.0%	62	22.7%	87	32.1%	681	24.4%	660	24.6%
ARMED	63	25.5%	47	20.8%	72	32.0%	495	23.5%	451	21.3%
STRONG-ARM	18	28.1%	15	31.9%	15	32.6%	186	27.4%	209	36.9%
AGGRAVATED ASSAULT TOTAL	123	37.0%	139	54.3%	205	76.5%	2056	49.9%	2984	72.1%
BURGLARY TOTAL	104	9.6%	165	17.9%	45	4.9%	1298	10.8%	1365	12.3%
RESIDENTIAL	86	11.9%	119	18.9%	36	5.3%	1050	12.4%	938	11.9%
COMMERCIAL	18	5.0%	46	15.5%	9	3.7%	248	6.9%	427	13.4%
LARCENY TOTAL	326	13.8%	369	16.9%	224	10.8%	3805	13.5%	3950	14.8%
FROM AUTO	29	2.3%	52	4.7%	30	3.0%	428	2.9%	435	3.1%
BICYCLE	1	5.0%	4	18.2%	0	0.0%	19	7.7%	23	11.2%
SHOPLIFTING	164	66.7%	173	76.2%	127	49.8%	1832	63.9%	1654	59.6%
OTHERS	132	15.5%	140	17.2%	67	8.2%	1526	14.5%	1712	17.8%
VEHICLE THEFT TOTAL	142	20.2%	96	17.9%	87	17.4%	1206	17.8%	1446	21.1%
ARSON TOTAL	13	50.0%	3	11.5%	9	39.1%	94	27.0%	78	26.0%
TOTALS	819	16.9%	851	20.2%	689	16.9%	9377	17.2%	10756	20.7%
VIOLENT PROPERTY	234	35.2%	218	39.6%	324	57.5%	2974	40.9%	3917	54.5%
	585	14.0%	633	17.3%	365	10.4%	6403	13.5%	6839	15.3%

NOTE: Clearances are reported in accordance with Uniform Crime Report guidelines. Since clearances are not counted until they are entered until they are entered into the Records system, any delays in processing may result in some clearances being reported in succeeding months. The significant increase in clearances in Nov., 2003, was the result of the entry of clearances from 2002 and 2003 that were processed in the Case Management system but were not entered in the mainframe Records system until that month.

**Year-to-Date Violent Index Clearance Rate  
Charlotte-Mecklenburg Police Department: 2004  
December, 2004**

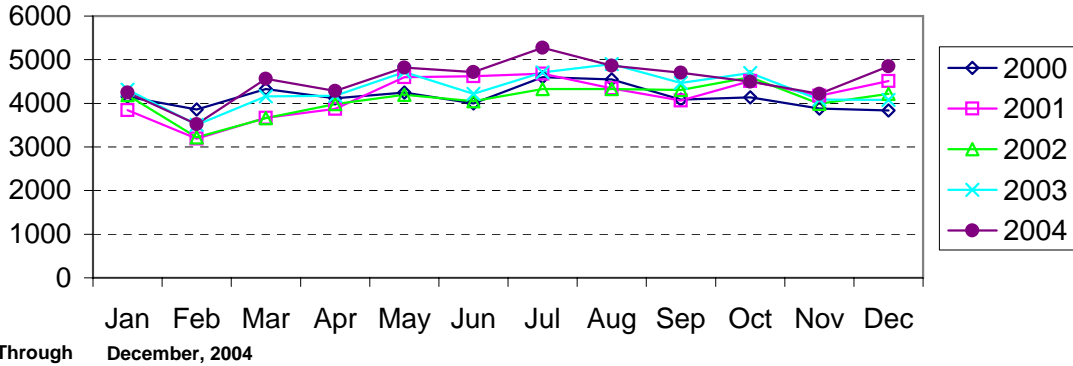


**Year-to-Date Property Index Clearance Rate  
Charlotte-Mecklenburg Police Department: 2004  
December, 2004**

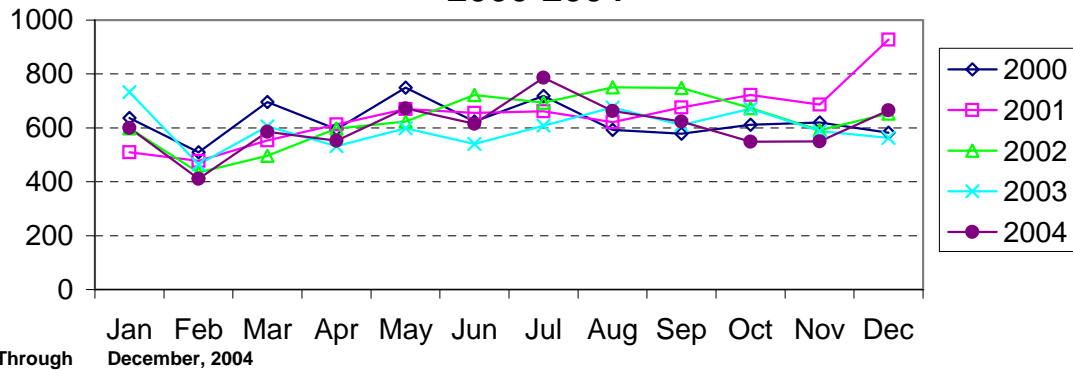


Clearance rates for crime reporting are calculated by dividing the number of crimes cleared during a designated time span by the number of crimes reported in the same period and converting the result to a percentage (multiplying by 100). Since cases from previous reporting periods can be cleared during the designated time span, the rate may be higher than 100%.

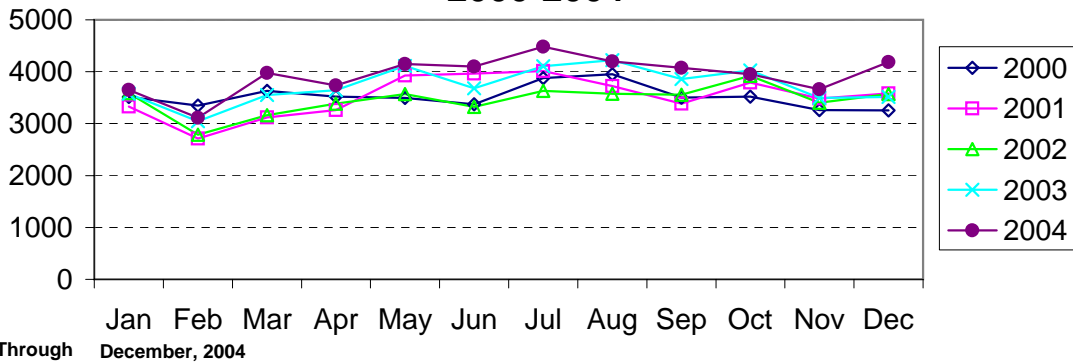
### Index Offenses Reported by Month Charlotte-Mecklenburg Police Department: 2000-2004



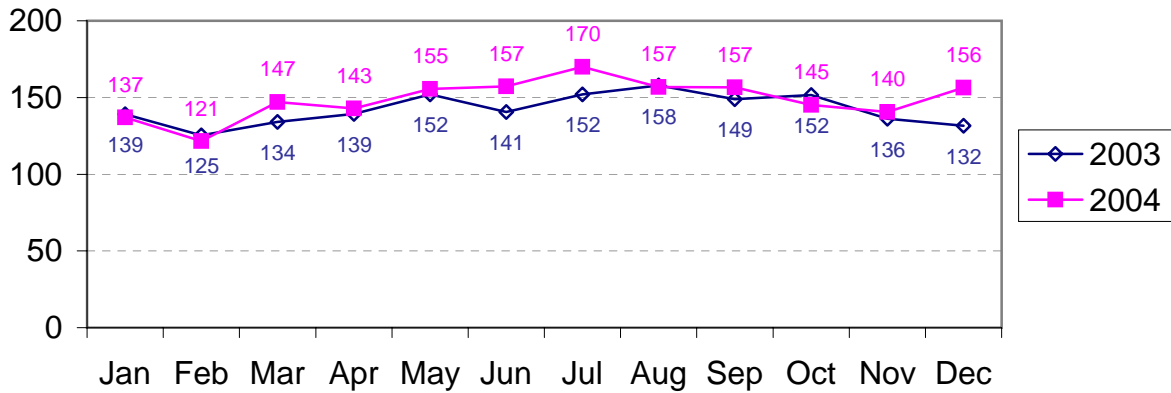
### Violent Index Offenses Reported by Month Charlotte-Mecklenburg Police Department: 2000-2004



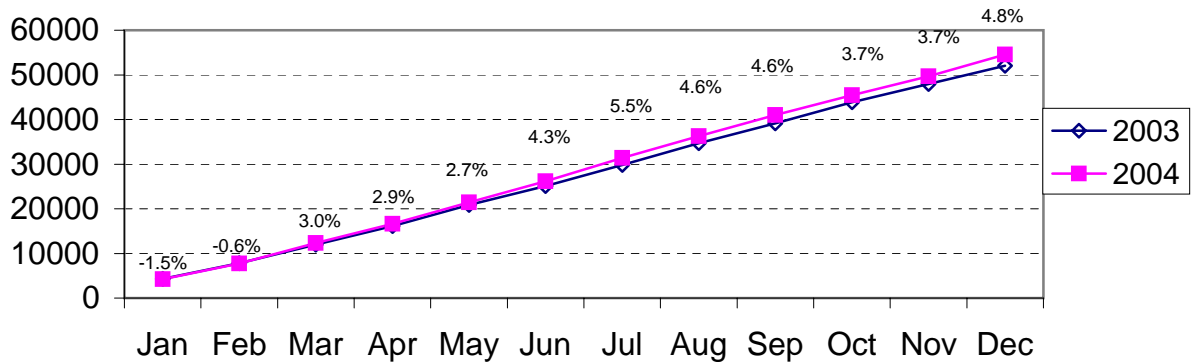
### Property Index Offenses Reported by Month Charlotte-Mecklenburg Police Department: 2000-2004



### Index Offense Per Day Average by Month Charlotte-Mecklenburg Police Department: 2003-2004

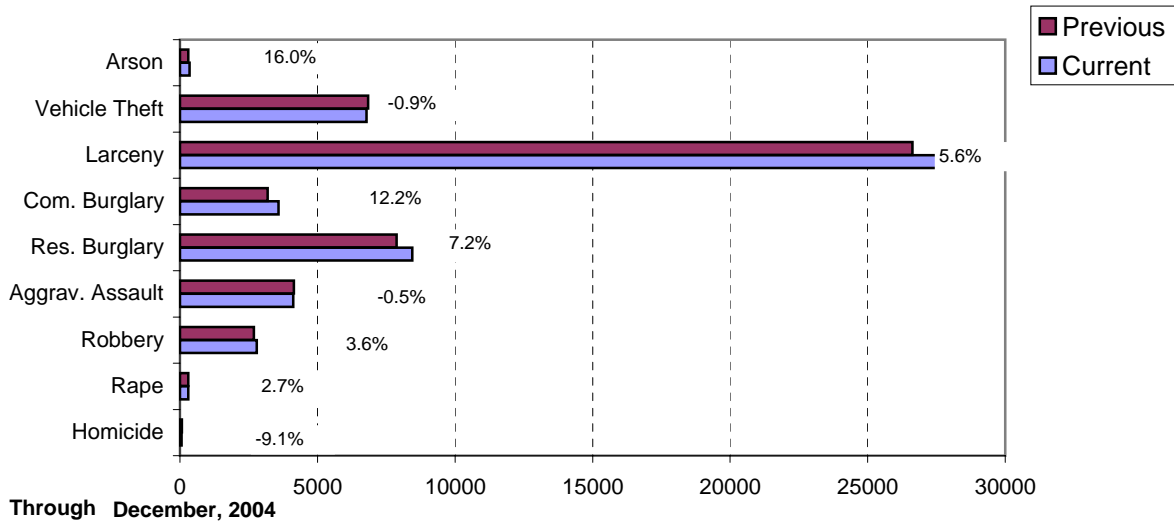


### Index Offenses Year-to-Date Cumulative Totals Charlotte-Mecklenburg Police Department: 2002-2003

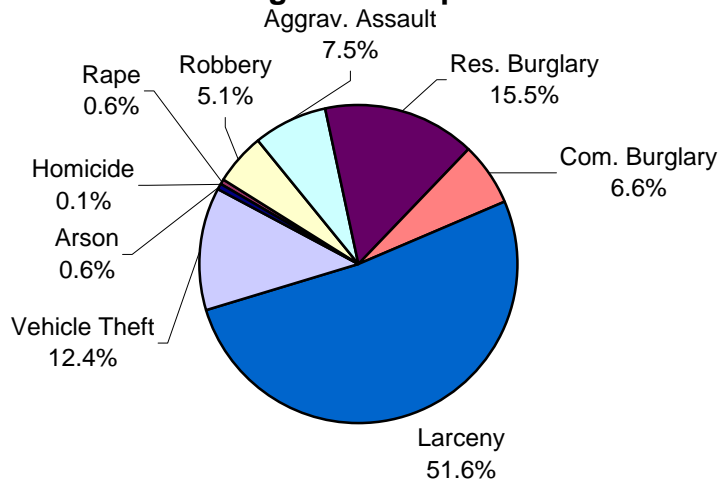


Through December, 2004

### Index Offenses in Current and Previous 12 Months Charlotte-Mecklenburg Police Department: 2003-2004

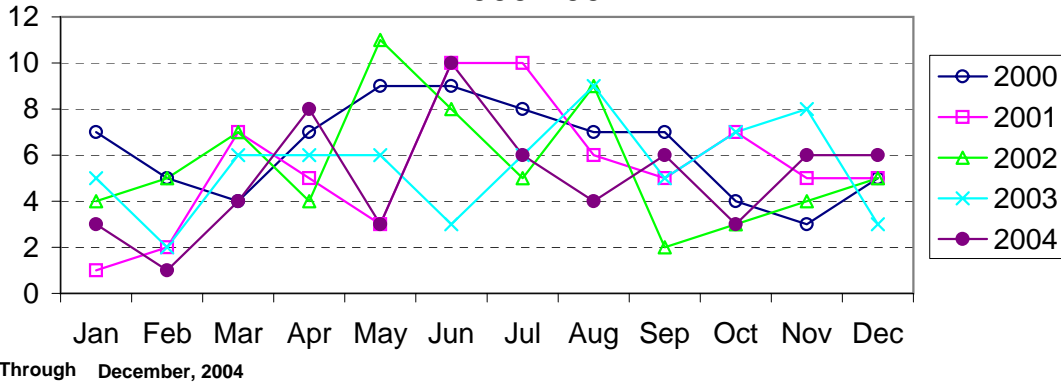


### Year-to-Date Index Offenses by Type Charlotte-Mecklenburg Police Department: 2004

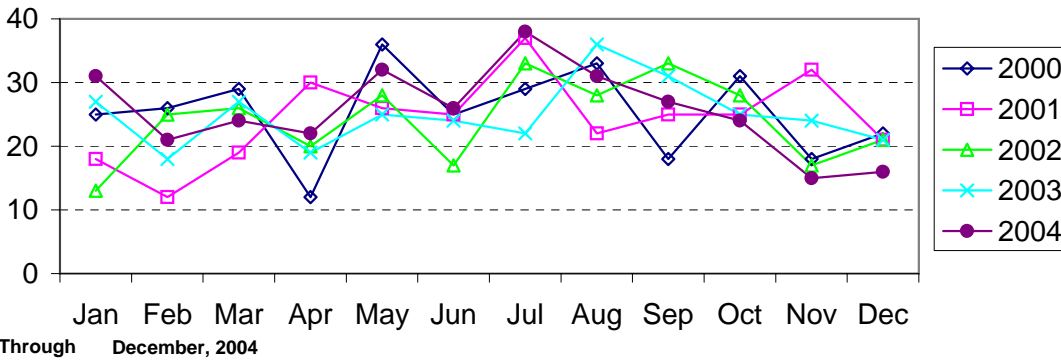


Through December,

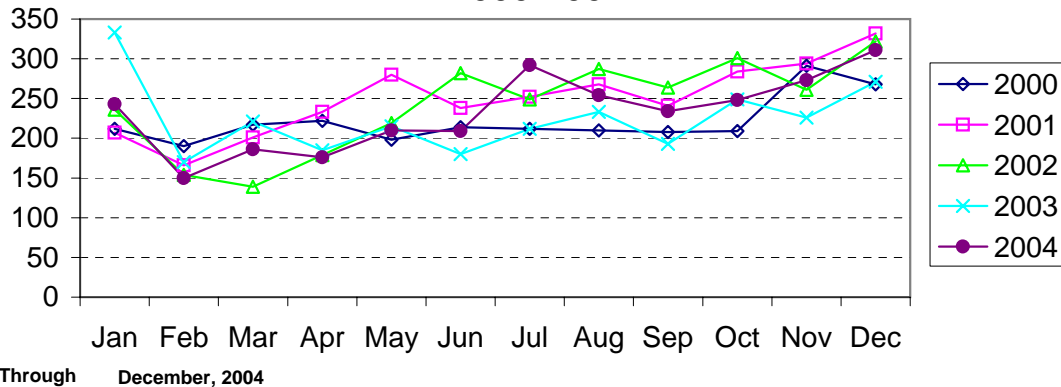
### Homicide Reported by Month Charlotte-Mecklenburg Police Department: 2000-2004



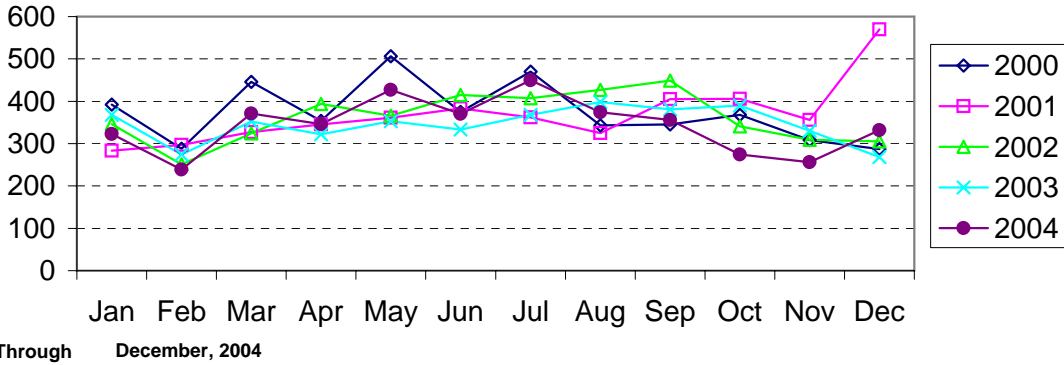
### Rape Reported by Month Charlotte-Mecklenburg Police Department: 2000-2004



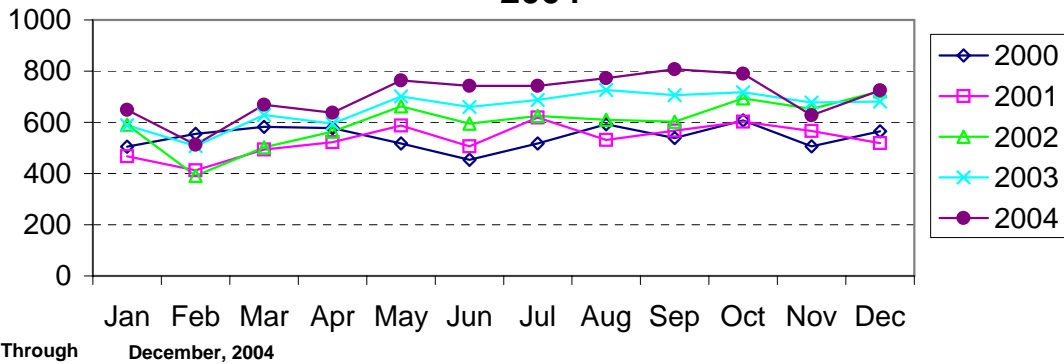
### Robbery Reported by Month Charlotte-Mecklenburg Police Department: 2000-2004



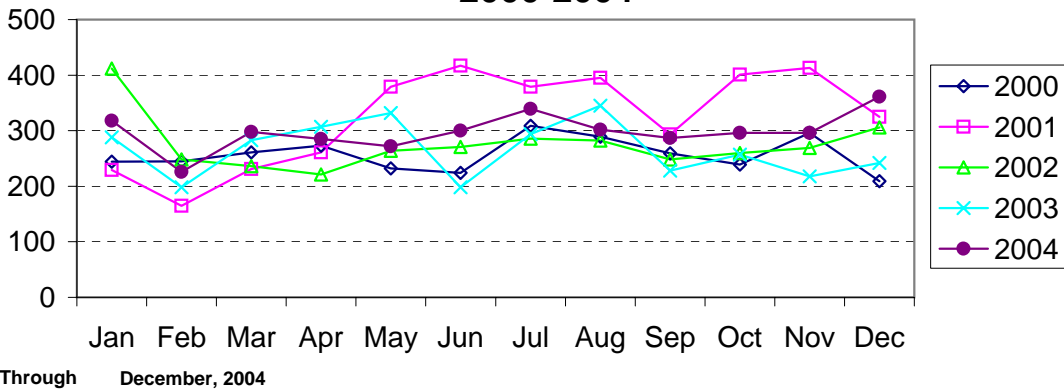
### Aggravated Assault Reported by Month Charlotte-Mecklenburg Police Department: 2000-2004



### Residential Burglary Reported by Month Charlotte-Mecklenburg Police Department: 2000- 2004

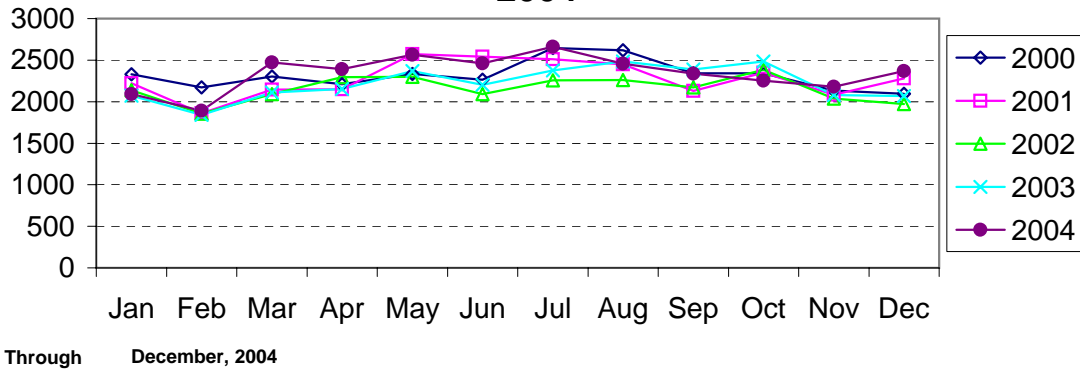


### Commercial Burglary Reported by Month Charlotte-Mecklenburg Police Department: 2000-2004

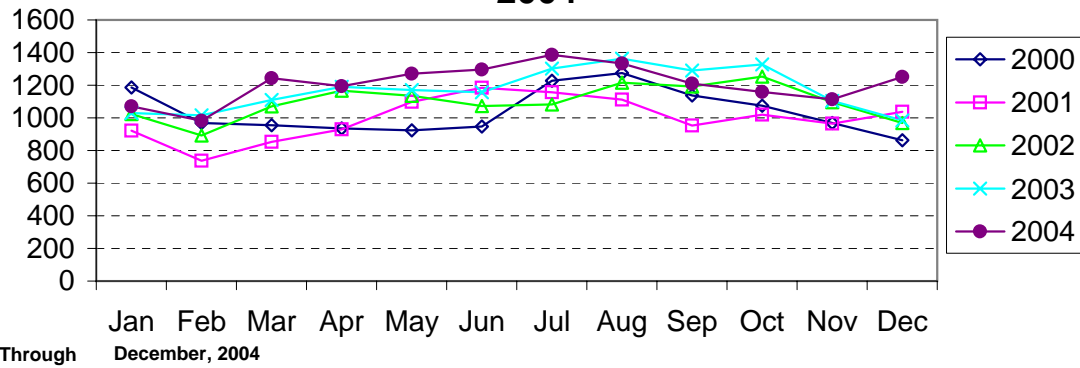




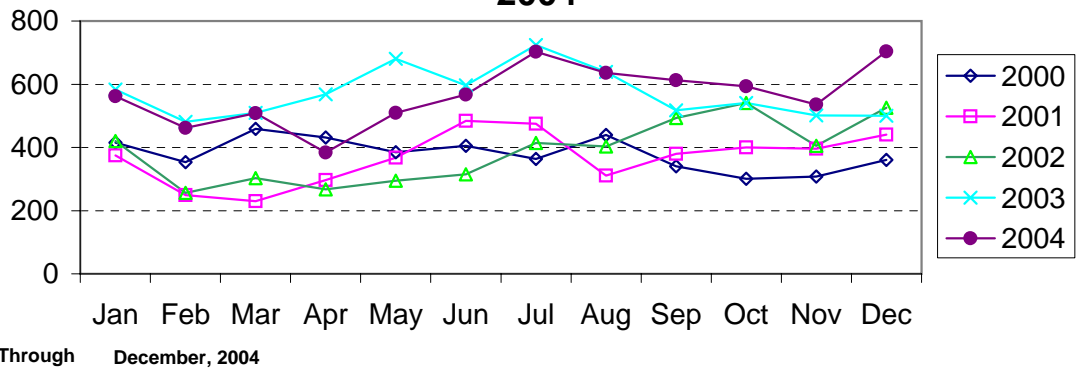
### Larceny Reported by Month Charlotte-Mecklenburg Police Department: 2000-2004



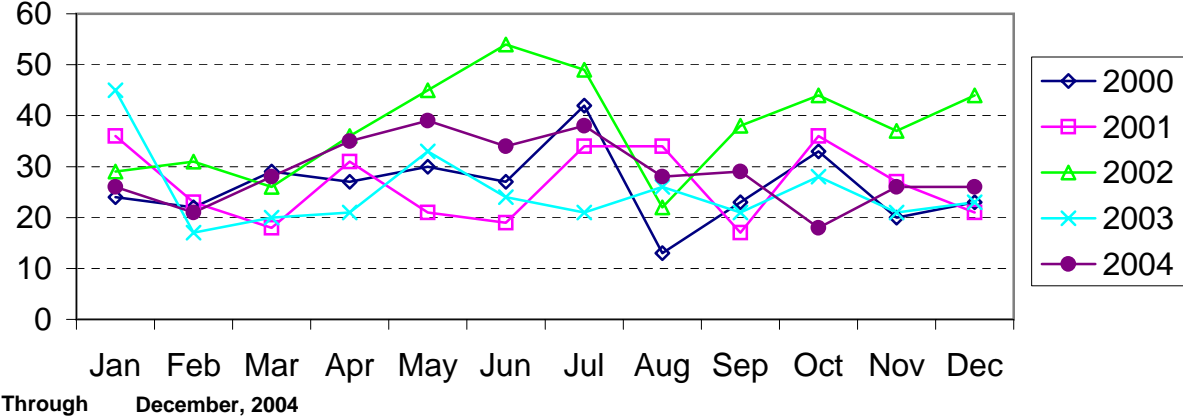
### Larceny from Vehicle Reported by Month Charlotte-Mecklenburg Police Department: 2000-2004



### Vehicle Theft Reported by Month Charlotte-Mecklenburg Police Department: 2000-2004



## Arson Reported by Month Charlotte-Mecklenburg Police Department: 2000-2004



Index Offenses Reported by Division and Service Area of Occurrence									
West Service Area: Jan-Dec, 2003-2004									
INDEX_CATEGORIES	Westover (A2)			Freedom (A3)			West Service Area		
	2003	2004	% Change	2003	2004	% Change	2003	2004	% Change
MURDER & NON-NEGLIGENT MANSLAUGHTER	7	1	-85.7%	9	5	-44.4%	16	6	-62.5%
RAPE	22	24	9.1%	43	34	-20.9%	65	58	-10.8%
ACTUAL	21	24	14.3%	37	33	-10.8%	58	57	-1.7%
ATTEMPTED	1	0	-100.0%	6	1	-83.3%	7	1	-85.7%
ROBBERY	230	221	-3.9%	272	307	12.9%	502	528	5.2%
ARMED	176	172	-2.3%	217	236	8.8%	393	408	3.8%
STRONG-ARM	54	49	-9.3%	55	71	29.1%	109	120	10.1%
AGGRAVATED ASSAULT	408	353	-13.5%	508	486	-4.3%	916	839	-8.4%
BURGLARY	869	895	3.0%	1397	1643	17.6%	2266	2538	12.0%
RESIDENTIAL	613	600	-2.1%	967	1086	12.3%	1580	1686	6.7%
COMMERCIAL	256	295	15.2%	430	557	29.5%	686	852	24.2%
LARCENY	1443	1784	23.6%	2397	2650	10.6%	3840	4434	15.5%
FROM AUTO	738	925	25.3%	1153	1264	9.6%	1891	2189	15.8%
BICYCLE	8	13	62.5%	16	17	6.3%	24	30	25.0%
SHOPLIFTING	144	131	-9.0%	216	265	22.7%	360	396	10.0%
OTHERS	553	715	29.3%	1012	1104	9.1%	1565	1819	16.2%
VEHICLE THEFT	449	492	9.6%	802	697	-13.1%	1251	1189	-5.0%
ARSON	22	27	22.7%	36	42	16.7%	58	69	19.0%
TOTALS	3450	3797	10.1%	5464	5864	7.3%	8914	9661	8.4%
VIOLENT	667	599	-10.2%	832	832	0.0%	1499	1431	-4.5%
PROPERTY	2783	3198	14.9%	4632	5032	8.6%	7415	8230	11.0%

Index Offenses Reported by Division and Service Area of Occurrence									
Southeast Service Area: Jan-Dec, 2003-2004									
INDEX_CATEGORIES	Providence (B1)			Independence (B3)			Southeast Service Area		
	2003	2004	% Change	2003	2004	% Change	2003	2004	% Change
MURDER & NON-NEGLIGENT MANSLAUGHTER	0	4	NA	6	6	0.0%	6	10	66.7%
RAPE	17	13	-23.5%	24	25	4.2%	41	38	-7.3%
ACTUAL	16	12	-25.0%	21	22	4.8%	37	34	-8.1%
ATTEMPTED	1	1	0.0%	3	3	0.0%	4	4	0.0%
ROBBERY	128	136	6.3%	212	245	15.6%	340	381	12.1%
ARMED	105	97	-7.6%	175	183	4.6%	280	280	0.0%
STRONG-ARM	23	39	69.6%	38	62	63.2%	61	101	65.6%
AGGRAVATED ASSAULT	191	169	-11.5%	314	328	4.5%	505	497	-1.6%
BURGLARY	834	826	-1.0%	992	1086	9.5%	1826	1912	4.7%
RESIDENTIAL	524	516	-1.5%	755	850	12.6%	1279	1366	6.8%
COMMERCIAL	310	310	0.0%	237	236	-0.4%	547	546	-0.2%
LARCENY	1796	1982	10.4%	2768	2328	-15.9%	4564	4310	-5.6%
FROM AUTO	847	914	7.9%	1639	1311	-20.0%	2486	2225	-10.5%
BICYCLE	15	18	20.0%	40	23	-42.5%	55	41	-25.5%
SHOPLIFTING	190	207	8.9%	234	199	-15.0%	424	406	-4.2%
OTHERS	744	843	13.3%	855	795	-7.0%	1599	1638	2.4%
VEHICLE THEFT	340	394	15.9%	728	683	-6.2%	1068	1077	0.8%
ARSON	11	17	54.5%	33	33	0.0%	44	50	13.6%
TOTALS	3317	3541	6.8%	5077	4734	-6.8%	8394	8275	-1.4%
VIOLENT	336	322	-4.2%	556	604	8.6%	892	926	3.8%
PROPERTY	2981	3219	8.0%	4521	4130	-8.6%	7502	7349	-2.0%

The data in the district breakdowns does not include a small number of offenses in which the location of the offense was unknown or was entered without a valid tract assignment. Districts are not equal in geographic size, demographics, zoning/development, and other factors that influence the rate of crimes committed in an area. Therefore, the comparison of raw offense totals across districts is not advisable.

Index Offenses Reported by Division and Service Area of Occurrence									
Northeast Service Area: Jan-Dec, 2003-2004									
INDEX_CATEGORIES	North (C1)			Hickory Grove (C3)			Northeast Service Area		
	2003	2004	% Change	2003	2004	% Change	2003	2004	% Change
MURDER & NON-NEGLIGENT MANSLAUGHTER	5	6	20.0%	8	4	-50.0%	13	10	-23.1%
RAPE	30	39	30.0%	33	35	6.1%	63	74	17.5%
ACTUAL	28	37	32.1%	26	29	11.5%	54	66	22.2%
ATTEMPTED	2	2	0.0%	7	6	-14.3%	9	8	-11.1%
ROBBERY	197	259	31.5%	264	236	-10.6%	461	495	7.4%
ARMED	159	202	27.0%	209	196	-6.2%	368	398	8.2%
STRONG-ARM	38	57	50.0%	55	40	-27.3%	93	97	4.3%
AGGRAVATED ASSAULT	334	349	4.5%	418	433	3.6%	752	782	4.0%
BURGLARY	1295	1614	24.6%	1147	1215	5.9%	2442	2829	15.8%
RESIDENTIAL	933	1130	21.1%	870	950	9.2%	1803	2080	15.4%
COMMERCIAL	362	484	33.7%	277	261	-5.8%	639	745	16.6%
LARCENY	3960	4206	6.2%	2306	2116	-8.2%	6266	6322	0.9%
FROM AUTO	2279	2376	4.3%	1227	1065	-13.2%	3506	3441	-1.9%
BICYCLE	11	22	100.0%	29	44	51.7%	40	66	65.0%
SHOPLIFTING	347	355	2.3%	229	147	-35.8%	576	502	-12.8%
OTHERS	1323	1453	9.8%	821	860	4.8%	2144	2313	7.9%
VEHICLE THEFT	778	872	12.1%	821	721	-12.2%	1599	1593	-0.4%
ARSON	36	44	22.2%	36	44	22.2%	72	88	22.2%
TOTALS	6635	7389	11.4%	5033	4804	-4.5%	11668	12193	4.5%
VIOLENT	566	653	15.4%	723	708	-2.1%	1289	1361	5.6%
PROPERTY	6069	6736	11.0%	4310	4096	-5.0%	10379	10832	4.4%

Index Offenses Reported by Division and Service Area of Occurrence									
Central Service Area: Jan-Dec, 2003-2004									
INDEX_CATEGORIES	Central (D1)			Metro (D2)			Central Service Area		
	2003	2004	% Change	2003	2004	% Change	2003	2004	% Change
MURDER & NON-NEGLIGENT MANSLAUGHTER	2	1	-50.0%	6	8	33.3%	8	9	12.5%
RAPE	16	18	12.5%	20	23	15.0%	36	41	13.9%
ACTUAL	15	17	13.3%	17	22	29.4%	32	39	21.9%
ATTEMPTED	1	1	0.0%	3	1	-66.7%	4	2	-50.0%
ROBBERY	122	132	8.2%	175	213	21.7%	297	345	16.2%
ARMED	74	78	5.4%	137	164	19.7%	211	242	14.7%
STRONG-ARM	48	54	12.5%	38	49	28.9%	86	103	19.8%
AGGRAVATED ASSAULT	174	157	-9.8%	400	416	4.0%	574	573	-0.2%
BURGLARY	389	396	1.8%	533	674	26.5%	922	1070	16.1%
RESIDENTIAL	213	174	-18.3%	400	494	23.5%	613	668	9.0%
COMMERCIAL	176	222	26.1%	133	180	35.3%	309	402	30.1%
LARCENY	2003	2036	1.6%	1059	960	-9.3%	3062	2996	-2.2%
FROM AUTO	1166	1121	-3.9%	597	432	-27.6%	1763	1553	-11.9%
BICYCLE	10	22	120.0%	14	10	-28.6%	24	32	33.3%
SHOPLIFTING	72	76	5.6%	47	62	31.9%	119	138	16.0%
OTHERS	755	818	8.3%	401	457	14.0%	1156	1275	10.3%
VEHICLE THEFT	457	340	-25.6%	400	322	-19.5%	857	662	-22.8%
ARSON	14	7	-50.0%	19	15	-21.1%	33	22	-33.3%
TOTALS	3177	3087	-2.8%	2612	2631	0.7%	5789	5718	-1.2%
VIOLENT	314	308	-1.9%	601	660	9.8%	915	968	5.8%
PROPERTY	2863	2779	-2.9%	2011	1971	-2.0%	4874	4750	-2.5%

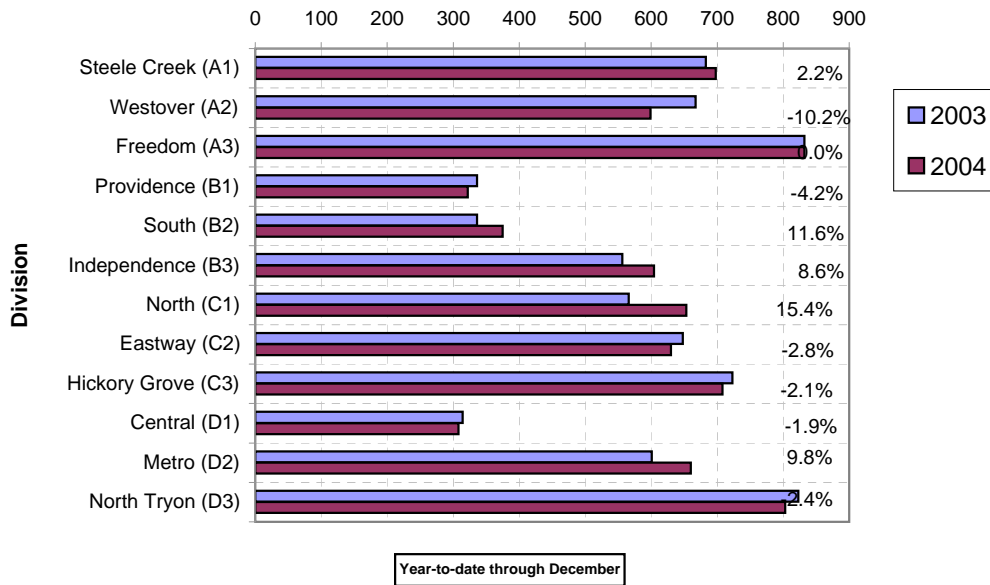
The data in the district breakdowns does not include a small number of offenses in which the location of the offense was unknown or was entered without a valid tract assignment. Districts are not equal in geographic size, demographics, zoning/development, and other factors that influence the rate of crimes committed in an area. Therefore, the comparison of raw offense totals across districts is not advisable.

Index Offenses Reported by Division and Service Area of Occurrence									
East Service Area: Jan-Dec, 2003-2004									
INDEX_CATEGORIES	Eastway (C2)			North Tryon (D3)			East Service Area		
	2003	2004	% Change	2003	2004	% Change	2003	2004	% Change
MURDER & NON-NEGLIGENT MANSLAUGHTER	4	6	50.0%	8	11	37.5%	12	17	41.7%
RAPE	20	21	5.0%	20	21	5.0%	40	42	5.0%
ACTUAL	20	17	-15.0%	20	17	-15.0%	40	34	-15.0%
ATTEMPTED	0	4	NA	0	4	NA	0	8	NA
ROBBERY	330	308	-6.7%	325	304	-6.5%	655	612	-6.6%
ARMED	256	230	-10.2%	268	226	-15.7%	524	456	-13.0%
STRONG-ARM	74	78	5.4%	57	78	36.8%	131	156	19.1%
AGGRAVATED ASSAULT	294	295	0.3%	470	467	-0.6%	764	762	-0.3%
BURGLARY	926	990	6.9%	772	752	-2.6%	1698	1742	2.6%
RESIDENTIAL	686	742	8.2%	512	500	-2.3%	1198	1242	3.7%
COMMERCIAL	240	248	3.3%	260	252	-3.1%	500	500	0.0%
LARCENY	2206	2287	3.7%	1186	1315	10.9%	3392	3602	6.2%
FROM AUTO	955	823	-13.8%	619	633	2.3%	1574	1456	-7.5%
BICYCLE	15	28	86.7%	11	9	-18.2%	26	37	42.3%
SHOPLIFTING	564	754	33.7%	84	98	16.7%	648	852	31.5%
OTHERS	672	682	1.5%	472	575	21.8%	1144	1257	9.9%
VEHICLE THEFT	520	541	4.0%	509	465	-8.6%	1029	1006	-2.2%
ARSON	17	28	64.7%	9	14	55.6%	26	42	61.5%
TOTALS	4317	4476	3.7%	3299	3349	1.5%	7616	7825	2.7%
VIOLENT	648	630	-2.8%	823	803	-2.4%	1471	1433	-2.6%
PROPERTY	3669	3846	4.8%	2476	2546	2.8%	6145	6392	4.0%

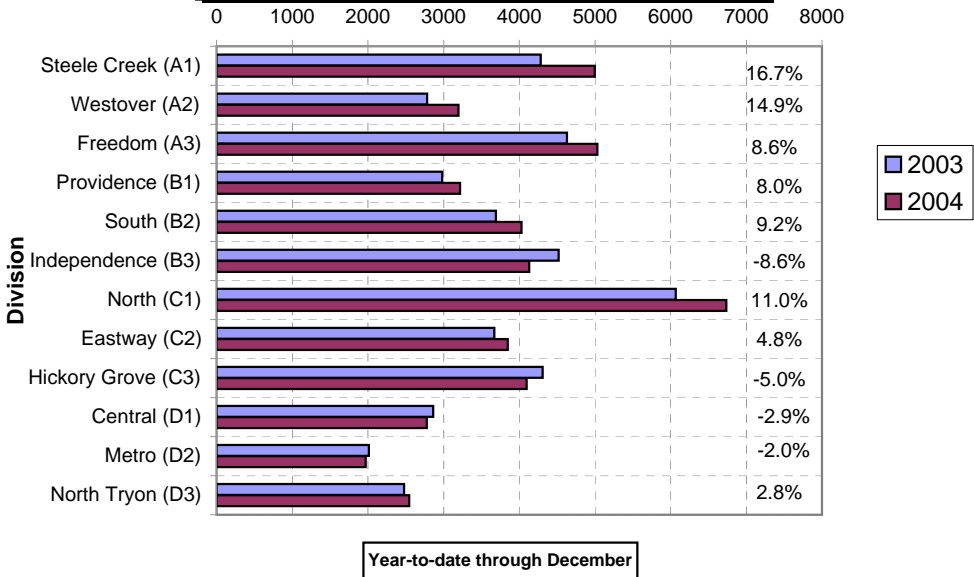
Index Offenses Reported by Division and Service Area of Occurrence									
South Service Area: Jan-Dec, 2003-2004									
INDEX_CATEGORIES	Steele Creek (A1)			South (B2)			South Service Area		
	2003	2004	% Change	2003	2004	% Change	2003	2004	% Change
MURDER & NON-NEGLIGENT MANSLAUGHTER	8	7	-12.5%	3	1	-66.7%	11	8	-27.3%
RAPE	29	26	-10.3%	21	16	-23.8%	50	42	-16.0%
ACTUAL	25	22	-12.0%	17	13	-23.5%	42	35	-16.7%
ATTEMPTED	4	4	0.0%	4	3	-25.0%	8	7	-12.5%
ROBBERY	269	259	-3.7%	133	140	5.3%	402	399	-0.7%
ARMED	211	202	-4.3%	101	101	0.0%	312	303	-2.9%
STRONG-ARM	48	57	18.8%	32	39	21.9%	80	96	20.0%
AGGRAVATED ASSAULT	377	406	7.7%	179	218	21.8%	556	624	12.2%
BURGLARY	881	992	12.6%	914	863	-5.6%	1795	1855	3.3%
RESIDENTIAL	613	626	2.1%	720	673	-6.5%	1333	1299	-2.6%
COMMERCIAL	268	366	36.6%	194	190	-2.1%	462	556	20.3%
LARCENY	2799	3319	18.6%	2382	2642	10.9%	5181	5961	15.1%
FROM AUTO	1336	1880	40.7%	1317	1500	13.9%	2653	3380	27.4%
BICYCLE	19	25	31.6%	17	16	-5.9%	36	41	13.9%
SHOPLIFTING	455	403	-11.4%	170	151	-11.2%	625	554	-11.4%
OTHERS	989	1011	2.2%	878	975	11.0%	1867	1986	6.4%
VEHICLE THEFT	569	647	13.7%	370	492	33.0%	939	1139	21.3%
ARSON	34	41	20.6%	24	32	33.3%	58	73	25.9%
TOTALS	4966	5697	14.7%	4026	4404	9.4%	8992	10101	12.3%
VIOLENT	683	698	2.2%	336	375	11.6%	1019	1073	5.3%
PROPERTY	4283	4999	16.7%	3690	4029	9.2%	7973	9028	13.2%

The data in the district breakdowns does not include a small number of offenses in which the location of the offense was unknown or was entered without a valid tract assignment. Districts are not equal in geographic size, demographics, zoning/development, and other factors that influence the rate of crimes committed in an area. Therefore, the comparison of raw offense totals across districts is not advisable.

**Violent Index Offenses by District Year-to-Date  
Charlotte-Mecklenburg Police Dept.: 2003- 2004**



**Property Index Offenses by District Year-to-Date  
Charlotte-Mecklenburg Police Dept.: 2003-2004**



The data in the district breakdowns does not include a small number of offenses in which the location of the offense was unknown or was entered without a valid tract assignment. Districts are not equal in geographic size, demographics, zoning/development, and other factors that influence the rate of crimes committed in an area. Therefore, the comparison of raw offense totals across districts is not advisable.

**Arrests by Charlotte-Mecklenburg Police Department**  
**Year-To-Date: 2003-2004**  
**(Through December)**

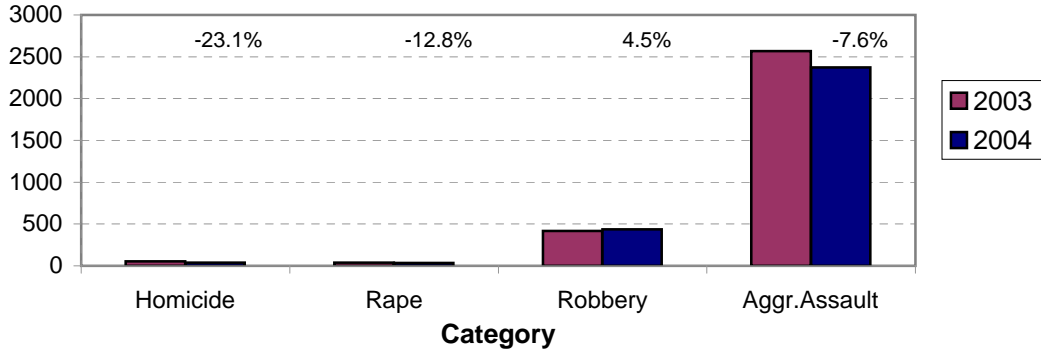
CATEGORY	ADULTS (AGE 18 & OLDER):			JUVENILES ( UNDER 18):			TOTAL ARRESTS:		
	2003 Y-T-D	2004 Y-T-D	% CHANGE	2003 Y-T-D	2004 Y-T-D	% CHANGE	2003 Y-T-D	2004 Y-T-D	% CHANGE
Murder/Non-Negligent Manslaughter	45	37	-17.8%	7	3	-57.1%	52	40	-23.1%
Negligent & Vehicular Manslaughter	1	4	300.0%	0	0	NA	1	4	300.0%
Rape	33	32	-3.0%	6	2	-66.7%	39	34	-12.8%
Robbery	299	297	-0.7%	120	141	17.5%	419	438	4.5%
Aggravated Assault	2198	2055	-6.5%	370	318	-14.1%	2568	2373	-7.6%
Burglary	492	582	18.3%	226	215	-4.9%	718	797	11.0%
Larceny	1510	1586	5.0%	648	596	-8.0%	2158	2182	1.1%
Vehicle Theft	147	75	-49.0%	365	152	-58.4%	512	227	-55.7%
Non-Aggravated Assault	1718	1822	6.1%	914	801	-12.4%	2632	2623	-0.3%
Arson	21	16	-23.8%	30	36	20.0%	51	52	2.0%
Forgery/Counterfiet	132	143	8.3%	4	2	-50.0%	136	145	6.6%
Fraud	575	551	-4.2%	8	9	12.5%	583	560	-3.9%
Embezzlement	110	93	-15.5%	4	13	225.0%	114	106	-7.0%
Stolen Property	524	527	0.6%	151	104	-31.1%	675	631	-6.5%
Vandalism	239	226	-5.4%	204	200	-2.0%	443	426	-3.8%
Weapons	482	437	-9.3%	72	60	-16.7%	554	497	-10.3%
Prostitution	339	363	7.1%	3	8	166.7%	342	371	8.5%
Sex Offenses	224	193	-13.8%	41	18	-56.1%	265	211	-20.4%
Drugs	3054	2685	-12.1%	297	262	-11.8%	3351	2947	-12.1%
Gambling	26	20	-23.1%	0	0	NA	26	20	-23.1%
Offenses vs. Family	11	5	-54.5%	0	1	NA	11	6	-45.5%
DUI	2115	1959	-7.4%	10	11	10.0%	2125	1970	-7.3%
Liquor	185	211	14.1%	14	10	-28.6%	199	221	11.1%
Disorder.Conduct	585	573	-2.1%	301	302	0.3%	886	875	-1.2%
Other Non-Traffic	7572	7943	4.9%	798	762	-4.5%	8370	8705	4.0%
<b>VIOLENT INDEX<sup>1</sup></b>	2575	2421	-6.0%	503	464	-7.8%	3078	2885	-6.3%
<b>PROPERTY INDEX<sup>2</sup></b>	2170	2259	4.1%	1269	999	-21.3%	3439	3258	-5.3%
<b>INDEX SUBTOTAL</b>	4745	4680	-1.4%	1772	1463	-17.4%	6517	6143	-5.7%
<b>PART 2 SUBTOTAL<sup>3</sup></b>	17892	17755	-0.8%	2821	2563	-9.1%	20713	20318	-1.9%
<b>TOTAL</b>	22637	22435	-0.9%	4593	4026	-12.3%	27230	26461	-2.8%

<sup>1</sup>Violent Index includes murder and non-negligent manslaughter, rape, robbery, and aggravated assault.

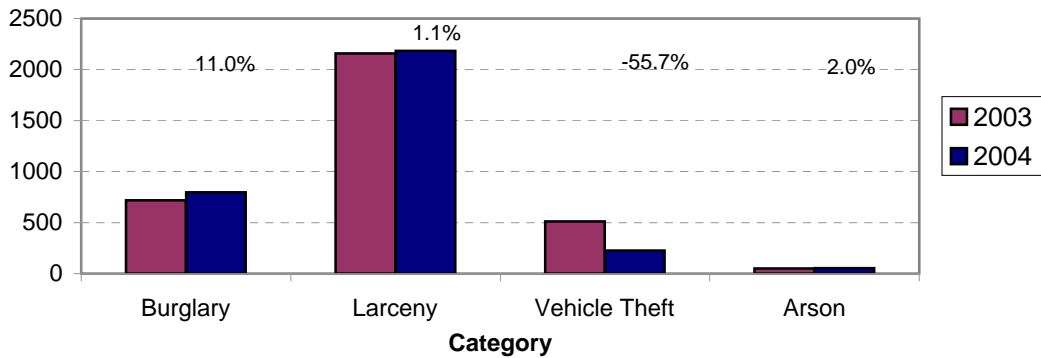
<sup>2</sup>Property Index includes burglary, larceny, vehicle theft, and arson.

<sup>3</sup>Part 2 crimes include non-traffic crimes not counted in the Index totals.

**Violent Index Arrests Year-to-Date  
Charlotte-Mecklenburg Police Department: 2003-2004  
(Through December)**

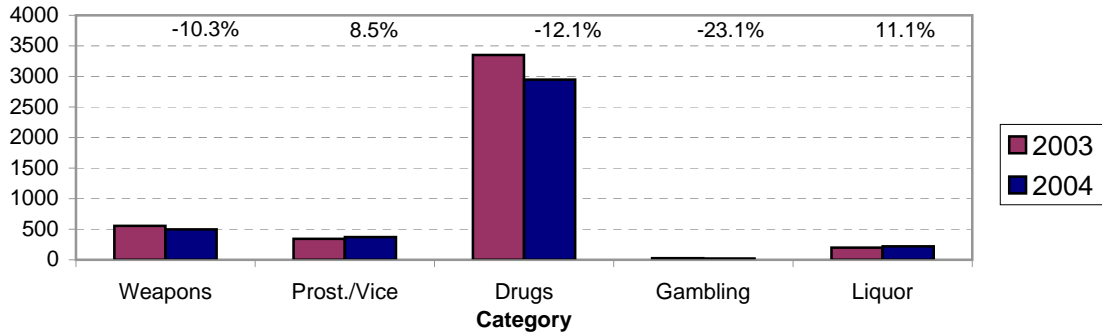


**Property Index Arrests Year-to-Date  
Charlotte-Mecklenburg Police Department: 2003-2004  
(Through December)**

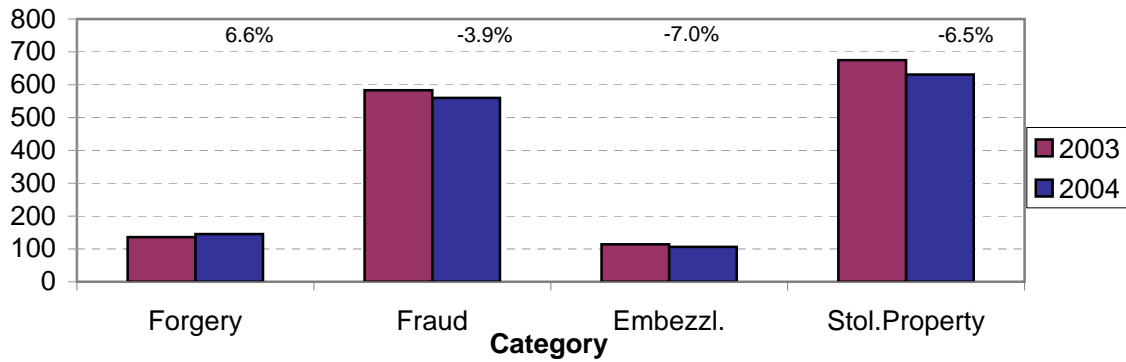




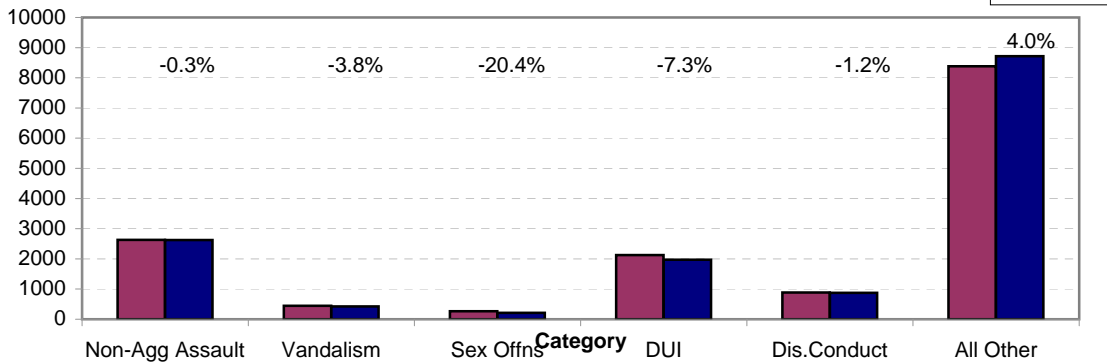
**Arrests for Vice/CCW/Drugs/Etc. Year-to-Date  
Charlotte-Mecklenburg Police Department: 2003 - 2004  
(Through December)**



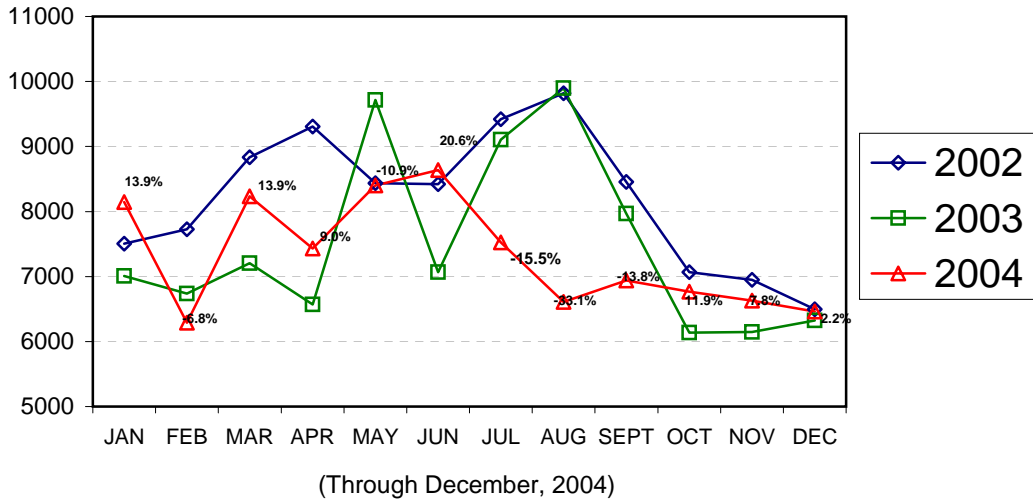
**Arrests for Property/White Collar Crime Year-to-Date  
Charlotte-Mecklenburg Police Department: 2003 - 2004  
(Through December)**



**Arrests for Other Categories Year-to-Date  
Charlotte-Mecklenburg Police Department: 2003 - 2004  
(Through December)**

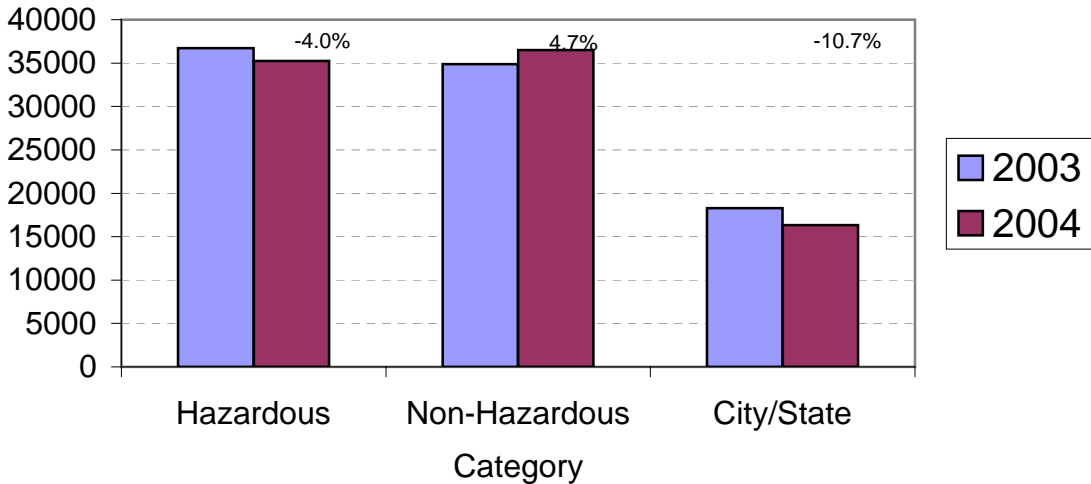


### Total Citation Enforcement by Month Charlotte-Mecklenburg Police Dept.: 2002-2004

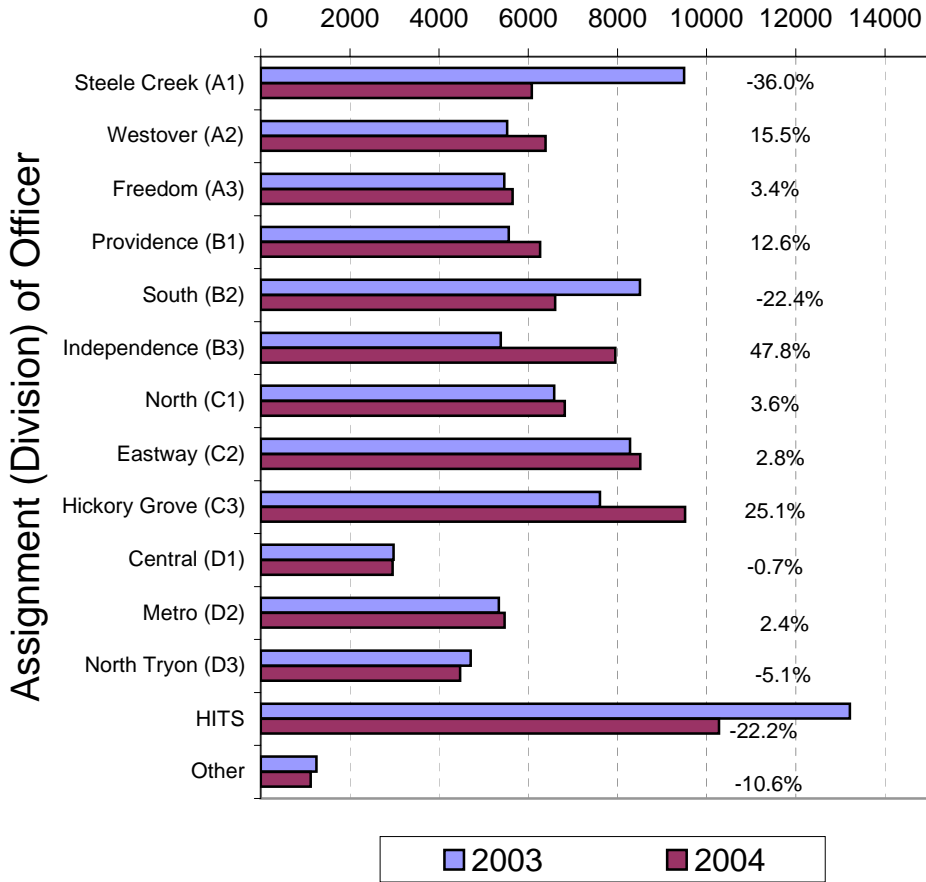


(Includes Hazardous, Non-Hazardous, and City/State Citations)

### CMPD Citation Enforcement by Category Year-to-Date, 2003 - 2004 (Through December, 2004)



**Citations Issued Year-to-Date by CMPD Divisions  
2003 - 2004  
(Through December, 2004)**



Note: 2003 and 2004 data for HITS and Other was adjusted in April, 2004.

**Citations Issued by the Charlotte Mecklenburg Police Officers Year-to-Date  
(Through December, 2004)**

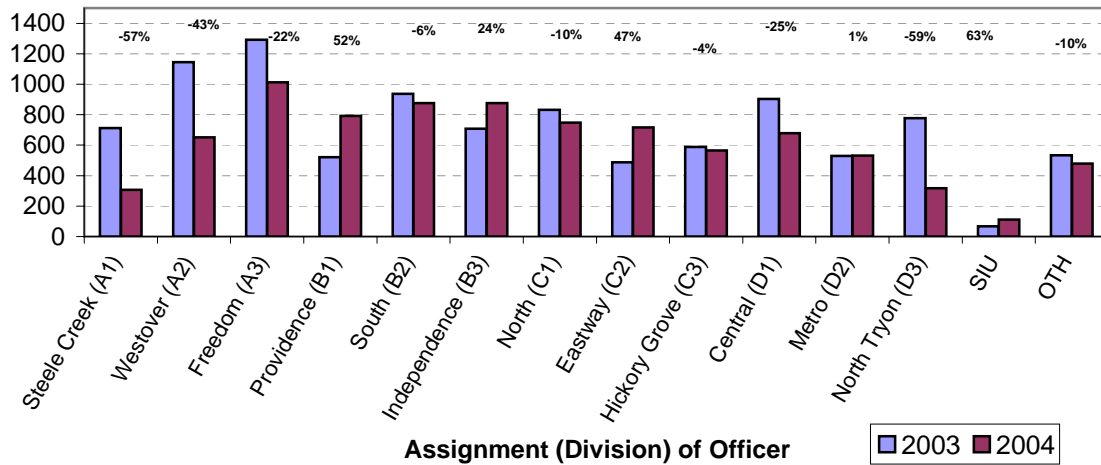
Total Citations	2003	2004	% Change
Hazardous	36,725	35,248	-4.0%
Non-Hazardous	34,874	36,504	4.7%
Other City/State Statute/Ordinance	18,280	16,316	-10.7%
<b>Total</b>	<b>89,879</b>	<b>88,068</b>	<b>-2.0%</b>

**"Safe Speed" Program: Initiated August, 2004 (Through December, 2004)**

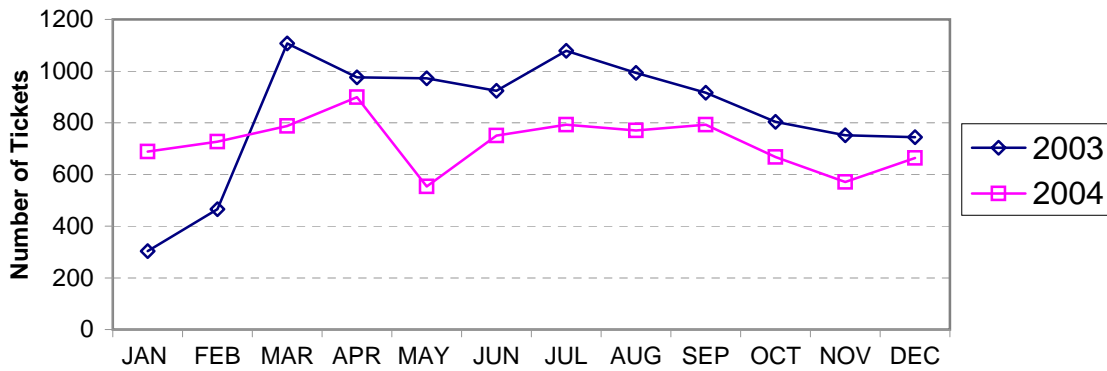
Total Citations	8930
-----------------	------

(Citations issued through the "Safe Speed" program are not included in the CMPD citation totals used in the summary chart above or in the other citation charts.)

**Warning Tickets Issued by CMPD Division  
Year-to-Date, 2003 - 2004  
Through December,**



**Total Warning Tickets Issued by CMPD  
By Month: 2003 - 2004**



**Warning Tickets Issued by CMPD Year-to-Date  
Through December, 2004**

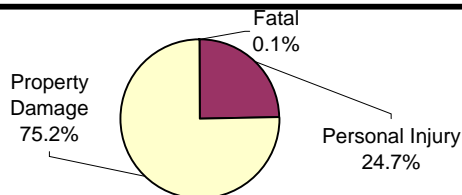
	2003	2004	% Change
<b>Total Warning Tickets</b>	10037	8662	-13.7%

**Traffic Collison Reports**  
**Charlotte-Mecklenburg Police Department**  
**Year-to-Date: 2003-2004**  
**(Through December)**

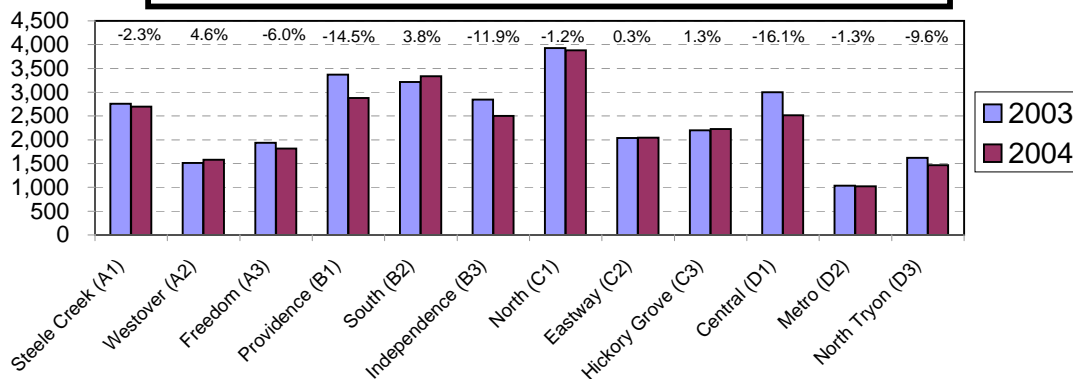
<u>Type</u>	<u>2003</u>	<u>2004</u>	<u>% Change</u>
Fatal Collisions	54	37	-31.5%
Vehicle Occupants Killed	50	33	-34.0%
Pedestrians Killed	8	6	-25.0%
Personal Injury Collisions	7438	6886	-7.6%
Property Damage Collisions	22114	21123	-4.5%
Total Collisions	29606	28046	-5.3%

\* The number of fatal collisions and the number of persons killed (fatalities) in those incidents is taken from the HITS file. Their records are updated for deaths that occur after the initial report is filed.

**Traffic Collisions Reported by Type**  
**Charlotte-Mecklenburg Police Department:**  
**2004 Year-to-Date**  
**(Through December)**



**Traffic Collisions Reported by Charlotte-Mecklenburg Police Dept.**  
**Year-to-Date By Location (Division) : 2003 -2004**  
**(Through December)**



Uniform Crime Reporting Procedures:

The Charlotte-Mecklenburg Police Department reports offense and arrest statistics in accordance with standard Uniform Crime Reporting (UCR) guidelines. UCR policy states that any adjustments to previous months can be made on the current month's report:

...In tabulating crime counts, an agency may find that offense totals for past months require adjustments due to developments in the investigation or other handling of the matter. It may be necessary to adjust totals reported to UCR for the past month or prior months. Needed adjustments can be made on the current month's report and do not affect the reliability of the figures in that such adjustments tend to equalize each other from month to month over a period of time.

- *Uniform Crime Reporting Handbook*, FBI, 1984, p. 42-43

We are required to report crime monthly to the UCR program, and we do therefore make an effort to process monthly changes in a timely manner. However, occasionally due to the review and processing required for reclassifying, unfounding or clearing cases, the current month's totals may reflect the processing of a backlog of these changes from previous months.

Users of the data are cautioned that conclusions about substantial changes in crime trends or in clearance rates based on only a single month's data or trend may reflect some of these adjustments. For this reason, in addition to the monthly and year-to-date trends on Page 1, the monthly report routinely includes a comparison for the previous 12 months (p. 4), as well as graphs that provide seasonal/monthly comparisons over a five-year period (p. 5-8).

This report was compiled by the Research, Planning, and Analysis Division.

We make an effort to present the most accurate information available at the time this report is published. Please notify the Research, Planning, and Analysis office if you have any questions about the data in this report or about an error that was missed in proofing the report.

The division names adopted in 2003 are used in this report. For ease of use, they also include the old district designations in parentheses.