



---

**CHARLOTTE-MECKLENBURG POLICE DEPARTMENT  
MONTHLY SUMMARY REPORT  
AUGUST, 2005**

---

---

**Darrel Stephens  
Chief of Police**

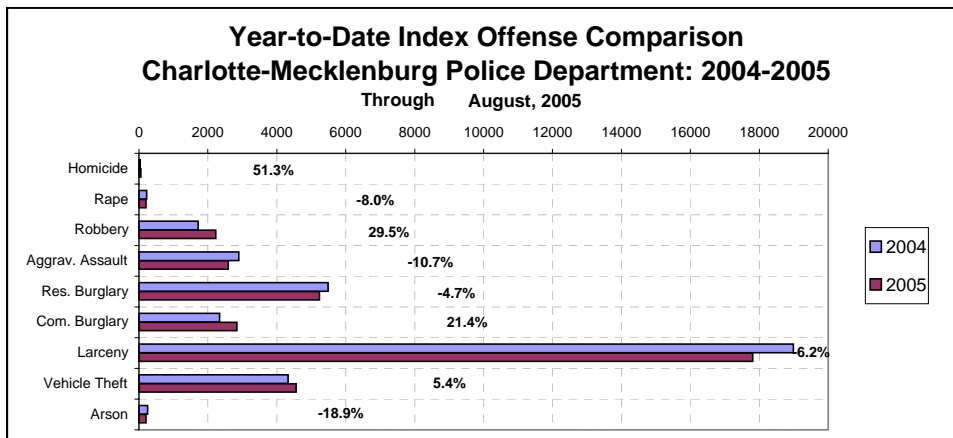
---

**INDEX OFFENSES REPORTED TO CHARLOTTE-MECKLENBURG POLICE DEPARTMENT**

August, 2005 INDEX OFFENSES	# THIS MONTH	% OF ALL INDEX	# LAST MONTH	MONTHLY % CHANGE	SAME MONTH LAST YEAR	MONTHLY % CHANGE	THIS YEAR TO DATE	LAST YEAR TO DATE	ANNUAL % CHANGE
HOMICIDE (MURDER & NON-NEGLIGENT MANSLAUGHTER)	10	0.2%	12	-16.7%	4	150.0%	59	39	51.3%
RAPE TOTAL	20	0.4%	30	-33.3%	31	-35.5%	207	225	-8.0%
ACTUAL	19	0.4%	29	-34.5%	29	-34.5%	195	209	-6.7%
ATTEMPT	1	0.0%	1	0.0%	2	-50.0%	12	16	-25.0%
ROBBERY TOTAL	333	6.8%	316	5.4%	254	31.1%	2228	1720	29.5%
ARMED	292	6.0%	247	18.2%	211	38.4%	1814	1338	35.6%
STRONG-ARM	41	0.8%	69	-40.6%	43	-4.7%	414	382	8.4%
AGGRAVATED ASSAULT TOTAL	388	7.9%	385	0.8%	374	3.7%	2590	2900	-10.7%
BURGLARY TOTAL	1075	22.0%	1046	2.8%	1075	0.0%	8074	7830	3.1%
RESIDENTIAL	716	14.7%	682	5.0%	773	-7.4%	5234	5490	-4.7%
COMMERCIAL	359	7.3%	364	-1.4%	302	18.9%	2840	2340	21.4%
*****									
FORCE	849	17.4%	860	-1.3%	904	-6.1%	6559	6324	3.7%
NO FORCE	159	3.3%	120	32.5%	113	40.7%	1004	1046	-4.0%
ATTEMPT	66	1.4%	66	0.0%	58	13.8%	510	460	10.9%
LARCENY TOTAL	2417	49.5%	2316	4.4%	2458	-1.7%	17813	18991	-6.2%
\$200 AND OVER	1195	24.5%	1146	4.3%	1181	1.2%	8761	9239	-5.2%
\$50 TO \$200	493	10.1%	437	12.8%	442	11.5%	3506	3449	1.7%
UNDER \$50	729	14.9%	733	-0.5%	835	-12.7%	5546	6303	-12.0%
*****									
FROM AUTO	1234	25.3%	1144	7.9%	1334	-7.5%	8920	9778	-8.8%
BICYCLE	33	0.7%	32	3.1%	20	65.0%	158	160	-1.3%
SHOPLIFTING	226	4.6%	227	-0.4%	245	-7.8%	1729	1979	-12.6%
OTHERS	924	18.9%	913	1.2%	859	7.6%	7006	7074	-1.0%
VEHICLE THEFT TOTAL	613	12.5%	600	2.2%	636	-3.6%	4563	4331	5.4%
ARSON TOTAL	29	0.6%	31	-6.5%	28	3.6%	202	249	-18.9%
TOTALS	4885	100.0%	4736	3.1%	4860	0.5%	35736	36285	-1.5%
VIOLENT PROPERTY	751	15.4%	743	1.1%	663	13.3%	5084	4884	4.1%
PROPERTY	4134	84.6%	3993	3.5%	4197	-1.5%	30652	31401	-2.4%

NOTE: Internal robbery breakdowns by armed and strong-arm in October, 2004, reflect the late reclassification of some cases from previous months from armed robbery to strong-arm robbery.

NOTE: These totals include offenses reported to the Charlotte-Mecklenburg Police Department in accordance with the Uniform Crime Reporting Program. Totals for homicide do not include cases investigated by the police but classed by UCR guidelines as negligent manslaughter or as "justifiable homicide."



**INDEX CLEARANCES REPORTED BY THE CHARLOTTE-MECKLENBURG POLICE DEPARTMENT**

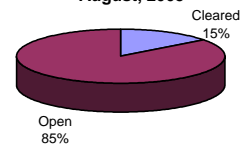
August, 2005 INDEX CLEARANCES	THIS MONTH:		LAST MONTH:		SAME MO. LAST YR:		THIS YEAR TO DATE:		LAST YEAR TO DATE:	
	NO.	%	NO.	%	NO.	%	NO.	%	NO.	%
MURDER & NON-NEGLIGENT MANSLAUGHTER	7	70.0%	1	8.3%	1	25.0%	24	40.7%	15	38.5%
RAPE TOTAL	26	130.0%	21	70.0%	30	96.8%	177	85.5%	136	60.4%
ACTUAL	0	0.0%	20	69.0%	30	103.4%	145	74.4%	126	60.3%
ATTEMPT	0	0.0%	1	100.0%	0	0.0%	16	133.3%	10	62.5%
ROBBERY TOTAL	65	19.5%	76	24.1%	55	21.7%	504	22.6%	445	25.9%
ARMED	50	17.1%	63	25.5%	45	21.3%	389	21.4%	335	25.0%
STRONG-ARM	15	36.6%	13	18.8%	10	23.3%	115	27.8%	110	28.8%
AGGRAVATED ASSAULT TOTAL	178	45.9%	222	57.7%	260	69.5%	1318	50.9%	1484	51.2%
BURGLARY TOTAL	232	21.6%	102	9.8%	56	5.2%	1058	13.1%	797	10.2%
RESIDENTIAL	100	14.0%	68	10.0%	41	5.3%	747	14.3%	651	11.9%
COMMERCIAL	132	36.8%	34	9.3%	15	5.0%	311	11.0%	146	6.2%
LARCENY TOTAL	332	13.7%	362	15.6%	195	7.9%	2639	14.8%	2424	12.8%
FROM AUTO	50	4.1%	36	3.1%	27	2.0%	357	4.0%	270	2.8%
BICYCLE	7	21.2%	5	15.6%	0	0.0%	25	15.8%	10	6.3%
SHOPLIFTING	153	67.7%	158	69.6%	132	53.9%	1172	67.8%	1191	60.2%
OTHERS	122	13.2%	163	17.9%	36	4.2%	1085	15.5%	953	13.5%
VEHICLE THEFT TOTAL	107	17.5%	103	17.2%	74	11.6%	760	16.7%	760	17.5%
ARSON TOTAL	7	24.1%	5	16.1%	5	17.9%	46	22.8%	64	25.7%
TOTALS	954	19.5%	892	18.8%	676	13.9%	6526	18.3%	6125	16.9%
VIOLENT PROPERTY	276	36.8%	320	43.1%	346	52.2%	2023	39.8%	2080	42.6%
	678	16.4%	572	14.3%	330	7.9%	4503	14.7%	4045	12.9%

NOTE: Clearances are reported in accordance with Uniform Crime Report guidelines. Since clearances are not counted until they are entered in the any delays in entry of the documentation may result in some clearances being reported in succeeding months.  
Clearances for six additional homicides from 1984 - 1989 are not included in the homicide clearance totals above for Jan-Aug, 2005; the homicide clearance rate with those included as calculated by UCR guidelines is 50.8%.

**Year-to-Date Violent Index Clearance Rate  
Charlotte-Mecklenburg Police Department: 2004  
August, 2005**

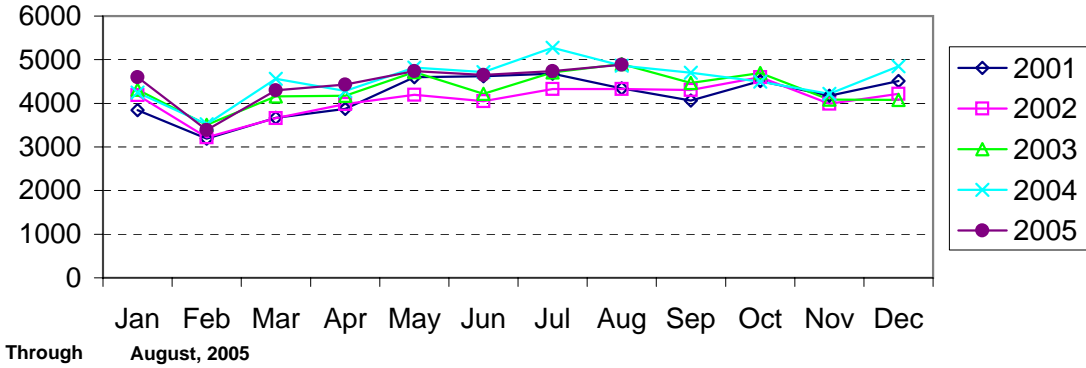


**Year-to-Date Property Index Clearance Rate  
Charlotte-Mecklenburg Police Department: 2004  
August, 2005**

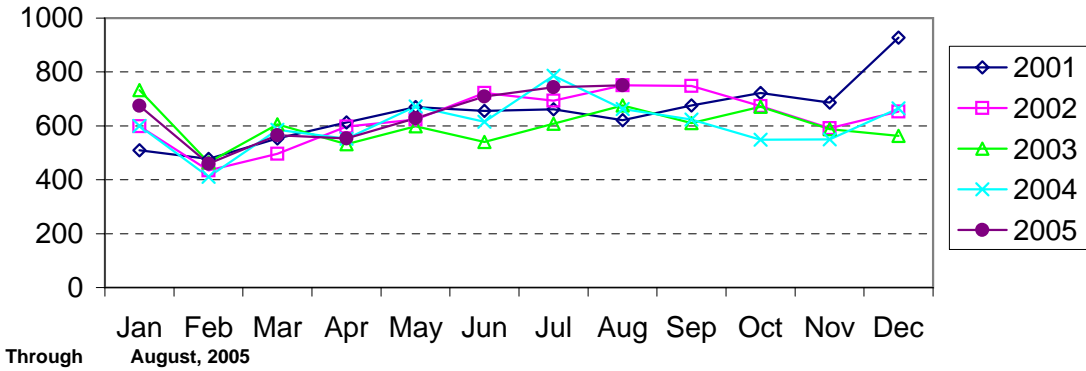


Clearance rates for crime reporting are calculated by dividing the number of crimes cleared during a designated time span by the number of crimes reported in the same period and converting the result to a percentage (multiplying by 100). Since cases from previous reporting periods can be cleared during the designated time span, the rate may be higher than 100%.

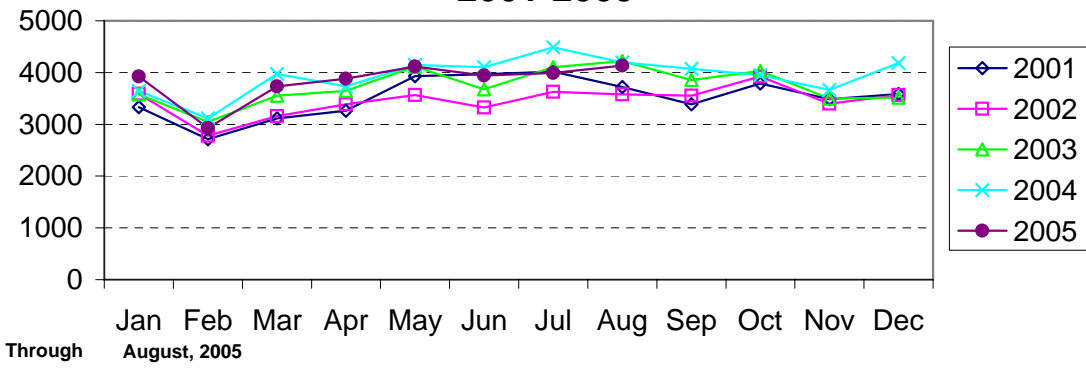
### Index Offenses Reported by Month Charlotte-Mecklenburg Police Department: 2001-2005



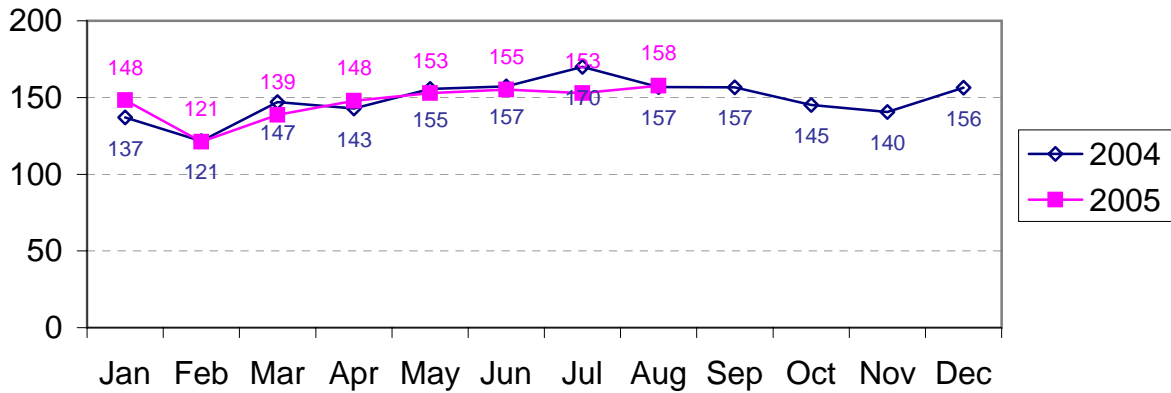
### Violent Index Offenses Reported by Month Charlotte-Mecklenburg Police Department: 2001-2005



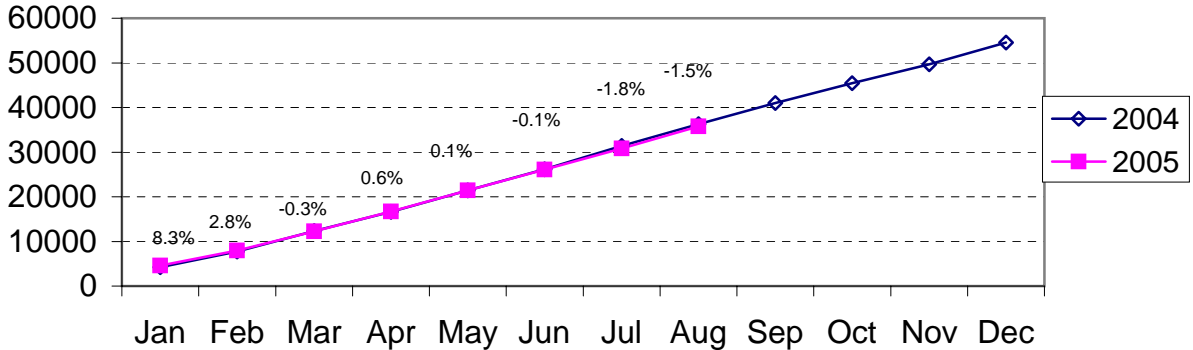
### Property Index Offenses Reported by Month Charlotte-Mecklenburg Police Department: 2001-2005



### Index Offense Per Day Average by Month Charlotte-Mecklenburg Police Department: 2004-2005

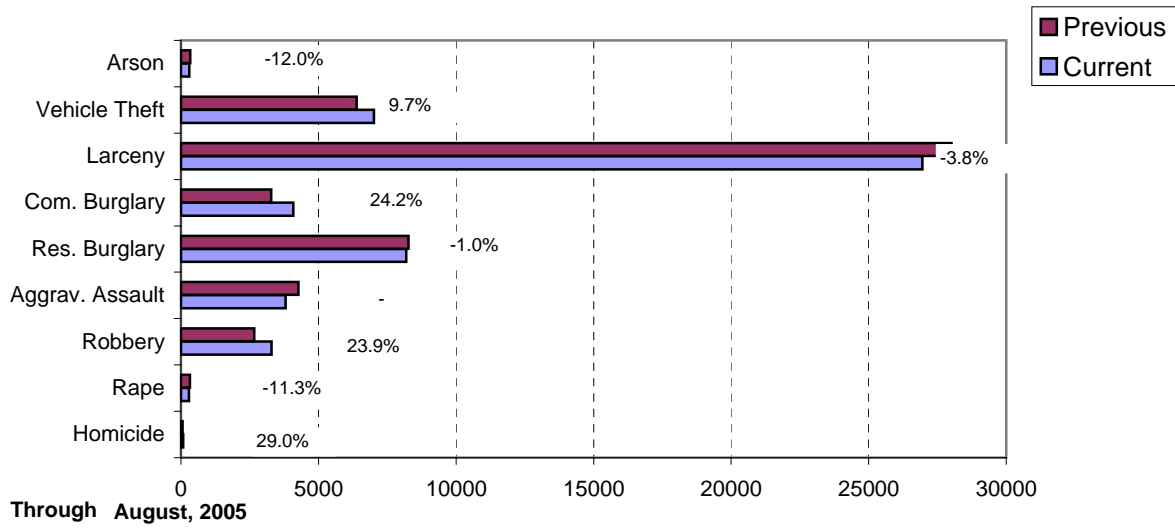


### Index Offenses Year-to-Date Cumulative Totals Charlotte-Mecklenburg Police Department: 2004-2005

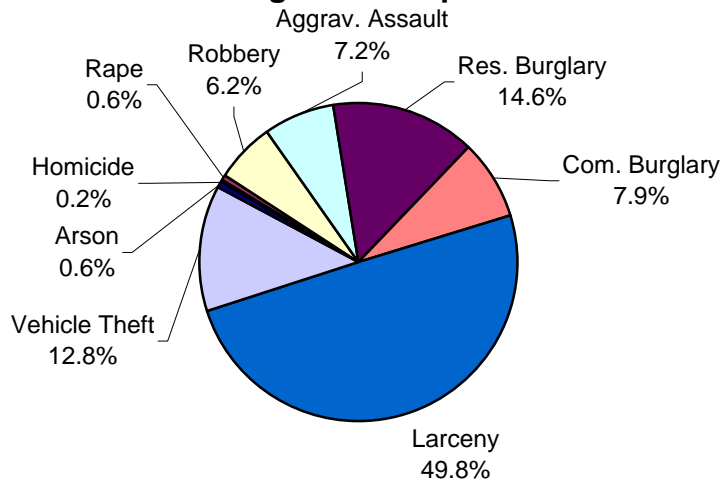


Through August, 2005

### Index Offenses in Current and Previous 12 Months Charlotte-Mecklenburg Police Department

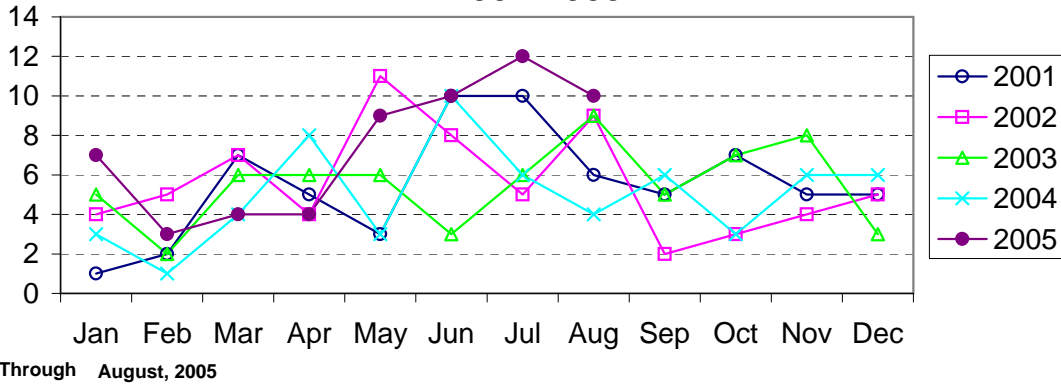


### Year-to-Date Index Offenses by Type Charlotte-Mecklenburg Police Department: 2005

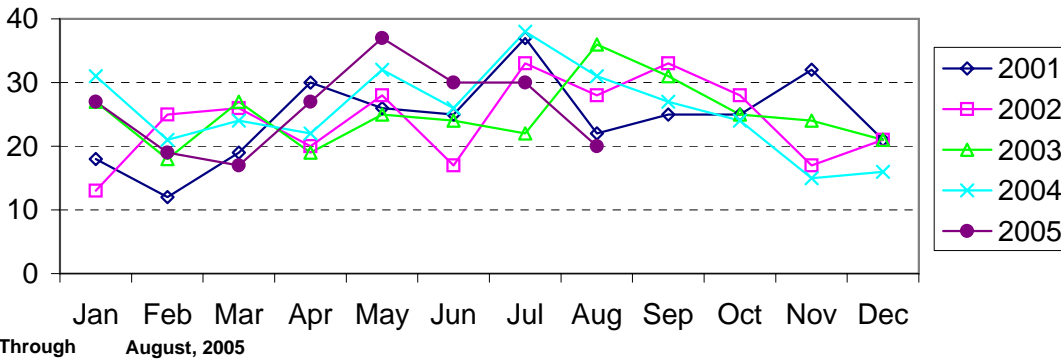


Through August, 2005

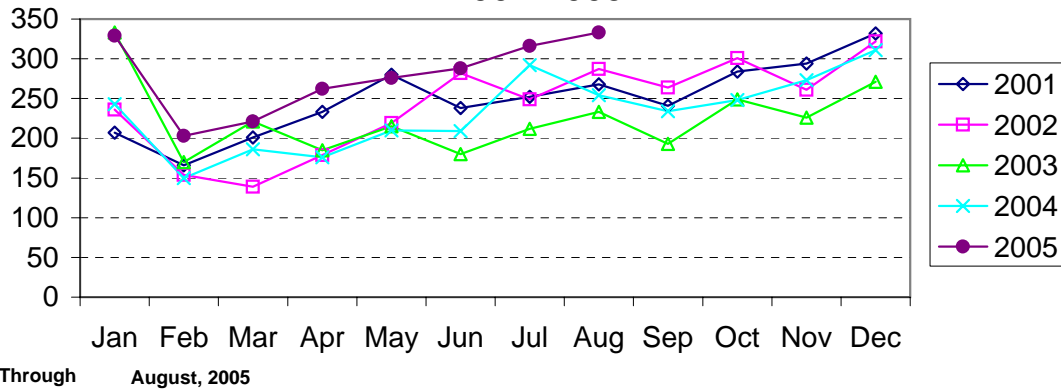
### Homicide Reported by Month Charlotte-Mecklenburg Police Department: 2001-2005



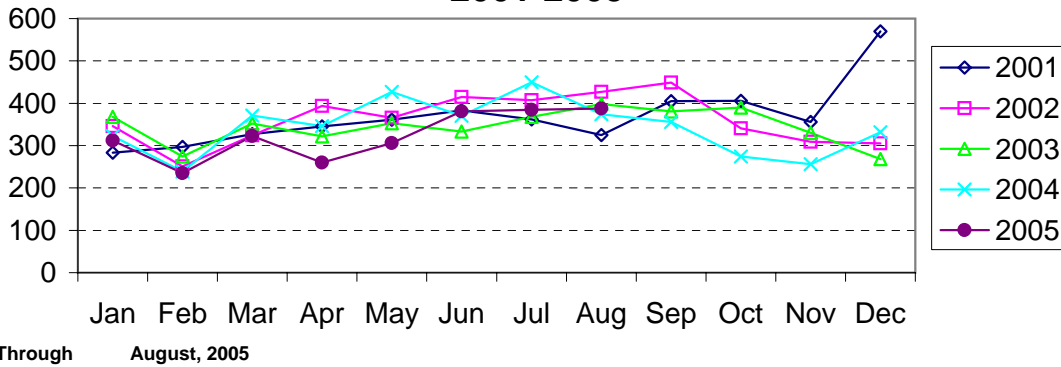
### Rape Reported by Month Charlotte-Mecklenburg Police Department: 2001-2005



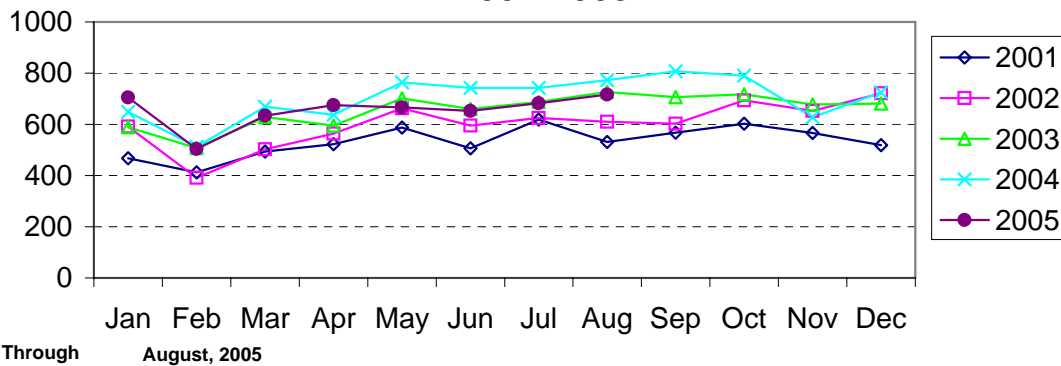
### Robbery Reported by Month Charlotte-Mecklenburg Police Department: 2001-2005



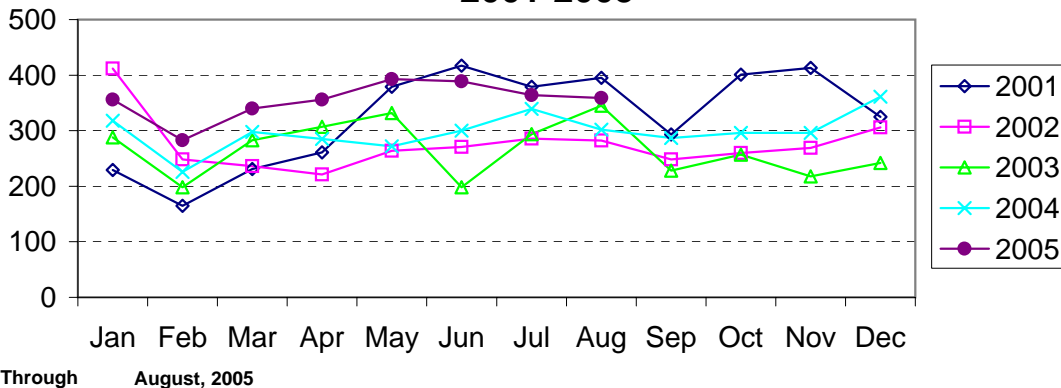
**Aggravated Assault Reported by Month  
Charlotte-Mecklenburg Police Department:  
2001-2005**



**Residential Burglary Reported by Month  
Charlotte-Mecklenburg Police Department:  
2001-2005**

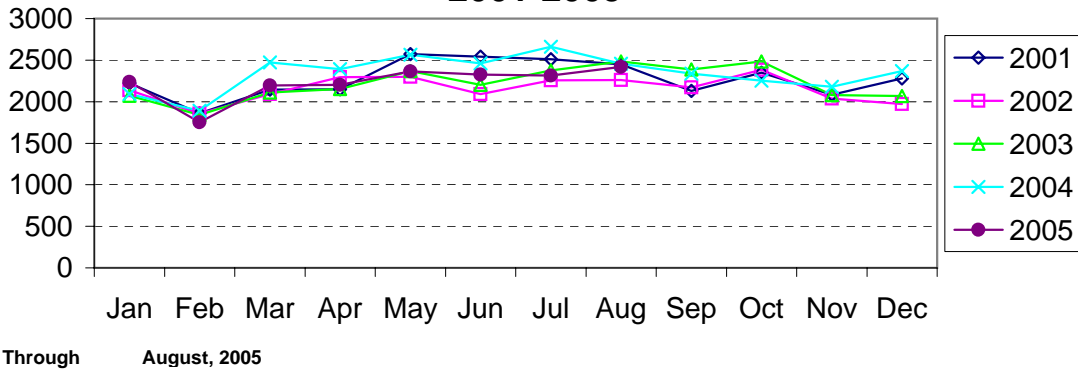


**Commercial Burglary Reported by Month  
Charlotte-Mecklenburg Police Department:  
2001-2005**

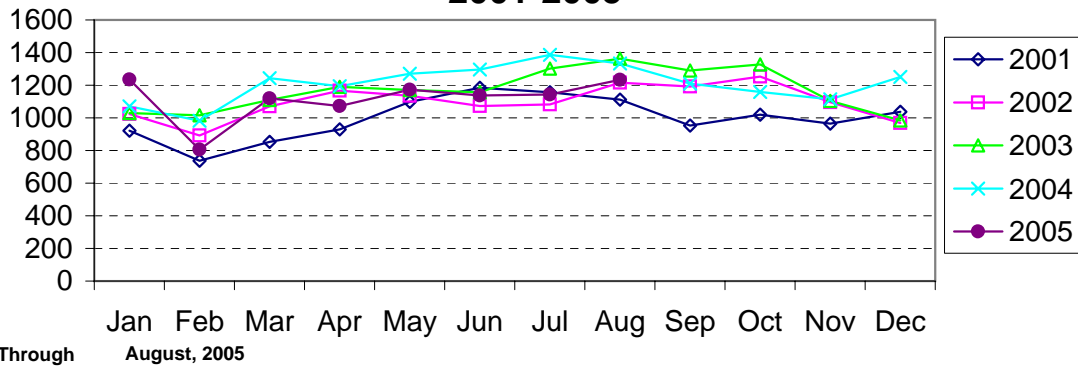




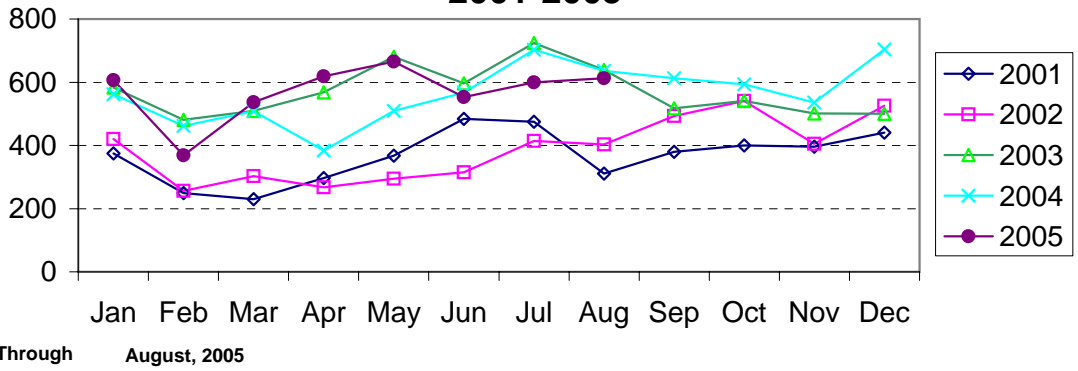
### Larceny Reported by Month Charlotte-Mecklenburg Police Department: 2001-2005



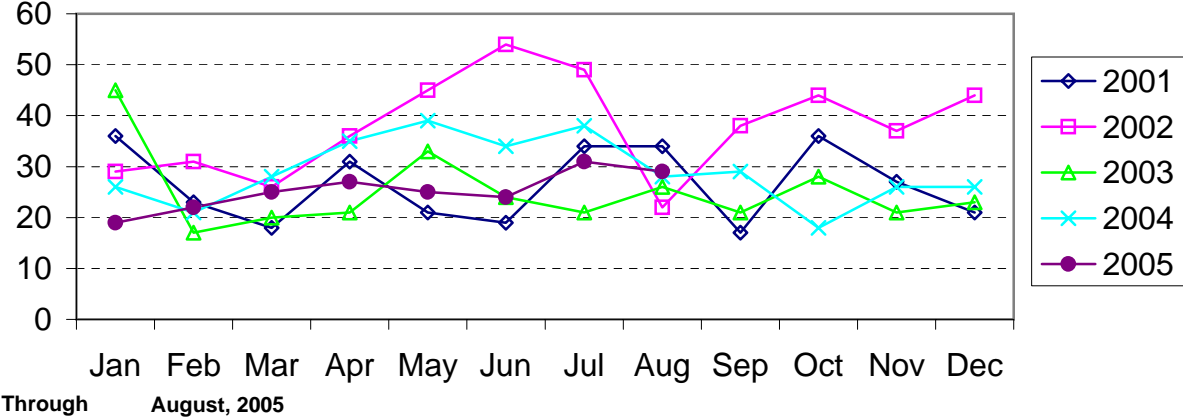
### Larceny from Vehicle Reported by Month Charlotte-Mecklenburg Police Department: 2001-2005



### Vehicle Theft Reported by Month Charlotte-Mecklenburg Police Department: 2001-2005



### Arson Reported by Month Charlotte-Mecklenburg Police Department: 2001-2005



Index Offenses Reported by Division and Service Area of Occurrence									
West Service Area: Jan-Aug, 2004-2005									
INDEX_CATEGORIES	Westover (A2)			Freedom (A3)			West Service Area		
	2004	2005	% Change	2004	2005	% Change	2004	2005	% Change
MURDER & NON-NEGLIGENT MANSLAUGHTER	1	3	200.0%	4	9	125.0%	5	12	140.0%
RAPE	18	17	-5.6%	20	21	5.0%	38	38	0.0%
ACTUAL	18	16	-11.1%	20	19	-5.0%	38	35	-7.9%
ATTEMPTED	0	1	NA	0	2	NA	0	3	NA
ROBBERY	129	189	46.5%	187	300	60.4%	316	489	54.7%
ARMED	99	151	52.5%	142	266	87.3%	241	417	73.0%
STRONG-ARM	30	38	26.7%	45	34	-24.4%	75	72	-4.0%
AGGRAVATED ASSAULT	253	323	27.7%	327	330	0.9%	580	653	12.6%
BURGLARY	582	659	13.2%	1097	1064	-3.0%	1679	1723	2.6%
RESIDENTIAL	396	368	-7.1%	764	645	-15.6%	1160	1013	-12.7%
COMMERCIAL	186	291	56.5%	333	419	25.8%	519	710	36.8%
LARCENY	1155	1187	2.8%	1807	1615	-10.6%	2962	2802	-5.4%
FROM AUTO	584	570	-2.4%	863	724	-16.1%	1447	1294	-10.6%
BICYCLE	10	5	-50.0%	7	11	57.1%	17	16	-5.9%
SHOPLIFTING	95	92	-3.2%	184	142	-22.8%	279	234	-16.1%
OTHERS	466	520	11.6%	753	738	-2.0%	1219	1258	3.2%
VEHICLE THEFT	286	351	22.7%	465	450	-3.2%	751	801	6.7%
ARSON	20	16	-20.0%	26	26	0.0%	46	42	-8.7%
TOTALS	2444	2745	12.3%	3933	3815	-3.0%	6377	6560	2.9%
VIOLENT	401	532	32.7%	538	660	22.7%	939	1192	26.9%
PROPERTY	2043	2213	8.3%	3395	3155	-7.1%	5438	5368	-1.3%

Index Offenses Reported by Division and Service Area of Occurrence									
Southeast Service Area: Jan-Aug, 2004-2005									
INDEX_CATEGORIES	Providence (B1)			Independence (B3)			Southeast Service Area		
	2004	2005	% Change	2004	2005	% Change	2004	2005	% Change
MURDER & NON-NEGLIGENT MANSLAUGHTER	2	3	50.0%	2	3	50.0%	4	6	50.0%
RAPE	11	12	9.1%	14	19	35.7%	25	31	24.0%
ACTUAL	11	12	9.1%	13	17	30.8%	24	29	20.8%
ATTEMPTED	0	0	NA	1	2	100.0%	1	2	100.0%
ROBBERY	89	82	-7.9%	142	183	28.9%	231	265	14.7%
ARMED	68	61	-10.3%	115	154	33.9%	183	215	17.5%
STRONG-ARM	21	21	0.0%	27	29	7.4%	48	50	4.2%
AGGRAVATED ASSAULT	118	86	-27.1%	229	201	-12.2%	347	287	-17.3%
BURGLARY	559	635	13.6%	683	631	-7.6%	1242	1266	1.9%
RESIDENTIAL	326	431	32.2%	530	489	-7.7%	856	920	7.5%
COMMERCIAL	233	204	-12.4%	153	142	-7.2%	386	346	-10.4%
LARCENY	1293	1293	0.0%	1487	1566	5.3%	2780	2859	2.8%
FROM AUTO	582	562	-3.4%	837	847	1.2%	1419	1409	-0.7%
BICYCLE	13	14	7.7%	13	13	0.0%	26	27	3.8%
SHOPLIFTING	130	161	23.8%	115	170	47.8%	245	331	35.1%
OTHERS	568	556	-2.1%	522	536	2.7%	1090	1092	0.2%
VEHICLE THEFT	225	212	-5.8%	437	500	14.4%	662	712	7.6%
ARSON	10	7	-30.0%	23	21	-8.7%	33	28	-15.2%
TOTALS	2307	2330	1.0%	3017	3124	3.5%	5324	5454	2.4%
VIOLENT	220	183	-16.8%	387	406	4.9%	607	589	-3.0%
PROPERTY	2087	2147	2.9%	2630	2718	3.3%	4717	4865	3.1%

The data in the district breakdowns does not include a small number of offenses in which the offense location (or reporting location if offense location was unknown) were entered without one of the 12 valid division assignments. Districts are not equal in geographic size, demographics, zoning/development, and other factors that influence the rate of crimes committed in an area. Therefore, the comparison of raw offense totals across districts is **not** advisable.

Index Offenses Reported by Division and Service Area of Occurrence									
Northeast Service Area: Jan-Aug, 2004-2005									
INDEX_CATEGORIES	North (C1)			Hickory Grove (C3)			Northeast Service Area		
	2004	2005	% Change	2004	2005	% Change	2004	2005	% Change
MURDER & NON-NEGLIGENT MANSLAUGHTER	4	10	150.0%	2	7	250.0%	6	17	183.3%
RAPE	31	26	-16.1%	26	23	-11.5%	57	49	-14.0%
ACTUAL	29	24	-17.2%	23	20	-13.0%	52	44	-15.4%
ATTEMPTED	2	2	0.0%	3	3	0.0%	5	5	0.0%
ROBBERY	156	166	6.4%	152	198	30.3%	308	364	18.2%
ARMED	125	143	14.4%	125	159	27.2%	250	302	20.8%
STRONG-ARM	31	23	-25.8%	27	39	44.4%	58	62	6.9%
AGGRAVATED ASSAULT	243	229	-5.8%	311	267	-14.1%	554	496	-10.5%
BURGLARY	1058	994	-6.0%	795	1026	29.1%	1853	2020	9.0%
RESIDENTIAL	750	657	-12.4%	632	636	0.6%	1382	1293	-6.4%
COMMERCIAL*	308	337	9.4%	163	390	139.3%	471	727	54.4%
LARCENY	2863	2903	1.4%	1454	1375	-5.4%	4317	4278	-0.9%
FROM AUTO	1632	1575	-3.5%	732	728	-0.5%	2364	2303	-2.6%
BICYCLE	16	22	37.5%	28	23	-17.9%	44	45	2.3%
SHOPLIFTING	241	270	12.0%	109	125	14.7%	350	395	12.9%
OTHERS	974	1036	6.4%	585	499	-14.7%	1559	1535	-1.5%
VEHICLE THEFT	577	624	8.1%	466	498	6.9%	1043	1122	7.6%
ARSON	33	32	-3.0%	35	23	-34.3%	68	55	-19.1%
TOTALS	4965	4984	0.4%	3241	3417	5.4%	8206	8401	2.4%
VIOLENT	434	431	-0.7%	491	495	0.8%	925	926	0.1%
PROPERTY	4531	4553	0.5%	2750	2922	6.3%	7281	7475	2.7%

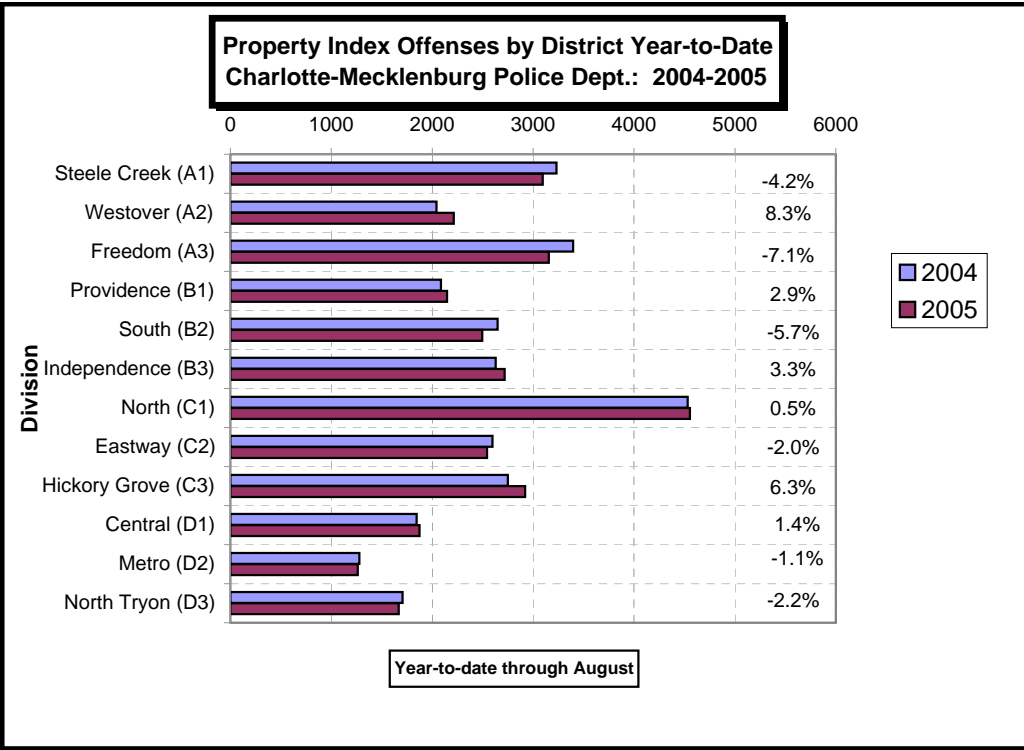
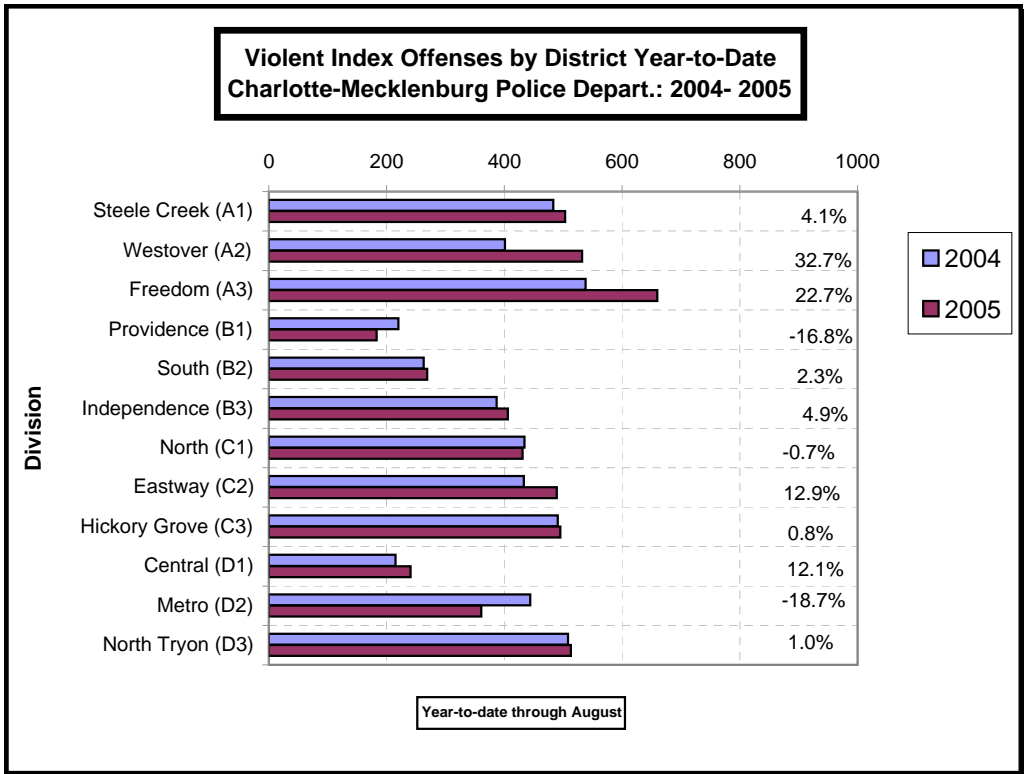
Index Offenses Reported by Division and Service Area of Occurrence									
Central Service Area: Jan-Aug, 2004-2005									
INDEX_CATEGORIES	Central (D1)			Metro (D2)			Central Service Area		
	2004	2005	% Change	2004	2005	% Change	2004	2005	% Change
MURDER & NON-NEGLIGENT MANSLAUGHTER	1	4	300.0%	7	7	0.0%	8	11	37.5%
RAPE	15	24	60.0%	18	7	-61.1%	33	31	-6.1%
ACTUAL	13	23	76.9%	17	8	-52.9%	30	31	3.3%
ATTEMPTED	2	1	-50.0%	1	-1	-200.0%	3	0	-100.0%
ROBBERY	83	121	45.8%	141	140	-0.7%	224	261	16.5%
ARMED	48	73	52.1%	116	109	-6.0%	164	182	11.0%
STRONG-ARM	35	48	37.1%	25	31	24.0%	60	79	31.7%
AGGRAVATED ASSAULT	116	92	-20.7%	278	207	-25.5%	394	299	-24.1%
BURGLARY	251	254	1.2%	408	404	-1.0%	659	658	-0.2%
RESIDENTIAL	101	94	-6.9%	296	316	6.8%	397	410	3.3%
COMMERCIAL	150	160	6.7%	112	88	-21.4%	262	248	-5.3%
LARCENY	1391	1381	-0.7%	639	608	-4.9%	2030	1989	-2.0%
FROM AUTO	757	739	-2.4%	284	274	-3.5%	1041	1013	-2.7%
BICYCLE	13	21	61.5%	5	10	100.0%	18	31	72.2%
SHOPLIFTING	46	40	-13.0%	48	22	-54.2%	94	62	-34.0%
OTHERS	575	581	1.0%	302	302	0.0%	877	883	0.7%
VEHICLE THEFT	202	238	17.8%	219	236	7.8%	421	474	12.6%
ARSON	3	0	-100.0%	11	15	36.4%	14	15	7.1%
TOTALS	2062	2114	2.5%	1721	1624	-5.6%	3783	3738	-1.2%
VIOLENT	215	241	12.1%	444	361	-18.7%	659	602	-8.6%
PROPERTY	1847	1873	1.4%	1277	1263	-1.1%	3124	3136	0.4%

\*The Commercial Burglary total in the Hickory Grove Division in 2005 includes incidents at mini-storage businesses where 50 and 65 units were entered or attempted; UCR requires counting each unit as a burglary. Districts are not equal in geographic size, demographics, zoning/development, and other factors that influence the rate of crimes committed in an area. Therefore, the comparison of raw offense totals across districts is not advisable.

Index Offenses Reported by Division and Service Area of Occurrence									
East Service Area: Jan-Aug, 2004-2005									
INDEX_CATEGORIES	Eastway (C2)			North Tryon (D3)			East Service Area		
	2004	2005	% Change	2004	2005	% Change	2004	2005	% Change
MURDER & NON-NEGLIGENT MANSLAUGHTER	5	5	0.0%	6	4	-33.3%	11	9	-18.2%
RAPE	13	17	30.8%	14	8	-42.9%	27	25	-7.4%
ACTUAL	10	16	60.0%	13	7	-46.2%	23	23	0.0%
ATTEMPTED	3	1	-66.7%	1	1	0.0%	4	2	-50.0%
ROBBERY	189	279	47.6%	185	222	20.0%	374	501	34.0%
ARMED	144	220	52.8%	142	179	26.1%	286	399	39.5%
STRONG-ARM	45	59	31.1%	43	43	0.0%	88	102	15.9%
AGGRAVATED ASSAULT	226	188	-16.8%	303	279	-7.9%	529	467	-11.7%
BURGLARY	627	704	12.3%	481	547	13.7%	1108	1251	12.9%
RESIDENTIAL	448	520	16.1%	329	323	-1.8%	777	843	8.5%
COMMERCIAL	179	184	2.8%	152	227	49.3%	331	411	24.2%
LARCENY	1577	1460	-7.4%	911	841	-7.7%	2488	2301	-7.5%
FROM AUTO	567	551	-2.8%	441	413	-6.3%	1008	964	-4.4%
BICYCLE	19	16	-15.8%	8	5	-37.5%	27	21	-22.2%
SHOPLIFTING	532	358	-32.7%	76	47	-38.2%	608	405	-33.4%
OTHERS	459	535	16.6%	386	376	-2.6%	845	911	7.8%
VEHICLE THEFT	368	366	-0.5%	307	273	-11.1%	675	639	-5.3%
ARSON	24	14	-41.7%	8	8	0.0%	32	22	-31.3%
TOTALS	3029	3033	0.1%	2215	2182	-1.5%	5244	5215	-0.6%
VIOLENT PROPERTY	433 2596	489 2544	12.9% -2.0%	508 1707	513 1669	1.0% -2.2%	941 4303	1002 4213	6.5% -2.1%

Index Offenses Reported by Division and Service Area of Occurrence									
South Service Area: Jan-Aug, 2004-2005									
INDEX_CATEGORIES	Steele Creek (A1)			South (B2)			South Service Area		
	2004	2005	% Change	2004	2005	% Change	2004	2005	% Change
MURDER & NON-NEGLIGENT MANSLAUGHTER	4	4	0.0%	1	0	-100.0%	5	4	-20.0%
RAPE	19	22	15.8%	16	10	-37.5%	35	32	-8.6%
ACTUAL	17	22	29.4%	15	10	-33.3%	32	32	0.0%
ATTEMPTED	2	0	-100.0%	1	0	-100.0%	3	0	-100.0%
ROBBERY	154	210	36.4%	91	138	51.6%	245	348	42.0%
ARMED	124	179	44.4%	72	120	66.7%	196	299	52.6%
STRONG-ARM	30	31	3.3%	19	18	-5.3%	49	49	0.0%
AGGRAVATED ASSAULT	306	267	-12.7%	155	121	-21.9%	461	388	-15.8%
BURGLARY	582	593	1.9%	560	562	0.4%	1142	1155	1.1%
RESIDENTIAL	408	361	-11.5%	432	396	-8.3%	840	757	-9.9%
COMMERCIAL	174	232	33.3%	128	166	29.7%	302	398	31.8%
LARCENY	2227	1983	-11.0%	1775	1600	-9.9%	4002	3583	-10.5%
FROM AUTO	1272	1054	-17.1%	1011	882	-12.8%	2283	1936	-15.2%
BICYCLE	16	11	-31.3%	12	7	-41.7%	28	18	-35.7%
SHOPLIFTING	283	178	-37.1%	103	124	20.4%	386	302	-21.8%
OTHERS	656	740	12.8%	649	587	-9.6%	1305	1327	1.7%
VEHICLE THEFT	394	498	26.4%	288	314	9.0%	682	812	19.1%
ARSON	29	21	-27.6%	24	19	-20.8%	53	40	-24.5%
TOTALS	3715	3598	-3.1%	2910	2764	-5.0%	6625	6362	-4.0%
VIOLENT PROPERTY	483 3232	503 3095	4.1% -4.2%	263 2647	269 2495	2.3% -5.7%	746 5879	772 5590	3.5% -4.9%

The data in the district breakdowns does not include a small number of offenses in which the offense location (or reporting location if offense location was unknown) were entered without one of the 12 valid division assignments. Districts are not equal in geographic size, demographics, zoning/development, and other factors that influence the rate of crimes committed in an area. Therefore, the comparison of raw offense totals across districts is **not** advisable.



The data in the district breakdowns does not include a small number of offenses in which the offense location (or reporting location if offense location was unknown) were entered without one of the 12 valid division assignments. Districts are not equal in geographic size, demographics, zoning/development, and other factors that influence the rate of crimes committed in an area. Therefore, the comparison of raw offense totals across districts is **not** advisable.

**Arrests by Charlotte-Mecklenburg Police Department**  
**Year-To-Date: 2004-2005**  
**(Through August)**

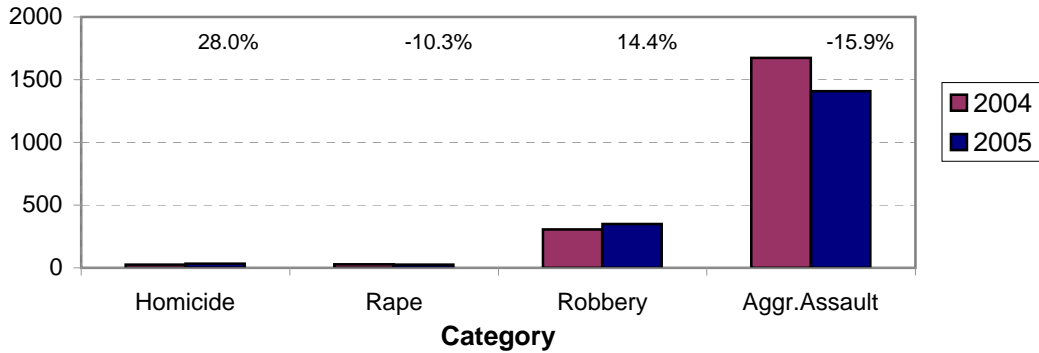
CATEGORY	ADULTS (AGE 18 & OLDER):			JUVENILES ( UNDER 18):			TOTAL ARRESTS:		
	2004 Y-T-D	2005 Y-T-D	% CHANGE	2004 Y-T-D	2005 Y-T-D	% CHANGE	2004 Y-T-D	2005 Y-T-D	% CHANGE
Murder/Non-Negligent Manslaughter	25	30	20.0%	0	2	NA	25	32	28.0%
Negligent & Vehicular Manslaughter	4	3	-25.0%	0	0	NA	4	3	-25.0%
Rape	27	25	-7.4%	2	1	-50.0%	29	26	-10.3%
Robbery	205	278	35.6%	100	71	-29.0%	305	349	14.4%
Aggravated Assault	1455	1225	-15.8%	219	183	-16.4%	1674	1408	-15.9%
Burglary	382	421	10.2%	151	157	4.0%	533	578	8.4%
Larceny	1065	1040	-2.3%	415	351	-15.4%	1480	1391	-6.0%
Vehicle Theft	52	65	25.0%	108	78	-27.8%	160	143	-10.6%
Non-Aggravated Assault	1244	1349	8.4%	527	511	-3.0%	1771	1860	5.0%
Arson	13	7	-46.2%	23	24	4.3%	36	31	-13.9%
Forgery/Counterfiet	92	88	-4.3%	2	2	0.0%	94	90	-4.3%
Fraud	366	388	6.0%	7	4	-42.9%	373	392	5.1%
Embezzlement	65	53	-18.5%	11	7	-36.4%	76	60	-21.1%
Stolen Property	349	329	-5.7%	67	90	34.3%	416	419	0.7%
Vandalism	153	142	-7.2%	137	159	16.1%	290	301	3.8%
Weapons	296	408	37.8%	42	46	9.5%	338	454	34.3%
Prostitution	226	194	-14.2%	8	2	-75.0%	234	196	-16.2%
Sex Offenses	133	116	-12.8%	13	19	46.2%	146	135	-7.5%
Drugs	1843	1828	-0.8%	165	179	8.5%	2008	2007	0.0%
Gambling	12	2	-83.3%	0	0	NA	12	2	-83.3%
Offenses vs. Family	3	4	33.3%	1	0	-100.0%	4	4	0.0%
DUI	1308	1374	5.0%	7	5	-28.6%	1315	1379	4.9%
Liquor	145	133	-8.3%	6	5	-16.7%	151	138	-8.6%
Disorder.Conduct	381	340	-10.8%	200	200	0.0%	581	540	-7.1%
Other Non-Traffic	5346	5417	1.3%	513	534	4.1%	5859	5951	1.6%
<b>VIOLENT INDEX<sup>1</sup></b>	1712	1558	-9.0%	321	257	-19.9%	2033	1815	-10.7%
<b>PROPERTY INDEX<sup>2</sup></b>	1512	1533	1.4%	697	610	-12.5%	2209	2143	-3.0%
<b>INDEX SUBTOTAL</b>	3224	3091	-4.1%	1018	867	-14.8%	4242	3958	-6.7%
<b>PART 2 SUBTOTAL<sup>3</sup></b>	11966	12168	1.7%	1706	1763	3.3%	13672	13931	1.9%
<b>TOTAL</b>	15190	15259	0.5%	2724	2630	-3.5%	17914	17889	-0.1%

<sup>1</sup>Violent Index includes murder and non-negligent manslaughter, rape, robbery, and aggravated assault.

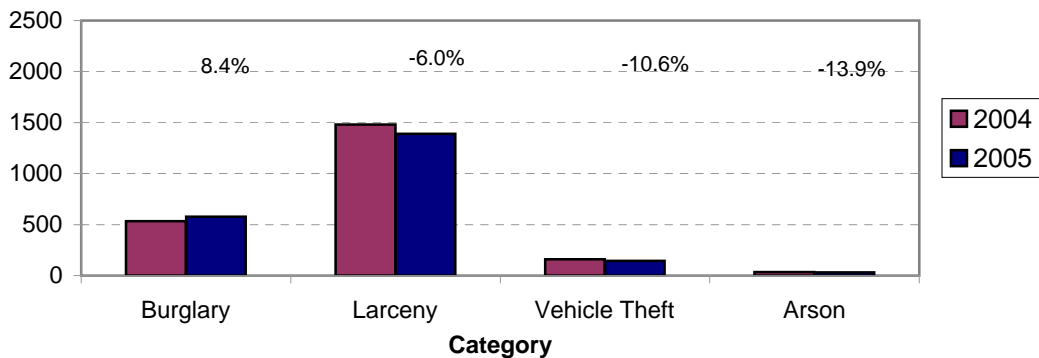
<sup>2</sup>Property Index includes burglary, larceny, vehicle theft, and arson.

<sup>3</sup>Part 2 crimes include crime categories not counted in the Index totals.

**Violent Index Arrests Year-to-Date  
Charlotte-Mecklenburg Police Department: 2004-2005  
(Through August)**

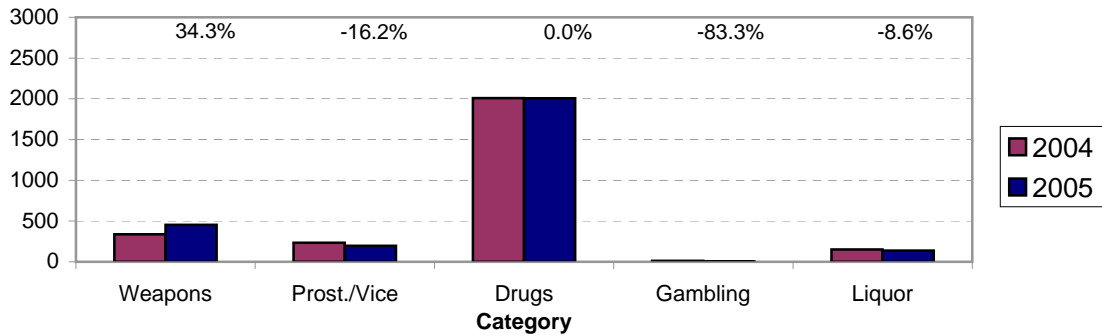


**Property Index Arrests Year-to-Date  
Charlotte-Mecklenburg Police Department: 2004-2005  
(Through August)**

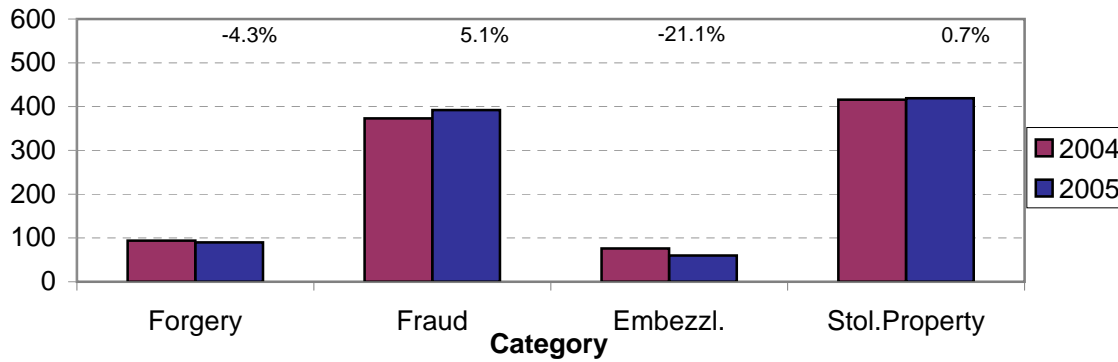




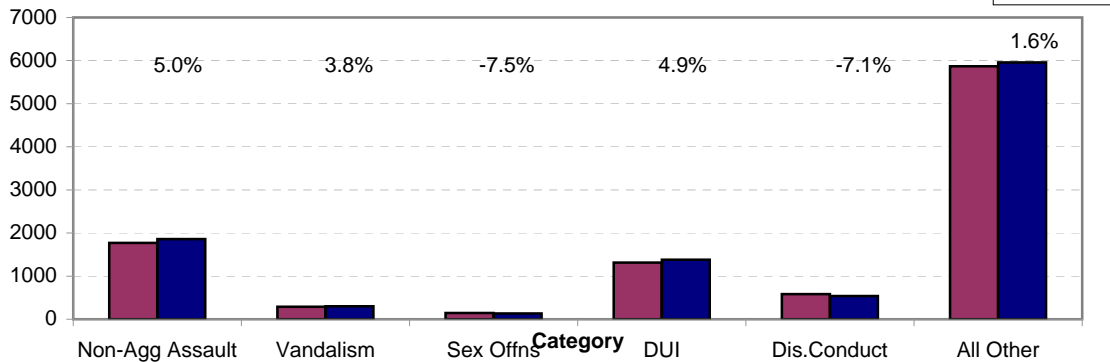
**Arrests for Vice/CCW/Drugs/Etc. Year-to-Date  
Charlotte-Mecklenburg Police Department: 2004 - 2005  
(Through August)**



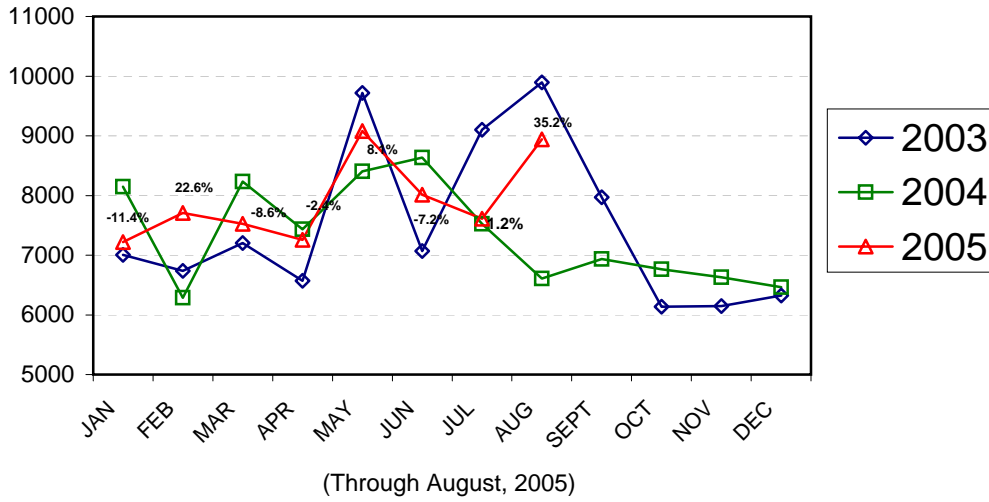
**Arrests for Property/White Collar Crime Year-to-Date  
Charlotte-Mecklenburg Police Department: 2004- 2005  
(Through August)**



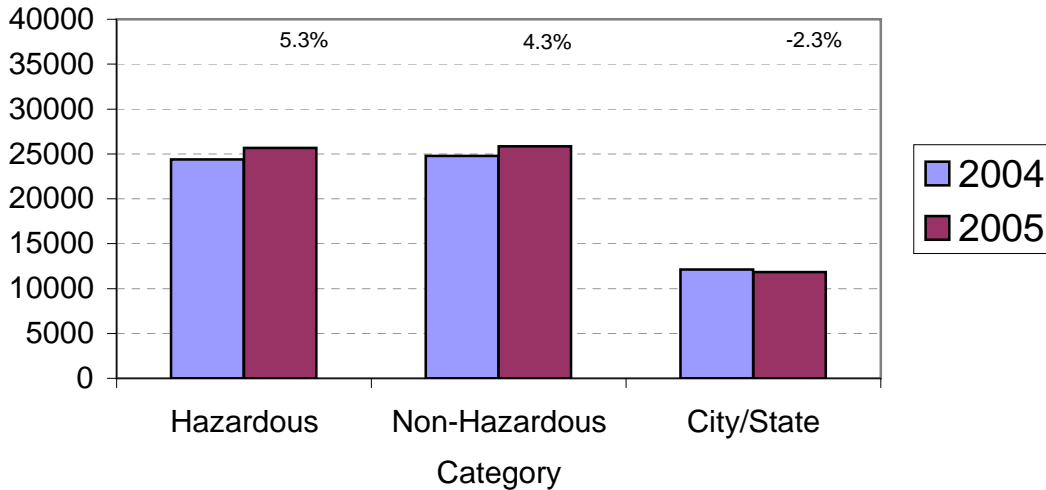
**Arrests for Other Categories Year-to-Date  
Charlotte-Mecklenburg Police Department: 2004 - 2005  
(Through August)**



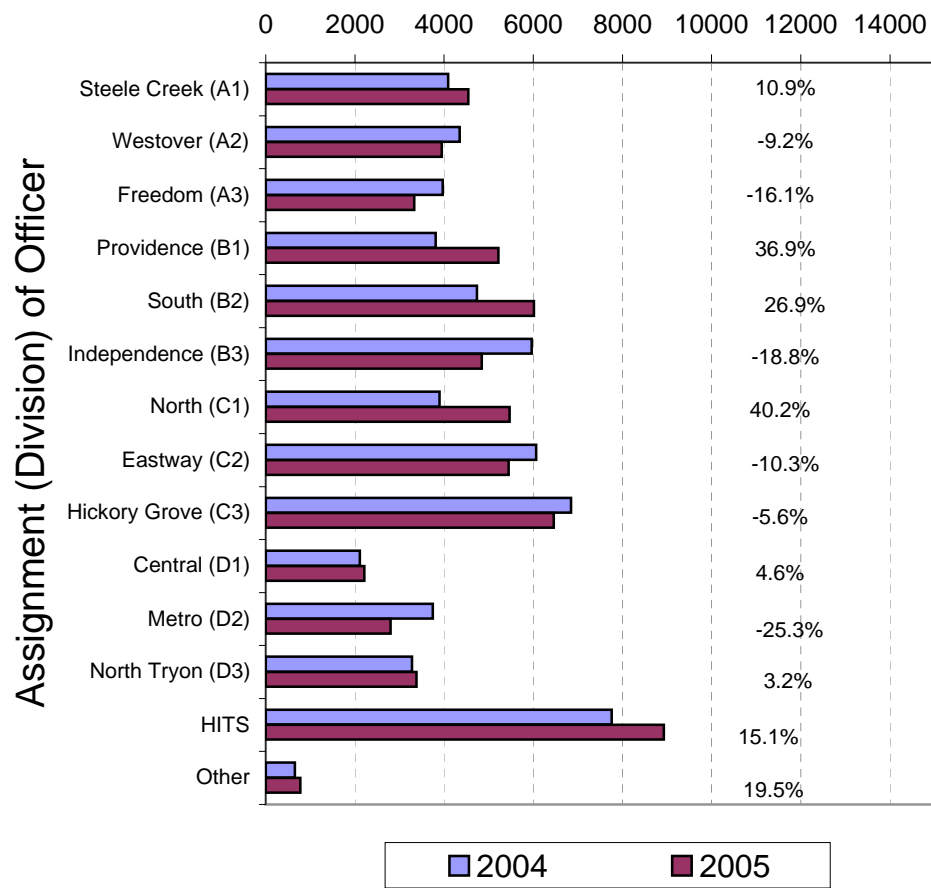
**Total Citation Enforcement by Month  
Charlotte-Mecklenburg Police Dept.: 2003-2005**



**CMPD Citation Enforcement by Category  
Year-to-Date, 2004 - 2005  
(Through August, 2005)**



**Citations Issued Year-to-Date by CMPD Divisions  
2004 - 2005  
(Through August, 2005)**

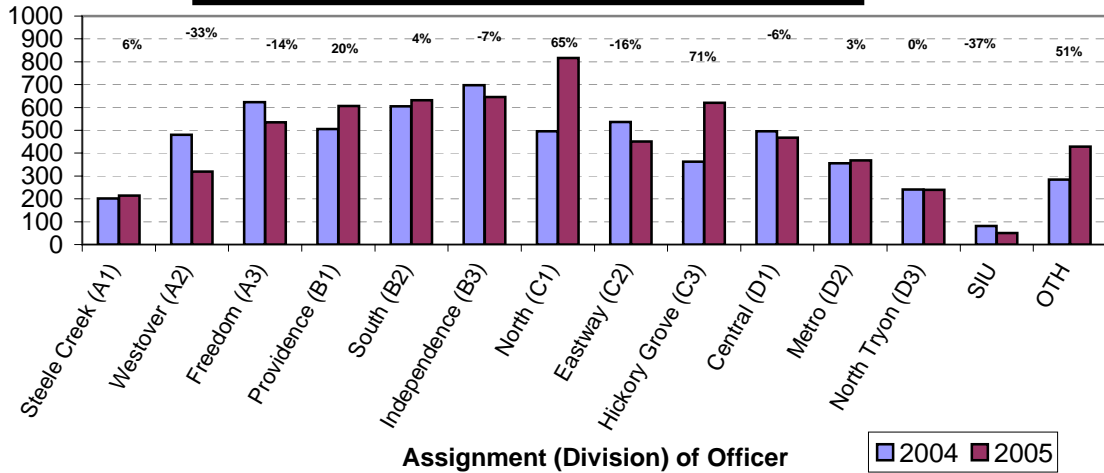


Note: 2003 and 2004 data for HITS and Other was adjusted in April, 2004.

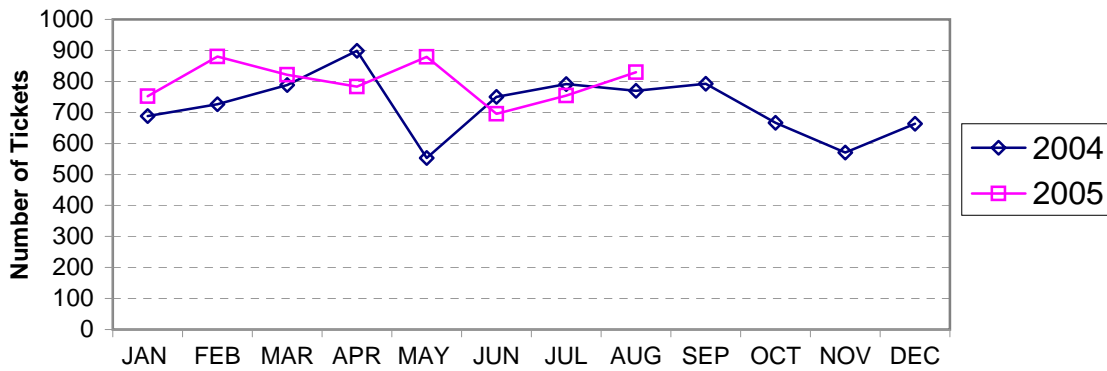
<b>Citations Issued by the Charlotte Mecklenburg Police Officers Year-to-Date (Through August, 2005)</b>			
<b>Total Citations</b>	<b>2004</b>	<b>2005</b>	<b>% Change</b>
Hazardous	24,394	25,678	5.3%
Non-Hazardous	24,774	25,849	4.3%
Other City/State Statute/Ordinance	12,105	11,825	-2.3%
<b>Total</b>	<b>61,273</b>	<b>63,352</b>	<b>3.4%</b>

<b>"Safe Speed" Program: 2005 (Through August, 2005)</b>	
Total Citations	24310
(Citations issued through the "Safe Speed" program are not included in the CMPD citation totals used in the summary chart above or in the other citation charts.)	

**Warning Tickets Issued by CMPD Division  
Year-to-Date, 2004 - 2005  
Through August, 2005**



**Total Warning Tickets Issued by CMPD  
By Month: 2004 - 2005**



**Warning Tickets Issued by CMPD Year-to-Date  
Through August, 2005**

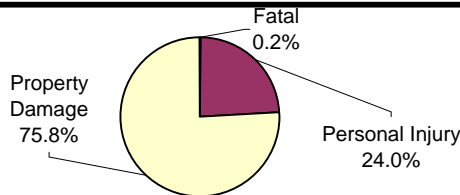
	2004	2005	% Change
Total Warning Tickets	5967	6395	7.2%

**Traffic Collision Reports  
Charlotte-Mecklenburg Police Department  
Year-to-Date: 2004-2005  
(Through August)**

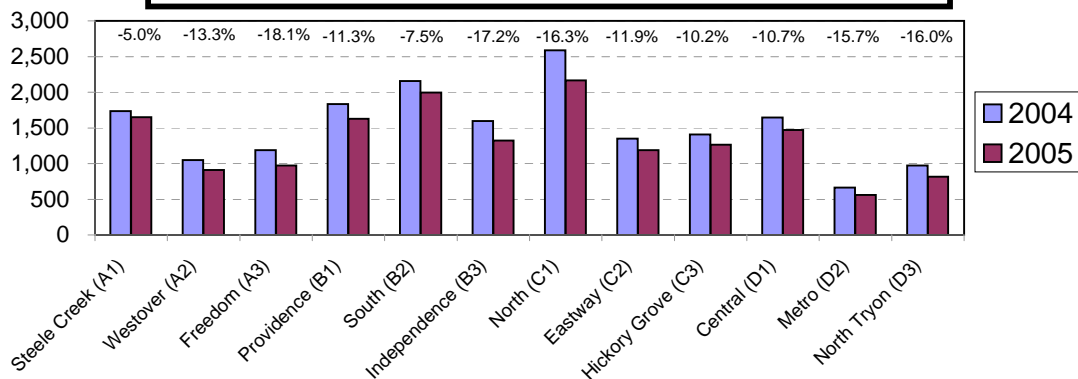
Type	2004	2005	% Change
Fatal Collisions	26	32	23.1%
Vehicle Occupants Killed	23	29	26.1%
Pedestrians Killed	4	4	0.0%
Personal Injury Collisions	4523	3815	-15.4%
Property Damage Collisions	13683	12130	-11.3%
Total Collisions	18232	15977	-12.4%

\* The number of fatal collisions and the number of persons killed (fatalities) in those incidents is taken from the HITS file. Their records are updated for deaths that occur after the initial report is filed.

**Traffic Collisions Reported by Type  
Charlotte-Mecklenburg Police Department:  
2005 Year-to-Date  
(Through August)**



**Traffic Collisions Reported by Charlotte-Mecklenburg Police Dept.  
Year-to-Date By Location (Division) : 2004 -2005  
(Through August)**



Uniform Crime Reporting Procedures:

The Charlotte-Mecklenburg Police Department reports offense and arrest statistics in accordance with standard Uniform Crime Reporting (UCR) guidelines. UCR policy states that any adjustments to previous months can be made on the current month's report:

...In tabulating crime counts, an agency may find that offense totals for past months require adjustments due to developments in the investigation or other handling of the matter. It may be necessary to adjust totals reported to UCR for the past month or prior months. Needed adjustments can be made on the current month's report and do not affect the reliability of the figures in that such adjustments tend to equalize each other from month to month over a period of time.

- *Uniform Crime Reporting Handbook*, FBI, 1984, p. 42-43

We are required to report crime monthly to the UCR program, and we do therefore make an effort to process monthly changes in a timely manner. However, occasionally due to the review and processing required for reclassifying, unfounding or clearing cases, the current month's totals may reflect the processing of a backlog of these changes from previous months.

Users of the data are cautioned that conclusions about substantial changes in crime trends or in clearance rates based on only a single month's data or trend may reflect some of these adjustments. For this reason, in addition to the monthly and year-to-date trends on Page 1, the monthly report routinely includes a comparison for the previous 12 months (p. 4), as well as graphs that provide seasonal/monthly comparisons over a five-year period (p. 5-8).

This report was compiled by the Research, Planning, and Analysis Division with assistance of volunteer Doris Bowen.

We make an effort to present the most accurate information available at the time this report is published. Please notify the Research, Planning, and Analysis office if you have any questions about the data in this report or about an error that was missed in proofing the report.

The division names adopted in 2003 are used in this report; the old district designations are shown in parentheses.