



**CHARLOTTE-MECKLENBURG POLICE DEPARTMENT
MONTHLY SUMMARY REPORT
NOVEMBER, 2005**

**Darrel Stephens
Chief of Police**

INDEX OFFENSES REPORTED TO CHARLOTTE-MECKLENBURG POLICE DEPARTMENT

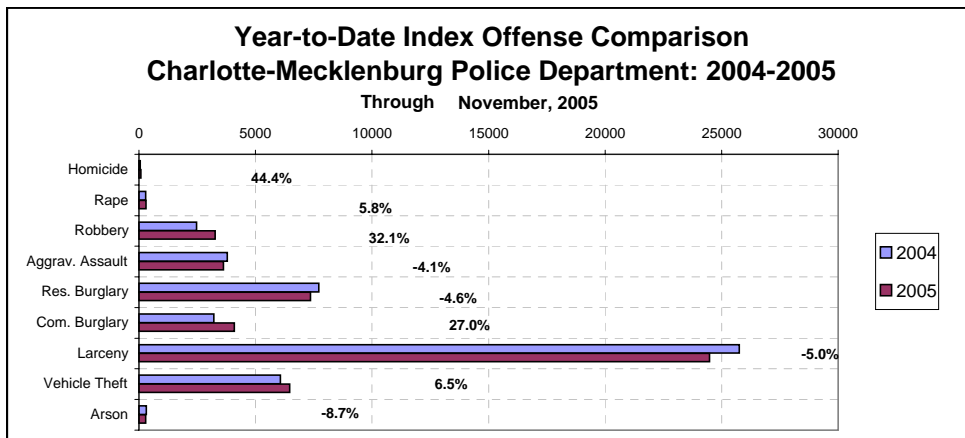
November, 2005 INDEX OFFENSES	# THIS MONTH	% OF ALL INDEX	# LAST MONTH	MONTHLY % CHANGE	SAME MONTH LAST YEAR	MONTHLY % CHANGE	THIS YEAR TO DATE	LAST YEAR TO DATE	ANNUAL % CHANGE
HOMICIDE (MURDER & NON-NEGLIGENT MANSLAUGHTER)	7	0.1%	8	-12.5%	6	16.7%	78	54	44.4%
RAPE TOTAL	30	0.6%	39	-23.1%	15	100.0%	308	291	5.8%
ACTUAL	28	0.6%	36	-22.2%	10	180.0%	291	264	10.2%
ATTEMPT	2	0.0%	3	-33.3%	5	-60.0%	17	27	-37.0%
ROBBERY TOTAL	353	7.4%	344	2.6%	273	29.3%	3269	2475	32.1%
ARMED (*See note below)	301	6.3%	290	3.8%	226	33.2%	2695	1860	44.9%
STRONG-ARM (*See note below)	52	1.1%	54	-3.7%	47	10.6%	574	615	-6.7%
AGGRAVATED ASSAULT TOTAL	340	7.1%	338	0.6%	256	32.8%	3629	3786	-4.1%
BURGLARY TOTAL	1266	26.5%	1162	9.0%	924	37.0%	11448	10935	4.7%
RESIDENTIAL	743	15.6%	745	-0.3%	628	18.3%	7360	7716	-4.6%
COMMERCIAL	523	11.0%	417	25.4%	296	76.7%	4088	3219	27.0%

FORCE	1073	22.5%	961	11.7%	742	44.6%	9349	8870	5.4%
NO FORCE	107	2.2%	115	-7.0%	113	-5.3%	1367	1408	-2.9%
ATTEMPT	86	1.8%	86	0.0%	69	24.6%	731	657	11.3%
LARCENY TOTAL	2194	46.0%	2327	-5.7%	2178	0.7%	24481	25761	-5.0%
\$200 AND OVER	1035	21.7%	1117	-7.3%	1063	-2.6%	11978	12575	-4.7%
\$50 TO \$200	467	9.8%	474	-1.5%	424	10.1%	4907	4766	3.0%
UNDER \$50	692	14.5%	736	-6.0%	691	0.1%	7596	8420	-9.8%

FROM AUTO	1103	23.1%	1258	-12.3%	1114	-1.0%	12287	13260	-7.3%
BICYCLE	15	0.3%	27	-44.4%	22	-31.8%	226	228	-0.9%
SHOPLIFTING	261	5.5%	182	43.4%	227	15.0%	2397	2620	-8.5%
OTHERS	815	17.1%	860	-5.2%	815	0.0%	9571	9653	-0.8%
VEHICLE THEFT TOTAL	537	11.3%	730	-26.4%	536	0.2%	6465	6073	6.5%
ARSON TOTAL	44	0.9%	28	57.1%	26	69.2%	294	322	-8.7%
TOTALS	4771	100.0%	4976	-4.1%	4214	13.2%	49972	49697	0.6%
VIOLENT PROPERTY	730	15.3%	729	0.1%	550	32.7%	7284	6606	10.3%
PROPERTY	4041	84.7%	4247	-4.9%	3664	10.3%	42688	43091	-0.9%

NOTE: Internal robbery breakdowns by armed and strong-arm in October, 200 4, reflect the late reclassification of a number of cases from previous months from armed robbery to strong-arm robbery.

NOTE: These totals include offenses reported to the Charlotte-Mecklenburg Police Department in accordance with the Uniform Crime Reporting Program. Totals for homicide do not include cases investigated by the police but classed by UCR guidelines as negligent manslaughter or as "justifiable homicide."



INDEX CLEARANCES REPORTED BY THE CHARLOTTE-MECKLENBURG POLICE DEPARTMENT

November, 2005 INDEX CLEARANCES	THIS MONTH:		LAST MONTH:		SAME MO. LAST YR:		THIS YEAR TO DATE:		LAST YEAR TO DATE:	
	NO.	%	NO.	%	NO.	%	NO.	%	NO.	%
MURDER & NON-NEGLIGENT MANSLAUGHTER (*See Note 2)	5	71.4%	13	162.5%	5	83.3%	46	59.0%	37	68.5%
RAPE TOTAL	30	100.0%	20	51.3%	12	80.0%	251	81.5%	170	58.4%
ACTUAL	29	103.6%	20	55.6%	11	110.0%	217	74.6%	154	58.3%
ATTEMPT	1	50.0%	0	0.0%	1	20.0%	18	105.9%	16	59.3%
ROBBERY TOTAL	62	17.6%	74	21.5%	62	22.7%	694	21.2%	600	24.2%
ARMED	45	15.0%	64	22.1%	47	20.8%	538	20.0%	432	23.2%
STRONG-ARM	17	32.7%	10	18.5%	15	31.9%	156	27.2%	168	27.3%
AGGRAVATED ASSAULT TOTAL	169	49.7%	158	46.7%	139	54.3%	1811	49.9%	1933	51.1%
BURGLARY TOTAL	84	6.6%	64	5.5%	165	17.9%	1348	11.8%	1194	10.9%
RESIDENTIAL	57	7.7%	48	6.4%	119	18.9%	943	12.8%	964	12.5%
COMMERCIAL	27	5.2%	16	3.8%	46	15.5%	415	10.2%	230	7.1%
LARCENY TOTAL	340	15.5%	299	12.8%	369	16.9%	3571	14.6%	3479	13.5%
FROM AUTO	23	2.1%	33	2.6%	52	4.7%	444	3.6%	399	3.0%
BICYCLE	2	13.3%	1	3.7%	4	18.2%	33	14.6%	18	7.9%
SHOPLIFTING	194	74.3%	135	74.2%	173	76.2%	1636	68.3%	1668	63.7%
OTHERS	121	14.8%	130	15.1%	140	17.2%	1458	15.2%	1394	14.4%
VEHICLE THEFT TOTAL	93	17.3%	104	14.2%	96	17.9%	1039	16.1%	1064	17.5%
ARSON TOTAL	2	4.5%	7	25.0%	3	11.5%	63	21.4%	81	25.2%
TOTALS	785	16.5%	739	14.9%	851	20.2%	8823	17.7%	8558	17.2%
VIOLENT PROPERTY	266	36.4%	265	36.4%	218	39.6%	2802	38.5%	2740	41.5%
	519	12.8%	474	11.2%	633	17.3%	6021	14.1%	5818	13.5%

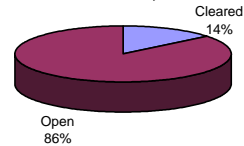
NOTE 1: Clearances are reported in accordance with Uniform Crime Report guidelines. Since clearances are not counted for UCR until they are entered in the Records Management system, any delays in entry of the documentation may result in some clearances being reported later in succeeding months.

NOTE 2: Clearances for eight additional homicides from 1984 - 2000 are not included in the homicide clearance totals above for Jan-Nov, 2005; the UCR homicide clearance rate with clearances of cases from 1984-2000 included is 69% through November, 2005 compared to 72% for the same period in 2004.

**Year-to-Date Violent Index Clearance Rate
Charlotte-Mecklenburg Police Department: 2004
November, 2005**

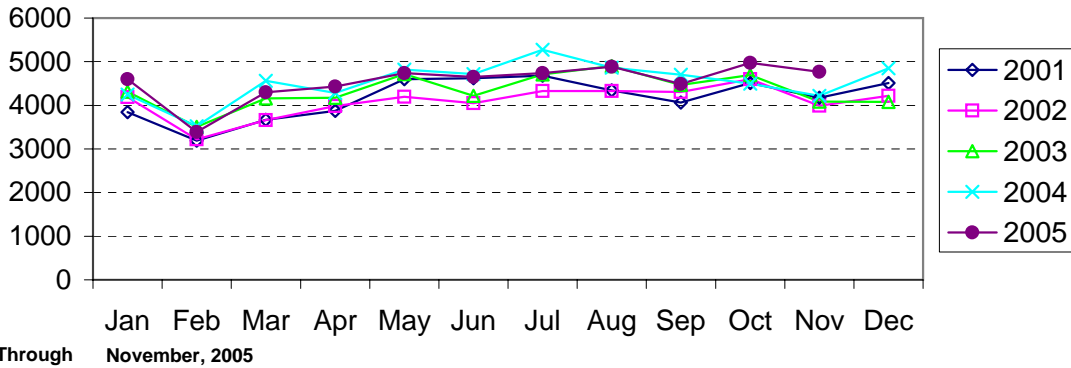


**Year-to-Date Property Index Clearance Rate
Charlotte-Mecklenburg Police Department: 2004
November, 2005**

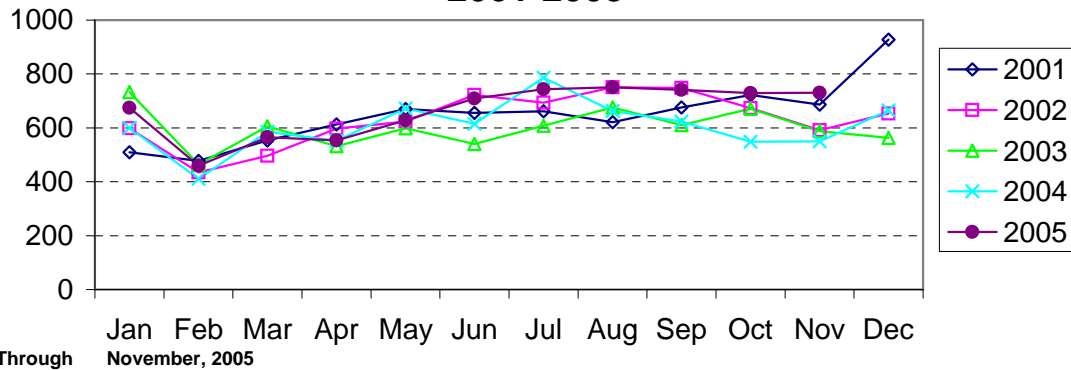


Clearance rates for crime reporting are calculated by dividing the number of crimes cleared during a designated time span by the number of crimes reported in the same period and converting the result to a percentage (multiplying by 100). Since cases from previous reporting periods can be cleared during the designated time span, the rate may be higher than 100%.

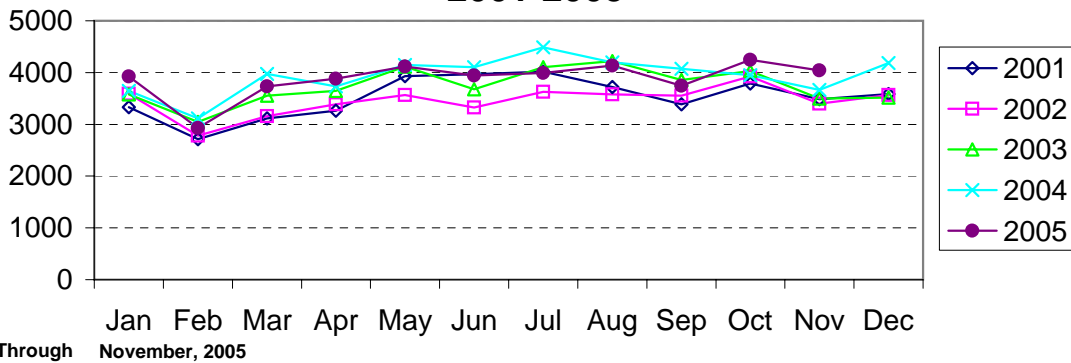
Index Offenses Reported by Month Charlotte-Mecklenburg Police Department: 2001-2005



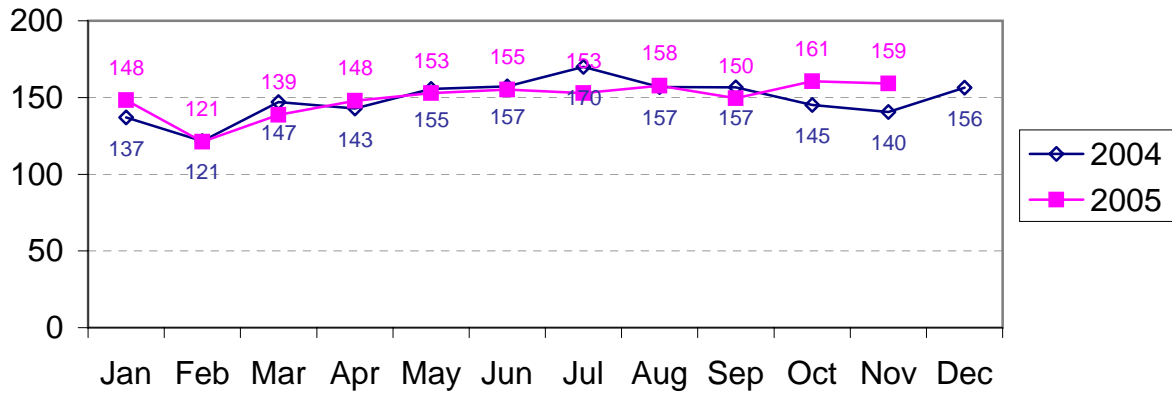
Violent Index Offenses Reported by Month Charlotte-Mecklenburg Police Department: 2001-2005



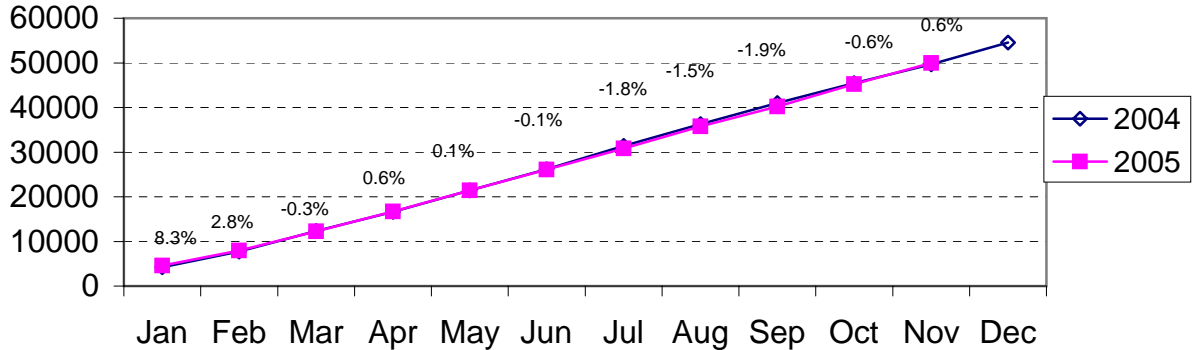
Property Index Offenses Reported by Month Charlotte-Mecklenburg Police Department: 2001-2005



Index Offense Per Day Average by Month Charlotte-Mecklenburg Police Department: 2004-2005

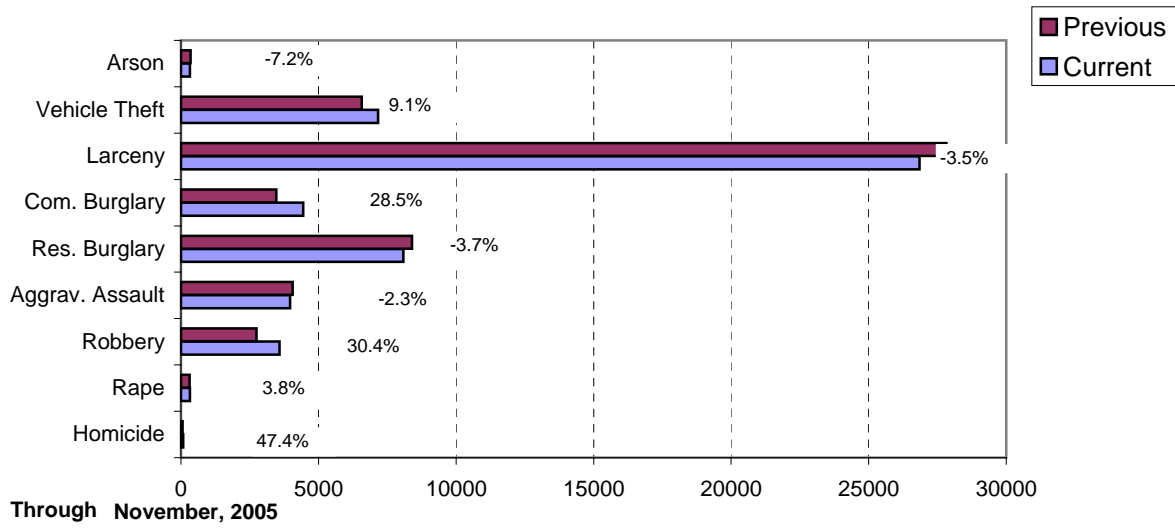


Index Offenses Year-to-Date Cumulative Totals Charlotte-Mecklenburg Police Department: 2004-2005

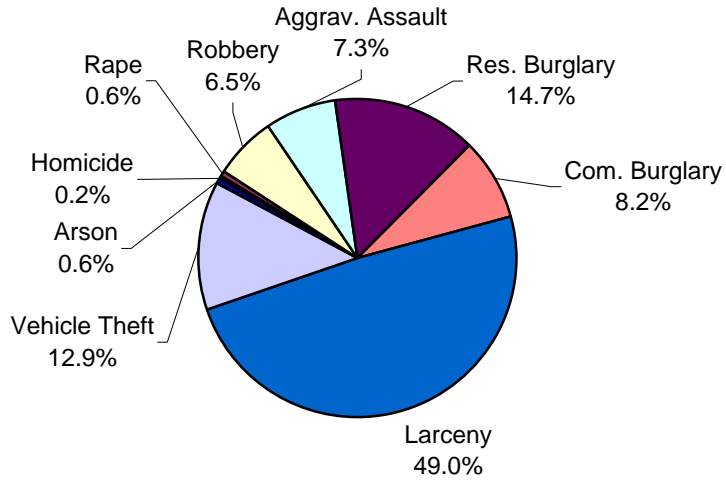


Through November,

Index Offenses in Current and Previous 12 Months Charlotte-Mecklenburg Police Department

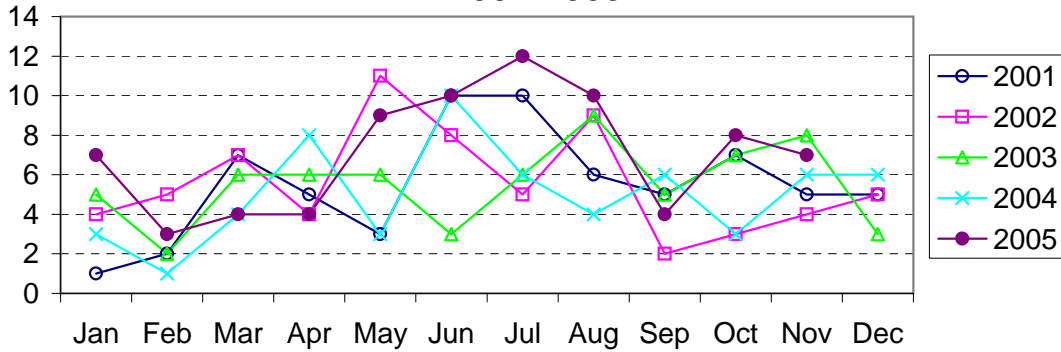


Year-to-Date Index Offenses by Type Charlotte-Mecklenburg Police Department: 2005



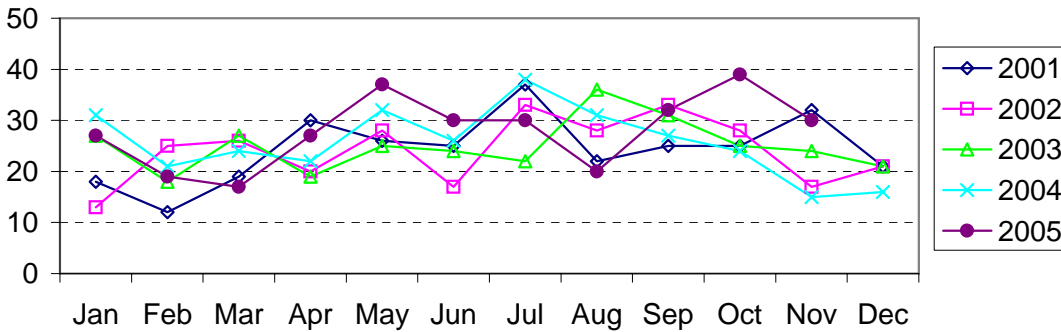
Through November,

Homicide Reported by Month Charlotte-Mecklenburg Police Department: 2001-2005



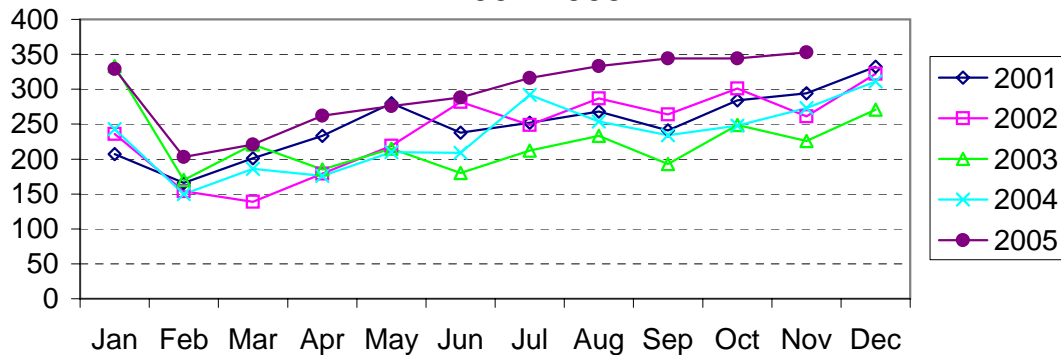
Through November, 2005

Rape Reported by Month Charlotte-Mecklenburg Police Department: 2001-2005



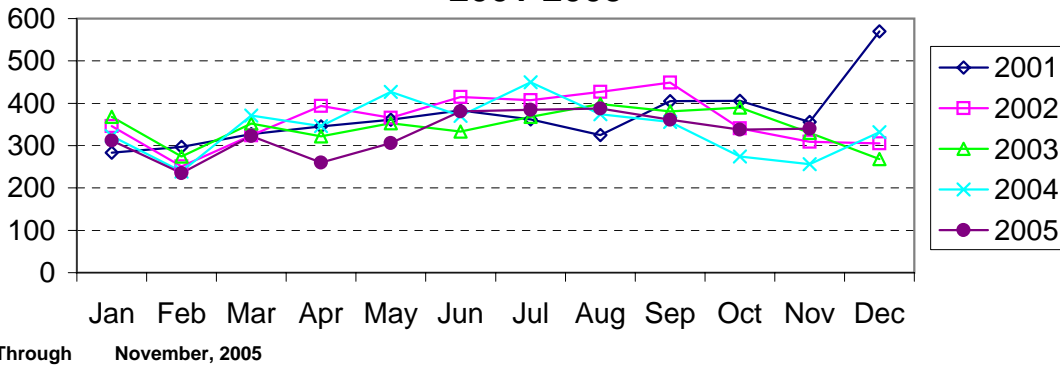
Through November, 2005

Robbery Reported by Month Charlotte-Mecklenburg Police Department: 2001-2005

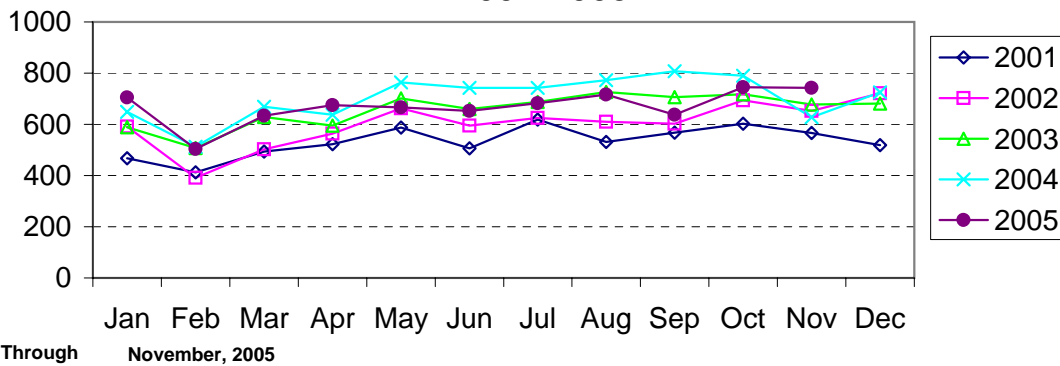


Through November, 2005

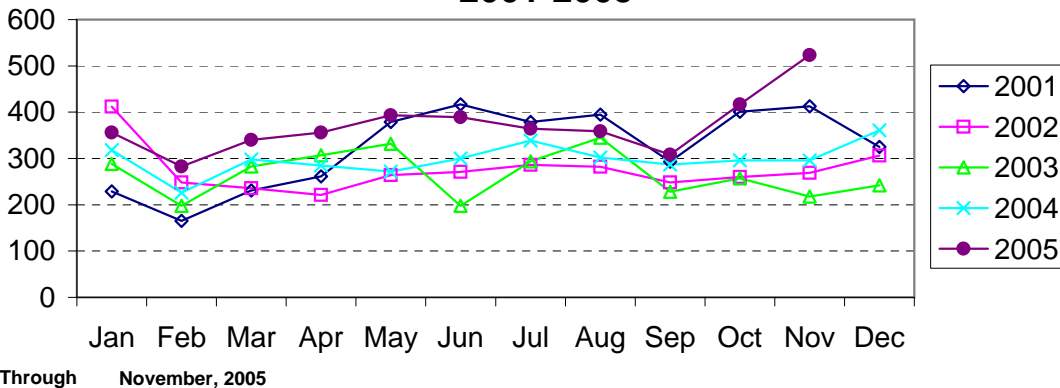
**Aggravated Assault Reported by Month
Charlotte-Mecklenburg Police Department:
2001-2005**



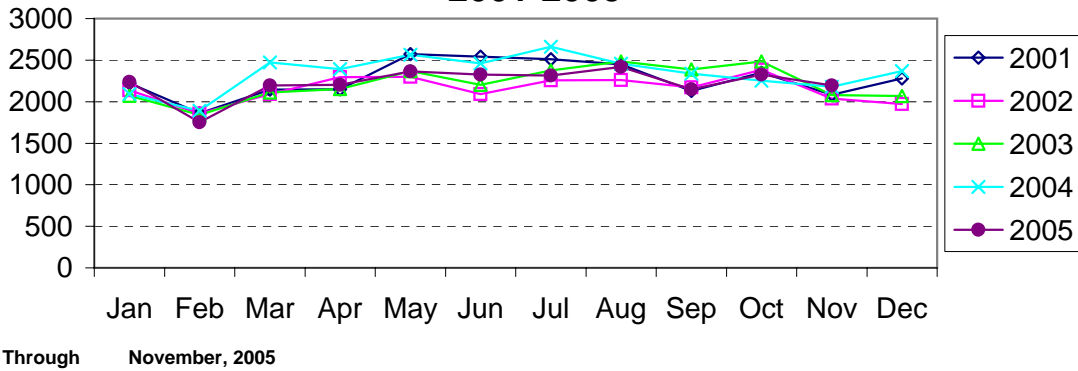
**Residential Burglary Reported by Month
Charlotte-Mecklenburg Police Department:
2001-2005**



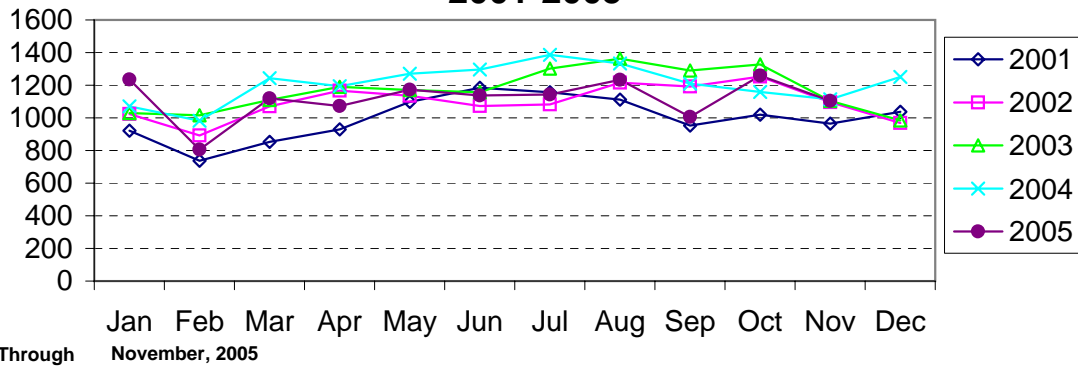
**Commercial Burglary Reported by Month
Charlotte-Mecklenburg Police Department:
2001-2005**



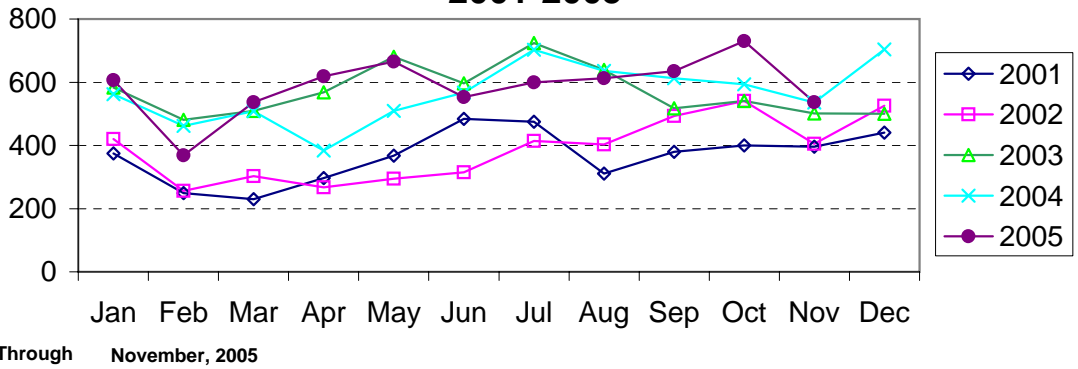
Larceny Reported by Month Charlotte-Mecklenburg Police Department: 2001-2005



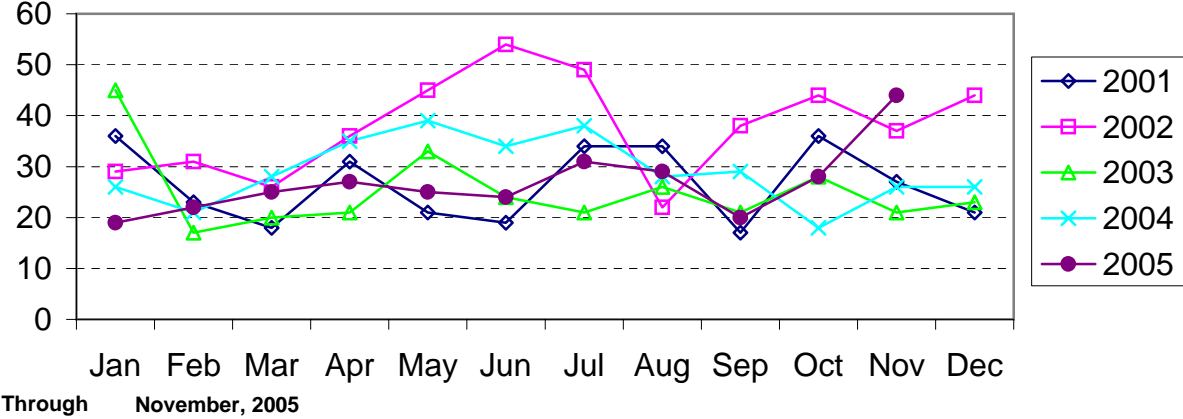
Larceny from Vehicle Reported by Month Charlotte-Mecklenburg Police Department: 2001-2005



Vehicle Theft Reported by Month Charlotte-Mecklenburg Police Department: 2001-2005



Arson Reported by Month Charlotte-Mecklenburg Police Department: 2001-2005



Index Offenses Reported by Division and Service Area of Occurrence									
West Service Area: Jan-Nov, 2004-2005									
INDEX_CATEGORIES	Westover (A2)			Freedom (A3)			West Service Area		
	2004	2005	% Change	2004	2005	% Change	2004	2005	% Change
MURDER & NON-NEGLIGENT MANSLAUGHTER	1	6	500.0%	5	12	140.0%	6	18	200.0%
RAPE	24	22	-8.3%	29	34	17.2%	53	56	5.7%
ACTUAL	24	21	-12.5%	28	32	14.3%	52	53	1.9%
ATTEMPTED	0	1	NA	1	2	100.0%	1	3	200.0%
ROBBERY	192	286	49.0%	270	443	64.1%	462	729	57.8%
ARMED	146	234	60.3%	203	387	90.6%	349	621	77.9%
STRONG-ARM	46	52	13.0%	67	56	-16.4%	113	108	-4.4%
AGGRAVATED ASSAULT	319	434	36.1%	442	431	-2.5%	761	865	13.7%
BURGLARY	827	963	16.4%	1498	1519	1.4%	2325	2482	6.8%
RESIDENTIAL	566	544	-3.9%	1016	920	-9.4%	1582	1464	-7.5%
COMMERCIAL	261	419	60.5%	482	599	24.3%	743	1018	37.0%
LARCENY	1659	1566	-5.6%	2402	2254	-6.2%	4061	3820	-5.9%
FROM AUTO	862	751	-12.9%	1130	969	-14.2%	1992	1720	-13.7%
BICYCLE	11	6	-45.5%	15	17	13.3%	26	23	-11.5%
SHOPLIFTING	122	119	-2.5%	240	249	3.8%	362	368	1.7%
OTHERS	664	690	3.9%	1017	1019	0.2%	1681	1709	1.7%
VEHICLE THEFT	435	466	7.1%	613	651	6.2%	1048	1117	6.6%
ARSON	26	29	11.5%	34	45	32.4%	60	74	23.3%
TOTALS	3483	3772	8.3%	5293	5389	1.8%	8776	9161	4.4%
VIOLENT	536	748	39.6%	746	920	23.3%	1282	1668	30.1%
PROPERTY	2947	3024	2.6%	4547	4469	-1.7%	7494	7493	0.0%

Index Offenses Reported by Division and Service Area of Occurrence									
Southeast Service Area: Jan-Nov, 2004-2005									
INDEX_CATEGORIES	Providence (B1)			Independence (B3)			Southeast Service Area		
	2004	2005	% Change	2004	2005	% Change	2004	2005	% Change
MURDER & NON-NEGLIGENT MANSLAUGHTER	3	4	33.3%	5	4	-20.0%	8	8	0.0%
RAPE	13	17	30.8%	23	24	4.3%	36	41	13.9%
ACTUAL	12	16	33.3%	21	22	4.8%	33	38	15.2%
ATTEMPTED	1	1	0.0%	2	2	0.0%	3	3	0.0%
ROBBERY	120	112	-6.7%	213	276	29.6%	333	388	16.5%
ARMED	86	89	3.5%	159	234	47.2%	245	323	31.8%
STRONG-ARM	34	23	-32.4%	54	42	-22.2%	88	65	-26.1%
AGGRAVATED ASSAULT	152	124	-18.4%	306	275	-10.1%	458	399	-12.9%
BURGLARY	749	853	13.9%	994	890	-10.5%	1743	1743	0.0%
RESIDENTIAL	461	569	23.4%	782	669	-14.5%	1243	1238	-0.4%
COMMERCIAL	288	284	-1.4%	212	221	4.2%	500	505	1.0%
LARCENY	1811	1789	-1.2%	2080	2165	4.1%	3891	3954	1.6%
FROM AUTO	837	821	-1.9%	1157	1160	0.3%	1994	1981	-0.7%
BICYCLE	18	22	22.2%	20	17	-15.0%	38	39	2.6%
SHOPLIFTING	181	223	23.2%	171	239	39.8%	352	462	31.3%
OTHERS	775	723	-6.7%	732	749	2.3%	1507	1472	-2.3%
VEHICLE THEFT	366	291	-20.5%	610	672	10.2%	976	963	-1.3%
ARSON	14	10	-28.6%	31	28	-9.7%	45	38	-15.6%
TOTALS	3228	3200	-0.9%	4262	4334	1.7%	7490	7534	0.6%
VIOLENT	288	257	-10.8%	547	579	5.9%	835	836	0.1%
PROPERTY	2940	2943	0.1%	3715	3755	1.1%	6655	6698	0.6%

The data in the district breakdowns does not include a small number of offenses in which the offense location (or reporting location if offense location was unknown) was entered without one of the 12 valid division assignments. Districts are not equal in geographic size, demographics, zoning/development, and other factors that influence the rate of crimes committed in an area. Therefore, the comparison of raw offense totals across districts is **not** advisable.

Index Offenses Reported by Division and Service Area of Occurrence									
Northeast Service Area: Jan-Nov, 2004-2005									
INDEX_CATEGORIES	North (C1)			Hickory Grove (C3)			Northeast Service Area		
	2004	2005	% Change	2004	2005	% Change	2004	2005	% Change
MURDER & NON-NEGLIGENT MANSLAUGHTER	6	11	83.3%	3	9	200.0%	9	20	122.2%
RAPE	38	38	0.0%	34	38	11.8%	72	76	5.6%
ACTUAL	36	34	-5.6%	29	35	20.7%	65	69	6.2%
ATTEMPTED	2	4	100.0%	5	3	-40.0%	7	7	0.0%
ROBBERY	236	254	7.6%	215	318	47.9%	451	572	26.8%
ARMED	185	216	16.8%	178	259	45.5%	363	475	30.9%
STRONG-ARM	51	38	-25.5%	37	56	51.4%	88	94	6.8%
AGGRAVATED ASSAULT	325	332	2.2%	400	388	-3.0%	725	720	-0.7%
BURGLARY	1467	1412	-3.7%	1093	1448	32.5%	2560	2860	11.7%
RESIDENTIAL	1029	935	-9.1%	870	925	6.3%	1899	1860	-2.1%
COMMERCIAL*	438	477	8.9%	219	523	138.8%	657	1000	52.2%
LARCENY	3857	4120	6.8%	1948	1879	-3.5%	5805	5999	3.3%
FROM AUTO	2185	2251	3.0%	975	1023	4.9%	3160	3274	3.6%
BICYCLE	20	28	40.0%	42	31	-26.2%	62	59	-4.8%
SHOPLIFTING	330	368	11.5%	136	152	11.8%	466	520	11.6%
OTHERS	1322	1473	11.4%	795	673	-15.3%	2117	2146	1.4%
VEHICLE THEFT	786	898	14.2%	623	703	12.8%	1409	1601	13.6%
ARSON	43	41	-4.7%	40	36	-10.0%	83	77	-7.2%
TOTALS	6758	7106	5.1%	4356	4819	10.6%	11114	11925	7.3%
VIOLENT PROPERTY	605 6153	635 6471	5.0% 5.2%	652 3704	753 4066	15.5% 9.8%	1257 9857	1388 10537	10.4% 6.9%

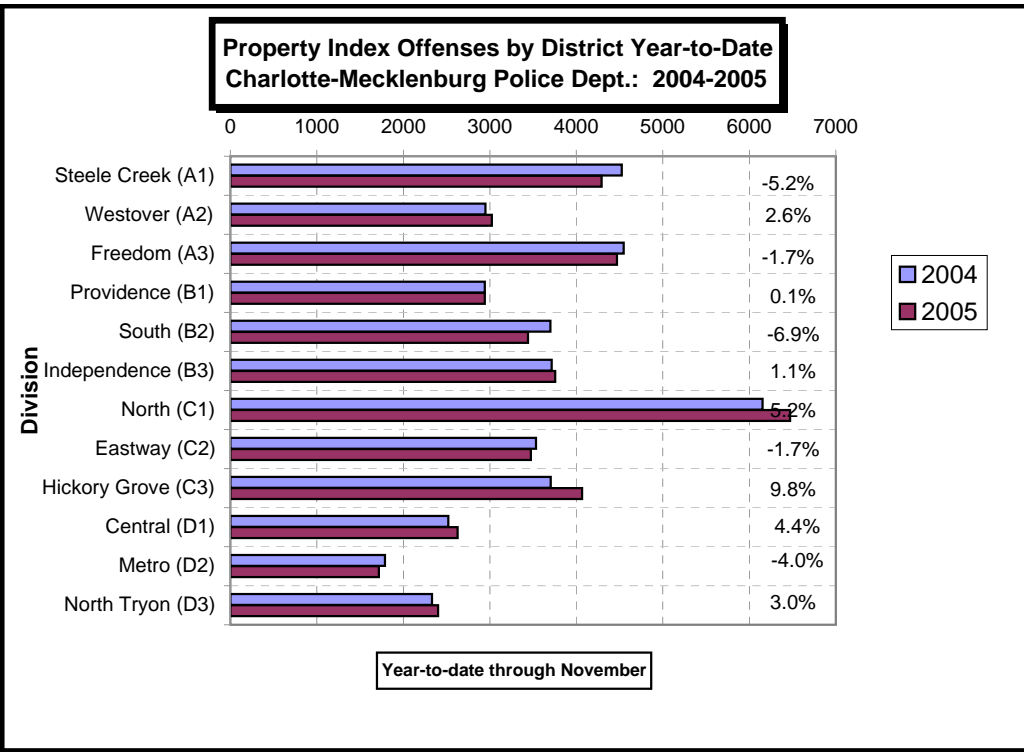
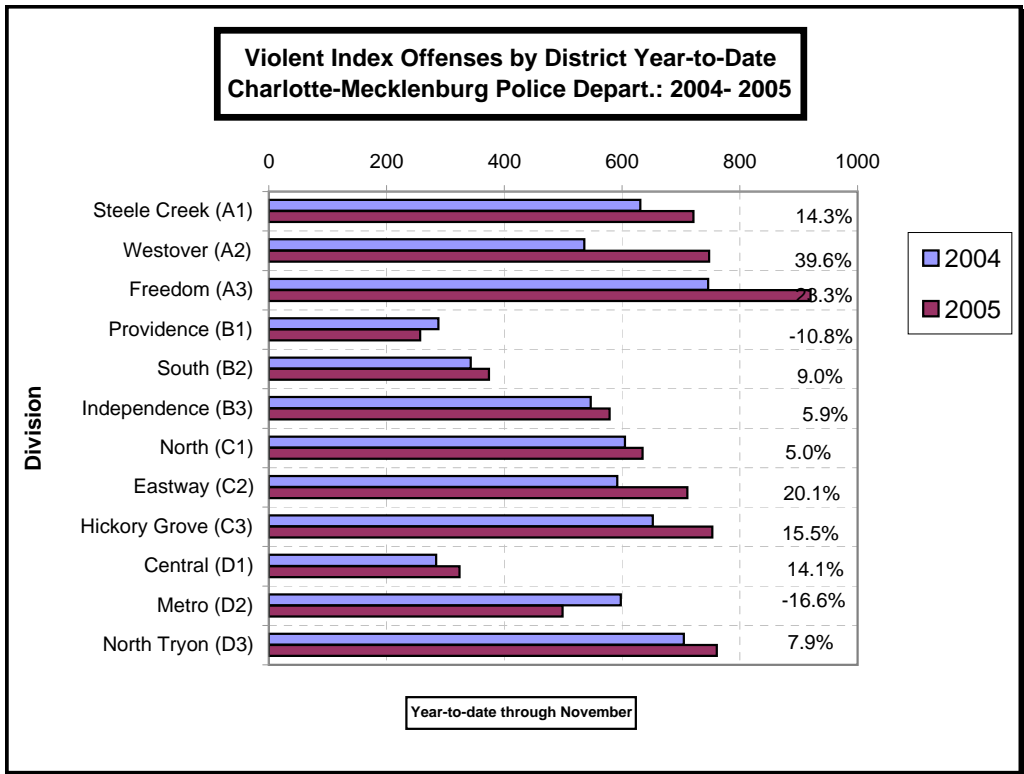
Index Offenses Reported by Division and Service Area of Occurrence									
Central Service Area: Jan-Nov, 2004-2005									
INDEX_CATEGORIES	Central (D1)			Metro (D2)			Central Service Area		
	2004	2005	% Change	2004	2005	% Change	2004	2005	% Change
MURDER & NON-NEGLIGENT MANSLAUGHTER	1	4	300.0%	7	7	0.0%	8	11	37.5%
RAPE	18	35	94.4%	23	14	-39.1%	41	49	19.5%
ACTUAL	17	34	100.0%	22	15	-31.8%	39	49	25.6%
ATTEMPTED	1	1	0.0%	1	-1	-200.0%	2	0	-100.0%
ROBBERY	120	160	33.3%	198	187	-5.6%	318	347	9.1%
ARMED	70	101	44.3%	154	147	-4.5%	224	248	10.7%
STRONG-ARM	50	59	18.0%	44	40	-9.1%	94	99	5.3%
AGGRAVATED ASSAULT	145	125	-13.8%	370	291	-21.4%	515	416	-19.2%
BURGLARY	362	359	-0.8%	589	554	-5.9%	951	913	-4.0%
RESIDENTIAL	157	124	-21.0%	433	411	-5.1%	590	535	-9.3%
COMMERCIAL	205	235	14.6%	156	143	-8.3%	361	378	4.7%
LARCENY	1857	1900	2.3%	886	803	-9.4%	2743	2703	-1.5%
FROM AUTO	1011	1016	0.5%	399	364	-8.8%	1410	1380	-2.1%
BICYCLE	20	34	70.0%	8	10	25.0%	28	44	57.1%
SHOPLIFTING	65	64	-1.5%	59	28	-52.5%	124	92	-25.8%
OTHERS	762	786	3.1%	421	401	-4.8%	1183	1187	0.3%
VEHICLE THEFT	294	369	25.5%	298	340	14.1%	592	709	19.8%
ARSON	5	0	-100.0%	15	19	26.7%	20	19	-5.0%
TOTALS	2802	2952	5.4%	2386	2215	-7.2%	5188	5167	-0.4%
VIOLENT PROPERTY	284 2518	324 2628	14.1% 4.4%	598 1788	499 1716	-16.6% -4.0%	882 4306	823 4344	-6.7% 0.9%

*The Commercial Burglary total in the Hickory Grove Division in 2005 includes incidents at mini-storage businesses where 50 and 65 units were entered or attempted; UCR requires counting each unit as a burglary. Districts are not equal in geographic size, demographics, zoning/development, and other factors that influence the rate of crimes committed in an area. Therefore, the comparison of raw offense totals across districts is not advisable.

Index Offenses Reported by Division and Service Area of Occurrence									
East Service Area: Jan-Nov, 2004-2005									
INDEX_CATEGORIES	Eastway (C2)			North Tryon (D3)			East Service Area		
	2004	2005	% Change	2004	2005	% Change	2004	2005	% Change
MURDER & NON-NEGLIGENT MANSLAUGHTER	7	7	0.0%	8	6	-25.0%	15	13	-13.3%
RAPE	20	24	20.0%	18	9	-50.0%	38	33	-13.2%
ACTUAL	16	23	43.8%	14	8	-42.9%	30	31	3.3%
ATTEMPTED	4	1	-75.0%	4	1	-75.0%	8	2	-75.0%
ROBBERY	276	418	51.4%	267	326	22.1%	543	744	37.0%
ARMED	203	342	68.5%	194	271	39.7%	397	613	54.4%
STRONG-ARM	73	76	4.1%	73	55	-24.7%	146	131	-10.3%
AGGRAVATED ASSAULT	289	262	-9.3%	412	420	1.9%	701	682	-2.7%
BURGLARY	917	974	6.2%	683	801	17.3%	1600	1775	10.9%
RESIDENTIAL	680	721	6.0%	454	473	4.2%	1134	1194	5.3%
COMMERCIAL	237	253	6.8%	229	331	44.5%	466	584	25.3%
LARCENY	2087	1996	-4.4%	1214	1172	-3.5%	3301	3168	-4.0%
FROM AUTO	750	759	1.2%	584	571	-2.2%	1334	1330	-0.3%
BICYCLE	28	24	-14.3%	9	7	-22.2%	37	31	-16.2%
SHOPLIFTING	692	481	-30.5%	96	63	-34.4%	788	544	-31.0%
OTHERS	617	732	18.6%	525	531	1.1%	1142	1263	10.6%
VEHICLE THEFT	500	483	-3.4%	423	416	-1.7%	923	899	-2.6%
ARSON	29	21	-27.6%	11	11	0.0%	40	32	-20.0%
TOTALS	4125	4185	1.5%	3036	3161	4.1%	7161	7346	2.6%
VIOLENT PROPERTY	592 3533	711 3474	20.1% -1.7%	705 2331	761 2400	7.9% 3.0%	1297 5864	1472 5874	13.5% 0.2%

Index Offenses Reported by Division and Service Area of Occurrence									
South Service Area: Jan-Nov, 2004-2005									
INDEX_CATEGORIES	Steele Creek (A1)			South (B2)			South Service Area		
	2004	2005	% Change	2004	2005	% Change	2004	2005	% Change
MURDER & NON-NEGLIGENT MANSLAUGHTER	7	8	14.3%	1	0	-100.0%	8	8	0.0%
RAPE	23	34	47.8%	16	17	6.3%	39	51	30.8%
ACTUAL	20	32	60.0%	13	17	30.8%	33	49	48.5%
ATTEMPTED	3	2	-33.3%	3	0	-100.0%	6	2	-66.7%
ROBBERY	219	303	38.4%	123	186	51.2%	342	489	43.0%
ARMED	171	256	49.7%	91	159	74.7%	262	415	58.4%
STRONG-ARM	48	47	-2.1%	32	27	-15.6%	80	74	-7.5%
AGGRAVATED ASSAULT	382	376	-1.6%	203	171	-15.8%	585	547	-6.5%
BURGLARY	883	844	-4.4%	798	830	4.0%	1681	1674	-0.4%
RESIDENTIAL	543	506	-6.8%	625	565	-9.6%	1168	1071	-8.3%
COMMERCIAL	340	338	-0.6%	173	265	53.2%	513	603	17.5%
LARCENY	3031	2680	-11.6%	2426	2153	-11.3%	5457	4833	-11.4%
FROM AUTO	1723	1417	-17.8%	1381	1183	-14.3%	3104	2600	-16.2%
BICYCLE	23	16	-30.4%	13	14	7.7%	36	30	-16.7%
SHOPLIFTING	365	246	-32.6%	145	165	13.8%	510	411	-19.4%
OTHERS	920	1001	8.8%	887	791	-10.8%	1807	1792	-0.8%
VEHICLE THEFT	569	740	30.1%	445	432	-2.9%	1014	1172	15.6%
ARSON	41	27	-34.1%	29	27	-6.9%	70	54	-22.9%
TOTALS	5155	5012	-2.8%	4041	3816	-5.6%	9196	8828	-4.0%
VIOLENT PROPERTY	631 4524	721 4291	14.3% -5.2%	343 3698	374 3442	9.0% -6.9%	974 8222	1095 7733	12.4% -5.9%

The data in the district breakdowns does not include a small number of offenses in which the offense location (or reporting location if offense location was unknown) was entered without one of the 12 valid division assignments. Districts are not equal in geographic size, demographics, zoning/development, and other factors that influence the rate of crimes committed in an area. Therefore, the comparison of raw offense totals across districts is **not** advisable.



The data in the district breakdowns does not include a small number of offenses in which the offense location (or reporting location if offense location was unknown) was entered without one of the 12 valid division assignments. Districts are not equal in geographic size, demographics, zoning/development, and other factors that influence the rate of crimes committed in an area. Therefore, the comparison of raw offense totals across districts is **not** advisable.

Arrests by Charlotte-Mecklenburg Police Department
Year-To-Date: 2004-2005
(Through November)

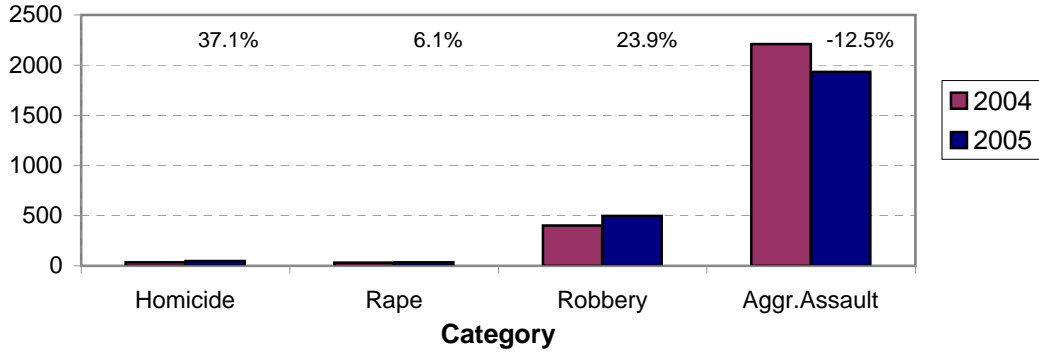
CATEGORY	ADULTS (AGE 18 & OLDER):			JUVENILES (UNDER 18):			TOTAL ARRESTS:		
	2004 Y-T-D	2005 Y-T-D	% CHANGE	2004 Y-T-D	2005 Y-T-D	% CHANGE	2004 Y-T-D	2005 Y-T-D	% CHANGE
Murder/Non-Negligent Manslaughter	33	45	36.4%	2	3	50.0%	35	48	37.1%
Negligent & Vehicular Manslaughter	4	3	-25.0%	0	0	NA	4	3	-25.0%
Rape	31	34	9.7%	2	1	-50.0%	33	35	6.1%
Robbery	269	385	43.1%	132	112	-15.2%	401	497	23.9%
Aggravated Assault	1917	1669	-12.9%	292	264	-9.6%	2209	1933	-12.5%
Burglary	538	565	5.0%	192	226	17.7%	730	791	8.4%
Larceny	1447	1436	-0.8%	550	493	-10.4%	1997	1929	-3.4%
Vehicle Theft	72	84	16.7%	142	104	-26.8%	214	188	-12.1%
Non-Aggravated Assault	1687	1855	10.0%	740	694	-6.2%	2427	2549	5.0%
Arson	15	13	-13.3%	31	25	-19.4%	46	38	-17.4%
Forgery/Counterfiet	132	137	3.8%	2	3	50.0%	134	140	4.5%
Fraud	503	553	9.9%	9	5	-44.4%	512	558	9.0%
Embezzlement	82	84	2.4%	13	11	-15.4%	95	95	0.0%
Stolen Property	471	462	-1.9%	93	133	43.0%	564	595	5.5%
Vandalism	198	204	3.0%	185	210	13.5%	383	414	8.1%
Weapons	403	565	40.2%	59	58	-1.7%	462	623	34.8%
Prostitution	341	279	-18.2%	8	2	-75.0%	349	281	-19.5%
Sex Offenses	183	159	-13.1%	18	27	50.0%	201	186	-7.5%
Drugs	2492	2460	-1.3%	238	259	8.8%	2730	2719	-0.4%
Gambling	14	8	-42.9%	0	0	NA	14	8	-42.9%
Offenses vs. Family	5	5	0.0%	1	0	-100.0%	6	5	-16.7%
DUI	1788	1893	5.9%	11	11	0.0%	1799	1904	5.8%
Liquor	199	201	1.0%	9	11	22.2%	208	212	1.9%
Disorder.Conduct	529	478	-9.6%	268	295	10.1%	797	773	-3.0%
Other Non-Traffic	7361	7264	-1.3%	698	767	9.9%	8059	8031	-0.3%
VIOLENT INDEX¹	2250	2133	-5.2%	428	380	-11.2%	2678	2513	-6.2%
PROPERTY INDEX²	2072	2098	1.3%	915	848	-7.3%	2987	2946	-1.4%
INDEX SUBTOTAL	4322	4231	-2.1%	1343	1228	-8.6%	5665	5459	-3.6%
PART 2 SUBTOTAL³	16392	16610	1.3%	2352	2486	5.7%	18744	19096	1.9%
TOTAL	20714	20841	0.6%	3695	3714	0.5%	24409	24555	0.6%

¹Violent Index includes murder and non-negligent manslaughter, rape, robbery, and aggravated assault.

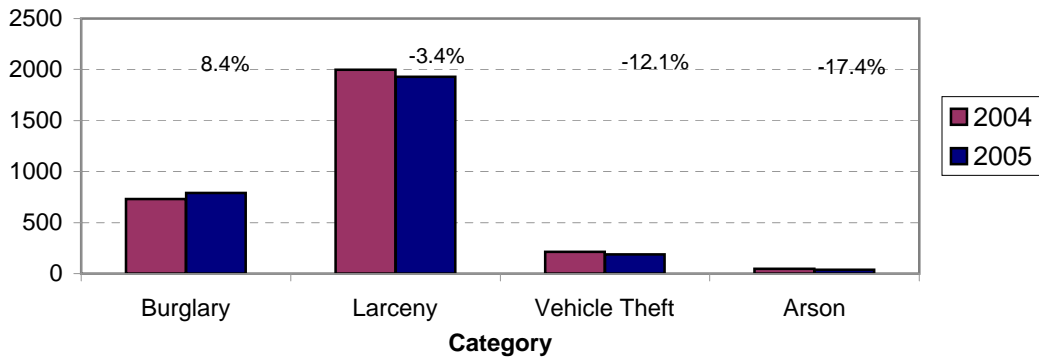
²Property Index includes burglary, larceny, vehicle theft, and arson.

³Part 2 crimes include crime categories not counted in the Index totals.

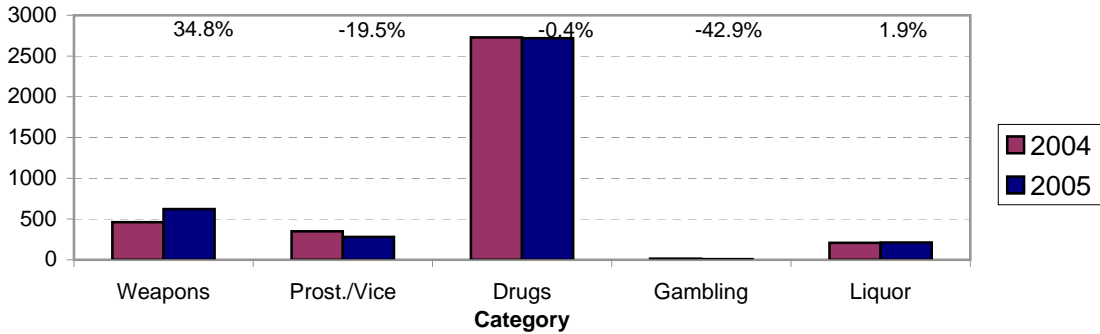
**Violent Index Arrests Year-to-Date
Charlotte-Mecklenburg Police Department: 2004-2005
(Through November)**



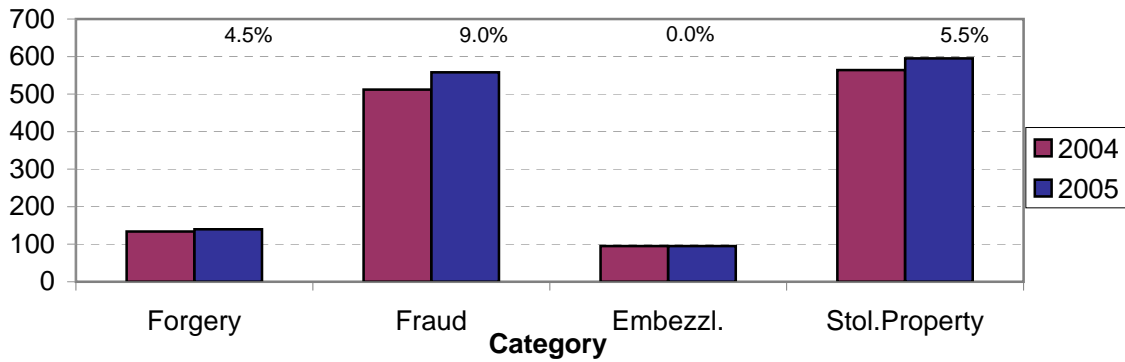
**Property Index Arrests Year-to-Date
Charlotte-Mecklenburg Police Department: 2004-2005
(Through November)**



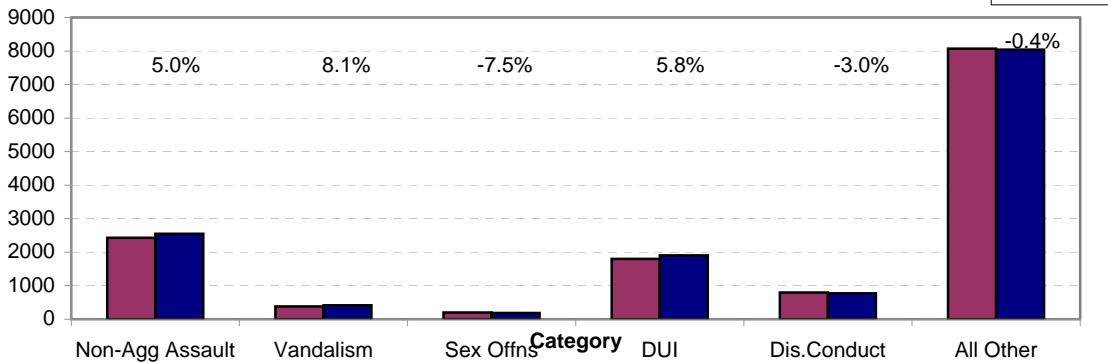
**Arrests for Vice/CCW/Drugs/Etc. Year-to-Date
Charlotte-Mecklenburg Police Department: 2004 - 2005
(Through November)**



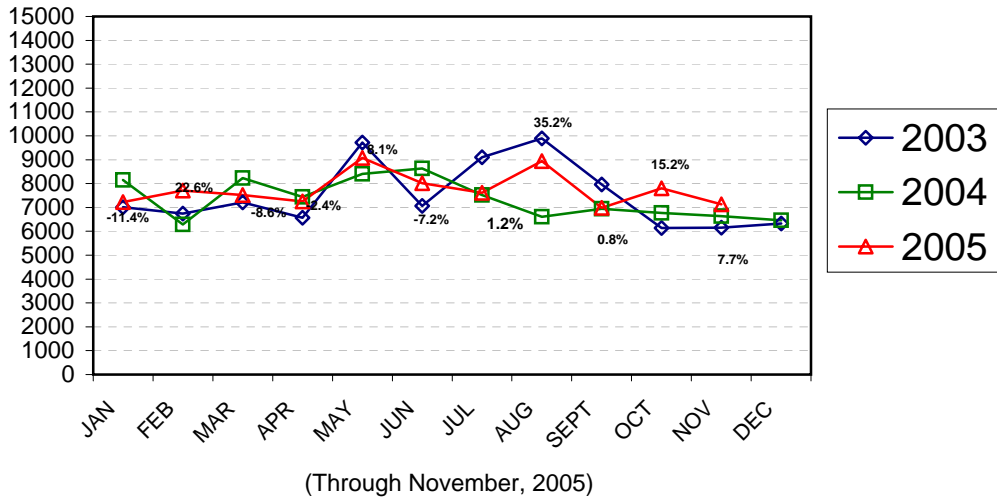
**Arrests for Property/White Collar Crime Year-to-Date
Charlotte-Mecklenburg Police Department: 2004- 2005
(Through November)**



**Arrests for Other Categories Year-to-Date
Charlotte-Mecklenburg Police Department: 2004 - 2005
(Through November)**

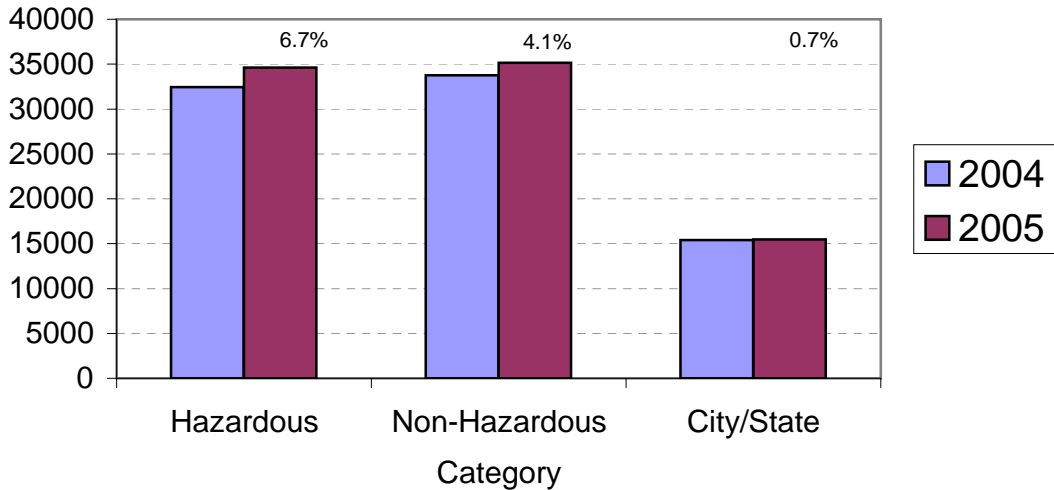


Total Citation Enforcement by Month Charlotte-Mecklenburg Police Dept.: 2003-2005

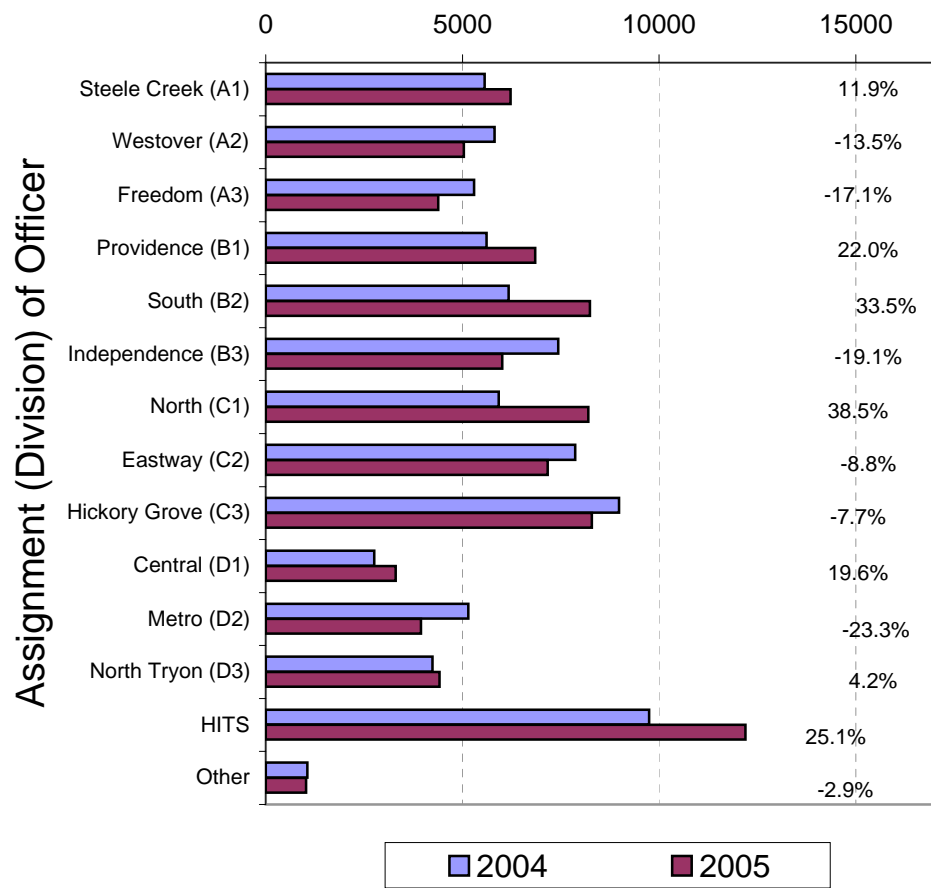


(Includes Hazardous, Non-Hazardous, and City/State Citations; percentages are current month compared to same month in previous year)

CMPD Citation Enforcement by Category Year-to-Date, 2004 - 2005 (Through November, 2005)



**Citations Issued Year-to-Date by CMPD Divisions
2004 - 2005
(Through November, 2005)**



Note: 2003 and 2004 data for HITS and Other was adjusted in April, 2004.

**Citations Issued by the Charlotte Mecklenburg Police Officers Year-to-Date
(Through November, 2005)**

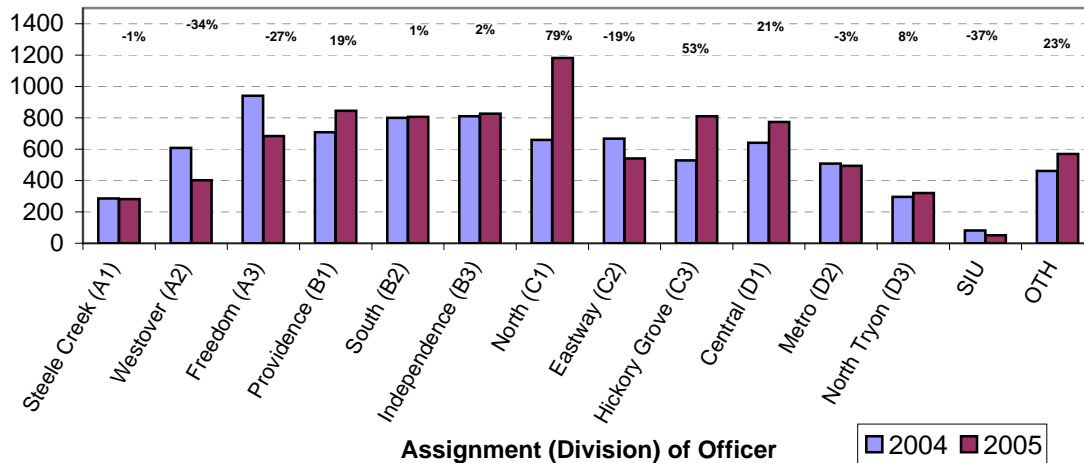
Total Citations	2004	2005	% Change
Hazardous	32,440	34,617	6.7%
Non-Hazardous	33,777	35,169	4.1%
Other City/State Statute/Ordinance	15,387	15,490	0.7%
Total	81,604	85,276	4.5%

**"Safe Speed" Program: 2005
(Through November, 2005)**

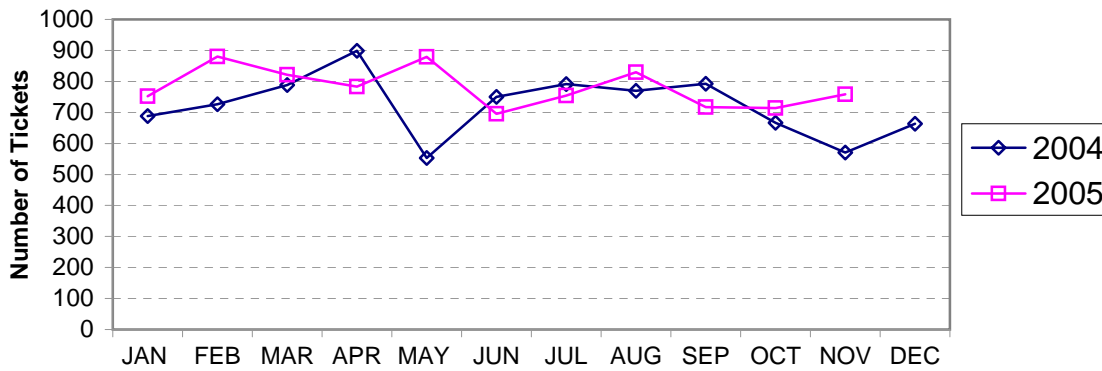
Total Citations 40053

(Citations issued through the "Safe Speed" program are not included in the CMPD citation totals used in the summary chart above or in the other citation charts.)

**Warning Tickets Issued by CMPD Division
Year-to-Date, 2004 - 2005
Through November,**



**Total Warning Tickets Issued by CMPD
By Month: 2004 - 2005**



**Warning Tickets Issued by CMPD Year-to-Date
Through November, 2005**

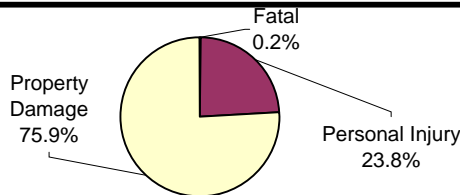
	2004	2005	% Change
Total Warning Tickets	7998	8585	7.3%

**Traffic Collision Reports
Charlotte-Mecklenburg Police Department
Year-to-Date: 2004-2005
(Through November)**

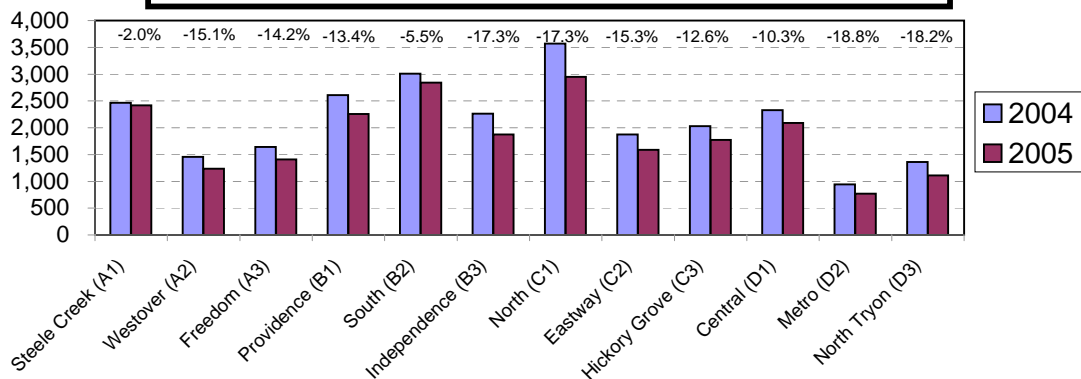
Type	2004	2005	% Change
Fatal Collisions	35	49	40.0%
Vehicle Occupants Killed	32	42	31.3%
Pedestrians Killed	5	8	60.0%
Personal Injury Collisions	6331	5293	-16.1%
Property Damage Collisions	19247	17024	-11.5%
Total Collisions	25613	22366	-12.7%

* The number of fatal collisions and the number of persons killed (fatalities) in those incidents is taken from the HITS file. Their records are updated for deaths that occur after the initial report is filed.

**Traffic Collisions Reported by Type
Charlotte-Mecklenburg Police Department:
2005 Year-to-Date
(Through November)**



**Traffic Collisions Reported by Charlotte-Mecklenburg Police Dept.
Year-to-Date By Location (Division) : 2004 -2005
(Through November)**



**CITIZEN-INITIATED CALLS FOR SERVICE¹ BY TYPE
CHARLOTTE-MECKLENBURG POLICE DEPARTMENT**

<u>Type of Call²</u>	<u>2004 Year-to-Date</u>	<u>2005 Year-to-Date</u>	<u>Year-to-Date</u>
	<u>Jan through Nov</u>	<u>Jan through Nov</u>	<u>% Change</u>
ABC RELATED	2004	2100	4.8%
ACCIDENT	33170	32771	-1.2%
ALARM	30215	31591	4.6%
ANIMAL CONTROL	246	216	-12.2%
ASSAULT	4245	4009	-5.6%
ASSAULT WITH DEADLY WEAPON	1347	1603	19.0%
ASSIST OTHER AGENCY	6685	7412	10.9%
BOMB THREAT	117	112	-4.3%
BREAK/ENTER	16509	16788	1.7%
COMMUNICATING THREATS	3318	1780	-46.4%
COUNTY SECURITY ³	8	8	0.0%
CRIMINAL INTELLIGENCE	2	23	1050.0%
DAMAGE TO PROPERTY	6745	3730	-44.7%
DEATH	287	240	-16.4%
DISTURBANCE	23720	24726	4.2%
DOMESTIC INCIDENT	32457	33800	4.1%
DRUG RELATED	4064	3659	-10.0%
FIGHT	3037	3094	1.9%
FIRE	24	10	-58.3%
FIRE CASE	97	79	-18.6%
FRAUD/FORGERY	3087	1464	-52.6%
GAMBLING	27	16	-40.7%
HARASSMENT	1623	339	-79.1%
HIT AND RUN	6553	6976	6.5%
JUVENILE RELATED	1840	2095	13.9%
KIDNAPPING	178	193	8.4%
LAKE ENFORCEMENT	84	63	-25.0%
LARCENY	28132	9602	-65.9%
LOITERING	3872	4571	18.1%
MAJOR INCIDENT	20	23	15.0%
MISSING PERSON	6786	5625	-17.1%
NOISE COMPLAINT	12901	13385	3.8%
OFFENSE AGAINST FAMILY	7	11	57.1%
OFFICER CALLED IN	691	667	-3.5%
OVERDOSE	319	373	16.9%
PORNOGRAPHY	8	5	-37.5%
PROPERTY	3575	3484	-2.5%
PROSTITUTION	920	1204	30.9%
PUBLIC SERVICE	17492	20959	19.8%
QUALITY OF LIFE	1231	1696	37.8%
ROBBERY	2638	3468	31.5%
SEX CRIME	1115	1101	-1.3%
SPECIAL SERVICE REQUEST	8	9	12.5%
SUICIDE	1116	1064	-4.7%
SUSPICIOUS PERSON	17285	18252	5.6%
TRAFFIC RELATED	9592	10047	4.7%
TRESPASS	3951	4068	3.0%
VEHICLE RELATED	30187	26361	-12.7%
VIOLENT CRIMES TASK FORCE	13	1	-92.3%
WARRANT RELATED	3376	3293	-2.5%
WEAPON RELATED	6334	7369	16.3%
911 HANG UP / CALLBACK	28729	24001	-16.5%
TOTAL	361987	339536	-6.2%

¹These totals exclude duplicate and cancelled calls for service; they include calls handled by the Crime Reporting Unit as well as by division field officers, detectives and other CMPD staff.

²The type of call is entered by Communications based on the 911 call unless updated by an officer assigned to respond.

³In this summary, calls to Animal Control or Mecklenburg County Security include only those calls that involved the dispatching of other C-MPD officers, detectives, or staff.

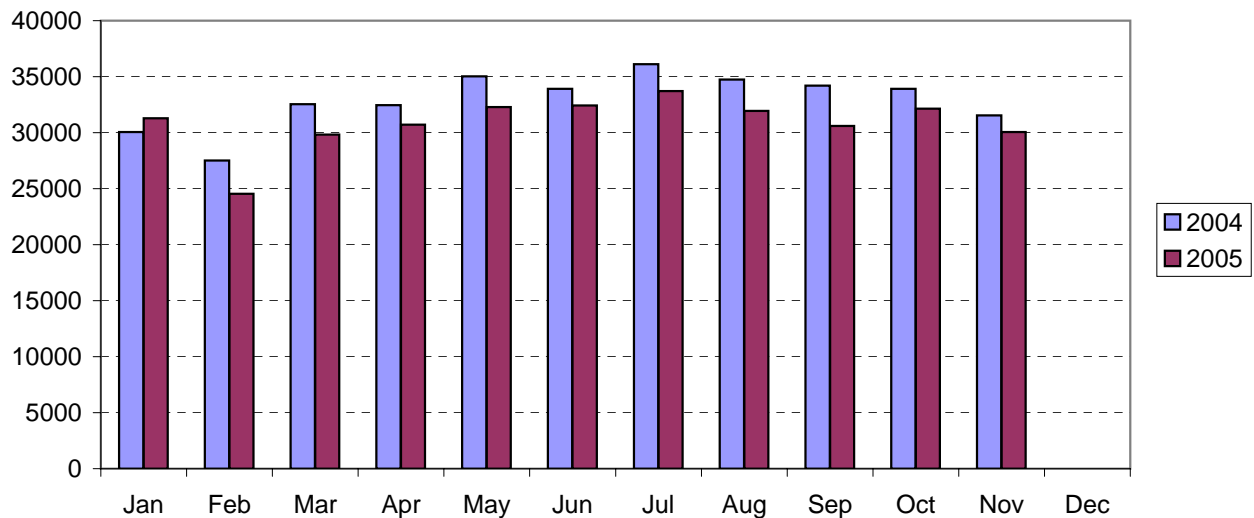
CITIZEN-INITIATED CALLS FOR SERVICE BY ORIGINATING CMPD DIVISION^{1,2}
 (Based on District of Call Origination, Not on Assigned District of Responding Units)

<u>District</u>	<u>2004 Year-to-Date</u>	<u>2005 Year-to-Date</u>	<u>Year-to-Date</u>
	<u>Jan through Nov</u>	<u>Jan through Nov</u>	<u>% Change</u>
Central-01 (D1)	21661	21219	-2.0%
Metro-02 (D2)	21369	19249	-9.9%
Eastway-06 (C2)	26990	25617	-5.1%
North Tryon-07 (D3)	22556	20949	-7.1%
North-11 (C1)	42889	40315	-6.0%
Hickory Grove-12 (C3)	32481	31433	-3.2%
Providence-16 (B1)	25128	23611	-6.0%
Independence-17 (B3)	32273	29250	-9.4%
Steele Creek-21 (A1)	31000	29123	-6.1%
South-22 (B2)	33208	30645	-7.7%
Westover-26 (A2)	24262	23347	-3.8%
Freedom-27 (A3)	34855	33986	-2.5%
Total	348672	328744	-5.7%

¹These totals exclude duplicate and cancelled calls for service; they include calls handled by the Crime Reporting Unit as well as by division field officers, detectives and other CMPD staff.

²Calls where the location could not be assigned to one of the divisions are not included in this chart.

Citizen-Initiated Calls for Service¹ by Month
Charlotte-Mecklenburg Police Department: 2004-2005



¹These totals exclude duplicate and cancelled calls for service; they include calls handled by the Crime Reporting Unit as well as by division field officers, detectives and other CMPD staff.

Uniform Crime Reporting Procedures

The Charlotte-Mecklenburg Police Department reports offense and arrest statistics in accordance with standard Uniform Crime Reporting (UCR) guidelines. UCR policy states that any adjustments to previous months can be made on the current month's report:

...In tabulating crime counts, an agency may find that offense totals for past months require adjustments due to developments in the investigation or other handling of the matter. It may be necessary to adjust totals reported to UCR for the past month or prior months. Needed adjustments can be made on the current month's report and do not affect the reliability of the figures in that such adjustments tend to equalize each other from month to month over a period of time.

- *Uniform Crime Reporting Handbook*, FBI, 1984, p. 42-43

We are required to report crime monthly to the UCR program, and we do therefore make an effort to process monthly changes in a timely manner. However, occasionally due to the review and processing required for reclassifying, unbounding or clearing cases, the current month's totals may reflect the processing of a backlog of these changes from previous months.

Users of the data are cautioned that conclusions about substantial changes in crime trends or in clearance rates based on only a single month's data or trend may reflect some of these adjustments. For this reason, in addition to the monthly and year-to-date trends on Page 1, the monthly report routinely includes a comparison for the previous 12 months (p. 4), as well as graphs that provide seasonal/monthly comparisons over a five-year period (p. 5-8).

UCR Definitions and Terms:

Index Crime: the eight offenses that the national UCR program tracks on a yearly basis to gauge trends in the extent of crime, despite differences among state and local criminal statutes. These offenses were selected on the basis of several factors: seriousness, frequency of occurrence, pervasiveness in all geographic areas, and/or likelihood of being reported to law enforcement.

Violent Index: includes the offenses of murder/non-negligent manslaughter, rape, robbery, and aggravated assault

Property Index: includes the offenses of burglary, larceny, vehicle theft and arson

Murder/non-negligent manslaughter: the willful killing of one human being by another

Rape: the carnal knowledge of a female forcibly and against her will [Note: This offense does not include other sex offenses or statutory (non-forcible) rape.]

Robbery: the taking or attempt to take anything of value from the care, custody, or control of a person or persons by force, threat of force or violence, or by putting the victim in fear.

Aggravated assault: an unlawful attack by one person on another for the purpose of inflicting severe or aggravated bodily injury; includes 1) all assaults in which a weapon of any type is used or is threatened to be used and/or 2) all assaults where serious injury occurs.

Burglary: the unlawful entry or attempted entry of a structure to commit a felony or a theft

Larceny-Theft: the unlawful taking (or attempt), carrying, leading, or riding away of property from the possession or constructive possession of another [Note: Larceny/theft of a motor vehicle is classed separately.]

Vehicle Theft: the theft or attempted theft of a motor vehicle (a self-propelled vehicle that runs on land and not on rails, excluding farm and construction equipment)

Arson: the willful or malicious burning or attempt to burn, with or without intent to defraud, a structure, motor vehicle, personal property of another, etc.

Hierarchy rule: For cases involving multiple-offenses, the incident is classified and counted based on the highest offense on a hierarchy of crimes established by UCR. For example, for an incident involving a rape and a burglary, the incident would be counted in the rape category because rape is higher than burglary on the hierarchy.

Clearance: A case is considered cleared when either at least one arrest is made for the offense or when an offender's identity is established by investigation but the offender will not be arrested for reasons outside law enforcement control (offender dies, victim refuses to prosecute, district attorney declines prosecution, extradition is refused, etc.).

Unfounding: A case is "unfounded" and subtracted from the crime counts when investigation establishes that the incident did not actually occur or that the actions within the incident are not criminal based on current law.

For additional information, please consult the *UCR Handbook* on the FBI website at <http://www.fbi.gov/ucr/ucr.htm>.

This report was compiled by the Research, Planning, and Analysis Division with assistance of volunteer Doris Bowen.

We make an effort to present the most accurate information available at the time this report is published. Please notify the Research, Planning, and Analysis office if you have any questions about the data in this report or about an error that was missed in proofing the report.

The division names adopted in 2003 are used in this report; the old district designations are shown in parentheses.