



**CHARLOTTE-MECKLENBURG POLICE DEPARTMENT
MONTHLY SUMMARY REPORT
APRIL, 2006**

**Darrel Stephens
Chief of Police**

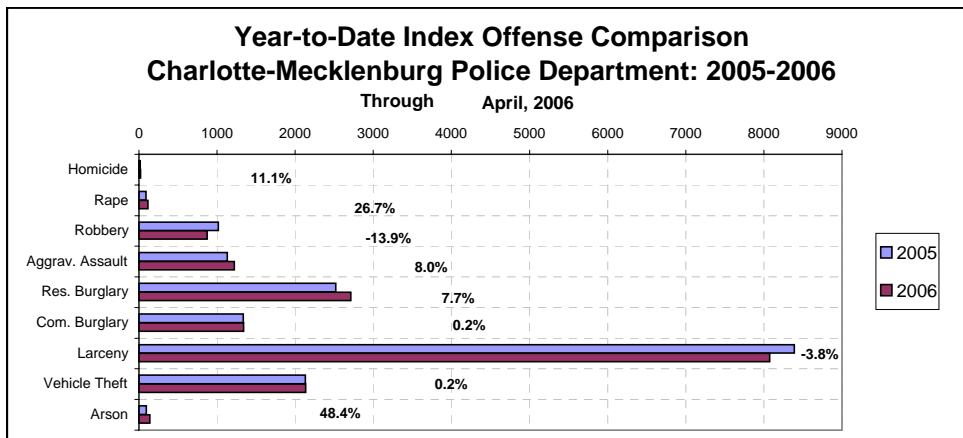
INDEX OFFENSES REPORTED TO CHARLOTTE-MECKLENBURG POLICE DEPARTMENT

April, 2006 INDEX OFFENSES	# THIS MONTH	% OF ALL INDEX	# LAST MONTH	MONTHLY % CHANGE	SAME MONTH LAST YEAR	MONTHLY % CHANGE	THIS YEAR TO DATE	LAST YEAR TO DATE	ANNUAL % CHANGE
HOMICIDE (MURDER & NON- NEGLIGENT MANSLAUGHTER)	4	0.1%	5	-20.0%	4	0.0%	20	18	11.1%
RAPE TOTAL	33	0.8%	34	-2.9%	27	22.2%	114	90	26.7%
ACTUAL	30	0.7%	30	0.0%	26	15.4%	103	86	19.8%
ATTEMPT	3	0.1%	4	-25.0%	1	200.0%	11	4	175.0%
ROBBERY TOTAL	258	5.9%	226	14.2%	262	-1.5%	874	1015	-13.9%
ARMED	194	4.4%	186	4.3%	213	-8.9%	704	816	-13.7%
STRONG-ARM	64	1.5%	40	60.0%	49	30.6%	170	199	-14.6%
AGGRAVATED ASSAULT TOTAL	373	8.6%	304	22.7%	260	43.5%	1220	1130	8.0%
BURGLARY TOTAL	965	22.1%	1087	-11.2%	1031	-6.4%	4070	3853	5.6%
RESIDENTIAL	668	15.3%	729	-8.4%	675	-1.0%	2712	2518	7.7%
COMMERCIAL	277	6.4%	358	-22.6%	356	-22.2%	1338	1335	0.2%

FORCE	763	17.5%	887	-14.0%	849	-10.1%	3323	3157	5.3%
NO FORCE	128	2.9%	124	3.2%	113	13.3%	446	430	3.7%
ATTEMPT	74	1.7%	76	-2.6%	69	7.2%	301	266	13.2%
LARCENY TOTAL	2141	49.1%	2031	5.4%	2203	-2.8%	8074	8389	-3.8%
\$200 AND OVER	1100	25.2%	1017	8.2%	1073	2.5%	4095	4143	-1.2%
\$50 TO \$200	402	9.2%	380	5.8%	424	-5.2%	1524	1635	-6.8%
UNDER \$50	639	14.6%	634	0.8%	706	-9.5%	2455	2611	-6.0%

FROM AUTO	1097	25.1%	1029	6.6%	1073	2.2%	4144	4233	-2.1%
BICYCLE	11	0.3%	14	-21.4%	12	-8.3%	41	41	0.0%
SHOPLIFTING	222	5.1%	229	-3.1%	226	-1.8%	867	816	6.3%
OTHERS	811	18.6%	759	6.9%	892	-9.1%	3022	3299	-8.4%
VEHICLE THEFT TOTAL	551	12.6%	540	2.0%	619	-11.0%	2136	2132	0.2%
ARSON TOTAL	37	0.8%	36	2.8%	27	37.0%	138	93	48.4%
TOTALS	4362	100.0%	4263	2.3%	4433	-1.6%	16646	16720	-0.4%
VIOLENT PROPERTY	668 3694	15.3% 84.7%	569 3694	17.4% 0.0%	553 3880	20.8% -4.8%	2228 14418	2253 14467	-1.1% -0.3%

NOTE: These totals include offenses reported to the Charlotte-Mecklenburg Police Department in accordance with the Uniform Crime Reporting Program. Totals for homicide do not include cases investigated by the police but classed by UCR guidelines as negligent manslaughter or as "justifiable homicide."

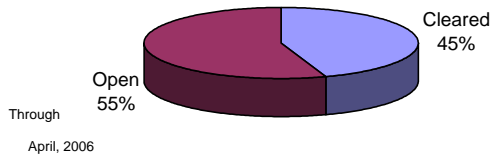


INDEX CLEARANCES REPORTED BY THE CHARLOTTE-MECKLENBURG POLICE DEPARTMENT

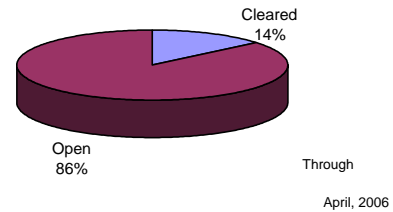
April, 2006 INDEX CLEARANCES	THIS MONTH:		LAST MONTH:		SAME MO. LAST YR:		THIS YEAR TO DATE:		LAST YEAR TO DATE:	
	NO.	%	NO.	%	NO.	%	NO.	%	NO.	%
MURDER & NON-NEGLIGENT MANSLAUGHTER ¹	5	125.0%	3	60.0%	3	75.0%	13	65.0%	10	55.6%
RAPE TOTAL	17	51.5%	26	76.5%	21	77.8%	80	70.2%	83	92.2%
ACTUAL	15	50.0%	22	73.3%	30	115.4%	72	69.9%	81	94.2%
ATTEMPT	2	66.7%	4	100.0%	1	100.0%	8	72.7%	12	300.0%
ROBBERY TOTAL	54	20.9%	56	24.8%	61	23.3%	297	34.0%	251	24.7%
ARMED	39	20.1%	49	26.3%	44	20.7%	233	33.1%	194	23.8%
STRONG-ARM	15	23.4%	7	17.5%	17	34.7%	64	37.6%	57	28.6%
AGGRAVATED ASSAULT TOTAL	119	31.9%	149	49.0%	158	60.8%	608	49.8%	578	51.2%
BURGLARY TOTAL	83	8.6%	77	7.1%	79	7.7%	343	8.4%	476	12.4%
RESIDENTIAL	67	10.0%	58	8.0%	63	9.3%	269	9.9%	384	15.3%
COMMERCIAL	16	5.8%	19	5.3%	16	4.5%	74	5.5%	92	6.9%
LARCENY TOTAL	290	13.5%	352	17.3%	322	14.6%	1336	16.5%	1278	15.2%
FROM AUTO	47	4.3%	36	3.5%	43	4.0%	161	3.9%	169	4.0%
BICYCLE	0	0.0%	0	0.0%	1	8.3%	3	7.3%	7	17.1%
SHOPLIFTING	137	61.7%	158	69.0%	152	67.3%	578	66.7%	561	68.8%
OTHERS	106	13.1%	158	20.8%	126	14.1%	594	19.7%	541	16.4%
VEHICLE THEFT TOTAL	62	11.3%	50	9.3%	82	13.2%	272	12.7%	354	16.6%
ARSON TOTAL	8	21.6%	7	19.4%	2	7.4%	36	26.1%	15	16.1%
TOTALS	638	14.6%	720	16.9%	728	16.4%	2985	17.9%	3045	18.2%
VIOLENT PROPERTY	195	29.2%	234	41.1%	243	43.9%	998	44.8%	922	40.9%
	443	12.0%	486	13.2%	485	12.5%	1987	13.8%	2123	14.7%

¹NOTE : Clearances are reported in accordance with Uniform Crime Report guidelines. Since clearances are not counted for UCR until they are entered in the Records Management system, any delays in entry of the documentation may result in some clearances being reported later in succeeding months. Clearances for homicides from years prior to the automated KBCOPS Records and Case Management modules were counted in the December clearances.

**Year-to-Date Violent Index Clearance Rate
Charlotte-Mecklenburg Police Department: 2006**

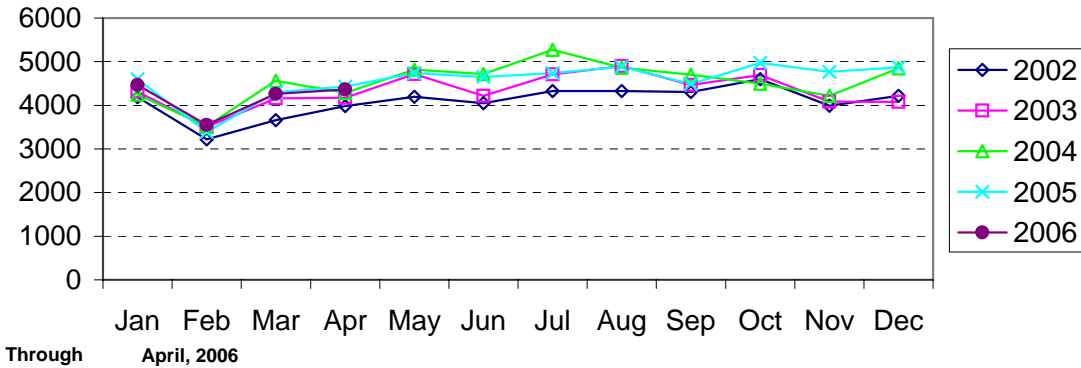


**Year-to-Date Property Index Clearance Rate
Charlotte-Mecklenburg Police Department: 2006**

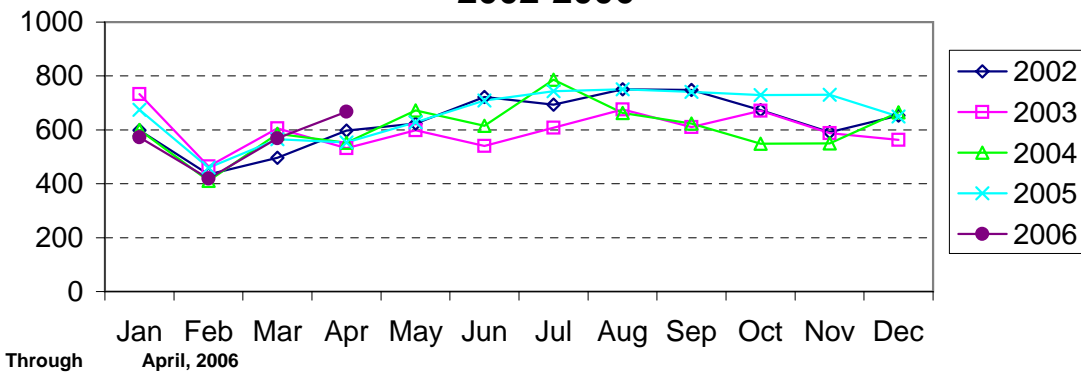


Clearance rates for crime reporting are calculated by dividing the number of crimes cleared during a designated time span by the number of crimes reported in the same period and converting the result to a percentage (multiplying by 100). Since cases from previous reporting periods can be cleared during the designated time span, the rate may be higher than 100%.

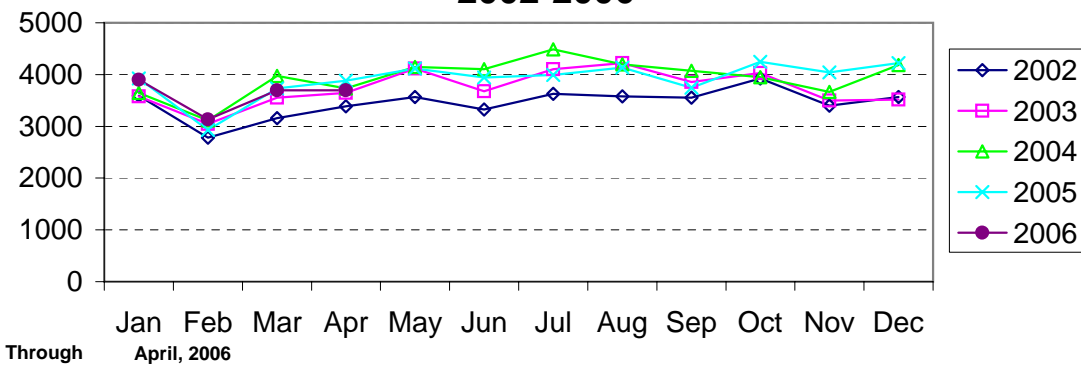
Index Offenses Reported by Month Charlotte-Mecklenburg Police Department: 2002-2006



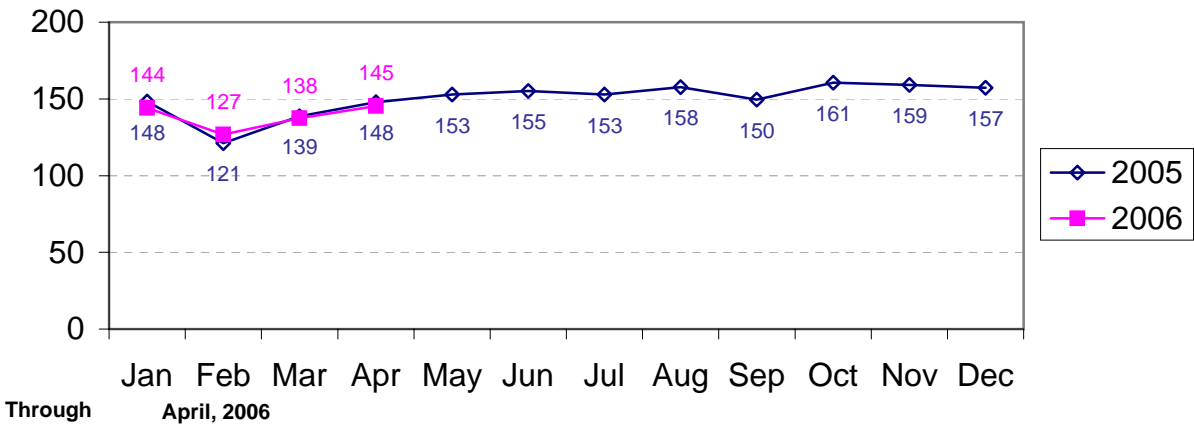
Violent Index Offenses Reported by Month Charlotte-Mecklenburg Police Department: 2002-2006



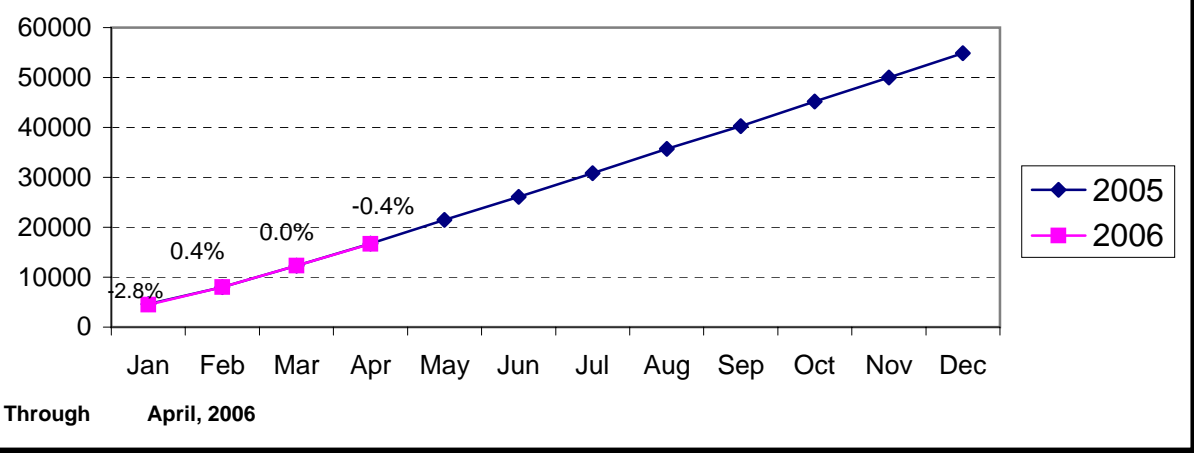
Property Index Offenses Reported by Month Charlotte-Mecklenburg Police Department: 2002-2006



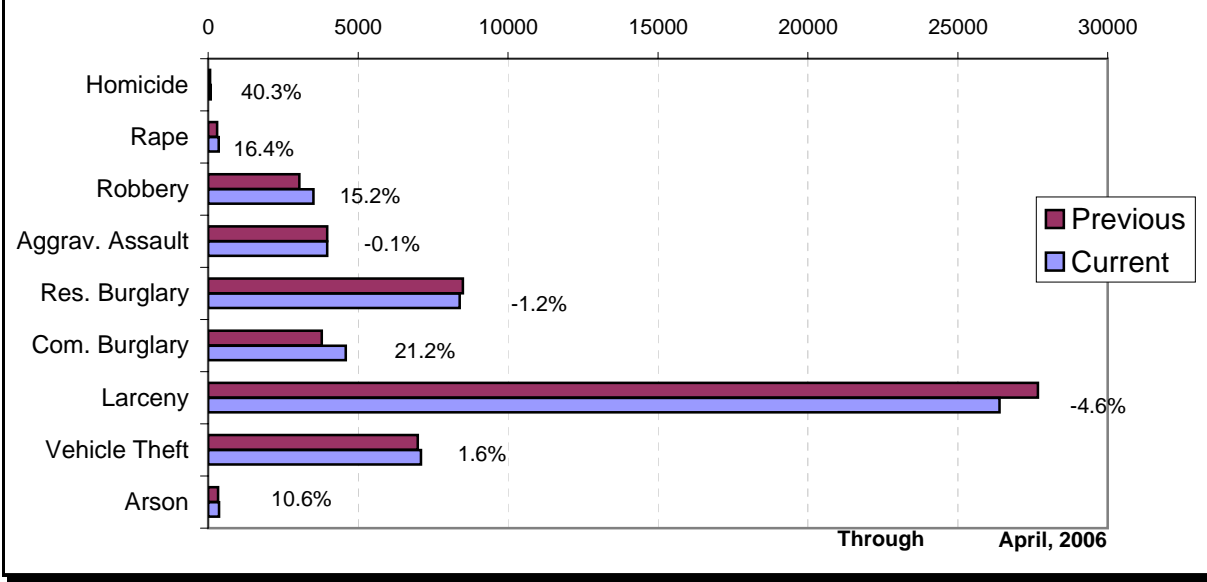
Index Offense Per Day Average by Month Charlotte-Mecklenburg Police Department: 2005-2006



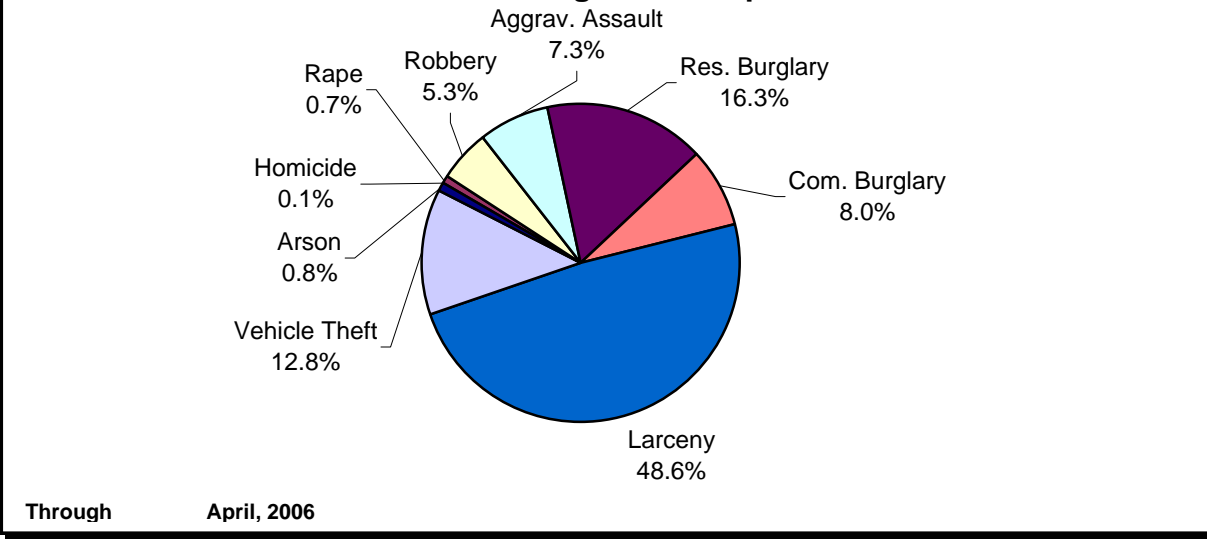
Index Offenses Year-to-Date Cumulative Totals Charlotte-Mecklenburg Police Department: 2005-2006



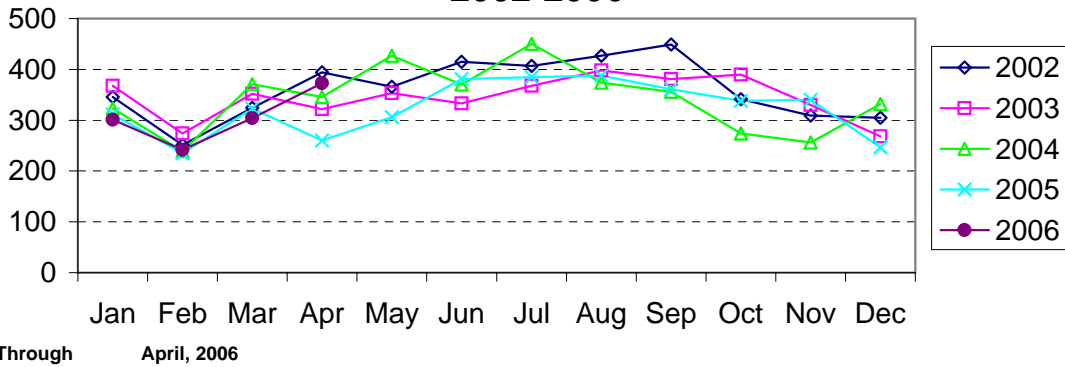
Index Offenses in Current & Previous 12 Month Periods Charlotte-Mecklenburg Police Department



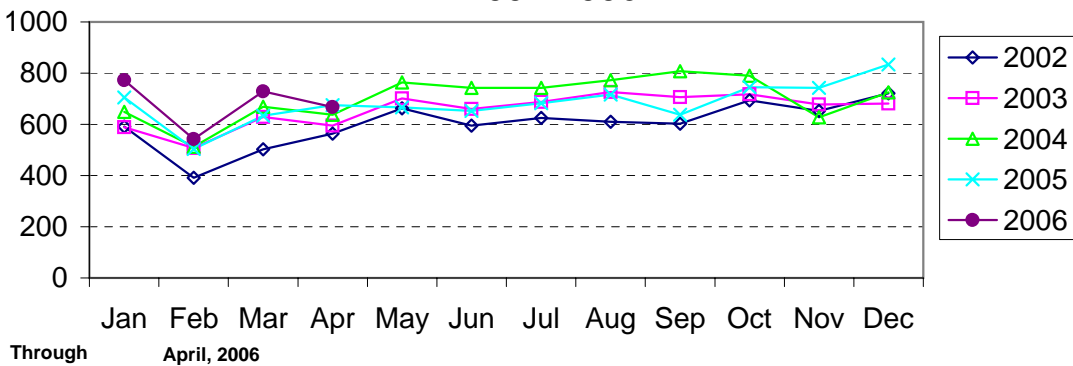
Year-to-Date Index Offenses by Type Charlotte-Mecklenburg Police Department: 2006



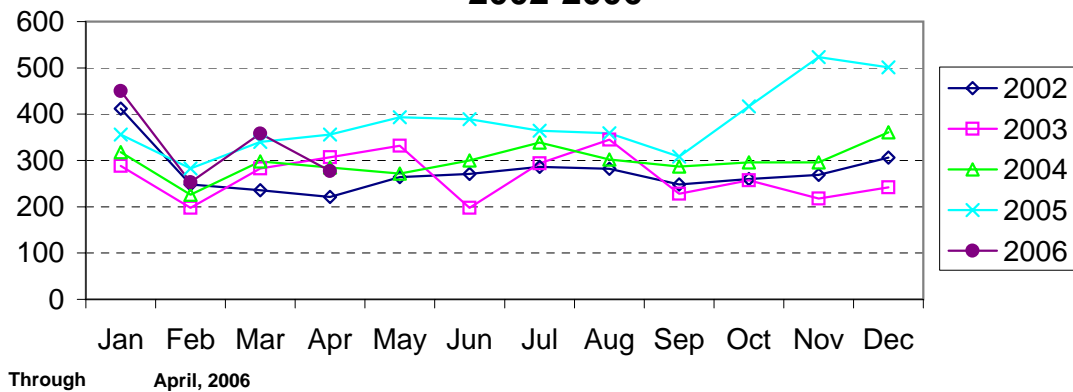
Aggravated Assault Reported by Month Charlotte-Mecklenburg Police Department: 2002-2006



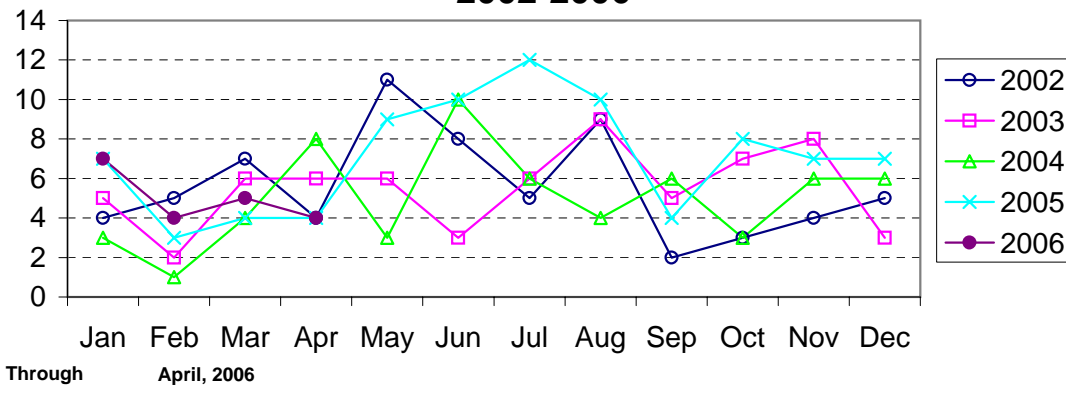
Residential Burglary Reported by Month Charlotte-Mecklenburg Police Department: 2002-2006



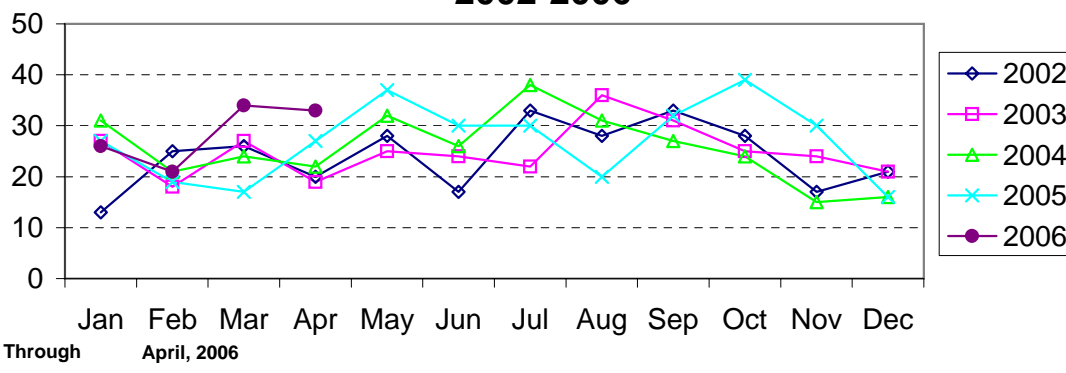
Commercial Burglary Reported by Month Charlotte-Mecklenburg Police Department: 2002-2006



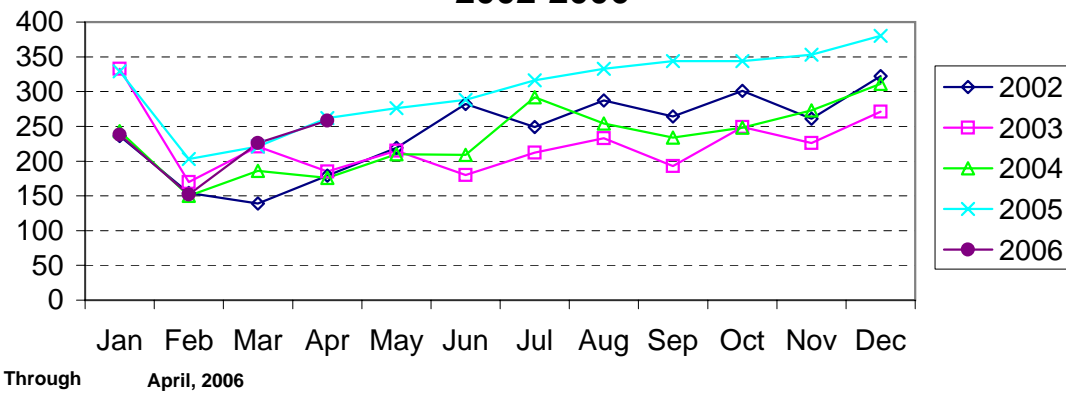
Homicide Reported by Month Charlotte-Mecklenburg Police Department: 2002-2006



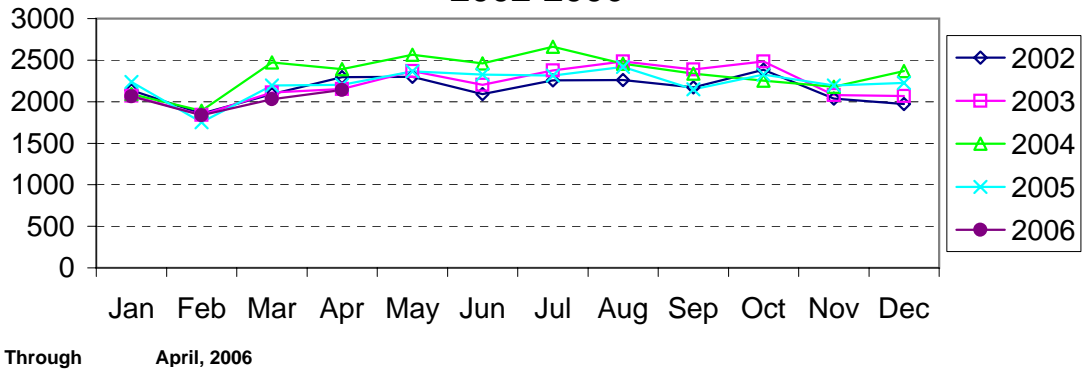
Rape Reported by Month Charlotte-Mecklenburg Police Department: 2002-2006



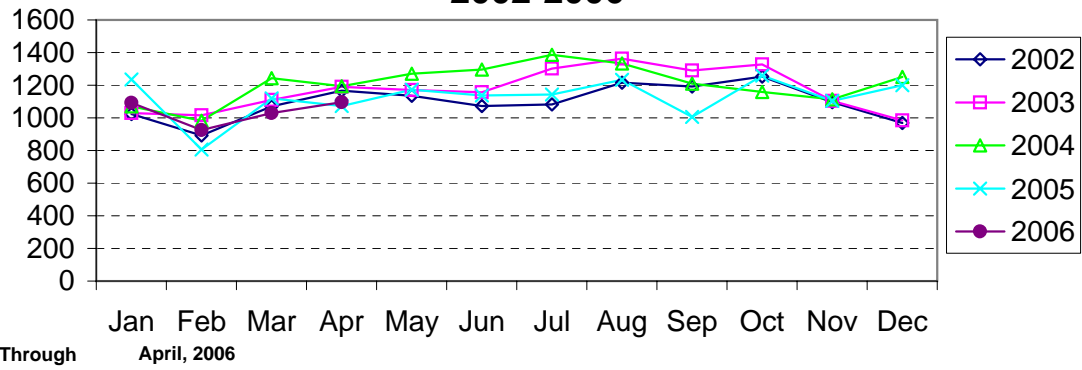
Robbery Reported by Month Charlotte-Mecklenburg Police Department: 2002-2006



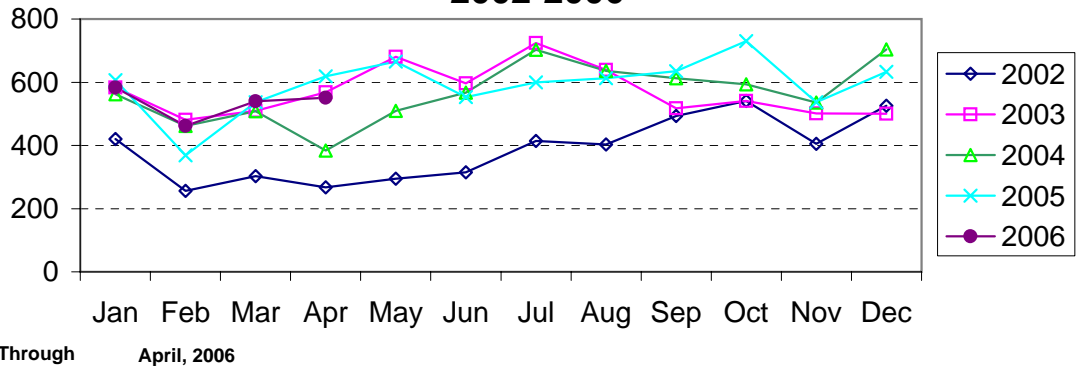
Larceny Reported by Month Charlotte-Mecklenburg Police Department: 2002-2006



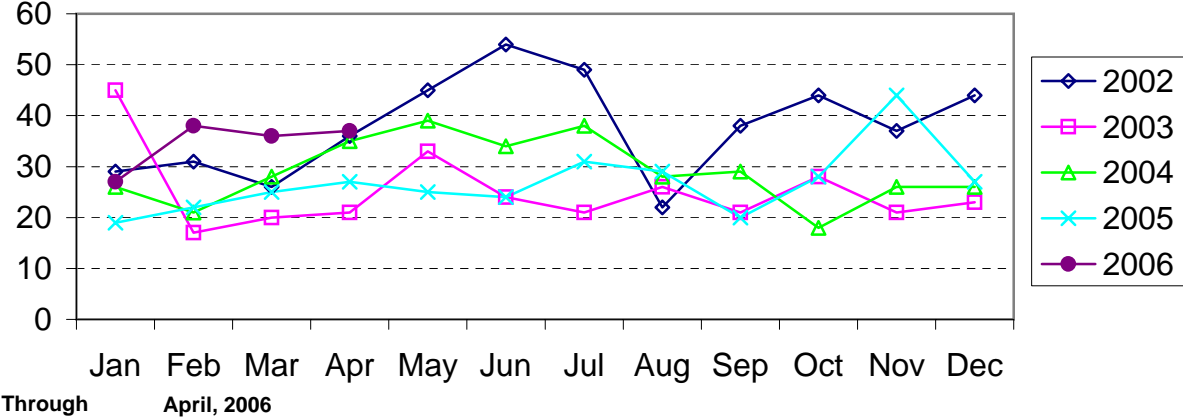
Larceny from Vehicle Reported by Month Charlotte-Mecklenburg Police Department: 2002-2006



Vehicle Theft Reported by Month Charlotte-Mecklenburg Police Department: 2002-2006



Arson Reported by Month Charlotte-Mecklenburg Police Department: 2002-2006



Index Offenses Reported by Division and Service Area of Occurrence									
West Service Area: April 2005-2006									
INDEX_CATEGORIES	Westover (A2)			Freedom (A3)			West Service Area		
	2005	2006	% Change	2005	2006	% Change	2005	2006	% Change
MURDER & NON-NEGLIGENT MANSLAUGHTER	1	0	-100.0%	2	1	-50.0%	3	1	-66.7%
RAPE	8	11	37.5%	9	10	11.1%	17	21	23.5%
ACTUAL	8	11	37.5%	9	10	11.1%	17	21	23.5%
ATTEMPTED	0	0	NA	0	0	NA	0	0	NA
ROBBERY	93	81	-12.9%	136	100	-26.5%	229	181	-21.0%
ARMED	73	66	-9.6%	119	83	-30.3%	192	149	-22.4%
STRONG-ARM	20	15	-25.0%	17	17	0.0%	37	32	-13.5%
AGGRAVATED ASSAULT	120	176	46.7%	145	158	9.0%	265	334	26.0%
BURGLARY	285	315	10.5%	529	512	-3.2%	814	827	1.6%
RESIDENTIAL	142	223	57.0%	329	326	-0.9%	471	549	16.6%
COMMERCIAL	143	92	-35.7%	200	186	-7.0%	343	278	-19.0%
LARCENY	535	518	-3.2%	775	843	8.8%	1310	1361	3.9%
FROM AUTO	249	247	-0.8%	343	388	13.1%	592	635	7.3%
BICYCLE	0	3	NA	4	1	-75.0%	4	4	0.0%
SHOPLIFTING	43	63	46.5%	79	100	26.6%	122	163	33.6%
OTHERS	243	205	-15.6%	349	354	1.4%	592	559	-5.6%
VEHICLE THEFT	147	187	27.2%	217	226	4.1%	364	413	13.5%
ARSON	6	8	33.3%	9	19	111.1%	15	27	80.0%
TOTALS	1195	1296	8.5%	1822	1869	2.6%	3017	3165	4.9%
VIOLENT	222	268	20.7%	292	269	-7.9%	514	537	4.5%
PROPERTY	973	1028	5.7%	1530	1600	4.6%	2503	2628	5.0%

Index Offenses Reported by Division and Service Area of Occurrence									
Southeast Service Area: April 2005-2006									
INDEX_CATEGORIES	Providence (B1)			Independence (B3)			Southeast Service Area		
	2005	2006	% Change	2005	2006	% Change	2005	2006	% Change
MURDER & NON-NEGLIGENT MANSLAUGHTER	1	2	100.0%	0	0	NA	1	2	100.0%
RAPE	4	7	75.0%	12	12	0.0%	16	19	18.8%
ACTUAL	4	6	50.0%	11	10	-9.1%	15	16	6.7%
ATTEMPTED	0	1	NA	1	2	100.0%	1	3	200.0%
ROBBERY	39	34	-12.8%	78	81	3.8%	117	115	-1.7%
ARMED	35	21	-40.0%	63	72	14.3%	98	93	-5.1%
STRONG-ARM	4	13	225.0%	15	9	-40.0%	19	22	15.8%
AGGRAVATED ASSAULT	39	46	17.9%	96	71	-26.0%	135	117	-13.3%
BURGLARY	261	244	-6.5%	328	343	4.6%	589	587	-0.3%
RESIDENTIAL	161	148	-8.1%	265	272	2.6%	426	420	-1.4%
COMMERCIAL	100	96	-4.0%	63	71	12.7%	163	167	2.5%
LARCENY	583	579	-0.7%	751	642	-14.5%	1334	1221	-8.5%
FROM AUTO	249	274	10.0%	418	296	-29.2%	667	570	-14.5%
BICYCLE	5	2	-60.0%	3	12	300.0%	8	14	75.0%
SHOPLIFTING	71	102	43.7%	79	88	11.4%	150	190	26.7%
OTHERS	258	201	-22.1%	251	246	-2.0%	509	447	-12.2%
VEHICLE THEFT	90	102	13.3%	247	210	-15.0%	337	312	-7.4%
ARSON	3	3	0.0%	15	8	-46.7%	18	11	-38.9%
TOTALS	1020	1017	-0.3%	1527	1367	-10.5%	2547	2384	-6.4%
VIOLENT	83	89	7.2%	186	164	-11.8%	269	253	-5.9%
PROPERTY	937	928	-1.0%	1341	1203	-10.3%	2278	2131	-6.5%

The data in the district breakdowns does not include a small number of offenses in which the offense location (or reporting location if offense location was unknown) was entered without one of the 12 valid division assignments. Districts are not equal in geographic size, demographics, zoning/development, and other factors that influence the rate of crimes committed in an area. Therefore, the comparison of raw offense totals across districts is **not** advisable.

Index Offenses Reported by Division and Service Area of Occurrence									
East Service Area: April 2005-2006									
INDEX_CATEGORIES	Eastway (C2)			North Tryon (D3)			East Service Area		
	2005	2006	% Change	2005	2006	% Change	2005	2006	% Change
MURDER & NON-NEGLIGENT MANSLAUGHTER	2	1	-50.0%	1	4	300.0%	3	5	66.7%
RAPE	9	8	-11.1%	5	4	-20.0%	14	12	-14.3%
ACTUAL	9	6	-33.3%	5	4	-20.0%	14	10	-28.6%
ATTEMPTED	0	2	NA	0	0	NA	0	2	NA
ROBBERY	132	80	-39.4%	97	79	-18.6%	229	159	-30.6%
ARMED	100	64	-36.0%	82	59	-28.0%	182	123	-32.4%
STRONG-ARM	32	16	-50.0%	15	20	33.3%	47	36	-23.4%
AGGRAVATED ASSAULT	80	56	-30.0%	100	132	32.0%	180	188	4.4%
BURGLARY	290	265	-8.6%	247	300	21.5%	537	565	5.2%
RESIDENTIAL	208	202	-2.9%	155	180	16.1%	363	382	5.2%
COMMERCIAL	82	63	-23.2%	95	120	26.3%	177	183	3.4%
LARCENY	729	589	-19.2%	413	334	-19.1%	1142	923	-19.2%
FROM AUTO	269	250	-7.1%	206	165	-19.9%	475	415	-12.6%
BICYCLE	5	4	-20.0%	2	2	0.0%	7	6	-14.3%
SHOPLIFTING	196	135	-31.1%	23	15	-34.8%	219	150	-31.5%
OTHERS	259	200	-22.8%	182	152	-16.5%	441	352	-20.2%
VEHICLE THEFT	140	176	25.7%	134	141	5.2%	274	317	15.7%
ARSON	8	3	-62.5%	4	14	250.0%	12	17	41.7%
TOTALS	1390	1178	-15.3%	1001	1008	0.7%	2391	2186	-8.6%
VIOLENT	223	145	-35.0%	203	219	7.9%	426	364	-14.6%
PROPERTY	1167	1033	-11.5%	798	789	-1.1%	1965	1822	-7.3%

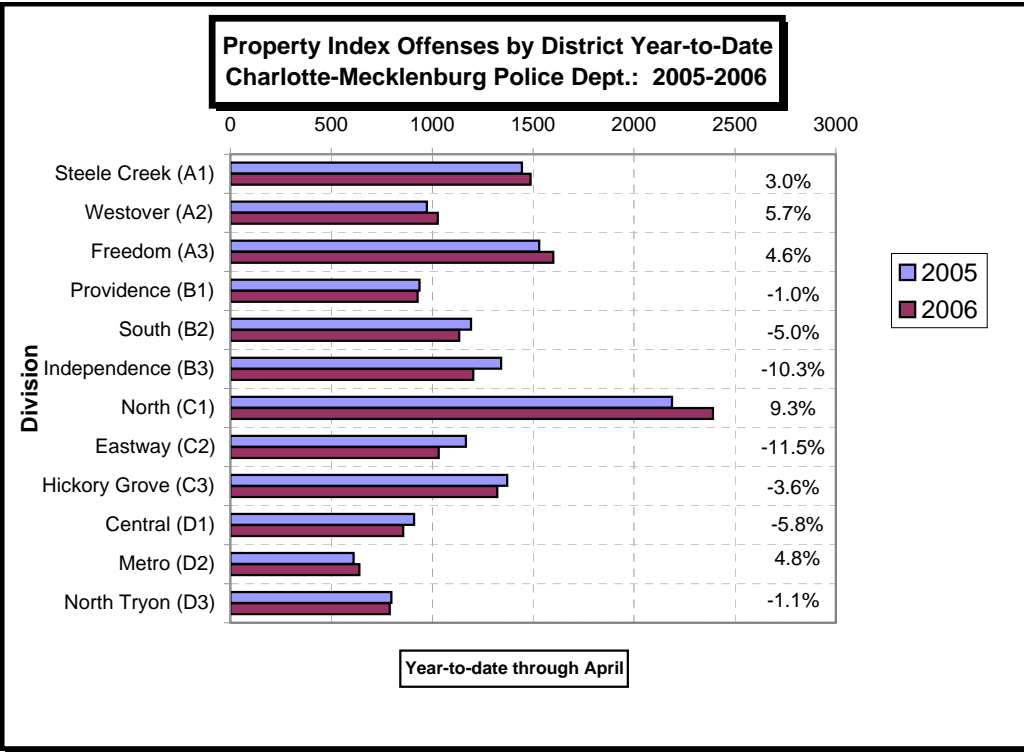
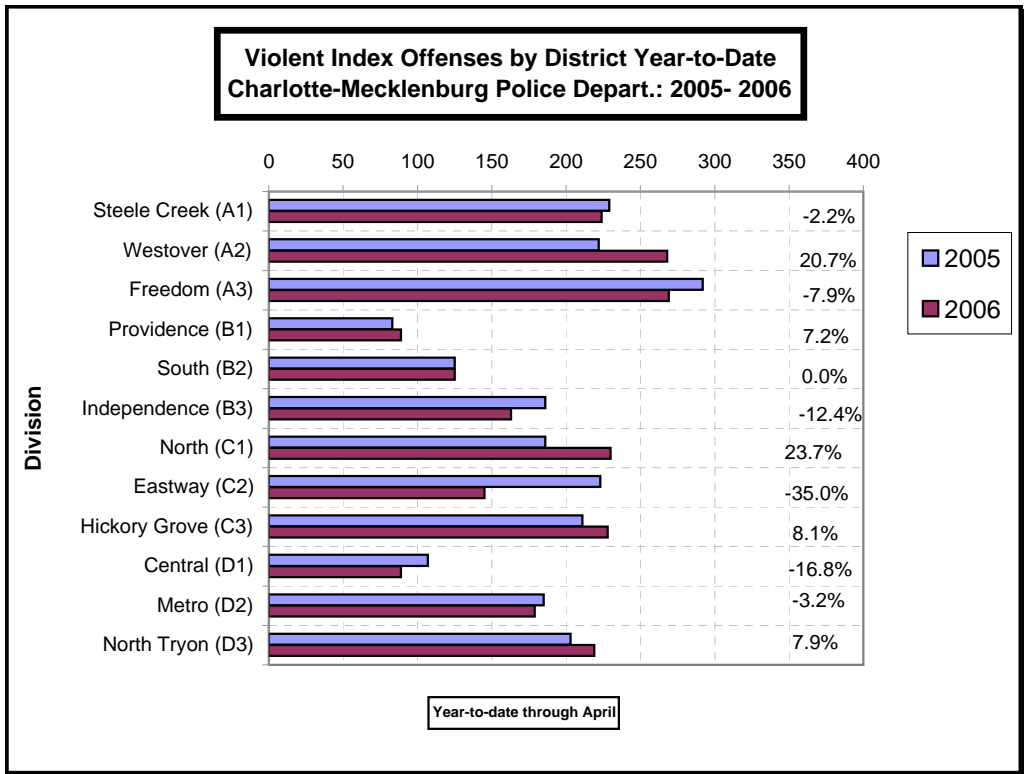
Index Offenses Reported by Division and Service Area of Occurrence									
South Service Area: April 2005-2006									
INDEX_CATEGORIES	Steele Creek (A1)			South (B2)			South Service Area		
	2005	2006	% Change	2005	2006	% Change	2005	2006	% Change
MURDER & NON-NEGLIGENT MANSLAUGHTER	0	3	NA	1	4	300.0%	1	7	600.0%
RAPE	8	14	75.0%	3	5	66.7%	11	19	72.7%
ACTUAL	8	12	50.0%	3	3	0.0%	11	15	36.4%
ATTEMPTED	0	2	NA	0	2	NA	0	4	NA
ROBBERY	95	93	-2.1%	63	44	-30.2%	158	137	-13.3%
ARMED	77	80	3.9%	55	36	-34.5%	132	116	-12.1%
STRONG-ARM	18	13	-27.8%	8	8	0.0%	26	21	-19.2%
AGGRAVATED ASSAULT	126	114	-9.5%	58	72	24.1%	184	186	1.1%
BURGLARY	279	319	14.3%	283	247	-12.7%	562	566	0.7%
RESIDENTIAL	155	208	34.2%	202	177	-12.4%	357	385	7.8%
COMMERCIAL	124	111	-10.5%	81	70	-13.6%	205	181	-11.7%
LARCENY	927	929	0.2%	762	739	-3.0%	1689	1668	-1.2%
FROM AUTO	504	510	1.2%	450	426	-5.3%	954	936	-1.9%
BICYCLE	2	2	0.0%	2	2	0.0%	4	4	0.0%
SHOPLIFTING	77	64	-16.9%	47	77	63.8%	124	141	13.7%
OTHERS	344	353	2.6%	263	234	-11.0%	607	587	-3.3%
VEHICLE THEFT	228	224	-1.8%	140	131	-6.4%	368	355	-3.5%
ARSON	10	15	50.0%	8	16	100.0%	18	31	72.2%
TOTALS	1673	1711	2.3%	1318	1258	-4.6%	2991	2969	-0.7%
VIOLENT	229	224	-2.2%	125	125	0.0%	354	349	-1.4%
PROPERTY	1444	1487	3.0%	1193	1133	-5.0%	2637	2620	-0.6%

The data in the district breakdowns does not include a small number of offenses in which the offense location (or reporting location if offense location was unknown) was entered without one of the 12 valid division assignments. Districts are not equal in geographic size, demographics, zoning/development, and other factors that influence the rate of crimes committed in an area. Therefore, the comparison of raw offense totals across districts is **not** advisable.

Index Offenses Reported by Division and Service Area of Occurrence									
Northeast Service Area: April 2005-2006									
INDEX_CATEGORIES	North (C1)			Hickory Grove (C3)			Northeast Service Area		
	2005	2006	% Change	2005	2006	% Change	2005	2006	% Change
MURDER & NON-NEGLIGENT MANSLAUGHTER	3	1	-66.7%	4	2	-50.0%	7	3	-57.1%
RAPE	13	17	30.8%	8	11	37.5%	21	28	33.3%
ACTUAL	11	17	54.5%	7	10	42.9%	18	27	50.0%
ATTEMPTED	2	0	-100.0%	1	1	0.0%	3	1	-66.7%
ROBBERY	67	109	62.7%	86	86	0.0%	153	195	27.5%
ARMED	55	99	80.0%	66	68	3.0%	121	167	38.0%
STRONG-ARM	12	10	-16.7%	20	18	-10.0%	32	28	-12.5%
AGGRAVATED ASSAULT	103	103	0.0%	113	129	14.2%	216	232	7.4%
BURGLARY	538	653	21.4%	476	560	17.6%	1014	1213	19.6%
RESIDENTIAL	387	408	5.4%	305	404	32.5%	692	812	17.3%
COMMERCIAL*	151	245	62.3%	171	156	-8.8%	322	401	24.5%
LARCENY	1318	1436	9.0%	621	552	-11.1%	1939	1988	2.5%
FROM AUTO	730	833	14.1%	321	304	-5.3%	1051	1137	8.2%
BICYCLE	6	6	0.0%	6	4	-33.3%	12	10	-16.7%
SHOPLIFTING	122	149	22.1%	54	40	-25.9%	176	189	7.4%
OTHERS	460	448	-2.6%	240	204	-15.0%	700	652	-6.9%
VEHICLE THEFT	317	281	-11.4%	266	194	-27.1%	583	475	-18.5%
ARSON	15	21	40.0%	9	16	77.8%	24	37	54.2%
TOTALS	2374	2621	10.4%	1583	1550	-2.1%	3957	4171	5.4%
VIOLENT	186	230	23.7%	211	228	8.1%	397	458	15.4%
PROPERTY	2188	2391	9.3%	1372	1322	-3.6%	3560	3713	4.3%

Index Offenses Reported by Division and Service Area of Occurrence									
Central Service Area: April 2005-2006									
INDEX_CATEGORIES	Central (D1)			Metro (D2)			Central Service Area		
	2005	2006	% Change	2005	2006	% Change	2005	2006	% Change
MURDER & NON-NEGLIGENT MANSLAUGHTER	0	1	NA	3	1	-66.7%	3	2	-33.3%
RAPE	8	8	0.0%	2	7	250.0%	10	15	50.0%
ACTUAL	7	7	0.0%	3	7	133.3%	10	14	40.0%
ATTEMPTED	1	1	0.0%	-1	0	-100.0%	0	1	NA
ROBBERY	58	41	-29.3%	71	46	-35.2%	129	87	-32.6%
ARMED	35	29	-17.1%	56	27	-51.8%	91	56	-38.5%
STRONG-ARM	23	12	-47.8%	15	19	26.7%	38	31	-18.4%
AGGRAVATED ASSAULT	41	39	-4.9%	109	125	14.7%	150	164	9.3%
BURGLARY	127	109	-14.2%	209	199	-4.8%	336	308	-8.3%
RESIDENTIAL	41	54	31.7%	170	126	-25.9%	211	180	-14.7%
COMMERCIAL	86	55	-36.0%	39	73	87.2%	125	128	2.4%
LARCENY	694	600	-13.5%	281	310	10.3%	975	910	-6.7%
FROM AUTO	378	302	-20.1%	116	148	27.6%	494	450	-8.9%
BICYCLE	3	2	-33.3%	3	1	-66.7%	6	3	-50.0%
SHOPLIFTING	14	24	71.4%	11	10	-9.1%	25	34	36.0%
OTHERS	299	272	-9.0%	151	151	0.0%	450	423	-6.0%
VEHICLE THEFT	89	137	53.9%	114	126	10.5%	203	263	29.6%
ARSON	0	11	NA	6	4	-33.3%	6	15	150.0%
TOTALS	1017	946	-7.0%	795	818	2.9%	1812	1764	-2.6%
VIOLENT	107	89	-16.8%	185	179	-3.2%	292	268	-8.2%
PROPERTY	910	857	-5.8%	610	639	4.8%	1520	1496	-1.6%

The data in the district breakdowns does not include a small number of offenses in which the offense location (or reporting location if offense location was unknown) was entered without one of the 12 valid division assignments. Districts are not equal in geographic size, demographics, zoning/development, and other factors that influence the rate of crimes committed in an area. Therefore, the comparison of raw offense totals across districts is **not** advisable.



The data in the district breakdowns does not include a small number of offenses in which the offense location (or reporting location if offense location was unknown) was entered without one of the 12 valid division assignments. Districts are not equal in geographic size, demographics, zoning/development, and other factors that influence the rate of crimes committed in an area. Therefore, the comparison of raw offense totals across districts is **not** advisable.

Arrests by Charlotte-Mecklenburg Police Department
Year-To-Date: 2005-2006
(Through April)

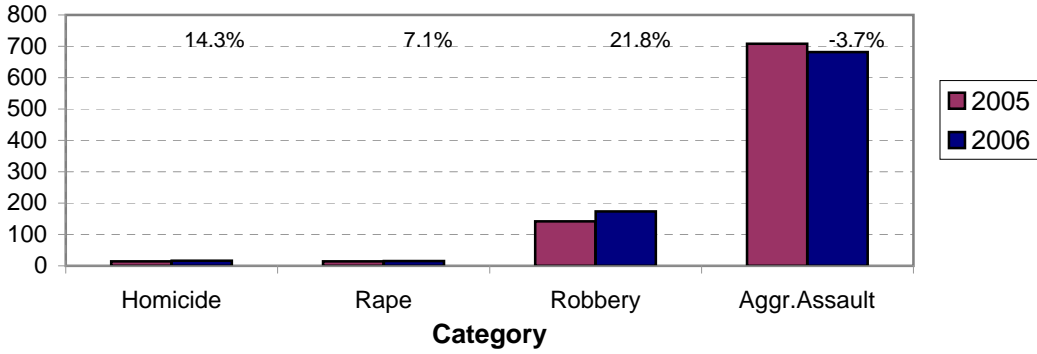
CATEGORY	ADULTS (AGE 18 & OLDER):			JUVENILES (UNDER 18):			TOTAL ARRESTS:		
	2005 Y-T-D	2006 Y-T-D	% CHANGE	2005 Y-T-D	2006 Y-T-D	% CHANGE	2005 Y-T-D	2006 Y-T-D	% CHANGE
Murder/Non-Negligent Manslaughter	13	16	23.1%	1	0	-100.0%	14	16	14.3%
Negligent & Vehicular Manslaughter	3	1	-66.7%	0	0	NA	3	1	-66.7%
Rape	14	10	-28.6%	0	5	NA	14	15	7.1%
Robbery	106	122	15.1%	36	51	41.7%	142	173	21.8%
Aggravated Assault	611	567	-7.2%	97	115	18.6%	708	682	-3.7%
Burglary	211	227	7.6%	75	65	-13.3%	286	292	2.1%
Larceny	513	450	-12.3%	153	172	12.4%	666	622	-6.6%
Vehicle Theft	37	28	-24.3%	23	28	21.7%	60	56	-6.7%
Non-Aggravated Assault	623	631	1.3%	279	254	-9.0%	902	885	-1.9%
Arson	1	6	500.0%	5	13	160.0%	6	19	216.7%
Forgery/Counterfiet	54	53	-1.9%	2	0	-100.0%	56	53	-5.4%
Fraud	179	220	22.9%	0	4	NA	179	224	25.1%
Embezzlement	21	31	47.6%	1	2	100.0%	22	33	50.0%
Stolen Property	138	187	35.5%	35	44	25.7%	173	231	33.5%
Vandalism	65	90	38.5%	58	88	51.7%	123	178	44.7%
Weapons	185	266	43.8%	32	21	-34.4%	217	287	32.3%
Prostitution	52	70	34.6%	1	1	0.0%	53	71	34.0%
Sex Offenses	58	59	1.7%	7	5	-28.6%	65	64	-1.5%
Drugs	886	1084	22.3%	94	139	47.9%	980	1223	24.8%
Gambling	1	2	100.0%	0	0	NA	1	2	100.0%
Offenses vs. Family	4	3	-25.0%	0	0	NA	4	3	-25.0%
DUI	686	687	0.1%	5	6	20.0%	691	693	0.3%
Liquor	43	58	34.9%	4	0	-100.0%	47	58	23.4%
Disorder.Conduct	166	183	10.2%	136	130	-4.4%	302	313	3.6%
Other Non-Traffic	2586	2989	15.6%	251	351	39.8%	2837	3340	17.7%
VIOLENT INDEX¹	744	715	-3.9%	134	171	27.6%	878	886	0.9%
PROPERTY INDEX²	762	711	-6.7%	256	278	8.6%	1018	989	-2.8%
INDEX SUBTOTAL	1506	1426	-5.3%	390	449	15.1%	1896	1875	-1.1%
PART 2 SUBTOTAL³	5750	6614	15.0%	905	1045	15.5%	6655	7659	15.1%
TOTAL	7256	8040	10.8%	1295	1494	15.4%	8551	9534	11.5%

¹Violent Index includes murder and non-negligent manslaughter, rape, robbery, and aggravated assault.

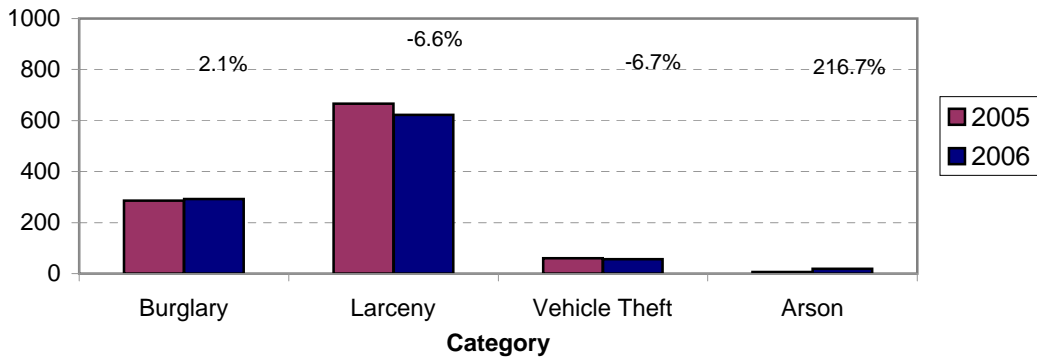
²Property Index includes burglary, larceny, vehicle theft, and arson.

³Part 2 crimes include crime categories not counted in the Index totals.

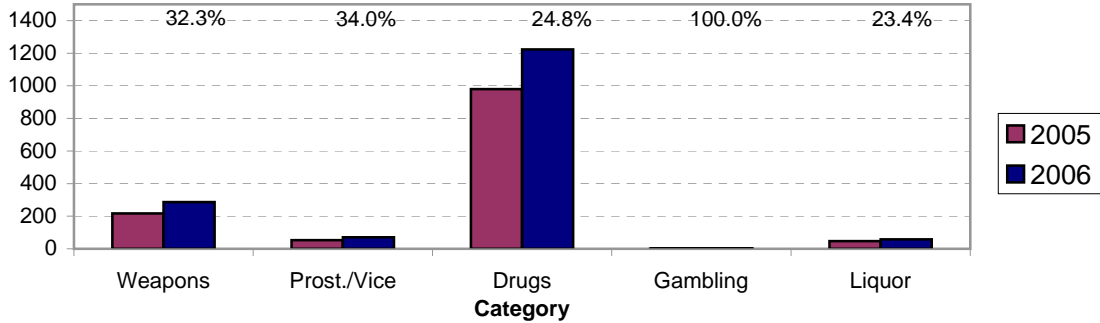
**Violent Index Arrests Year-to-Date
Charlotte-Mecklenburg Police Department: 2005-2006
(Through April)**



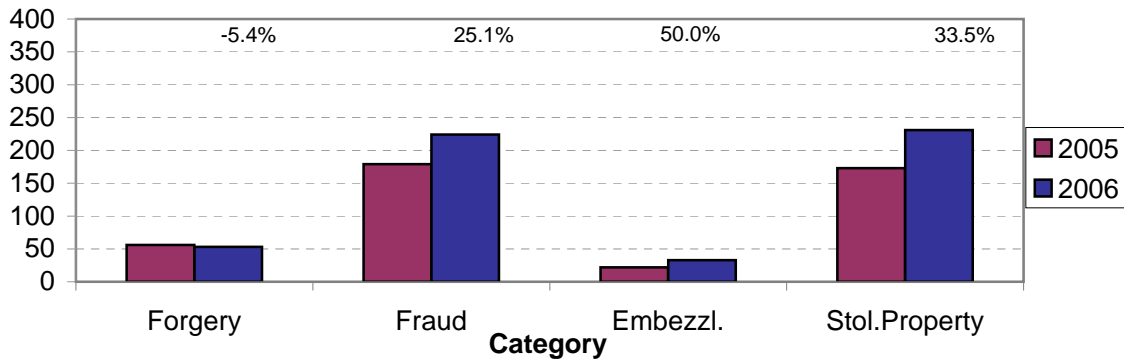
**Property Index Arrests Year-to-Date
Charlotte-Mecklenburg Police Department: 2004-2005
(Through April)**



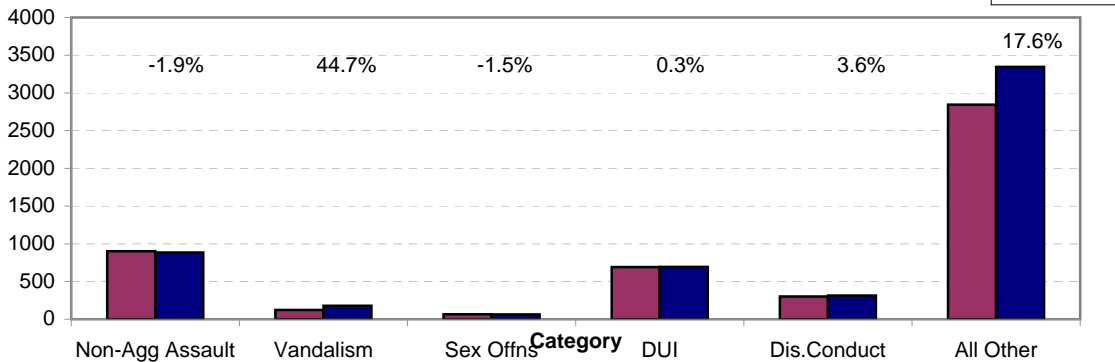
**Arrests for Vice/CCW/Drugs/Etc. Year-to-Date
Charlotte-Mecklenburg Police Department: 2005- 2006
(Through April)**



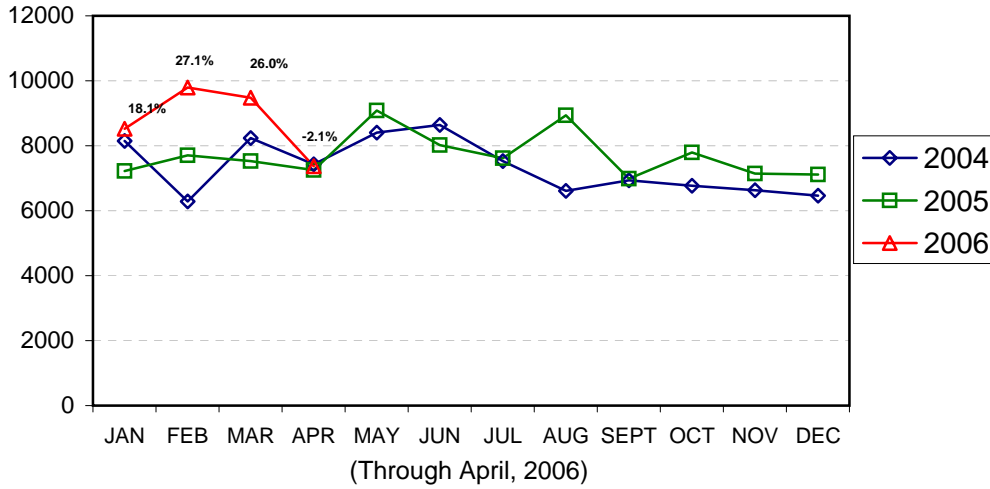
**Arrests for Property/White Collar Crime Year-to-Date
Charlotte-Mecklenburg Police Department: 2005- 2006
(Through April)**



**Arrests for Other Categories Year-to-Date
Charlotte-Mecklenburg Police Department: 2005 - 2006
(Through April)**

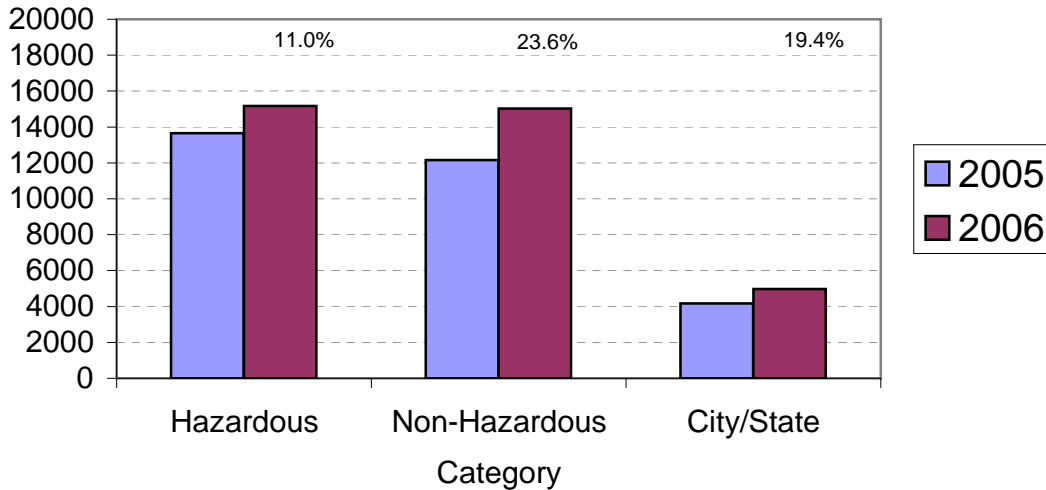


**Total Citation Enforcement by Month
Charlotte-Mecklenburg Police Dept.: 2004-2006**

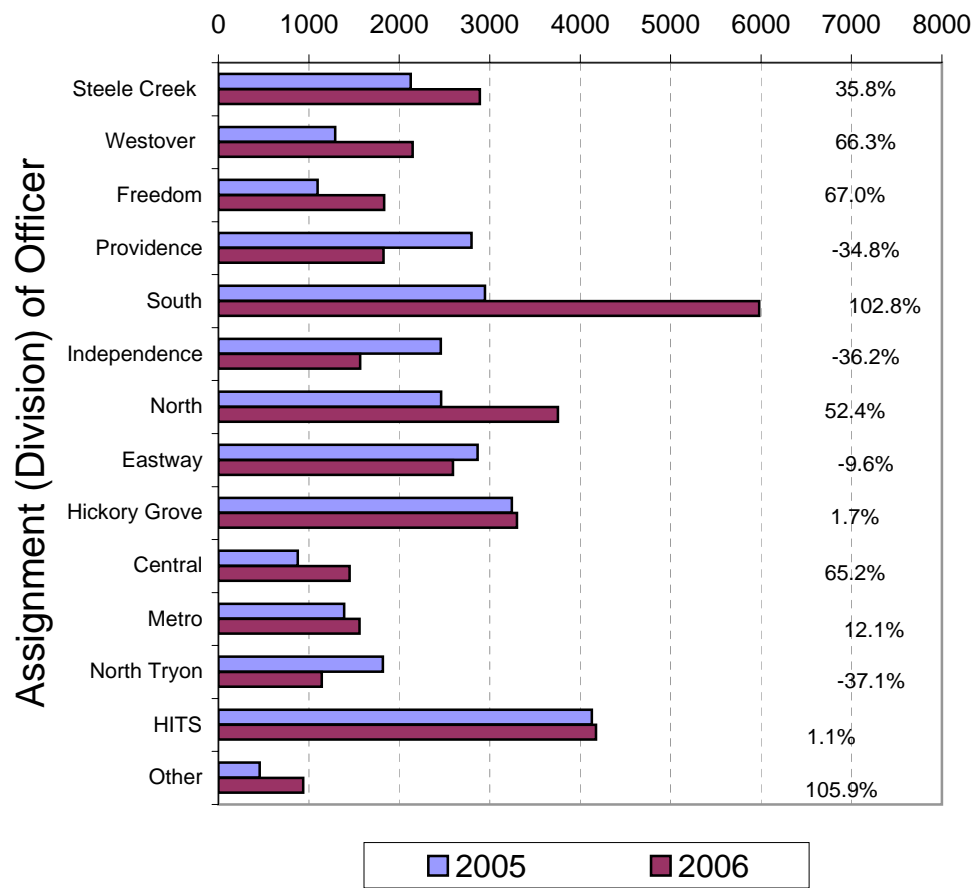


(Includes Hazardous, Non-Hazardous, and City/State Citations; percentages are current month compared to same month in previous year. Percentages are the change from

**CMPD Citation Enforcement by Category
Year-to-Date, 2005 - 2006
(Through April, 2006)**



**Citations Issued Year-to-Date by CMPD Divisions
2005 - 2006
(Through April, 2006)**



**Citations Issued by the Charlotte Mecklenburg Police Officers Year-to-Date
(Through April, 2006)**

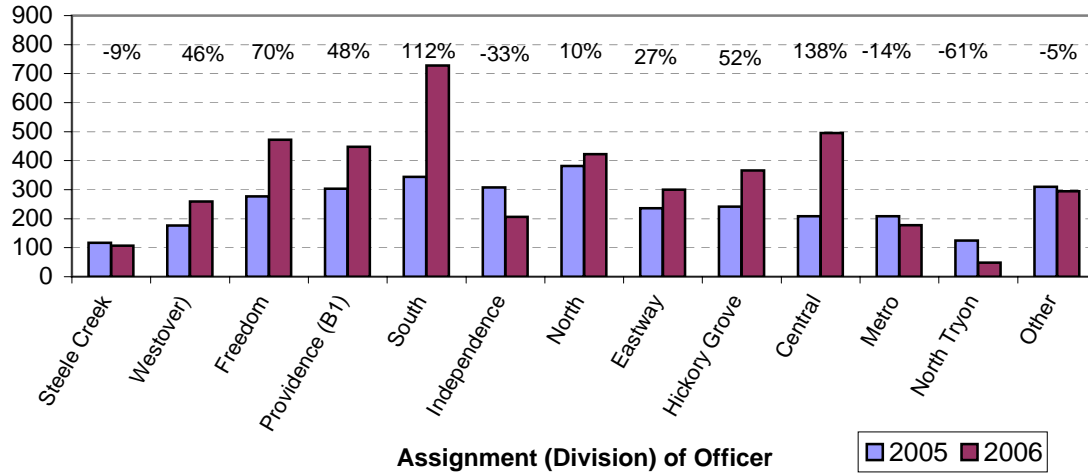
	2005	2006	% Change
Hazardous	13,656	15,164	11.0%
Non-Hazardous	12,150	15,021	23.6%
Other City/State Statute/Ordinance	4,170	4,977	19.4%
Total	29,976	35,162	17.3%

**"Safe Speed" Program: 2005-2006
(Through April, 2006)**

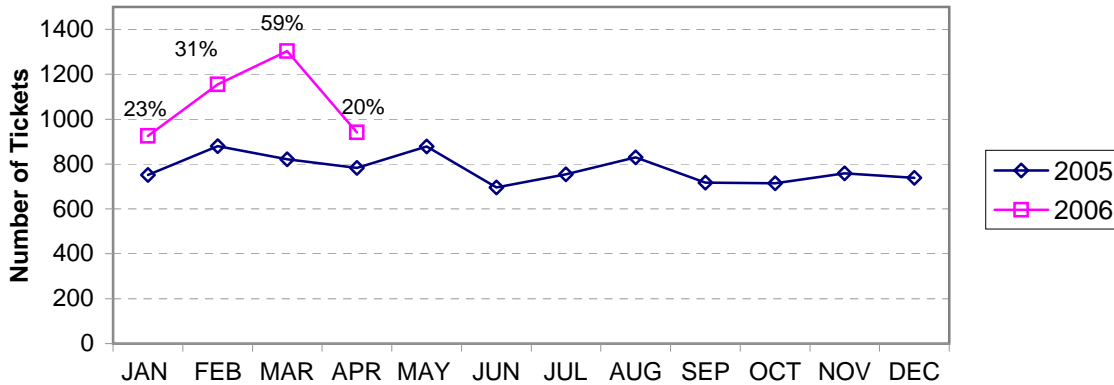
	2005	2006	% Change
Total Citations	12410	9896	-20%

(Citations issued through the "Safe Speed" program are not included in the CMPD citation totals used in the summary chart above or in the other citation charts.)

**Warning Ticket Violations Issued by Division
Charlotte-Mecklenburg Police Department, 2005- 2006
Through April, 2006**



**Total Warning Ticket Violations Issued by Month
Charlotte-Mecklenburg Police Department: 2005 - 2006**



**Warning Tickets Issued Year-to-Date
Charlotte-Mecklenburg Police Department
Through April, 2006**

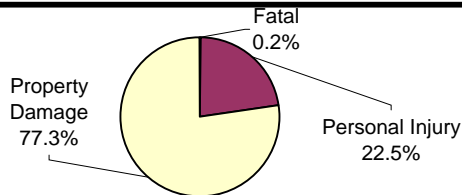
	2005	2006	% Change
Total Warning Tickets	3236	4324	33.6%

**Traffic Collision Reports
Charlotte-Mecklenburg Police Department
Year-to-Date: 2005-2006
(Through April)**

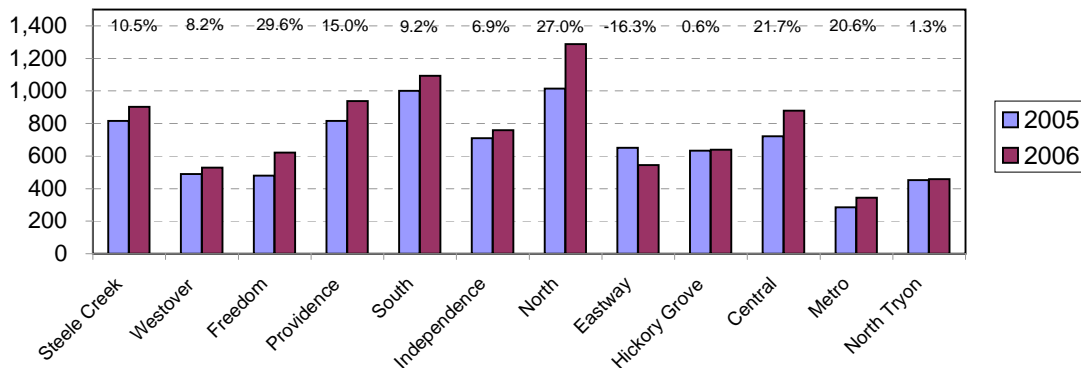
<u>Type</u>	<u>2005</u>	<u>2006</u>	<u>% Change</u>
Fatal Collisions	13	22	69.2%
Vehicle Occupants Killed	11	19	72.7%
Pedestrians Killed	3	5	66.7%
Personal Injury Collisions	1958	2042	4.3%
Property Damage Collisions	6137	6987	13.9%
Total Collisions	8108	9051	11.6%

* The number of fatal collisions and the number of persons killed (fatalities) in those incidents is taken from the HITS file. Their records are updated for deaths that occur after the initial report is filed. Figures for 2005 may be adjusted after publication of 2005 Annual Report.

**Traffic Collisions Reported by Type
Charlotte-Mecklenburg Police Department:
2006 Year-to-Date
(Through April)**



**Traffic Collisions Reported by Charlotte-Mecklenburg Police Dept.
Year-to-Date By Location (Division) : 2005 -2006
(Through April)**



Uniform Crime Reporting Procedures

The Charlotte-Mecklenburg Police Department reports offense and arrest statistics in accordance with standard Uniform Crime Reporting (UCR) guidelines. UCR policy states that any adjustments to previous months can be made on the current month's report:

...In tabulating crime counts, an agency may find that offense totals for past months require adjustments due to developments in the investigation or other handling of the matter. It may be necessary to adjust totals reported to UCR for the past month or prior months. Needed adjustments can be made on the current month's report and do not affect the reliability of the figures in that such adjustments tend to equalize each other from month to month over a period of time.

- *Uniform Crime Reporting Handbook*, FBI, 1984, p. 42-43

We are required to report crime monthly to the UCR program, and we do therefore make an effort to process monthly changes in a timely manner. However, occasionally due to the review and processing required for reclassifying, unfounding or clearing cases, the current month's totals may reflect the processing of a backlog of these changes from previous months.

Users of the data are cautioned that conclusions about substantial changes in crime trends or in clearance rates based on only a single month's data or trend may reflect some of these adjustments. For this reason, in addition to the monthly and year-to-date trends on Page 1, the monthly report routinely includes a comparison for the previous 12 months (p. 4), as well as graphs that provide seasonal/monthly comparisons over a five-year period (p. 5-8).

UCR Definitions and Terms:

Index Crime: the eight offenses that the national UCR program tracks on a yearly basis to gauge trends in the extent of crime, despite differences among state and local criminal statutes. These offenses were selected on the basis of several factors: seriousness, frequency of occurrence, pervasiveness in all geographic areas, and/or likelihood of being reported to law enforcement.

Violent Index: includes the offenses of murder/non-negligent manslaughter, rape, robbery, and aggravated assault

Property Index: includes the offenses of burglary, larceny, vehicle theft and arson

Murder/non-negligent manslaughter: the willful killing of one human being by another

Rape: the carnal knowledge of a female forcibly and against her will [Note: This offense does not include other sex offenses or statutory (non-forcible) rape.]

Robbery: the taking or attempt to take anything of value from the care, custody, or control of a person or persons by force, threat of force or violence, or by putting the victim in fear.

Aggravated assault: an unlawful attack by one person on another for the purpose of inflicting severe or aggravated bodily injury; includes 1) all assaults in which a weapon of any type is used or is threatened to be used and/or 2) all assaults where serious injury occurs.

Burglary: the unlawful entry or attempted entry of a structure to commit a felony or a theft

Larceny-Theft: the unlawful taking (or attempt), carrying, leading, or riding away of property from the possession or constructive possession of another [Note: Larceny/theft of a motor vehicle is classed separately.]

Vehicle Theft: the theft or attempted theft of a motor vehicle (a self-propelled vehicle that runs on land and not on rails, excluding farm and construction equipment)

Arson: the willful or malicious burning or attempt to burn, with or without intent to defraud, a structure, motor vehicle, personal property of another, etc.

Hierarchy rule: For cases involving multiple-offenses, the incident is classified and counted based on the highest offense on a hierarchy of crimes established by UCR. For example, for an incident involving a rape and a burglary, the incident would be counted in the rape category because rape is higher than burglary on the hierarchy.

Clearance: A case is considered cleared when either at least one arrest is made for the offense or when an offender's identity is established by investigation but the offender will not be arrested for reasons outside law enforcement control (offender dies, victim refuses to prosecute, district attorney declines prosecution, extradition is refused, etc.).

Unfounding: A case is "unfounded" and subtracted from the crime counts when investigation establishes that the incident did not actually occur or that the actions within the incident are not criminal based on current law.

For additional information, please consult the *UCR Handbook* on the FBI website at <http://www.fbi.gov/ucr/ucr.htm>.

This report was compiled by the Research, Planning, and Analysis Division.

We make an effort to present the most accurate information available at the time this report is published. Please notify the Research, Planning, and Analysis office if you have any questions about the data in this report or about an error that was missed in proofing the report.