



---

**CHARLOTTE-MECKLENBURG POLICE DEPARTMENT  
MONTHLY SUMMARY REPORT  
MAY, 2006**

---

---

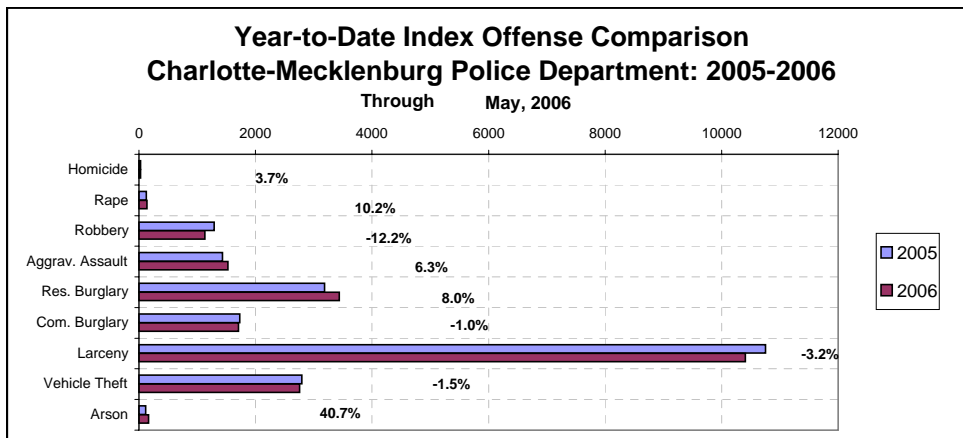
**Darrel Stephens  
Chief of Police**

---

**INDEX OFFENSES REPORTED TO CHARLOTTE-MECKLENBURG POLICE DEPARTMENT**

May, 2006 INDEX OFFENSES	# THIS MONTH	% OF ALL INDEX	# LAST MONTH	MONTHLY % CHANGE	SAME MONTH LAST YEAR	MONTHLY % CHANGE	THIS YEAR TO DATE	LAST YEAR TO DATE	ANNUAL % CHANGE
HOMICIDE (MURDER & NON-NEGLIGENT MANSLAUGHTER)	8	0.2%	4	100.0%	9	-11.1%	28	27	3.7%
RAPE TOTAL	26	0.6%	33	-21.2%	37	-29.7%	140	127	10.2%
ACTUAL	24	0.5%	30	-20.0%	33	-27.3%	127	119	6.7%
ATTEMPT	2	0.0%	3	-33.3%	4	-50.0%	13	8	62.5%
ROBBERY TOTAL	260	5.6%	258	0.8%	276	-5.8%	1134	1291	-12.2%
ARMED	188	4.0%	194	-3.1%	219	-14.2%	892	1035	-13.8%
STRONG-ARM	72	1.5%	64	12.5%	57	26.3%	242	256	-5.5%
AGGRAVATED ASSAULT TOTAL	306	6.5%	373	-18.0%	306	0.0%	1526	1436	6.3%
BURGLARY TOTAL	1100	23.5%	965	14.0%	1059	3.9%	5170	4912	5.3%
RESIDENTIAL	728	15.6%	668	9.0%	666	9.3%	3440	3184	8.0%
COMMERCIAL	372	8.0%	277	34.3%	393	-5.3%	1710	1728	-1.0%
*****									
FORCE	889	19.0%	763	16.5%	876	1.5%	4212	4033	4.4%
NO FORCE	125	2.7%	128	-2.3%	130	-3.8%	571	560	2.0%
ATTEMPT	86	1.8%	74	16.2%	53	62.3%	387	319	21.3%
LARCENY TOTAL	2331	49.8%	2141	8.9%	2365	-1.4%	10405	10754	-3.2%
\$200 AND OVER	1184	25.3%	1100	7.6%	1165	1.6%	5279	5308	-0.5%
\$50 TO \$200	454	9.7%	402	12.9%	448	1.3%	1978	2083	-5.0%
UNDER \$50	693	14.8%	639	8.5%	752	-7.8%	3148	3363	-6.4%
*****									
FROM AUTO	1175	25.1%	1097	7.1%	1172	0.3%	5319	5405	-1.6%
BICYCLE	22	0.5%	11	100.0%	21	4.8%	63	62	1.6%
SHOPLIFTING	243	5.2%	222	9.5%	224	8.5%	1110	1040	6.7%
OTHERS	891	19.0%	811	9.9%	948	-6.0%	3913	4247	-7.9%
VEHICLE THEFT TOTAL	620	13.3%	551	12.5%	665	-6.8%	2756	2797	-1.5%
ARSON TOTAL	28	0.6%	37	-24.3%	25	12.0%	166	118	40.7%
TOTALS	4679	100.0%	4362	7.3%	4742	-1.3%	21325	21462	-0.6%
VIOLENT PROPERTY	600	12.8%	668	-10.2%	628	-4.5%	2828	2881	-1.8%
PROPERTY	4079	87.2%	3694	10.4%	4114	-0.9%	18497	18581	-0.5%

NOTE: These totals include offenses reported to the Charlotte-Mecklenburg Police Department in accordance with the Uniform Crime Reporting Program. Totals for homicide do not include cases investigated by the police but classed by UCR guidelines as negligent manslaughter or as "justifiable homicide."

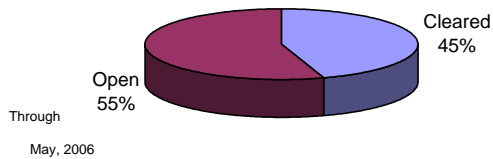


**INDEX CLEARANCES REPORTED BY THE CHARLOTTE-MECKLENBURG POLICE DEPARTMENT**

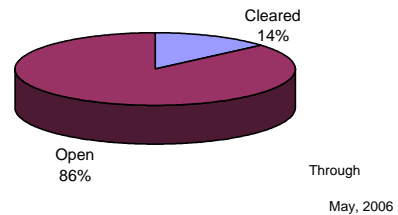
May, 2006 INDEX CLEARANCES	THIS MONTH:		LAST MONTH:		SAME MO. LAST YR:		THIS YEAR TO DATE:		LAST YEAR TO DATE:	
	NO.	%	NO.	%	NO.	%	NO.	%	NO.	%
MURDER & NON-NEGLIGENT MANSLAUGHTER <sup>1</sup>	3	37.5%	5	125.0%	1	11.1%	16	57.1%	11	40.7%
RAPE TOTAL	26	100.0%	17	51.5%	20	54.1%	106	75.7%	103	81.1%
ACTUAL	25	104.2%	15	50.0%	19	57.6%	97	76.4%	100	84.0%
ATTEMPT	1	50.0%	2	66.7%	1	25.0%	9	69.2%	13	162.5%
ROBBERY TOTAL	70	26.9%	54	20.9%	61	22.1%	367	32.4%	312	24.2%
ARMED	54	28.7%	39	20.1%	45	20.5%	287	32.2%	239	23.1%
STRONG-ARM	16	22.2%	15	23.4%	16	28.1%	80	33.1%	73	28.5%
AGGRAVATED ASSAULT TOTAL	177	57.8%	119	31.9%	169	55.2%	785	51.4%	747	52.0%
BURGLARY TOTAL	99	9.0%	83	8.6%	128	12.1%	442	8.5%	604	12.3%
RESIDENTIAL	77	10.6%	67	10.0%	100	15.0%	346	10.1%	484	15.2%
COMMERCIAL	22	5.9%	16	5.8%	28	7.1%	96	5.6%	120	6.9%
LARCENY TOTAL	356	15.3%	290	13.5%	350	14.8%	1692	16.3%	1628	15.1%
FROM AUTO	37	3.1%	47	4.3%	76	6.5%	198	3.7%	245	4.5%
BICYCLE	0	0.0%	0	0.0%	2	9.5%	3	4.8%	9	14.5%
SHOPLIFTING	153	63.0%	137	61.7%	155	69.2%	731	65.9%	716	68.8%
OTHERS	166	18.6%	106	13.1%	117	12.3%	760	19.4%	658	15.5%
VEHICLE THEFT TOTAL	63	10.2%	62	11.3%	124	18.6%	335	12.2%	478	17.1%
ARSON TOTAL	8	28.6%	8	21.6%	6	24.0%	44	26.5%	21	17.8%
TOTALS	802	17.1%	638	14.6%	859	18.1%	3787	17.8%	3904	18.2%
VIOLENT PROPERTY	276	46.0%	195	29.2%	251	40.0%	1274	45.0%	1173	40.7%
	526	12.9%	443	12.0%	608	14.8%	2513	13.6%	2731	14.7%

<sup>1</sup>NOTE : Clearances are reported in accordance with Uniform Crime Report guidelines. Since clearances are not counted for UCR until they are entered in the Records Management system, any delays in entry of the documentation may result in some clearances being reported later in succeeding months. Clearances for homicides from years prior to the automated KBCOPS Records and Case Management modules were counted in the December clearances.

**Year-to-Date Violent Index Clearance Rate  
Charlotte-Mecklenburg Police Department: 2006**

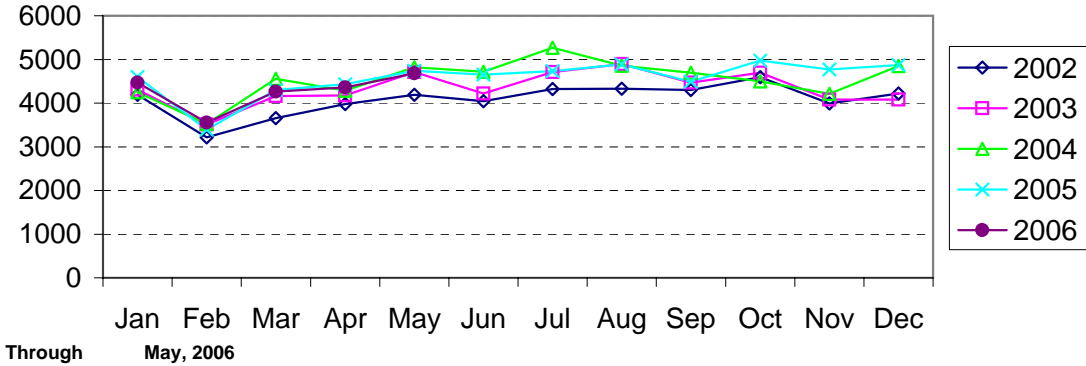


**Year-to-Date Property Index Clearance Rate  
Charlotte-Mecklenburg Police Department: 2006**

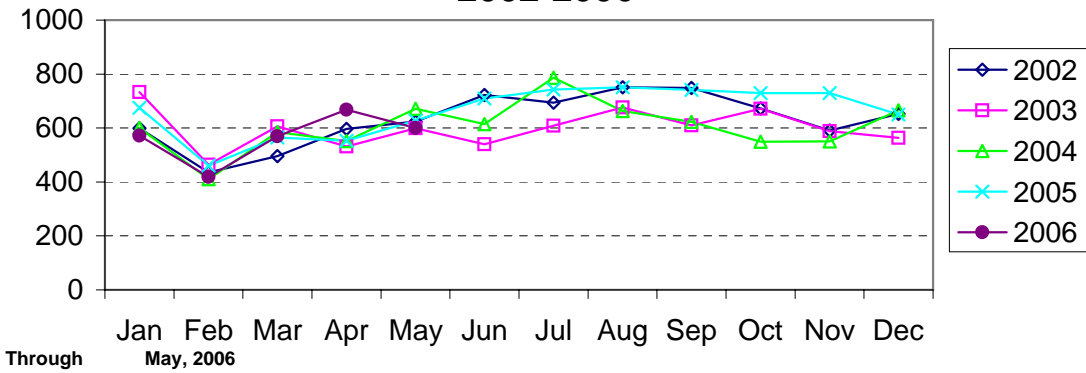


Clearance rates for crime reporting are calculated by dividing the number of crimes cleared during a designated time span by the number of crimes reported in the same period and converting the result to a percentage (multiplying by 100). Since cases from previous reporting periods can be cleared during the designated time span, the rate may be higher than 100%.

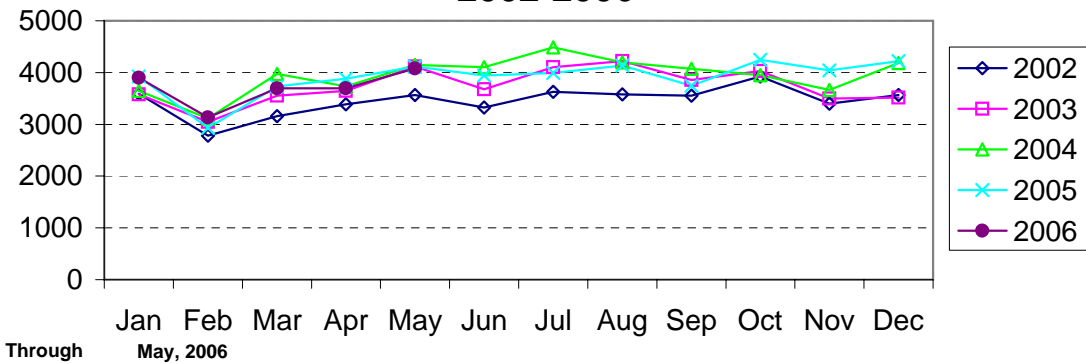
### Index Offenses Reported by Month Charlotte-Mecklenburg Police Department: 2002-2006



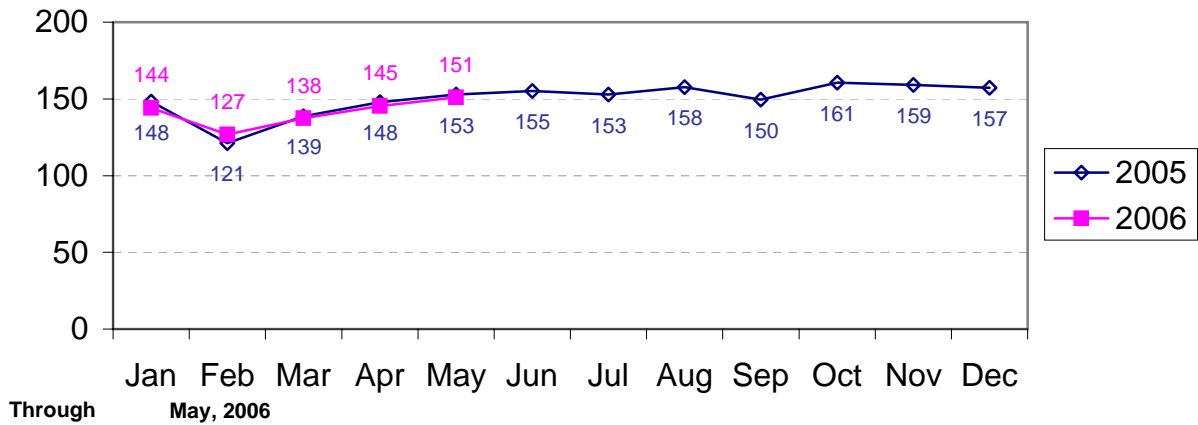
### Violent Index Offenses Reported by Month Charlotte-Mecklenburg Police Department: 2002-2006



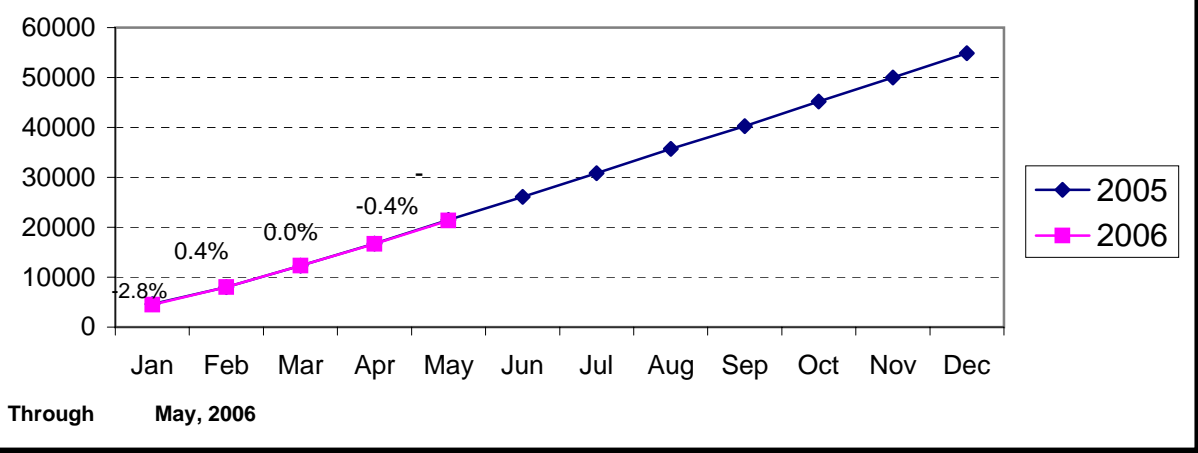
### Property Index Offenses Reported by Month Charlotte-Mecklenburg Police Department: 2002-2006



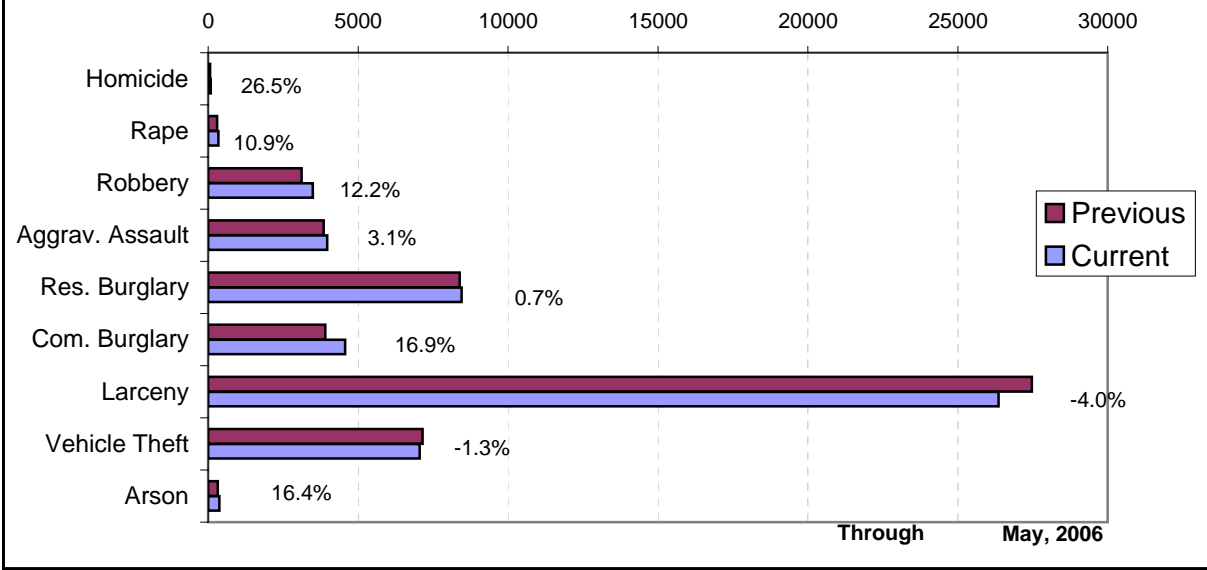
### Index Offense Per Day Average by Month Charlotte-Mecklenburg Police Department: 2005-2006



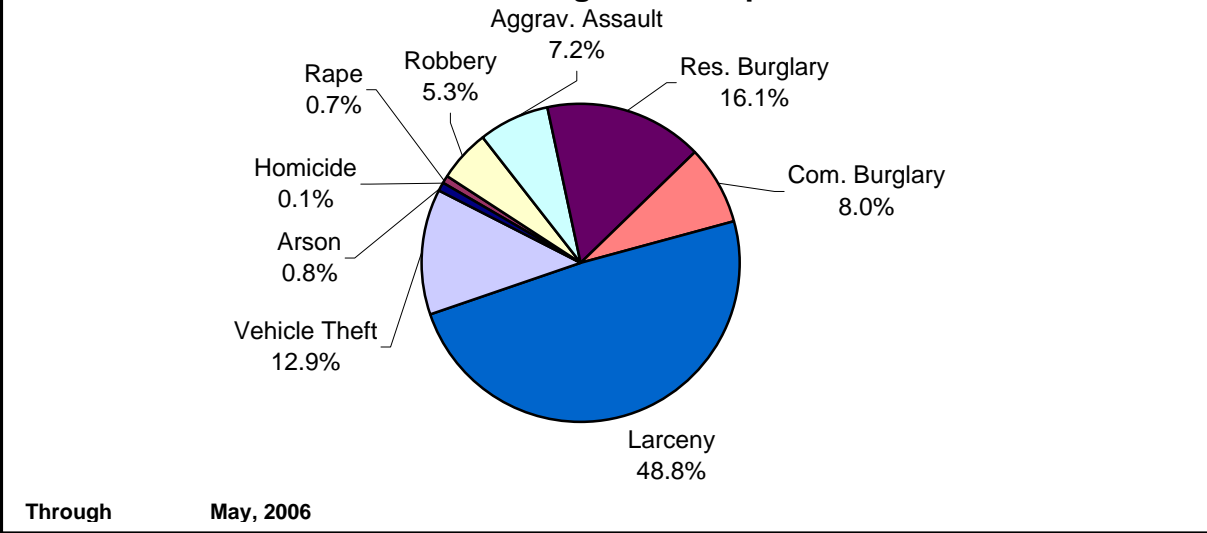
### Index Offenses Year-to-Date Cumulative Totals Charlotte-Mecklenburg Police Department: 2005-2006



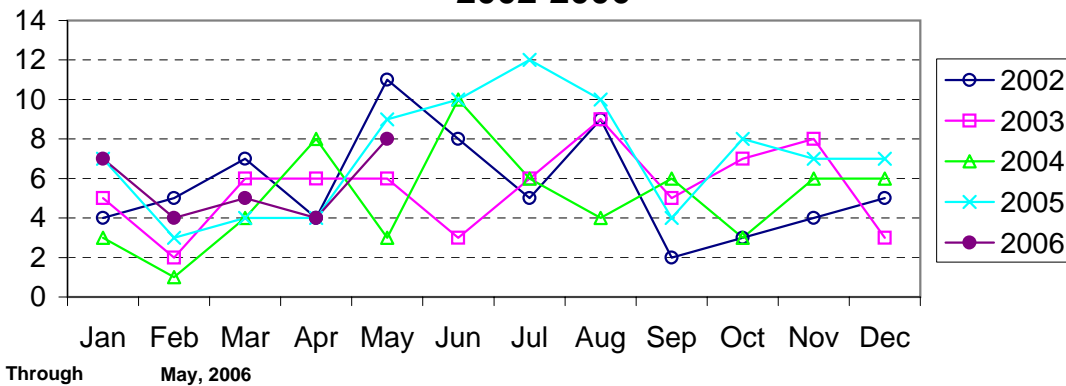
### Index Offenses in Current & Previous 12 Month Periods Charlotte-Mecklenburg Police Department



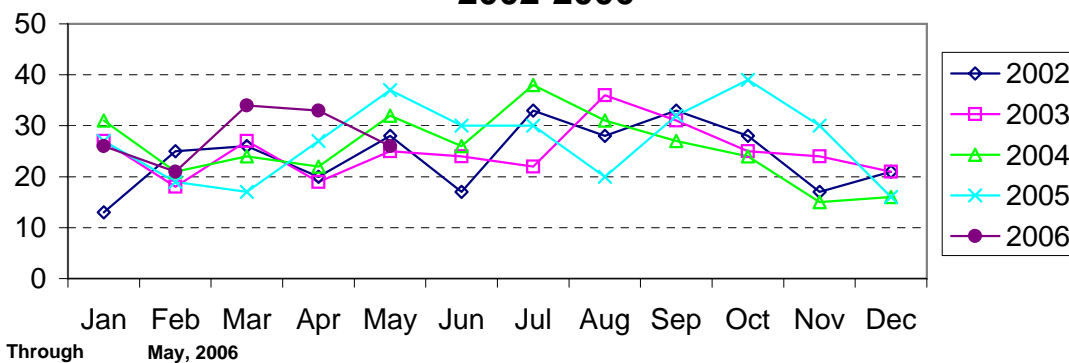
### Year-to-Date Index Offenses by Type Charlotte-Mecklenburg Police Department: 2006



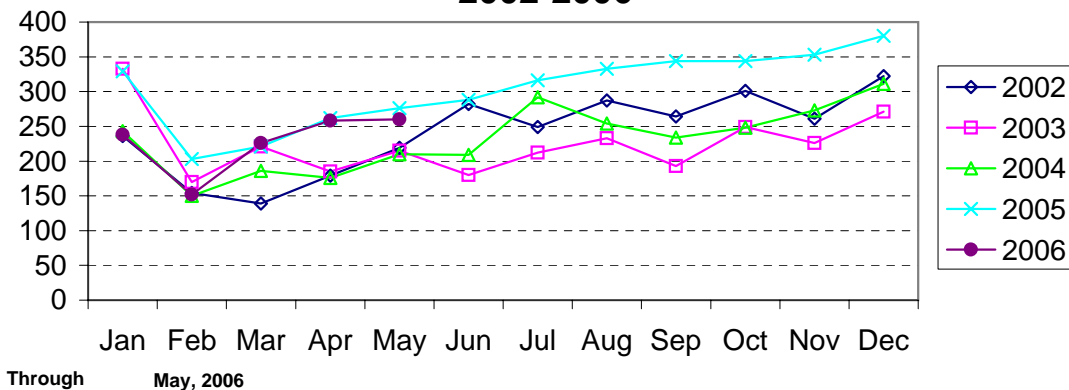
### Homicide Reported by Month Charlotte-Mecklenburg Police Department: 2002-2006



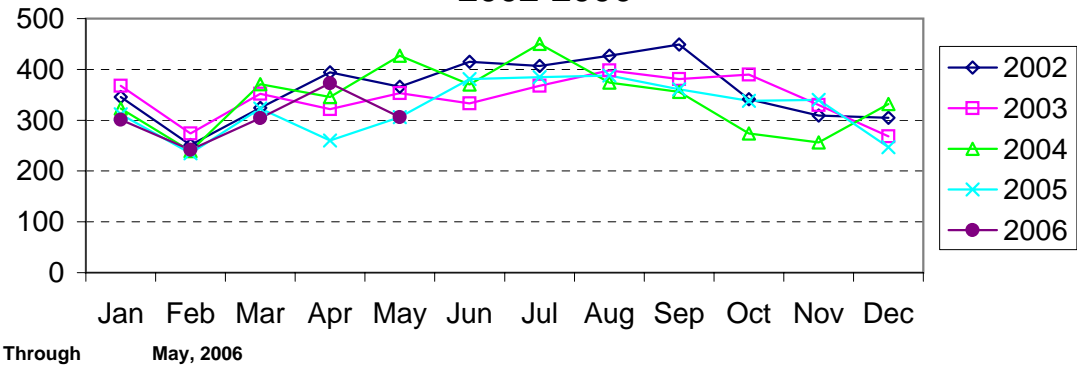
### Rape Reported by Month Charlotte-Mecklenburg Police Department: 2002-2006



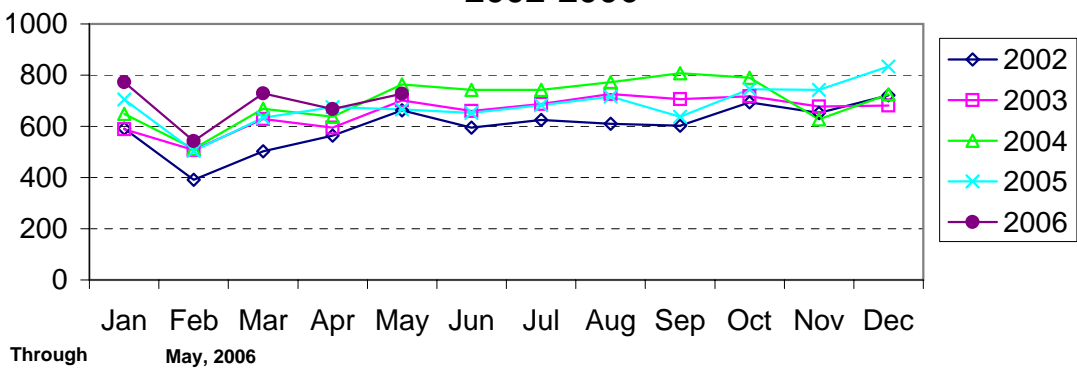
### Robbery Reported by Month Charlotte-Mecklenburg Police Department: 2002-2006



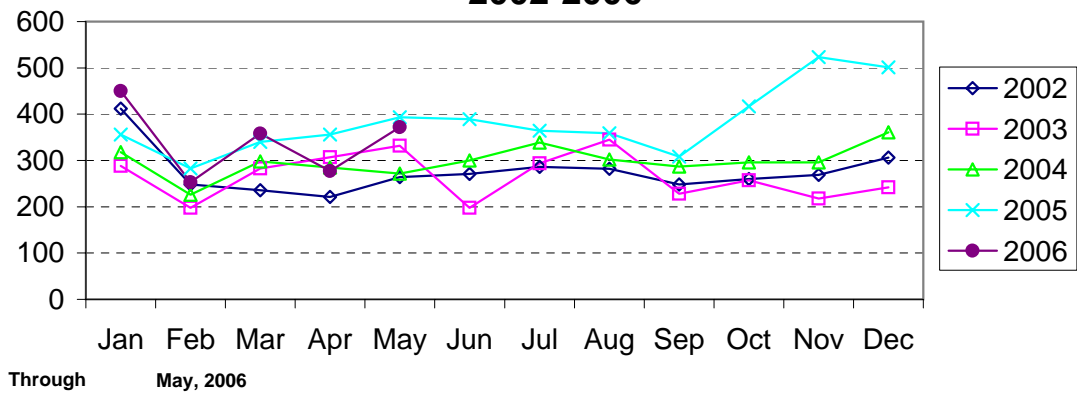
**Aggravated Assault Reported by Month  
Charlotte-Mecklenburg Police Department:  
2002-2006**



**Residential Burglary Reported by Month  
Charlotte-Mecklenburg Police Department:  
2002-2006**

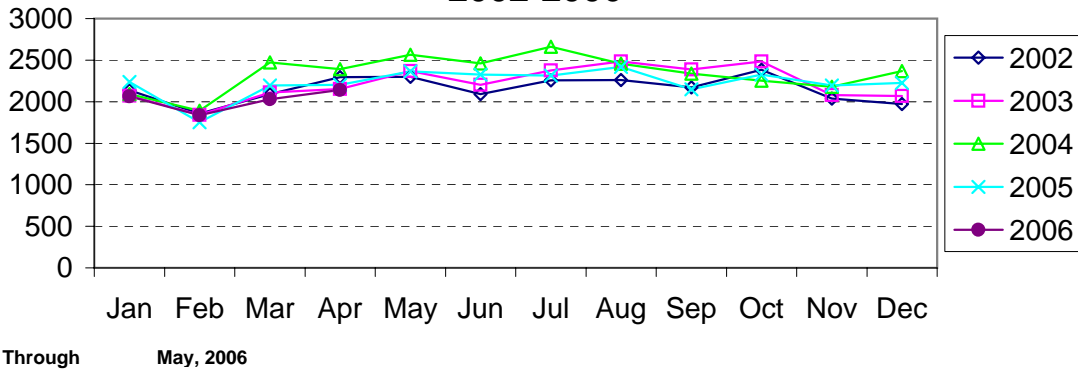


**Commercial Burglary Reported by Month  
Charlotte-Mecklenburg Police Department:  
2002-2006**

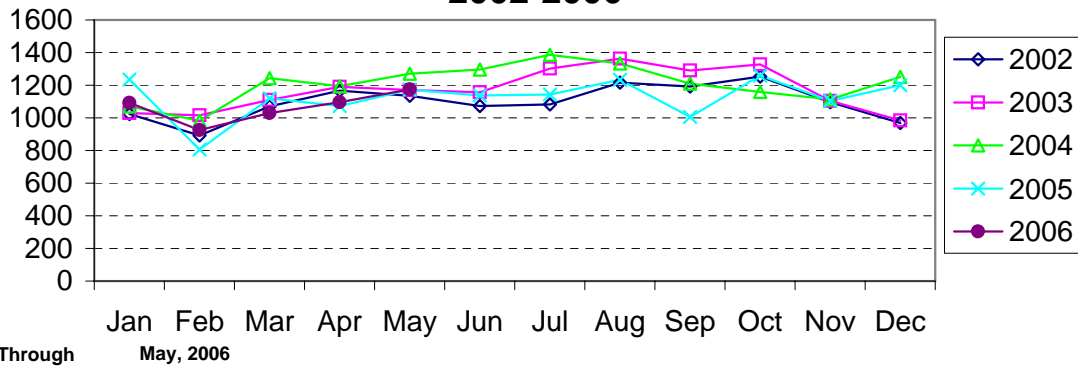




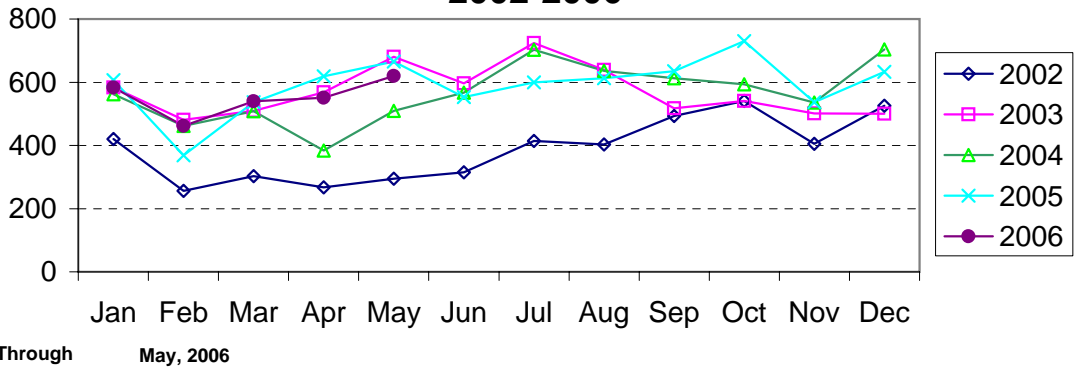
### Larceny Reported by Month Charlotte-Mecklenburg Police Department: 2002-2006



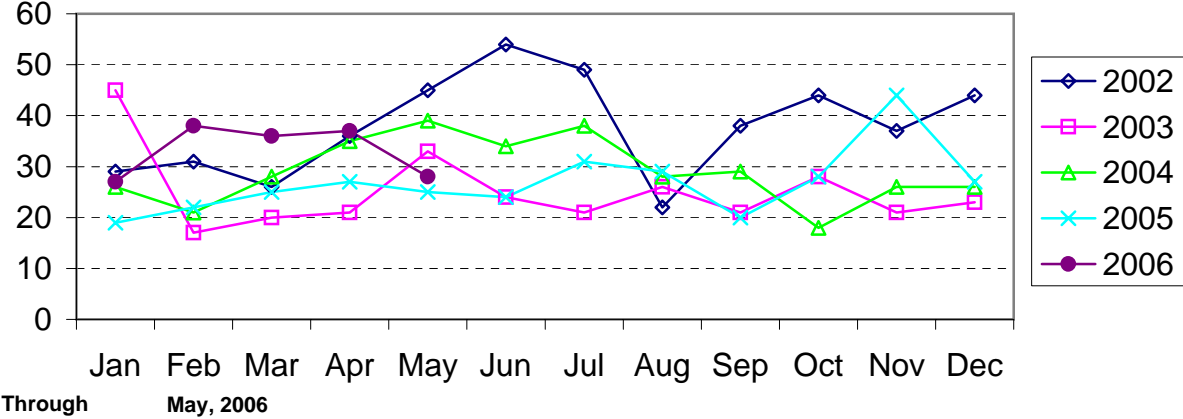
### Larceny from Vehicle Reported by Month Charlotte-Mecklenburg Police Department: 2002-2006



### Vehicle Theft Reported by Month Charlotte-Mecklenburg Police Department: 2002-2006



### Arson Reported by Month Charlotte-Mecklenburg Police Department: 2002-2006



Index Offenses Reported by Division and Service Area of Occurrence									
West Service Area: May 2005-2006									
INDEX_CATEGORIES	Westover (A2)			Freedom (A3)			West Service Area		
	2005	2006	% Change	2005	2006	% Change	2005	2006	% Change
MURDER & NON-NEGLIGENT MANSLAUGHTER	1	1	0.0%	3	3	0.0%	4	4	0.0%
RAPE	13	12	-7.7%	14	11	-21.4%	27	23	-14.8%
ACTUAL	12	12	0.0%	14	12	-14.3%	26	24	-7.7%
ATTEMPTED	1	0	-100.0%	0	-1	NA	1	-1	-200.0%
ROBBERY	113	108	-4.4%	179	137	-23.5%	292	245	-16.1%
ARMED	89	89	0.0%	159	110	-30.8%	248	199	-19.8%
STRONG-ARM	24	19	-20.8%	20	27	35.0%	44	46	4.5%
AGGRAVATED ASSAULT	157	226	43.9%	194	198	2.1%	351	424	20.8%
BURGLARY	379	399	5.3%	696	654	-6.0%	1075	1053	-2.0%
RESIDENTIAL	194	278	43.3%	431	410	-4.9%	625	688	10.1%
COMMERCIAL	185	121	-34.6%	265	244	-7.9%	450	365	-18.9%
LARCENY	704	664	-5.7%	997	1102	10.5%	1701	1766	3.8%
FROM AUTO	324	311	-4.0%	427	500	17.1%	751	811	8.0%
BICYCLE	0	4	NA	4	2	-50.0%	4	6	50.0%
SHOPLIFTING	58	77	32.8%	93	135	45.2%	151	212	40.4%
OTHERS	322	272	-15.5%	473	465	-1.7%	795	737	-7.3%
VEHICLE THEFT	208	232	11.5%	273	279	2.2%	481	511	6.2%
ARSON	9	9	0.0%	11	24	118.2%	20	33	65.0%
TOTALS	1584	1651	4.2%	2367	2408	1.7%	3951	4059	2.7%
VIOLENT PROPERTY	284 1300	347 1304	22.2% 0.3%	390 1977	349 2059	-10.5% 4.1%	674 3277	696 3363	3.3% 2.6%

Index Offenses Reported by Division and Service Area of Occurrence									
Southeast Service Area: May 2005-2006									
INDEX_CATEGORIES	Providence (B1)			Independence (B3)			Southeast Service Area		
	2005	2006	% Change	2005	2006	% Change	2005	2006	% Change
MURDER & NON-NEGLIGENT MANSLAUGHTER	2	2	0.0%	2	0	-100.0%	4	2	-50.0%
RAPE	5	10	100.0%	15	14	-6.7%	20	24	20.0%
ACTUAL	5	9	80.0%	13	12	-7.7%	18	21	16.7%
ATTEMPTED	0	1	NA	2	2	0.0%	2	3	50.0%
ROBBERY	50	49	-2.0%	112	108	-3.6%	162	157	-3.1%
ARMED	41	31	-24.4%	92	94	2.2%	133	125	-6.0%
STRONG-ARM	9	18	100.0%	20	14	-30.0%	29	32	10.3%
AGGRAVATED ASSAULT	45	55	22.2%	117	94	-19.7%	162	149	-8.0%
BURGLARY	341	297	-12.9%	383	457	19.3%	724	754	4.1%
RESIDENTIAL	210	184	-12.4%	307	371	20.8%	517	555	7.4%
COMMERCIAL	131	113	-13.7%	76	86	13.2%	207	199	-3.9%
LARCENY	778	740	-4.9%	937	809	-13.7%	1715	1549	-9.7%
FROM AUTO	329	358	8.8%	516	376	-27.1%	845	734	-13.1%
BICYCLE	8	3	-62.5%	3	13	333.3%	11	16	45.5%
SHOPLIFTING	93	120	29.0%	94	102	8.5%	187	222	18.7%
OTHERS	348	259	-25.6%	324	318	-1.9%	672	577	-14.1%
VEHICLE THEFT	114	126	10.5%	324	265	-18.2%	438	391	-10.7%
ARSON	4	4	0.0%	16	8	-50.0%	20	12	-40.0%
TOTALS	1339	1283	-4.2%	1906	1755	-7.9%	3245	3038	-6.4%
VIOLENT PROPERTY	102 1237	116 1167	13.7% -5.7%	246 1660	216 1539	-12.2% -7.3%	348 2897	332 2706	-4.6% -6.6%

The data in the district breakdowns does not include a small number of offenses in which the offense location (or reporting location if offense location was unknown) was entered without one of the 12 valid division assignments. Districts are not equal in geographic size, demographics, zoning/development, and other factors that influence the rate of crimes committed in an area. Therefore, the comparison of raw offense totals across districts is **not** advisable.

Index Offenses Reported by Division and Service Area of Occurrence									
Northeast Service Area: May 2005-2006									
INDEX_CATEGORIES	North (C1)			Hickory Grove (C3)			Northeast Service Area		
	2005	2006	% Change	2005	2006	% Change	2005	2006	% Change
MURDER & NON-NEGLIGENT MANSLAUGHTER	6	3	-50.0%	4	3	-25.0%	10	6	-40.0%
RAPE	15	25	66.7%	12	14	16.7%	27	39	44.4%
ACTUAL	13	24	84.6%	10	12	20.0%	23	36	56.5%
ATTEMPTED	2	1	-50.0%	2	2	0.0%	4	3	-25.0%
ROBBERY	93	131	40.9%	105	107	1.9%	198	238	20.2%
ARMED	78	117	50.0%	81	82	1.2%	159	199	25.2%
STRONG-ARM	15	14	-6.7%	24	25	4.2%	39	39	0.0%
AGGRAVATED ASSAULT	124	124	0.0%	152	159	4.6%	276	283	2.5%
BURGLARY	661	821	24.2%	665	715	7.5%	1326	1536	15.8%
RESIDENTIAL	473	538	13.7%	401	508	26.7%	874	1046	19.7%
COMMERCIAL*	188	283	50.5%	264	207	-21.6%	452	490	8.4%
LARCENY	1729	1805	4.4%	782	714	-8.7%	2511	2519	0.3%
FROM AUTO	957	1026	7.2%	402	385	-4.2%	1359	1411	3.8%
BICYCLE	8	8	0.0%	8	8	0.0%	16	16	0.0%
SHOPLIFTING	160	191	19.4%	70	53	-24.3%	230	244	6.1%
OTHERS	604	580	-4.0%	302	268	-11.3%	906	848	-6.4%
VEHICLE THEFT	387	385	-0.5%	341	238	-30.2%	728	623	-14.4%
ARSON	17	24	41.2%	15	19	26.7%	32	43	34.4%
TOTALS	3032	3318	9.4%	2076	1969	-5.2%	5108	5287	3.5%
VIOLENT PROPERTY	238 2794	283 3035	18.9% 8.6%	273 1803	283 1686	3.7% -6.5%	511 4597	566 4721	10.8% 2.7%

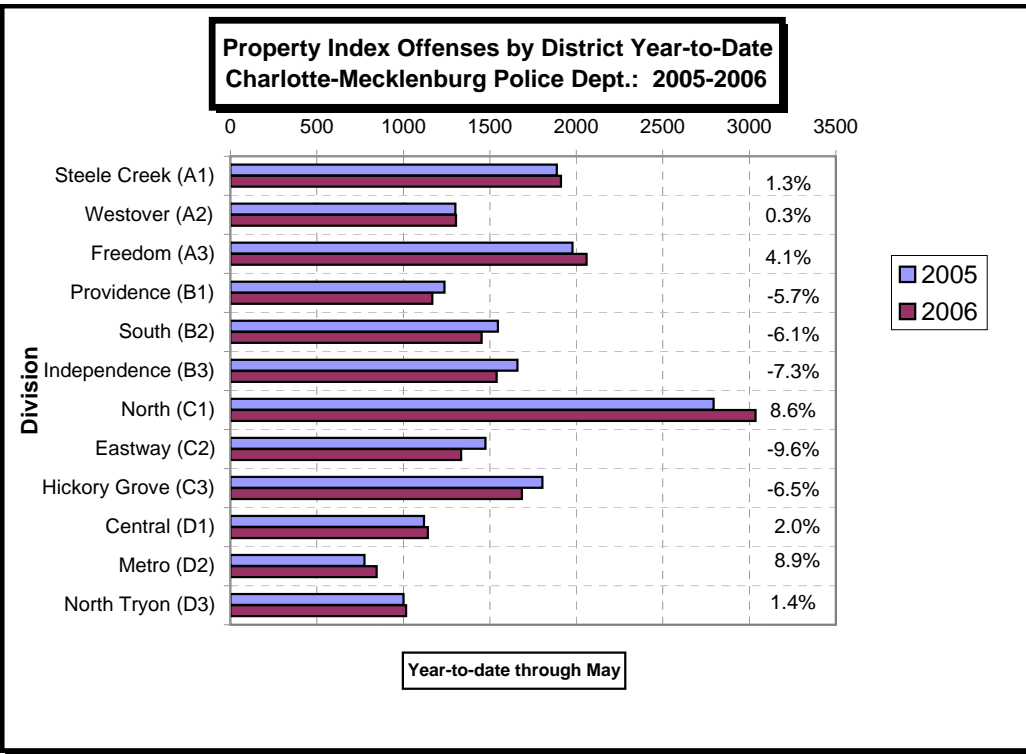
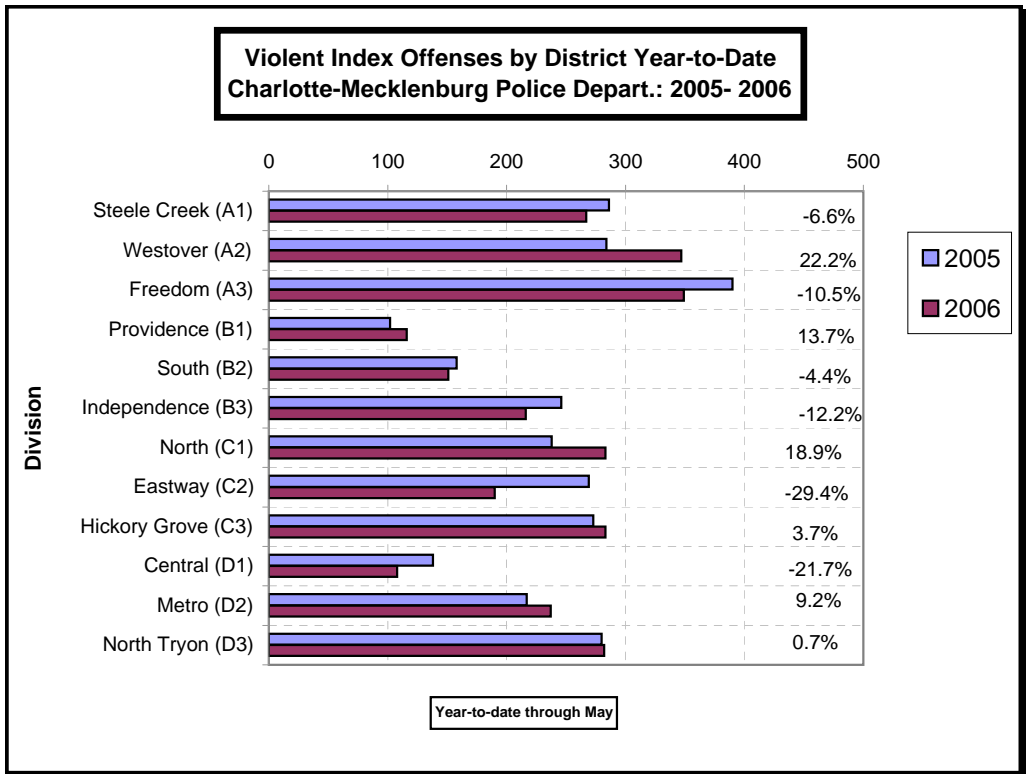
Index Offenses Reported by Division and Service Area of Occurrence									
Central Service Area: May 2005-2006									
INDEX_CATEGORIES	Central (D1)			Metro (D2)			Central Service Area		
	2005	2006	% Change	2005	2006	% Change	2005	2006	% Change
MURDER & NON-NEGLIGENT MANSLAUGHTER	1	1	0.0%	3	3	0.0%	4	4	0.0%
RAPE	13	9	-30.8%	3	9	200.0%	16	18	12.5%
ACTUAL	12	8	-33.3%	4	9	125.0%	16	17	6.3%
ATTEMPTED	1	1	0.0%	-1	0	-100.0%	0	1	NA
ROBBERY	69	52	-24.6%	86	64	-25.6%	155	116	-25.2%
ARMED	39	34	-12.8%	68	40	-41.2%	107	74	-30.8%
STRONG-ARM	30	18	-40.0%	18	24	33.3%	48	42	-12.5%
AGGRAVATED ASSAULT	55	46	-16.4%	125	161	28.8%	180	207	15.0%
BURGLARY	146	146	0.0%	259	266	2.7%	405	412	1.7%
RESIDENTIAL	49	61	24.5%	210	165	-21.4%	259	226	-12.7%
COMMERCIAL	97	85	-12.4%	49	101	106.1%	146	186	27.4%
LARCENY	853	794	-6.9%	368	399	8.4%	1221	1193	-2.3%
FROM AUTO	462	418	-9.5%	162	184	13.6%	624	602	-3.5%
BICYCLE	7	4	-42.9%	5	3	-40.0%	12	7	-41.7%
SHOPLIFTING	21	32	52.4%	15	11	-26.7%	36	43	19.4%
OTHERS	363	340	-6.3%	186	201	8.1%	549	541	-1.5%
VEHICLE THEFT	121	189	56.2%	141	174	23.4%	262	363	38.5%
ARSON	0	13	NA	8	6	-25.0%	8	19	137.5%
TOTALS	1258	1250	-0.6%	993	1082	9.0%	2251	2332	3.6%
VIOLENT PROPERTY	138 1120	108 1142	-21.7% 2.0%	217 776	237 845	9.2% 8.9%	355 1896	345 1987	-2.8% 4.8%

The data in the district breakdowns does not include a small number of offenses in which the offense location (or reporting location if offense location was unknown) was entered without one of the 12 valid division assignments. Districts are not equal in geographic size, demographics, zoning/development, and other factors that influence the rate of crimes committed in an area. Therefore, the comparison of raw offense totals across districts is **not** advisable.

Index Offenses Reported by Division and Service Area of Occurrence									
East Service Area: May 2005-2006									
INDEX_CATEGORIES	Eastway (C2)			North Tryon (D3)			East Service Area		
	2005	2006	% Change	2005	2006	% Change	2005	2006	% Change
MURDER & NON-NEGLIGENT MANSLAUGHTER	2	1	-50.0%	3	3	0.0%	5	4	-20.0%
RAPE	13	8	-38.5%	6	7	16.7%	19	15	-21.1%
ACTUAL	13	6	-53.8%	5	7	40.0%	18	13	-27.8%
ATTEMPTED	0	2	NA	1	0	-100.0%	1	2	100.0%
ROBBERY	161	107	-33.5%	125	106	-15.2%	286	213	-25.5%
ARMED	123	83	-32.5%	100	77	-23.0%	223	160	-28.3%
STRONG-ARM	38	24	-36.8%	25	29	16.0%	63	53	-15.9%
AGGRAVATED ASSAULT	93	74	-20.4%	146	166	13.7%	239	240	0.4%
BURGLARY	359	338	-5.8%	316	373	18.0%	675	711	5.3%
RESIDENTIAL	254	252	-0.8%	207	216	4.3%	461	468	1.5%
COMMERCIAL	105	86	-18.1%	112	157	40.2%	217	243	12.0%
LARCENY	910	765	-15.9%	502	449	-10.6%	1412	1214	-14.0%
FROM AUTO	337	325	-3.6%	253	224	-11.5%	590	549	-6.9%
BICYCLE	8	6	-25.0%	3	5	66.7%	11	11	0.0%
SHOPLIFTING	245	177	-27.8%	27	22	-18.5%	272	199	-26.8%
OTHERS	320	257	-19.7%	219	198	-9.6%	539	455	-15.6%
VEHICLE THEFT	198	225	13.6%	178	177	-0.6%	376	402	6.9%
ARSON	8	5	-37.5%	5	16	220.0%	13	21	61.5%
TOTALS	1744	1523	-12.7%	1281	1297	1.2%	3025	2820	-6.8%
VIOLENT	269	190	-29.4%	280	282	0.7%	549	472	-14.0%
PROPERTY	1475	1333	-9.6%	1001	1015	1.4%	2476	2348	-5.2%

Index Offenses Reported by Division and Service Area of Occurrence									
South Service Area: May 2005-2006									
INDEX_CATEGORIES	Steele Creek (A1)			South (B2)			South Service Area		
	2005	2006	% Change	2005	2006	% Change	2005	2006	% Change
MURDER & NON-NEGLIGENT MANSLAUGHTER	0	4	NA	0	4	NA	0	8	NA
RAPE	13	16	23.1%	5	5	0.0%	18	21	16.7%
ACTUAL	13	13	0.0%	5	3	-40.0%	18	16	-11.1%
ATTEMPTED	0	3	NA	0	2	NA	0	5	NA
ROBBERY	121	109	-9.9%	77	56	-27.3%	198	165	-16.7%
ARMED	98	92	-6.1%	67	43	-35.8%	165	135	-18.2%
STRONG-ARM	23	17	-26.1%	10	13	30.0%	33	30	-9.1%
AGGRAVATED ASSAULT	152	138	-9.2%	76	86	13.2%	228	224	-1.8%
BURGLARY	359	392	9.2%	347	308	-11.2%	706	700	-0.8%
RESIDENTIAL	206	257	24.8%	244	216	-11.5%	450	473	5.1%
COMMERCIAL	153	135	-11.8%	103	92	-10.7%	256	227	-11.3%
LARCENY	1207	1214	0.6%	987	947	-4.1%	2194	2161	-1.5%
FROM AUTO	667	678	1.6%	569	533	-6.3%	1236	1211	-2.0%
BICYCLE	4	5	25.0%	4	2	-50.0%	8	7	-12.5%
SHOPLIFTING	98	90	-8.2%	66	100	51.5%	164	190	15.9%
OTHERS	438	441	0.7%	348	312	-10.3%	786	753	-4.2%
VEHICLE THEFT	310	287	-7.4%	199	178	-10.6%	509	465	-8.6%
ARSON	11	18	63.6%	14	20	42.9%	25	38	52.0%
TOTALS	2173	2178	0.2%	1705	1604	-5.9%	3878	3782	-2.5%
VIOLENT	286	267	-6.6%	158	151	-4.4%	444	418	-5.9%
PROPERTY	1887	1911	1.3%	1547	1453	-6.1%	3434	3364	-2.0%

The data in the district breakdowns does not include a small number of offenses in which the offense location (or reporting location if offense location was unknown) was entered without one of the 12 valid division assignments. Districts are not equal in geographic size, demographics, zoning/development, and other factors that influence the rate of crimes committed in an area. Therefore, the comparison of raw offense totals across districts is **not** advisable.



The data in the district breakdowns does not include a small number of offenses in which the offense location (or reporting location if offense location was unknown) was entered without one of the 12 valid division assignments. Districts are not equal in geographic size, demographics, zoning/development, and other factors that influence the rate of crimes committed in an area. Therefore, the comparison of raw offense totals across districts is **not** advisable.

**Arrests by Charlotte-Mecklenburg Police Department**  
**Year-To-Date: 2005-2006**  
**(Through May)**

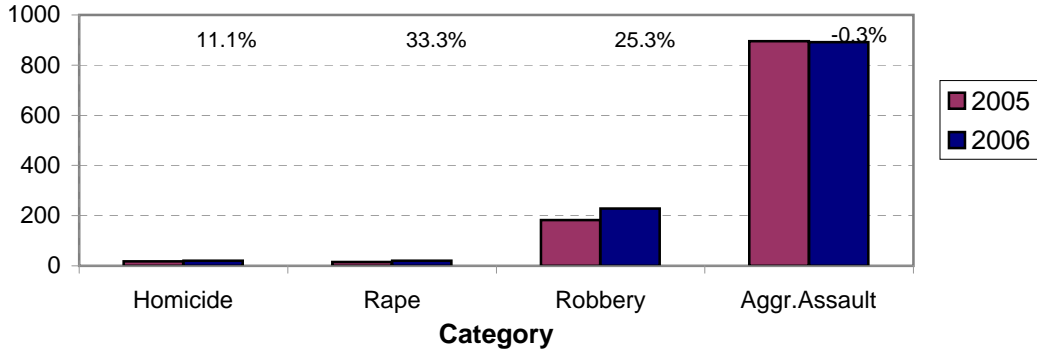
CATEGORY	ADULTS (AGE 18 & OLDER):			JUVENILES ( UNDER 18):			TOTAL ARRESTS:		
	2005 Y-T-D	2006 Y-T-D	% CHANGE	2005 Y-T-D	2006 Y-T-D	% CHANGE	2005 Y-T-D	2006 Y-T-D	% CHANGE
Murder/Non-Negligent Manslaughter	17	20	17.6%	1	0	-100.0%	18	20	11.1%
Negligent & Vehicular Manslaughter	3	1	-66.7%	0	0	NA	3	1	-66.7%
Rape	15	15	0.0%	0	5	NA	15	20	33.3%
Robbery	136	153	12.5%	46	75	63.0%	182	228	25.3%
Aggravated Assault	770	751	-2.5%	125	141	12.8%	895	892	-0.3%
Burglary	243	280	15.2%	98	76	-22.4%	341	356	4.4%
Larceny	638	578	-9.4%	210	221	5.2%	848	799	-5.8%
Vehicle Theft	48	37	-22.9%	37	44	18.9%	85	81	-4.7%
Non-Aggravated Assault	801	793	-1.0%	358	334	-6.7%	1159	1127	-2.8%
Arson	1	7	600.0%	16	14	-12.5%	17	21	23.5%
Forgery/Counterfiet	63	64	1.6%	2	0	-100.0%	65	64	-1.5%
Fraud	224	263	17.4%	1	4	300.0%	225	267	18.7%
Embezzlement	27	40	48.1%	1	2	100.0%	28	42	50.0%
Stolen Property	200	233	16.5%	55	64	16.4%	255	297	16.5%
Vandalism	82	114	39.0%	89	110	23.6%	171	224	31.0%
Weapons	239	334	39.7%	35	29	-17.1%	274	363	32.5%
Prostitution	66	101	53.0%	1	1	0.0%	67	102	52.2%
Sex Offenses	73	86	17.8%	12	5	-58.3%	85	91	7.1%
Drugs	1096	1366	24.6%	116	171	47.4%	1212	1537	26.8%
Gambling	2	2	0.0%	0	0	NA	2	2	0.0%
Offenses vs. Family	4	3	-25.0%	0	0	NA	4	3	-25.0%
DUI	861	834	-3.1%	5	7	40.0%	866	841	-2.9%
Liquor	63	77	22.2%	5	2	-60.0%	68	79	16.2%
Disorder.Conduct	217	247	13.8%	169	161	-4.7%	386	408	5.7%
Other Non-Traffic	3276	3771	15.1%	345	485	40.6%	3621	4256	17.5%
<b>VIOLENT INDEX<sup>1</sup></b>	938	939	0.1%	172	221	28.5%	1110	1160	4.5%
<b>PROPERTY INDEX<sup>2</sup></b>	930	902	-3.0%	361	355	-1.7%	1291	1257	-2.6%
<b>INDEX SUBTOTAL</b>	1868	1841	-1.4%	533	576	8.1%	2401	2417	0.7%
<b>PART 2 SUBTOTAL<sup>3</sup></b>	7297	8329	14.1%	1194	1375	15.2%	8491	9704	14.3%
<b>TOTAL</b>	9165	10170	11.0%	1727	1951	13.0%	10892	12121	11.3%

<sup>1</sup>Violent Index includes murder and non-negligent manslaughter, rape, robbery, and aggravated assault.

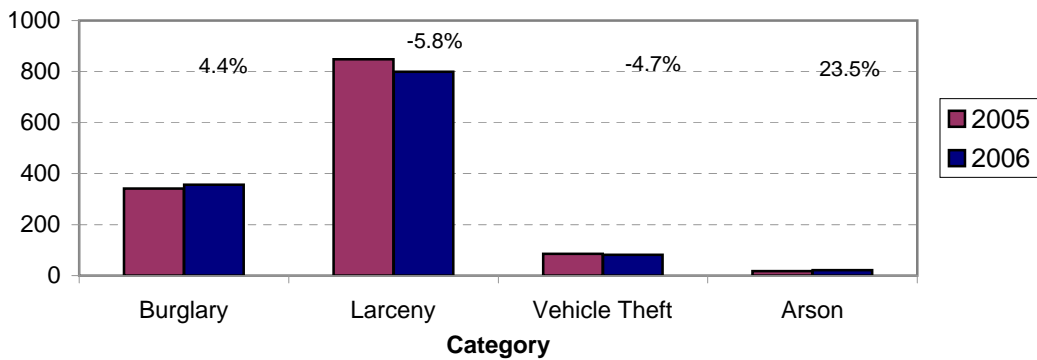
<sup>2</sup>Property Index includes burglary, larceny, vehicle theft, and arson.

<sup>3</sup>Part 2 crimes include crime categories not counted in the Index totals.

**Violent Index Arrests Year-to-Date  
Charlotte-Mecklenburg Police Department: 2005-2006  
(Through May)**

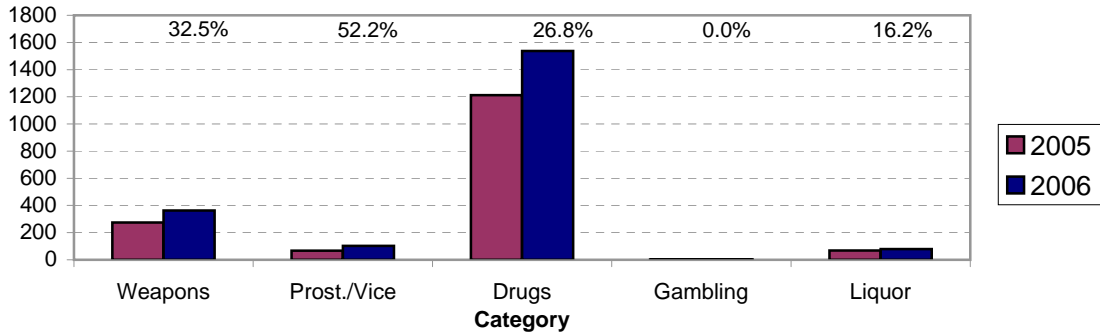


**Property Index Arrests Year-to-Date  
Charlotte-Mecklenburg Police Department: 2004-2005  
(Through May)**

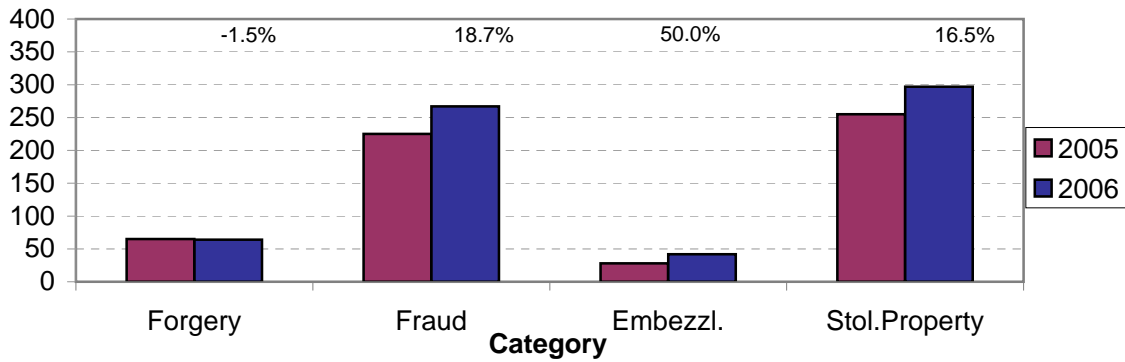




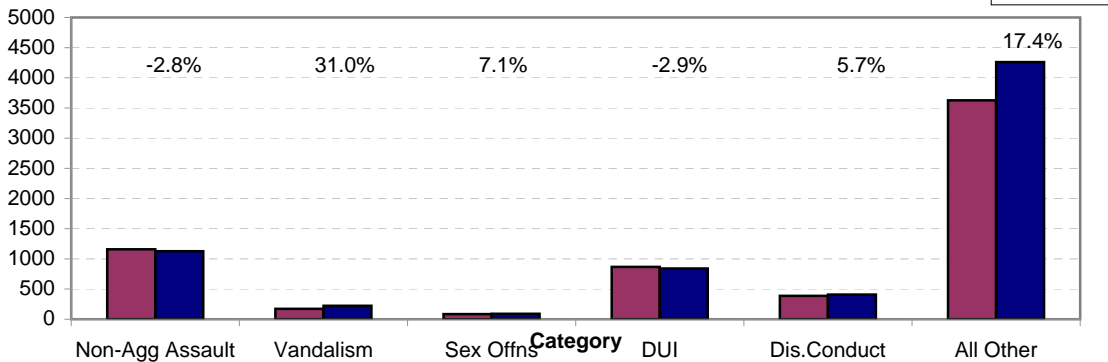
**Arrests for Vice/CCW/Drugs/Etc. Year-to-Date  
Charlotte-Mecklenburg Police Department: 2005- 2006  
(Through May)**



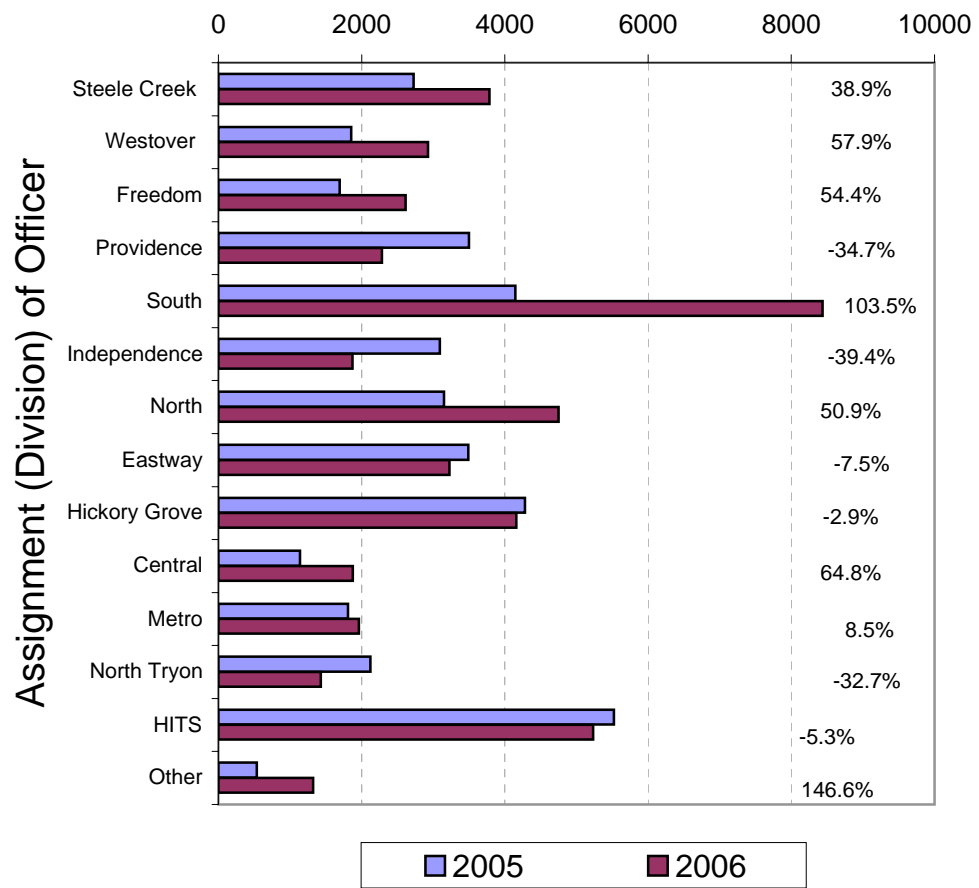
**Arrests for Property/White Collar Crime Year-to-Date  
Charlotte-Mecklenburg Police Department: 2005- 2006  
(Through May)**



**Arrests for Other Categories Year-to-Date  
Charlotte-Mecklenburg Police Department: 2005 - 2006  
(Through May)**



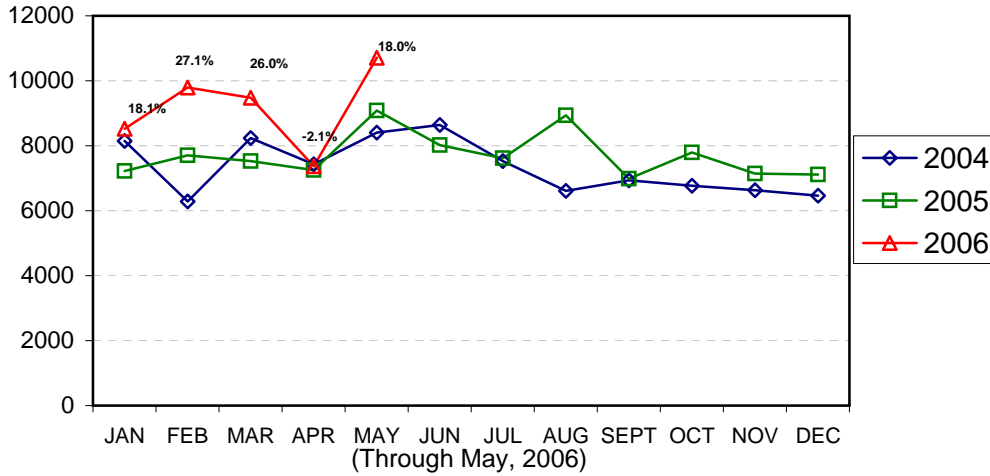
**Citations Issued Year-to-Date by CMPD Divisions  
2005 - 2006  
(Through May, 2006)**



<b>Citations Issued by the Charlotte Mecklenburg Police Officers Year-to-Date (Through May, 2006)</b>			
	<b>2005</b>	<b>2006</b>	<b>% Change</b>
Hazardous	17,076	18,785	10.0%
Non-Hazardous	15,425	18,731	21.4%
Other City/State Statute/Ordinance	6,555	8,360	27.5%
<b>Total</b>	<b>39,056</b>	<b>45,876</b>	<b>17.5%</b>

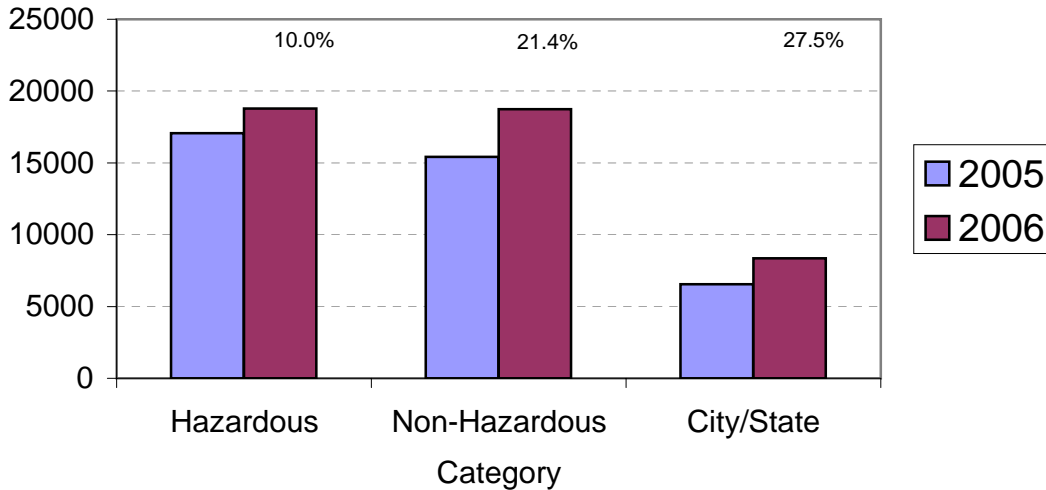
<b>"Safe Speed" Program: 2005-2006 (Through May, 2006)</b>			
	<b>2005</b>	<b>2006</b>	<b>% Change</b>
Total Citations	15431	14637	-5%
(Citations issued through the "Safe Speed" program are <b>not</b> included in the CMPD citation totals used in the summary chart above or in the other citation charts.)			

### Total Citation Enforcement by Month Charlotte-Mecklenburg Police Dept.: 2004-2006

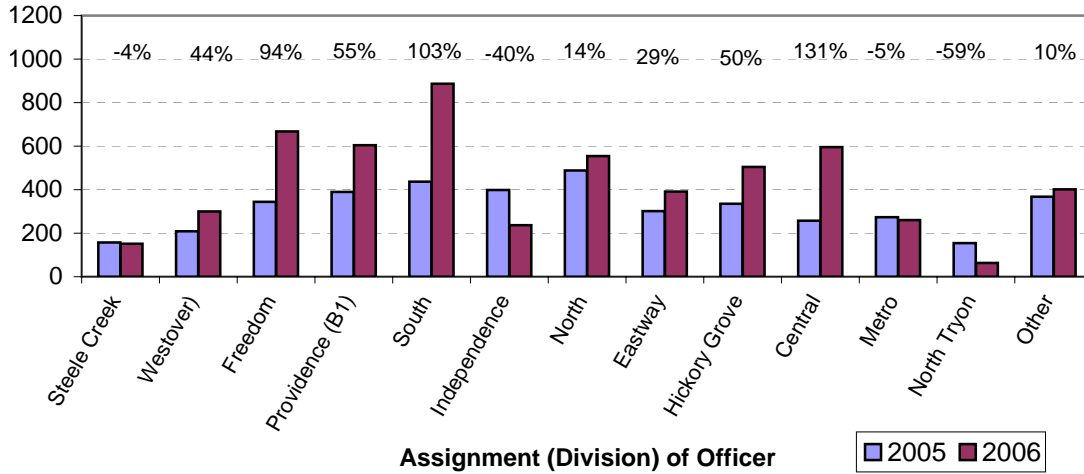


(Includes Hazardous, Non-Hazardous, and City/State Citations; percentages are current month compared to same month in previous year. Percentages are the change from current month to same month in past year. Monthly totals may be affected by data entry delays.)

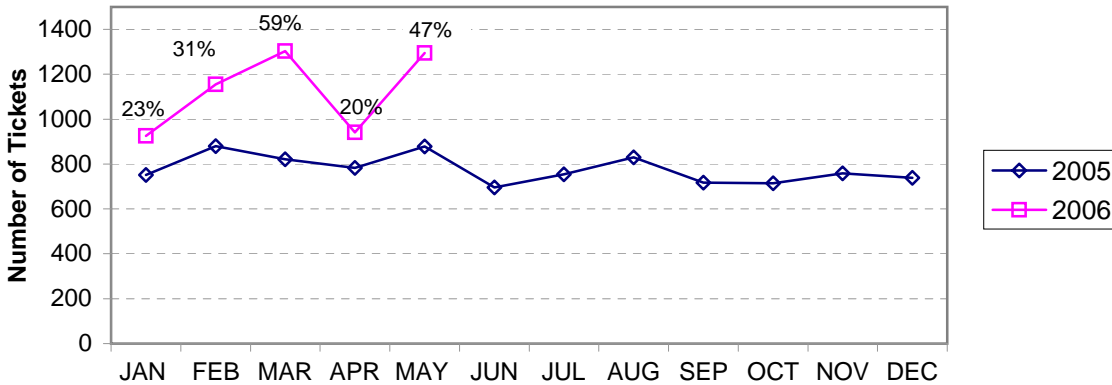
### CMPD Citation Enforcement by Category Year-to-Date, 2005 - 2006 (Through May, 2006)



**Warning Ticket Violations Issued by Division  
Charlotte-Mecklenburg Police Department, 2005- 2006  
Through May, 2006**



**Total Warning Ticket Violations Issued by Month  
Charlotte-Mecklenburg Police Department: 2005 - 2006**



**Warning Tickets Issued Year-to-Date  
Charlotte-Mecklenburg Police Department  
Through May, 2006**

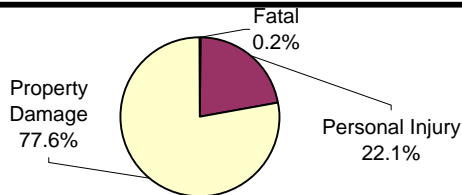
	2005	2006	% Change
Total Warning Tickets	4115	5618	36.5%

**Traffic Collision Reports  
Charlotte-Mecklenburg Police Department  
Year-to-Date: 2005-2006  
(Through May)**

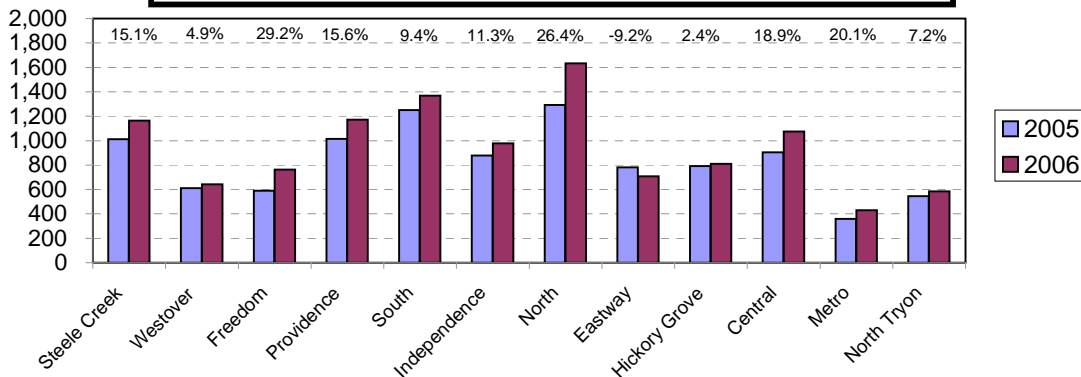
<u>Type</u>	<u>2005</u>	<u>2006</u>	<u>% Change</u>
Fatal Collisions	19	27	42.1%
Vehicle Occupants Killed	17	24	41.2%
Pedestrians Killed	3	5	66.7%
Personal Injury Collisions	2416	2527	4.6%
Property Damage Collisions	7639	8842	15.7%
Total Collisions	10074	11396	13.1%

\* The number of fatal collisions and the number of persons killed (fatalities) in those incidents is taken from the HITS file. Their records are updated for deaths that occur after the initial report is filed. Figures for 2005 may be adjusted after publication of 2005 Annual Report.

**Traffic Collisions Reported by Type  
Charlotte-Mecklenburg Police Department:  
2006 Year-to-Date  
(Through May)**



**Traffic Collisions Reported by Charlotte-Mecklenburg Police Dept.  
Year-to-Date By Location (Division) : 2005 -2006  
(Through May)**



**CITIZEN-INITIATED CALLS FOR SERVICE<sup>1</sup> BY TYPE  
CHARLOTTE-MECKLENBURG POLICE DEPARTMENT**

<u>Type of Call<sup>2</sup></u>	<u>2005 Year-to-Date Through May</u>	<u>2006 Year-to-Date Through May</u>	<u>Year-to-Date % Change</u>
ABC RELATED	882	906	2.7%
ACCIDENT	14455	14752	2.1%
ALARM	13251	14017	5.8%
ANIMAL CONTROL <sup>3</sup>	99	116	17.2%
ASSAULT	1865	1925	3.2%
ASSAULT WITH DEADLY WEAPON	653	692	6.0%
ASSIST OTHER AGENCY	3339	3570	6.9%
BOMB THREAT	42	43	2.4%
BREAK/ENTER	7299	8262	13.2%
CDCP CLINICIAN VISIT	0	235	NA
COMMUNICATING THREATS	1460	1423	-2.5%
COUNTY SECURITY <sup>3</sup>	5	4	-20.0%
CRIMINAL INTELLIGENCE	3	7	133.3%
CRITICAL INCIDENT	0	12	NA
DAMAGE TO PROPERTY	3402	3187	-6.3%
DEATH	122	128	4.9%
DISTURBANCE	10313	11371	10.3%
DOMESTIC INCIDENT	14921	14816	-0.7%
DRUG RELATED	1552	1693	9.1%
EXTORTION/BLACKMAIL	0	1	NA
FIGHT	1389	1512	8.9%
FIRE	4	6	50.0%
FIRE CASE	27	34	25.9%
FRAUD/FORGERY	1272	1552	22.0%
GAMBLING	8	8	0.0%
HARASSMENT	861	693	-19.5%
HIT AND RUN	2995	3111	3.9%
JUVENILE RELATED	1187	1138	-4.1%
KIDNAPPING	92	95	3.3%
LAKE ENFORCEMENT	20	7	-65.0%
LARCENY	12007	11518	-4.1%
LOITERING	1904	2183	14.7%
MAJOR INCIDENT	9	4	-55.6%
MISSING PERSON	3049	3206	5.1%
NOISE COMPLAINT	5839	6061	3.8%
OFFENSE AGAINST FAMILY	2	14	600.0%
OFFICER CALLED IN	296	250	-15.5%
OVERDOSE	180	49	-72.8%
PORNOGRAPHY	2	8	300.0%
PROPERTY	2522	2926	16.0%
PROSTITUTION	450	483	7.3%
PUBLIC SERVICE	8929	8085	-9.5%
QUALITY OF LIFE	507	698	37.7%
ROBBERY	1369	1287	-6.0%
SEX CRIME	439	508	15.7%
SPECIAL SERVICE REQUEST	3	3	0.0%
SUICIDE	483	531	9.9%
SUSPICIOUS PERSON	8087	8440	4.4%
TRAFFIC RELATED	4401	4659	5.9%
TRESPASS	1666	1607	-3.5%
VEHICLE RELATED	14101	14329	1.6%
VIOLENT CRIMES TASK FORCE	1	1	0.0%
WARRANT RELATED	1508	1359	-9.9%
WEAPON RELATED	3013	3552	17.9%
ZONE CHECK-ADVISED EVENT	0	3	NA
911 HANG UP / CALLBACK	10449	7993	-23.5%
<b>TOTAL</b>	<b>162734</b>	<b>165073</b>	<b>1.4%</b>

<sup>1</sup>These totals exclude duplicate and cancelled calls for service; they include calls handled by the Crime Reporting Unit as well as by division field officers, detectives and related CMPD staff.

<sup>2</sup>The type of call is determined from the 911 call, unless updated by an officer assigned to respond.

<sup>3</sup>In this summary, calls to Animal Control, Mecklenburg County Security, or Davidson Police are not included unless they also involve the dispatching of C-MPD field officers or detectives.

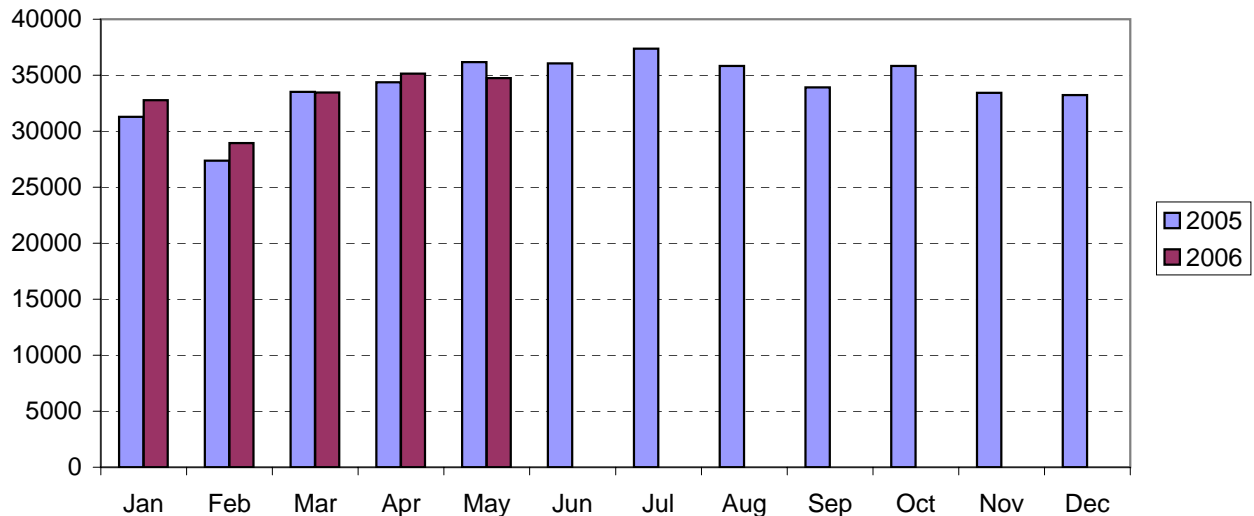
**CITIZEN-INITIATED CALLS FOR SERVICE BY ORIGINATING CMPD DIVISION<sup>1,2</sup>**  
 (Based on District of Call Origination, Not on Assigned District of Responding Units)

<u>District</u>	<u>2005 Year-to-Date Through May</u>	<u>2006 Year-to-Date Through May</u>	<u>Year-to-Date % Change</u>
Central-01 (D1)	10434	10318	-1.1%
Metro-02 (D2)	9125	9384	2.8%
Eastway-06 (C2)	12036	11689	-2.9%
North Tryon-07 (D3)	9789	10125	3.4%
North-11 (C1)	19750	21870	10.7%
Hickory Grove-12 (C3)	14898	15402	3.4%
Providence-16 (B1)	11292	11125	-1.5%
Independence-17 (B3)	14369	14287	-0.6%
Steele Creek-21 (A1)	14077	14546	3.3%
South-22 (B2)	15001	14668	-2.2%
Westover-26 (A2)	11023	11726	6.4%
Freedom-27 (A3)	16137	17099	6.0%

<sup>1</sup>These totals exclude duplicate and cancelled calls for service; they include calls handled by the Crime Reporting Unit as well as by division field officers, detectives and other CMPD staff.

<sup>2</sup>Calls where the location could not be assigned to one of the divisions are not included in this chart.

**Citizen-Initiated Calls for Service<sup>1</sup> by Month**  
**Charlotte-Mecklenburg Police Department: 2005-2006**



<sup>1</sup>These totals exclude duplicate and cancelled calls for service; they include calls handled by the Crime Reporting Unit as well as by division field officers, detectives and other CMPD staff.

## Uniform Crime Reporting Procedures

The Charlotte-Mecklenburg Police Department reports offense and arrest statistics in accordance with standard Uniform Crime Reporting (UCR) guidelines. UCR policy states that any adjustments to previous months can be made on the current month's report:

...In tabulating crime counts, an agency may find that offense totals for past months require adjustments due to developments in the investigation or other handling of the matter. It may be necessary to adjust totals reported to UCR for the past month or prior months. Needed adjustments can be made on the current month's report and do not affect the reliability of the figures in that such adjustments tend to equalize each other from month to month over a period of time.

- *Uniform Crime Reporting Handbook*, FBI, 1984, p. 42-43

We are required to report crime monthly to the UCR program, and we do therefore make an effort to process monthly changes in a timely manner. However, occasionally due to the review and processing required for reclassifying, unfounding or clearing cases, the current month's totals may reflect the processing of a backlog of these changes from previous months.

Users of the data are cautioned that conclusions about substantial changes in crime trends or in clearance rates based on only a single month's data or trend may reflect some of these adjustments. For this reason, in addition to the monthly and year-to-date trends on Page 1, the monthly report routinely includes a comparison for the previous 12 months (p. 4), as well as graphs that provide seasonal/monthly comparisons over a five-year period (p. 5-8).

### UCR Definitions and Terms:

**Index Crime:** the eight offenses that the national UCR program tracks on a yearly basis to gauge trends in the extent of crime, despite differences among state and local criminal statutes. These offenses were selected on the basis of several factors: seriousness, frequency of occurrence, pervasiveness in all geographic areas, and/or likelihood of being reported to law enforcement.

**Violent Index:** includes the offenses of murder/non-negligent manslaughter, rape, robbery, and aggravated assault

**Property Index:** includes the offenses of burglary, larceny, vehicle theft and arson

**Murder/non-negligent manslaughter:** the willful killing of one human being by another

**Rape:** the carnal knowledge of a female forcibly and against her will [Note: This offense does not include other sex offenses or statutory (non-forcible) rape.]

**Robbery:** the taking or attempt to take anything of value from the care, custody, or control of a person or persons by force, threat of force or violence, or by putting the victim in fear.

**Aggravated assault:** an unlawful attack by one person on another for the purpose of inflicting severe or aggravated bodily injury; includes 1) all assaults in which a weapon of any type is used or is threatened to be used and/or 2) all assaults where serious injury occurs.

**Burglary:** the unlawful entry or attempted entry of a structure to commit a felony or a theft

**Larceny-Theft:** the unlawful taking (or attempt), carrying, leading, or riding away of property from the possession or constructive possession of another [Note: Larceny/theft of a motor vehicle is classed separately.]

**Vehicle Theft:** the theft or attempted theft of a motor vehicle (a self-propelled vehicle that runs on land and not on rails, excluding farm and construction equipment)



Arson: the willful or malicious burning or attempt to burn, with or without intent to defraud, a structure, motor vehicle, personal property of another, etc.

Hierarchy rule: For cases involving multiple-offenses, the incident is classified and counted based on the highest offense on a hierarchy of crimes established by UCR. For example, for an incident involving a rape and a burglary, the incident would be counted in the rape category because rape is higher than burglary on the hierarchy.

Clearance: A case is considered cleared when either at least one arrest is made for the offense or when an offender's identity is established by investigation but the offender will not be arrested for reasons outside law enforcement control (offender dies, victim refuses to prosecute, district attorney declines prosecution, extradition is refused, etc.).

Unfounding: A case is "unfounded" and subtracted from the crime counts when investigation establishes that the incident did not actually occur or that the actions within the incident are not criminal based on current law.

For additional information, please consult the *UCR Handbook* on the FBI website at <http://www.fbi.gov/ucr/ucr.htm>.

This report was compiled by the Research, Planning, and Analysis Division.

We make an effort to present the most accurate information available at the time this report is published. Please notify the Research, Planning, and Analysis office if you have any questions about the data in this report or about an error that was missed in proofing the report.