



---

**CHARLOTTE-MECKLENBURG POLICE DEPARTMENT  
MONTHLY SUMMARY REPORT  
SEPTEMBER, 2006**

---

---

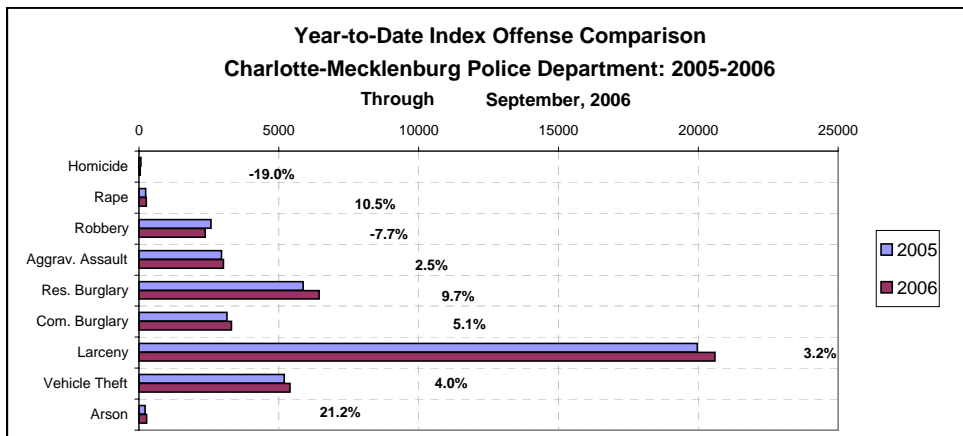
**Darrel Stephens  
Chief of Police**

---

**INDEX OFFENSES REPORTED TO CHARLOTTE-MECKLENBURG POLICE DEPARTMENT**

September, 2006 INDEX OFFENSES	# THIS MONTH	% OF ALL INDEX	# LAST MONTH	MONTHLY % CHANGE	SAME MONTH LAST YEAR	MONTHLY % CHANGE	THIS YEAR TO DATE	LAST YEAR TO DATE	ANNUAL % CHANGE
HOMICIDE (MURDER & NON- NEGLIGENT MANSLAUGHTER)*	5	0.1%	7	-28.6%	4	25.0%	51	63	-19.0%
RAPE TOTAL	29	0.6%	31	-6.5%	32	-9.4%	264	239	10.5%
ACTUAL	27	0.5%	29	-6.9%	32	-15.6%	241	227	6.2%
ATTEMPT	2	0.0%	2	0.0%	0	NA	23	12	91.7%
ROBBERY TOTAL	308	6.2%	300	2.7%	344	-10.5%	2373	2572	-7.7%
ARMED	249	5.0%	243	2.5%	290	-14.1%	1889	2104	-10.2%
STRONG-ARM	59	1.2%	57	3.5%	54	9.3%	484	468	3.4%
AGGRAVATED ASSAULT TOTAL	341	6.9%	352	-3.1%	361	-5.5%	3026	2951	2.5%
BURGLARY TOTAL	1105	22.3%	1220	-9.4%	946	16.8%	9773	9020	8.3%
RESIDENTIAL	751	15.2%	818	-8.2%	638	17.7%	6444	5872	9.7%
COMMERCIAL	354	7.2%	402	-11.9%	308	14.9%	3309	3148	5.1%
*****									
FORCE	889	18.0%	971	-8.4%	756	17.6%	7876	7315	7.7%
NO FORCE	133	2.7%	151	-11.9%	141	-5.7%	1166	1145	1.8%
ATTEMPT	83	1.7%	98	-15.3%	49	69.4%	731	559	30.8%
LARCENY TOTAL	2490	50.4%	2568	-3.0%	2147	16.0%	20597	19960	3.2%
\$200 AND OVER	1281	25.9%	1343	-4.6%	1065	20.3%	10563	9826	7.5%
\$50 TO \$200	461	9.3%	504	-8.5%	460	0.2%	3935	3966	-0.8%
UNDER \$50	748	15.1%	721	3.7%	622	20.3%	6099	6168	-1.1%
*****									
FROM AUTO	1354	27.4%	1403	-3.5%	1006	34.6%	10856	9926	9.4%
BICYCLE	38	0.8%	46	-17.4%	26	46.2%	211	184	14.7%
SHOPLIFTING	187	3.8%	187	0.0%	225	-16.9%	1958	1954	0.2%
OTHERS	949	19.2%	932	1.8%	890	6.6%	7610	7896	-3.6%
VEHICLE THEFT TOTAL	641	13.0%	629	1.9%	635	0.9%	5406	5198	4.0%
ARSON TOTAL	26	0.5%	16	62.5%	20	30.0%	269	222	21.2%
TOTALS	4945	100.0%	5123	-3.5%	4489	10.2%	41759	40225	3.8%
VIOLENT PROPERTY	683 4262	13.8% 86.2%	690 4433	-1.0% -3.9%	741 3748	-7.8% 13.7%	5714 36045	5825 34400	-1.9% 4.8%

\*NOTE: These totals include offenses reported to the Charlotte-Mecklenburg Police Department in accordance with the Uniform Crime Reporting (UCR) Program. Cases investigated by the CMPD and classified by UCR guidelines as justifiable homicide or negligent manslaughter are not included in these numbers. See the glossary at the end of this report for the UCR definition of justifiable homicide.

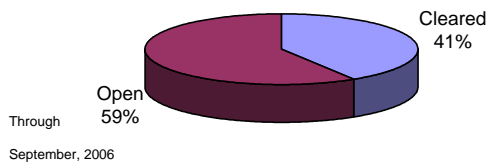


**INDEX CLEARANCES REPORTED BY THE CHARLOTTE-MECKLENBURG POLICE DEPARTMENT**

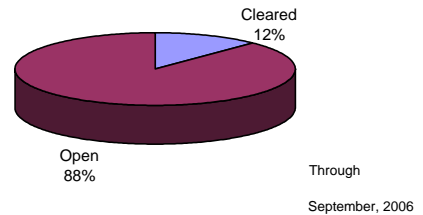
September, 2006 INDEX CLEARANCES	THIS MONTH:		LAST MONTH:		SAME MO. LAST YR:		THIS YEAR TO DATE:		LAST YEAR TO DATE:	
	NO.	%	NO.	%	NO.	%	NO.	%	NO.	%
MURDER & NON-NEGLIGENT MANSLAUGHTER <sup>1</sup>	8	160.0%	1	14.3%	4	100.0%	36	70.6%	28	44.4%
RAPE TOTAL	18	62.1%	22	71.0%	24	75.0%	189	71.6%	201	84.1%
ACTUAL	17	63.0%	21	72.4%	23	71.9%	173	71.8%	168	74.0%
ATTEMPT	1	50.0%	1	50.0%	1	#DIV/0!	16	69.6%	17	141.7%
ROBBERY TOTAL	46	14.9%	72	24.0%	54	15.7%	640	27.0%	558	21.7%
ARMED	33	13.3%	57	23.5%	40	13.8%	498	26.4%	429	20.4%
STRONG-ARM	13	22.0%	15	26.3%	14	25.9%	142	29.3%	129	27.6%
AGGRAVATED ASSAULT TOTAL	190	55.7%	183	52.0%	166	46.0%	1490	49.2%	1484	50.3%
BURGLARY TOTAL	84	7.6%	107	8.8%	142	15.0%	822	8.4%	1200	13.3%
RESIDENTIAL	61	8.1%	66	8.1%	91	14.3%	594	9.2%	838	14.3%
COMMERCIAL	23	6.5%	41	10.2%	61	19.8%	228	6.9%	372	11.8%
LARCENY TOTAL	286	11.5%	290	11.3%	293	13.6%	2910	14.1%	2932	14.7%
FROM AUTO	45	3.3%	45	3.2%	31	3.1%	350	3.2%	388	3.9%
BICYCLE	0	0.0%	4	8.7%	5	19.2%	16	7.6%	30	16.3%
SHOPLIFTING	112	59.9%	109	58.3%	135	60.0%	1251	63.9%	1307	66.9%
OTHERS	129	13.6%	102	10.9%	122	13.7%	1263	16.6%	1207	15.3%
VEHICLE THEFT TOTAL	49	7.6%	58	9.2%	82	12.9%	583	10.8%	842	16.2%
ARSON TOTAL	4	15.4%	5	31.3%	8	40.0%	69	25.7%	54	24.3%
TOTALS	685	13.9%	738	14.4%	773	17.2%	6739	16.1%	7299	18.1%
VIOLENT PROPERTY	262	38.4%	278	40.3%	248	33.5%	2355	41.2%	2271	39.0%
	423	9.9%	460	10.4%	525	14.0%	4384	12.2%	5028	14.6%

<sup>1</sup>NOTE : Clearances are reported in accordance with Uniform Crime Report guidelines. Since clearances are not counted for UCR until they are entered in the Records Management system, any delays in entry of the documentation may result in some clearances being reported later in succeeding months. The 2006 year-to-date clearance rate for Homicide does not yet take into account the adjustment for some cold case clearances that cannot be automatically counted and will be manually added in the final 2006 report.

**Year-to-Date Violent Index Clearance Rate  
Charlotte-Mecklenburg Police Department: 2006**

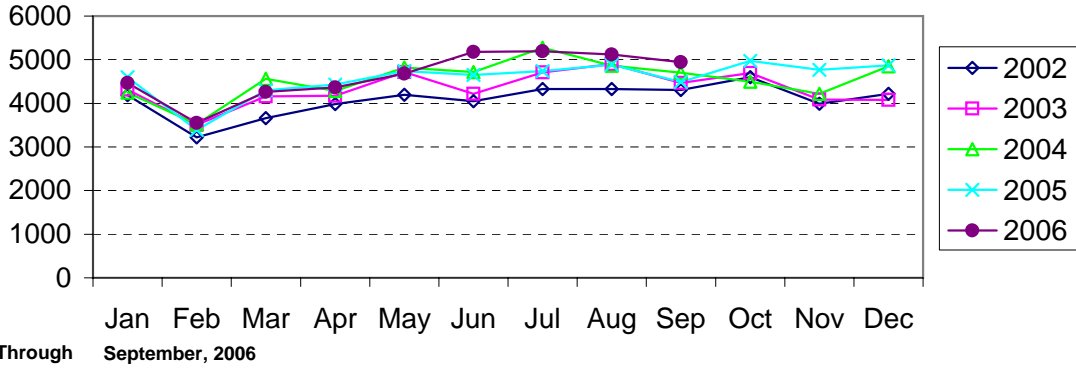


**Year-to-Date Property Index Clearance Rate  
Charlotte-Mecklenburg Police Department: 2006**

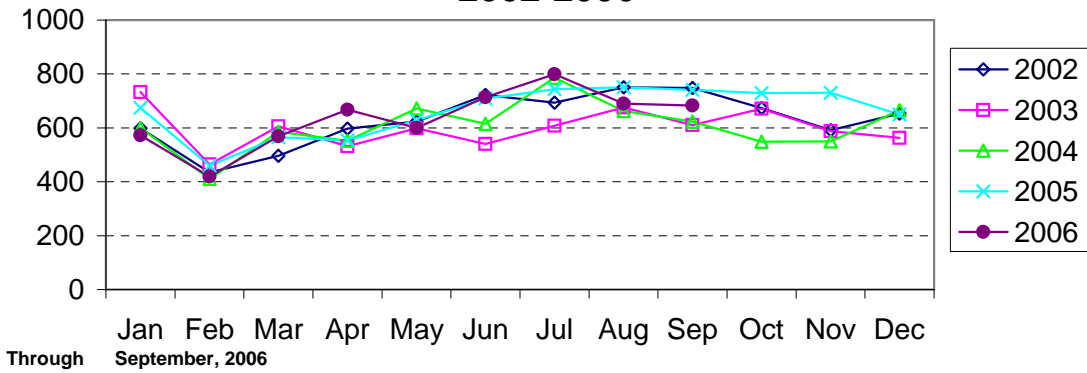


Clearance rates for crime reporting are calculated by dividing the number of crimes cleared during a designated time span by the number of crimes reported in the same period and converting the result to a percentage (multiplying by 100). Since cases from previous reporting periods can be cleared during the designated time span, the rate may be higher than 100%.

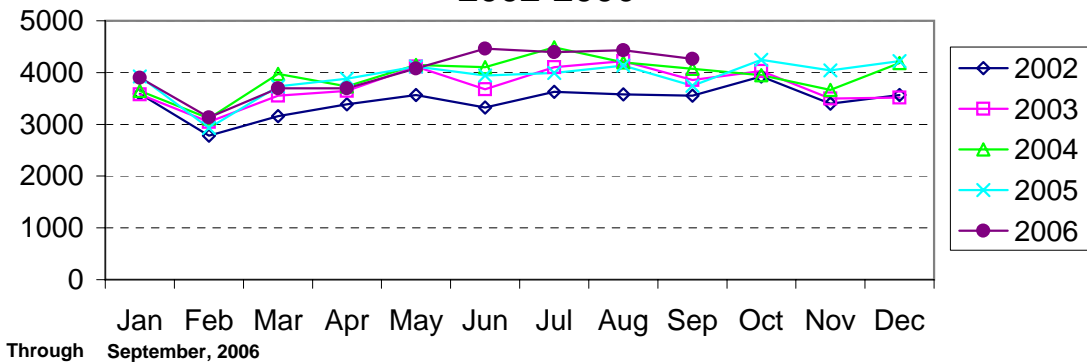
### Index Offenses Reported by Month Charlotte-Mecklenburg Police Department: 2002-2006



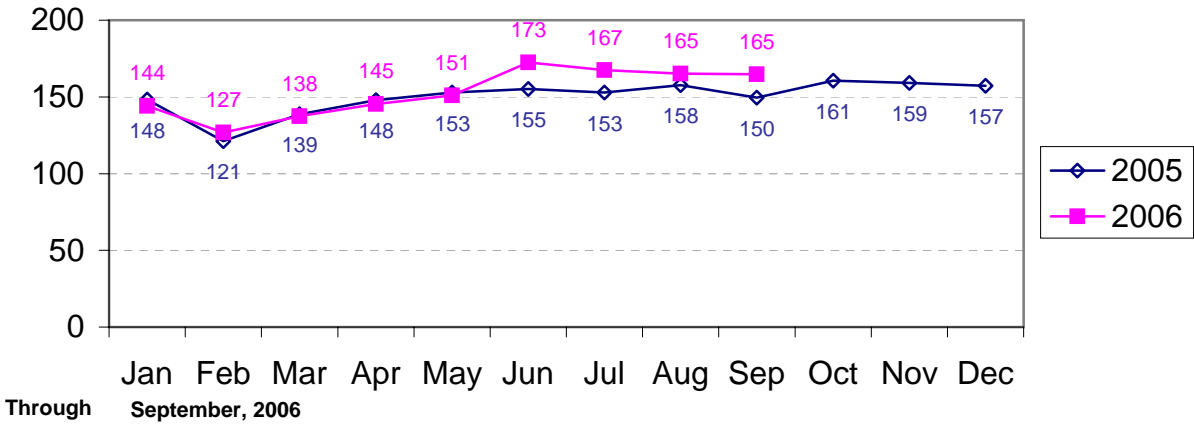
### Violent Index Offenses Reported by Month Charlotte-Mecklenburg Police Department: 2002-2006



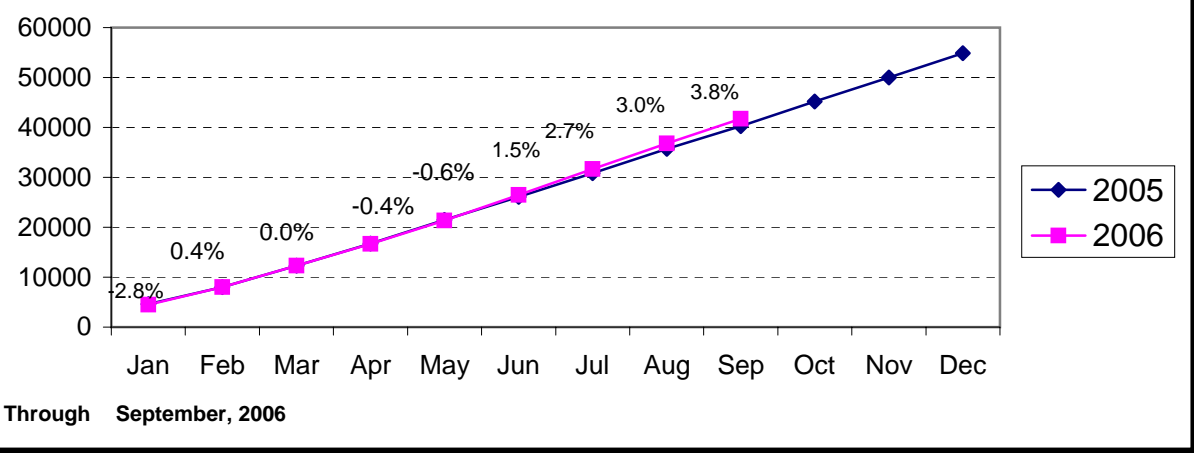
### Property Index Offenses Reported by Month Charlotte-Mecklenburg Police Department: 2002-2006



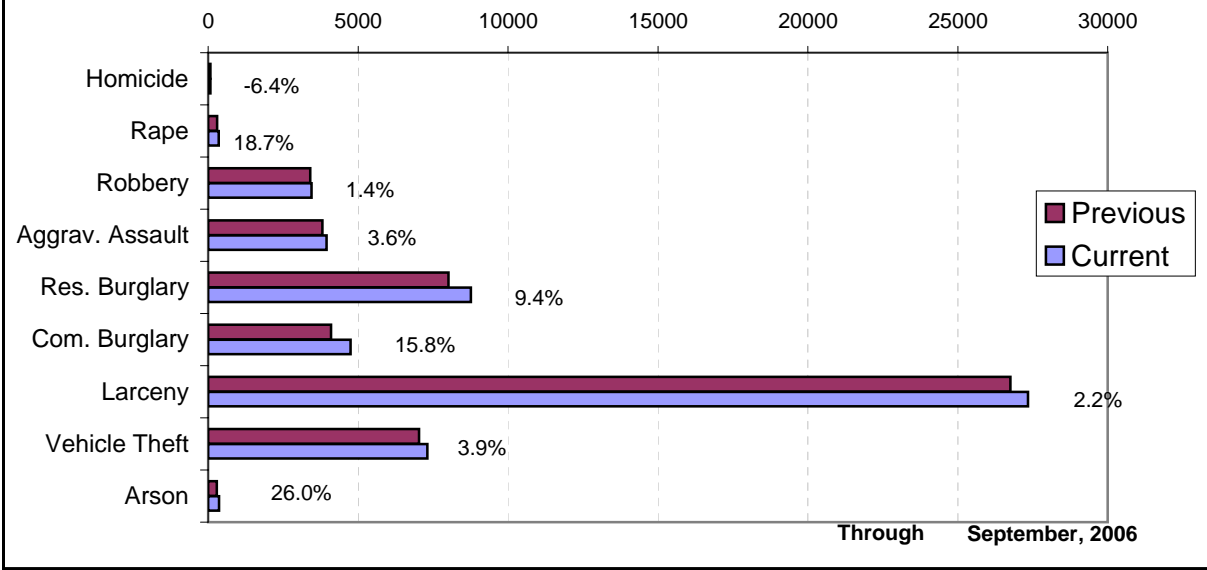
### Index Offense Per Day Average by Month Charlotte-Mecklenburg Police Department: 2005-2006



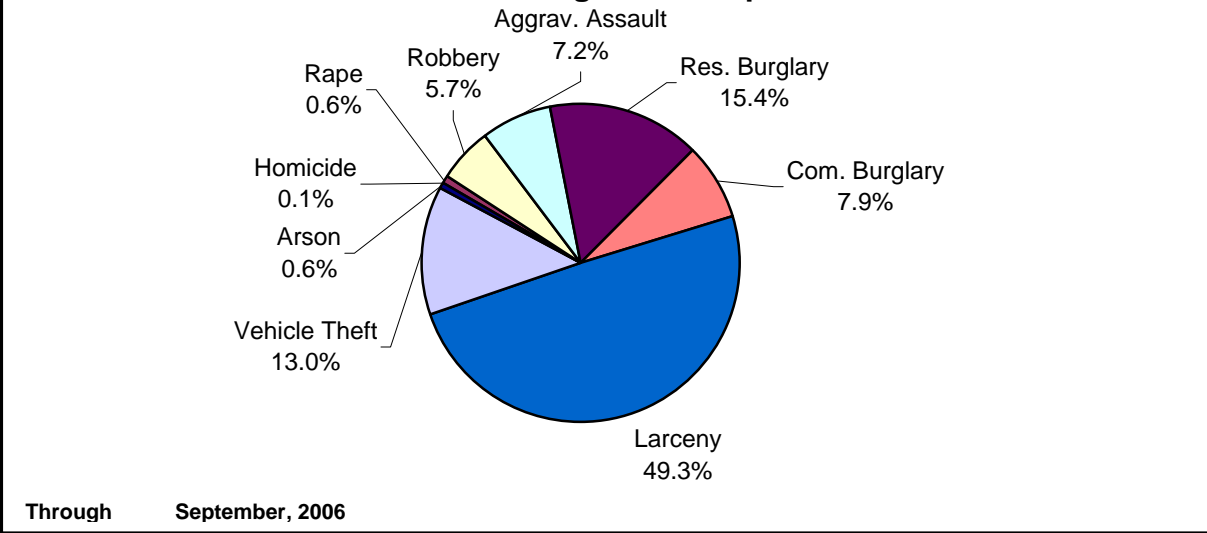
### Index Offenses Year-to-Date Cumulative Totals Charlotte-Mecklenburg Police Department: 2005-2006



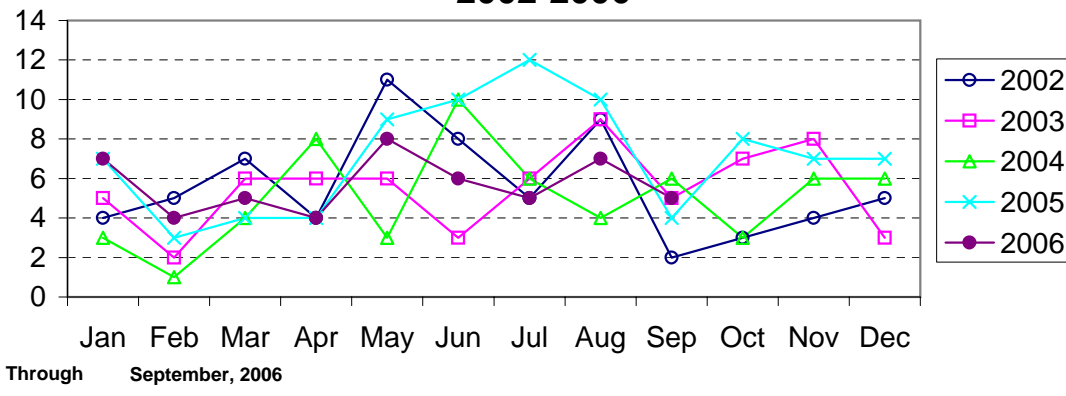
### Index Offenses in Current & Previous 12 Month Periods Charlotte-Mecklenburg Police Department



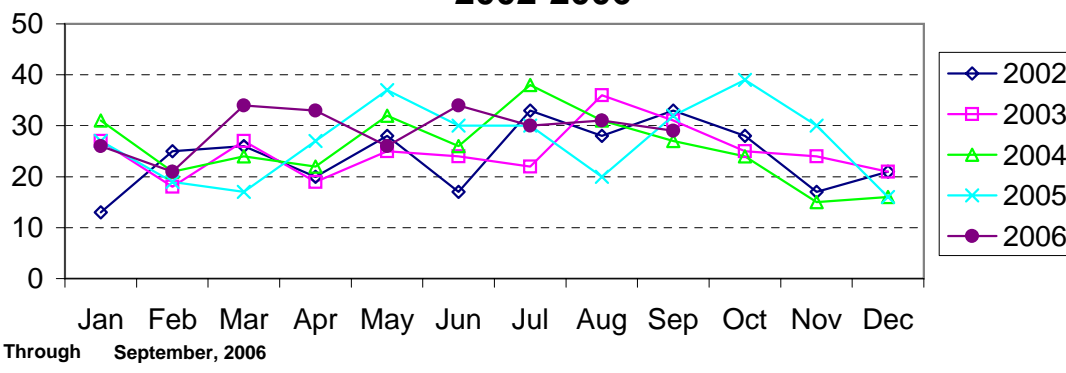
### Year-to-Date Index Offenses by Type Charlotte-Mecklenburg Police Department: 2006



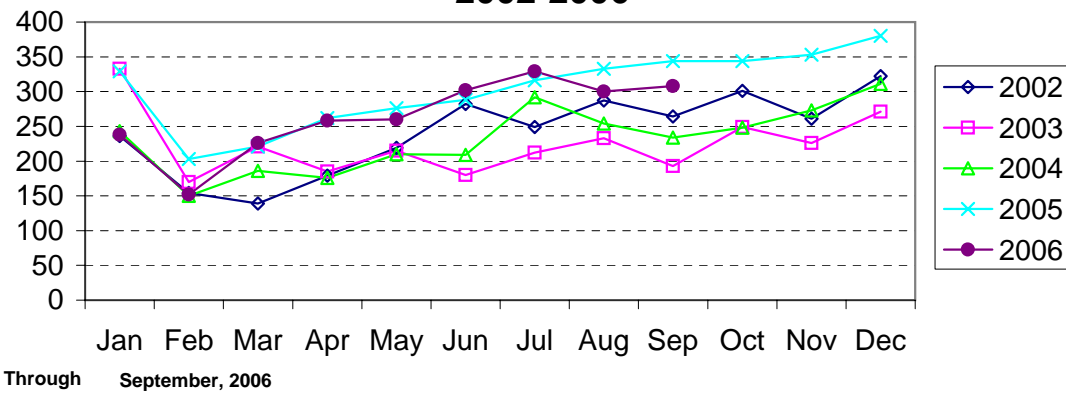
### Homicide Reported by Month Charlotte-Mecklenburg Police Department: 2002-2006



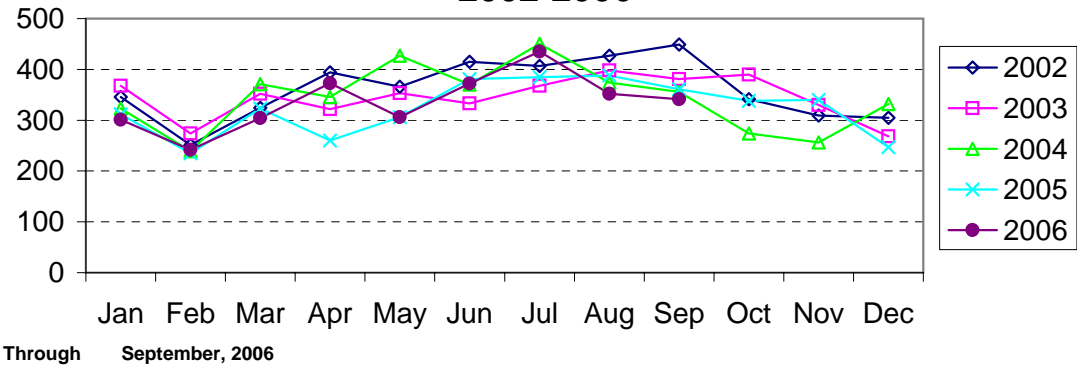
### Rape Reported by Month Charlotte-Mecklenburg Police Department: 2002-2006



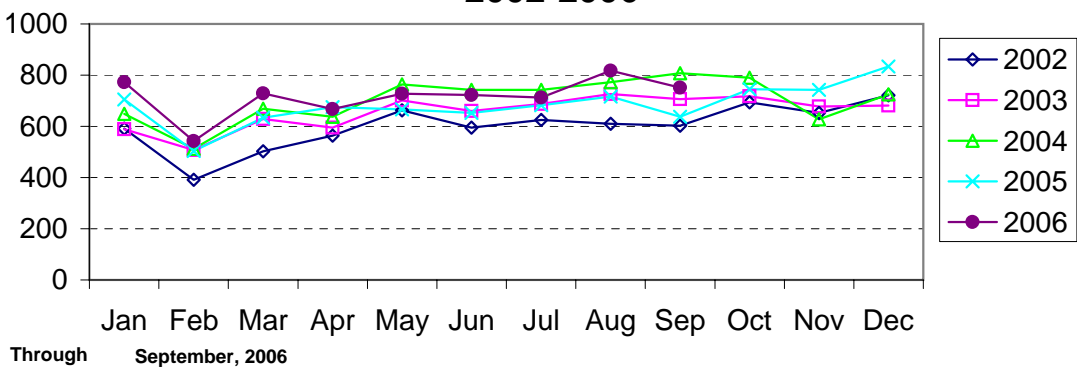
### Robbery Reported by Month Charlotte-Mecklenburg Police Department: 2002-2006



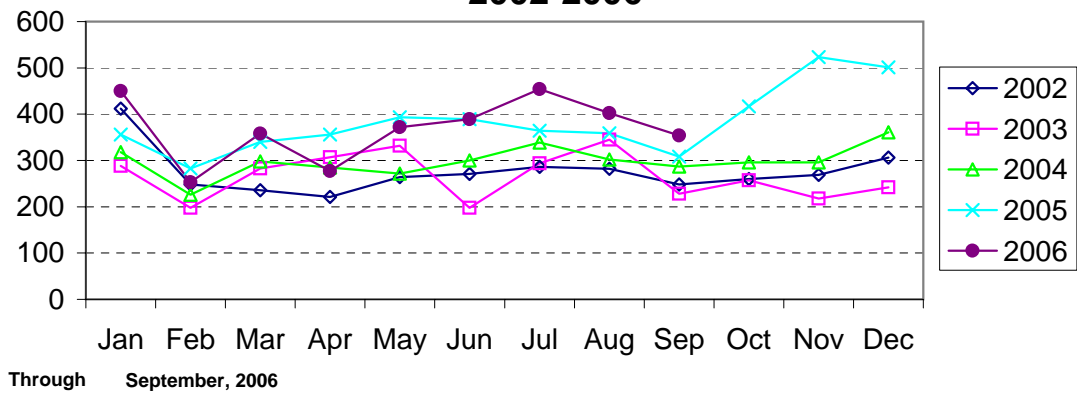
**Aggravated Assault Reported by Month  
Charlotte-Mecklenburg Police Department:  
2002-2006**



**Residential Burglary Reported by Month  
Charlotte-Mecklenburg Police Department:  
2002-2006**

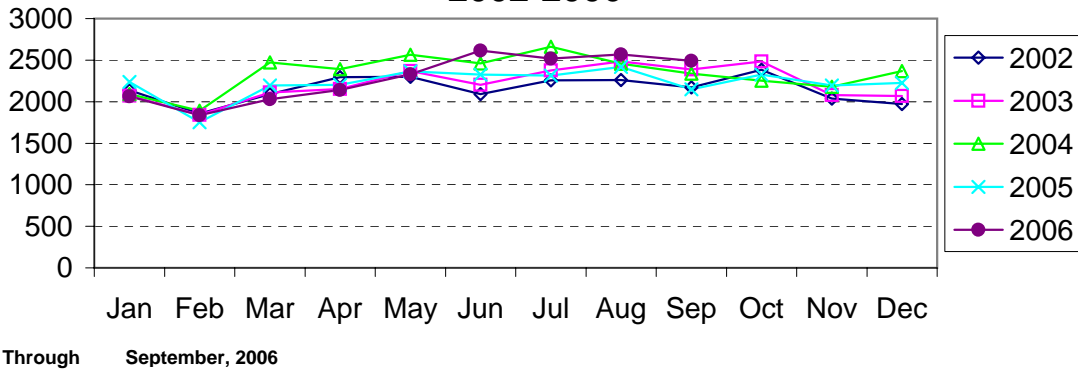


**Commercial Burglary Reported by Month  
Charlotte-Mecklenburg Police Department:  
2002-2006**

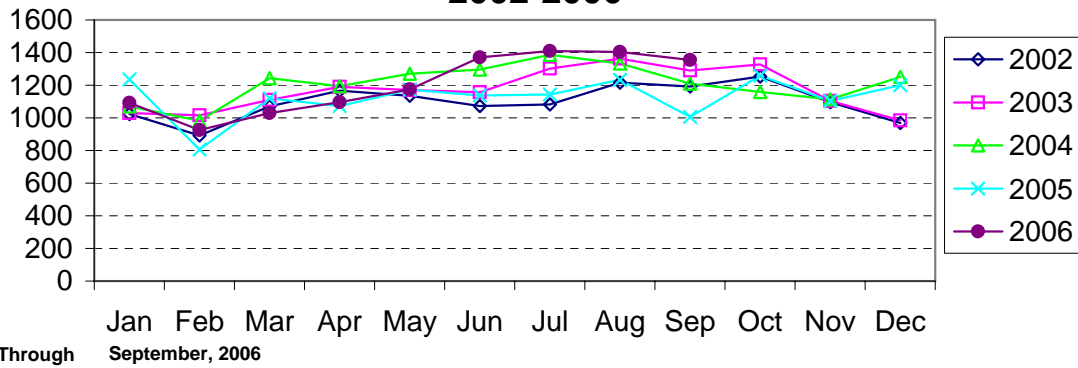




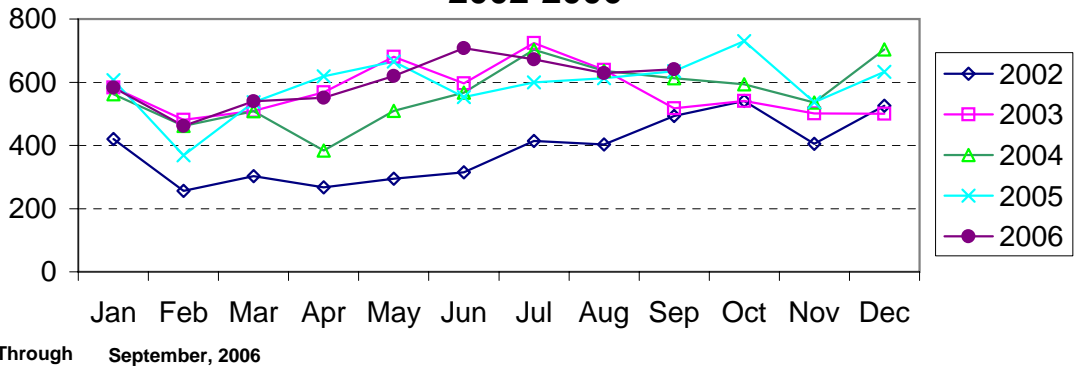
### Larceny Reported by Month Charlotte-Mecklenburg Police Department: 2002-2006



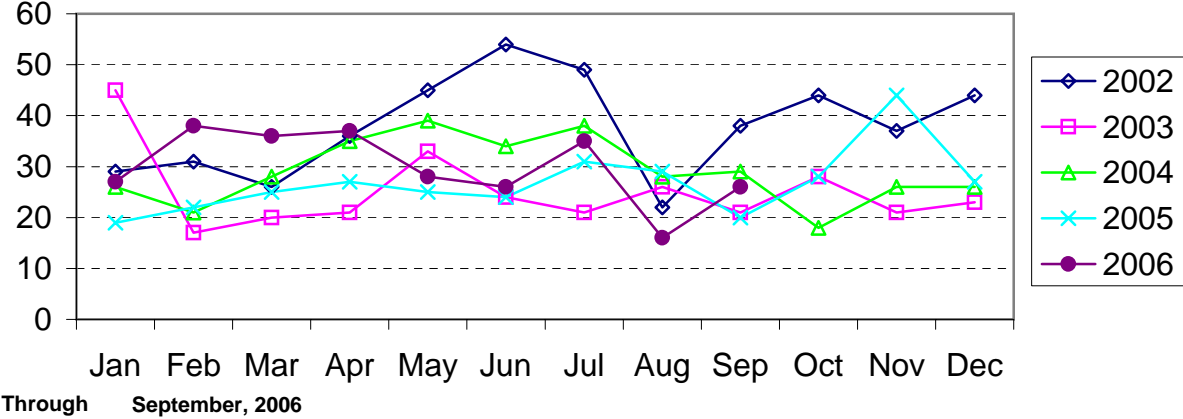
### Larceny from Vehicle Reported by Month Charlotte-Mecklenburg Police Department: 2002-2006



### Vehicle Theft Reported by Month Charlotte-Mecklenburg Police Department: 2002-2006



# Arson Reported by Month Charlotte-Mecklenburg Police Department: 2002-2006



Index Offenses Reported by Division and Service Area of Occurrence									
West Service Area: September, 2005-2006									
INDEX_CATEGORIES	Westover (A2)			Freedom (A3)			West Service Area		
	2005	2006	% Change	2005	2006	% Change	2005	2006	% Change
MURDER & NON-NEGLIGENT MANSLAUGHTER	5	3	-40.0%	10	5	-50.0%	15	8	-46.7%
RAPE	19	22	15.8%	22	27	22.7%	41	49	19.5%
ACTUAL	18	21	16.7%	20	26	30.0%	38	47	23.7%
ATTEMPTED	1	1	0.0%	2	1	-50.0%	3	2	-33.3%
ROBBERY	232	224	-3.4%	343	275	-19.8%	575	499	-13.2%
ARMED	186	173	-7.0%	305	218	-28.5%	491	391	-20.4%
STRONG-ARM	46	51	10.9%	38	57	50.0%	84	108	28.6%
AGGRAVATED ASSAULT	356	408	14.6%	378	436	15.3%	734	844	15.0%
BURGLARY	746	743	-0.4%	1173	1261	7.5%	1919	2004	4.4%
RESIDENTIAL	429	482	12.4%	721	773	7.2%	1150	1255	9.1%
COMMERCIAL	317	261	-17.7%	452	488	8.0%	769	749	-2.6%
LARCENY	1317	1316	-0.1%	1813	2136	17.8%	3130	3452	10.3%
FROM AUTO	626	616	-1.6%	794	983	23.8%	1420	1599	12.6%
BICYCLE	5	22	340.0%	15	16	6.7%	20	38	90.0%
SHOPLIFTING	104	144	38.5%	169	241	42.6%	273	385	41.0%
OTHERS	582	534	-8.2%	835	896	7.3%	1417	1430	0.9%
VEHICLE THEFT	389	521	33.9%	517	604	16.8%	906	1125	24.2%
ARSON	19	17	-10.5%	30	39	30.0%	49	56	14.3%
TOTALS	3083	3254	5.5%	4286	4783	11.6%	7369	8037	9.1%
VIOLENT	612	657	7.4%	753	743	-1.3%	1365	1400	2.6%
PROPERTY	2471	2597	5.1%	3533	4040	14.4%	6004	6637	10.5%

Index Offenses Reported by Division and Service Area of Occurrence									
Southeast Service Area: September, 2005-2006									
INDEX_CATEGORIES	Providence (B1)			Independence (B3)			Southeast Service Area		
	2005	2006	% Change	2005	2006	% Change	2005	2006	% Change
MURDER & NON-NEGLIGENT MANSLAUGHTER	4	4	0.0%	3	3	0.0%	7	7	0.0%
RAPE	13	18	38.5%	20	27	35.0%	33	45	36.4%
ACTUAL	13	16	23.1%	18	24	33.3%	31	40	29.0%
ATTEMPTED	0	2	NA	2	3	50.0%	2	5	150.0%
ROBBERY	97	95	-2.1%	212	217	2.4%	309	312	1.0%
ARMED	76	62	-18.4%	177	187	5.6%	253	249	-1.6%
STRONG-ARM	21	33	57.1%	35	30	-14.3%	56	63	12.5%
AGGRAVATED ASSAULT	101	108	6.9%	226	196	-13.3%	327	304	-7.0%
BURGLARY	698	639	-8.5%	709	881	24.3%	1407	1520	8.0%
RESIDENTIAL	478	411	-14.0%	535	715	33.6%	1013	1126	11.2%
COMMERCIAL	220	228	3.6%	174	166	-4.6%	394	394	0.0%
LARCENY	1439	1553	7.9%	1742	1629	-6.5%	3181	3182	0.0%
FROM AUTO	622	784	26.0%	932	826	-11.4%	1554	1610	3.6%
BICYCLE	15	21	40.0%	14	23	64.3%	29	44	51.7%
SHOPLIFTING	186	199	7.0%	193	176	-8.8%	379	375	-1.1%
OTHERS	616	549	-10.9%	603	604	0.2%	1219	1153	-5.4%
VEHICLE THEFT	237	292	23.2%	565	498	-11.9%	802	790	-1.5%
ARSON	8	9	12.5%	22	14	-36.4%	30	23	-23.3%
TOTALS	2597	2718	4.7%	3499	3465	-1.0%	6096	6183	1.4%
VIOLENT	215	225	4.7%	461	443	-3.9%	676	668	-1.2%
PROPERTY	2382	2493	4.7%	3038	3022	-0.5%	5420	5515	1.8%

The data in the district breakdowns does not include a small number of offenses in which the offense location (or reporting location if offense location was unknown) was entered without one of the 12 valid division assignments. Districts are not equal in geographic size, demographics, zoning/development, and other factors that influence the rate of crimes committed in an area. Therefore, the comparison of raw offense totals across districts is **not** advisable.

Index Offenses Reported by Division and Service Area of Occurrence									
Northeast Service Area: September, 2005-2006									
INDEX_CATEGORIES	North (C1)			Hickory Grove (C3)			Northeast Service Area		
	2005	2006	% Change	2005	2006	% Change	2005	2006	% Change
MURDER & NON-NEGLIGENT MANSLAUGHTER	10	3	-70.0%	7	6	-14.3%	17	9	-47.1%
RAPE	32	46	43.8%	29	20	-31.0%	61	66	8.2%
ACTUAL	29	44	51.7%	27	17	-37.0%	56	61	8.9%
ATTEMPTED	3	2	-33.3%	2	3	50.0%	5	5	0.0%
ROBBERY	191	263	37.7%	225	236	4.9%	416	499	20.0%
ARMED	163	225	38.0%	181	187	3.3%	344	412	19.8%
STRONG-ARM	28	38	35.7%	44	49	11.4%	72	87	20.8%
AGGRAVATED ASSAULT	261	263	0.8%	303	273	-9.9%	564	536	-5.0%
BURGLARY	1115	1512	35.6%	1141	1357	18.9%	2256	2869	27.2%
RESIDENTIAL	742	1044	40.7%	719	895	24.5%	1461	1939	32.7%
COMMERCIAL*	373	468	25.5%	422	462	9.5%	795	930	17.0%
LARCENY	3305	3433	3.9%	1526	1476	-3.3%	4831	4909	1.6%
FROM AUTO	1787	1920	7.4%	807	801	-0.7%	2594	2721	4.9%
BICYCLE	24	63	162.5%	27	27	0.0%	51	90	76.5%
SHOPLIFTING	303	305	0.7%	131	96	-26.7%	434	401	-7.6%
OTHERS	1191	1145	-3.9%	561	552	-1.6%	1752	1697	-3.1%
VEHICLE THEFT	711	745	4.8%	576	524	-9.0%	1287	1269	-1.4%
ARSON	35	37	5.7%	26	29	11.5%	61	66	8.2%
TOTALS	5660	6302	11.3%	3833	3921	2.3%	9493	10223	7.7%
VIOLENT	494	575	16.4%	564	535	-5.1%	1058	1110	4.9%
PROPERTY	5166	5727	10.9%	3269	3386	3.6%	8435	9113	8.0%

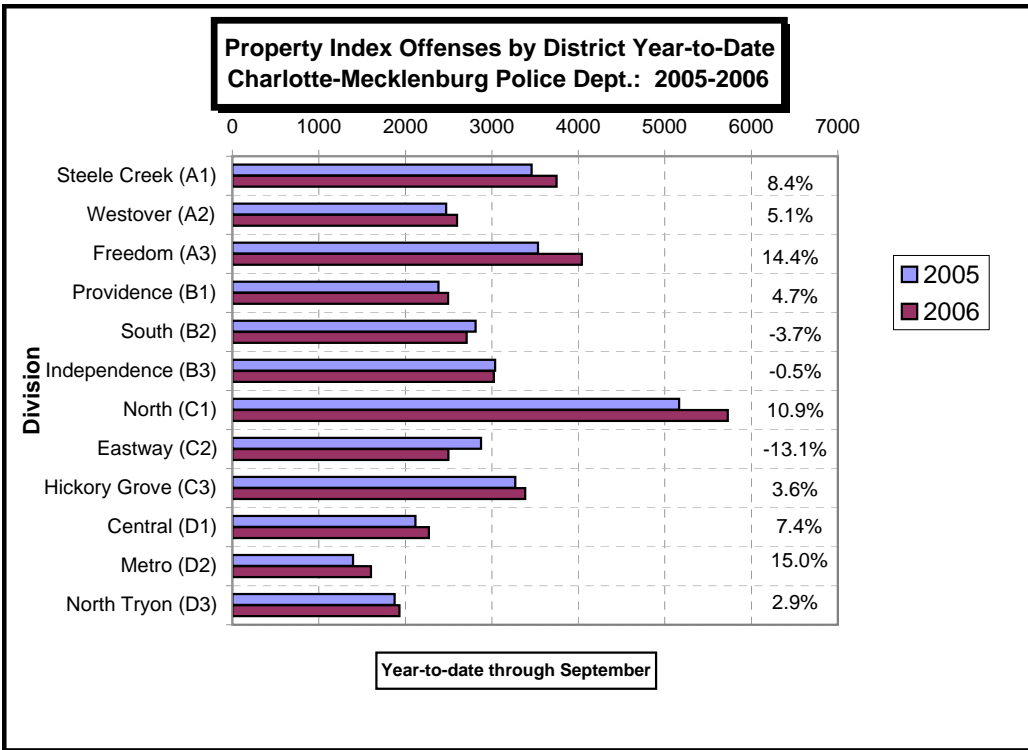
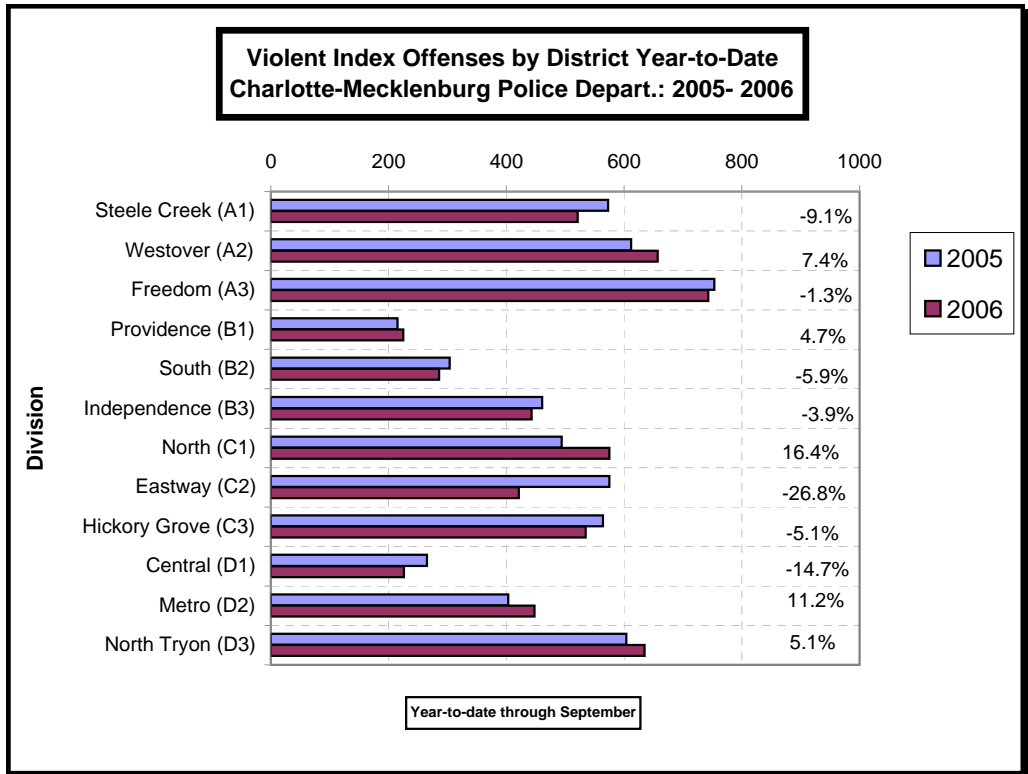
Index Offenses Reported by Division and Service Area of Occurrence									
Central Service Area: September, 2005-2006									
INDEX_CATEGORIES	Central (D1)			Metro (D2)			Central Service Area		
	2005	2006	% Change	2005	2006	% Change	2005	2006	% Change
MURDER & NON-NEGLIGENT MANSLAUGHTER	4	2	-50.0%	7	7	0.0%	11	9	-18.2%
RAPE	26	24	-7.7%	8	17	112.5%	34	41	20.6%
ACTUAL	25	23	-8.0%	9	17	88.9%	34	40	17.6%
ATTEMPTED	1	1	0.0%	-1	0	-100.0%	0	1	NA
ROBBERY	134	106	-20.9%	155	121	-21.9%	289	227	-21.5%
ARMED	84	68	-19.0%	120	91	-24.2%	204	159	-22.1%
STRONG-ARM	50	38	-24.0%	35	30	-14.3%	85	68	-20.0%
AGGRAVATED ASSAULT	101	94	-6.9%	233	303	30.0%	334	397	18.9%
BURGLARY	279	259	-7.2%	439	506	15.3%	718	765	6.5%
RESIDENTIAL	103	98	-4.9%	340	315	-7.4%	443	413	-6.8%
COMMERCIAL	176	161	-8.5%	99	191	92.9%	275	352	28.0%
LARCENY	1560	1665	6.7%	669	767	14.6%	2229	2432	9.1%
FROM AUTO	835	944	13.1%	301	389	29.2%	1136	1333	17.3%
BICYCLE	27	21	-22.2%	10	5	-50.0%	37	26	-29.7%
SHOPLIFTING	49	74	51.0%	23	23	0.0%	72	97	34.7%
OTHERS	649	626	-3.5%	335	350	4.5%	984	976	-0.8%
VEHICLE THEFT	277	334	20.6%	270	317	17.4%	547	651	19.0%
ARSON	0	15	NA	16	13	-18.8%	16	28	75.0%
TOTALS	2381	2499	5.0%	1797	2051	14.1%	4178	4550	8.9%
VIOLENT	265	226	-14.7%	403	448	11.2%	668	674	0.9%
PROPERTY	2116	2273	7.4%	1394	1603	15.0%	3510	3876	10.4%

The data in the district breakdowns does not include a small number of offenses in which the offense location (or reporting location if offense location was unknown) was entered without one of the 12 valid division assignments. Districts are not equal in geographic size, demographics, zoning/development, and other factors that influence the rate of crimes committed in an area. Therefore, the comparison of raw offense totals across districts is **not** advisable.

Index Offenses Reported by Division and Service Area of Occurrence									
East Service Area: September, 2005-2006									
INDEX_CATEGORIES	Eastway (C2)			North Tryon (D3)			East Service Area		
	2005	2006	% Change	2005	2006	% Change	2005	2006	% Change
MURDER & NON-NEGLIGENT MANSLAUGHTER	5	2	-60.0%	4	7	75.0%	9	9	0.0%
RAPE	22	20	-9.1%	8	8	0.0%	30	28	-6.7%
ACTUAL	21	17	-19.0%	7	8	14.3%	28	25	-10.7%
ATTEMPTED	1	3	200.0%	1	0	-100.0%	2	3	50.0%
ROBBERY	330	226	-31.5%	255	260	2.0%	585	486	-16.9%
ARMED	264	183	-30.7%	209	209	0.0%	473	392	-17.1%
STRONG-ARM	66	43	-34.8%	46	51	10.9%	112	94	-16.1%
AGGRAVATED ASSAULT	218	173	-20.6%	337	360	6.8%	555	533	-4.0%
BURGLARY	803	651	-18.9%	604	676	11.9%	1407	1327	-5.7%
RESIDENTIAL	596	482	-19.1%	361	409	13.3%	957	891	-6.9%
COMMERCIAL	207	169	-18.4%	246	267	8.5%	453	436	-3.8%
LARCENY	1644	1434	-12.8%	949	903	-4.8%	2593	2337	-9.9%
FROM AUTO	617	628	1.8%	455	444	-2.4%	1072	1072	0.0%
BICYCLE	20	48	140.0%	5	10	100.0%	25	58	132.0%
SHOPLIFTING	403	257	-36.2%	52	54	3.8%	455	311	-31.6%
OTHERS	604	501	-17.1%	437	395	-9.6%	1041	896	-13.9%
VEHICLE THEFT	413	405	-1.9%	314	333	6.1%	727	738	1.5%
ARSON	16	9	-43.8%	9	18	100.0%	25	27	8.0%
TOTALS	3451	2920	-15.4%	2480	2565	3.4%	5931	5485	-7.5%
VIOLENT	575	421	-26.8%	604	635	5.1%	1179	1056	-10.4%
PROPERTY	2876	2499	-13.1%	1876	1930	2.9%	4752	4429	-6.8%

Index Offenses Reported by Division and Service Area of Occurrence									
South Service Area: September, 2005-2006									
INDEX_CATEGORIES	Steele Creek (A1)			South (B2)			South Service Area		
	2005	2006	% Change	2005	2006	% Change	2005	2006	% Change
MURDER & NON-NEGLIGENT MANSLAUGHTER	4	5	25.0%	0	4	NA	4	9	125.0%
RAPE	26	26	0.0%	12	9	-25.0%	38	35	-7.9%
ACTUAL	26	21	-19.2%	12	7	-41.7%	38	28	-26.3%
ATTEMPTED	0	5	NA	0	2	NA	0	7	NA
ROBBERY	239	231	-3.3%	159	119	-25.2%	398	350	-12.1%
ARMED	204	189	-7.4%	135	97	-28.1%	339	286	-15.6%
STRONG-ARM	35	42	20.0%	24	22	-8.3%	59	64	8.5%
AGGRAVATED ASSAULT	304	259	-14.8%	133	154	15.8%	437	413	-5.5%
BURGLARY	673	706	4.9%	639	578	-9.5%	1312	1284	-2.1%
RESIDENTIAL	407	427	4.9%	443	409	-7.7%	850	836	-1.6%
COMMERCIAL	266	279	4.9%	196	169	-13.8%	462	448	-3.0%
LARCENY	2199	2505	13.9%	1795	1770	-1.4%	3994	4275	7.0%
FROM AUTO	1156	1472	27.3%	993	1044	5.1%	2149	2516	17.1%
BICYCLE	13	16	23.1%	9	11	22.2%	22	27	22.7%
SHOPLIFTING	202	167	-17.3%	139	150	7.9%	341	317	-7.0%
OTHERS	828	850	2.7%	654	565	-13.6%	1482	1415	-4.5%
VEHICLE THEFT	566	507	-10.4%	359	323	-10.0%	925	830	-10.3%
ARSON	21	31	47.6%	20	38	90.0%	41	69	68.3%
TOTALS	4032	4270	5.9%	3117	2995	-3.9%	7149	7265	1.6%
VIOLENT	573	521	-9.1%	304	286	-5.9%	877	807	-8.0%
PROPERTY	3459	3749	8.4%	2813	2709	-3.7%	6272	6458	3.0%

The data in the district breakdowns does not include a small number of offenses in which the offense location (or reporting location if offense location was unknown) was entered without one of the 12 valid division assignments. Districts are not equal in geographic size, demographics, zoning/development, and other factors that influence the rate of crimes committed in an area. Therefore, the comparison of raw offense totals across districts is **not** advisable.



The data in the district breakdowns does not include a small number of offenses in which the offense location (or reporting location if offense location was unknown) was entered without one of the 12 valid division assignments. Districts are not equal in geographic size, demographics, zoning/development, and other factors that influence the rate of crimes committed in an area. Therefore, the comparison of raw offense totals across districts is **not** advisable.

**Arrests by Charlotte-Mecklenburg Police Department**  
**Year-To-Date: 2005-2006**  
**(Through September)**

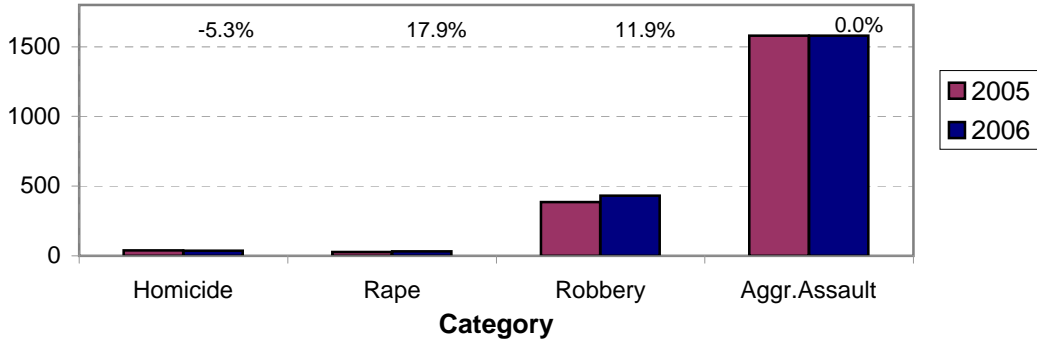
CATEGORY	ADULTS (AGE 18 & OLDER):			JUVENILES ( UNDER 18):			TOTAL ARRESTS:		
	2005 Y-T-D	2006 Y-T-D	% CHANGE	2005 Y-T-D	2006 Y-T-D	% CHANGE	2005 Y-T-D	2006 Y-T-D	% CHANGE
Murder/Non-Negligent Manslaughter	36	33	-8.3%	2	3	50.0%	38	36	-5.3%
Negligent & Vehicular Manslaughter	3	1	-66.7%	0	0	NA	3	1	-66.7%
Rape	27	27	0.0%	1	6	500.0%	28	33	17.9%
Robbery	304	305	0.3%	82	127	54.9%	386	432	11.9%
Aggravated Assault	1364	1367	0.2%	216	213	-1.4%	1580	1580	0.0%
Burglary	460	535	16.3%	181	178	-1.7%	641	713	11.2%
Larceny	1181	1063	-10.0%	403	406	0.7%	1584	1469	-7.3%
Vehicle Theft	69	65	-5.8%	82	66	-19.5%	151	131	-13.2%
Non-Aggravated Assault	1543	1511	-2.1%	584	507	-13.2%	2127	2018	-5.1%
Arson	9	10	11.1%	24	19	-20.8%	33	29	-12.1%
Forgery/Counterfeit	101	124	22.8%	2	0	-100.0%	103	124	20.4%
Fraud	443	430	-2.9%	4	5	25.0%	447	435	-2.7%
Embezzlement	62	69	11.3%	9	11	22.2%	71	80	12.7%
Stolen Property	375	416	10.9%	107	126	17.8%	482	542	12.4%
Vandalism	168	189	12.5%	177	180	1.7%	345	369	7.0%
Weapons	464	615	32.5%	50	67	34.0%	514	682	32.7%
Prostitution	215	163	-24.2%	2	3	50.0%	217	166	-23.5%
Sex Offenses	126	140	11.1%	21	14	-33.3%	147	154	4.8%
Drugs	2023	2311	14.2%	208	267	28.4%	2231	2578	15.6%
Gambling	3	3	0.0%	0	0	NA	3	3	0.0%
Offenses vs. Family	4	4	0.0%	0	0	NA	4	4	0.0%
DUI	1546	1493	-3.4%	8	15	87.5%	1554	1508	-3.0%
Liquor	166	177	6.6%	8	5	-37.5%	174	182	4.6%
Disorder Conduct	400	489	22.3%	234	219	-6.4%	634	708	11.7%
Other Non-Traffic	6035	6930	14.8%	596	809	35.7%	6631	7739	16.7%
<b>VIOLENT INDEX<sup>1</sup></b>	1731	1732	0.1%	301	349	15.9%	2032	2081	2.4%
<b>PROPERTY INDEX<sup>2</sup></b>	1719	1673	-2.7%	690	669	-3.0%	2409	2342	-2.8%
<b>INDEX SUBTOTAL</b>	3450	3405	-1.3%	991	1018	2.7%	4441	4423	-0.4%
<b>PART 2 SUBTOTAL<sup>3</sup></b>	13677	15065	10.1%	2010	2228	10.8%	15687	17293	10.2%
<b>TOTAL</b>	17127	18470	7.8%	3001	3246	8.2%	20128	21716	7.9%

<sup>1</sup>Violent Index includes murder and non-negligent manslaughter, rape, robbery, and aggravated assault.

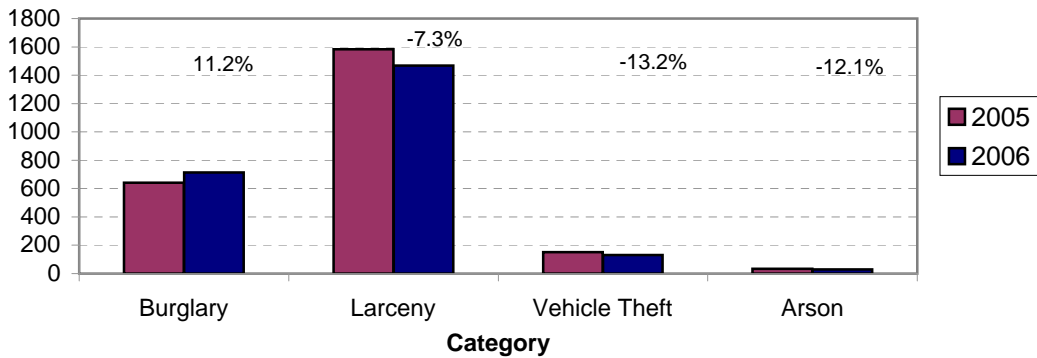
<sup>2</sup>Property Index includes burglary, larceny, vehicle theft, and arson.

<sup>3</sup>Part 2 crimes include crime categories not counted in the Index totals.

**Violent Index Arrests Year-to-Date  
Charlotte-Mecklenburg Police Department: 2005-2006  
(Through September)**

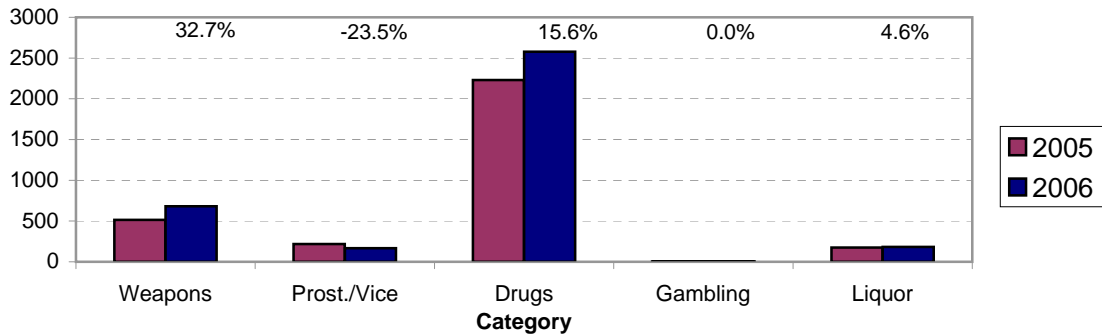


**Property Index Arrests Year-to-Date  
Charlotte-Mecklenburg Police Department: 2004-2005  
(Through September)**

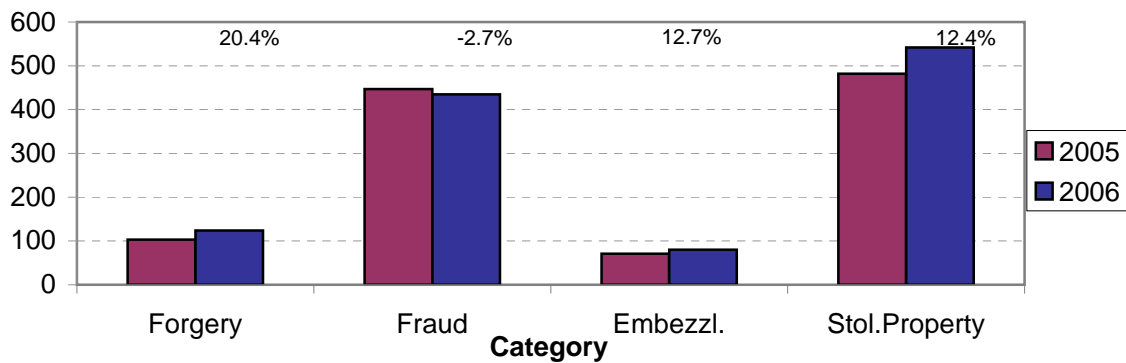




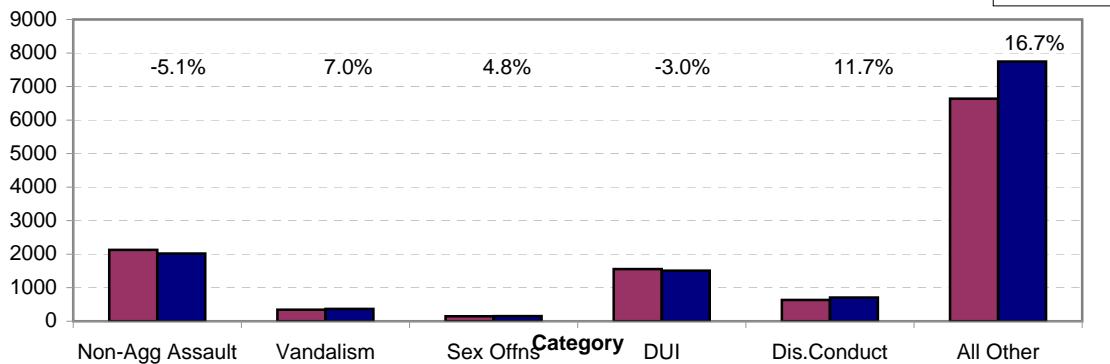
**Arrests for Vice/CCW/Drugs/Etc. Year-to-Date  
Charlotte-Mecklenburg Police Department: 2005- 2006  
(Through September)**



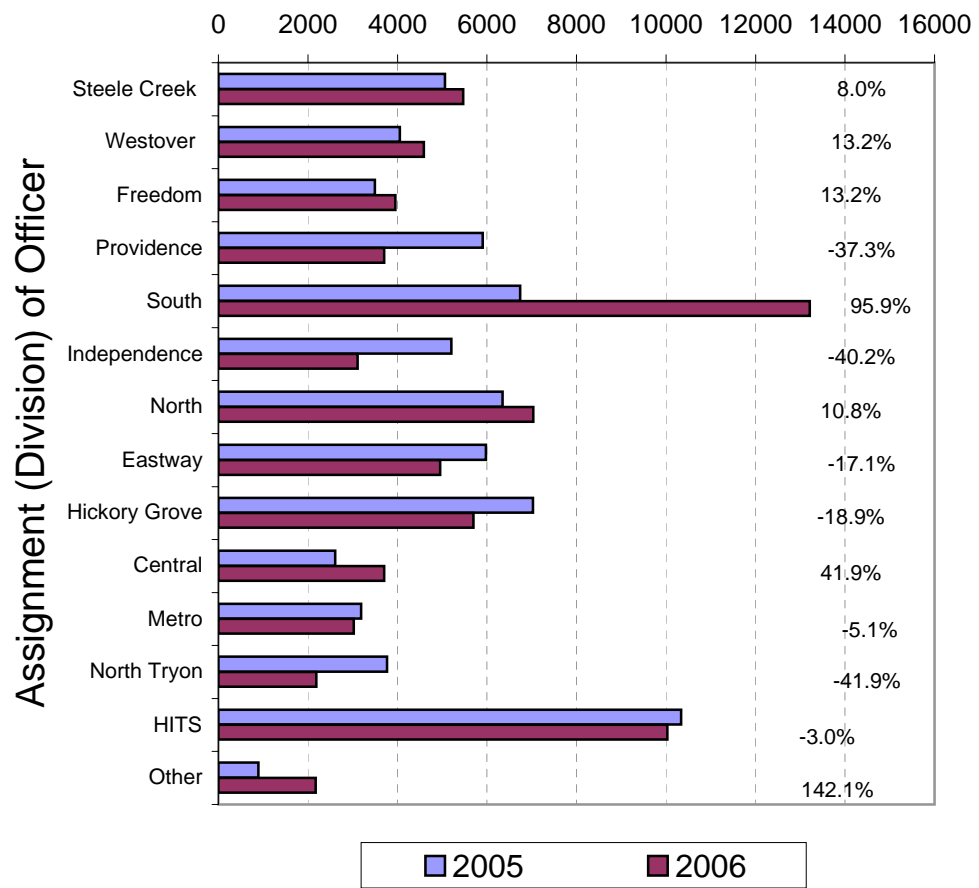
**Arrests for Property/White Collar Crime Year-to-Date  
Charlotte-Mecklenburg Police Department: 2005- 2006  
(Through September)**



**Arrests for Other Categories Year-to-Date  
Charlotte-Mecklenburg Police Department: 2005 - 2006  
(Through September)**



**Citations Issued Year-to-Date by CMPD Divisions  
2005 - 2006  
(Through September, 2006)**



**Citations Reported by the Charlotte Mecklenburg Police Year-to-Date  
(Through September, 2006)**

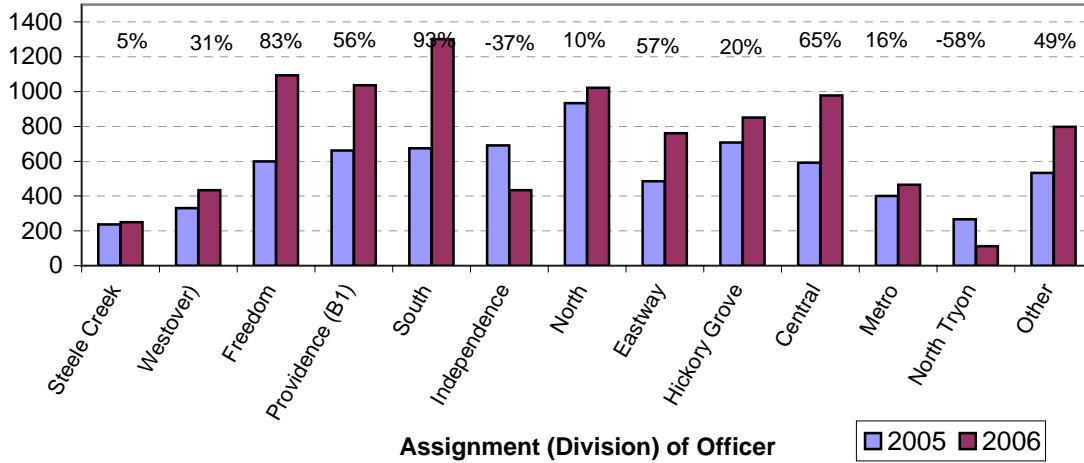
	2005	2006	% Change
Hazardous	28,850	30,788	6.7%
Non-Hazardous	28,674	29,051	1.3%
Other City/State Statute/Ordinance	13,087	12,999	-0.7%
<b>Total</b>	<b>70,611</b>	<b>72,838</b>	<b>3.2%</b>

**"Safe Speed" Program: 2005-2006  
(Through May 26, 2006)**

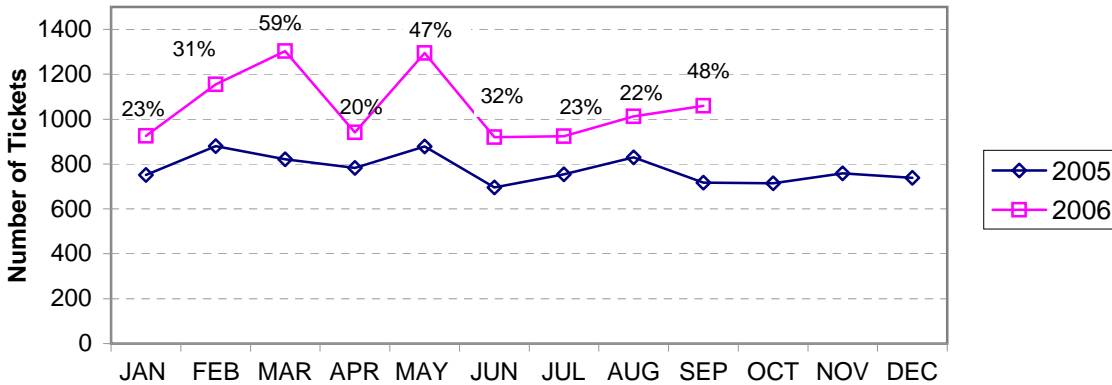
	2005	2006
Total Citations	28225	14637

(Citations issued through the "Safe Speed" program are **not** included in the summary charts/graphs; 2006 data only includes Jan- May 26.)

**Warning Ticket Violations Issued by Division  
Charlotte-Mecklenburg Police Department, 2005- 2006  
Through September, 2006**



**Total Warning Ticket Violations Issued by Month  
Charlotte-Mecklenburg Police Department: 2005 - 2006**



**Warning Tickets Issued Year-to-Date  
Charlotte-Mecklenburg Police Department  
Through September, 2006**

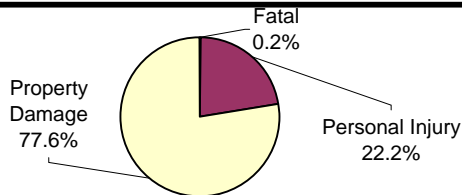
	2005	2006	% Change
Total Warning Tickets	7112	9535	34.1%

**Traffic Collision Reports  
Charlotte-Mecklenburg Police Department  
Year-to-Date: 2005-2006  
(Through September)**

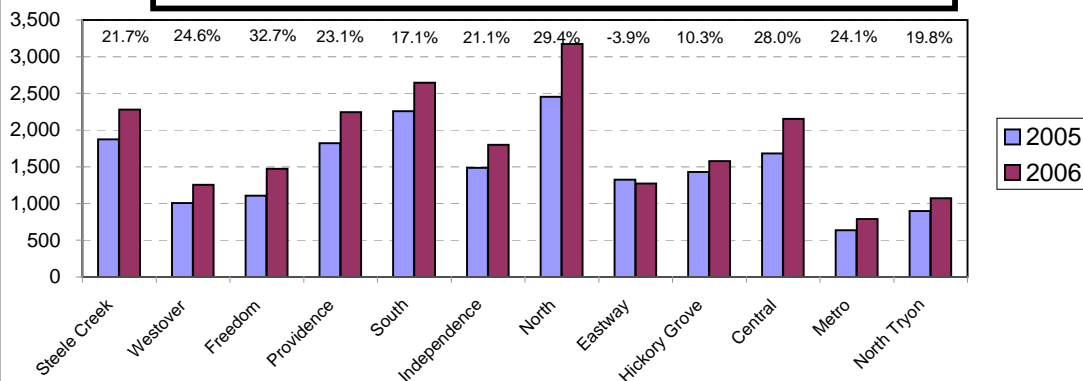
<u>Type</u>	<u>2005</u>	<u>2006</u>	<u>% Change</u>
Fatal Collisions	39	49	25.6%
Vehicle Occupants Killed	36	40	11.1%
Pedestrians Killed	4	11	175.0%
Personal Injury Collisions	4304	4854	12.8%
Property Damage Collisions	13707	16961	23.7%
Total Collisions	18050	21864	21.1%

\* The number of fatal collisions and the number of persons killed (fatalities) in those incidents is taken from the HITS file. Their records are updated for deaths that occur after the initial report is filed. Figures for 2005 may be adjusted after publication of 2005 Annual Report.

**Traffic Collisions Reported by Type  
Charlotte-Mecklenburg Police Department:  
2006 Year-to-Date  
(Through September)**



**Traffic Collisions Reported by Charlotte-Mecklenburg Police Dept.  
Year-to-Date By Location (Division) : 2005 -2006  
(Through September)**



**CITIZEN-INITIATED CALLS FOR SERVICE<sup>1</sup> BY TYPE  
CHARLOTTE-MECKLENBURG POLICE DEPARTMENT**

<u>Type of Call<sup>2</sup></u>	<u>2005 Year-to-Date Through September</u>	<u>2006 Year-to-Date Through September</u>	<u>Year-to-Date % Change</u>
ABC RELATED	1779	1712	-3.8%
ACCIDENT	26327	26663	1.3%
ALARM	25825	27246	5.5%
ANIMAL CONTROL <sup>3</sup>	185	230	24.3%
ASSAULT	3443	3619	5.1%
ASSAULT WITH DEADLY WEAPON	1326	1510	13.9%
ASSIST OTHER AGENCY	6141	6407	4.3%
BOMB THREAT	77	74	-3.9%
BREAK/ENTER	13775	15353	11.5%
CDCP CLINICIAN VISIT <sup>4</sup>	0	851	NA
COMMUNICATING THREATS	2597	2604	0.3%
COUNTY SECURITY <sup>3</sup>	8	5	-37.5%
CRIMINAL INTELLIGENCE	15	14	-6.7%
CRITICAL INCIDENT <sup>4</sup>	0	13	NA
DAMAGE TO PROPERTY	6010	6036	0.4%
DEATH	202	209	3.5%
DISTURBANCE	20278	21795	7.5%
DOMESTIC INCIDENT	27972	26902	-3.8%
DRUG RELATED	2993	3198	6.8%
EXTORTION/BLACKMAIL <sup>4</sup>	0	9	NA
FIGHT	2528	2553	1.0%
FIRE	4	6	50.0%
FIRE CASE	63	61	-3.2%
FRAUD/FORGERY	2414	2977	23.3%
GAMBLING	13	8	-38.5%
HARASSMENT	1481	1294	-12.6%
HIT AND RUN	5672	5836	2.9%
JUVENILE RELATED	1716	1660	-3.3%
KIDNAPPING	159	173	8.8%
LAKE ENFORCEMENT	60	26	-56.7%
LARCENY	22239	22473	1.1%
LOITERING	3713	4336	16.8%
MAJOR INCIDENT	21	4	-81.0%
MISSING PERSON	5202	5409	4.0%
NOISE COMPLAINT	11034	11804	7.0%
OFFENSE AGAINST FAMILY	5	25	400.0%
OFFICER CALLED IN	529	430	-18.7%
OVERDOSE	309	49	-84.1%
PORNOGRAPHY	5	12	140.0%
PROPERTY	4903	5602	14.3%
PROSTITUTION	1014	1032	1.8%
PUBLIC SERVICE	17004	13509	-20.6%
QUALITY OF LIFE	1241	957	-22.9%
ROBBERY	2739	2634	-3.8%
SEX CRIME	920	945	2.7%
SPECIAL SERVICE REQUEST	6	3	-50.0%
SUICIDE	868	987	13.7%
SUSPICIOUS PERSON	14776	15813	7.0%
TRAFFIC RELATED	8430	8753	3.8%
TRESPASS	3406	3247	-4.7%
VEHICLE RELATED	25819	27793	7.6%
VIOLENT CRIMES TASK FORCE	1	2	100.0%
WARRANT RELATED	2753	2513	-8.7%
WEAPON RELATED	5860	6860	17.1%
ZONE CHECK-ADVISED EVENT <sup>4</sup>	0	10	NA
911 HANG UP / CALLBACK	20044	12451	-37.9%
<b>TOTAL</b>	<b>305904</b>	<b>306697</b>	<b>0.3%</b>

<sup>1</sup>These totals exclude duplicate and cancelled calls for service; they include calls handled by the Crime Reporting Unit as well as by division field officers, detectives and related CMPD staff.

<sup>2</sup>The type of call is determined from the 911 call, unless updated by an officer assigned to respond.

<sup>3</sup>In this summary, calls to Animal Control, Mecklenburg County Security, or Davidson Police are not included unless they also involve the dispatching of C-MPD field officers or detectives.

<sup>4</sup>This call type was not in use during the previous year and/or all of the current year.

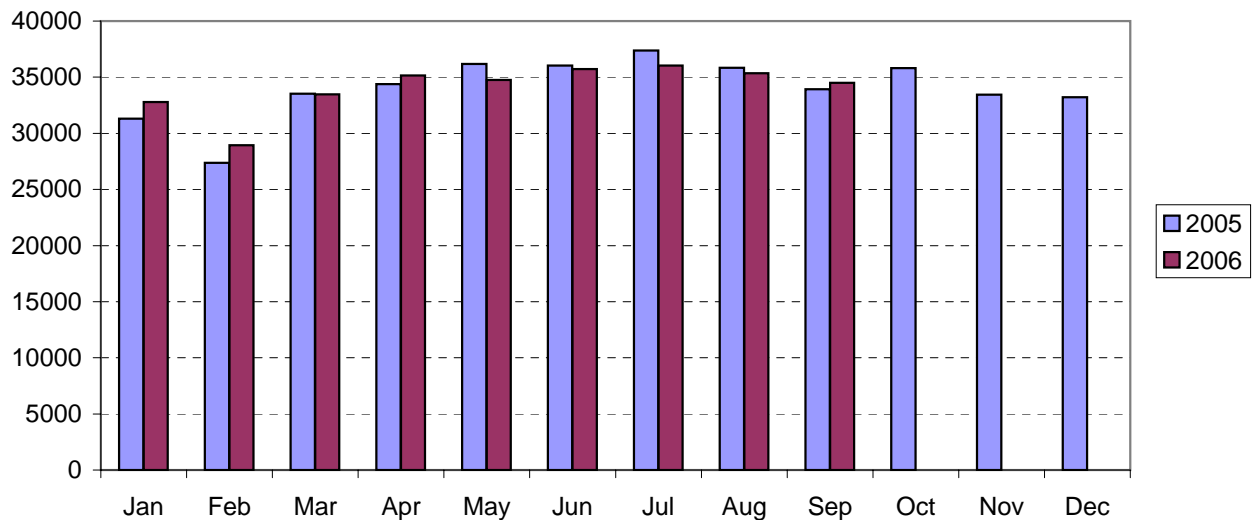
**CITIZEN-INITIATED CALLS FOR SERVICE BY ORIGINATING CMPD DIVISION<sup>1,2</sup>**  
 (Based on District of Call Origination, Not on Assigned District of Responding Units)

<u>District</u>	<u>2005 Year-to-Date Through September</u>	<u>2006 Year-to-Date Through September</u>	<u>Year-to-Date % Change</u>
Central-01 (D1)	19615	19410	-1.0%
Metro-02 (D2)	16996	17520	3.1%
Eastway-06 (C2)	22920	21464	-6.4%
North Tryon-07 (D3)	18583	18881	1.6%
North-11 (C1)	37257	40796	9.5%
Hickory Grove-12 (C3)	28254	28844	2.1%
Providence-16 (B1)	21125	20928	-0.9%
Independence-17 (B3)	26681	26849	0.6%
Steele Creek-21 (A1)	26582	27051	1.8%
South-22 (B2)	27818	27339	-1.7%
Westover-26 (A2)	20939	22178	5.9%
Freedom-27 (A3)	30018	32102	6.9%

<sup>1</sup>These totals exclude duplicate and cancelled calls for service; they include calls handled by the Crime Reporting Unit as well as by division field officers, detectives and other CMPD staff.

<sup>2</sup>Calls where the location could not be assigned to one of the divisions are not included in this chart.

**Citizen-Initiated Calls for Service<sup>1</sup> by Month**  
**Charlotte-Mecklenburg Police Department: 2005-2006**



<sup>1</sup>These totals exclude duplicate and cancelled calls for service; they include calls handled by the Crime Reporting Unit as well as by division field officers, detectives and other CMPD staff.

## Uniform Crime Reporting Procedures

The Charlotte-Mecklenburg Police Department reports offense and arrest statistics in accordance with standard Uniform Crime Reporting (UCR) guidelines. UCR policy states that any adjustments to previous months can be made on the current month's report:

...In tabulating crime counts, an agency may find that offense totals for past months require adjustments due to developments in the investigation or other handling of the matter. It may be necessary to adjust totals reported to UCR for the past month or prior months. Needed adjustments can be made on the current month's report and do not affect the reliability of the figures in that such adjustments tend to equalize each other from month to month over a period of time.

- *Uniform Crime Reporting Handbook*, FBI, 1984, p. 42-43

We are required to report crime monthly to the UCR program, and we do therefore make an effort to process monthly changes in a timely manner. However, occasionally due to the review and processing required for reclassifying, unbounding or clearing cases, the current month's totals may reflect the processing of a backlog of these changes from previous months.

Users of the data are cautioned that conclusions about substantial changes in crime trends or in clearance rates based on only a single month's data or trend may reflect some of these adjustments. For this reason, in addition to the monthly and year-to-date trends on Page 1, the monthly report routinely includes a comparison for the previous 12 months (p. 4), as well as graphs that provide seasonal/monthly comparisons over a five-year period (p. 5-8).

### UCR Definitions and Terms:

**Index Crime:** the eight offenses that the national UCR program tracks on a yearly basis to gauge trends in the extent of crime, despite differences among state and local criminal statutes. These offenses were selected on the basis of several factors: seriousness, frequency of occurrence, pervasiveness in all geographic areas, and/or likelihood of being reported to law enforcement.

**Violent Index:** includes the offenses of murder/non-negligent manslaughter, rape, robbery, and aggravated assault

**Property Index:** includes the offenses of burglary, larceny, vehicle theft and arson

**Murder/non-negligent manslaughter:** the willful killing of one human being by another

**Justifiable Homicide:** limited by UCR to either a killing by a law enforcement officer in the line of duty or a killing by a citizen of a felon during the commission of a felony. If a homicide is determined to be "justifiable" by this definition, it is subtracted from the murder/non-negligent manslaughter category after investigation.

**Rape:** the carnal knowledge of a female forcibly and against her will [Note: This offense does not include other sex offenses or statutory (non-forcible) rape.]

**Robbery:** the taking or attempt to take anything of value from the care, custody, or control of a person or persons by force, threat of force or violence, or by putting the victim in fear.

**Aggravated assault:** an unlawful attack by one person on another for the purpose of inflicting severe or aggravated bodily injury; includes 1) all assaults in which a weapon of any type is used or is threatened to be used and/or 2) all assaults where serious injury occurs.

**Burglary:** the unlawful entry or attempted entry of a structure to commit a felony or a theft

**Larceny-Theft:** the unlawful taking (or attempt), carrying, leading, or riding away of property from the possession or constructive possession of another [Note: Larceny/theft of a motor vehicle is classed separately.]

Vehicle Theft: the theft or attempted theft of a motor vehicle (a self-propelled vehicle that runs on land and not on rails, excluding farm and construction equipment)

Arson: the willful or malicious burning or attempt to burn, with or without intent to defraud, a structure, motor vehicle, personal property of another, etc.

Hierarchy rule: For cases involving multiple-offenses, the incident is classified and counted based on the highest offense on a hierarchy of crimes established by UCR. For example, for an incident involving a rape and a burglary, the incident would be counted in the rape category because rape is higher than burglary on the hierarchy.

Clearance: A case is considered cleared when either at least one arrest is made for the offense or when an offender's identity is established by investigation but the offender will not be arrested for reasons outside law enforcement control (offender dies, victim refuses to prosecute, district attorney declines prosecution, extradition is refused, etc.).

Unfounding: A case is "unfounded" and subtracted from the crime counts when investigation establishes that the incident did not actually occur or that the actions within the incident are not criminal based on current law.

For additional information, please consult the *UCR Handbook* on the FBI website at <http://www.fbi.gov/ucr/ucr.htm>.

This report was compiled by the Research, Planning, and Analysis Division.

We make an effort to present the most accurate information available at the time this report is published. Please notify the Research, Planning, and Analysis office if you have any questions about the data in this report or about an error that was missed in proofing the report.