



**CHARLOTTE-MECKLENBURG POLICE DEPARTMENT
MONTHLY SUMMARY REPORT
JANUARY, 2007**

**Darrel Stephens
Chief of Police**

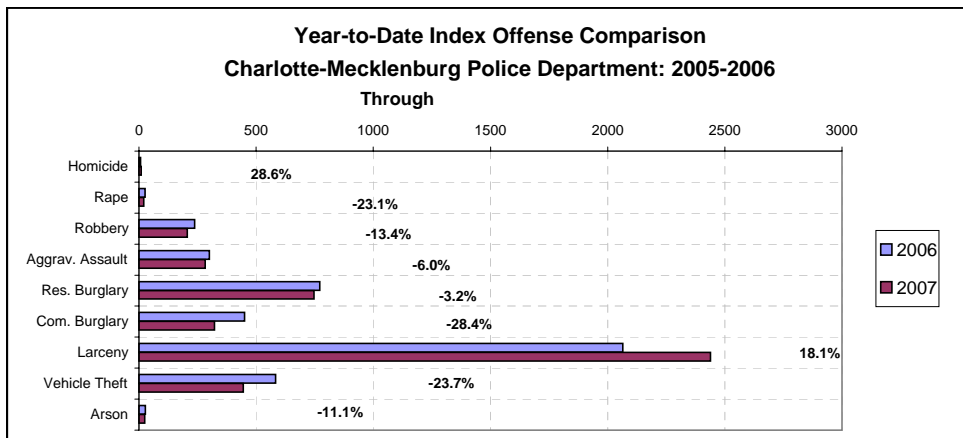
INDEX OFFENSES REPORTED TO CHARLOTTE-MECKLENBURG POLICE DEPARTMENT

January, 2007 INDEX OFFENSES	# THIS MONTH	% OF ALL INDEX	# LAST MONTH	MONTHLY % CHANGE	SAME MONTH LAST YEAR	MONTHLY % CHANGE	THIS YEAR TO DATE	LAST YEAR TO DATE	ANNUAL % CHANGE
HOMICIDE (MURDER & NON- NEGLIGENT MANSLAUGHTER)*	9	0.2%	7	28.6%	7	28.6%	9	7	28.6%
RAPE TOTAL	20	0.4%	17	17.6%	26	-23.1%	20	26	-23.1%
ACTUAL	19	0.4%	16	18.8%	25	-24.0%	19	25	-24.0%
ATTEMPT	1	0.0%	1	0.0%	1	0.0%	1	1	0.0%
ROBBERY TOTAL	206	4.6%	297	-30.6%	238	-13.4%	206	238	-13.4%
ARMED	160	3.6%	248	-35.5%	200	-20.0%	160	200	-20.0%
STRONG-ARM	46	1.0%	49	-6.1%	38	21.1%	46	38	21.1%
AGGRAVATED ASSAULT TOTAL	283	6.3%	280	1.1%	301	-6.0%	283	301	-6.0%
BURGLARY TOTAL	1069	23.8%	1224	-12.7%	1222	-12.5%	1069	1222	-12.5%
RESIDENTIAL	747	16.6%	868	-13.9%	772	-3.2%	747	772	-3.2%
COMMERCIAL	322	7.2%	356	-9.6%	450	-28.4%	322	450	-28.4%

FORCE	886	19.7%	1002	-11.6%	1012	-12.5%	886	1012	-12.5%
NO FORCE	121	2.7%	114	6.1%	114	6.1%	121	114	6.1%
ATTEMPT	62	1.4%	108	-42.6%	96	-35.4%	62	96	-35.4%
LARCENY TOTAL	2439	54.3%	2451	-0.5%	2065	18.1%	2439	2065	18.1%
\$200 AND OVER	1253	27.9%	1199	4.5%	1041	20.4%	1253	1041	20.4%
\$50 TO \$200	412	9.2%	448	-8.0%	404	2.0%	412	404	2.0%
UNDER \$50	774	17.2%	804	-3.7%	620	24.8%	774	620	24.8%

FROM AUTO	1304	29.0%	1341	-2.8%	1092	19.4%	1304	1092	19.4%
BICYCLE	9	0.2%	12	-25.0%	9	0.0%	9	9	0.0%
SHOPLIFTING	227	5.1%	239	-5.0%	223	1.8%	227	223	1.8%
OTHERS	899	20.0%	859	4.7%	741	21.3%	899	741	21.3%
VEHICLE THEFT TOTAL	445	9.9%	523	-14.9%	583	-23.7%	445	583	-23.7%
ARSON TOTAL	24	0.5%	40	-40.0%	27	-11.1%	24	27	-11.1%
TOTALS	4495	100.0%	4839	-7.1%	4469	0.6%	4495	4469	0.6%
VIOLENT	518	11.5%	601	-13.8%	572	-9.4%	518	572	-9.4%
PROPERTY	3977	88.5%	4238	-6.2%	3897	2.1%	3977	3897	2.1%

*NOTE: These totals include offenses reported to the Charlotte-Mecklenburg Police Department in accordance with the Uniform Crime Reporting (UCR) Program. Because the data in this report is primarily based on the automated Records Management System, cases counted this month may include offenses from previous months/years that were reclassified after investigation. Homicide totals do not include cases classed as justifiable homicides by UCR rules (See the glossary at the end of this report for the UCR definition of justifiable homicide).

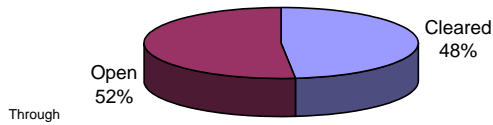


INDEX CLEARANCES REPORTED BY THE CHARLOTTE-MECKLENBURG POLICE DEPARTMENT

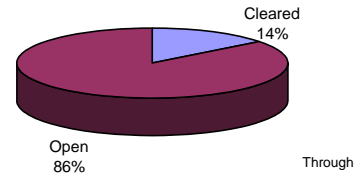
January, 2007 INDEX CLEARANCES	THIS MONTH:		LAST MONTH:		SAME MO. LAST YR:		THIS YEAR TO DATE:		LAST YEAR TO DATE:	
	NO.	%	NO.	%	NO.	%	NO.	%	NO.	%
MURDER & NON-NEGLIGENT MANSLAUGHTER ¹	7	77.8%	12	171.4%	5	71.4%	7	77.8%	5	71.4%
RAPE TOTAL	15	75.0%	21	123.5%	17	65.4%	15	75.0%	17	65.4%
ACTUAL	15	78.9%	19	118.8%	17	68.0%	15	78.9%	17	68.0%
ATTEMPT	0	0.0%	2	200.0%	0	0.0%	0	0.0%	0	0.0%
ROBBERY TOTAL	66	32.0%	74	24.9%	106	44.5%	66	32.0%	106	44.5%
ARMED	55	34.4%	54	21.8%	79	39.5%	55	34.4%	79	39.5%
STRONG-ARM	11	23.9%	20	40.8%	27	71.1%	11	23.9%	27	71.1%
AGGRAVATED ASSAULT TOTAL	163	57.6%	254	90.7%	174	57.8%	163	57.6%	174	57.8%
BURGLARY TOTAL	116	10.9%	146	11.9%	98	8.0%	116	10.9%	98	8.0%
RESIDENTIAL	72	9.6%	111	12.8%	75	9.7%	72	9.6%	75	9.7%
COMMERCIAL	44	13.7%	35	9.8%	23	5.1%	44	13.7%	23	5.1%
LARCENY TOTAL	367	15.0%	541	22.1%	329	15.9%	367	15.0%	329	15.9%
FROM AUTO	53	4.1%	99	7.4%	46	4.2%	53	4.1%	46	4.2%
BICYCLE	0	0.0%	6	50.0%	2	22.2%	0	0.0%	2	22.2%
SHOPLIFTING	149	65.6%	168	70.3%	144	64.6%	149	65.6%	144	64.6%
OTHERS	165	18.4%	258	30.0%	137	18.5%	165	18.4%	137	18.5%
VEHICLE THEFT TOTAL	83	18.7%	80	15.3%	88	15.1%	83	18.7%	88	15.1%
ARSON TOTAL	3	12.5%	10	25.0%	13	48.1%	3	12.5%	13	48.1%
TOTALS	820	18.2%	1138	23.5%	830	18.6%	820	18.2%	830	18.6%
VIOLENT PROPERTY	251 569	48.5% 14.3%	361 777	60.1% 18.3%	302 528	52.8% 13.5%	251 569	48.5% 14.3%	302 528	52.8% 13.5%

¹NOTE : Clearances are reported in accordance with Uniform Crime Report guidelines. Since clearances are not counted for UCR until they are entered in the Records Management system, any delays in entry of the documentation may result in some clearances being reported later in succeeding months. December, 2006 clearances may reflect efforts by some divisions to complete late data entry before the redistricting in January 2007. Clearances for Homicide in December include the manual addition of 3 clearances in 2006 for cases that occurred prior to 2001.

**Year-to-Date Violent Index Clearance Rate
Charlotte-Mecklenburg Police Department: 2006**

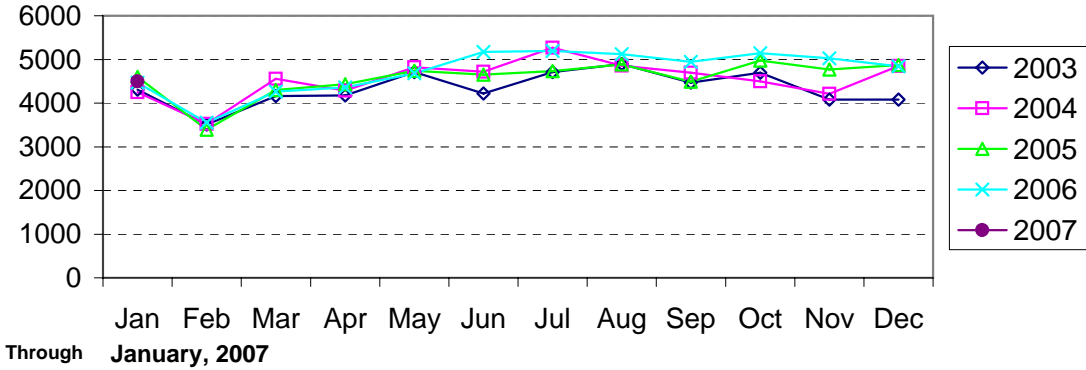


**Year-to-Date Property Index Clearance Rate
Charlotte-Mecklenburg Police Department: 2006**

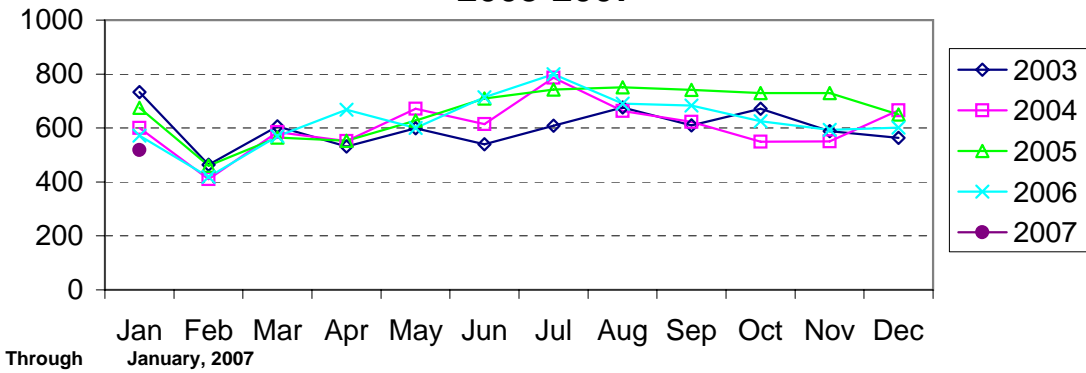


Clearance rates for crime reporting are calculated by dividing the number of crimes cleared during a designated time span by the number of crimes reported in the same period and converting the result to a percentage (multiplying by 100). Since cases from previous reporting periods can be cleared during the designated time span, the rate may be higher than 100%.

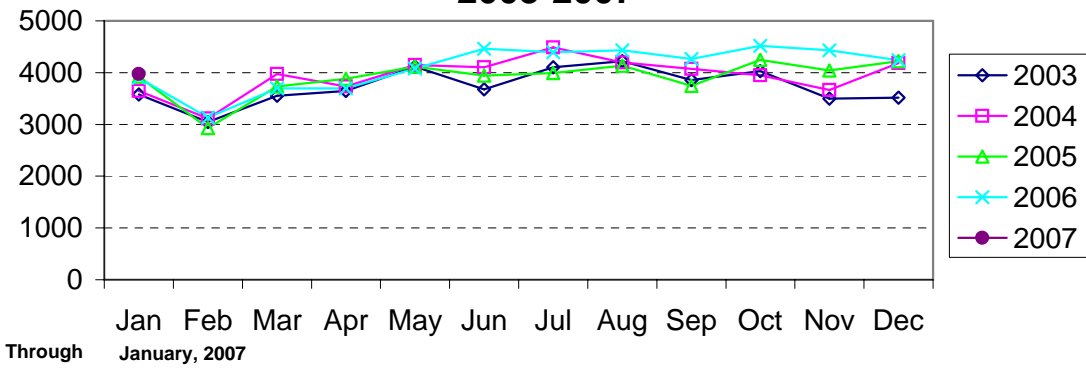
Index Offenses Reported by Month Charlotte-Mecklenburg Police Department: 2003-2007



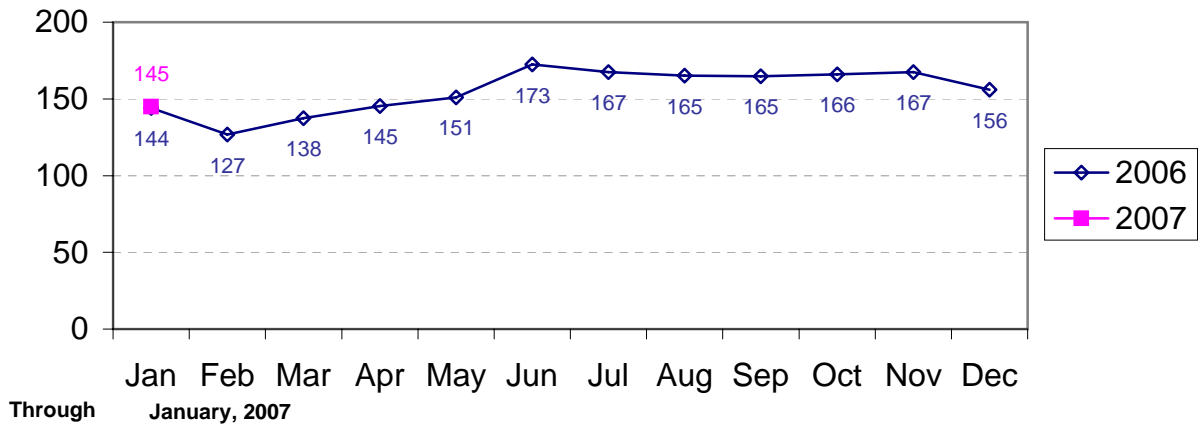
Violent Index Offenses Reported by Month Charlotte-Mecklenburg Police Department: 2003-2007



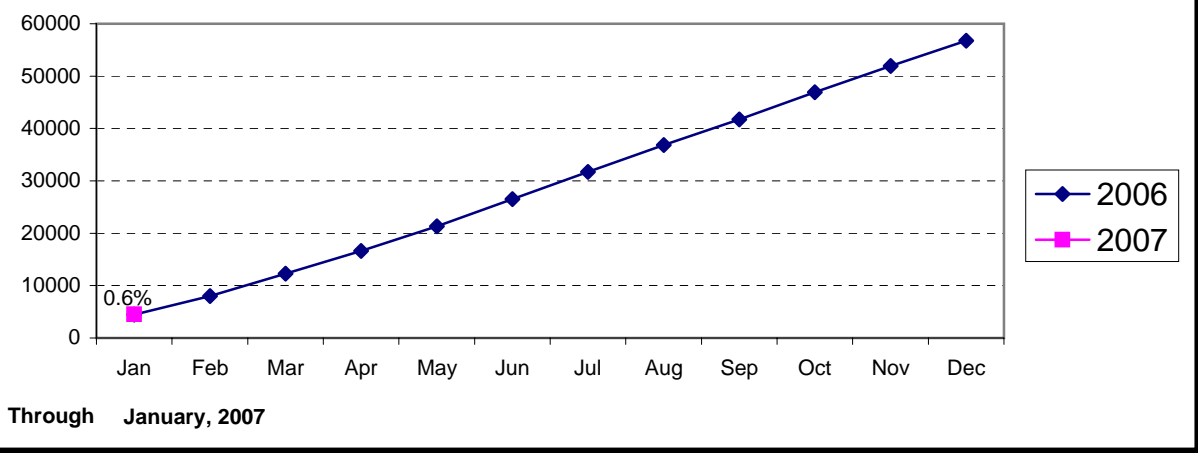
Property Index Offenses Reported by Month Charlotte-Mecklenburg Police Department: 2003-2007



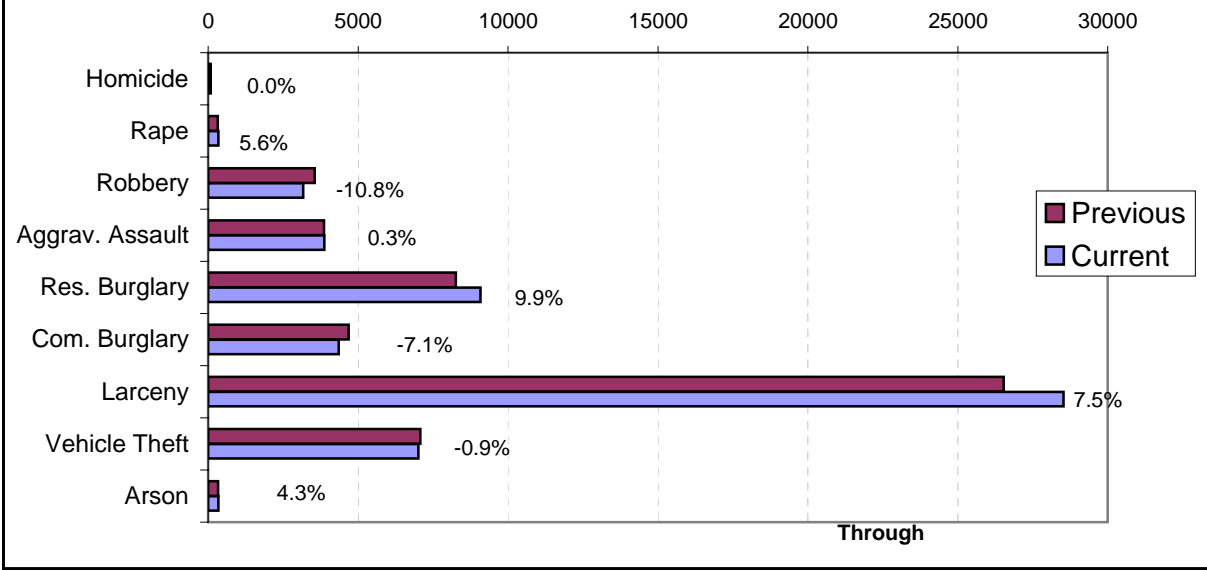
Index Offense Per Day Average by Month Charlotte-Mecklenburg Police Department: 2006-2007



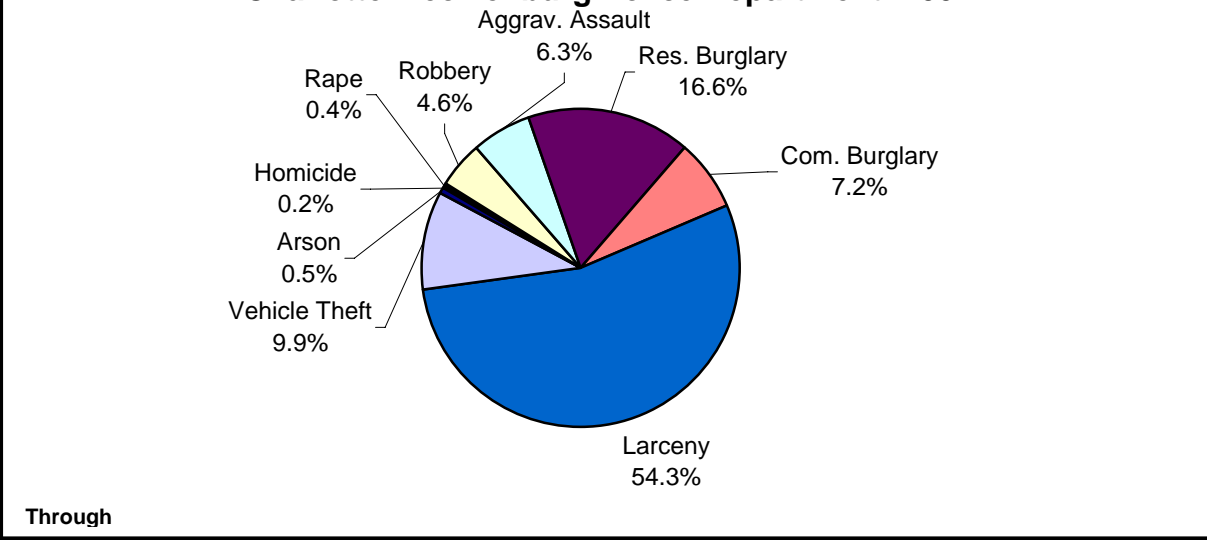
Index Offenses Year-to-Date Cumulative Totals Charlotte-Mecklenburg Police Department: 2005-2006



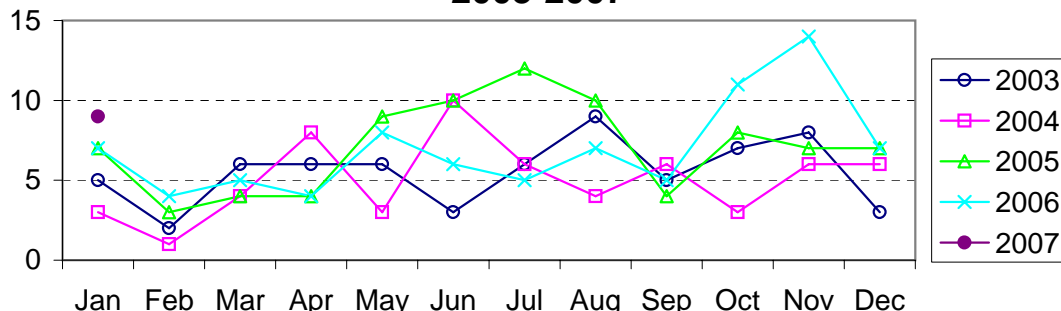
Index Offenses in Current & Previous 12 Month Periods Charlotte-Mecklenburg Police Department



Year-to-Date Index Offenses by Type Charlotte-Mecklenburg Police Department: 2007



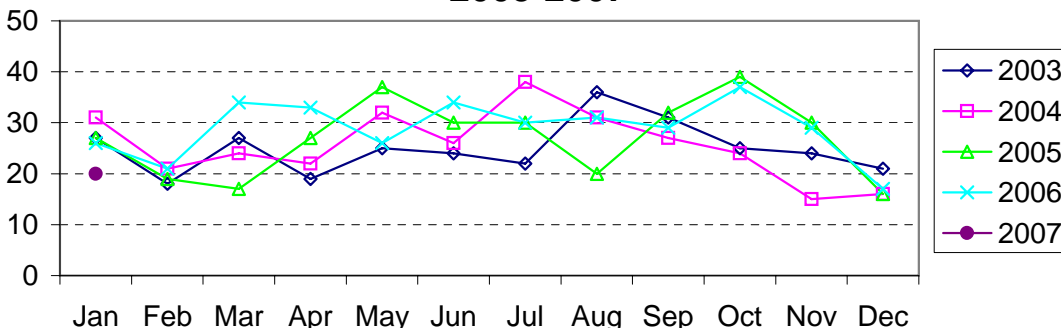
Homicide Reported by Month Charlotte-Mecklenburg Police Department: 2003-2007



Note: These totals reflect the month that the cases were classed as homicide and reported to The UCR program, not the month of occurrence.

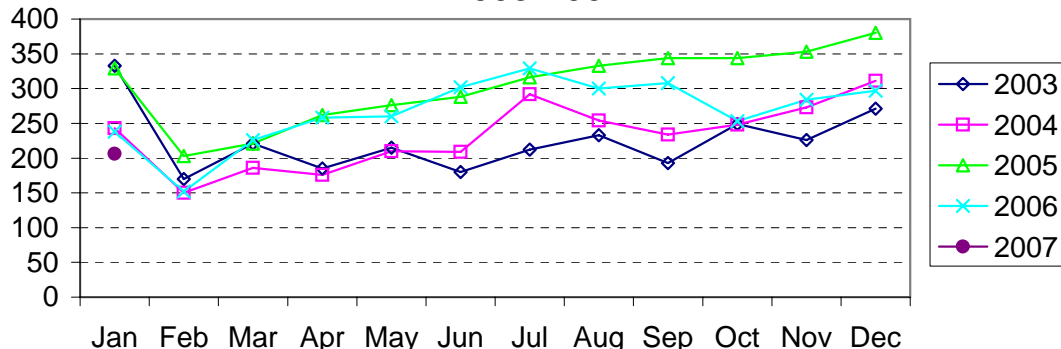
Through January, 2007

Rape Reported by Month Charlotte-Mecklenburg Police Department: 2003-2007



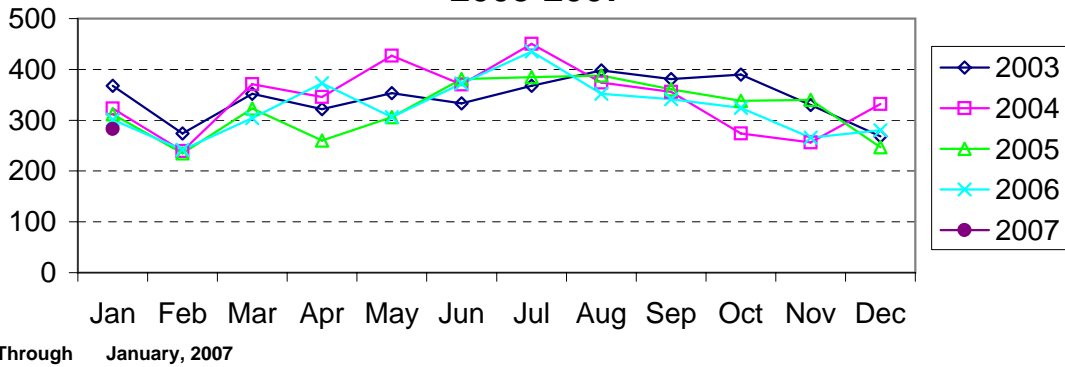
Through January, 2007

Robbery Reported by Month Charlotte-Mecklenburg Police Department: 2003-2007

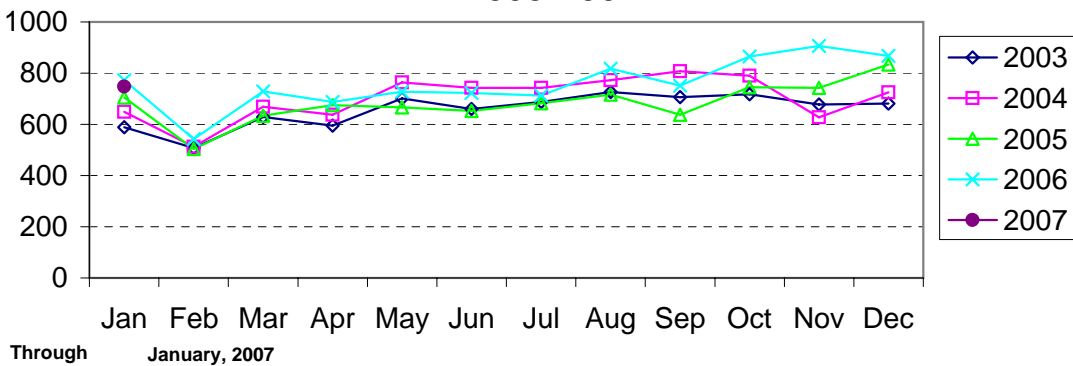


Through January, 2007

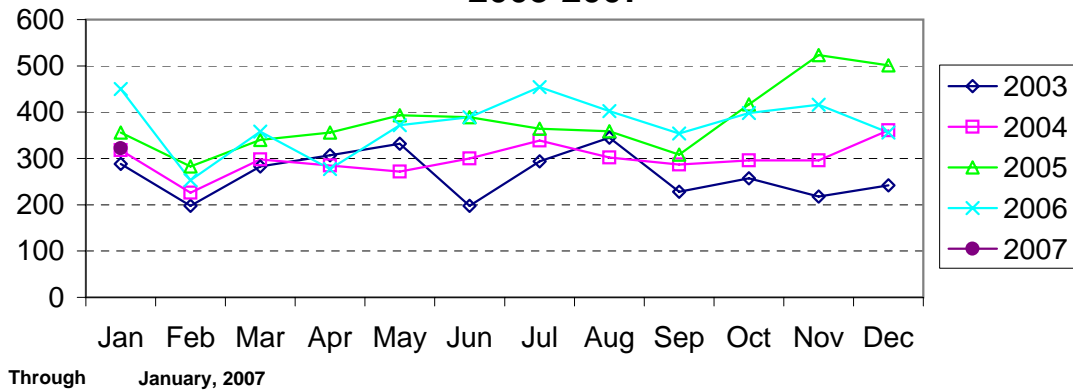
**Aggravated Assault Reported by Month
Charlotte-Mecklenburg Police Department:
2003-2007**



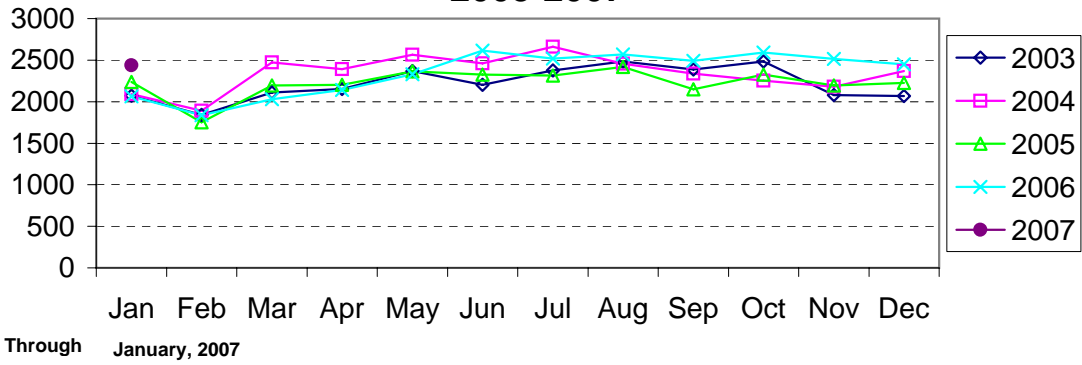
**Residential Burglary Reported by Month
Charlotte-Mecklenburg Police Department:
2003-2007**



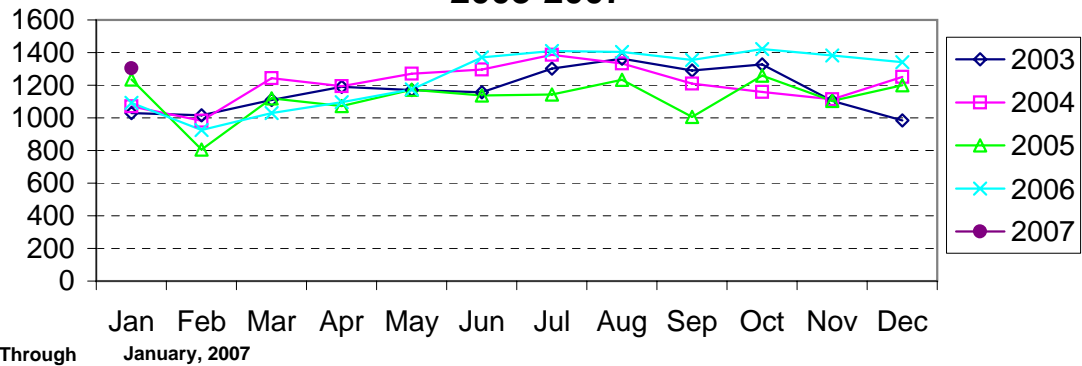
**Commercial Burglary Reported by Month
Charlotte-Mecklenburg Police Department:
2003-2007**



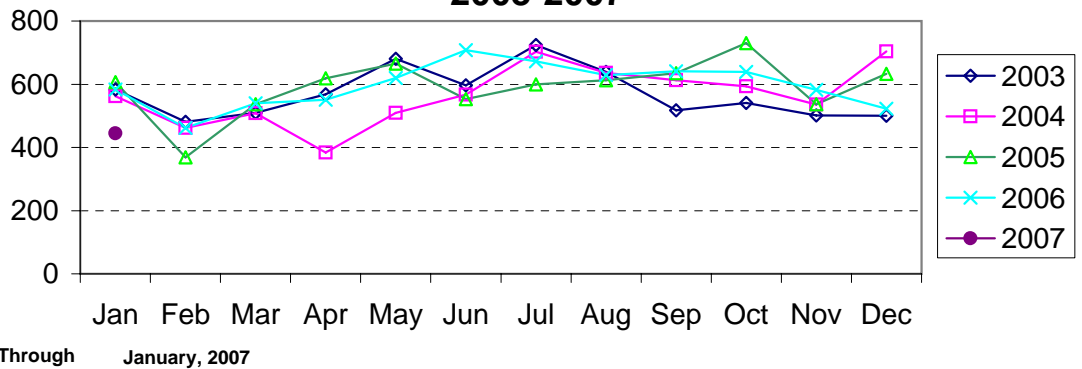
Larceny Reported by Month Charlotte-Mecklenburg Police Department: 2003-2007



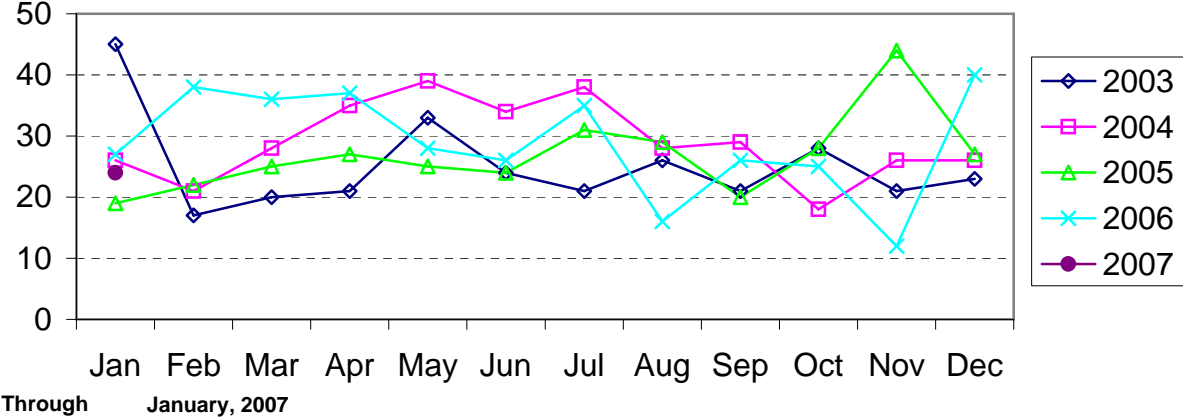
Larceny from Vehicle Reported by Month Charlotte-Mecklenburg Police Department: 2003-2007



Vehicle Theft Reported by Month Charlotte-Mecklenburg Police Department: 2003-2007



Arson Reported by Month Charlotte-Mecklenburg Police Department: 2003-2007



East Service Area: Index Offenses Reported By Division, January, 2007

Eastway Division (06)								
	<u>Current month</u>	<u>Previous Month</u>	<u>Percent Change</u>	<u>Same Month Last Year</u>	<u>Percent Change</u>	<u>Current Year-to-Date</u>	<u>Past Year-to-Date</u>	<u>Percent Change</u>
MURDER & NON-NEGLIGENT MANSLAUGHTER	1	0	NA	1	0.0%	1	1	0.0%
RAPE	2	0	NA	2	0.0%	2	2	0.0%
ROBBERY	15	28	-46.4%	42	-64.3%	15	42	-64.3%
ARMED	14	24	-41.7%	35	-60.0%	14	35	-60.0%
STRONG-ARM	1	4	-75.0%	7	-85.7%	1	7	-85.7%
AGGRAVATED ASSAULT	22	38	-42.1%	36	-38.9%	22	36	-38.9%
BURGLARY	81	104	-22.1%	79	2.5%	81	79	2.5%
RESIDENTIAL	68	67	1.5%	58	17.2%	68	58	17.2%
COMMERCIAL	13	37	-64.9%	21	-38.1%	13	21	-38.1%
LARCENY	132	153	-13.7%	160	-17.5%	132	160	-17.5%
FROM AUTO	59	73	-19.2%	72	-18.1%	59	72	-18.1%
BICYCLE	0	0	NA	0	NA	0	0	NA
SHOPLIFTING	26	34	-23.5%	28	-7.1%	26	28	-7.1%
OTHERS	47	46	2.2%	60	-21.7%	47	60	-21.7%
VEHICLE THEFT	48	54	-11.1%	64	-25.0%	48	64	-25.0%
ARSON	2	1	100.0%	2	0.0%	2	2	0.0%
TOTALS	303	378	-19.8%	386	-21.5%	303	386	-21.5%
VIOLENT	40	66	-39.4%	81	-50.6%	40	81	-50.6%
PROPERTY	263	312	-15.7%	305	-13.8%	263	305	-13.8%

North Tryon Division (07)								
	<u>Current month</u>	<u>Previous Month</u>	<u>Percent Change</u>	<u>Same Month Last Year</u>	<u>Percent Change</u>	<u>Current Year-to-Date</u>	<u>Past Year-to-Date</u>	<u>Percent Change</u>
MURDER & NON-NEGLIGENT MANSLAUGHTER	2	1	100.0%	1	100.0%	1	1	0.0%
RAPE	1	1	0.0%	3	-66.7%	1	3	-66.7%
ROBBERY	23	27	-14.8%	19	21.1%	23	19	21.1%
ARMED	16	18	-11.1%	17	-5.9%	16	17	-5.9%
STRONG-ARM	7	9	-22.2%	2	250.0%	7	2	250.0%
AGGRAVATED ASSAULT	24	18	33.3%	24	0.0%	24	24	0.0%
BURGLARY	82	74	10.8%	117	-29.9%	82	117	-29.9%
RESIDENTIAL	54	53	1.9%	65	-16.9%	54	65	-16.9%
COMMERCIAL	28	21	33.3%	52	-46.2%	28	52	-46.2%
LARCENY	143	111	28.8%	123	16.3%	143	123	16.3%
FROM AUTO	73	60	21.7%	84	-13.1%	73	84	-13.1%
BICYCLE	0	1	-100.0%	2	0	0	2	-100.0%
SHOPLIFTING	5	8	-37.5%	2	150.0%	5	2	150.0%
OTHERS	65	42	54.8%	35	85.7%	65	35	85.7%
VEHICLE THEFT	50	59	-15.3%	54	-7.4%	50	54	-7.4%
ARSON	2	9	-77.8%	1	100.0%	2	1	100.0%
TOTALS	327	300	9.0%	342	-4.4%	326	342	-4.7%
VIOLENT	50	47	6.4%	47	6.4%	49	47	4.3%
PROPERTY	277	253	9.5%	295	-6.1%	277	295	-6.1%

North Service Area: Index Offenses Reported By Division, January, 2007

North Division (11)								
	<u>Current month</u>	<u>Previous Month</u>	<u>Percent Change</u>	<u>Same Month Last Year</u>	<u>Percent Change</u>	<u>Current Year-to-Date</u>	<u>Past Year-to-Date</u>	<u>Percent Change</u>
MURDER & NON-NEGLIGENT MANSLAUGHTER	0	0	NA	0	NA	0	0	NA
RAPE	3	1	200.0%	3	0.0%	3	3	0.0%
ROBBERY	9	18	-50.0%	8	12.5%	9	8	12.5%
ARMED	9	16	-43.8%	8	12.5%	9	8	12.5%
STRONG-ARM	0	2	-100.0%	0	NA	0	0	NA
AGGRAVATED ASSAULT	21	24	-12.5%	15	40.0%	21	15	40.0%
BURGLARY	147	150	-2.0%	131	12.2%	147	131	12.2%
RESIDENTIAL	124	128	-3.1%	77	61.0%	124	77	61.0%
COMMERCIAL	23	22	4.5%	54	-57.4%	23	54	-57.4%
LARCENY	218	202	7.9%	151	44.4%	218	151	44.4%
FROM AUTO	109	110	-0.9%	78	39.7%	109	78	39.7%
BICYCLE	1	0	NA	1		1	1	0.0%
SHOPLIFTING	18	22	-18.2%	12	50.0%	18	12	50.0%
OTHERS	90	70	28.6%	60	50.0%	90	60	50.0%
VEHICLE THEFT	18	34	-47.1%	34	-47.1%	18	34	-47.1%
ARSON	5	7	-28.6%	3	66.7%	5	3	66.7%
TOTALS	421	436	-3.4%	345	22.0%	421	345	22.0%
VIOLENT PROPERTY	33	43	-23.3%	26	26.9%	33	26	26.9%
	388	393	-1.3%	319	21.6%	388	319	21.6%

University Division (14)								
	<u>Current month</u>	<u>Previous Month</u>	<u>Percent Change</u>	<u>Same Month Last Year</u>	<u>Percent Change</u>	<u>Current Year-to-Date</u>	<u>Past Year-to-Date</u>	<u>Percent Change</u>
MURDER & NON-NEGLIGENT MANSLAUGHTER	0	0	NA	0	NA	0	0	NA
RAPE	1	0	NA	1	0.0%	1	1	0.0%
ROBBERY	11	21	-47.6%	17	-35.3%	11	17	-35.3%
ARMED	10	17	-41.2%	14	-28.6%	10	14	-28.6%
STRONG-ARM	1	4	-75.0%	3	-66.7%	1	3	-66.7%
AGGRAVATED ASSAULT	4	16	-75.0%	8	-50.0%	4	8	-50.0%
BURGLARY	65	138	-52.9%	89	-27.0%	65	89	-27.0%
RESIDENTIAL	49	112	-56.3%	60	-18.3%	49	60	-18.3%
COMMERCIAL	16	26	-38.5%	29	-44.8%	16	29	-44.8%
LARCENY	227	249	-8.8%	215	5.6%	227	215	5.6%
FROM AUTO	127	158	-19.6%	131	-3.1%	127	131	-3.1%
BICYCLE	0	0	NA	1		0	1	-100.0%
SHOPLIFTING	35	28	25.0%	24	45.8%	35	24	45.8%
OTHERS	65	63	3.2%	59	10.2%	65	59	10.2%
VEHICLE THEFT	28	44	-36.4%	42	-33.3%	28	42	-33.3%
ARSON	2	0	NA	0	NA	2	0	NA
TOTALS	338	468	-27.8%	372	-9.1%	338	372	-9.1%
VIOLENT PROPERTY	16	37	-56.8%	26	-38.5%	16	26	-38.5%
	322	431	-25.3%	346	-6.9%	322	346	-6.9%

Southeast Service Area

Index Offenses Reported By Division, January, 2007

Hickory Grove Division (12)								
	<u>Current</u> <u>month</u>	<u>Previous</u> <u>Month</u>	<u>Percent</u> <u>Change</u>	<u>Same Month</u> <u>Last Year</u>	<u>Percent</u> <u>Change</u>	<u>Current Year-</u> <u>to-Date</u>	<u>Past Year-</u> <u>to-Date</u>	<u>Percent</u> <u>Change</u>
MURDER & NON-NEGLIGENT MANSLAUGHTER	0	0	NA	0	NA	0	0	NA
RAPE	1	2	-50.0%	1	0.0%	1	1	0.0%
ROBBERY	14	25	-44.0%	13	7.7%	14	13	7.7%
ARMED	9	21	-57.1%	12	-25.0%	9	12	-25.0%
STRONG-ARM	5	4	25.0%	1	400.0%	5	1	400.0%
AGGRAVATED ASSAULT	10	16	-37.5%	22	-54.5%	10	22	-54.5%
BURGLARY	79	89	-11.2%	92	-14.1%	79	92	-14.1%
RESIDENTIAL	69	82	-15.9%	78	-11.5%	69	78	-11.5%
COMMERCIAL	10	7	42.9%	14	-28.6%	10	14	-28.6%
LARCENY	106	115	-7.8%	103	2.9%	106	103	2.9%
FROM AUTO	43	56	-23.2%	45	-4.4%	43	45	-4.4%
BICYCLE	2	0	NA	2		2	2	0.0%
SHOPLIFTING	6	8	-25.0%	15	-60.0%	6	15	-60.0%
OTHERS	55	51	7.8%	41	34.1%	55	41	34.1%
VEHICLE THEFT	34	43	-20.9%	32	6.3%	34	32	6.3%
ARSON	0	3	-100.0%	2	-100.0%	0	2	-100.0%
TOTALS	244	293	-16.7%	265	-7.9%	244	265	-7.9%
VIOLENT PROPERTY	25 219	43 250	-41.9% -12.4%	36 229	-30.6% -4.4%	25 219	36 229	-30.6% -4.4%

Independence Division (17)								
	<u>Current</u> <u>month</u>	<u>Previous</u> <u>Month</u>	<u>Percent</u> <u>Change</u>	<u>Same Month</u> <u>Last Year</u>	<u>Percent</u> <u>Change</u>	<u>Current Year-</u> <u>to-Date</u>	<u>Past Year-</u> <u>to-Date</u>	<u>Percent</u> <u>Change</u>
MURDER & NON-NEGLIGENT MANSLAUGHTER	0	2	-100.0%	0	NA	0	0	NA
RAPE	2	1	100.0%	2	0.0%	2	2	0.0%
ROBBERY	19	28	-32.1%	22	-13.6%	19	22	-13.6%
ARMED	15	24	-37.5%	17	-11.8%	15	17	-11.8%
STRONG-ARM	4	4	0.0%	5	-20.0%	4	5	-20.0%
AGGRAVATED ASSAULT	18	22	-18.2%	12	50.0%	18	12	50.0%
BURGLARY	62	71	-12.7%	85	-27.1%	62	85	-27.1%
RESIDENTIAL	49	59	-16.9%	66	-25.8%	49	66	-25.8%
COMMERCIAL	13	12	8.3%	19	-31.6%	13	19	-31.6%
LARCENY	161	156	3.2%	139	15.8%	161	139	15.8%
FROM AUTO	84	73	15.1%	68	23.5%	84	68	23.5%
BICYCLE	1	0	NA	1		1	1	0.0%
SHOPLIFTING	17	19	-10.5%	21	-19.0%	17	21	-19.0%
OTHERS	59	64	-7.8%	49	20.4%	59	49	20.4%
VEHICLE THEFT	43	37	16.2%	46	-6.5%	43	46	-6.5%
ARSON	0	0	NA	2	-100.0%	0	2	-100.0%
TOTALS	305	317	-3.8%	308	-1.0%	305	308	-1.0%
VIOLENT PROPERTY	39 266	53 264	-26.4% 0.8%	36 272	8.3% -2.2%	39 266	36 272	8.3% -2.2%

South Service Area: Index Offenses Reported By Division, January, 2007

Providence Division (16)								
	<u>Current month</u>	<u>Previous Month</u>	<u>Percent Change</u>	<u>Same Month Last Year</u>	<u>Percent Change</u>	<u>Current Year-to-Date</u>	<u>Past Year-to-Date</u>	<u>Percent Change</u>
MURDER & NON-NEGLIGENT MANSLAUGHTER	0	0	NA	1	-100.0%	0	1	-100.0%
RAPE	0	1	-100.0%	1	-100.0%	0	1	-100.0%
ROBBERY	11	9	22.2%	4	175.0%	11	4	175.0%
ARMED	6	8	-25.0%	2	200.0%	6	2	200.0%
STRONG-ARM	5	1	400.0%	2	150.0%	5	2	150.0%
AGGRAVATED ASSAULT	14	11	27.3%	9	55.6%	14	9	55.6%
BURGLARY	85	119	-28.6%	103	-17.5%	85	103	-17.5%
RESIDENTIAL	61	61	0.0%	50	22.0%	61	50	22.0%
COMMERCIAL	24	58	-58.6%	53	-54.7%	24	53	-54.7%
LARCENY	272	219	24.2%	156	74.4%	272	156	74.4%
FROM AUTO	169	126	34.1%	72	134.7%	169	72	134.7%
BICYCLE	1	2	-50.0%	0		1	0	NA
SHOPLIFTING	19	16	18.8%	32	-40.6%	19	32	-40.6%
OTHERS	83	75	10.7%	52	59.6%	83	52	59.6%
VEHICLE THEFT	24	51	-52.9%	35	-31.4%	24	35	-31.4%
ARSON	0	1	-100.0%	2	-100.0%	0	2	-100.0%
TOTALS	406	411	-1.2%	311	30.5%	406	311	30.5%
VIOLENT PROPERTY	25	21	19.0%	15	66.7%	25	15	66.7%
PROPERTY	381	390	-2.3%	296	28.7%	381	296	28.7%

South Division (22)								
	<u>Current month</u>	<u>Previous Month</u>	<u>Percent Change</u>	<u>Same Month Last Year</u>	<u>Percent Change</u>	<u>Current Year-to-Date</u>	<u>Past Year-to-Date</u>	<u>Percent Change</u>
MURDER & NON-NEGLIGENT MANSLAUGHTER	0	0	NA	3	-100.0%	0	3	-100.0%
RAPE	1	2	-50.0%	2	-50.0%	1	2	-50.0%
ROBBERY	6	9	-33.3%	2	200.0%	6	2	200.0%
ARMED	5	8	-37.5%	2	150.0%	5	2	150.0%
STRONG-ARM	1	1	0.0%	0	NA	1	0	NA
AGGRAVATED ASSAULT	6	6	0.0%	17	-64.7%	6	17	-64.7%
BURGLARY	41	61	-32.8%	45	-8.9%	41	45	-8.9%
RESIDENTIAL	33	53	-37.7%	33	0.0%	33	33	0.0%
COMMERCIAL	8	8	0.0%	12	-33.3%	8	12	-33.3%
LARCENY	145	150	-3.3%	147	-1.4%	145	147	-1.4%
FROM AUTO	63	68	-7.4%	85	-25.9%	63	85	-25.9%
BICYCLE	1	2	-50.0%	0		1	0	NA
SHOPLIFTING	14	12	16.7%	8	75.0%	14	8	75.0%
OTHERS	67	68	-1.5%	54	24.1%	67	54	24.1%
VEHICLE THEFT	20	12	66.7%	30	-33.3%	20	30	-33.3%
ARSON	1	3	-66.7%	0	NA	1	0	NA
TOTALS	220	243	-9.5%	246	-10.6%	220	246	-10.6%
VIOLENT PROPERTY	13	17	-23.5%	24	-45.8%	13	24	-45.8%
PROPERTY	207	226	-8.4%	222	-6.8%	207	222	-6.8%

Southwest Service Area: Index Offenses Reported By Division, January, 2007

Westover Division (26)								
	<u>Current month</u>	<u>Previous Month</u>	<u>Percent Change</u>	<u>Same Month Last Year</u>	<u>Percent Change</u>	<u>Current Year-to-Date</u>	<u>Past Year-to-Date</u>	<u>Percent Change</u>
MURDER & NON-NEGLIGENT MANSLAUGHTER	1	2	-50.0%	1	0.0%	1	1	0.0%
RAPE	2	0	NA	2	0.0%	2	2	0.0%
ROBBERY	25	28	-10.7%	30	-16.7%	25	30	-16.7%
ARMED	16	20	-20.0%	27	-40.7%	16	27	-40.7%
STRONG-ARM	9	8	12.5%	3	200.0%	9	3	200.0%
AGGRAVATED ASSAULT	51	31	64.5%	56	-8.9%	51	56	-8.9%
BURGLARY	117	81	44.4%	111	5.4%	117	111	5.4%
RESIDENTIAL	52	30	73.3%	63	-17.5%	52	63	-17.5%
COMMERCIAL	65	51	27.5%	48	35.4%	65	48	35.4%
LARCENY	215	235	-8.5%	164	31.1%	215	164	31.1%
FROM AUTO	120	139	-13.7%	82	46.3%	120	82	46.3%
BICYCLE	1	1	0.0%	1		1	1	0.0%
SHOPLIFTING	30	26	15.4%	28	7.1%	30	28	7.1%
OTHERS	64	69	-7.2%	53	20.8%	64	53	20.8%
VEHICLE THEFT	37	32	15.6%	78	-52.6%	37	78	-52.6%
ARSON	4	4	0.0%	4	0.0%	4	4	0.0%
TOTALS	452	413	9.4%	446	1.3%	452	446	1.3%
VIOLENT PROPERTY	79 373	61 352	29.5% 6.0%	89 357	-11.2% 4.5%	79 373	89 357	-11.2% 4.5%

Steele Creek Division (21)								
	<u>Current month</u>	<u>Previous Month</u>	<u>Percent Change</u>	<u>Same Month Last Year</u>	<u>Percent Change</u>	<u>Current Year-to-Date</u>	<u>Past Year-to-Date</u>	<u>Percent Change</u>
MURDER & NON-NEGLIGENT MANSLAUGHTER	0	0	NA	0	NA	0	0	NA
RAPE	2	2	0.0%	3	-33.3%	2	3	-33.3%
ROBBERY	13	21	-38.1%	28	-53.6%	13	28	-53.6%
ARMED	11	18	-38.9%	23	-52.2%	11	23	-52.2%
STRONG-ARM	2	3	-33.3%	5	-60.0%	2	5	-60.0%
AGGRAVATED ASSAULT	26	18	44.4%	38	-31.6%	26	38	-31.6%
BURGLARY	101	94	7.4%	100	1.0%	101	100	1.0%
RESIDENTIAL	58	69	-15.9%	81	-28.4%	58	81	-28.4%
COMMERCIAL	43	25	72.0%	19	126.3%	43	19	126.3%
LARCENY	251	260	-3.5%	194	29.4%	251	194	29.4%
FROM AUTO	139	158	-12.0%	114	21.9%	139	114	21.9%
BICYCLE	1	2	-50.0%	0		1	0	NA
SHOPLIFTING	22	25	-12.0%	10	120.0%	22	10	120.0%
OTHERS	89	75	18.7%	70	27.1%	89	70	27.1%
VEHICLE THEFT	42	42	0.0%	38	10.5%	42	38	10.5%
ARSON	2	4	-50.0%	4	-50.0%	2	4	-50.0%
TOTALS	437	441	-0.9%	405	7.9%	437	405	7.9%
VIOLENT PROPERTY	41 396	41 400	0.0% -1.0%	69 336	-40.6% 17.9%	41 396	69 336	-40.6% 17.9%

West Service Area: Index Offenses Reported By Division, January, 2007

Metro Division (02)								
	<u>Current month</u>	<u>Previous Month</u>	<u>Percent Change</u>	<u>Same Month Last Year</u>	<u>Percent Change</u>	<u>Current Year-to-Date</u>	<u>Past Year-to-Date</u>	<u>Percent Change</u>
MURDER & NON-NEGLIGENT MANSLAUGHTER	3	-1	-400.0%	0	NA	3	0	NA
RAPE	2	1	100.0%	2	0.0%	2	2	0.0%
ROBBERY	29	34	-14.7%	34	-14.7%	29	34	-14.7%
ARMED	23	32	-28.1%	29	-20.7%	23	29	-20.7%
STRONG-ARM	6	2	200.0%	5	20.0%	6	5	20.0%
AGGRAVATED ASSAULT	41	32	28.1%	41	0.0%	41	41	0.0%
BURGLARY	85	92	-7.6%	115	-26.1%	85	115	-26.1%
RESIDENTIAL	50	60	-16.7%	59	-15.3%	50	59	-15.3%
COMMERCIAL	35	32	9.4%	56	-37.5%	35	56	-37.5%
LARCENY	124	154	-19.5%	161	-23.0%	124	161	-23.0%
FROM AUTO	55	77	-28.6%	80	-31.3%	55	80	-31.3%
BICYCLE	0	1	-100.0%	1		0	1	-100.0%
SHOPLIFTING	9	10	-10.0%	8	12.5%	9	8	12.5%
OTHERS	60	66	-9.1%	72	-16.7%	60	72	-16.7%
VEHICLE THEFT	32	33	-3.0%	52	-38.5%	32	52	-38.5%
ARSON	2	7	-71.4%	2	0.0%	2	2	0.0%
TOTALS	318	352	-9.7%	407	-21.9%	318	407	-21.9%
VIOLENT PROPERTY	75	66	13.6%	77	-2.6%	75	77	-2.6%
PROPERTY	243	286	-15.0%	330	-26.4%	243	330	-26.4%

Freedom Division (27)								
	<u>Current month</u>	<u>Previous Month</u>	<u>Percent Change</u>	<u>Same Month Last Year</u>	<u>Percent Change</u>	<u>Current Year-to-Date</u>	<u>Past Year-to-Date</u>	<u>Percent Change</u>
MURDER & NON-NEGLIGENT MANSLAUGHTER	2	3	-33.3%	0	NA	2	0	NA
RAPE	2	3	-33.3%	1	100.0%	2	1	100.0%
ROBBERY	24	36	-33.3%	14	71.4%	24	14	71.4%
ARMED	22	34	-35.3%	11	100.0%	22	11	100.0%
STRONG-ARM	2	2	0.0%	3	-33.3%	2	3	-33.3%
AGGRAVATED ASSAULT	32	33	-3.0%	15	113.3%	32	15	113.3%
BURGLARY	99	119	-16.8%	122	-18.9%	99	122	-18.9%
RESIDENTIAL	66	78	-15.4%	68	-2.9%	66	68	-2.9%
COMMERCIAL	33	41	-19.5%	54	-38.9%	33	54	-38.9%
LARCENY	253	269	-5.9%	197	28.4%	253	197	28.4%
FROM AUTO	149	153	-2.6%	103	44.7%	149	103	44.7%
BICYCLE	0	3	-100.0%	0		0	0	NA
SHOPLIFTING	13	23	-43.5%	27	-51.9%	13	27	-51.9%
OTHERS	91	90	1.1%	67	35.8%	91	67	35.8%
VEHICLE THEFT	53	55	-3.6%	52	1.9%	53	52	1.9%
ARSON	3	1	200.0%	3	0.0%	3	3	0.0%
TOTALS	468	519	-9.8%	404	15.8%	468	404	15.8%
VIOLENT PROPERTY	60	75	-20.0%	30	100.0%	60	30	100.0%
PROPERTY	408	444	-8.1%	374	9.1%	408	374	9.1%

Central Service Area: Index Offenses Reported By Division, January, 2007

Central Division (01)								
	<u>Current</u> <u>month</u>	<u>Previous</u> <u>Month</u>	<u>Percent</u> <u>Change</u>	<u>Same Month</u> <u>Last Year</u>	<u>Percent</u> <u>Change</u>	<u>Current Year-</u> <u>to-Date</u>	<u>Past Year-</u> <u>to-Date</u>	<u>Percent</u> <u>Change</u>
MURDER & NON-NEGLIGENT MANSLAUGHTER	1	0	NA	0	NA	1	0	NA
RAPE	0	3	-100.0%	3	-100.0%	0	3	-100.0%
ROBBERY	7	13	-46.2%	5	40.0%	7	5	40.0%
ARMED	4	8	-50.0%	3	33.3%	4	3	33.3%
STRONG-ARM	3	5	-40.0%	2	50.0%	3	2	50.0%
AGGRAVATED ASSAULT	13	15	-13.3%	7	85.7%	13	7	85.7%
BURGLARY	23	31	-25.8%	33	-30.3%	23	33	-30.3%
RESIDENTIAL	12	15	-20.0%	14	-14.3%	12	14	-14.3%
COMMERCIAL	11	16	-31.3%	19	-42.1%	11	19	-42.1%
LARCENY	190	176	8.0%	154	23.4%	190	154	23.4%
FROM AUTO	114	89	28.1%	77	48.1%	114	77	48.1%
BICYCLE	1	0	NA	0		1	0	NA
SHOPLIFTING	13	8	62.5%	8	62.5%	13	8	62.5%
OTHERS	62	79	-21.5%	69	-10.1%	62	69	-10.1%
VEHICLE THEFT	15	27	-44.4%	24	-37.5%	15	24	-37.5%
ARSON	1	0	NA	2	-50.0%	1	2	-50.0%
TOTALS	250	265	-5.7%	228	9.6%	250	228	9.6%
VIOLENT PROPERTY	21 229	31 234	-32.3% -2.1%	15 213	40.0% 7.5%	21 229	15 213	40.0% 7.5%

Arrests by Charlotte-Mecklenburg Police Department
Year-To-Date: 2006-2007
(Through January)

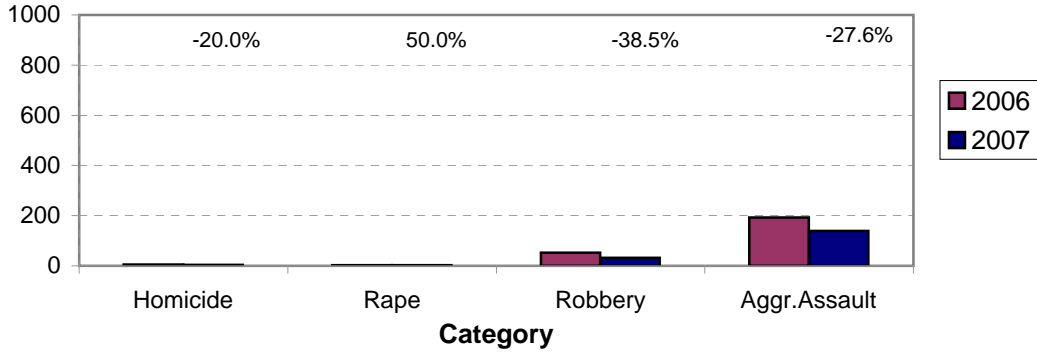
CATEGORY	ADULTS (AGE 18 & OLDER):			JUVENILES (UNDER 18):			TOTAL ARRESTS:		
	2005 Y-T-D	2006 Y-T-D	% CHANGE	2005 Y-T-D	2006 Y-T-D	% CHANGE	2005 Y-T-D	2006 Y-T-D	% CHANGE
Murder/Non-Negligent Manslaughter	5	4	-20.0%	0	0	NA	5	4	-20.0%
Negligent & Vehicular Manslaughter	1	0	-100.0%	0	0	NA	1	0	-100.0%
Rape	2	3	50.0%	0	0	NA	2	3	50.0%
Robbery	34	20	-41.2%	18	12	-33.3%	52	32	-38.5%
Aggravated Assault	150	121	-19.3%	42	18	-57.1%	192	139	-27.6%
Burglary	62	69	11.3%	23	32	39.1%	85	101	18.8%
Larceny	120	118	-1.7%	50	62	24.0%	170	180	5.9%
Vehicle Theft	5	3	-40.0%	11	7	-36.4%	16	10	-37.5%
Non-Aggravated Assault	183	157	-14.2%	68	63	-7.4%	251	220	-12.4%
Arson	2	1	-50.0%	3	1	-66.7%	5	2	-60.0%
Forgery/Counterfeit	17	5	-70.6%	0	0	NA	17	5	-70.6%
Fraud	41	42	2.4%	0	1	NA	41	43	4.9%
Embezzlement	10	11	10.0%	1	1	0.0%	11	12	9.1%
Stolen Property	61	42	-31.1%	14	15	7.1%	75	57	-24.0%
Vandalism	24	20	-16.7%	21	25	19.0%	45	45	0.0%
Weapons	64	79	23.4%	8	5	-37.5%	72	84	16.7%
Prostitution	28	5	-82.1%	0	0	NA	28	5	-82.1%
Sex Offenses	13	15	15.4%	0	1	NA	13	16	23.1%
Drugs	233	283	21.5%	38	44	15.8%	271	327	20.7%
Gambling	0	0	NA	0	0	NA	0	0	NA
Offenses vs. Family	1	0	-100.0%	0	0	NA	1	0	-100.0%
DUI	159	163	2.5%	3	0	-100.0%	162	163	0.6%
Liquor	8	21	162.5%	0	5	NA	8	26	225.0%
Disorder Conduct	48	50	4.2%	24	40	66.7%	72	90	25.0%
Other Non-Traffic	702	670	-4.6%	85	92	8.2%	787	762	-3.2%
VIOLENT INDEX¹	191	148	-22.5%	60	30	-50.0%	251	178	-29.1%
PROPERTY INDEX²	189	191	1.1%	87	102	17.2%	276	293	6.2%
INDEX SUBTOTAL	380	339	-10.8%	147	132	-10.2%	527	471	-10.6%
PART 2 SUBTOTAL³	1593	1563	-1.9%	262	292	11.5%	1855	1855	0.0%
TOTAL	1973	1902	-3.6%	409	424	3.7%	2382	2326	-2.4%

¹Violent Index includes murder and non-negligent manslaughter, rape, robbery, and aggravated assault.

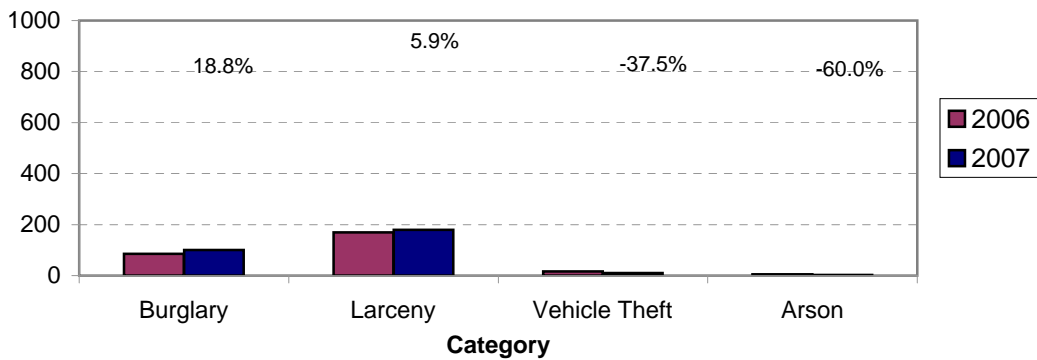
²Property Index includes burglary, larceny, vehicle theft, and arson.

³Part 2 crimes include crime categories not counted in the Index totals.

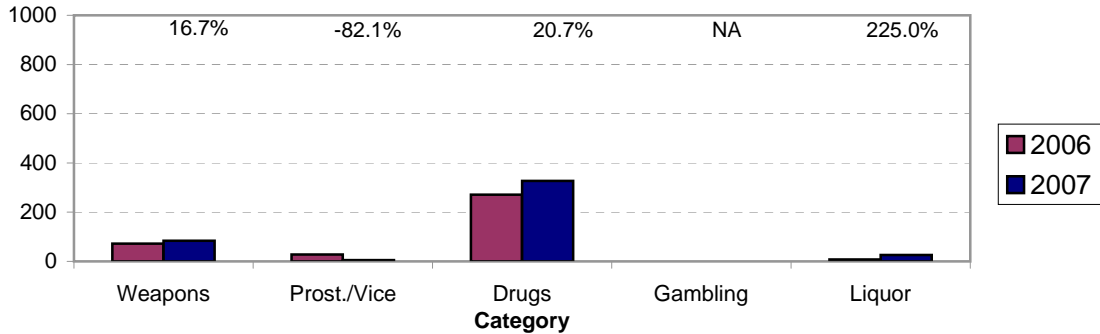
**Violent Index Arrests Year-to-Date
Charlotte-Mecklenburg Police Department: 2006-2007
(Through January)**



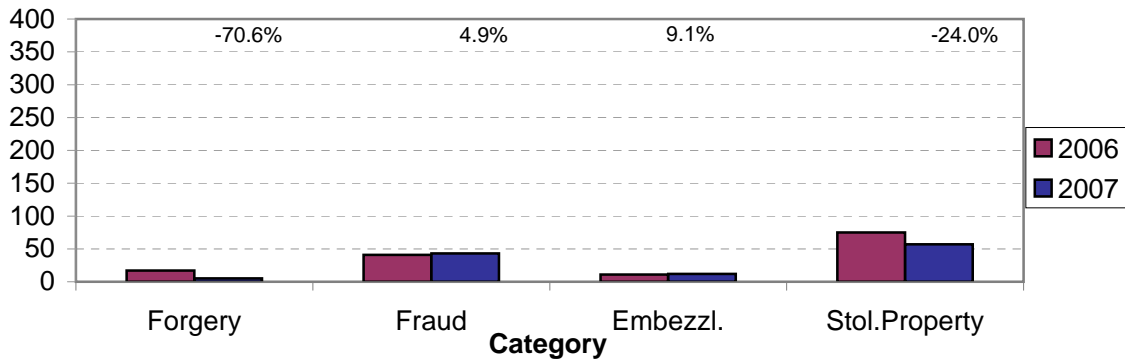
**Property Index Arrests Year-to-Date
Charlotte-Mecklenburg Police Department: 2006-2007
(Through January)**



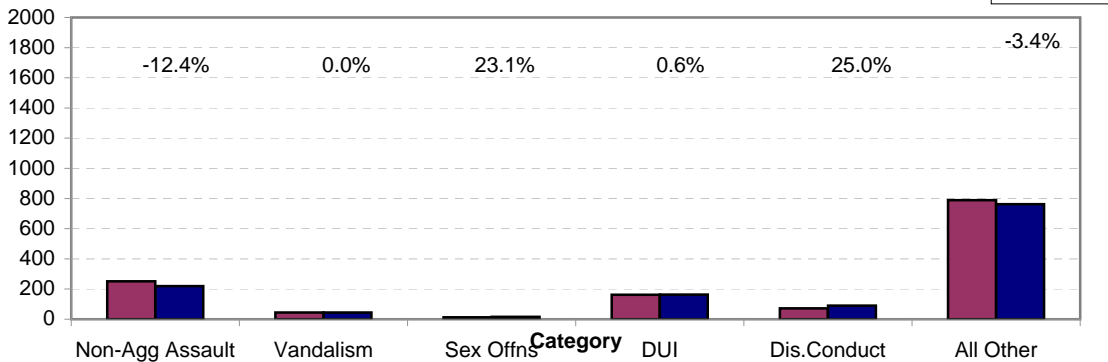
**Arrests for Vice/CCW/Drugs/Etc. Year-to-Date
Charlotte-Mecklenburg Police Department: 2006- 2007
(Through January)**



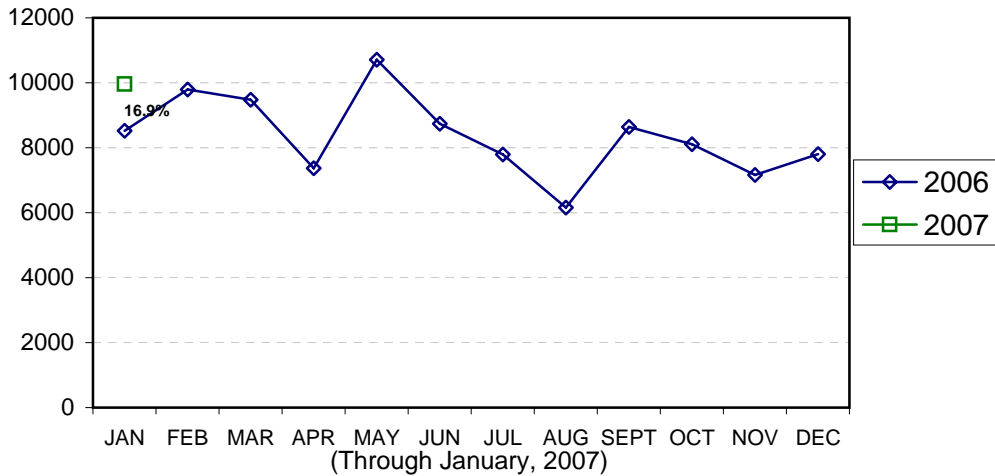
**Arrests for Property/White Collar Crime Year-to-Date
Charlotte-Mecklenburg Police Department: 2006- 2007
(Through January)**



**Arrests for Other Categories Year-to-Date
Charlotte-Mecklenburg Police Department: 2006 - 2007
(Through January)**

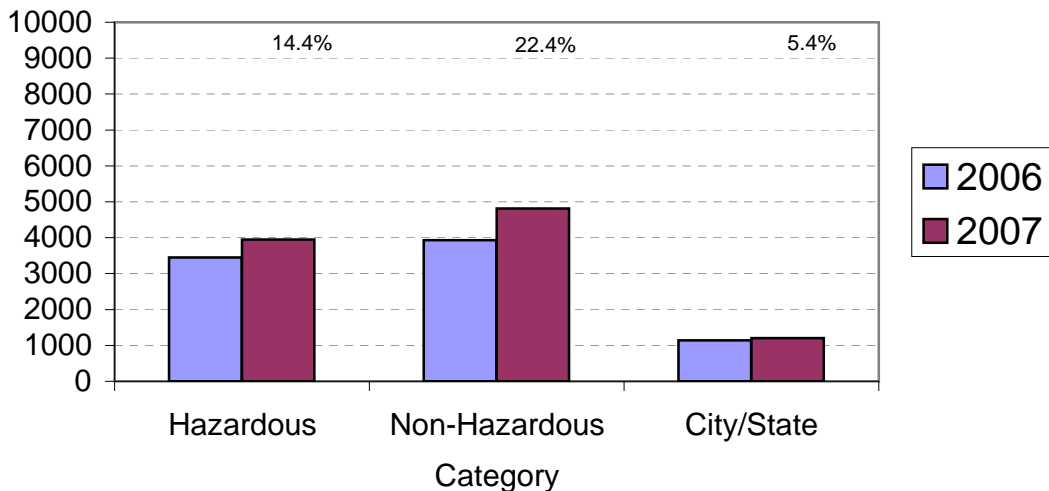


Total Citation Enforcement by Month Charlotte-Mecklenburg Police Dept.: 2004-2006



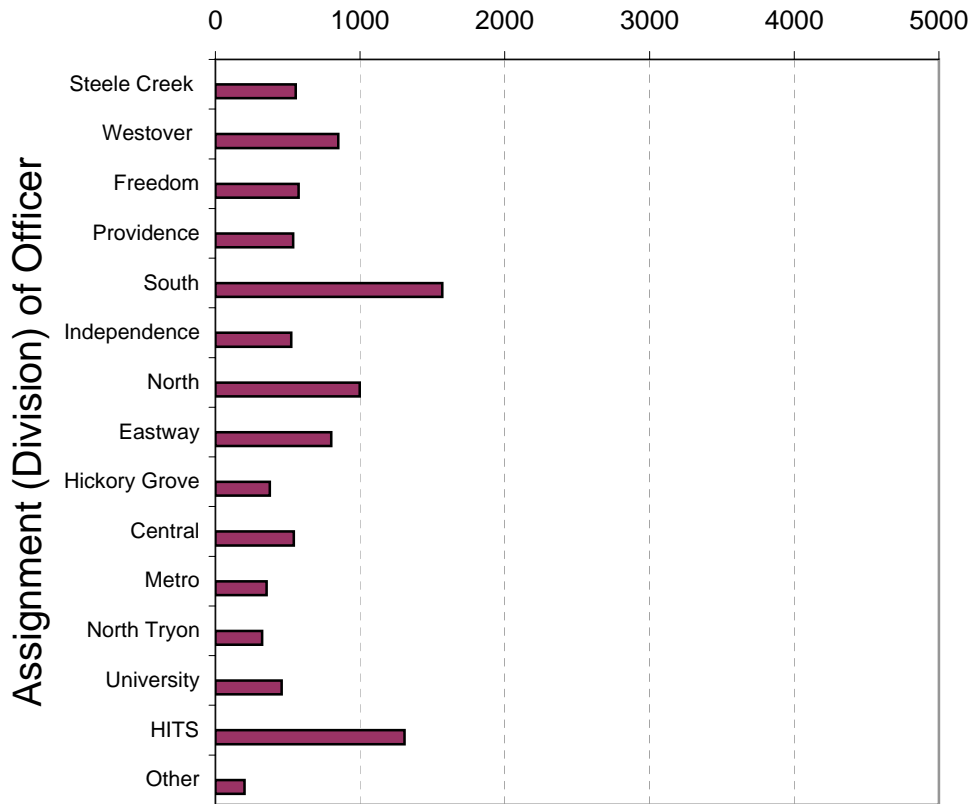
(Includes Hazardous, Non-Hazardous, and City/State Citations; percentages are current month compared to same month in previous year. Percentages are the change from current month to same month in past year. Monthly totals may be affected by data entry delays.)

CMPD Citation Enforcement by Category Year-to-Date, 2005 - 2006 (Through January, 2007)



**Citations Issued Year-to-Date by CMPD Divisions
2007**

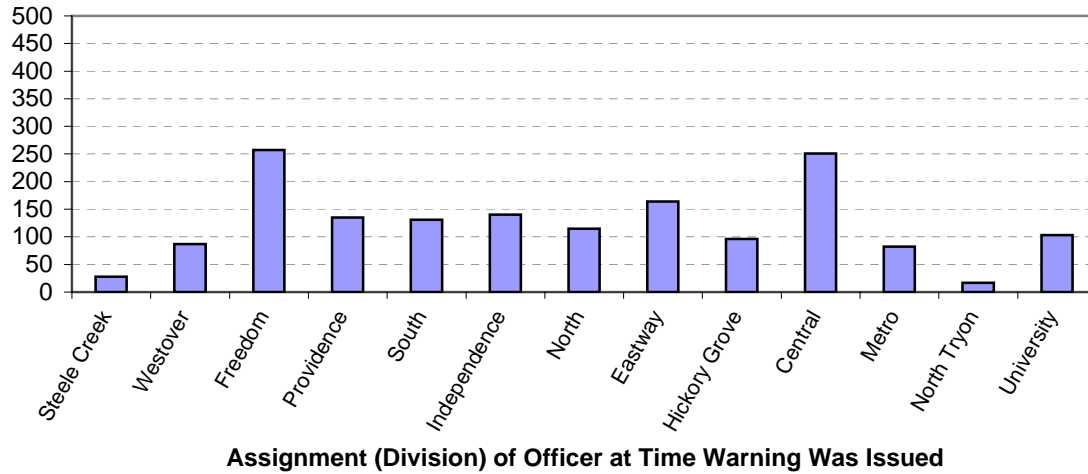
(Through January, 2007)



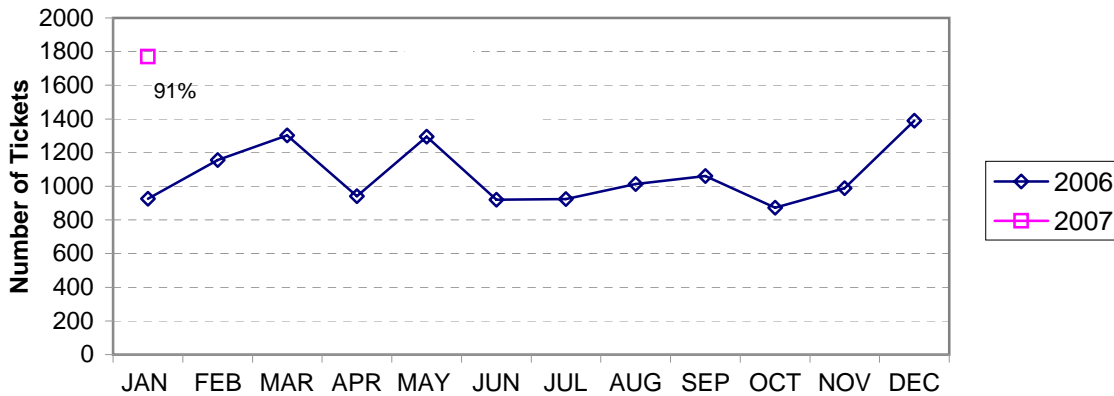
**Citations Reported by the Charlotte Mecklenburg Police Year-to-Date
(Through January, 2007)**

	2006	2007	% Change
Hazardous	3,451	3,948	14.4%
Non-Hazardous	3,931	4,810	22.4%
Other City/State Statute/Ordinance	1,143	1,205	5.4%
Total	8,525	9,963	16.9%

**Warning Ticket Violations Issued by Division
Charlotte-Mecklenburg Police Department, 2007
Through January, 2007**



**Total Warning Ticket Violations Issued by Month
Charlotte-Mecklenburg Police Department: 2006 - 2007**



**Warning Tickets Issued Year-to-Date
Charlotte-Mecklenburg Police Department
Through January, 2007**

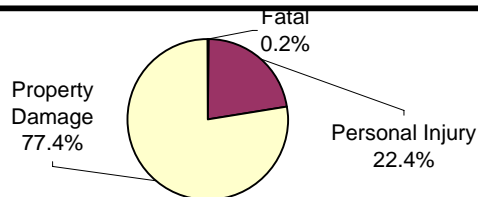
	2006	2007	% Change
Total Warning Tickets	925	1770	91.4%

**Traffic Collision Reports Recorded by
Charlotte-Mecklenburg Police Department
Year-to-Date: 2006-2007
(Through January)**

<u>Type</u>	<u>2006</u>	<u>2007</u>	<u>% Change</u>
Fatal Collisions	6	4	-33.3%
Vehicle Occupants Killed	7	5	-28.6%
Pedestrians Killed	0	0	NA
Personal Injury Collisions	480	495	3.1%
Property Damage Collisions	1636	1703	4.1%
Total Collisions	2122	2202	3.8%

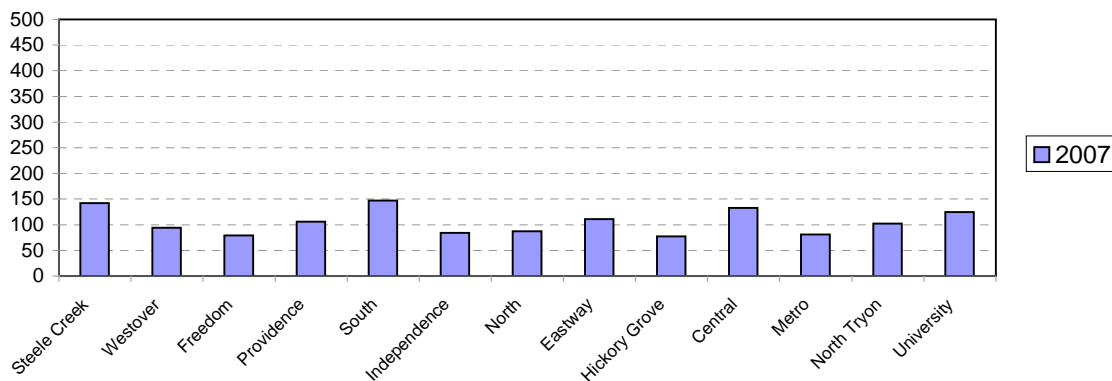
* The number of fatal collisions and the number of persons killed in those incidents is taken from the files of the CMPD Highway Interdiction Traffic Safety (HITS) unit. Their records are updated for deaths that occur after the initial report is filed.
All other numbers are based on the data entered by CMPD's Records Division from the initial DMV-349 reports forwarded to them by CMPD officers.

**Traffic Collision Reports by Type
Charlotte-Mecklenburg Police Department:
2007 Year-to-Date
(Through January)**



**Traffic Collision Reports - Charlotte-Mecklenburg Police Dept.
Year-to-Date By Location (Division) : 2007**

(Includes collision reports from January 13-January 31 only)



**CITIZEN-INITIATED CALLS FOR SERVICE¹ BY TYPE
CHARLOTTE-MECKLENBURG POLICE DEPARTMENT**

each r

<u>Type of Call²</u>	<u>2006 Year-to-Date⁵</u>	<u>2007 Year-to-Date⁵</u>	<u>Year-to-Date</u>
	<u>Through January</u>	<u>Through January</u>	<u>% Change</u>
ABC RELATED	147	134	-8.8%
ACCIDENT	2830	3034	7.2%
ALARM	2708	2899	7.1%
ANIMAL CONTROL ³	14	25	78.6%
ASSAULT	350	350	0.0%
ASSAULT WITH DEADLY WEAPON	138	184	33.3%
ASSIST OTHER AGENCY	643	634	-1.4%
BOMB THREAT	10	7	-30.0%
BREAK/ENTER	1915	1715	-10.4%
CDCP CLINICIAN VISIT ⁴	84	121	NA ⁴
COMMUNICATING THREATS	250	273	9.2%
COUNTY SECURITY ³	2	0	-100.0%
CRIMINAL INTELLIGENCE	1	1	0.0%
CRITICAL INCIDENT ⁴	3	2	-33.3%
DAMAGE TO PROPERTY	668	676	1.2%
DEATH	30	22	-26.7%
DISTURBANCE	2034	2065	1.5%
DOMESTIC INCIDENT	2860	2768	-3.2%
DRUG RELATED	285	344	20.7%
EXTORTION/BLACKMAIL ⁴	0	3	NA ⁴
FIGHT	302	192	-36.4%
FIRE CASE	6	10	66.7%
FRAUD/FORGERY	296	333	12.5%
GAMBLING	2	2	0.0%
HARASSMENT	162	192	18.5%
HIT AND RUN	600	665	10.8%
JUVENILE RELATED	177	149	-15.8%
KIDNAPPING	18	20	11.1%
LAKE ENFORCEMENT	2	4	100.0%
LARCENY	2383	2695	13.1%
LOITERING	449	415	-7.6%
MISSING PERSON	563	588	NA ⁴
NOISE COMPLAINT	1063	1062	-0.1%
OFFENSE AGAINST FAMILY	1	0	-100.0%
OFFICER CALLED IN	40	3	-92.5%
OVERDOSE	23	29	26.1%
PORNOGRAPHY	1	5	400.0%
PROPERTY	581	717	23.4%
PROSTITUTION	53	56	5.7%
PUBLIC SERVICE	1886	1233	-34.6%
QUALITY OF LIFE	209	46	-78.0%
ROBBERY	269	233	-13.4%
SEX CRIME	97	77	-20.6%
SPECIAL SERVICE REQUEST	0	2	NA
SUICIDE	105	109	3.8%
SUSPICIOUS PERSON	1701	1635	-3.9%
TRAFFIC RELATED	880	852	-3.2%
TRESPASS	272	319	17.3%
VEHICLE RELATED	2923	3009	2.9%
VIOLENT CRIMES TASK FORCE	0	1	NA
WARRANT RELATED	264	241	-8.7%
WEAPON RELATED	735	828	12.7%
911 HANG UP / CALLBACK	1072	848	-20.9%
			NA
TOTAL	32107	31827	-0.9%

¹These totals exclude duplicate and cancelled calls for service; they include calls handled by the Crime Reporting Unit as well as by division field officers, detectives and related CMPD staff.

²The type of call is determined from the 911 call, unless updated by an officer assigned to respond.

³In this summary, calls to Animal Control, Mecklenburg County Security, or Davidson Police are not included unless they also involve the dispatching of C-MPD field officers or detectives.

⁴This call type was not in use during part or all of the previous year or current year.

⁵Call totals may not match previously published totals due to adjustments for changes in call codes and procedures.

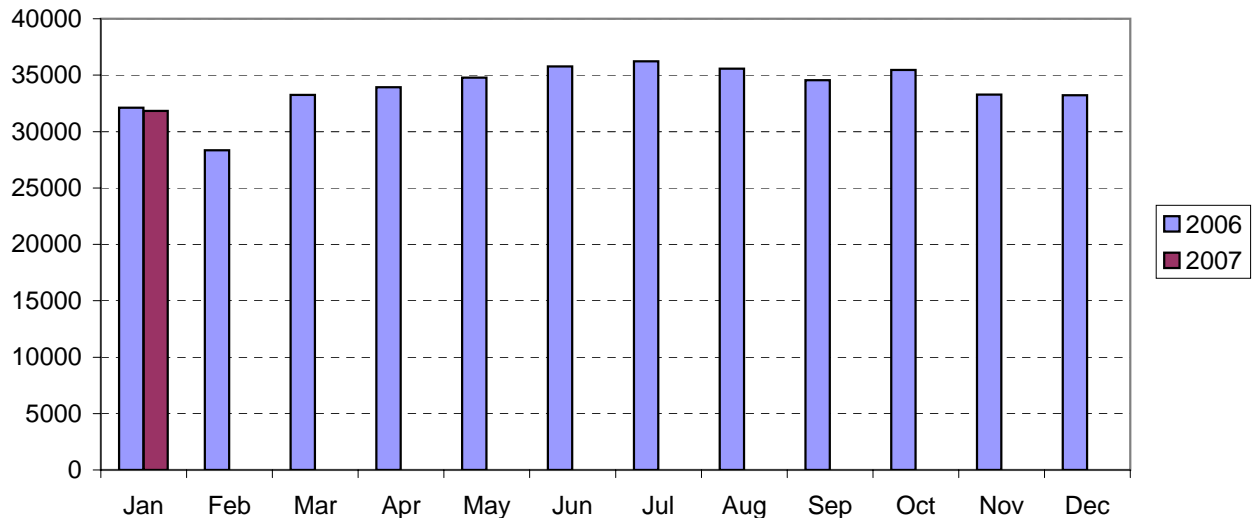
CITIZEN-INITIATED CALLS FOR SERVICE BY ORIGINATING CMPD DIVISION^{1,2}
 (Based on District of Call Origination, Not on Assigned District of Responding Units)

<u>District</u>	<u>2006 Year-to-Date Through January</u>	<u>2007 Year-to-Date Through January</u>	<u>Year-to-Date % Change</u>
Central-01	1816	1868	2.9%
Metro-02	2900	2756	-5.0%
Eastway-06	2715	2333	-14.1%
North Tryon-07	2338	2214	-5.3%
North-11 (C1)	2259	2512	11.2%
Hickory Grove-12	1933	2004	3.7%
University-14	2521	2487	-1.3%
Providence-16	2486	2446	-1.6%
Independence-17	2103	2205	4.9%
Steele Creek-21	2449	2535	3.5%
South-22	2213	2143	-3.2%
Westover-26	2717	2525	-7.1%
Freedom-27	2466	2425	-1.7%
Total²	30916	30453	-1.5%

¹These totals exclude duplicate and cancelled calls for service; they include calls handled by the Crime Reporting Unit as well as by division field officers, detectives and other CMPD staff.

²Calls where the location could not be assigned to one of the divisions are not included in this chart.

Citizen-Initiated Calls for Service¹ by Month
Charlotte-Mecklenburg Police Department: 2006-2007



¹These totals exclude duplicate and cancelled calls for service; they include calls handled by the Crime Reporting Unit as well as by division field officers, detectives and other CMPD staff.

Uniform Crime Reporting Procedures

The Charlotte-Mecklenburg Police Department reports offense and arrest statistics in accordance with standard Uniform Crime Reporting (UCR) guidelines. UCR policy states that any adjustments to previous months can be made on the current month's report:

...In tabulating crime counts, an agency may find that offense totals for past months require adjustments due to developments in the investigation or other handling of the matter. It may be necessary to adjust totals reported to UCR for the past month or prior months. Needed adjustments can be made on the current month's report and do not affect the reliability of the figures in that such adjustments tend to equalize each other from month to month over a period of time.

- *Uniform Crime Reporting Handbook*, FBI, 1984, p. 42-43

We are required to report crime monthly to the UCR program, and we do therefore make an effort to process monthly changes in a timely manner. However, occasionally due to the review and processing required for reclassifying, unfounding or clearing cases, the current month's totals may reflect the processing of a backlog of these changes from previous months.

Users of the data are cautioned that conclusions about substantial changes in crime trends or in clearance rates based on only a single month's data or trend may reflect some of these adjustments. For this reason, in addition to the monthly and year-to-date trends on Page 1, the monthly report routinely includes a comparison for the previous 12 months (p. 4), as well as graphs that provide seasonal/monthly comparisons over a five-year period (p. 5-8).

UCR Definitions and Terms:

Index Crime: the eight offenses that the national UCR program tracks on a yearly basis to gauge trends in the extent of crime, despite differences among state and local criminal statutes. These offenses were selected on the basis of several factors: seriousness, frequency of occurrence, pervasiveness in all geographic areas, and/or likelihood of being reported to law enforcement.

Violent Index: includes the offenses of murder/non-negligent manslaughter, rape, robbery, and aggravated assault

Property Index: includes the offenses of burglary, larceny, vehicle theft and arson

Murder/non-negligent manslaughter: the willful killing of one human being by another

Justifiable Homicide: limited by UCR to either a killing by a law enforcement officer in the line of duty or a killing by a citizen of a felon during the commission of a felony. If a homicide is determined to be "justifiable" by this definition, it is subtracted from the murder/non-negligent manslaughter category after investigation.

Rape: the carnal knowledge of a female forcibly and against her will [Note: This offense does not include other sex offenses or statutory (non-forcible) rape.]

Robbery: the taking or attempt to take anything of value from the care, custody, or control of a person or persons by force, threat of force or violence, or by putting the victim in fear.

Aggravated assault: an unlawful attack by one person on another for the purpose of inflicting severe or aggravated bodily injury; includes 1) all assaults in which a weapon of any type is used or is threatened to be used and/or 2) all assaults where serious injury occurs.

Burglary: the unlawful entry or attempted entry of a structure to commit a felony or a theft

Larceny-Theft: the unlawful taking (or attempt), carrying, leading, or riding away of property from the possession or constructive possession of another [Note: Larceny/theft of a motor vehicle is classed separately.]

Vehicle Theft: the theft or attempted theft of a motor vehicle (a self-propelled vehicle that runs on land and not on rails, excluding farm and construction equipment)

Arson: the willful or malicious burning or attempt to burn, with or without intent to defraud, a structure, motor vehicle, personal property of another, etc.

Hierarchy rule: For cases involving multiple-offenses, the incident is classified and counted based on the highest offense on a hierarchy of crimes established by UCR. For example, for an incident involving a rape and a burglary, the incident would be counted in the rape category because rape is higher than burglary on the hierarchy.

Clearance: A case is considered cleared when either at least one arrest is made for the offense or when one offender's identity is established by investigation but the offender will not be arrested for reasons outside law enforcement control (offender dies, victim refuses to prosecute, district attorney declines prosecution, extradition is refused, etc.).

Unfounding: A case is "unfounded" and subtracted from the crime counts when investigation establishes that the incident did not actually occur or that the actions within the incident are not criminal based on current law.

For additional information, please consult the *UCR Handbook* on the FBI website at <http://www.fbi.gov/ucr/ucr.htm>.

This report was compiled by the Research, Planning, and Analysis Division; the new division Index crime data (under the boundaries adopted Jan 13, 2007) for previous months was compiled with the assistance of Becky Wilkins and Doris Bowen.

We make an effort to present the most accurate information available at the time this report is published. Please notify the Research, Planning, and Analysis office if you have any questions about the data in this report or about an error that was missed in proofing the report.

Veronica Sorban
Ed Williams