



**CHARLOTTE-MECKLENBURG POLICE DEPARTMENT
MONTHLY SUMMARY REPORT
FEBRUARY, 2007**

**Darrel Stephens
Chief of Police**

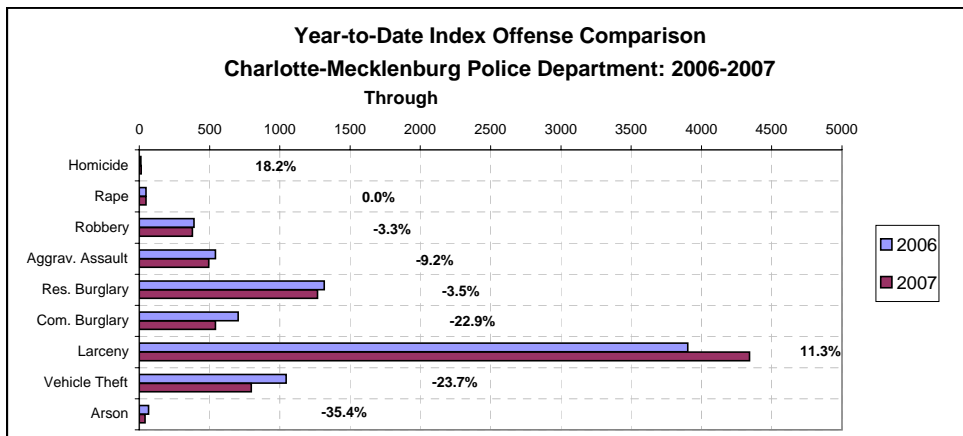
INDEX OFFENSES REPORTED TO CHARLOTTE-MECKLENBURG POLICE DEPARTMENT

February, 2007 INDEX OFFENSES	# THIS MONTH	% OF ALL INDEX	# LAST MONTH	MONTHLY % CHANGE	SAME MONTH LAST YEAR	MONTHLY % CHANGE	THIS YEAR TO DATE	LAST YEAR TO DATE	ANNUAL % CHANGE
HOMICIDE (MURDER & NON- NEGLIGENT MANSLAUGHTER)*	4	0.1%	9	-55.6%	4	0.0%	13	11	18.2%
RAPE TOTAL	27	0.8%	20	35.0%	21	28.6%	47	47	0.0%
ACTUAL	26	0.8%	19	36.8%	18	44.4%	45	43	4.7%
ATTEMPT	1	0.0%	1	0.0%	3	-66.7%	2	4	-50.0%
ROBBERY TOTAL	171	5.0%	206	-17.0%	152	12.5%	377	390	-3.3%
ARMED	132	3.9%	160	-17.5%	124	6.5%	292	324	-9.9%
STRONG-ARM	39	1.1%	46	-15.2%	28	39.3%	85	66	28.8%
AGGRAVATED ASSAULT TOTAL	210	6.1%	283	-25.8%	242	-13.2%	493	543	-9.2%
BURGLARY TOTAL	742	21.7%	1069	-30.6%	796	-6.8%	1811	2018	-10.3%
RESIDENTIAL	522	15.2%	747	-30.1%	543	-3.9%	1269	1315	-3.5%
COMMERCIAL	220	6.4%	322	-31.7%	253	-13.0%	542	703	-22.9%

FORCE	598	17.5%	886	-32.5%	661	-9.5%	1484	1673	-11.3%
NO FORCE	85	2.5%	121	-29.8%	80	6.3%	206	194	6.2%
ATTEMPT	59	1.7%	62	-4.8%	55	7.3%	121	151	-19.9%
LARCENY TOTAL	1902	55.5%	2439	-22.0%	1837	3.5%	4341	3902	11.3%
\$200 AND OVER	967	28.2%	1253	-22.8%	937	3.2%	2220	1978	12.2%
\$50 TO \$200	347	10.1%	412	-15.8%	338	2.7%	759	742	2.3%
UNDER \$50	588	17.2%	774	-24.0%	562	4.6%	1362	1182	15.2%

FROM AUTO	976	28.5%	1304	-25.2%	926	5.4%	2280	2018	13.0%
BICYCLE	9	0.3%	9	0.0%	7	28.6%	18	16	12.5%
SHOPLIFTING	172	5.0%	227	-24.2%	193	-10.9%	399	416	-4.1%
OTHERS	745	21.7%	899	-17.1%	711	4.8%	1644	1452	13.2%
VEHICLE THEFT TOTAL	352	10.3%	445	-20.9%	462	-23.8%	797	1045	-23.7%
ARSON TOTAL	18	0.5%	24	-25.0%	38	-52.6%	42	65	-35.4%
TOTALS	3426	100.0%	4495	-23.8%	3552	-3.5%	7921	8021	-1.2%
VIOLENT PROPERTY	412 3014	12.0% 88.0%	518 3977	-20.5% -24.2%	419 3133	-1.7% -3.8%	930 6991	991 7030	-6.2% -0.6%

*NOTE: These totals include offenses reported to the Charlotte-Mecklenburg Police Department in accordance with the Uniform Crime Reporting (UCR) Program. Because the data in this report is primarily based on the automated Records Management System, cases counted this month may include offenses from previous months/years that were reclassified after investigation. Homicide totals do not include cases classed as justifiable homicides by UCR rules (See the glossary at the end of this report for the UCR definition of justifiable homicide).

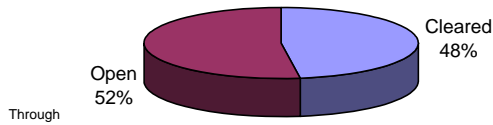


INDEX CLEARANCES REPORTED BY THE CHARLOTTE-MECKLENBURG POLICE DEPARTMENT

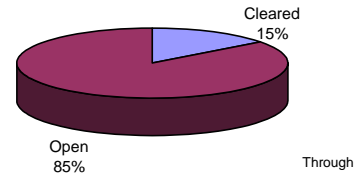
February, 2007 INDEX CLEARANCES	THIS MONTH:		LAST MONTH:		SAME MO. LAST YR:		THIS YEAR TO DATE:		LAST YEAR TO DATE:	
	NO.	%	NO.	%	NO.	%	NO.	%	NO.	%
MURDER & NON-NEGLIGENT MANSLAUGHTER ¹	1	25.0%	7	77.8%	0	0.0%	8	61.5%	5	45.5%
RAPE TOTAL	21	77.8%	15	75.0%	20	95.2%	36	76.6%	37	78.7%
ACTUAL	19	73.1%	15	78.9%	18	100.0%	34	75.6%	35	81.4%
ATTEMPT	2	200.0%	0	0.0%	2	66.7%	2	100.0%	2	50.0%
ROBBERY TOTAL	55	32.2%	66	32.0%	81	53.3%	121	32.1%	187	47.9%
ARMED	50	37.9%	55	34.4%	66	53.2%	105	36.0%	145	44.8%
STRONG-ARM	5	12.8%	11	23.9%	15	53.6%	16	18.8%	42	63.6%
AGGRAVATED ASSAULT TOTAL	117	55.7%	163	57.6%	166	68.6%	280	56.8%	340	62.6%
BURGLARY TOTAL	161	21.7%	116	10.9%	85	10.7%	277	15.3%	183	9.1%
RESIDENTIAL	92	17.6%	72	9.6%	69	12.7%	164	12.9%	144	11.0%
COMMERCIAL	69	31.4%	44	13.7%	16	6.3%	113	20.8%	39	5.5%
LARCENY TOTAL	227	11.9%	367	15.0%	365	19.9%	594	13.7%	694	17.8%
FROM AUTO	18	1.8%	53	4.1%	32	3.5%	71	3.1%	78	3.9%
BICYCLE	-1	-11.1%	0	0.0%	1	14.3%	-1	-5.6%	3	18.8%
SHOPLIFTING	109	63.4%	149	65.6%	139	72.0%	258	64.7%	283	68.0%
OTHERS	101	13.6%	165	18.4%	193	27.1%	266	16.2%	330	22.7%
VEHICLE THEFT TOTAL	62	17.6%	83	18.7%	72	15.6%	145	18.2%	160	15.3%
ARSON TOTAL	4	22.2%	3	12.5%	8	21.1%	7	16.7%	21	32.3%
TOTALS	648	18.9%	820	18.2%	797	22.4%	1468	18.5%	1627	20.3%
VIOLENT PROPERTY	194	47.1%	251	48.5%	267	63.7%	445	47.8%	569	57.4%
	454	15.1%	569	14.3%	530	16.9%	1023	14.6%	1058	15.0%

¹NOTE : Clearances are reported in accordance with Uniform Crime Report guidelines. Since clearances are not counted for UCR until they are entered in the Records Management system, any delays in entry of the documentation may result in some clearances being reported later in succeeding months. December, 2006 clearances may reflect efforts by some divisions to complete late data entry before the redistricting in January 2007. Clearances for Homicide in December include the manual addition of 3 clearances in 2006 for cases that occurred prior to 2001.

**Year-to-Date Violent Index Clearance Rate
Charlotte-Mecklenburg Police Department: 2006**

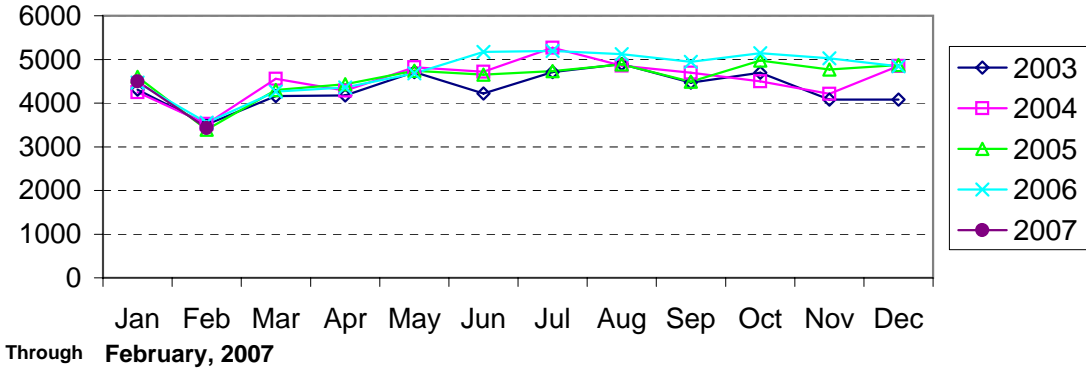


**Year-to-Date Property Index Clearance Rate
Charlotte-Mecklenburg Police Department: 2006**

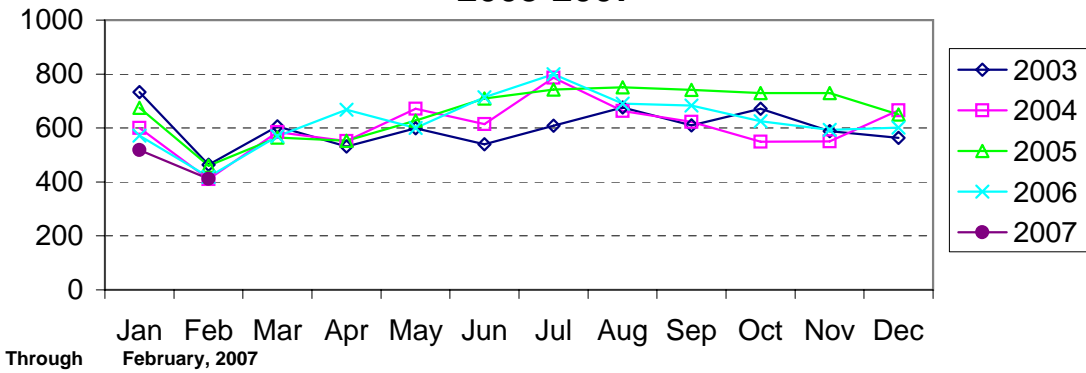


Clearance rates for crime reporting are calculated by dividing the number of crimes cleared during a designated time span by the number of crimes reported in the same period and converting the result to a percentage (multiplying by 100). Since cases from previous reporting periods can be cleared during the designated time span, the rate may be higher than 100%.

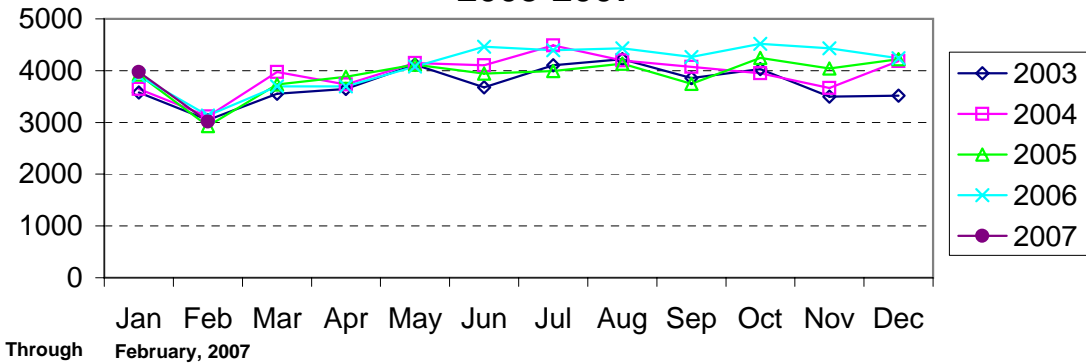
Index Offenses Reported by Month Charlotte-Mecklenburg Police Department: 2003-2007



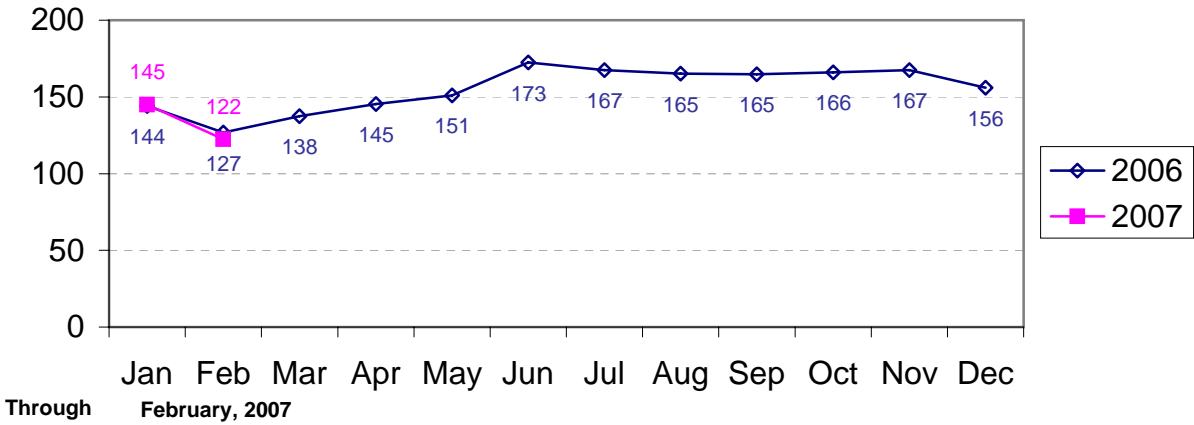
Violent Index Offenses Reported by Month Charlotte-Mecklenburg Police Department: 2003-2007



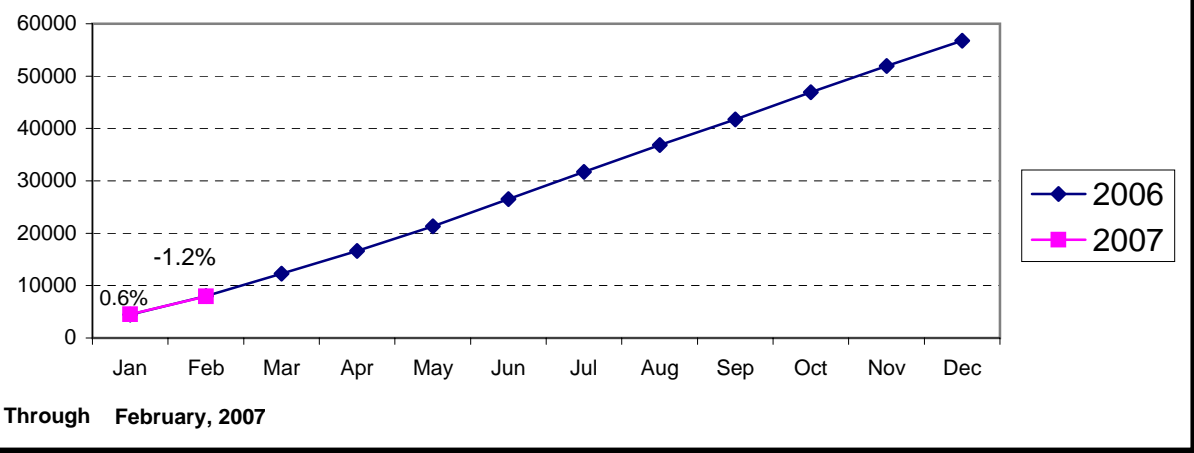
Property Index Offenses Reported by Month Charlotte-Mecklenburg Police Department: 2003-2007

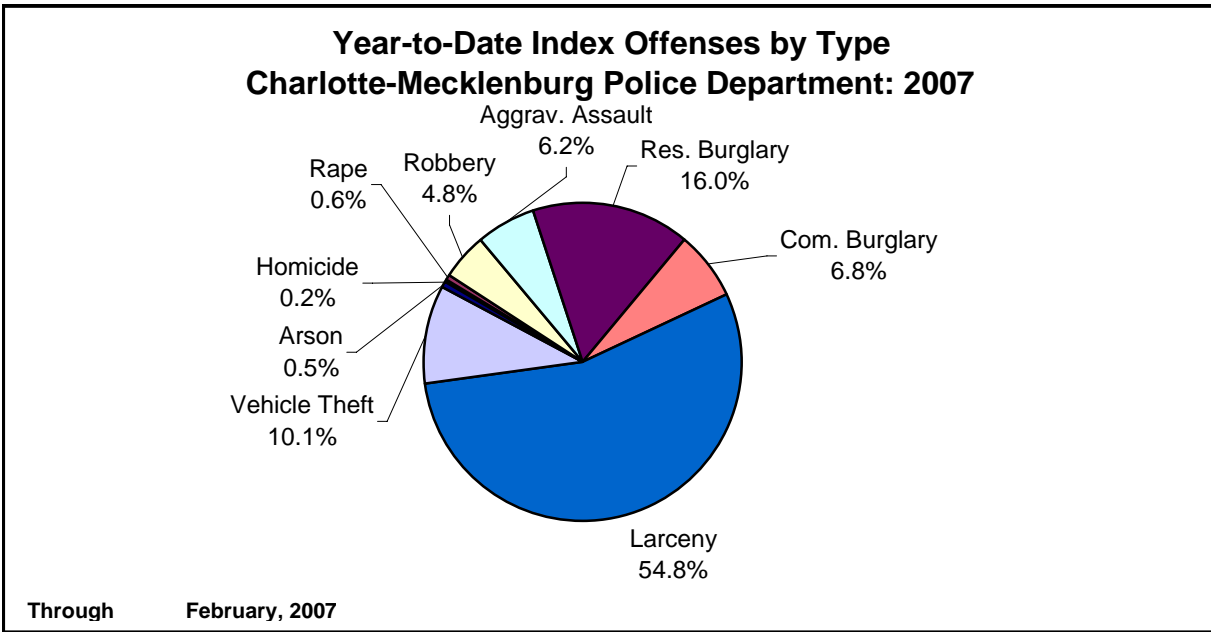
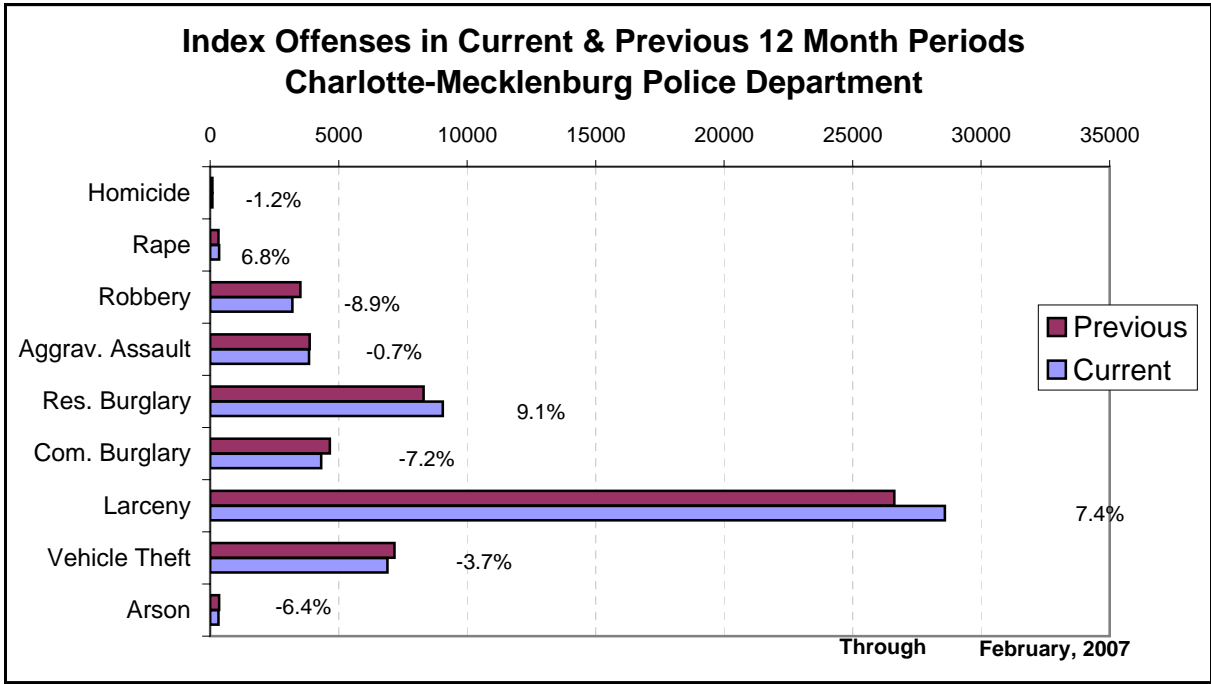


Index Offense Per Day Average by Month Charlotte-Mecklenburg Police Department: 2006-2007

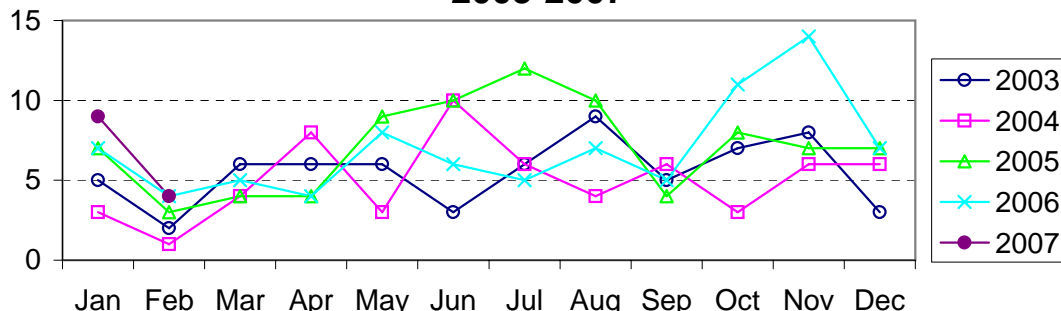


Index Offenses Year-to-Date Cumulative Totals Charlotte-Mecklenburg Police Department: 2005-2006





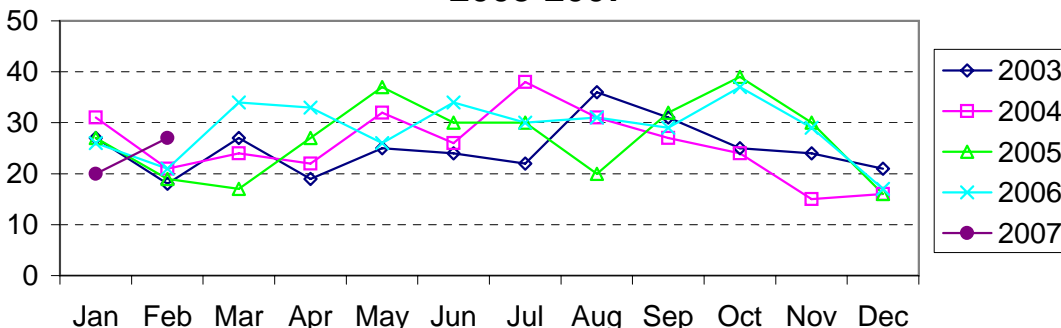
Homicide Reported by Month Charlotte-Mecklenburg Police Department: 2003-2007



Note: These totals reflect the month that the cases were classed as homicide and reported to The UCR program, not the month of occurrence.

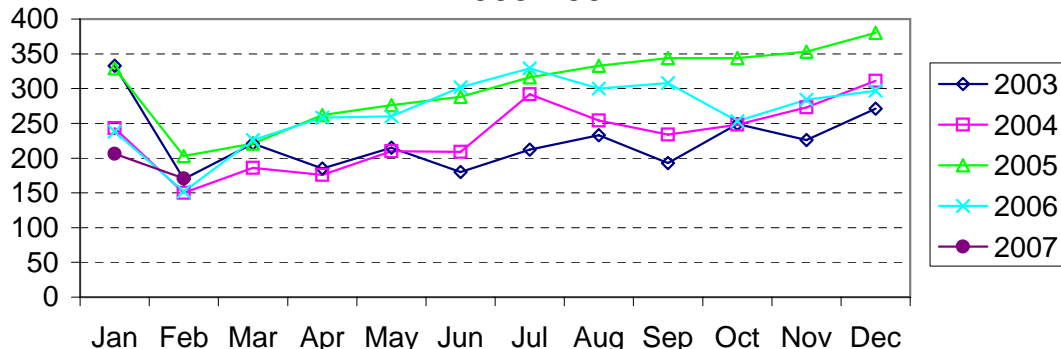
Through February, 2007

Rape Reported by Month Charlotte-Mecklenburg Police Department: 2003-2007



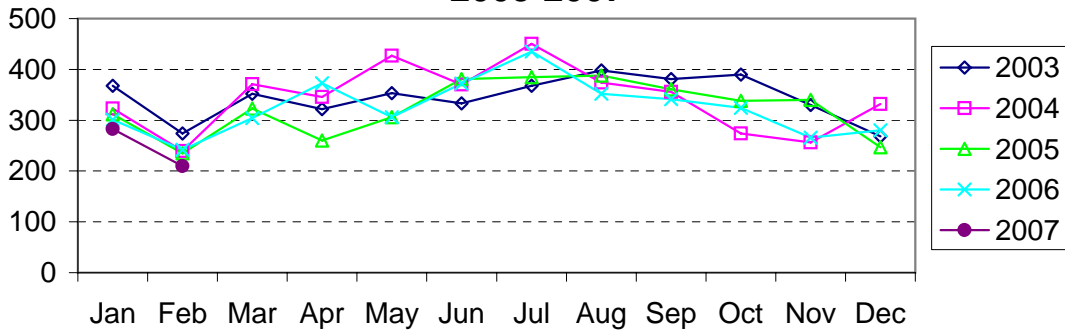
Through February, 2007

Robbery Reported by Month Charlotte-Mecklenburg Police Department: 2003-2007



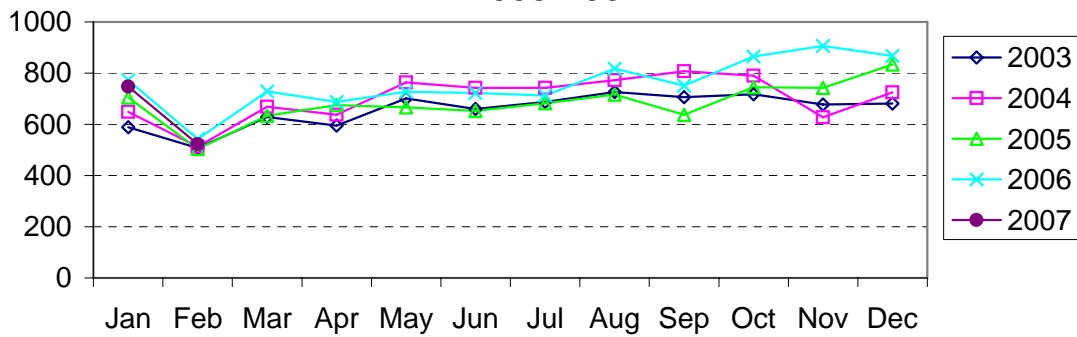
Through February, 2007

**Aggravated Assault Reported by Month
Charlotte-Mecklenburg Police Department:
2003-2007**



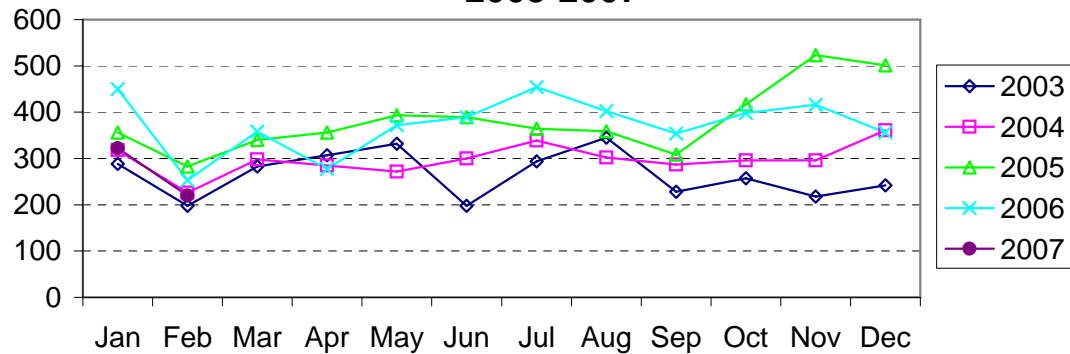
Through February, 2007

**Residential Burglary Reported by Month
Charlotte-Mecklenburg Police Department:
2003-2007**



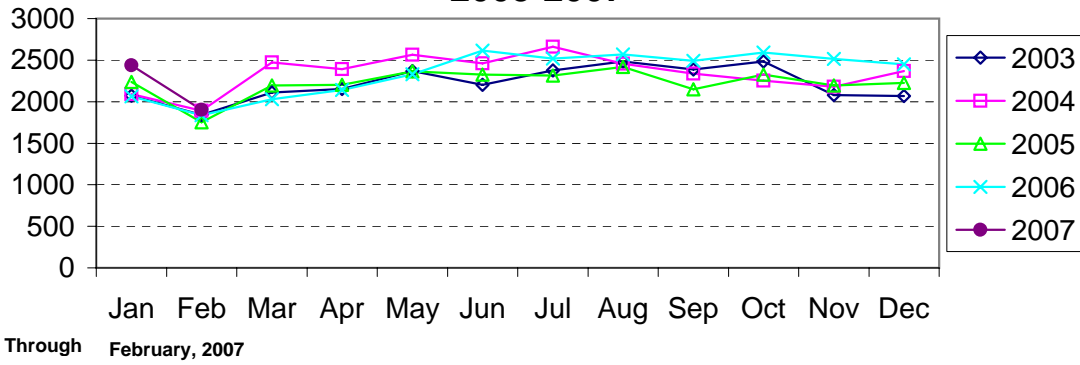
Through February, 2007

**Commercial Burglary Reported by Month
Charlotte-Mecklenburg Police Department:
2003-2007**

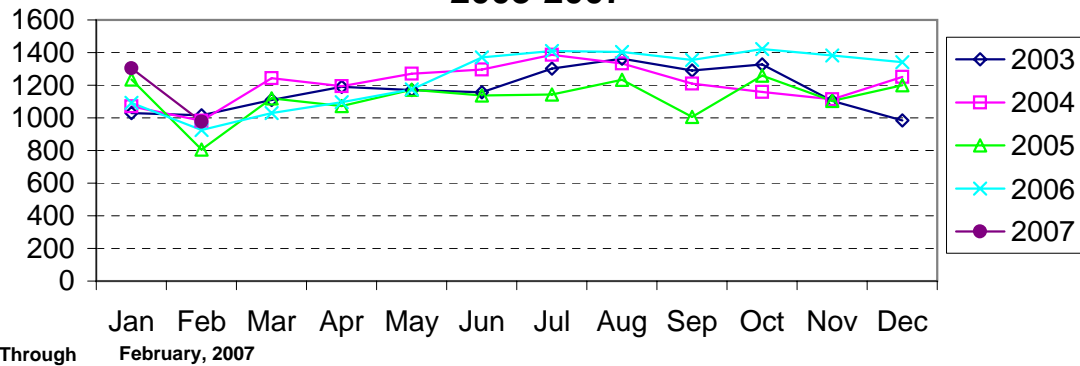


Through February, 2007

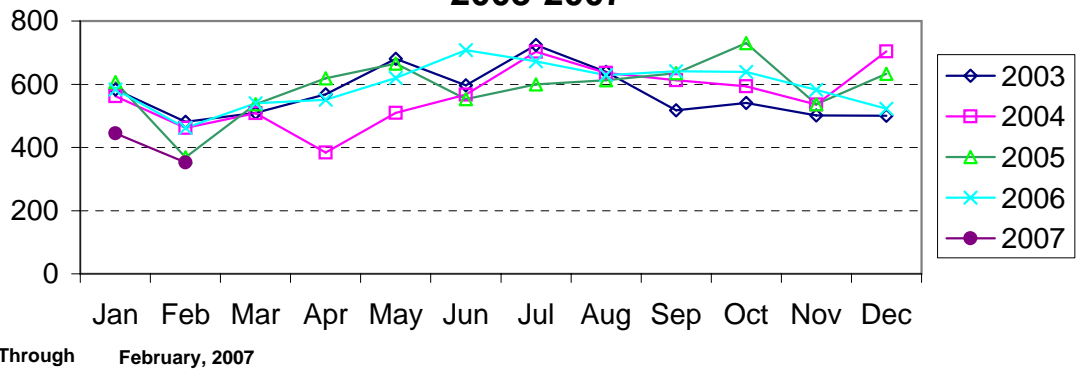
**Larceny Reported by Month
Charlotte-Mecklenburg Police Department:
2003-2007**



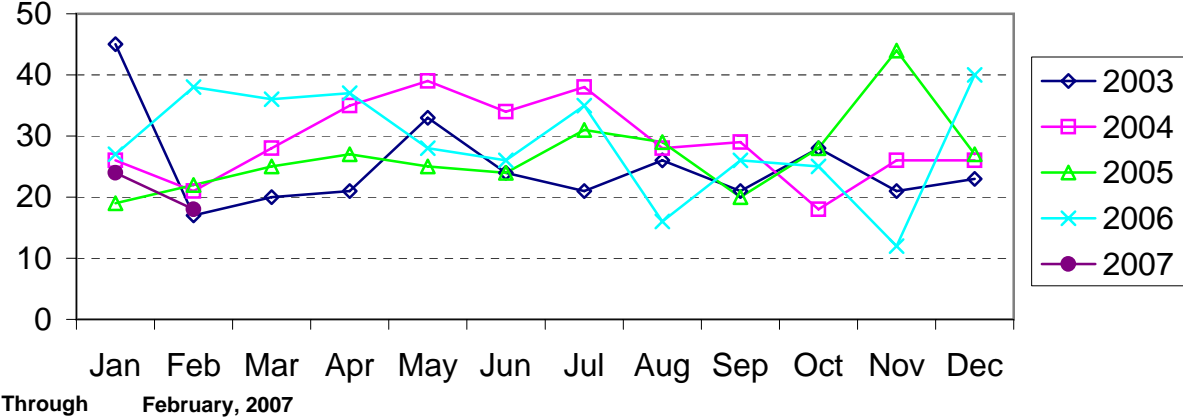
**Larceny from Vehicle Reported by Month
Charlotte-Mecklenburg Police Department:
2003-2007**



**Vehicle Theft Reported by Month
Charlotte-Mecklenburg Police Department:
2003-2007**



Arson Reported by Month Charlotte-Mecklenburg Police Department: 2003-2007



East Service Area: Index Offenses Reported By Division, February, 2007

Eastway Division (06)								
	<u>Current month</u>	<u>Previous Month</u>	<u>Percent Change</u>	<u>Same Month Last Year</u>	<u>Percent Change</u>	<u>Current Year-to-Date</u>	<u>Past Year-to-Date</u>	<u>Percent Change</u>
MURDER & NON-NEGLIGENT MANSLAUGHTER	0	1	-100.0%	0	NA	1	1	0.0%
RAPE	0	2	-100.0%	1	-100.0%	2	3	-33.3%
ROBBERY	26	15	73.3%	19	36.8%	41	61	-32.8%
ARMED	23	14	64.3%	16	43.8%	37	51	-27.5%
STRONG-ARM	3	1	200.0%	3	0.0%	4	10	-60.0%
AGGRAVATED ASSAULT	10	22	-54.5%	10	0.0%	32	46	-30.4%
BURGLARY	52	81	-35.8%	54	-3.7%	133	133	0.0%
RESIDENTIAL	40	68	-41.2%	37	8.1%	108	95	13.7%
COMMERCIAL	12	13	-7.7%	17	-29.4%	25	38	-34.2%
LARCENY	134	132	1.5%	142	-5.6%	266	302	-11.9%
FROM AUTO	62	59	5.1%	59	5.1%	121	131	-7.6%
BICYCLE	1	0	NA	0		1	0	NA
SHOPLIFTING	22	26	-15.4%	28	-21.4%	48	56	-14.3%
OTHERS	49	47	4.3%	55	-10.9%	96	115	-16.5%
VEHICLE THEFT	22	48	-54.2%	45	-51.1%	70	109	-35.8%
ARSON	1	2	-50.0%	2	-50.0%	3	4	-25.0%
TOTALS	245	303	-19.1%	273	-10.3%	548	659	-16.8%
VIOLENT PROPERTY	36	40	-10.0%	30	20.0%	76	111	-31.5%
PROPERTY	209	263	-20.5%	243	-14.0%	472	548	-13.9%

North Tryon Division (07)								
	<u>Current month</u>	<u>Previous Month</u>	<u>Percent Change</u>	<u>Same Month Last Year</u>	<u>Percent Change</u>	<u>Current Year-to-Date</u>	<u>Past Year-to-Date</u>	<u>Percent Change</u>
MURDER & NON-NEGLIGENT MANSLAUGHTER	1	1	0.0%	0	NA	2	1	100.0%
RAPE	2	1	100.0%	3	-33.3%	3	6	-50.0%
ROBBERY	31	23	34.8%	11	181.8%	54	30	80.0%
ARMED	27	16	68.8%	8	237.5%	43	25	72.0%
STRONG-ARM	4	7	-42.9%	3	33.3%	11	5	120.0%
AGGRAVATED ASSAULT	34	24	41.7%	25	36.0%	58	49	18.4%
BURGLARY	58	82	-29.3%	106	-45.3%	140	223	-37.2%
RESIDENTIAL	44	54	-18.5%	77	-42.9%	98	142	-31.0%
COMMERCIAL	14	28	-50.0%	29	-51.7%	42	81	-48.1%
LARCENY	107	143	-25.2%	116	-7.8%	250	239	4.6%
FROM AUTO	66	73	-9.6%	55	20.0%	139	139	0.0%
BICYCLE	0	0	NA	1		0	3	-100.0%
SHOPLIFTING	3	5	-40.0%	11	-72.7%	8	13	-38.5%
OTHERS	38	65	-41.5%	49	-22.4%	103	84	22.6%
VEHICLE THEFT	44	50	-12.0%	42	4.8%	94	96	-2.1%
ARSON	1	2	-50.0%	5	-80.0%	3	6	-50.0%
TOTALS	278	326	-14.7%	308	-9.7%	604	650	-7.1%
VIOLENT PROPERTY	68	49	38.8%	39	74.4%	117	86	36.0%
PROPERTY	210	277	-24.2%	269	-21.9%	487	564	-13.7%

North Service Area: Index Offenses Reported By Division, February, 2007

North Division (11)								
	<u>Current month</u>	<u>Previous Month</u>	<u>Percent Change</u>	<u>Same Month Last Year</u>	<u>Percent Change</u>	<u>Current Year-to-Date</u>	<u>Past Year-to-Date</u>	<u>Percent Change</u>
MURDER & NON-NEGLIGENT MANSLAUGHTER	0	0	NA	0	NA	0	0	NA
RAPE	5	3	66.7%	-1	-600.0%	8	2	300.0%
ROBBERY	10	9	11.1%	4	150.0%	19	12	58.3%
ARMED	7	9	-22.2%	4	75.0%	16	12	33.3%
STRONG-ARM	3	0	NA	0	NA	3	0	NA
AGGRAVATED ASSAULT	21	21	0.0%	22	-4.5%	42	37	13.5%
BURGLARY	106	147	-27.9%	82	29.3%	253	213	18.8%
RESIDENTIAL	75	124	-39.5%	65	15.4%	199	142	40.1%
COMMERCIAL	31	23	34.8%	17	82.4%	54	71	-23.9%
LARCENY	167	218	-23.4%	156	7.1%	385	307	25.4%
FROM AUTO	85	109	-22.0%	83	2.4%	194	161	20.5%
BICYCLE	1	1	0.0%	1		2	2	0.0%
SHOPLIFTING	12	18	-33.3%	14	-14.3%	30	26	15.4%
OTHERS	69	90	-23.3%	58	19.0%	159	118	34.7%
VEHICLE THEFT	25	18	38.9%	33	-24.2%	43	67	-35.8%
ARSON	3	5	-40.0%	3	0.0%	8	6	33.3%
TOTALS	337	421	-20.0%	299	12.7%	758	644	17.7%
VIOLENT PROPERTY	36 301	33 388	9.1% -22.4%	25 274	44.0% 9.9%	69 689	51 593	35.3% 16.2%

University Division (14)								
	<u>Current month</u>	<u>Previous Month</u>	<u>Percent Change</u>	<u>Same Month Last Year</u>	<u>Percent Change</u>	<u>Current Year-to-Date</u>	<u>Past Year-to-Date</u>	<u>Percent Change</u>
MURDER & NON-NEGLIGENT MANSLAUGHTER	0	0	NA	1	-100.0%	0	1	-100.0%
RAPE	5	1	400.0%	5	0.0%	6	6	0.0%
ROBBERY	3	11	-72.7%	15	-80.0%	14	32	-56.3%
ARMED	3	10	-70.0%	12	-75.0%	13	26	-50.0%
STRONG-ARM	0	1	-100.0%	3	-100.0%	1	6	-83.3%
AGGRAVATED ASSAULT	9	4	125.0%	6	50.0%	13	14	-7.1%
BURGLARY	49	65	-24.6%	89	-44.9%	114	178	-36.0%
RESIDENTIAL	36	49	-26.5%	60	-40.0%	85	120	-29.2%
COMMERCIAL	13	16	-18.8%	29	-55.2%	29	58	-50.0%
LARCENY	205	227	-9.7%	202	1.5%	432	417	3.6%
FROM AUTO	118	127	-7.1%	125	-5.6%	245	256	-4.3%
BICYCLE	1	0	NA	1		1	2	-50.0%
SHOPLIFTING	21	35	-40.0%	23	-8.7%	56	47	19.1%
OTHERS	65	65	0.0%	53	22.6%	130	112	16.1%
VEHICLE THEFT	21	28	-25.0%	36	-41.7%	49	78	-37.2%
ARSON	0	2	-100.0%	3	-100.0%	2	3	-33.3%
TOTALS	292	338	-13.6%	357	-18.2%	630	729	-13.6%
VIOLENT PROPERTY	17 275	16 322	6.3% -14.6%	27 330	-37.0% -16.7%	33 597	53 676	-37.7% -11.7%

Southeast Service Area Index Offenses Reported By Division, February, 2007

Hickory Grove Division (12)								
	<u>Current</u> <u>month</u>	<u>Previous</u> <u>Month</u>	<u>Percent</u> <u>Change</u>	<u>Same Month</u> <u>Last Year</u>	<u>Percent</u> <u>Change</u>	<u>Current Year-</u> <u>to-Date</u>	<u>Past Year-</u> <u>to-Date</u>	<u>Percent</u> <u>Change</u>
MURDER & NON-NEGLIGENT MANSLAUGHTER	0	0	NA	0	NA	0	0	NA
RAPE	0	1	-100.0%	1	-100.0%	1	2	-50.0%
ROBBERY	14	14	0.0%	9	55.6%	28	22	27.3%
ARMED	10	9	11.1%	7	42.9%	19	19	0.0%
STRONG-ARM	4	5	-20.0%	2	100.0%	9	3	200.0%
AGGRAVATED ASSAULT	10	10	0.0%	10	0.0%	20	32	-37.5%
BURGLARY	71	79	-10.1%	43	65.1%	150	135	11.1%
RESIDENTIAL	63	69	-8.7%	37	70.3%	132	115	14.8%
COMMERCIAL	8	10	-20.0%	6	33.3%	18	20	-10.0%
LARCENY	78	106	-26.4%	66	18.2%	184	169	8.9%
FROM AUTO	35	43	-18.6%	32	9.4%	78	77	1.3%
BICYCLE	0	2	-100.0%	0		2	2	0.0%
SHOPLIFTING	9	6	50.0%	5	80.0%	15	20	-25.0%
OTHERS	34	55	-38.2%	29	17.2%	89	70	27.1%
VEHICLE THEFT	28	34	-17.6%	42	-33.3%	62	74	-16.2%
ARSON	3	0	NA	4	-25.0%	3	6	-50.0%
TOTALS	204	244	-16.4%	175	16.6%	448	440	1.8%
VIOLENT PROPERTY	24 180	25 219	-4.0% -17.8%	20 155	20.0% 16.1%	49 399	56 384	-12.5% 3.9%

Independence Division (17)								
	<u>Current</u> <u>month</u>	<u>Previous</u> <u>Month</u>	<u>Percent</u> <u>Change</u>	<u>Same Month</u> <u>Last Year</u>	<u>Percent</u> <u>Change</u>	<u>Current Year-</u> <u>to-Date</u>	<u>Past Year-</u> <u>to-Date</u>	<u>Percent</u> <u>Change</u>
MURDER & NON-NEGLIGENT MANSLAUGHTER	1	0	NA	0	NA	1	0	NA
RAPE	1	2	-50.0%	2	-50.0%	3	4	-25.0%
ROBBERY	4	19	-78.9%	11	-63.6%	23	33	-30.3%
ARMED	2	15	-86.7%	8	-75.0%	17	25	-32.0%
STRONG-ARM	2	4	-50.0%	3	-33.3%	6	8	-25.0%
AGGRAVATED ASSAULT	11	18	-38.9%	15	-26.7%	29	27	7.4%
BURGLARY	50	62	-19.4%	57	-12.3%	112	142	-21.1%
RESIDENTIAL	40	49	-18.4%	44	-9.1%	89	110	-19.1%
COMMERCIAL	10	13	-23.1%	13	-23.1%	23	32	-28.1%
LARCENY	107	161	-33.5%	104	2.9%	268	243	10.3%
FROM AUTO	50	84	-40.5%	51	-2.0%	134	119	12.6%
BICYCLE	1	1	0.0%	3		2	4	-50.0%
SHOPLIFTING	11	17	-35.3%	13	-15.4%	28	34	-17.6%
OTHERS	45	59	-23.7%	37	21.6%	104	86	20.9%
VEHICLE THEFT	34	43	-20.9%	34	0.0%	77	80	-3.8%
ARSON	2	0	NA	1	100.0%	2	3	-33.3%
TOTALS	210	305	-31.1%	224	-6.3%	515	532	-3.2%
VIOLENT PROPERTY	17 193	39 266	-56.4% -27.4%	28 196	-39.3% -1.5%	56 459	64 468	-12.5% -1.9%

South Service Area: Index Offenses Reported By Division, February, 2007

Providence Division (16)								
	<u>Current month</u>	<u>Previous Month</u>	<u>Percent Change</u>	<u>Same Month Last Year</u>	<u>Percent Change</u>	<u>Current Year-to-Date</u>	<u>Past Year-to-Date</u>	<u>Percent Change</u>
MURDER & NON-NEGLIGENT MANSLAUGHTER	2	0	NA	0	NA	2	1	100.0%
RAPE	0	0	NA	3	-100.0%	0	4	-100.0%
ROBBERY	4	11	-63.6%	4	0.0%	15	8	87.5%
ARMED	3	6	-50.0%	2	50.0%	9	4	125.0%
STRONG-ARM	1	5	-80.0%	2	-50.0%	6	4	50.0%
AGGRAVATED ASSAULT	12	14	-14.3%	9	33.3%	26	18	44.4%
BURGLARY	39	85	-54.1%	49	-20.4%	124	152	-18.4%
RESIDENTIAL	35	61	-42.6%	30	16.7%	96	80	20.0%
COMMERCIAL	4	24	-83.3%	19	-78.9%	28	72	-61.1%
LARCENY	188	272	-30.9%	166	13.3%	460	322	42.9%
FROM AUTO	110	169	-34.9%	78	41.0%	279	150	86.0%
BICYCLE	1	1	0.0%	1		2	1	100.0%
SHOPLIFTING	20	19	5.3%	29	-31.0%	39	61	-36.1%
OTHERS	57	83	-31.3%	58	-1.7%	140	110	27.3%
VEHICLE THEFT	23	24	-4.2%	30	-23.3%	47	65	-27.7%
ARSON	0	0	NA	3	-100.0%	0	5	-100.0%
TOTALS	268	406	-34.0%	264	1.5%	674	575	17.2%
VIOLENT PROPERTY	18	25	-28.0%	16	12.5%	43	31	38.7%
PROPERTY	250	381	-34.4%	248	0.8%	631	544	16.0%

South Division (22)								
	<u>Current month</u>	<u>Previous Month</u>	<u>Percent Change</u>	<u>Same Month Last Year</u>	<u>Percent Change</u>	<u>Current Year-to-Date</u>	<u>Past Year-to-Date</u>	<u>Percent Change</u>
MURDER & NON-NEGLIGENT MANSLAUGHTER	0	0	NA	0	NA	0	3	-100.0%
RAPE	0	1	-100.0%	2	-100.0%	1	4	-75.0%
ROBBERY	4	6	-33.3%	3	33.3%	10	5	100.0%
ARMED	1	5	-80.0%	3	-66.7%	6	5	20.0%
STRONG-ARM	3	1	200.0%	0	NA	4	0	NA
AGGRAVATED ASSAULT	1	6	-83.3%	5	-80.0%	7	22	-68.2%
BURGLARY	24	41	-41.5%	41	-41.5%	65	86	-24.4%
RESIDENTIAL	20	33	-39.4%	28	-28.6%	53	61	-13.1%
COMMERCIAL	4	8	-50.0%	13	-69.2%	12	25	-52.0%
LARCENY	112	145	-22.8%	123	-8.9%	257	270	-4.8%
FROM AUTO	44	63	-30.2%	73	-39.7%	107	158	-32.3%
BICYCLE	0	1	-100.0%	0		1	0	NA
SHOPLIFTING	13	14	-7.1%	7	85.7%	27	15	80.0%
OTHERS	55	67	-17.9%	43	27.9%	122	97	25.8%
VEHICLE THEFT	11	20	-45.0%	8	37.5%	31	38	-18.4%
ARSON	0	1	-100.0%	8	-100.0%	1	8	-87.5%
TOTALS	152	220	-30.9%	190	-20.0%	372	436	-14.7%
VIOLENT PROPERTY	5	13	-61.5%	10	-50.0%	18	34	-47.1%
PROPERTY	147	207	-29.0%	180	-18.3%	354	402	-11.9%

Southwest Service Area: Index Offenses Reported By Division, February, 2007

Westover Division (26)								
	<u>Current month</u>	<u>Previous Month</u>	<u>Percent Change</u>	<u>Same Month Last Year</u>	<u>Percent Change</u>	<u>Current Year-to-Date</u>	<u>Past Year-to-Date</u>	<u>Percent Change</u>
MURDER & NON-NEGLIGENT MANSLAUGHTER	0	1	-100.0%	0	NA	1	1	0.0%
RAPE	2	2	0.0%	1	100.0%	4	3	33.3%
ROBBERY	15	25	-40.0%	16	-6.3%	40	46	-13.0%
ARMED	11	16	-31.3%	16	-31.3%	27	43	-37.2%
STRONG-ARM	4	9	-55.6%	0	NA	13	3	333.3%
AGGRAVATED ASSAULT	29	51	-43.1%	51	-43.1%	80	107	-25.2%
BURGLARY	64	117	-45.3%	71	-9.9%	181	182	-0.5%
RESIDENTIAL	31	52	-40.4%	47	-34.0%	83	110	-24.5%
COMMERCIAL	33	65	-49.2%	24	37.5%	98	72	36.1%
LARCENY	176	215	-18.1%	170	3.5%	391	334	17.1%
FROM AUTO	99	120	-17.5%	91	8.8%	219	173	26.6%
BICYCLE	1	1	0.0%	0		2	1	100.0%
SHOPLIFTING	10	30	-66.7%	17	-41.2%	40	45	-11.1%
OTHERS	66	64	3.1%	62	6.5%	130	115	13.0%
VEHICLE THEFT	26	37	-29.7%	38	-31.6%	63	116	-45.7%
ARSON	3	4	-25.0%	1	200.0%	7	5	40.0%
TOTALS	315	452	-30.3%	348	-9.5%	767	794	-3.4%
VIOLENT PROPERTY	46 269	79 373	-41.8% -27.9%	68 280	-32.4% -3.9%	125 642	157 637	-20.4% 0.8%

Steele Creek Division (21)								
	<u>Current month</u>	<u>Previous Month</u>	<u>Percent Change</u>	<u>Same Month Last Year</u>	<u>Percent Change</u>	<u>Current Year-to-Date</u>	<u>Past Year-to-Date</u>	<u>Percent Change</u>
MURDER & NON-NEGLIGENT MANSLAUGHTER	0	0	NA	1	-100.0%	0	1	-100.0%
RAPE	5	2	150.0%	2	150.0%	7	5	40.0%
ROBBERY	18	13	38.5%	11	63.6%	31	39	-20.5%
ARMED	14	11	27.3%	10	40.0%	25	33	-24.2%
STRONG-ARM	4	2	100.0%	1	300.0%	6	6	0.0%
AGGRAVATED ASSAULT	20	26	-23.1%	28	-28.6%	46	66	-30.3%
BURGLARY	48	101	-52.5%	66	-27.3%	149	166	-10.2%
RESIDENTIAL	40	58	-31.0%	42	-4.8%	98	123	-20.3%
COMMERCIAL	8	43	-81.4%	24	-66.7%	51	43	18.6%
LARCENY	205	251	-18.3%	182	12.6%	456	376	21.3%
FROM AUTO	113	139	-18.7%	94	20.2%	252	208	21.2%
BICYCLE	2	1	100.0%	0		3	0	NA
SHOPLIFTING	18	22	-18.2%	17	5.9%	40	27	48.1%
OTHERS	72	89	-19.1%	71	1.4%	161	141	14.2%
VEHICLE THEFT	40	42	-4.8%	46	-13.0%	82	84	-2.4%
ARSON	1	2	-50.0%	2	-50.0%	3	6	-50.0%
TOTALS	337	437	-22.9%	338	-0.3%	774	743	4.2%
VIOLENT PROPERTY	43 294	41 396	4.9% -25.8%	42 296	2.4% -0.7%	84 690	111 632	-24.3% 9.2%

West Service Area: Index Offenses Reported By Division, February, 2007

Metro Division (02)								
	<u>Current month</u>	<u>Previous Month</u>	<u>Percent Change</u>	<u>Same Month Last Year</u>	<u>Percent Change</u>	<u>Current Year-to-Date</u>	<u>Past Year-to-Date</u>	<u>Percent Change</u>
MURDER & NON-NEGLIGENT MANSLAUGHTER	0	3	-100.0%	1	-100.0%	3	1	200.0%
RAPE	1	2	-50.0%	1	0.0%	3	3	0.0%
ROBBERY	19	29	-34.5%	20	-5.0%	48	54	-11.1%
ARMED	13	23	-43.5%	13	0.0%	36	42	-14.3%
STRONG-ARM	6	6	0.0%	7	-14.3%	12	12	0.0%
AGGRAVATED ASSAULT	34	41	-17.1%	31	9.7%	75	72	4.2%
BURGLARY	67	85	-21.2%	54	24.1%	152	169	-10.1%
RESIDENTIAL	40	50	-20.0%	33	21.2%	90	92	-2.2%
COMMERCIAL	27	35	-22.9%	21	28.6%	62	77	-19.5%
LARCENY	128	124	3.2%	151	-15.2%	252	312	-19.2%
FROM AUTO	57	55	3.6%	66	-13.6%	112	146	-23.3%
BICYCLE	0	0	NA	0		0	1	-100.0%
SHOPLIFTING	12	9	33.3%	13	-7.7%	21	21	0.0%
OTHERS	59	60	-1.7%	72	-18.1%	119	144	-17.4%
VEHICLE THEFT	39	32	21.9%	44	-11.4%	71	96	-26.0%
ARSON	2	2	0.0%	1	100.0%	4	3	33.3%
TOTALS	290	318	-8.8%	303	-4.3%	608	710	-14.4%
VIOLENT PROPERTY	54	75	-28.0%	53	1.9%	129	130	-0.8%
	236	243	-2.9%	250	-5.6%	479	580	-17.4%

Freedom Division (27)								
	<u>Current month</u>	<u>Previous Month</u>	<u>Percent Change</u>	<u>Same Month Last Year</u>	<u>Percent Change</u>	<u>Current Year-to-Date</u>	<u>Past Year-to-Date</u>	<u>Percent Change</u>
MURDER & NON-NEGLIGENT MANSLAUGHTER	0	2	-100.0%	0	NA	2	0	NA
RAPE	4	2	100.0%	2	100.0%	6	3	100.0%
ROBBERY	14	24	-41.7%	17	-17.6%	38	31	22.6%
ARMED	14	22	-36.4%	17	-17.6%	36	28	28.6%
STRONG-ARM	0	2	-100.0%	0	NA	2	3	-33.3%
AGGRAVATED ASSAULT	11	32	-65.6%	26	-57.7%	43	41	4.9%
BURGLARY	102	99	3.0%	63	61.9%	201	185	8.6%
RESIDENTIAL	54	66	-18.2%	33	63.6%	120	101	18.8%
COMMERCIAL	48	33	45.5%	30	60.0%	81	84	-3.6%
LARCENY	151	253	-40.3%	147	2.7%	404	344	17.4%
FROM AUTO	82	149	-45.0%	72	13.9%	231	175	32.0%
BICYCLE	0	0	NA	0		0	0	NA
SHOPLIFTING	10	13	-23.1%	14	-28.6%	23	41	-43.9%
OTHERS	59	91	-35.2%	61	-3.3%	150	128	17.2%
VEHICLE THEFT	26	53	-50.9%	35	-25.7%	79	87	-9.2%
ARSON	2	3	-33.3%	5	-60.0%	5	8	-37.5%
TOTALS	310	468	-33.8%	295	5.1%	778	699	11.3%
VIOLENT PROPERTY	29	60	-51.7%	45	-35.6%	89	75	18.7%
	281	408	-31.1%	250	12.4%	689	624	10.4%

Central Service Area: Index Offenses Reported By Division, February, 2007

Central Division (01)								
	<u>Current</u> <u>month</u>	<u>Previous</u> <u>Month</u>	<u>Percent</u> <u>Change</u>	<u>Same Month</u> <u>Last Year</u>	<u>Percent</u> <u>Change</u>	<u>Current Year-</u> <u>to-Date</u>	<u>Past Year-</u> <u>to-Date</u>	<u>Percent</u> <u>Change</u>
MURDER & NON-NEGLIGENT MANSLAUGHTER	0	1	-100.0%	1	-100.0%	1	1	0.0%
RAPE	2	0	NA	-1	-300.0%	2	2	0.0%
ROBBERY	9	7	28.6%	12	-25.0%	16	17	-5.9%
ARMED	4	4	0.0%	8	-50.0%	8	11	-27.3%
STRONG-ARM	5	3	66.7%	4	25.0%	8	6	33.3%
AGGRAVATED ASSAULT	8	13	-38.5%	4	100.0%	21	11	90.9%
BURGLARY	12	23	-47.8%	19	-36.8%	35	52	-32.7%
RESIDENTIAL	4	12	-66.7%	8	-50.0%	16	22	-27.3%
COMMERCIAL	8	11	-27.3%	11	-27.3%	19	30	-36.7%
LARCENY	145	190	-23.7%	111	30.6%	335	265	26.4%
FROM AUTO	55	114	-51.8%	47	17.0%	169	124	36.3%
BICYCLE	1	1	0.0%	0		2	0	NA
SHOPLIFTING	11	13	-15.4%	2	450.0%	24	10	140.0%
OTHERS	78	62	25.8%	62	25.8%	140	131	6.9%
VEHICLE THEFT	13	15	-13.3%	28	-53.6%	28	52	-46.2%
ARSON	0	1	-100.0%	0	NA	1	2	-50.0%
TOTALS	189	250	-24.4%	174	8.6%	439	402	9.2%
VIOLENT PROPERTY	19	21	-9.5%	16	18.8%	40	31	29.0%
	170	229	-25.8%	158	7.6%	399	371	7.5%

Year-to-Date Index Crimes by Service Area: February, 2007

Index Offenses	South Service Area Totals			Southwest Service Area Totals			West Service Area Totals		
	Current Year- to-Date	Past Year- to-Date	Percent Change	Current Year- to-Date	Past Year- to-Date	Percent Change	Current Year- to-Date	Past Year- to-Date	Percent Change
MURDER & NON-NEGLIGENT MANSLAUGHTER	2	4	-50.0%	1	2	-50.0%	5	1	400.0%
RAPE	1	8	-87.5%	11	8	37.5%	9	6	50.0%
ROBBERY	25	13	92.3%	71	85	-16.5%	86	85	1.2%
ARMED	15	9	66.7%	52	76	-31.6%	72	70	2.9%
STRONG-ARM	10	4	150.0%	19	9	111.1%	14	15	-6.7%
AGGRAVATED ASSAULT	33	40	-17.5%	126	173	-27.2%	118	113	4.4%
BURGLARY	189	238	-20.6%	330	348	-5.2%	353	354	-0.3%
RESIDENTIAL	149	141	5.7%	181	233	-22.3%	210	193	8.8%
COMMERCIAL	40	97	-58.8%	149	115	29.6%	143	161	-11.2%
LARCENY	717	592	21.1%	847	710	19.3%	656	656	0.0%
FROM AUTO	386	308	25.3%	471	381	23.6%	343	321	6.9%
BICYCLE	3	1	200.0%	5	1	400.0%	0	1	-100.0%
SHOPLIFTING	66	76	-13.2%	80	72	11.1%	44	62	-29.0%
OTHERS	262	207	26.6%	291	256	13.7%	269	272	-1.1%
VEHICLE THEFT	78	103	-24.3%	145	200	-27.5%	150	183	-18.0%
ARSON	1	13	-92.3%	10	11	-9.1%	9	11	-18.2%
TOTALS	1046	1011	3.5%	1541	1537	0.3%	1386	1409	-1.6%
VIOLENT PROPERTY	61 985	65 946	-6.2% 4.1%	209 1332	268 1269	-22.0% 5.0%	218 1168	205 1204	6.3% -3.0%

Year-to-Date Index Crimes by Service Area: February, 2007

Index Offenses	East Service Area Totals			North Service Area Totals			Southeast Service Area Totals		
	Current Year- to-Date	Past Year- to-Date	Percent Change	Current Year- to-Date	Past Year- to-Date	Percent Change	Current Year- to-Date	Past Year- to-Date	Percent Change
MURDER & NON-NEGLIGENT MANSLAUGHTER	3	2	50.0%	0	1	-100.0%	1	0	NA
RAPE	5	9	-44.4%	14	8	75.0%	4	6	-33.3%
ROBBERY	95	91	4.4%	33	44	-25.0%	51	55	-7.3%
ARMED	80	76	5.3%	29	38	-23.7%	36	44	-18.2%
STRONG-ARM	15	15	0.0%	4	6	-33.3%	15	11	36.4%
AGGRAVATED ASSAULT	90	95	-5.3%	55	51	7.8%	49	59	-16.9%
BURGLARY	273	356	-23.3%	367	391	-6.1%	262	277	-5.4%
RESIDENTIAL	206	237	-13.1%	284	262	8.4%	221	225	-1.8%
COMMERCIAL	67	119	-43.7%	83	129	-35.7%	41	52	-21.2%
LARCENY	516	541	-4.6%	817	724	12.8%	452	412	9.7%
FROM AUTO	260	270	-3.7%	439	417	5.3%	212	196	8.2%
BICYCLE	1	3	-66.7%	3	4	-25.0%	4	6	-33.3%
SHOPLIFTING	56	69	-18.8%	86	73	17.8%	43	54	-20.4%
OTHERS	199	199	0.0%	289	230	25.7%	193	156	23.7%
VEHICLE THEFT	164	205	-20.0%	92	145	-36.6%	139	154	-9.7%
ARSON	6	10	-40.0%	10	9	11.1%	5	9	-44.4%
TOTALS	1152	1309	-12.0%	1388	1373	1.1%	963	972	-0.9%
VIOLENT PROPERTY	193 959	197 1112	-2.0% -13.8%	102 1286	104 1269	-1.9% 1.3%	105 858	120 852	-12.5% 0.7%

Year-to-Date Index Crimes by Service Area:**February, 2007**

Index Offenses	Central Service Area Totals		
	Current Year- to-Date	Past Year- to-Date	Percent Change
MURDER & NON-NEGLIGENT MANSLAUGHTER	1	1	0.0%
RAPE	2	2	0.0%
ROBBERY	16	17	-5.9%
ARMED	8	11	-27.3%
STRONG-ARM	8	6	33.3%
AGGRAVATED ASSAULT	21	11	90.9%
BURGLARY	35	52	-32.7%
RESIDENTIAL	16	22	-27.3%
COMMERCIAL	19	30	-36.7%
LARCENY	335	265	26.4%
FROM AUTO	169	124	36.3%
BICYCLE	2	0	NA
SHOPLIFTING	24	10	140.0%
OTHERS	140	131	6.9%
VEHICLE THEFT	28	52	-46.2%
ARSON	1	2	-50.0%
TOTALS	439	402	9.2%
VIOLENT PROPERTY	40 399	31 371	29.0% 7.5%

Arrests by Charlotte-Mecklenburg Police Department
Year-To-Date: 2006-2007
(Through February)

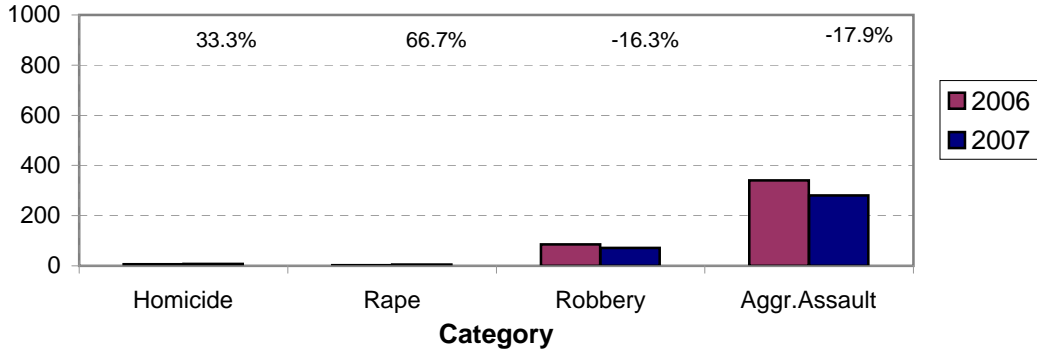
CATEGORY	ADULTS (AGE 18 & OLDER):			JUVENILES (UNDER 18):			TOTAL ARRESTS:		
	2006 Y-T-D	2007 Y-T-D	% CHANGE	2006 Y-T-D	2007 Y-T-D	% CHANGE	2006 Y-T-D	2007 Y-T-D	% CHANGE
Murder/Non-Negligent Manslaughter	6	8	33.3%	0	0	NA	6	8	33.3%
Negligent & Vehicular Manslaughter	1	0	-100.0%	0	0	NA	1	0	-100.0%
Rape	2	4	100.0%	1	1	0.0%	3	5	66.7%
Robbery	58	48	-17.2%	28	24	-14.3%	86	72	-16.3%
Aggravated Assault	287	223	-22.3%	54	57	5.6%	341	280	-17.9%
Burglary	113	108	-4.4%	36	52	44.4%	149	160	7.4%
Larceny	224	222	-0.9%	79	87	10.1%	303	309	2.0%
Vehicle Theft	12	6	-50.0%	16	16	0.0%	28	22	-21.4%
Non-Aggravated Assault	316	292	-7.6%	117	86	-26.5%	433	378	-12.7%
Arson	3	4	33.3%	7	1	-85.7%	10	5	-50.0%
Forgery/Counterfeit	27	19	-29.6%	0	0	NA	27	19	-29.6%
Fraud	108	83	-23.1%	1	2	100.0%	109	85	-22.0%
Embezzlement	15	16	6.7%	1	3	200.0%	16	19	18.8%
Stolen Property	101	85	-15.8%	30	29	-3.3%	131	114	-13.0%
Vandalism	43	37	-14.0%	45	31	-31.1%	88	68	-22.7%
Weapons	136	139	2.2%	14	14	0.0%	150	153	2.0%
Prostitution	43	8	-81.4%	0	0	NA	43	8	-81.4%
Sex Offenses	22	25	13.6%	1	1	0.0%	23	26	13.0%
Drugs	546	535	-2.0%	74	86	16.2%	620	621	0.2%
Gambling	1	0	-100.0%	0	0	NA	1	0	-100.0%
Offenses vs. Family	1	0	-100.0%	0	0	NA	1	0	-100.0%
DUI	323	326	0.9%	5	2	-60.0%	328	328	0.0%
Liquor	31	34	9.7%	0	6	NA	31	40	29.0%
Disorder.Conduct	94	84	-10.6%	56	44	-21.4%	150	128	-14.7%
Other Non-Traffic	1483	1231	-17.0%	155	134	-13.5%	1638	1365	-16.7%
VIOLENT INDEX¹	353	283	-19.8%	83	82	-1.2%	436	365	-16.3%
PROPERTY INDEX²	352	340	-3.4%	138	156	13.0%	490	496	1.2%
INDEX SUBTOTAL	705	623	-11.6%	221	238	7.7%	926	861	-7.0%
PART 2 SUBTOTAL³	3291	2914	-11.5%	499	438	-12.2%	3790	3352	-11.6%
TOTAL	3996	3537	-11.5%	720	676	-6.1%	4716	4213	-10.7%

¹Violent Index includes murder and non-negligent manslaughter, rape, robbery, and aggravated assault.

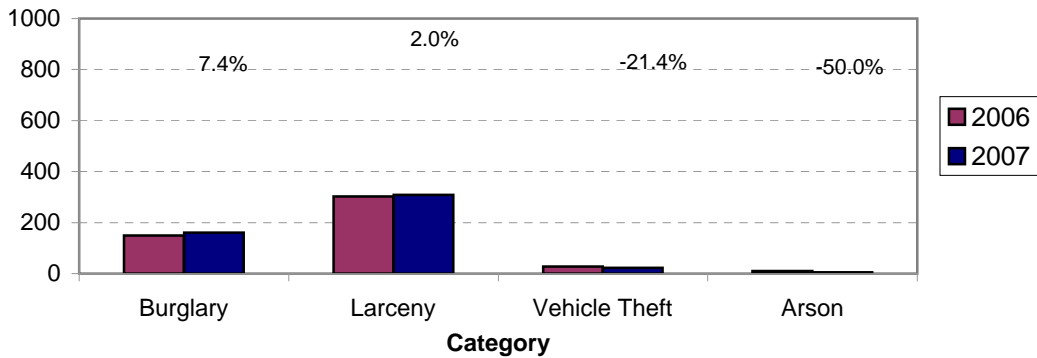
²Property Index includes burglary, larceny, vehicle theft, and arson.

³Part 2 crimes include crime categories not counted in the Index totals.

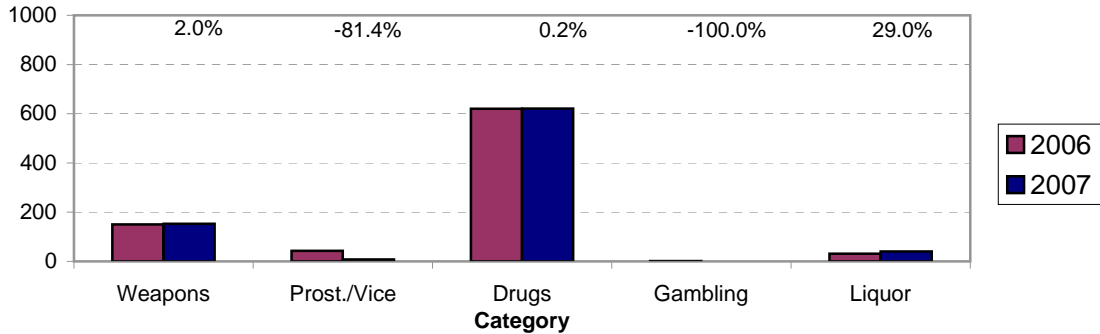
**Violent Index Arrests Year-to-Date
Charlotte-Mecklenburg Police Department: 2006-2007
(Through February)**



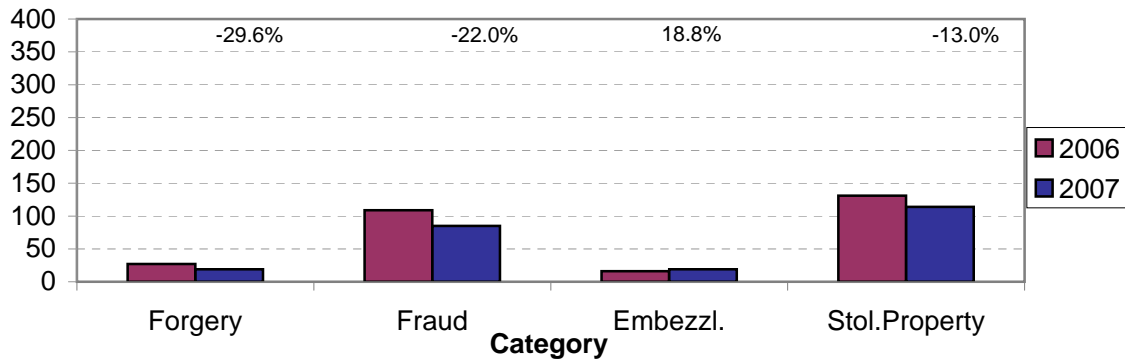
**Property Index Arrests Year-to-Date
Charlotte-Mecklenburg Police Department: 2006-2007
(Through February)**



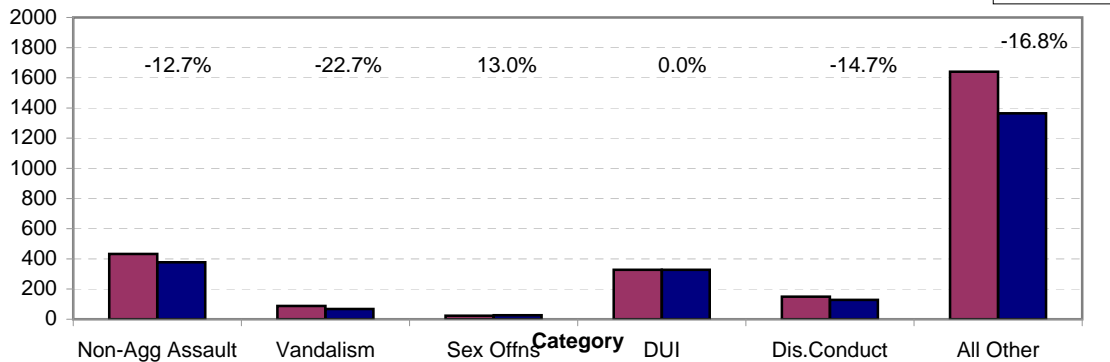
**Arrests for Vice/CCW/Drugs/Etc. Year-to-Date
Charlotte-Mecklenburg Police Department: 2006- 2007
(Through February)**



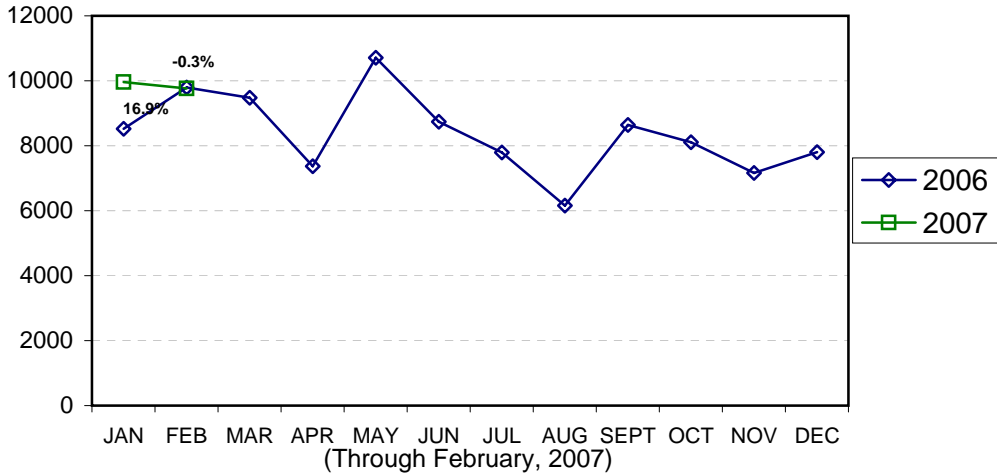
**Arrests for Property/White Collar Crime Year-to-Date
Charlotte-Mecklenburg Police Department: 2006- 2007
(Through February)**



**Arrests for Other Categories Year-to-Date
Charlotte-Mecklenburg Police Department: 2006 - 2007
(Through February)**

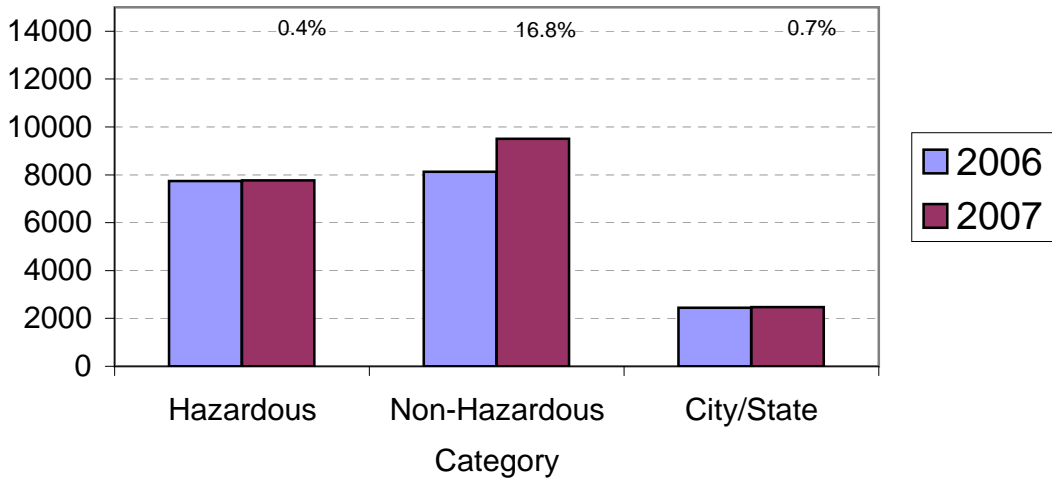


**Total Citation Enforcement by Month
Charlotte-Mecklenburg Police Dept.: 2006-2007**



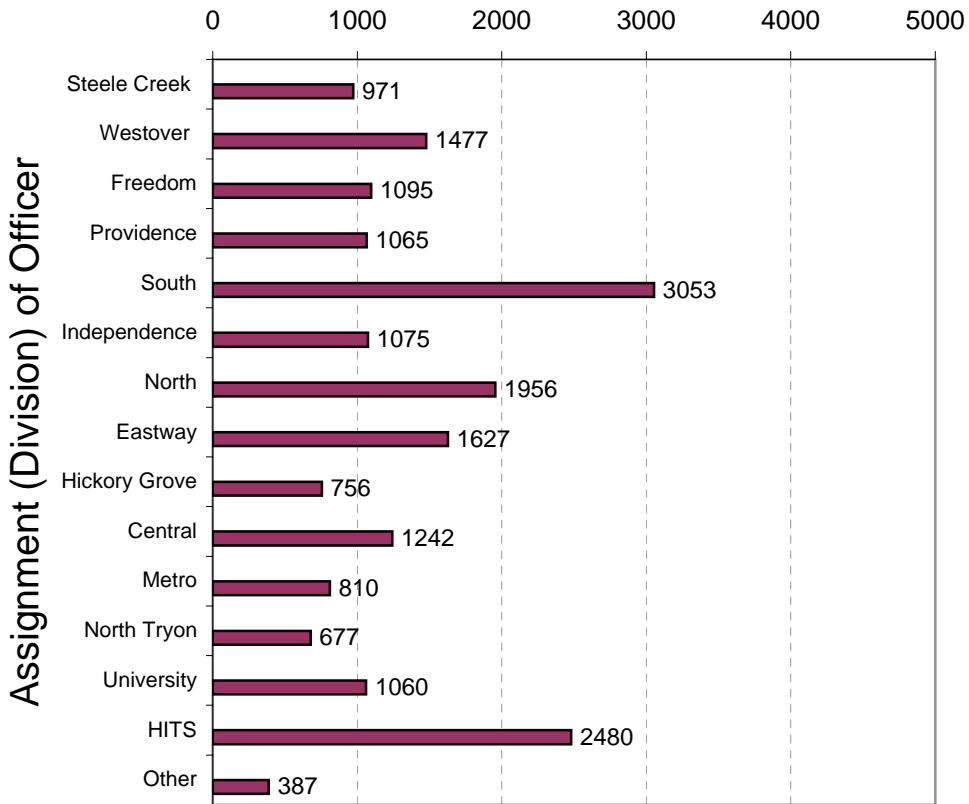
(Includes Hazardous, Non-Hazardous, and City/State Citations; percentages are current month compared to same month in previous year. Percentages are the change from current month to same month in past year. Monthly totals may be affected by data entry delays.)

**CMPD Citation Enforcement by Category
Year-to-Date, 2006 - 2007
(Through February, 2007)**



**Citations Issued Year-to-Date by CMPD Divisions
2007**

(Through February, 2007)

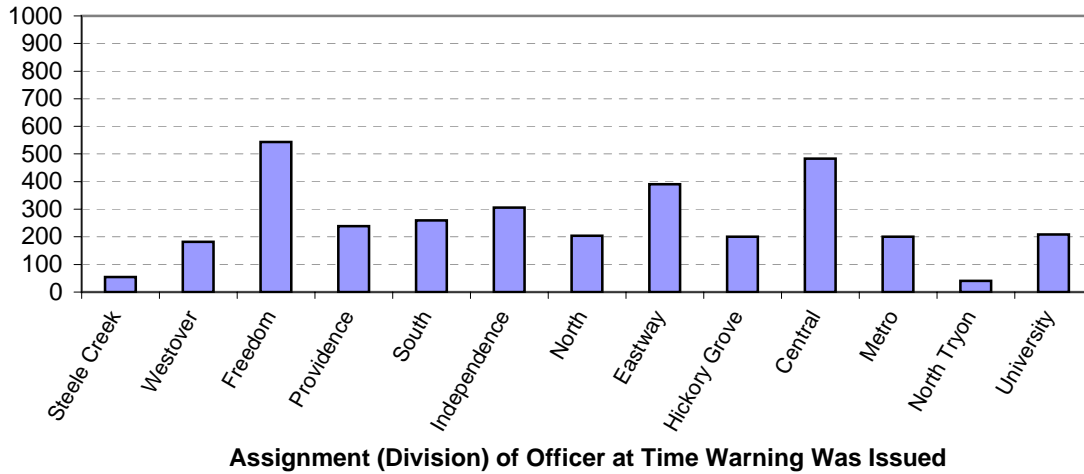


Officers' division assignments for Jan 1-12 were based on the previous 12 division configuration; assignments after re-districting on Jan 13 are based on the 13 division configuration.

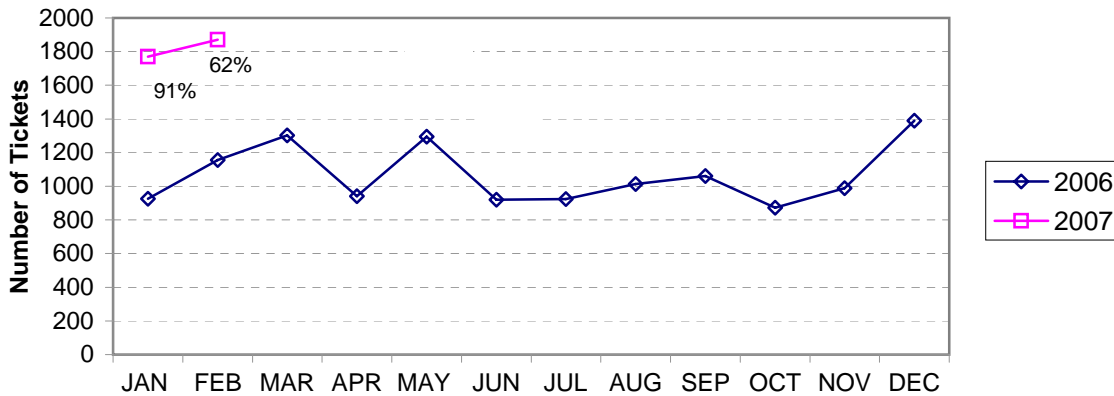
**Citations Reported by the Charlotte Mecklenburg Police Year-to-Date
(Through February, 2007)**

	2006	2007	% Change
Hazardous	7,734	7,764	0.4%
Non-Hazardous	8,135	9,499	16.8%
Other City/State Statute/Ordinance	2,450	2,468	0.7%
Total	18,319	19,731	7.7%

**Warning Ticket Violations Issued by Division
Charlotte-Mecklenburg Police Department, 2007
Through February, 2007**



**Total Warning Ticket Violations Issued by Month
Charlotte-Mecklenburg Police Department: 2006 - 2007**



**Warning Tickets Issued Year-to-Date
Charlotte-Mecklenburg Police Department
Through February, 2007**

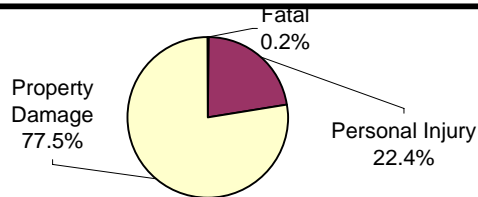
	2006	2007	% Change
Total Warning Tickets	2080	3641	75.0%

**Traffic Collision Reports Recorded by
Charlotte-Mecklenburg Police Department
Year-to-Date: 2006-2007
(Through February)**

<u>Type</u>	<u>2006</u>	<u>2007</u>	<u>% Change</u>
Fatal Collisions	12	7	-41.7%
Vehicle Occupants Killed	11	5	-54.5%
Pedestrians Killed	2	3	50.0%
Personal Injury Collisions	959	952	-0.7%
Property Damage Collisions	3364	3295	-2.1%
Total Collisions	4335	4254	-1.9%

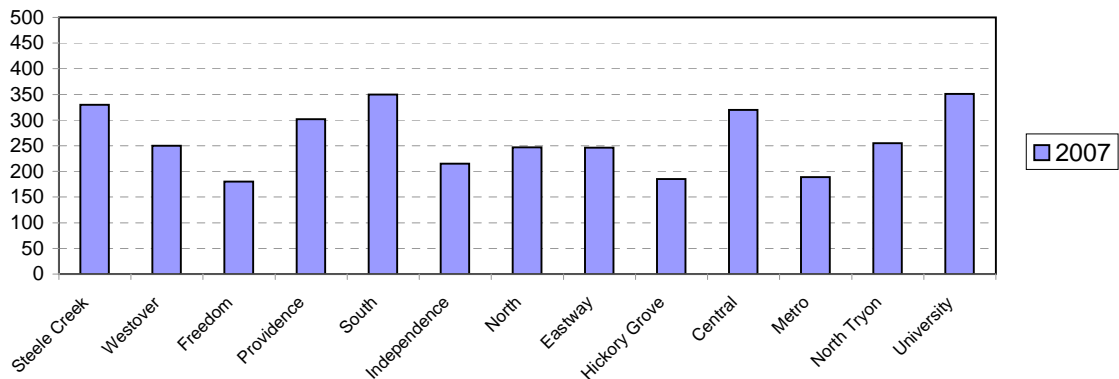
* The number of fatal collisions and the number of persons killed in those incidents is taken from the files of the CMPD Highway Interdiction Traffic Safety (HITS) unit. Their records are updated for deaths that occur after the initial report is filed.
All other numbers are based on the data entered by CMPD's Records Division from the initial DMV-349 reports forwarded to them by CMPD officers.

**Traffic Collision Reports by Type
Charlotte-Mecklenburg Police Department:
2007 Year-to-Date
(Through February)**



**Traffic Collision Reports - Charlotte-Mecklenburg Police Dept.
Year-to-Date By Location (Division) : 2007**

(Includes collision reports from January 13-February 28 only)



**CITIZEN-INITIATED CALLS FOR SERVICE¹ BY TYPE
CHARLOTTE-MECKLENBURG POLICE DEPARTMENT**

<u>Type of Call²</u>	<u>2006 Year-to-Date⁵ Through February</u>	<u>2007 Year-to-Date⁵ Through February</u>	<u>Year-to-Date % Change</u>
ABC RELATED	295	254	-13.9%
ACCIDENT	5516	5874	6.5%
ALARM	5151	5593	8.6%
ANIMAL CONTROL ³	32	47	46.9%
ASSAULT	621	630	1.4%
ASSAULT WITH DEADLY WEAPON	241	297	23.2%
ASSIST OTHER AGENCY	1282	1247	-2.7%
BOMB THREAT	23	8	-65.2%
BREAK/ENTER	3225	2995	-7.1%
CDCP CLINICIAN VISIT ⁴	144	236	63.9%
COMMUNICATING THREATS	520	524	0.8%
COUNTY SECURITY ³	3	0	-100.0%
CRIMINAL INTELLIGENCE	3	4	33.3%
CRITICAL INCIDENT ⁴	4	2	-50.0%
DAMAGE TO PROPERTY	1333	1256	-5.8%
DEATH	51	43	-15.7%
DISTURBANCE	3749	3870	3.2%
DOMESTIC INCIDENT	5567	5152	-7.5%
DRUG RELATED	572	606	5.9%
EXTORTION/BLACKMAIL ⁴	0	4	NA
FIGHT	512	380	-25.8%
FIRE CASE	17	14	-17.6%
FRAUD/FORGERY	550	640	16.4%
GAMBLING	5	4	-20.0%
HARASSMENT	277	339	22.4%
HIT AND RUN	1154	1284	11.3%
JUVENILE RELATED	434	372	-14.3%
KIDNAPPING	35	40	14.3%
LAKE ENFORCEMENT	3	5	66.7%
LARCENY	4389	4730	7.8%
LOITERING	741	769	3.8%
MISSING PERSON	1127	1103	-2.1%
NOISE COMPLAINT	1939	1991	2.7%
OFFENSE AGAINST FAMILY	2	1	-50.0%
OFFICER CALLED IN	90	7	-92.2%
OVERDOSE	49	65	32.7%
PORNOGRAPHY	3	6	100.0%
PROPERTY	1088	1267	16.5%
PROSTITUTION	122	118	-3.3%
PUBLIC SERVICE	3714	2281	-38.6%
QUALITY OF LIFE	402	82	-79.6%
ROBBERY	456	428	-6.1%
SEX CRIME	174	146	-16.1%
SPECIAL SERVICE REQUEST ⁴	0	111	NA
SUICIDE	208	218	4.8%
SUSPICIOUS PERSON	3078	2951	-4.1%
TRAFFIC RELATED	1693	1585	-6.4%
TRESPASS	546	630	15.4%
VEHICLE RELATED	5540	5468	-1.3%
VIOLENT CRIMES TASK FORCE ⁴	1	224	NA
WARRANT RELATED	502	464	-7.6%
WEAPON RELATED	1210	1321	9.2%
911 HANG UP / CALLBACK	2052	1799	-12.3%
			NA
TOTAL	60445	59485	-1.6%

¹These totals exclude duplicate and cancelled calls for service; they include calls handled by the Crime Reporting Unit as well as by division field officers, detectives and related CMPD staff.

²The type of call is determined from the 911 call, unless updated by an officer assigned to respond.

³In this summary, calls to Animal Control, Mecklenburg County Security, or Davidson Police are not included unless they also involve the dispatching of C-MPD field officers or detectives.

⁴This call type may not have been in use during part or all of the previous year or current year.

⁵Call totals may not match previously published totals due to adjustments for changes in call codes and procedures.

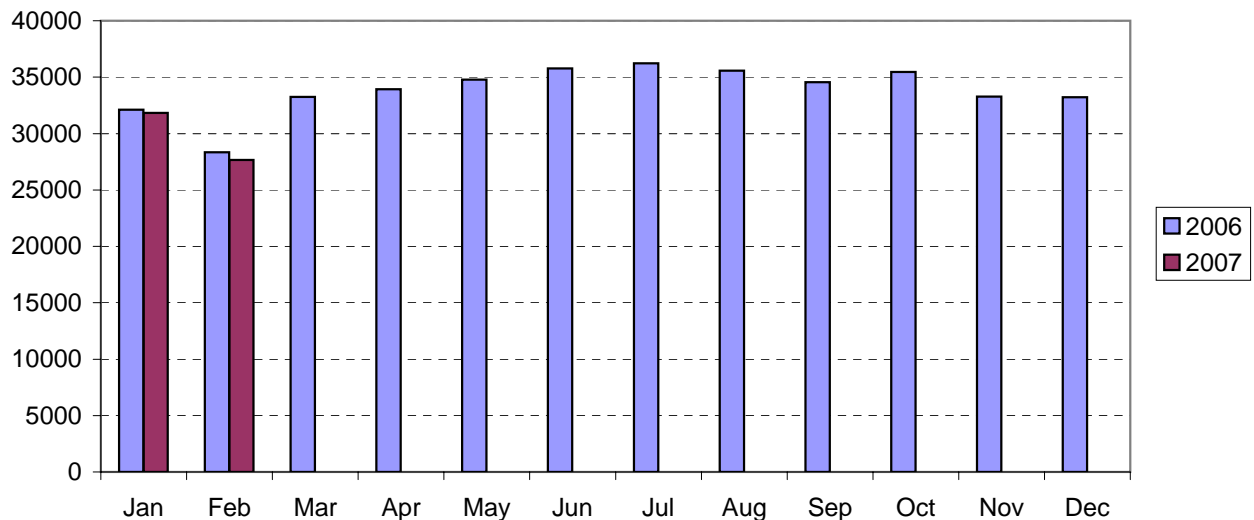
CITIZEN-INITIATED CALLS FOR SERVICE BY ORIGINATING CMPD DIVISION^{1,2}
 (Based on District of Call Origination, Not on Assigned District of Responding Units)

<u>District</u>	<u>2006 Year-to-Date Through February</u>	<u>2007 Year-to-Date Through February</u>	<u>Year-to-Date % Change</u>
Central-01	3455	3482	0.8%
Metro-02	5640	5249	-6.9%
Eastway-06	5020	4443	-11.5%
North Tryon-07	4458	4249	-4.7%
North-11 (C1)	4392	4801	9.3%
Hickory Grove-12	3696	3698	0.1%
University-14	4842	4733	-2.3%
Providence-16	4713	4625	-1.9%
Independence-17	4109	4222	2.8%
Steele Creek-21	4798	4790	-0.2%
South-22	4238	4021	-5.1%
Westover-26	5110	4900	-4.1%
Freedom-27	4673	4481	-4.1%
Total²	59144	57694	-2.5%

¹These totals exclude duplicate and cancelled calls for service; they include calls handled by the Crime Reporting Unit as well as by division field officers, detectives and other CMPD staff.

²Calls where the location could not be assigned to one of the divisions are not included in this chart.

Citizen-Initiated Calls for Service¹ by Month
Charlotte-Mecklenburg Police Department: 2006-2007



¹These totals exclude duplicate and cancelled calls for service; they include calls handled by the Crime Reporting Unit as well as by division field officers, detectives and other CMPD staff.

Uniform Crime Reporting Procedures

The Charlotte-Mecklenburg Police Department reports offense and arrest statistics in accordance with standard Uniform Crime Reporting (UCR) guidelines. UCR policy states that any adjustments to previous months can be made on the current month's report:

...In tabulating crime counts, an agency may find that offense totals for past months require adjustments due to developments in the investigation or other handling of the matter. It may be necessary to adjust totals reported to UCR for the past month or prior months. Needed adjustments can be made on the current month's report and do not affect the reliability of the figures in that such adjustments tend to equalize each other from month to month over a period of time.

- *Uniform Crime Reporting Handbook*, FBI, 1984, p. 42-43

We are required to report crime monthly to the UCR program, and we do therefore make an effort to process monthly changes in a timely manner. However, occasionally due to the review and processing required for reclassifying, unbounding or clearing cases, the current month's totals may reflect the processing of a backlog of these changes from previous months.

Users of the data are cautioned that conclusions about substantial changes in crime trends or in clearance rates based on only a single month's data or trend may reflect some of these adjustments. For this reason, in addition to the monthly and year-to-date trends on Page 1, the monthly report routinely includes a comparison for the previous 12 months (p. 4), as well as graphs that provide seasonal/monthly comparisons over a five-year period (p. 5-8).

UCR Definitions and Terms:

Index Crime: the eight offenses that the national UCR program tracks on a yearly basis to gauge trends in the extent of crime, despite differences among state and local criminal statutes. These offenses were selected on the basis of several factors: seriousness, frequency of occurrence, pervasiveness in all geographic areas, and/or likelihood of being reported to law enforcement.

Violent Index: includes the offenses of murder/non-negligent manslaughter, rape, robbery, and aggravated assault

Property Index: includes the offenses of burglary, larceny, vehicle theft and arson

Murder/non-negligent manslaughter: the willful killing of one human being by another

Justifiable Homicide: limited by UCR to either a killing by a law enforcement officer in the line of duty or a killing by a citizen of a felon during the commission of a felony. If a homicide is determined to be "justifiable" by this definition, it is subtracted from the murder/non-negligent manslaughter category after investigation.

Rape: the carnal knowledge of a female forcibly and against her will [Note: This offense does not include other sex offenses or statutory (non-forcible) rape.]

Robbery: the taking or attempt to take anything of value from the care, custody, or control of a person or persons by force, threat of force or violence, or by putting the victim in fear.

Aggravated assault: an unlawful attack by one person on another for the purpose of inflicting severe or aggravated bodily injury; includes 1) all assaults in which a weapon of any type is used or is threatened to be used and/or 2) all assaults where serious injury occurs.

Burglary: the unlawful entry or attempted entry of a structure to commit a felony or a theft

Larceny-Theft: the unlawful taking (or attempt), carrying, leading, or riding away of property from the possession or constructive possession of another [Note: Larceny/theft of a motor vehicle is classed separately.]

Vehicle Theft: the theft or attempted theft of a motor vehicle (a self-propelled vehicle that runs on land and not on rails, excluding farm and construction equipment)

Arson: the willful or malicious burning or attempt to burn, with or without intent to defraud, a structure, motor vehicle, personal property of another, etc.

Hierarchy rule: For cases involving multiple-offenses, the incident is classified and counted based on the highest offense on a hierarchy of crimes established by UCR. For example, for an incident involving a rape and a burglary, the incident would be counted in the rape category because rape is higher than burglary on the hierarchy.

Clearance: A case is considered cleared when either at least one arrest is made for the offense or when one offender's identity is established by investigation but the offender will not be arrested for reasons outside law enforcement control (offender dies, victim refuses to prosecute, district attorney declines prosecution, extradition is refused, etc.).

Unfounding: A case is "unfounded" and subtracted from the crime counts when investigation establishes that the incident did not actually occur or that the actions within the incident are not criminal based on current law.

For additional information, please consult the *UCR Handbook* on the FBI website at <http://www.fbi.gov/ucr/ucr.htm>.

This report was compiled by the Research, Planning, and Analysis Division; the new division Index crime data (under the boundaries adopted Jan 13, 2007) for previous months was compiled with the assistance of Becky Wilkins and Doris Bowen.

We make an effort to present the most accurate information available at the time this report is published. Please notify the Research, Planning, and Analysis office if you have any questions about the data in this report or about an error that was missed in proofing the report.

Veronica Sorban
Ed Williams