



---

**CHARLOTTE-MECKLENBURG POLICE DEPARTMENT  
MONTHLY SUMMARY REPORT  
MAY, 2008**

---

---

**Rodney Monroe  
Chief of Police**

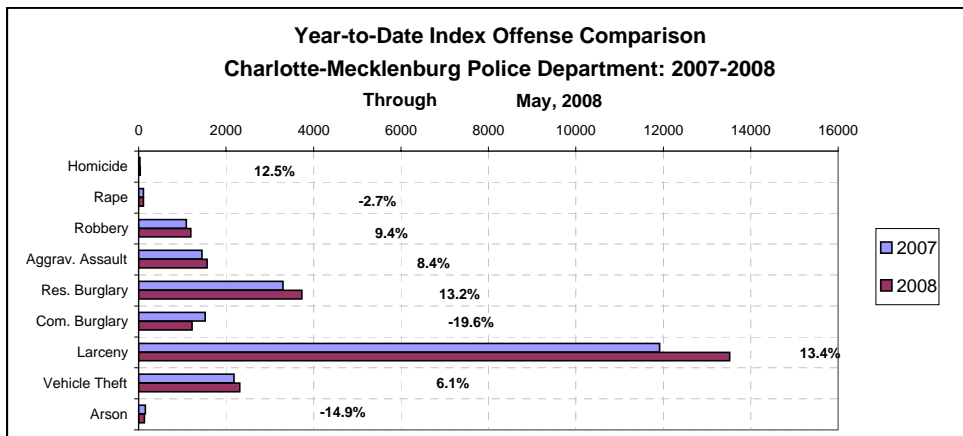
---

**INDEX OFFENSES REPORTED TO CHARLOTTE-MECKLENBURG POLICE DEPARTMENT**

May, 2008 INDEX OFFENSES	# THIS MONTH	% OF ALL INDEX	# LAST MONTH	MONTHLY % CHANGE	SAME MONTH LAST YEAR	MONTHLY % CHANGE	THIS YEAR TO DATE	LAST YEAR TO DATE	ANNUAL % CHANGE
HOMICIDE (MURDER & NON- NEGLIGENT MANSLAUGHTER)*	6	0.1%	10	-40.0%	7	-14.3%	36	32	12.5%
RAPE TOTAL	23	0.4%	16	43.8%	20	15.0%	108	111	-2.7%
ACTUAL	22	0.4%	15	46.7%	19	15.8%	99	108	-8.3%
ATTEMPT	1	0.0%	1	0.0%	1	0.0%	9	3	200.0%
ROBBERY TOTAL	260	5.0%	250	4.0%	286	-9.1%	1196	1093	9.4%
ARMED	217	4.2%	212	2.4%	228	-4.8%	988	866	14.1%
STRONG-ARM	43	0.8%	38	13.2%	58	-25.9%	208	227	-8.4%
AGGRAVATED ASSAULT TOTAL	351	6.7%	254	38.2%	336	4.5%	1569	1448	8.4%
BURGLARY TOTAL	1098	21.1%	932	17.8%	1078	1.9%	4958	4820	2.9%
RESIDENTIAL	823	15.8%	681	20.9%	692	18.9%	3736	3301	13.2%
COMMERCIAL	275	5.3%	251	9.6%	386	-28.8%	1222	1519	-19.6%
*****									
FORCE	874	16.8%	756	15.6%	882	-0.9%	4032	3906	3.2%
NO FORCE	130	2.5%	90	44.4%	131	-0.8%	538	594	-9.4%
ATTEMPT	94	1.8%	86	9.3%	65	44.6%	388	320	21.3%
LARCENY TOTAL	2984	57.3%	2740	8.9%	2625	13.7%	13520	11919	13.4%
\$200 AND OVER	1568	30.1%	1401	11.9%	1409	11.3%	7040	6165	14.2%
\$50 TO \$200	579	11.1%	473	22.4%	463	25.1%	2358	2197	7.3%
UNDER \$50	837	16.1%	866	-3.3%	753	11.2%	4122	3557	15.9%
*****									
FROM AUTO	1779	34.1%	1610	10.5%	1335	33.3%	7959	6252	27.3%
BICYCLE	31	0.6%	22	40.9%	35	-11.4%	84	83	1.2%
SHOPLIFTING	280	5.4%	300	-6.7%	228	22.8%	1350	1092	23.6%
OTHERS	894	17.2%	808	10.6%	1027	-13.0%	4127	4492	-8.1%
VEHICLE THEFT TOTAL	461	8.8%	508	-9.3%	487	-5.3%	2314	2180	6.1%
ARSON TOTAL	27	0.5%	18	50.0%	37	-27.0%	131	154	-14.9%
TOTALS	5210	100.0%	4728	10.2%	4876	6.8%	23832	21757	9.5%
VIOLENT PROPERTY	640	12.3%	530	20.8%	649	-1.4%	2909	2684	8.4%
	4570	87.7%	4198	8.9%	4227	8.1%	20923	19073	9.7%

NOTE: These totals include offenses reported to the Charlotte-Mecklenburg Police Department in accordance with the Uniform Crime Reporting (UCR) Program. Because the data in this report is primarily based on the automated Records Management System, cases counted this month may include offenses from previous months/years that were reclassified after investigation.

\*Homicide totals for April, 2008 reflect the reclassification of one case from 2007 reclassified to Justifiable Homicide in April and subtracted from this month and the 2008 year-to-date totals based on summary UCR adjustment rules (See the glossary at the end of this report for the UCR definition of justifiable homicide).

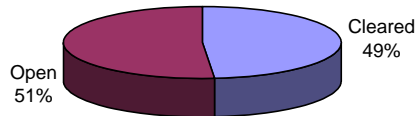


**INDEX CLEARANCES REPORTED BY THE CHARLOTTE-MECKLENBURG POLICE DEPARTMENT**

May, 2008 INDEX CLEARANCES	THIS MONTH:		LAST MONTH:		SAME MO. LAST YR:		THIS YEAR TO DATE:		LAST YEAR TO DATE:	
	NO.	%	NO.	%	NO.	%	NO.	%	NO.	%
MURDER & NON-NEGLIGENT MANSLAUGHTER <sup>1</sup>	6	100.0%	4	40.0%	4	57.1%	15	41.7%	18	56.3%
RAPE TOTAL	10	43.5%	17	106.3%	16	80.0%	78	72.2%	83	74.8%
ACTUAL	10	45.5%	16	106.7%	15	78.9%	72	72.7%	79	73.1%
ATTEMPT	0	0.0%	1	100.0%	1	100.0%	6	66.7%	4	133.3%
ROBBERY TOTAL	51	19.6%	73	29.2%	70	24.5%	326	27.3%	304	27.8%
ARMED	43	19.8%	63	29.7%	62	27.2%	274	27.7%	252	29.1%
STRONG-ARM	43	100.0%	10	26.3%	8	13.8%	87	41.8%	52	22.9%
AGGRAVATED ASSAULT TOTAL	351	100.0%	138	54.3%	151	44.9%	996	63.5%	677	46.8%
BURGLARY TOTAL	97	8.8%	53	5.7%	89	8.3%	404	8.1%	556	11.5%
RESIDENTIAL	74	9.0%	38	5.6%	64	9.2%	299	8.0%	365	11.1%
COMMERCIAL	23	8.4%	15	6.0%	25	6.5%	105	8.6%	191	12.6%
LARCENY TOTAL	381	12.8%	385	14.1%	283	10.8%	1866	13.8%	1393	11.7%
FROM AUTO	34	1.9%	39	2.4%	27	2.0%	184	2.3%	162	2.6%
BICYCLE	3	9.7%	0	0.0%	1	2.9%	5	6.0%	1	1.2%
SHOPLIFTING	219	78.2%	200	66.7%	129	56.6%	995	73.7%	640	58.6%
OTHERS	125	14.0%	146	18.1%	126	12.3%	682	16.5%	590	13.1%
VEHICLE THEFT TOTAL	45	9.8%	53	10.4%	40	8.2%	274	11.8%	284	13.0%
ARSON TOTAL	2	7.4%	5	27.8%	8	21.6%	22	16.8%	24	15.6%
TOTALS	943	18.1%	728	15.4%	661	13.6%	3981	16.7%	3339	15.3%
VIOLENT PROPERTY	418	65.3%	232	43.8%	241	37.1%	1415	48.6%	1082	40.3%
	525	11.5%	496	11.8%	420	9.9%	2566	12.3%	2257	11.8%

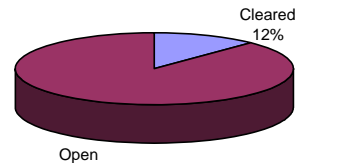
<sup>1</sup>NOTE : Clearances are reported in accordance with Uniform Crime Report guidelines. Since clearances are not counted for UCR until they are entered in the Records Management system, any delays in entry of the documentation may result in some clearances being reported later in succeeding months.

**Year-to-Date Violent Index Clearance Rate  
Charlotte-Mecklenburg Police Department: 2008**



Through May, 2008

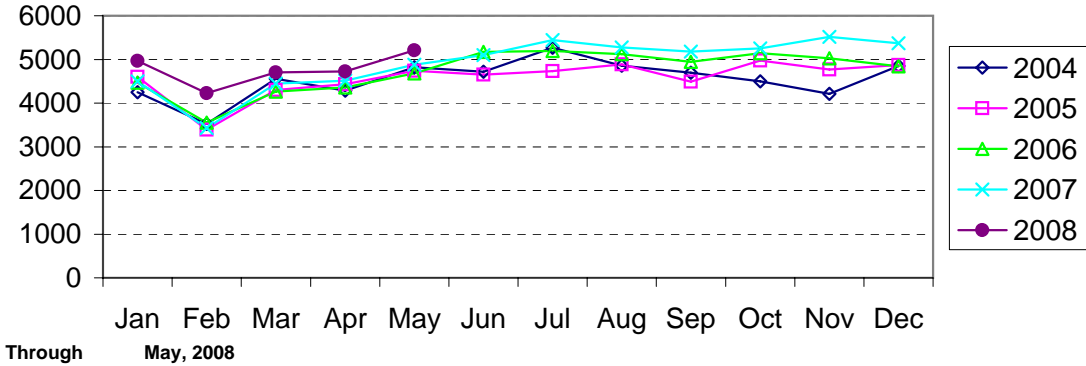
**Year-to-Date Property Index Clearance Rate  
Charlotte-Mecklenburg Police Department: 2008**



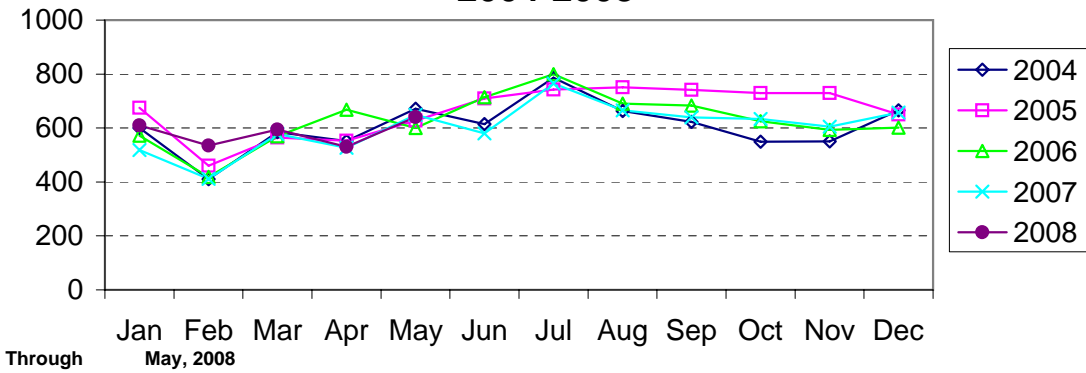
Through May, 2008

Clearance rates for crime reporting are calculated by dividing the number of crimes cleared during a designated time span by the number of crimes reported in the same period and converting the result to a percentage (multiplying by 100). Since cases from previous reporting periods can be cleared during the designated time span, the rate may be higher than 100%.

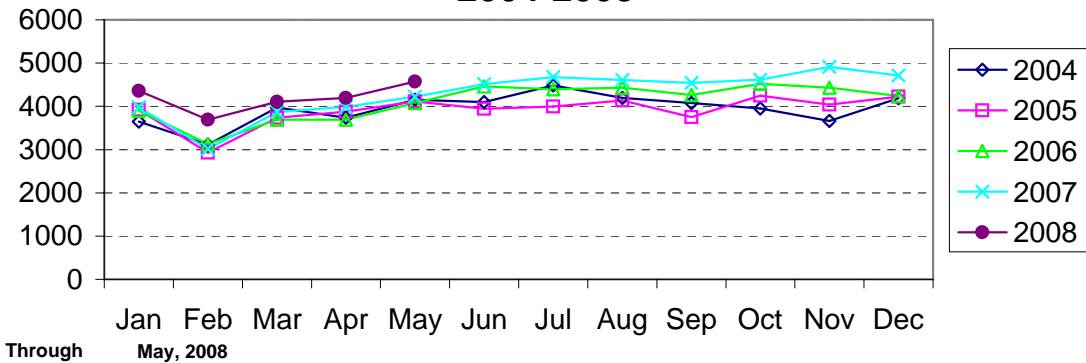
### Index Offenses Reported by Month Charlotte-Mecklenburg Police Department: 2004-2008



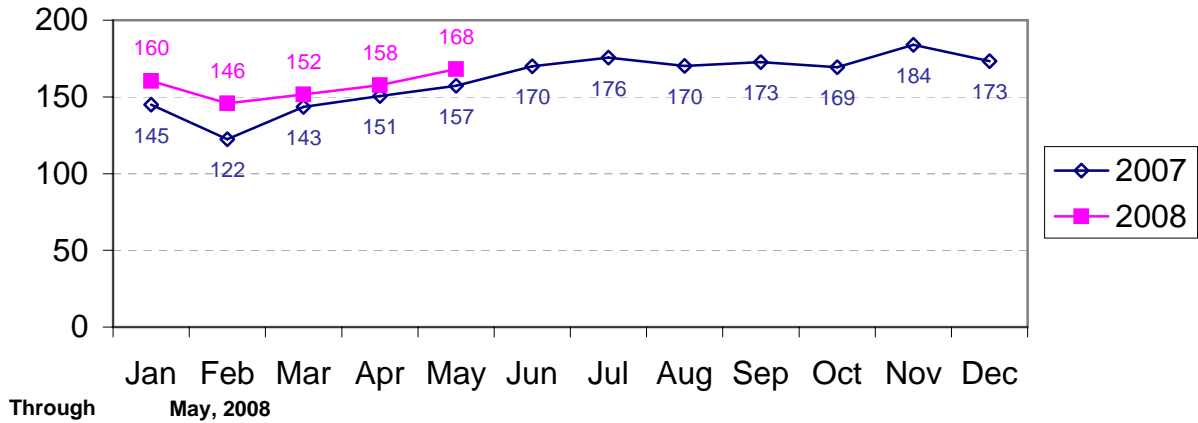
### Violent Index Offenses Reported by Month Charlotte-Mecklenburg Police Department: 2004-2008



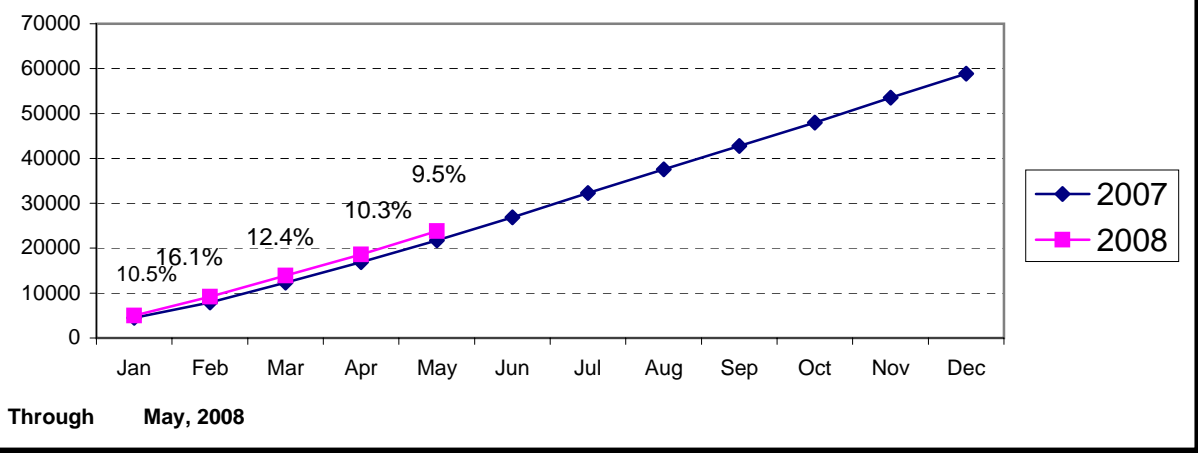
### Property Index Offenses Reported by Month Charlotte-Mecklenburg Police Department: 2004-2008

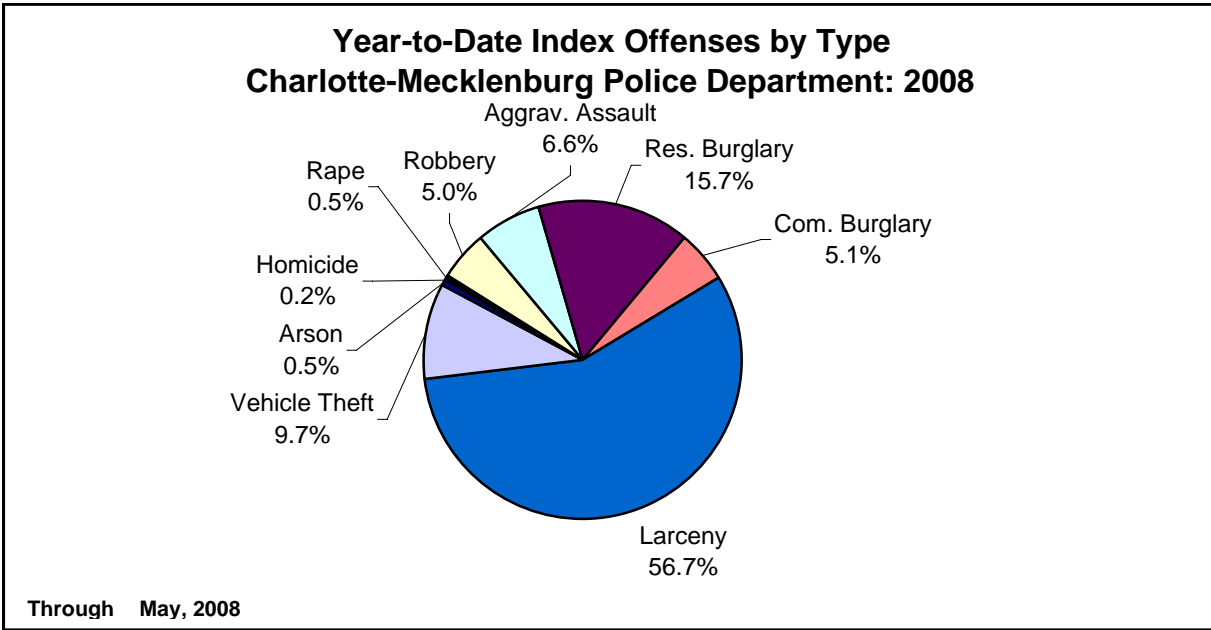
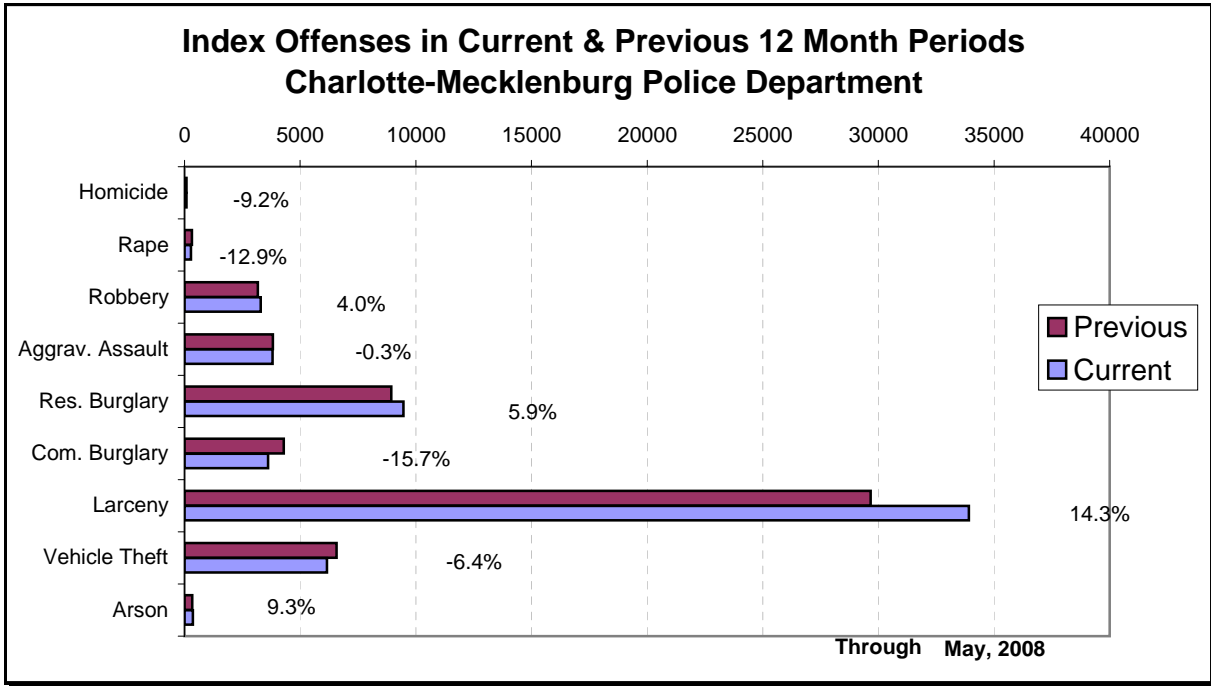


### Index Offense Per Day Average by Month Charlotte-Mecklenburg Police Department: 2007-2008

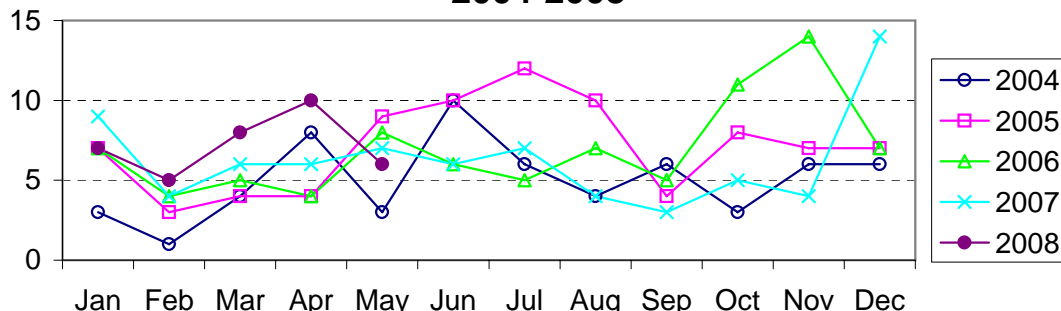


### Index Offenses Year-to-Date Cumulative Totals Charlotte-Mecklenburg Police Department: 2007-2008





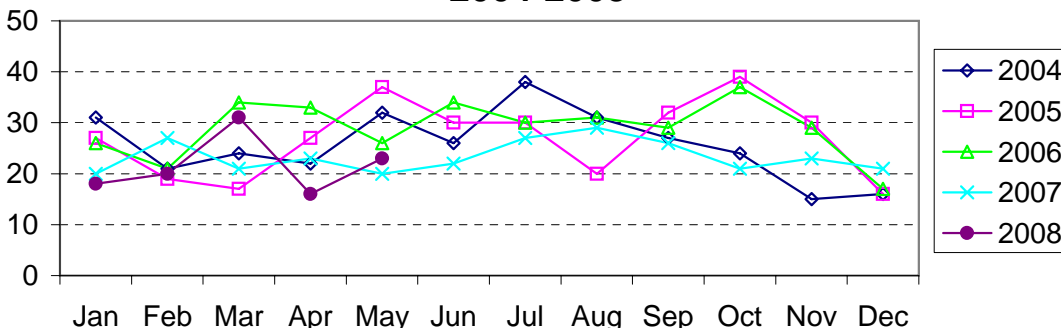
### Homicide Reported by Month Charlotte-Mecklenburg Police Department: 2004-2008



Note: These totals reflect the month that the cases were classed as homicide and reported to the UCR program, not the month of occurrence.

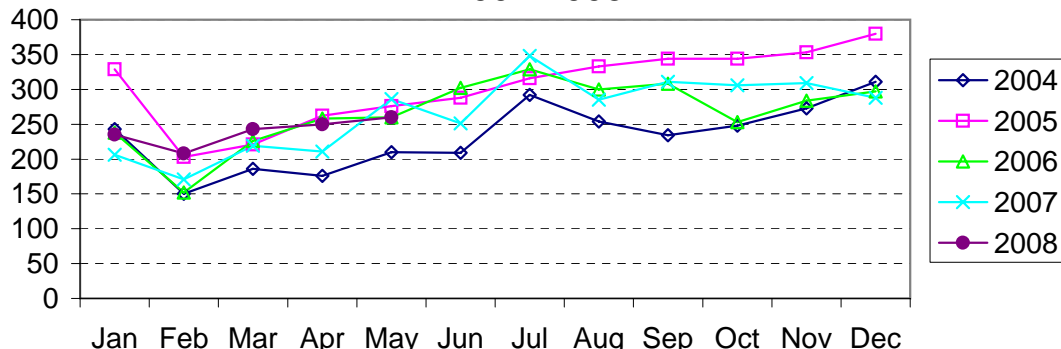
Through May, 2008

### Rape Reported by Month Charlotte-Mecklenburg Police Department: 2004-2008



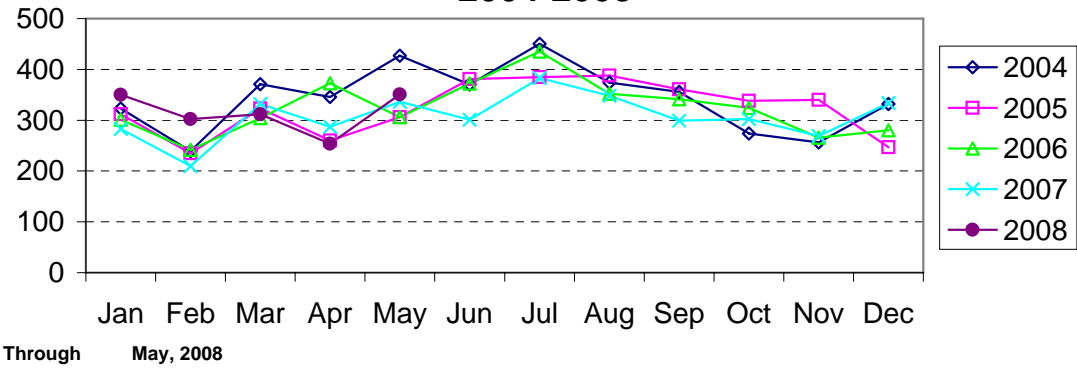
Through May, 2008

### Robbery Reported by Month Charlotte-Mecklenburg Police Department: 2004-2008

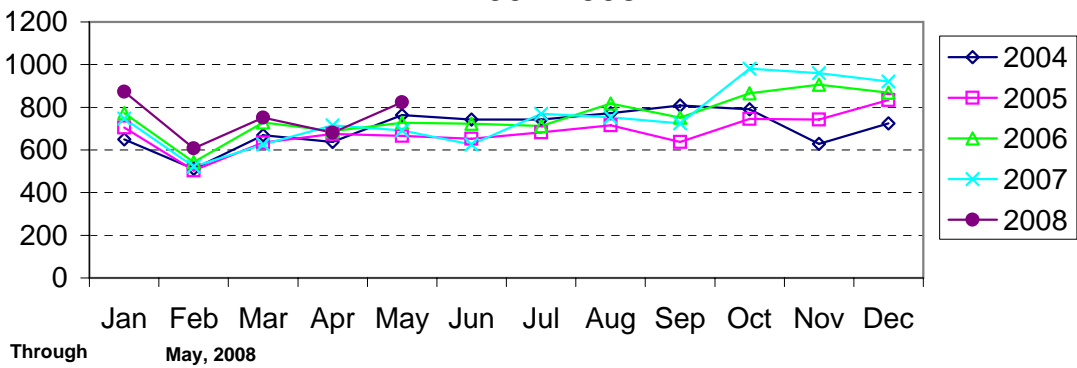


Through May, 2008

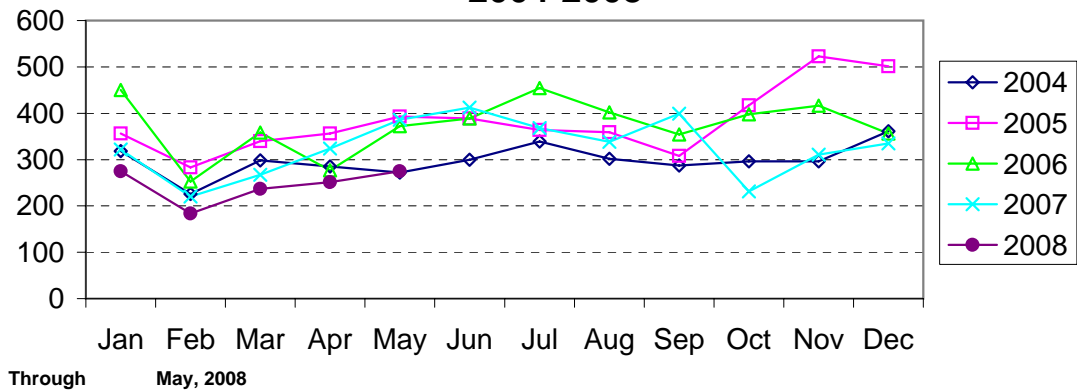
**Aggravated Assault Reported by Month  
Charlotte-Mecklenburg Police Department:  
2004-2008**



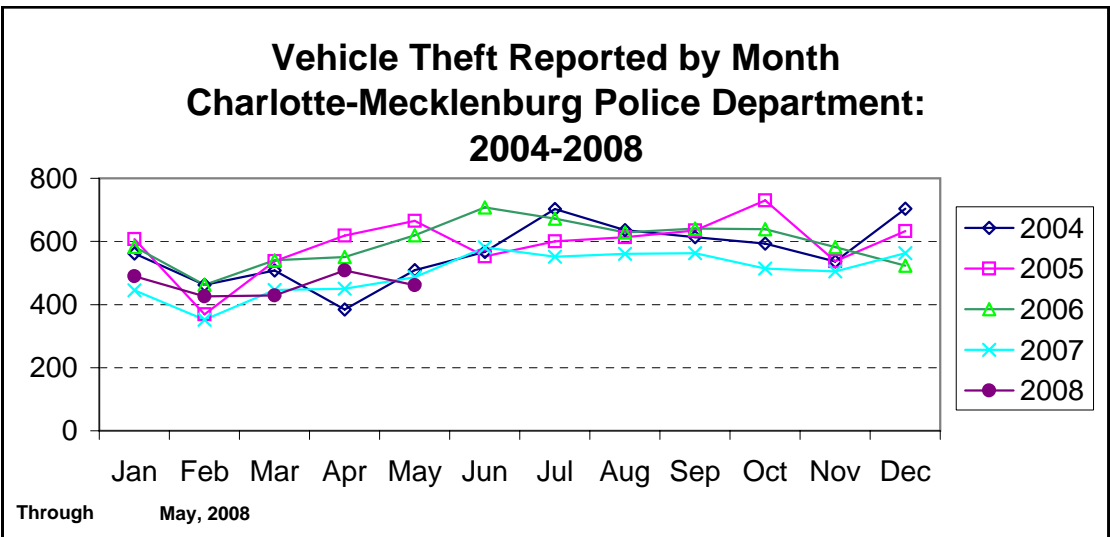
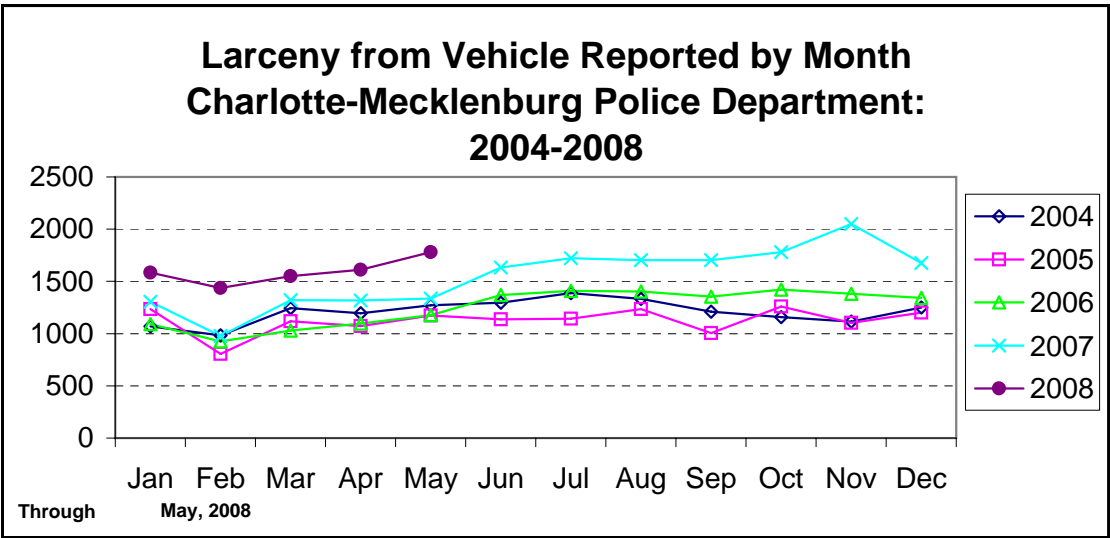
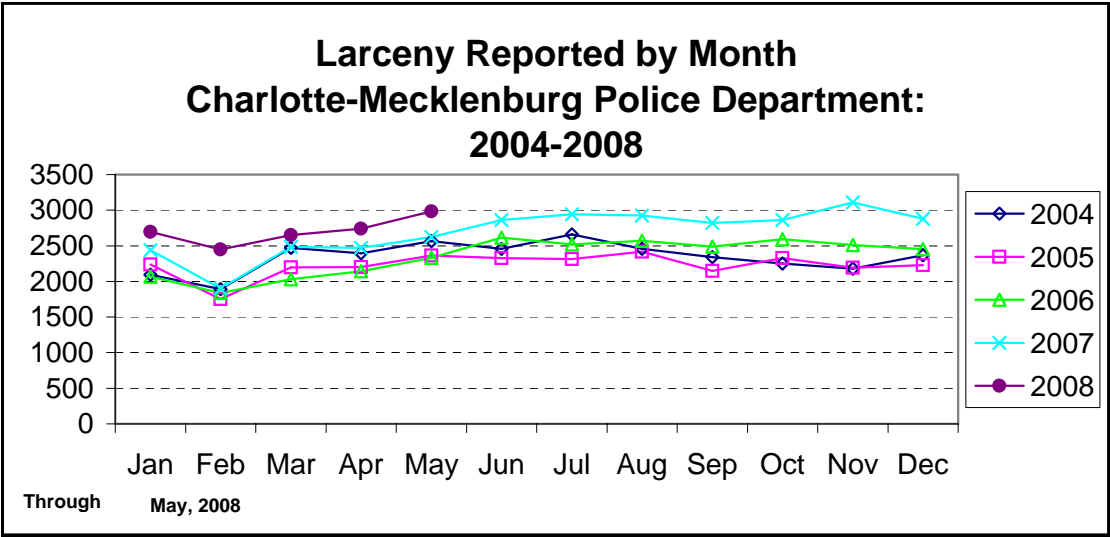
**Residential Burglary Reported by Month  
Charlotte-Mecklenburg Police Department:  
2004-2008**



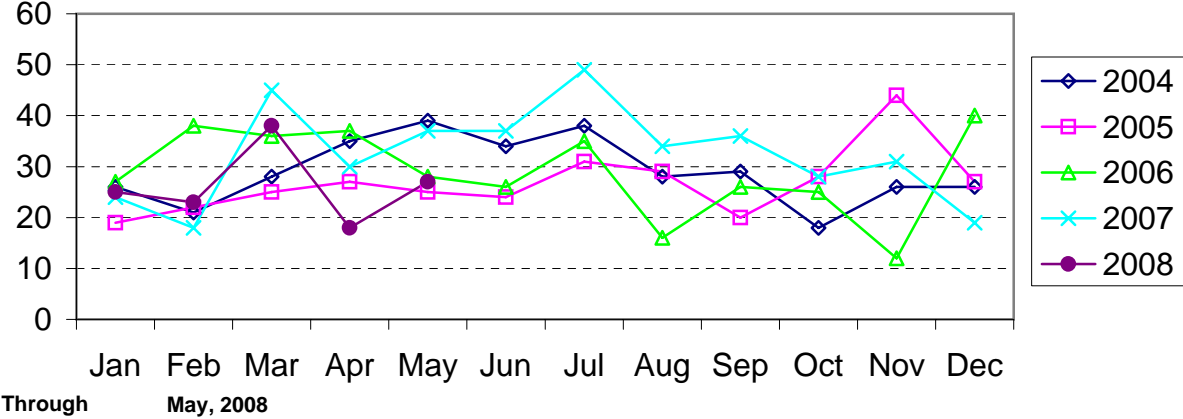
**Commercial Burglary Reported by Month  
Charlotte-Mecklenburg Police Department:  
2004-2008**







## Arson Reported by Month Charlotte-Mecklenburg Police Department: 2004-2008



**East Service Area: Index Offenses Reported By Division, May, 2008**

<b>Eastway Division (06)</b>								
	<u>Current month</u>	<u>Previous Month</u>	<u>Percent Change</u>	<u>Same Month Last Year</u>	<u>Percent Change</u>	<u>Current Year-to-Date</u>	<u>Past Year-to-Date</u>	<u>Percent Change</u>
MURDER & NON-NEGLIGENT MANSLAUGHTER	0	1	-100.0%	1	-100.0%	3	3	0.0%
RAPE	1	2	-50.0%	2	-50.0%	9	7	28.6%
ROBBERY	27	27	0.0%	34	-20.6%	116	136	-14.7%
ARMED	24	24	0.0%	29	-17.2%	104	111	-6.3%
STRONG-ARM	3	3	0.0%	5	-40.0%	12	25	-52.0%
AGGRAVATED ASSAULT	43	18	138.9%	28	53.6%	159	122	30.3%
BURGLARY	93	94	-1.1%	89	4.5%	421	385	9.4%
RESIDENTIAL	77	70	10.0%	64	20.3%	322	289	11.4%
COMMERCIAL	16	24	-33.3%	25	-36.0%	99	96	3.1%
LARCENY	244	181	34.8%	196	24.5%	1045	806	29.7%
FROM AUTO	112	102	9.8%	85	31.8%	572	380	50.5%
BICYCLE	7	0	NA	3		14	7	100.0%
SHOPLIFTING	43	36	19.4%	27	59.3%	188	117	60.7%
OTHERS	82	43	90.7%	81	1.2%	271	302	-10.3%
VEHICLE THEFT	41	64	-35.9%	29	41.4%	219	165	32.7%
ARSON	1	1	0.0%	1	0.0%	12	9	33.3%
TOTALS	450	388	16.0%	380	18.4%	1984	1633	21.5%
VIOLENT PROPERTY	71	48	47.9%	65	9.2%	287	268	7.1%
	379	340	11.5%	315	20.3%	1697	1365	24.3%

<b>North Tryon Division (07)</b>								
	<u>Current month</u>	<u>Previous Month</u>	<u>Percent Change</u>	<u>Same Month Last Year</u>	<u>Percent Change</u>	<u>Current Year-to-Date</u>	<u>Past Year-to-Date</u>	<u>Percent Change</u>
MURDER & NON-NEGLIGENT MANSLAUGHTER	2	0	NA	2	0.0%	2	7	-71.4%
RAPE	1	0	NA	2	-50.0%	8	11	-27.3%
ROBBERY	36	24	50.0%	37	-2.7%	155	138	12.3%
ARMED	32	20	60.0%	29	10.3%	132	115	14.8%
STRONG-ARM	4	4	0.0%	8	-50.0%	23	23	0.0%
AGGRAVATED ASSAULT	28	22	27.3%	30	-6.7%	122	150	-18.7%
BURGLARY	89	82	8.5%	71	25.4%	392	346	13.3%
RESIDENTIAL	62	53	17.0%	43	44.2%	245	254	-3.5%
COMMERCIAL	27	29	-6.9%	28	-3.6%	147	92	59.8%
LARCENY	127	116	9.5%	146	-13.0%	674	672	0.3%
FROM AUTO	63	69	-8.7%	74	-14.9%	360	368	-2.2%
BICYCLE	2	1	100.0%	4		5	6	-16.7%
SHOPLIFTING	10	10	0.0%	9	11.1%	57	33	72.7%
OTHERS	52	36	44.4%	59	-11.9%	252	265	-4.9%
VEHICLE THEFT	40	62	-35.5%	43	-7.0%	238	254	-6.3%
ARSON	3	1	200.0%	1	200.0%	8	10	-20.0%
TOTALS	326	307	6.2%	332	-1.8%	1599	1588	0.7%
VIOLENT PROPERTY	67	46	45.7%	71	-5.6%	287	306	-6.2%
	259	261	-0.8%	261	-0.8%	1312	1282	2.3%

**North Service Area:**

**May, 2008**

<b>North Division (11)</b>								
	<u>Current month</u>	<u>Previous Month</u>	<u>Percent Change</u>	<u>Same Month Last Year</u>	<u>Percent Change</u>	<u>Current Year-to-Date</u>	<u>Past Year-to-Date</u>	<u>Percent Change</u>
MURDER & NON-NEGLIGENT MANSLAUGHTER	0	1	-100.0%	1	-100.0%	7	1	600.0%
RAPE	2	1	100.0%	0	NA	8	10	-20.0%
ROBBERY	17	8	112.5%	13	30.8%	56	52	7.7%
ARMED	15	8	87.5%	12	25.0%	48	45	6.7%
STRONG-ARM	2	0	NA	1	100.0%	8	7	14.3%
AGGRAVATED ASSAULT	33	30	10.0%	31	6.5%	128	123	4.1%
BURGLARY	133	108	23.1%	98	35.7%	696	641	8.6%
RESIDENTIAL	100	85	17.6%	80	25.0%	542	491	10.4%
COMMERCIAL	33	23	43.5%	18	83.3%	154	150	2.7%
LARCENY	194	217	-10.6%	222	-12.6%	1013	1040	-2.6%
FROM AUTO	80	111	-27.9%	107	-25.2%	508	544	-6.6%
BICYCLE	2	0	NA	1		2	4	-50.0%
SHOPLIFTING	39	43	-9.3%	20	95.0%	170	92	84.8%
OTHERS	73	63	15.9%	94	-22.3%	333	400	-16.8%
VEHICLE THEFT	23	34	-32.4%	51	-54.9%	171	173	-1.2%
ARSON	3	0	NA	5	-40.0%	13	20	-35.0%
TOTALS	405	399	1.5%	421	-3.8%	2092	2060	1.6%
VIOLENT PROPERTY	52	40	30.0%	45	15.6%	199	186	7.0%
	353	359	-1.7%	376	-6.1%	1893	1874	1.0%

<b>University City Division (14)</b>								
	<u>Current month</u>	<u>Previous Month</u>	<u>Percent Change</u>	<u>Same Month Last Year</u>	<u>Percent Change</u>	<u>Current Year-to-Date</u>	<u>Past Year-to-Date</u>	<u>Percent Change</u>
MURDER & NON-NEGLIGENT MANSLAUGHTER	0	0	NA	1	-100.0%	1	1	0.0%
RAPE	0	2	-100.0%	3	-100.0%	7	11	-36.4%
ROBBERY	15	12	25.0%	18	-16.7%	83	53	56.6%
ARMED	14	11	27.3%	14	0.0%	69	46	50.0%
STRONG-ARM	1	1	0.0%	4	-75.0%	14	7	100.0%
AGGRAVATED ASSAULT	13	5	160.0%	9	44.4%	76	38	100.0%
BURGLARY	86	71	21.1%	87	-1.1%	440	343	28.3%
RESIDENTIAL	61	61	0.0%	65	-6.2%	351	248	41.5%
COMMERCIAL	25	10	150.0%	22	13.6%	89	95	-6.3%
LARCENY	314	286	9.8%	242	29.8%	1567	1163	34.7%
FROM AUTO	206	175	17.7%	145	42.1%	1049	680	54.3%
BICYCLE	2	0	NA	4		3	6	-50.0%
SHOPLIFTING	36	46	-21.7%	22	63.6%	162	126	28.6%
OTHERS	70	65	7.7%	71	-1.4%	353	351	0.6%
VEHICLE THEFT	29	47	-38.3%	35	-17.1%	207	163	27.0%
ARSON	0	0	NA	2	-100.0%	6	9	-33.3%
TOTALS	457	423	8.0%	397	15.1%	2387	1781	34.0%
VIOLENT PROPERTY	28	19	47.4%	31	-9.7%	167	103	62.1%
	429	404	6.2%	366	17.2%	2220	1678	32.3%

**Southeast Service Area**

**May, 2008**

<b>Hickory Grove Division (12)</b>								
	<u>Current month</u>	<u>Previous Month</u>	<u>Percent Change</u>	<u>Same Month Last Year</u>	<u>Percent Change</u>	<u>Current Year-to-Date</u>	<u>Past Year-to-Date</u>	<u>Percent Change</u>
MURDER & NON-NEGLIGENT MANSLAUGHTER	1	1	0.0%	0	NA	4	0	NA
RAPE	0	0	NA	1	-100.0%	5	8	-37.5%
ROBBERY	15	23	-34.8%	14	7.1%	83	81	2.5%
ARMED	13	21	-38.1%	12	8.3%	74	62	19.4%
STRONG-ARM	2	2	0.0%	2	0.0%	9	19	-52.6%
AGGRAVATED ASSAULT	8	16	-50.0%	16	-50.0%	75	78	-3.8%
BURGLARY	94	68	38.2%	76	23.7%	342	353	-3.1%
RESIDENTIAL	81	58	39.7%	59	37.3%	294	286	2.8%
COMMERCIAL	13	10	30.0%	17	-23.5%	48	67	-28.4%
LARCENY	123	116	6.0%	140	-12.1%	626	590	6.1%
FROM AUTO	63	53	18.9%	66	-4.5%	319	280	13.9%
BICYCLE	4	0	NA	2		5	10	-50.0%
SHOPLIFTING	12	15	-20.0%	5	140.0%	66	46	43.5%
OTHERS	44	48	-8.3%	67	-34.3%	236	254	-7.1%
VEHICLE THEFT	29	43	-32.6%	33	-12.1%	198	161	23.0%
ARSON	4	3	33.3%	5	-20.0%	11	8	37.5%
TOTALS	274	270	1.5%	285	-3.9%	1344	1279	5.1%
VIOLENT PROPERTY	24 250	40 230	-40.0% 8.7%	31 254	-22.6% -1.6%	167 1177	167 1112	0.0% 5.8%

<b>Independence Division (17)</b>								
	<u>Current month</u>	<u>Previous Month</u>	<u>Percent Change</u>	<u>Same Month Last Year</u>	<u>Percent Change</u>	<u>Current Year-to-Date</u>	<u>Past Year-to-Date</u>	<u>Percent Change</u>
MURDER & NON-NEGLIGENT MANSLAUGHTER	1	2	-50.0%	0	NA	3	2	50.0%
RAPE	0	2	-100.0%	3	-100.0%	9	9	0.0%
ROBBERY	26	20	30.0%	29	-10.3%	93	74	25.7%
ARMED	23	15	53.3%	20	15.0%	77	58	32.8%
STRONG-ARM	3	5	-40.0%	9	-66.7%	16	16	0.0%
AGGRAVATED ASSAULT	31	14	121.4%	21	47.6%	110	101	8.9%
BURGLARY	80	67	19.4%	75	6.7%	322	323	-0.3%
RESIDENTIAL	66	51	29.4%	51	29.4%	267	252	6.0%
COMMERCIAL	14	16	-12.5%	24	-41.7%	55	71	-22.5%
LARCENY	202	153	32.0%	175	15.4%	825	778	6.0%
FROM AUTO	127	83	53.0%	93	36.6%	492	393	25.2%
BICYCLE	4	7	-42.9%	7		14	15	-6.7%
SHOPLIFTING	20	16	25.0%	11	81.8%	85	68	25.0%
OTHERS	51	47	8.5%	64	-20.3%	234	302	-22.5%
VEHICLE THEFT	35	31	12.9%	36	-2.8%	163	186	-12.4%
ARSON	3	1	200.0%	2	50.0%	9	5	80.0%
TOTALS	378	290	30.3%	341	10.9%	1534	1478	3.8%
VIOLENT PROPERTY	58 320	38 252	52.6% 27.0%	53 288	9.4% 11.1%	215 1319	186 1292	15.6% 2.1%

**South Service Area:**

**May, 2008**

<b>Providence Division (16)</b>								
	<u>Current month</u>	<u>Previous Month</u>	<u>Percent Change</u>	<u>Same Month Last Year</u>	<u>Percent Change</u>	<u>Current Year-to-Date</u>	<u>Past Year-to-Date</u>	<u>Percent Change</u>
MURDER & NON-NEGLIGENT MANSLAUGHTER	0	0	NA	1	-100.0%	0	3	-100.0%
RAPE	0	2	-100.0%	1	-100.0%	8	3	166.7%
ROBBERY	5	15	-66.7%	13	-61.5%	55	47	17.0%
ARMED	2	10	-80.0%	12	-83.3%	38	29	31.0%
STRONG-ARM	3	5	-40.0%	1	200.0%	17	18	-5.6%
AGGRAVATED ASSAULT	12	10	20.0%	17	-29.4%	72	61	18.0%
BURGLARY	87	68	27.9%	104	-16.3%	349	408	-14.5%
RESIDENTIAL	66	52	26.9%	38	73.7%	272	226	20.4%
COMMERCIAL	21	16	31.3%	66	-68.2%	77	182	-57.7%
LARCENY	260	263	-1.1%	246	5.7%	1351	1147	17.8%
FROM AUTO	172	171	0.6%	124	38.7%	890	639	39.3%
BICYCLE	1	4	-75.0%	2		8	7	14.3%
SHOPLIFTING	17	18	-5.6%	23	-26.1%	102	106	-3.8%
OTHERS	70	70	0.0%	97	-27.8%	351	395	-11.1%
VEHICLE THEFT	29	27	7.4%	23	26.1%	111	107	3.7%
ARSON	1	3	-66.7%	4	-75.0%	8	6	33.3%
TOTALS	394	388	1.5%	409	-3.7%	1954	1782	9.7%
VIOLENT PROPERTY	17	27	-37.0%	32	-46.9%	135	114	18.4%
	377	361	4.4%	377	0.0%	1819	1668	9.1%

<b>South Division (22)</b>								
	<u>Current month</u>	<u>Previous Month</u>	<u>Percent Change</u>	<u>Same Month Last Year</u>	<u>Percent Change</u>	<u>Current Year-to-Date</u>	<u>Past Year-to-Date</u>	<u>Percent Change</u>
MURDER & NON-NEGLIGENT MANSLAUGHTER	0	0	NA	0	NA	0	0	NA
RAPE	0	1	-100.0%	0	NA	3	3	0.0%
ROBBERY	4	7	-42.9%	3	33.3%	26	16	62.5%
ARMED	3	7	-57.1%	1	200.0%	20	10	100.0%
STRONG-ARM	1	0	NA	2	-50.0%	6	6	0.0%
AGGRAVATED ASSAULT	6	4	50.0%	10	-40.0%	47	28	67.9%
BURGLARY	61	32	90.6%	46	32.6%	255	206	23.8%
RESIDENTIAL	46	24	91.7%	31	48.4%	202	157	28.7%
COMMERCIAL	15	8	87.5%	15	0.0%	53	49	8.2%
LARCENY	243	187	29.9%	150	62.0%	972	702	38.5%
FROM AUTO	168	120	40.0%	82	104.9%	629	357	76.2%
BICYCLE	1	4	-75.0%	2		8	3	166.7%
SHOPLIFTING	16	11	45.5%	3	433.3%	63	49	28.6%
OTHERS	58	52	11.5%	63	-7.9%	272	293	-7.2%
VEHICLE THEFT	17	4	325.0%	25	-32.0%	66	78	-15.4%
ARSON	1	-1	-200.0%	1	0.0%	5	12	-58.3%
TOTALS	332	234	41.9%	235	41.3%	1374	1045	31.5%
VIOLENT PROPERTY	10	12	-16.7%	13	-23.1%	76	47	61.7%
	322	222	45.0%	222	45.0%	1298	998	30.1%

**Southwest Service Area:**

**May, 2008**

<b>Westover Division (26)</b>								
	<u>Current month</u>	<u>Previous Month</u>	<u>Percent Change</u>	<u>Same Month Last Year</u>	<u>Percent Change</u>	<u>Current Year-to-Date</u>	<u>Past Year-to-Date</u>	<u>Percent Change</u>
MURDER & NON-NEGLIGENT MANSLAUGHTER	1	2	-50.0%	0	NA	4	3	33.3%
RAPE	3	0	NA	1	200.0%	14	9	55.6%
ROBBERY	30	22	36.4%	32	-6.3%	118	121	-2.5%
ARMED	26	18	44.4%	29	-10.3%	93	97	-4.1%
STRONG-ARM	4	4	0.0%	3	33.3%	25	24	4.2%
AGGRAVATED ASSAULT	40	32	25.0%	33	21.2%	179	182	-1.6%
BURGLARY	83	93	-10.8%	109	-23.9%	390	468	-16.7%
RESIDENTIAL	63	66	-4.5%	68	-7.4%	291	250	16.4%
COMMERCIAL	20	27	-25.9%	41	-51.2%	99	218	-54.6%
LARCENY	234	255	-8.2%	221	5.9%	1052	1065	-1.2%
FROM AUTO	151	169	-10.7%	115	31.3%	648	589	10.0%
BICYCLE	4	0	NA	0		5	3	66.7%
SHOPLIFTING	17	17	0.0%	30	-43.3%	85	122	-30.3%
OTHERS	62	69	-10.1%	76	-18.4%	314	351	-10.5%
VEHICLE THEFT	60	37	62.2%	33	81.8%	197	163	20.9%
ARSON	6	1	500.0%	1	500.0%	16	16	0.0%
TOTALS	457	442	3.4%	430	6.3%	1970	2027	-2.8%
VIOLENT PROPERTY	74 383	56 386	32.1% -0.8%	66 364	12.1% 5.2%	315 1655	315 1712	0.0% -3.3%

<b>Steele Creek Division (21)</b>								
	<u>Current month</u>	<u>Previous Month</u>	<u>Percent Change</u>	<u>Same Month Last Year</u>	<u>Percent Change</u>	<u>Current Year-to-Date</u>	<u>Past Year-to-Date</u>	<u>Percent Change</u>
MURDER & NON-NEGLIGENT MANSLAUGHTER	0	1	-100.0%	0	NA	6	0	NA
RAPE	1	1	0.0%	3	-66.7%	6	15	-60.0%
ROBBERY	12	28	-57.1%	27	-55.6%	115	103	11.7%
ARMED	8	25	-68.0%	23	-65.2%	99	82	20.7%
STRONG-ARM	4	3	33.3%	4	0.0%	16	21	-23.8%
AGGRAVATED ASSAULT	11	23	-52.2%	46	-76.1%	113	144	-21.5%
BURGLARY	83	75	10.7%	69	20.3%	394	342	15.2%
RESIDENTIAL	72	51	41.2%	44	63.6%	305	231	32.0%
COMMERCIAL	11	24	-54.2%	25	-56.0%	89	111	-19.8%
LARCENY	396	285	38.9%	276	43.5%	1464	1203	21.7%
FROM AUTO	258	173	49.1%	154	67.5%	896	672	33.3%
BICYCLE	2	2	0.0%	4		5	8	-37.5%
SHOPLIFTING	26	32	-18.8%	30	-13.3%	146	121	20.7%
OTHERS	110	78	41.0%	88	25.0%	417	402	3.7%
VEHICLE THEFT	42	47	-10.6%	58	-27.6%	222	215	3.3%
ARSON	3	5	-40.0%	3	0.0%	18	23	-21.7%
TOTALS	548	465	17.8%	482	13.7%	2338	2045	14.3%
VIOLENT PROPERTY	24 524	53 412	-54.7% 27.2%	76 406	-68.4% 29.1%	240 2098	262 1783	-8.4% 17.7%

**West Service Area:****May, 2008**

<b>Metro Division (02)</b>								
	<u>Current month</u>	<u>Previous Month</u>	<u>Percent Change</u>	<u>Same Month Last Year</u>	<u>Percent Change</u>	<u>Current Year-to-Date</u>	<u>Past Year-to-Date</u>	<u>Percent Change</u>
MURDER & NON-NEGLIGENT MANSLAUGHTER	1	1	0.0%	1	0.0%	4	7	-42.9%
RAPE	7	2	250.0%	3	133.3%	12	11	9.1%
ROBBERY	37	38	-2.6%	24	54.2%	144	119	21.0%
ARMED	27	32	-15.6%	19	42.1%	118	94	25.5%
STRONG-ARM	10	6	66.7%	5	100.0%	26	25	4.0%
AGGRAVATED ASSAULT	67	45	48.9%	53	26.4%	272	220	23.6%
BURGLARY	101	80	26.3%	105	-3.8%	417	393	6.1%
RESIDENTIAL	60	51	17.6%	63	-4.8%	280	243	15.2%
COMMERCIAL	41	29	41.4%	42	-2.4%	137	150	-8.7%
LARCENY	231	193	19.7%	192	20.3%	925	766	20.8%
FROM AUTO	112	93	20.4%	79	41.8%	443	324	36.7%
BICYCLE	1	2	-50.0%	2		9	3	200.0%
SHOPLIFTING	21	21	0.0%	15	40.0%	74	67	10.4%
OTHERS	97	77	26.0%	96	1.0%	399	372	7.3%
VEHICLE THEFT	41	56	-26.8%	51	-19.6%	203	189	7.4%
ARSON	1	3	-66.7%	5	-80.0%	14	17	-17.6%
TOTALS	486	418	16.3%	434	12.0%	1991	1722	15.6%
VIOLENT PROPERTY	112 374	86 332	30.2% 12.7%	81 353	38.3% 5.9%	432 1559	357 1365	21.0% 14.2%

<b>Freedom Division (27)</b>								
	<u>Current month</u>	<u>Previous Month</u>	<u>Percent Change</u>	<u>Same Month Last Year</u>	<u>Percent Change</u>	<u>Current Year-to-Date</u>	<u>Past Year-to-Date</u>	<u>Percent Change</u>
MURDER & NON-NEGLIGENT MANSLAUGHTER	0	1	-100.0%	0	NA	2	4	-50.0%
RAPE	6	1	500.0%	1	500.0%	12	8	50.0%
ROBBERY	22	22	0.0%	25	-12.0%	107	105	1.9%
ARMED	21	19	10.5%	16	31.3%	89	88	1.1%
STRONG-ARM	1	3	-66.7%	9	-88.9%	18	17	5.9%
AGGRAVATED ASSAULT	52	28	85.7%	27	92.6%	160	136	17.6%
BURGLARY	78	66	18.2%	115	-32.2%	412	496	-16.9%
RESIDENTIAL	56	48	16.7%	73	-23.3%	310	323	-4.0%
COMMERCIAL	22	18	22.2%	42	-47.6%	102	173	-41.0%
LARCENY	220	226	-2.7%	234	-6.0%	1059	1127	-6.0%
FROM AUTO	145	133	9.0%	105	38.1%	618	598	3.3%
BICYCLE	1	0	NA	4		2	6	-66.7%
SHOPLIFTING	10	18	-44.4%	26	-61.5%	80	88	-9.1%
OTHERS	64	75	-14.7%	99	-35.4%	359	435	-17.5%
VEHICLE THEFT	47	37	27.0%	48	-2.1%	226	234	-3.4%
ARSON	0	1	-100.0%	6	-100.0%	9	16	-43.8%
TOTALS	425	382	11.3%	456	-6.8%	1987	2126	-6.5%
VIOLENT PROPERTY	80 345	52 330	53.8% 4.5%	53 403	50.9% -14.4%	281 1706	253 1873	11.1% -8.9%



**Central Service Area:****May, 2008**

<b>Central Division (01)</b>								
	<u>Current</u> <u>month</u>	<u>Previous</u> <u>Month</u>	<u>Percent</u> <u>Change</u>	<u>Same Month</u> <u>Last Year</u>	<u>Percent</u> <u>Change</u>	<u>Current Year-</u> <u>to-Date</u>	<u>Past Year-</u> <u>to-Date</u>	<u>Percent</u> <u>Change</u>
MURDER & NON-NEGLIGENT MANSLAUGHTER	1	0	NA	0	NA	1	1	0.0%
RAPE	2	2	0.0%	0	NA	7	3	133.3%
ROBBERY	14	4	250.0%	17	-17.6%	45	48	-6.3%
ARMED	9	2	350.0%	12	-25.0%	27	29	-6.9%
STRONG-ARM	5	2	150.0%	5	0.0%	18	19	-5.3%
AGGRAVATED ASSAULT	7	4	75.0%	15	-53.3%	50	64	-21.9%
BURGLARY	26	28	-7.1%	34	-23.5%	122	114	7.0%
RESIDENTIAL	10	11	-9.1%	13	-23.1%	50	49	2.0%
COMMERCIAL	16	17	-5.9%	21	-23.8%	72	65	10.8%
LARCENY	195	259	-24.7%	184	6.0%	939	859	9.3%
FROM AUTO	121	157	-22.9%	106	14.2%	531	428	24.1%
BICYCLE	0	2	-100.0%	0	NA	4	5	-20.0%
SHOPLIFTING	13	16	-18.8%	7	85.7%	70	57	22.8%
OTHERS	61	84	-27.4%	71	-14.1%	334	369	-9.5%
VEHICLE THEFT	28	19	47.4%	22	27.3%	92	90	2.2%
ARSON	1	0	NA	1	0.0%	2	3	-33.3%
TOTALS	274	316	-13.3%	273	0.4%	1258	1182	6.4%
VIOLENT PROPERTY	24 250	10 306	140.0% -18.3%	32 241	-25.0% 3.7%	103 1155	116 1066	-11.2% 8.3%

**Year-to-Date Index Crimes by Service Area: May, 2008**

Index Offenses	East Service Area Totals			North Service Area Totals			Southeast Service Area Totals		
	Current Year- to-Date	Past Year- to-Date	Percent Change	Current Year- to-Date	Past Year- to-Date	Percent Change	Current Year- to-Date	Past Year- to-Date	Percent Change
MURDER & NON-NEGLIGENT MANSLAUGHTER	5	10	-50.0%	8	2	300.0%	7	2	250.0%
RAPE	17	18	-5.6%	15	21	-28.6%	14	17	-17.6%
ROBBERY	271	274	-1.1%	139	105	32.4%	176	155	13.5%
ARMED	236	226	4.4%	117	91	28.6%	151	120	25.8%
STRONG-ARM	35	48	-27.1%	22	14	57.1%	25	35	-28.6%
AGGRAVATED ASSAULT	281	272	3.3%	204	161	26.7%	185	179	3.4%
BURGLARY	813	731	11.2%	1136	984	15.4%	664	676	-1.8%
RESIDENTIAL	567	543	4.4%	893	739	20.8%	561	538	4.3%
COMMERCIAL	246	188	30.9%	243	245	-0.8%	103	138	-25.4%
LARCENY	1719	1478	16.3%	2580	2203	17.1%	1451	1368	6.1%
FROM AUTO	932	748	24.6%	1557	1224	27.2%	811	673	20.5%
BICYCLE	19	13	46.2%	5	10	-50.0%	19	25	-24.0%
SHOPLIFTING	245	150	63.3%	332	218	52.3%	151	114	32.5%
OTHERS	523	567	-7.8%	686	751	-8.7%	470	556	-15.5%
VEHICLE THEFT	457	419	9.1%	378	336	12.5%	361	347	4.0%
ARSON	20	19	5.3%	19	29	-34.5%	20	13	53.8%
TOTALS	3583	3221	11.2%	4479	3841	16.6%	2878	2757	4.4%
VIOLENT	574	574	0.0%	366	289	26.6%	382	353	8.2%
PROPERTY	3009	2647	13.7%	4113	3552	15.8%	2496	2404	3.8%

**Year-to-Date Index Crimes by Service Area: May, 2008**

Index Offenses	South Service Area Totals			Southwest Service Area Totals			West Service Area Totals		
	<u>Current Year- to-Date</u>	<u>Past Year- to-Date</u>	<u>Percent Change</u>	<u>Current Year- to-Date</u>	<u>Past Year- to-Date</u>	<u>Percent Change</u>	<u>Current Year- to-Date</u>	<u>Past Year- to-Date</u>	<u>Percent Change</u>
MURDER & NON-NEGLIGENT MANSLAUGHTER	0	3	-100.0%	10	3	233.3%	6	11	-45.5%
RAPE	11	6	83.3%	20	24	-16.7%	24	19	26.3%
ROBBERY	81	63	28.6%	233	224	4.0%	251	224	12.1%
ARMED	58	39	48.7%	192	179	7.3%	207	182	13.7%
STRONG-ARM	23	24	-4.2%	41	45	-8.9%	44	42	4.8%
AGGRAVATED ASSAULT	119	89	33.7%	292	326	-10.4%	432	356	21.3%
BURGLARY	604	614	-1.6%	784	810	-3.2%	829	889	-6.7%
RESIDENTIAL	474	383	23.8%	596	481	23.9%	590	566	4.2%
COMMERCIAL	130	231	-43.7%	188	329	-42.9%	239	323	-26.0%
LARCENY	2323	1849	25.6%	2516	2268	10.9%	1984	1893	4.8%
FROM AUTO	1519	996	52.5%	1544	1261	22.4%	1061	922	15.1%
BICYCLE	16	10	60.0%	10	11	-9.1%	11	9	22.2%
SHOPLIFTING	165	155	6.5%	231	243	-4.9%	154	155	-0.6%
OTHERS	623	688	-9.4%	731	753	-2.9%	758	807	-6.1%
VEHICLE THEFT	177	185	-4.3%	419	378	10.8%	429	423	1.4%
ARSON	13	18	-27.8%	34	39	-12.8%	23	33	-30.3%
TOTALS	3328	2827	17.7%	4308	4072	5.8%	3978	3848	3.4%
VIOLENT PROPERTY	211 3117	161 2666	31.1% 16.9%	555 3753	577 3495	-3.8% 7.4%	713 3265	610 3238	16.9% 0.8%

**Year-to-Date Index Crimes by Service Area: May, 2008**

Index Offenses	Central Service Area Totals		
	<u>Current Year- to-Date</u>	<u>Past Year- to-Date</u>	<u>Percent Change</u>
MURDER & NON-NEGLIGENT MANSLAUGHTER	1	1	0.0%
RAPE	7	3	133.3%
ROBBERY	45	48	-6.3%
ARMED	27	29	-6.9%
STRONG-ARM	18	19	-5.3%
AGGRAVATED ASSAULT	50	64	-21.9%
BURGLARY	122	114	7.0%
RESIDENTIAL	50	49	2.0%
COMMERCIAL	72	65	10.8%
LARCENY	939	859	9.3%
FROM AUTO	531	428	24.1%
BICYCLE	4	5	-20.0%
SHOPLIFTING	70	57	22.8%
OTHERS	334	369	-9.5%
VEHICLE THEFT	92	90	2.2%
ARSON	2	3	-33.3%
TOTALS	1258	1182	6.4%
VIOLENT PROPERTY	103 1155	116 1066	-11.2% 8.3%

**Arrests by Charlotte-Mecklenburg Police Department**  
**Year-To-Date: 2007-2008**  
**(Through May)**

CATEGORY	ADULTS (AGE 18 & OLDER):			JUVENILES ( UNDER 18):			TOTAL ARRESTS:		
	2007 Y-T-D	2008 Y-T-D	% CHANGE	2007 Y-T-D	2008 Y-T-D	% CHANGE	2007 Y-T-D	2008 Y-T-D	% CHANGE
Murder/Non-Negligent Manslaughter	22	7	-68.2%	1	0	-100.0%	23	7	-69.6%
Negligent & Vehicular Manslaughter	0	1	NA	0	0	NA	0	1	NA
Rape	6	6	0.0%	2	2	0.0%	8	8	0.0%
Robbery	146	152	4.1%	67	42	-37.3%	213	194	-8.9%
Aggravated Assault	635	589	-7.2%	112	85	-24.1%	747	674	-9.8%
Burglary	265	274	3.4%	144	180	25.0%	409	454	11.0%
Larceny	600	747	24.5%	210	275	31.0%	810	1022	26.2%
Vehicle Theft	27	52	92.6%	54	51	-5.6%	81	103	27.2%
Non-Aggravated Assault	799	843	5.5%	332	378	13.9%	1131	1221	8.0%
Arson	6	6	0.0%	7	15	114.3%	13	21	61.5%
Forgery/Counterfeit	47	54	14.9%	0	1	NA	47	55	17.0%
Fraud	177	200	13.0%	1	6	500.0%	178	206	15.7%
Embezzlement	39	55	41.0%	3	3	0.0%	42	58	38.1%
Stolen Property	206	210	1.9%	42	51	21.4%	248	261	5.2%
Vandalism	110	85	-22.7%	90	84	-6.7%	200	169	-15.5%
Weapons	364	354	-2.7%	22	82	272.7%	386	436	13.0%
Prostitution	44	53	20.5%	0	2	NA	44	55	25.0%
Sex Offenses	72	55	-23.6%	7	4	-42.9%	79	59	-25.3%
Drugs	1337	1593	19.1%	178	193	8.4%	1515	1786	17.9%
Gambling	0	3	NA	0	0	NA	0	3	NA
Offenses vs. Family	0	2	NA	0	0	NA	0	2	NA
DUI	794	1005	26.6%	2	2	0.0%	796	1007	26.5%
Liquor	88	95	8.0%	7	21	200.0%	95	116	22.1%
Disorder.Conduct	263	287	9.1%	156	166	6.4%	419	453	8.1%
Other Non-Traffic	3121	3247	4.0%	376	353	-6.1%	3497	3600	2.9%
<b>VIOLENT INDEX<sup>1</sup></b>	809	754	-6.8%	182	129	-29.1%	991	883	-10.9%
<b>PROPERTY INDEX<sup>2</sup></b>	898	1079	20.2%	415	521	25.5%	1313	1600	21.9%
<b>INDEX SUBTOTAL</b>	1707	1833	7.4%	597	650	8.9%	2304	2483	7.8%
<b>PART 2 SUBTOTAL<sup>3</sup></b>	7461	8142	9.1%	1216	1346	10.7%	8677	9488	9.3%
<b>TOTAL</b>	9168	9975	8.8%	1813	1996	10.1%	10981	11971	9.0%

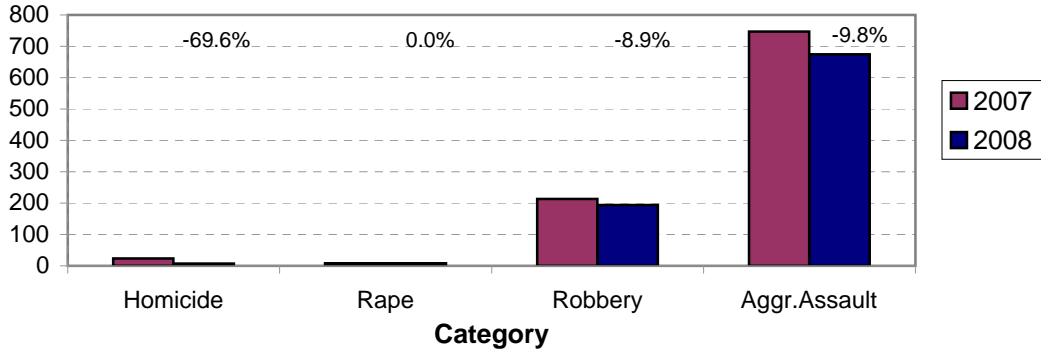
Note: Totals under 18 for 2007 and 2008 were adjusted in April, 2008, to include some juvenile arrests that were not originally counted in the arrest data due to an error in the computer program.

<sup>1</sup>Violent Index includes murder and non-negligent manslaughter, rape, robbery, and aggravated assault.

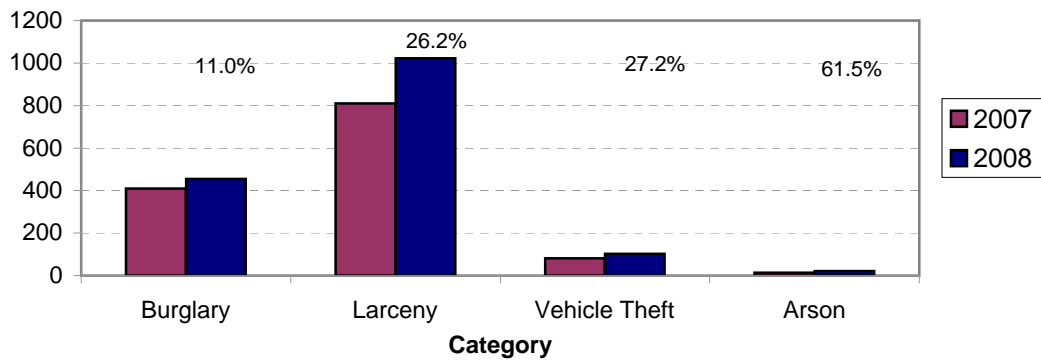
<sup>2</sup>Property Index includes burglary, larceny, vehicle theft, and arson.

<sup>3</sup>Part 2 crimes include crime categories not counted in the Index totals.

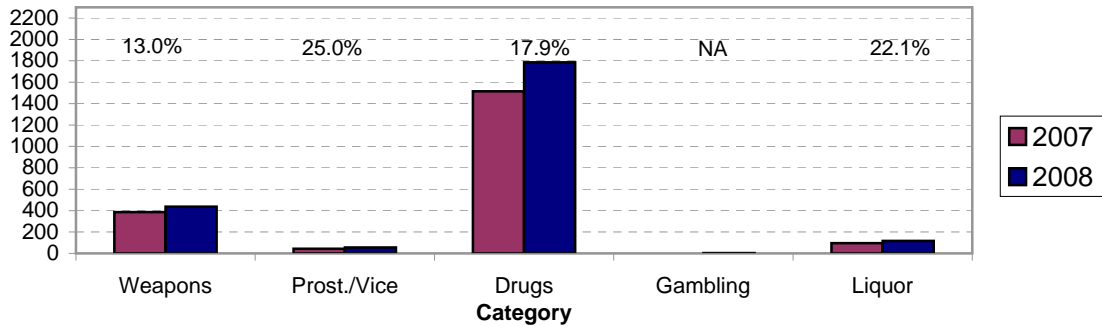
**Violent Index Arrests Year-to-Date  
Charlotte-Mecklenburg Police Department: 2007-2008  
(Through May)**



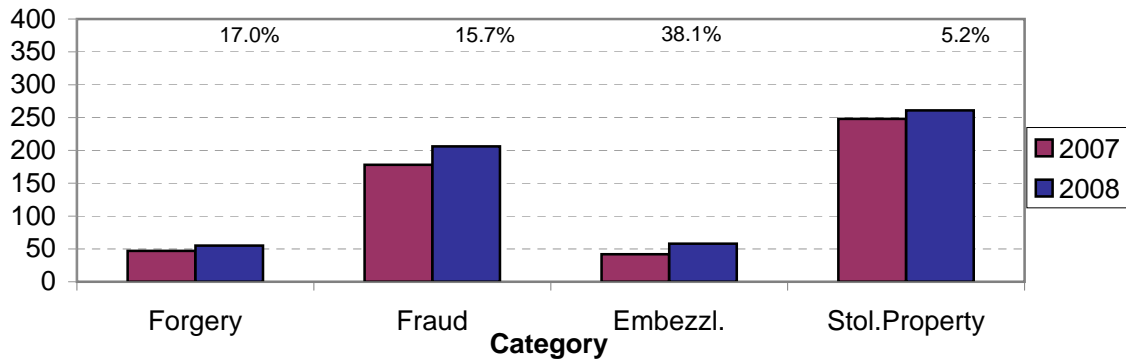
**Property Index Arrests Year-to-Date  
Charlotte-Mecklenburg Police Department: 2007-2008  
(Through May)**



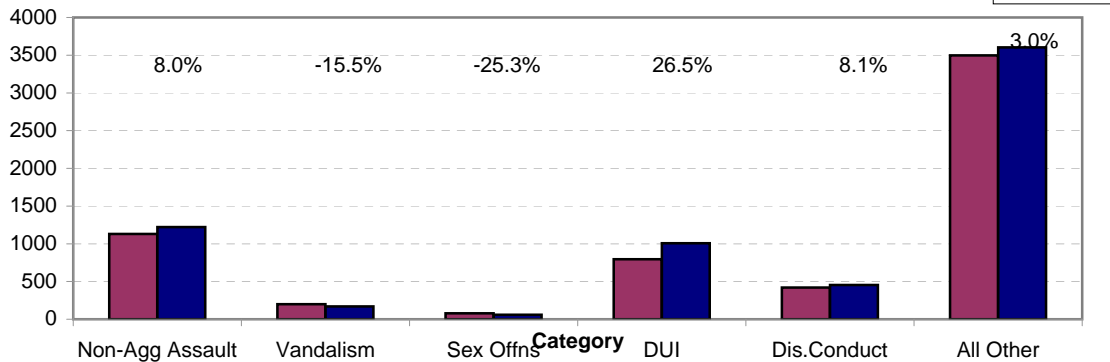
**Arrests for Vice/CCW/Drugs/Etc. Year-to-Date  
Charlotte-Mecklenburg Police Department: 2007-2008  
(Through May)**



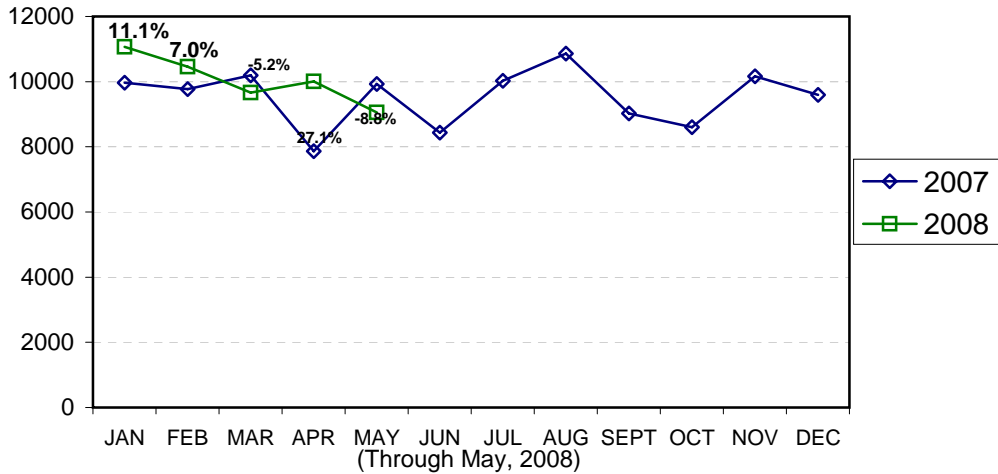
**Arrests for Property/White Collar Crime Year-to-Date  
Charlotte-Mecklenburg Police Department: 2007-2008  
(Through May)**



**Arrests for Other Categories Year-to-Date  
Charlotte-Mecklenburg Police Department: 2007-2008  
(Through May)**

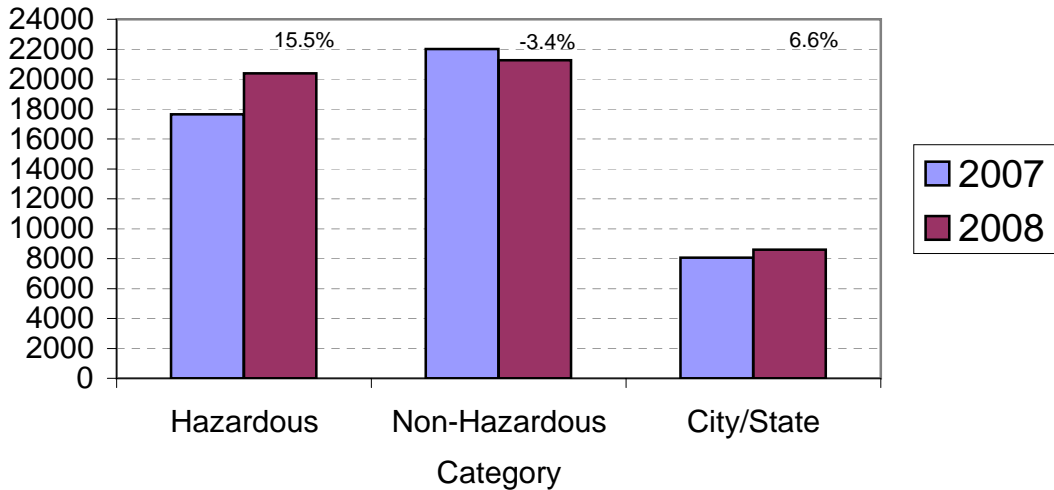


### Total Citation Enforcement by Month Charlotte-Mecklenburg Police Dept.: 2007-2008



(Includes both traffic and non traffic citations; percentages are current month compared to same month in previous year. Monthly totals may be affected by data entry delays or copies not being routed to the Records Division for talling )

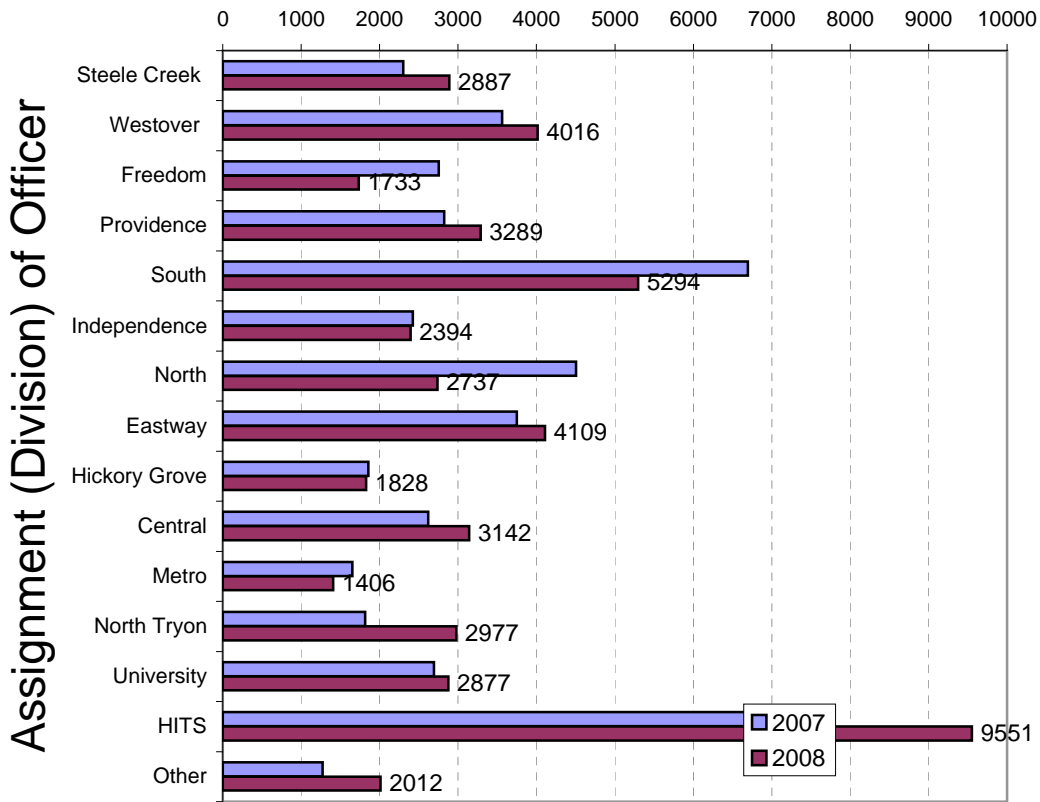
### CMPD Citation Enforcement by Category Year-to-Date, 2007-2008 (Through May, 2008)





**Citations Issued Year-to-Date by CMPD Divisions  
2008**

**(Through May, 2008)**



Note: Officers' division assignments for Jan 1-12, 2007, were based on the 12 division configuration. Totals may be affected by data entry delays or copies not being routed to the Records Division for tallying.

**Citations Reported by the Charlotte Mecklenburg Police Year-to-Date  
(Through May, 2008)**

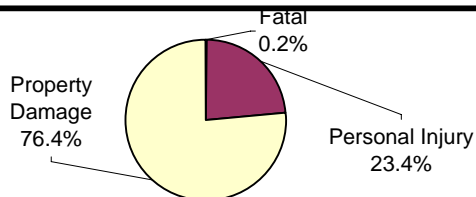
	2007	2008	% Change
Hazardous	17,647	20,385	15.5%
Non-Hazardous	22,005	21,265	-3.4%
Other City/State Statute/Ordinance	8,068	8,602	6.6%
<b>Total</b>	<b>47,720</b>	<b>50,252</b>	<b>5.3%</b>

**Traffic Collision Reports Recorded by  
Charlotte-Mecklenburg Police Department  
2008 Year-to-Date (See note)  
(Through May)**

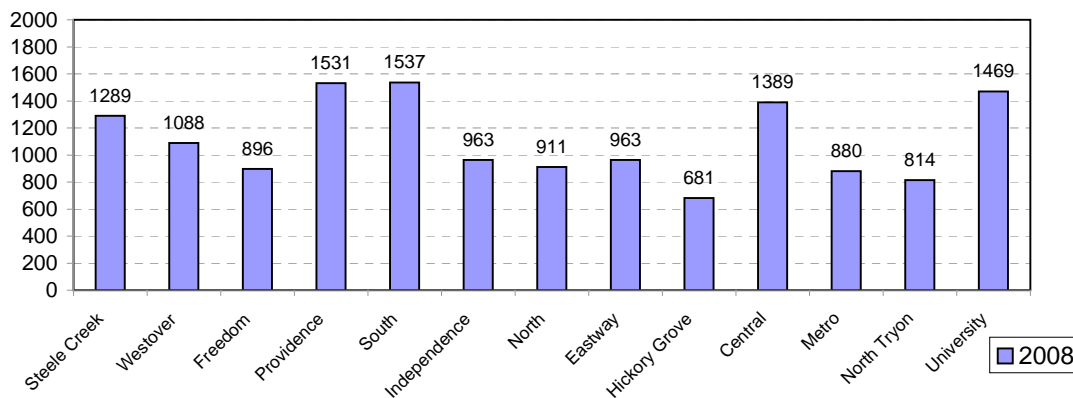
<u>Type</u>	<u>2008</u>
Fatal Collision Reports	26
Vehicle Occupants Killed	19
Pedestrians Killed	7
Personal Injury Collisions	3372
Property Damage Collisions	11013
Total Collision Reports	14411

Note: Comparisons with previous years cannot be provided due to changes related to the adoption of the NC DMV's TraCs reporting system in the third quarter of 2007. Minor traffic incidents not resulting in a collision report are not included.

**Traffic Collision Reports by Type  
Charlotte-Mecklenburg Police Department:  
2008 Year-to-Date  
(Through May)**



**Traffic Collision Reports - Charlotte-Mecklenburg Police Dept.  
Year-to-Date By Location (Division) : 2008**



**CITIZEN-INITIATED CALLS FOR SERVICE<sup>1</sup> BY TYPE  
CHARLOTTE-MECKLENBURG POLICE DEPARTMENT**

<u>Type of Call<sup>2</sup></u>	<u>2007 Year-to-Date<sup>5</sup></u>	<u>2008 Year-to-Date<sup>5</sup></u>	<u>Year-to-Date</u>
	<u>Through May</u>	<u>Through May</u>	<u>% Change</u>
ABC RELATED	830	813	-2.0%
ACCIDENT	15319	14417	-5.9%
ALARM	14938	16226	8.6%
ANIMAL CONTROL <sup>3</sup>	114	157	37.7%
ASSAULT	1925	1884	-2.1%
ASSAULT WITH DEADLY WEAPON	909	964	6.1%
ASSIST OTHER AGENCY	3669	3818	4.1%
BOMB THREAT	44	33	-25.0%
BREAK/ENTER	7782	8354	7.4%
CDCP CLINICIAN VISIT <sup>4</sup>	624	758	21.5%
COMMUNICATING THREATS	1423	1369	-3.8%
COUNTY SECURITY <sup>3</sup>	3	1	-66.7%
CRIMINAL INTELLIGENCE	7	3	-57.1%
CRITICAL INCIDENT <sup>4</sup>	3	5	66.7%
DAMAGE TO PROPERTY	3509	3359	-4.3%
DEATH	98	86	-12.2%
DISTURBANCE	10983	11446	4.2%
DOMESTIC INCIDENT	14055	13506	-3.9%
DRUG RELATED	1836	1715	-6.6%
EXTORTION/BLACKMAIL <sup>4</sup>	6	5	-16.7%
FIGHT	1254	1338	6.7%
FIRE CASE	47	34	-27.7%
FRAUD/FORGERY	1716	1875	9.3%
GAMBLING	6	6	0.0%
HARASSMENT	843	815	-3.3%
HIT AND RUN	3307	3080	-6.9%
JUVENILE RELATED	981	1085	10.6%
KIDNAPPING	91	79	-13.2%
LAKE ENFORCEMENT	124	31	-75.0%
LARCENY	12839	14690	14.4%
LOITERING	2257	2516	11.5%
MISSING PERSON	3055	2704	-11.5%
NOISE COMPLAINT	5932	5683	-4.2%
OFFENSE AGAINST FAMILY	14	2	-85.7%
OFFICER CALLED IN	14	1	-92.9%
OVERDOSE	161	201	24.8%
PORNOGRAPHY	11	5	-54.5%
PROPERTY	3276	2693	-17.8%
PROSTITUTION	437	348	-20.4%
PUBLIC SERVICE	6482	6457	-0.4%
QUALITY OF LIFE	282	240	-14.9%
ROBBERY	1230	1303	5.9%
SEX CRIME	461	465	0.9%
SPECIAL SERVICE REQUEST <sup>4</sup>	2	1	-50.0%
SUICIDE	569	2432	327.4%
SUSPICIOUS PERSON	8239	7341	-10.9%
TRAFFIC RELATED	4674	5424	16.0%
TRESPASS	1801	1569	-12.9%
VEHICLE RELATED	14093	14191	0.7%
VIOLENT CRIMES TASK FORCE <sup>4</sup>	1	1	NA
WARRANT RELATED	1183	1218	3.0%
WEAPON RELATED	3600	3441	-4.4%
ZONE CHECK-ADVISED EVENT <sup>4</sup>	5	10	100.0%
911 HANG UP / CALLBACK	5339	4855	-9.1%
<b>TOTAL</b>	<b>162403</b>	<b>165053</b>	<b>1.6%</b>

<sup>1</sup>These totals exclude duplicate and cancelled calls for service; they include calls handled by the Crime Reporting Unit as well as by division field officers, detectives and related CMPD staff.

<sup>2</sup>The type of call is determined from the 911 call, unless updated by an officer assigned to respond.

<sup>3</sup>In this summary, calls to Animal Control, Mecklenburg County Security, or Davidson Police are not included unless they also involve the dispatching of C-MPD field officers or detectives.

<sup>4</sup>This call type may not have been in use during part or all of the previous year or current year.

<sup>5</sup>Call totals may not match previously published totals due to adjustments for changes in call codes and procedures.

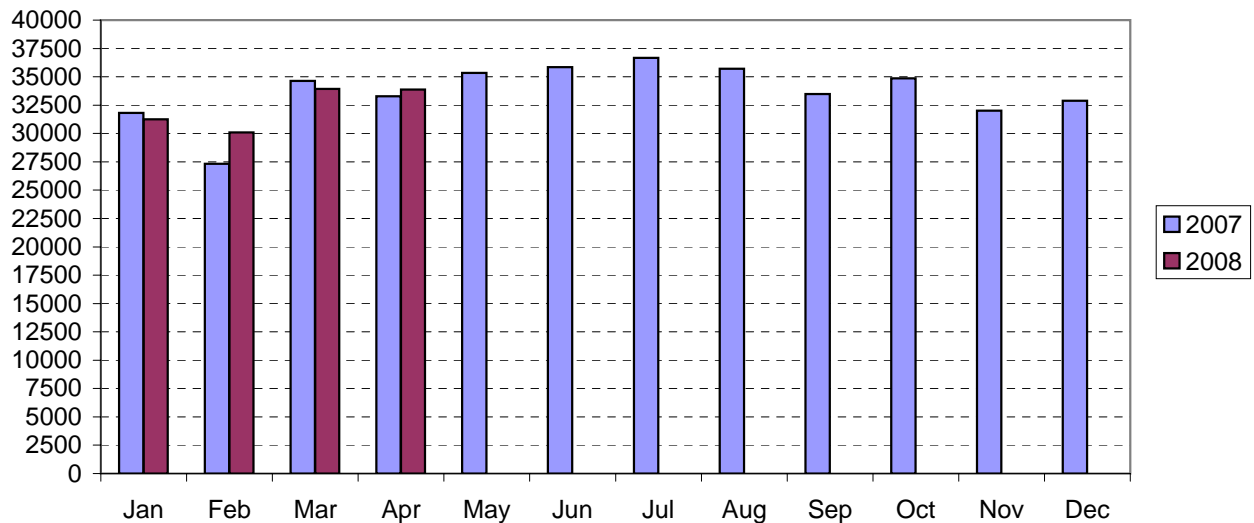
**CITIZEN-INITIATED CALLS FOR SERVICE BY ORIGINATING CMPD DIVISION<sup>1,2</sup>**  
 (Based on District of Call Origination, Not on Assigned District of Responding Units)

<u>District</u>	<u>2007 Year-to-Date Through May</u>	<u>2008 Year-to-Date Through May</u>	<u>Year-to-Date % Change</u>
Central-01	9363	9691	3.5%
Metro-02	14913	14723	-1.3%
Eastway-06	12608	13158	4.4%
North Tryon-07	11735	12296	4.8%
North-11 (C1)	13240	13757	3.9%
Hickory Grove-12	10207	10033	-1.7%
University-14	13085	14232	8.8%
Providence-16	12803	13567	6.0%
Independence-17	11777	11990	1.8%
Steele Creek-21	13260	13508	1.9%
South-22	11380	12185	7.1%
Westover-26	13844	12948	-6.5%
Freedom-27	12583	12766	1.5%
<b>Total<sup>2</sup></b>	<b>160798</b>	<b>164854</b>	<b>2.5%</b>

<sup>1</sup>These totals exclude duplicate and cancelled calls for service; they include calls handled by the Crime Reporting Unit as well as by division field officers, detectives and other CMPD staff.

<sup>2</sup>Calls where the location could not be assigned to one of the divisions are not included in this chart.

**Citizen-Initiated Calls for Service<sup>1</sup> by Month**  
**Charlotte-Mecklenburg Police Department: 2007-2008**



<sup>1</sup>These totals exclude duplicate and cancelled calls for service; they include calls handled by the Crime Reporting Unit as well as by division field officers, detectives and other CMPD staff.

## Uniform Crime Reporting Procedures

The Charlotte-Mecklenburg Police Department reports offense and arrest statistics in accordance with standard Uniform Crime Reporting (UCR) guidelines. UCR policy states that any adjustments to previous months can be made on the current month's report:

...In tabulating crime counts, an agency may find that offense totals for past months require adjustments due to developments in the investigation or other handling of the matter. It may be necessary to adjust totals reported to UCR for the past month or prior months. Needed adjustments can be made on the current month's report and do not affect the reliability of the figures in that such adjustments tend to equalize each other from month to month over a period of time.

- *Uniform Crime Reporting Handbook*, FBI, 1984, p. 42-43

We are required to report crime monthly to the UCR program, and we do therefore make an effort to process monthly changes in a timely manner. However, occasionally due to the review and processing required for reclassifying, unbounding or clearing cases, the current month's totals may reflect the processing of a backlog of these changes from previous months.

Users of the data are cautioned that conclusions about substantial changes in crime trends or in clearance rates based on only a single month's data or trend may reflect some of these adjustments. For this reason, in addition to the monthly and year-to-date trends on Page 1, the monthly report routinely includes a comparison for the previous 12 months (p. 4), as well as graphs that provide seasonal/monthly comparisons over a five-year period (p. 5-8).

### UCR Definitions and Terms:

**Index Crime:** the eight offenses that the national UCR program tracks on a yearly basis to gauge trends in the extent of crime, despite differences among state and local criminal statutes. These offenses were selected on the basis of several factors: seriousness, frequency of occurrence, pervasiveness in all geographic areas, and/or likelihood of being reported to law enforcement.

**Violent Index:** includes the offenses of murder/non-negligent manslaughter, rape, robbery, and aggravated assault

**Property Index:** includes the offenses of burglary, larceny, vehicle theft and arson

**Murder/non-negligent manslaughter:** the willful killing of one human being by another

**Justifiable Homicide:** limited by UCR to either a killing by a law enforcement officer in the line of duty or a killing by a citizen of a felon during the commission of a felony. If a homicide is determined to be "justifiable" by this definition, it is subtracted from the murder/non-negligent manslaughter category after investigation.

**Rape:** the carnal knowledge of a female forcibly and against her will [Note: This offense does not include other sex offenses or statutory (non-forcible) rape.]

**Robbery:** the taking or attempt to take anything of value from the care, custody, or control of a person or persons by force, threat of force or violence, or by putting the victim in fear.

**Aggravated assault:** an unlawful attack by one person on another for the purpose of inflicting severe or aggravated bodily injury; includes 1) all assaults in which a weapon of any type is used or is threatened to be used and/or 2) all assaults where serious injury occurs.

**Burglary:** the unlawful entry or attempted entry of a structure to commit a felony or a theft

**Larceny-Theft:** the unlawful taking (or attempt), carrying, leading, or riding away of property from the possession or constructive possession of another [Note: Larceny/theft of a motor vehicle is classed separately.]

Vehicle Theft: the theft or attempted theft of a motor vehicle (a self-propelled vehicle that runs on land and not on rails, excluding farm and construction equipment)

Arson: the willful or malicious burning or attempt to burn, with or without intent to defraud, a structure, motor vehicle, personal property of another, etc.

Hierarchy rule: For cases involving multiple-offenses, the incident is classified and counted based on the highest offense on a hierarchy of crimes established by UCR. For example, for an incident involving a rape and a burglary, the incident would be counted in the rape category because rape is higher than burglary on the hierarchy.

Clearance: A case is considered cleared when either at least one arrest is made for the offense or when one offender's identity is established by investigation but the offender will not be arrested for reasons outside law enforcement control (offender dies, victim refuses to prosecute, district attorney declines prosecution, extradition is refused, etc.).

Unfounding: A case is "unfounded" and subtracted from the crime counts when investigation establishes that the incident did not actually occur or that the actions within the incident are not criminal based on current law.

For additional information, please consult the *UCR Handbook* on the FBI website at <http://www.fbi.gov/ucr/ucr.htm>.

This report was compiled by the Research, Planning, and Analysis Division.

We make an effort to present the most accurate information available at the time this report is published. Please notify the Research, Planning, and Analysis office if you have any questions about the data in this report or about an error that was missed in proofing the report.

Veronica Sorban  
Ed Williams