



**CHARLOTTE-MECKLENBURG POLICE DEPARTMENT
MONTHLY SUMMARY REPORT
JUNE, 2008**

**Rodney Monroe
Chief of Police**

INDEX OFFENSES REPORTED TO CHARLOTTE-MECKLENBURG POLICE DEPARTMENT

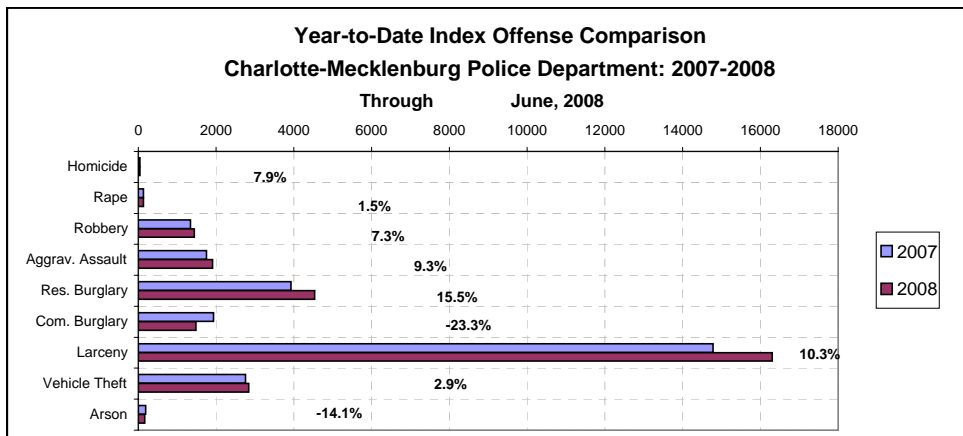
June, 2008 INDEX OFFENSES	# THIS MONTH	% OF ALL INDEX	# LAST MONTH	MONTHLY % CHANGE	SAME MONTH LAST YEAR	MONTHLY % CHANGE	THIS YEAR TO DATE	LAST YEAR TO DATE	ANNUAL % CHANGE
HOMICIDE (MURDER & NON-NEGLIGENT MANSLAUGHTER)*	5	0.1%	6	-16.7%	6	-16.7%	41	38	7.9%
RAPE TOTAL	27	0.5%	23	17.4%	22	22.7%	135	133	1.5%
ACTUAL	23	0.5%	22	4.5%	19	21.1%	122	127	-3.9%
ATTEMPT	4	0.1%	1	300.0%	3	33.3%	13	6	116.7%
ROBBERY TOTAL	246	4.9%	260	-5.4%	251	-2.0%	1442	1344	7.3%
ARMED	194	3.9%	217	-10.6%	220	-11.8%	1182	1086	8.8%
STRONG-ARM	52	1.0%	43	20.9%	31	67.7%	260	258	0.8%
AGGRAVATED ASSAULT TOTAL	343	6.8%	351	-2.3%	301	14.0%	1912	1749	9.3%
BURGLARY TOTAL	1059	21.1%	1098	-3.6%	1037	2.1%	6017	5857	2.7%
RESIDENTIAL	800	15.9%	823	-2.8%	625	28.0%	4536	3926	15.5%
COMMERCIAL	259	5.2%	275	-5.8%	412	-37.1%	1481	1931	-23.3%

FORCE	815	16.2%	874	-6.8%	812	0.4%	4847	4718	2.7%
NO FORCE	143	2.8%	130	10.0%	153	-6.5%	681	747	-8.8%
ATTEMPT	101	2.0%	94	7.4%	72	40.3%	489	392	24.7%
LARCENY TOTAL	2781	55.4%	2984	-6.8%	2861	-2.8%	16301	14780	10.3%
\$200 AND OVER	1503	29.9%	1568	-4.1%	1538	-2.3%	8543	7703	10.9%
\$50 TO \$200	476	9.5%	579	-17.8%	495	-3.8%	2834	2692	5.3%
UNDER \$50	802	16.0%	837	-4.2%	828	-3.1%	4924	4385	12.3%

FROM AUTO	1514	30.1%	1779	-14.9%	1634	-7.3%	9473	7886	20.1%
BICYCLE	22	0.4%	31	-29.0%	35	-37.1%	106	118	-10.2%
SHOPLIFTING	258	5.1%	280	-7.9%	233	10.7%	1608	1325	21.4%
OTHERS	987	19.7%	894	10.4%	959	2.9%	5114	5451	-6.2%
VEHICLE THEFT TOTAL	528	10.5%	461	14.5%	581	-9.1%	2842	2761	2.9%
ARSON TOTAL	33	0.7%	27	22.2%	37	-10.8%	164	191	-14.1%
TOTALS	5022	100.0%	5210	-3.6%	5096	-1.5%	28854	26853	7.5%
VIOLENT PROPERTY	621	12.4%	640	-3.0%	580	7.1%	3530	3264	8.1%
PROPERTY	4401	87.6%	4570	-3.7%	4516	-2.5%	25324	23589	7.4%

NOTE: These totals include offenses reported to the Charlotte-Mecklenburg Police Department in accordance with the Uniform Crime Reporting (UCR) Program. Because the data in this report is primarily based on the automated Records Management System, cases counted this month may include offenses from previous months/years that were reclassified after investigation.

*Year-to-date Homicide totals for 2008 reflect the reclassification of one case from 2007 to Justifiable Homicide in April, as well as 3 cases in 2008 that were reclassified and subtracted in February and June as Justifiable Homicide based on summary UCR rules (See the glossary at the end of this report for the UCR definition of justifiable homicide).

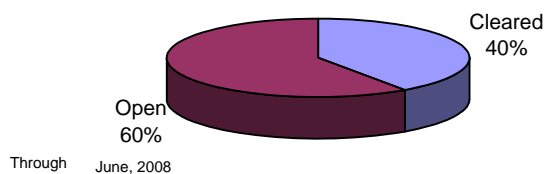


INDEX CLEARANCES REPORTED BY THE CHARLOTTE-MECKLENBURG POLICE DEPARTMENT

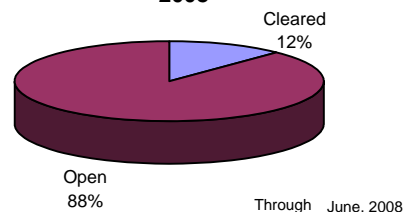
June, 2008 INDEX CLEARANCES	THIS MONTH:		LAST MONTH:		SAME MO. LAST YR:		THIS YEAR TO DATE:		LAST YEAR TO DATE:	
	NO.	%	NO.	%	NO.	%	NO.	%	NO.	%
MURDER & NON-NEGLIGENT MANSLAUGHTER ¹	-1	-20.0%	6	100.0%	3	50.0%	14	34.1%	21	55.3%
RAPE TOTAL	7	25.9%	10	43.5%	14	63.6%	85	63.0%	97	72.9%
ACTUAL	6	26.1%	10	45.5%	14	73.7%	78	63.9%	93	73.2%
ATTEMPT	1	25.0%	0	0.0%	0	0.0%	7	53.8%	4	66.7%
ROBBERY TOTAL	72	29.3%	51	19.6%	58	23.1%	398	27.6%	362	26.9%
ARMED	57	29.4%	43	19.8%	41	18.6%	331	28.0%	293	27.0%
STRONG-ARM	15	28.8%	43	100.0%	17	54.8%	102	39.2%	69	26.7%
AGGRAVATED ASSAULT TOTAL	134	39.1%	146	41.6%	131	43.5%	925	48.4%	808	46.2%
BURGLARY TOTAL	70	6.6%	97	8.8%	82	7.9%	474	7.9%	638	10.9%
RESIDENTIAL	59	7.4%	74	9.0%	51	8.2%	358	7.9%	416	10.6%
COMMERCIAL	11	4.2%	23	8.4%	31	7.5%	116	7.8%	222	11.5%
LARCENY TOTAL	356	12.8%	381	12.8%	291	10.2%	2222	13.6%	1684	11.4%
FROM AUTO	40	2.6%	34	1.9%	41	2.5%	224	2.4%	203	2.6%
BICYCLE	1	4.5%	3	9.7%	0	0.0%	6	5.7%	1	0.8%
SHOPLIFTING	172	66.7%	219	78.2%	125	53.6%	1167	72.6%	765	57.7%
OTHERS	143	14.5%	125	14.0%	125	13.0%	825	16.1%	715	13.1%
VEHICLE THEFT TOTAL	70	13.3%	45	9.8%	47	8.1%	344	12.1%	331	12.0%
ARSON TOTAL	7	21.2%	2	7.4%	4	10.8%	29	17.7%	28	14.7%
TOTALS	715	14.2%	738	14.2%	630	12.4%	4491	15.6%	3969	14.8%
VIOLENT	212	34.1%	213	33.3%	206	35.5%	1422	40.3%	1288	39.5%
PROPERTY	503	11.4%	525	11.5%	424	9.4%	3069	12.1%	2681	11.4%

¹NOTE : Clearances are reported in accordance with Uniform Crime Report guidelines. Since clearances are not counted for UCR until they are entered in the Records Management system, any delays in entry of the documentation may result in some clearances being reported later in succeeding months.

**Year-to-Date Violent Index Clearance Rate
Charlotte-Mecklenburg Police Department: 2008**

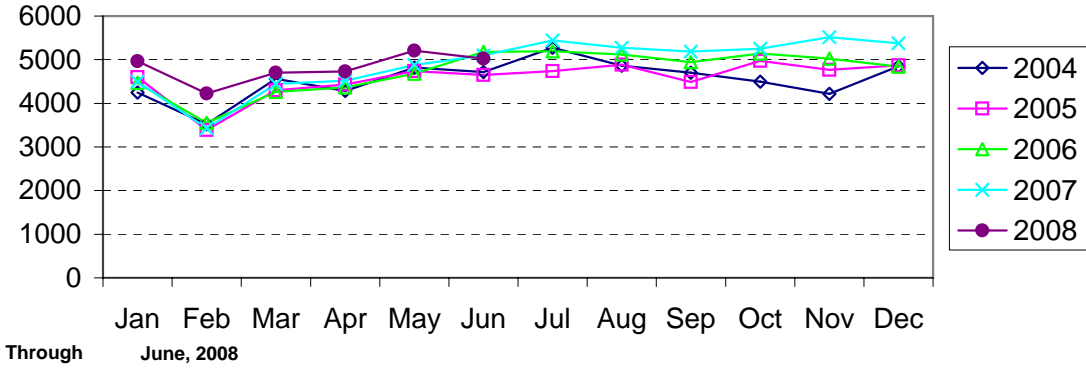


**Year-to-Date Property Index Clearance Rate
Charlotte-Mecklenburg Police Department:
2008**

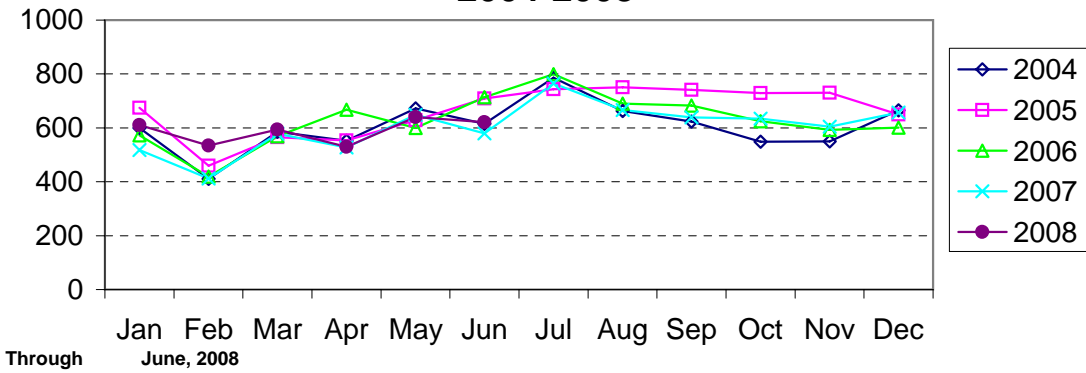


Clearance rates for crime reporting are calculated by dividing the number of crimes cleared during a designated time span by the number of crimes reported in the same period and converting the result to a percentage (multiplying by 100). Since cases from previous reporting periods can be cleared during the designated time span, the rate may be higher than 100%.

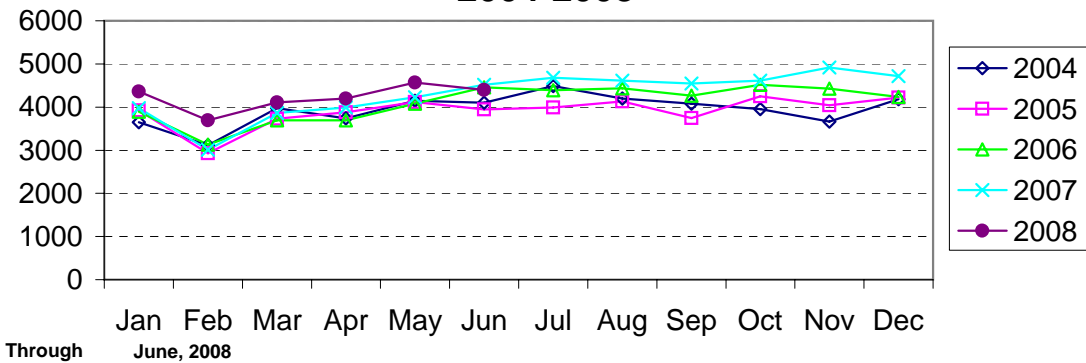
Index Offenses Reported by Month Charlotte-Mecklenburg Police Department: 2004-2008



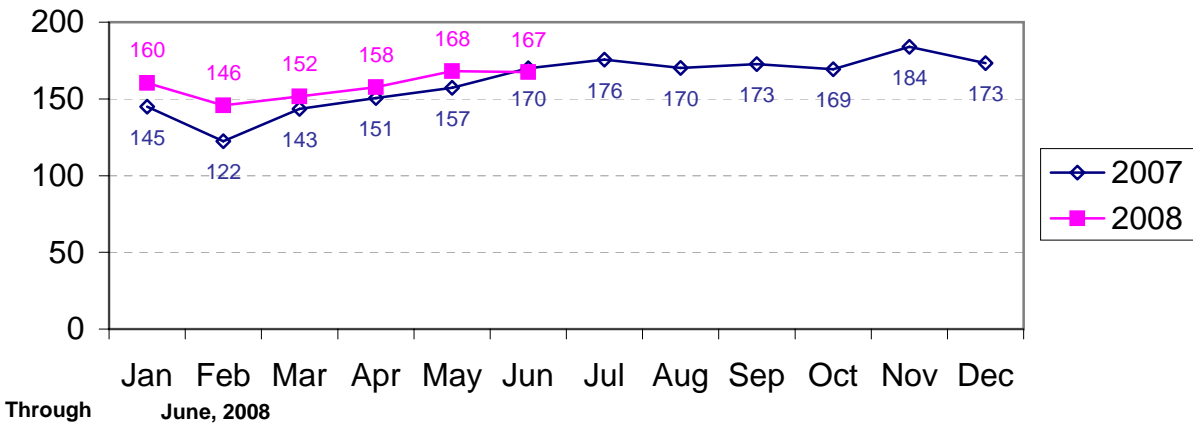
Violent Index Offenses Reported by Month Charlotte-Mecklenburg Police Department: 2004-2008



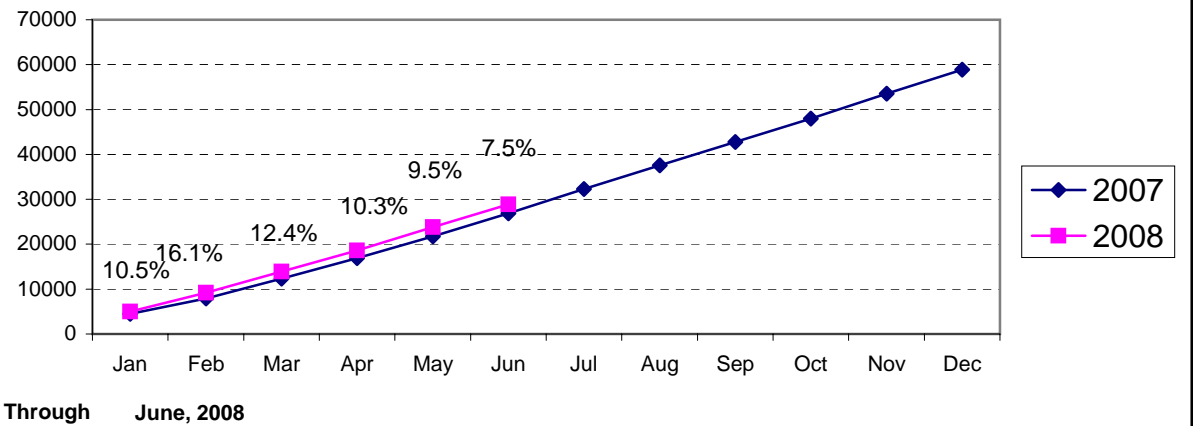
Property Index Offenses Reported by Month Charlotte-Mecklenburg Police Department: 2004-2008

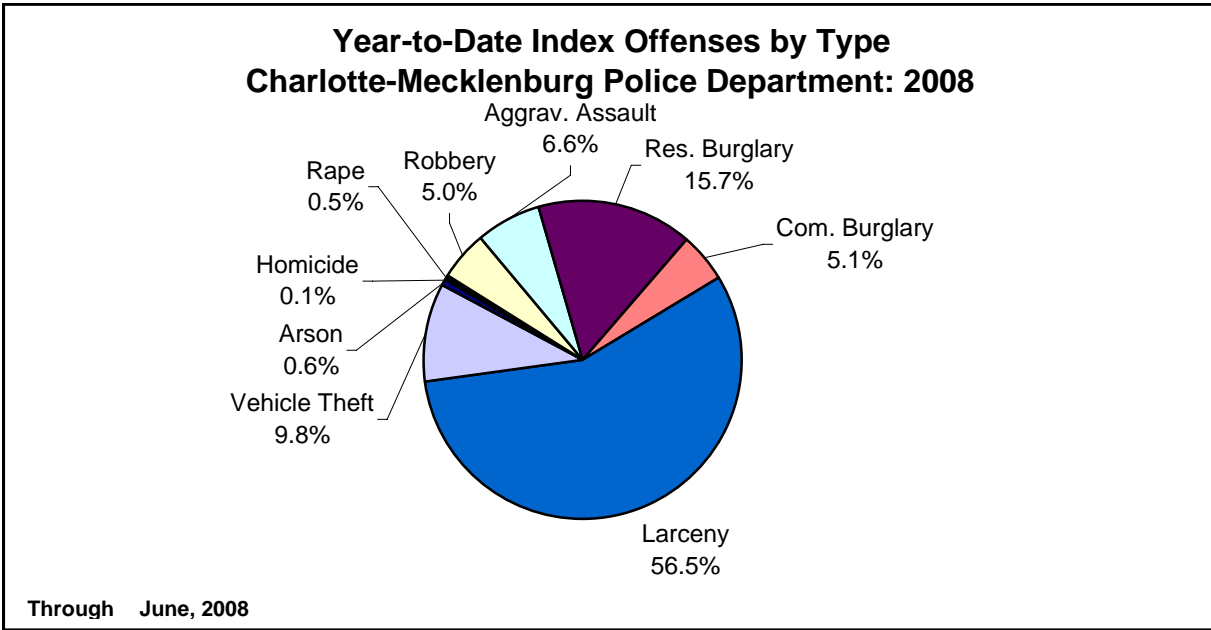
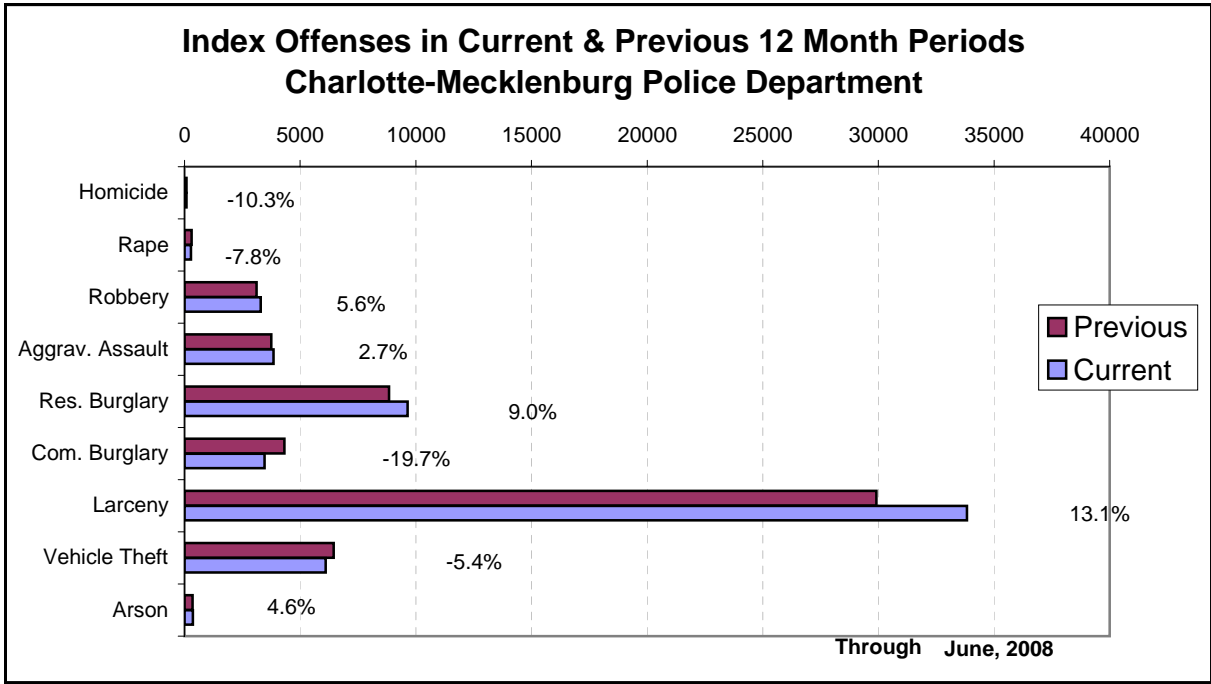


Index Offense Per Day Average by Month Charlotte-Mecklenburg Police Department: 2007-2008

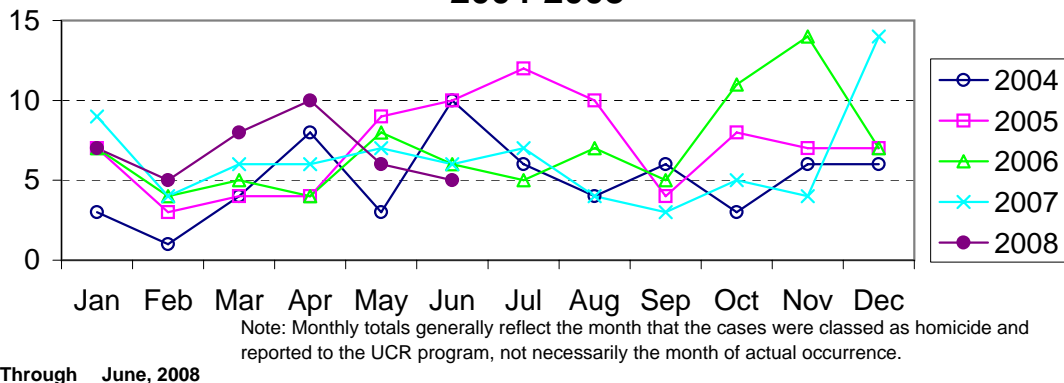


Index Offenses Year-to-Date Cumulative Totals Charlotte-Mecklenburg Police Department: 2007-2008

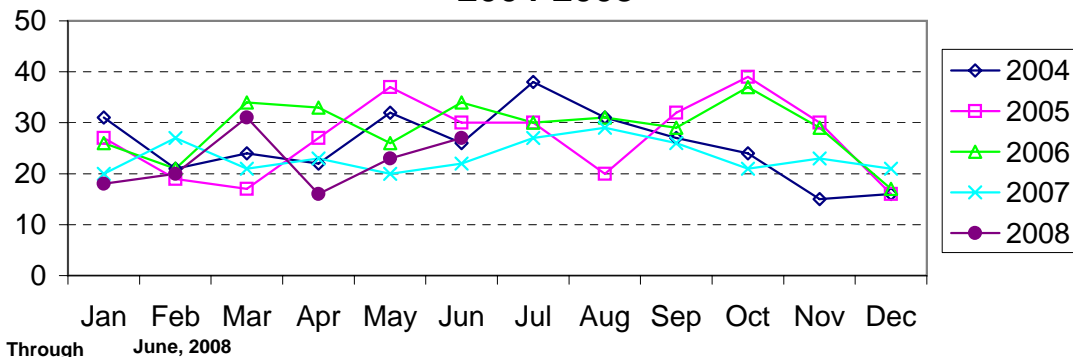




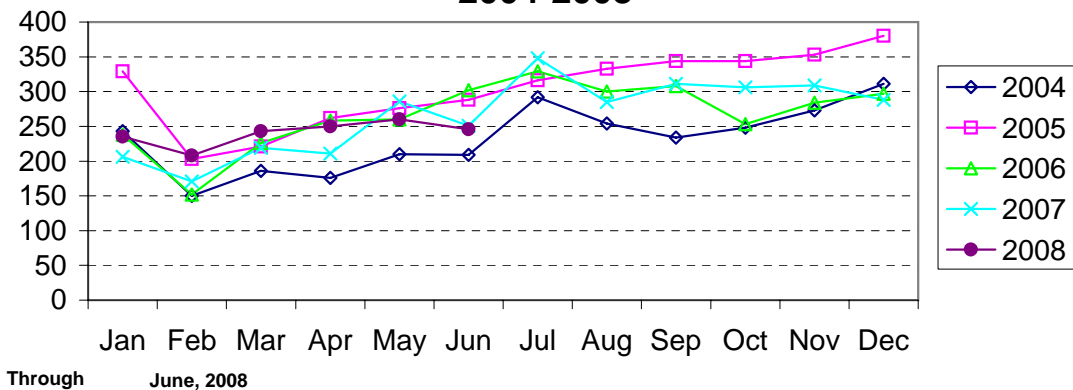
Homicide Reported by Month Charlotte-Mecklenburg Police Department: 2004-2008



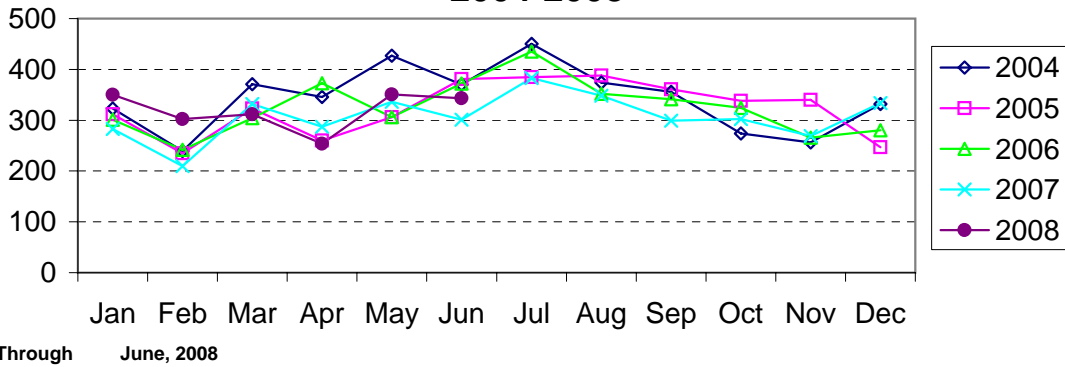
Rape Reported by Month Charlotte-Mecklenburg Police Department: 2004-2008



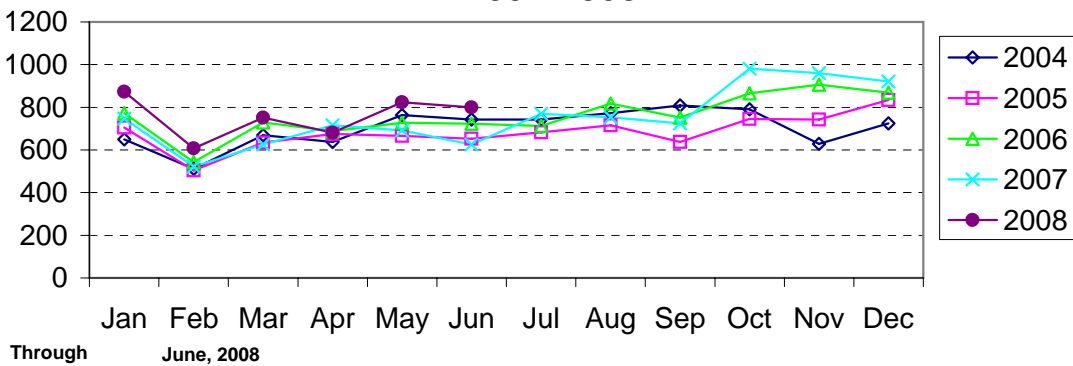
Robbery Reported by Month Charlotte-Mecklenburg Police Department: 2004-2008



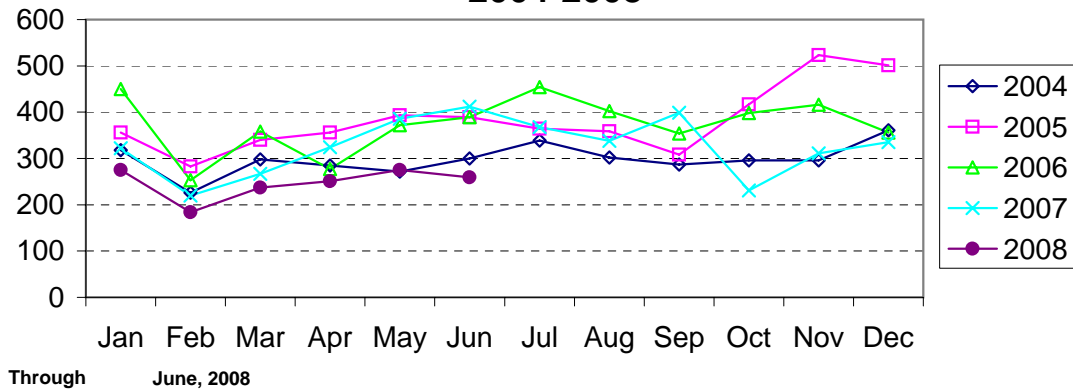
Aggravated Assault Reported by Month Charlotte-Mecklenburg Police Department: 2004-2008



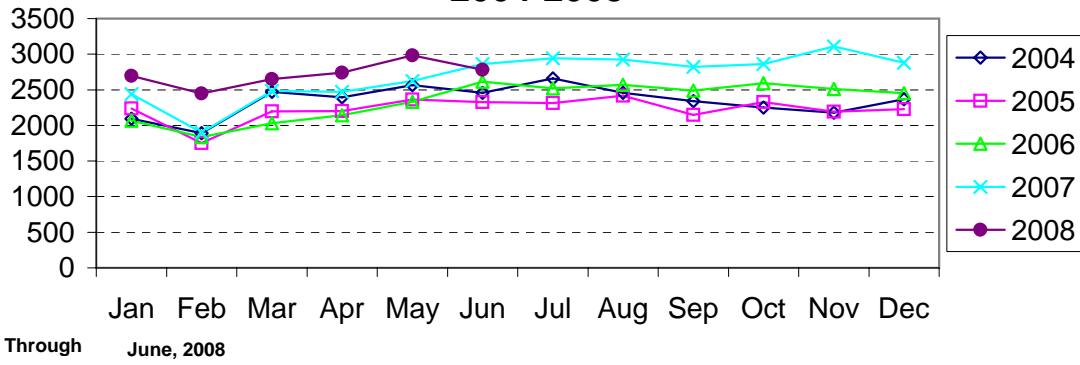
Residential Burglary Reported by Month Charlotte-Mecklenburg Police Department: 2004-2008



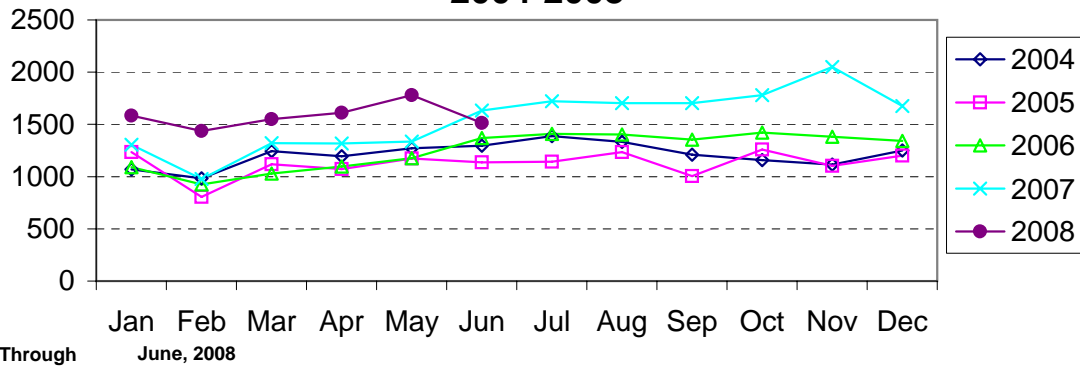
Commercial Burglary Reported by Month Charlotte-Mecklenburg Police Department: 2004-2008



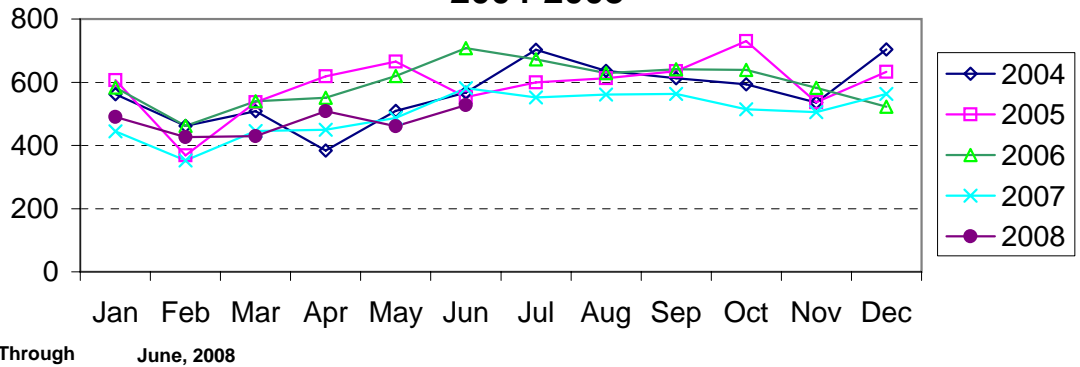
**Larceny Reported by Month
Charlotte-Mecklenburg Police Department:
2004-2008**



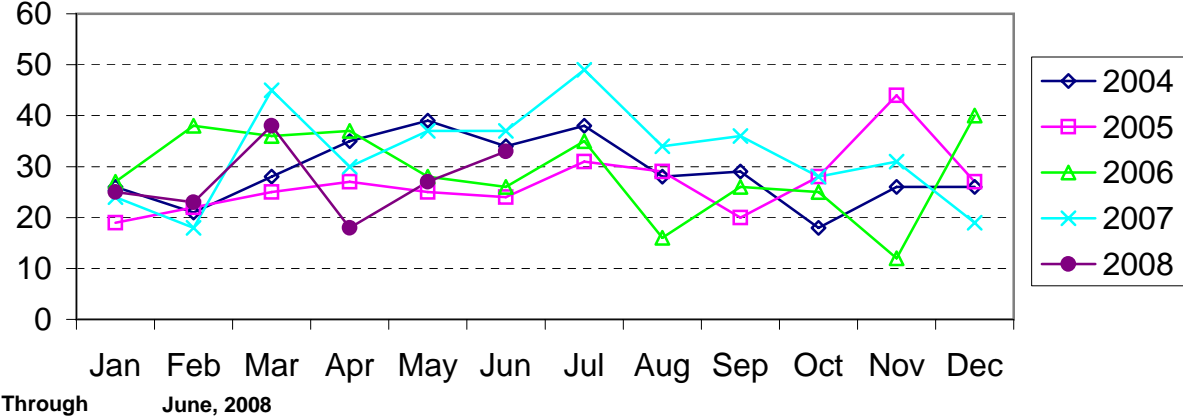
**Larceny from Vehicle Reported by Month
Charlotte-Mecklenburg Police Department:
2004-2008**



**Vehicle Theft Reported by Month
Charlotte-Mecklenburg Police Department:
2004-2008**



Arson Reported by Month Charlotte-Mecklenburg Police Department: 2004-2008



East Service Area: Index Offenses Reported By Division, June, 2008

Eastway Division (06)								
	<u>Current month</u>	<u>Previous Month</u>	<u>Percent Change</u>	<u>Same Month Last Year</u>	<u>Percent Change</u>	<u>Current Year-to-Date</u>	<u>Past Year-to-Date</u>	<u>Percent Change</u>
MURDER & NON-NEGLIGENT MANSLAUGHTER	0	0	NA	0	NA	3	3	0.0%
RAPE	2	1	100.0%	1	100.0%	11	8	37.5%
ROBBERY	26	27	-3.7%	30	-13.3%	142	166	-14.5%
ARMED	23	24	-4.2%	23	0.0%	127	134	-5.2%
STRONG-ARM	3	3	0.0%	7	-57.1%	15	32	-53.1%
AGGRAVATED ASSAULT	28	43	-34.9%	26	7.7%	187	148	26.4%
BURGLARY	109	93	17.2%	70	55.7%	530	455	16.5%
RESIDENTIAL	89	77	15.6%	41	117.1%	411	330	24.5%
COMMERCIAL	20	16	25.0%	29	-31.0%	119	125	-4.8%
LARCENY	231	244	-5.3%	211	9.5%	1276	1017	25.5%
FROM AUTO	104	112	-7.1%	101	3.0%	676	481	40.5%
BICYCLE	3	7	-57.1%	5		17	12	41.7%
SHOPLIFTING	45	43	4.7%	26	73.1%	233	143	62.9%
OTHERS	79	82	-3.7%	79	0.0%	350	381	-8.1%
VEHICLE THEFT	62	41	51.2%	43	44.2%	281	208	35.1%
ARSON	3	1	200.0%	1	200.0%	15	10	50.0%
TOTALS	461	450	2.4%	382	20.7%	2445	2015	21.3%
VIOLENT	56	71	-21.1%	57	-1.8%	343	325	5.5%
PROPERTY	405	379	6.9%	325	24.6%	2102	1690	24.4%

North Tryon Division (07)								
	<u>Current month</u>	<u>Previous Month</u>	<u>Percent Change</u>	<u>Same Month Last Year</u>	<u>Percent Change</u>	<u>Current Year-to-Date</u>	<u>Past Year-to-Date</u>	<u>Percent Change</u>
MURDER & NON-NEGLIGENT MANSLAUGHTER	1	2	-50.0%	0	NA	3	7	-57.1%
RAPE	6	1	500.0%	-1	-700.0%	14	10	40.0%
ROBBERY	29	36	-19.4%	37	-21.6%	184	175	5.1%
ARMED	25	32	-21.9%	31	-19.4%	157	146	7.5%
STRONG-ARM	4	4	0.0%	6	-33.3%	27	29	-6.9%
AGGRAVATED ASSAULT	49	28	75.0%	31	58.1%	171	181	-5.5%
BURGLARY	75	89	-15.7%	132	-43.2%	467	478	-2.3%
RESIDENTIAL	54	62	-12.9%	69	-21.7%	299	323	-7.4%
COMMERCIAL	21	27	-22.2%	63	-66.7%	168	155	8.4%
LARCENY	128	127	0.8%	156	-17.9%	802	828	-3.1%
FROM AUTO	65	63	3.2%	83	-21.7%	425	451	-5.8%
BICYCLE	1	2	-50.0%	1		6	7	-14.3%
SHOPLIFTING	3	10	-70.0%	8	-62.5%	60	41	46.3%
OTHERS	59	52	13.5%	64	-7.8%	311	329	-5.5%
VEHICLE THEFT	38	40	-5.0%	64	-40.6%	276	318	-13.2%
ARSON	5	3	66.7%	4	25.0%	13	14	-7.1%
TOTALS	331	326	1.5%	423	-21.7%	1930	2011	-4.0%
VIOLENT	85	67	26.9%	67	26.9%	372	373	-0.3%
PROPERTY	246	259	-5.0%	356	-30.9%	1558	1638	-4.9%

North Service Area:

June, 2008

North Division (11)								
	<u>Current month</u>	<u>Previous Month</u>	<u>Percent Change</u>	<u>Same Month Last Year</u>	<u>Percent Change</u>	<u>Current Year-to-Date</u>	<u>Past Year-to-Date</u>	<u>Percent Change</u>
MURDER & NON-NEGLIGENT MANSLAUGHTER	-1	0	NA	0	NA	6	1	500.0%
RAPE	1	2	-50.0%	1	0.0%	9	11	-18.2%
ROBBERY	8	17	-52.9%	6	33.3%	64	58	10.3%
ARMED	7	15	-53.3%	7	0.0%	55	52	5.8%
STRONG-ARM	1	2	-50.0%	-1	-200.0%	9	6	50.0%
AGGRAVATED ASSAULT	20	33	-39.4%	32	-37.5%	148	155	-4.5%
BURGLARY	120	133	-9.8%	123	-2.4%	816	764	6.8%
RESIDENTIAL	99	100	-1.0%	102	-2.9%	641	593	8.1%
COMMERCIAL	21	33	-36.4%	21	0.0%	175	171	2.3%
LARCENY	241	194	24.2%	247	-2.4%	1254	1287	-2.6%
FROM AUTO	133	80	66.3%	134	-0.7%	641	678	-5.5%
BICYCLE	1	2	-50.0%	3		3	7	-57.1%
SHOPLIFTING	32	39	-17.9%	26	23.1%	202	118	71.2%
OTHERS	75	73	2.7%	84	-10.7%	408	484	-15.7%
VEHICLE THEFT	40	23	73.9%	44	-9.1%	211	217	-2.8%
ARSON	3	3	0.0%	1	200.0%	16	21	-23.8%
TOTALS	432	405	6.7%	454	-4.8%	2524	2514	0.4%
VIOLENT PROPERTY	28 404	52 353	-46.2% 14.4%	39 415	-28.2% -2.7%	227 2297	225 2289	0.9% 0.3%

University City Division (14)								
	<u>Current month</u>	<u>Previous Month</u>	<u>Percent Change</u>	<u>Same Month Last Year</u>	<u>Percent Change</u>	<u>Current Year-to-Date</u>	<u>Past Year-to-Date</u>	<u>Percent Change</u>
MURDER & NON-NEGLIGENT MANSLAUGHTER	1	0	NA	1	0.0%	2	2	0.0%
RAPE	4	0	NA	0	NA	11	11	0.0%
ROBBERY	13	15	-13.3%	12	8.3%	96	65	47.7%
ARMED	12	14	-14.3%	9	33.3%	81	55	47.3%
STRONG-ARM	1	1	0.0%	3	-66.7%	15	10	50.0%
AGGRAVATED ASSAULT	11	13	-15.4%	15	-26.7%	87	53	64.2%
BURGLARY	74	86	-14.0%	63	17.5%	514	406	26.6%
RESIDENTIAL	64	61	4.9%	48	33.3%	415	296	40.2%
COMMERCIAL	10	25	-60.0%	15	-33.3%	99	110	-10.0%
LARCENY	244	314	-22.3%	306	-20.3%	1811	1469	23.3%
FROM AUTO	152	206	-26.2%	209	-27.3%	1201	889	35.1%
BICYCLE	1	2	-50.0%	2		4	8	-50.0%
SHOPLIFTING	23	36	-36.1%	25	-8.0%	185	151	22.5%
OTHERS	68	70	-2.9%	70	-2.9%	421	421	0.0%
VEHICLE THEFT	23	29	-20.7%	42	-45.2%	230	205	12.2%
ARSON	7	0	NA	2	250.0%	13	11	18.2%
TOTALS	377	457	-17.5%	441	-14.5%	2764	2222	24.4%
VIOLENT PROPERTY	29 348	28 429	3.6% -18.9%	28 413	3.6% -15.7%	196 2568	131 2091	49.6% 22.8%

Southeast Service Area

June, 2008

Hickory Grove Division (12)								
	<u>Current month</u>	<u>Previous Month</u>	<u>Percent Change</u>	<u>Same Month Last Year</u>	<u>Percent Change</u>	<u>Current Year-to-Date</u>	<u>Past Year-to-Date</u>	<u>Percent Change</u>
MURDER & NON-NEGLIGENT MANSLAUGHTER	0	1	-100.0%	0	NA	4	0	NA
RAPE	2	0	NA	3	-33.3%	7	11	-36.4%
ROBBERY	13	15	-13.3%	17	-23.5%	96	98	-2.0%
ARMED	9	13	-30.8%	15	-40.0%	83	77	7.8%
STRONG-ARM	4	2	100.0%	2	100.0%	13	21	-38.1%
AGGRAVATED ASSAULT	14	8	75.0%	24	-41.7%	89	102	-12.7%
BURGLARY	73	94	-22.3%	49	49.0%	415	402	3.2%
RESIDENTIAL	58	81	-28.4%	37	56.8%	352	323	9.0%
COMMERCIAL	15	13	15.4%	12	25.0%	63	79	-20.3%
LARCENY	132	123	7.3%	127	3.9%	758	717	5.7%
FROM AUTO	63	63	0.0%	65	-3.1%	382	345	10.7%
BICYCLE	1	4	-75.0%	1		6	11	-45.5%
SHOPLIFTING	6	12	-50.0%	10	-40.0%	72	56	28.6%
OTHERS	62	44	40.9%	51	21.6%	298	305	-2.3%
VEHICLE THEFT	46	29	58.6%	57	-19.3%	244	218	11.9%
ARSON	0	4	-100.0%	6	-100.0%	11	14	-21.4%
TOTALS	280	274	2.2%	283	-1.1%	1624	1562	4.0%
VIOLENT PROPERTY	29 251	24 250	20.8% 0.4%	44 239	-34.1% 5.0%	196 1428	211 1351	-7.1% 5.7%

Independence Division (17)								
	<u>Current month</u>	<u>Previous Month</u>	<u>Percent Change</u>	<u>Same Month Last Year</u>	<u>Percent Change</u>	<u>Current Year-to-Date</u>	<u>Past Year-to-Date</u>	<u>Percent Change</u>
MURDER & NON-NEGLIGENT MANSLAUGHTER	0	1	-100.0%	0	NA	3	2	50.0%
RAPE	1	0	NA	2	-50.0%	10	11	-9.1%
ROBBERY	24	26	-7.7%	15	60.0%	117	89	31.5%
ARMED	19	23	-17.4%	13	46.2%	96	71	35.2%
STRONG-ARM	5	3	66.7%	2	150.0%	21	18	16.7%
AGGRAVATED ASSAULT	33	31	6.5%	19	73.7%	143	120	19.2%
BURGLARY	83	80	3.8%	60	38.3%	405	383	5.7%
RESIDENTIAL	56	66	-15.2%	46	21.7%	323	298	8.4%
COMMERCIAL	27	14	92.9%	14	92.9%	82	85	-3.5%
LARCENY	191	202	-5.4%	171	11.7%	1016	949	7.1%
FROM AUTO	121	127	-4.7%	105	15.2%	613	498	23.1%
BICYCLE	2	4	-50.0%	6		16	21	-23.8%
SHOPLIFTING	14	20	-30.0%	12	16.7%	99	80	23.8%
OTHERS	54	51	5.9%	48	12.5%	288	350	-17.7%
VEHICLE THEFT	27	35	-22.9%	44	-38.6%	190	230	-17.4%
ARSON	2	3	-33.3%	7	-71.4%	11	12	-8.3%
TOTALS	361	378	-4.5%	318	13.5%	1895	1796	5.5%
VIOLENT PROPERTY	58 303	58 320	0.0% -5.3%	36 282	61.1% 7.4%	273 1622	222 1574	23.0% 3.0%

South Service Area:

June, 2008

Providence Division (16)								
	<u>Current month</u>	<u>Previous Month</u>	<u>Percent Change</u>	<u>Same Month Last Year</u>	<u>Percent Change</u>	<u>Current Year-to-Date</u>	<u>Past Year-to-Date</u>	<u>Percent Change</u>
MURDER & NON-NEGLIGENT MANSLAUGHTER	0	0	NA	0	NA	0	3	-100.0%
RAPE	0	0	NA	5	-100.0%	8	8	0.0%
ROBBERY	11	5	120.0%	16	-31.3%	66	63	4.8%
ARMED	4	2	100.0%	14	-71.4%	42	43	-2.3%
STRONG-ARM	7	3	133.3%	2	250.0%	24	20	20.0%
AGGRAVATED ASSAULT	15	12	25.0%	13	15.4%	87	74	17.6%
BURGLARY	94	87	8.0%	106	-11.3%	443	514	-13.8%
RESIDENTIAL	75	66	13.6%	46	63.0%	347	272	27.6%
COMMERCIAL	19	21	-9.5%	60	-68.3%	96	242	-60.3%
LARCENY	280	260	7.7%	246	13.8%	1631	1393	17.1%
FROM AUTO	172	172	0.0%	146	17.8%	1062	785	35.3%
BICYCLE	3	1	200.0%	1		11	8	37.5%
SHOPLIFTING	29	17	70.6%	22	31.8%	131	128	2.3%
OTHERS	76	70	8.6%	77	-1.3%	427	472	-9.5%
VEHICLE THEFT	34	29	17.2%	22	54.5%	145	129	12.4%
ARSON	0	1	-100.0%	0	NA	8	6	33.3%
TOTALS	434	394	10.2%	408	6.4%	2388	2190	9.0%
VIOLENT PROPERTY	26	17	52.9%	34	-23.5%	161	148	8.8%
	408	377	8.2%	374	9.1%	2227	2042	9.1%

South Division (22)								
	<u>Current month</u>	<u>Previous Month</u>	<u>Percent Change</u>	<u>Same Month Last Year</u>	<u>Percent Change</u>	<u>Current Year-to-Date</u>	<u>Past Year-to-Date</u>	<u>Percent Change</u>
MURDER & NON-NEGLIGENT MANSLAUGHTER	0	0	NA	0	NA	0	0	NA
RAPE	1	0	NA	1	0.0%	4	4	0.0%
ROBBERY	5	4	25.0%	5	0.0%	31	21	47.6%
ARMED	4	3	33.3%	5	-20.0%	24	15	60.0%
STRONG-ARM	1	1	0.0%	0	NA	7	6	16.7%
AGGRAVATED ASSAULT	7	6	16.7%	13	-46.2%	54	41	31.7%
BURGLARY	42	61	-31.1%	32	31.3%	297	238	24.8%
RESIDENTIAL	28	46	-39.1%	21	33.3%	230	178	29.2%
COMMERCIAL	14	15	-6.7%	11	27.3%	67	60	11.7%
LARCENY	175	243	-28.0%	163	7.4%	1147	865	32.6%
FROM AUTO	103	168	-38.7%	90	14.4%	732	447	63.8%
BICYCLE	1	1	0.0%	2		9	5	80.0%
SHOPLIFTING	16	16	0.0%	12	33.3%	79	61	29.5%
OTHERS	55	58	-5.2%	59	-6.8%	327	352	-7.1%
VEHICLE THEFT	16	17	-5.9%	23	-30.4%	82	101	-18.8%
ARSON	1	1	0.0%	1	0.0%	6	13	-53.8%
TOTALS	247	332	-25.6%	238	3.8%	1621	1283	26.3%
VIOLENT PROPERTY	13	10	30.0%	19	-31.6%	89	66	34.8%
	234	322	-27.3%	219	6.8%	1532	1217	25.9%

Southwest Service Area:

June, 2008

Westover Division (26)								
	<u>Current month</u>	<u>Previous Month</u>	<u>Percent Change</u>	<u>Same Month Last Year</u>	<u>Percent Change</u>	<u>Current Year-to-Date</u>	<u>Past Year-to-Date</u>	<u>Percent Change</u>
MURDER & NON-NEGLIGENT MANSLAUGHTER	3	1	200.0%	1	200.0%	7	4	75.0%
RAPE	2	3	-33.3%	3	-33.3%	16	12	33.3%
ROBBERY	31	30	3.3%	23	34.8%	149	144	3.5%
ARMED	27	26	3.8%	21	28.6%	120	118	1.7%
STRONG-ARM	4	4	0.0%	2	100.0%	29	26	11.5%
AGGRAVATED ASSAULT	52	40	30.0%	34	52.9%	231	216	6.9%
BURGLARY	89	83	7.2%	100	-11.0%	479	568	-15.7%
RESIDENTIAL	68	63	7.9%	41	65.9%	359	291	23.4%
COMMERCIAL	21	20	5.0%	59	-64.4%	120	277	-56.7%
LARCENY	245	234	4.7%	243	0.8%	1297	1308	-0.8%
FROM AUTO	126	151	-16.6%	151	-16.6%	774	740	4.6%
BICYCLE	2	4	-50.0%	5	7	8	-12.5%	
SHOPLIFTING	21	17	23.5%	16	31.3%	106	138	-23.2%
OTHERS	96	62	54.8%	71	35.2%	410	422	-2.8%
VEHICLE THEFT	56	60	-6.7%	53	5.7%	253	216	17.1%
ARSON	3	6	-50.0%	4	-25.0%	19	20	-5.0%
TOTALS	481	457	5.3%	461	4.3%	2451	2488	-1.5%
VIOLENT PROPERTY	88 393	74 383	18.9% 2.6%	61 400	44.3% -1.8%	403 2048	376 2112	7.2% -3.0%

Steele Creek Division (21)								
	<u>Current month</u>	<u>Previous Month</u>	<u>Percent Change</u>	<u>Same Month Last Year</u>	<u>Percent Change</u>	<u>Current Year-to-Date</u>	<u>Past Year-to-Date</u>	<u>Percent Change</u>
MURDER & NON-NEGLIGENT MANSLAUGHTER	0	0	NA	0	NA	6	0	NA
RAPE	2	1	100.0%	1	100.0%	8	16	-50.0%
ROBBERY	30	12	150.0%	30	0.0%	145	133	9.0%
ARMED	20	8	150.0%	28	-28.6%	119	110	8.2%
STRONG-ARM	10	4	150.0%	2	400.0%	26	23	13.0%
AGGRAVATED ASSAULT	14	11	27.3%	21	-33.3%	127	165	-23.0%
BURGLARY	87	83	4.8%	54	61.1%	481	396	21.5%
RESIDENTIAL	68	72	-5.6%	33	106.1%	373	264	41.3%
COMMERCIAL	19	11	72.7%	21	-9.5%	108	132	-18.2%
LARCENY	303	396	-23.5%	331	-8.5%	1767	1534	15.2%
FROM AUTO	199	258	-22.9%	205	-2.9%	1095	877	24.9%
BICYCLE	1	2	-50.0%	2	6	10	-40.0%	
SHOPLIFTING	24	26	-7.7%	26	-7.7%	170	147	15.6%
OTHERS	79	110	-28.2%	98	-19.4%	496	500	-0.8%
VEHICLE THEFT	45	42	7.1%	52	-13.5%	267	267	0.0%
ARSON	5	3	66.7%	2	150.0%	23	25	-8.0%
TOTALS	486	548	-11.3%	491	-1.0%	2824	2536	11.4%
VIOLENT PROPERTY	46 440	24 524	91.7% -16.0%	52 439	-11.5% 0.2%	286 2538	314 2222	-8.9% 14.2%

West Service Area:**June, 2008**

Metro Division (02)								
	<u>Current month</u>	<u>Previous Month</u>	<u>Percent Change</u>	<u>Same Month Last Year</u>	<u>Percent Change</u>	<u>Current Year-to-Date</u>	<u>Past Year-to-Date</u>	<u>Percent Change</u>
MURDER & NON-NEGLIGENT MANSLAUGHTER	1	1	0.0%	1	0.0%	5	8	-37.5%
RAPE	3	7	-57.1%	3	0.0%	15	14	7.1%
ROBBERY	21	37	-43.2%	31	-32.3%	165	150	10.0%
ARMED	18	27	-33.3%	27	-33.3%	136	121	12.4%
STRONG-ARM	3	10	-70.0%	4	-25.0%	29	29	0.0%
AGGRAVATED ASSAULT	48	67	-28.4%	30	60.0%	320	250	28.0%
BURGLARY	94	101	-6.9%	97	-3.1%	511	490	4.3%
RESIDENTIAL	53	60	-11.7%	50	6.0%	333	293	13.7%
COMMERCIAL	41	41	0.0%	47	-12.8%	178	197	-9.6%
LARCENY	207	231	-10.4%	166	24.7%	1132	932	21.5%
FROM AUTO	100	112	-10.7%	67	49.3%	543	391	38.9%
BICYCLE	2	1	100.0%	3		11	6	83.3%
SHOPLIFTING	25	21	19.0%	13	92.3%	99	80	23.8%
OTHERS	80	97	-17.5%	83	-3.6%	479	455	5.3%
VEHICLE THEFT	55	41	34.1%	35	57.1%	258	224	15.2%
ARSON	2	1	100.0%	6	-66.7%	16	23	-30.4%
TOTALS	431	486	-11.3%	369	16.8%	2422	2091	15.8%
VIOLENT PROPERTY	73 358	112 374	-34.8% -4.3%	65 304	12.3% 17.8%	505 1917	422 1669	19.7% 14.9%

Freedom Division (27)								
	<u>Current month</u>	<u>Previous Month</u>	<u>Percent Change</u>	<u>Same Month Last Year</u>	<u>Percent Change</u>	<u>Current Year-to-Date</u>	<u>Past Year-to-Date</u>	<u>Percent Change</u>
MURDER & NON-NEGLIGENT MANSLAUGHTER	0	0	NA	1	-100.0%	2	5	-60.0%
RAPE	2	6	-66.7%	1	100.0%	14	9	55.6%
ROBBERY	23	22	4.5%	20	15.0%	130	125	4.0%
ARMED	18	21	-14.3%	20	-10.0%	107	108	-0.9%
STRONG-ARM	5	1	400.0%	0	NA	23	17	35.3%
AGGRAVATED ASSAULT	37	52	-28.8%	31	19.4%	197	167	18.0%
BURGLARY	84	78	7.7%	127	-33.9%	496	623	-20.4%
RESIDENTIAL	68	56	21.4%	86	-20.9%	378	409	-7.6%
COMMERCIAL	16	22	-27.3%	41	-61.0%	118	214	-44.9%
LARCENY	209	220	-5.0%	254	-17.7%	1268	1381	-8.2%
FROM AUTO	95	145	-34.5%	148	-35.8%	713	746	-4.4%
BICYCLE	2	1	100.0%	0		4	6	-33.3%
SHOPLIFTING	12	10	20.0%	27	-55.6%	92	115	-20.0%
OTHERS	100	64	56.3%	79	26.6%	459	514	-10.7%
VEHICLE THEFT	58	47	23.4%	56	3.6%	284	290	-2.1%
ARSON	2	0	NA	3	-33.3%	11	19	-42.1%
TOTALS	415	425	-2.4%	493	-15.8%	2402	2619	-8.3%
VIOLENT PROPERTY	62 353	80 345	-22.5% 2.3%	53 440	17.0% -19.8%	343 2059	306 2313	12.1% -11.0%

Central Service Area:**June, 2008**

Central Division (01)								
	<u>Current</u> <u>month</u>	<u>Previous</u> <u>Month</u>	<u>Percent</u> <u>Change</u>	<u>Same Month</u> <u>Last Year</u>	<u>Percent</u> <u>Change</u>	<u>Current Year-</u> <u>to-Date</u>	<u>Past Year-</u> <u>to-Date</u>	<u>Percent</u> <u>Change</u>
MURDER & NON-NEGLIGENT MANSLAUGHTER	0	1	-100.0%	2	-100.0%	1	3	-66.7%
RAPE	1	2	-50.0%	2	-50.0%	8	5	60.0%
ROBBERY	12	14	-14.3%	9	33.3%	57	57	0.0%
ARMED	8	9	-11.1%	7	14.3%	35	36	-2.8%
STRONG-ARM	4	5	-20.0%	2	100.0%	22	21	4.8%
AGGRAVATED ASSAULT	14	7	100.0%	12	16.7%	64	76	-15.8%
BURGLARY	33	26	26.9%	23	43.5%	155	137	13.1%
RESIDENTIAL	19	10	90.0%	4	375.0%	69	53	30.2%
COMMERCIAL	14	16	-12.5%	19	-26.3%	86	84	2.4%
LARCENY	188	195	-3.6%	240	-21.7%	1127	1099	2.5%
FROM AUTO	81	121	-33.1%	130	-37.7%	612	558	9.7%
BICYCLE	1	0	NA	4	-75.0%	5	9	-44.4%
SHOPLIFTING	8	13	-38.5%	10	-20.0%	78	67	16.4%
OTHERS	98	61	60.7%	96	2.1%	432	465	-7.1%
VEHICLE THEFT	26	28	-7.1%	45	-42.2%	118	135	-12.6%
ARSON	0	1	-100.0%	0	NA	2	3	-33.3%
TOTALS	274	274	0.0%	333	-17.7%	1532	1515	1.1%
VIOLENT PROPERTY	27 247	24 250	12.5% -1.2%	25 308	8.0% -19.8%	130 1402	141 1374	-7.8% 2.0%

Year-to-Date Index Crimes by Service Area: June, 2008

Index Offenses	East Service Area Totals			North Service Area Totals			Southeast Service Area Totals		
	Current Year- to-Date	Past Year- to-Date	Percent Change	Current Year- to-Date	Past Year- to-Date	Percent Change	Current Year- to-Date	Past Year- to-Date	Percent Change
MURDER & NON-NEGLIGENT MANSLAUGHTER	6	10	-40.0%	8	3	166.7%	7	2	250.0%
RAPE	25	18	38.9%	20	22	-9.1%	17	22	-22.7%
ROBBERY	326	341	-4.4%	160	123	30.1%	213	187	13.9%
ARMED	284	280	1.4%	136	107	27.1%	179	148	20.9%
STRONG-ARM	42	61	-31.1%	24	16	50.0%	34	39	-12.8%
AGGRAVATED ASSAULT	358	329	8.8%	235	208	13.0%	232	222	4.5%
BURGLARY	997	933	6.9%	1330	1170	13.7%	820	785	4.5%
RESIDENTIAL	710	653	8.7%	1056	889	18.8%	675	621	8.7%
COMMERCIAL	287	280	2.5%	274	281	-2.5%	145	164	-11.6%
LARCENY	2078	1845	12.6%	3065	2756	11.2%	1774	1666	6.5%
FROM AUTO	1101	932	18.1%	1842	1567	17.5%	995	843	18.0%
BICYCLE	23	19	21.1%	7	15	-53.3%	22	32	-31.3%
SHOPLIFTING	293	184	59.2%	387	269	43.9%	171	136	25.7%
OTHERS	661	710	-6.9%	829	905	-8.4%	586	655	-10.5%
VEHICLE THEFT	557	526	5.9%	441	422	4.5%	434	448	-3.1%
ARSON	28	24	16.7%	29	32	-9.4%	22	26	-15.4%
TOTALS	4375	4026	8.7%	5288	4736	11.7%	3519	3358	4.8%
VIOLENT PROPERTY	715 3660	698 3328	2.4% 10.0%	423 4865	356 4380	18.8% 11.1%	469 3050	433 2925	8.3% 4.3%

Year-to-Date Index Crimes by Service Area: June, 2008

Index Offenses	South Service Area Totals			Southwest Service Area Totals			West Service Area Totals		
	<u>Current Year- to-Date</u>	<u>Past Year- to-Date</u>	<u>Percent Change</u>	<u>Current Year- to-Date</u>	<u>Past Year- to-Date</u>	<u>Percent Change</u>	<u>Current Year- to-Date</u>	<u>Past Year- to-Date</u>	<u>Percent Change</u>
MURDER & NON-NEGLIGENT MANSLAUGHTER	0	3	-100.0%	13	4	225.0%	7	13	-46.2%
RAPE	12	12	0.0%	24	28	-14.3%	29	23	26.1%
ROBBERY	97	84	15.5%	294	277	6.1%	295	275	7.3%
ARMED	66	58	13.8%	239	228	4.8%	243	229	6.1%
STRONG-ARM	31	26	19.2%	55	49	12.2%	52	46	13.0%
AGGRAVATED ASSAULT	141	115	22.6%	358	381	-6.0%	517	417	24.0%
BURGLARY	740	752	-1.6%	960	964	-0.4%	1007	1113	-9.5%
RESIDENTIAL	577	450	28.2%	732	555	31.9%	711	702	1.3%
COMMERCIAL	163	302	-46.0%	228	409	-44.3%	296	411	-28.0%
LARCENY	2778	2258	23.0%	3064	2842	7.8%	2400	2313	3.8%
FROM AUTO	1794	1232	45.6%	1869	1617	15.6%	1256	1137	10.5%
BICYCLE	20	13	53.8%	13	18	-27.8%	15	12	25.0%
SHOPLIFTING	210	189	11.1%	276	285	-3.2%	191	195	-2.1%
OTHERS	754	824	-8.5%	906	922	-1.7%	938	969	-3.2%
VEHICLE THEFT	227	230	-1.3%	520	483	7.7%	542	514	5.4%
ARSON	14	19	-26.3%	42	45	-6.7%	27	42	-35.7%
TOTALS	4009	3473	15.4%	5275	5024	5.0%	4824	4710	2.4%
VIOLENT PROPERTY	250 3759	214 3259	16.8% 15.3%	689 4586	690 4334	-0.1% 5.8%	848 3976	728 3982	16.5% -0.2%

Year-to-Date Index Crimes by Service Area: June, 2008

Index Offenses	Central Service Area Totals		
	Current Year- to-Date	Past Year- to-Date	Percent Change
MURDER & NON-NEGLIGENT MANSLAUGHTER	1	3	-66.7%
RAPE	8	5	60.0%
ROBBERY	57	57	0.0%
ARMED	35	36	-2.8%
STRONG-ARM	22	21	4.8%
AGGRAVATED ASSAULT	64	76	-15.8%
BURGLARY	155	137	13.1%
RESIDENTIAL	69	53	30.2%
COMMERCIAL	86	84	2.4%
LARCENY	1127	1099	2.5%
FROM AUTO	612	558	9.7%
BICYCLE	5	9	-44.4%
SHOPLIFTING	78	67	16.4%
OTHERS	432	465	-7.1%
VEHICLE THEFT	118	135	-12.6%
ARSON	2	3	-33.3%
TOTALS	1532	1515	1.1%
VIOLENT PROPERTY	130 1402	141 1374	-7.8% 2.0%

Arrests by Charlotte-Mecklenburg Police Department
Year-To-Date: 2007-2008
(Through June)

CATEGORY	ADULTS (AGE 18 & OLDER):			JUVENILES (UNDER 18):			TOTAL ARRESTS:		
	2007 Y-T-D	2008 Y-T-D	% CHANGE	2007 Y-T-D	2008 Y-T-D	% CHANGE	2007 Y-T-D	2008 Y-T-D	% CHANGE
Murder/Non-Negligent Manslaughter	25	7	-72.0%	3	0	-100.0%	28	7	-75.0%
Negligent & Vehicular Manslaughter	0	2	NA	0	0	NA	0	2	NA
Rape	7	7	0.0%	3	2	-33.3%	10	9	-10.0%
Robbery	185	190	2.7%	87	61	-29.9%	272	251	-7.7%
Aggravated Assault	783	720	-8.0%	126	101	-19.8%	909	821	-9.7%
Burglary	334	329	-1.5%	188	209	11.2%	522	538	3.1%
Larceny	719	890	23.8%	275	339	23.3%	994	1229	23.6%
Vehicle Theft	36	66	83.3%	72	60	-16.7%	108	126	16.7%
Non-Aggravated Assault	971	1014	4.4%	409	426	4.2%	1380	1440	4.3%
Arson	7	6	-14.3%	15	16	6.7%	22	22	0.0%
Forgery/Counterfeit	61	59	-3.3%	0	1	NA	61	60	-1.6%
Fraud	220	239	8.6%	1	6	500.0%	221	245	10.9%
Embezzlement	47	65	38.3%	7	6	-14.3%	54	71	31.5%
Stolen Property	255	250	-2.0%	60	60	0.0%	315	310	-1.6%
Vandalism	135	99	-26.7%	117	105	-10.3%	252	204	-19.0%
Weapons	438	414	-5.5%	24	91	279.2%	462	505	9.3%
Prostitution	52	58	11.5%	0	2	NA	52	60	15.4%
Sex Offenses	91	65	-28.6%	8	5	-37.5%	99	70	-29.3%
Drugs	1598	1833	14.7%	231	223	-3.5%	1829	2056	12.4%
Gambling	0	4	NA	0	0	NA	0	4	NA
Offenses vs. Family	0	2	NA	0	0	NA	0	2	NA
DUI	960	1168	21.7%	2	3	50.0%	962	1171	21.7%
Liquor	117	111	-5.1%	9	21	133.3%	126	132	4.8%
Disorder.Conduct	313	350	11.8%	185	180	-2.7%	498	530	6.4%
Other Non-Traffic	3777	3885	2.9%	481	398	-17.3%	4258	4283	0.6%
VIOLENT INDEX¹	1000	924	-7.6%	219	164	-25.1%	1219	1088	-10.7%
PROPERTY INDEX²	1096	1291	17.8%	550	624	13.5%	1646	1915	16.3%
INDEX SUBTOTAL	2096	2215	5.7%	769	788	2.5%	2865	3003	4.8%
PART 2 SUBTOTAL³	9035	9618	6.5%	1534	1527	-0.5%	10569	11145	5.4%
TOTAL	11131	11833	6.3%	2303	2315	0.5%	13434	14148	5.3%

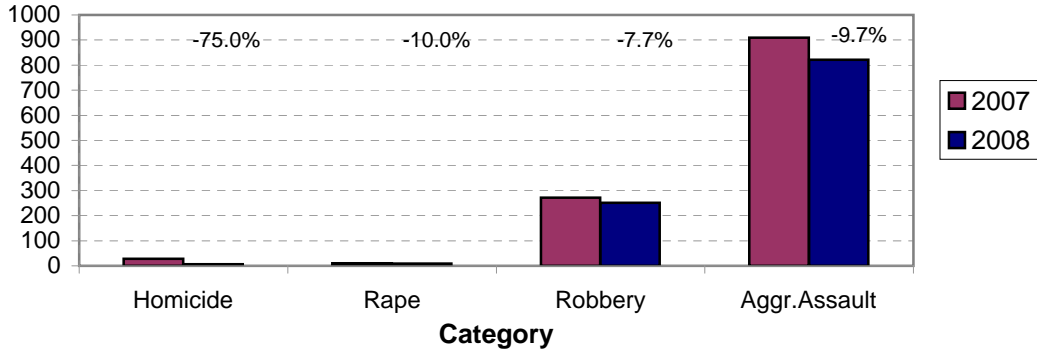
Note: Juvenile arrest totals for June 2007 included the late entry of some arrests from previous months. Monthly totals under 18 for 2007 and 2008 were adjusted in April, 2008, to include some juvenile arrests (under 16) that were not originally counted in the arrest data due to an error in the computer program.

¹Violent Index includes murder and non-negligent manslaughter, rape, robbery, and aggravated assault.

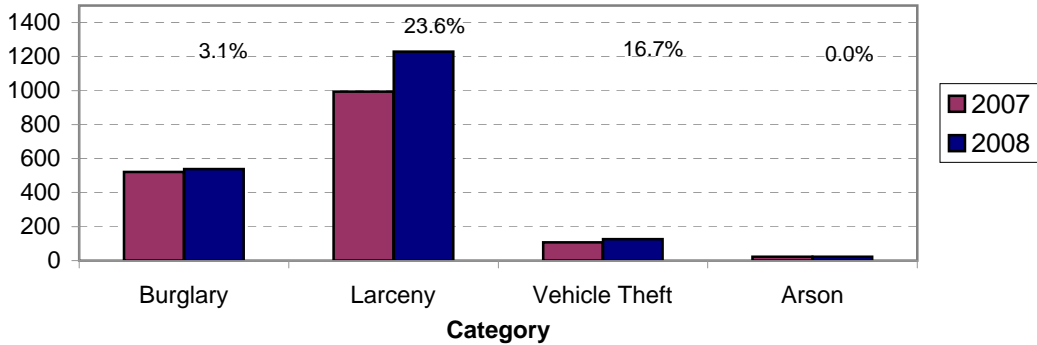
²Property Index includes burglary, larceny, vehicle theft, and arson.

³Part 2 crimes include crime categories not counted in the Index totals.

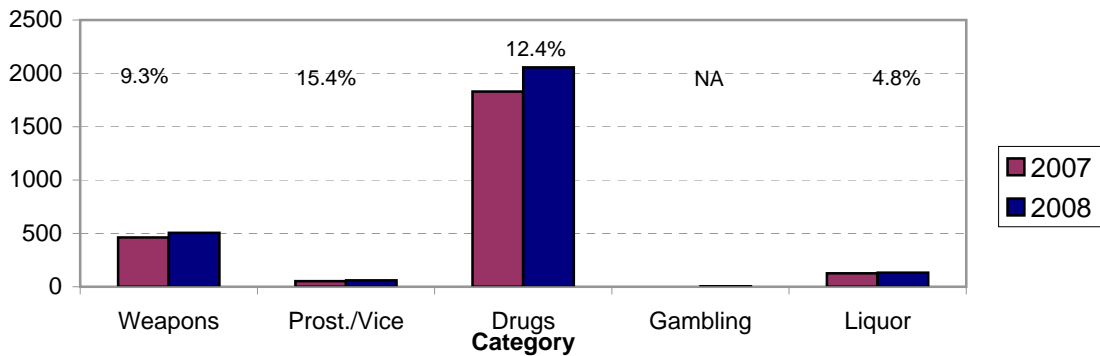
**Violent Index Arrests Year-to-Date
Charlotte-Mecklenburg Police Department: 2007-2008
(Through June)**



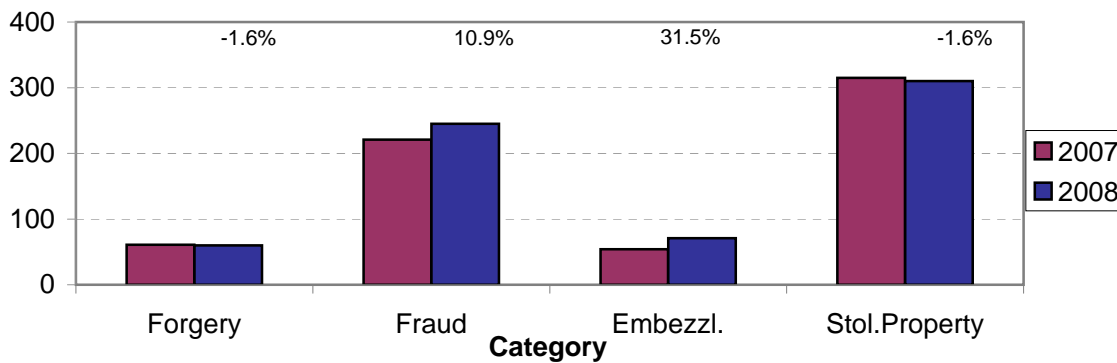
**Property Index Arrests Year-to-Date
Charlotte-Mecklenburg Police Department: 2007-2008
(Through June)**



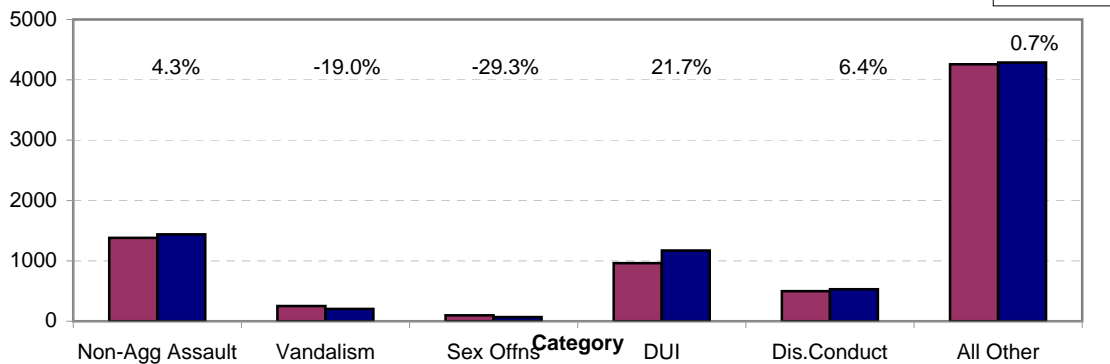
**Arrests for Vice/CCW/Drugs/Etc. Year-to-Date
Charlotte-Mecklenburg Police Department: 2007-2008
(Through June)**



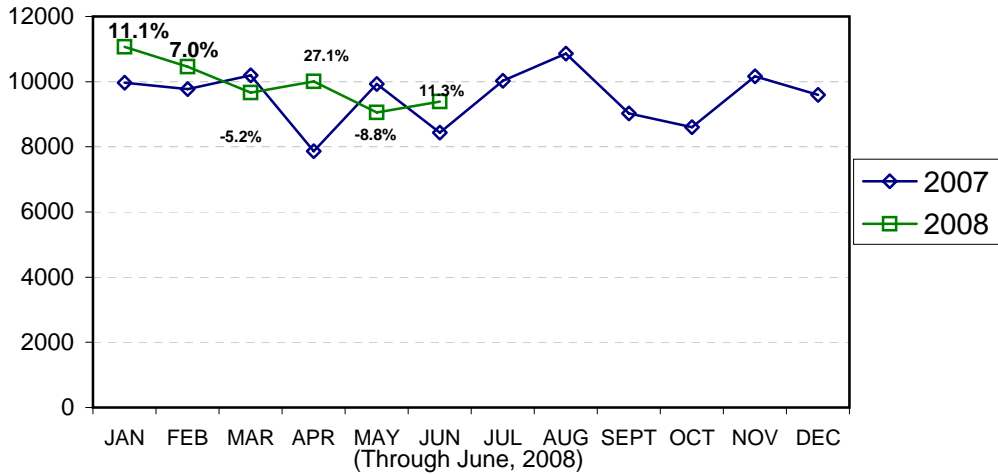
**Arrests for Property/White Collar Crime Year-to-Date
Charlotte-Mecklenburg Police Department: 2007-2008
(Through June)**



**Arrests for Other Categories Year-to-Date
Charlotte-Mecklenburg Police Department: 2007-2008
(Through June)**

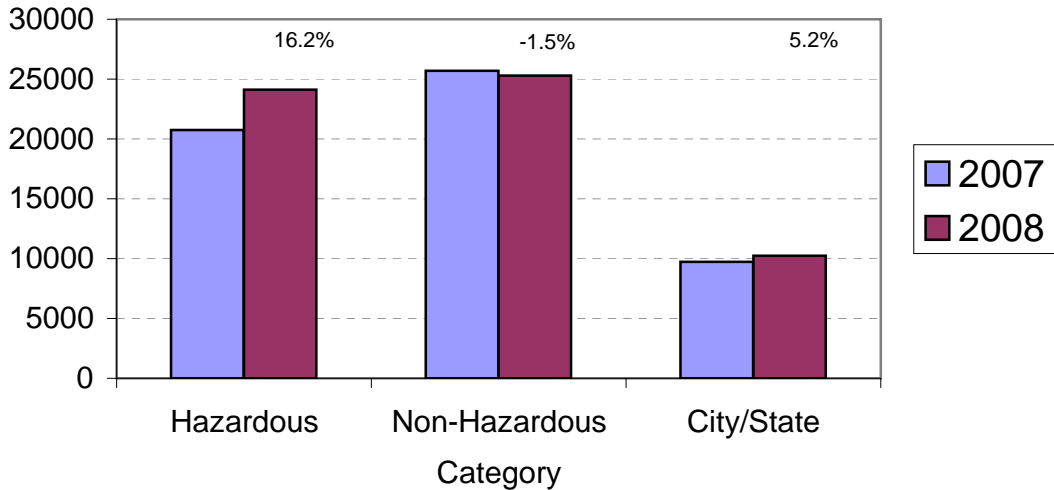


**Total Citation Enforcement by Month
Charlotte-Mecklenburg Police Dept.: 2007-2008**



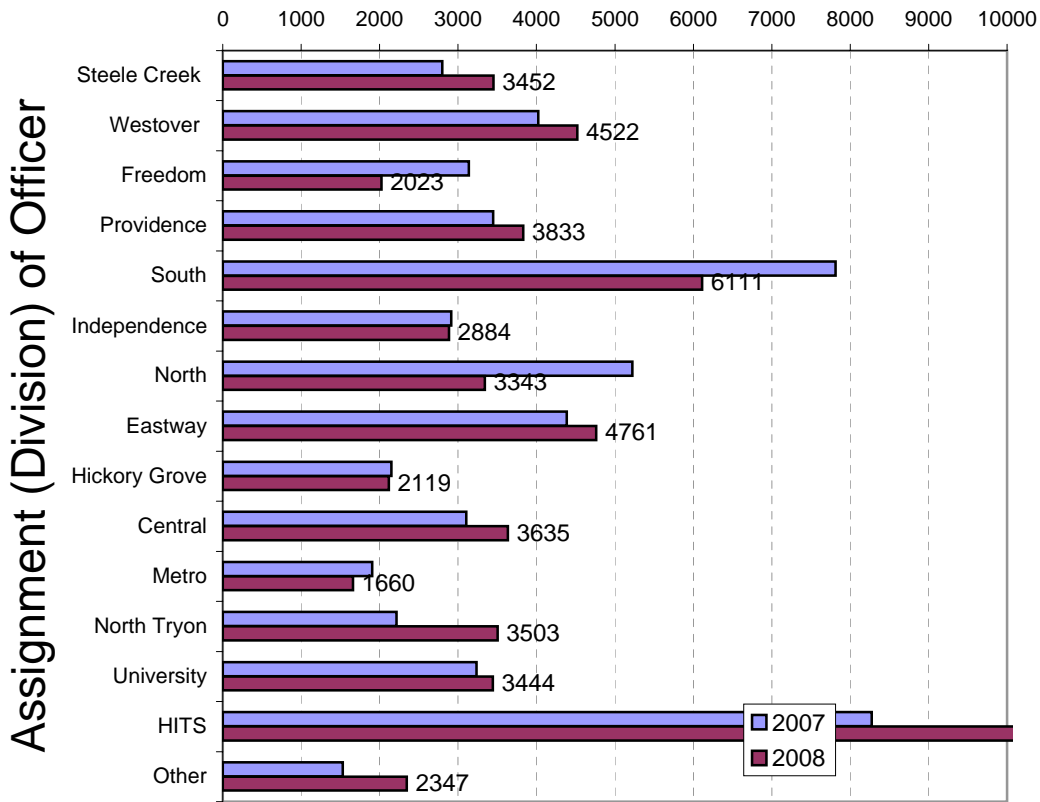
(Includes both traffic and non traffic citations; percentages are current month compared to same month in previous year. Monthly totals may be affected by data entry delays or copies not being routed to the Records Division for tallying.)

**CMPD Citation Enforcement by Category
Year-to-Date, 2007-2008
(Through June, 2008)**



**Citations Issued Year-to-Date by CMPD Divisions
2008**

(Through June, 2008)



Note: Officers' division assignments for Jan 1-12, 2007, were based on the 12 division configuration. Totals may be affected by data entry delays or copies not being routed to the Records Division for tallying.

**Citations Reported by the Charlotte Mecklenburg Police Year-to-Date
(Through June, 2008)**

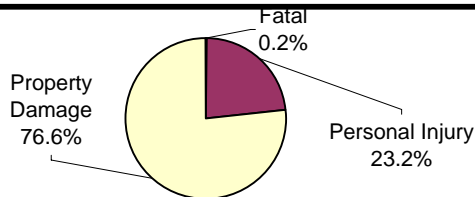
	2007	2008	% Change
Hazardous	20,745	24,107	16.2%
Non-Hazardous	25,684	25,303	-1.5%
Other City/State Statute/Ordinance	9,724	10,232	5.2%
Total	56,153	59,642	6.2%

**Traffic Collision Reports Recorded by
Charlotte-Mecklenburg Police Department
2008 Year-to-Date (See note)
(Through May)**

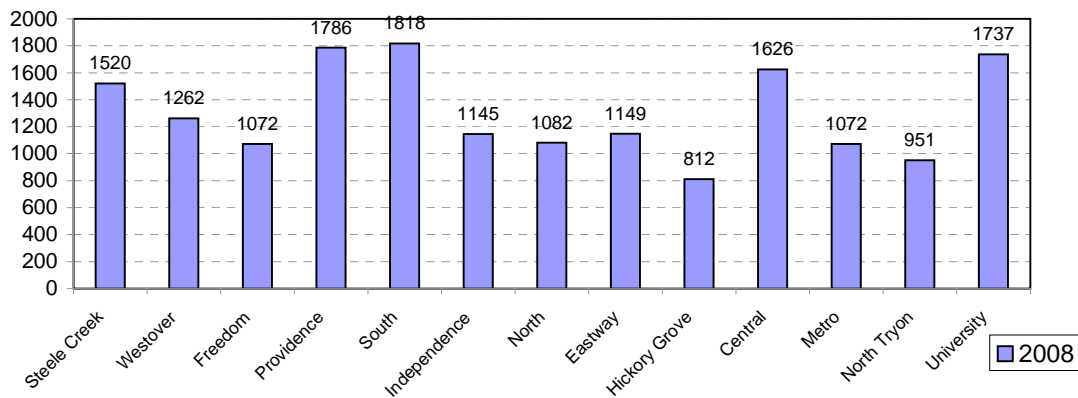
<u>Type</u>	<u>2008</u>
Fatal Collision Reports	31
Vehicle Occupants Killed	23
Pedestrians Killed	8
Personal Injury Collisions	3949
Property Damage Collisions	13052
Total Collision Reports	17032

Note: Comparisons with previous years cannot be provided due to changes related to the adoption of the NC DMV's TraCs reporting system in the third quarter of 2007. This data includes any incident documented on collision report, regardless of whether the report was required under state and DMV laws.

**Traffic Collision Reports by Type
Charlotte-Mecklenburg Police Department:
2008 Year-to-Date
(Through May)**



**Traffic Collision Reports - Charlotte-Mecklenburg Police Dept.
Year-to-Date By Location (Division) : 2008**



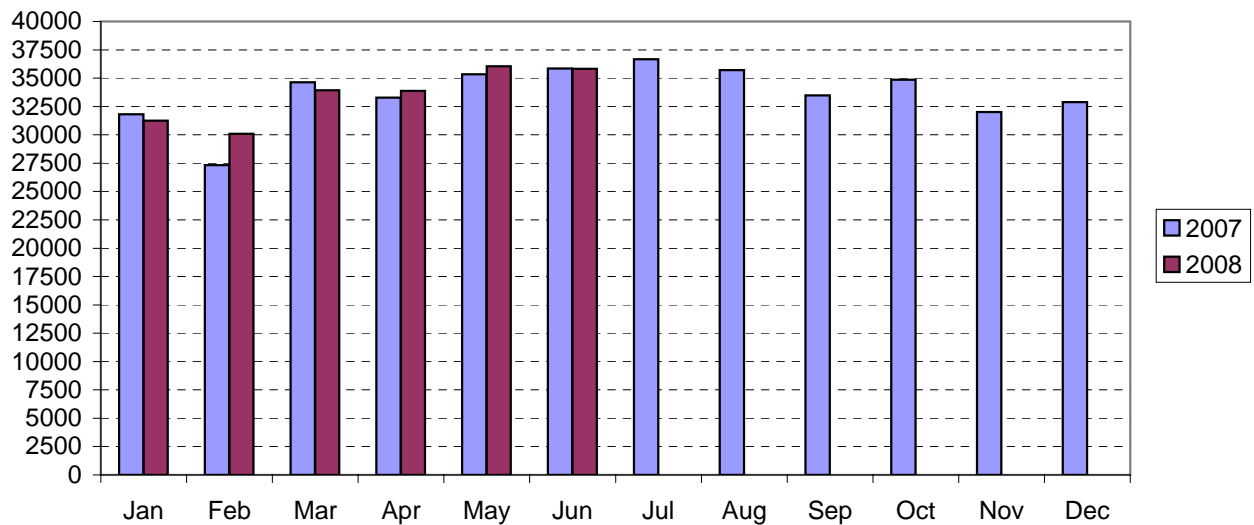
CITIZEN-INITIATED CALLS FOR SERVICE BY ORIGINATING CMPD DIVISION^{1,2}
 (Based on District of Call Origination, Not on Assigned District of Responding Units)

<u>District</u>	<u>2007 Year-to-Date Through June</u>	<u>2008 Year-to-Date Through June</u>	<u>Year-to-Date % Change</u>
Central-01	11499	11726	2.0%
Metro-02	18256	17966	-1.6%
Eastway-06	15518	16163	4.2%
North Tryon-07	14561	14896	2.3%
North-11 (C1)	16210	16716	3.1%
Hickory Grove-12	12348	12241	-0.9%
University-14	15907	16987	6.8%
Providence-16	15552	16485	6.0%
Independence-17	14365	14607	1.7%
Steele Creek-21	16320	16413	0.6%
South-22	13993	14860	6.2%
Westover-26	16704	15958	-4.5%
Freedom-27	15373	15593	1.4%
Total²	196606	200611	2.0%

¹These totals exclude duplicate and cancelled calls for service; they include calls handled by the Crime Reporting Unit as well as by division field officers, detectives and other CMPD staff.

²Calls where the location could not be assigned to one of the divisions are not included in this chart.

Citizen-Initiated Calls for Service¹ by Month
Charlotte-Mecklenburg Police Department: 2007-2008



¹These totals exclude duplicate and cancelled calls for service; they include calls handled by the Crime Reporting Unit as well as by division field officers, detectives and other CMPD staff.

Uniform Crime Reporting Procedures

The Charlotte-Mecklenburg Police Department reports offense and arrest statistics in accordance with standard Uniform Crime Reporting (UCR) guidelines. UCR policy states that any adjustments to previous months can be made on the current month's report:

...In tabulating crime counts, an agency may find that offense totals for past months require adjustments due to developments in the investigation or other handling of the matter. It may be necessary to adjust totals reported to UCR for the past month or prior months. Needed adjustments can be made on the current month's report and do not affect the reliability of the figures in that such adjustments tend to equalize each other from month to month over a period of time.

- *Uniform Crime Reporting Handbook*, FBI, 1984, p. 42-43

We are required to report crime monthly to the UCR program, and we do therefore make an effort to process monthly changes in a timely manner. However, occasionally due to the review and processing required for reclassifying, unbounding or clearing cases, the current month's totals may reflect the processing of a backlog of these changes from previous months.

Users of the data are cautioned that conclusions about substantial changes in crime trends or in clearance rates based on only a single month's data or trend may reflect some of these adjustments. For this reason, in addition to the monthly and year-to-date trends on Page 1, the monthly report routinely includes a comparison for the previous 12 months (p. 4), as well as graphs that provide seasonal/monthly comparisons over a five-year period (p. 5-8).

UCR Definitions and Terms:

Index Crime: the eight offenses that the national UCR program tracks on a yearly basis to gauge trends in the extent of crime, despite differences among state and local criminal statutes. These offenses were selected on the basis of several factors: seriousness, frequency of occurrence, pervasiveness in all geographic areas, and/or likelihood of being reported to law enforcement.

Violent Index: includes the offenses of murder/non-negligent manslaughter, rape, robbery, and aggravated assault

Property Index: includes the offenses of burglary, larceny, vehicle theft and arson

Murder/non-negligent manslaughter: the willful killing of one human being by another (UCR counts each victim.)

Justifiable Homicide: limited by UCR to either a killing by a law enforcement officer in the line of duty or a killing by a citizen of a felon during the commission of a felony. If a homicide is determined to be "justifiable" by this definition, it is subtracted from the murder/non-negligent manslaughter category after investigation.

Rape: the carnal knowledge of a female forcibly and against her will (UCR counts each victim. Note: This offense does not include other sex offenses or statutory (non-forcible) rape.)

Robbery: the taking or attempt to take anything of value from the care, custody, or control of a person or persons by force, threat of force or violence, or by putting the victim in fear. (UCR counts 1 robbery per incident, regardless of the number of victims robbed in the case.)

Aggravated assault: an unlawful attack by one person on another for the purpose of inflicting severe or aggravated bodily injury; includes 1) all assaults in which a weapon of any type is used or is threatened to be used and/or 2) all assaults where serious injury occurs (UCR counts each victim of the assault.)

Burglary: the unlawful entry or attempted entry of a structure to commit a felony or a theft (UCR counts 1 burglary per premise/"distinct operation." Note: Each office in a building, each rental storage unit, and similar premise is considered a "distinct operation".)

Larceny-Theft: the unlawful taking (or attempt), carrying, leading, or riding away of property from the possession or constructive possession of another (UCR counts 1 per incident. Note: Larceny/theft of a motor vehicle is classed separately.)

Vehicle Theft: the theft or attempted theft of a motor vehicle (UCR counts each vehicle that is a self-propelled vehicle that runs on land and not on rails, excluding farm and construction equipment)

Arson: the willful or malicious burning or attempt to burn, with or without intent to defraud, a structure, motor vehicle, personal property of another, etc. (UCR counts 1 per incident.)

Hierarchy rule: For cases involving multiple-offenses, the incident is classified and counted based on the highest offense on a hierarchy of crimes established by UCR. For example, for an incident involving a rape and a burglary, the incident would be counted in the rape category because rape is higher than burglary on the hierarchy.

Clearance: A case is considered cleared when either 1) at least one arrest is made for the offense or 2) when the offender's identity is established by investigation but the offender will not be arrested for reasons outside law enforcement control (offender dies, victim refuses to prosecute, district attorney declines prosecution, extradition is refused, etc.).

Unfounding: A case is "unfounded" and subtracted from the crime counts when investigation establishes that the incident did not actually occur or that the actions within the incident are not criminal based on current law.

For additional information, please consult the *UCR Handbook* on the FBI website at <http://www.fbi.gov/ucr/ucr.htm>.

This report was compiled by the Research, Planning, and Analysis Division.

We make an effort to present the most accurate information available at the time this report is published. Please notify the Research, Planning, and Analysis office if you have any questions about the data in this report or about an error that was missed in proofing the report.

Veronica Sorban
Ed Williams